



DE VALK
YACHT BROKERS



HALLBERG RASSY 29



DE VALK
YACHT BROKERS

HALLBERG RASSY 29

BROKER'S COMMENTS

This well maintained Hallberg-Rassy 29 is the perfect yacht for a couple with a limited budget, wanting to cruise reasonable distances in comfort and safety. No matter if you like to cruise blue waters or just a day trip on inland waters. This beautiful compact is now ready to be admired and inspected 7 days a week in our freshwater sales harbour in Hindeloopen.

Hans Visser

SPECIFICATIONS

Dimensions	8.90 x 2.83 x 1.59 (m)	Builder	Hallberg Rassy Varv AB
Built	1983	Cabins	1
Material	GRP	Berths	5
Engine(s)	1 x Volvo Penta MD 7 diesel	Hp/Kw	17.00 (hp), 12.49 (kw)
Asking price	sold (VAT)	Lying	elsewhere / Not at sales office

CONTACT

Sales office	De Valk Hindeloopen B.V.	Telephone	+31 514 52 40 00
Address	Oosterstrand 1 8713 JS Hindeloopen NL	E-mail	hindeloopen@devalk.nl

DISCLAIMER

These particulars are given in good faith as supplied but cannot be guaranteed.



GENERAL

Model	HALLBERG RASSY 29
Type	sailing yacht
LOA (m)	8,90
LWL (m)	7,25
Beam (m)	2,83
Draft (m)	1,59
Headroom (m)	1,80
Year built	1983
Builder	Hallberg Rassy Varv AB
Country	Sweden
Designer	Christoph Rassy & Olle Enderlein
Displacement (t)	3,8
Hull material	GRP
Hull colour	white
Hull shape	round-bilged
Keel type	fin keel
Superstructure material	GRP
Rubbing strake	stainless steel
Deck material	GRP
Deck finish	teak
Superstructure deck finish	non-skid moulded in
Cockpit deck finish	teak
Window frame	aluminium
Window material	tempered glass
Deckhatch	1x
Fuel tank (litre)	stainless steel 60 ltr.
Level indicator (fuel tank)	yes
Freshwater tank (litre)	stainless steel 120 ltr.
Tiller	yes



ACCOMMODATION

Cabins	1
Berths	5
Interior	mahogany
Floor	teak and holly
Open cockpit	yes
Saloon	yes
Headroom saloon (m)	1,85
Heating	diesel ducted hot air Eberspächer
Chart table	yes
Aft Cabin	For one person
Convertible berth	on both sides from the salon
Galley	yes
Countertop	plastic teak look
Sink	stainless steel
Cooker	calor gas Optimus 2 burner
Oven	In cooker
Water pressure system	electrical
Manual and/or foot pump	yes
Owners cabin	v-bed
Bed length (m)	2 mtr.
Wardrobe	hanging and shelves
Bathroom	shared
Toilet	Jabsco
Toilet system	yes
Wash basin	yes
Guest cabin 1	single bed
Bed length (m)	2 mtr.

MACHINERY

No of engines	1
---------------	---



Make	Volvo Penta
Type	MD 7
HP	17
kW	12.49
Fuel	diesel
Year installed	1985
Maximum speed (kn)	6
Cruising speed (kn)	5
Consumption (l/hr)	3
Engine cooling system	freshwater heat exchanger
Drive	sail-drive
Engine controls	yes
Exhaust	watercooled
Propeller type	fixed
Propeller blades	2
Manual bilge pump	yes
Electrical installation	12 volt
Start battery	Yes
Service battery	Yes
Battery charger	yes
Shorepower	with cable

NAVIGATION

Compass	Silva
Depth sounder	Clipper
Log	Clipper
Windset	Clipper
VHF	Lowrance LVR-250
Plotter/GPS	Raymarine a65 5,7 inch MFD met WiFi
Navigation lights	yes



EQUIPMENT

Sprayhood	yes
Boarding ladder	stainless steel
Anchor	Bruce
Anchor chain	yes
Outboard support	yes
Sea railing	wire
Grab rail (superstructure)	teak
Pushpit	yes
Pulpit	yes
Fenders	yes
Mooring lines	yes

RIGGING

Rigging	fractional
Standing rigging	wire
Brand mast	Seldén
Material mast	aluminium
Spreaders	One pair
Mainsail	yes
Mainsail cover	yes
Genoa	Molenaar
Genoa furler	Reckmann
Reefing System	slabreefing
Backstay adjuster	tackle
Boomvang	yes
Genoa sheetwinches	2x Lewmar two speed 40
Halyard winches	2x Lewmar sigle speed 8
Spinnaker winch	1 x Lewmar 7 single speed on mast
Reefing winch	yes
Spi-pole	aluminium





HALLBERG RASSY 29



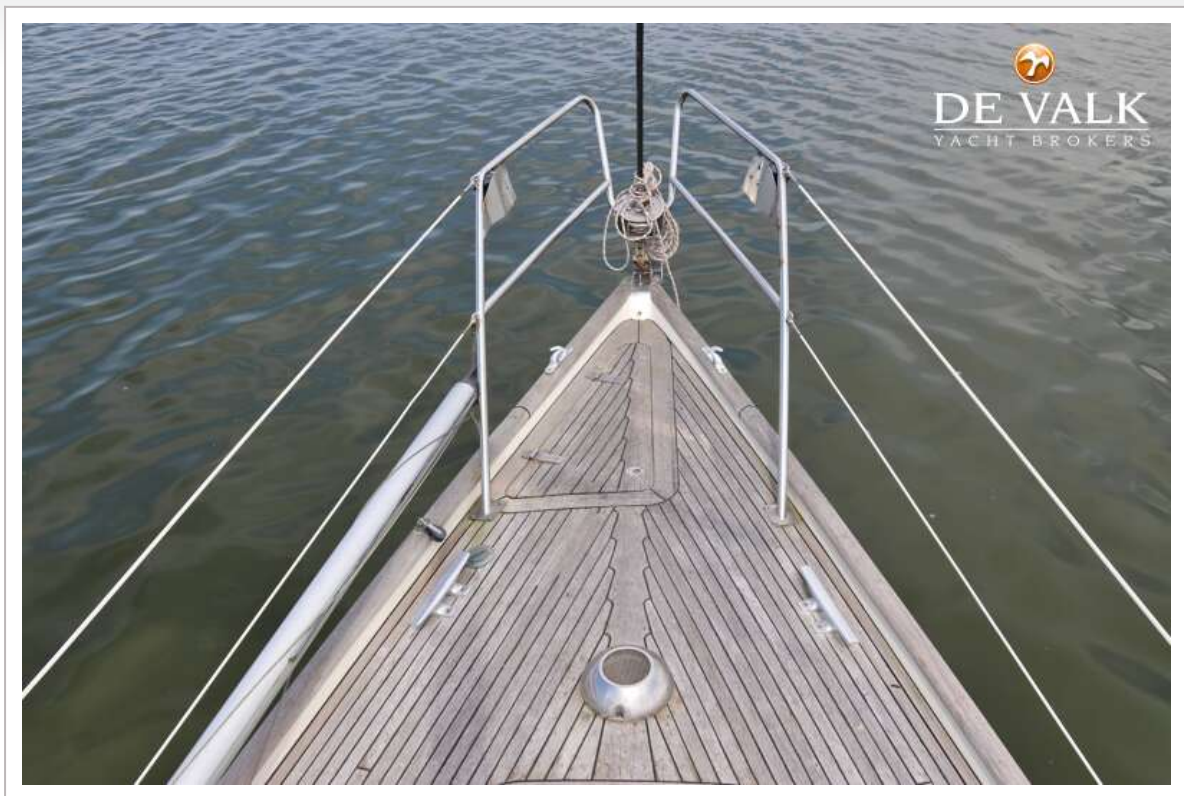
HALLBERG RASSY 29



HALLBERG RASSY 29



HALLBERG RASSY 29



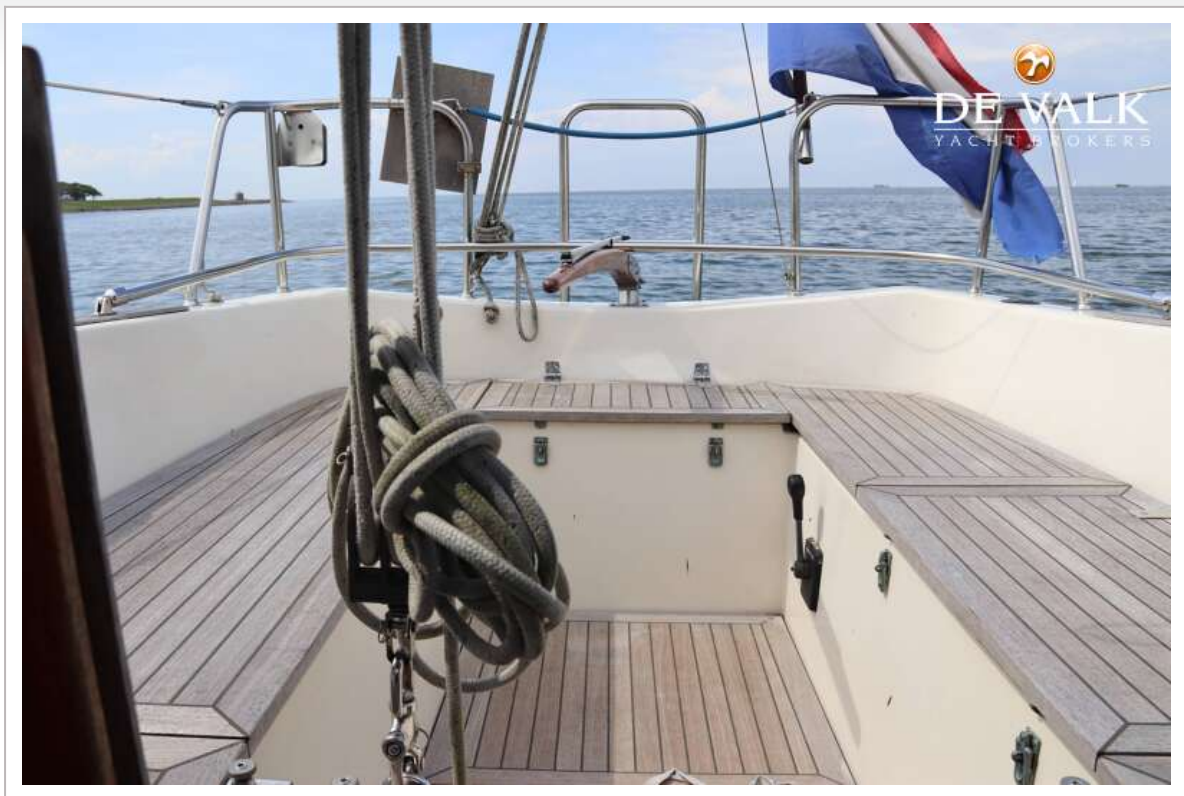
HALLBERG RASSY 29



HALLBERG RASSY 29



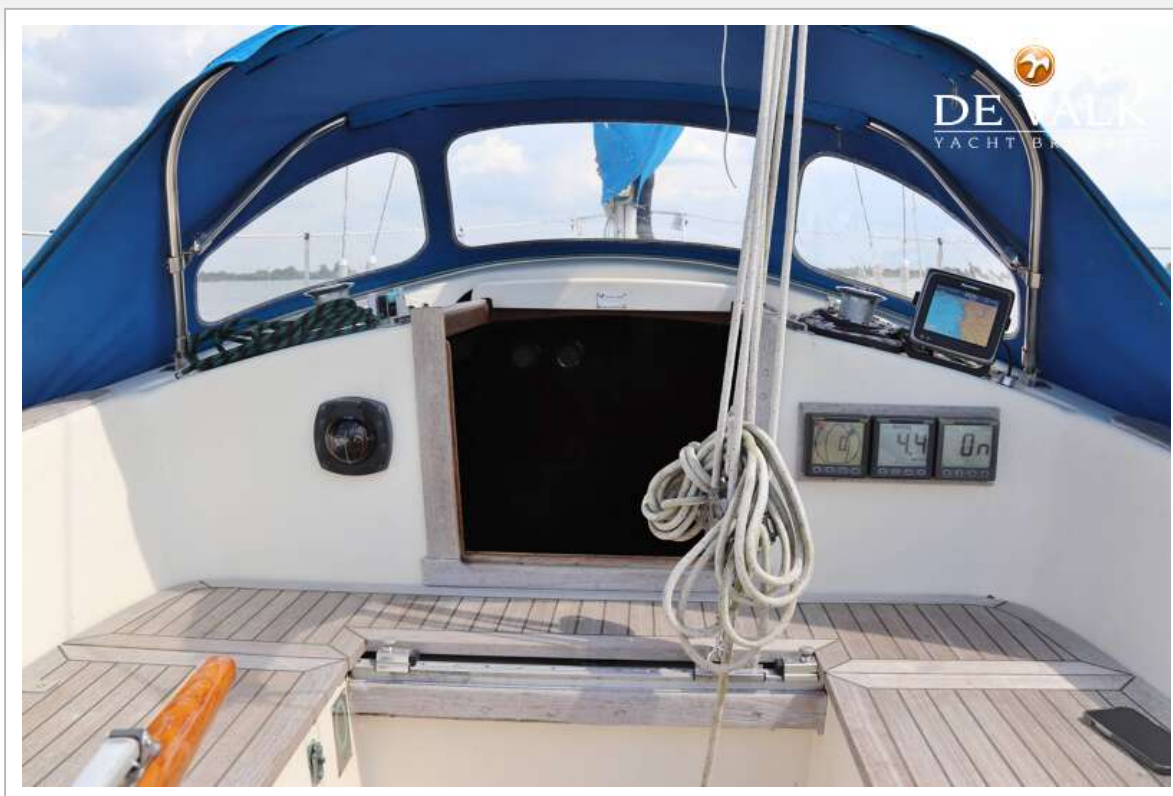
HALLBERG RASSY 29



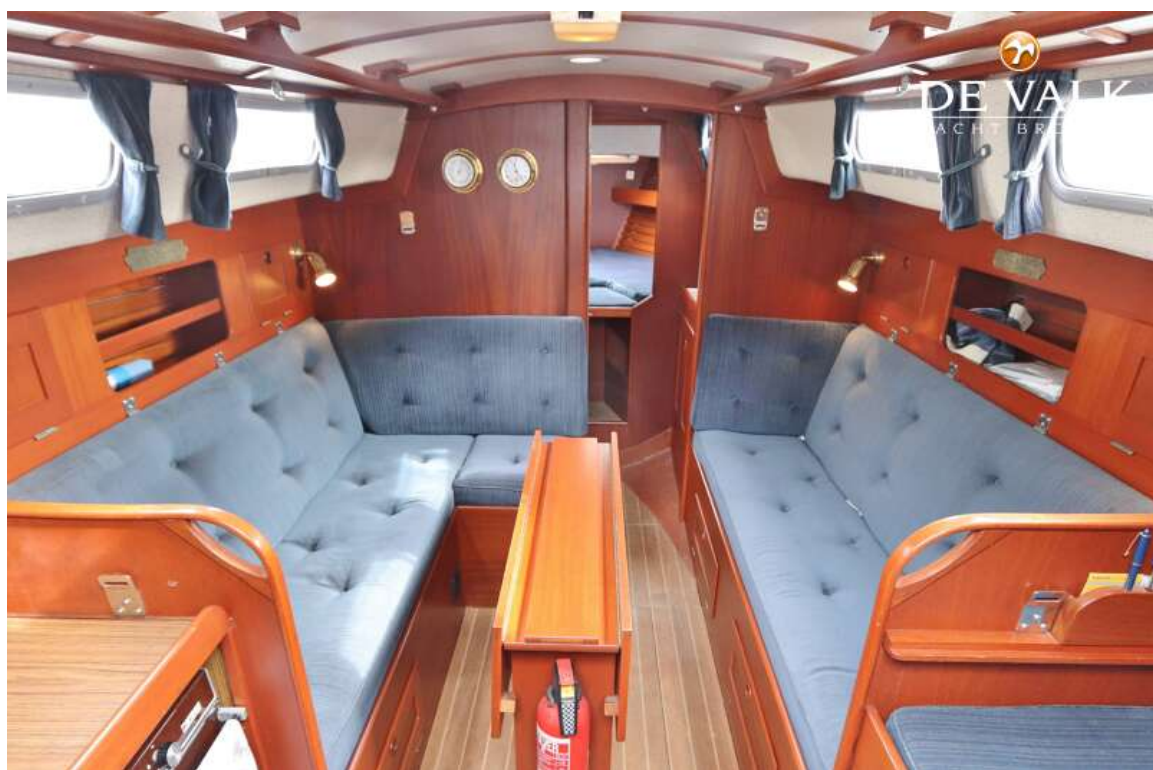
HALLBERG RASSY 29



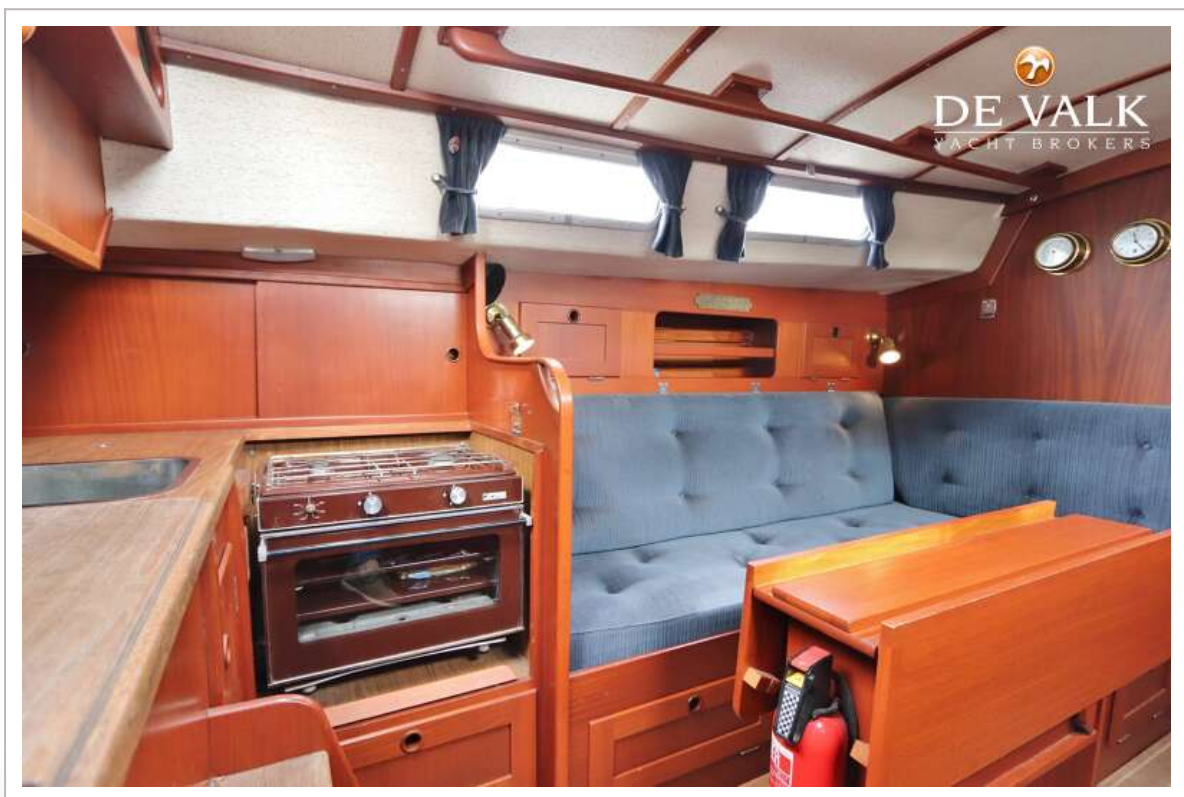
HALLBERG RASSY 29



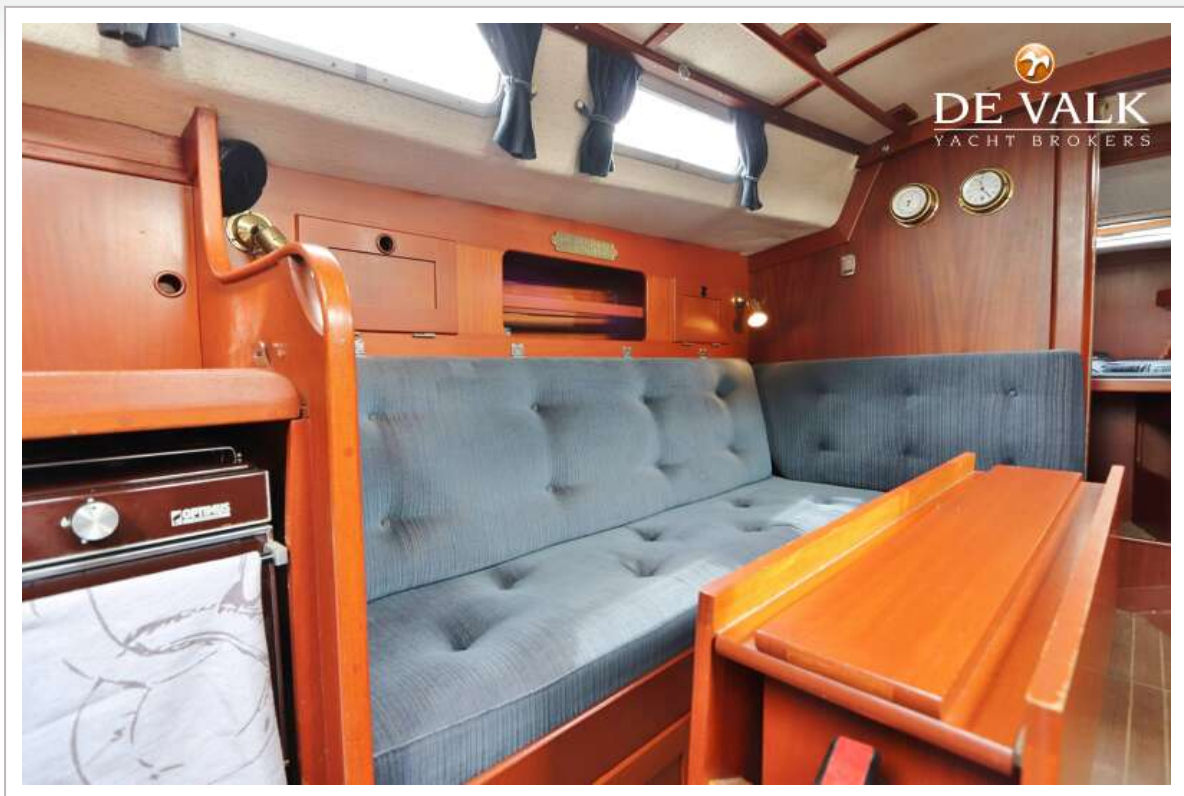
HALLBERG RASSY 29



HALLBERG RASSY 29



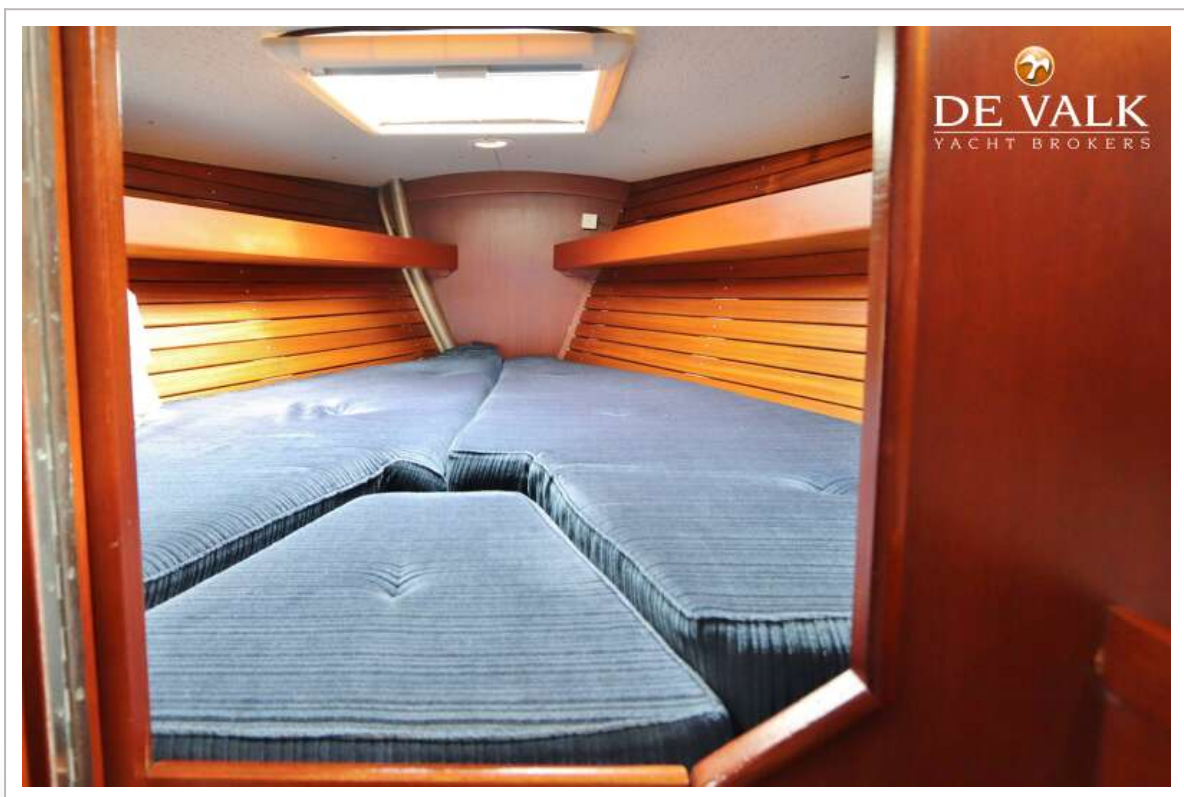
HALLBERG RASSY 29



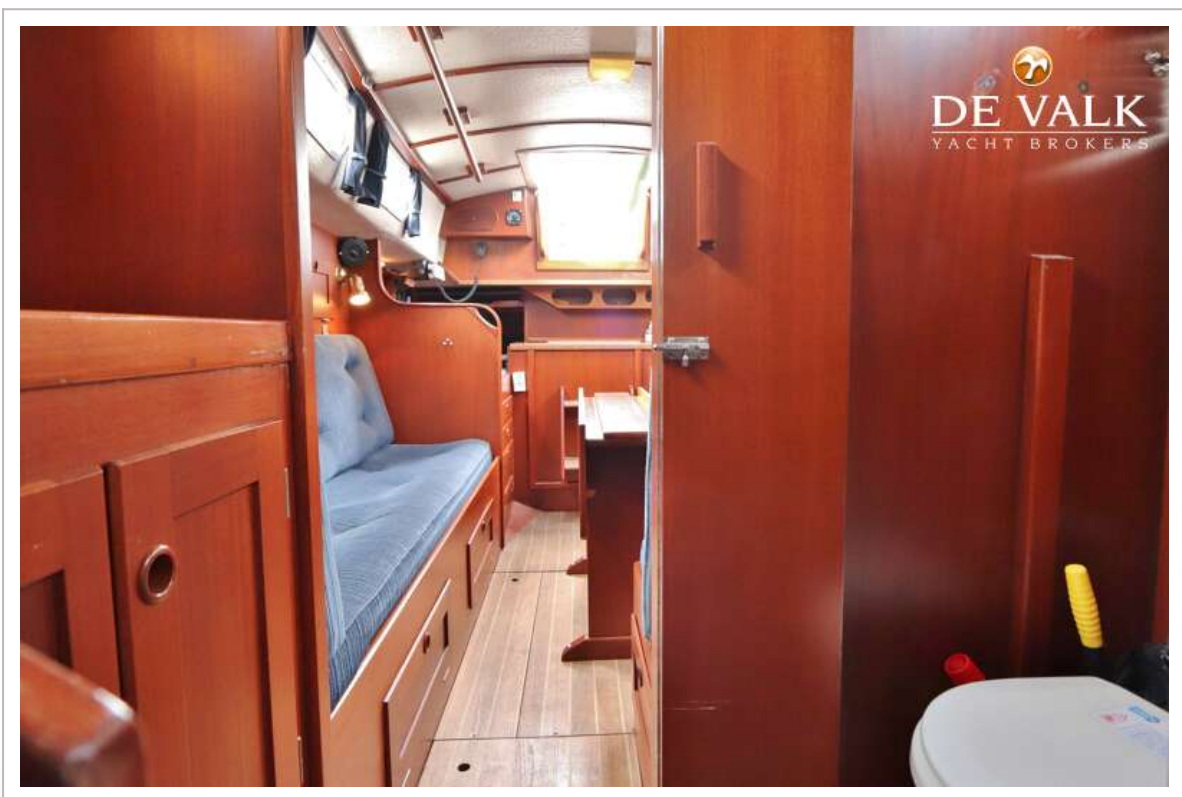
HALLBERG RASSY 29



HALLBERG RASSY 29



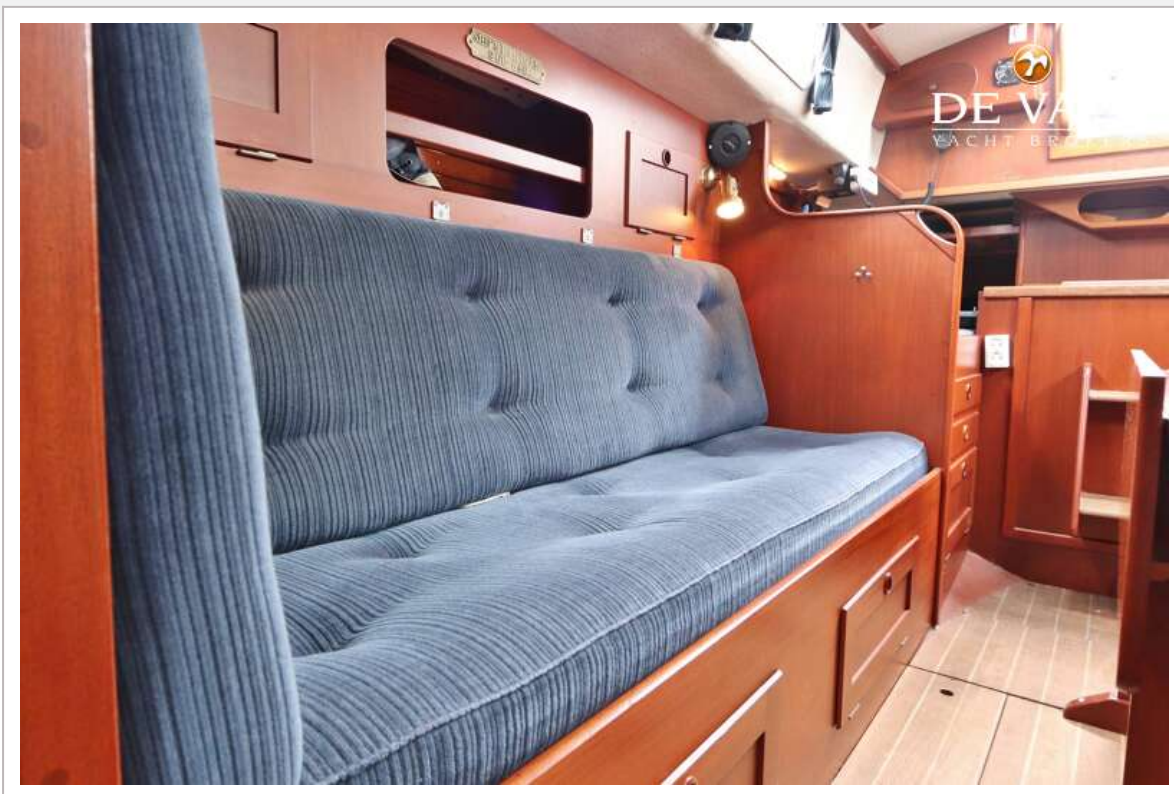
HALLBERG RASSY 29



HALLBERG RASSY 29



HALLBERG RASSY 29



HALLBERG RASSY 29



