



DE VALK
YACHT BROKERS



CARENA 47 PILOTHOUSE



DE VALK
YACHT BROKERS

CARENA 47 PILOTHOUSE

BROKER'S COMMENTS

Beautiful Custom Built Yacht for a Lifetime ! The current (first) owner has recently carried out a complete professional refit on the Carena 47 and no expense has been spared. The boat is very suitable for long sea voyages and also for permanent residence. The boat is easily operated by a small crew. The hull is Corten steel, the deck is steel and the superstructure is aluminum.

Jan-Ward van Dantzig

SPECIFICATIONS

Dimensions	14.04 x 4.00 x 1.90 (m)	Builder	G.M. Yachting - Stellendam
Built	1996	Cabins	2
Material	Steel	Berths	5
Engine(s)	1 x Yanmar 4JH4-TE diesel	Hp/Kw	75.00 (hp), 55.20 (kw)
Asking price	sold (VAT)	Lying	elsewhere / Not at sales office

CONTACT

Sales office	De Valk Sint Annaland B.V.	Telephone	+31 (0)166 601 000
Address	Koelhuisweg 4 4697 RM Sint Annaland NL	E-mail	sintannaland@devalk.nl

DISCLAIMER

These particulars are given in good faith as supplied but cannot be guaranteed.



CARENA 47 PILOTHOUSE

GENERAL

Model	CARENA 47 PILOTHOUSE
Type	sailing yacht
LOA (m)	14,04
LWL (m)	12,45
Beam (m)	4,00
Draft (m)	1,90
Air draft (m)	20,30
Headroom (m)	2,00
Year built	1996
Launched	1998, 2000 and 2022
Builder	G.M. Yachting - Stellendam
Country	The Netherlands
Designer	Hull design based on Carena 36 (Lemstra)
Displacement (t)	14,5
Ballast (tonnes)	lead in steel 4
CE norm	NA
Hull material	steel
Hull colour	beige Re-painted in 2022
Hull thickness (mm)	5 mm corten steel (1996)
Hull shape	S-bilged Corten steel hull sandblasted to SA 2.5 (before first painting)
Keel type	long keel Semi - Long keel
Superstructure material	aluminium (1996)
Deck plate thickness (mm)	5 mm (1996)
Rubbing strake	stainless steel
Deck material	steel
Deck finish	TBS non-skid profile mats (New in 2021/2022). White painted deck (2021/2022)
Superstructure deck finish	teak (New 2012+refit 2021). White painted superstructure (2021/2022)



CARENA 47 PILOTHOUSE

Cockpit deck finish	teak (New in 2012 + refit in 2021). White painted cockpit (2021/2022)
Antifouling (year)	2022
Dorades	Aluminium with plastic air-vents (4 x air-vent : New in 2022)
Window frame	aluminium
Window material	double glazing Hora tempered and hardened glass (10 mm and 6 mm - 1998)
Deckhatch	Lewmar (1998) with beige covers (2020)
Portholes	stainless steel
Insulation	foam (40 - 50 mm) (2000)
Fuel tank (litre)	steel 450 L (in the keel - 1996)
Fuel daytank (litre)	aluminium 90 L (2000)
Level indicator (daytank)	yes
Freshwater tank (litre)	steel 1000 L (cemented steel - 2000)
Blackwater tank (litre)	steel 350 L (not connected at this moment - 1996)
Wheel steering	Stainless steel covered with leather (1996)
Inside helm position	Via the autopilot (2000)
Outside helm position	cable steering Connected on to the quadrant (1996)
More info on hull	Epoxy on underwater hull before first layer antifouling applied
Extra info	Stainless steel hawse-holes, gunwales, stanchion bases, bowsprit

ACCOMMODATION

Cabins	2
Berths	5
Interior	mahogany (2000)
Floor	wood Mahogany
Aft deck	yes
Pilot house/deck saloon	yes
Saloon	yes
Headroom saloon (m)	1,90 - 2,10 - 2,60
Heating	central heating Webasto 90 Pro (New in 2020)



CARENA 47 PILOTHOUSE

Chart table	On port side
Aft Cabin	With two persons bed (across)
Galley	On port side
Countertop	Duropol
Sink	stainless steel
Cooker	calor gas Stainless steel Force 10 with 3 burners (2000)
Oven	Stainless steel Force 10 (2000)
Gas alarm	New (not mounted yet)
Fridge	Top-loader with a cold battery (Isotherm watercooled compressor)
Hot water system	220V + engine Isotherm boiler (2014)
Water pressure system	electrical (2000)
Crockery	yes
Owners cabin	double bed
Bed length (m)	2,00 - 2,30 x 1,70
Wardrobe	hanging/drawers/shelves
Bathroom	en suite
Toilet	en suite
Toilet system	electric Jabsco (New in 2020)
Wash basin	in the bathroom
Shower	en suite
Guest cabin 1	v-bed
Bed length (m)	2,00 x 1,70
Wardrobe	hanging/drawers/shelves
Bathroom	en suite
Toilet	en suite
Toilet system	manual Jabsco
Wash basin	in the bathroom
Shower	en suite

MACHINERY



CARENA 47 PILOTHOUSE

No of engines	1
Make	Yanmar
Type	4JH4-TE
HP	75
kW	55.20
Fuel	diesel
Year installed	2007
Maximum speed (kn)	9
Cruising speed (kn)	7,5
Consumption (l/hr)	3,6
Engine hours	1810
Engine cooling system	freshwater heat exchanger (New in 2007)
Drive	shaft
Engine controls	bowden cable (New in 2007)
Gearbox	mechanical (New in 2007)
Bowthruster	electric Cram - twinprop (installed in 2000)
Exhaust	watercooled
Thrust bearing	Aqua Drive and CV (Constant Velocity) Joint (both from 2000)
Propeller type	fixed (New in 2007)
Propeller blades	3
Propeller shaft material	stainless steel (New in 2007)
Shaft lubrication	water Volvo Seal (New in 2017)
Manual bilge pump	(1997)
Electric bilge pump	(2000)
Bilge alarm	(2000)
Electrical installation	12 and 220 Volt
Batteries	4 x
Start battery	1 x Varta 95 Ah (New in 2022)
Service battery	2 x Varta 190 Ah (New in 2022)
Bowthruster battery	1 x Varta (New in 2019)
Battery monitor	Mastervolt Battery Monitor BTM-1 (2000)
Battery charger	Victron Pallas-TG 12V-50A (2000)



Inverter	Victron Phoenix Inverter Compact 12V / 230V - 2000W (2012)
Solar panel	2x 140W with ProStar-30 SolarChargeController (All new in 2021)
Diode battery combiners	yes
Shorepower	with cable
Insulation transformer	Victron Isolation Transformer 3600 Watt (2007)
Extra info	80 A Alternator on the engine (2007)
Extra info	Original engines replaced in 2000 and replaced again in 2007

NAVIGATION

Compass	Plath (2000)
Electric compass	For the autopilot (2000)
Depth sounder	Simrad IS50 (New in 2014)
Log	Simrad IS50 (New in 2014)
Windset	Simrad IS50 (New in 2014)
Repeater	1x Simrad IS12 Mega (New in 2014) at the chart table
VHF	1x Simrad RD68 (New in 2014) and 1x Furuno FM-2510 (2000)
VHF handheld	Icom IC-M21 Water Resist (2000)
Autopilot	Simrad (hydraulic drive) with remote inside and outside (2000)
Rudder angle indicator	In the autopilot (2000)
Radar	Raymarine (2000) in Pilothouse (New dome in 2010)
GPS	1x Furuno GP-32 (2000) and 1x Simrad
Plotter/GPS	B&G Z12 in Pilothouse (New in 2017)
Navtex	Furuno NX-300 (2000)
Electronic chart(s)	Navionics Platina (updated in 2020)
AIS transceiver	Simrad AI50 Class B (New in 2017)
Transmitter	Icom 706MKIIG - Spit with Icom PactorModem III Transmitter(2000)
EPIRB	Satellite 2 - 406 (2000)
Navigation lights	LED (New from 2022)
Extra info	Stainless steel antenna pole on stern (2000)



EQUIPMENT

Sprayhood	Beige (New in 2020)
Sun awning	1 x smal (with side flaps) and 1 x large (2003)
Winter cover	Cover over the teak in the cockpit (2001)
Cockpit table	Teak (2000)
Boarding ladder	stainless steel , can be mounted at the opening gates on both sides (2000)
Deck shower	Via window
Anchor	Spade Anchor (New in 2022)
Anchor chain	10 mm 60 meter galvanised (2012)
Anchor 2	Fortress With 10 meter lead weighted anchor line and 60 meter anchor line
Windlass	electrical MUIR VFF 1650 (mounted below deck in 2000)
Outboard support	Teak (2007)
Davits	stainless steel (2007)
Davits controls	manual
Deck crane	manual Simpson in stainless steel (2007)
Sea railing	Stainless steel - double wired (New from 2022)
Railing side opening gates	Stainless steel - on port and starboard side (2000)
Pushpit	Stainless steel (2000)
Pulpit	Stainless steel (2000)
Life raft (pers)	container 4 persons Plastimo Transocean Type 1 Groupe A (New from 2022)
Lifejackets	3 x
Safety harness	3 x
Lifebuoy	yes
Danbuoy	yes
Safety lines on deck	Belt on deck
Horn	Manual
Radar reflector	Tri-Lens (2000)
Fenders	yes
Mooring lines	yes



Radio-cd player	Pioneer MixTrax
iPod connection	yes
Speakers in salon	2 x
Fire extinguisher	2 x
Latest extinguisher survey	Need to be surveyed / replaced
Extra info	Fire-Blanket

RIGGING

Rigging	sloop-cutter
Standing rigging	Main rigging in Dyform and the rest of the rigging in 10 mm wire
Brand mast	Holland Spar (1998)
Material mast	aluminium White painted in 2021/2022
Spreaders	2 x 2 spreaders - white painted in 2021/2022
Mainsail cover	Beige (2015)
Battcars	3 x (2000)
Fully battened mainsail	De Vries Sails Semi-Fully battened (2000)
Jib	De Vries Sails Cutter Jib (2007) with UV protection strip
Genoa	De Vries Sails (2000) with reef tape and UV protection strip
Genoa furler	Manual Furlex 300S (2000)
Cutter furler	Manual Furlex 200S (2007)
Reefing System	slabreefing 3 x reef
Boomvang	gasspring (New in 2020) - Holland Spar - white painted in 2021/2022
Secondary sheet winch	Stainless steel Andersen 2 x 46 ST (1998)
Genoa sheetwinches	Stainless steel Andersen 2 x 52 ST (1998)
Halyard winches	Stainless steel Andersen 2 x 40 ST (on the mast in 1998)
Reefing winch	1 x (1998)
Spi-pole	aluminium (2000)
Extra info	Lazy-Jacks, Backstays, Babystay. Lewmar Genoa tracks on deck
Extra info	Standing rigging checked by Holland Spar in 2022



CARENA 47 PILOTHOUSE



CARENA 47 PILOTHOUSE



CARENA 47 PILOTHOUSE



CARENA 47 PILOTHOUSE



CARENA 47 PILOTHOUSE



CARENA 47 PILOTHOUSE



CARENA 47 PILOTHOUSE



CARENA 47 PILOTHOUSE



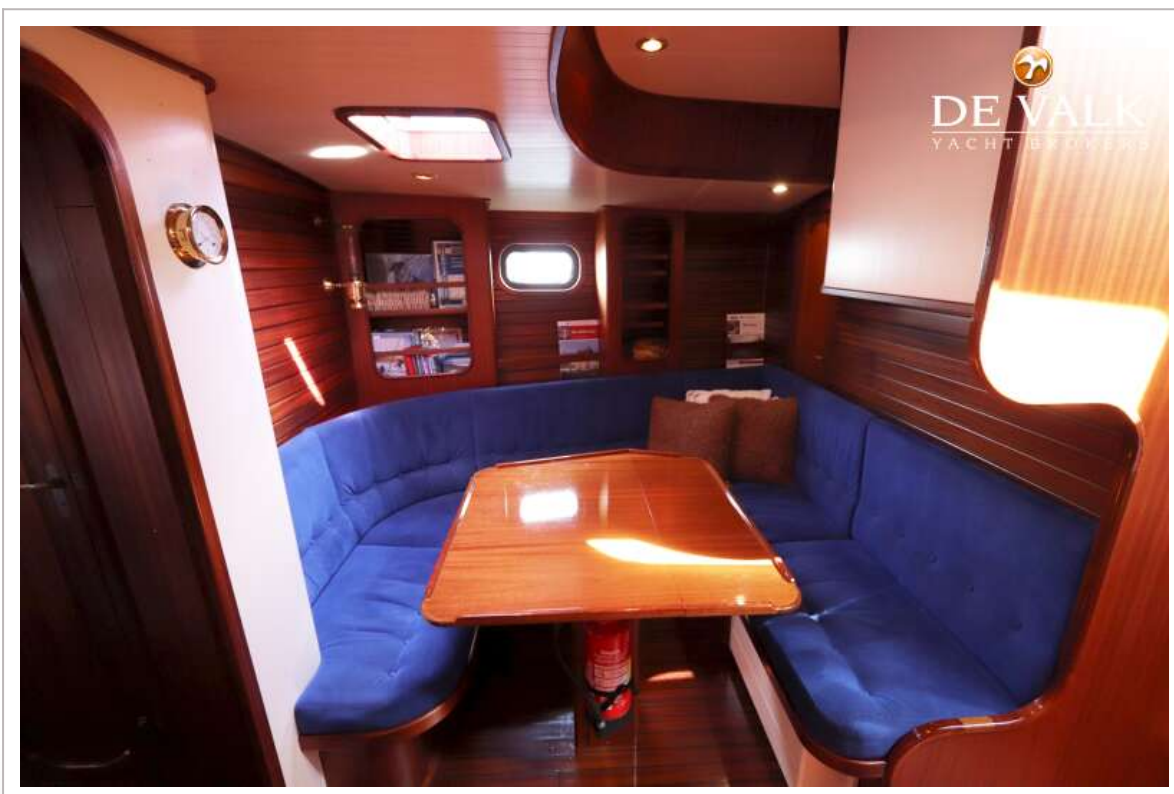
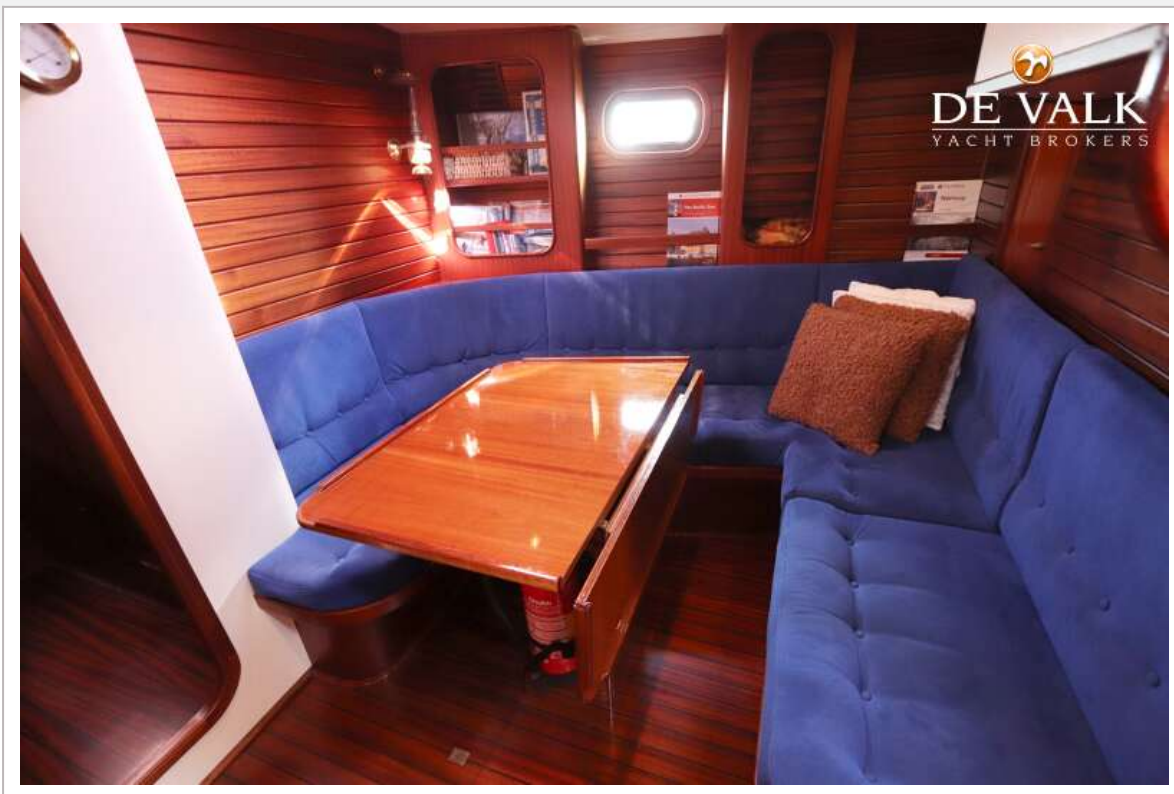
CARENA 47 PILOTHOUSE



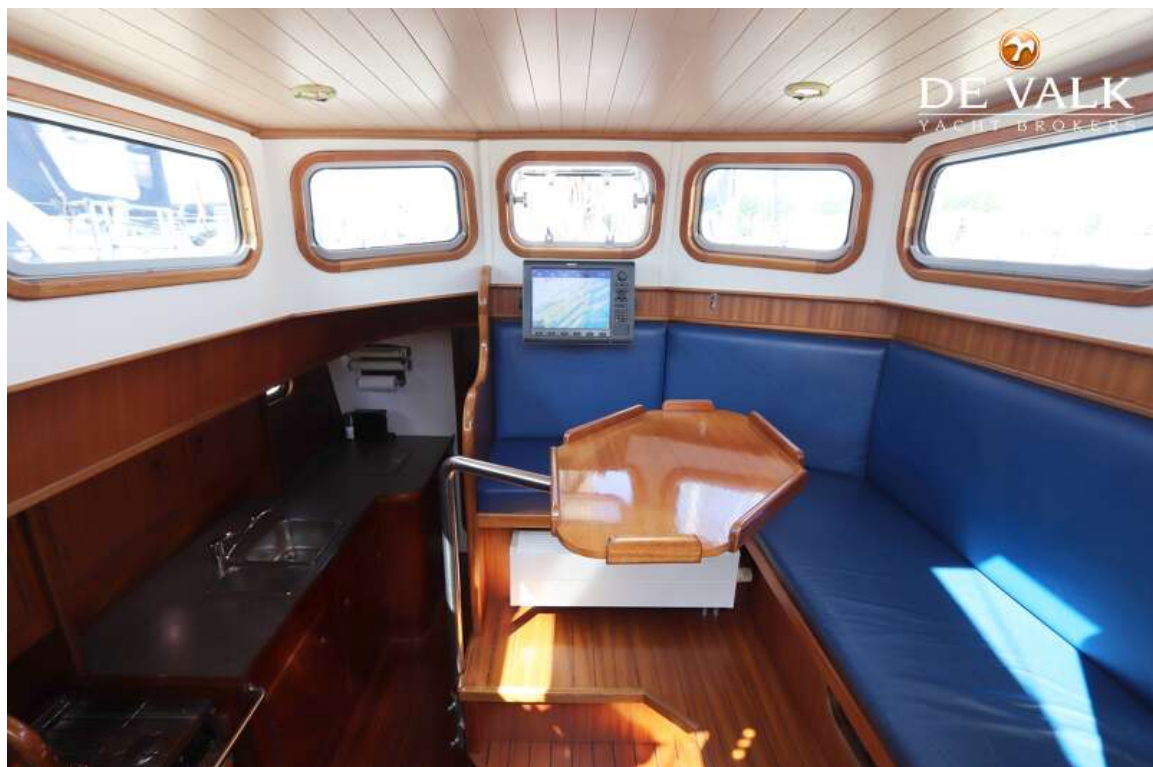
CARENA 47 PILOTHOUSE



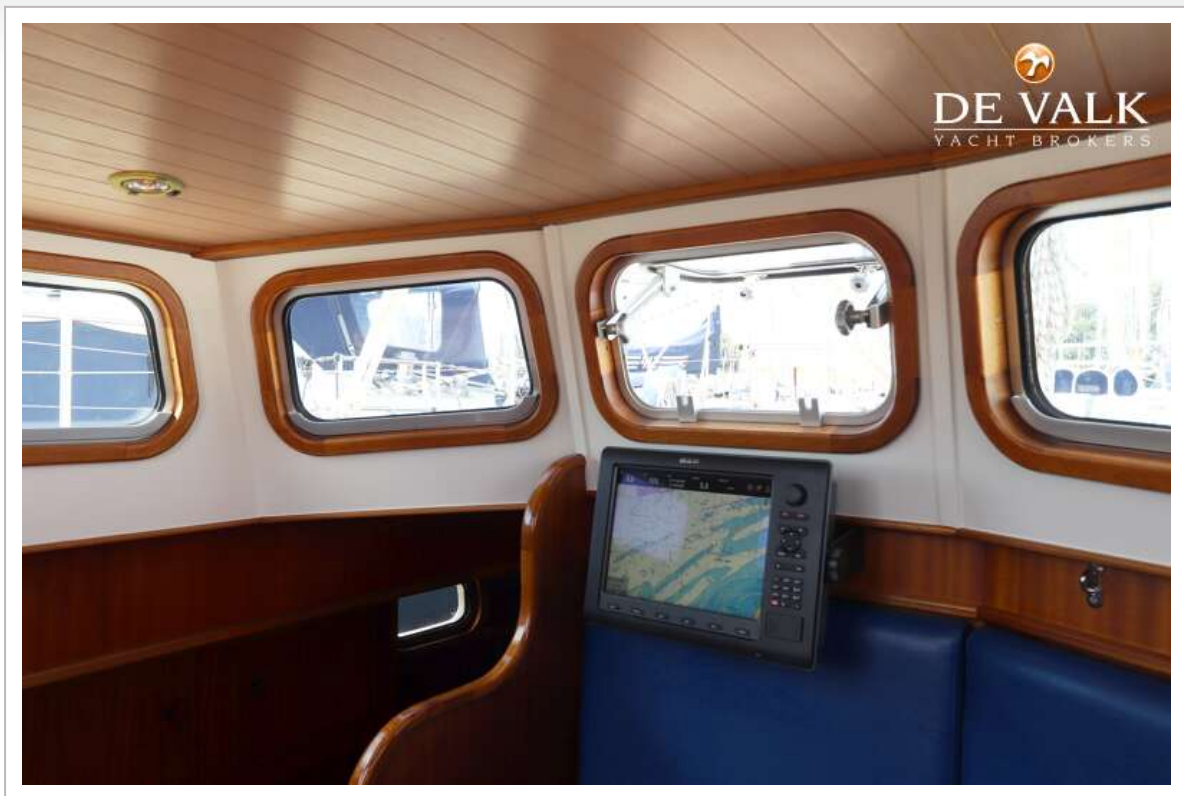
CARENA 47 PILOTHOUSE



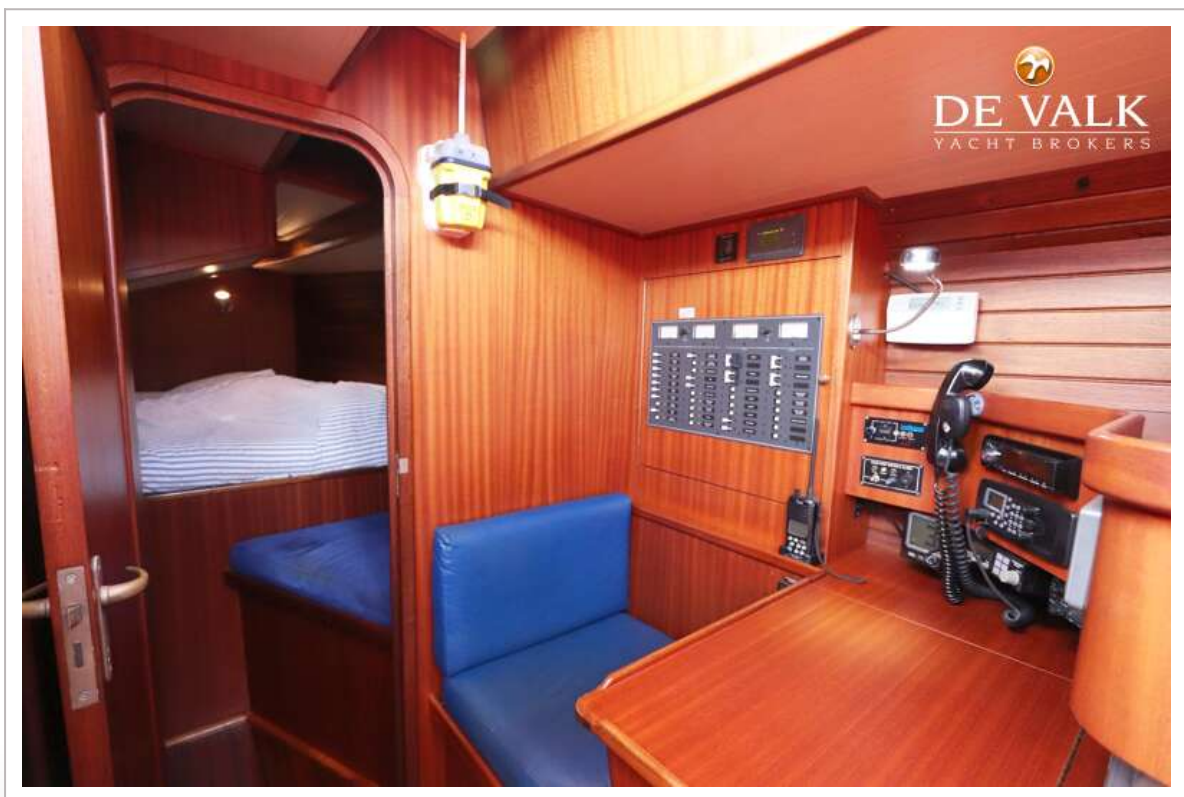
CARENA 47 PILOTHOUSE



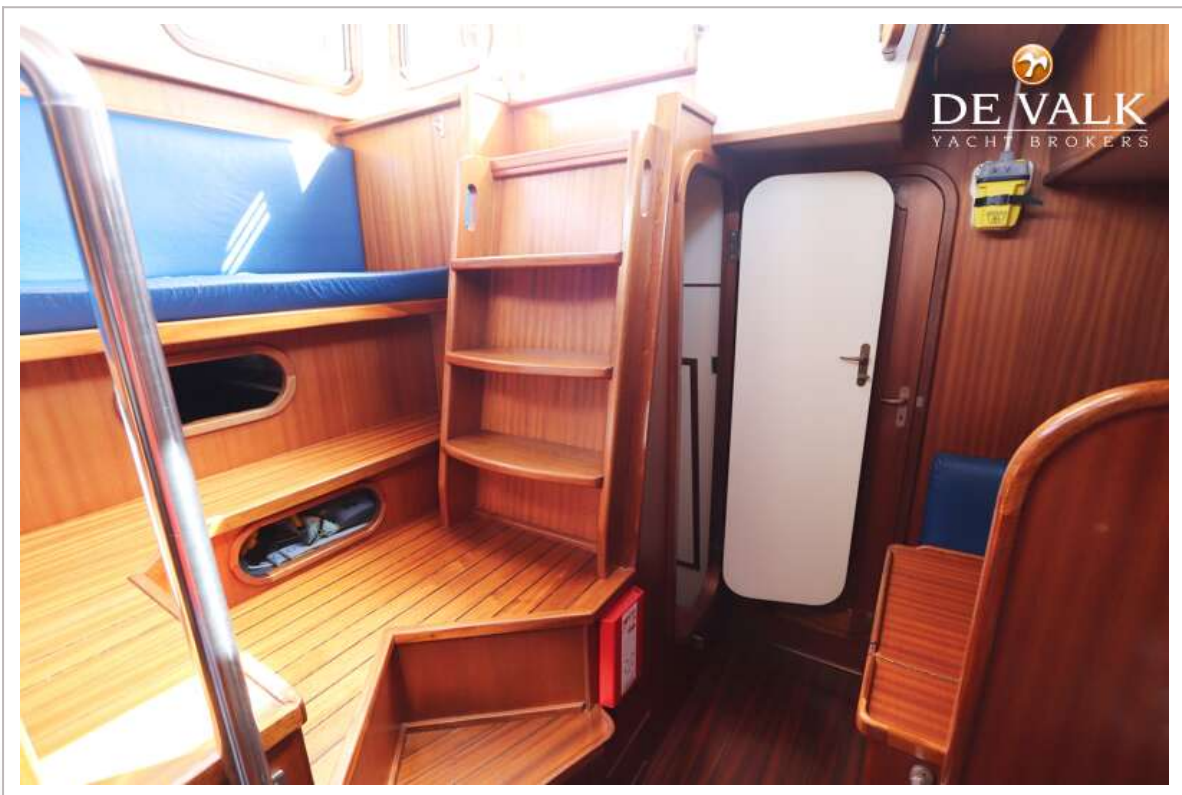
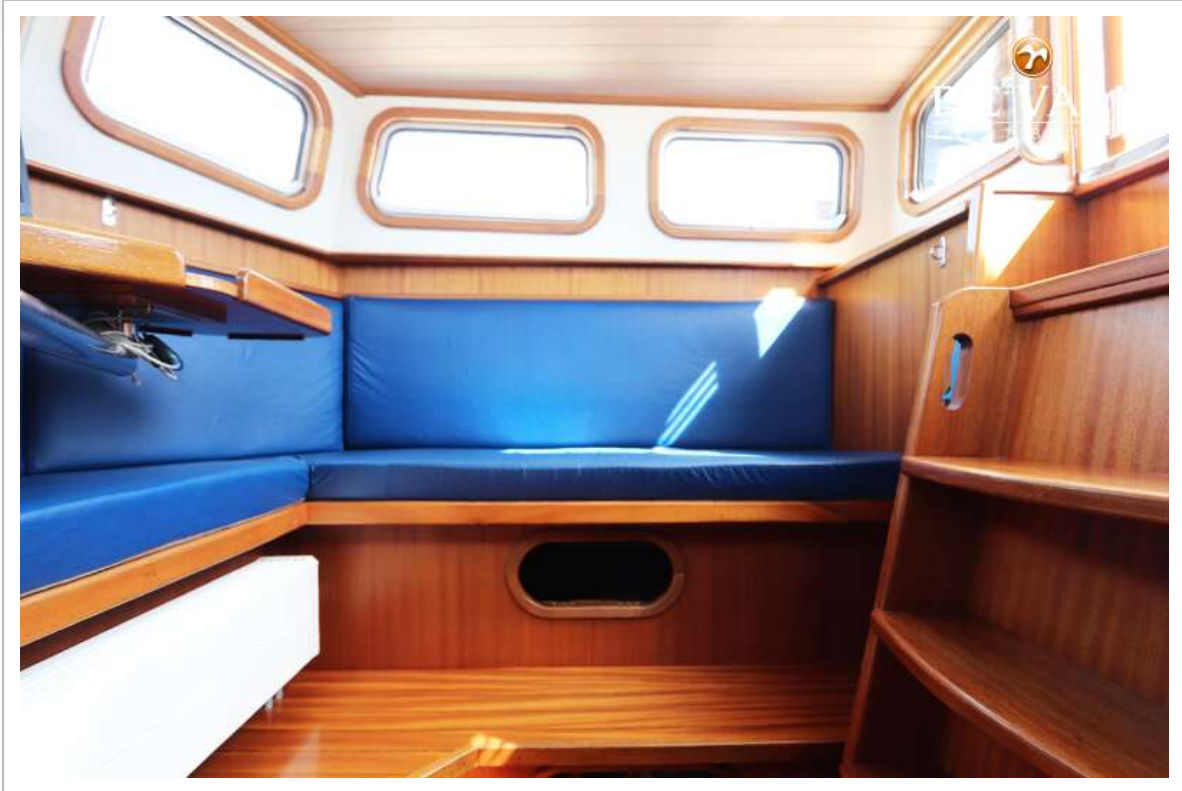
CARENA 47 PILOTHOUSE



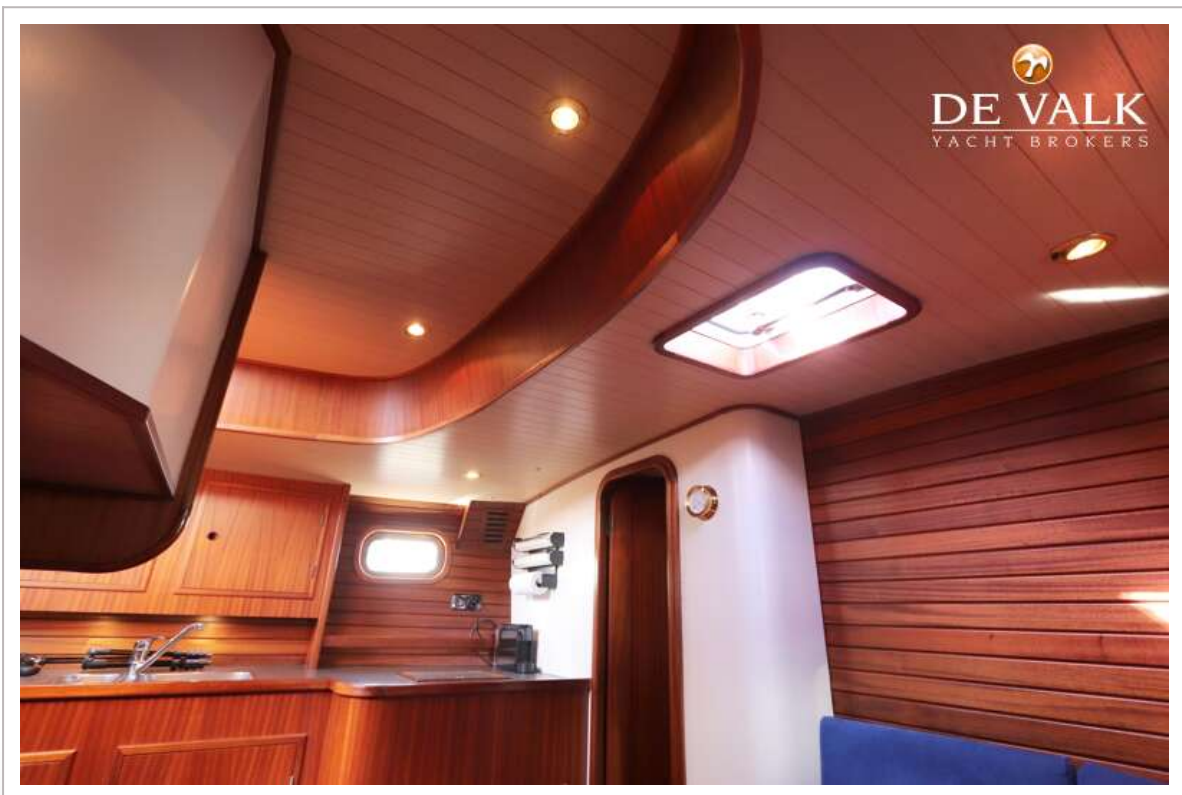
CARENA 47 PILOTHOUSE



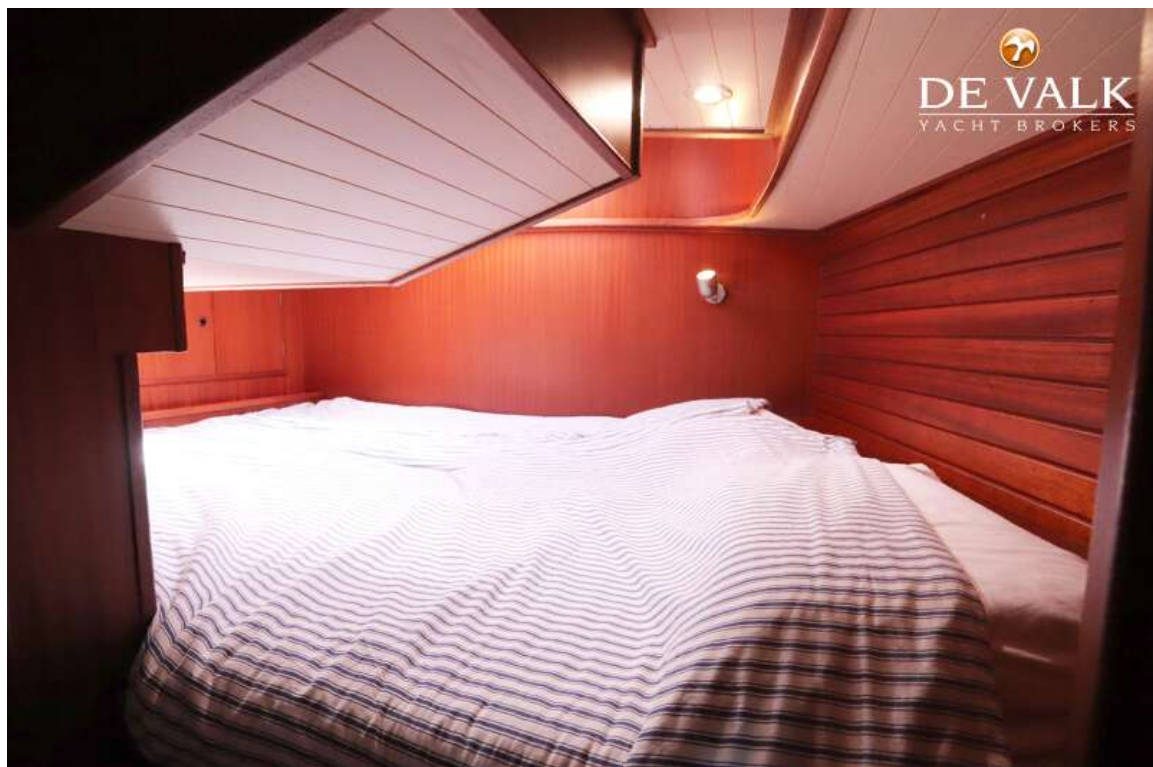
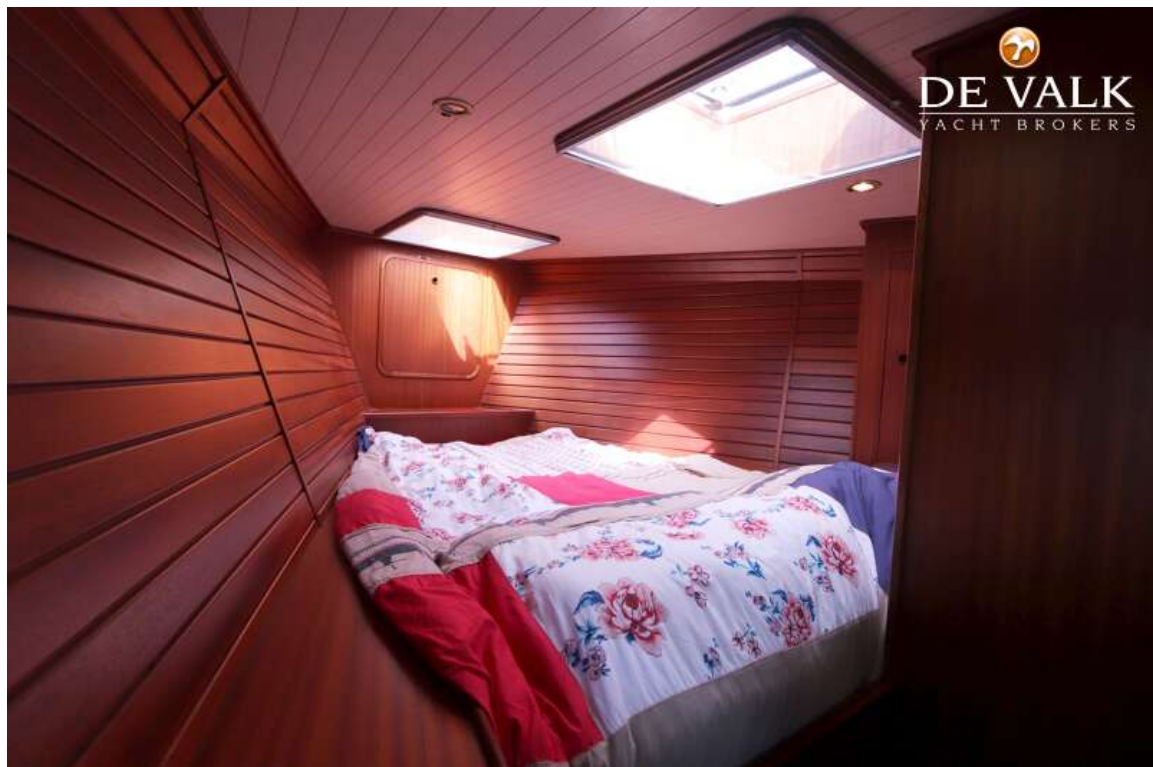
CARENA 47 PILOTHOUSE



CARENA 47 PILOTHOUSE



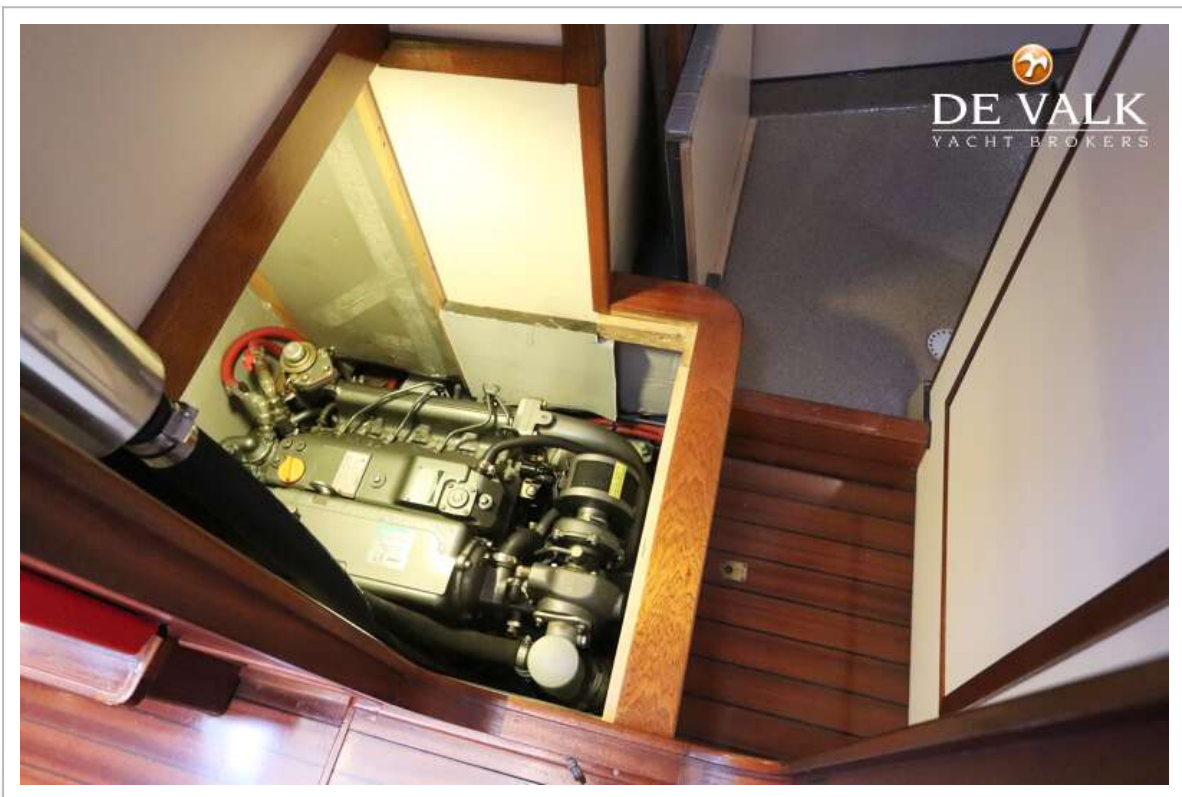
CARENA 47 PILOTHOUSE



CARENA 47 PILOTHOUSE



CARENA 47 PILOTHOUSE



CARENA 47 PILOTHOUSE



CARENA 47 PILOTHOUSE

