



## LAGOON ROYAL CLASSIC 65

# LAGOON ROYAL CLASSIC 65

## BROKER'S COMMENTS

Lagoon Royal Classic 65. First launched in 2006. Beautiful sloop built of laminated oak frames and an overlapped triple mahogany planking by Lagoon Royal Yachts. She is powered with a 140 hp Volvo engine and has an impressive inventory including generator, reverse cycle aircon, watermaker, full Raymarine navigation system etc. Elegant and comfortable accommodation for six guests in three double cabins and a separate crew quarters for two forward. Mahogany interior. In the past she has been used for light charter and is now in private hands. Curious? Come and see her in A'dam upon appointment.

*Reinier van der Wolf*

## SPECIFICATIONS

<b>Dimensions</b>	19.50 x 5.54 x 2.80 (m)	<b>Builder</b>	Lagoon Royal Yachts, Kiev
<b>Built</b>	2005	<b>Cabins</b>	4
<b>Material</b>	Wood	<b>Berths</b>	8
<b>Engine(s)</b>	1 x Volvo penta D5 - A TA diesel	<b>Hp/Kw</b>	140.00 (hp), 103.00 (kw)
<b>Asking price</b>	€ 445.000 (VAT Paid)	<b>Lying</b>	elsewhere / Not at sales office

## CONTACT

<b>Sales office</b>	De Valk Monnickendam B.V.	<b>Telephone</b>	+31 (0)299 65 63 50
<b>Address</b>	Hoogedijk 6 1145 PM Katwoude NL	<b>E-mail</b>	monnickendam@devalk.nl

## DISCLAIMER

These particulars are given in good faith as supplied but cannot be guaranteed.



## GENERAL

Model	LAGOON ROYAL CLASSIC 65
Type	sailing yacht
LOA (m)	19,50
Beam (m)	5,54
Draft (m)	2,80
Headroom (m)	2,12
Year built	2005
Launched	2006
Builder	Lagoon Royal Yachts, Kiev
Country	Ukraine
Designer	Gruppo ALA, Italie
Displacement (t)	36,5
Ballast (tonnes)	cast iron and lead
CE norm	A
Hull material	wood
Hull colour	Wood, varnished
Hull thickness (mm)	+/- 60 mm.
Hull shape	round-bilged
Keel type	fin keel
Superstructure material	mahogany
Deck plate thickness (mm)	+/- 40 mm.
Rubbing strake	wood
Deck material	mahogany
Deck finish	teak
Superstructure deck finish	teak
Cockpit deck finish	teak
Antifouling (year)	2021
Window frame	aluminium
Window material	tempered glass
Deckhatch	yes



# LAGOON ROYAL CLASSIC 65

Portholes	aluminium
Insulation	foam
Fuel tank (litre)	stainless steel 1250
Level indicator (fuel tank)	yes
Freshwater tank (litre)	polyethylene Vetus 2x (total +/- 800 l.)
Level indicator (freshwater)	yes
Blackwater tank (litre)	polyethylene Vetus +/- 300
Level indicator (blackwater)	yes
Blackwater tank extraction	deck extraction + pump Macerator pump
Wheel steering	hydraulic
Outside helm position	hydraulic
Emergency tiller	yes
More info on hull	Hull material: oak frameworks + 3 layers mahogany screwed and epoxy glued.
More info on paintwork	International

## ACCOMMODATION

Cabins	4
Berths	8
Interior	mahogany Solid and veneered
Floor	teak and holly
Open cockpit	yes
Deck saloon	yes
Saloon	yes
Headroom saloon (m)	2.12 m.
Heating	electric 220V 4 units air conditioning reversible
Air-conditioning	4 units Climma Marine
Navigation center	yes
Chart table	yes
Aft Cabin	2x
Galley	yes



# LAGOON ROYAL CLASSIC 65

Countertop	plastic
Sink	stainless steel
Cooker	ceramic Schott Ceran
Oven	yes
Extractor	yes
Microwave	yes
Fridge	Coolmatic
Freezer	Coolmatic
Hot water system	220V + engine
Water pressure system	electrical
Owners cabin	double bed
Bed length (m)	1.40 x 1.90
Wardrobe	hanging and shelves
Bathroom	en suite
Toilet	en suite
Toilet system	vacuum
Wash basin	in the bathroom
Shower	en suite
Extra info	spacious 1 + 2 seating area in owner's cabin.
Guest cabin 1	double bed
Bed length (m)	1.50 x 1.90
Wardrobe	hanging and shelves
Bathroom	en suite
Toilet	en suite
Toilet system	vacuum
Wash basin	in the bathroom
Shower	en suite
Extra info	ruim 2.00 m stahoogte in hut en badkamer
Guest cabin 2	double bed
Bed length (m)	1.50 x 1.90
Wardrobe	hanging and shelves
Bathroom	en suite



# LAGOON ROYAL CLASSIC 65

Toilet	en suite
Toilet system	vacuum
Wash basin	in the bathroom
Shower	en suite
Crew cabin(s)	1x
Bathroom (crew)	yes
Toilet (crew)	yes
Toilet system	vacuum
Wash basin	in the bathroom
Shower (crew)	yes
Extra info	foredeck with entrance from deck.
Washing machine	yes
Wet bar	in owners cabin

## MACHINERY

No of engines	1
Make	Volvo penta
Type	D5 - A TA
HP	140
kW	103
Fuel	diesel
Year installed	2005
Maximum speed (kn)	10 kn
Cruising speed (kn)	7 - 8
Engine hours	1750
Engine cooling system	freshwater heat exchanger
Drive	shaft
Engine controls	bowden cable
Gearbox	mechanical
Exhaust	watercooled
Propeller type	fixed



# LAGOON ROYAL CLASSIC 65

Propeller blades	3
Propeller shaft material	stainless steel
Shaft lubrication	water
Electric bilge pump	4x Jabsco
Bilge alarm	yes
Generator	silent separator Mastervolt Whisper 12 Ultra
Running hours generator	after installation of new Mitsubishi diesel in 2019. 100
Batteries	19x
Start battery	5 groups 12V and 24V.
Service battery	12x
Generator battery	yes
Battery monitor	Mastervolt
Battery charger	Mastervolt
Inverter	Mastervolt
Shorepower	yes
Watermaker	conserved

## NAVIGATION

Compass	Riviera binnacle
Depth sounder	Raymarine
Windset	Raymarine
VHF	yes
Autopilot	Raymarine
Rudder angle indicator	Raymarine
Radar	Raymarine
GPS	Raymarine
Plotter	Raymarine
Navigation lights	yes

## EQUIPMENT

Bimini	2022
--------	------



# LAGOON ROYAL CLASSIC 65

Winter cover	yes
Cockpit cushions	yes
Cockpit table	yes
Boarding ladder	stainless steel
Bow ladder	yes
Gangway	yes
Deck shower	yes
Anchor	yes
Anchor 2	yes
Anchor chain	yes
Other ground tackle	yes
Windlass	electrical Lewmar
Dinghy	inflatable Zodiac (4.20 m.)
Outboard	Mercury
Sea railing	stainless steel
Pushpit	yes
Pulpit	yes
Life raft	yes
Lifejackets	yes
Lifebuoy	yes
Safety lines on deck	yes
Horn	electric
Binocular	yes
Radar reflector	yes
Fenders	yes
Mooring lines	yes
Spare parts	yes
Tools	yes
Clock - barometer	yes
Fire extinguisher	yes



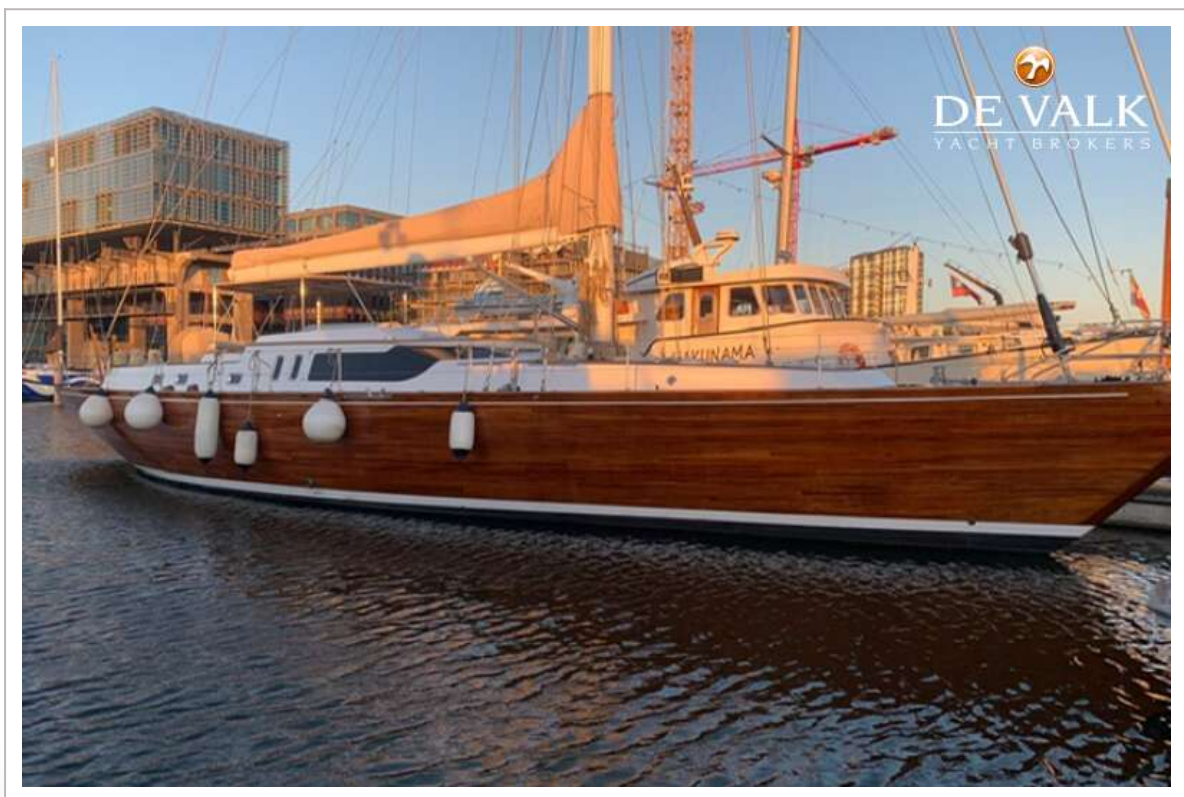


## RIGGING

Rigging	sloop
Standing rigging	wire Stainless steel
Material mast	aluminium
Spreaders	3x
Mainsail cover	Lazy bag
Fully battened mainsail	with two reefs Hydranet
Jib	Hydranet
Genoa	Hydranet
Genoa furler	Harken Mark III
Gennaker	with sock
Staysail	Hydranet
Reefing System	quick-one-line-reefing
Backstay adjuster	mechanical
Boomvang	mechanical
Primary sheet winch	Harken
Genoa sheetwinches	Harken
Halyard winches	Harken
Winchcovers	yes
Extra info	one of the 9 Harken winches is electric
Extra info	Steel Harken deck gear



# LAGOON ROYAL CLASSIC 65



# LAGOON ROYAL CLASSIC 65





# LAGOON ROYAL CLASSIC 65



# LAGOON ROYAL CLASSIC 65



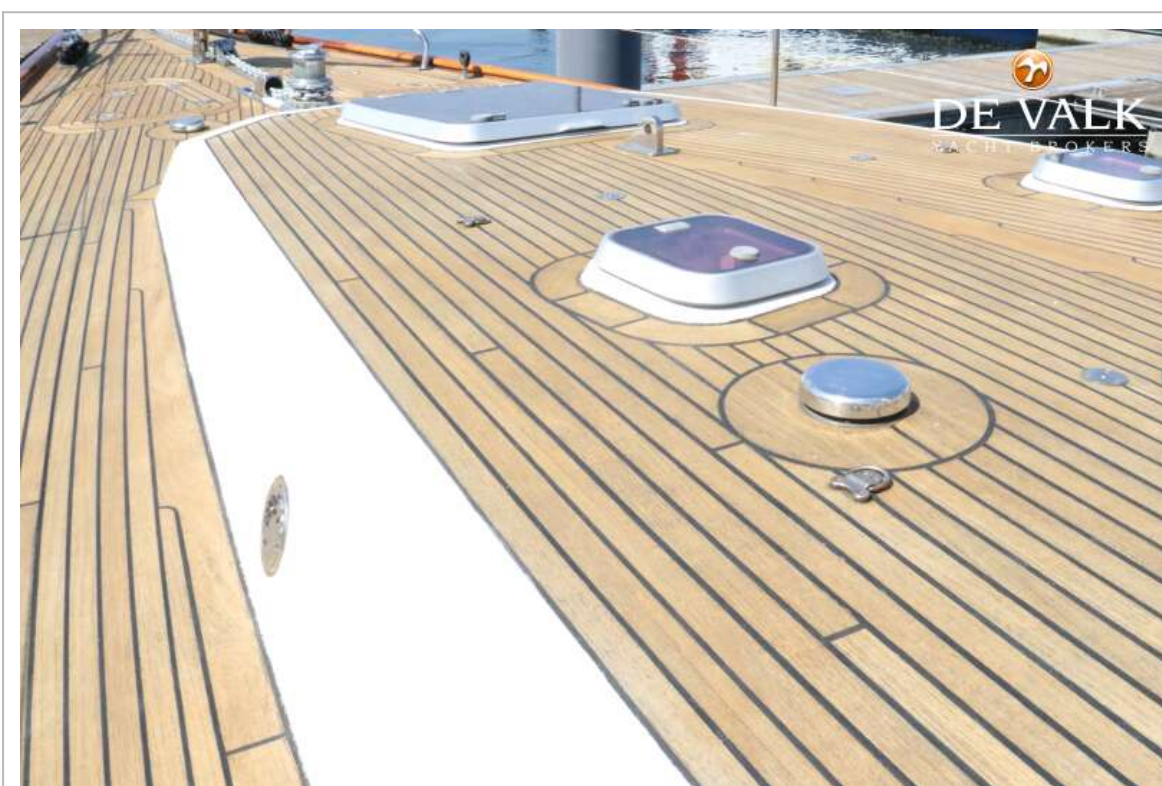
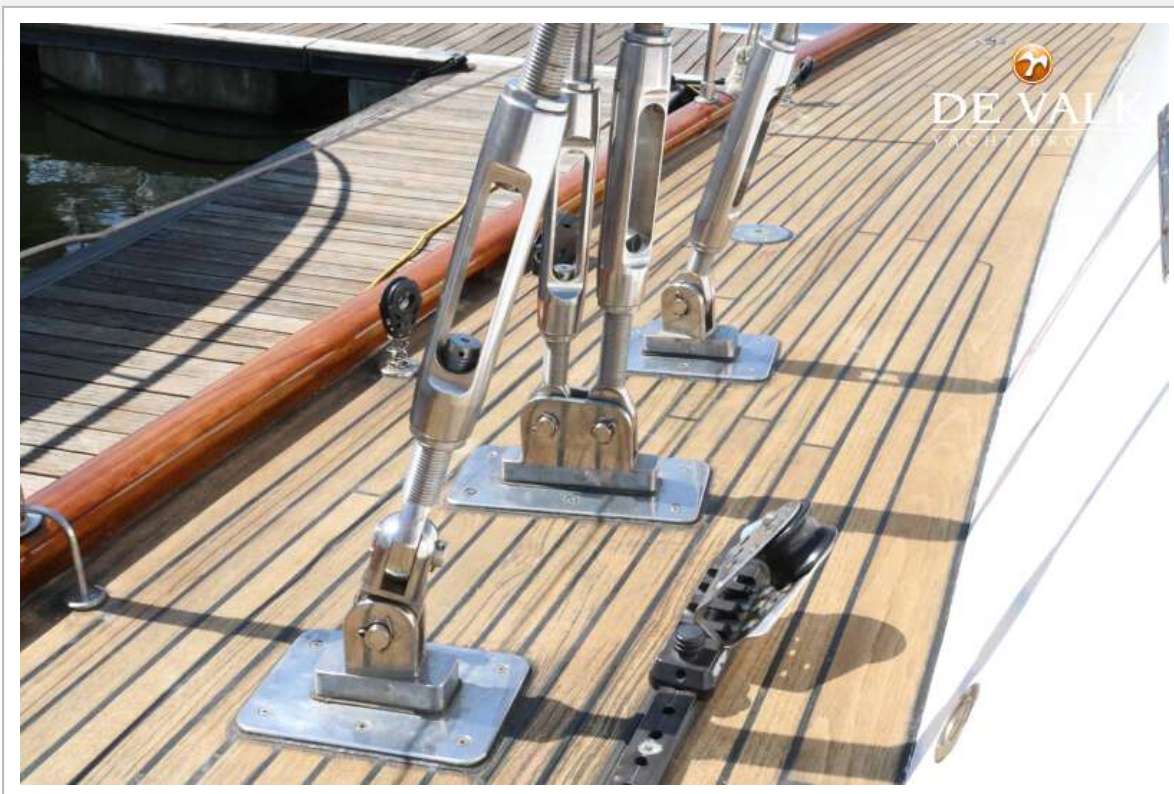


# LAGOON ROYAL CLASSIC 65

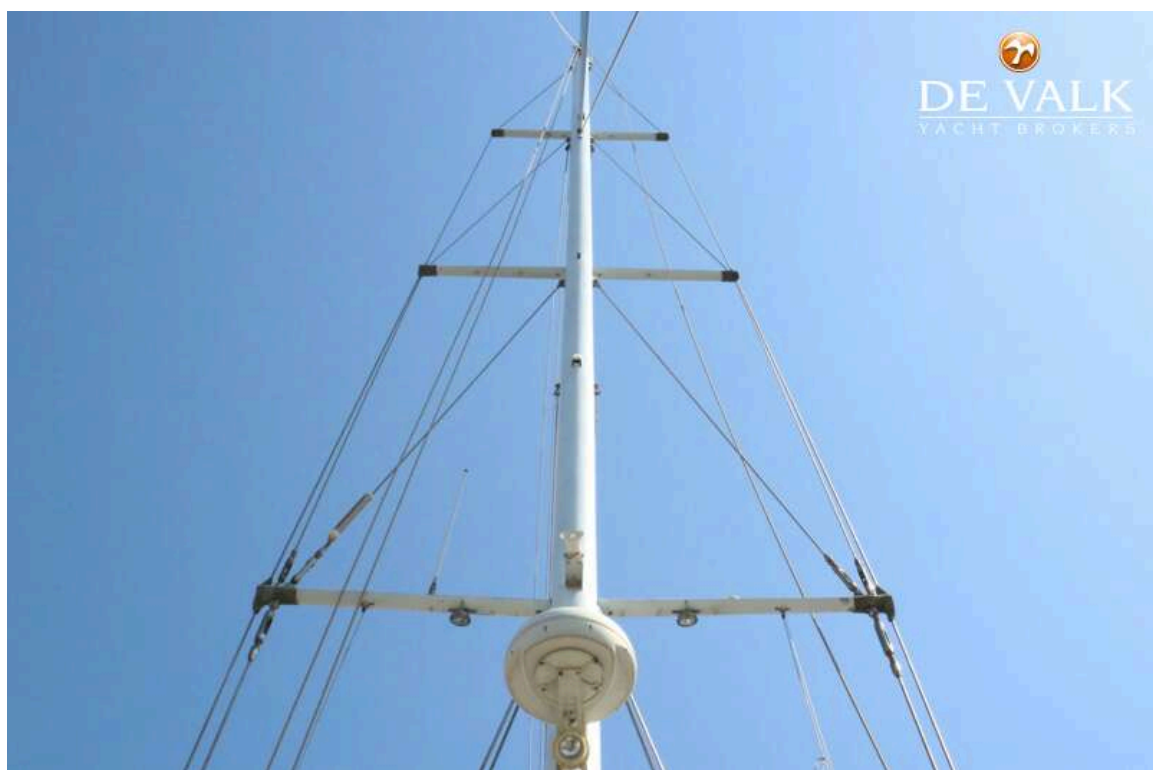




## LAGOON ROYAL CLASSIC 65

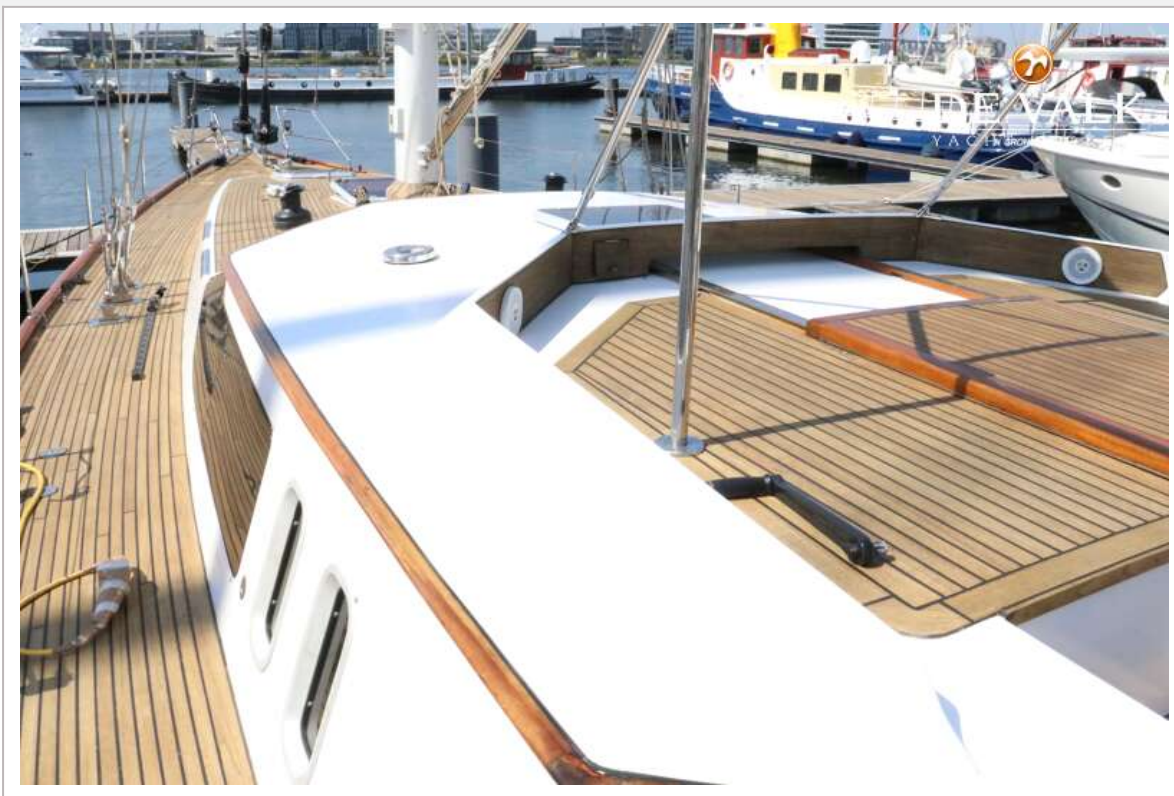


# LAGOON ROYAL CLASSIC 65



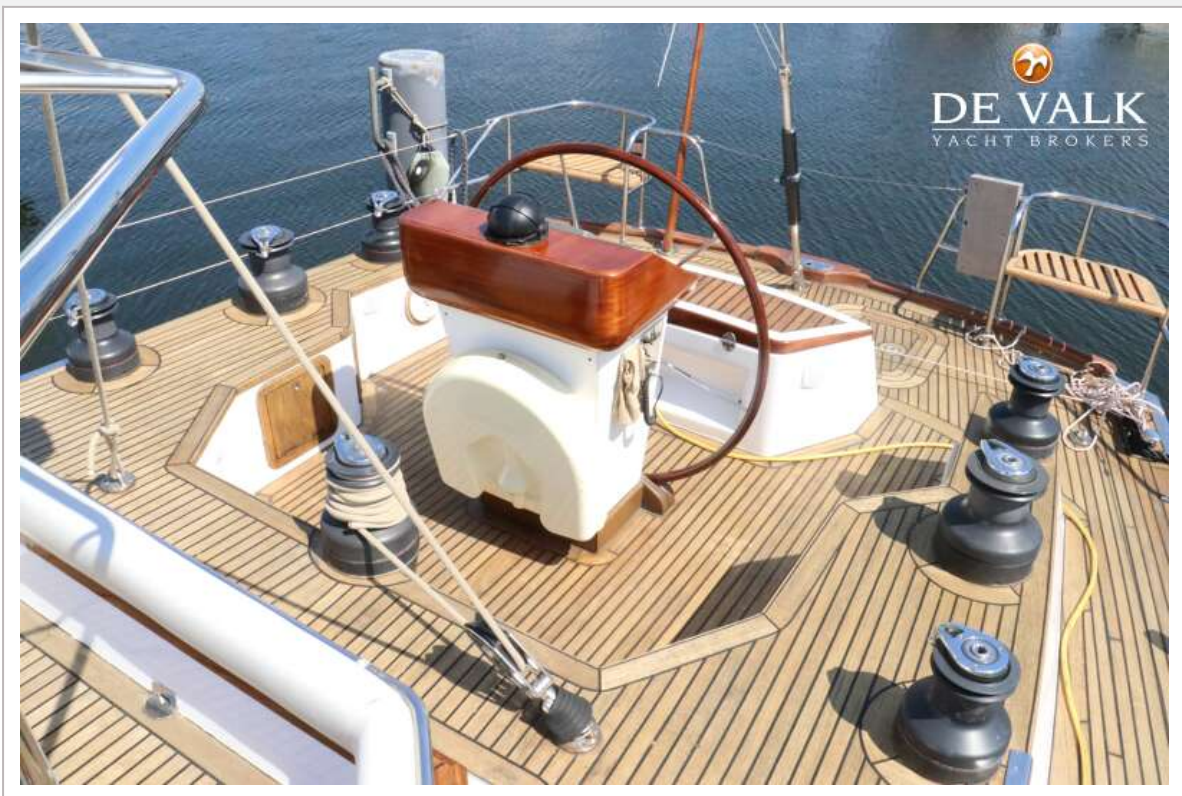


# LAGOON ROYAL CLASSIC 65



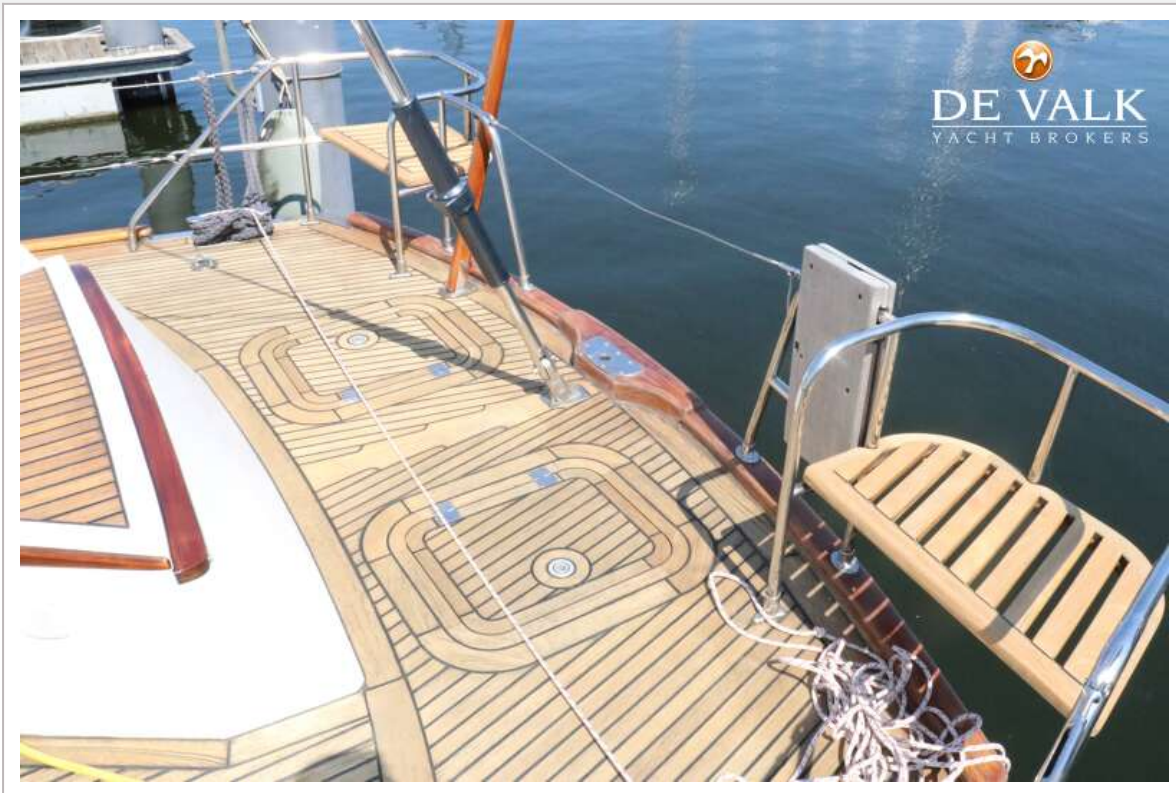


# LAGOON ROYAL CLASSIC 65





# LAGOON ROYAL CLASSIC 65

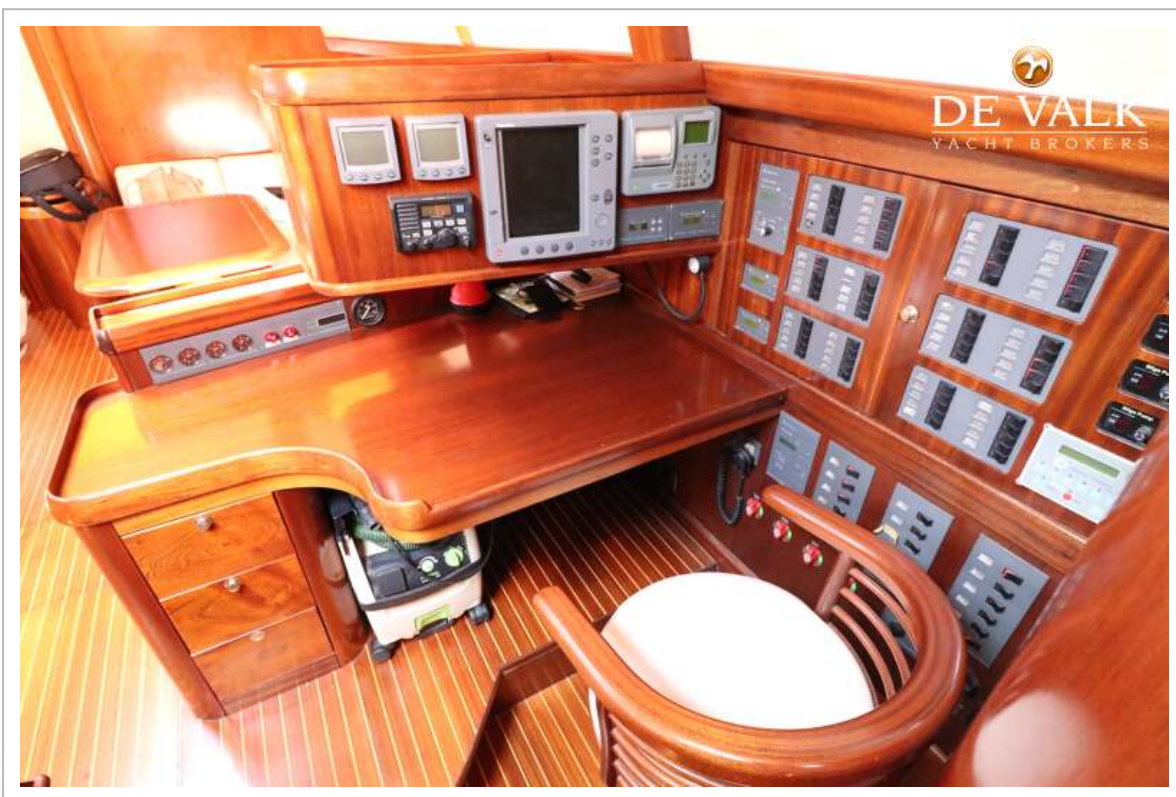


## LAGOON ROYAL CLASSIC 65

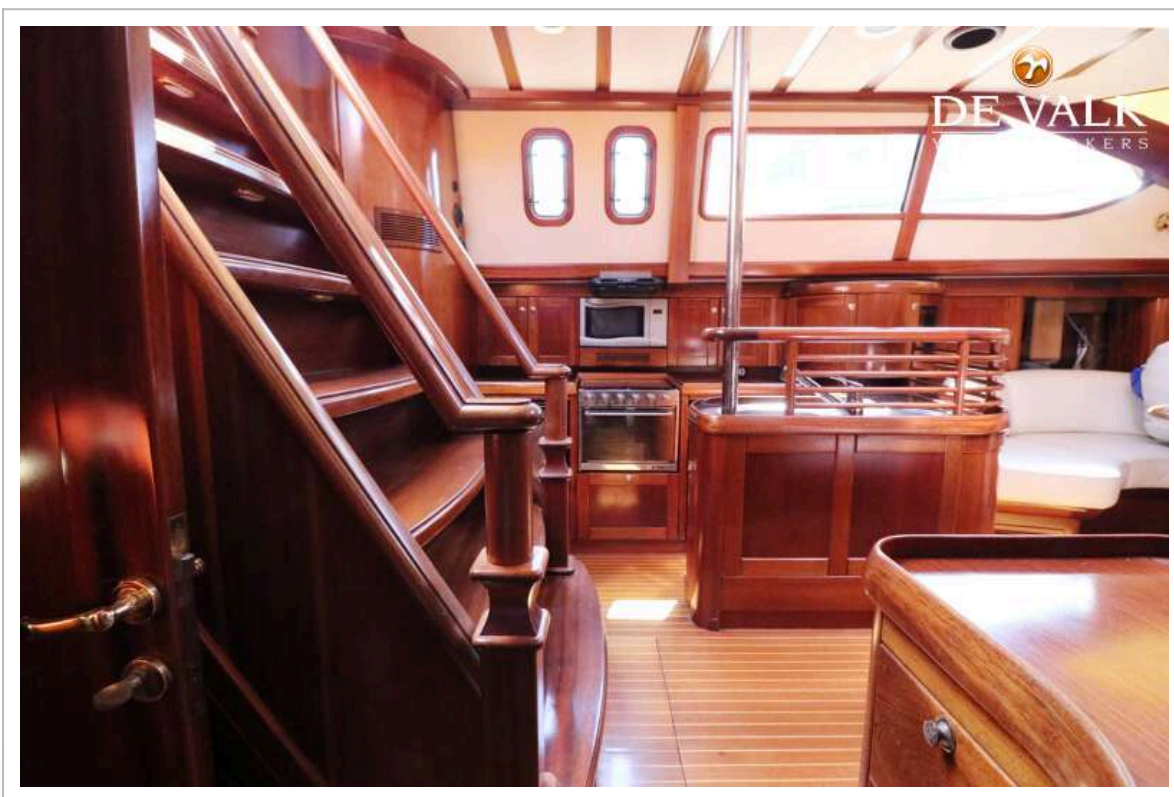
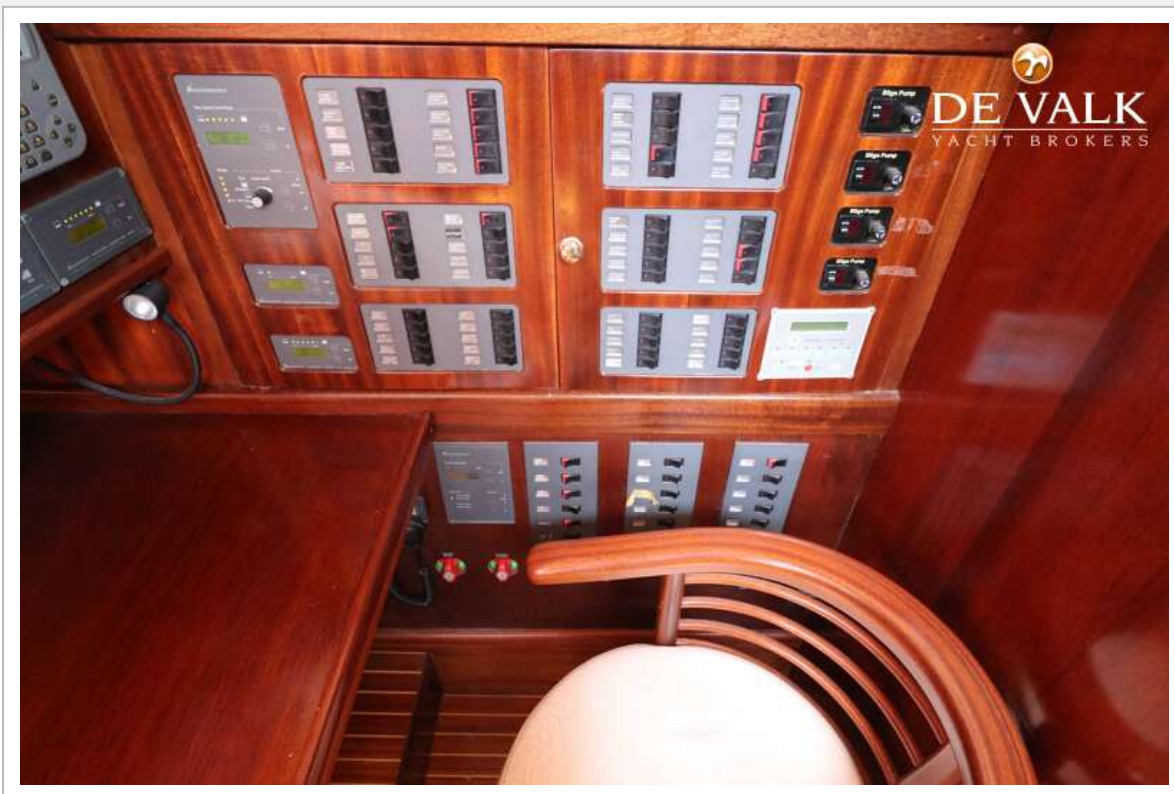




# LAGOON ROYAL CLASSIC 65



# LAGOON ROYAL CLASSIC 65

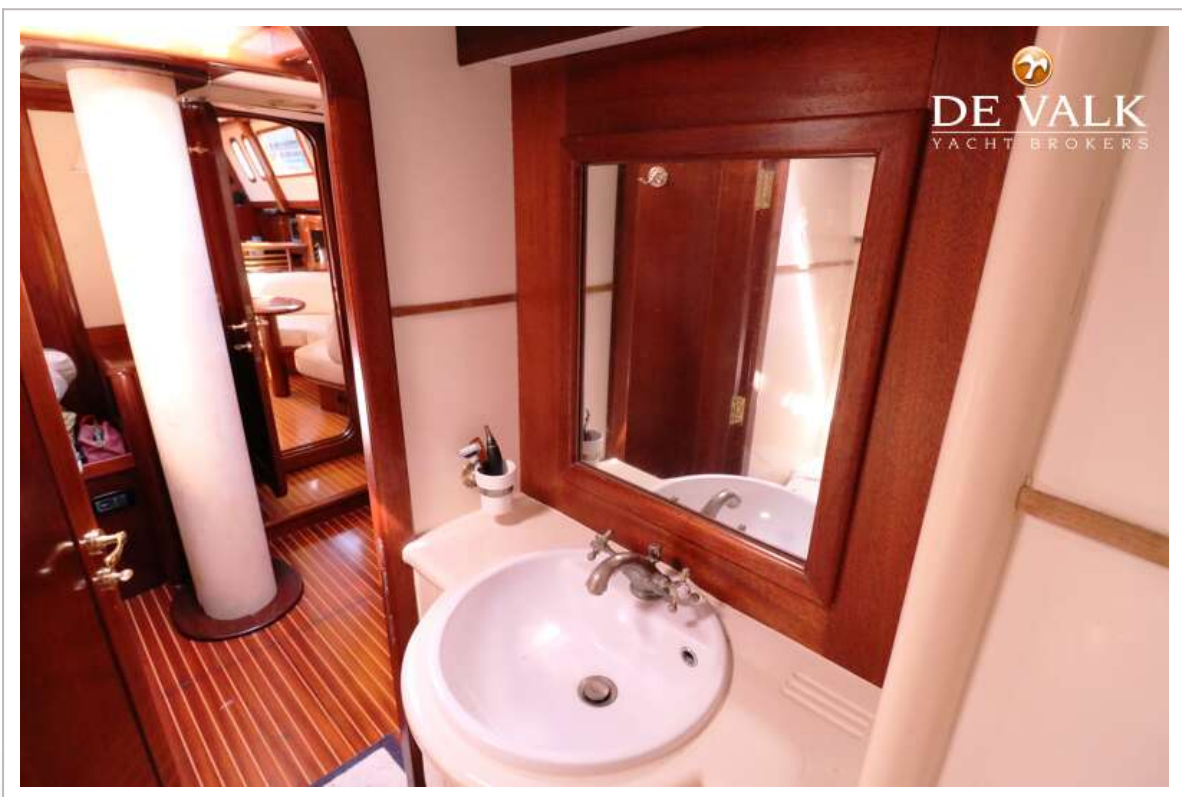
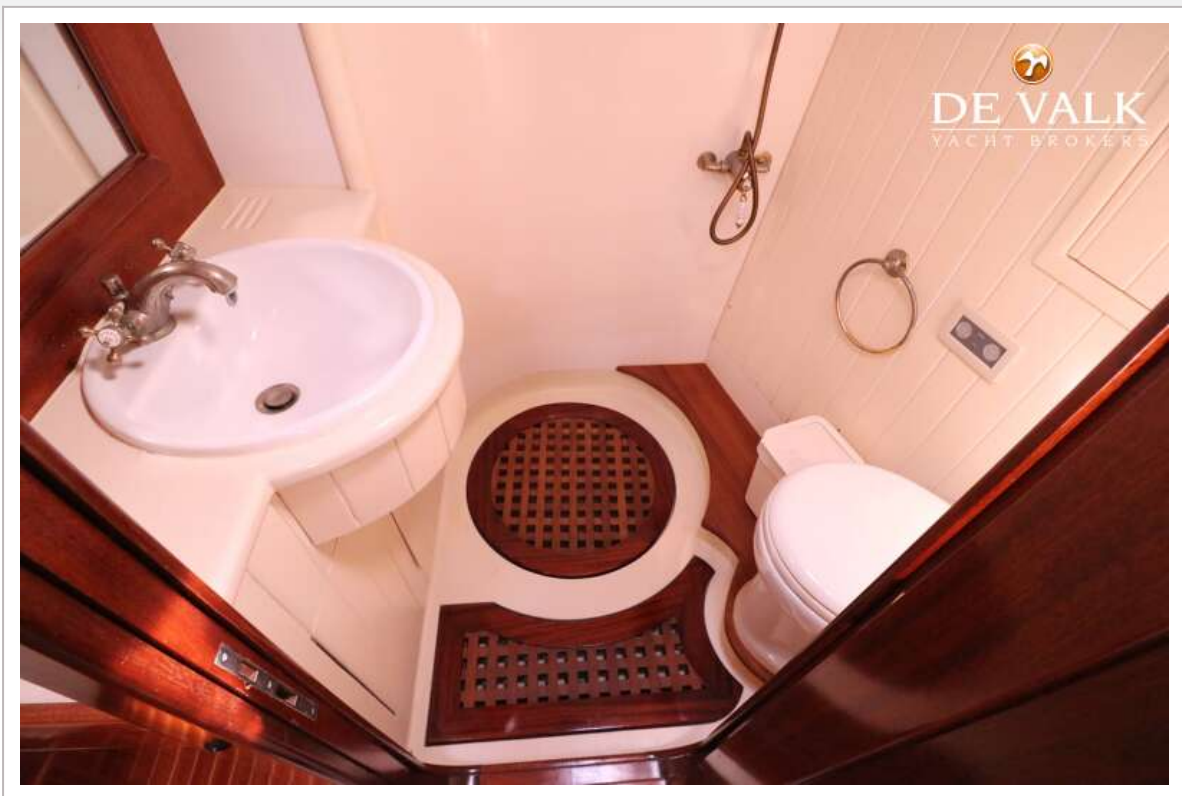




# LAGOON ROYAL CLASSIC 65

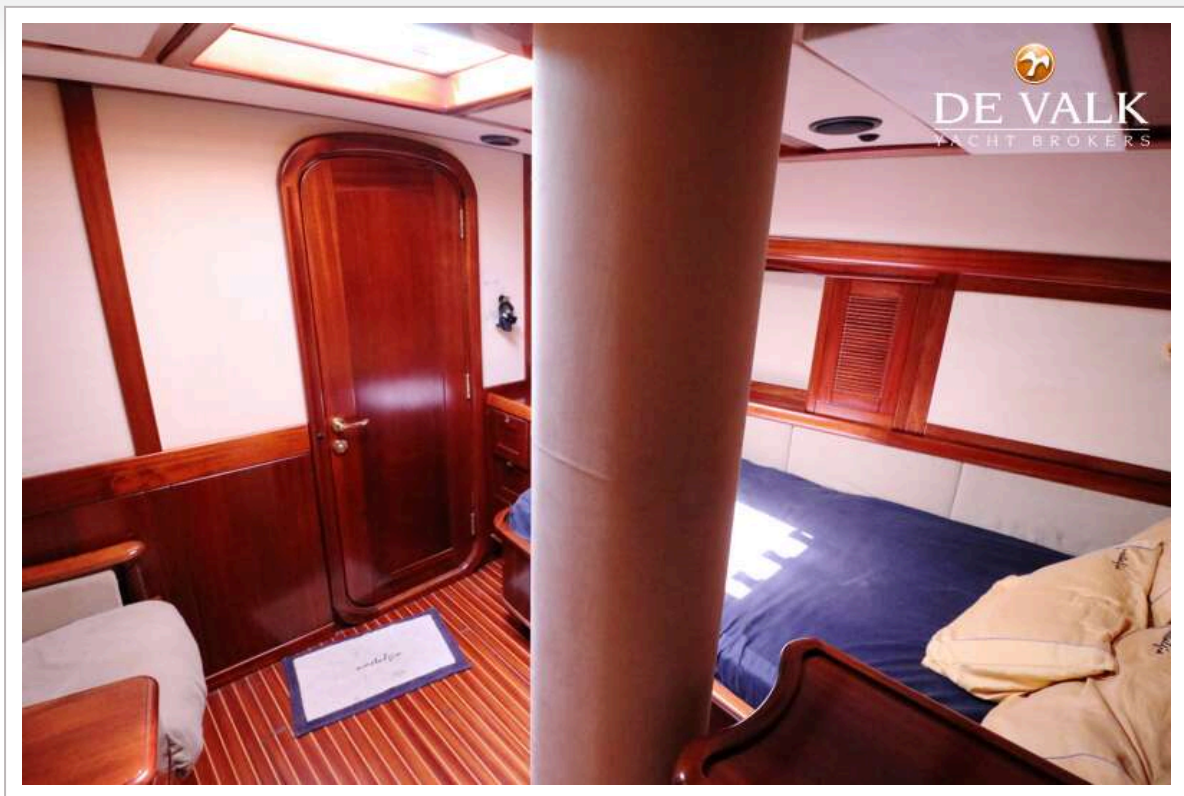


## LAGOON ROYAL CLASSIC 65

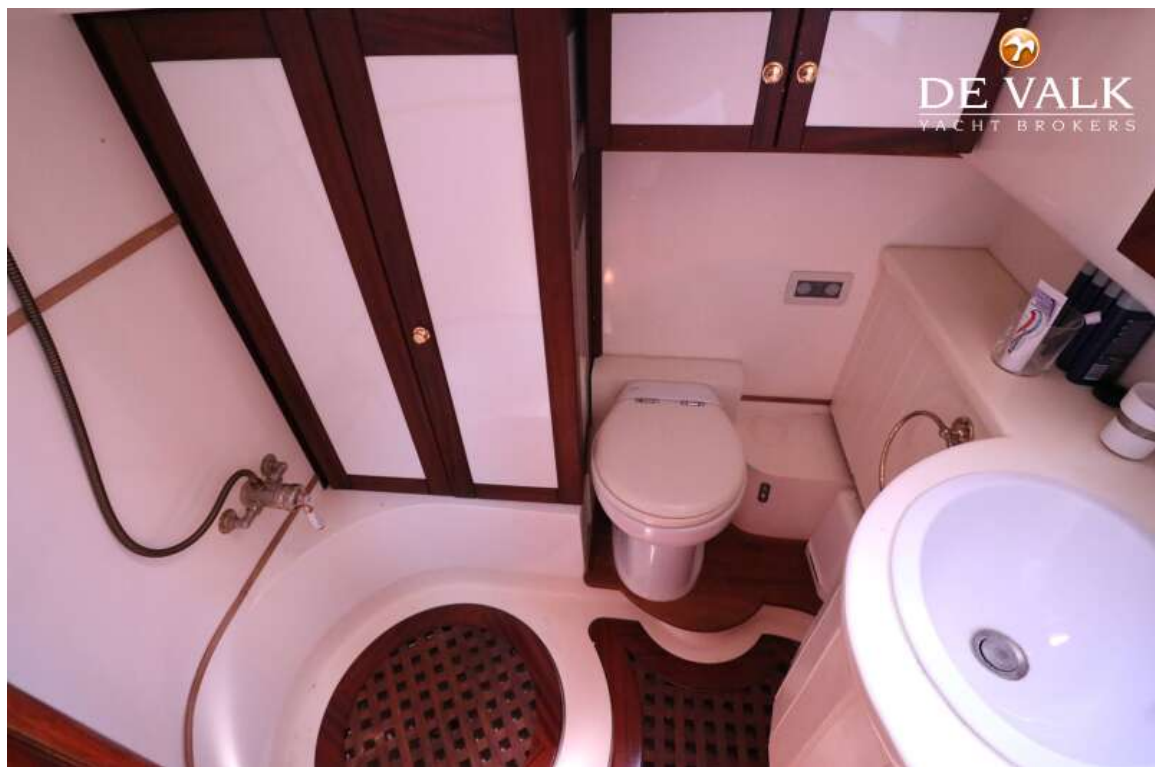
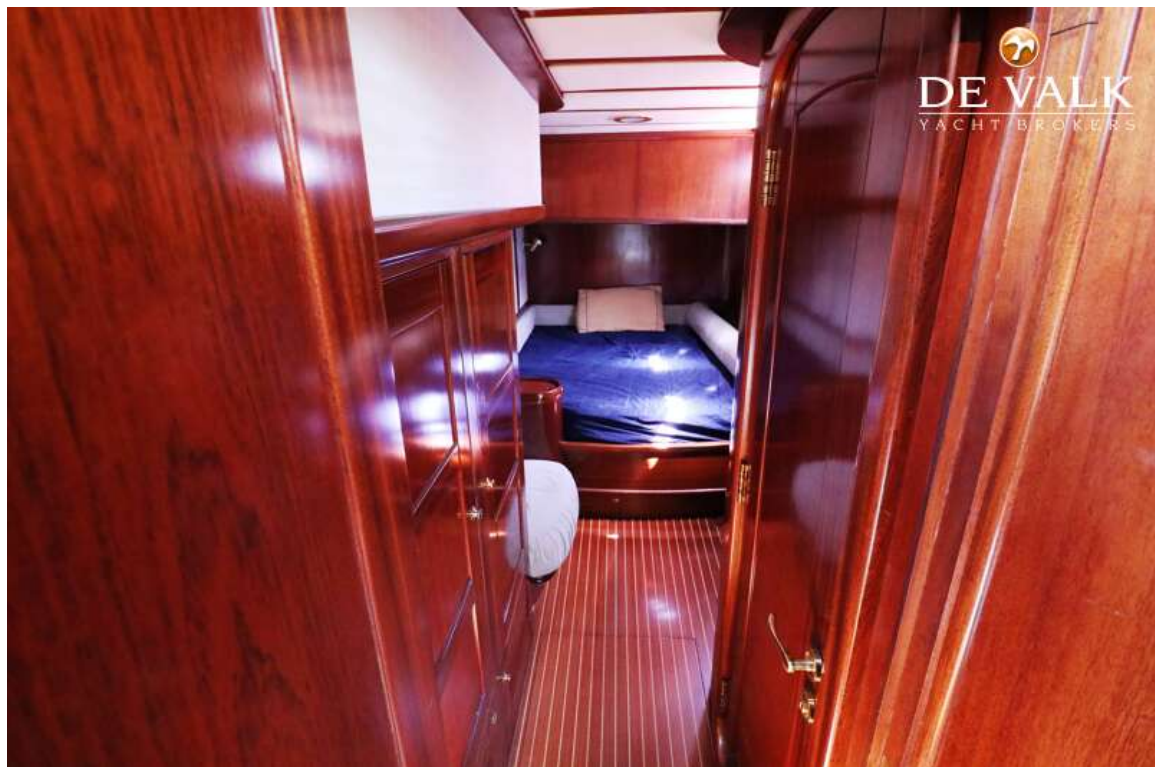




# LAGOON ROYAL CLASSIC 65

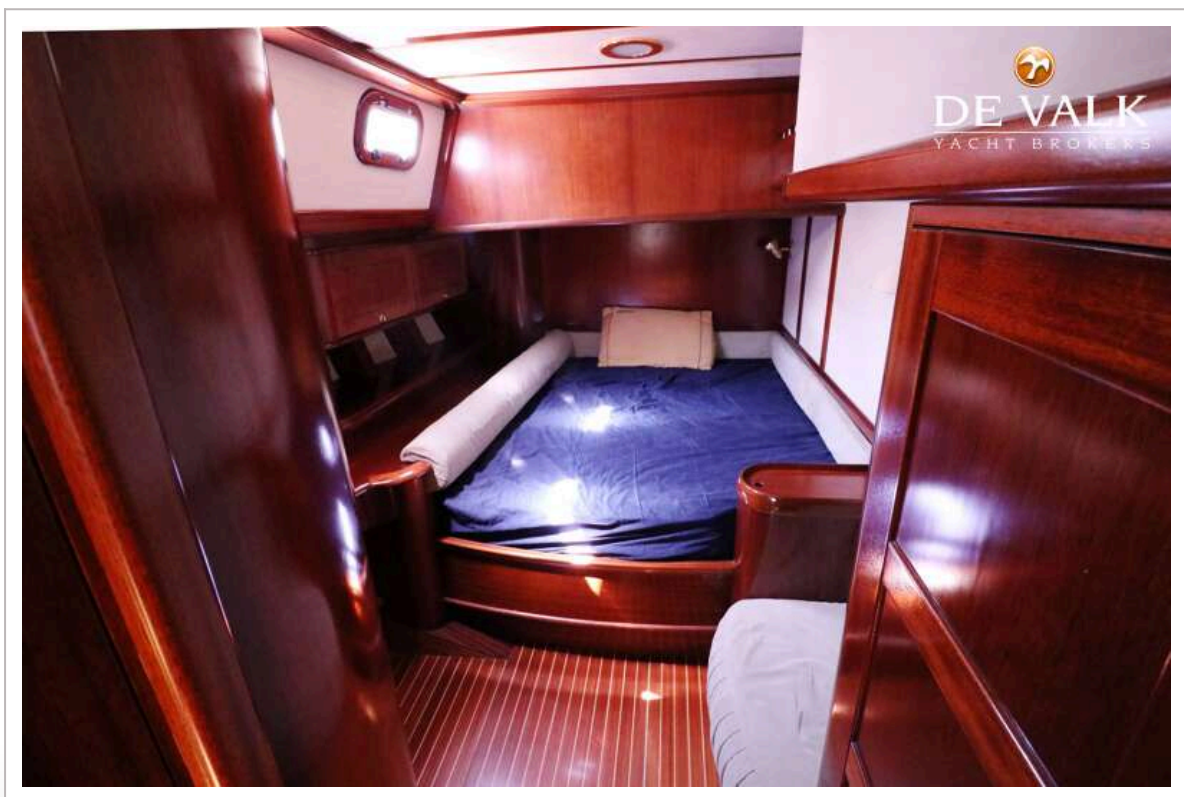
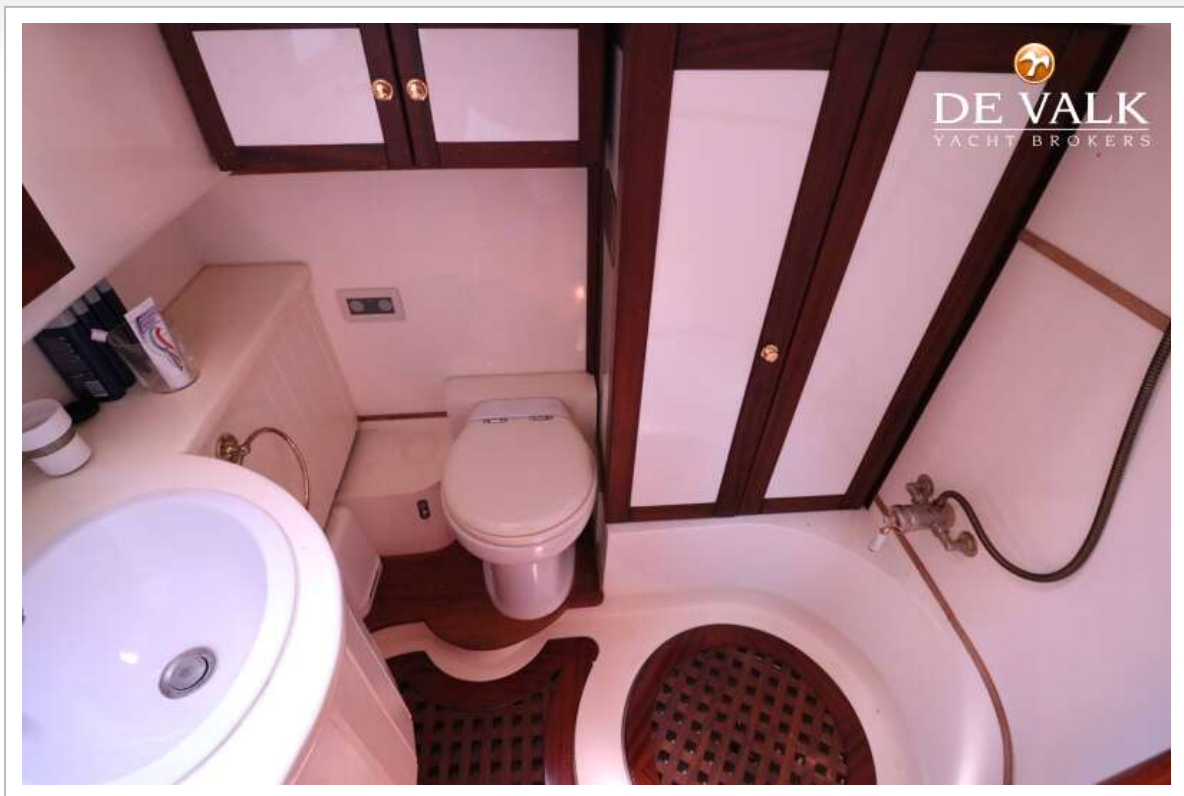


# LAGOON ROYAL CLASSIC 65





## LAGOON ROYAL CLASSIC 65



# LAGOON ROYAL CLASSIC 65



  
**DE VALK**  
YACHT BROKERS

