



## BAVARIA 35 SPORT



# BAVARIA 35 SPORT

## BROKER'S COMMENTS

Beautiful and appreciated Bavaria styling, very comfortable, handy and fast. You will certainly like this Bavaria 35 Sport. With two separate cabins ideal for sailing with family and/or guests. The space on deck and in the cockpit (including a wet bar) is "the place to be" on those beautiful summer days and evenings. In short she deserves to be a real "pleasure" craft. Gasoline isn't that expensive? No, considering the much higher purchase price of a diesel version. These engines are quiet, cleaner and more powerful. She can be viewed by appointment in the Netherlands.

*Marc Weijenberg*

## SPECIFICATIONS

<b>Dimensions</b>	11.40 x 3.68 x 0.90 (m)	<b>Builder</b>	Bavaria Yachtbau GmbH
<b>Built</b>	2005	<b>Cabins</b>	2
<b>Material</b>	GRP	<b>Berths</b>	4
<b>Engine(s)</b>	2 x Volvo Penta GXi 5,7 petrol	<b>Hp/Kw</b>	2 x 320.00 (hp), 235.20 (kw)
<b>Asking price</b>	sold (VAT )	<b>Lying</b>	elsewhere / Not at sales office

## CONTACT

<b>Sales office</b>	De Valk Thuishaven	<b>Telephone</b>	+31 35 5829042
<b>Address</b>	Peperstraat 7 1411 PX Naarden NL	<b>E-mail</b>	thuishaven@devalk.nl

## DISCLAIMER

These particulars are given in good faith as supplied but cannot be guaranteed.



## GENERAL

Model	BAVARIA 35 SPORT
Type	motor yacht
LOA (m)	11,40
Beam (m)	3,68
Draft (m)	0,90
Air draft (m)	3,20
Headroom (m)	1,95
Year built	2005
Builder	Bavaria Yachtbau GmbH
Country	Germany
Designer	Bavaria Yachtbau
Displacement (t)	8,5
CE norm	B
Hull material	GRP
Hull colour	white
Hull shape	yes
Superstructure material	GRP
Rubbing strake	stainless steel
Deck material	GRP
Deck finish	non-skid moulded in
Superstructure deck finish	non-skid moulded in
Cockpit deck finish	non-skid moulded in
Antifouling (year)	2022
Window frame	stainless steel
Window material	polycarbonate
Deckhatch	3 x
Portholes	6 x
Radar arch	non collapsible
Fuel tank (litre)	stainless steel 780
Freshwater tank (litre)	polyethylene 250



<b>Blackwater tank (litre)</b>	polyethylene 70
<b>Blackwater tank extraction</b>	deck extraction + uw line
<b>Wheel steering</b>	hydraulic Power assisted

## ACCOMMODATION

<b>Cabins</b>	2
<b>Berths</b>	4
<b>Interior</b>	cherry
<b>Floor</b>	woodprint
<b>Open cockpit</b>	yes
<b>Saloon</b>	yes
<b>Headroom saloon (m)</b>	2,00 - 1,90
<b>Aft Cabin</b>	with double bed and settee
<b>Dinette</b>	yes
<b>Sliding door to cockpit</b>	yes
<b>Galley</b>	yes
<b>Countertop</b>	plastic
<b>Sink</b>	stainless steel
<b>Cooker</b>	Kenyo (electric 220v or alcohol)
<b>Microwave/oven combi</b>	Bosch (220v)
<b>Fridge</b>	with freezer compartment
<b>Hot water system</b>	220V + engine QL boiler
<b>Water pressure system</b>	electrical
<b>Owners cabin</b>	double bed
<b>Bed length (m)</b>	2,10 x 1,60m and headroom 1,89 m
<b>Wardrobe</b>	hanging and shelves
<b>Bathroom</b>	shared I
<b>Toilet</b>	shared
<b>Toilet system</b>	yes
<b>Wash basin</b>	in the bathroom
<b>Shower</b>	shared



# BAVARIA 35 SPORT

Guest cabin 1	double bed
Bed length (m)	2,00 x 1,55 m and headroom 1,85 m
Wardrobe	hanging and shelves
Wet bar	With electrica grill, Weaco fridge and sink

## MACHINERY

No of engines	2
Make	Volvo Penta
Type	GXi 5,7
HP	320
kW	235.20
Fuel	petrol
Year installed	2005
Maximum speed (kn)	30
Cruising speed (kn)	7
Engine hours	245
Drive	Z-drive
Gearbox	mechanical Z-Drive SX-MHP (serviced 2022)
Engine controls	yes
Bowthruster	electric Sidepower SP75
Exhaust	watercooled
Propeller type	Twin Duoprop
Manual bilge pump	yes
Electric bilge pump	yes
Electrical installation	12v/220v
Generator	wet exhaust Kohler 6EF 6kW
Running hours generator	84
Start battery	1 x 80ah
Service battery	2 x 190ah
Generator battery	1 x
Battery monitor	yes



Battery charger	50amp automatic
Shorepower	with cable
Trimtabs	(serviced 2022) Lenco
Extra info	Electrical engine hatch lifter

## NAVIGATION

Compass	Ritchie
Depth sounder	Bavaria VDO
Log	Bavaria VDO
VHF	Furuno FM-2721
Radar	Furuno
GPS	Furuno
Plotter	Furuno Navnet VX2
Electronic chart(s)	Navionics
Navigation lights	yes

## EQUIPMENT

Fixed windscreen	yes
Sprayhood	(2019)
Cockpit cover	side panels can be taken off (2019)
Cockpit cushions	+ sundeck cushions
Cockpit table	yes
Bathing platform	yes
Boarding ladder	stainless steel
Transom door	yes
Deck shower	hot+cold
Anchor	Delta
Anchor chain	yes
Windlass	electrical Quick (12v)
Sea railing	yes
Grab rail (superstructure)	stainless steel



Pulpit	yes
Lifebuoy	yes
Wiper	yes
Horn	yes
Fenders	yes
Mooring lines	yes
Radio-cd player	Boss
Cockpit speakers	yes
Speakers in salon	yes
Fire extinguisher	yes





# BAVARIA 35 SPORT





# BAVARIA 35 SPORT



# BAVARIA 35 SPORT

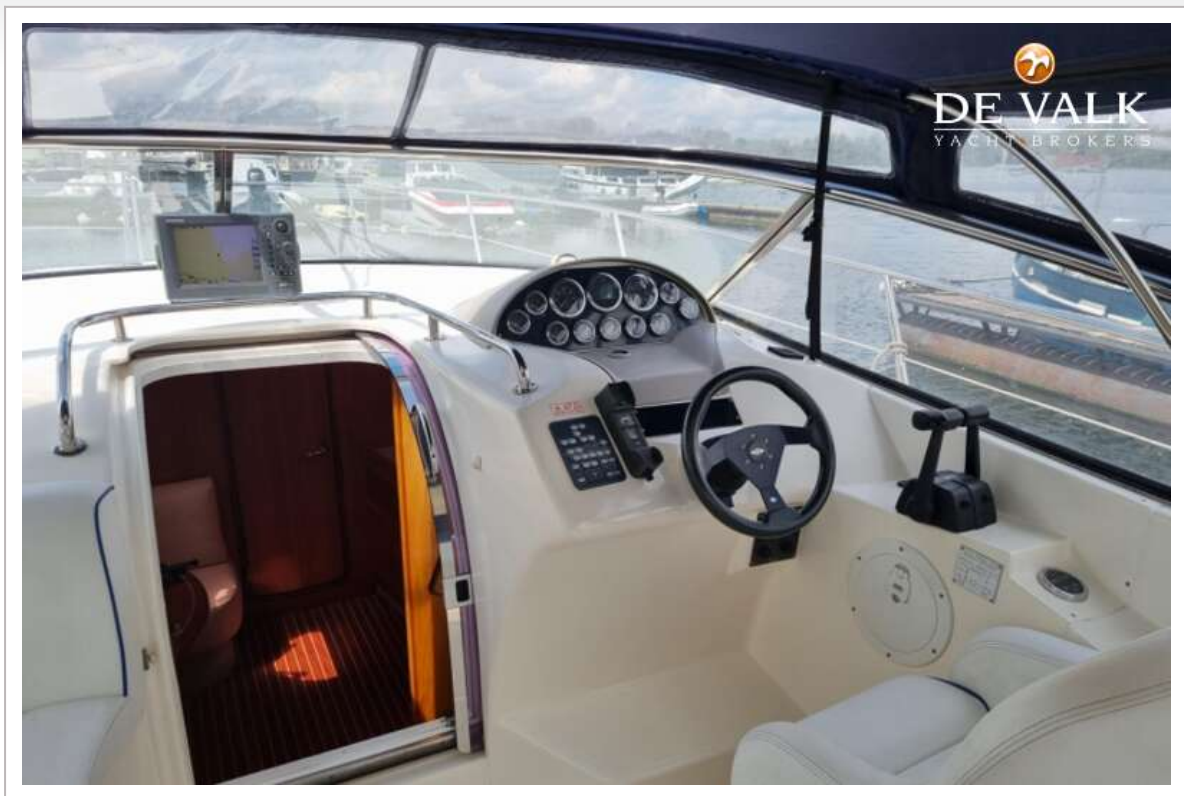




# BAVARIA 35 SPORT



# BAVARIA 35 SPORT



# BAVARIA 35 SPORT





# BAVARIA 35 SPORT

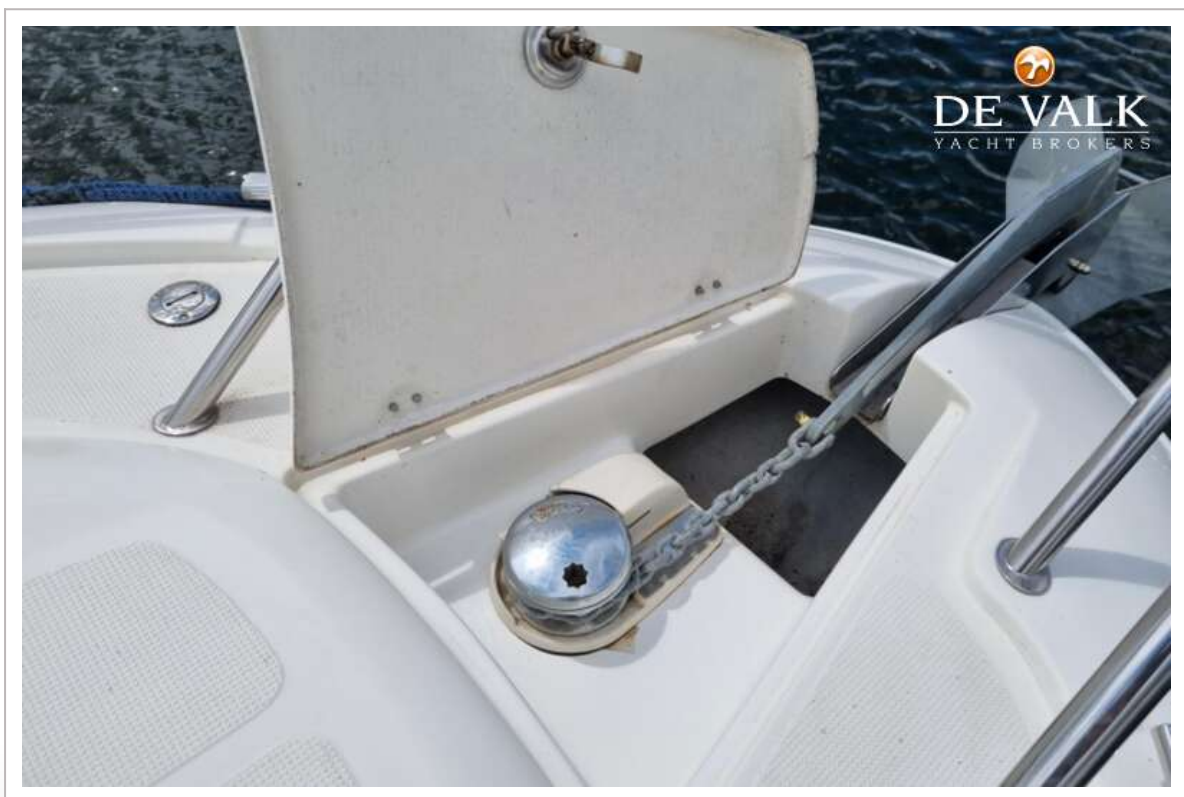




# BAVARIA 35 SPORT



# BAVARIA 35 SPORT





# BAVARIA 35 SPORT



# BAVARIA 35 SPORT

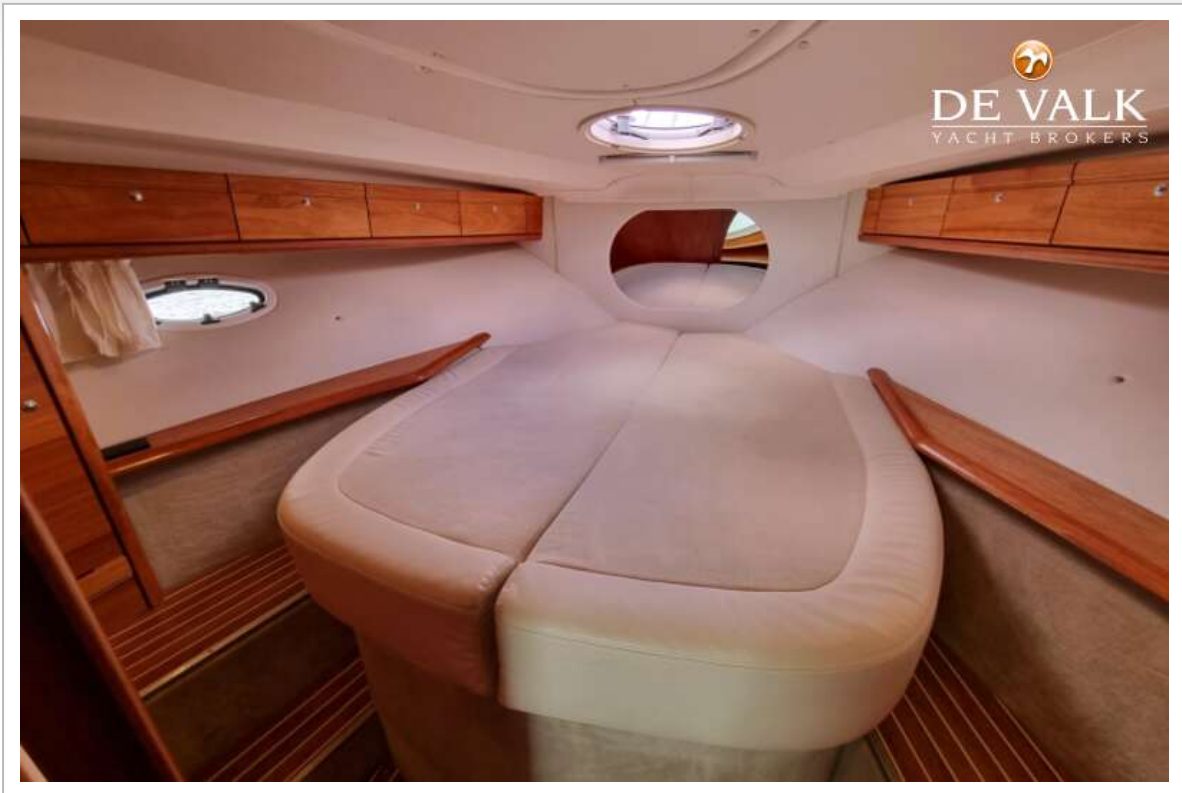




# BAVARIA 35 SPORT



# BAVARIA 35 SPORT

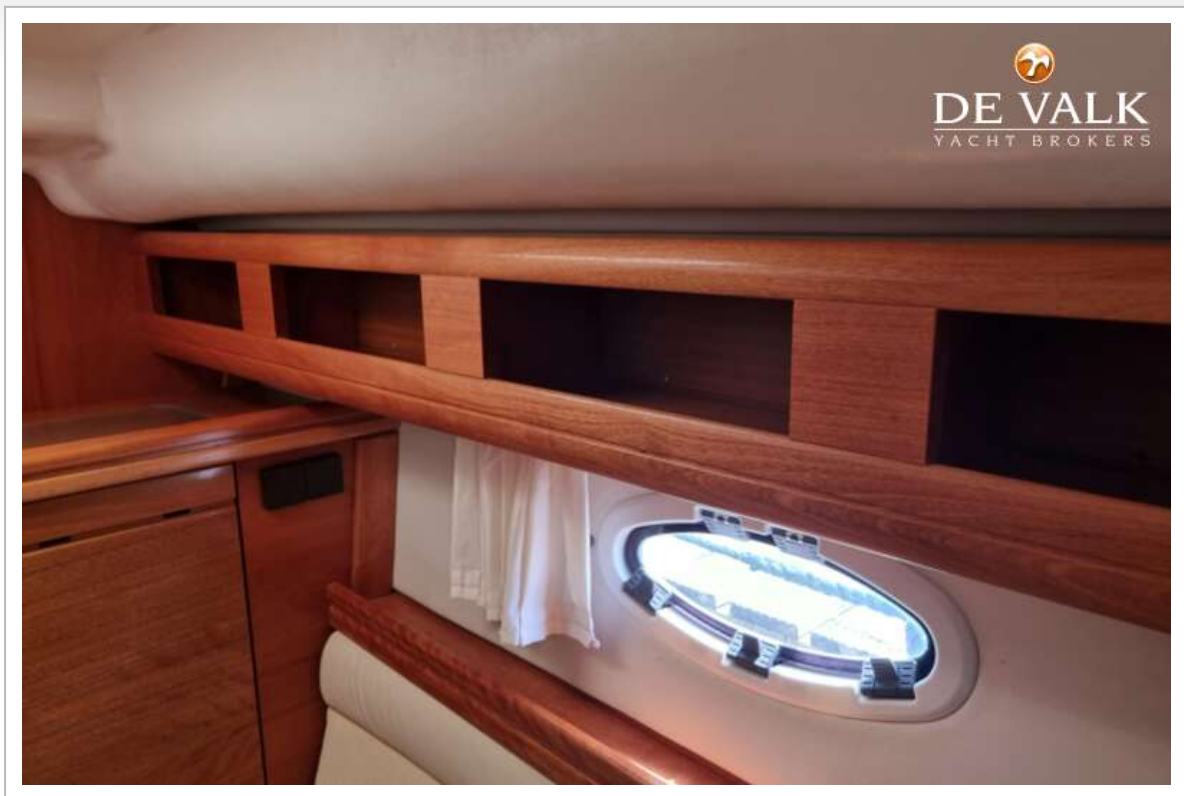




# BAVARIA 35 SPORT



# BAVARIA 35 SPORT





# BAVARIA 35 SPORT



# BAVARIA 35 SPORT

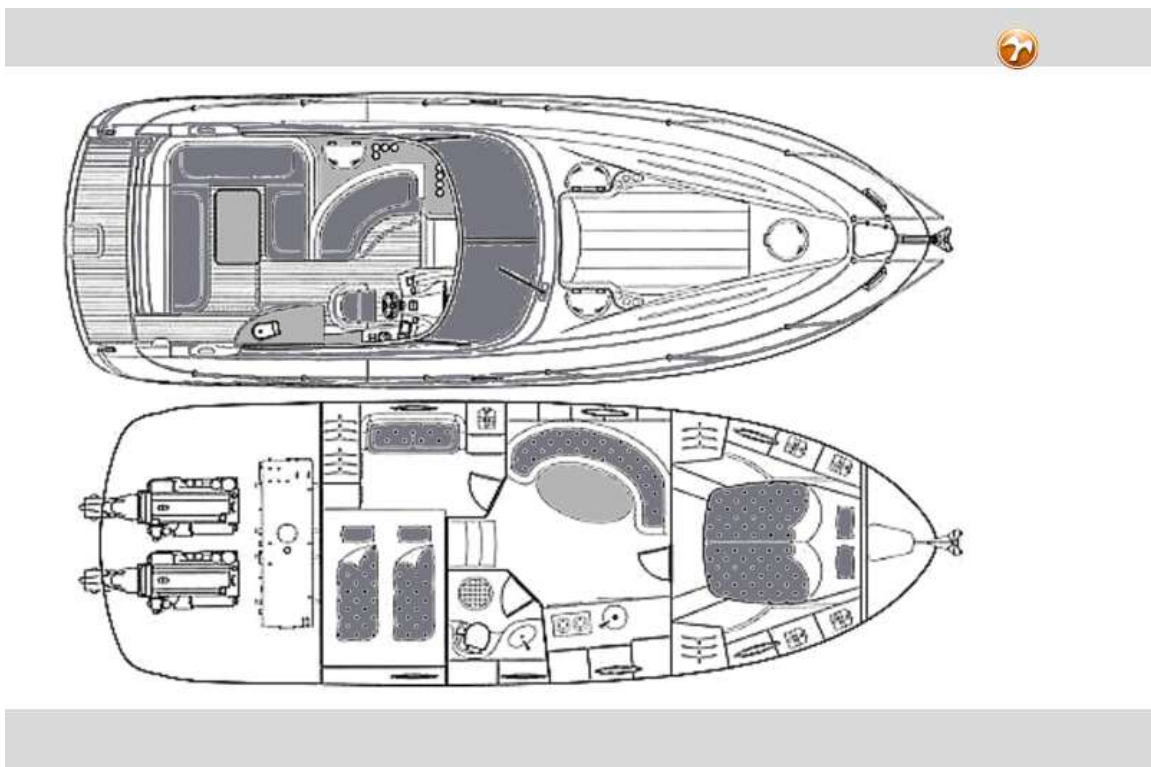




# BAVARIA 35 SPORT

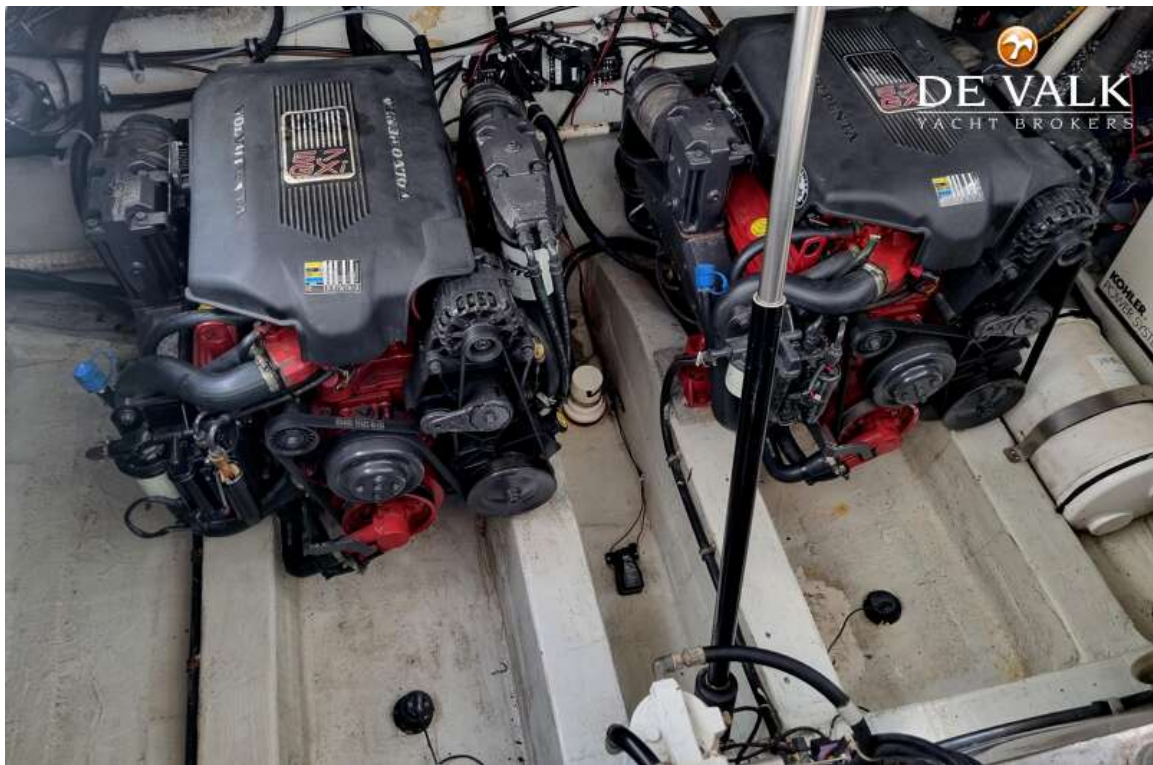


# BAVARIA 35 SPORT

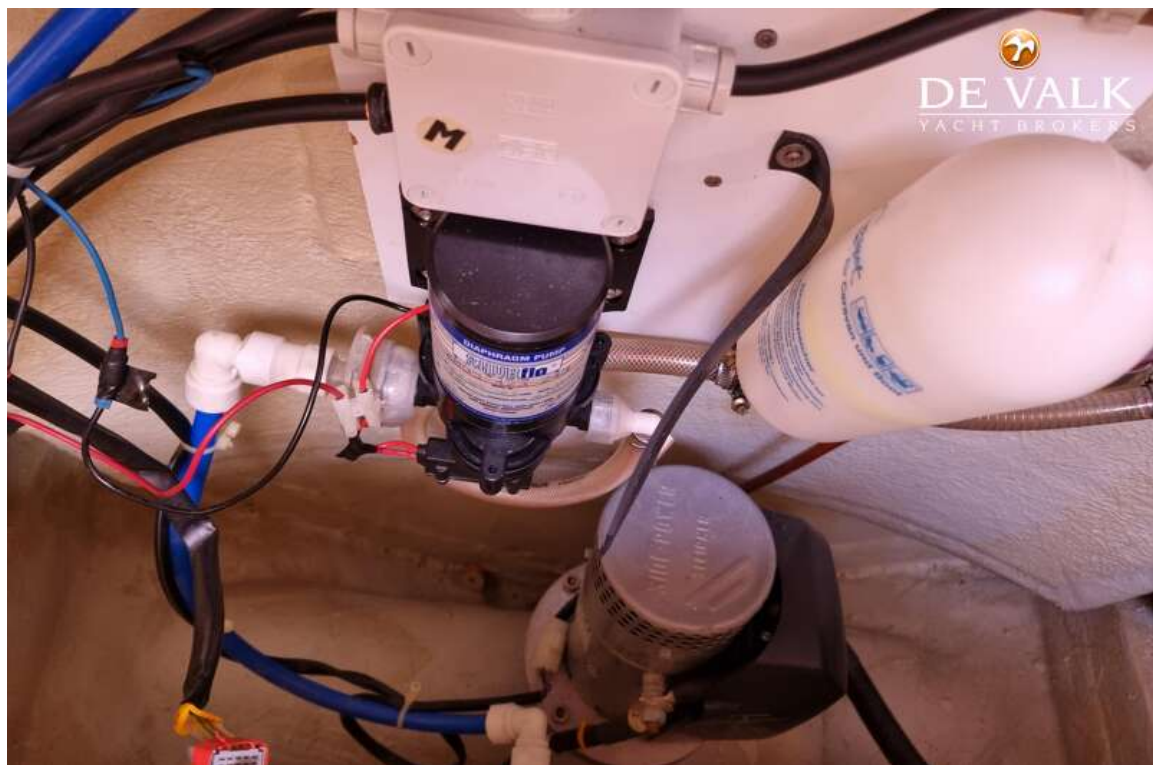
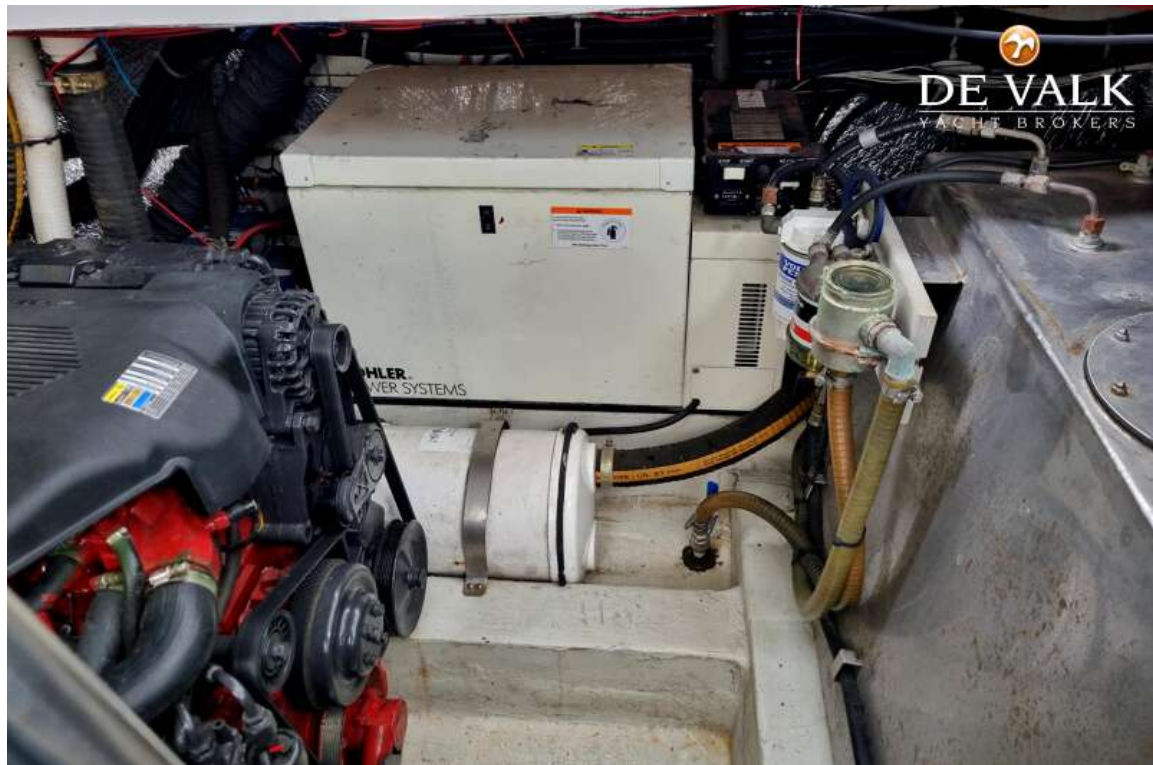




# BAVARIA 35 SPORT



# BAVARIA 35 SPORT





# BAVARIA 35 SPORT

