



WINNER 9

WINNER 9

BROKER'S COMMENTS

Following the trend of refreshing a classic concept, the new Winner 9 is a very good example. On and below deck, owners will be surprised what can be achieved on a “only” nine 9 meter yacht without compromising the sail performance for what she was designed for. Where many modern yachts are built for comfort only, they lack the joy and spirit in sailing a performance yacht. Steady on the helm, but sprinting to the finish line, the Winner 9 has earned her place. The perfect young family performance yacht. Beating the expensive new build prices, this 1 owner Winner is now readily available.

Marc Weijenberg

SPECIFICATIONS

Dimensions	9.00 x 2.96 x 1.25 (m)	Builder	Winner Yachts
Built	2016	Cabins	2
Material	GRP	Berths	6
Engine(s)	1 x Yanmar 2YM15 diesel	Hp/Kw	14.00 (hp), 10.29 (kw)
Asking price	sold (VAT)	Lying	elsewhere / Not at sales office

CONTACT

Sales office	De Valk Thuishaven	Telephone	+31 35 5829042
Address	Peperstraat 7 1411 PX Naarden NL	E-mail	thuishaven@devalk.nl

DISCLAIMER

These particulars are given in good faith as supplied but cannot be guaranteed.



GENERAL

Model	WINNER 9
Type	sailing yacht
LOA (m)	9,00
LWL (m)	8,00
Beam (m)	2,96
Draft (m)	1,25
Air draft (m)	13,50
Headroom (m)	1,90
Year built	2016
Builder	Winner Yachts
Country	The Netherlands
Designer	Van de Stadt Design / Van Tongeren
Displacement (t)	3,3
Ballast (tonnes)	1,35
CE norm	A
Hull material	GRP
Hull colour	white
Hull shape	round-bilged
Keel type	bulb keel
Superstructure material	GRP
Deck material	GRP
Deck finish	non-skid moulded in
Antifouling (year)	2022
Window material	polycarbonate
Deckhatch	with blind/mosquitonet 1 x
Portholes	aluminium
Fuel tank (litre)	polyethylene 70
Freshwater tank (litre)	polyethylene 140
Blackwater tank (litre)	polyethylene
Blackwater tank extraction	deck extraction + uw line



Tiller	yes
Extra info	The companionway doors slide down into the cockpit floor, just behind the clever sheet/halyard storage-locker.

ACCOMMODATION

Cabins	2
Berths	6
Interior	mahogany
Floor	wood
Saloon	with opposite settees and table
Headroom saloon (m)	1,90 - 1,79
Heating	diesel ducted hot air Webasto
Chart table	yes
Galley	yes
Countertop	plastic
Sink	stainless steel 1 x
Cooker	calor gas Dometic 2 burner
Oven	Dometic
Fridge	Isoterm (12v)
Hot water system	220V + engine
Water pressure system	electrical
Owners cabin	double bed
Bed length (m)	2,10 x 1,60
Wardrobe	hanging and shelves
Bathroom	shared 1
Toilet	shared
Toilet system	manual
Wash basin	in the bathroom
Guest cabin 1	v-bed
Bed length (m)	+ infill cushion 2,00 x 1,60
Extra info	12cm coldfoam mattress's



Extra info	seperate closed off cabins
Extra info	Azures blue upholstery

MACHINERY

No of engines	1
Make	Yanmar
Type	2YM15
HP	14
kW	10.29
Fuel	diesel
Year installed	2016
Maximum speed (kn)	6
Cruising speed (kn)	5
Consumption (l/hr)	2
Engine hours	220
Engine cooling system	freshwater heat exchanger
Drive	sail-drive
Saildrive seal	double seal
Engine controls	bowden cable
Gearbox	mechanical Yanmar SD25 Saildrive
Exhaust	watercooled
Propeller type	folding Flex-o-fold
Propeller blades	2
Manual bilge pump	yes
Electrical installation	12/220v
Start battery	1 x 65ah
Service battery	1 x 110ah
Battery monitor	yes
Battery charger	20amp
Shorepower	yes
Extra info	waterstrainer in coolingsystem



NAVIGATION

Compass	Plastimo Mini Contest
Depth sounder/log	Raymarine i70
Windset	Raymarine i70
VHF	Raymarine 70 +DSC
Autopilot	Raymarine ST2000+
GPS	yes
Plotter	with Wifi and Seataalk backbone Raymarine A65
AIS receiver	Raymarine
Navigation lights	+ 3 color masthead light

EQUIPMENT

Winter cover	(with mast up, some repairs needed)
Cockpit cushions	adjustable 2 x
Bathing platform	in open transom
Boarding ladder	stainless steel
Anchor	CQR Plough
Anchor chain	chain + anchor line
Sea railing	wire
Grab rail (superstructure)	stainless steel
Pushpit	yes
Pulpit	yes
Lifejackets	2 x lifelines 2 x (250n)
Safety harness	yes
Lifebuoy	2 x
Danbuoy	yes
Radar reflector	yes
Fenders	yes
Mooring lines	yes
Radio-cd player	+ Bluetooth/USB
Speakers in salon	yes



Fire extinguisher

2 x

Extra info

Fireblanket, LED flare, winchhandle bag, clock, barometer, hygrometer, 220v anti-frost heater.

RIGGING

Rigging

fractional

Standing rigging

wire

Brand mast

Z-Spar

Material mast

aluminium

Spreaders

1 set

Mast lowering system

prepared with extra's

Mainsail cover

with Lazy Jacks

Fully battened mainsail

with 3rd reefingpoint Hagoort Sails (2016)

Jib

with UV strip Hagoort Sails (2016)

Genoa furler

FD-furler

Reefing System

slabreefing

Boomvang

hydraulic

Genoa sheetwinches

2 x Harken 35ST 2-speed

Halyard winches

2 x Harken 35ST 2-speed

Gennaker pole

aluminium Retractable

Extra info

Gennaker halyard, blocks and tackle, prepared an extra removable stay for small jib.

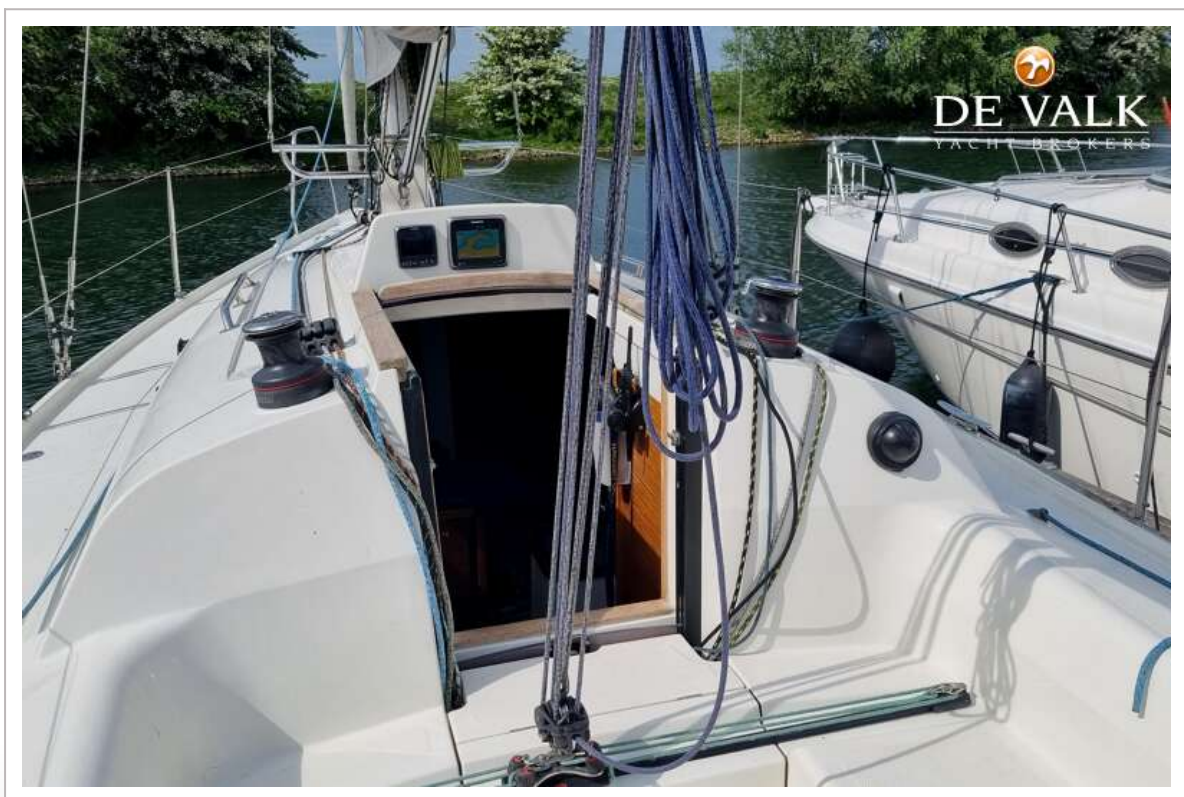


WINNER 9

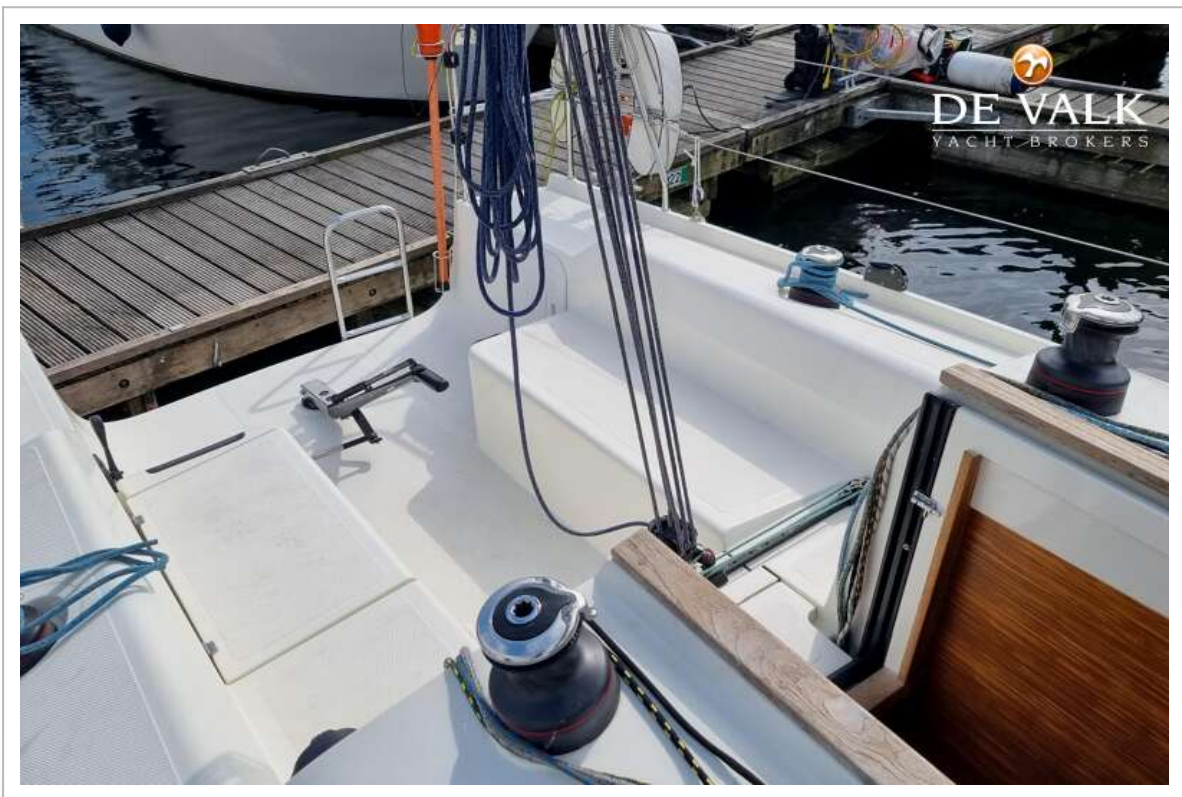


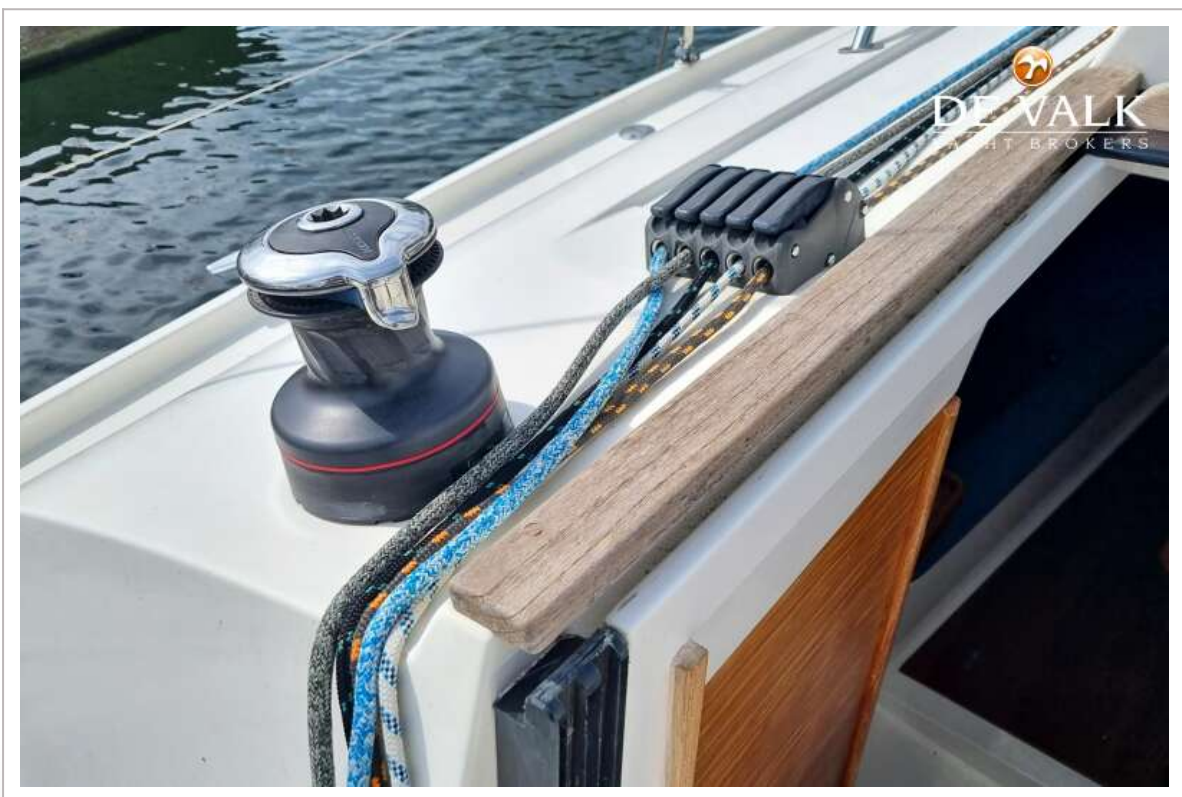
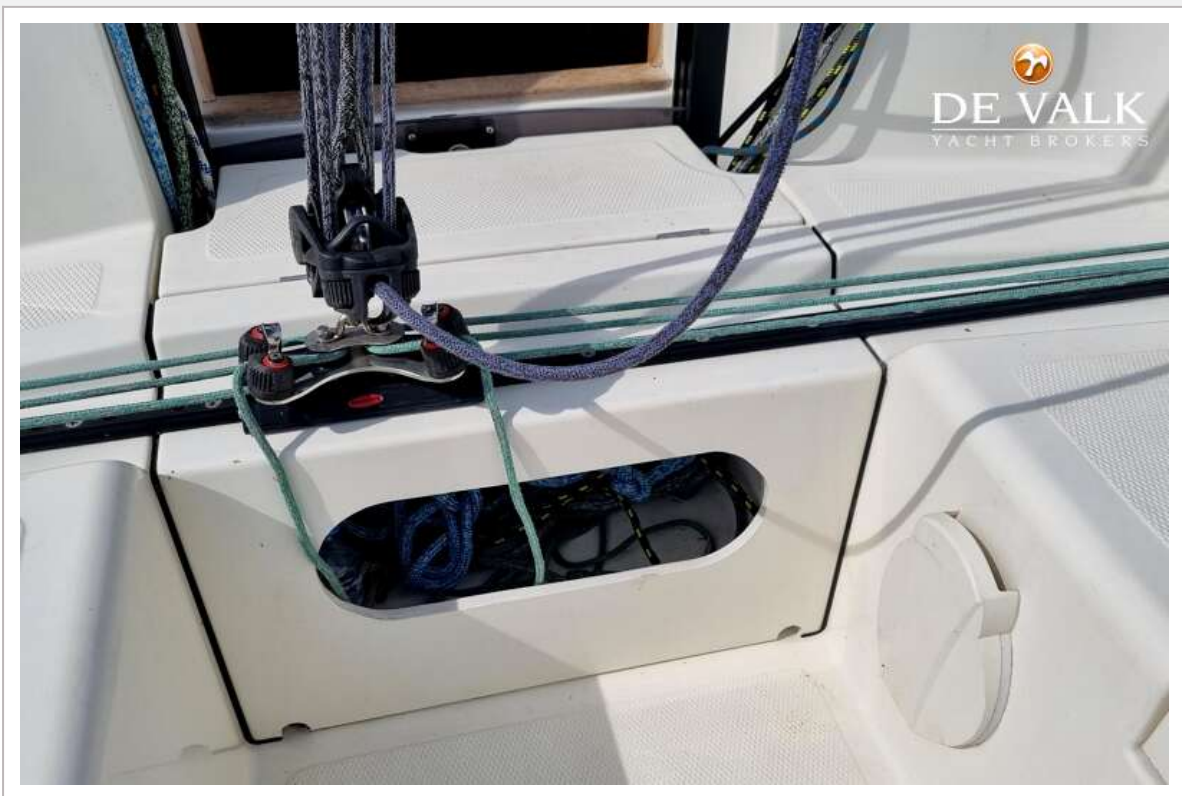
WINNER 9





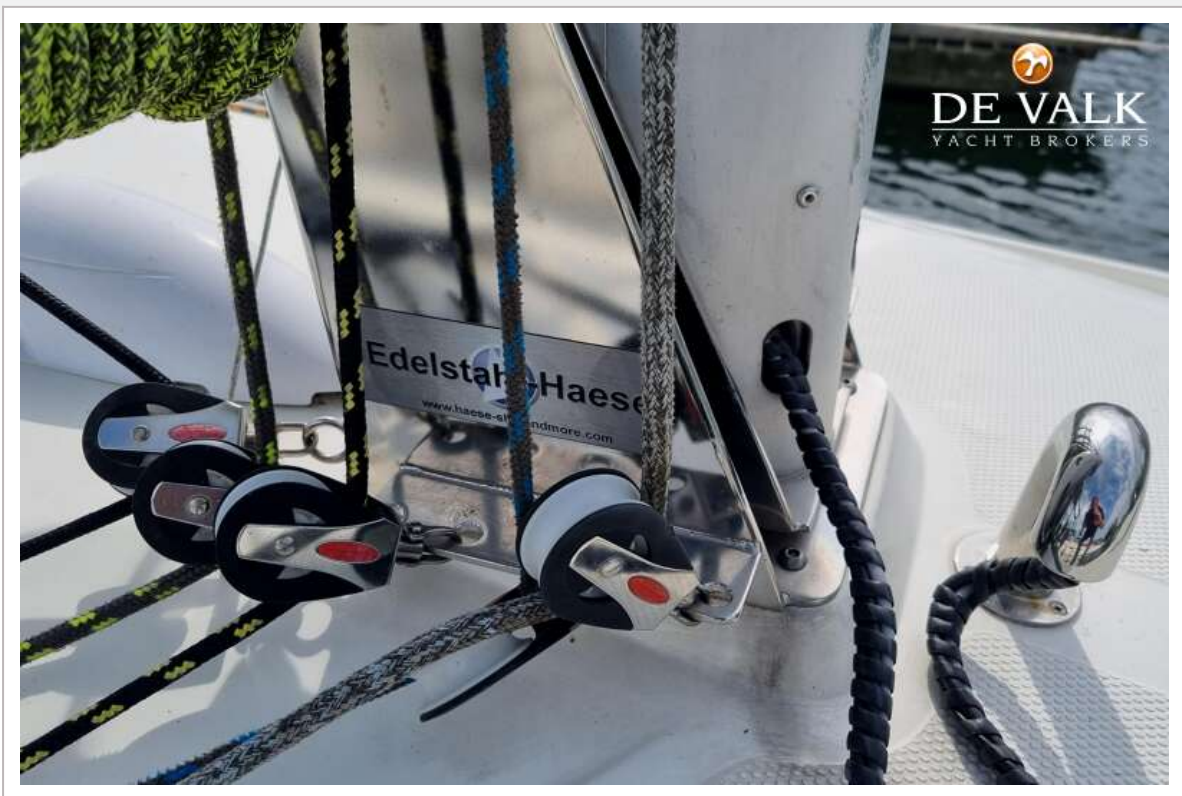
WINNER 9

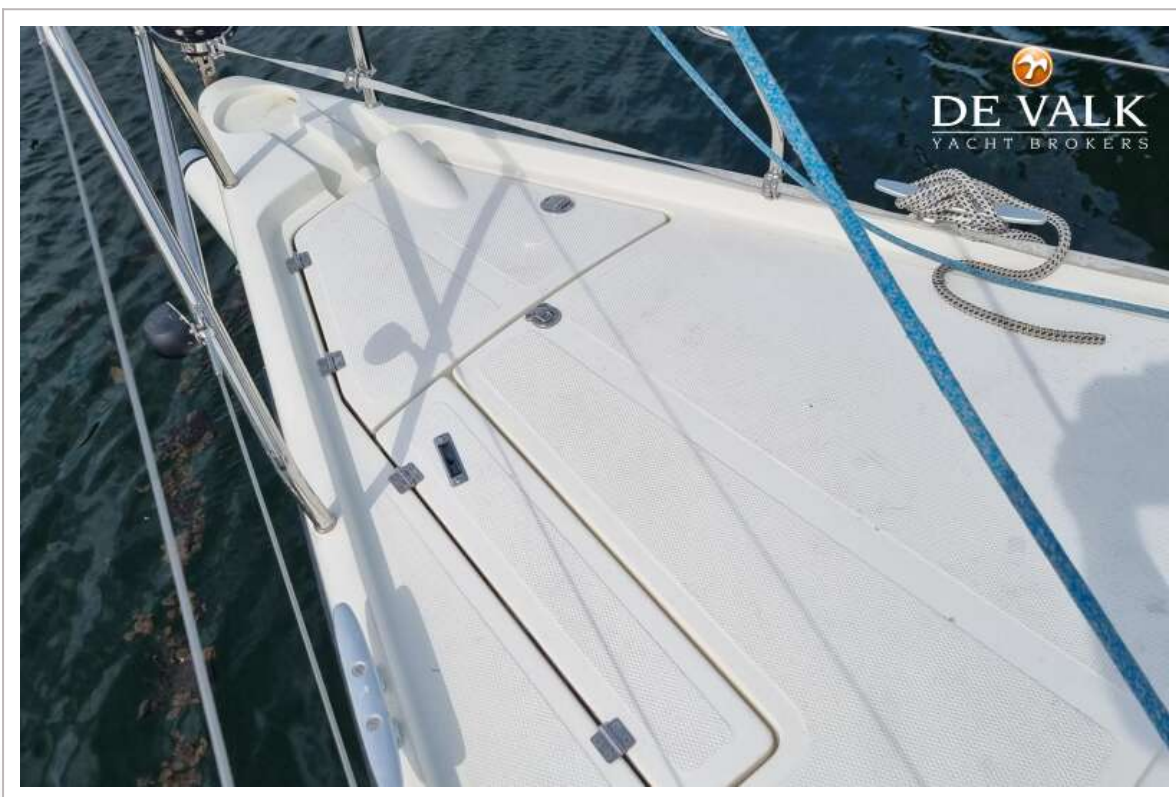
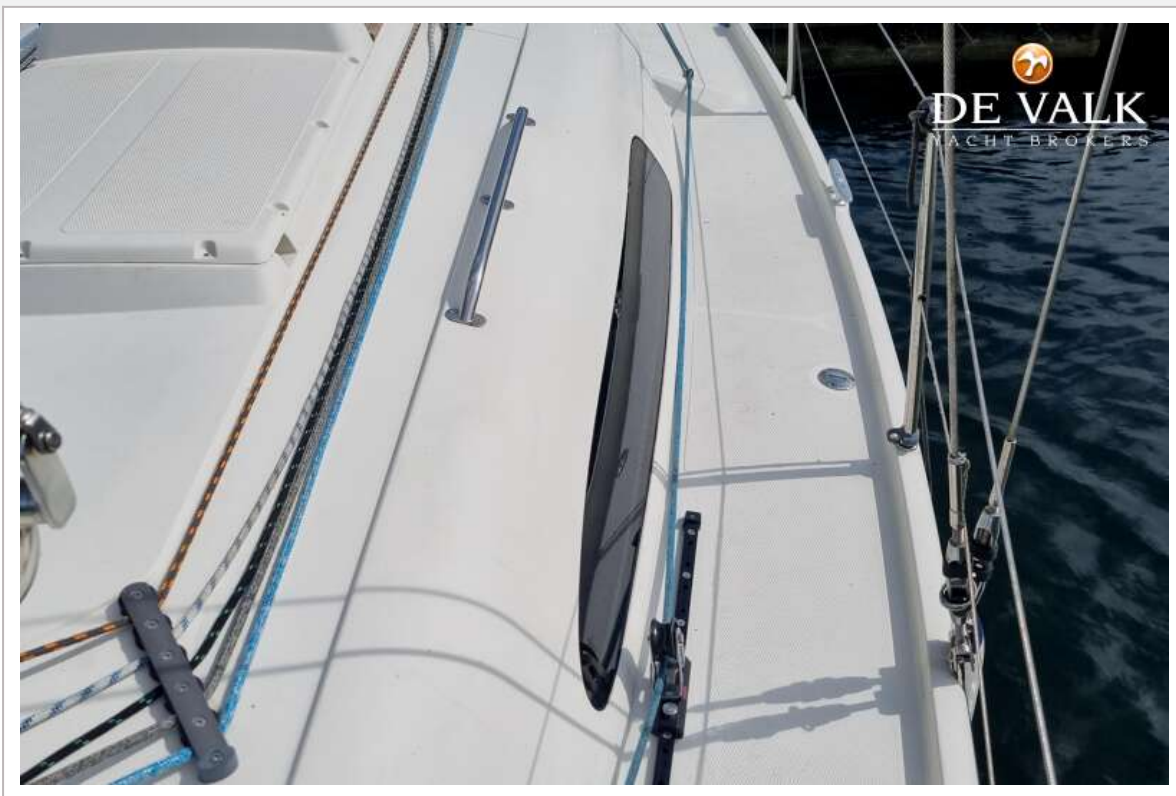


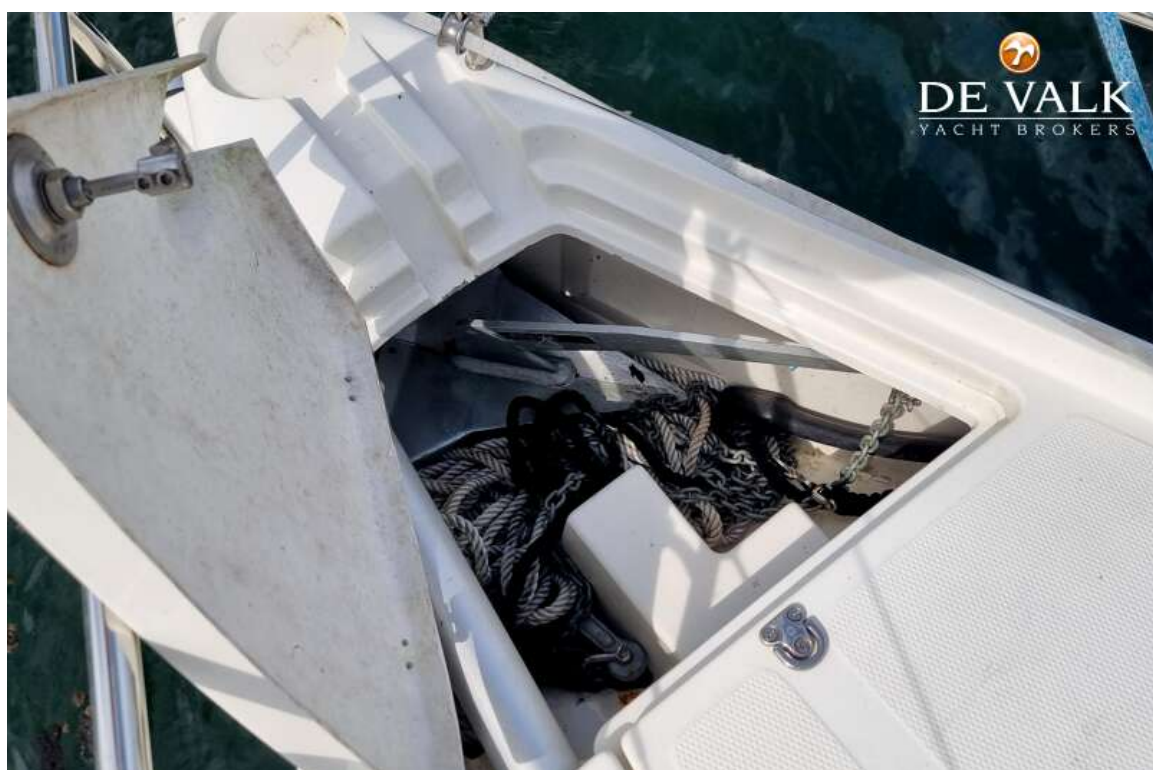


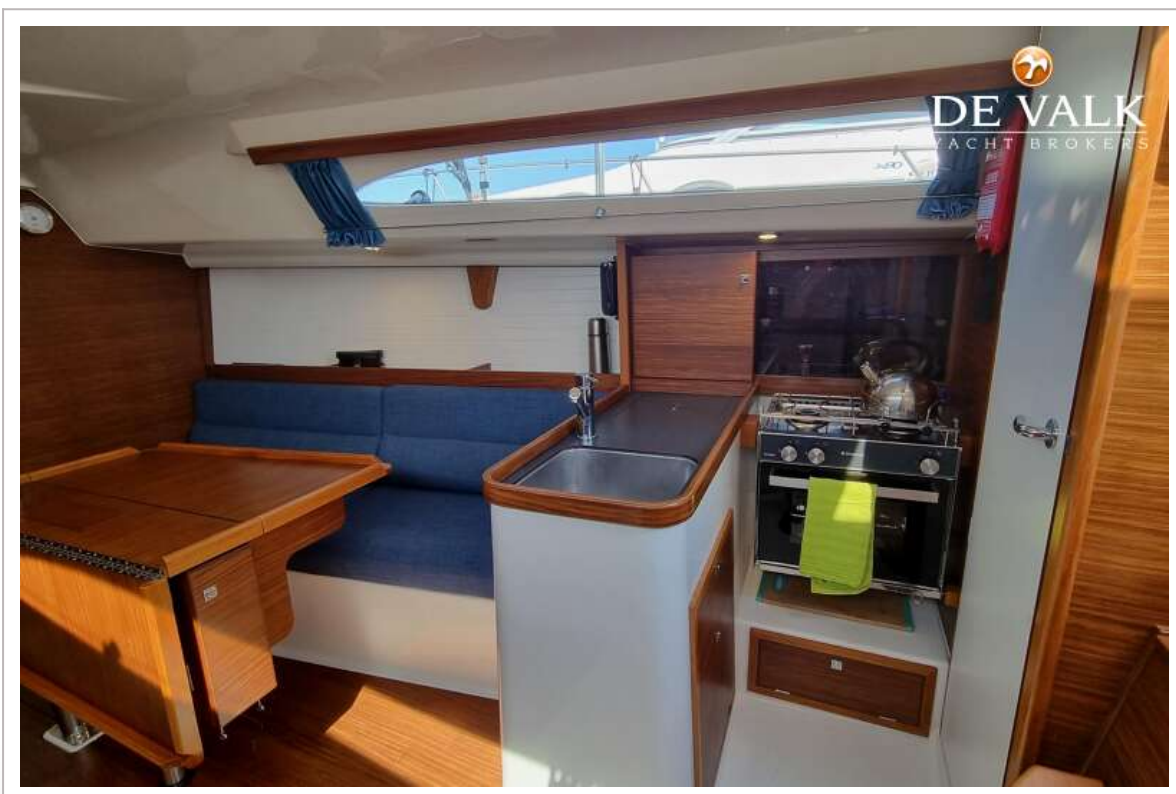


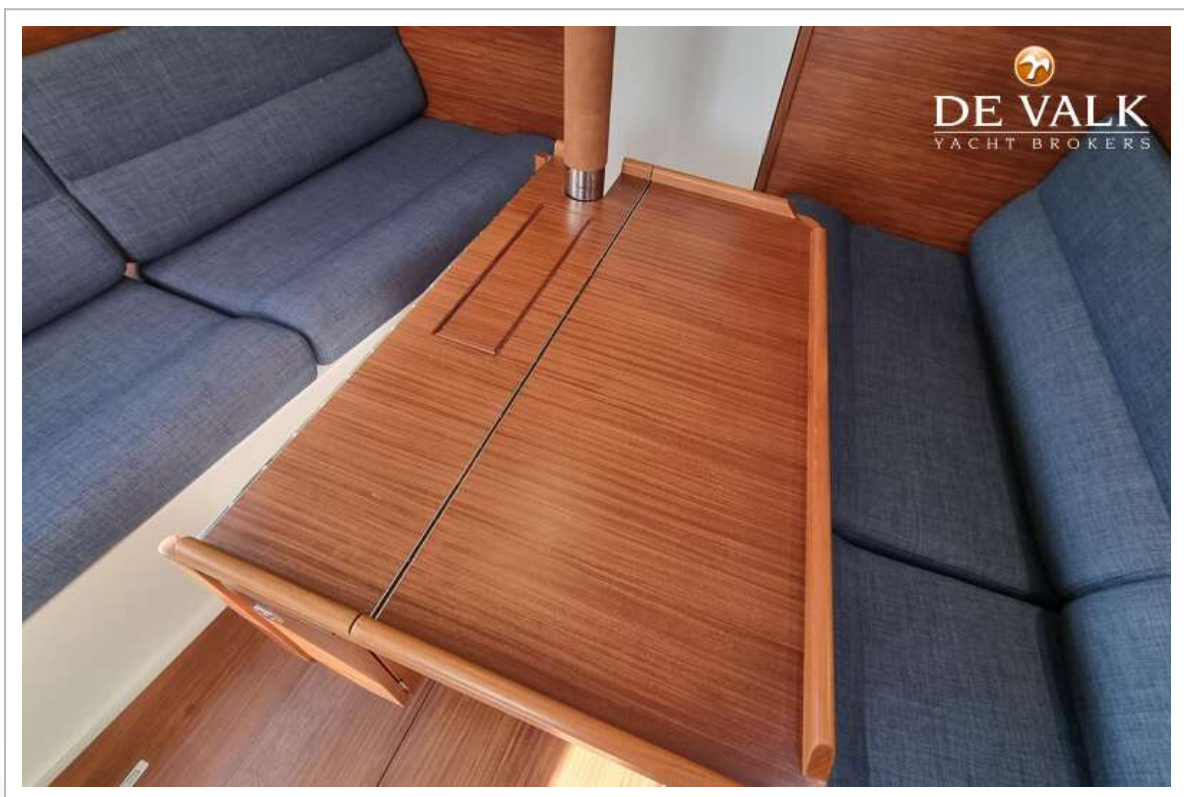
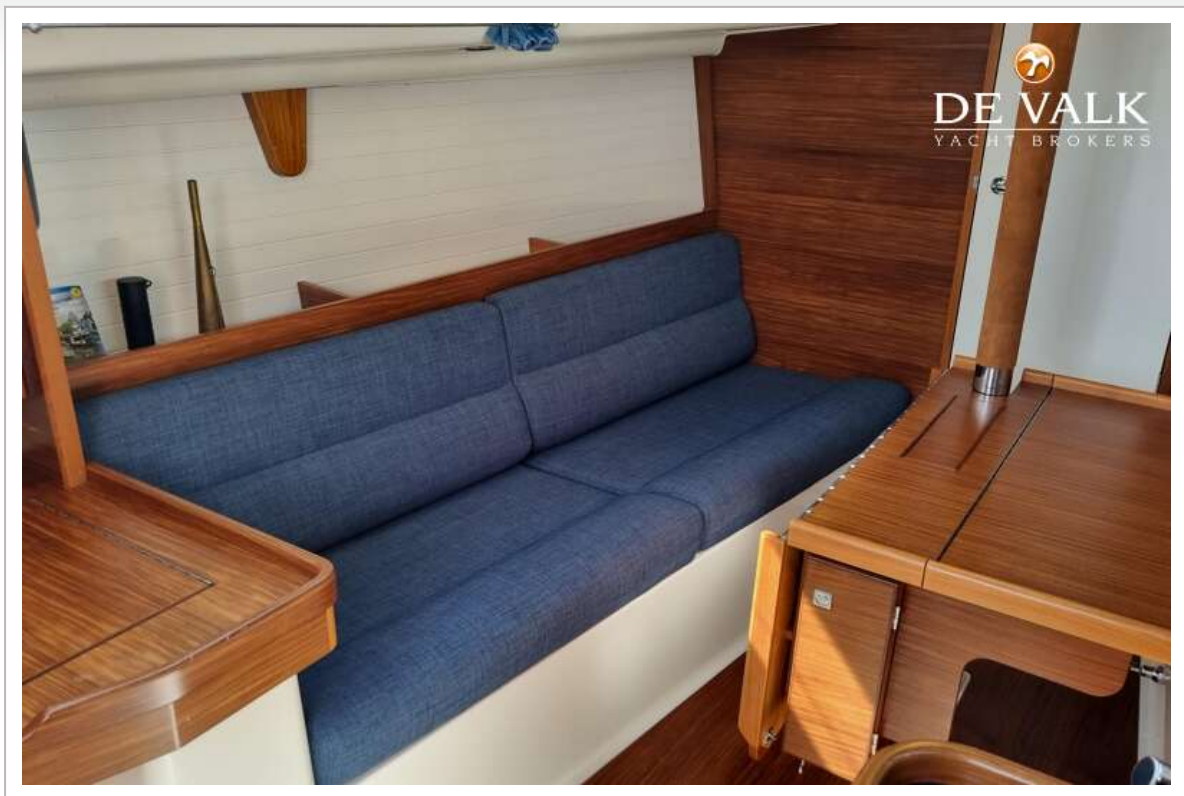






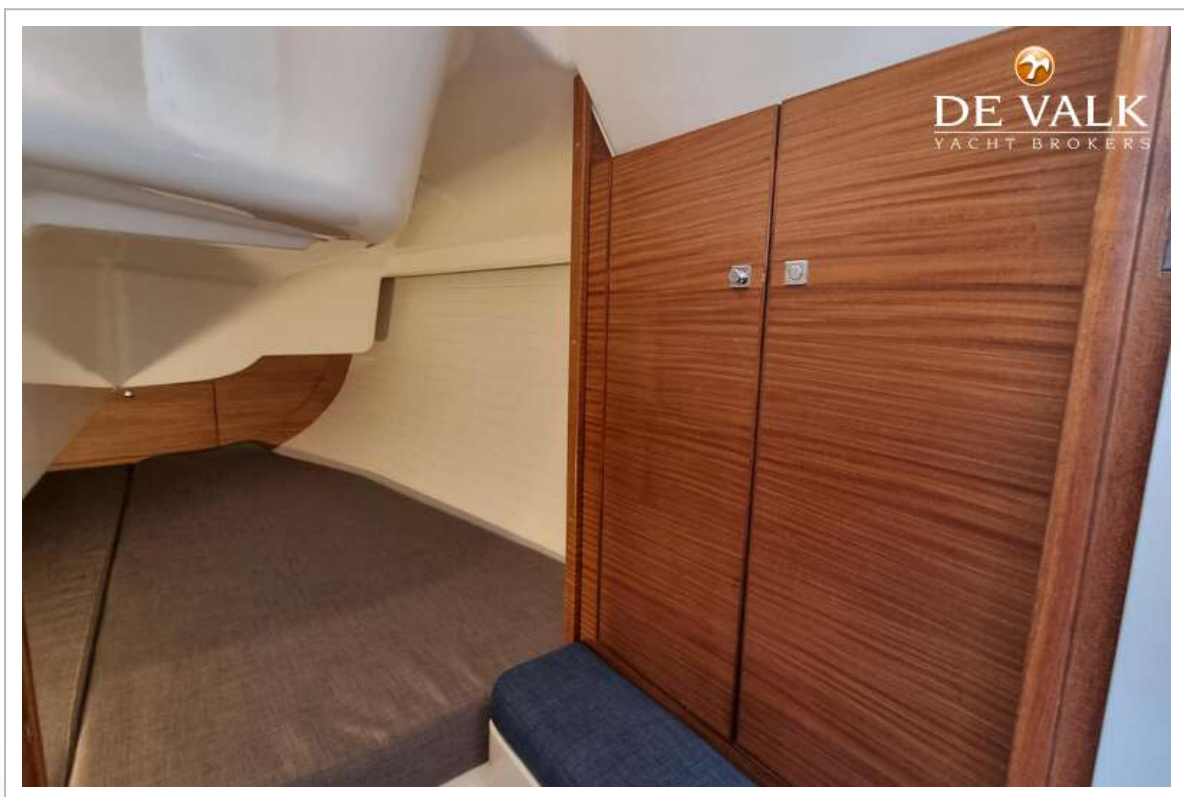
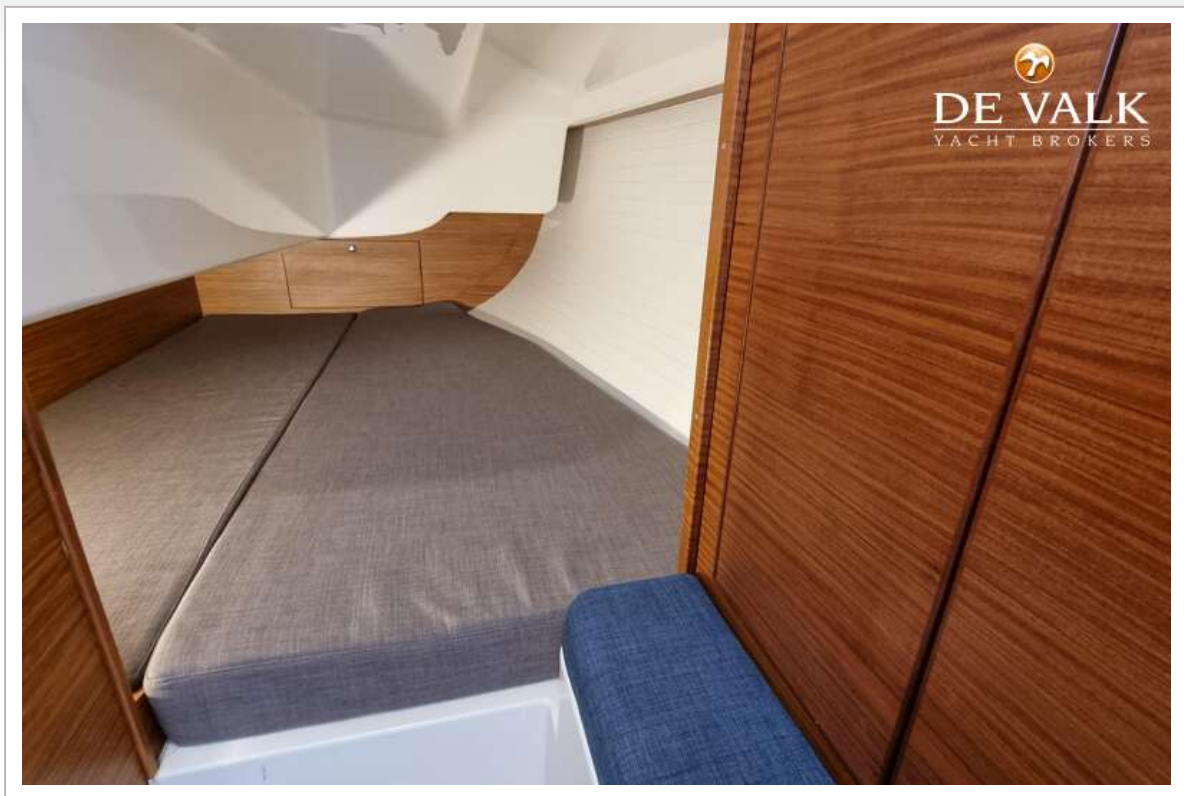


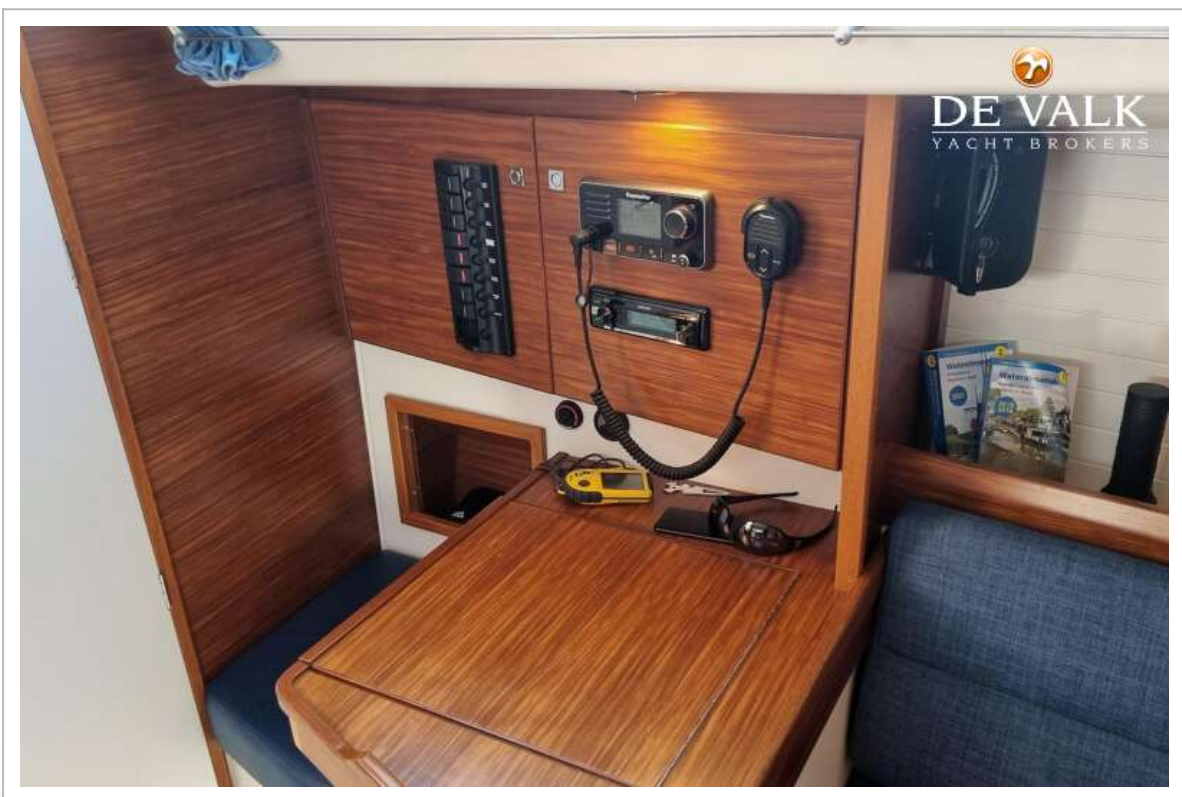




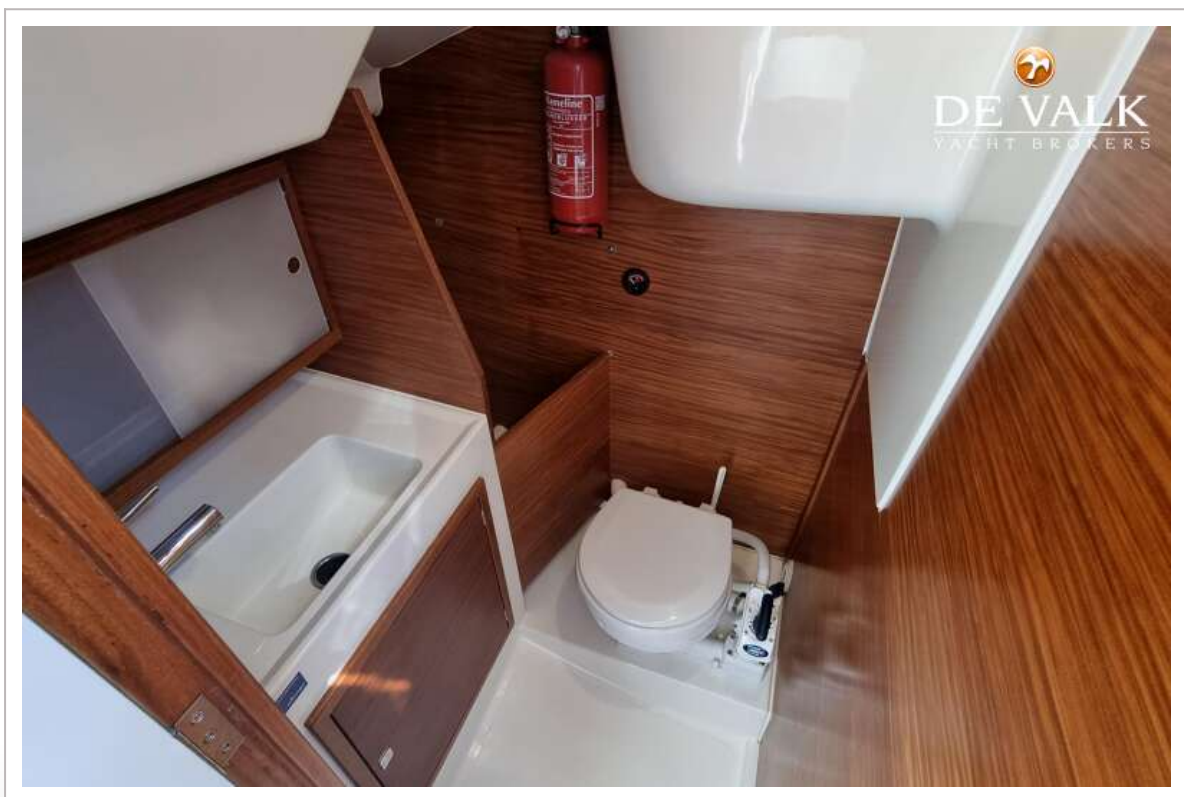
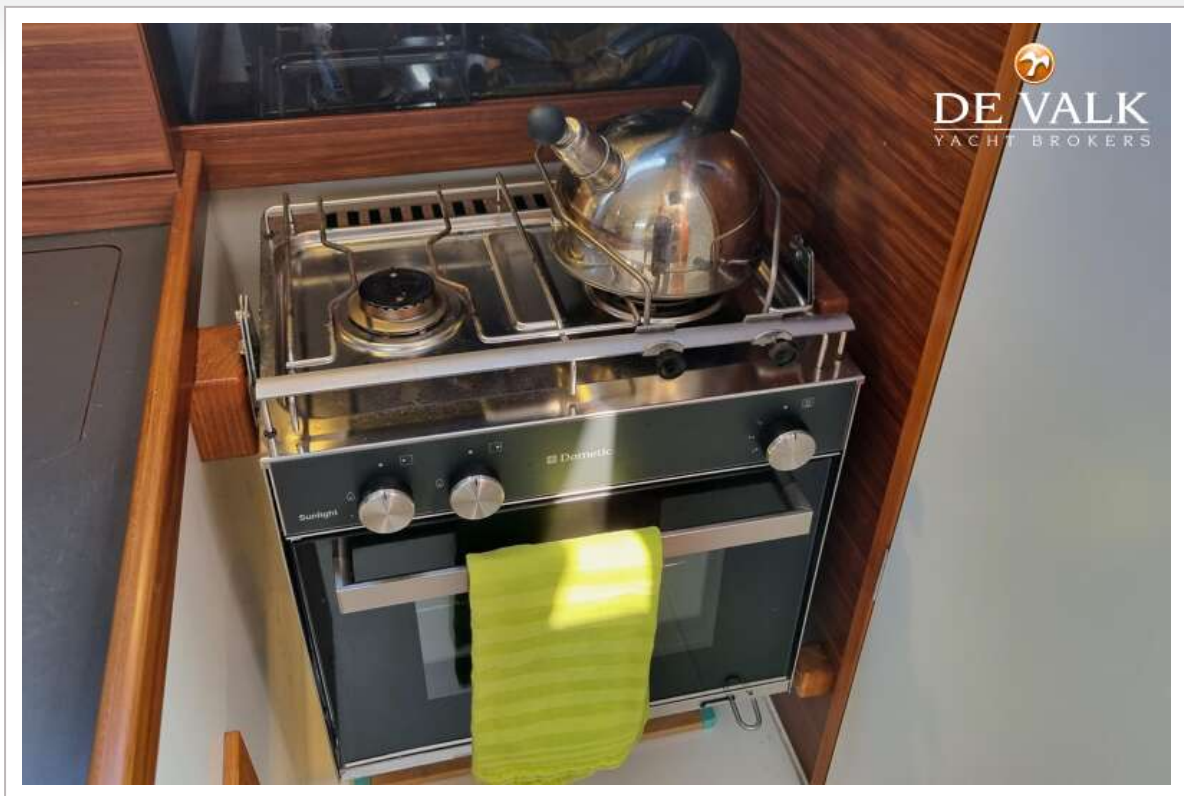


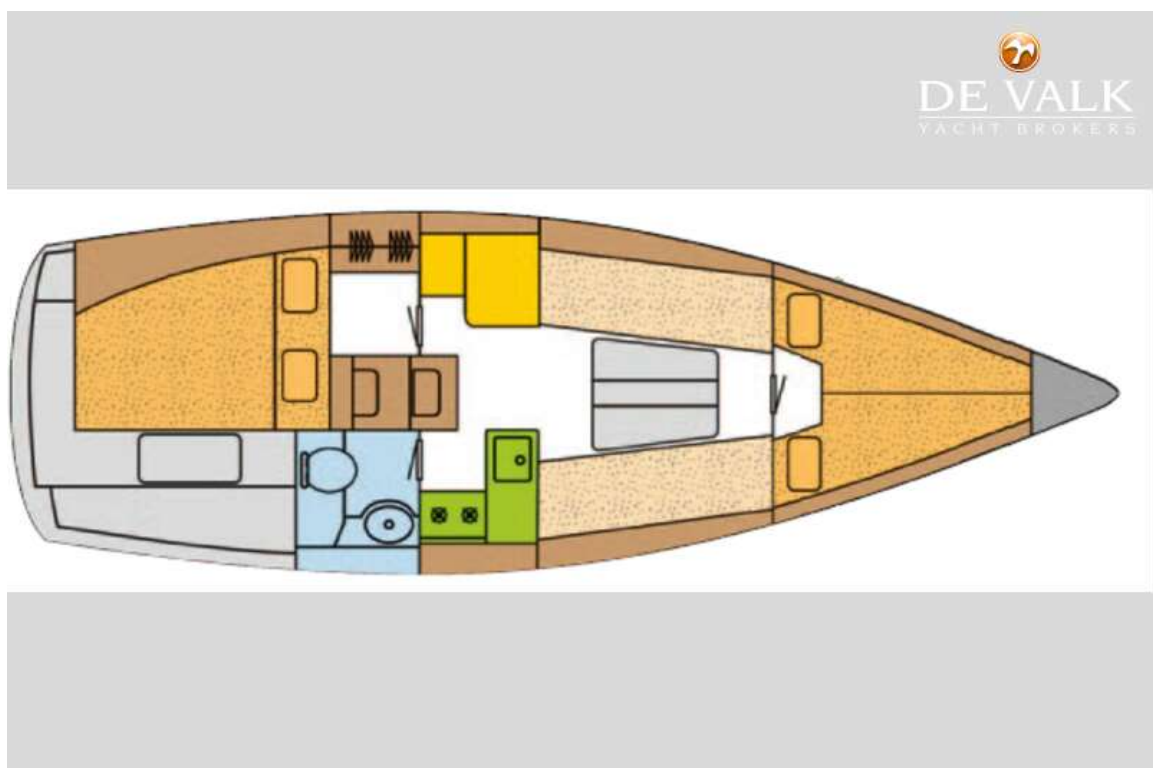


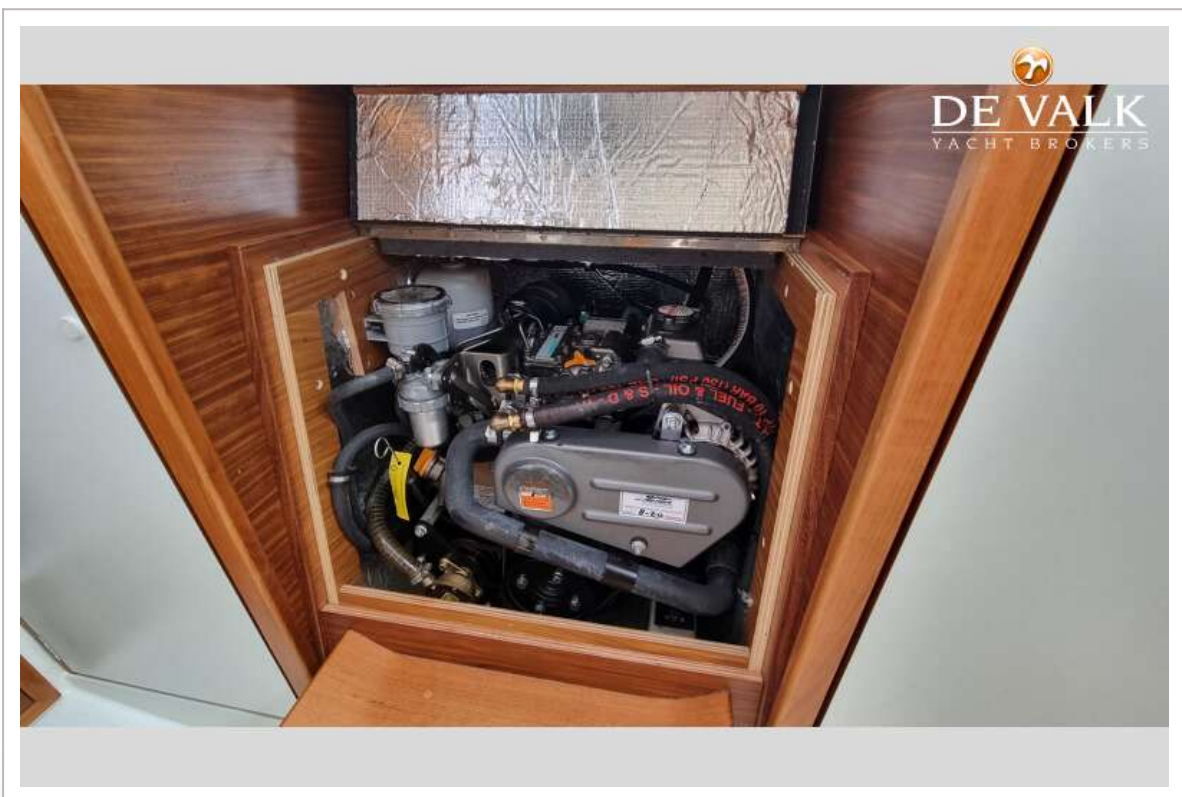


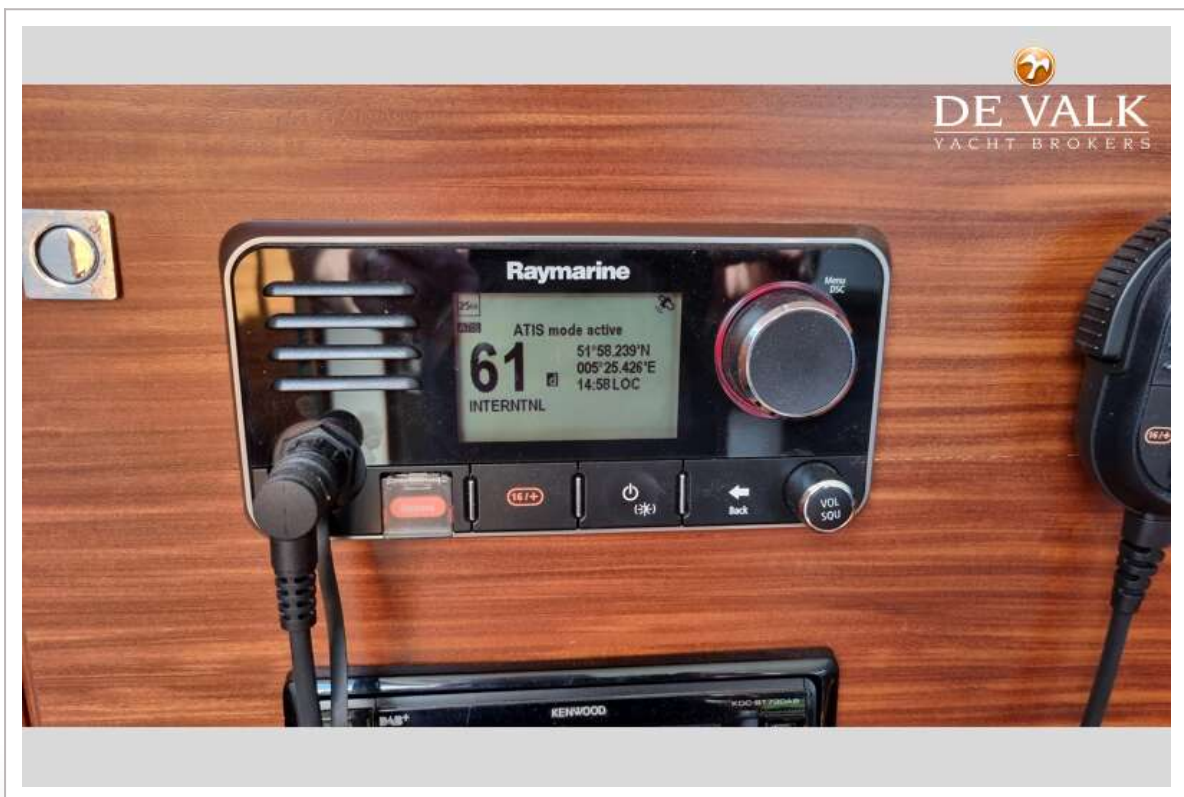
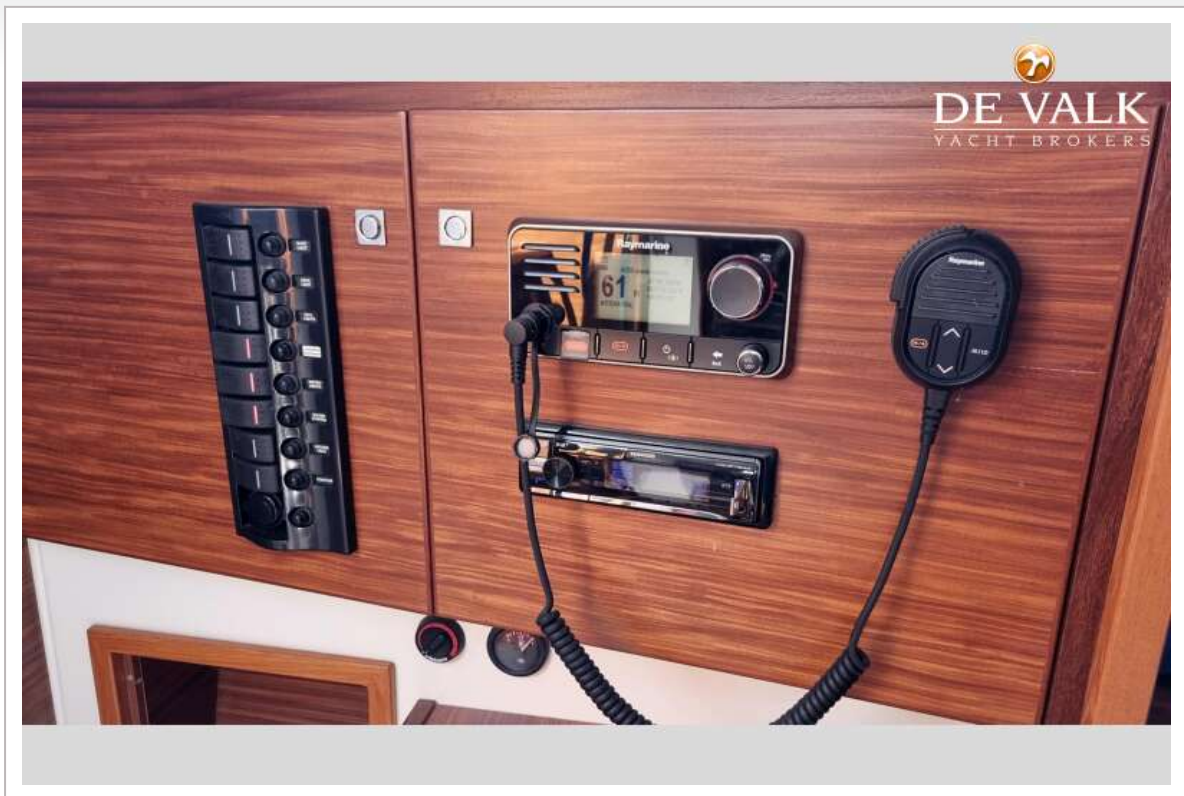












WINNER 9

