



## AQUALINE 35 AK

# AQUALINE 35 AK

## BROKER'S COMMENTS

Typical "Dutch School" Aqualine 35 AK with a surprisingly spacious layout. The clever division of the cabins and the bathroom (with separate shower) creates a lot of extra space in the salon in this popular 10 meter class. In the front you will find a central placed double bed and aft a very spacious cabin with a double and a single bed. In the salon, the sofa is at a height so that you can enjoy the surroundings without obstruction. With 75hp diesel (11/2015) you can also discover lots of other areas. The headway can be shrunk to a low 2,30 meters.

*Marc Weijenberg*

## SPECIFICATIONS

<b>Dimensions</b>	10.40 x 3.45 x 0.95 (m)	<b>Builder</b>	Aqualine Heereveen
<b>Built</b>	2014	<b>Cabins</b>	2
<b>Material</b>	Steel	<b>Berths</b>	
<b>Engine(s)</b>	1 x Yanmar 4JH4TE diesel	<b>Hp/Kw</b>	75.00 (hp), 55.13 (kw)
<b>Asking price</b>	sold (VAT )	<b>Lying</b>	elsewhere / Not at sales office

## CONTACT

<b>Sales office</b>	De Valk Thuishaven	<b>Telephone</b>	+31 35 5829042
<b>Address</b>	Peperstraat 7 1411 PX Naarden NL	<b>E-mail</b>	thuishaven@devalk.nl

## DISCLAIMER

These particulars are given in good faith as supplied but cannot be guaranteed.



# AQUALINE 35 AK

## GENERAL

Model	AQUALINE 35 AK
Type	motor yacht
LOA (m)	10,40
Beam (m)	3,45
Draft (m)	0,95
Air draft (m)	2,30
Headroom (m)	1,94
Year built	2014
Builder	Aqualine Heereveen
Country	The Netherlands
Designer	Marvis Nederland
Displacement (t)	12,5
CE norm	C
Hull material	steel
Hull colour	white
Hull shape	hard chine
Keel type	
Superstructure material	steel
Rubbing strake	stainless steel
Deck material	steel
Deck finish	non-skid paint
Cockpit deck finish	non-skid paint
Antifouling (year)	2022
Window frame	aluminium
Deckhatch	yes
Portholes	aluminium Rhego
Insulation	foam plates 40 mm
Fuel tank (litre)	steel 300
Freshwater tank (litre)	stainless steel 500
Blackwater tank (litre)	polyethylene 42



Blackwater tank extraction	deck extraction
Wheel steering	hydraulic
Emergency tiller	yes

## ACCOMMODATION

Cabins	2
Interior	
Floor	anti-slip
Aft deck	yes
Saloon	with semi-round settee
Headroom saloon (m)	till 1,94
Heating	central heating Maritime Booster
Aft Cabin	yes
Opening door to aft deck	yes
Galley	yes
Countertop	plastic
Sink	stainless steel
Cooker	Etna 4 burner
Microwave	220v
Fridge	with freezer compartment Isotherm
Hot water system	on central heating
Water pressure system	electrical
Owners cabin	double bed
Bed length (m)	2,00 x 1,50
Wardrobe	hanging and shelves
Bathroom	shared I
Toilet	shared Vetus
Toilet system	electric
Wash basin	in the bathroom
Shower	separate
Extra info	headroom cabins bathroom up to 1,90



# AQUALINE 35 AK

Guest cabin 1	double bed + single bed
Bed length (m)	2,10 x 1,30 / 2,10 x 0,90
Wardrobe	drawers and shelves
Extra info	both cabins have their own extra washbasin
Extra info	outside view from settee

## MACHINERY

No of engines	1
Make	Yanmar
Type	4JH4TE
HP	75
kW	55,13
Fuel	diesel
Year installed	2015
Maximum speed (kn)	8
Cruising speed (kn)	6
Consumption (l/hr)	3
Engine hours	750
Engine cooling system	freshwater heat exchanger
Drive	shaft
Engine controls	bowden cable
Gearbox	mechanical ZF
Bowthruster	electric
Exhaust	watercooled
Propeller type	fixed
Propeller blades	3
Propeller shaft material	stainless steel
Shaft lubrication	grease
Electric bilge pump	yes
Electrical installation	12v/220v
Start battery	1 x 70ah



Service battery	3 x 180ah (AGM 2021)
Battery monitor	Victron
Battery charger/inverter	Victron Multiplus 12v/1600watt/70amp
Shorepower	with cable
Extra info	engine installed 11/2015

## NAVIGATION

Depth sounder	yes
Rudder angle indicator	yes
Navigation lights	yes

## EQUIPMENT

Fixed windscreen	(can be folded down)
Sprayhood	yes
Cockpit cover	yes
Bimini	(2021)
Bathing platform	yes
Boarding ladder	stainless steel
Anchor	Pool
Anchor chain	yes
Windlass	manual Lofrance
Sea railing	stainless steel
Grab rail (superstructure)	stainless steel
Railing side opening gates	2 x
Pushpit	yes
Pulpit	yes
Lifebuoy	1 x
Wiper	1 x
Horn	electric
Fenders	yes
Mooring lines	yes





# AQUALINE 35 AK





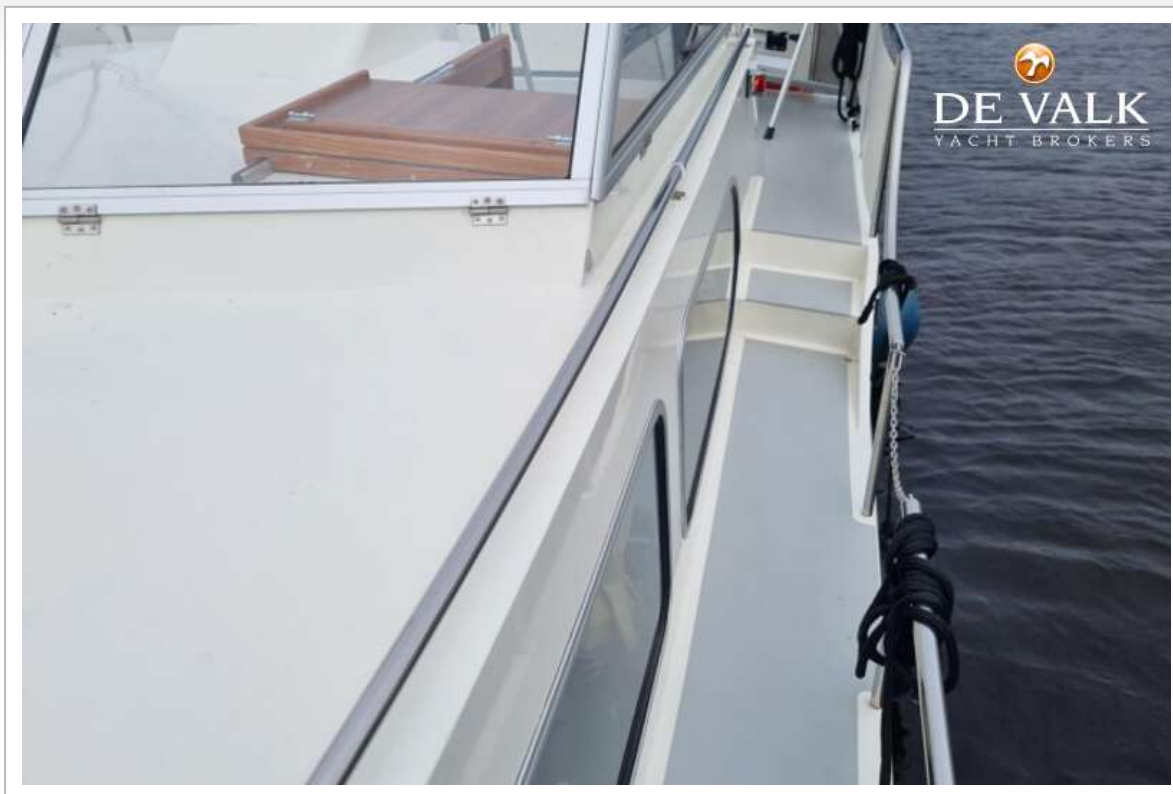
# AQUALINE 35 AK



# AQUALINE 35 AK

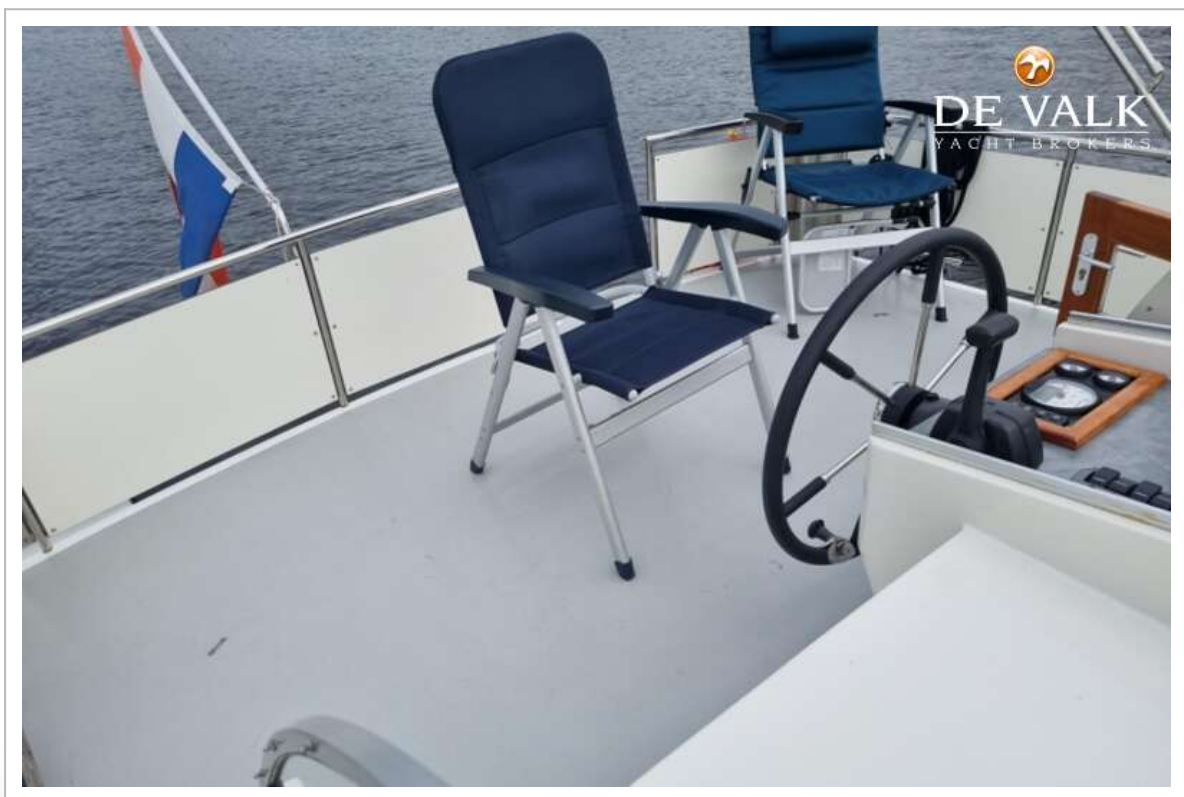


# AQUALINE 35 AK





# AQUALINE 35 AK



# AQUALINE 35 AK



# AQUALINE 35 AK





# AQUALINE 35 AK

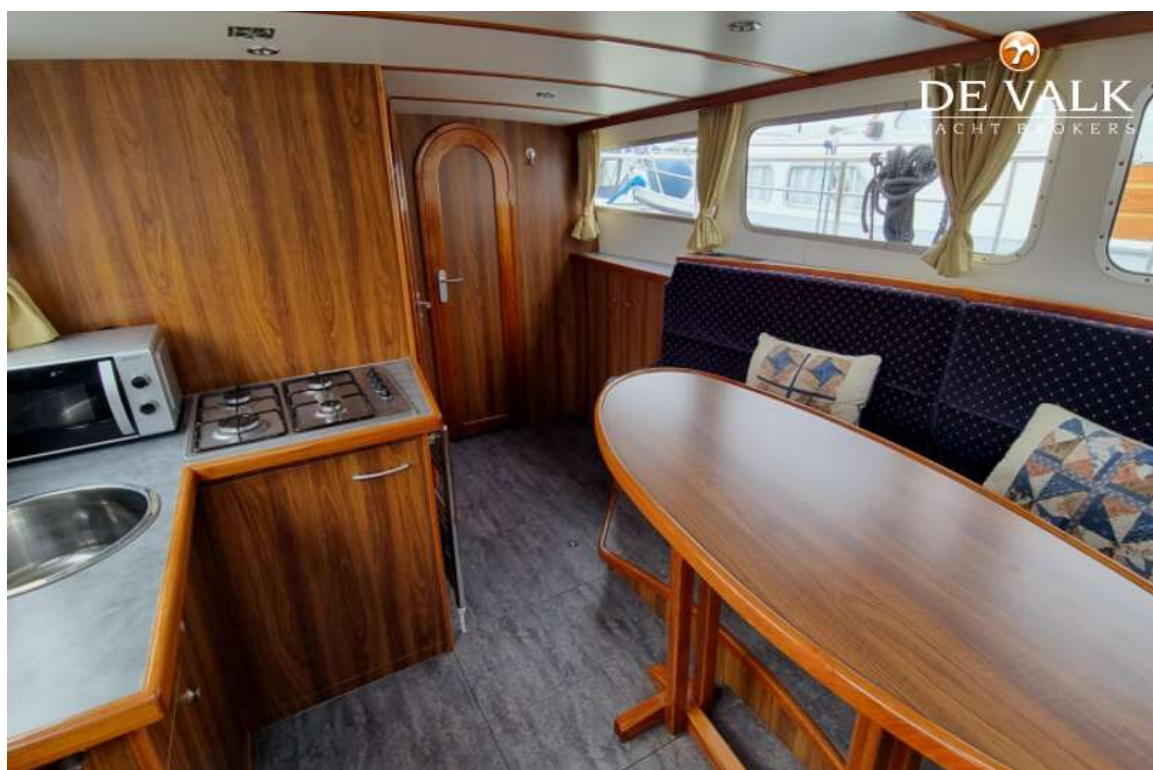


# AQUALINE 35 AK

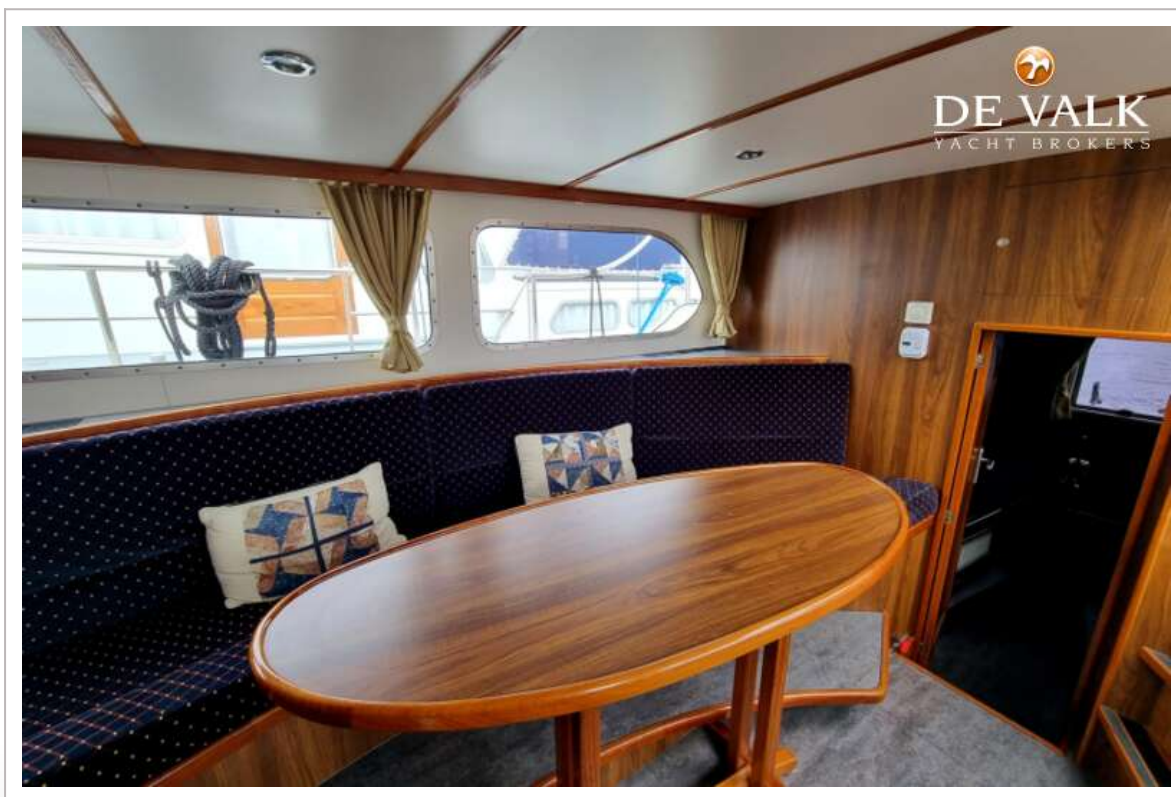




# AQUALINE 35 AK

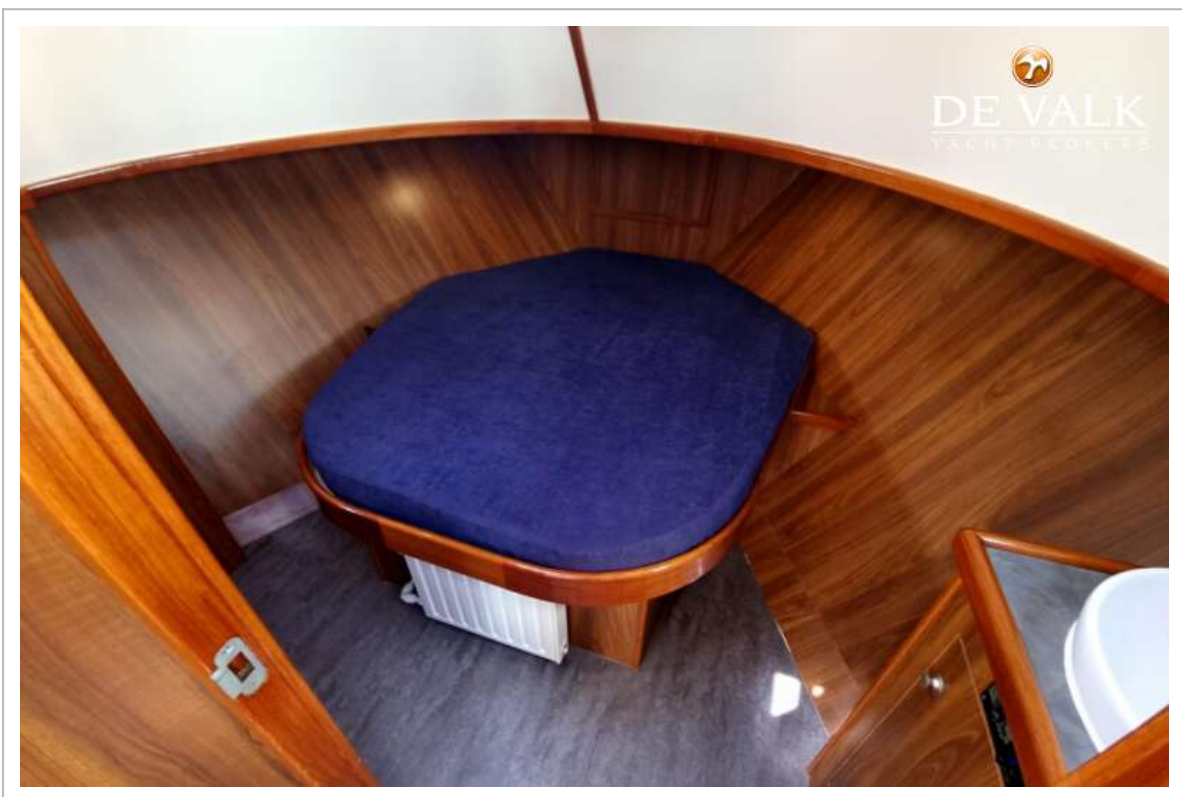


# AQUALINE 35 AK

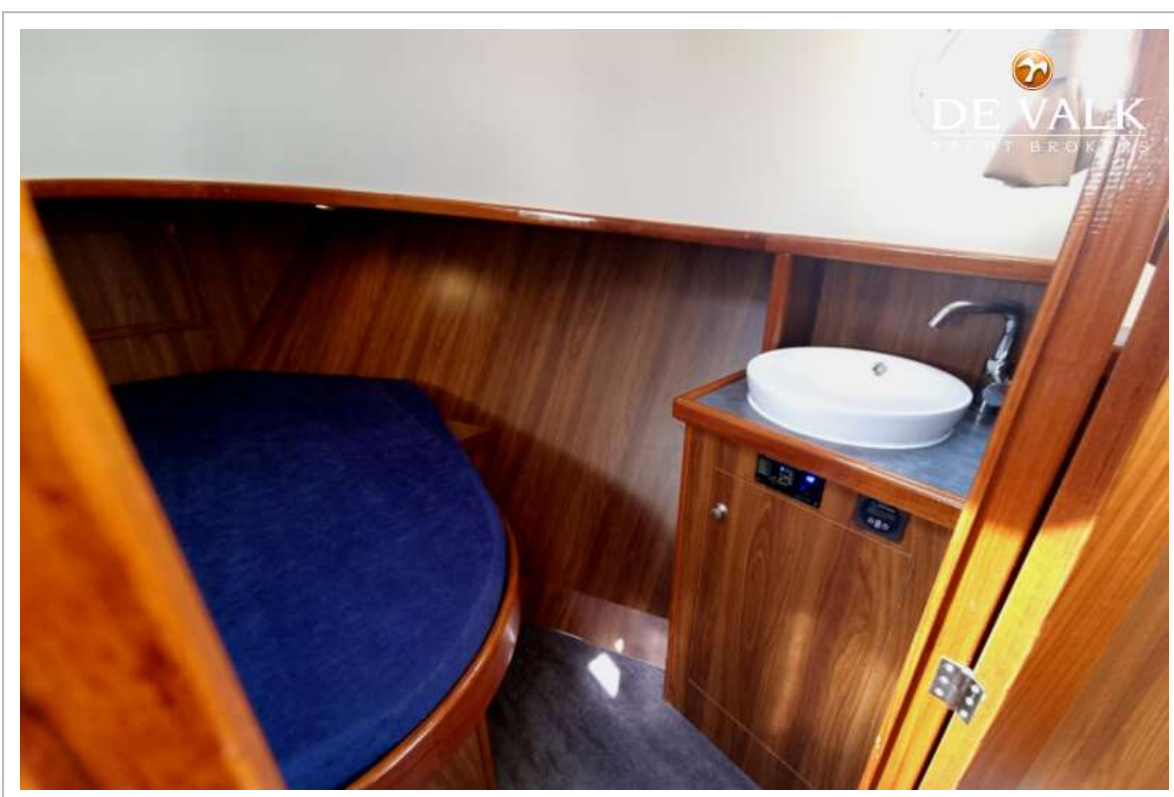




# AQUALINE 35 AK

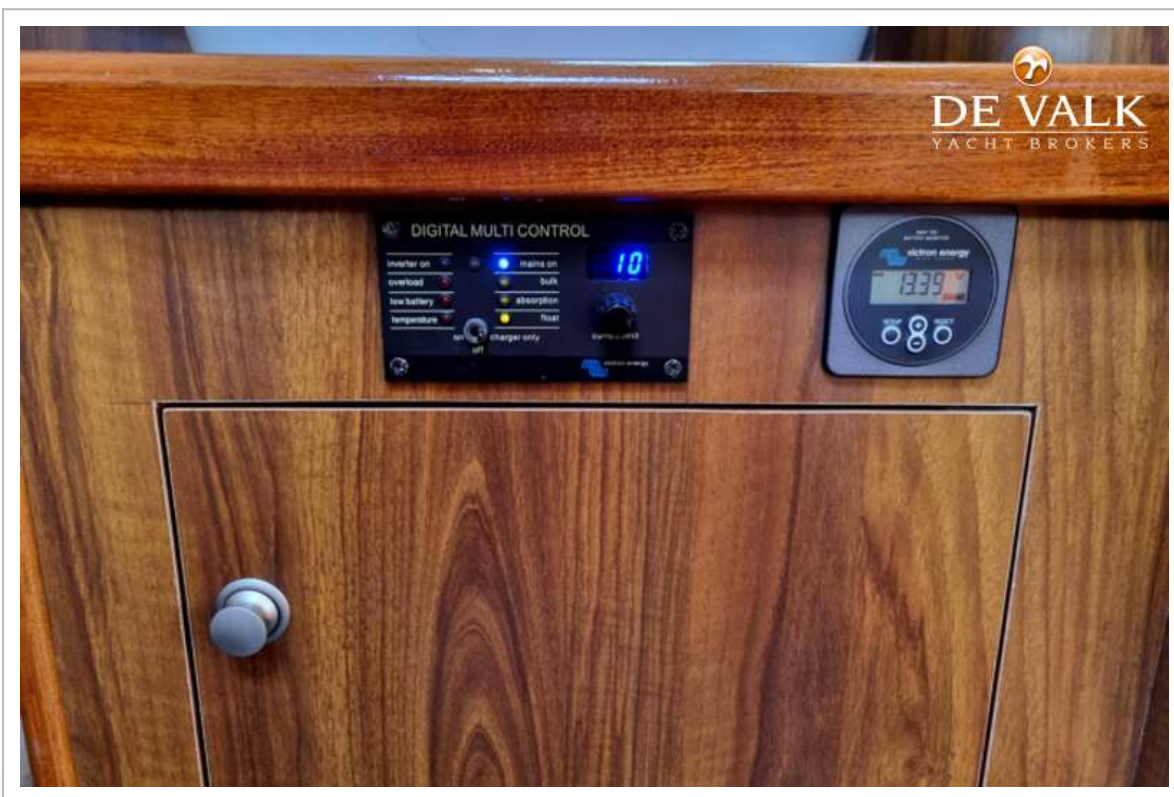
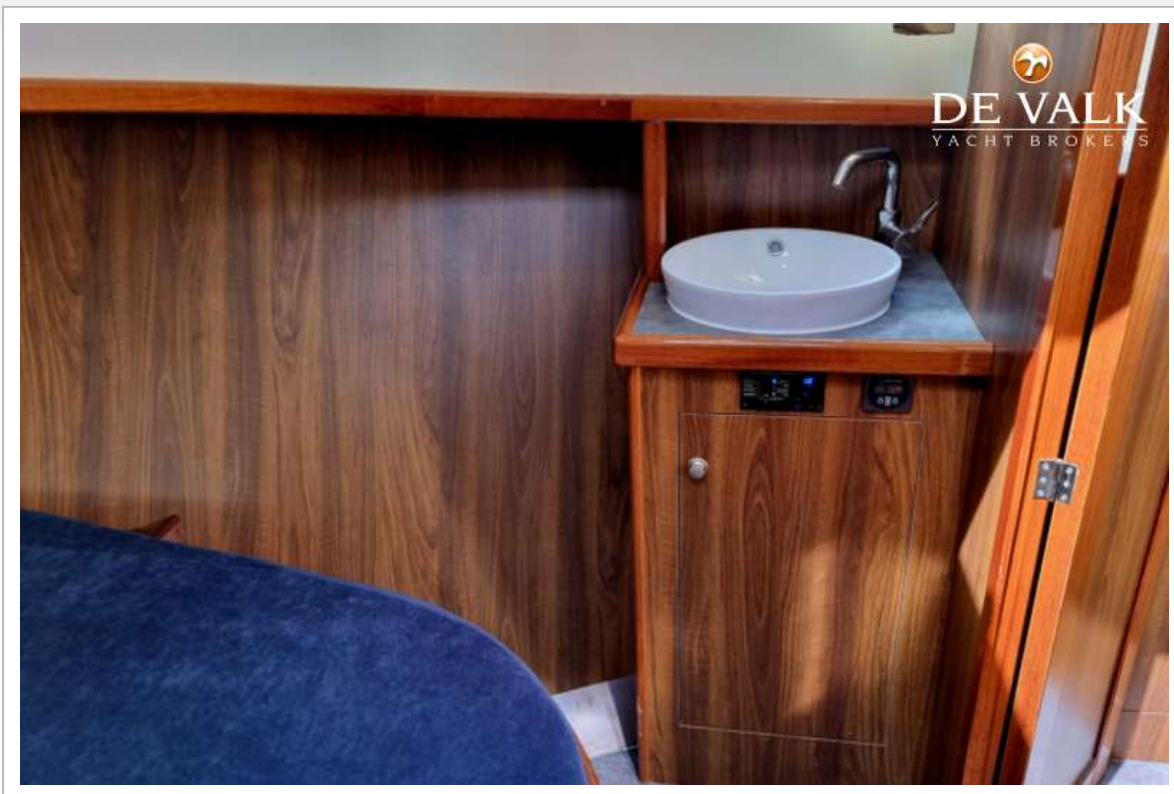


# AQUALINE 35 AK





# AQUALINE 35 AK

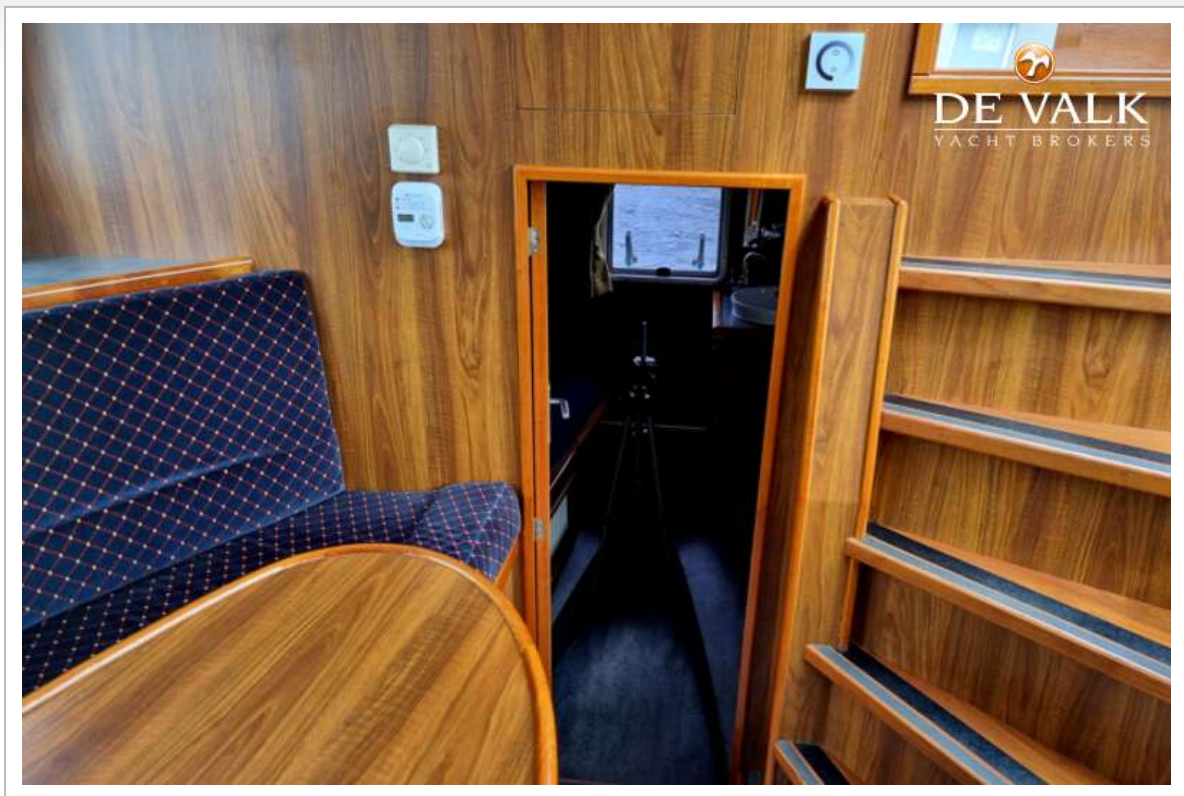


# AQUALINE 35 AK

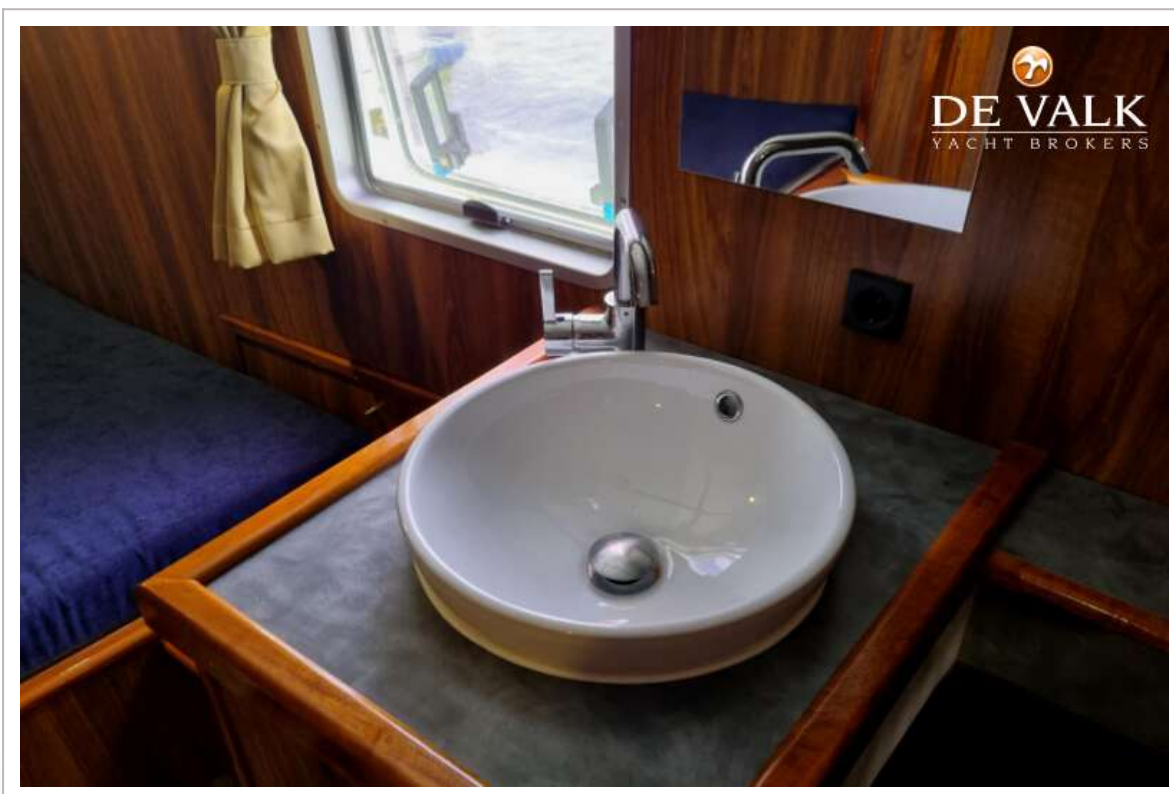




# AQUALINE 35 AK

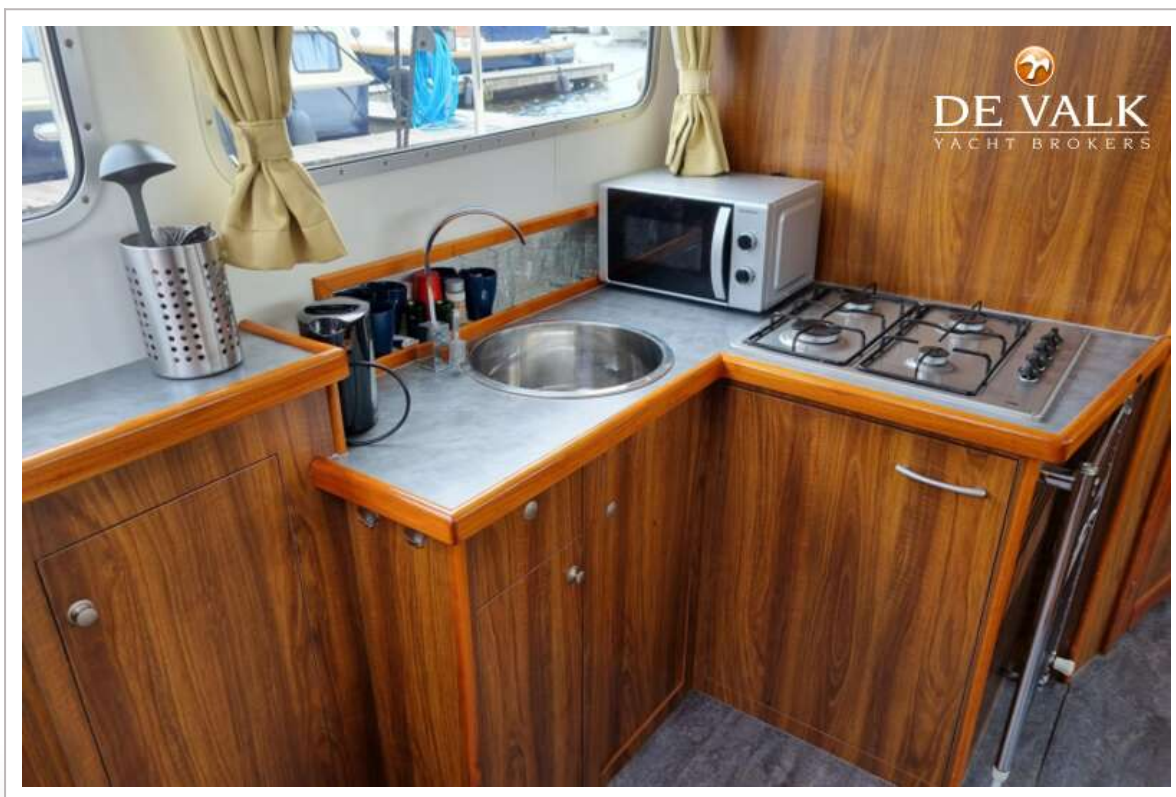


# AQUALINE 35 AK

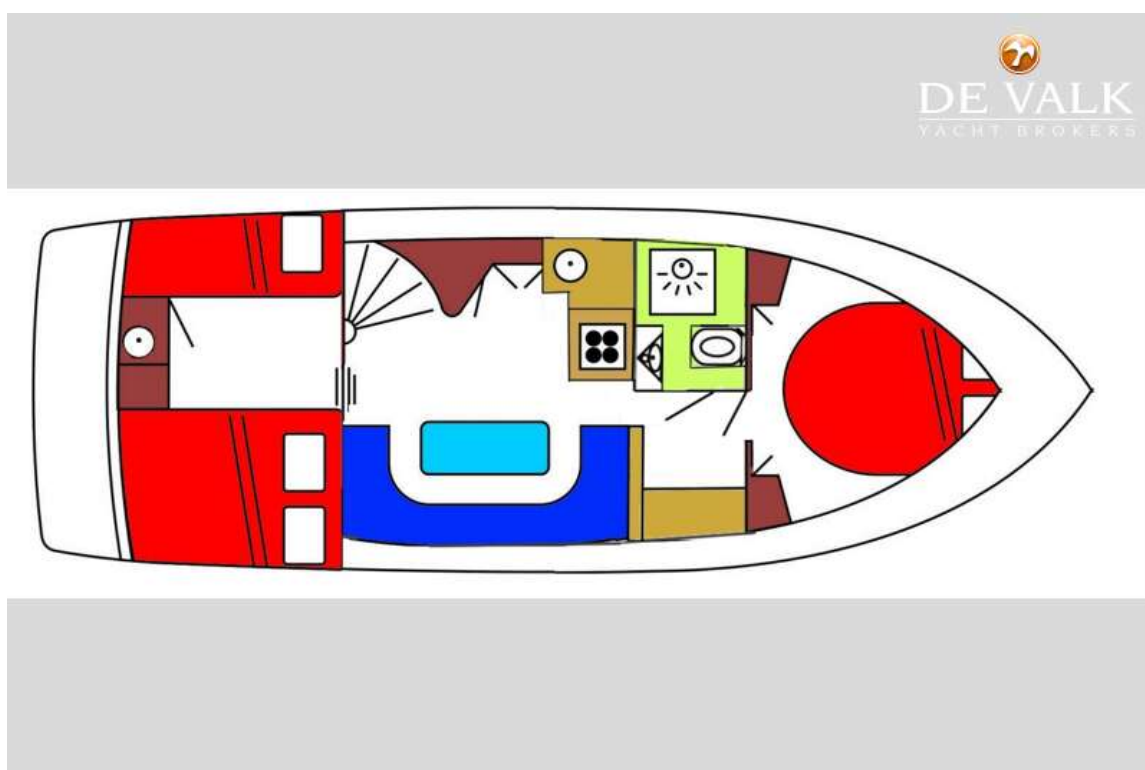
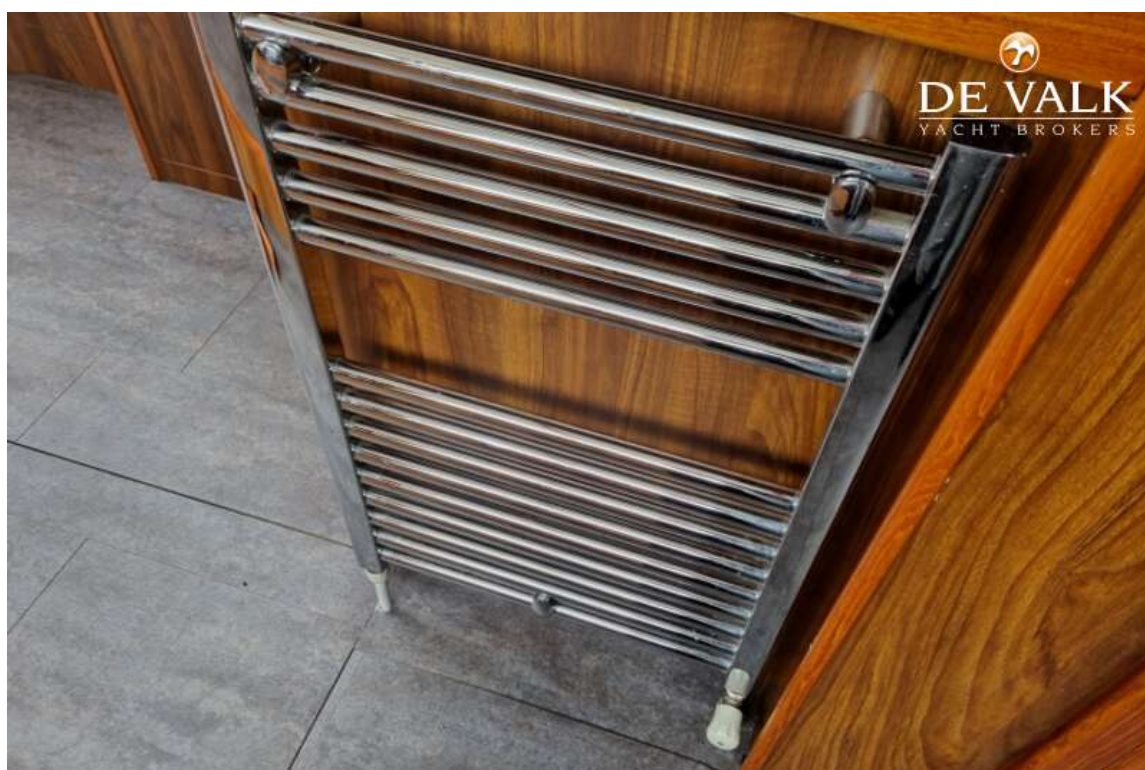




# AQUALINE 35 AK



# AQUALINE 35 AK





# AQUALINE 35 AK



# AQUALINE 35 AK





# AQUALINE 35 AK

