



DE VALK
YACHT BROKERS



CLASSIC KOK CANOE STERN 16.50 'UIVER'



DE VALK
YACHT BROKERS

CLASSIC KOK CANOE STERN 16.50 'UIVER'

BROKER'S COMMENTS

The classic motor yacht UIVER, was built in 1957/8 by the KOK shipyard in Vinkeveen, to a design by celebrated ship's architect Henk Tingen. Whilst retaining her original character, UIVER was comprehensively renovated in 2012-15, both structurally and mechanically, with all electrical and hydraulic systems modernised and replaced. Since 2012 she has spent every winter in conditioned storage inside, and has maintained a very good state of repair and decoration throughout. This beautiful classic can be viewed by appointment. Contact us soon!

Sjoerd Paddenburg

SPECIFICATIONS

Dimensions	16.50 x 4.24 x 1.60 (m)	Builder	Kok shipyard Vinkeveen
Built	1958	Cabins	2
Material	Steel	Berths	6
Engine(s)	1 x Deutz SA 6M 517 diesel	Hp/Kw	116.00 (hp), 85.26 (kw)
Asking price	€ 230.000 (VAT Exempt)	Lying	at sales office

CONTACT

Sales office	De Valk Loosdrecht B.V.	Telephone	+31 (0)35 582 90 30
Address	't Breukeleveense Meentje 6 1231LM Loosdrecht / Wijdmeren NL	E-mail	loosdrecht@devalk.nl

DISCLAIMER

These particulars are given in good faith as supplied but cannot be guaranteed.



CLASSIC KOK CANOE STERN 16.50 'UIVER'

GENERAL

Model	CLASSIC KOK CANOE STERN 16.50 'UIVER'
Type	motor yacht
LOA (m)	16,50
Beam (m)	4,24
Draft (m)	1,60
Air draft min (m)	3,20
Headroom (m)	1,95
Year built	1958
Builder	Kok shipyard Vinkeveen
Country	The Netherlands
Designer	Henk Tingen
Displacement (t)	28
CE norm	NA
Hull material	steel
Hull colour	white
Hull shape	S-bilged
Superstructure material	teak
Rubbing strake	stainless steel
Deck material	wood
Deck finish	teak Recaulked 2015
Superstructure deck finish	teak Recaulked 2015
Cockpit deck finish	teak
Antifouling (year)	2023
Window frame	copper chromed
Window material	glass
Portholes	steel
Mast can be lowered	manual
Fuel tank (litre)	steel 2x 1500
Level indicator (fuel tank)	yes
Freshwater tank (litre)	steel 1500 (refurbished and repainted inside 2014)



CLASSIC KOK CANOE STERN 16.50 'UIVER'

Level indicator (freshwater)	yes
Blackwater tank (litre)	GRP 137
Blackwater tank extraction	deck extraction + pump
Wheel steering	hydraulic
Inside helm position	yes
More info on hull	Derusted, treated and repainted
Extra info	Hull has been replated in local areas (report available)

ACCOMMODATION

Cabins	2
Berths	6
Interior	teak With blue upholstery
Layout	1 cabin in front with 4 berths and 1 aft cabin with double bed
Floor	teak
Aft deck	yes
Saloon	yes
Headroom saloon (m)	1,97
Heating	central heating Kabola
Air-conditioning	reverse cycle airco In owners cabin
Aft Cabin	yes
Dinette	yes
Sliding door to aft deck	to the side decks
Opening door to aft deck	yes
Galley	yes
Countertop	wood
Sink	stainless steel
Cooker	calor gas 5 burners
Oven	ATAG
Extractor	yes
Gas alarm	yes
Fridge	2 x



CLASSIC KOK CANOE STERN 16.50 'UIVER'

Freezer	Refrigerator that can be used as a freezer
Hot water system	on central heating
Water pressure system	electrical Hydrofoor
Owners cabin	double bed With fitted upholstery, dressing table and cupboard
Bed length (m)	2,10 x 1,70 (headroom 1,93)
Wardrobe	hanging and shelves
Bathroom	separate
Toilet	separate
Toilet system	electric
Wash basin	in the bathroom
Shower	separate
Guest cabin 1	v-bed
Bed length (m)	2,00 x 1,80
Extra info	2 extra bunks above the v-bed, 2,00 x 0,65 mtr
Washing machine/dryer combi	In workshop/storage
Extra info	Back interior has been remodelled and rebuilt in 2012/2014
Extra info	Fine detailed teak interior and teak wooden flooring.

MACHINERY

No of engines	1
Make	Deutz
Type	SA 6M 517
HP	116
kW	85.26
Fuel	diesel
Year installed	1958
Maximum speed (kn)	8
Cruising speed (kn)	6
Engine cooling system	freshwater heat exchanger
Drive	shaft
Engine controls	bowden cable



CLASSIC KOK CANOE STERN 16.50 'UIVER'

Gearbox	hydraulic
Bowthruster	hydraulic
Sternthruster	hydraulic
Propeller type	fixed
Propeller blades	4
Shaft lubrication	grease Automatic
Electric bilge pump	2
Electrical installation	24V / 220V
Generator	Fisher Panda 5 kVA (2018)
Start battery	2 x (2023)
Service battery	4 x Mastervolt (2020)
Battery monitor	yes
Battery charger	Victron Blue Charter 12v/7amp
Battery charger/inverter	Victron Quattro 24v/3000watt/70amp
Shorepower	with cable
Insulation transformer	Victron
Extra info	Fuel consumption is 6 - 10 liters per hour

NAVIGATION

Depth sounder/log	On Garmin GPSmap 721
VHF	Garmin GHS 10i
Autopilot	Garmin
Rudder angle indicator	yes
Plotter/GPS	Garmin GPSmap 721
AIS transponder	yes
Navigation lights	yes

EQUIPMENT

Sprayhood	Full over upperdeck aft (2017)
Cockpit table	yes
Cockpit chairs	yes



CLASSIC KOK CANOE STERN 16.50 'UIVER'

Boarding ladder	yes
Anchor	Pool
Anchor chain	yes
Anchor 2	Reserve
Windlass	electrical
Sea railing	steel With teak cap rail and teak cap to gunwhale (2014)
Railing side opening gates	yes
Wiper	Exalto
Horn	yes
Fenders	yes
Mooring lines	yes
Extra info	Covers for deckhatches, helmposition, cockpit table etc.



CLASSIC KOK CANOE STERN 16.50 'UIVER'



CLASSIC KOK CANOE STERN 16.50 'UIVER'



CLASSIC KOK CANOE STERN 16.50 'UIVER'



CLASSIC KOK CANOE STERN 16.50 'UIVER'



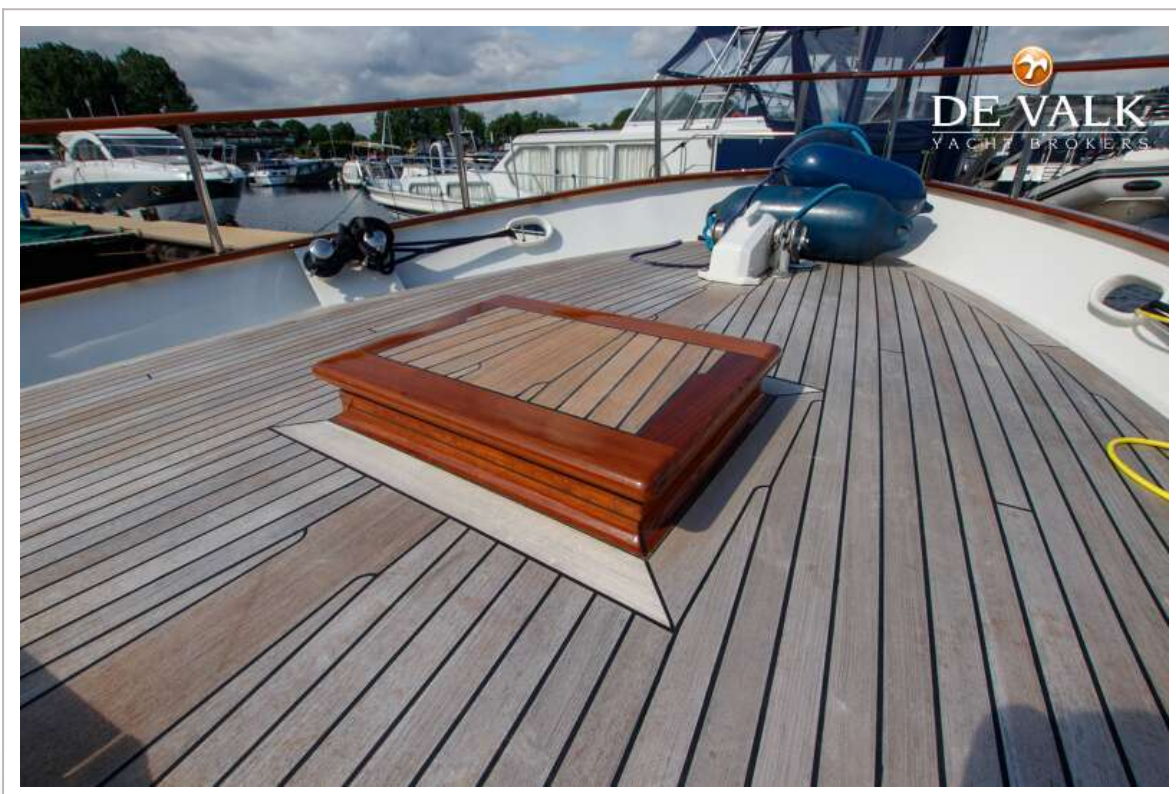
CLASSIC KOK CANOE STERN 16.50 'UIVER'



CLASSIC KOK CANOE STERN 16.50 'UIVER'



CLASSIC KOK CANOE STERN 16.50 'UIVER'



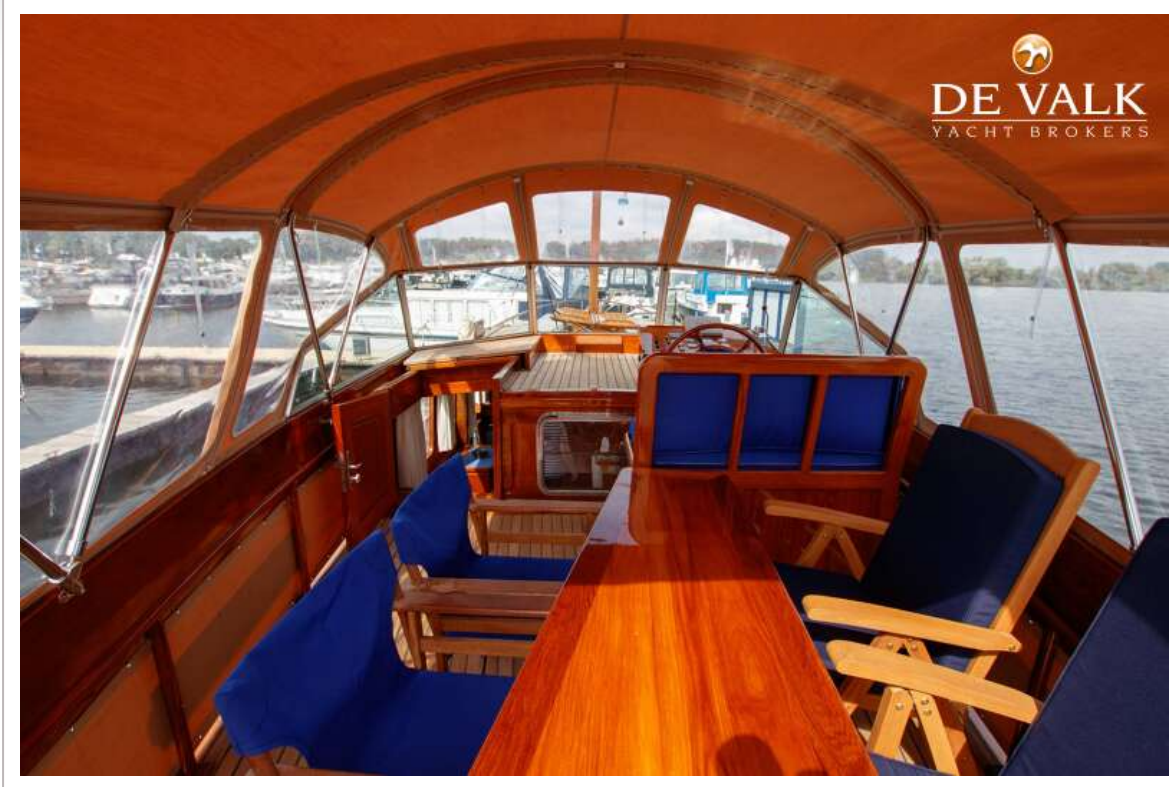
CLASSIC KOK CANOE STERN 16.50 'UIVER'



CLASSIC KOK CANOE STERN 16.50 'UIVER'



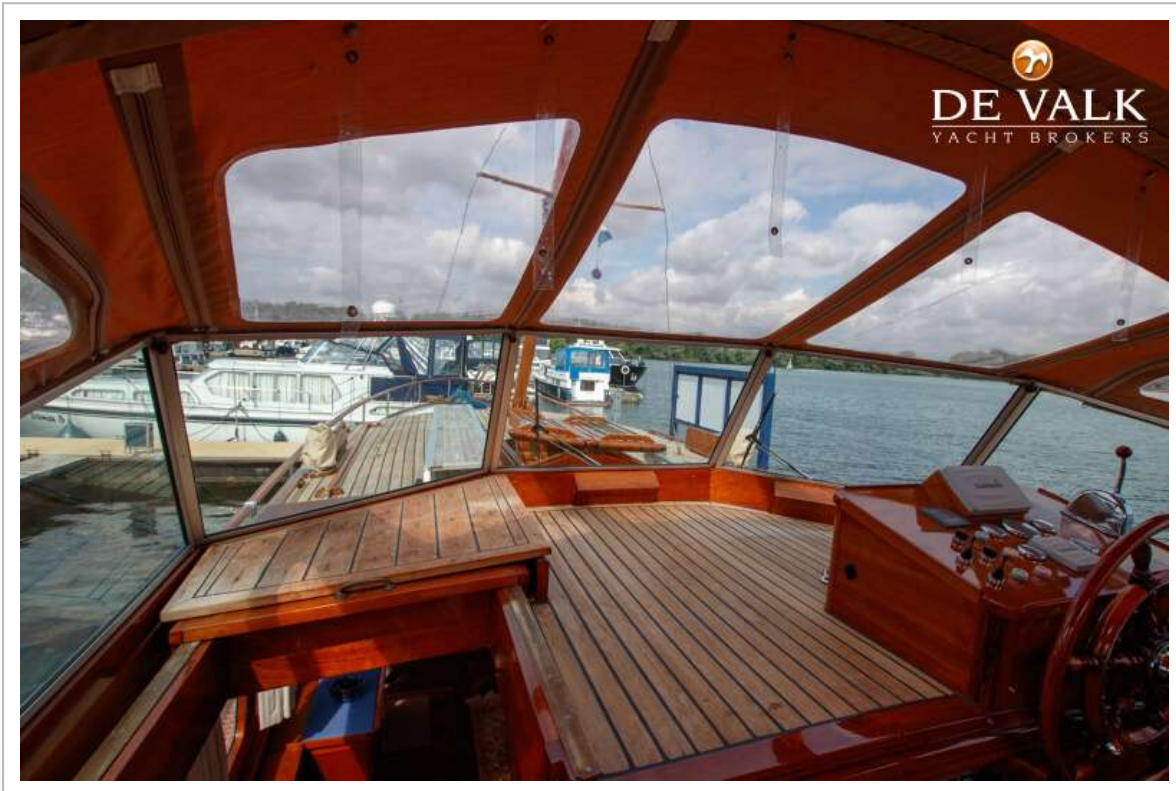
CLASSIC KOK CANOE STERN 16.50 'UIVER'



CLASSIC KOK CANOE STERN 16.50 'UIVER'



DE VALK
YACHT BROKERS



DE VALK
YACHT BROKERS



CLASSIC KOK CANOE STERN 16.50 'UIVER'



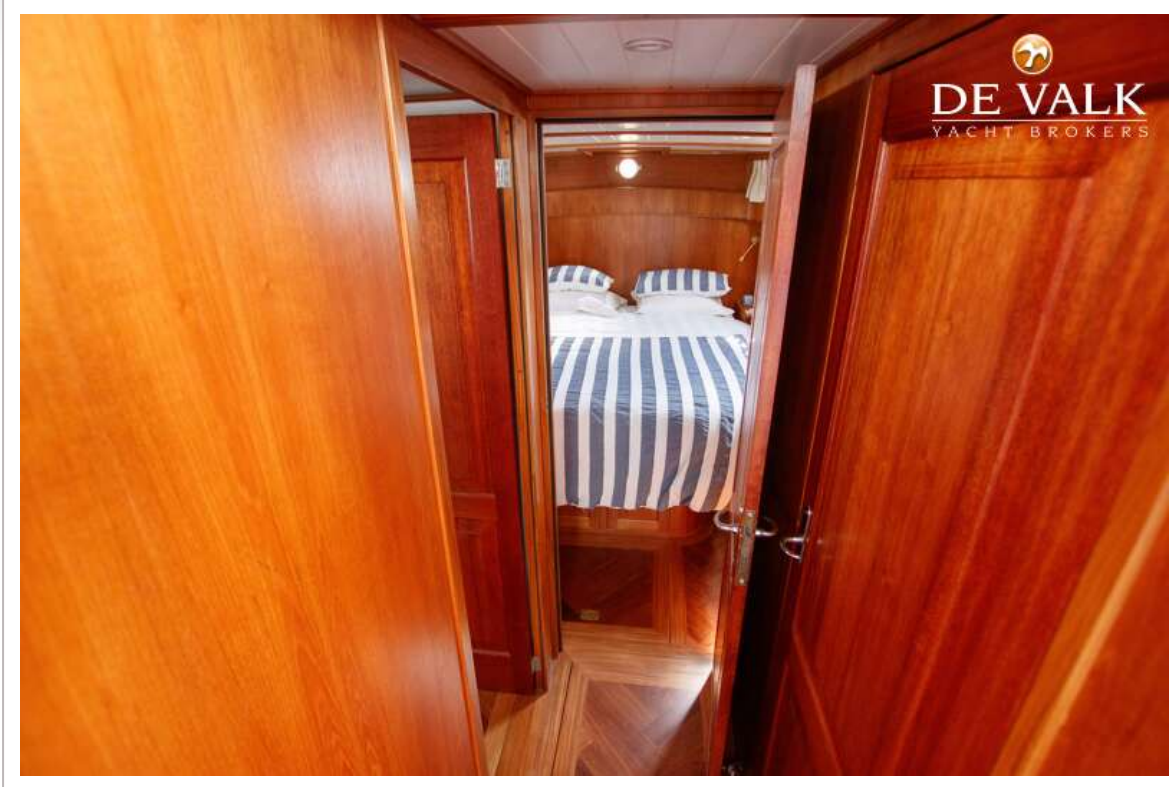
CLASSIC KOK CANOE STERN 16.50 'UIVER'



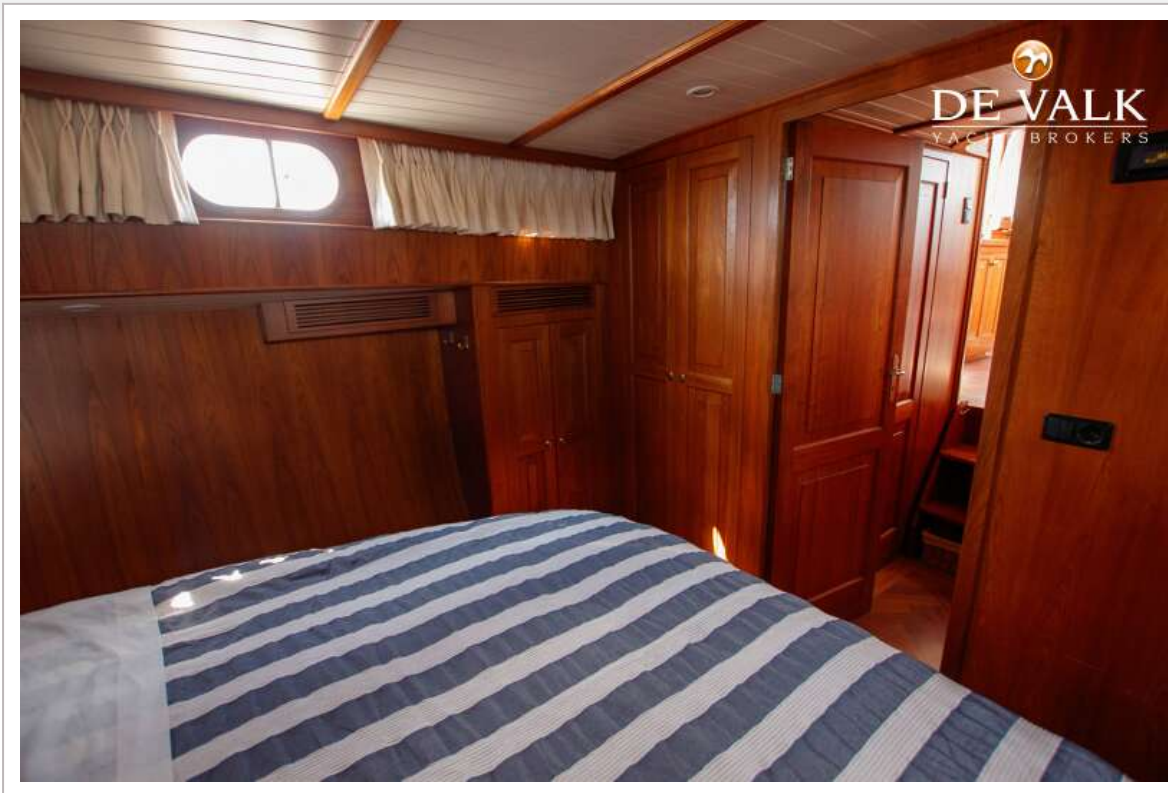
CLASSIC KOK CANOE STERN 16.50 'UIVER'



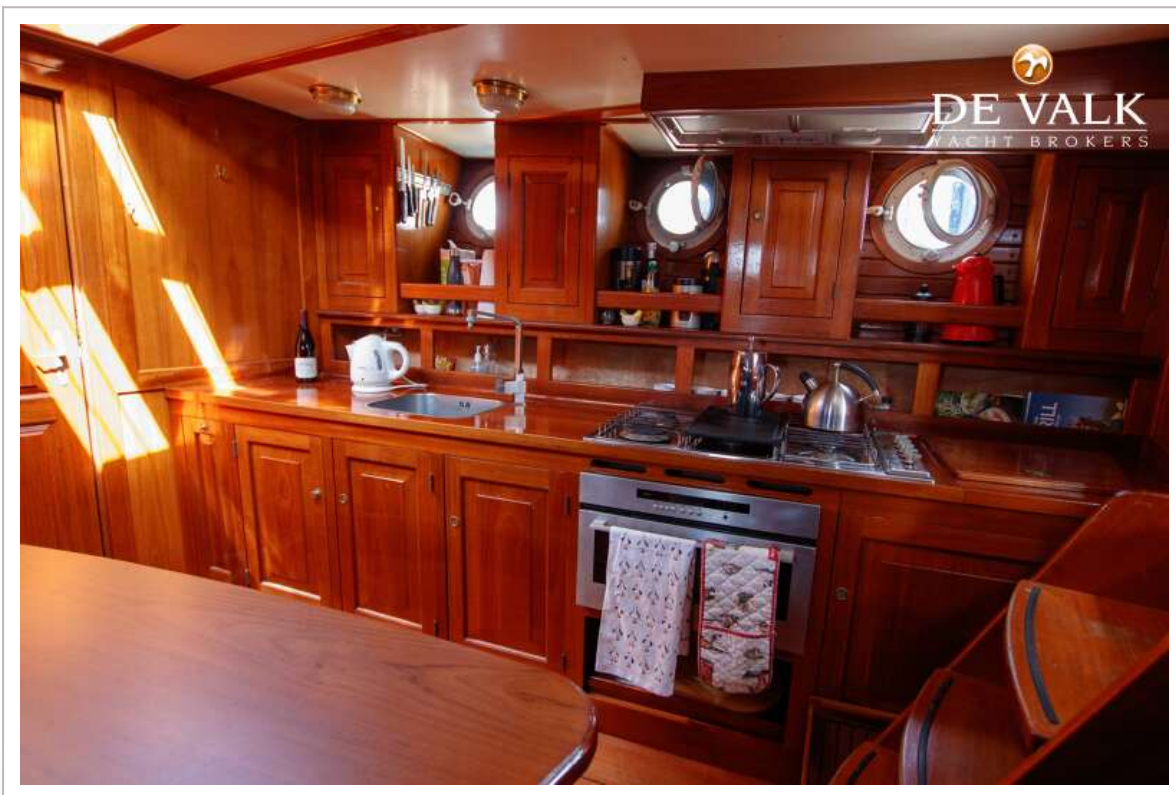
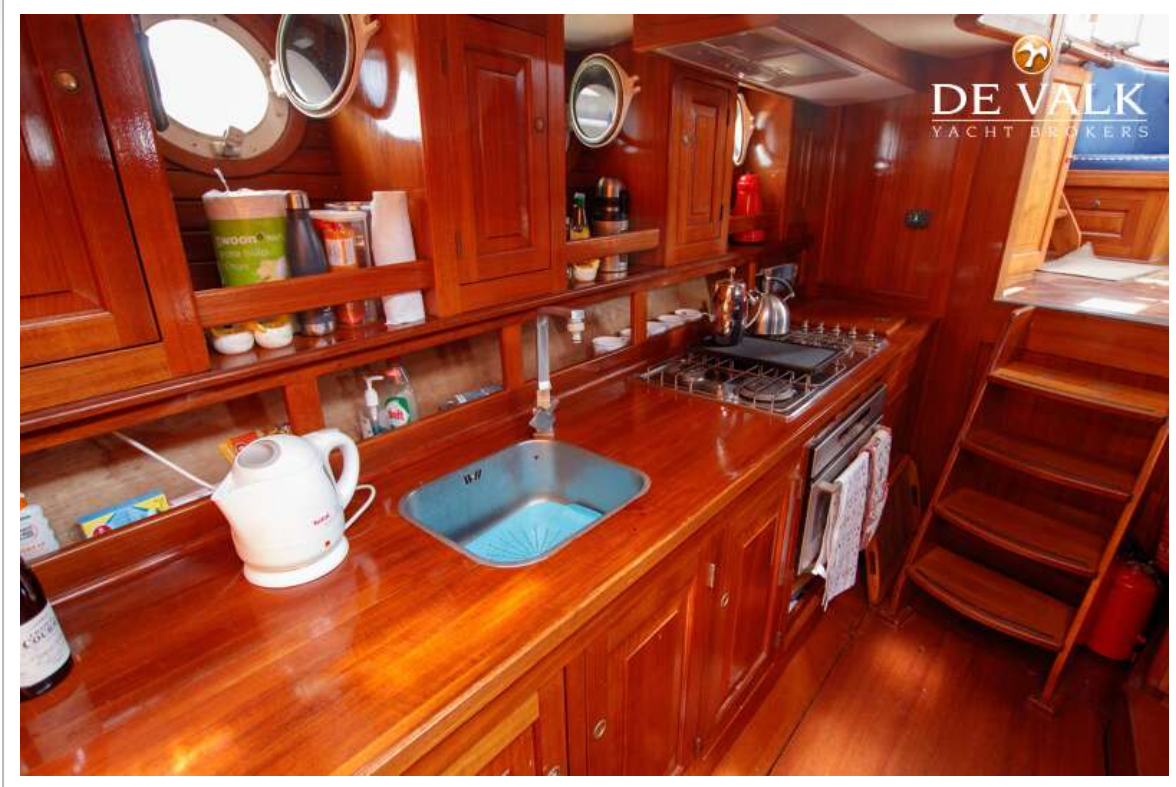
CLASSIC KOK CANOE STERN 16.50 'UIVER'



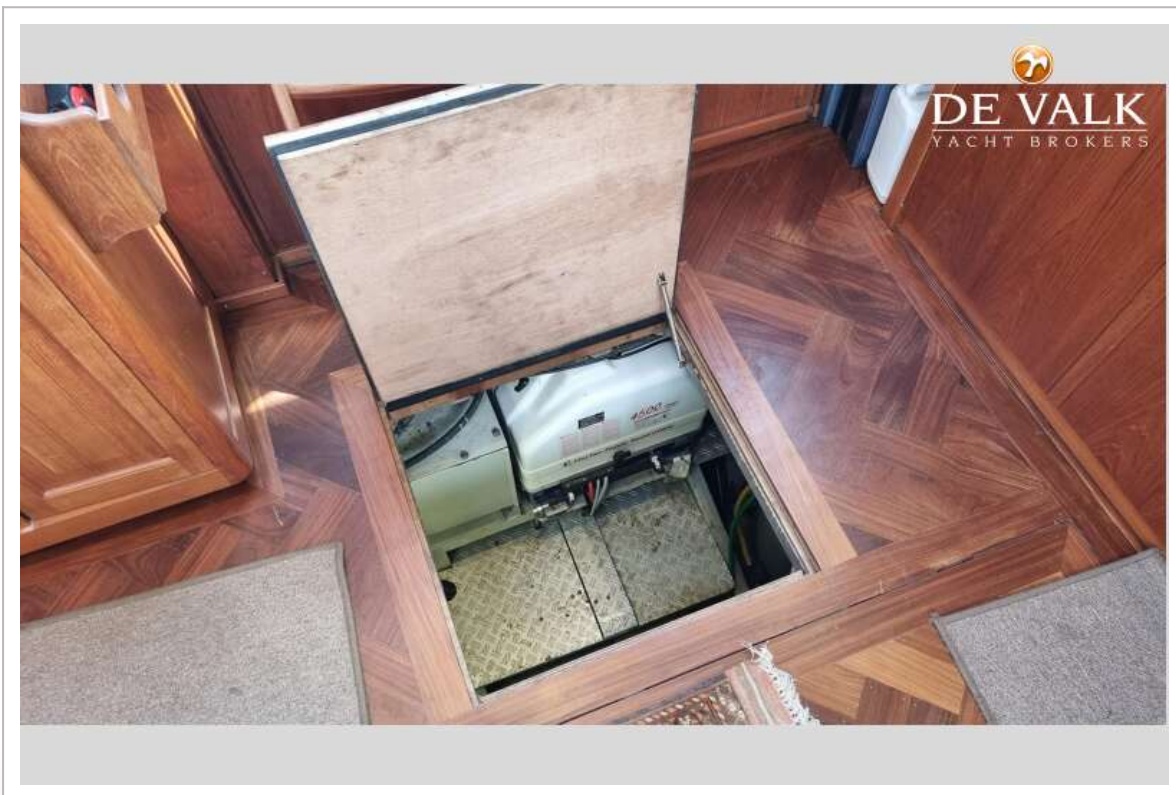
CLASSIC KOK CANOE STERN 16.50 'UIVER'



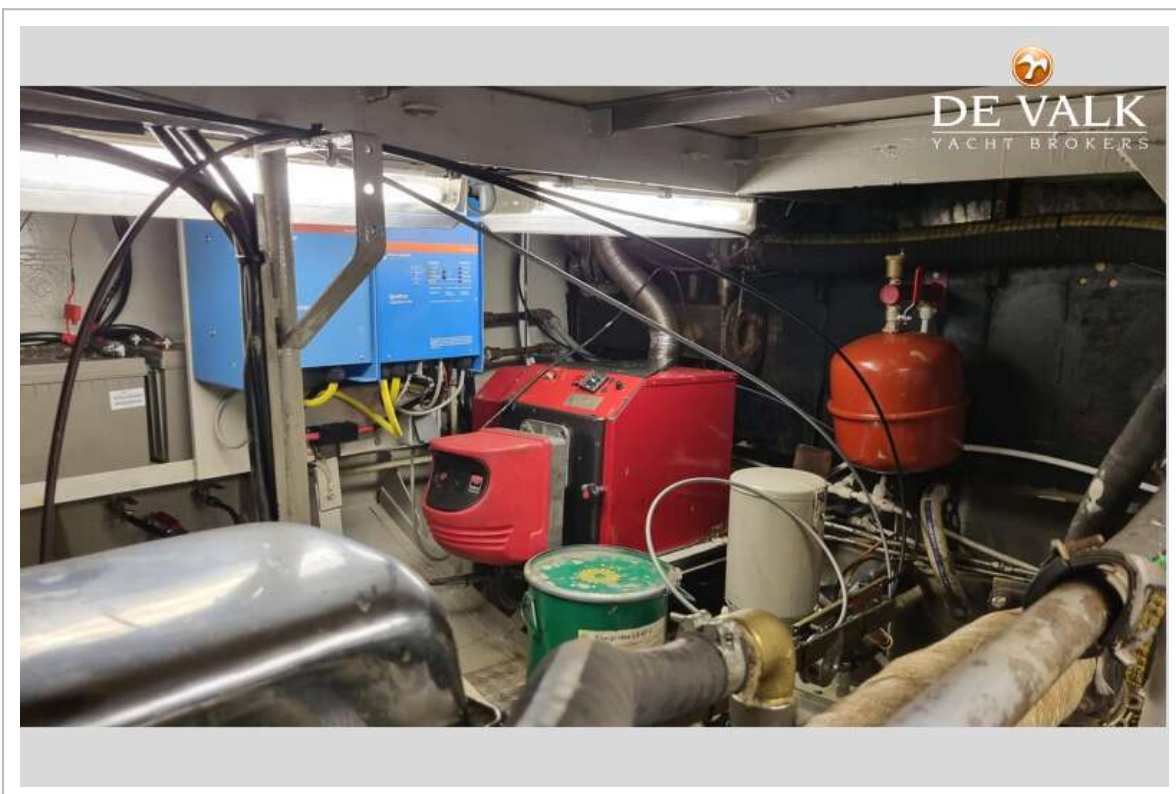
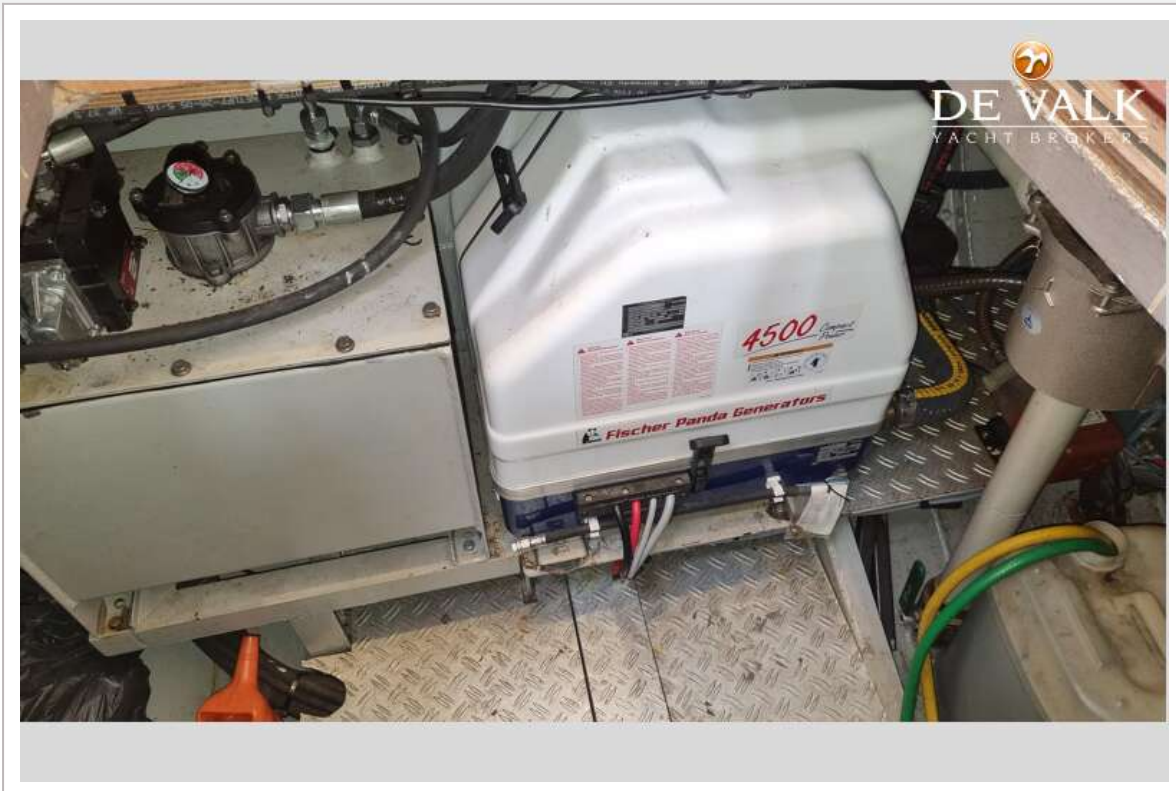
CLASSIC KOK CANOE STERN 16.50 'UIVER'



CLASSIC KOK CANOE STERN 16.50 'UIVER'



CLASSIC KOK CANOE STERN 16.50 'UIVER'



CLASSIC KOK CANOE STERN 16.50 'UIVER'

