



## NELSON 40 PILOT OPEN COCKPIT

# NELSON 40 PILOT OPEN COCKPIT

## BROKER'S COMMENTS

"White Shark" is a unique Nelson 40 with an Open Cockpit. This motor yacht was completely rebuilt in 2015/2016; deck, cockpit, aluminum superstructure, modern interior, wooden panelling, bathroom, galley, upholstery, 2x Perkins MC 250 with Trolling Mode, bow/stern thruster, tanks, electrical and navigation installations, etc. Only the full-glass GRP hull is still original from 1974.

*Jan-Ward van Dantzig*

## SPECIFICATIONS

<b>Dimensions</b>	12.00 x 3.60 x 1.10 (m)	<b>Builder</b>	Halmatic
<b>Built</b>	2015	<b>Cabins</b>	1
<b>Material</b>	GRP	<b>Berths</b>	3
<b>Engine(s)</b>	2 x Perkins MC 250 diesel	<b>Hp/Kw</b>	2 x 300.00 (hp), 220.80 (kw)
<b>Asking price</b>	sold (VAT )	<b>Lying</b>	The Netherlands

## CONTACT

<b>Sales office</b>	De Valk Sint Annaland B.V.	<b>Telephone</b>	+31 (0)166 601 000
<b>Address</b>	Koelhuisweg 4 4697 RM Sint Annaland NL	<b>E-mail</b>	sintannaland@devalk.nl

## DISCLAIMER

These particulars are given in good faith as supplied but cannot be guaranteed.



# NELSON 40 PILOT OPEN COCKPIT

## GENERAL

Model	NELSON 40 PILOT OPEN COCKPIT
Type	motor yacht
LOA (m)	12,00
Beam (m)	3,60
Draft (m)	1,10
Air draft (m)	5,50
Air draft min (m)	3,65
Headroom (m)	1,91
Year built	2015
Launched	after the complete renewing 2016
Builder	Halmatic
Country	United Kingdom
Designer	Arthur Mursell
Displacement (t)	12
Hull material	GRP
Hull colour	brown Basalt Brown / Den IJssel (repainted in 2022)
Hull shape	deep-V
Superstructure material	aluminium
Superstructure (mm)	6
Rubbing strake	plastic Polyurethaan
Deck material	GRP
Deck finish	non-skid paint
Superstructure deck finish	paint
Cockpit deck finish	synthetic teak Estec (2016)
Antifouling (year)	2022
Dorades	2 x Vetus Stainless steel (2016)
Window frame	aluminium Custom Made (2015)
Window material	tempered glass Custom Made (2015) & Ocean Air Sky Sol 2 furling curtains (2016)
Deckhatch	5x GEBO (2015) & 2x Sliding GEBO on roof (2015)
Portholes	GEBO (2015)



# NELSON 40 PILOT OPEN COCKPIT

Insulation	(2015)
Radar arch	collapsible (2015)
Fuel tank (litre)	GRP 2x 750 (2015 - including all hoses)
Level indicator (fuel tank)	(2015)
Fuel daytank (litre)	GRP 300 with automatic filling pump (2015 - including all hoses)
Level indicator (daytank)	(2015)
Freshwater tank (litre)	GRP 300 (2015 - including all hoses)
Level indicator (freshwater)	Offshore Systems NMEA 2000 (2017)
Blackwater tank (litre)	polyethylene 60 - Vetus (2015 - including all hoses)
Blackwater tank extraction	deck extraction + pump (2015 - including all hoses)
Wheel steering	hydraulic Stazo (2015)
Inside helm position	(2015)
Outside helm position	with remote control (2015) - wired - also engine + bow- /sterntester
Emergency tiller	manually operated (2015)
More info on hull	Hull painted in 2022 Only the full-glass GRP hull is still original from 1974.
More info on paintwork	The aluminum superstructure needs paint renewal in a few spots Outside and inside painted in 2015/2016
Extra info	Except hull / part of superstructure, everything has been completely renewed
Extra info	Gas springs on deck locker hatches and engine hatches (2015)
Extra info	Two steering blades

## ACCOMMODATION

Cabins	1
Berths	3
Interior	oak Canadian Oak (2015)
Layout	In the front a spacious owner's cabin with separate toilet/shower room behind it. Opposite the kitchen, then a step up to the cockpit/salon. About the same height back to the open cockpit (2015)
Floor	wood Walnut and holly (2015)



# NELSON 40 PILOT OPEN COCKPIT

Open cockpit	(2015)
Pilot house/deck saloon	(2015)
Saloon	LED lights Controller (2016)
Headroom saloon (m)	1,91
Heating	central hot water Webasto Thermo Pro 90 (2015)
Navigation center	(2015)
Convertible berth	(2015)
Opening door to cockpit	three wooden folding doors (2016)
Opening door to aft deck	opening door to the bathing platform (2015)
Galley	(2015)
Countertop	corian Black (2015)
Sink	Corian Black (2015)
Cooker	electric Force 10 3 burners (2015)
Oven	Force 10 (2015)
Extractor	Dometic (2016)
Fridge	with freezer compartment Isotherm (2015)
Hot water system	220V/engine/heating (2015)
Water pressure system	electrical (2015)
Kettle	Graef (2017)
Coffee maker	Nespresso Magimix (2018)
Owners cabin	double bed (2015)
Bed length (m)	2,00 x 1,60
Wardrobe	hanging/drawers/shelves (2015)
Bathroom	separate (2015)
Toilet	separate (2015)
Toilet system	electric Jabsco Deluxe Flush (2015)
Wash basin	in the bathroom (2015)
Shower	separate With Easy Drain Multi showerfloor drainage (2015)
Extra info	2x professional seat, Skipper seat is adjustable (on rails) NORSAP (2022)
Extra info	Upholstery and luxe mattresses (2017)



## MACHINERY

No of engines	2
Make	Perkins
Type	MC 250
HP	300
kW	220.80
Fuel	diesel
Year installed	2015
Maximum speed (kn)	24
Cruising speed (kn)	16
Consumption (l/hr)	60
Engine hours	1540
Engine cooling system	freshwater heat exchanger (2015)
Drive	shaft
Shaft seal	Water lubrication with exchangeable gasket 2x Sure Seal System (2015)
Engine controls	electrical Navio 202 (2015)
Gearbox	hydraulic With 'trolling valve" / Slow Speed Device (2015)
Bowthruster	electric Maxpower Bellmarine Bow Adjust 0-100% (2013 - installed in 2015)
Sternthruster	electric Maxpower Bellmarine Bow Adjust 0-100% (2013 - installed in 2015)
Exhaust	watercooled 2x (2015)
Propeller type	fixed 2x (2018)
Propeller blades	2x 4 (2018)
Propeller shaft material	stainless steel 2x 44,7 mm (2015)
Shaft lubrication	water 2x
Manual bilge pump	(2015)
Electric bilge pump	3 x Rule (2015) + large emergency pump (2015)
Bilge alarm	(2016)
Electrical installation	12/24/230 (2015-2017)
Batteries	8 x



# NELSON 40 PILOT OPEN COCKPIT

<b>Start battery</b>	4x Optima Red Top 50 Ah (2016)
<b>Service battery</b>	4x Victron Lynx Ion+Shunt 35/600 24V/18Ah Lithium Ion (2017)
<b>Battery monitor</b>	Lynx Ion Lithium Battery Management System (2016)
<b>Battery charger</b>	Victron Blue Power charger 12/25 (2016)
<b>Battery charger/inverter</b>	VICTRON Quatro 24/5000 (2016)
<b>Shorepower</b>	with cable (2015)
<b>Insulation transformer</b>	Victron Isolation Transformer 2000 W (2016)
<b>Trimtabs</b>	Is not really necessary and the current trim flaps do not work
<b>Extra info</b>	2x 12V/90A Alternator (2015)+2x 24V/54A Balmar Alternator (2015)
<b>Extra info</b>	Balmar Voltage Regulator (2017)
<b>Extra info</b>	Jabsco engine room extractor (2016)

## NAVIGATION

<b>Compass</b>	Plastimo Offshore 75 (2016) + Neco Compass
<b>Electric compass</b>	Raymarine & VDO (2016)
<b>Multi control display</b>	Raymarine i70S (2019)
<b>Depth sounder/log</b>	Raymarine i70S (2019)
<b>Forw. looking depth sounder</b>	yes
<b>Windset</b>	Raymarine i70S (2019)
<b>VHF</b>	Raymarine 260 (2016)
<b>Autopilot</b>	Hydrosta Navio 290 Pilot (2014)
<b>Rudder angle indicator</b>	2x Simrad I3005 (2017)
<b>Radar</b>	Raymarine Quantum 2 (2016) & Koden MDS-52R (2016)
<b>Radar/GPS/plotter</b>	Raymarine Axiom XL24MFD & Card reader (2019) & 2x screen (2018)
<b>Personal computer</b>	(2016 - Windows - with USB connectors)
<b>PC connection</b>	with Yacht Control on the two screens on starboard side in the pilot house (2017)
<b>Electronic chart(s)</b>	(2022)
<b>AIS transceiver</b>	AIS CTRX Graphene+ Class-B CS transponder+VHF splitter (2014)



Camera	Facing the stern and in engine room Sony MXN (2018) - Raymarine (Facing Bow - 2018)
Navigation lights	Lopolight LED (2016)
Searchlight	2 x Jabsco Searchlight LTTC with remote (2016)
Extra info	Airmar Weather Station 150 W (2015)
Extra info	Remote Battery Switches ML Series (2015)

## EQUIPMENT

Sun awning	with carbon poles
Cockpit cushions	Grey (2017)
Bathing platform	(2015) with Estec (2015)
Boarding ladder	stainless steel (2015)
Transom door	2 x Glass door (2015)
Deck shower	(2016)
Anchor	CQR Plough
Anchor chain	80 /10mm
Windlass	electrical Simpson-Lawrence Seawolf 520 (overhauled in 2015)
Deck wash	2 x Jabsco (2016)
Grab rail (superstructure)	aluminium
Rope cutter	2x Europrop Rope Cutter (2015)
Wiper	with rain sensor + wash-down 3 x Exalto Windshield Wiper (2012 - installed in 2015)
Window ventilator	(2017)
Horn	air pressure Kahlenberg (2017)
Fenders	(2016)
Mooring lines	(2016)
Spare parts	yes
TV	rotatable from saloon to cockpit Samsung LED (2018)
TV receiver	Via Internet
TracVision ball	(2016)
Radio	Fusion MS-RA770 (2020)
Sub-woofer	(2021)





# NELSON 40 PILOT OPEN COCKPIT

Cockpit speakers	2 x Maestro (2017)
Speakers in salon	4 x Gladen CR-SQ (2016)
Clock - barometer	yes
Fire extinguisher	2 x (need to be surveyed)
Extinguisher in engine room	Marine Fire 727 Series FM-200 (2012)
Auto extinguisher system	in engine room Halyard Sea Strainer Alarm (2016)
Extra info	Carbon Flagpole (2017)
Extra info	Ocean LED lights in cockpit & various colours underwater (2017)
Extra info	Hella Seahawk LED Deck Flood lights (2017)



# NELSON 40 PILOT OPEN COCKPIT



# NELSON 40 PILOT OPEN COCKPIT

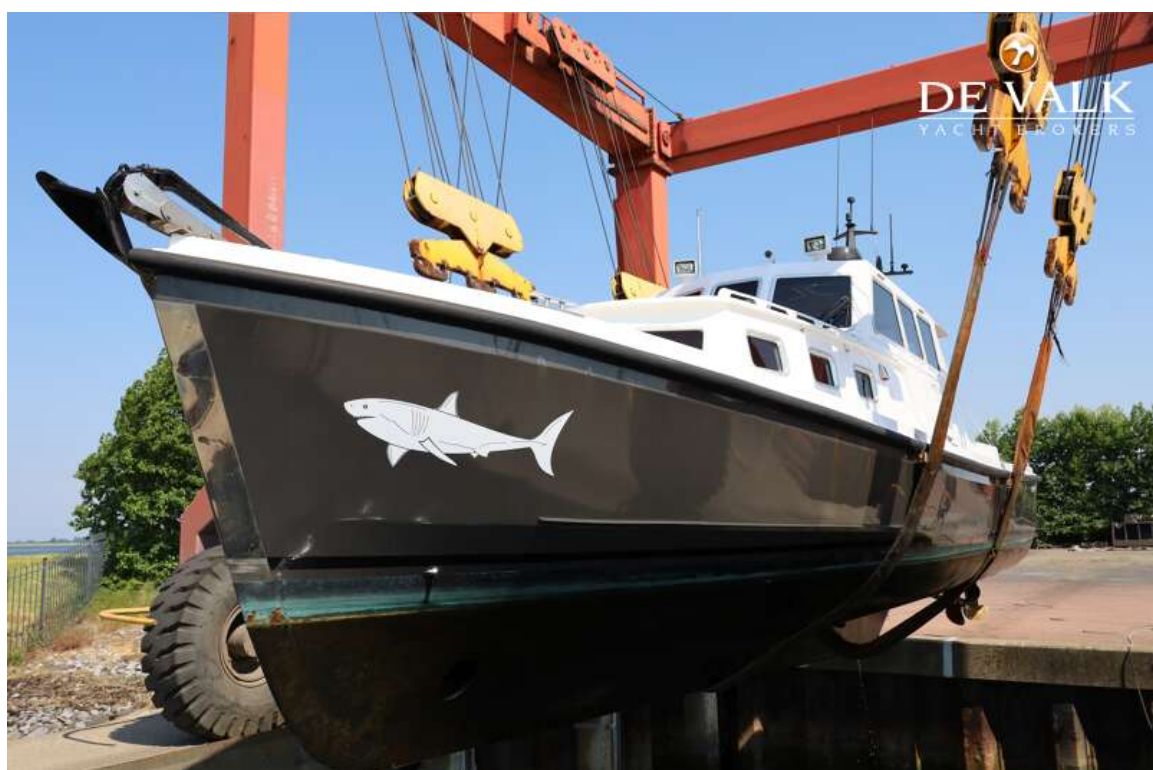


# NELSON 40 PILOT OPEN COCKPIT





# NELSON 40 PILOT OPEN COCKPIT



# NELSON 40 PILOT OPEN COCKPIT





# NELSON 40 PILOT OPEN COCKPIT

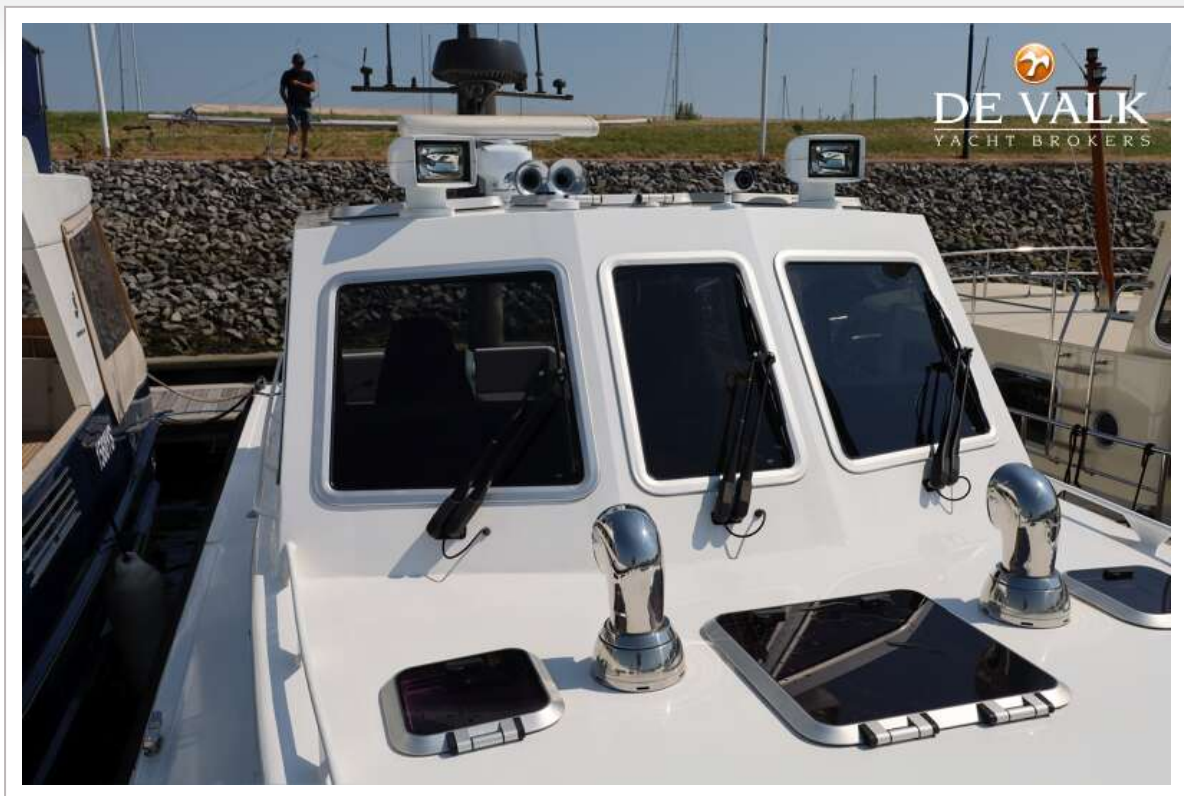


# NELSON 40 PILOT OPEN COCKPIT





# NELSON 40 PILOT OPEN COCKPIT



# NELSON 40 PILOT OPEN COCKPIT

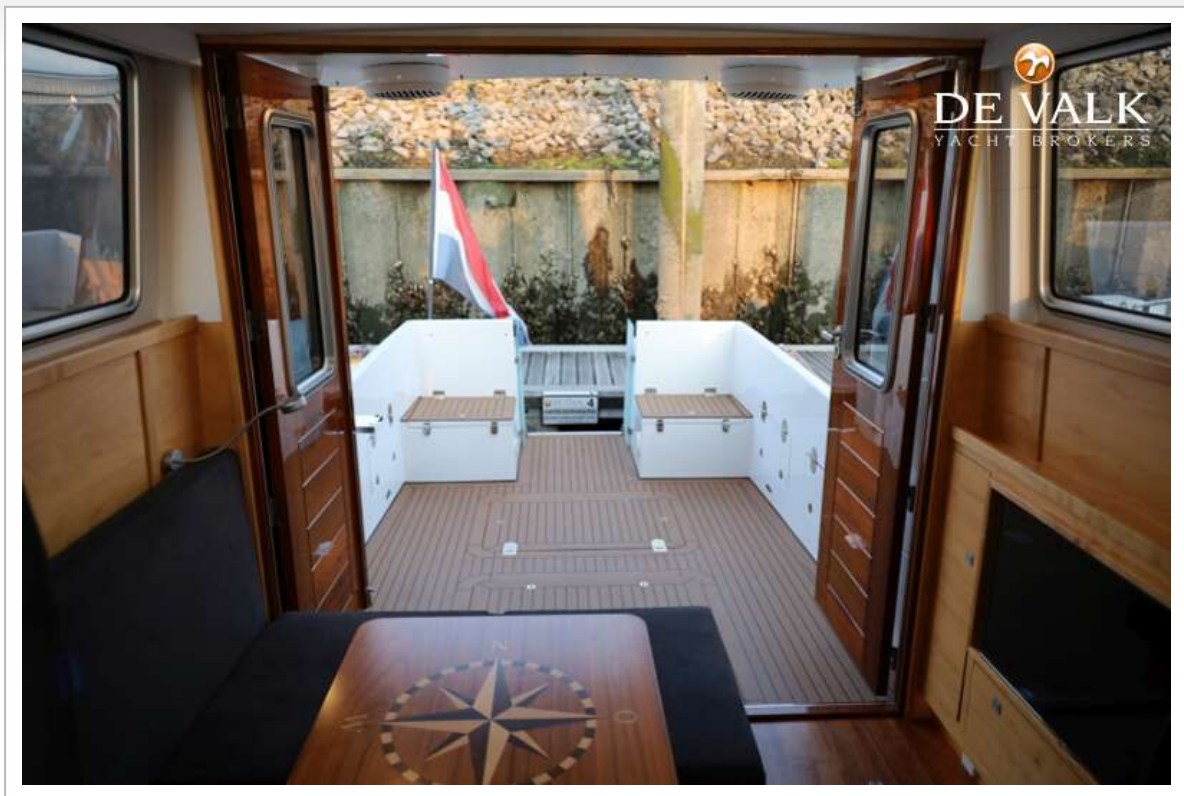




# NELSON 40 PILOT OPEN COCKPIT

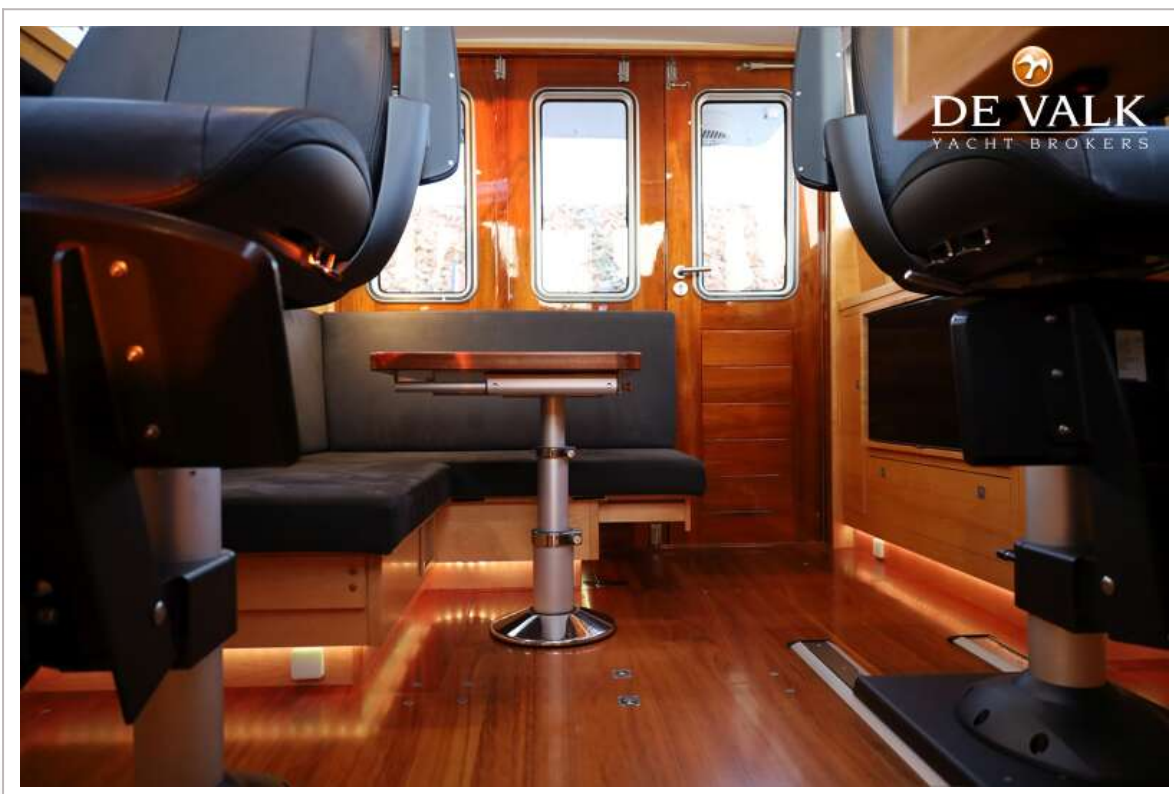
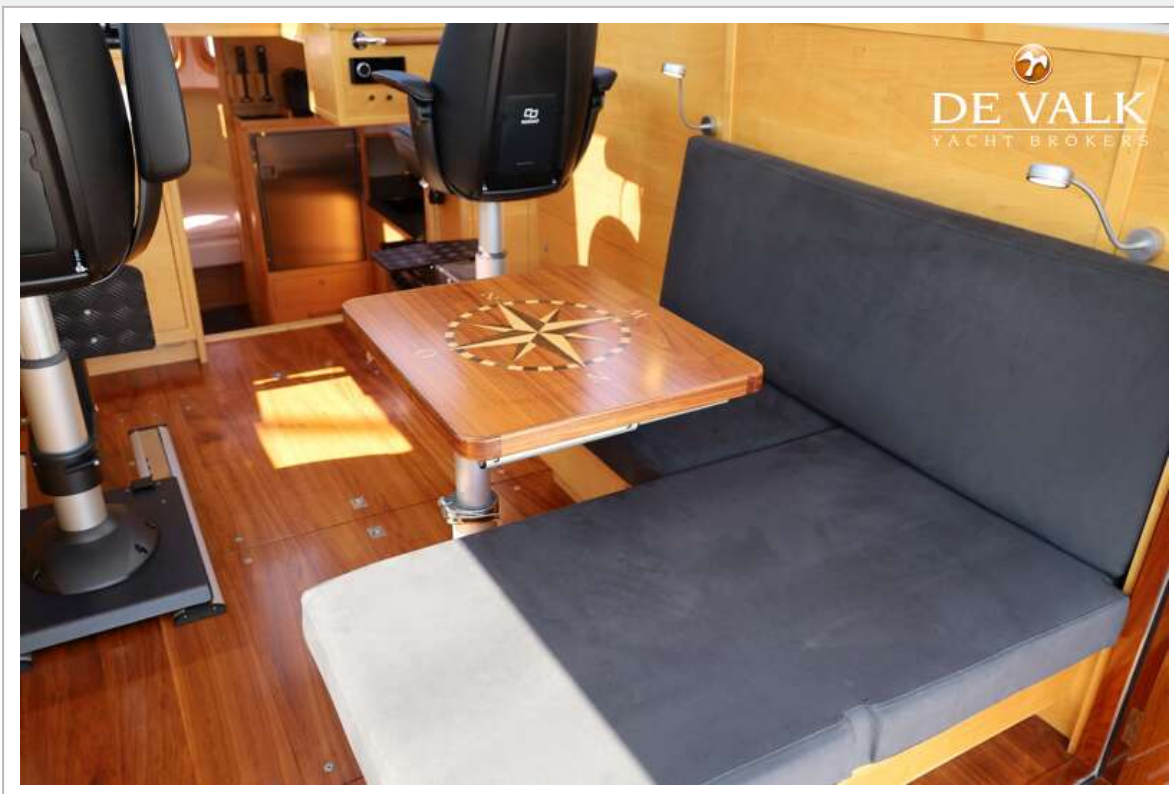


# NELSON 40 PILOT OPEN COCKPIT





# NELSON 40 PILOT OPEN COCKPIT

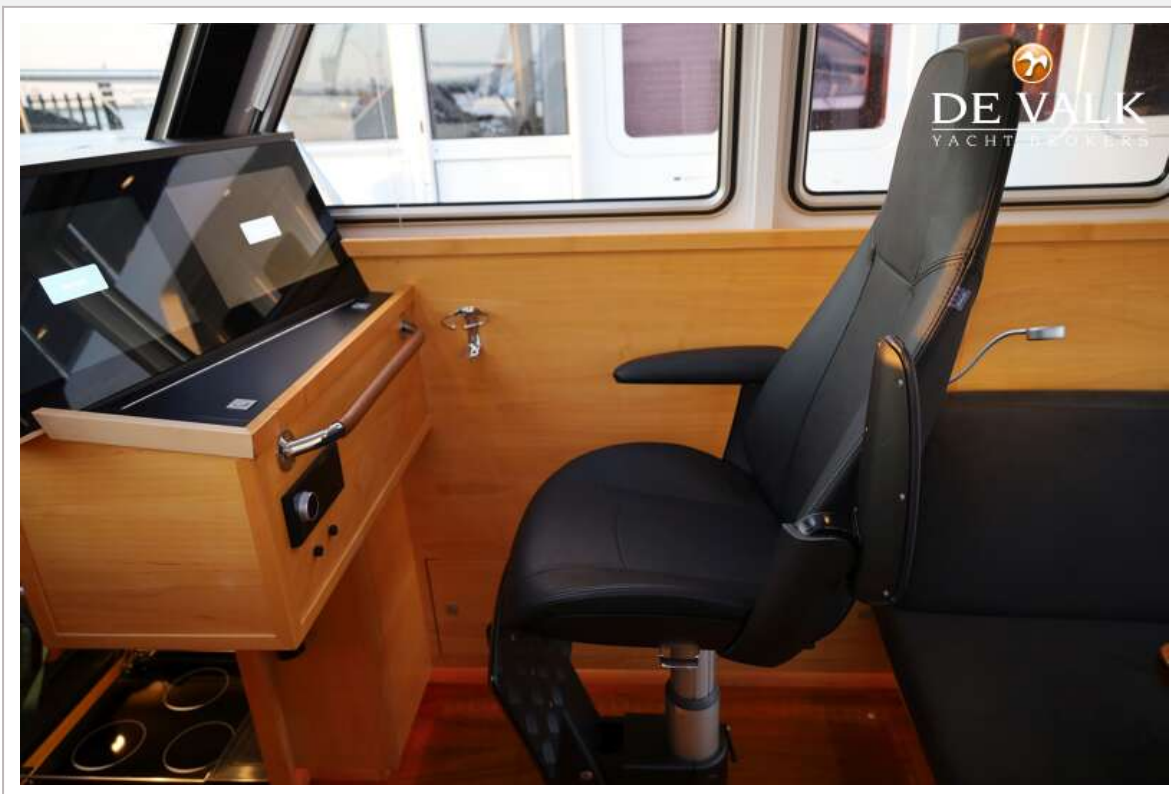


# NELSON 40 PILOT OPEN COCKPIT





# NELSON 40 PILOT OPEN COCKPIT



# NELSON 40 PILOT OPEN COCKPIT





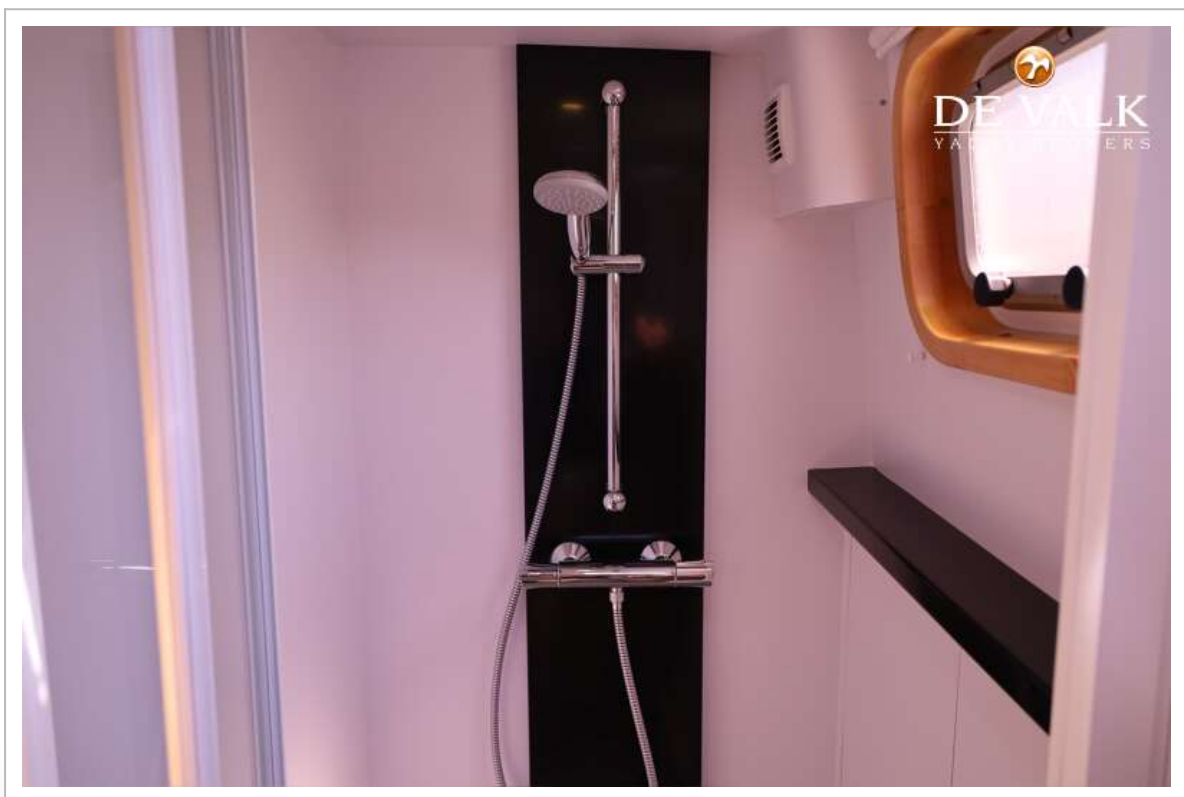
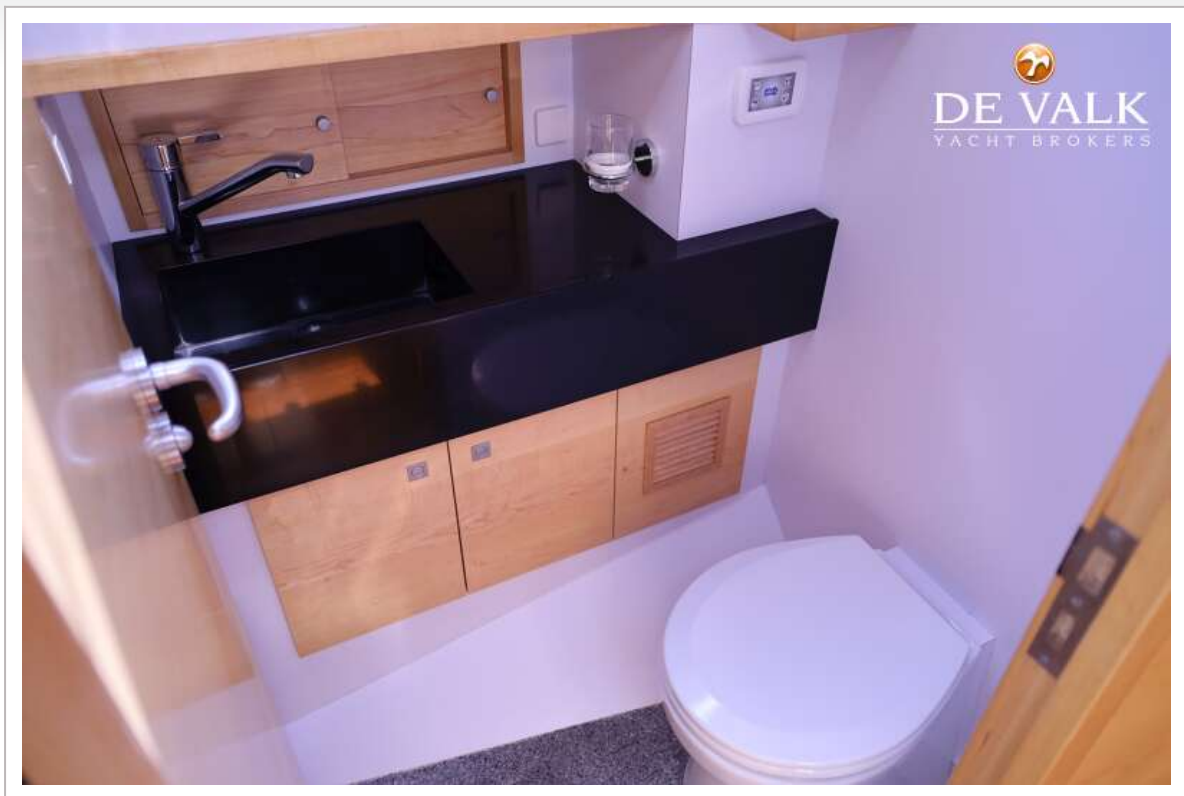
# NELSON 40 PILOT OPEN COCKPIT



# NELSON 40 PILOT OPEN COCKPIT

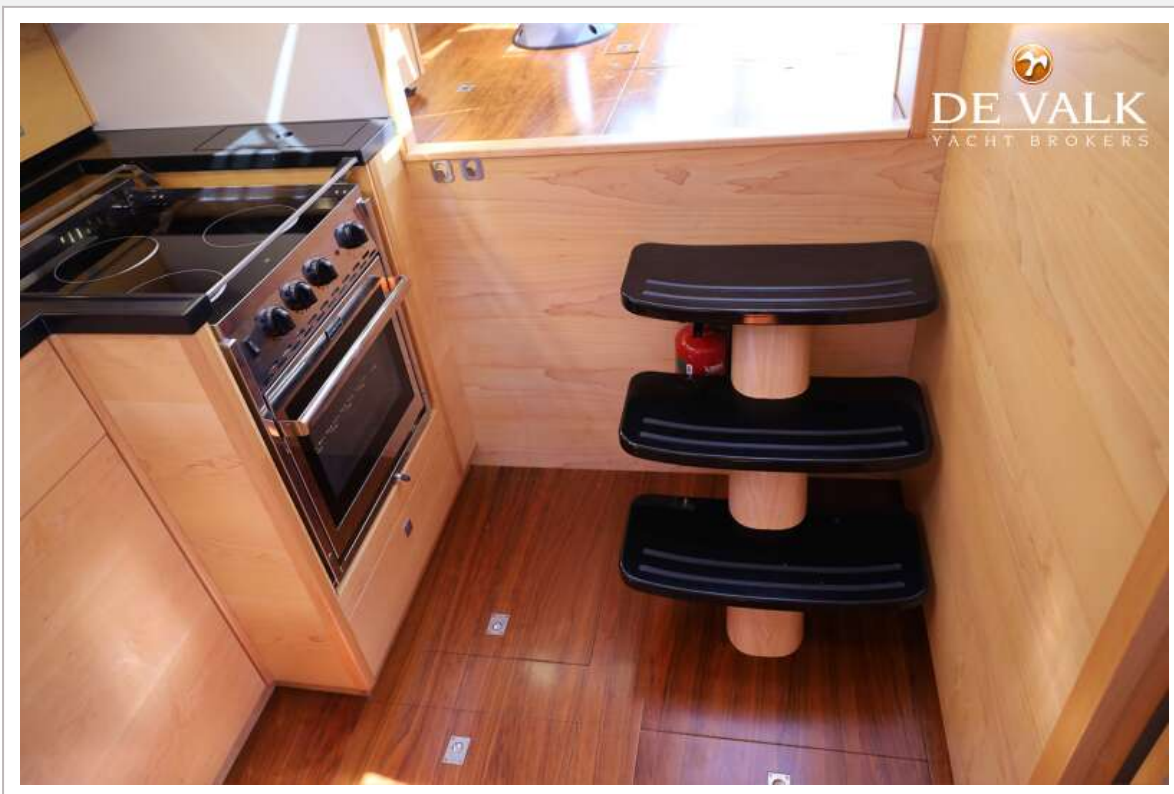


## NELSON 40 PILOT OPEN COCKPIT

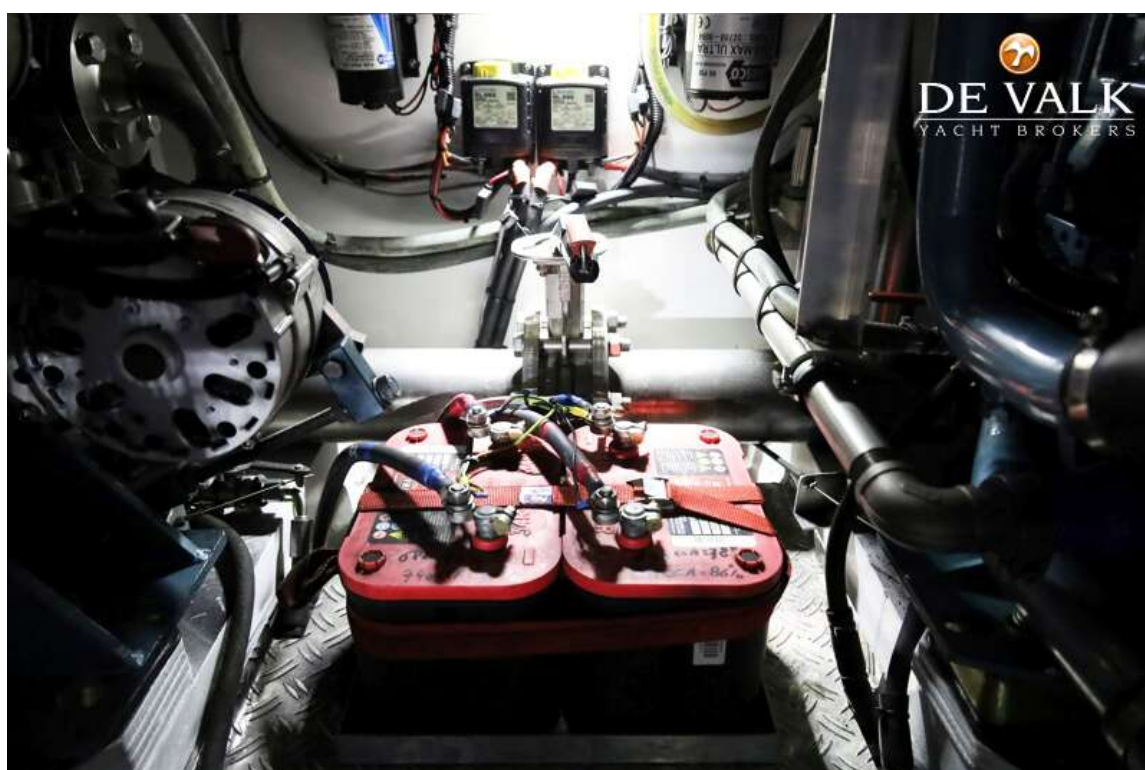




# NELSON 40 PILOT OPEN COCKPIT



# NELSON 40 PILOT OPEN COCKPIT





# NELSON 40 PILOT OPEN COCKPIT



# NELSON 40 PILOT OPEN COCKPIT

