



NEPTUNUS 106

BROKER'S COMMENTS

GRP built motor yacht with beautifully finished teak interior. This popular Neptune 106 has been well maintained and continuously upgraded. With 2 cabins and 2 toilets and shower, second helm on aft deck, this Neptune 106 is ready to go.

Jochem Heijermans

SPECIFICATIONS

Dimensions	10.60 x 3.60 x 1.00 (m)	Builder	
Built	1987	Cabins	2
Material	GRP	Berths	6
Engine(s)	2 x Volvo Penta TAMD 41 diesel	Hp/Kw	2 x 200.00 (hp), 147.00 (kw)
Asking price	sold (VAT)	Lying	elsewhere / Not at sales office

CONTACT

Sales office	De Valk Belgium	Telephone	+32 586 80 218
Address		E-mail	belgium@devalk.nl
	1401 PT Nieuwpoort		
	BE		

DISCLAIMER

These particulars are given in good faith as supplied but cannot be guaranteed.



GENERAL

Model	NEPTUNUS 106 AK
Type	motor yacht
LOA (m)	10,60
Beam (m)	3,60
Draft (m)	1,00
Air draft (m)	3,45
Headroom (m)	1,90
Year built	1987
Country	The Netherlands
Displacement (t)	10
Hull material	GRP
Hull colour	white
Hull shape	deep-V
Superstructure material	GRP
Rubbing strake	plastic
Deck material	GRP
Deck finish	non-skid moulded in
Superstructure deck finish	non-skid moulded in
Cockpit deck finish	teak
Window frame	aluminium
Window material	tempered glass
Deckhatch	yes
Portholes	aluminium
Mast can be lowered	manual
Fuel tank (litre)	steel Approx. 850 l
Fuel tank 2 (litre)	yes
Level indicator (fuel tank)	yes
Freshwater tank (litre)	Approx 250
Level indicator (freshwater)	yes
Blackwater tank (litre)	Approx 65l



Wheel steering	hydraulic 2x
Inside helm position	yes

ACCOMMODATION

Cabins	2
Berths	6
Floor	carpet + teak and holly
Aft deck	yes
Saloon	yes
Heating	diesel ducted hot air Eberspächer Airtronic D4
Dinette to convert into berth	yes
Opening door to aft deck	yes
Galley	yes
Countertop	wood
Sink	stainless steel
Cooker	electric Bosch
Microwave/oven combi	Panasonic
Fridge	With freezing compartment
Freezer	yes
Hot water system	220V + engine 60l boiler
Water pressure system	electrical
Owners cabin	French bed
Wardrobe	hanging/drawers/shelves
Bathroom	en suite
Toilet	en suite
Toilet system	electric
Wash basin	in the bathroom
Shower	en suite
Guest cabin 1	v-bed Or dubbel
Bathroom	yes
Toilet	en suite



Toilet system manual

MACHINERY

No of engines	2
Make	Volvo Penta
Type	TAMD 41
HP	200
kW	147
Fuel	diesel
Year installed	1987
Maximum speed (kn)	18
Engine cooling system	freshwater heat exchanger
Drive	shaft
Engine controls	bowden cable
Bowthruster	electric Vetus
Exhaust	watercooled
Propeller type	fixed
Propeller shaft material	stainless steel
Shaft lubrication	grease
Electric bilge pump	yes
Electrical installation	12V/220V
Generator	silent separator Fisher Panda 6KW
Batteries	yes
Battery charger	yes

NAVIGATION

Compass	Plastimo
Electric compass	VDO Logic
Depth sounder	VDO Logic
Depth sounder/log	VDO MAP 8 needs to be serviced
VHF	Shipmate



Rudder angle indicator	yes
Plotter/GPS	VDO MAP 8 needs to be serviced
Navigation lights	yes

EQUIPMENT

Cockpit cover	yes
Bathing platform	yes
Boarding ladder	aluminum
Anchor	yes
Windlass	electrical
Deck wash	yes
Sea railing	stainless steel
Grab rail (superstructure)	stainless steel
Railing side opening gates	2x
Pushpit	yes
Pulpit	yes
Wiper	3x
Horn	electric
Fenders	yes
Mooring lines	yes
TV	yes
Satellite	Snipe
Radio	yes
Cockpit speakers	yes
Speakers in salon	yes
Fire extinguisher	yes



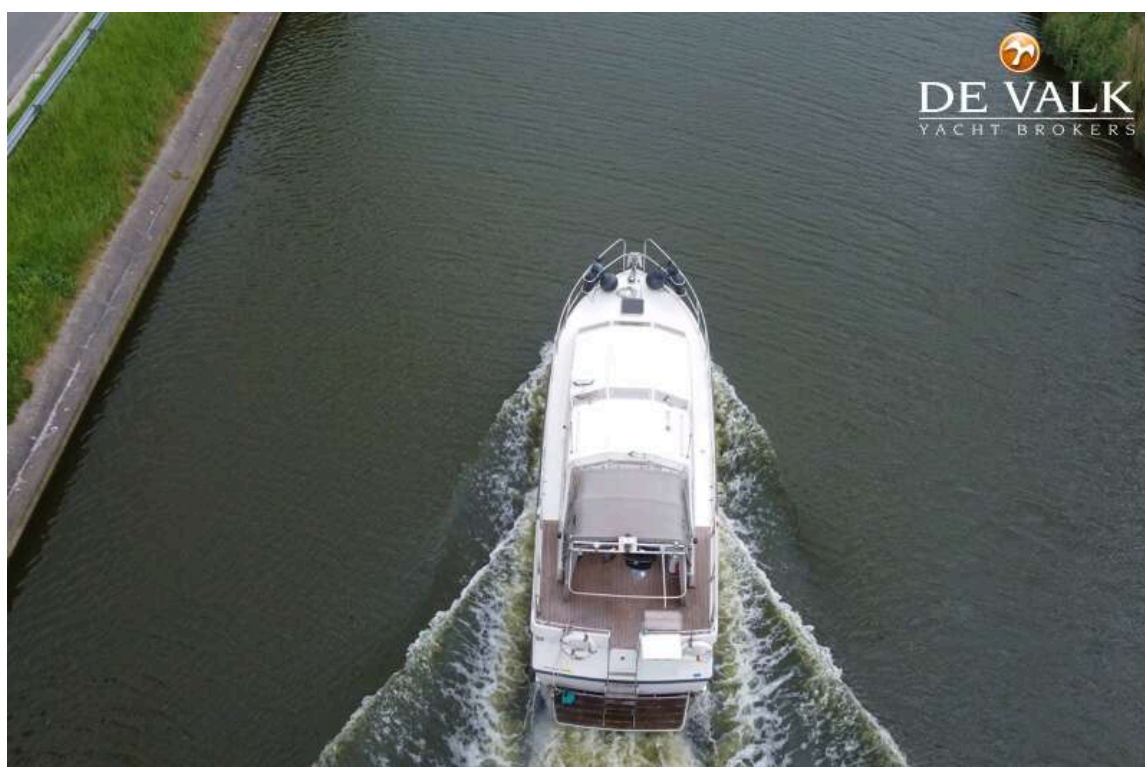
NEPTUNUS 106



NEPTUNUS 106



NEPTUNUS 106



NEPTUNUS 106



NEPTUNUS 106





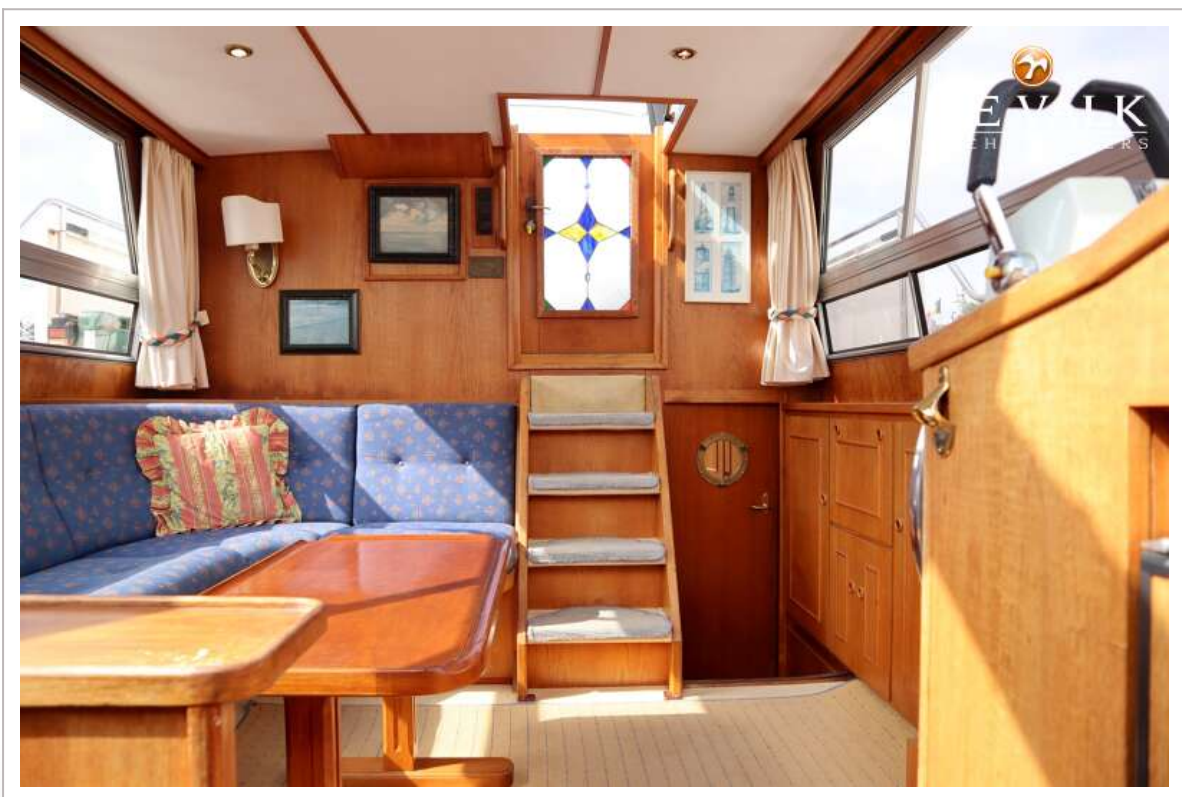
NEPTUNUS 106



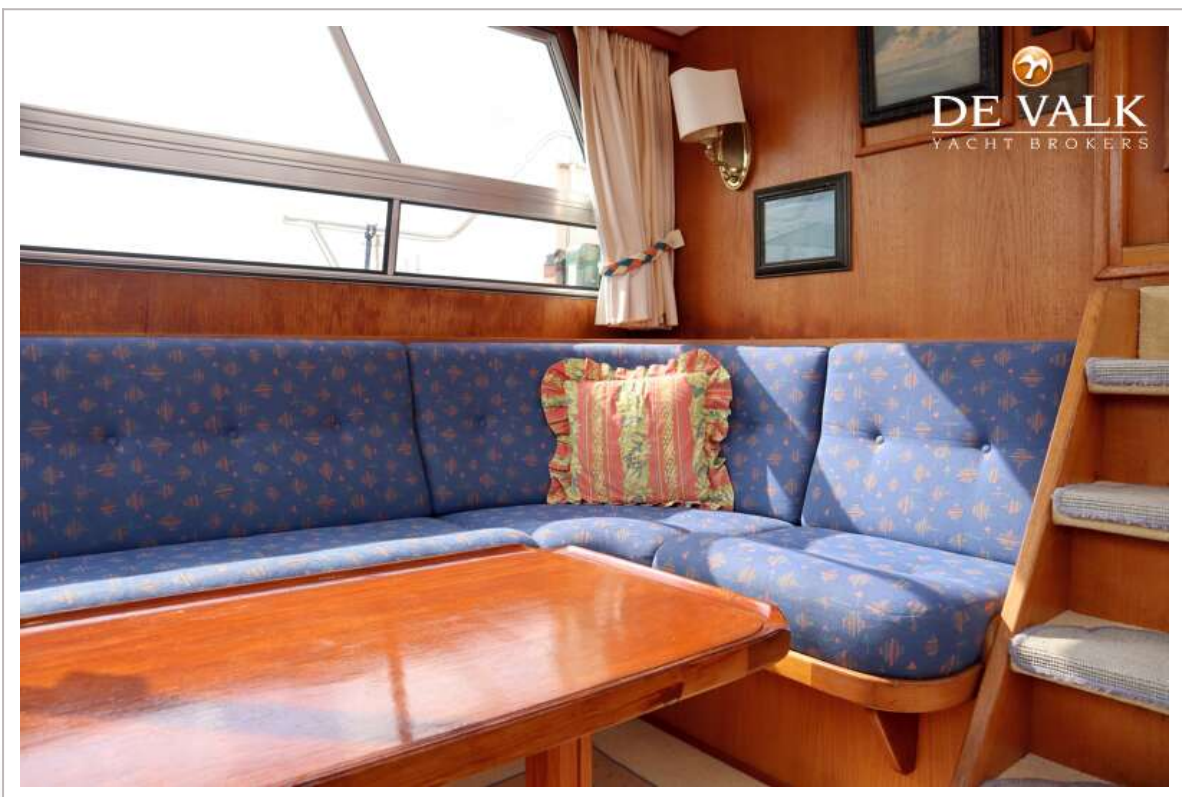




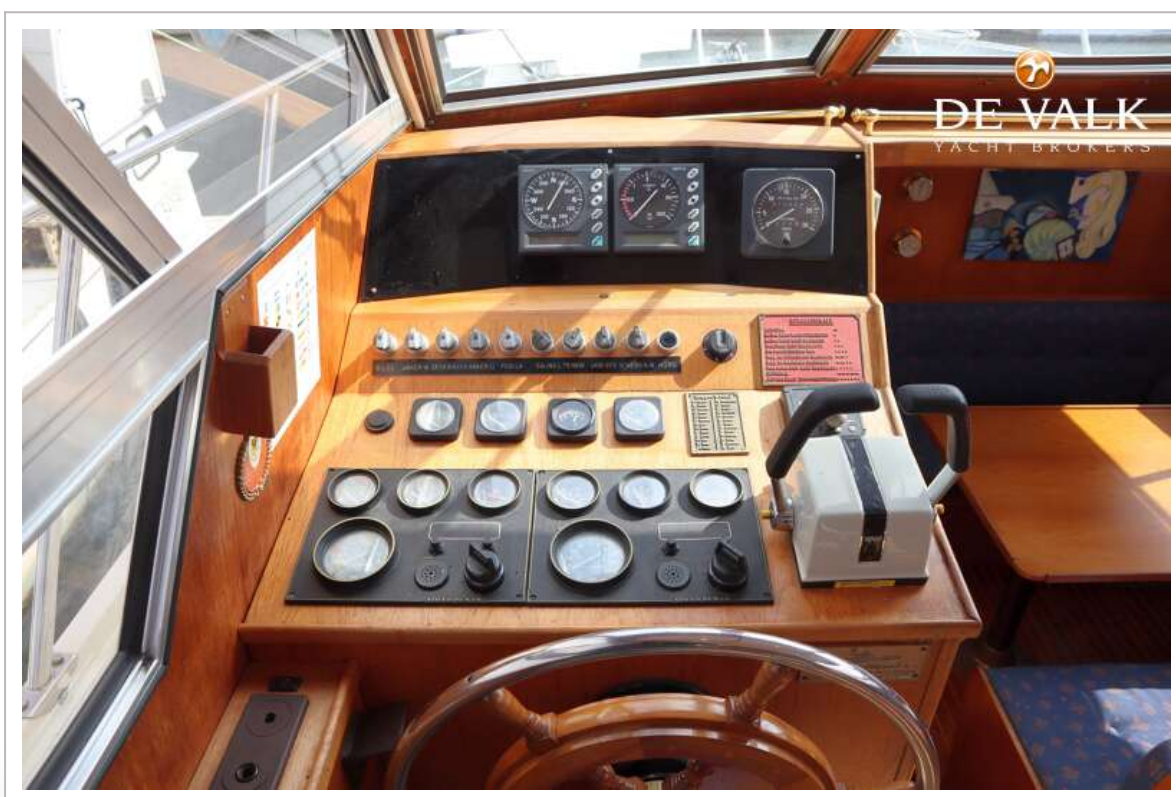
NEPTUNUS 106



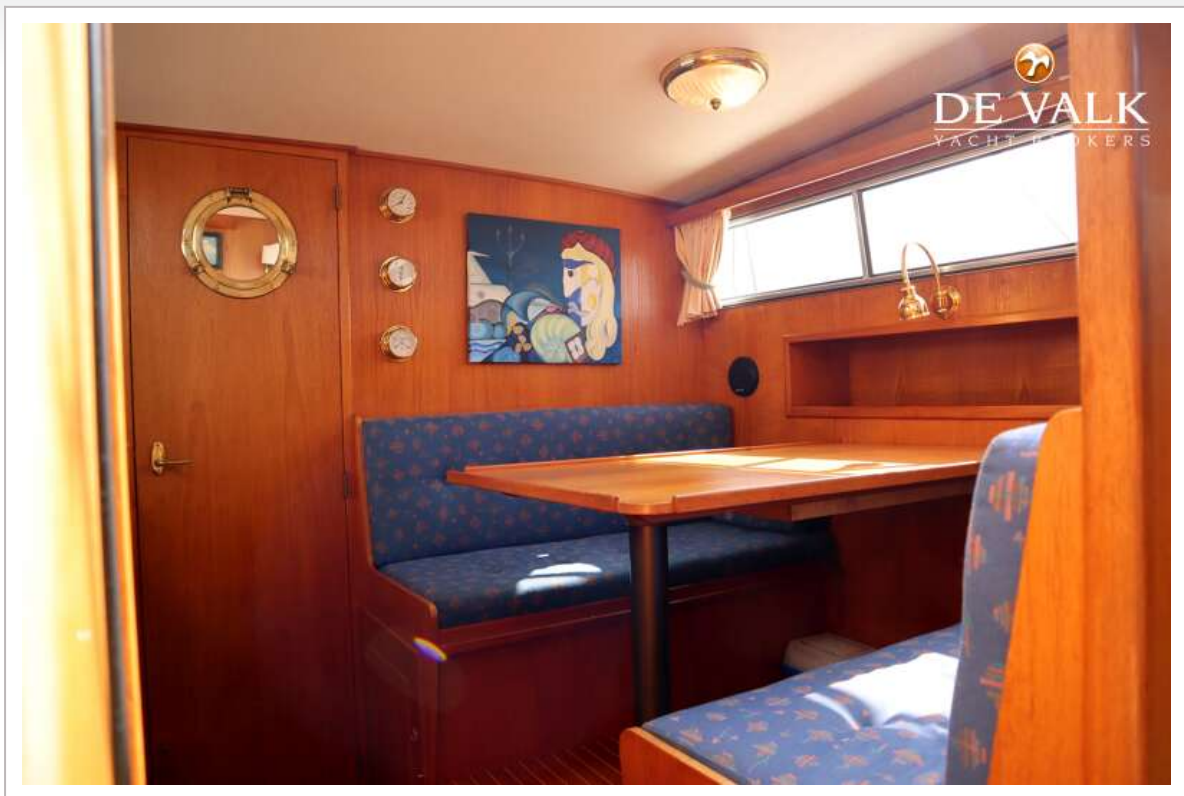
NEPTUNUS 106



NEPTUNUS 106



NEPTUNUS 106

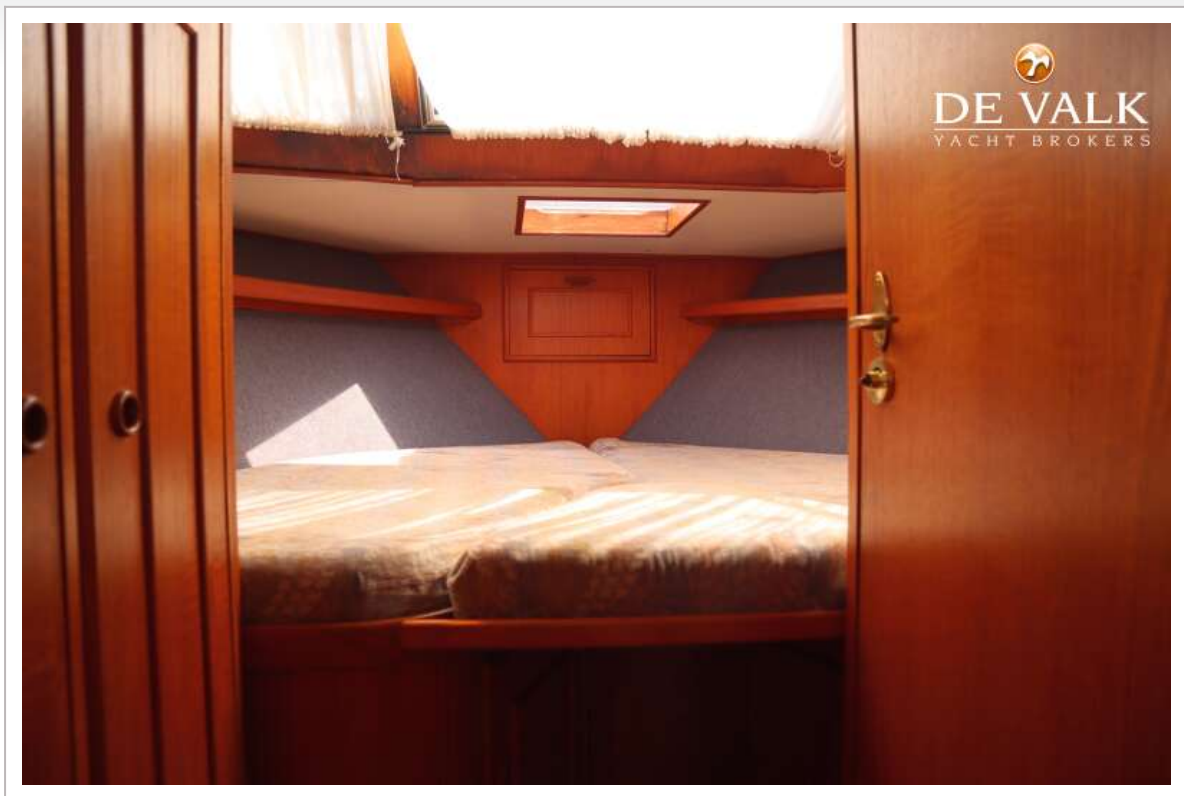


NEPTUNUS 106

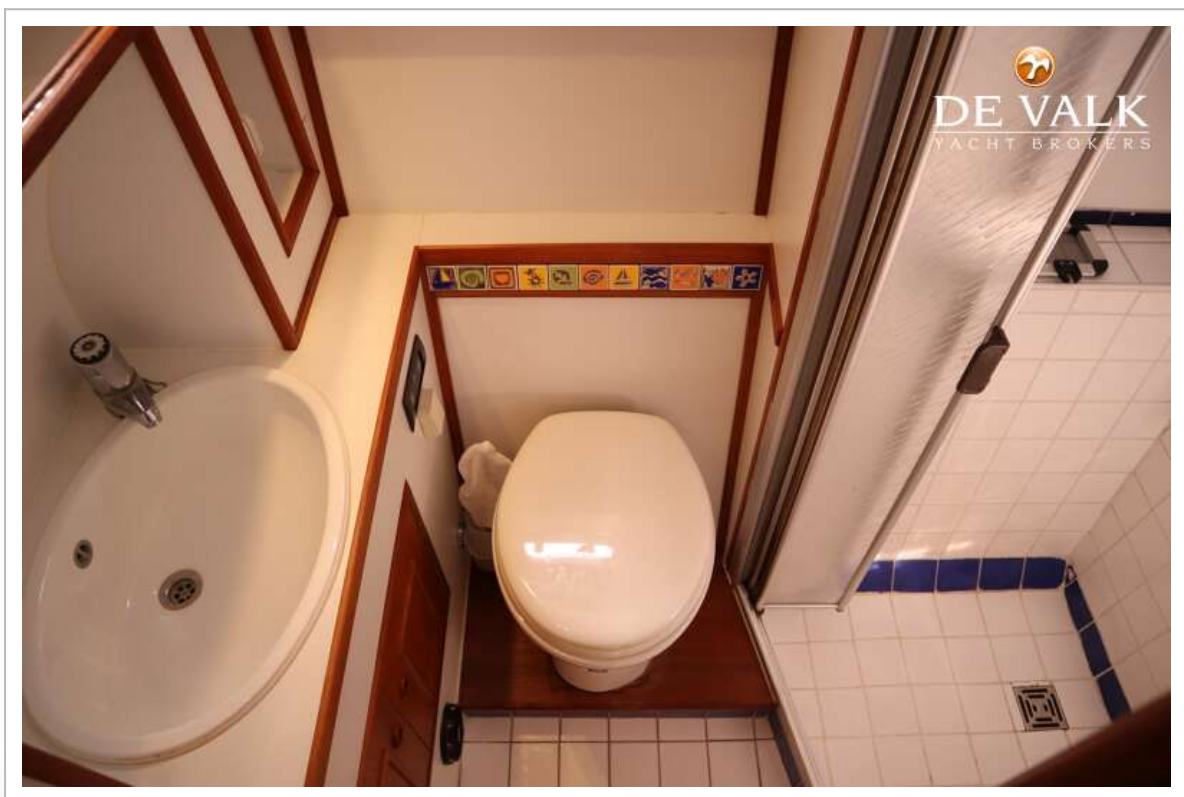
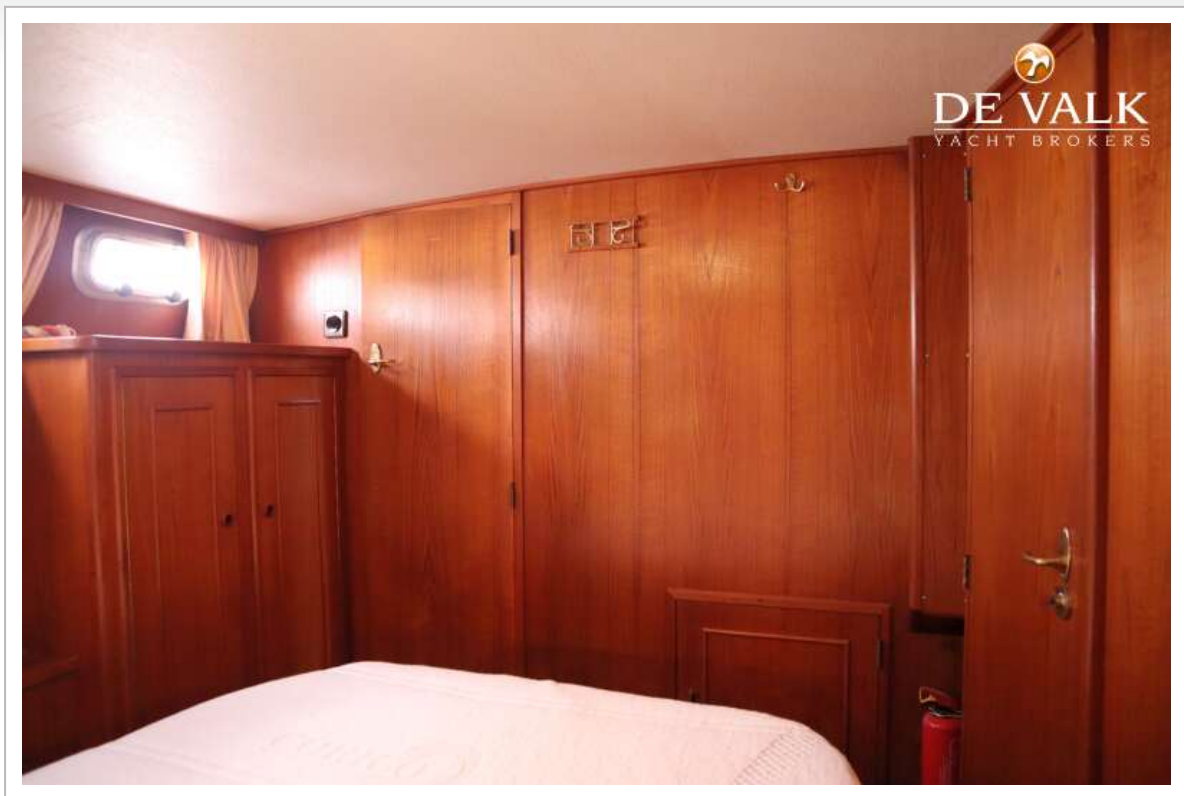


NEPTUNUS 106









NEPTUNUS 106



NEPTUNUS 106



