



DE VALK  
YACHT BROKERS



HALLBERG RASSY 42 F



DE VALK  
YACHT BROKERS

BROKERAGE | CHARTER | BERTHS | FINANCE | INSURANCE | YACHT MANAGEMENT

# HALLBERG RASSY 42 F

## BROKER'S COMMENTS

Hallberg Rassy has a phenomenal reputation for building safe, seaworthy and comfortable yachts, and this 42 F is no exception. This Hallberg Rassy is one of the finest and best maintained yachts we offer. Attention to detail and maintenance that the yacht has had by the current owners is really optimal! It is richly equipped with, for example, generator, up to date navigation equipment and protected cockpit, which is ideal for a long time on board and takes you to any destination.

*Johan Nooitgedagt*

## SPECIFICATIONS

|                     |                               |                |                        |
|---------------------|-------------------------------|----------------|------------------------|
| <b>Dimensions</b>   | 12.96 x 3.95 x 2.00 (m)       | <b>Builder</b> | Hallberg Rassy Varv AB |
| <b>Built</b>        | 1992                          | <b>Cabins</b>  | 2                      |
| <b>Material</b>     | GRP                           | <b>Berths</b>  | 6                      |
| <b>Engine(s)</b>    | 1 x Volvo Penta MD 31A diesel | <b>Hp/Kw</b>   | 64.00 (hp), 47.10 (kw) |
| <b>Asking price</b> | sold (VAT )                   | <b>Lying</b>   | at sales office        |

## CONTACT

|                     |   |                  |                       |
|---------------------|---|------------------|-----------------------|
| <b>Sales office</b> | De Valk Hindeloopen B.V.                    | <b>Telephone</b> | +31 514 52 40 00      |
| <b>Address</b>      | Oosterstrand 1<br>8713 JS Hindeloopen<br>NL | <b>E-mail</b>    | hindeloopen@devalk.nl |

## DISCLAIMER

These particulars are given in good faith as supplied but cannot be guaranteed.



# HALLBERG RASSY 42 F

## GENERAL

|                            |                          |
|----------------------------|--------------------------|
| Model                      | HALLBERG RASSY 42 F      |
| Type                       | sailing yacht            |
| LOA (m)                    | 12,96                    |
| LWL (m)                    | 10,35                    |
| Beam (m)                   | 3,95                     |
| Draft (m)                  | 2,00                     |
| Air draft (m)              | 20,00                    |
| Headroom (m)               | 2,00                     |
| Year built                 | 1992                     |
| Builder                    | Hallberg Rassy Varv AB   |
| Country                    | Sweden                   |
| Designer                   | Germán Frers             |
| Displacement (t)           | 12,5                     |
| Ballast (tonnes)           | lead 4,7                 |
| Hull material              | GRP                      |
| Hull colour                | white                    |
| Hull shape                 | round-bilged             |
| Keel type                  | fin keel with bulb       |
| Superstructure material    | GRP                      |
| Deck material              | GRP                      |
| Deck finish                | teak                     |
| Superstructure deck finish | teak                     |
| Cockpit deck finish        | teak                     |
| Antifouling (year)         | 2022                     |
| Dorades                    | 4x                       |
| Window frame               | aluminium                |
| Window material            | tempered glass           |
| Deckhatch                  | 4x                       |
| Portholes                  | yes                      |
| Fuel tank (litre)          | stainless steel 415 ltr. |



# HALLBERG RASSY 42 F

|                              |   |
|------------------------------|---|
| Freshwater tank (litre)      | stainless steel 680 ltr. in 2 tanks                       |
| Level indicator (freshwater) | 2021  |
| Blackwater tank (litre)      | stainless steel 2x 40 ltr.                                |
| Blackwater tank extraction   | deck extraction + uw line                                 |
| Wheel steering               | cable steering  |
| Emergency tiller             | yes   |
| Extra info                   | Blue striping (waterline, hull and deck line) new in 2020 |
| Extra info                   | Lloyds Construction cert: 90T250421                       |

## ACCOMMODATION

|                       |  |
|-----------------------|--|
| Cabins                | 2  |
| Berths                | 6  |
| Interior              | mahogany   |
| Floor                 | teak and holly   |
| Open cockpit          | yes  |
| Saloon                | yes  |
| Headroom saloon (m)   | 2.00 mtr.  |
| Heating               | diesel ducted hot air 2020 Webasto, can be controlled by app |
| Navigation center     | yes  |
| Chart table           | yes  |
| Aft Cabin             | Owners cabin   |
| Galley                | yes  |
| Countertop            | wood   |
| Sink                  | stainless steel  |
| Cooker                | calor gas Eno Marine   |
| Oven                  | Eno Marine   |
| Gas alarm             | DSI Truma  |
| Microwave             | Atag   |
| Fridge                | Frigomatic air cooled  |
| Hot water system      | 220V + engine 2014 Boiler Isotemp 40 ltr.                    |
| Water pressure system | electrical 2020  |



# HALLBERG RASSY 42 F

|                         |                                    |
|-------------------------|------------------------------------|
| Manual and/or foot pump | yes                                |
| Owners cabin            | double bed                         |
| Bed length (m)          | 1,90 mtr. x 2,80   mattresses 2020 |
| Wardrobe                | hanging and shelves                |
| Bathroom                | en suite                           |
| Toilet                  | en suite                           |
| Toilet system           | electric 2018                      |
| Wash basin              | in the bathroom                    |
| Shower                  | en suite                           |
| Guest cabin 1           | v-bed                              |
| Bed length (m)          | 1,90 mtr.                          |
| Wardrobe                | hanging and shelves                |
| Bathroom                | en suite                           |
| Toilet                  | Jabsco                             |
| Toilet system           | manual                             |
| Wash basin              | in the bathroom                    |
| Shower                  | en suite                           |

## MACHINERY

|                       |                           |
|-----------------------|---------------------------|
| No of engines         | 1                         |
| Make                  | Volvo Penta               |
| Type                  | MD 31A                    |
| HP                    | 64                        |
| kW                    | 47.10                     |
| Fuel                  | diesel                    |
| Year installed        | 1992                      |
| Maximum speed (kn)    | 8                         |
| Cruising speed (kn)   | 6,5                       |
| Consumption (l/hr)    | 4                         |
| Engine hours          | 1950                      |
| Engine cooling system | freshwater heat exchanger |



# HALLBERG RASSY 42 F

|                          |  |
|--------------------------|--|
| Drive                    | shaft                                  |
| Shaft seal               | yes                                    |
| Engine controls          | bowden cable                           |
| Gearbox                  | mechanical                             |
| Bowthruster              | electric Sidepower                     |
| Propeller type           | 2017 Max Prop direblads                |
| Propeller blades         | 3                                      |
| Propeller shaft material | stainless steel                        |
| Shaft lubrication        | water                                  |
| Manual bilge pump        | yes                                    |
| Electric bilge pump      | yes                                    |
| Electrical installation  | 12 / 200 volt                          |
| Generator                | silent separator   3,5 KW Fisher Panda |
| Start battery            | 1x 140Ah   Semitraction   2021         |
| Service battery          | 4 x 140 Ah   Semitraction   2021       |
| Battery charger/inverter | Victron Atlas Combi 12/1500/50         |
| Solar panel              | Can be installed for the winter        |
| Diode battery combiners  | yes                                    |
| Shorepower               | with cable                             |

## NAVIGATION

|                       |                             |
|-----------------------|-----------------------------|
| Compass               | Suunto                      |
| Electric compass      | Autohelm ST50               |
| Multi control display | B&G Network Data            |
| Depth sounder         | B&G Network Depth           |
| Log                   | B&G Network Speed           |
| Windset               | B&G Network Wind            |
| VHF                   | 2020 Icom I-M506 + handheld |
| Autopilot             | Autohelm 7000               |
| Radar                 | Raymarine                   |
| GPS                   | B&G Network Nav             |



|                            |  |
|----------------------------|--|
| <b>Radar/GPS/plotter</b>   | Raymarine C120 with own GPS and radar overlay. 2010          |
| <b>Navtex</b>              | 2021 Navtex BT-3   |
| <b>Electronic chart(s)</b> | Navionics  |
| <b>AIS transponder</b>     | yes  |
| <b>Navigation lights</b>   | yes  |
| <b>Searchlight</b>         | Hand Lamp  |
| <b>Extra info</b>          | All equipment integrated in Stentec-winGPS + outdoor monitor |

## EQUIPMENT

|                                   |                    |
|-----------------------------------|--------------------|
| <b>Fixed windscreen</b>           | yes                |
| <b>Sprayhood</b>                  | yes                |
| <b>Cockpit cover</b>              | yes                |
| <b>Sun awning</b>                 | yes                |
| <b>Cockpit table</b>              | yes                |
| <b>Boarding ladder</b>            | stainless steel    |
| <b>Deck shower</b>                | yes                |
| <b>Anchor</b>                     | Bruce   20kg       |
| <b>Anchor chain</b>               | 10mm               |
| <b>Anchor 2</b>                   | 15kg               |
| <b>Anchor chain</b>               | 5 mtr.chain + rope |
| <b>Windlass</b>                   | electrical         |
| <b>Capstan</b>                    | yes                |
| <b>Sea railing</b>                | wire               |
| <b>Grab rail (superstructure)</b> | teak               |
| <b>Railing side opening gates</b> | yes                |
| <b>Pushpit</b>                    | yes                |
| <b>Pulpit</b>                     | yes                |
| <b>Safety lines on deck</b>       | yes                |
| <b>Radar reflector</b>            | yes                |
| <b>Fenders</b>                    | yes                |
| <b>Mooring lines</b>              | New 2020           |



# HALLBERG RASSY 42 F

|                   |                     |
|-------------------|---------------------|
| Spare parts       | yes                 |
| Alarm system      | Bosch               |
| TV                | yes                 |
| TV receiver       | Through Chrome Cast |
| Radio             | Fusion MS-RA70N     |
| Cockpit speakers  | yes                 |
| Speakers in salon | yes                 |
| Clock - barometer | yes                 |
| Fire extinguisher | 2x                  |

## RIGGING

|                         |                                |
|-------------------------|--------------------------------|
| Rigging                 | sloop-cutter                   |
| Standing rigging        | wire                           |
| Brand mast              | Seldén                         |
| Material mast           | aluminium                      |
| Spreaders               | 2 pair                         |
| Mainsail                | 40m2 De Vries                  |
| Stoway mast             | yes                            |
| Cutterstay              | Removable                      |
| High aspect             | 27 m²                          |
| Genoa                   | Quantum Sails   2022           |
| Genoa furler            | yes                            |
| Gennaker                | 120 m² + Snuffer               |
| Staysail                | 12 m²                          |
| Removable innerforestay | yes                            |
| Reefing System          | main in-mast furling           |
| Backstay adjuster       | mechanical                     |
| Boomvang                | mechanical and tackle   Seldén |
| Primary sheet winch     | 2x Lewmar 40                   |
| Genoa sheetwinches      | 2x Lewmar 56                   |
| Halyard winches         | 2x Lewmar 40 on mast           |





# HALLBERG RASSY 42 F

**Multifunctional winches**

1x Lewmar 40

**Spi-pole**

aluminium

**Extra info**

Preventer (Bulletalie), removable bowsprit, replaceable with additional anchor

**Extra info**

halyards, sheets and mooring lines new 2020



# HALLBERG RASSY 42 F

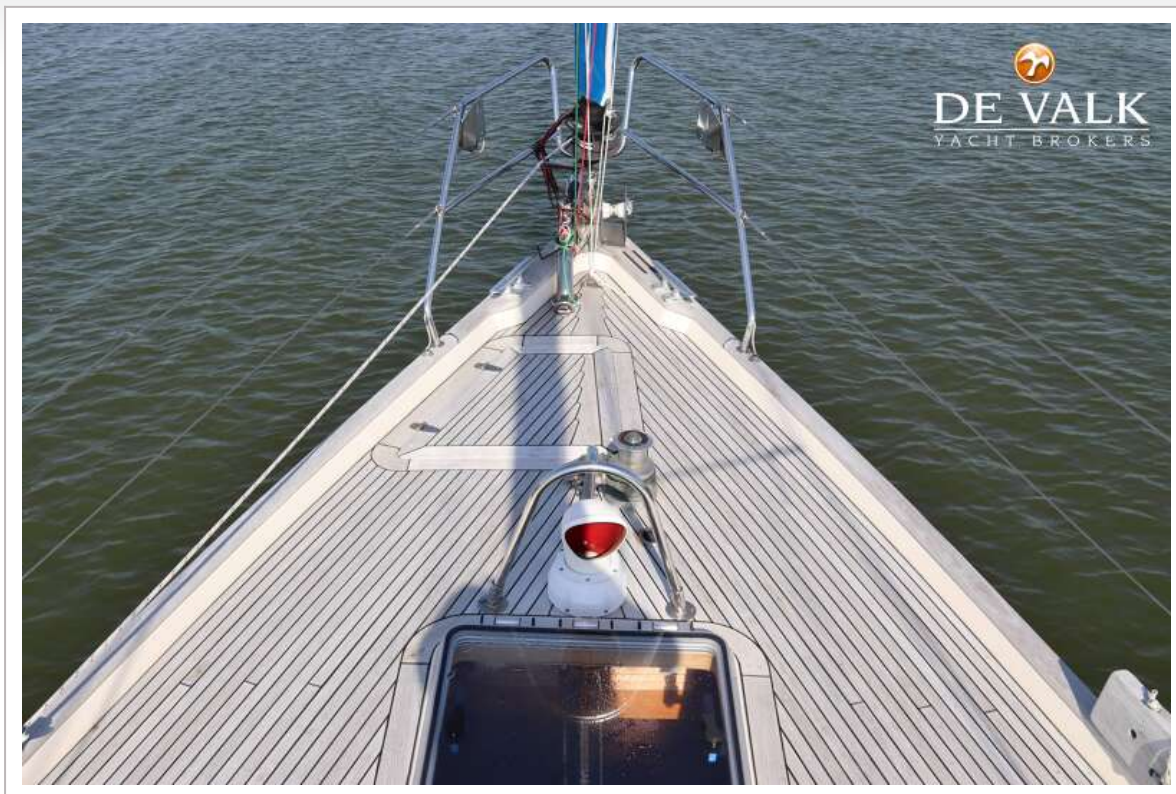


# HALLBERG RASSY 42 F

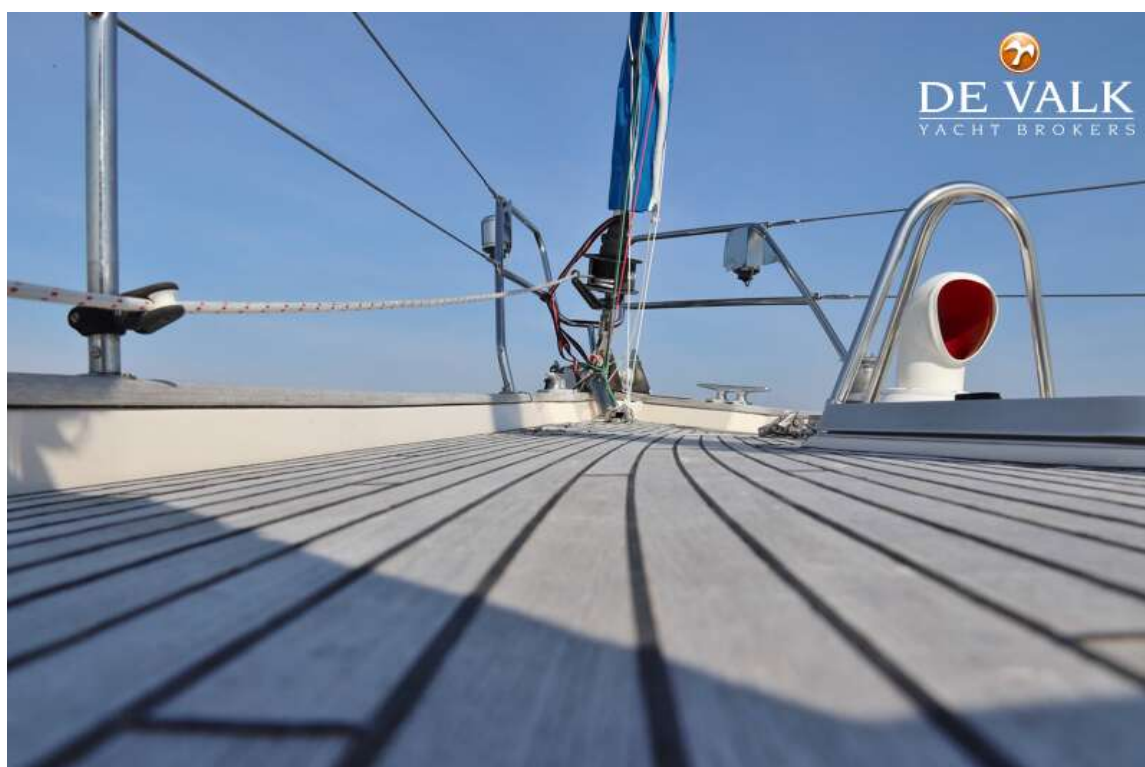




# HALLBERG RASSY 42 F



# HALLBERG RASSY 42 F





# HALLBERG RASSY 42 F



# HALLBERG RASSY 42 F





# HALLBERG RASSY 42 F

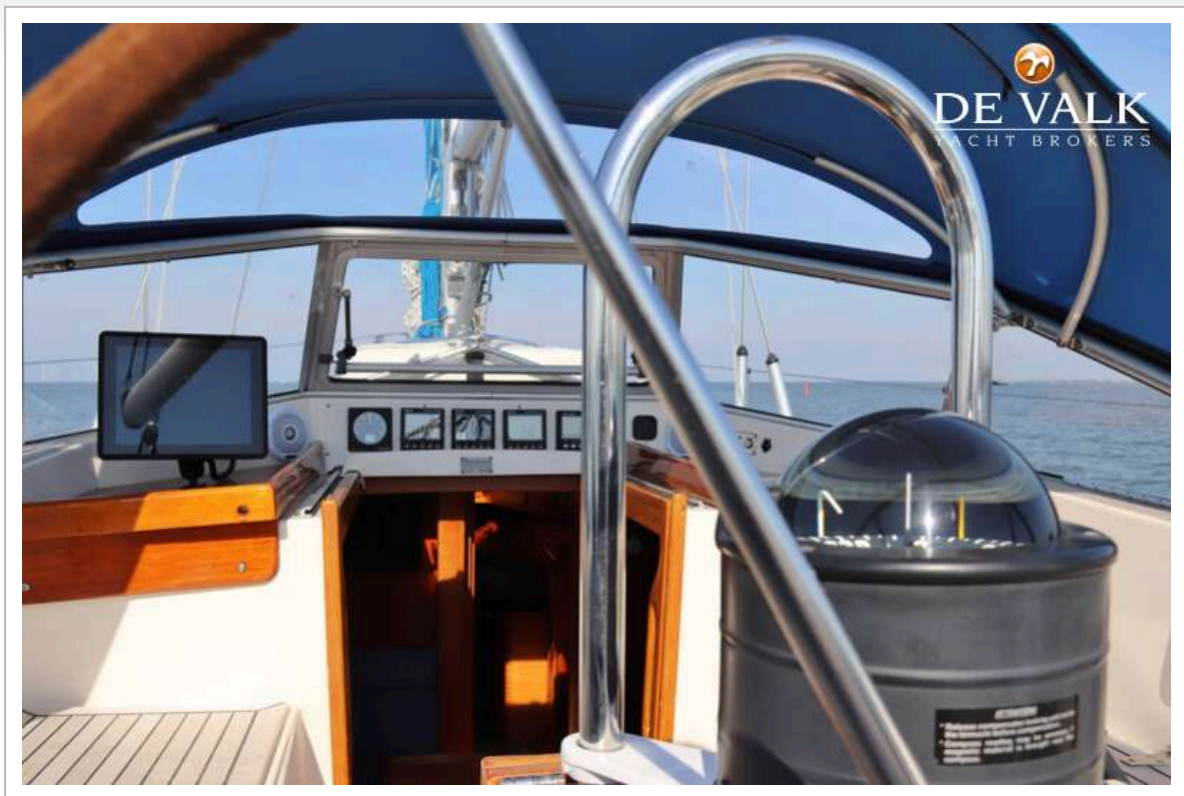




# HALLBERG RASSY 42 F



# HALLBERG RASSY 42 F





# HALLBERG RASSY 42 F



# HALLBERG RASSY 42 F

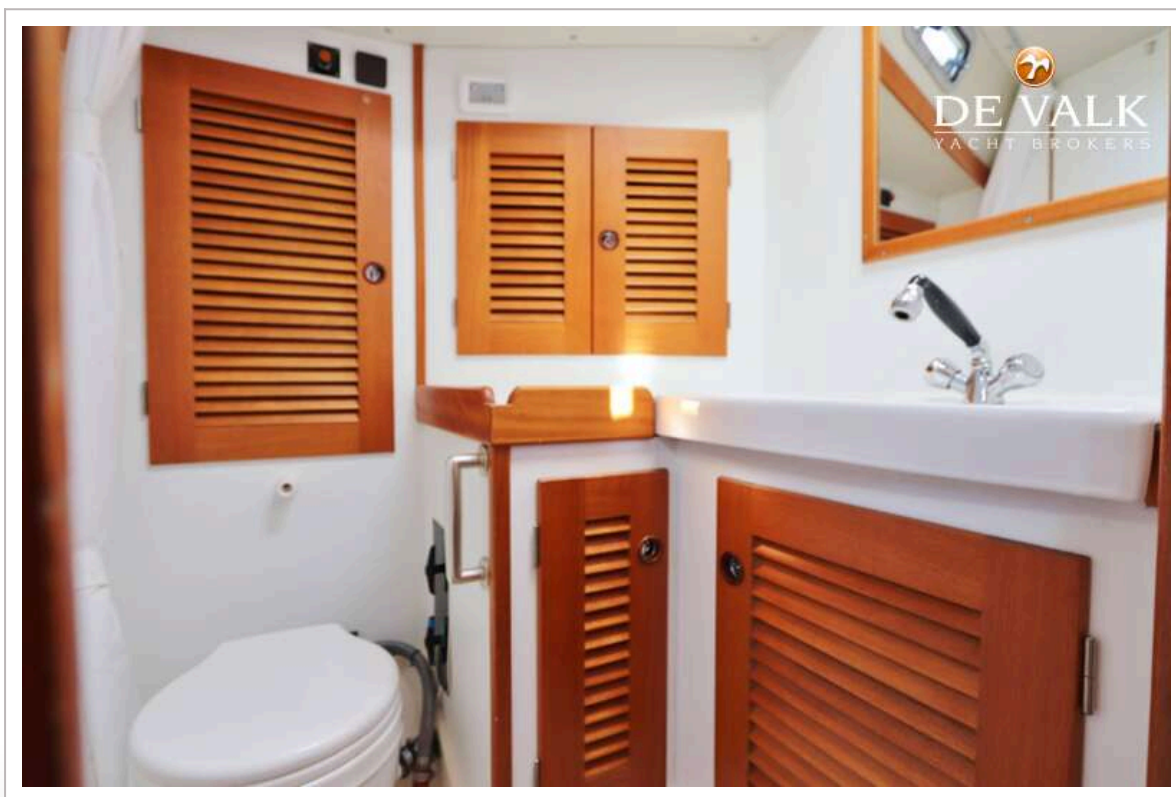
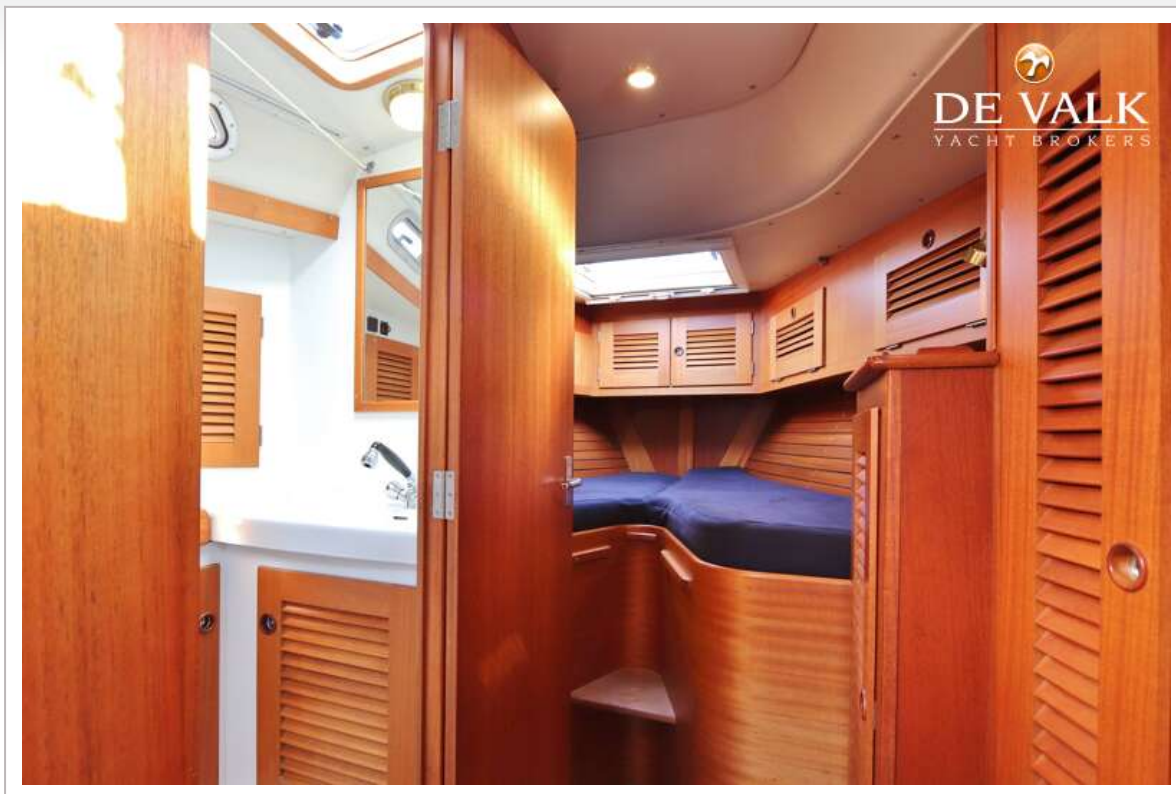




# HALLBERG RASSY 42 F

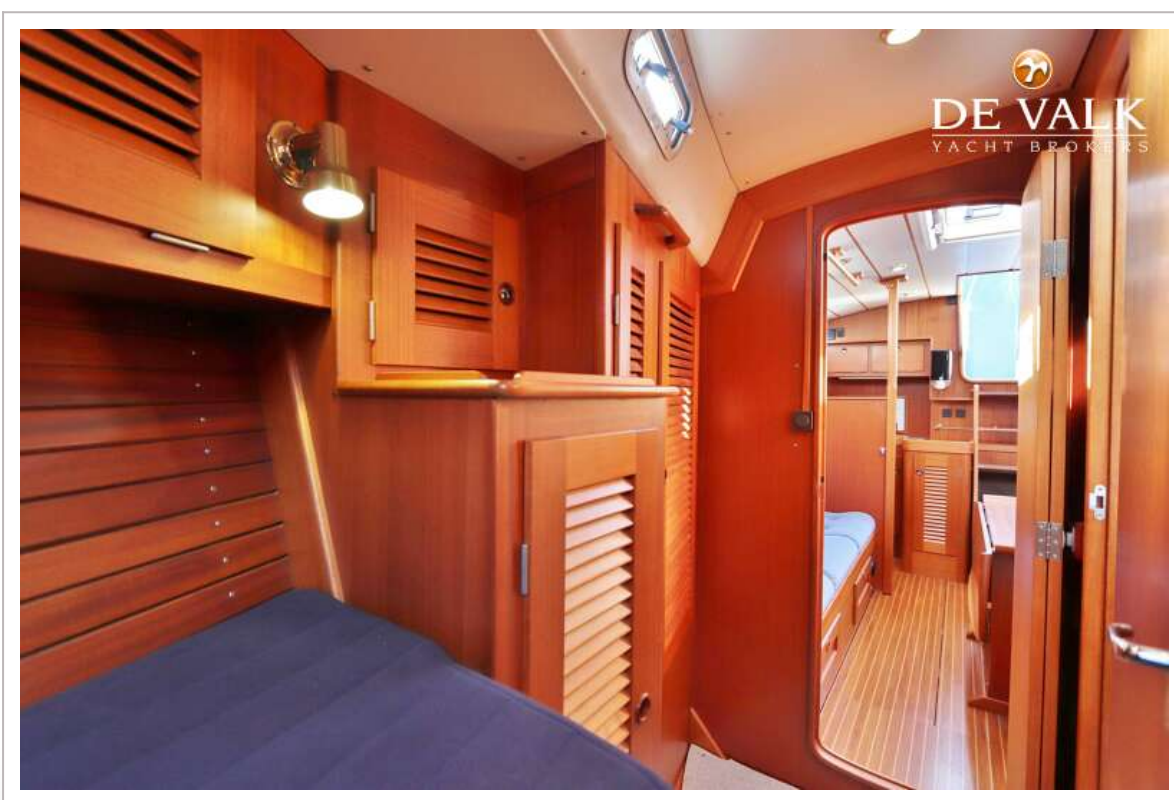
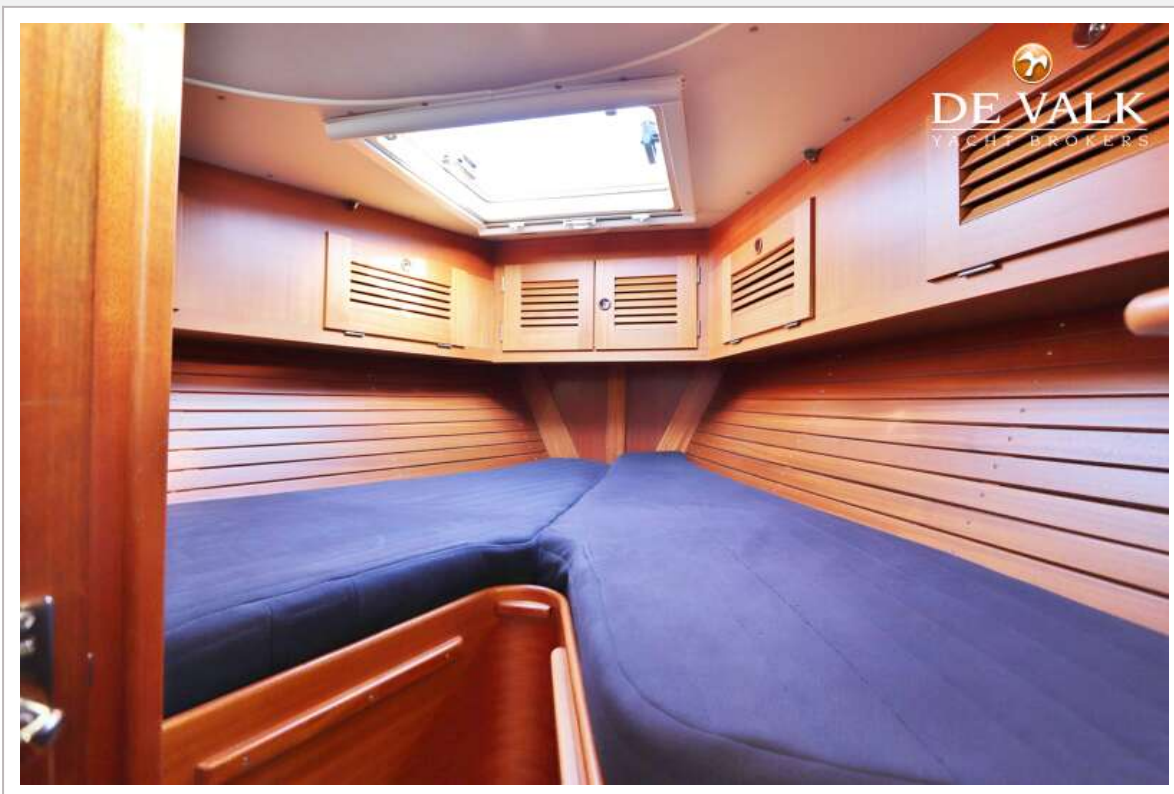


# HALLBERG RASSY 42 F

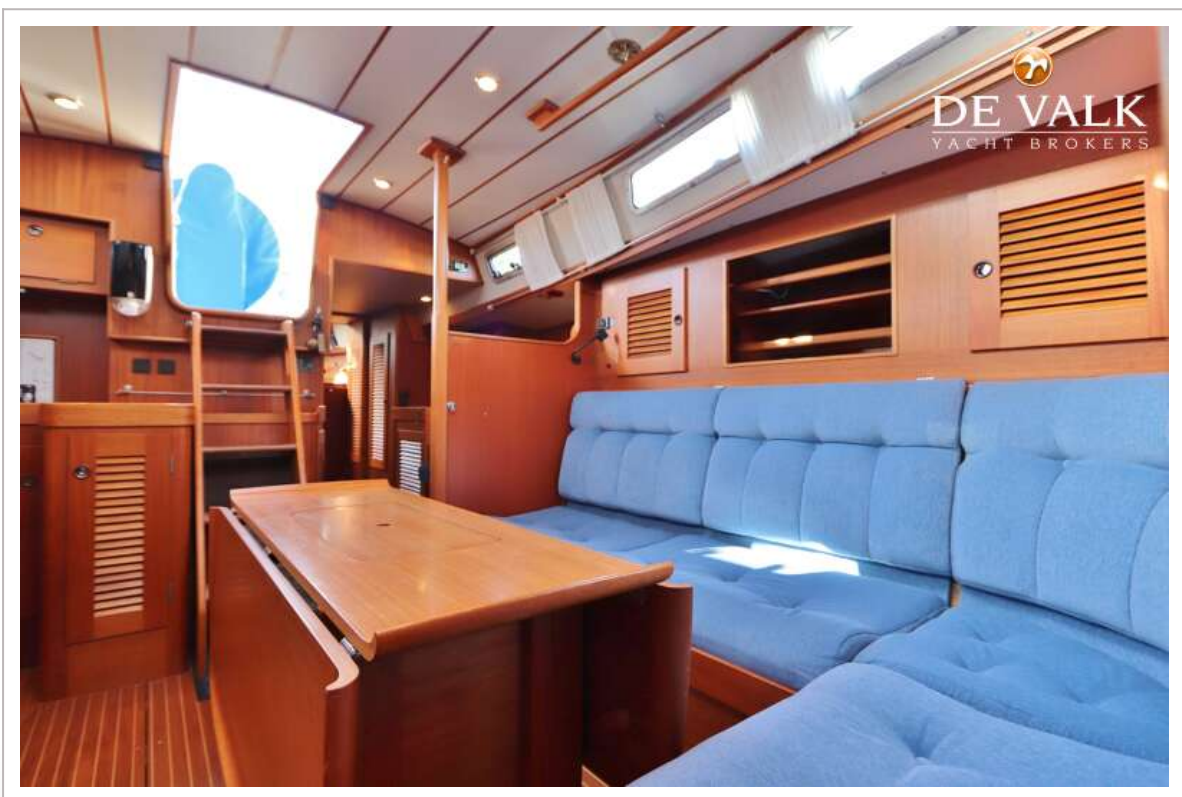




# HALLBERG RASSY 42 F



# HALLBERG RASSY 42 F





# HALLBERG RASSY 42 F

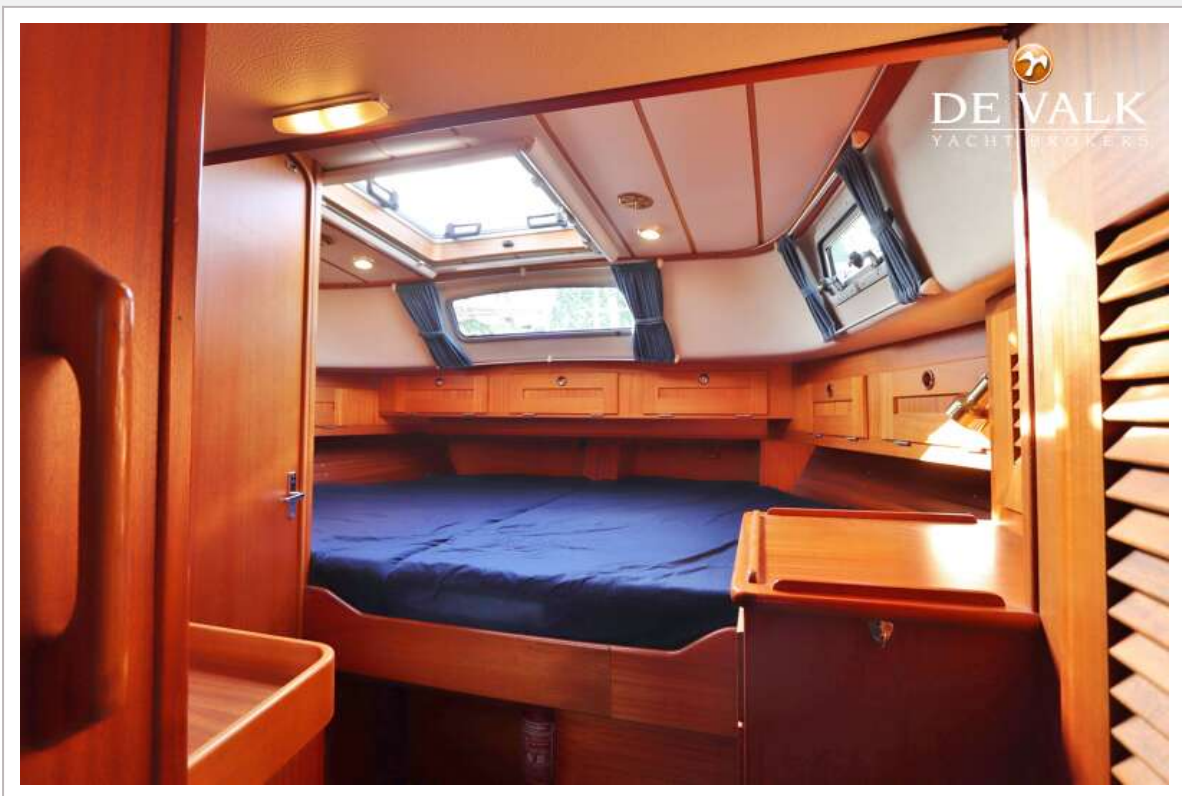


# HALLBERG RASSY 42 F





# HALLBERG RASSY 42 F



# HALLBERG RASSY 42 F

