



DE VALK  
YACHT BROKERS



Archive Pictures

## GRAND BANKS 42 MOTORYACHT



DE VALK  
YACHT BROKERS

# GRAND BANKS 42 MOTORYACHT

## BROKER'S COMMENTS

All time Classic from the famous Grand Banks yard. The 42 Classic model is the ultimate cruiser trawler. This particular yacht is in very clean and good order, giving you directly the good atmosphere and feeling once on board. Very well technically maintained. Teak on flybridge and front deck need attention, but that is about it. Perfect live a board yacht. Offered at a very realistic price, ready turn key for the coming summer. Viewings are highly recommended.

*Diego Cerasi*

## SPECIFICATIONS

<b>Dimensions</b>	12.00 x 4.14 x 1.27 (m)	<b>Builder</b>	American Marine
<b>Built</b>	1987	<b>Cabins</b>	3
<b>Material</b>	GRP	<b>Berths</b>	7
<b>Engine(s)</b>	2 x Ford Lehman diesel	<b>Hp/Kw</b>	2 x 135.00 (hp), 99.22 (kw)
<b>Asking price</b>	sold (VAT )	<b>Lying</b>	at sales office

## CONTACT

<b>Sales office</b>	De Valk Palma	<b>Telephone</b>	+34 971 40 29 11
<b>Address</b>	Port. Cala Nova, Avda. Joan Miro, 327 07015 Palma de Mallorca ES	<b>E-mail</b>	palma@devalk.nl

## DISCLAIMER

These particulars are given in good faith as supplied but cannot be guaranteed.



# GRAND BANKS 42 MOTORYACHT

## GENERAL

Model	GRAND BANKS 42 MOTORYACHT
Type	motor yacht
LOA (m)	12,00
Beam (m)	4,14
Draft (m)	1,27
Year built	1987
Builder	American Marine
Displacement (t)	15,42
Hull material	GRP
Hull colour	white
Deck finish	teak
Fuel tank (litre)	2200
Freshwater tank (litre)	
Blackwater tank (litre)	

## ACCOMMODATION

Cabins	3
Berths	7
Layout	Flybridge
Air-conditioning	reverse cycle airco
Cooker	calor gas
Oven	yes
Fridge	yes
Hot water system	
Water pressure system	
Owners cabin	double bed
Wardrobe	drawers
Bathroom	en suite
Toilet	en suite
Toilet system	electric



# GRAND BANKS 42 MOTORYACHT

Shower	en suite
Guest cabin 1	v-bed
Bathroom	shared
Toilet	shared
Toilet system	electric
Shower	shared
Guest cabin 2	single bed
Bathroom	shared
Toilet	shared
Toilet system	electric
Shower	shared
Central vacuum cleaner	yes

## MACHINERY

No of engines	2
Make	Ford Lehman
HP	135
kW	99,22
Fuel	diesel
Drive	shaft
Batteries	6x
Battery charger	yes

## NAVIGATION

Compass	yes
Compass on flybridge	yes
VHF	yes
Autopilot	yes
GPS	yes



## EQUIPMENT

Bimini	yes
Bathing platform	yes
Deck shower	yes
Anchor	
Anchor chain	yes
Windlass	electrical
Life raft	
Lifejackets	yes



# GRAND BANKS 42 MOTORYACHT





# GRAND BANKS 42 MOTORYACHT



# GRAND BANKS 42 MOTORYACHT



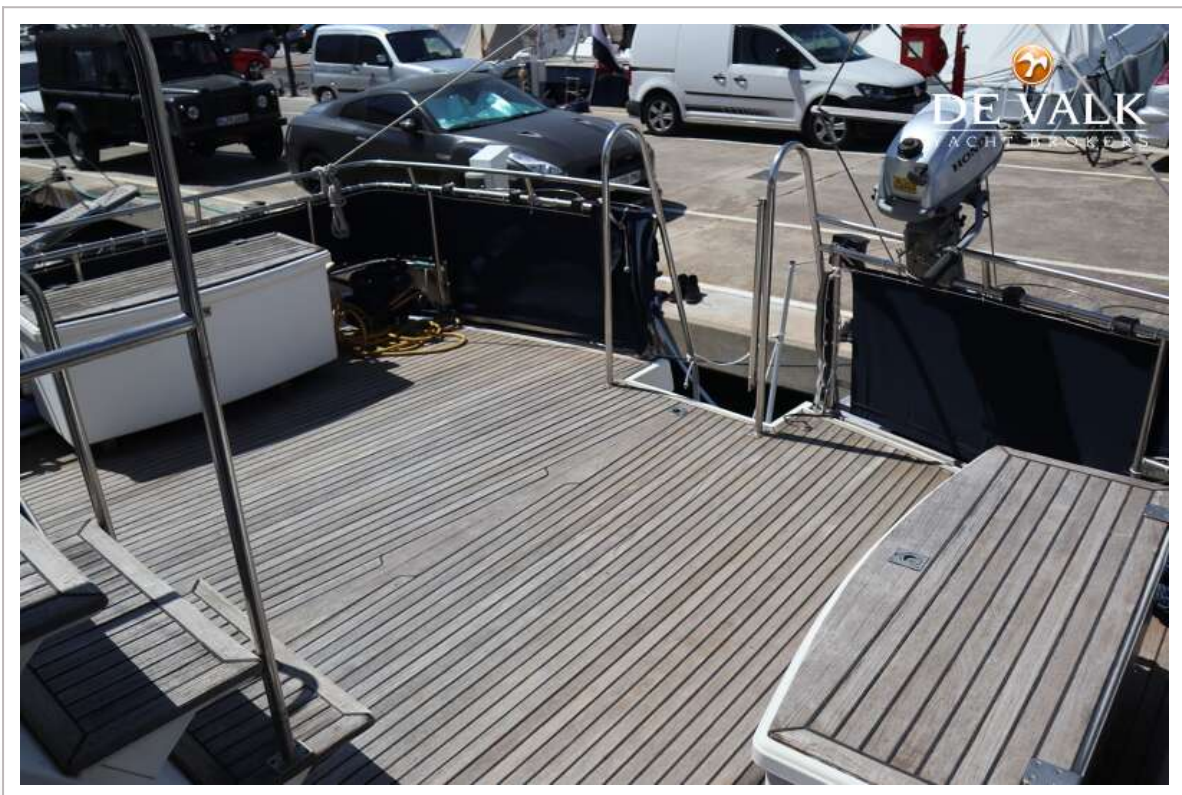
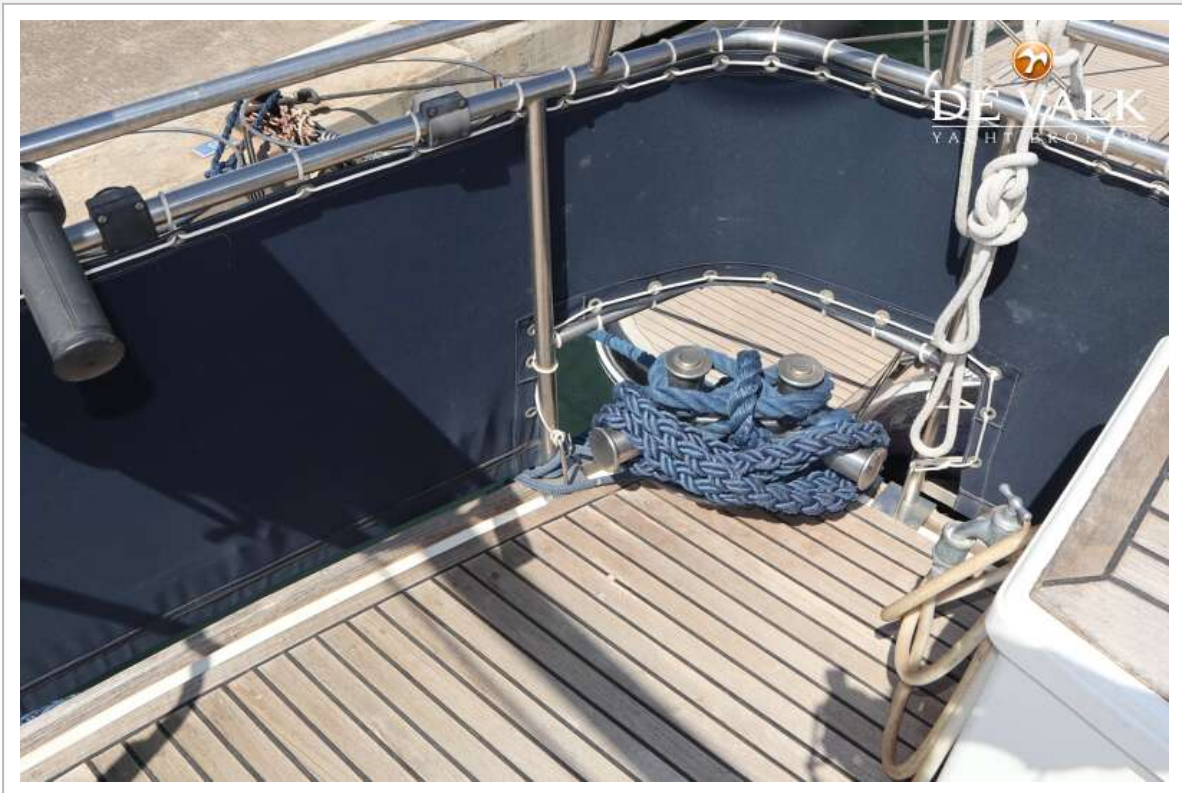


# GRAND BANKS 42 MOTORYACHT





# GRAND BANKS 42 MOTORYACHT





# GRAND BANKS 42 MOTORYACHT



# GRAND BANKS 42 MOTORYACHT

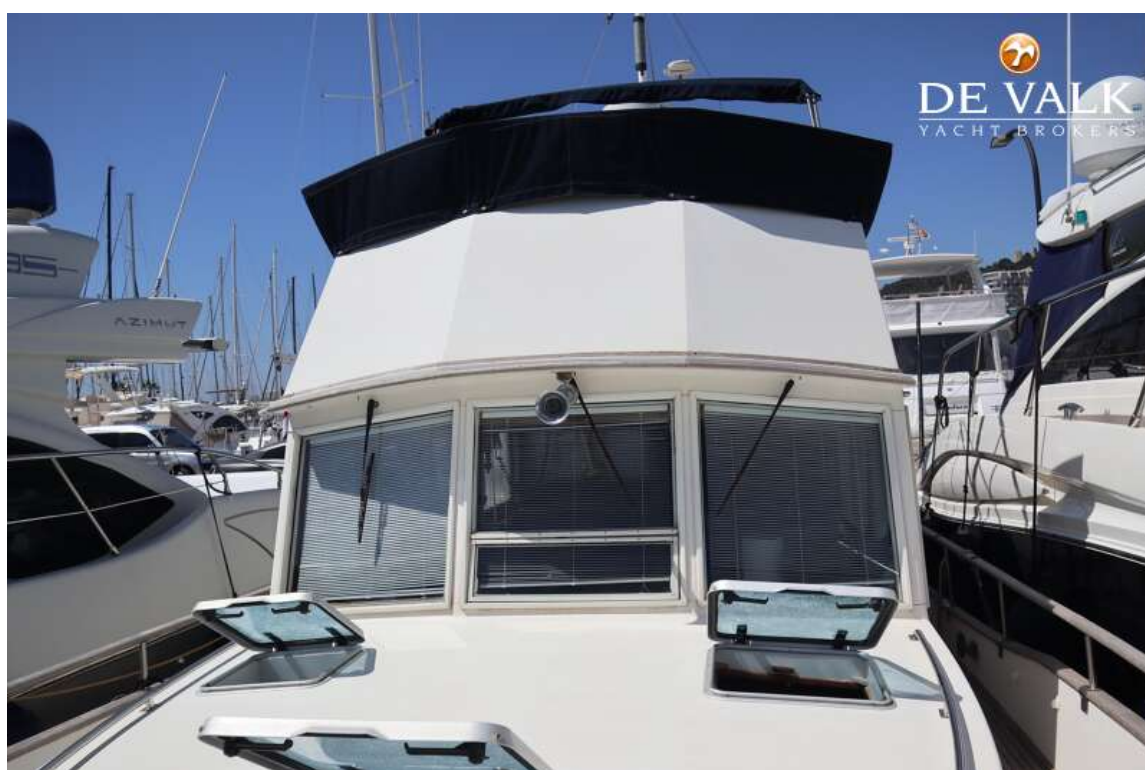




# GRAND BANKS 42 MOTORYACHT

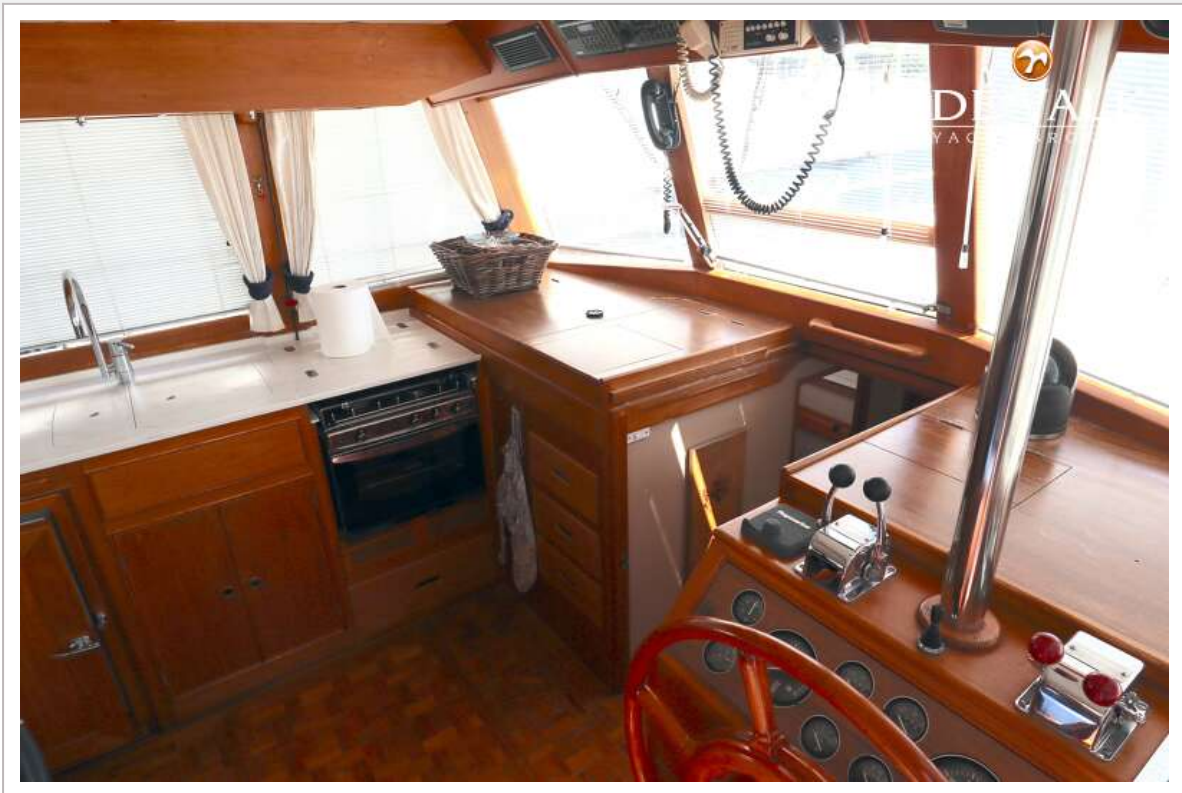


# GRAND BANKS 42 MOTORYACHT

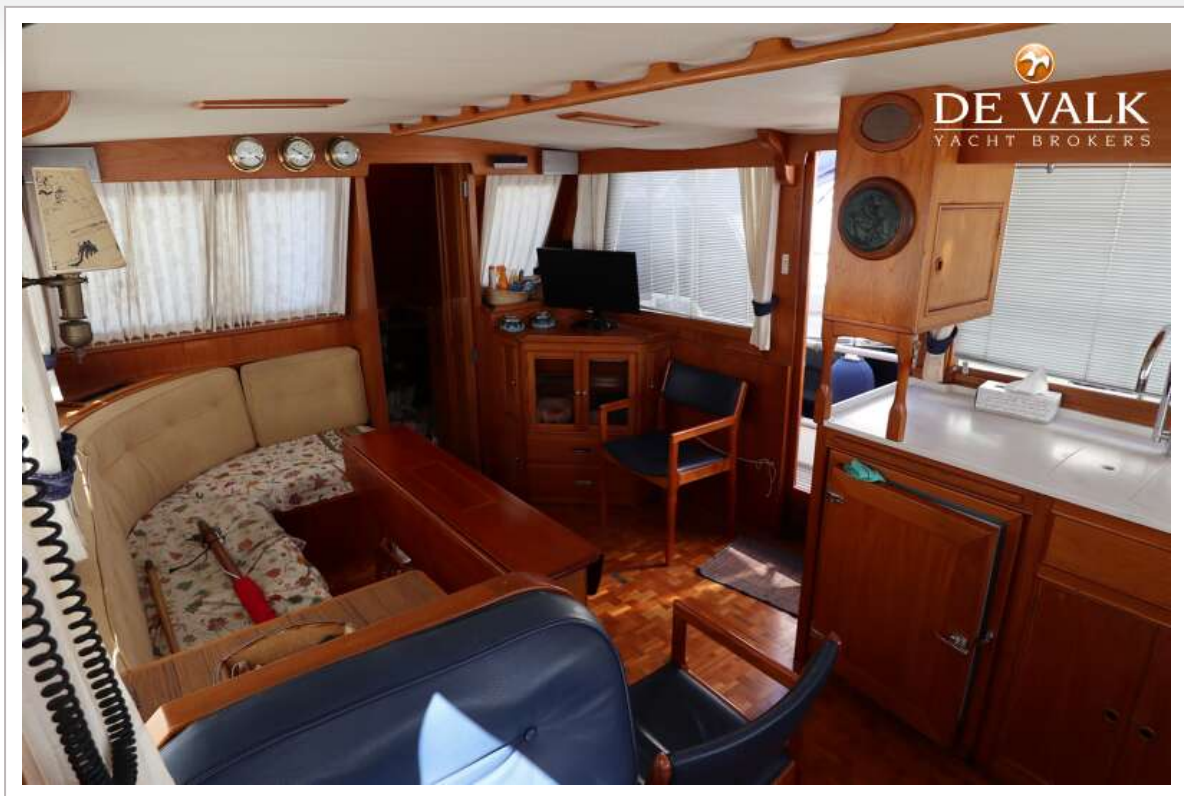




# GRAND BANKS 42 MOTORYACHT



# GRAND BANKS 42 MOTORYACHT

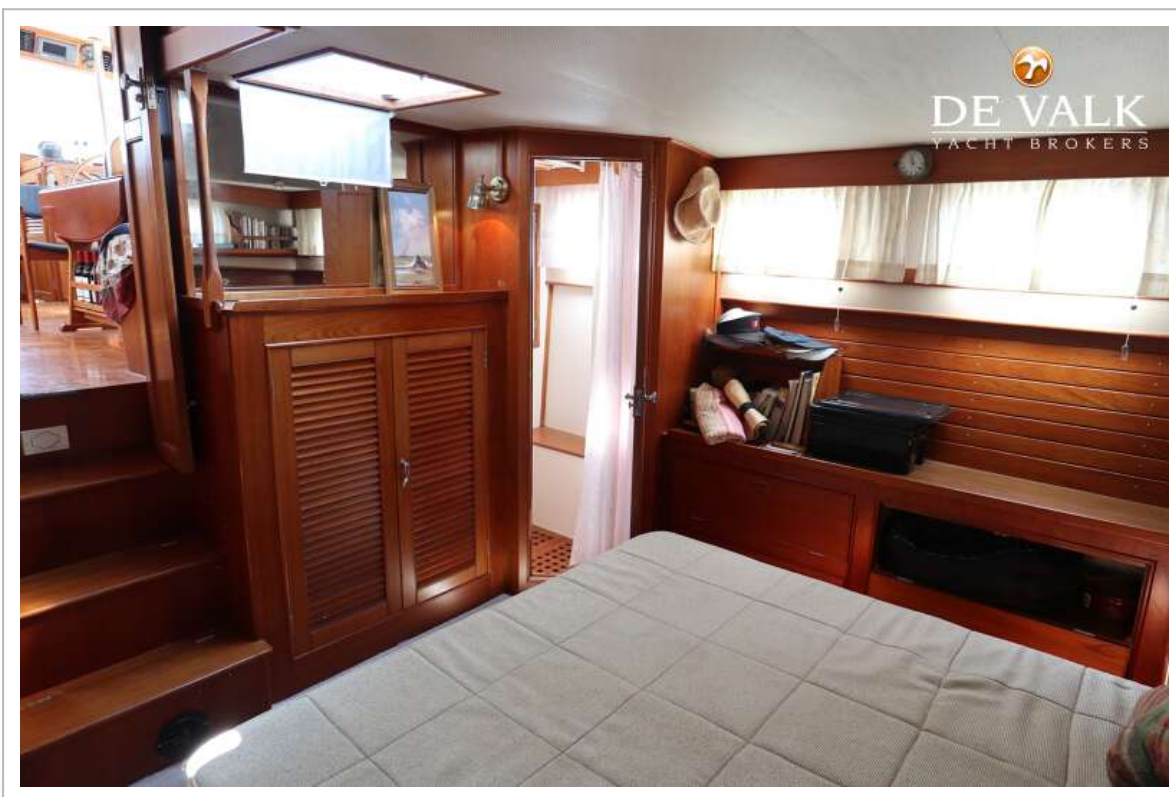




# GRAND BANKS 42 MOTORYACHT

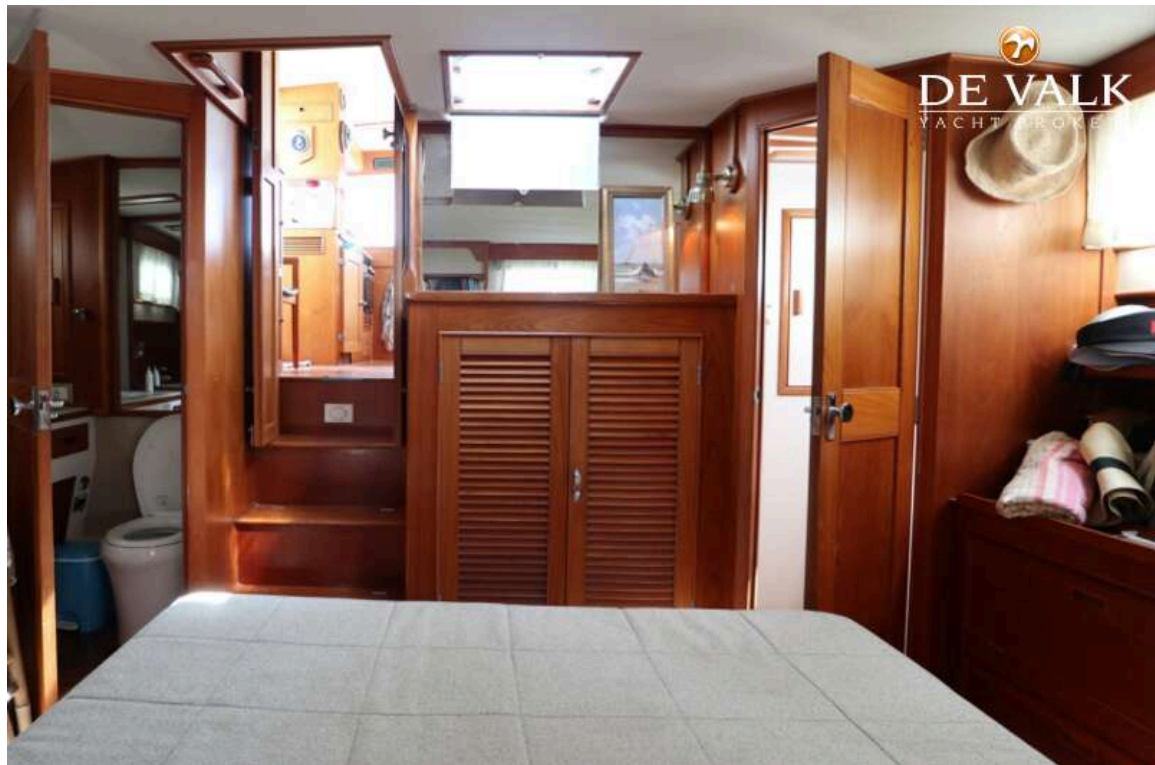


# GRAND BANKS 42 MOTORYACHT





# GRAND BANKS 42 MOTORYACHT

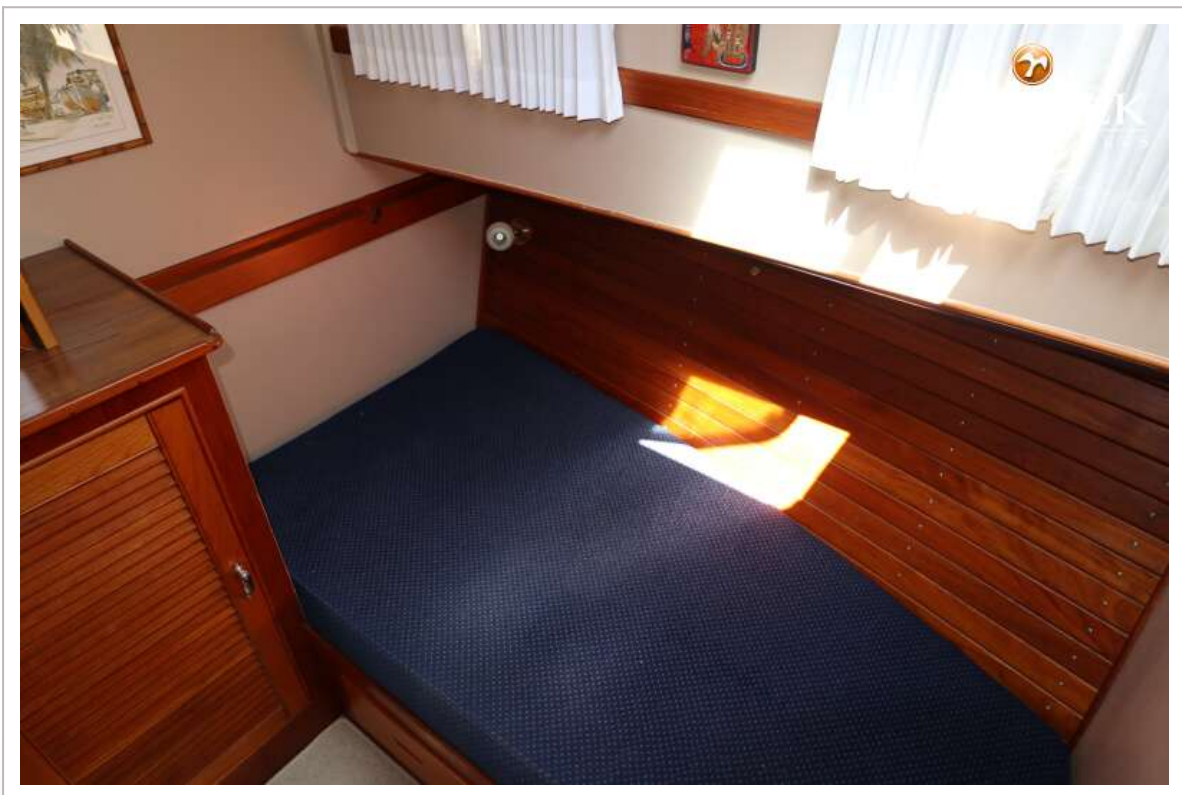
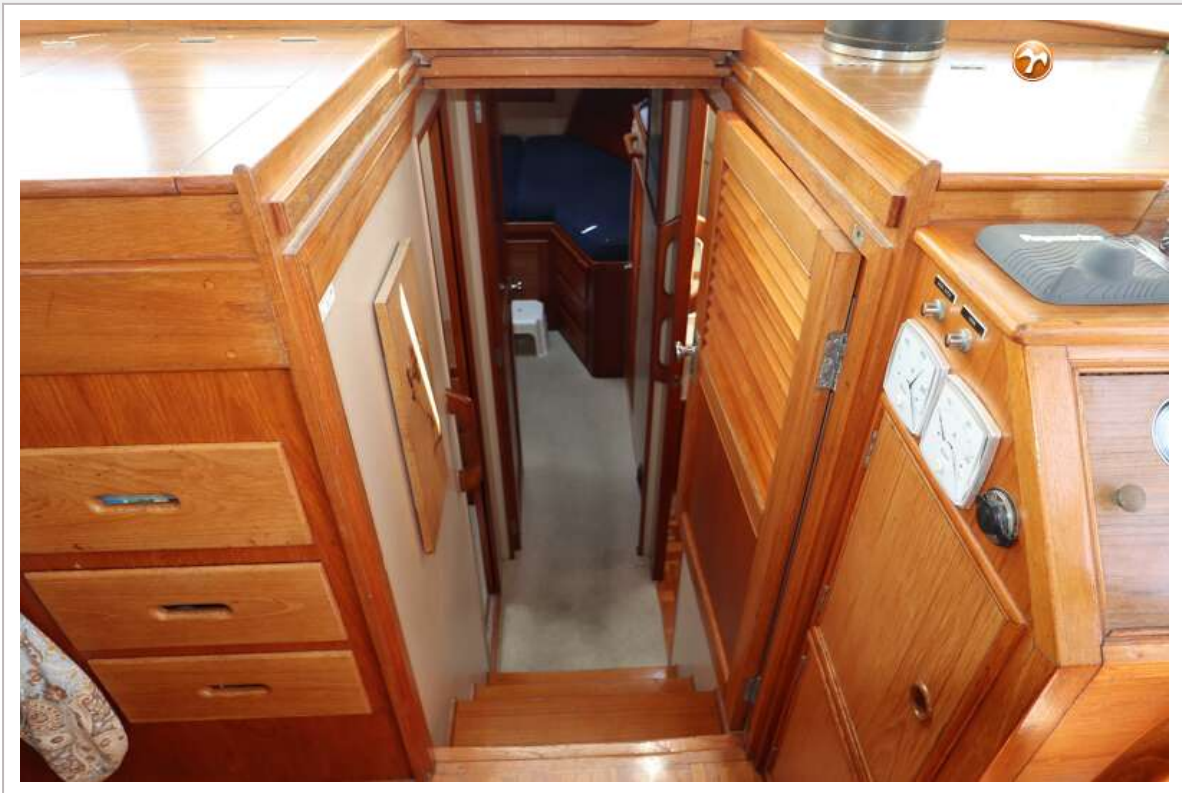


# GRAND BANKS 42 MOTORYACHT

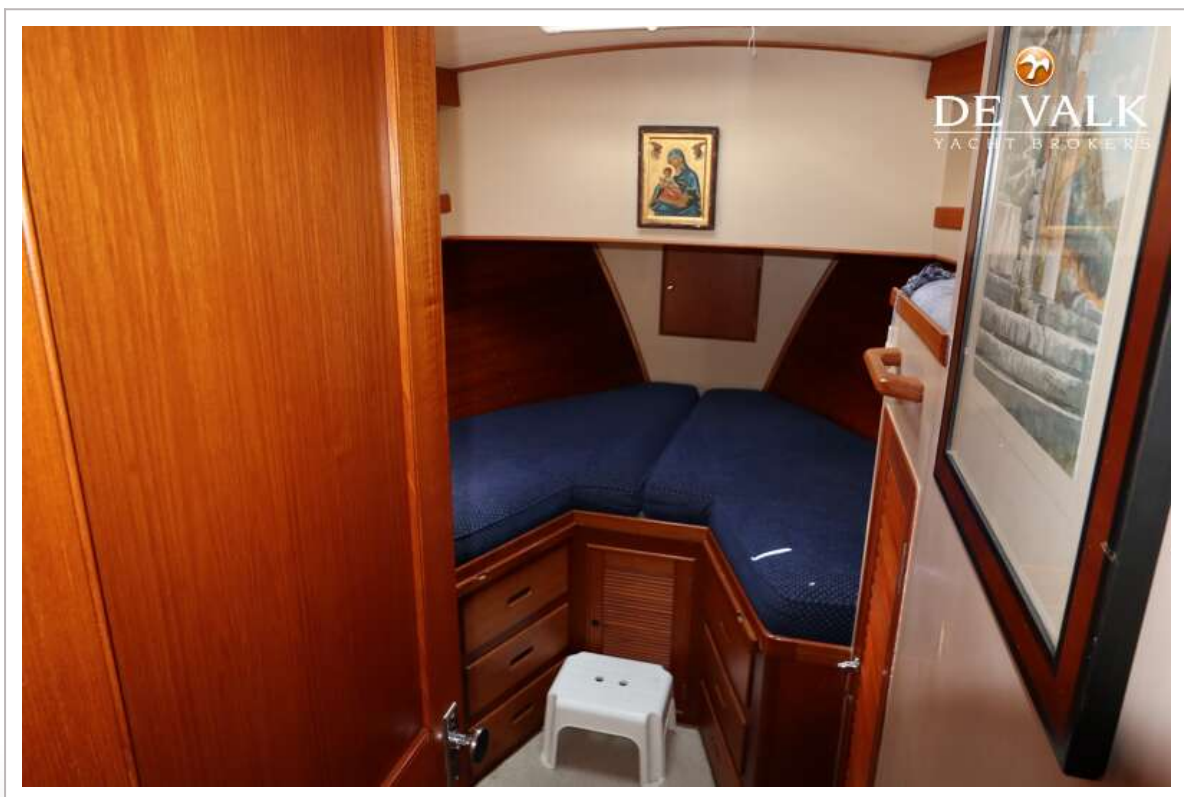




# GRAND BANKS 42 MOTORYACHT



# GRAND BANKS 42 MOTORYACHT





# GRAND BANKS 42 MOTORYACHT

