



DE VALK
YACHT BROKERS



ALTENA 49 EXPRESS



DE VALK
YACHT BROKERS

ALTENA 49 EXPRESS

BROKER'S COMMENTS

Are you looking for a semi displacement motor yacht that has good speed, lots of space, a SAUNA, a spacious owners cabin, and two large Volvo penta engine's than this Altena 49 Express can be interesting for you. Sold by her second owner and kept in a nice condition, ready to go. This Altena 49 express can be viewed in our covered sales marina in Sneek.

Peter Spruyt

SPECIFICATIONS

Dimensions	14.95 x 4.65 x 1.35 (m)	Builder	Altena Yachting Raamsdonkveer
Built	1990	Cabins	3
Material	Steel	Berths	6
Engine(s)	2 x Volvo-Penta TAMD 71B diesel	Hp/Kw	2 x 385.00 (hp), 282.98 (kw)
Asking price	sold (VAT)	Lying	at sales office

CONTACT

Sales office	De Valk Sneek	Telephone	+31 (0)515 42 80 30
Address	Zwolsmanweg 7 8606 KC Sneek NL	E-mail	sneek@devalk.nl

DISCLAIMER

These particulars are given in good faith as supplied but cannot be guaranteed.



ALTENA 49 EXPRESS

GENERAL

Model	ALTENA 49 EXPRESS
Type	motor yacht
LOA (m)	14,95
Beam (m)	4,65
Draft (m)	1,35
Air draft (m)	5,20
Headroom (m)	1,90
Year built	1990
Builder	Altena Yachting Raamsdonkveer
Country	The Netherlands
Displacement (t)	22
CE norm	NA
Hull material	steel
Hull colour	white
Hull thickness (mm)	5 mm
Hull shape	multi hard chine
Keel type	long keel
Superstructure material	steel
Superstructure (mm)	4 mm
Deck plate thickness (mm)	4 mm
Deck material	steel
Deck finish	teak
Superstructure deck finish	paint
Antifouling (year)	2021
Dorades	yes
Window frame	aluminium
Window material	double glazing
Deckhatch	5x
Portholes	aluminium With screens
Insulation	rockwool 5 cm



Radar arch	non collapsible
Fuel tank (litre)	steel 1600 Ltr (3 tanks)
Level indicator (fuel tank)	yes
Freshwater tank (litre)	1000 ltr (3 tanks)
Level indicator (freshwater)	yes
Blackwater tank (litre)	350 ltr
Level indicator (blackwater)	yes
Wheel steering	hydraulic
Inside helm position	yes
Outside helm position	electric On pilothouse roof

ACCOMMODATION

Cabins	3
Berths	6
Interior	mahogany
Floor	carpet And teak and holly
Aft deck	yes
Pilot house	yes
Deck saloon	yes
Heating	central heating Webasto Heater
Heating 2	central heating Via engine
Opening door to cockpit	Aluminium
Galley	yes
Countertop	plastic
Sink	emaille
Cooker	ceramic 4 burner AEG
Oven	AEG
Extractor	Pelgrim
Microwave	Moulinex
Fridge	1x kitchen Engel 82 Ltr with Freezing compartment and 1x Coolmatic 110Ltr in salon with Freezing compartment



ALTENA 49 EXPRESS

Dishwasher	Electrolux Vunette
Ice maker	U-line
Owners cabin	French bed
Bed length (m)	2.00 m
Wardrobe	hanging/drawers/shelves Walk in closet
Bathroom	en suite
Toilet	yes
Toilet system	electric
Wash basin	in the bathroom
Guest cabin 1	double bed
Bed length (m)	2.00
Wardrobe	hanging and shelves
Bathroom	separate
Toilet	separate
Toilet system	electric
Wash basin	at the toilet
Shower	separate
Extra info	Sauna
Guest cabin 2	bunk bed
Bed length (m)	2.00
Wardrobe	shelves
Bathroom	shared

MACHINERY

No of engines	2
Make	Volvo-Penta
Type	TAMD 71B
HP	385
kW	282.98
Fuel	diesel
Year installed	1990



ALTENA 49 EXPRESS

Cruising speed (kn)	7.5
Consumption (l/hr)	15
Engine hours	Ca 3200
Engine cooling system	freshwater heat exchanger
Drive	shaft
Shaft seal	yes
Engine controls	electrical Micro Commander
Gearbox	hydraulic TwinDisc MS507-1
Bowthruster	hydraulic Koop Nautic
Exhaust	watercooled
Thrust bearing	yes
Propeller type	fixed
Propeller blades	4
Propeller shaft material	stainless steel
Shaft lubrication	grease Lubricating system
Manual bilge pump	yes
Electric bilge pump	yes
Electrical installation	220V / 24V
Generator	silent separator Mitsubishi 12,5 KVA
Running hours generator	1584
Batteries	yes
Start battery	Cat 180 Ah Gel
Service battery	Cat 210Ah Gel
Generator battery	Cat
Battery charger	Victron Skylla 24/50
Battery charger/inverter	Victron Phoenix Multi 24/3000/70
Diode battery combiners	yes
Shorepower	with cable
Trimtabs	Bowman
Extra info	Exalto Automatic Shaft Greasing system



NAVIGATION

Electric compass	Autohelm
Depth sounder	Autohelm
Log	Autohelm
Windset	Autohelm
VHF	Shipmate RS8110
Autopilot	Autohelm 7000
Rudder angle indicator	In the Autopilot
Radar	Koden MP3000 (not connected)
GPS	Autohelm
Navigation lights	yes
Searchlight	2x ITT remote controlled
Loudhailer	M3
Extra info	Mocoma 99 - 27 mc

EQUIPMENT

Cockpit table	yes
Bathing platform	yes
Boarding ladder	yes
Deck shower	yes
Anchor	CQR Plough
Anchor chain	yes
Anchor 2	Pool Rear anchor
Anchor chain	Ca 30 m
Windlass	electrical
Windlass aft	electrical
Deck wash	yes
Davits	stainless steel
Davits controls	manual
Sea railing	stainless steel
Grab rail (superstructure)	stainless steel



ALTENA 49 EXPRESS

Railing side opening gates	2x
Horn	yes
Fenders	yes
Mooring lines	yes
Radio	Marine Audio MA200
Clock - barometer	yes



ALTENA 49 EXPRESS



ALTENA 49 EXPRESS



ALTENA 49 EXPRESS



ALTENA 49 EXPRESS



ALTENA 49 EXPRESS



ALTENA 49 EXPRESS



ALTENA 49 EXPRESS



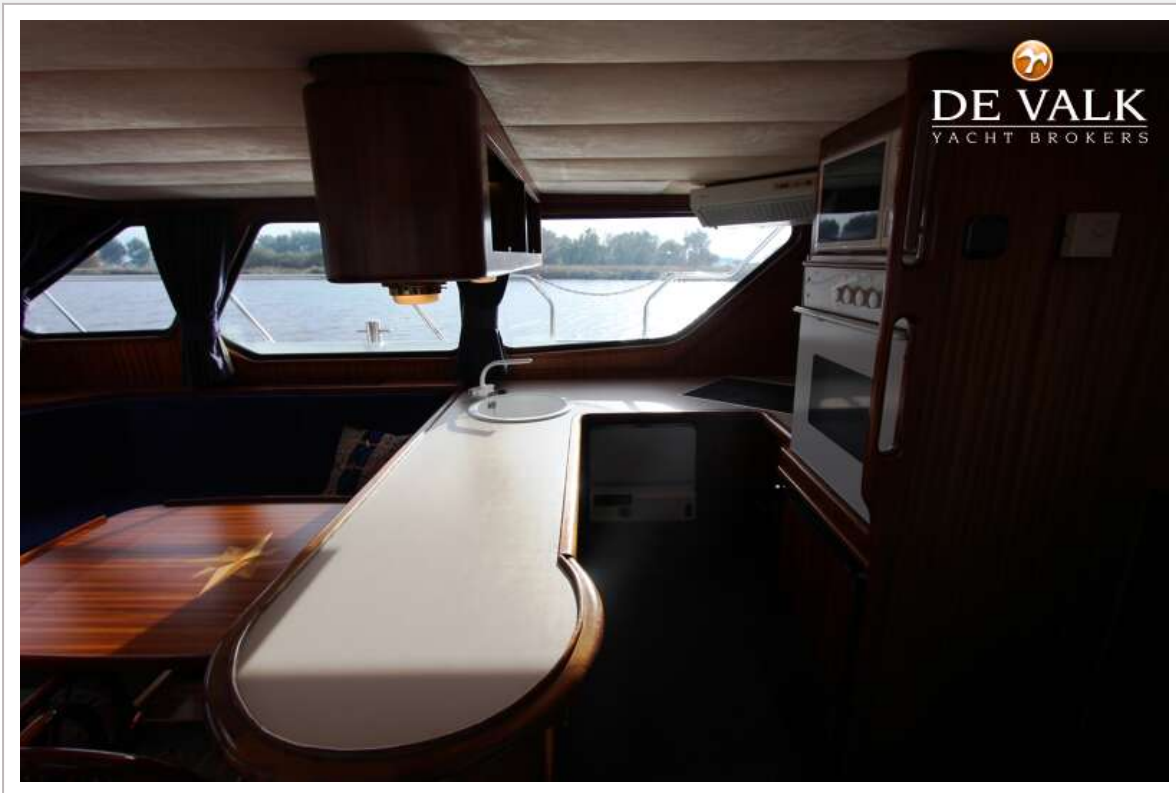
ALTENA 49 EXPRESS



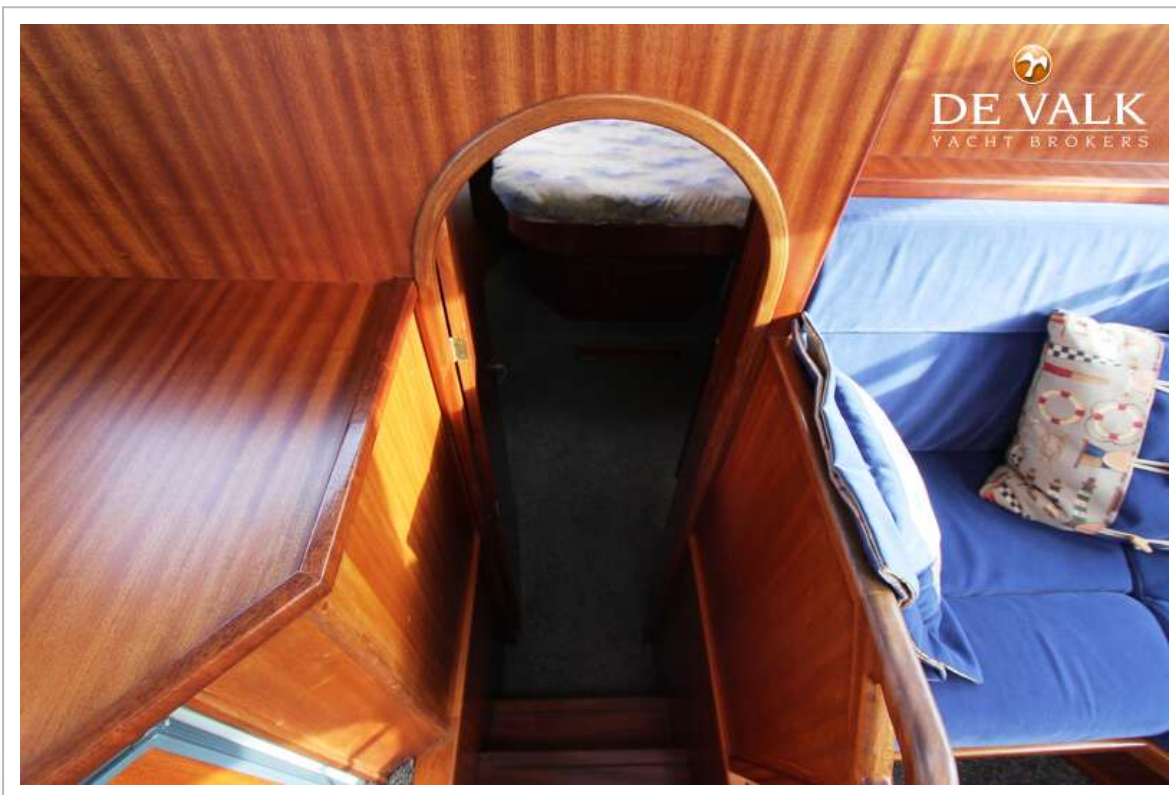
ALTENA 49 EXPRESS



ALTENA 49 EXPRESS



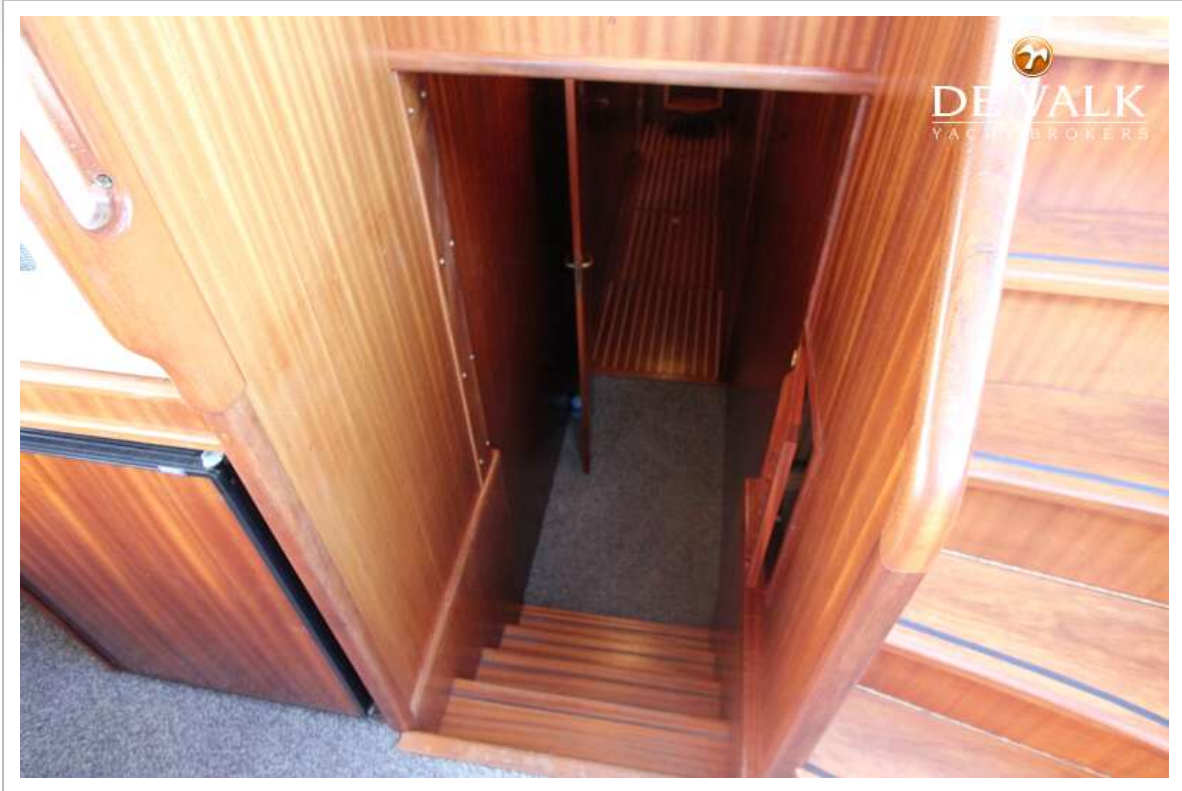
ALTENA 49 EXPRESS



ALTENA 49 EXPRESS



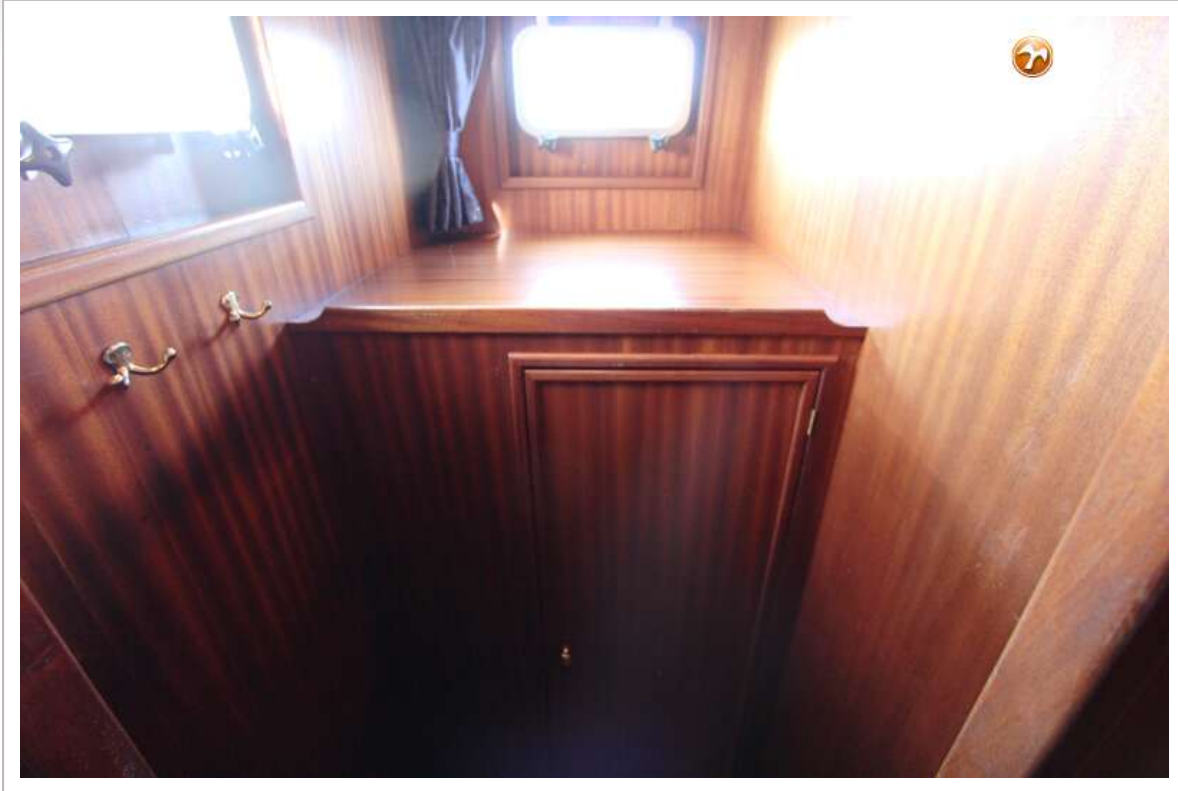
ALTENA 49 EXPRESS



ALTENA 49 EXPRESS



ALTENA 49 EXPRESS



ALTENA 49 EXPRESS

