



DE VALK
YACHT BROKERS



ONE-OFF ALUMINIUM SAILING YACHT



DE VALK
YACHT BROKERS

ONE-OFF ALUMINIUM SAILING YACHT

BROKER'S COMMENTS

One Off Sailing Yacht high-quality built 2005 Bluewatercruiser. A unique structurally strong built aluminium yacht with the necessary comfort and living space on board. She is equipped with two engines, solar panels and a wind generator to stay independently on for longer periods and is now owned by the second owner. This aluminium yacht is suitable for both short-term and long-term stays and can be viewed 7 days a week at our Hindeloopen location!

Johan Nooitgedagt

SPECIFICATIONS

Dimensions	13.00 x 4.00 x 2,30 / 1.15 (m)	Builder	Willy Janssen (Bülkau)
Built	2005	Cabins	2
Material	Aluminium	Berths	5
Engine(s)	2 x Yanmar 3YM30 diesel	Hp/Kw	2 x 29.00 (hp), 21.34 (kw)
Asking price	sold (VAT)	Lying	at sales office

CONTACT

Sales office	De Valk Hindeloopen B.V.	Telephone	+31 514 52 40 00
Address	Oosterstrand 1 8713 JS Hindeloopen NL	E-mail	hindeloopen@devalk.nl

DISCLAIMER

These particulars are given in good faith as supplied but cannot be guaranteed.



ONE-OFF ALUMINIUM SAILING YACHT

GENERAL

Model	ONE-OFF ALUMINIUM SAILING YACHT
Type	sailing yacht
LOA (m)	13,00
Beam (m)	4,00
Draft (m)	1,15
Draft min (m)	2,30
Air draft (m)	20,00
Headroom (m)	2,00
Year built	2005
Builder	Willy Janssen (Bülkau)
Country	Germany
Designer	Capella-Yachtdesign Thomas Roeper
Displacement (t)	9,2
Ballast (tonnes)	lead in aluminum 3,5
Hull material	aluminium
Hull colour	Seewater resistant Alu-star tougherAluminium with higher density
Hull thickness (mm)	6 mm
Hull shape	round-bilged
Keel type	lifting keel
Superstructure material	aluminium
Superstructure (mm)	5 mm
Deck material	aluminium
Deck finish	non-skid paint
Superstructure deck finish	paint
Cockpit deck finish	non-skid paint
Antifouling (year)	2021
Window frame	aluminium
Window material	polycarbonate
Deckhatch	7
Insulation	foam



ONE-OFF ALUMINIUM SAILING YACHT

Radar arch	non collapsible
Fuel tank (litre)	polyethylene 130 ltr
Fuel tank 2 (litre)	polyethylene 130 ltr.
Level indicator (fuel tank)	analogue
Freshwater tank (litre)	polyethylene 1x 300 ltr. & 1x 200 ltr.
Level indicator (freshwater)	analogue
Blackwater tank (litre)	polyethylene 80 ltr.
Level indicator (blackwater)	analogue
Blackwater tank extraction	deck extraction
Wheel steering	mechanical
More info on hull	Http://www.thomasroeper.de/yachtdesign/nr14.html
Extra info	Aluminium hull and deck require repair work

ACCOMMODATION

Cabins	2
Berths	5
Interior	cherry
Floor	wood
Doghouse	yes
Saloon	yes
Headroom saloon (m)	2 mtr.
Heating	diesel ducted hot air Waeco
Heating 2	electric 220V
Galley	yes
Countertop	plastic
Sink	stainless steel
Cooker	calor gas
Oven	in cooker
Gas alarm	1x co2 & 1x propane/brutane
Microwave	yes
Fridge	yes



ONE-OFF ALUMINIUM SAILING YACHT

Hot water system	by engine
Water pressure system	electrical
Manual and/or foot pump	foot pump for seawater
Coffee maker	yes
Crockery	yes
Owners cabin	double bed
Bed length (m)	2 mtr.
Wardrobe	hanging/drawers/shelves
Guest cabin 1	bunk bed
Bed length (m)	2 mtr.
Guest cabin 2	Dog bunk / hondekooi / hundekoje

MACHINERY

No of engines	2
Make	Yanmar
Type	3YM30
HP	29
kW	21.34
Fuel	diesel
Year installed	2007
Year of overhaul	yes
Maximum speed (kn)	7,5
Cruising speed (kn)	6
Consumption (l/hr)	3,5
Engine cooling system	freshwater heat exchanger
Drive	sail-drive
Saildrive seal	yes

NAVIGATION

Compass	Whitlock
Electric compass	yes



ONE-OFF ALUMINIUM SAILING YACHT

Multi control display	I70
Depth sounder/log	yes
Windset	yes
VHF	Raymarine Ray 63
VHF handheld	- Standard Horizon - Icom M35
Autopilot	Raymarine P70S + Remote Smart Controller
Wind vane steering install.	yes
Radar	Raymarine 45" Dome (digital)
Radar/GPS/plotter	Inside: Raymarine Axiom 9" Outside: Raymarine Axiom 12" Pro
EPIRB	yes
Navigation lights	yes

EQUIPMENT

Sprayhood	yes
Fixed hardtop	yes
Cockpit table	yes
Boarding ladder	aluminum
Anchor	yes
Windlass	electrical
Dinghy	inflatable
Outboard	yes
Outboard support	yes
Sea railing	yes
Pushpit	yes
Pulpit	yes
Life raft	Need to be checked
Life raft (pers)	6
Last life raft survey	Needs service

RIGGING

Rigging	sloop Shortend by 1,2 ,meter to fity USA intercoastal waterway
---------	--



ONE-OFF ALUMINIUM SAILING YACHT

Spreaders	2x
Mainsail	2017 Northsails 3di 51.66m2
Jib	2017 Northsails 3di 42m2
Code Zero	2021 Yuca Voiles 72m2
Gennaker	2015
Stormjib	2021 Lundh sails orange 10m2
Primary sheet winch	2x Lewmar 45" 2x Lewmar 54"
Multifunctional winches	halyard/sheet winches 2x 54" electric
Winchcovers	yes



ONE-OFF ALUMINIUM SAILING YACHT



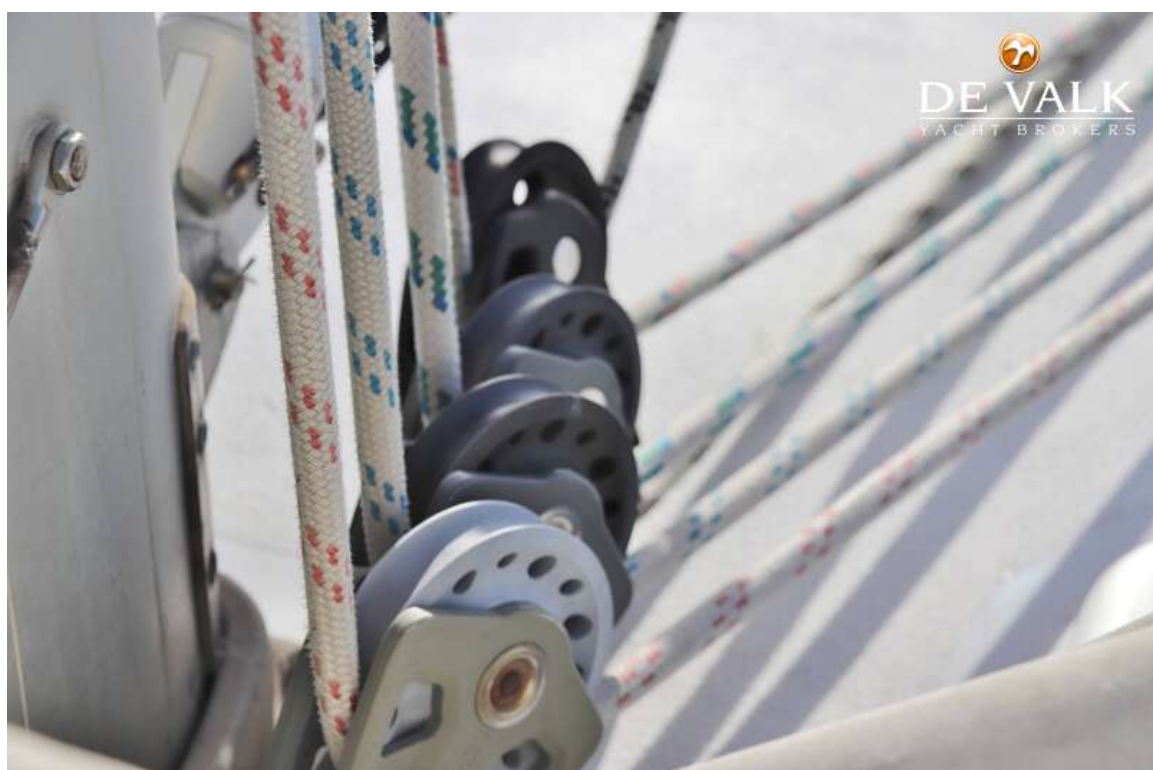
ONE-OFF ALUMINIUM SAILING YACHT



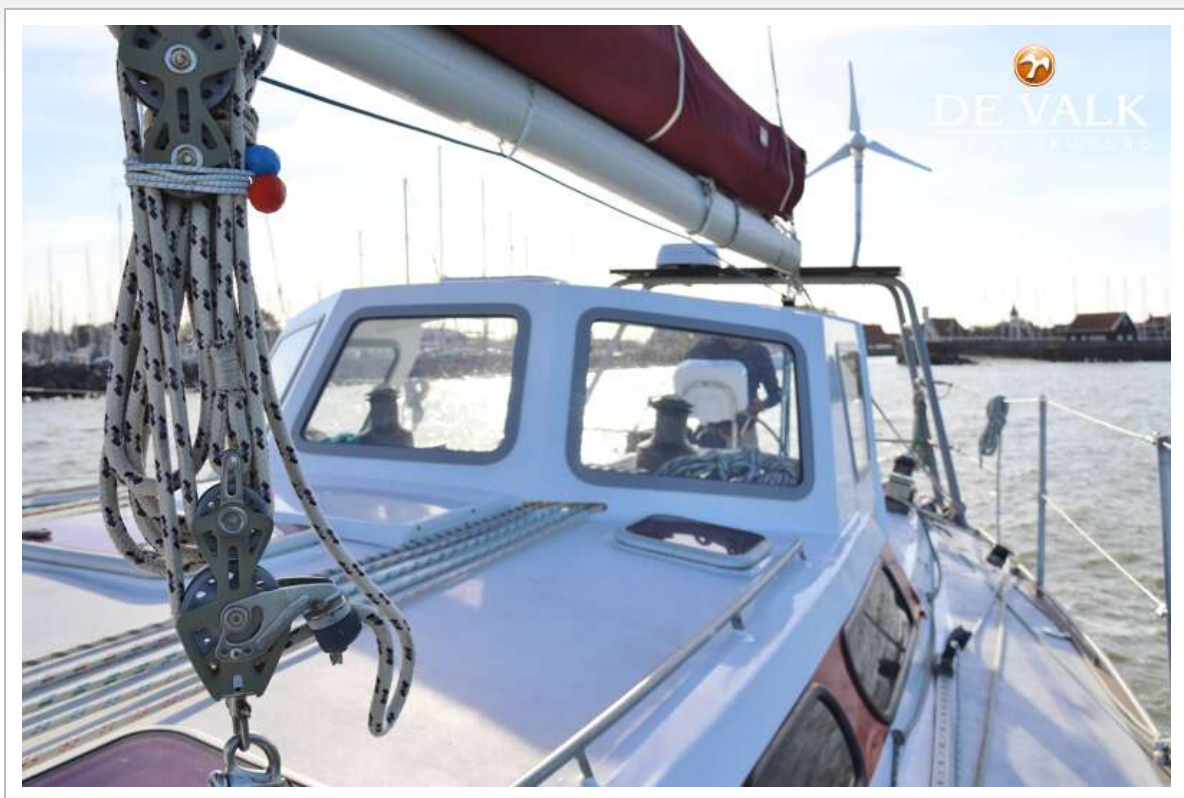
ONE-OFF ALUMINIUM SAILING YACHT



ONE-OFF ALUMINIUM SAILING YACHT



ONE-OFF ALUMINIUM SAILING YACHT



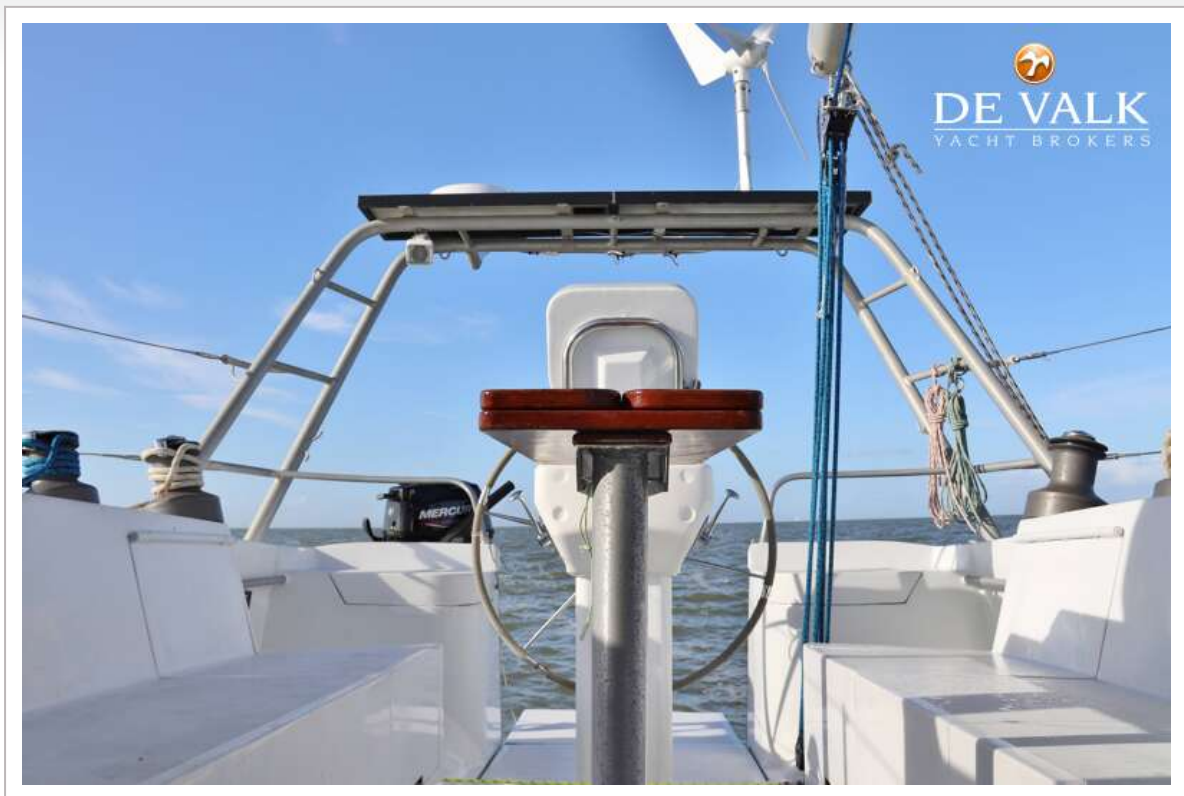
ONE-OFF ALUMINIUM SAILING YACHT



ONE-OFF ALUMINIUM SAILING YACHT



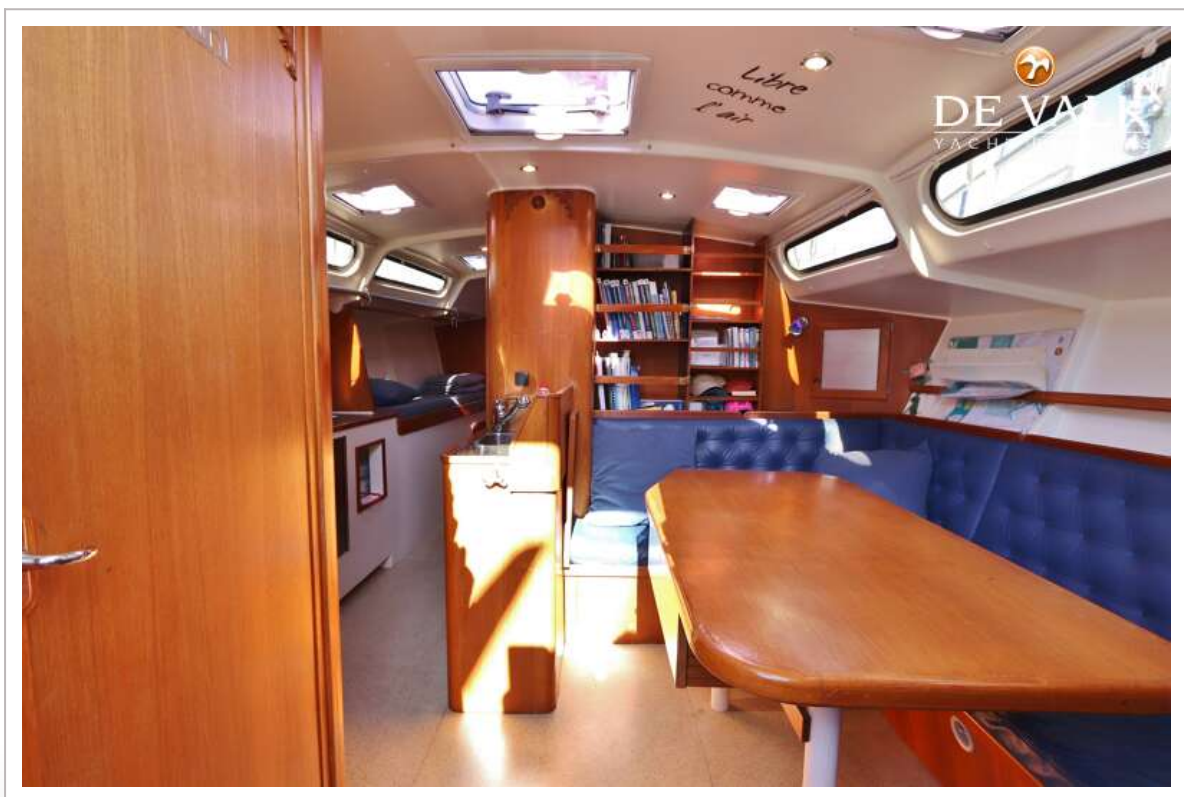
ONE-OFF ALUMINIUM SAILING YACHT



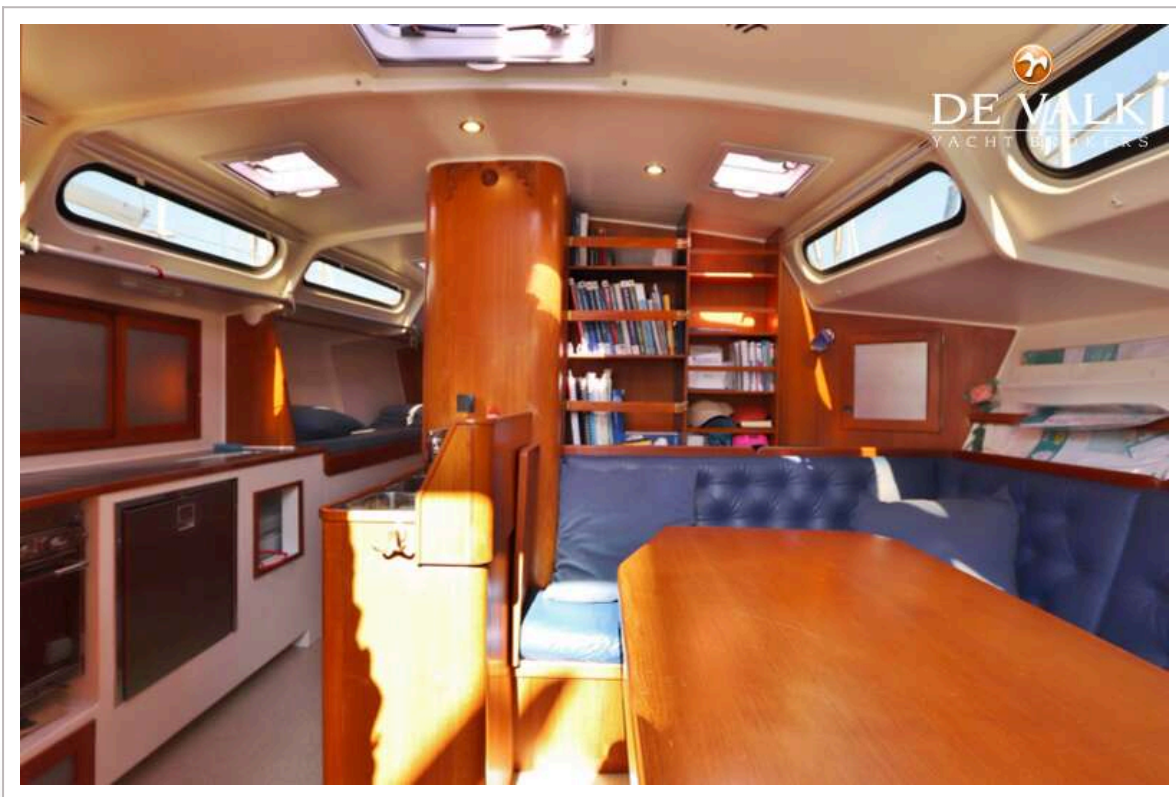
ONE-OFF ALUMINIUM SAILING YACHT



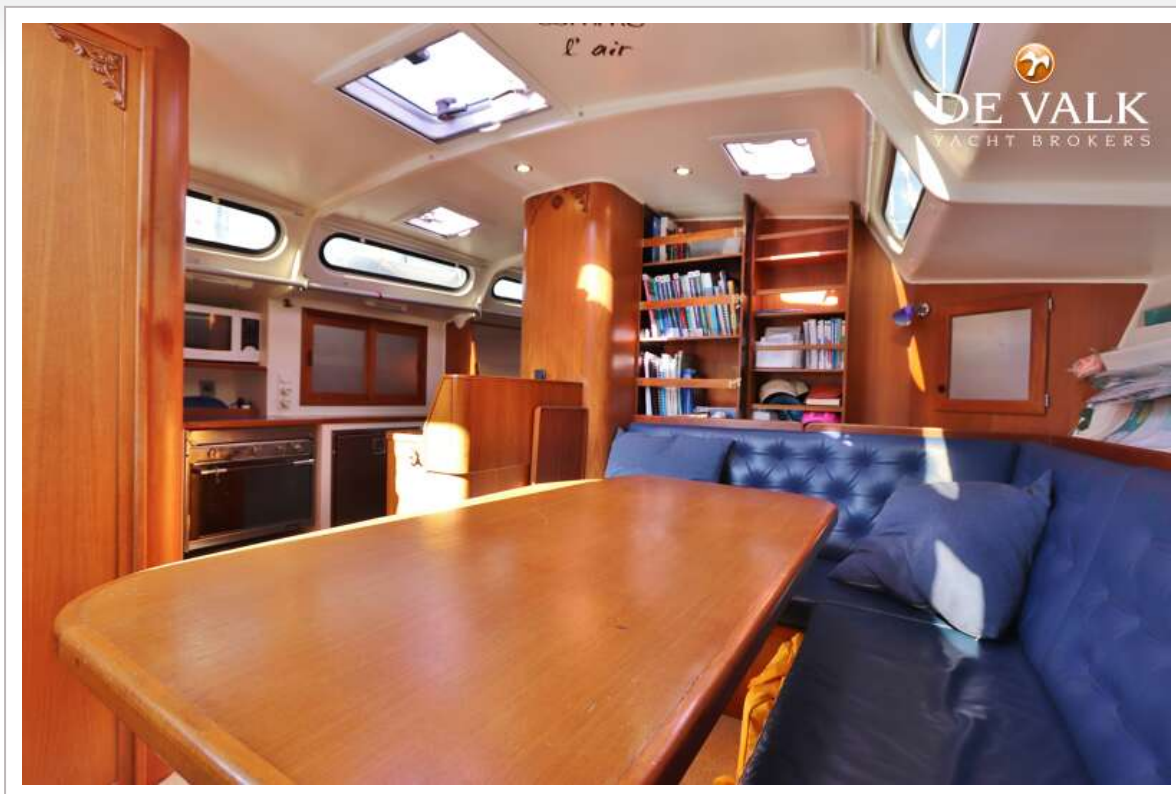
ONE-OFF ALUMINIUM SAILING YACHT



ONE-OFF ALUMINIUM SAILING YACHT



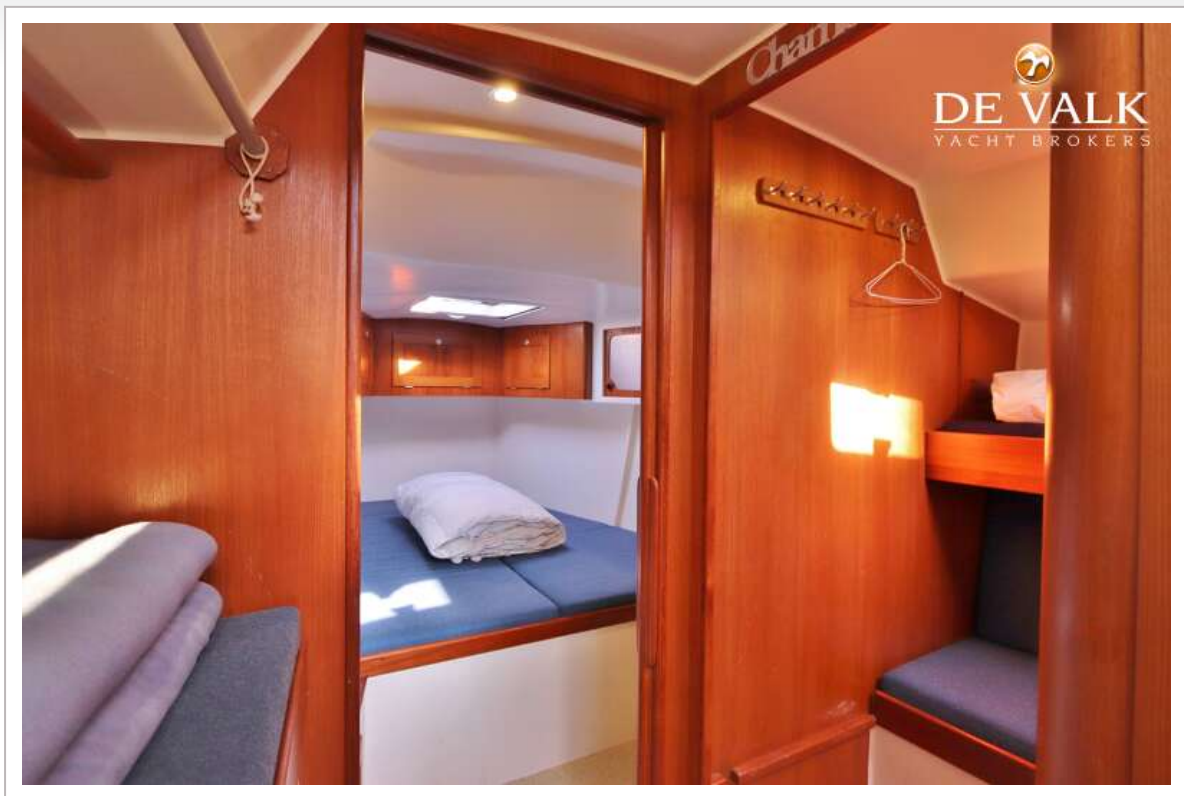
ONE-OFF ALUMINIUM SAILING YACHT



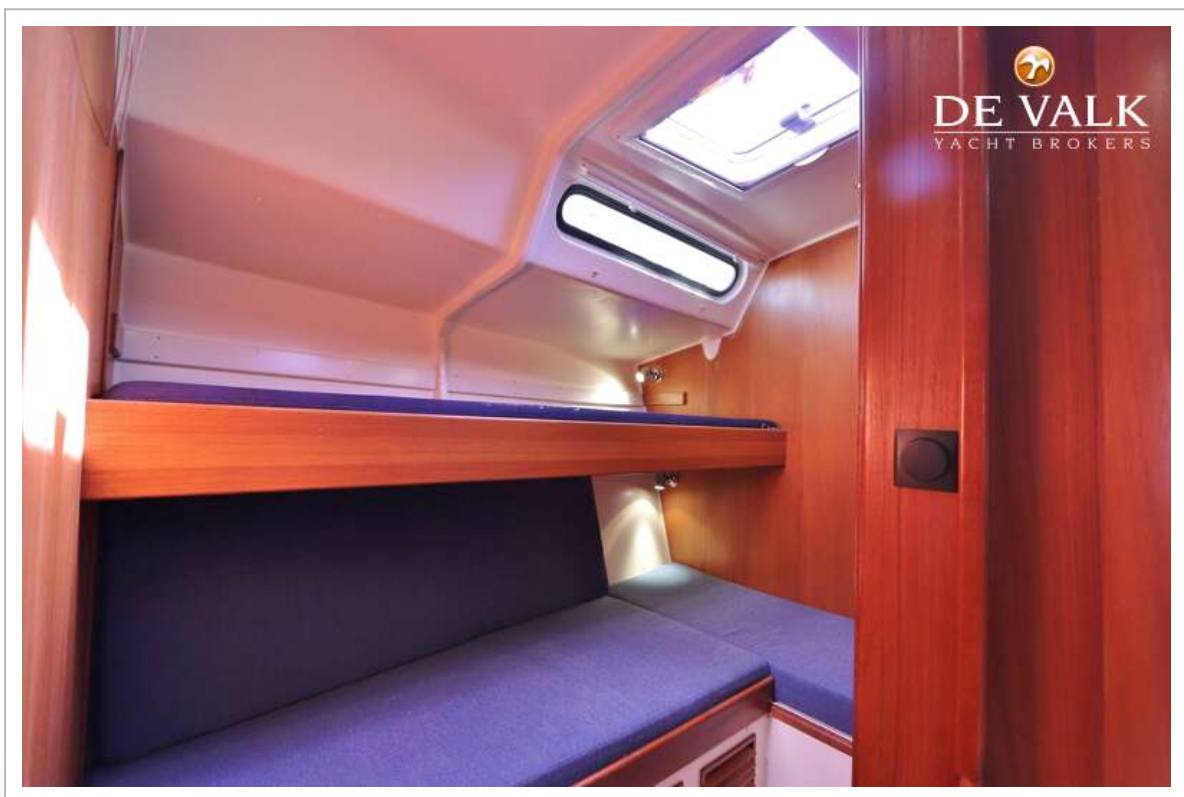
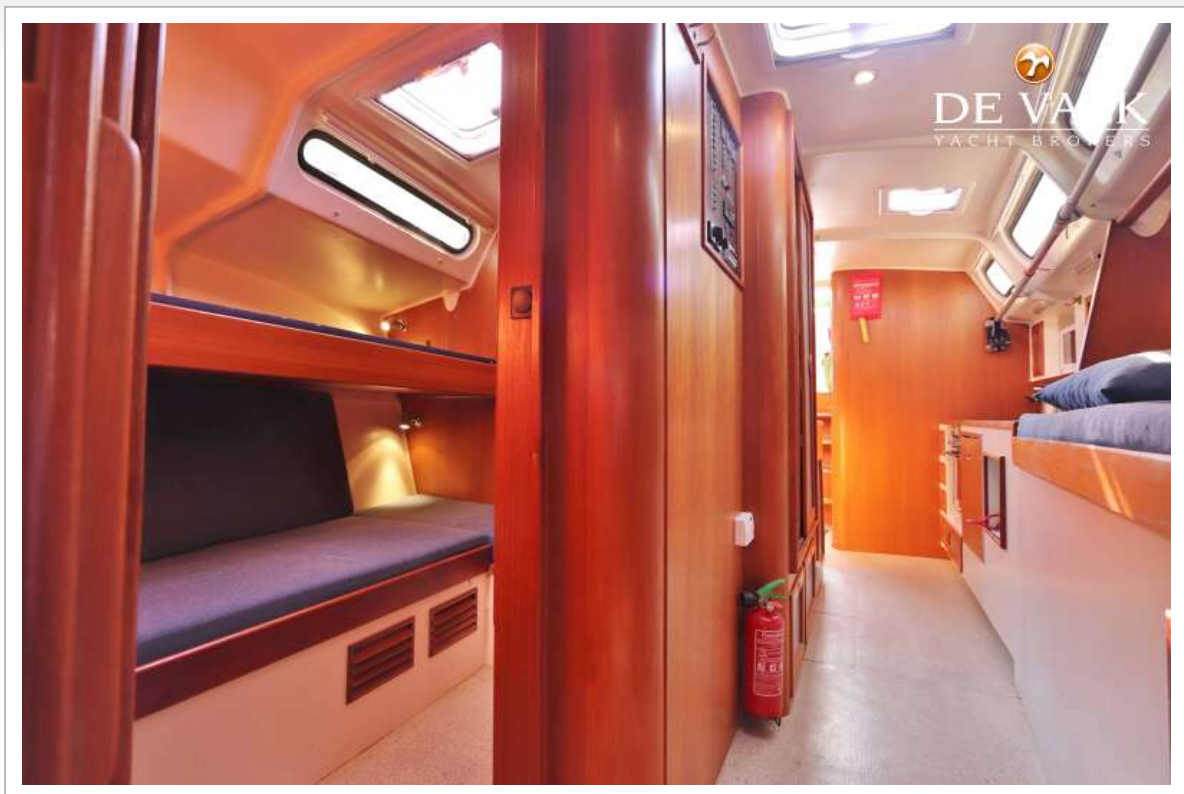
ONE-OFF ALUMINIUM SAILING YACHT



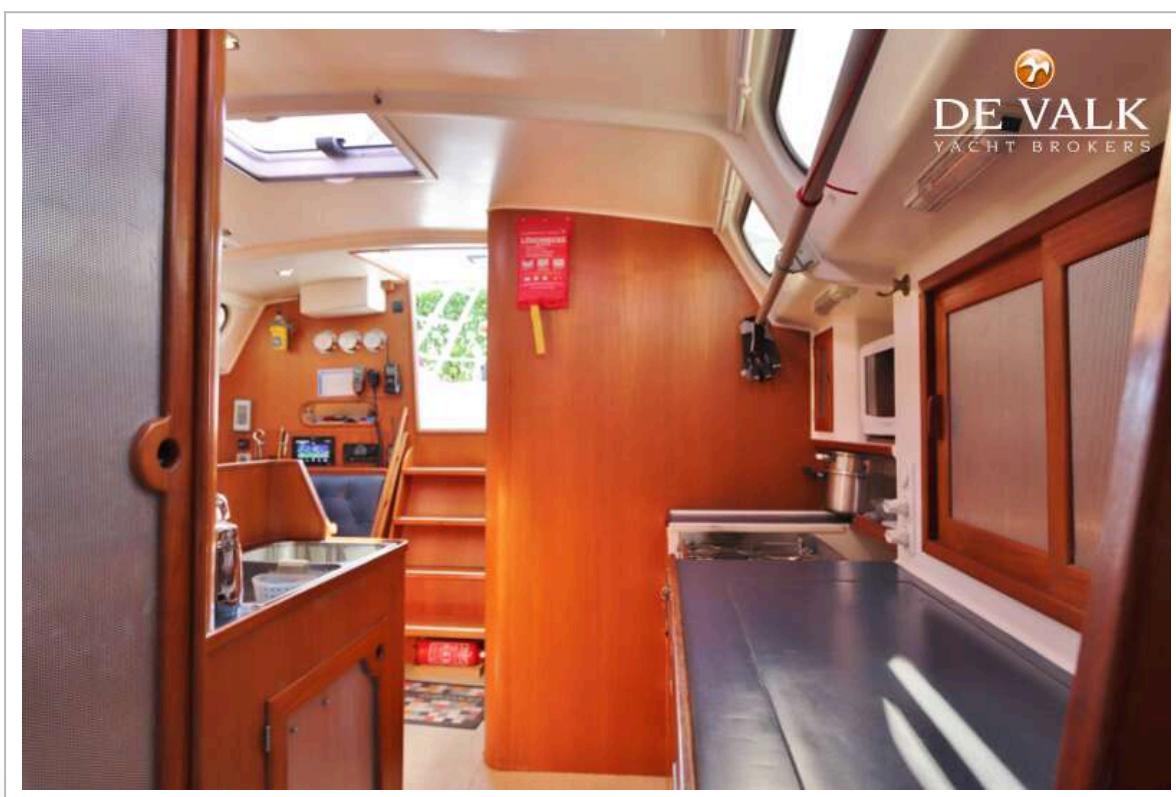
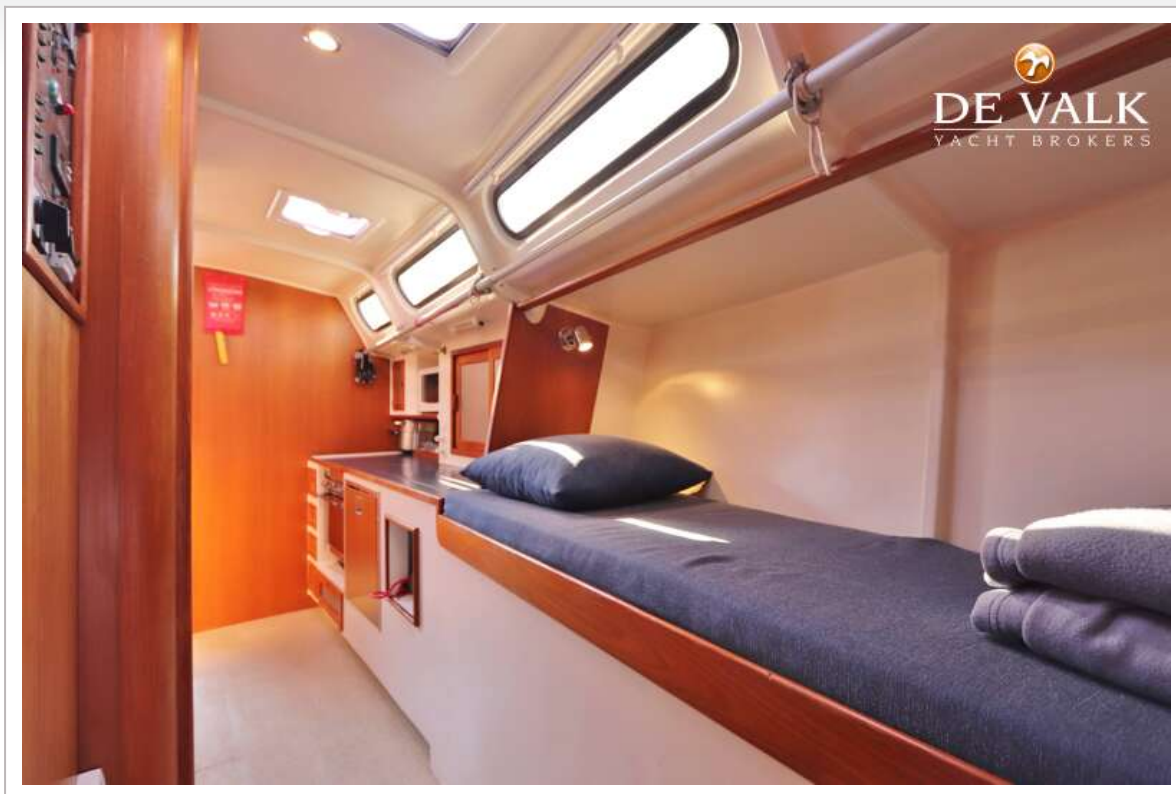
ONE-OFF ALUMINIUM SAILING YACHT



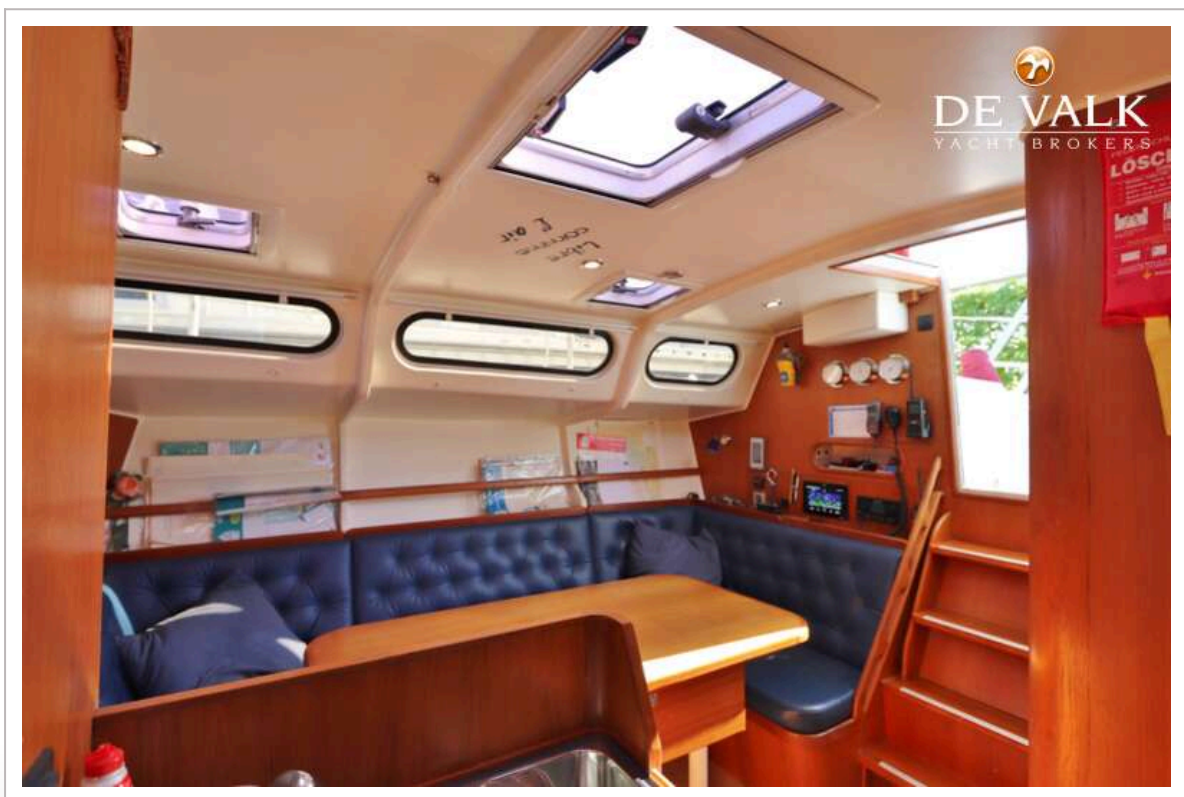
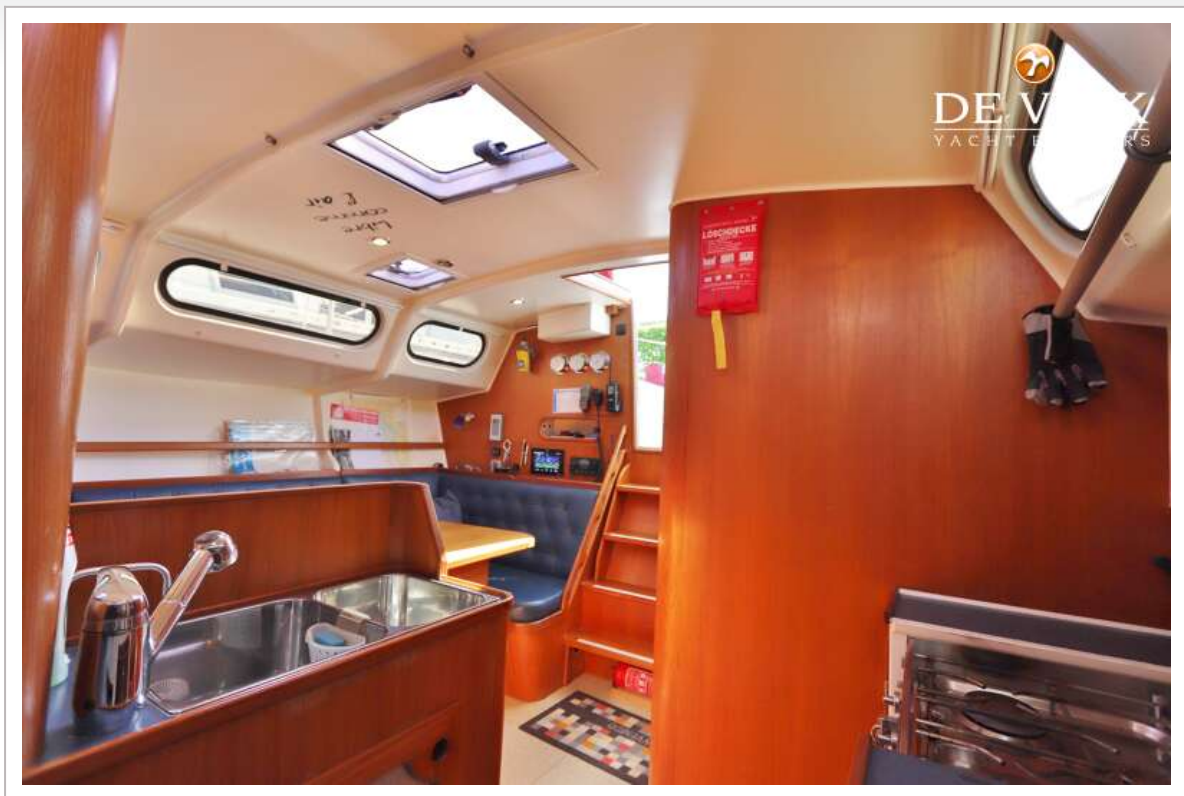
ONE-OFF ALUMINIUM SAILING YACHT



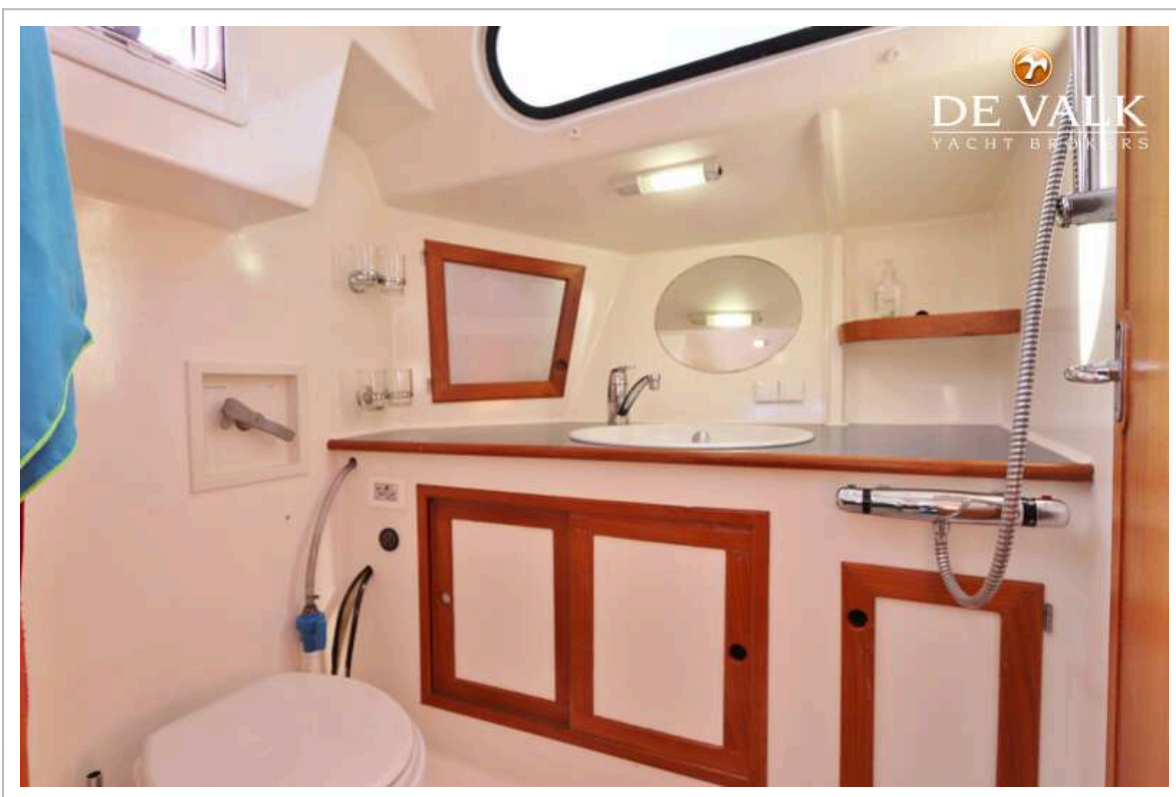
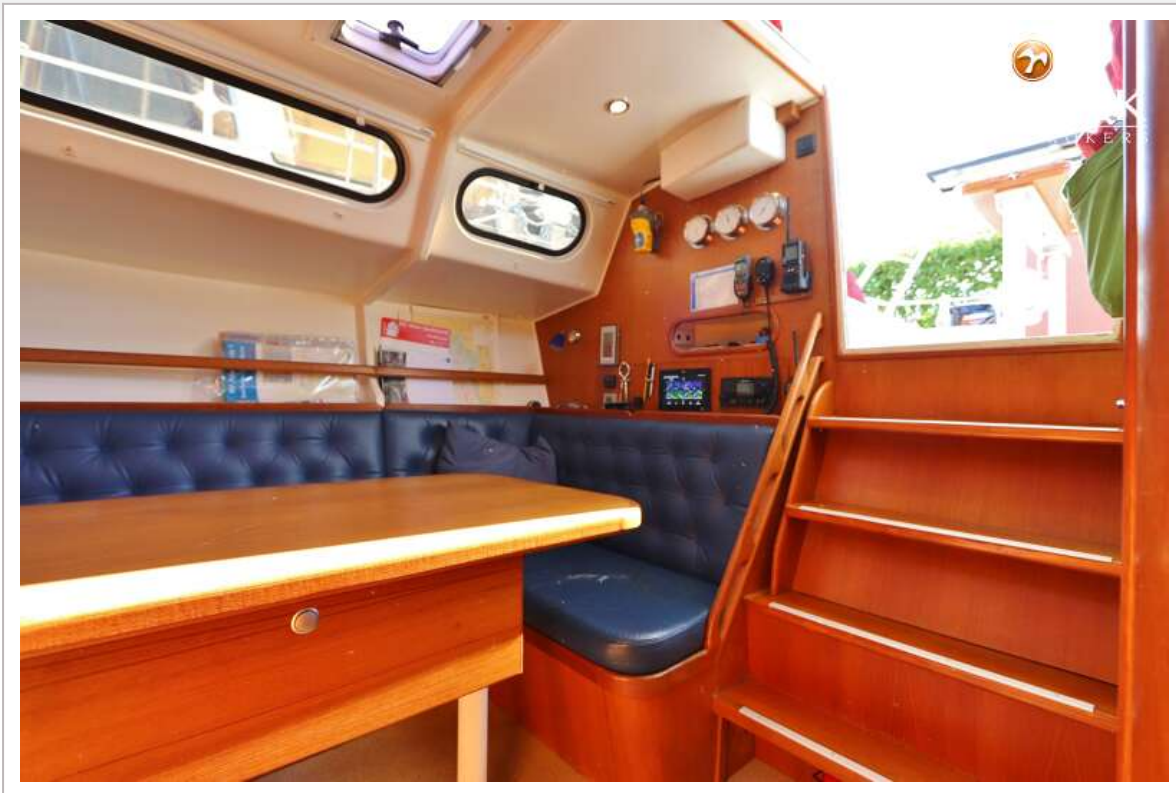
ONE-OFF ALUMINIUM SAILING YACHT



ONE-OFF ALUMINIUM SAILING YACHT



ONE-OFF ALUMINIUM SAILING YACHT



ONE-OFF ALUMINIUM SAILING YACHT

