



DE VALK
YACHT BROKERS



BENETEAU OCEANIS CLIPPER 311



DE VALK
YACHT BROKERS

BENETEAU OCEANIS CLIPPER 311

BROKER'S COMMENTS

"The Beneteau Oceanis Clipper 311; designed by the Groupe Finot to exacting specifications, she's a truly fast cruiser with a standard of comfort that one might expect on much bigger boats. Good accommodations with four fixed berths + two in the saloon. "Aju" is fitted with a new standing rigging, sails and navigation equipment or, in other words, ready to go! She can be seen in our sales marina 7 days a week."

SPECIFICATIONS

Dimensions	9,85 x 3,23 x 1,45 (m)	Builder	Beneteau SA, St-Hilaire-de-Riez,
Built	2000	Cabins	2
Material	GRP	Berths	6
Engine(s)	1 x Volvo Penta MD 2020-C BT diesel	Hp/Kw	18 (hp), 13,23 (kw)
	SOLD	Lying	at sales office

CONTACT

Sales office	De Valk Monnickendam	Telephone	+31 299 65 63 50
Address	Hoogedijk 6	Fax	+31 (0)299 65 63 41
	1145 PM Katwoude	E-mail	monnickendam@devalk.nl
	The Netherlands		

DISCLAIMER

These particulars are given in good faith as supplied but cannot be guaranteed and cannot be used for contracts.



GENERAL

Model	BENETEAU OCEANIS CLIPPER 311
Type	sailing yacht
LOA (m)	9,85
LWL (m)	8,80
Beam (m)	3,23
Draft (m)	1,45
Headroom (m)	1,85
Year built	2000
Builder	Beneteau SA, St-Hilaire-de-Riez,
Country	France
Designer	Groupe Finot
Displacement (t)	3,65
CE norm	B
Hull material	GRP
Hull colour	white
Hull shape	round-bilged
Keel type	fin keel with bulb
Superstructure material	GRP
Deck material	GRP
Deck finish	non-skid moulded in
Superstructure deck finish	non-skid moulded in
Cockpit deck finish	non-skid moulded in
Antifouling (year)	1-5-2020
Window frame	aluminium
Window material	polycarbonate
Deckhatch	yes
Fuel tank (litre)	70
Freshwater tank (litre)	200
Wheel steering	mechanical
Emergency tiller	yes



ACCOMMODATION

Cabins	2
Berths	6
Interior	cherry
Saloon	yes
Headroom saloon (m)	1.85
Heating	diesel ducted hot air Webasto
Chart table	yes
Aft Cabin	yes
Galley	yes
Countertop	yes
Sink	stainless steel
Cooker	yes
Oven	yes
Fridge	Frigoboat - 60L.
Hot water system	220V + engine boiler 22 l.
Water pressure system	electrical
Owners cabin	double bed After cabin
Bed length (m)	1,95 x 2,00
Wardrobe	hanging
Bathroom	shared
Toilet	shared
Toilet system	manual
Wash basin	yes
Guest cabin 1	v-bed Front cabin
Bed length (m)	2,00 x 1,40 m
Wardrobe	hanging

MACHINERY



BENETEAU OCEANIS CLIPPER 311

No of engines	1
Make	Volvo Penta
Type	MD 2020-C BT
HP	18
kW	13.23
Fuel	diesel
Year installed	2000
Maximum speed (kn)	6
Engine cooling system	freshwater heat exchanger
Drive	shaft
Engine controls	bowden cable Morse
Gearbox	Volvo MS2L
Exhaust	watercooled
Propeller type	fixed
Propeller blades	2
Propeller shaft material	stainless steel
Shaft lubrication	water
Manual bilge pump	yes
Electric bilge pump	yes
Electrical installation	12/220 V
Start battery	yes
Service battery	yes
Battery charger	Enag 8 amp.
Shorepower	with cable
Extra info	Engine maintenance by Yacht service De Waterman (shaft seal, impellor, oil and fuel filters) 22-4-2020

NAVIGATION

Compass	yes
Depth sounder	24-6-2017 Raymarine I70



Log	24-6-2017 Raymarine I70
Windset	24-6-2017 Raymarine I70 Wind
VHF	24-6-2017 I-Com VHF Marien Transceiver ICM 323G
Autopilot	Raymarine ST6002 (2006)
GPS	Garmin Quest
Plotter	Raymarine Axiom 7 MFS
Navigation lights	3-colour top lighting LED
Extra info	24-6-2017 EM-trac AID Class B Transceiver
Extra info	24-6-2017 Seataalk 1 converter

EQUIPMENT

Sprayhood	new windows 1-5-2022
Cockpit cover	yes
Cockpit table	yes
Bathing platform	teak slated
Boarding ladder	stainless steel
Deck shower	yes
Anchor	yes
Anchor chain	+ anchor line
Outboard support	yes
Sea railing	wire
Pushpit	yes
Pulpit	yes
Life raft	container 'Offshore Liferaft "Seago" type RAFT-G-4'
Last life raft survey	2020
Fenders	yes
Mooring lines	yes
Radio-cd player	yes

RIGGING

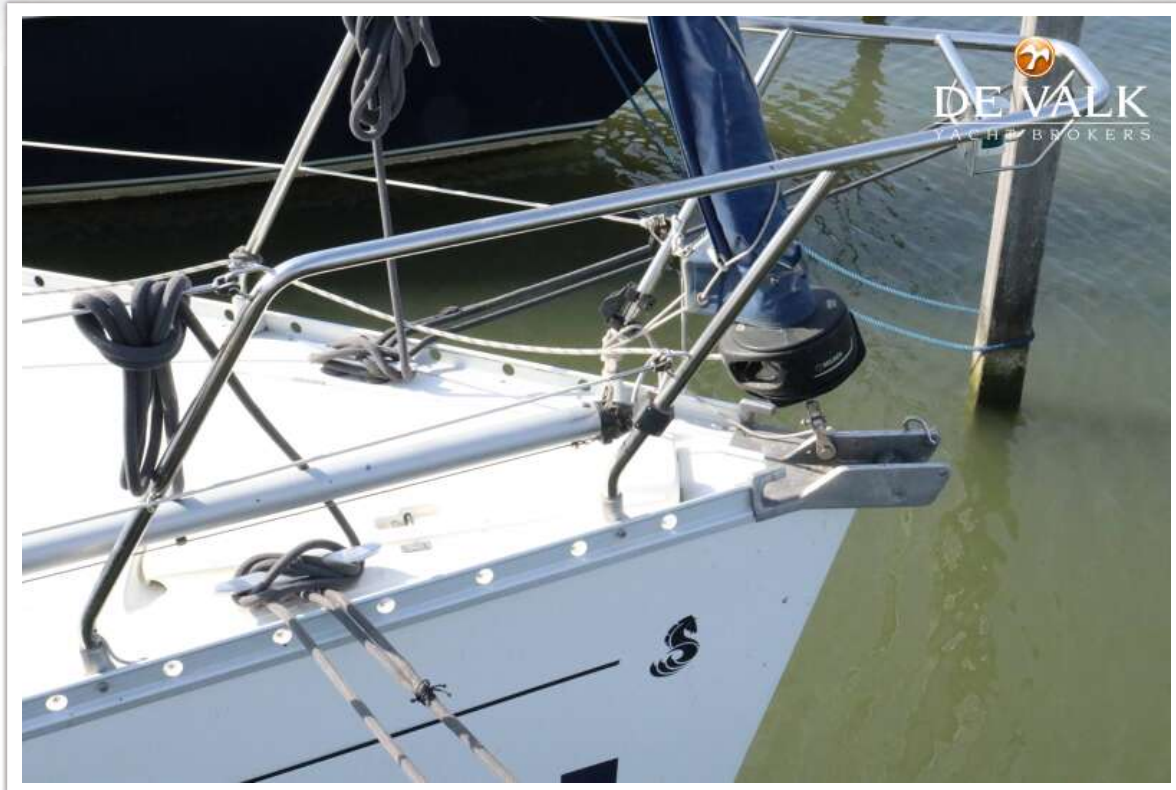


BENETEAU OCEANIS CLIPPER 311

Rigging	sloop
Standing rigging	wire 18-10-2017 6 mm.
Brand mast	Sparcraft
Material mast	aluminium
Spreaders	one set
Mainsail	24-2-2021 Sail Select Off Shore / Racing Hig Modulus Premium Dracon 3 reef
Mainsail cover	24-2-2021 Sail Select + Halvert Sail Lazyjacks
High aspect	31-10-2017 Hagoort Sails
Genoa furler	18-10-2017 Furlex 204
Gennaker	24-2-2021 Sail Select
Reefing System	quick-one-line-reefing
Boomvang	mechanical
Genoa sheetwinches	2x Lewmar 30 CSTO
Halyard winches	1x Lewmar 16 CSTO + one new winch of 2013.
Extra info	Lewmar Traveller on coach roof (2008)
Extra info	replacement of a number of Selden pulleys



BENETEAU OCEANIS CLIPPER 311



BENETEAU OCEANIS CLIPPER 311



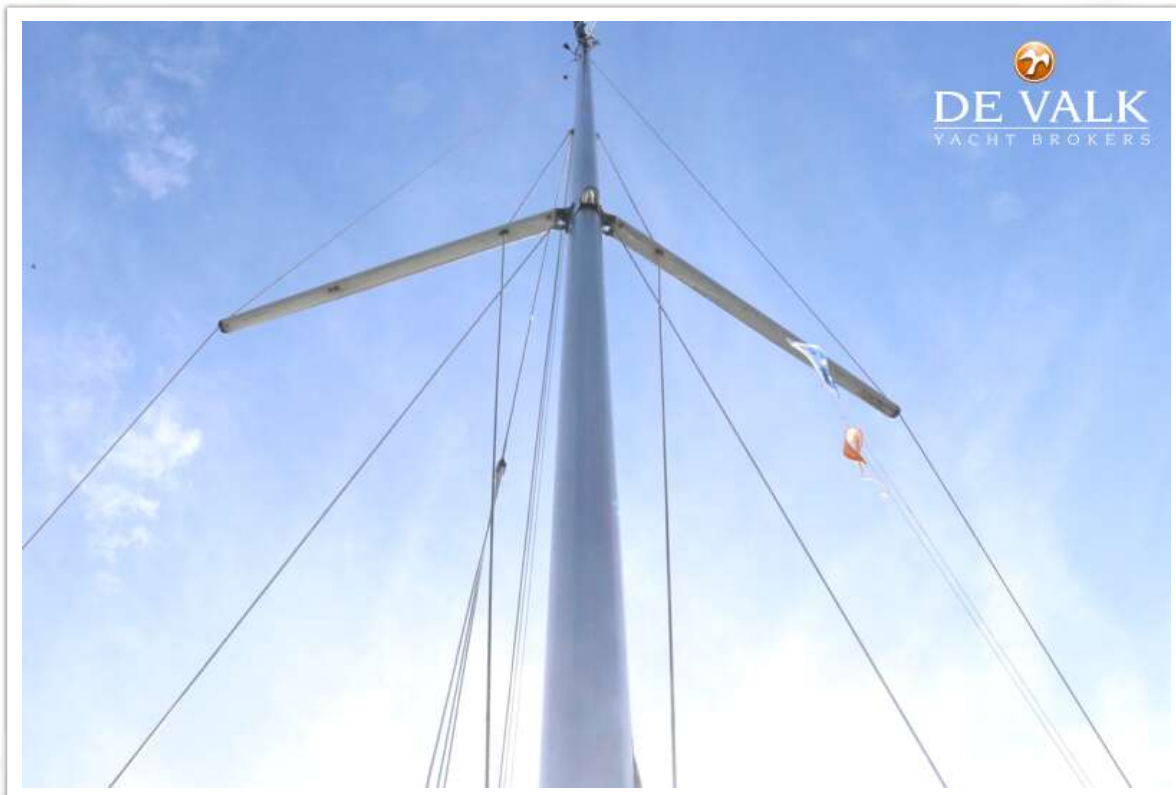
BENETEAU OCEANIS CLIPPER 311



BENETEAU OCEANIS CLIPPER 311



BENETEAU OCEANIS CLIPPER 311



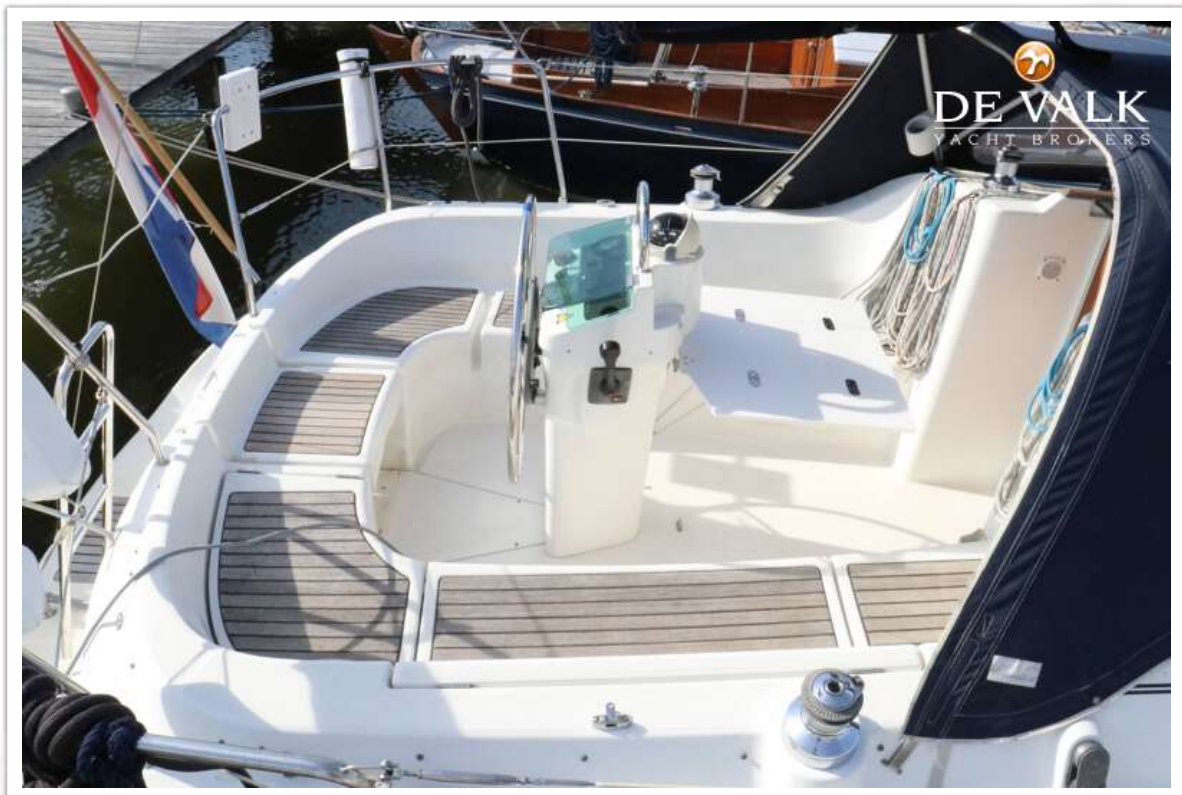
BENETEAU OCEANIS CLIPPER 311



BENETEAU OCEANIS CLIPPER 311



BENETEAU OCEANIS CLIPPER 311



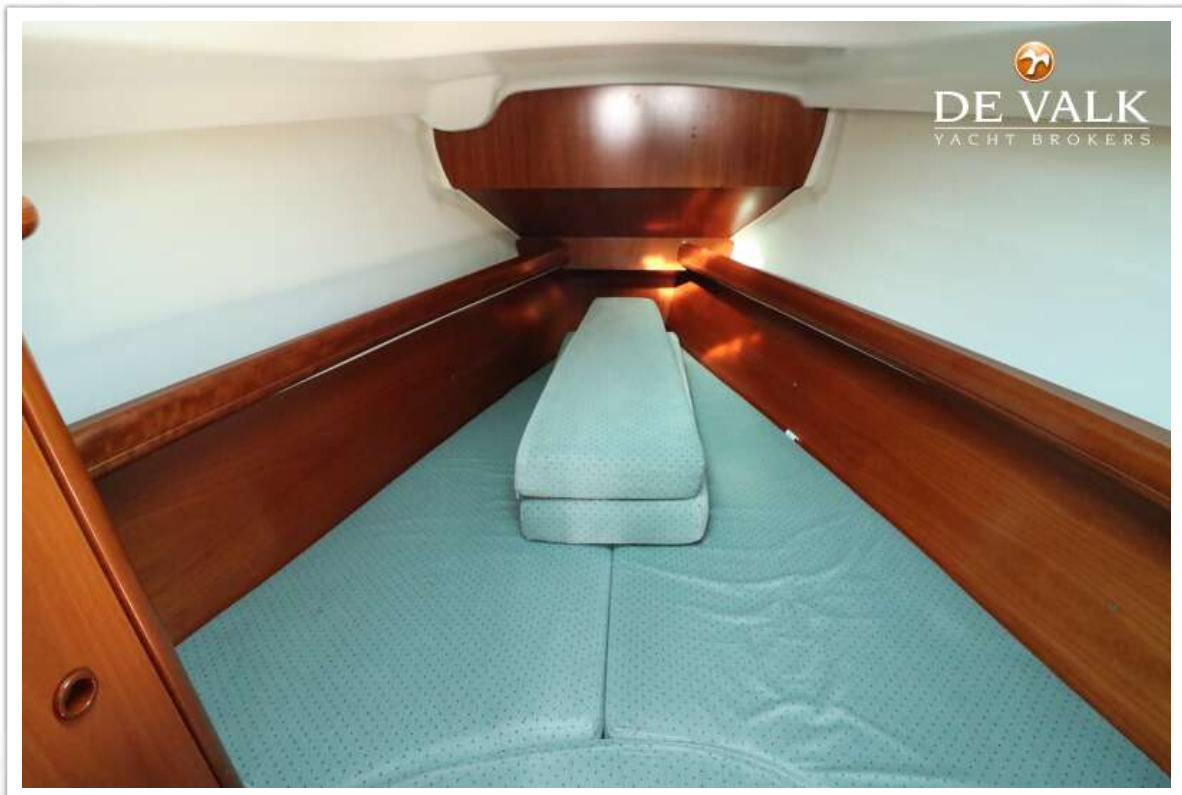
BENETEAU OCEANIS CLIPPER 311



BENETEAU OCEANIS CLIPPER 311



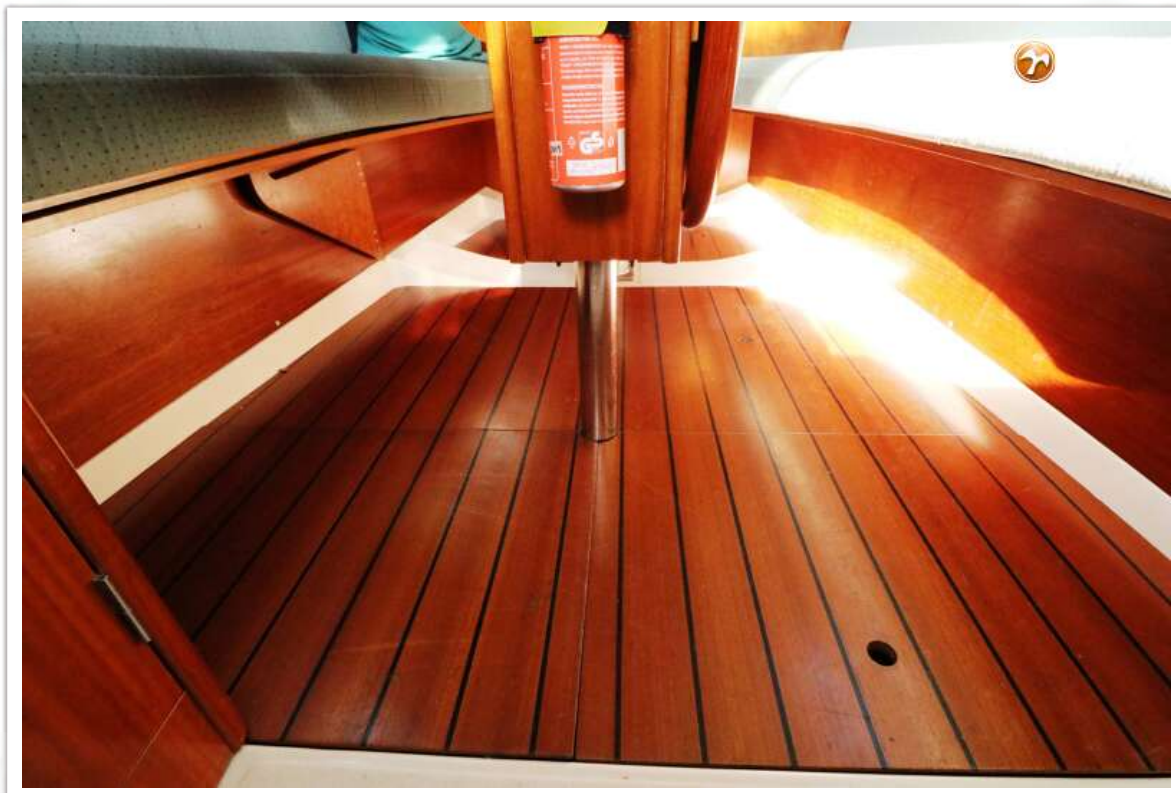
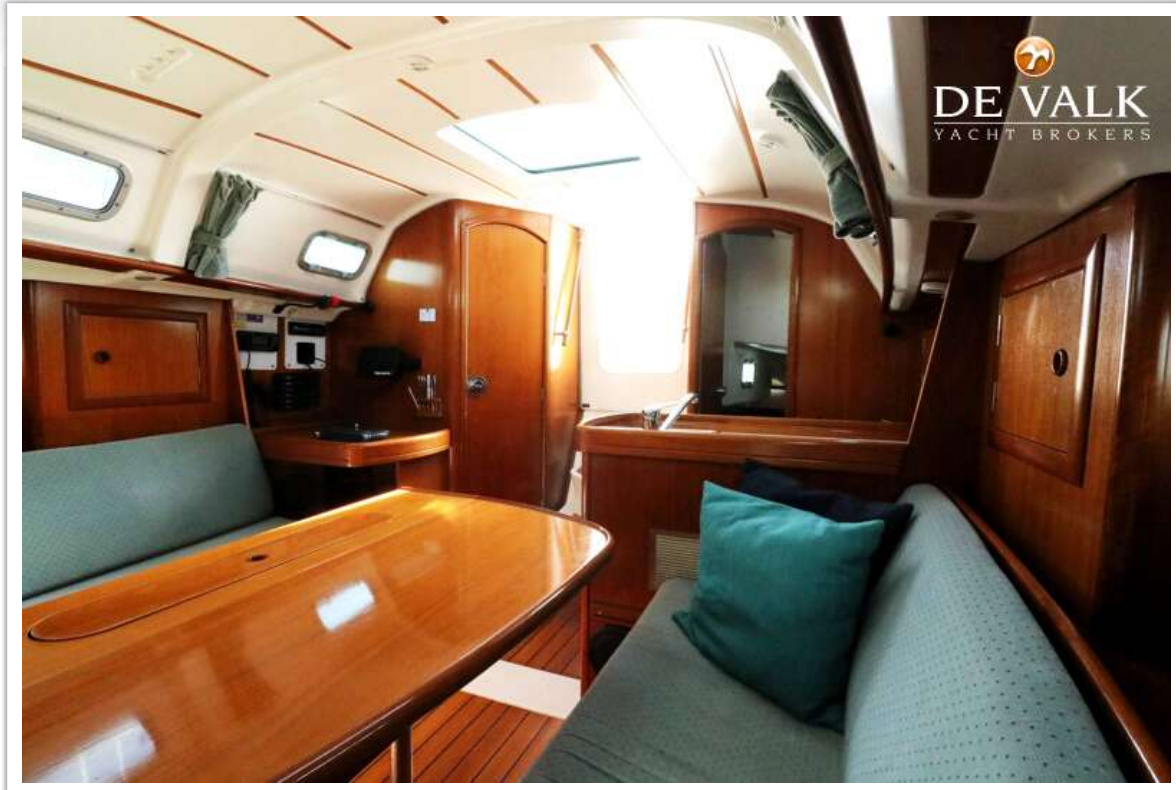
BENETEAU OCEANIS CLIPPER 311



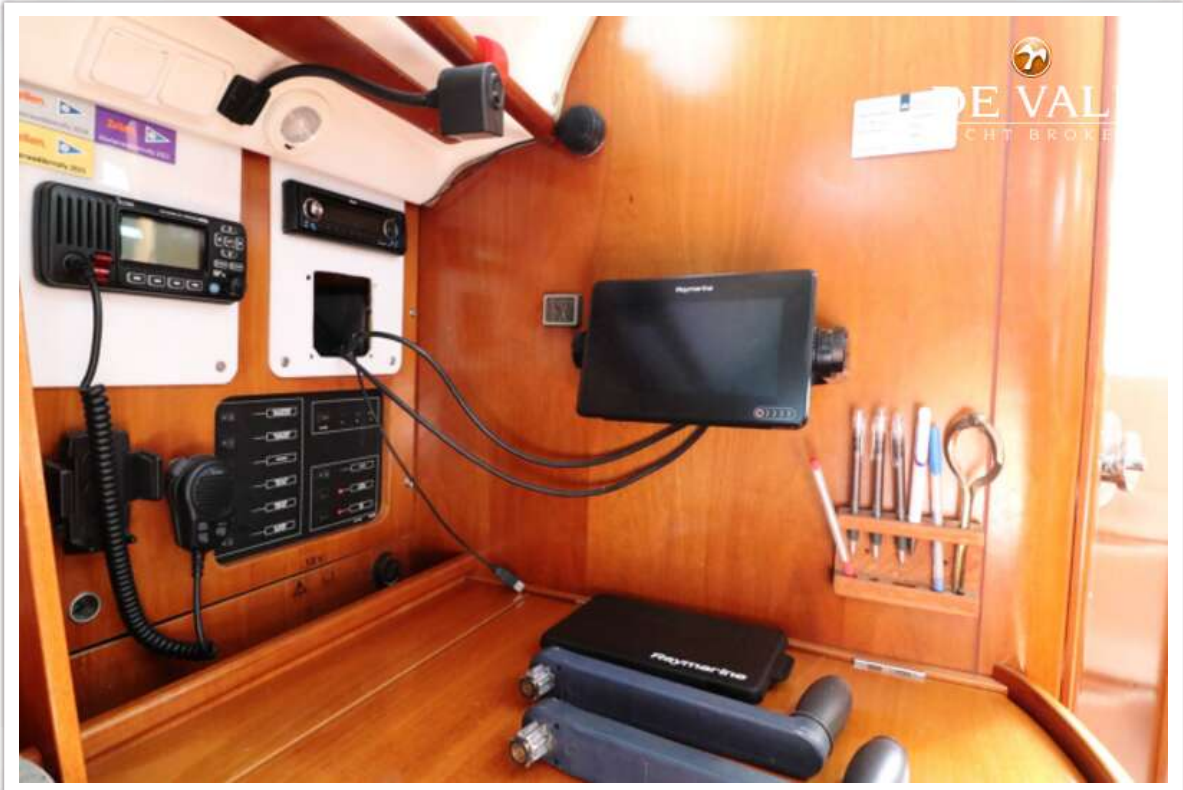
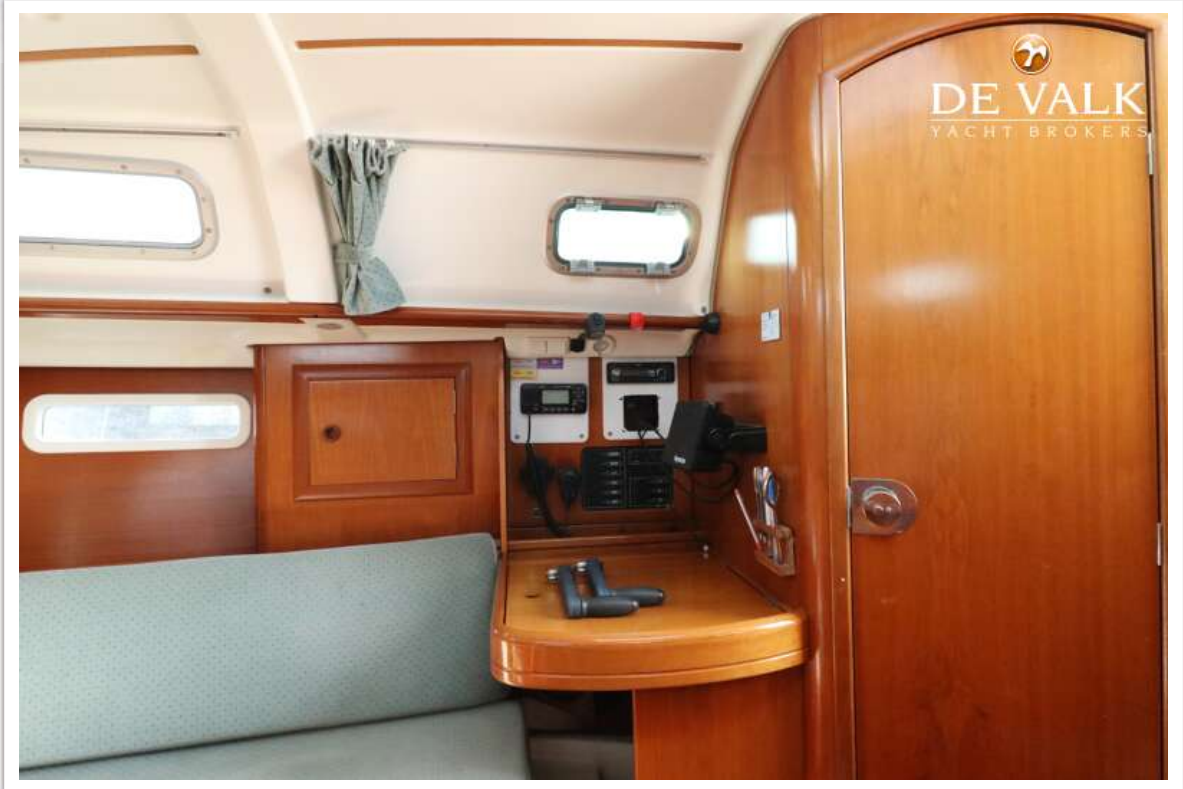
BENETEAU OCEANIS CLIPPER 311



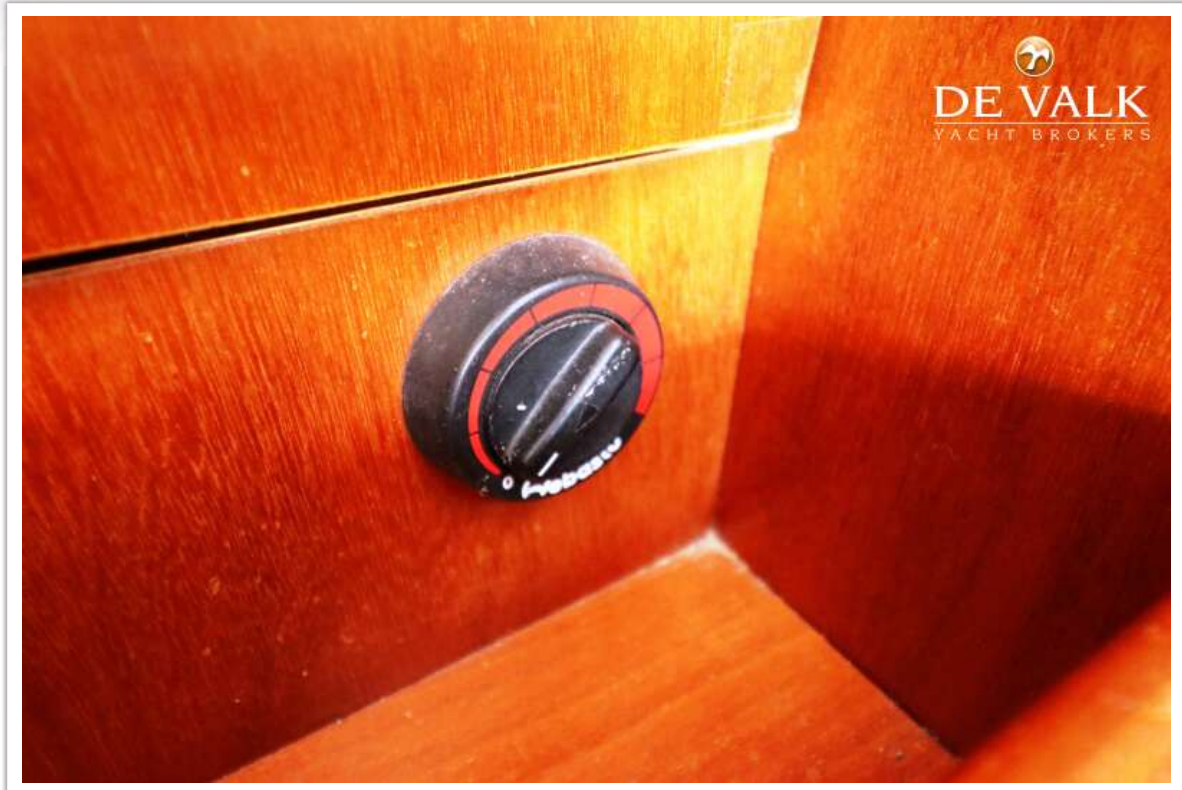
BENETEAU OCEANIS CLIPPER 311



BENETEAU OCEANIS CLIPPER 311



BENETEAU OCEANIS CLIPPER 311



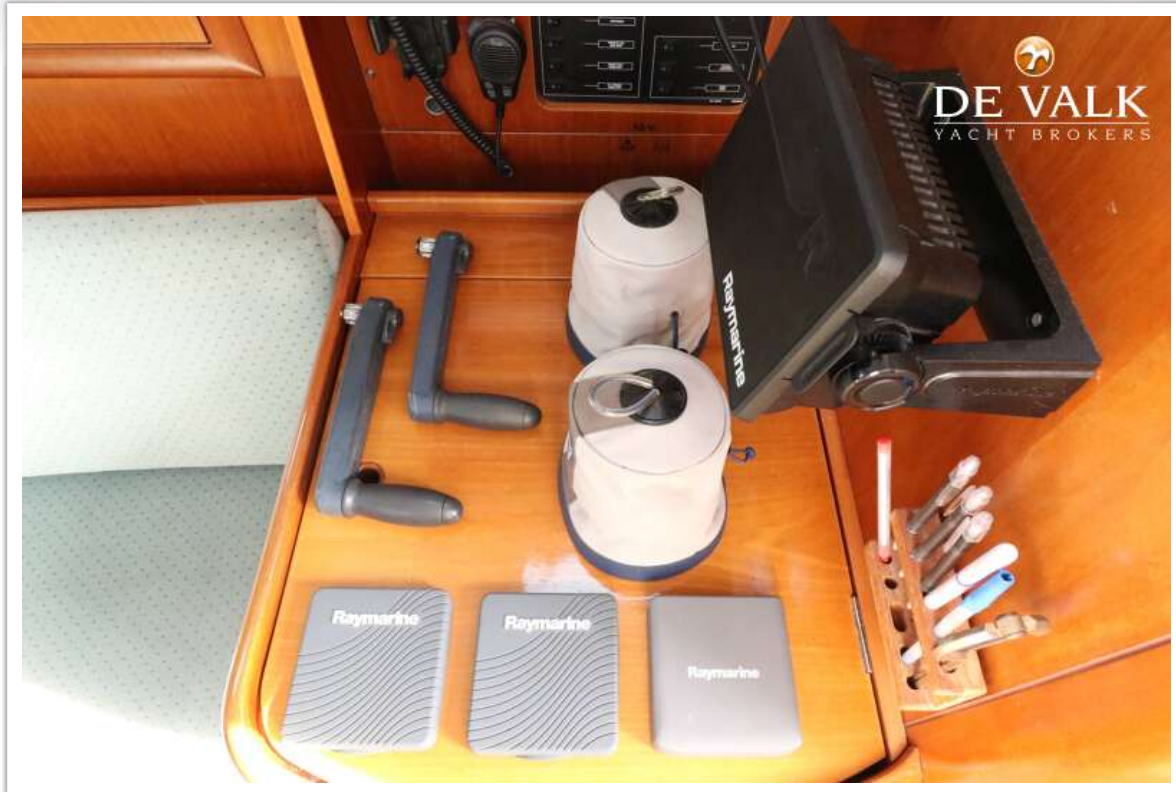
BENETEAU OCEANIS CLIPPER 311



BENETEAU OCEANIS CLIPPER 311



BENETEAU OCEANIS CLIPPER 311



BENETEAU OCEANIS CLIPPER 311



BENETEAU OCEANIS CLIPPER 311

