



DE VALK  
YACHT BROKERS



DOGGERSBANK 1400 MY



DE VALK  
YACHT BROKERS

BROKERAGE | CHARTER | BERTHS | FINANCE | INSURANCE | YACHT MANAGEMENT

## BROKER'S COMMENTS

This Dutch-designed and built Doggersbank 1400 MY is well maintained by it's current (2nd) owner. Although Doggersbank is already known as a sturdy, and seaworthy yacht, "Bien Mérité" has some extra renewings like new navigation equipment, generator and Kabola-heating. With these renewings and with her double glazed windows, she's is also ready to use for longer stays on board. She's equipped with 2 cabins and a convertible dinette to accomodate 6. The Doggersbank 1400 MY is located at our sales office on shore in Sint Annaland.

*Joris van de Rijt*

## SPECIFICATIONS

<b>Dimensions</b>	14.95 x 4.40 x 1.30 (m)	<b>Builder</b>	Doggersbank jachtbouw Woudsend
<b>Built</b>	1986	<b>Cabins</b>	2
<b>Material</b>	Steel	<b>Berths</b>	6
<b>Engine(s)</b>	1 x Volvo Penta MD70C diesel	<b>Hp/Kw</b>	145.00 (hp), 106.72 (kw)
<b>Asking price</b>	sold (VAT )	<b>Lying</b>	at sales office

## CONTACT

<b>Sales office</b>	De Valk Sint Annaland B.V.	<b>Telephone</b>	+31 (0)166 601 000
<b>Address</b>	Koelhuisweg 4 4697 RM Sint Annaland NL	<b>E-mail</b>	sintannaland@devalk.nl

## DISCLAIMER

These particulars are given in good faith as supplied but cannot be guaranteed.



## GENERAL

Model	DOGGERSBANK 1400 MY
Type	motor yacht
LOA (m)	14,95
LWL (m)	13,15
Beam (m)	4,40
Draft (m)	1,30
Air draft (m)	8,70
Air draft min (m)	3,40
Headroom (m)	1,91
Year built	1986
Builder	Doggersbank jachtbouw Woudsend
Country	The Netherlands
Designer	Vripack Yachting Sneek
Displacement (t)	19
Hull material	steel
Hull colour	blue
Hull shape	round-bilged
Superstructure material	aluminium
Rubbing strake	stainless steel
Deck material	steel
Deck finish	teak (new 2009)
Superstructure deck finish	teak
Antifouling (year)	2022
Window frame	aluminium
Window material	double glazing (new 2018)
Deckhatch	yes
Insulation	glasswool
Steadying sail with mast	Can be lowered
Fuel tank (litre)	steel 2400
Level indicator (fuel tank)	Gauge glass



Freshwater tank (litre)	stainless steel 1000
Level indicator (freshwater)	Defect
Blackwater tank (litre)	polyethylene
Level indicator (blackwater)	Not connected
Blackwater tank extraction	deck extraction + pump
Wheel steering	hydraulic
Outside helm position	hydraulic
More info on hull	Underwaterbody new epoxy primer in 2008
More info on paintwork	Hull painted in 2015 with Awlgrip
Extra info	Superstructure re-painted in 2008
Extra info	Woodwork exterior re-varnished in 2021
Extra info	Air draft (m) with sprayhood up: 3,61

## ACCOMMODATION

Cabins	2
Berths	6
Interior	teak
Floor	carpet + wood print
Aft deck	With 3 big lockers
Saloon	yes
Headroom saloon (m)	1,91
Heating	central hot water Kabola (new circa 2019)
Navigation center	yes
Chart table	yes
Aft Cabin	yes
Dinette to convert into berth	Near galley
Galley	Modified in 2008
Countertop	plastic
Sink	stainless steel
Cooker	calor gas Zanussi (2009)
Oven	Bosch Gourmet 2000



Fridge	2x (2009)
Freezer	In fridge
Hot water system	220V/engine/heating
Water pressure system	electrical
Crockery	yes
Owners cabin	French bed (new mattresses 2021)
Bed length (m)	2,00 x 1,60
Wardrobe	hanging/drawers/shelves
Bathroom	en suite
Toilet	en suite
Toilet system	electric
Wash basin	in the bathroom
Shower	en suite
Guest cabin 1	twin single
Bed length (m)	1,95 x 0,65
Wardrobe	hanging and shelves
Toilet	en suite
Toilet system	electric
Wash basin	at the toilet

## MACHINERY

No of engines	1
Make	Volvo Penta
Type	MD70C
HP	145
kW	106.72
Fuel	diesel
Year installed	1986
Maximum speed (kn)	8
Cruising speed (kn)	7
Consumption (l/hr)	12



Engine hours	6085
Engine cooling system	freshwater heat exchanger
Drive	shaft
Engine controls	bowden cable
Gearbox	hydraulic
Secondary engine	diesel Volvo Penta D2-40 (new 2015) for emergency
Engine controls	bowden cable
Bowthruster	hydraulic
Propeller type	fixed + folding for Volvo Penta D2-40
Propeller blades	3 (main engine) + 2 (emergency engine)
Shaft lubrication	oilbath
Manual bilge pump	yes
Electric bilge pump	3x
Electrical installation	12V / 24V / 230V
Generator	Nanni GMS 7,5 kW (new 2015)
Running hours generator	295
Start battery	2x 230 Ah (2021)
Service battery	4x 230 Ah (2021)
Generator battery	1x (2017)
Battery monitor	Mastervolt Easyview 5
Battery charger	Seperate 12V charger for generator battery
Battery charger/inverter	Mastervolt mass combi ultra 24/3500-100
Shorepower	with cable
Insulation transformer	Mastervolt (defect)
Stabilizers	Koop Nautic TwinChannel with fins under swimming platform
Extra info	Watertight door to engine room

## NAVIGATION

Electric compass	Via autopilot
Depth sounder/log	Simrad inside + outside (new 2020)
Windset	Simrad inside + outside (new 2020)



VHF	Simrad HS90 (new 2020)
VHF handheld	Simrad HS35 (new 2020)
Autopilot	Simrad AP44 (new 2020)
Rudder angle indicator	On autopilot
Radar	Simrad HALO24 (new 2020)
Radar/plotter	Simrad NSS Evo3 7 & 9 inch (new 2020)
Navtex	ICS Nav 6
Electronic chart(s)	yes
AIS transponder	Simrad Nais 500 (new 2020)
Navigation lights	yes
Searchlight	yes

## EQUIPMENT

Fixed windscreen	yes
Sprayhood	(new 2019)
Bathing platform	yes
Boarding ladder	stainless steel
Transom door	yes
Gangway	yes
Anchor	Delta
Anchor chain	30 meter
Windlass	electrical
Deck wash	On swimming platform (pump defect)
Davits	stainless steel Simpson Serie 7 (new circa 2015, needs repair)
Davits controls	electrical
Sea railing	stainless steel
Grab rail (superstructure)	teak
Railing side opening gates	2x
Pulpit	Needs to be straightened
Life raft (pers)	container 4 (new circa 2015)
Lifejackets	yes



# DOGGERSBANK 1400 MY

Lifebuoy	yes
Wiper	3x inside + 2x outside
Horn	yes
Fenders	yes
Mooring lines	yes
Spare parts	yes
Tools	yes
Alarm system	E-marine
Radio-cd player	yes
Speakers in salon	yes
Clock - barometer	yes
Fire extinguisher	2x (needs service / replacement)

## RIGGING

Staysail	yes
----------	-----





# DOGGERSBANK 1400 MY



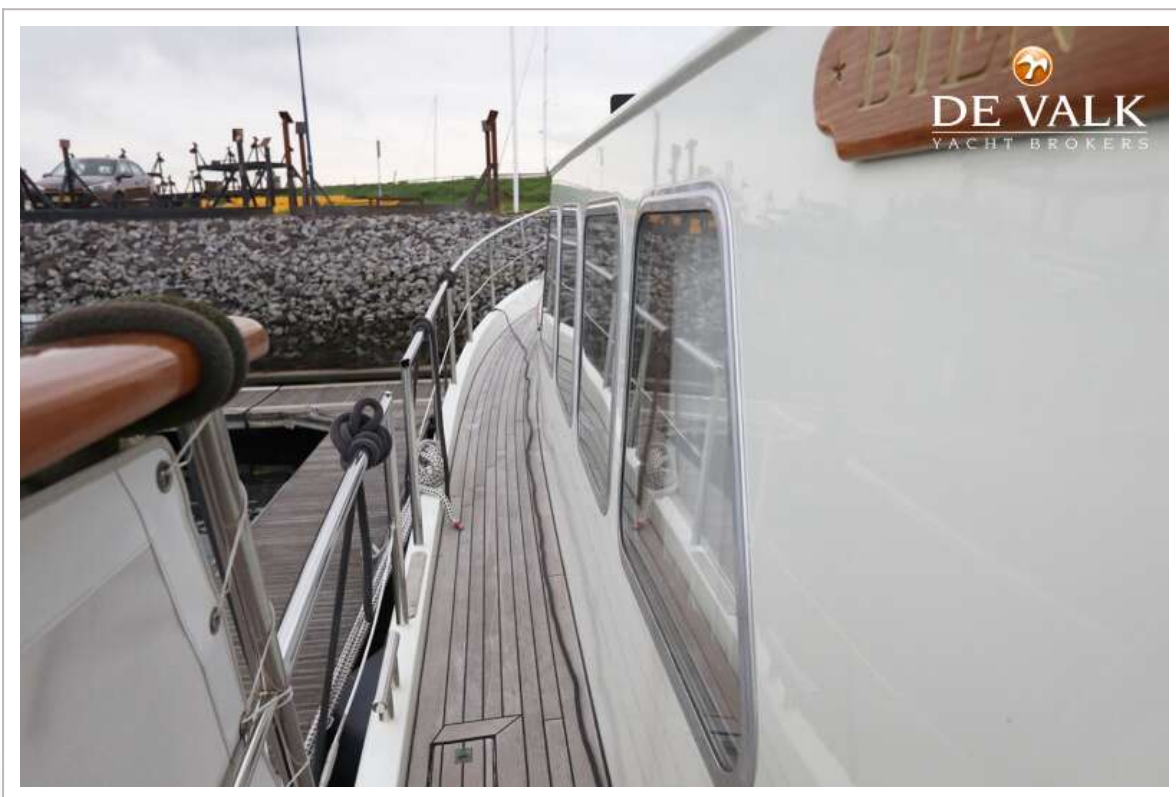


# DOGGERSBANK 1400 MY





# DOGGERSBANK 1400 MY



# DOGGERSBANK 1400 MY





# DOGGERSBANK 1400 MY



# DOGGERSBANK 1400 MY









# DOGGERSBANK 1400 MY

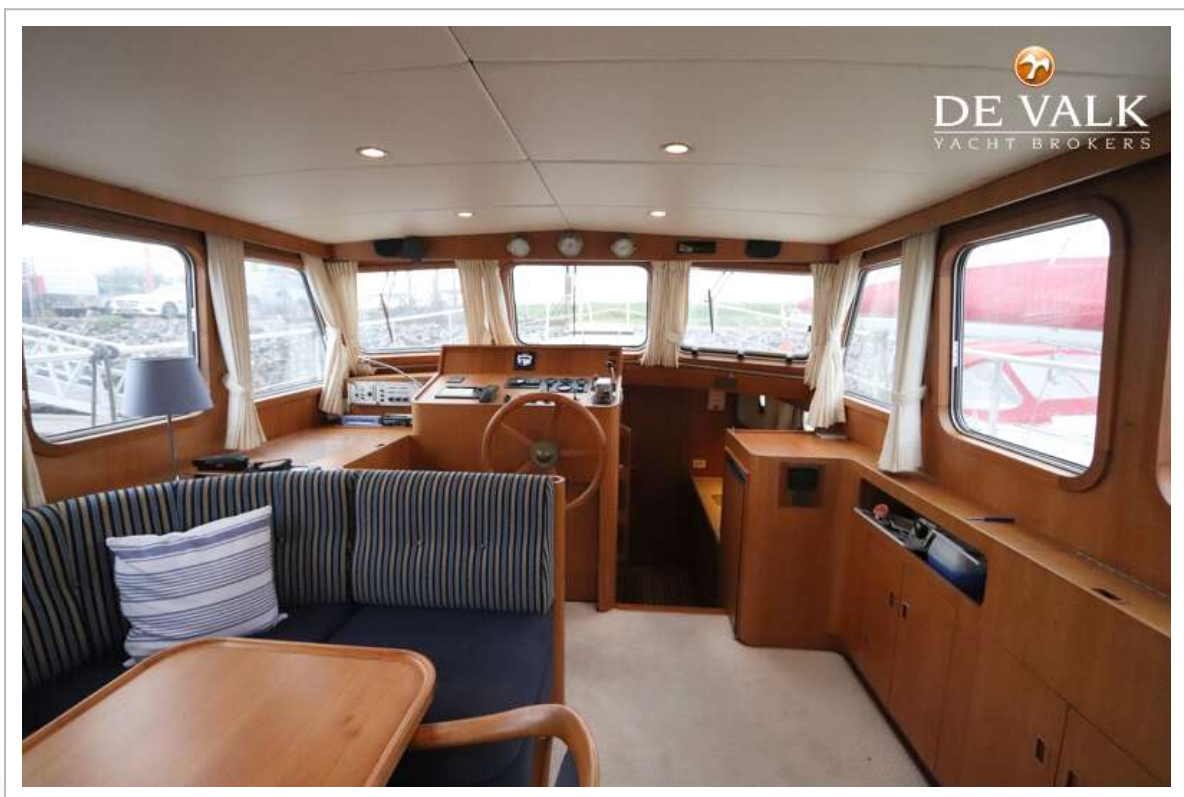
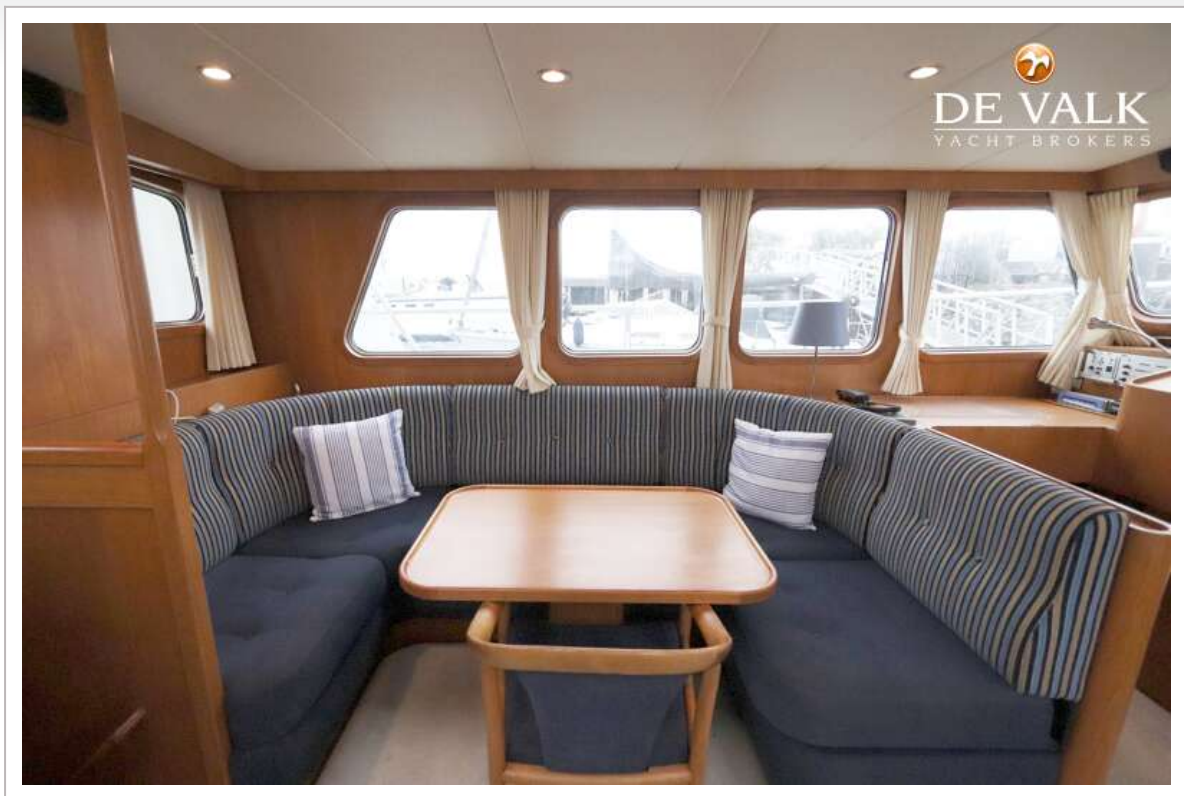


# DOGGERSBANK 1400 MY





# DOGGERSBANK 1400 MY

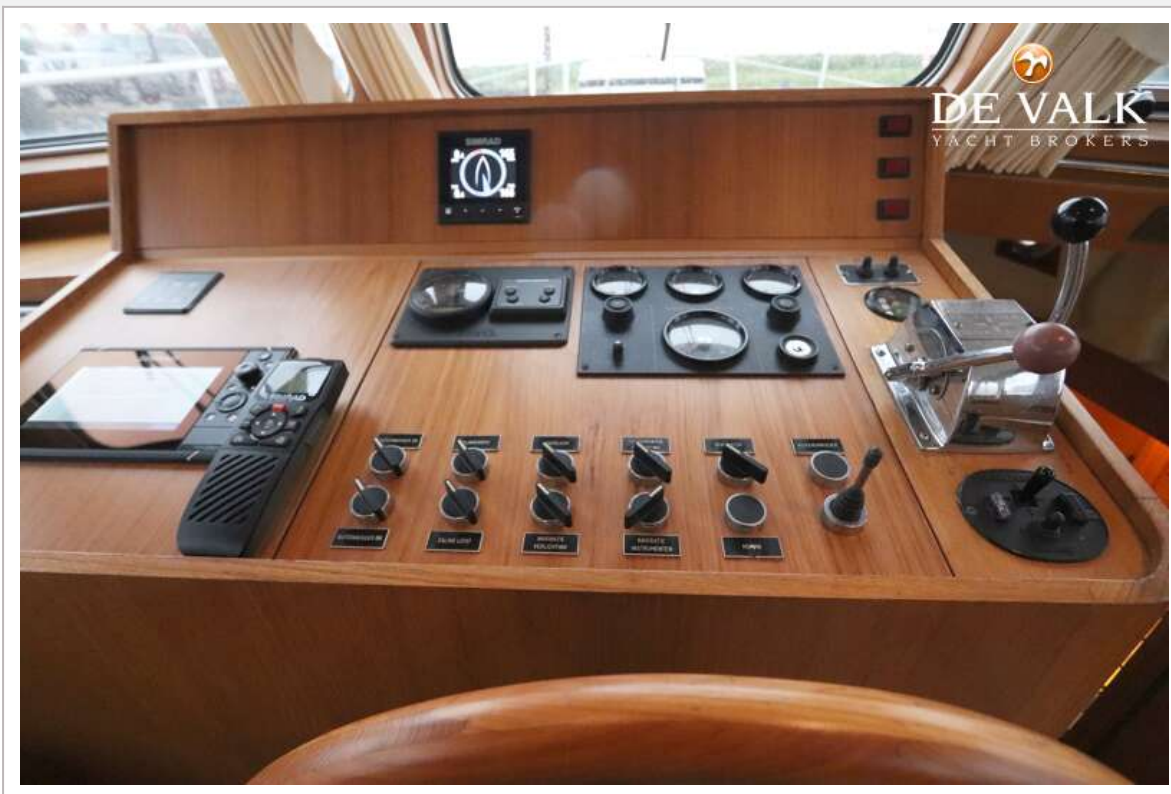


# DOGGERSBANK 1400 MY





# DOGGERSBANK 1400 MY

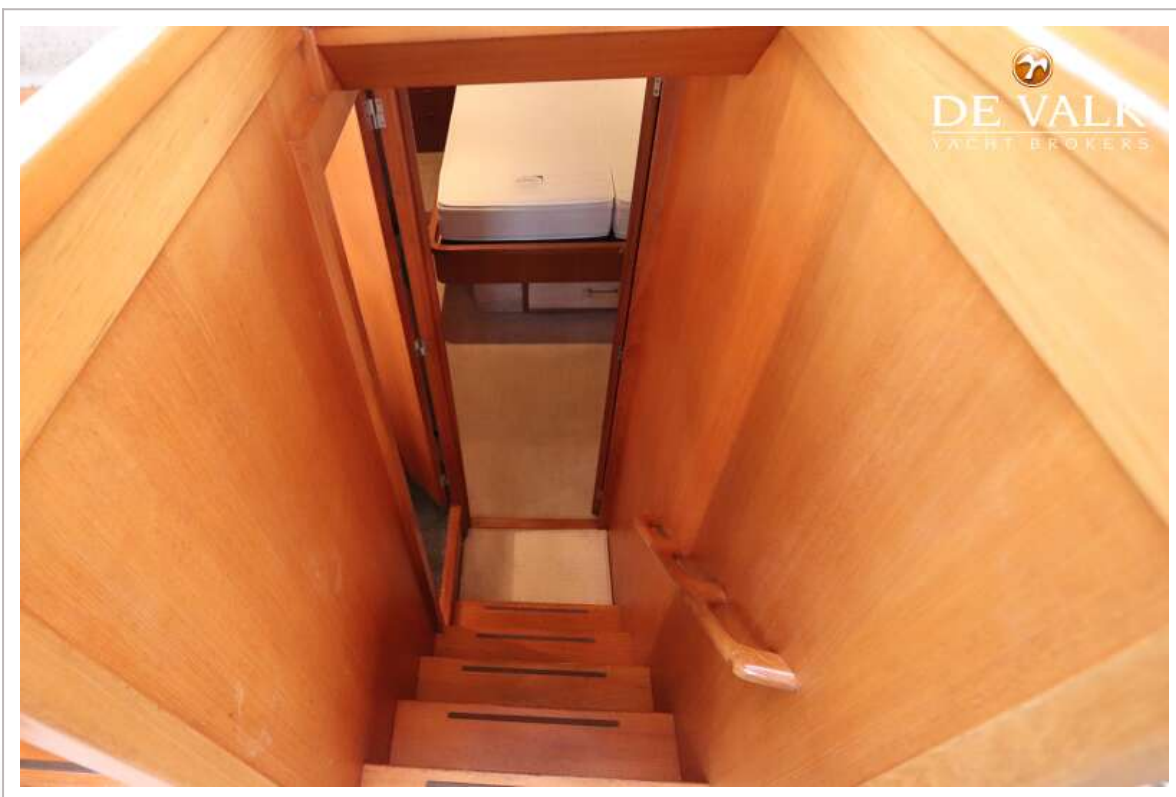


# DOGGERSBANK 1400 MY





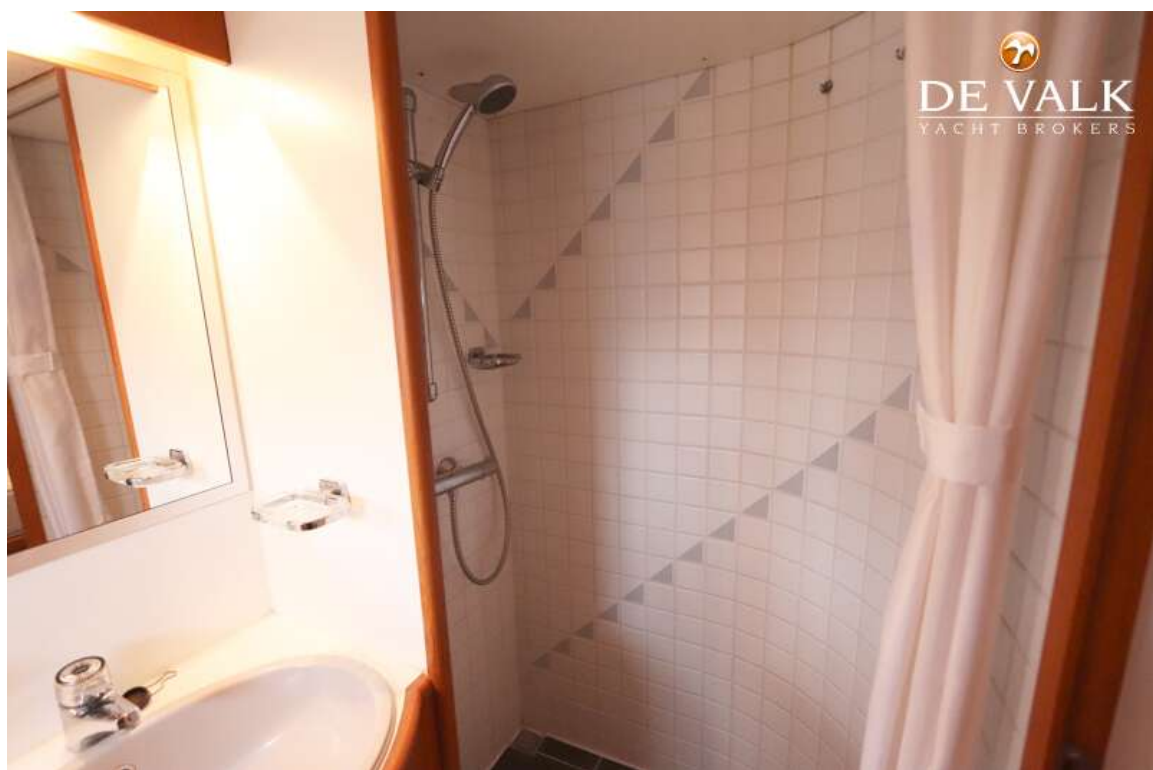
# DOGGERSBANK 1400 MY



# DOGGERSBANK 1400 MY













# DOGGERSBANK 1400 MY

