



DE VALK
YACHT BROKERS



HOEK DESIGN TRULY CLASSIC 75



DE VALK
YACHT BROKERS

HOEK DESIGN TRULY CLASSIC 75

BROKER'S COMMENTS

Hoek design Truly Classic 75, Braveheart of Sark, is a beautiful modern classic built to sail in style and comfort with or without crew. She is extremely well maintained by her loving 1st and only owner. Her caring crew has her ready to go and sail her for the new owner to go anywhere in the world. The Hoek design Truly Classic 75, Braveheart of Sark has full hydraulic furling sails and foot operated winches for easy sail handling and a Vario Pitch propellor with hydraulic bow thruster and windlass for manoeuvring in small places. For comfort she has all the luxury of home.

Hans Visser

SPECIFICATIONS

Dimensions	23.00 x 5.50 x 2.60 (m)	Builder	Holland Composites / De Ruiter
Built	1997	Cabins	3
Material	Composite	Berths	8
Engine(s)	1 x MTU 6R 099 TE91 diesel	Hp/Kw	240.00 (hp), 176.64 (kw)
Asking price	€ 1.400.000 (VAT Not paid)	Lying	elsewhere / Not at sales office

CONTACT

Sales office	De Valk Hindeloopen B.V.	Telephone	+31 514 52 40 00
Address	Oosterstrand 1 8713 JS Hindeloopen NL	E-mail	hindeloopen@devalk.nl

DISCLAIMER

These particulars are given in good faith as supplied but cannot be guaranteed.



HOEK DESIGN TRULY CLASSIC 75

GENERAL

Model	HOEK DESIGN TRULY CLASSIC 75
Type	sailing yacht
LOA (m)	23,00
LWL (m)	16,54
Beam (m)	5,50
Draft (m)	2,60
Air draft (m)	31,31
Year built	1997
Builder	Holland Composites / De Ruiter
Country	The Netherlands
Designer	Andre Hoek
Displacement (t)	48
Ballast (tonnes)	16 t.
CE norm	A
Hull material	composite
Hull colour	blue Awlgrip Awlcraft 2000 Flag Blue
Hull shape	round-bilged
Keel type	yes
Superstructure material	mahogany
Deck material	composite
Deck finish	teak
Superstructure deck finish	teak
Cockpit deck finish	teak
Dorades	16
Deckhatch	2 + 6 koekoek
Portholes	4
Fuel tank (litre)	GRP Port - 700 ltr. Stb fwd - 550 ltr. Stb aft - 350 ltr.
Level indicator (fuel tank)	Oceanic Systems offshore 3345
Fuel daytank (litre)	GRP 100 ltr. in Engine room
Level indicator (daytank)	Sight glass



Freshwater tank (litre)	GRP Port 800 ltr. Stb 800 ltr.
Level indicator (freshwater)	Oceanic Systems offshore 3345
Blackwater tank (litre)	GRP 370 ltr.
Level indicator (blackwater)	yes
Blackwater tank extraction	pump
Greywater tank (litre)	GRP 250 ltr.
Level indicator (greywater)	yes
Wheel steering	cable steering Edson

ACCOMMODATION

Cabins	3
Berths	8
Crew cabin	Storage
Interior	Honduras Mahogany
Floor	Eiken with carpet
Pilot house/deck saloon	yes
Saloon	yes
Headroom saloon (m)	1,95 mtr.
Heating	Marine air systems
Air-conditioning	Marine air systems 6x Air handlers + thermostats
Navigation center	yes
Chart table	yes
Aft Cabin	2x
Galley	yes
Countertop	corian
Sink	stainless steel
Cooker	calor gas Force10 4 burners
Oven	In cooker
Extractor	Miele
Gas alarm	Nereus with 3 waterproof sensors
Microwave/oven combi	Panasonic



Fridge	2x 150 & 160 ltr. + temperature display
Freezer	1x 130 ltr. + temperature display 1x fridge/freezer 60 ltr.
Hot water system	2x boiler Isothemp one shorepower/genarator one ME
Water pressure system	electrical
Manual and/or foot pump	yes
Owners cabin	double bed Forward cabin
Bed length (m)	> 2 mtr.
Wardrobe	hanging/drawers/shelves
Bathroom	en suite
Toilet	Raritan
Toilet system	electric
Wash basin	yes
Shower	yes
Guest cabin 1	double bed + single bed
Bed length (m)	2 mtr.
Wardrobe	drawers and shelves
Bathroom	en suite
Toilet	Raritan
Toilet system	electric
Wash basin	yes
Shower	yes
Guest cabin 2	twin single
Bed length (m)	2 mtr.
Wardrobe	drawers and shelves
Bathroom	yes
Toilet	Jabsco daytoilet
Toilet system	electric
Wash basin	yes
Shower	yes

MACHINERY



HOEK DESIGN TRULY CLASSIC 75

No of engines	1
Make	MTU
Type	6R 099 TE91
HP	240
kW	176.64
Fuel	diesel
Year of overhaul	May 2018 at 10355 hours
Maximum speed (kn)	11
Cruising speed (kn)	9
Consumption (l/hr)	11
Engine hours	11500
Engine cooling system	freshwater heat exchanger
Drive	shaft
Shaft seal	yes
Engine controls	electrical
Gearbox	hydraulic Twin Disk Full rebuilt dec 2017-may 2018
Bowthruster	hydraulic Naiad 12HT 38hp
Exhaust	watercooled
Propeller type	Hundested VP4 FR-EL with VP5 Prop Pitch Propeller
Propeller blades	850mm - 4 blade
Propeller shaft material	stainless steel 80mm
Shaft lubrication	grease
Manual bilge pump	2x Whale Gusher 30 & Edson 258L
Electric bilge pump	8x Rule 500 to 3700 pumps
Bilge alarm	Yes
Electrical installation	24 / 220 volt
Generator	Northern Lights N844L
Running hours generator	4612
Batteries	supplies the hydraulics and the inverter 12x 2V Gel 750Ah 24V replaced 01-2020
Start battery	2x 12V Exide Gel 200Ah 24V replaced 09-2018
Service battery	12x 2V Gel 750Ah 24V replaced 01-2020



Generator battery	1x 12V - 70Ah Varta new 07/2020
Battery charger	2x Mastervolt Chargemaster 24/100-3
Inverter	Mastervolt Mass sine wave 24/2500
Shorepower	with cable
Watermaker	HEM powered by generator Not in working order

NAVIGATION

Compass	Rigel Poseidon
Electric compass	Furuno FG500
Multi control display	3x B&G Hydra 2000 3x B&G Hydra 2
Windset	B&G wind angle at helm
VHF	Simrad RS87 & ICOM M802
VHF handheld	2 units
Autopilot	Simrad Auto Pilot (2x display) back up B&G Hydra Pilot
Radar	Raymarine 24HD Color fitted 04-2018
GPS	Handheld
Radar/GPS/plotter	2x Raymarine GS125 MFD new 2018
Electronic chart(s)	Micro SD card with navionics
AIS transceiver	Raymarine AIS950
EPIRB	McMurdo Smartfind E5
Navigation lights	yes
Searchlight	yes
Extra info	Skipper Wideye FB150

EQUIPMENT

Fixed hardtop	Over cockpit
Cockpit cover	yes
Bimini	Fixed
Window cover	Covering over almost all wooden parts
Cockpit cushions	yes
Cockpit table	yes



HOEK DESIGN TRULY CLASSIC 75

Boarding ladder	yes
Gangway	Yes
Anchor	CQR Plough
Anchor chain	100 mtr.
Windlass	hydraulic Lewmar 4000
Capstan	Yes
Deck wash	Yes
Dinghy	yes
Outboard	yes
Outboard support	Yes + with hand-operated crane
Sea railing	Yes
Grab rail (superstructure)	teak
Railing side opening gates	Yes
Pushpit	yes
Pulpit	yes
Lifejackets	yes
Danbuoy	Jon Bouy MK5
Horn	air pressure
Radar reflector	yes
Fenders	yes
Mooring lines	yes
Spare parts	For almost anything
Tools	yes
TV	Sony
Radio-cd player	Sony
Surround Sound System	Sony home theatre system and TV
Cockpit speakers	And pilothouse
Speakers in salon	yes
Speakers in cabin	With kenwood radio in owners cabin
Clock - barometer	yes
Fire extinguisher	6x
Latest extinguisher survey	Replaced 27-07-2020



Auto extinguisher system

Seafire FG240 | fitted new 2018

RIGGING

Rigging

sloop-cutter

Standing rigging

Rod | last inspection 2022

Brand mast

Omohundro

Material mast

carbon | AwlGrip 2000 cream white

Spreaders

3 pair

Mainsail

Sanders

Stoway mast

Reckmann furler | Hydraulic

Genoa

Sanders

Genoa furler

Reckmann RF90/3 | Hydraulic

Spinnaker

Sanders

Staysail

Sanders

Staysail furler

Reckmann RF90/2 | Hydraulic

Self tacking jib installation

For staysail

Reefing System

main in-mast furling

Backstay adjuster

Navtec system 50 manual hydraulic

Boomvang

Navtec system 50 manual hydraulic

Primary sheet winch

2x Lewmar 66 Ocean Series 2 speed self tailing for main sheet and staysail | Hydraulic | overhauled 2018

Secondary sheet winch

2x Lewmar 66 Ocean Series 2 speed self tailing for running backstays | overhauled 2018

Genoa sheetwinches

2x Lewmar 88 Ocean Series 2 speed self tailing | Hydraulic | overhauled 2018

Halyard winches

2x Lewmar 66 and 2x Lewmar 54 Ocean Series 2 speed self tailing on fore deck

Reefing winch

1x Lewmar 66 Ocean Series 2 speed self tailing for mainsail outhaul | Hydraulic | overhauled 2018

Spi-pole

carbon + Reaching strut

Extra info

Lewmar Commander 400 (custom) powerpack running Hydraulic for windlass and hydraulic sail functions



HOEK DESIGN TRULY CLASSIC 75



HOEK DESIGN TRULY CLASSIC 75



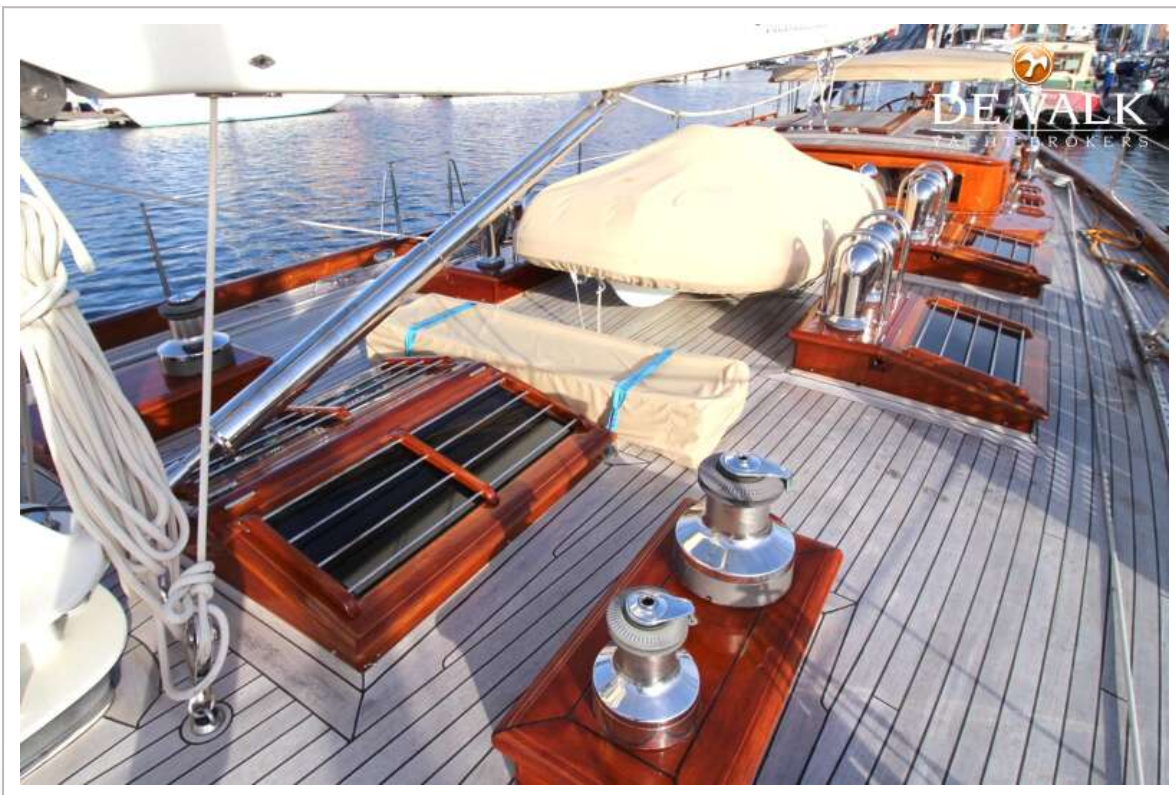
HOEK DESIGN TRULY CLASSIC 75



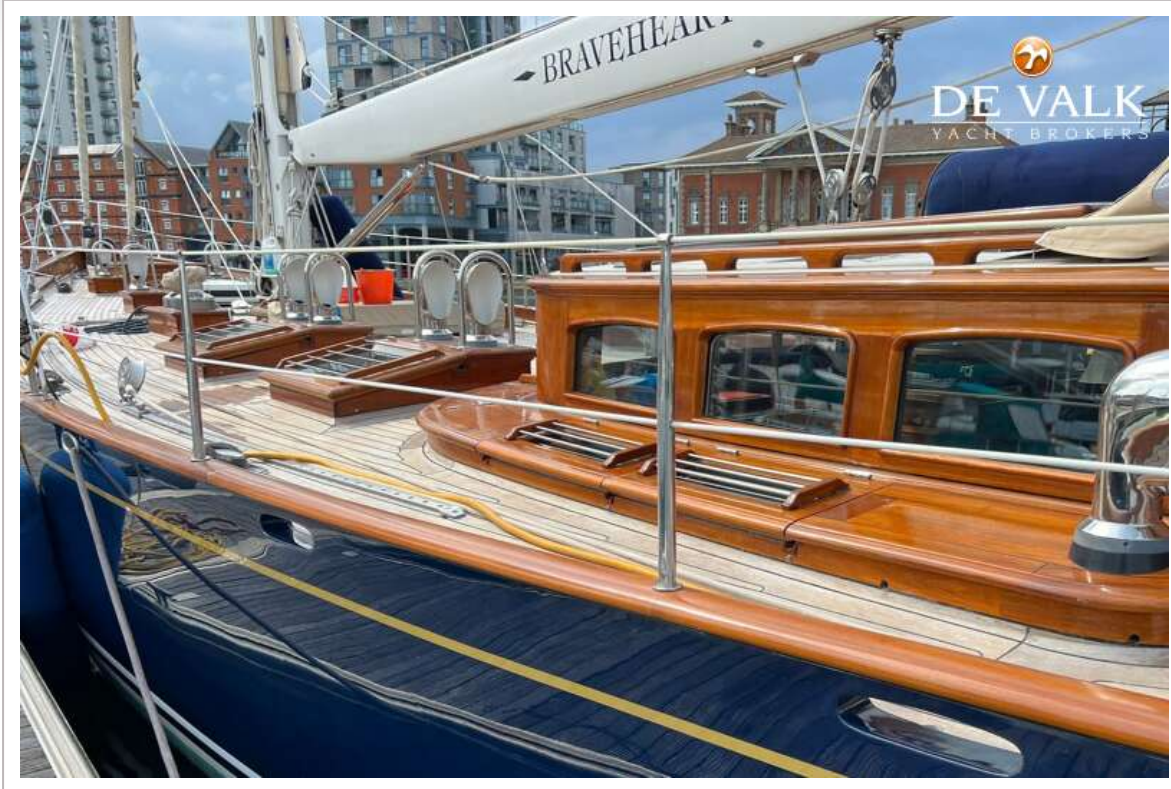
HOEK DESIGN TRULY CLASSIC 75



HOEK DESIGN TRULY CLASSIC 75



HOEK DESIGN TRULY CLASSIC 75



HOEK DESIGN TRULY CLASSIC 75



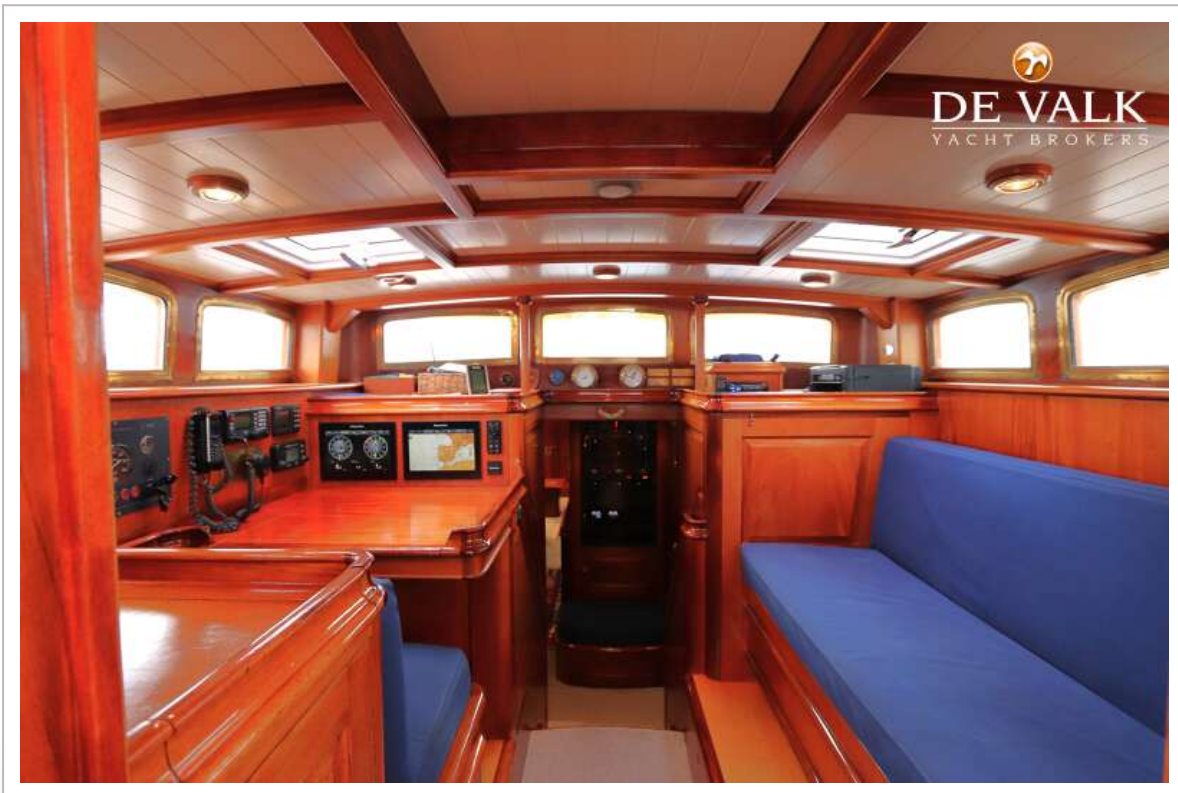
HOEK DESIGN TRULY CLASSIC 75



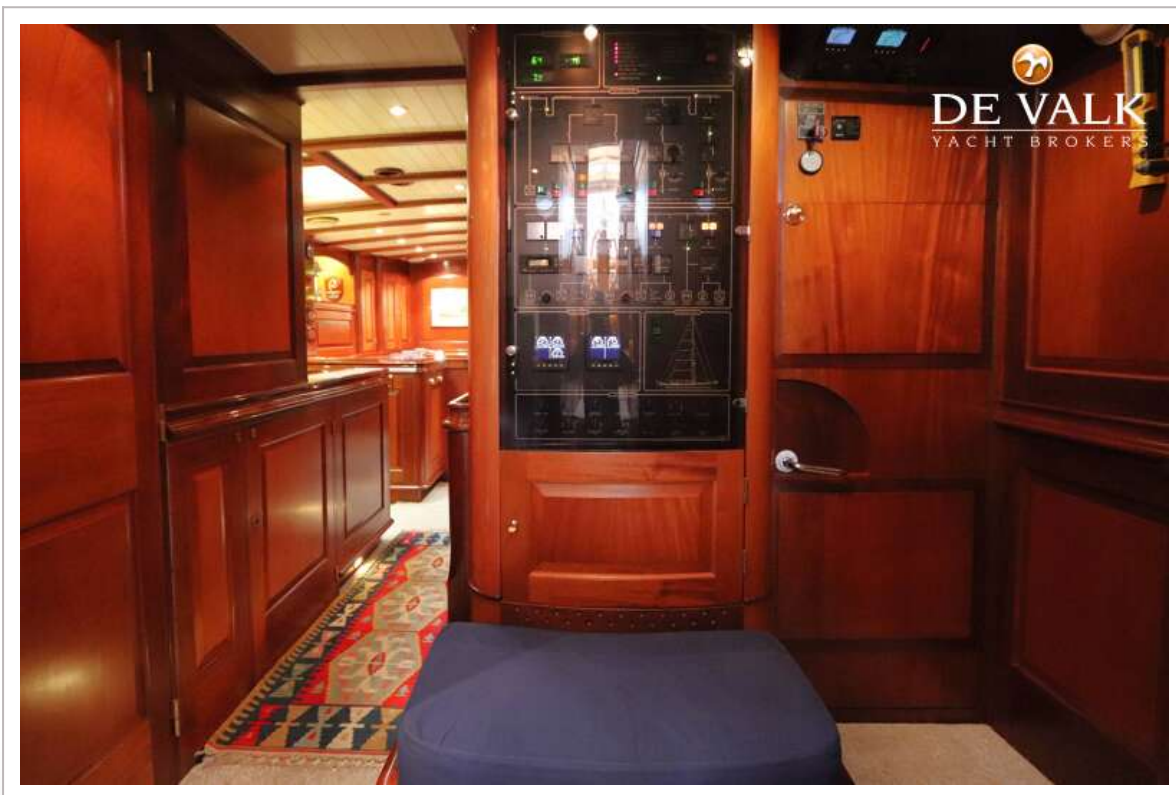
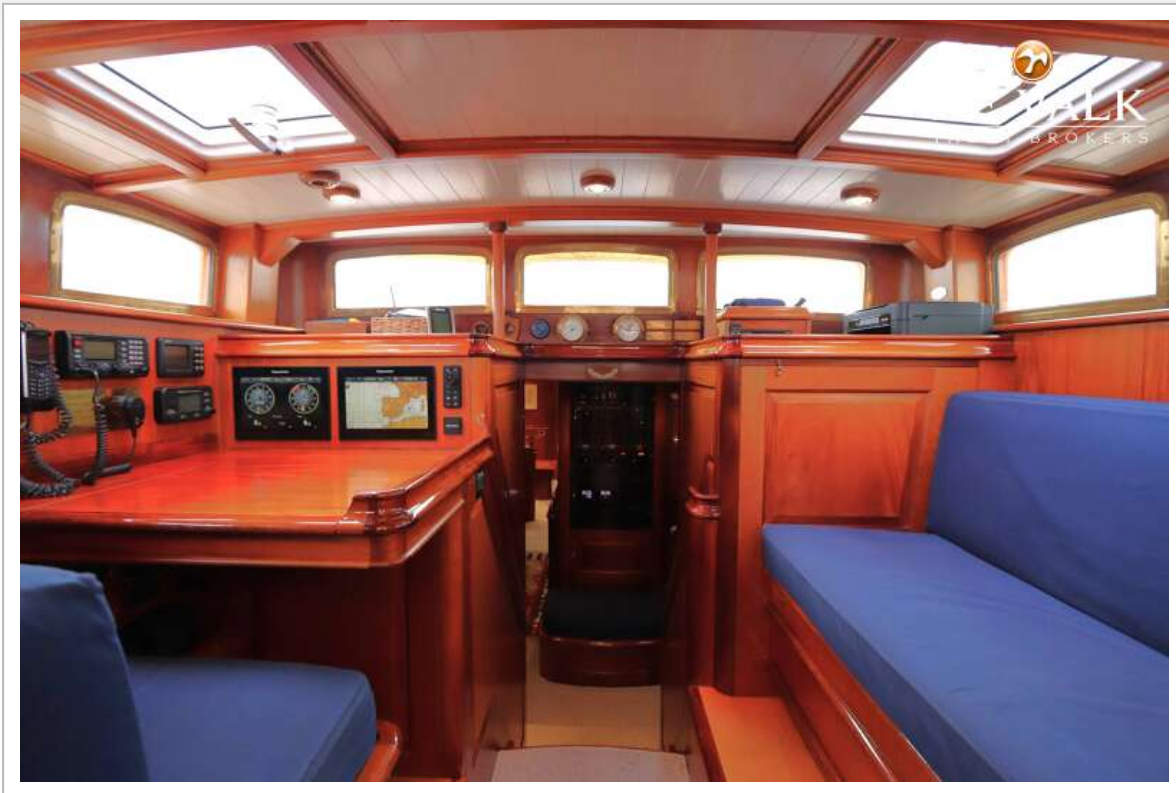
HOEK DESIGN TRULY CLASSIC 75



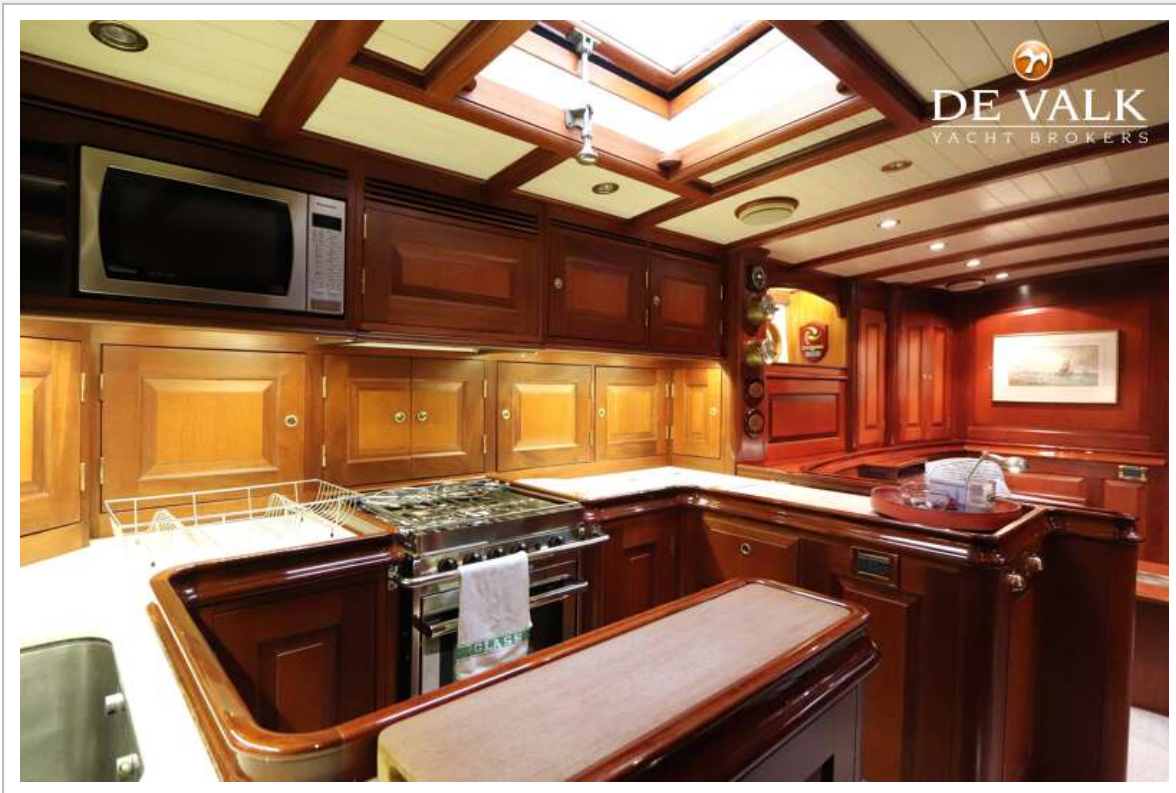
HOEK DESIGN TRULY CLASSIC 75



HOEK DESIGN TRULY CLASSIC 75



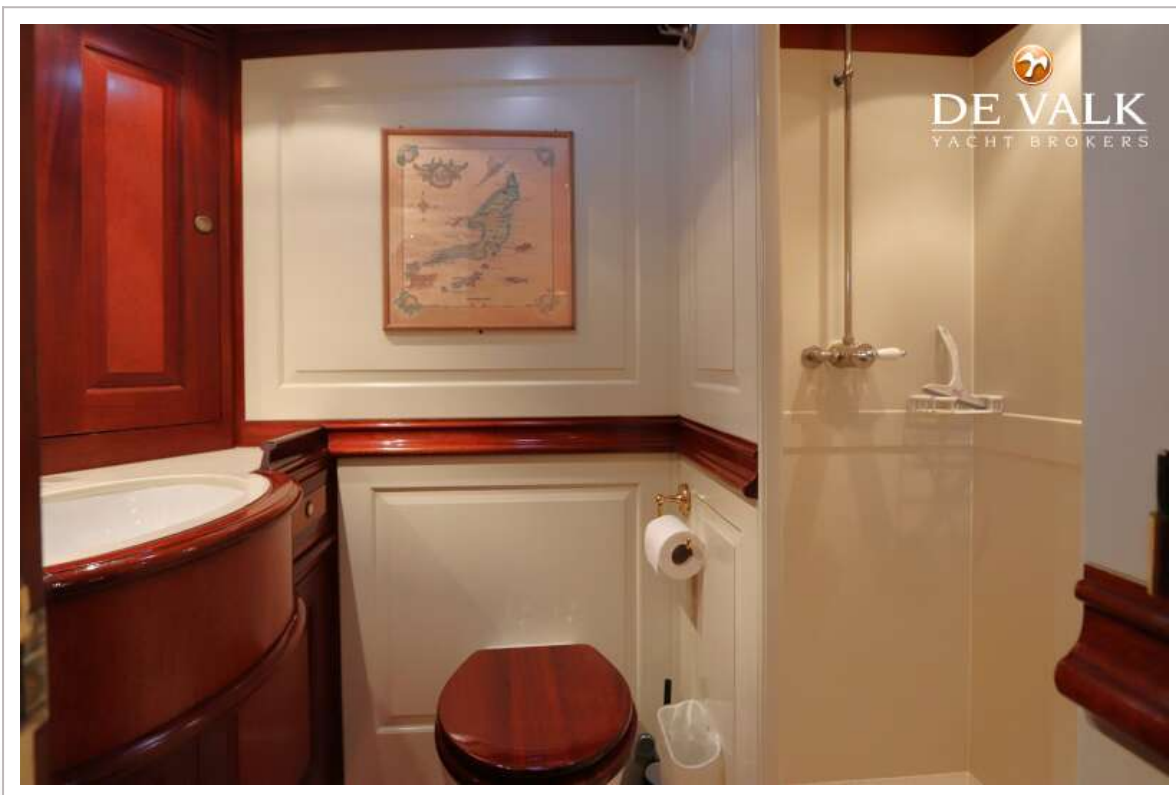
HOEK DESIGN TRULY CLASSIC 75



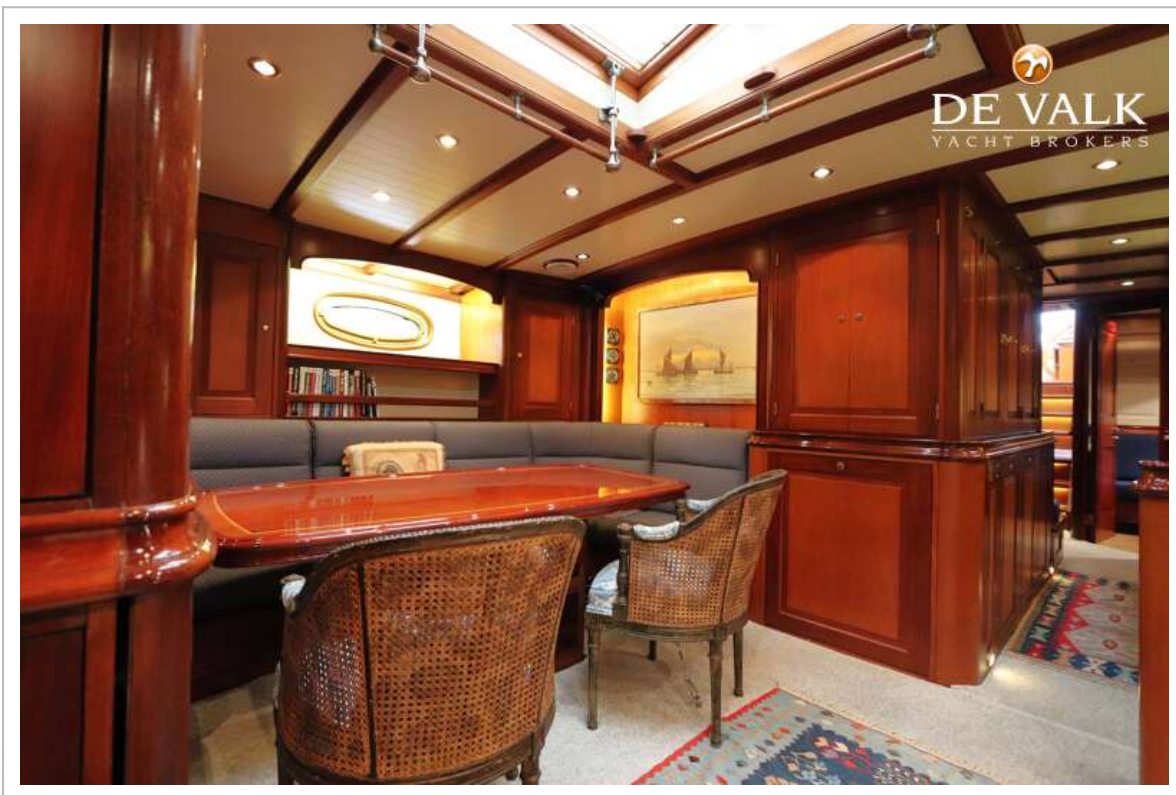
HOEK DESIGN TRULY CLASSIC 75



HOEK DESIGN TRULY CLASSIC 75



HOEK DESIGN TRULY CLASSIC 75



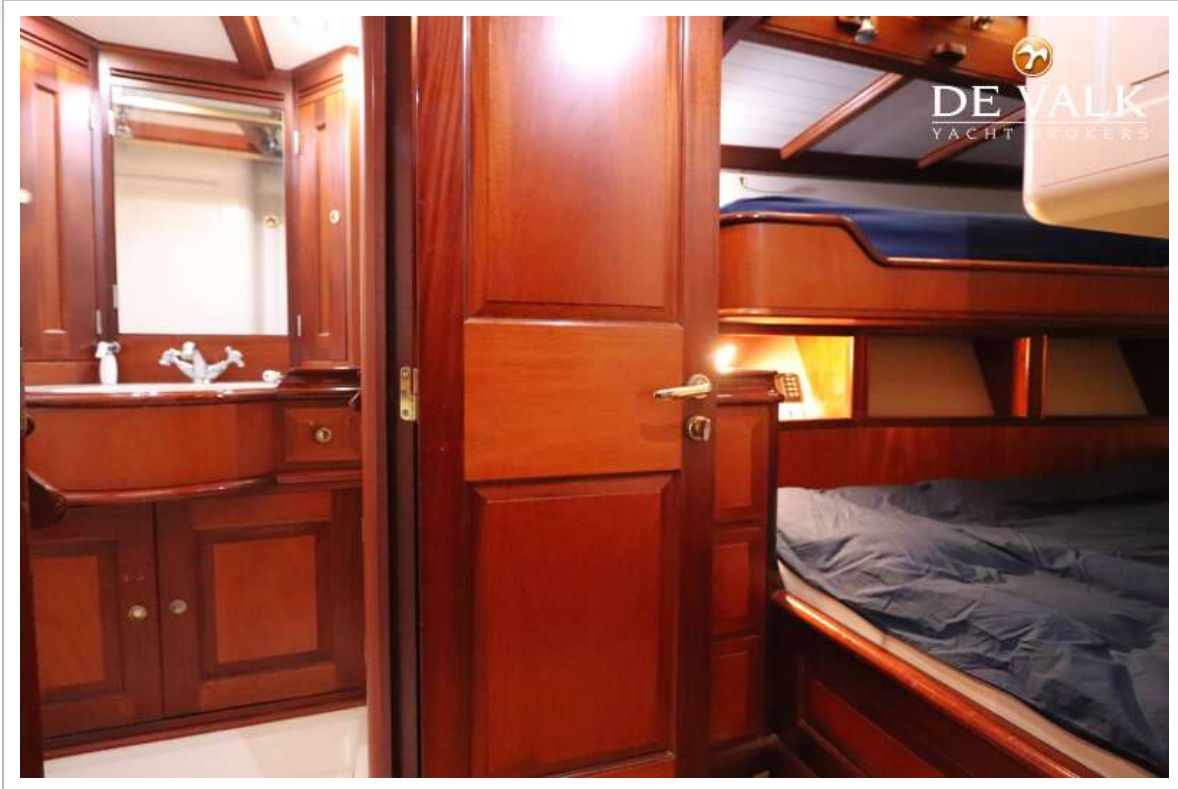
HOEK DESIGN TRULY CLASSIC 75



HOEK DESIGN TRULY CLASSIC 75



HOEK DESIGN TRULY CLASSIC 75



HOEK DESIGN TRULY CLASSIC 75

