



## SOUTHERLY 135



# SOUTHERLY 135

## BROKER'S COMMENTS

Very nice and well maintained original Southerly 135, built under Lloyds CE certification category A, with swing keel that makes its draft variable from 0.90 / 2.90 m. Thanks to her keel she comfortably sails on outside and inland waterways and can easily be beached. This will considerably increase your sailing area ! She is a true world class cruising yacht capable of fast blue water passage making. The Southerly 135 can be easily sailed by two people. Halyard and reefing lines are fed back through the coach roof and the self tailing winches are positioned within the cockpit.

*Reinoud Bicker Caarten*

## SPECIFICATIONS

<b>Dimensions</b>	13.50 x 4.03 x 0,90 / 2.90 (m)	<b>Builder</b>	North shore Yachts Ltd
<b>Built</b>	1989	<b>Cabins</b>	3
<b>Material</b>	GRP	<b>Berths</b>	6
<b>Engine(s)</b>	1 x Yanmar HTE 4 JH 2G diesel	<b>Hp/Kw</b>	80.00 (hp), 58.88 (kw)
<b>Asking price</b>	sold (VAT )	<b>Lying</b>	at sales office

## CONTACT

<b>Sales office</b>	De Valk Portugal	<b>Telephone</b>	+351 308 812321
<b>Address</b>	Edifício Administrativo - Ponta da Areia 8500 - 345 Portimão PT	<b>E-mail</b>	portugal@devalk.nl

## DISCLAIMER

These particulars are given in good faith as supplied but cannot be guaranteed.



## GENERAL

Model	SOUTHERLY 135
Type	sailing yacht
LOA (m)	13,50
LWL (m)	0,00
Beam (m)	4,03
Draft (m)	2,90
Draft min (m)	0,90
Air draft (m)	18,00
Headroom (m)	2,10
Year built	1989
Builder	North shore Yachts Ltd
Country	United Kingdom
Designer	Robert Humphreys
Displacement (t)	10,5
Ballast (tonnes)	cast iron 2.8
CE norm	A
Hull material	GRP
Hull colour	off-white
Hull shape	round-bilged
Keel type	lifting keel
Superstructure material	GRP
Rubbing strake	yes
Deck material	GRP
Deck finish	teak
Superstructure deck finish	teak
Cockpit deck finish	teak
Antifouling (year)	2020
Window frame	aluminium
Window material	polycarbonate
Deckhatch	2



Fuel tank (litre)	polyethylene 170L
Fuel tank 2 (litre)	polyethylene 240L
Level indicator (fuel tank)	yes
Freshwater tank (litre)	stainless steel 2x240L
Blackwater tank (litre)	polyethylene 75L
Blackwater tank extraction	deck extraction + pump
More info on hull	The swing keel was taken out and fully serviced in 2017

## ACCOMMODATION

Cabins	3
Berths	6
Interior	teak
Floor	yes
Deck saloon	yes
Heating	diesel ducted hot air
Navigation center	in deck saloon
Chart table	yes
Aft Cabin	yes
Dinette	yes
Galley	yes
Countertop	plastic
Sink	stainless steel
Cooker	calor gas
Oven	yes
Fridge	yes
Freezer	new 2020, Engel
Hot water system	220V + engine
Water pressure system	electrical
Manual and/or foot pump	yes
Kettle	yes
Hot water tap	yes



Crockery	yes
Owners cabin	double bed Aft
Bed length (m)	1.90m
Wardrobe	hanging and shelves
Bathroom	en suite
Toilet	en suite
Toilet system	manual
Wash basin	in the bathroom
Shower	en suite
Guest cabin 1	v-bed Bow
Bed length (m)	1.90m
Wardrobe	hanging/drawers/shelves
Bathroom	shared
Toilet	shared
Toilet system	vacuum
Wash basin	at the toilet
Guest cabin 2	bunk bed Portside midships
Bed length (m)	yes
Wardrobe	hanging
Toilet	shared
Toilet system	electric
Wash basin	at the toilet
Shower	shared

## MACHINERY

No of engines	1
Make	Yanmar
Type	HTE 4 JH 2G
HP	80
kW	58.88
Fuel	diesel



Year installed	2000
Maximum speed (kn)	8
Cruising speed (kn)	6
Engine hours	1782
Engine cooling system	seawater
Drive	shaft
Gearbox	mechanical
Bowthruster	electric Side Power 6.4HP
Exhaust	watercooled
Propeller type	fixed
Propeller blades	3
Propeller shaft material	stainless steel
Shaft lubrication	grease
Manual bilge pump	3
Electric bilge pump	3
Bilge alarm	yes
Electrical installation	12V/220V
Start battery	1 new 2020
Service battery	2 new 2020
Bowthruster battery	1
Windlass battery	yes
Battery monitor	yes
Battery charger/inverter	yes
Wind generator	new 2019 D 400
Solar panel	2x100w new 2019 2x 60W
Shorepower	with cable

## NAVIGATION

Compass	yes
Depth sounder/log	yes
VHF	yes



Autopilot	autohelm 6000
Wind vane steering install.	new 2017 Hydrovane
Rudder angle indicator	on autopilot
Radar	yes
GPS	yes
Radar/GPS/plotter	new 2019 Raymarine
Electronis chart(s)	yes
AIS receiver	yes
Radio receiver	yes
EPIRB	yes
Searchlight	yes
Loudhailer	yes

## EQUIPMENT

Sprayhood with grab rail	yes
Cockpit cover	yes
Bimini	New 2020
Cockpit cushions	yes
Cockpit table	yes
Bathing platform	yes
Boarding ladder	stainless steel
Transom door	yes
Bow ladder	yes
Deck shower	yes
Anchor	Delta
Anchor chain	60m New 2017
Anchor 2	Bruce
Windlass	electrical
Deck wash	yes
Dinghy	inflatable New 2020
Outboard	Honda new 2021



Outboard support	yes
Sea railing	wire
Grab rail (superstructure)	yes
Pushpit	yes
Pulpit	yes
Life raft (pers)	container 6
Last life raft survey	2021
Lifejackets	5
Lifebuoy	yes
Danbuoy	yes
Wiper	yes
Horn	electric
Radar reflector	yes
Fenders	yes
Mooring lines	yes
Spare parts	yes
Tools	yes
Radio-cd player	yes
Speakers in salon	yes
Speakers in cabin	yes
Clock - barometer	yes
Fire extinguisher	3x

## RIGGING

Rigging	sloop
Standing rigging	wire New 2018
Brand mast	Kemp
Material mast	aluminium
Mainsail	32.5m2
Stoway mast	rullaranda
Genoa	2x 120%





Genoa furler	yes
Gennaker	With new 2021 furler
Stormjib	yes
Self tacking jib installation	2007
Reefing System	main in-mast furling
Boomvang	mechanical
Primary sheet winch	2x Anderson 52
Secondary sheet winch	2x Lewmar 40
Halyard winches	2x Lewmar 40
Reefing winch	Electric
Spi-pole	aluminium
Extra info	traveller main replaced 2019 All sails serviced 2018
Extra info	Running rigging replaced 2019



# SOUTHERLY 135



# SOUTHERLY 135





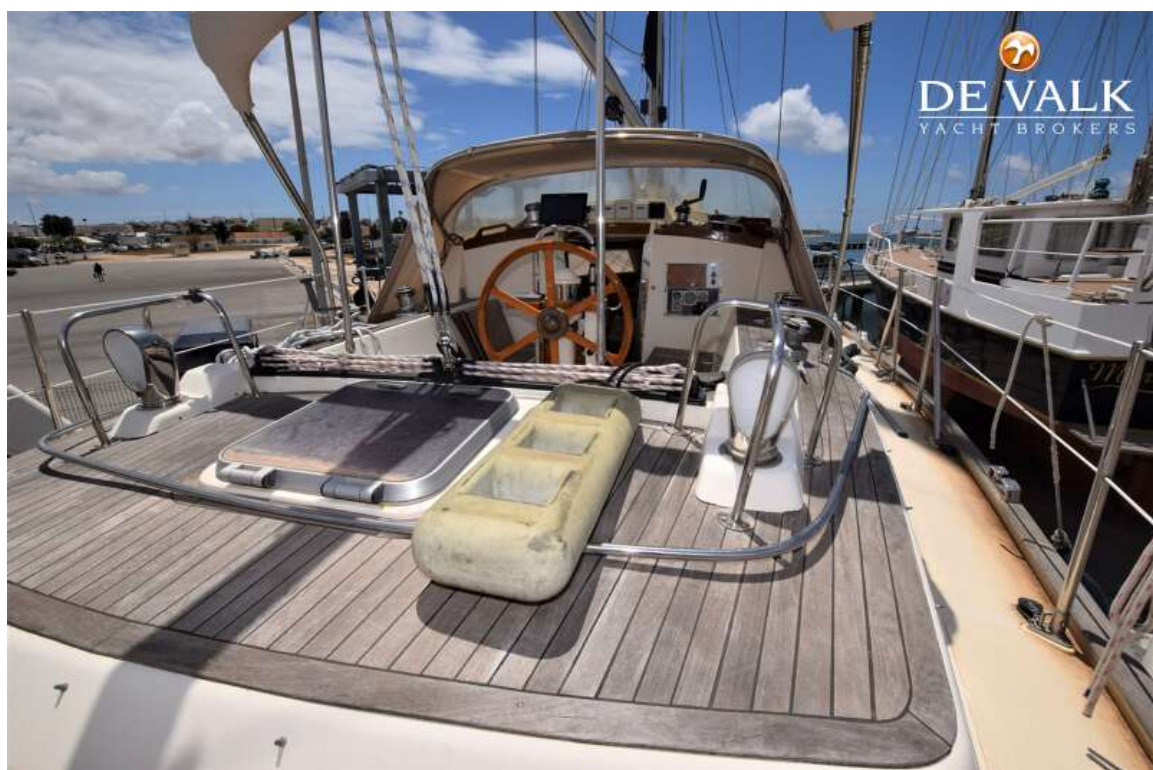
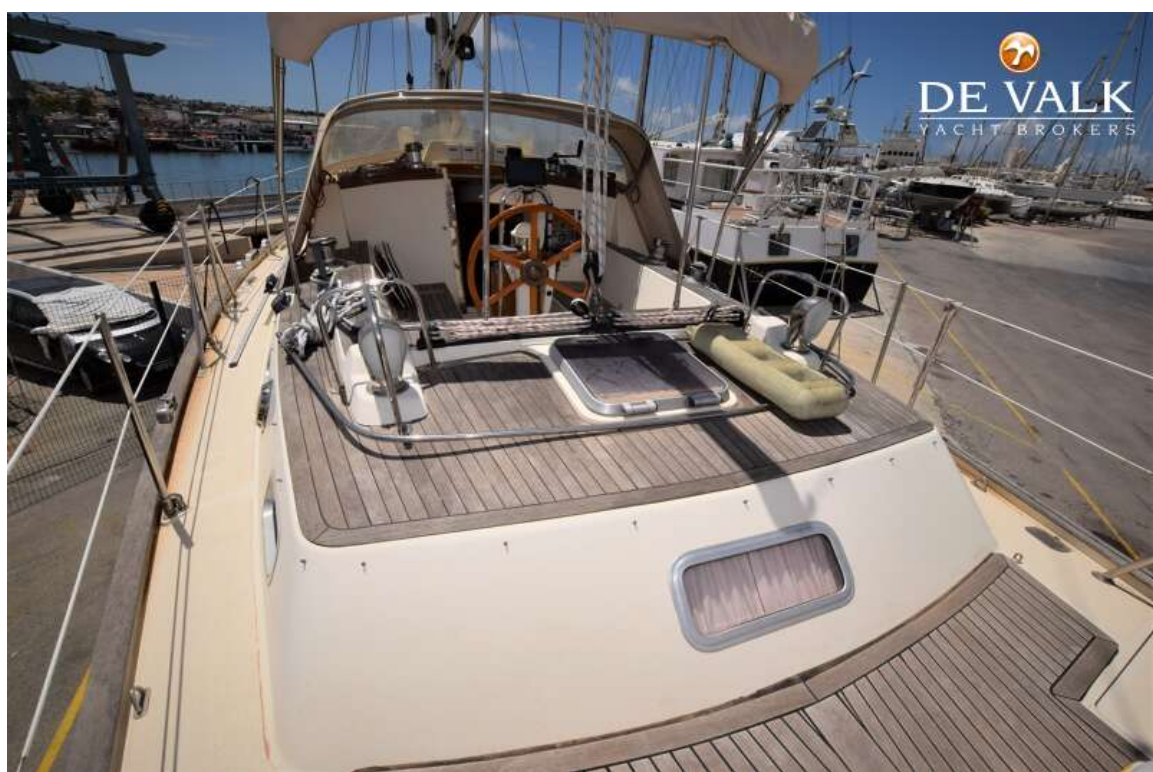


# SOUTHERLY 135



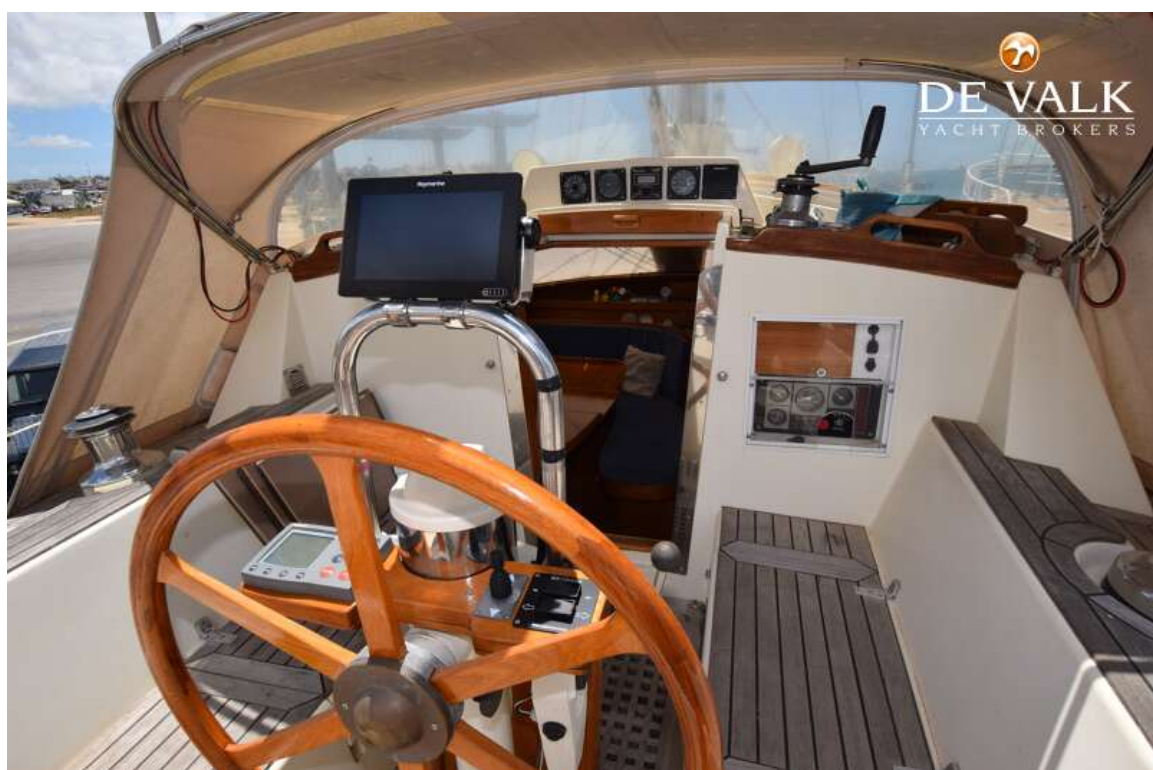


# SOUTHERLY 135





# SOUTHERLY 135



# SOUTHERLY 135



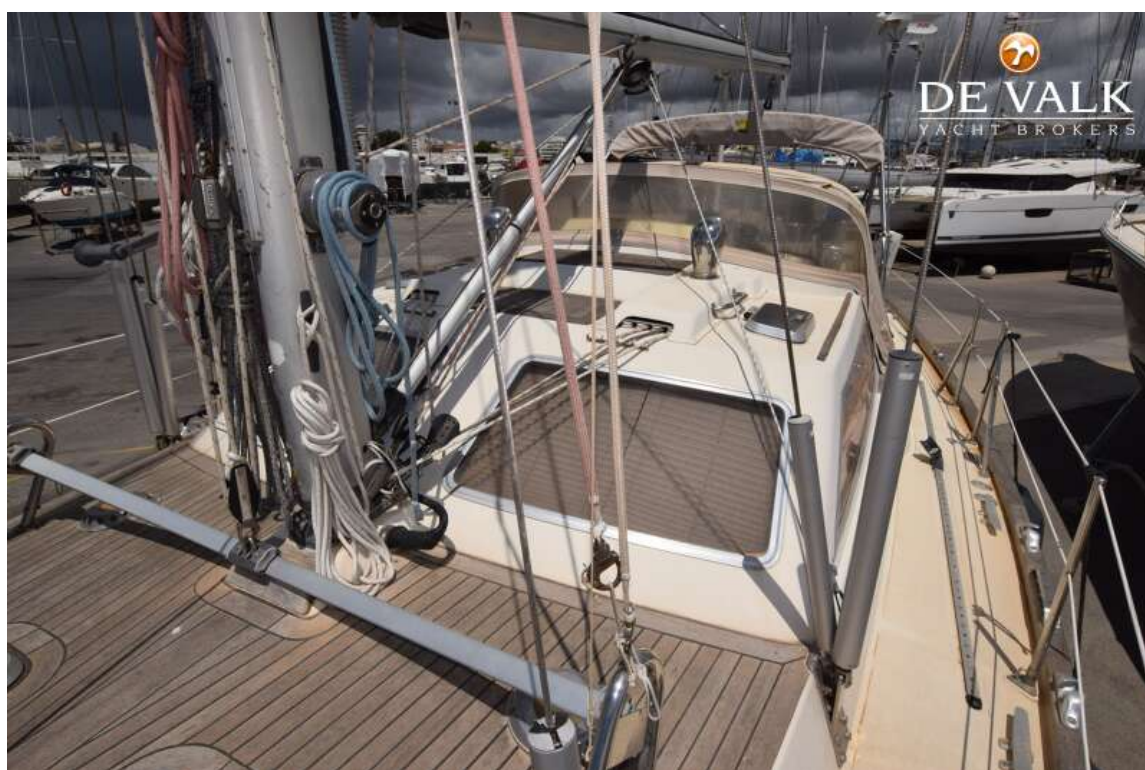


# SOUTHERLY 135





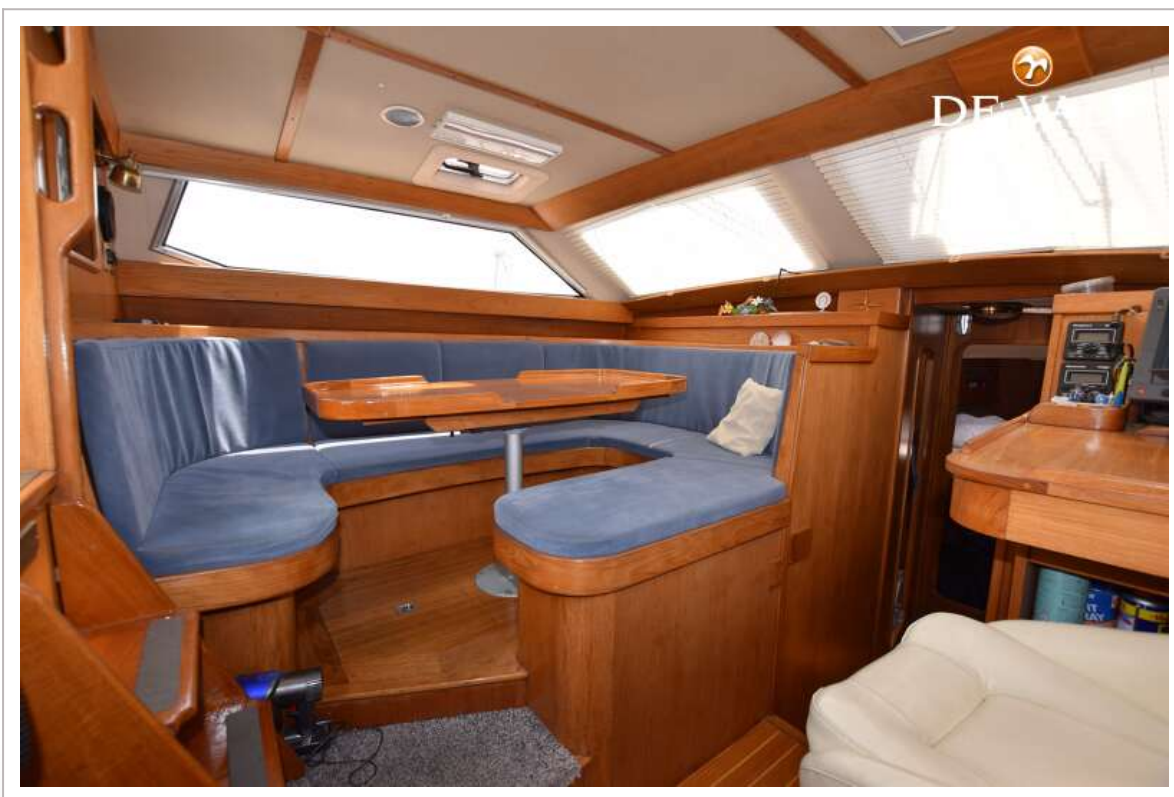
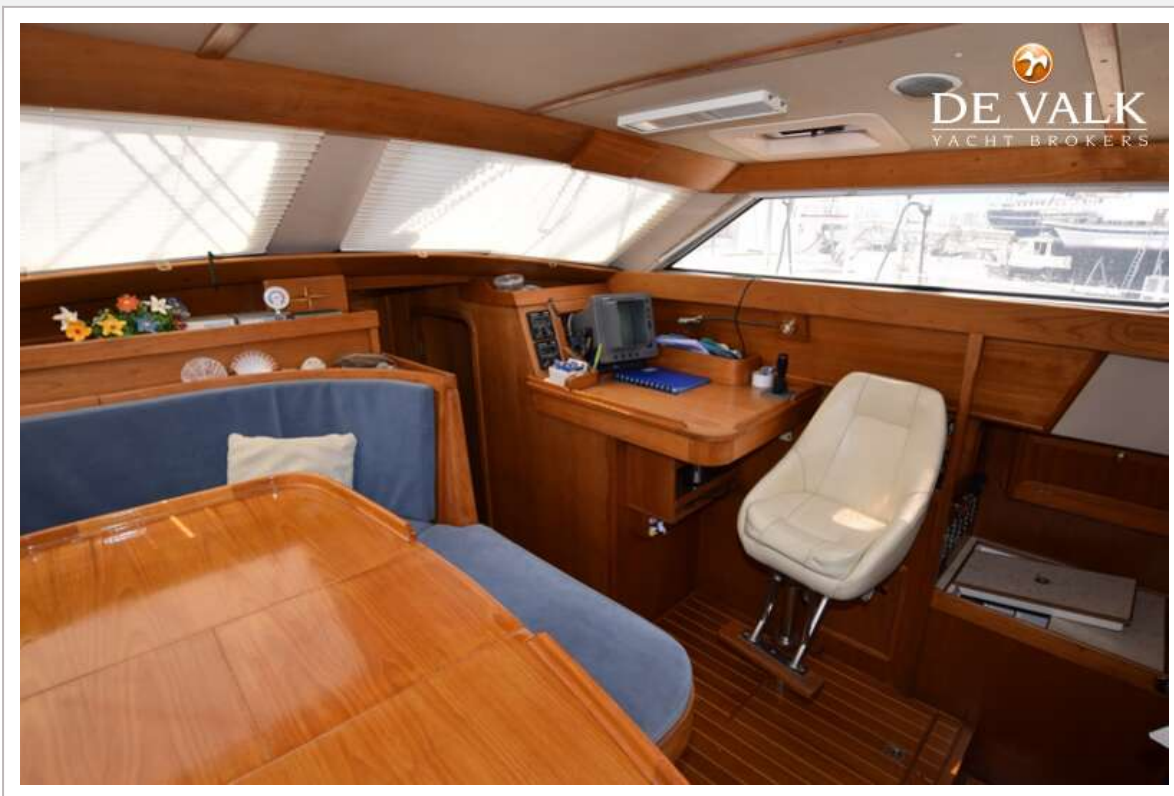
# SOUTHERLY 135



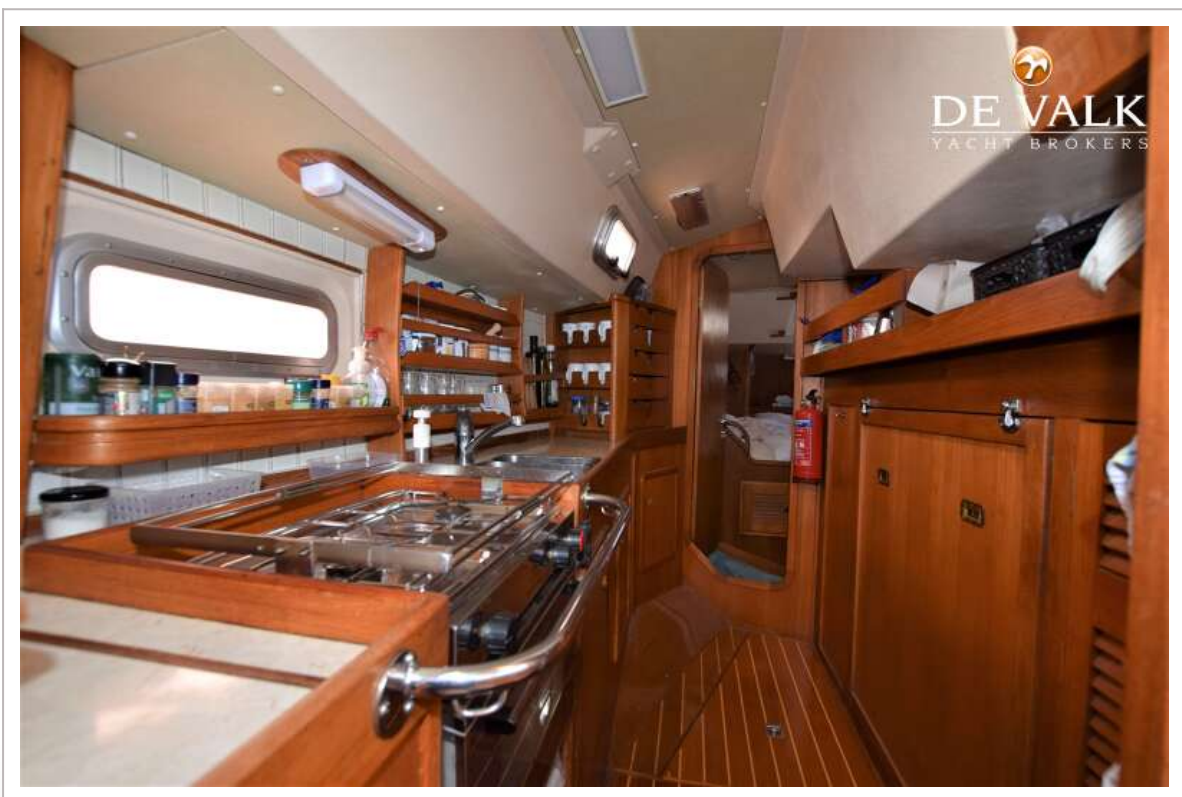
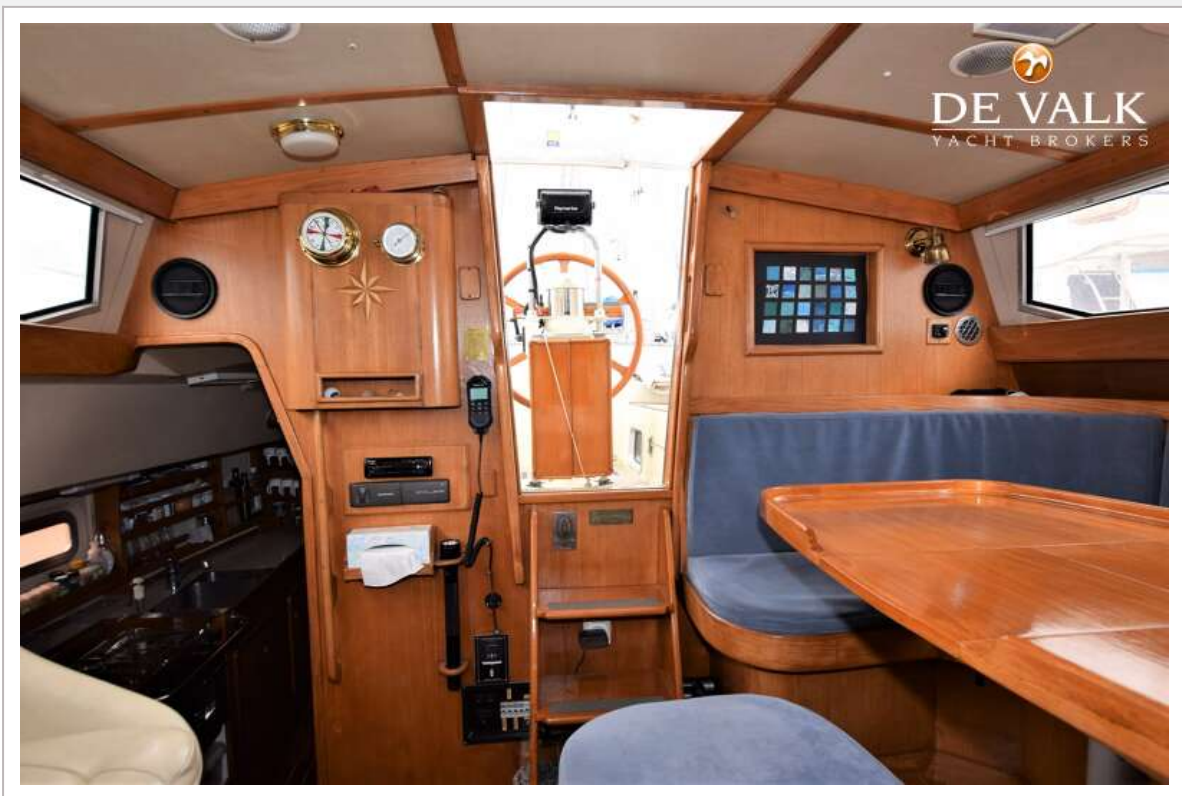




# SOUTHERLY 135



# SOUTHERLY 135





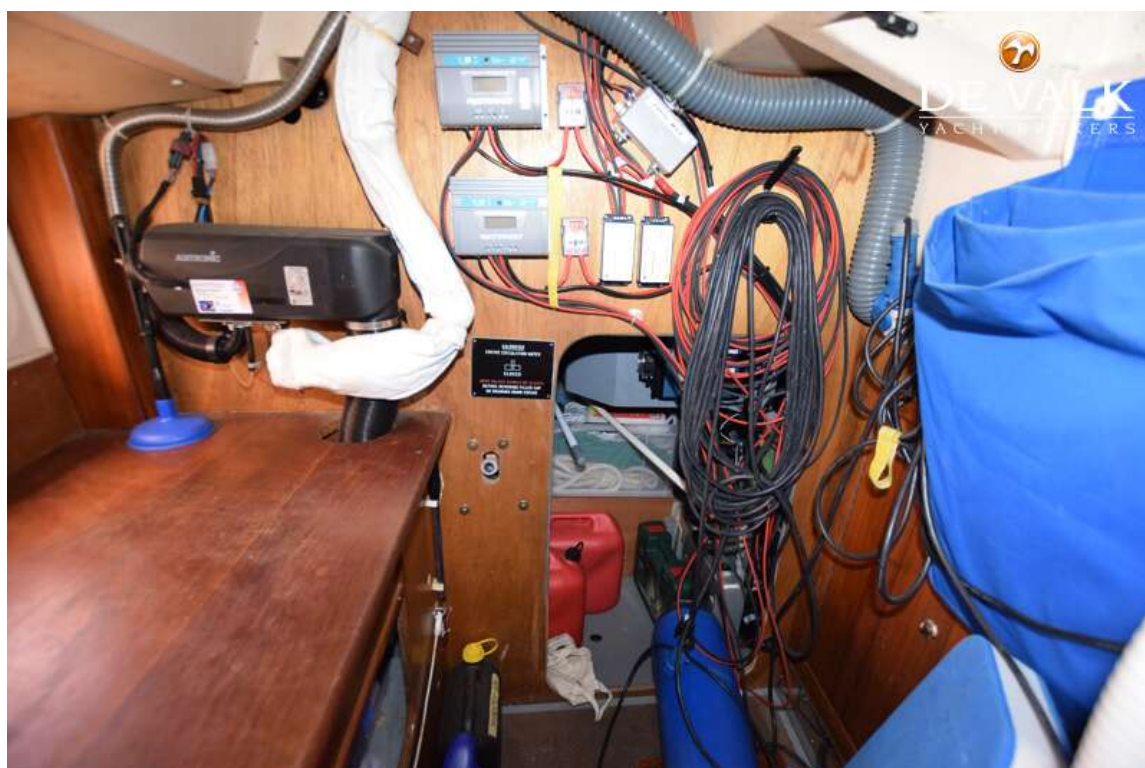
# SOUTHERLY 135



# SOUTHERLY 135

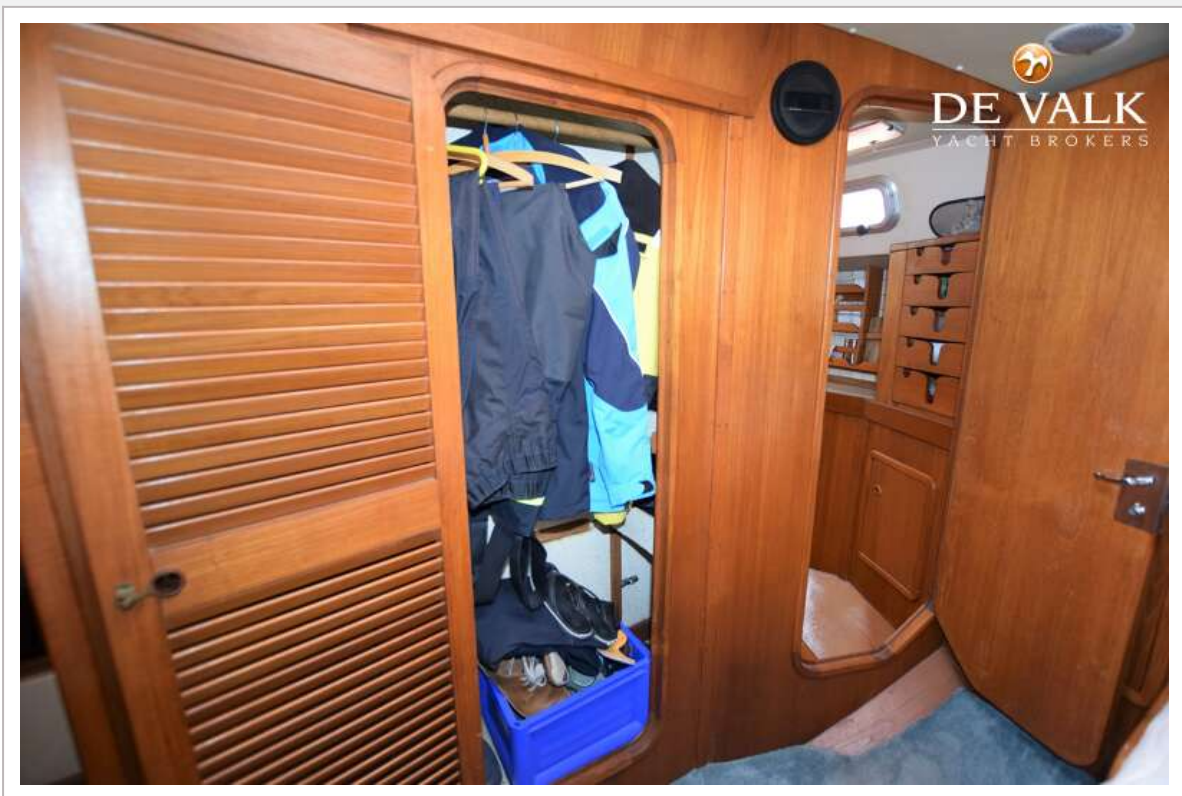








# SOUTHERLY 135



# SOUTHERLY 135





# SOUTHERLY 135



