



DE VALK  
YACHT BROKERS



ALMARINE 1200



DE VALK  
YACHT BROKERS

BROKERAGE | CHARTER | BERTHS | FINANCE | INSURANCE | YACHT MANAGEMENT

# ALMARINE 1200

## BROKER'S COMMENTS

The Almarine 1200 "Valentine" is a beautiful Dutch built motor yacht that is very suitable for a longer stay on board. Very spacious interior with an aft owners cabin with en suite, open plan layout with central saloon and forward galley/dinette. Fitted with central heating, a bow and stern thruster and a reliable Iveco engine. This Almarine 1200 is also suitable to sail the French canals. Lots of renewals and complete repaint in 2022. Are you curious? Then make an appointment with De Valk Zeeland to view the Almarine 1200 at her mooring.

*Nick Lanting*

## SPECIFICATIONS

<b>Dimensions</b>	12.60 x 4.35 x 1.25 (m)	<b>Builder</b>	Jachtwerf het Wargaren BV
<b>Built</b>	2002	<b>Cabins</b>	1
<b>Material</b>	Steel	<b>Berths</b>	4
<b>Engine(s)</b>	1 x Iveco 8065M12 diesel	<b>Hp/Kw</b>	120.00 (hp), 88.30 (kw)
<b>Asking price</b>	sold (VAT )	<b>Lying</b>	elsewhere / Not at sales office

## CONTACT

<b>Sales office</b>	De Valk Sint Annaland B.V.	<b>Telephone</b>	+31 (0)166 601 000
<b>Address</b>	Koelhuisweg 4 4697 RM Sint Annaland NL	<b>E-mail</b>	sintannaland@devalk.nl

## DISCLAIMER

These particulars are given in good faith as supplied but cannot be guaranteed.



## GENERAL

Model	ALMARINE 1200
Type	motor yacht
LOA (m)	12,60
LWL (m)	11,95
Beam (m)	4,35
Draft (m)	1,25
Air draft (m)	3,75
Air draft min (m)	3,10
Headroom (m)	2,03
Year built	2002
Builder	Jachtwerf het Wargaren BV
Country	The Netherlands
Displacement (t)	16
CE norm	C
Hull material	steel
Hull colour	white
Hull thickness (mm)	5
Hull shape	multi hard chine
Superstructure material	steel
Superstructure (mm)	5
Deck plate thickness (mm)	5
Deck material	steel
Deck finish	non-skid paint
Superstructure deck finish	paint
Cockpit deck finish	non-skid paint
Antifouling (year)	2022/05
Window frame	aluminium
Window material	tempered glass
Deckhatch	yes
Portholes	aluminium



# ALMARINE 1200

Insulation	foam
Radar arch	collapsible
Mast can be lowered	manual
Fuel tank (litre)	steel 800
Level indicator (fuel tank)	yes
Freshwater tank (litre)	polyethylene 2x 400
Level indicator (freshwater)	yes
Blackwater tank (litre)	polyethylene 100
Blackwater tank extraction	deck extraction + pump
Wheel steering	yes
Outside helm position	hydraulic
More info on paintwork	Complete repaint in 2022/04 with Epifanes 2-component
Extra info	Air draft windows up 3.30 m, windows down 3.10 m.

## ACCOMMODATION

Cabins	1
Berths	4
Interior	mahogany
Floor	vinyl Floor hatches with vinyl in saloon (2022), carpet at galley
Aft deck	yes
Saloon	yes
Headroom saloon (m)	2.03
Heating	Maritime Booster
Aft Cabin	yes
Dinette	yes
Dinette to convert into berth	Width 2.00 m, depth 1.70 m, no infill cushion present
Opening door to aft deck	yes
Galley	yes
Countertop	plastic
Sink	stainless steel
Cooker	calor gas 3 burner



# ALMARINE 1200

Extractor	yes
Microwave/oven combi	yes
Fridge	yes
Hot water system	on central heating
Water pressure system	electrical DAB frequency controlled hydrophore
Kettle	yes
Coffee maker	yes
Owners cabin	double bed
Bed length (m)	2,00 x 1.40
Wardrobe	hanging/drawers/shelves
Bathroom	en suite
Toilet	In bathroom
Toilet system	electric
Wash basin	in the bathroom
Shower	separate In bathroom
Extra info	Bed has been enlarged to 2,00 x 1,40 plus new mattress
Extra info	Two-tone upholstery new 2022
Extra info	All windows and hatches have external summer and winter blinds

## MACHINERY

No of engines	1
Make	Iveco
Type	8065M12
HP	120
kW	88.30
Fuel	diesel
Year installed	2002
Maximum speed (kn)	9
Cruising speed (kn)	7
Consumption (l/hr)	4
Engine hours	2819



# ALMARINE 1200

Engine cooling system	freshwater heat exchanger
Drive	shaft
Engine controls	yes
Gearbox	hydraulic
Bowthruster	electric Vetus 6 hp, 2022 motor overhauled
Sternthruster	Vetus (2022)
Exhaust	watercooled
Thrust bearing	2022
Propeller type	fixed
Propeller blades	3
Propeller shaft material	stainless steel
Shaft lubrication	water
Electric bilge pump	Still to be fitted
Electrical installation	24V / 220V, system updated and renewed 2022
Generator	Paguro 3.6KW
Running hours generator	yes
Batteries	yes
Start battery	2 x 185 Ah (2022)
Service battery	4 x (2022)
Generator battery	1 x
Sternthruster battery	2 x (2022)
Battery monitor	yes
Battery charger/inverter	Victron Multi 24V/2000W/60Ah + Bluetooth interface
Diode battery combiners	2022
Shorepower	with cable
Extra info	Engineroom hatches with soundproof insulation 2022

## NAVIGATION

Depth sounder	NASA Marine
VHF	Shipmate
Navigation lights	yes



## EQUIPMENT

Fixed windscreen	Windows can be folded to reduce air draft
Sprayhood with grab rail	Windows new 2022
Sun awning	Over aft deck (2022)
Winter cover	yes
Cockpit cushions	For aft deck locker boxes
Cockpit table	2 x
Cockpit chairs	2 x, plus helm bench seat (2022)
Bathing platform	Meranti lacquered wood
Boarding ladder	stainless steel
Gangway	yes
Anchor	yes
Sea railing	stainless steel
Railing side opening gates	2 x
Pushpit	yes
Pulpit	yes
Lifejackets	yes
Wiper	1 x (2022)
Horn	electric
Radar reflector	yes
Fenders	2022
Mooring lines	2022
Radio-cd player	yes
Speakers in salon	yes
Fire extinguisher	2 x
Latest extinguisher survey	2021
Extra info	A mooring in in Streefkerk, the Netherlands is available.





# ALMARINE 1200





# ALMARINE 1200



# ALMARINE 1200





# ALMARINE 1200

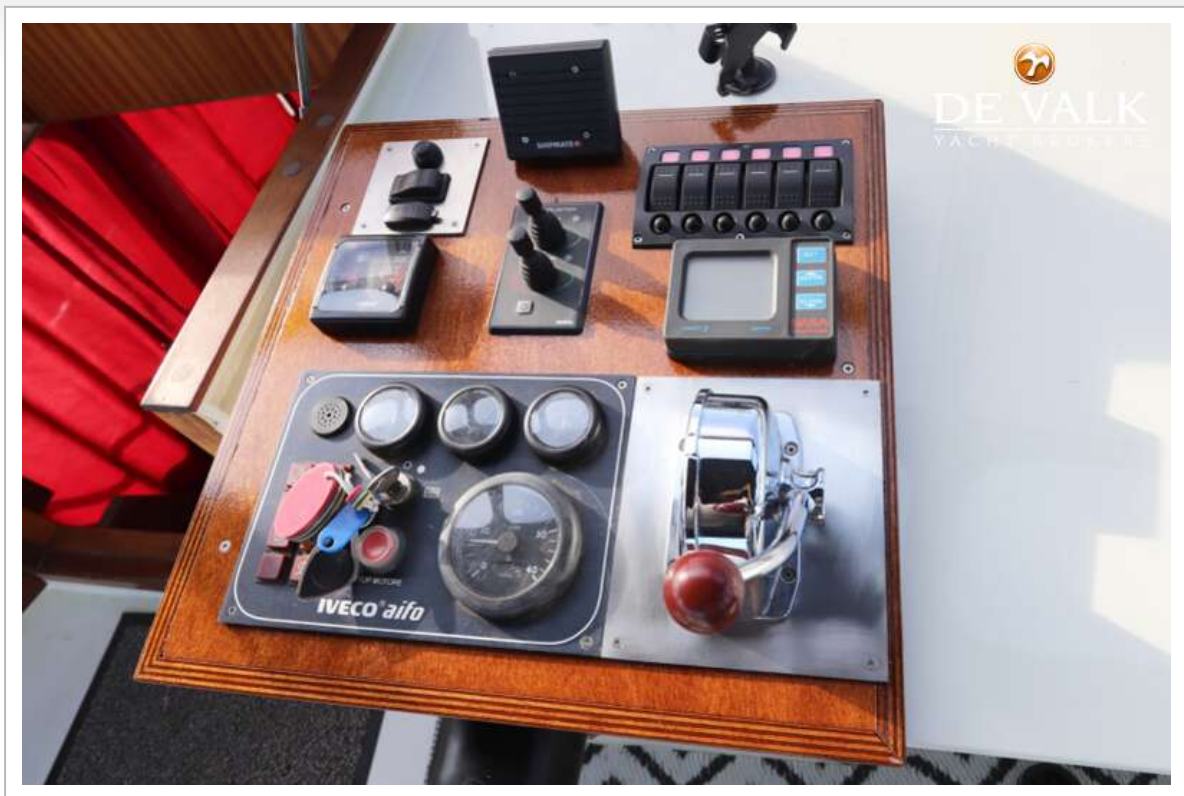


# ALMARINE 1200





# ALMARINE 1200



# ALMARINE 1200



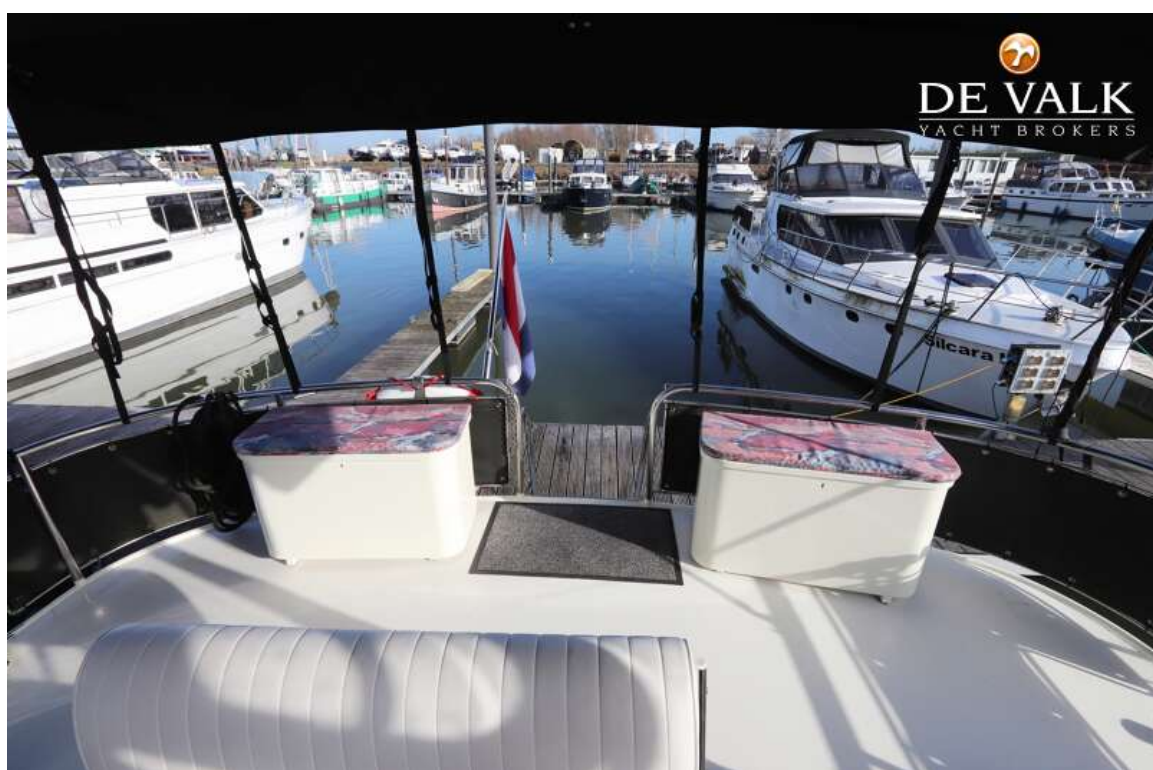


# ALMARINE 1200





# ALMARINE 1200

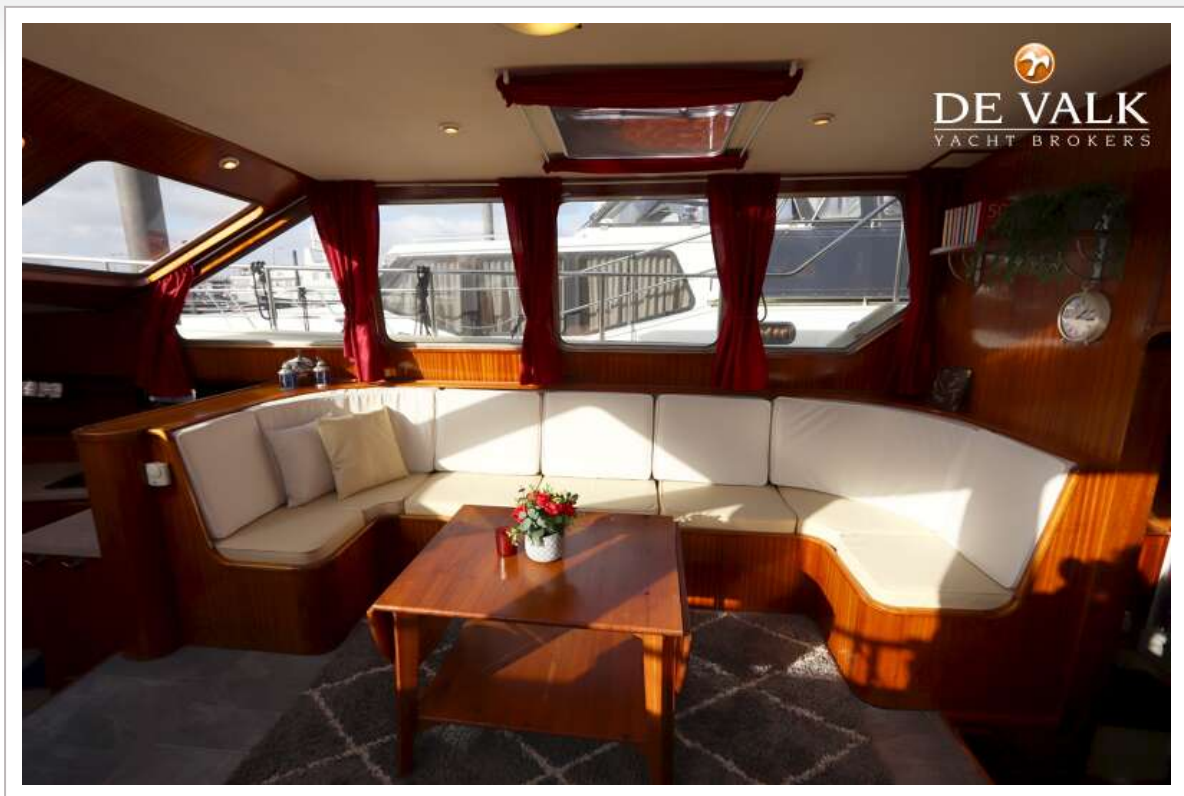


# ALMARINE 1200





# ALMARINE 1200



# ALMARINE 1200





# ALMARINE 1200



# ALMARINE 1200





# ALMARINE 1200





# ALMARINE 1200

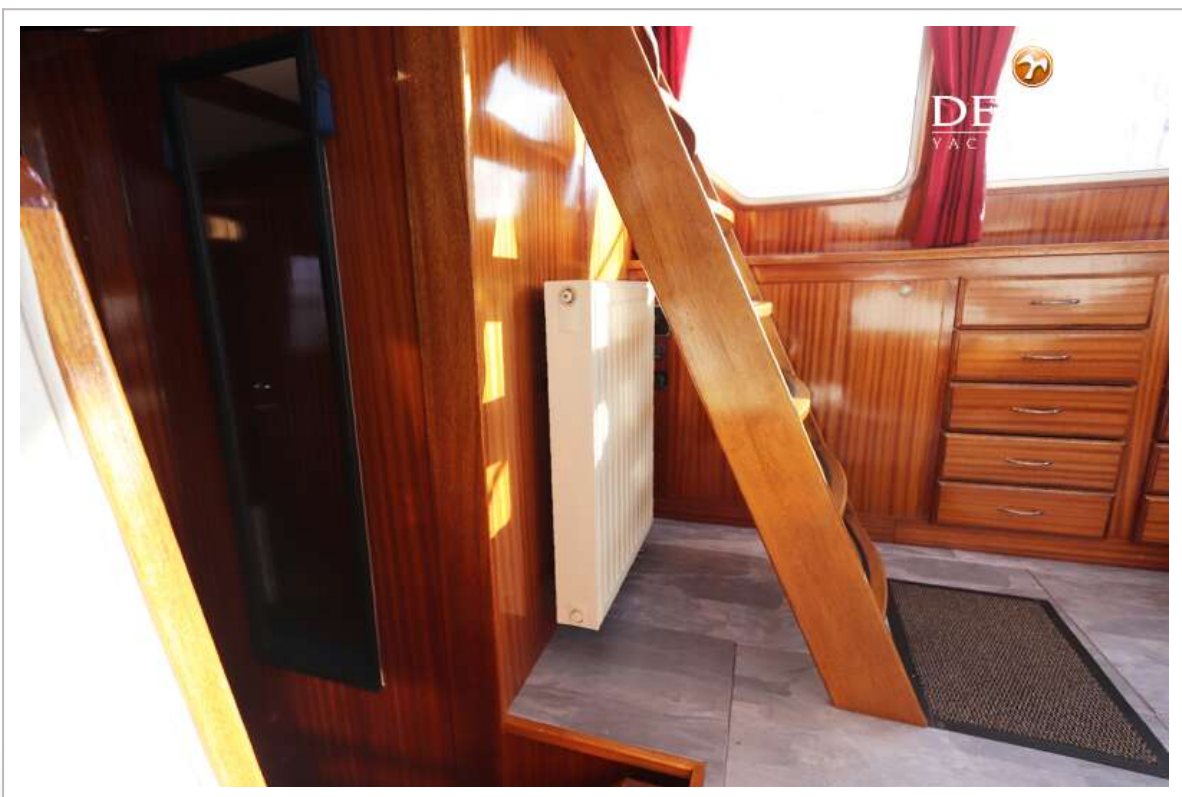


# ALMARINE 1200

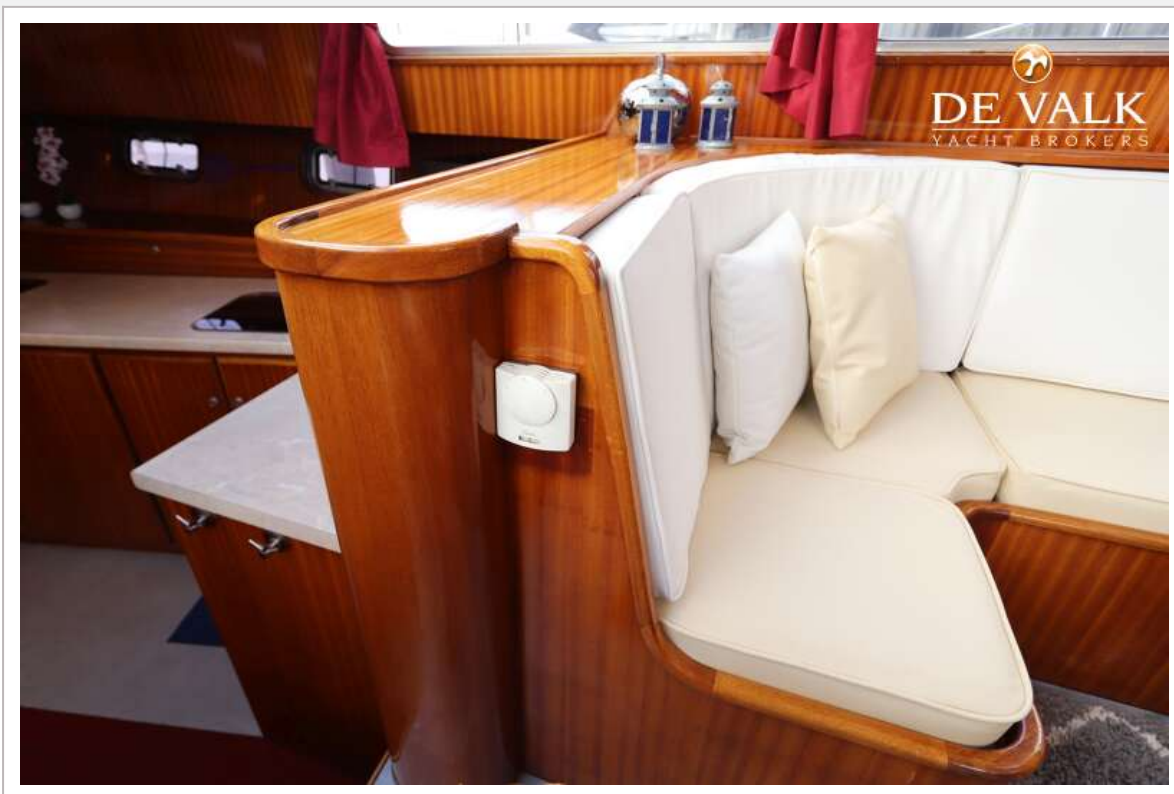




# ALMARINE 1200

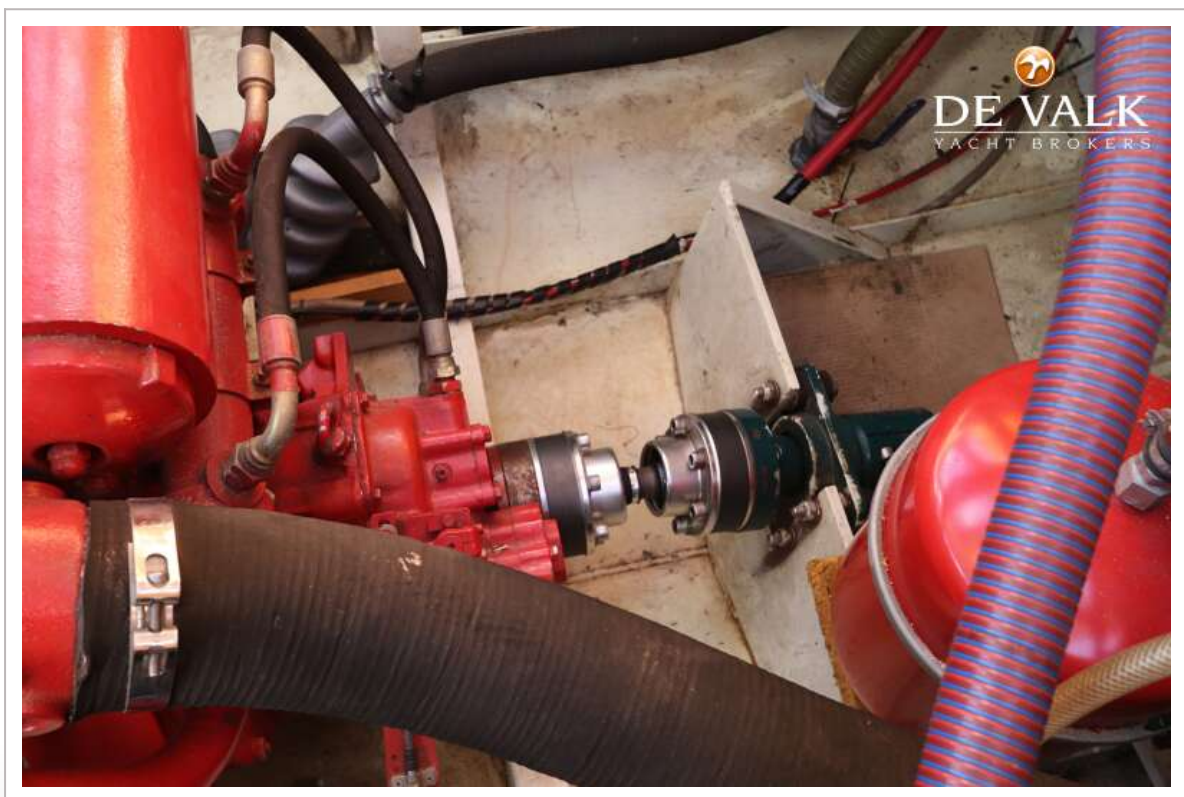


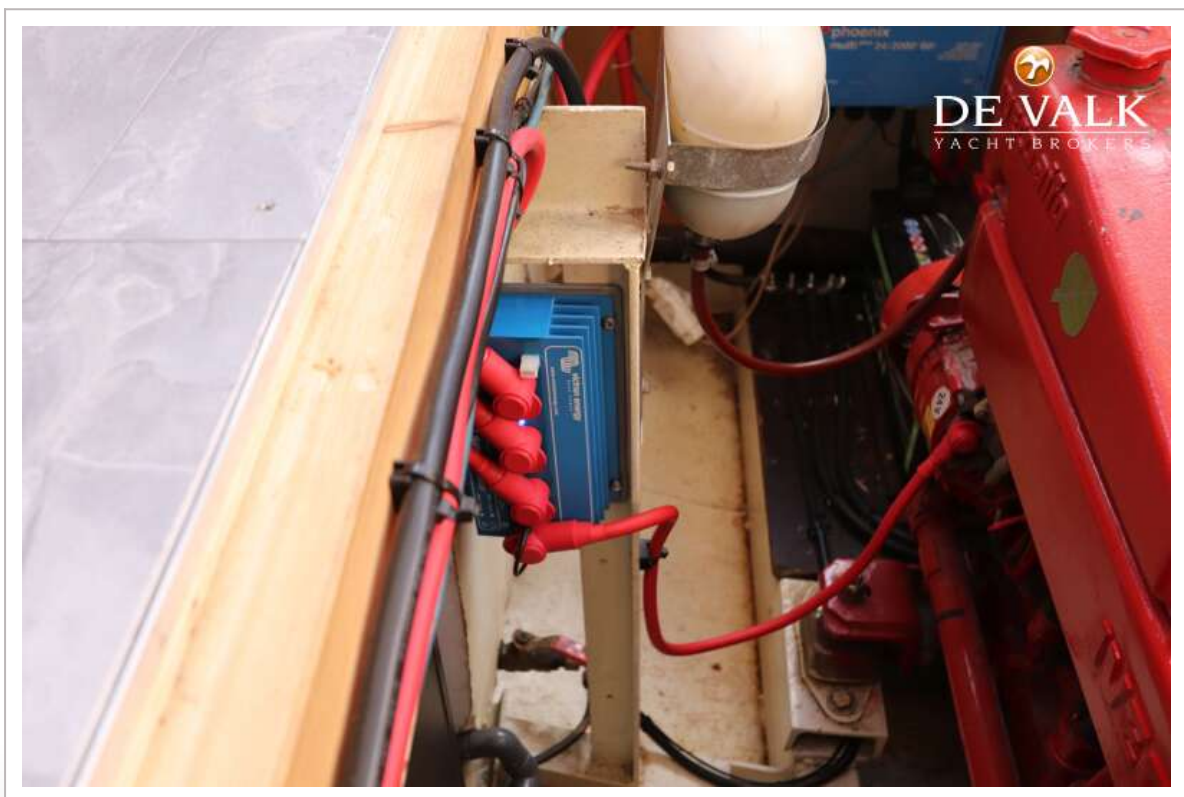
# ALMARINE 1200





# ALMARINE 1200







# ALMARINE 1200

