



DE VALK
YACHT BROKERS



BRUCE ROBERTS 493



DE VALK
YACHT BROKERS

BROKERAGE | CHARTER | BERTHS | FINANCE | INSURANCE | YACHT MANAGEMENT

BROKER'S COMMENTS

For the serious long-distance cruiser seeking a high-quality, easy-to-handle ketch that's fully equipped and ready to sail. This robust, custom-built yacht exceeds structural standards by at least two grades. The immaculate solid wood interior looks like new. Based on the Bruce Roberts BR 493 hull, it features aft and midship cockpits with direct access below. Exceptionally well-equipped and maintained, this yacht is in pristine condition.

Johan Schootstra

SPECIFICATIONS

Dimensions	15.00 x 4.30 x 2.10 (m)	Builder	partly owner built
Built	1994	Cabins	2
Material	GRP	Berths	8
Engine(s)	1 x Yanmar 4JH110 diesel	Hp/Kw	110.00 (hp), 80.85 (kw)
Asking price	sold (VAT)	Lying	at sales office

CONTACT

Sales office	De Valk Hindeloopen B.V.	Telephone	+31 514 52 40 00
Address	Oosterstrand 1 8713 JS Hindeloopen NL	E-mail	hindeloopen@devalk.nl

DISCLAIMER

These particulars are given in good faith as supplied but cannot be guaranteed.



GENERAL

Model	BRUCE ROBERTS 493
Type	sailing yacht
LOA (m)	15,00
LWL (m)	12,00
Beam (m)	4,30
Draft (m)	2,10
Air draft (m)	22,00
Headroom (m)	2,00
Year built	1994
Builder	Partly owner built
Country	Denmark
Designer	Owner
Displacement (t)	20
Ballast (tonnes)	lead 8,5
CE norm	A
Hull material	GRP
Hull colour	off-white
Hull shape	round-bilged
Keel type	fin keel
Superstructure material	GRP
Deck material	GRP
Deck finish	teak
Superstructure deck finish	teak
Cockpit deck finish	teak
Antifouling (year)	2023
Window frame	aluminium
Window material	polycarbonate
Deckhatch	Lewmar with covers 5x
Fuel tank (litre)	stainless steel 325 ltr.
Level indicator (fuel tank)	yes



Freshwater tank (litre)	stainless steel 120 ltr.
Level indicator (freshwater)	yes
Blackwater tank (litre)	polyethylene 93 ltr.
Blackwater tank extraction	Below water line
Wheel steering	cable steering

ACCOMMODATION

Cabins	2
Berths	8
Interior	mahogany
Floor	Marine teak with koto stripe
Open cockpit	2x mid and aft ships
Saloon	With 2 bunk beds behind settee on either side
Headroom saloon (m)	2 mtr.
Heating	diesel ducted hot air Eberspächer
Navigation center	yes
Chart table	yes
Aft Cabin	yes
Convertible berth	yes
Galley	yes
Countertop	Melamine
Sink	stainless steel double
Cooker	calor gas Techimpex 2021
Oven	In cooker
Fridge	Electrolux 80 ltr.
Freezer	In fridge
Hot water system	220V + engine
Water pressure system	electrical
Manual and/or foot pump	yes
Hot water tap	yes
Crockery	yes



Owners cabin	double bed + single bed in stern
Bed length (m)	2 mtr.
Wardrobe	hanging/drawers/shelves
Bathroom	en suite
Toilet	en suite Jabsco freshwater flush
Toilet system	manual
Wash basin	in the bathroom
Shower	en suite
Guest cabin 1	double bed + single bed in bow
Bed length (m)	2 mtr.
Wardrobe	hanging and shelves
Bathroom	shared
Toilet	Jabsco
Toilet system	manual
Wash basin	yes
Extra info	All waste water plumbing renewed 2023

MACHINERY

No of engines	1
Make	Yanmar
Type	4JH110
HP	110
kW	80.85
Fuel	diesel
Year installed	2015
Maximum speed (kn)	8
Cruising speed (kn)	6
Consumption (l/hr)	4
Engine hours	1221.4
Engine cooling system	freshwater heat exchanger
Drive	shaft



Shaft seal	Renewed 2016
Engine controls	At steering position
Gearbox	mechanical
Engine controls	bowden cable
Bowthruster	electric 170/250TC
Exhaust	watercooled
Propeller type	feathering Max Prop
Propeller blades	3
Propeller shaft material	stainless steel
Shaft lubrication	yes
Manual bilge pump	yes
Electric bilge pump	yes
Electrical installation	24/220V
Generator	2x 50Amp. on engine one 12V and one 24V
Generator 2	Portable Honda EU 10 inverter
Start battery	2x 80Ah
Service battery	4x 125Ah
Bowthruster battery	optima deep cycle 2x 75Ah
Windlass battery	On service batteries
Battery monitor	Mastervolt (
Battery charger/inverter	Sailor 50Amp
Diode battery combiners	yes
Shorepower	with cable

NAVIGATION

Compass	Silvan 150
Electric compass	On autopilot
Depth sounder/log	Garmin
Windset	Garmin
VHF	2x Sailor 6215 DSC Class D
VHF handheld	In cockpit



Autopilot	Simrad
Rudder angle indicator	At quadrant
GPS	Garmin 152
Plotter	yes
Plotter/GPS	Raymarine Hybrid e95
Radar/plotter	Raymarine C80
Navtex	Sailor 6390 , Mcmurdo ICS NAV6
Electronic chart(s)	Navionics
AIS receiver	Sailor class A
EPIRB	Sailor SGE406-II
Navigation lights	yes

EQUIPMENT

Cockpit cover	Aft cockpit
Bimini	Over aft cockpit
Cockpit cushions	yes
Cockpit table	yes
Bathing platform	yes
Boarding ladder	stainless steel
Gangway	yes
Deck shower	At the stern, hot & cold water
Anchor	CQR Plough
Anchor chain	1/2 inch galvanized steel 80 mtr.
Anchor 2	Trefoil on stern
Windlass	electrical Lewmar 2000
Capstan	yes
Dinghy	inflatable Cape Horn Diamond 250
Outboard	Honda 2.3HP new 2017
Outboard support	yes
Sea railing	wire stainless steel stanchions
Grab rail (superstructure)	teak



Pushpit	yes
Pulpit	yes
Lifejackets	8
Fenders	yes
Mooring lines	yes
Spare parts	Stay onboard
Tools	Stay onboard
Radio-cd player	yes
Speakers in salon	yes
Clock - barometer	yes
Fire extinguisher	3x
Latest extinguisher survey	2022

RIGGING

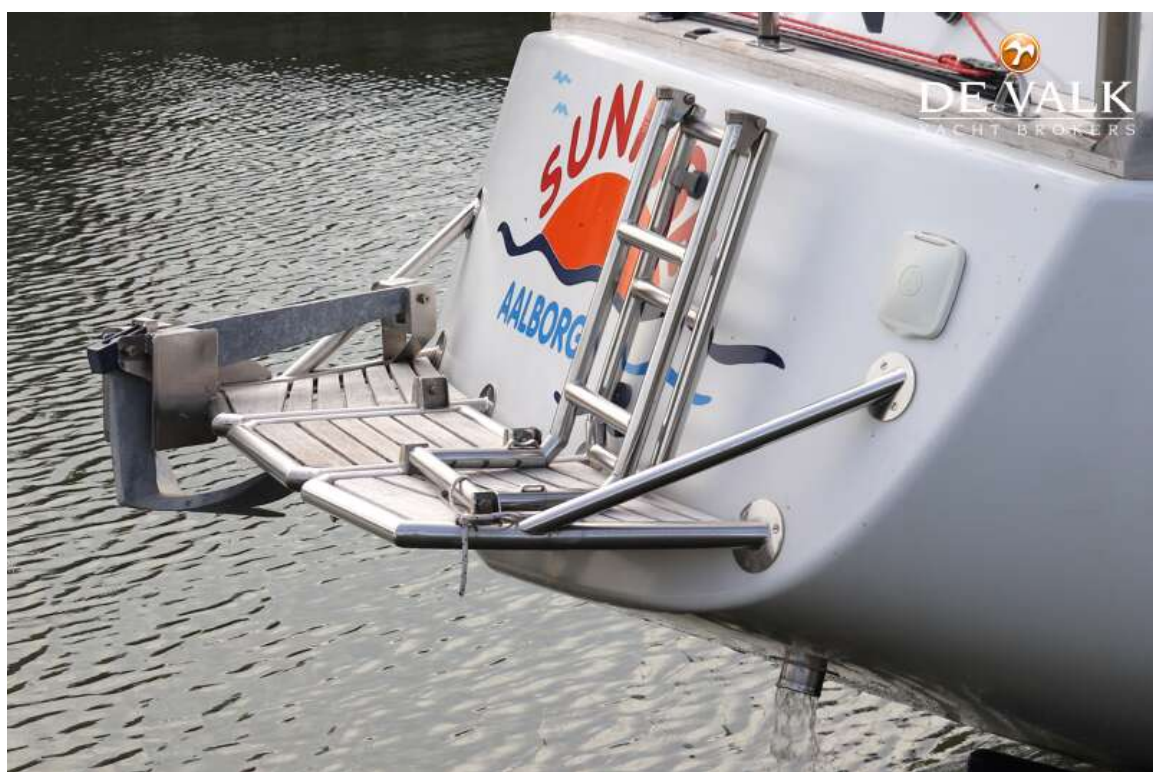
Rigging	ketch
Standing rigging	wire
Brand mast	Seldén
Material mast	aluminium
Spreaders	2 pair on main, 1 pair on mizzen
Keel stepped mast	Main mast
Mainsail cover	Lazy jacks and bags on main and mizzen
Battcars	Selden, ball bearings
Fully battened mainsail	yes
Mizzen	yes
Mizzen sailcover	With lazy jack
Jib	yes
Genoa	With UV strip
Genoa furler	Selden Furlex
Gennaker	yes
Staysail furler	Selden Furlex
Stormjib	Never used



Reefing System	slabreefing
Backstay adjuster	tackle
Boomvang	gasspring Seldén
Primary sheet winch	Main: 1x Lewmar 43 Mizzen: 1x Lewmar 16
Secondary sheet winch	Staysail: 2x Lewmar 44
Genoa sheetwinches	2x Lewmar 56ST
Halyard winches	Main: 1x Lewmar 43 & 1x 16 Mizzen: 1x Lewmar 16
Reefing winch	Main: 1x Lewmar 16 Mizzen: 1x Lewmar 16
Spi-pole	aluminium Seldén
Gennaker pole	aluminium Sparcraft bowsprit



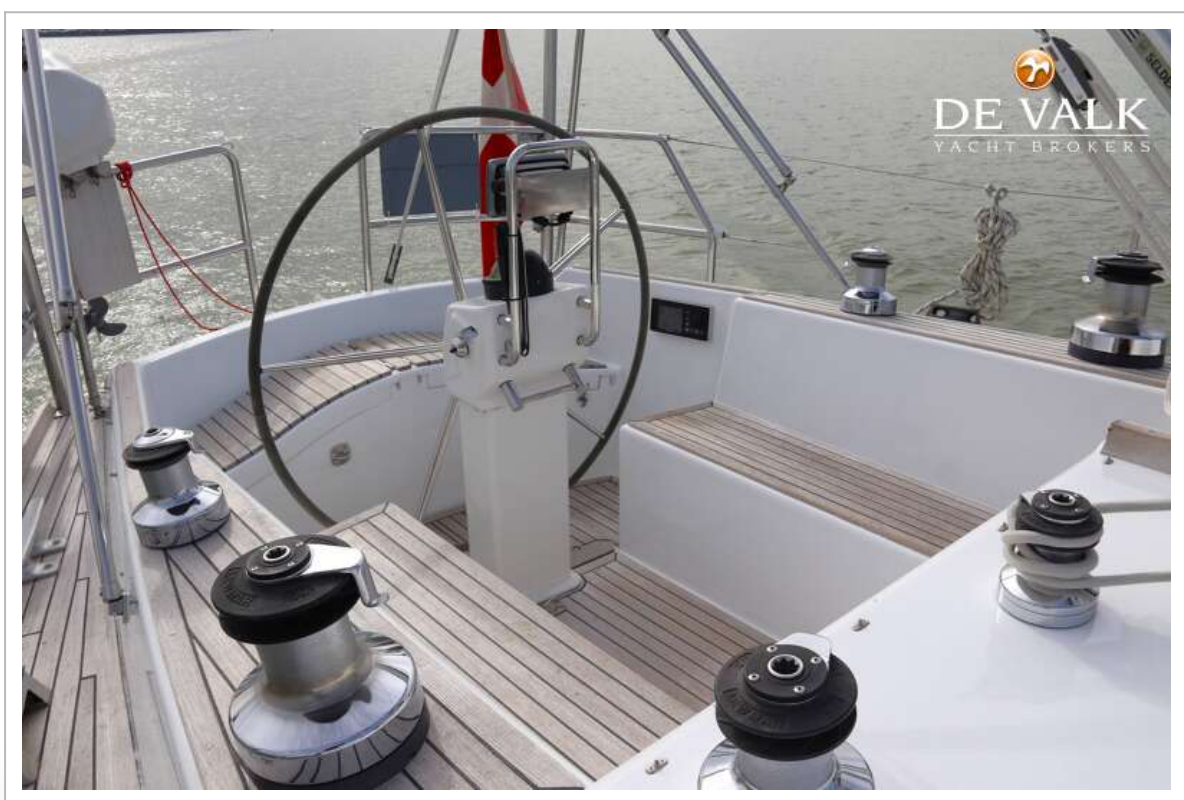






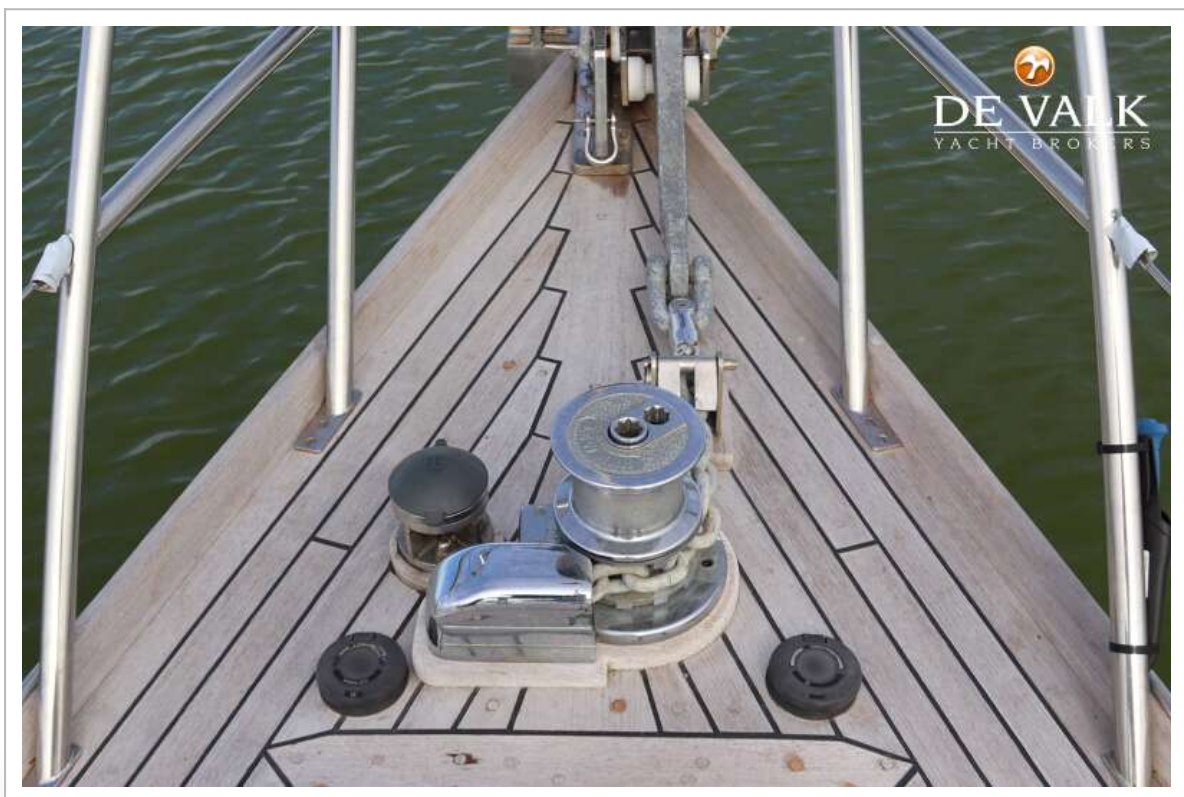




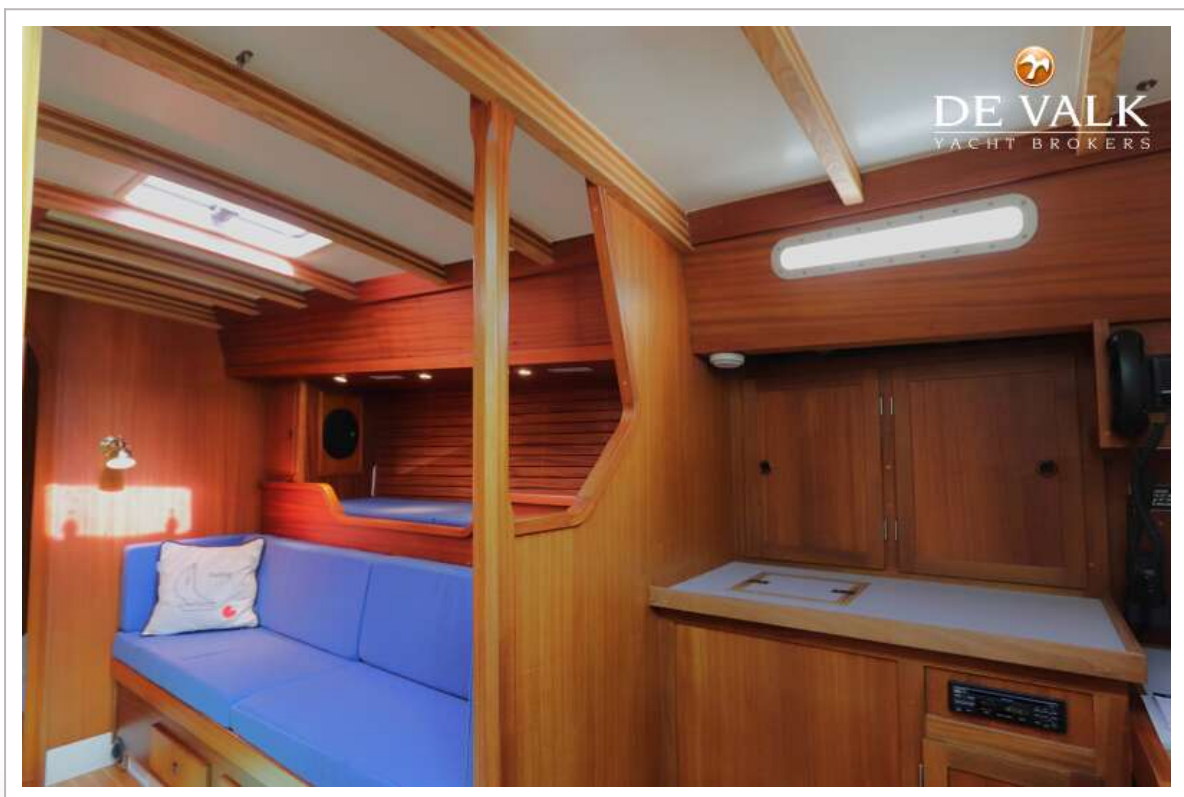
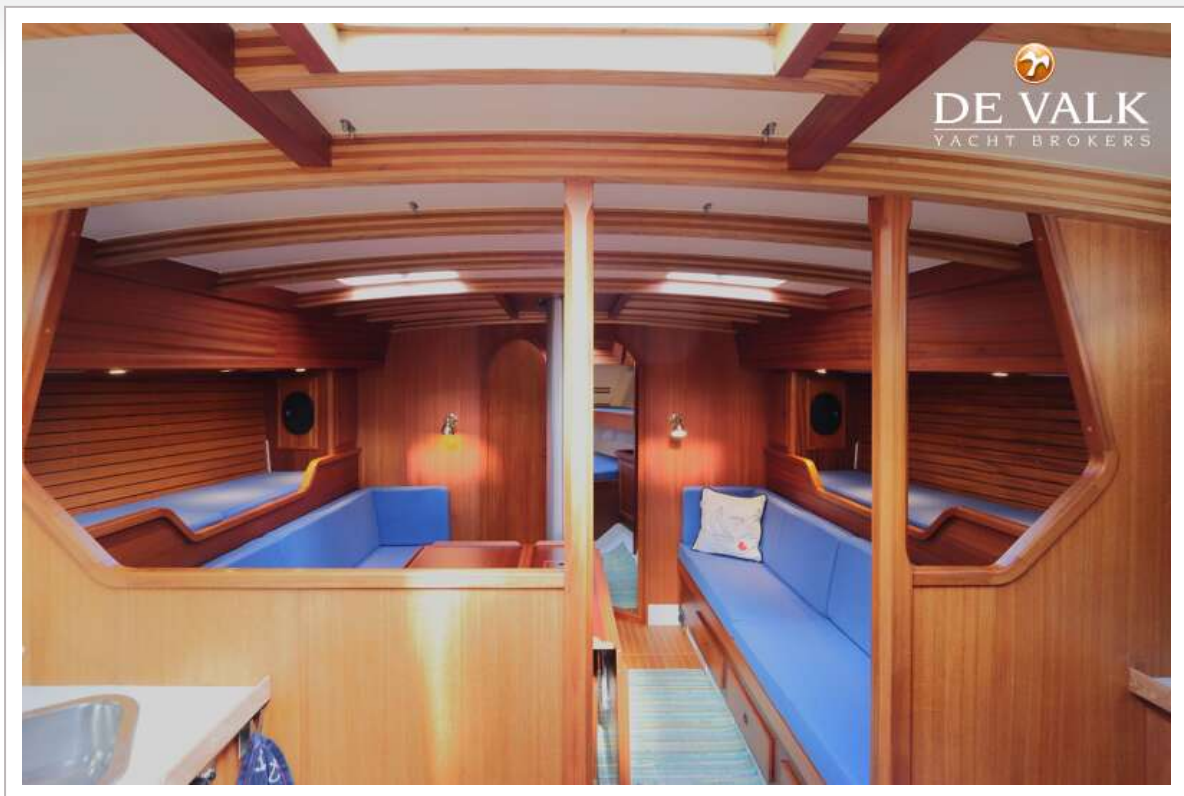


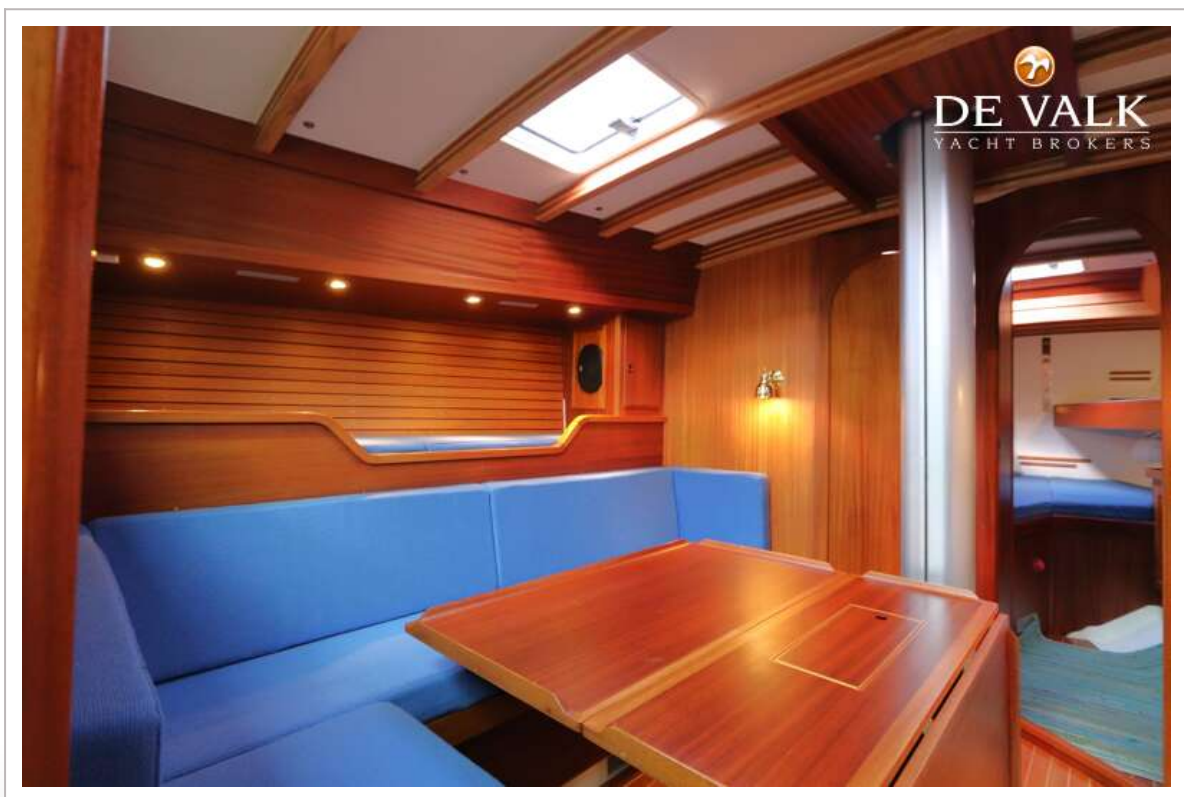
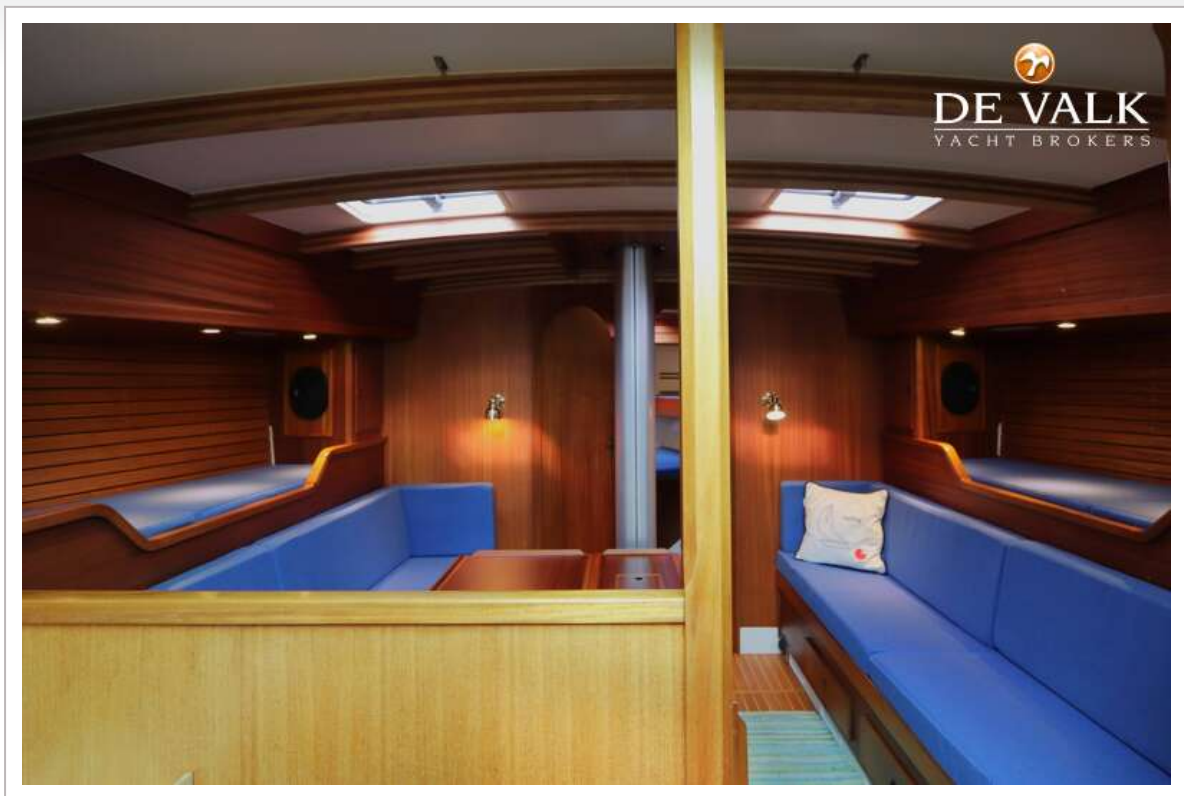
BRUCE ROBERTS 493

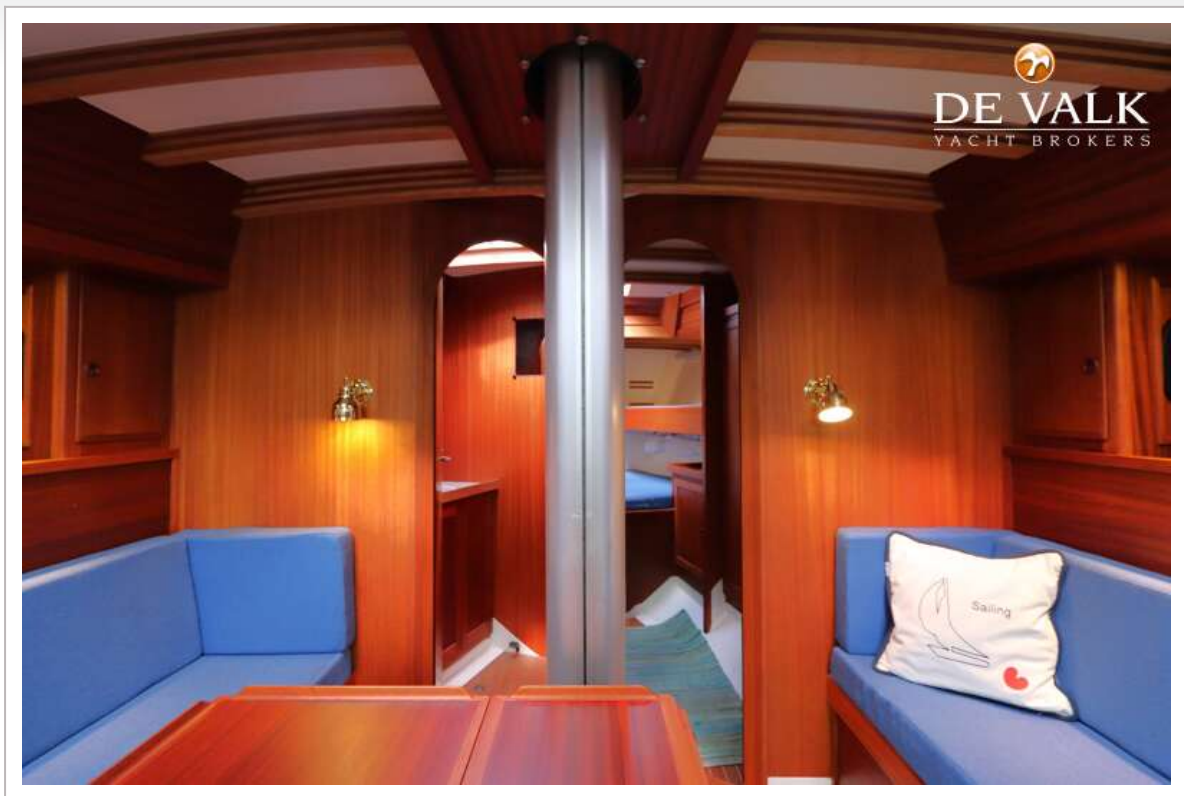


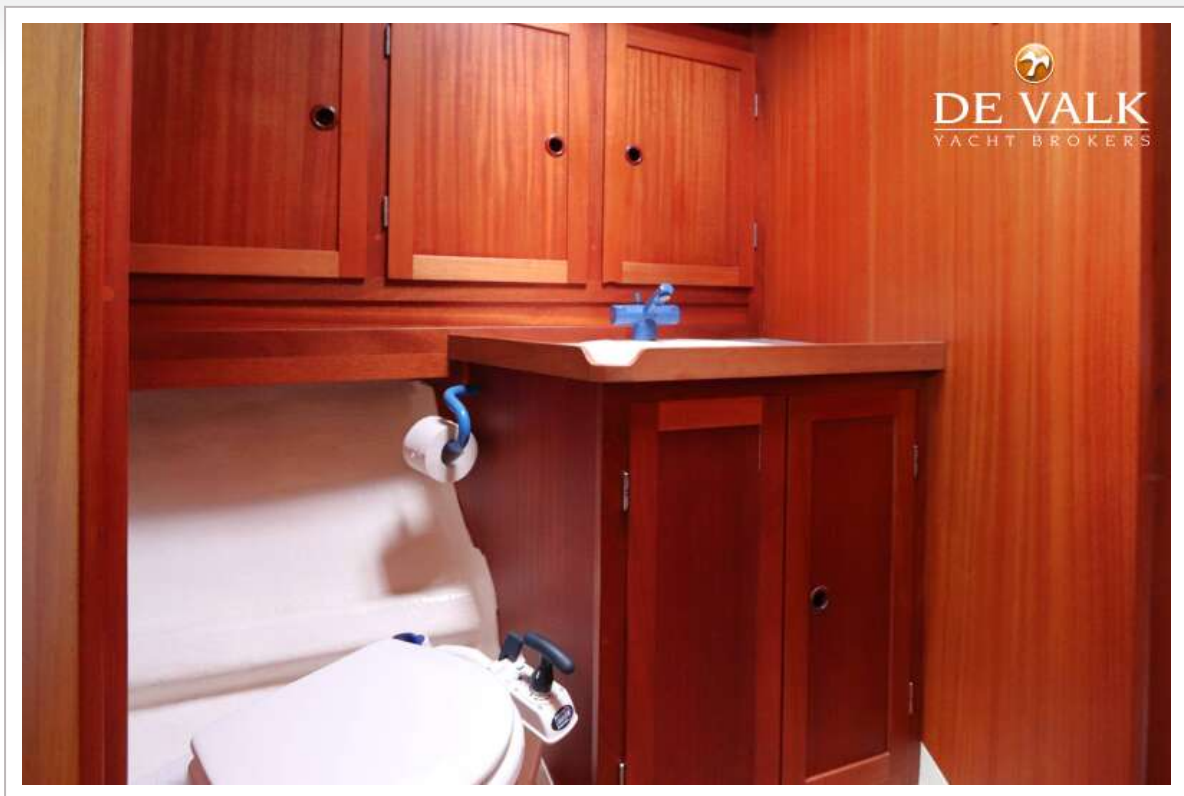


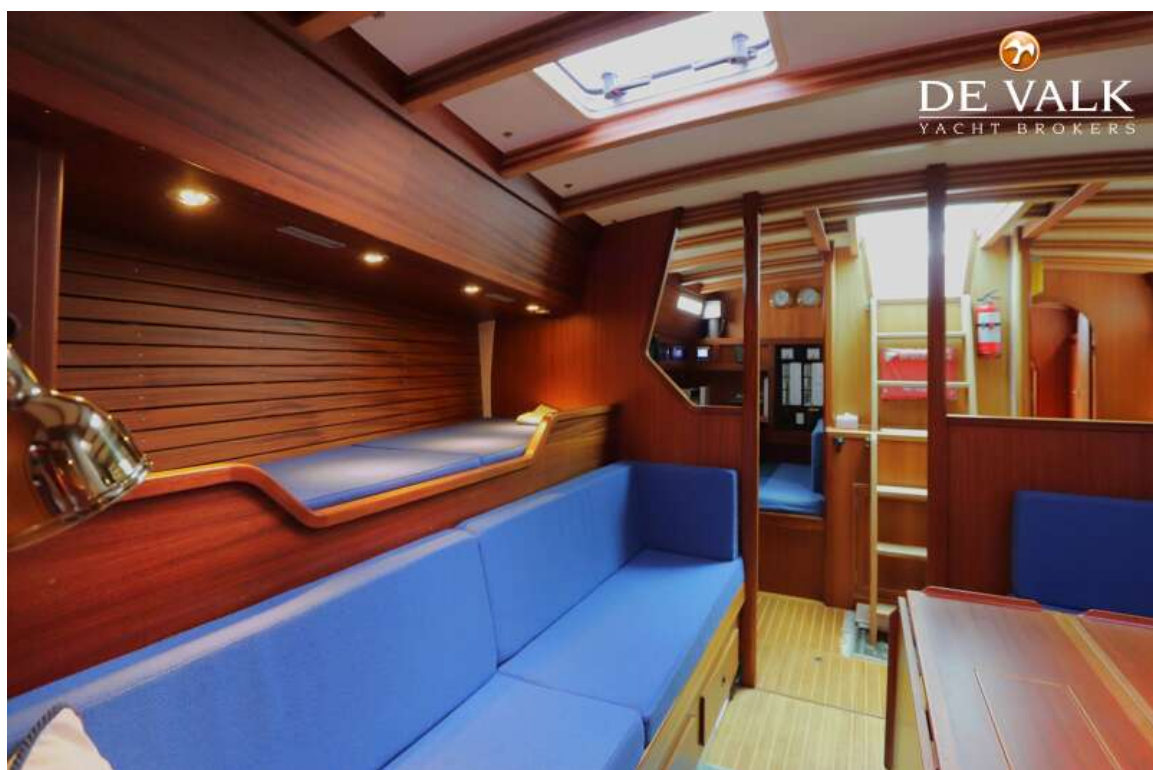
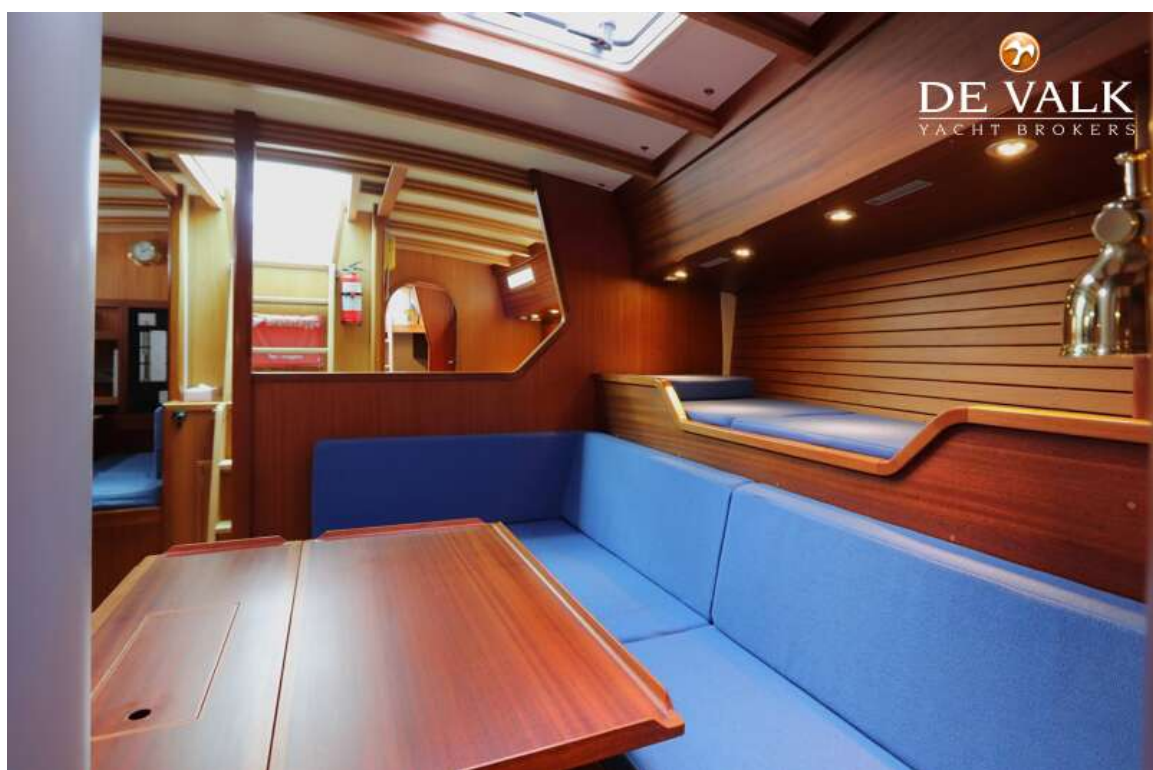














BRUCE ROBERTS 493





