



DE VALK
YACHT BROKERS



NAUTOR SWAN 43



DE VALK
YACHT BROKERS

NAUTOR SWAN 43

BROKER'S COMMENTS

Swan 43 is a true classic S/Y. The boat is strong structured & in many ways ideal for long range ocean sailing. She features a TRIM TAB at the trailing edge of the keel to enhance the lift characteristics of the keel & thus improve windward ability. A similar boat carried E.N.Smith to the North Pole in 1976 & earned for him the Blue water medal awarded by the Cruising Club of America. A head turner in every harbor she appears all over the world. Very well maintained & kept in top condition by her owner. She is not only a beauty but also easy to sail & free of big expenses for the coming years.

Sofia Ilia-Salvanou

SPECIFICATIONS

Dimensions	13.04 x 3.55 x 1.64 (m)	Builder	OY Nautor AB
Built	1970	Cabins	3
Material	GRP	Berths	7
Engine(s)	1 x Lombardini LDW 2204M diesel	Hp/Kw	60.00 (hp), 44.10 (kw)
Asking price	sold (VAT)	Lying	at sales office

CONTACT

Sales office	De Valk Corfu	Telephone	(+30) 266 111 8095
Address	New Port of Corfu, near Gouvia Marina 490 83 Corfu GR	E-mail	corfu@devalk.nl

DISCLAIMER

These particulars are given in good faith as supplied but cannot be guaranteed.



GENERAL

Model	NAUTOR SWAN 43
Type	sailing yacht
LOA (m)	13,04
LWL (m)	9,45
Beam (m)	3,55
Draft (m)	1,64
Year built	1970
Builder	OY Nautor AB
Country	Finland
Designer	Sparkman & Stephens
Displacement (t)	11
Ballast (tonnes)	lead
Gross tonnage	10 Gt (International)
CE norm	NA
Hull material	GRP
Hull colour	white
Keel type	fin keel
Superstructure material	GRP
Deck material	GRP
Deck finish	teak
Cockpit deck finish	teak
Antifouling (year)	2022
Window frame	stainless steel
Window material	polycarbonate
Insulation	foam
Fuel tank (litre)	stainless steel 150
Freshwater tank (litre)	289 Lt (189 Lt+ 100 Lt)
Blackwater tank (litre)	stainless steel
Blackwater tank extraction	pump
Wheel steering	chain steering Cable,



Outside helm position	yes
Emergency tiller	yes

ACCOMMODATION

Cabins	3
Berths	7
Interior	mahogany Teak,
Floor	teak and holly
Chart table	yes
Aft Cabin	yes
Dinette	yes
Galley	yes
Countertop	yes
Sink	stainless steel
Cooker	calor gas
Oven	yes
Fridge	yes
Water pressure system	electrical
Crockery	yes
Owners cabin	v-bed
Bed length (m)	2
Wardrobe	drawers and shelves
Bathroom	yes
Toilet system	manual
Wash basin	in the bathroom
Shower	en suite

MACHINERY

No of engines	1
Make	Lombardini
Type	LDW 2204M



HP	60
kW	44.10
Fuel	diesel
Year installed	2007
Maximum speed (kn)	8
Cruising speed (kn)	7,2
Consumption (l/hr)	5
Range (nm)	200
Engine hours	1500
Engine cooling system	Water
Saildrive seal	Volvo
Engine controls	bowden cable
Gearbox	mechanical
Exhaust	watercooled
Propeller type	feathering MAXPROP
Propeller blades	4
Propeller shaft material	stainless steel
Shaft lubrication	water
Manual bilge pump	yes
Electric bilge pump	yes
Batteries	yes
Start battery	100AH
Service battery	2X 125AH
Battery monitor	yes
Battery charger	yes
Inverter	yes
Solar panel	yes
Shorepower	with cable

NAVIGATION

Compass	yes
---------	-----



Depth sounder	yes
Depth sounder/log	yes
Repeater	yes
VHF	yes
Autopilot	yes
Rudder angle indicator	yes
Plotter/GPS	yes
Navtex	yes
EPIRB	yes
Navigation lights	yes
Searchlight	yes

EQUIPMENT

Sprayhood	yes
Sun awning	yes
Cockpit cushions	yes
Cockpit table	yes
Bathing platform	yes
Boarding ladder	wood
Deck shower	yes
Anchor	Rocna 25Kg
Anchor chain	70m
Anchor 2	CQR Plough
Anchor chain	yes
Windlass	electrical
Dinghy	inflatable
Outboard	MERCURY 3,3
Sea railing	stainless steel
Life raft	container EUROVINIL
Last life raft survey	2022
Lifejackets	yes



Safety harness	yes
Binocular	yes
Radar reflector	yes
Fenders	yes
Mooring lines	yes
Spare parts	yes
Tools	yes
Radio-cd player	yes
Speakers in salon	yes
Clock - barometer	yes
Fire extinguisher	yes
Latest extinguisher survey	2022

RIGGING

Rigging	sloop
Standing rigging	wire
Material mast	aluminium
Spreaders	yes
Keel stepped mast	yes
Mainsail	yes
Mainsail cover	yes
Genoa	yes
Genoa furler	yes
A-symetric spi	yes
Stormjib	yes
Backstay adjuster	mechanical
Primary sheet winch	yes
Genoa sheetwinches	yes
Halyard winches	yes
Spinnaker winch	yes
Reefing winch	yes



Multifunctional winches

yes

Spi-pole

aluminium

Gennaker pole

aluminium



NAUTOR SWAN 43



NAUTOR SWAN 43



NAUTOR SWAN 43



NAUTOR SWAN 43



NAUTOR SWAN 43



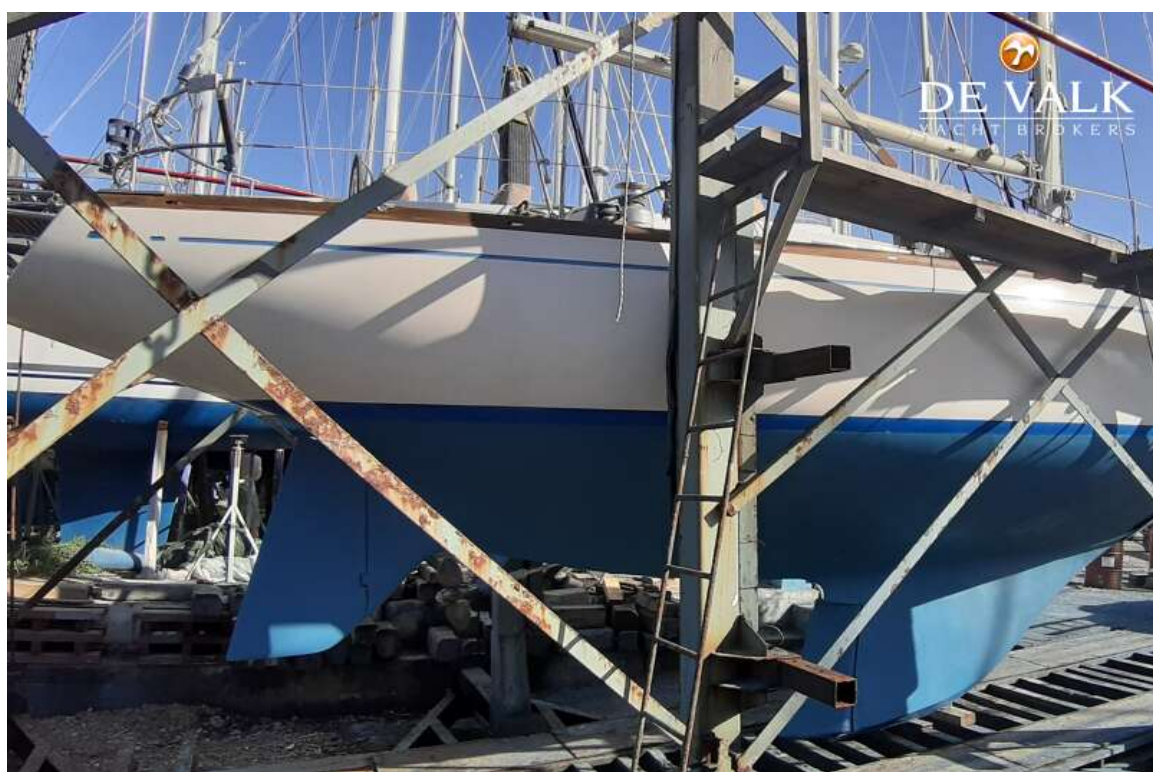
NAUTOR SWAN 43



NAUTOR SWAN 43



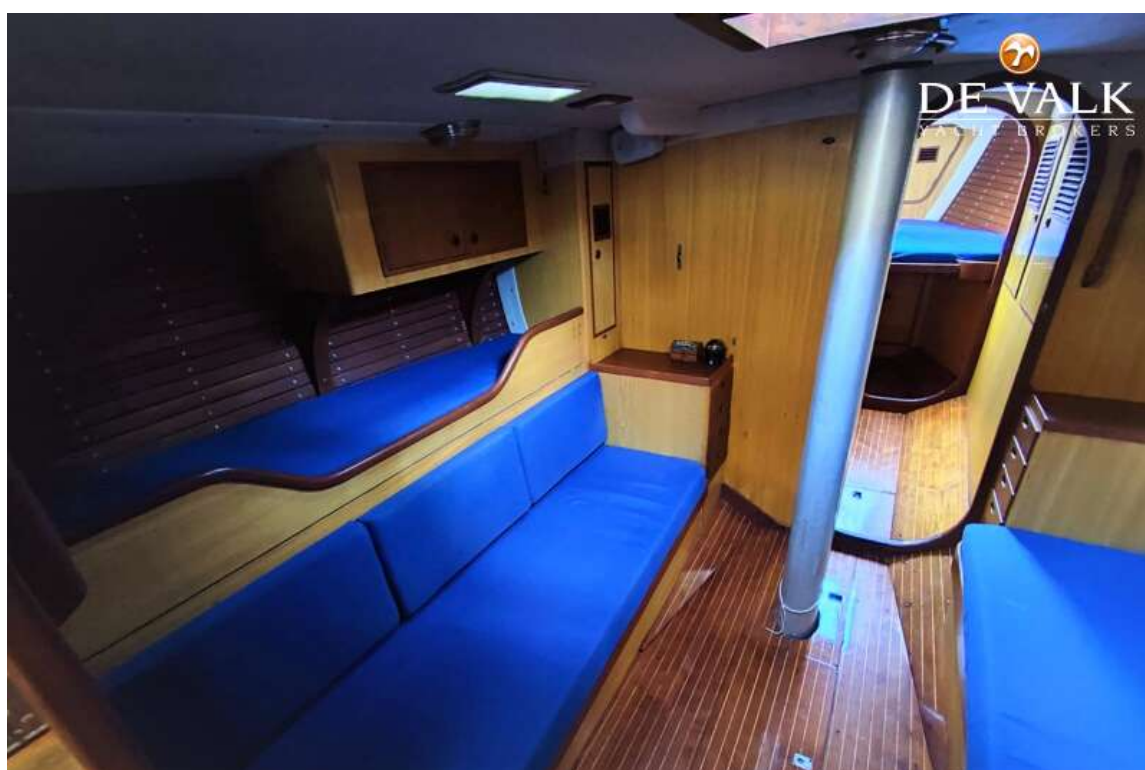
NAUTOR SWAN 43



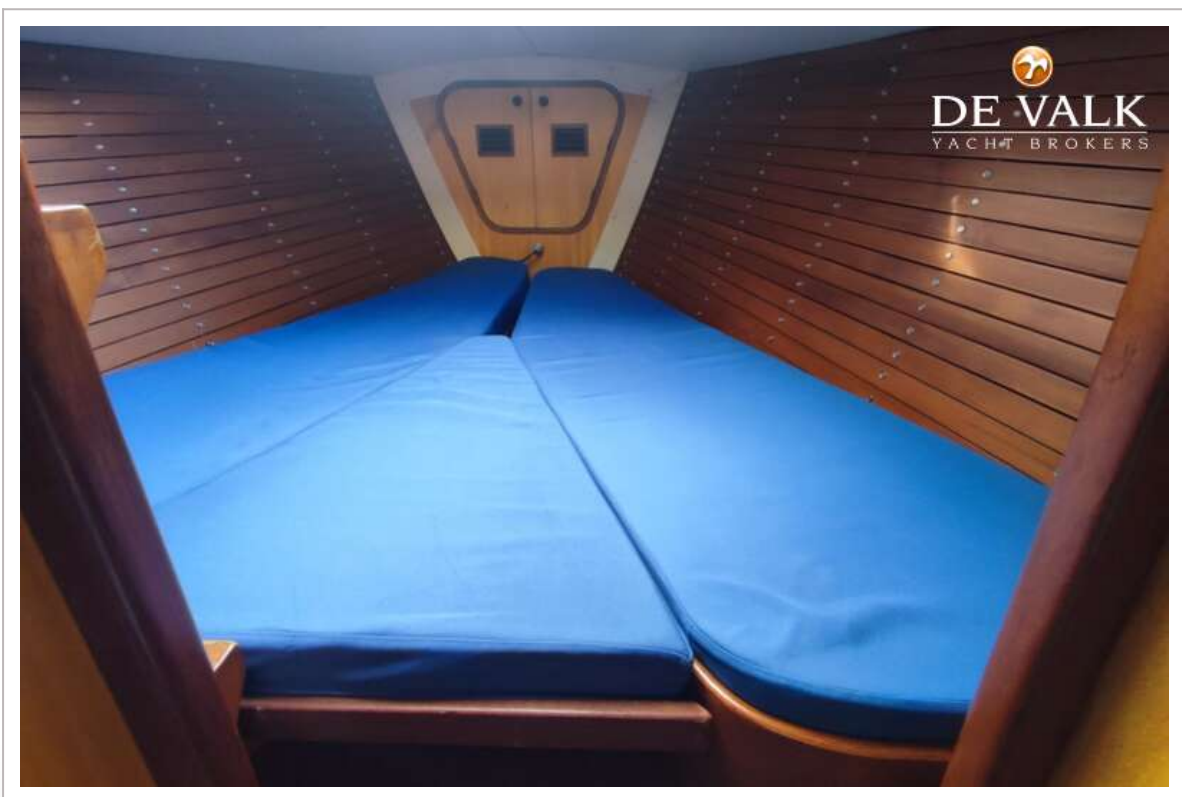
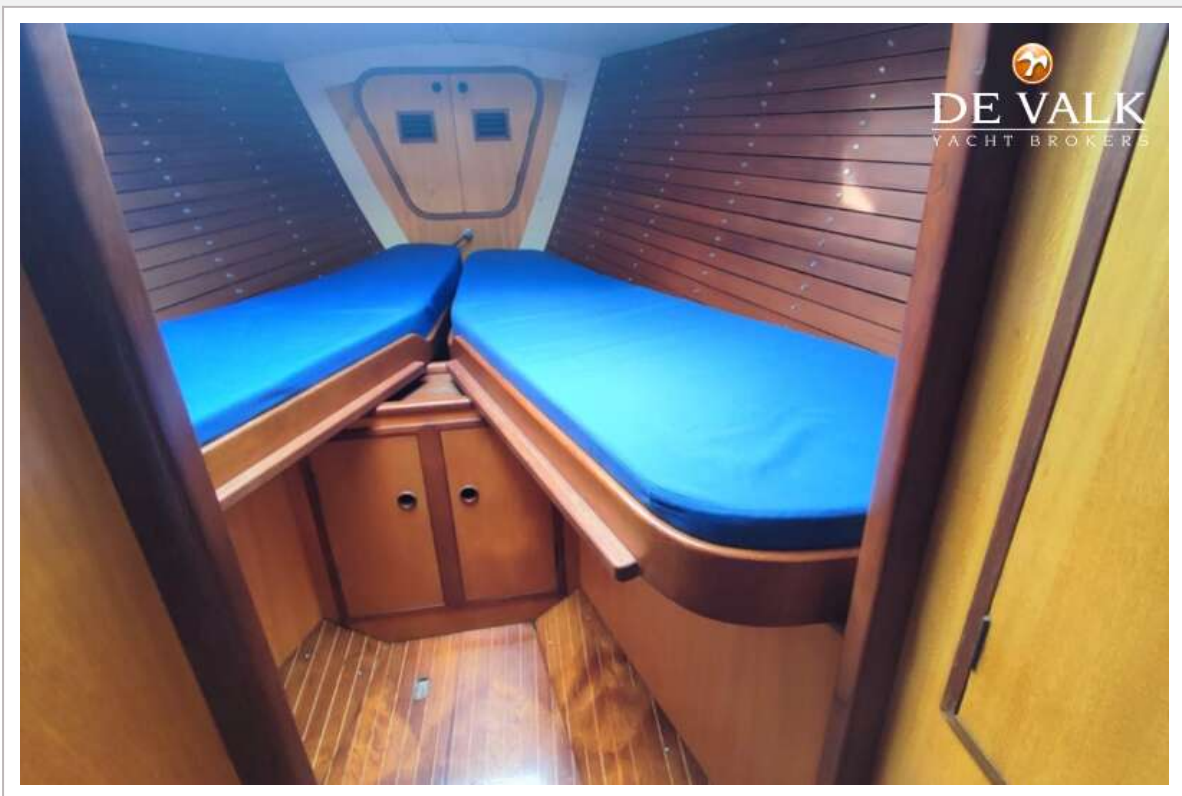
NAUTOR SWAN 43



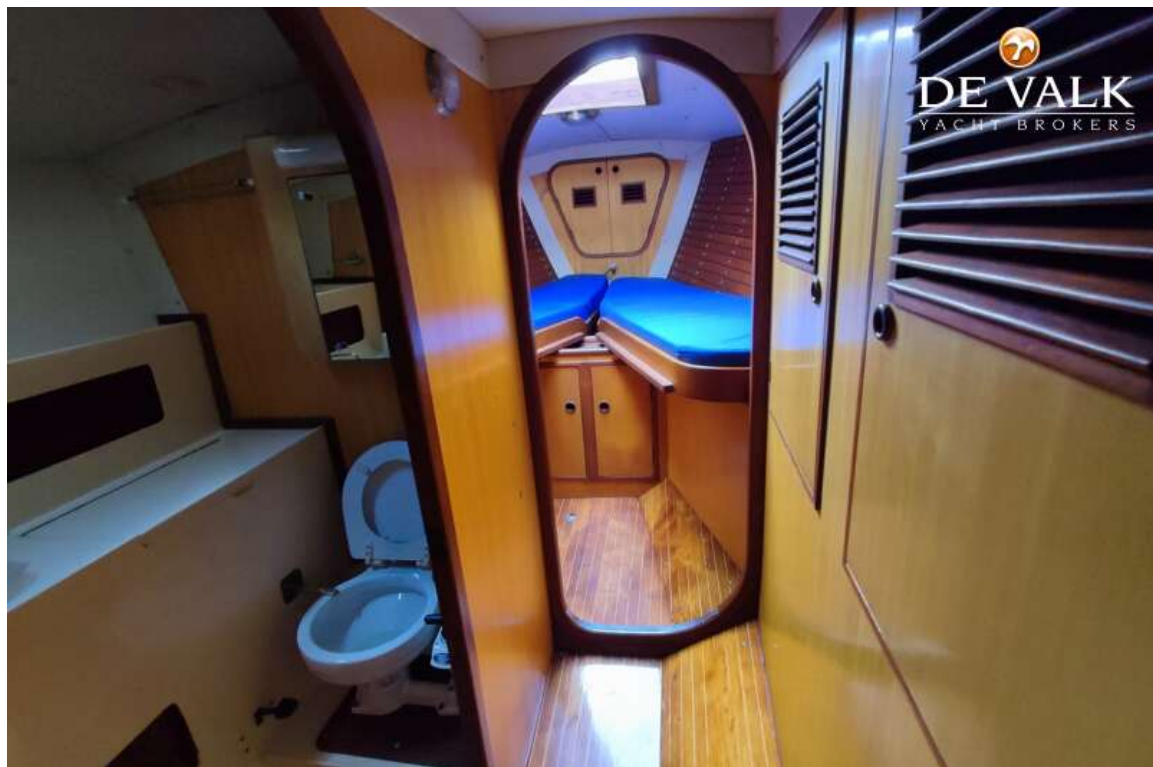
NAUTOR SWAN 43



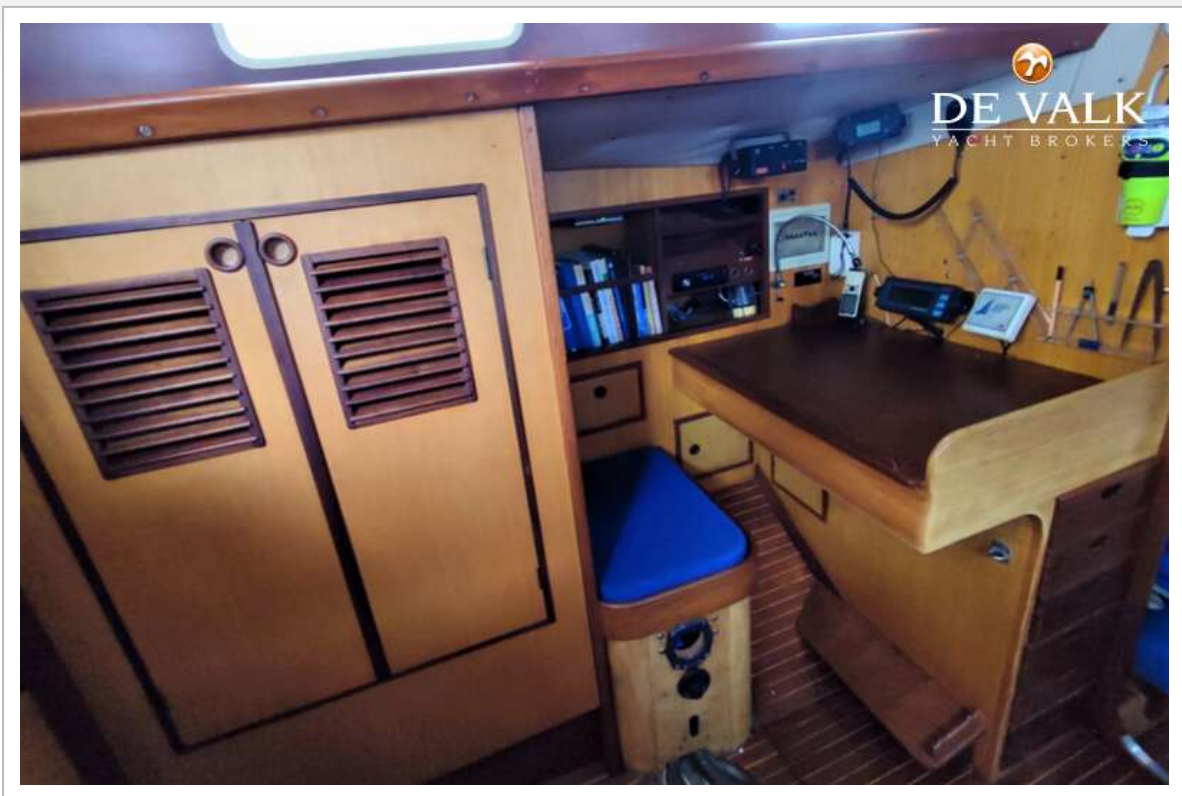
NAUTOR SWAN 43



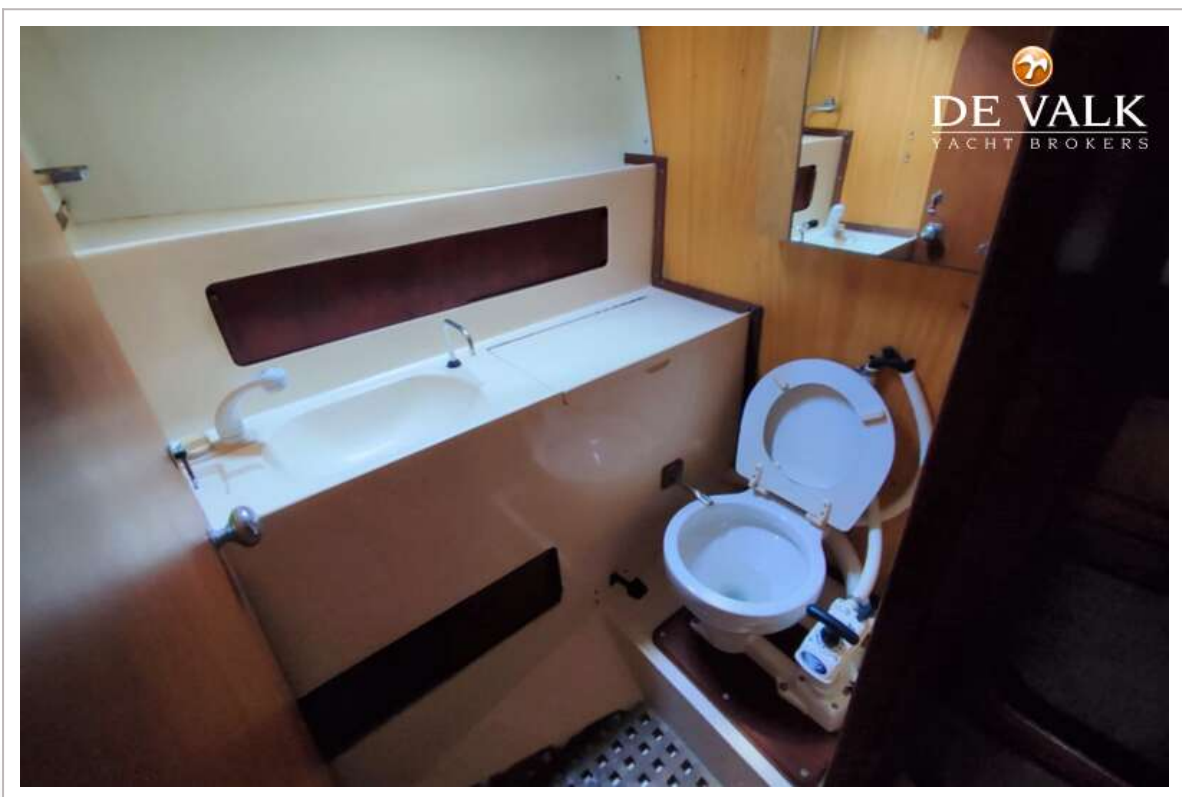
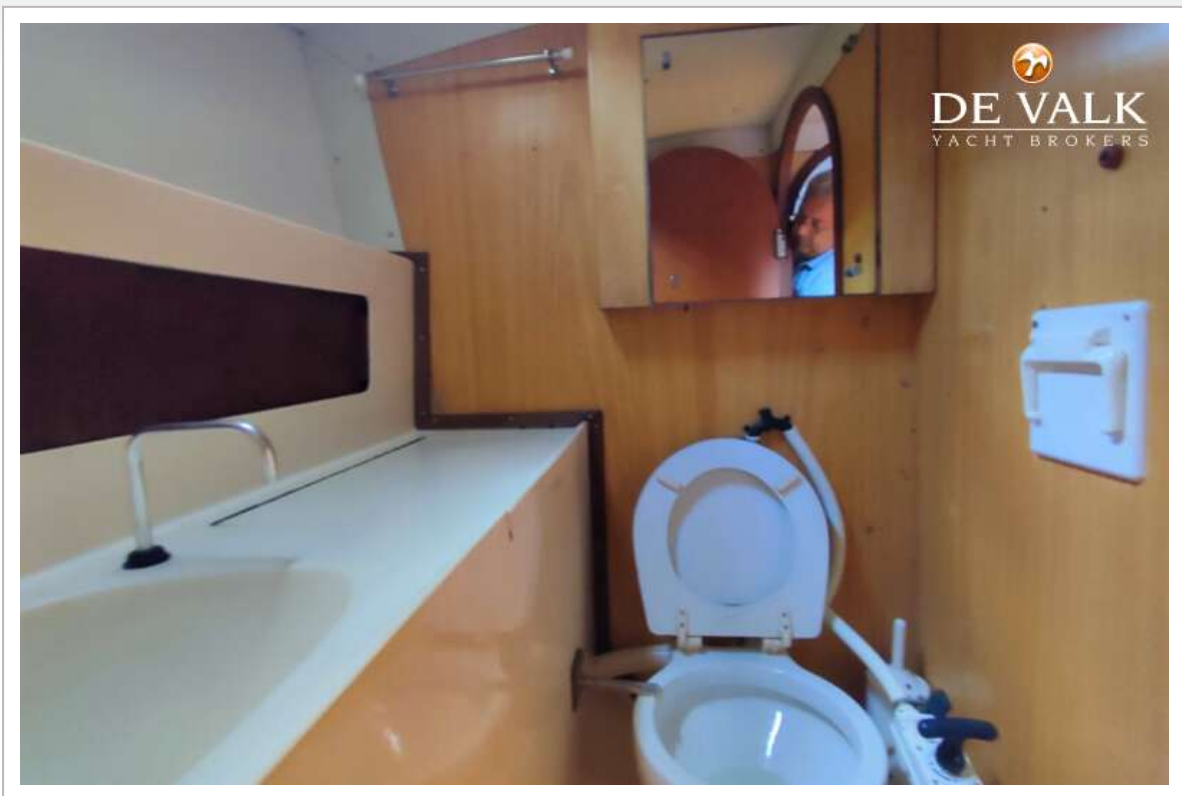
NAUTOR SWAN 43



NAUTOR SWAN 43



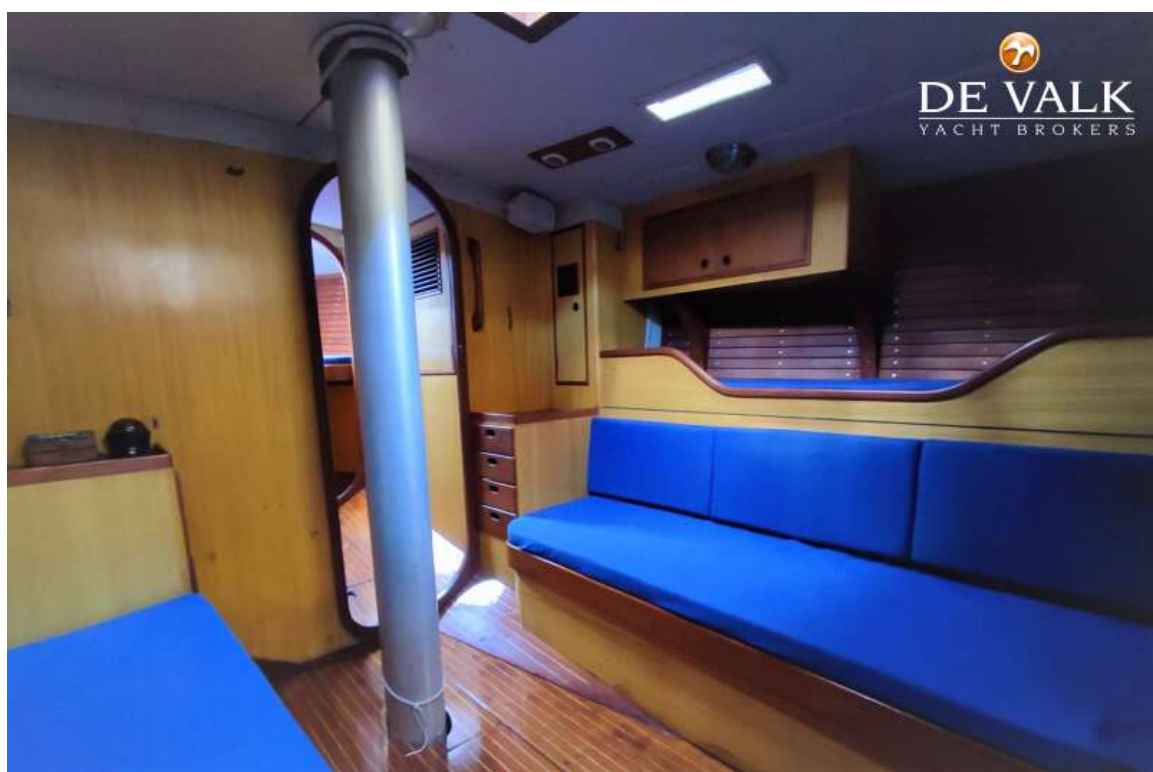
NAUTOR SWAN 43



NAUTOR SWAN 43



NAUTOR SWAN 43



NAUTOR SWAN 43

