



## CUSTOM EXPLORER TRAWLER 1800

# CUSTOM EXPLORER TRAWLER 1800

## BROKER'S COMMENTS

True Explorer Trawler from the professional Heijmans & FSW Welgelegen yard in the Netherlands. This long range Bekebrede Trawler with Portugese bridgedeck has lots to offer to explore those far away shores. She has visited those places and has proven herself to be reliable safe and rugged. She comes well equipped for that and lots of live onboard comfort as well. She is purpose built and not a "floating gin palace". The impressive roundbilged hull with stabilisers shows her true character well. When this is what you are looking for, she is the Trawler that deserves your attention.

*Marc Weijenberg*

## SPECIFICATIONS

<b>Dimensions</b>	18.45 x 5.25 x 2,00 / 1.80 (m)	<b>Builder</b>	Heijmans Scheepsbouw & FSW Welgelegen
<b>Built</b>	2000	<b>Cabins</b>	4
<b>Material</b>	Steel	<b>Berths</b>	6
<b>Engine(s)</b>	1 x MAN D2866E diesel	<b>Hp/Kw</b>	242.00 (hp), 178.11 (kw)
<b>Asking price</b>	sold (VAT )	<b>Lying</b>	elsewhere / Not at sales office

## CONTACT

<b>Sales office</b>	De Valk Thuishaven	<b>Telephone</b>	+31 35 5829042
<b>Address</b>	Peperstraat 7 1411 PX Naarden NL	<b>E-mail</b>	thuishaven@devalk.nl

## DISCLAIMER

These particulars are given in good faith as supplied but cannot be guaranteed.



# CUSTOM EXPLORER TRAWLER 1800

## GENERAL

Model	CUSTOM EXPLORER TRAWLER 1800
Type	motor yacht
LOA (m)	18,45
Beam (m)	5,25
Draft (m)	1,80
Draft min (m)	2,00
Air draft (m)	5,30
Air draft min (m)	11,30
Headroom (m)	1,95
Year built	2000
Builder	Heijmans Scheepsbouw & FSW Welgelegen
Country	The Netherlands
Designer	Martin Bekebrede
Displacement (t)	60
Ballast (tonnes)	4
Hull material	steel
Hull colour	blue
Hull thickness (mm)	6 mm, 500mm rib-distance
Hull shape	round-bilged
Superstructure material	steel 5mm
Rubbing strake	steel
Deck material	steel 5mm
Deck finish	non-skid paint
Cockpit deck finish	non-skid paint
Window frame	aluminium
Window material	double glazing Hora 10mm security glass
Deckhatch	yes
Portholes	brass
Insulation	Durac L 20mm + Rockwool 40mm
Mast can be lowered	electric



# CUSTOM EXPLORER TRAWLER 1800

Steadying sail with mast	yes
Fuel tank (litre)	steel 2 x 3000
Fuel tank 2 (litre)	steel 2 x 1400
Freshwater tank (litre)	steel 2 x 2500
Blackwater tank (litre)	steel 2500
Blackwater tank extraction	deck extraction + pump
Wheel steering	Powersteering assisted (with twin hydraulic cylinders)
More info on paintwork	hull painted (2020)
Extra info	Heavy duty build hull with strakes, fish-tail rudderblade in skeg and propeller in nozzle for better performance.
Extra info	CBB/CVO valid certification

## ACCOMMODATION

Cabins	4
Berths	6
Crew berths	2
Interior	Cherry panels
Floor	teak and holly
Aft deck	yes
Pilot house	with helmsman seat, L-shape seating and two sliding doors to deck
Deck saloon	yes
Saloon	with U-shaped settee
Headroom saloon (m)	1,95
Heating	central hot water Elco 29Kw (diesel 220v)
Chart table	yes
Dinette	yes
Opening door to cockpit	"stable" type split door
Galley	yes
Countertop	Corian
Sink	stainless steel
Cooker	electric Siemens HF73950 (ceramic, 220v)



# CUSTOM EXPLORER TRAWLER 1800

Extractor	yes
Microwave/oven combi	electric Siemens HF73950
Fridge	Liebherr
Freezer	Liebherr
Hot water system	220V or central heating 100 ltr
Water pressure system	yes
Dishwasher	Miele G1370 SCVI
Owners cabin	double bed
Bed length (m)	with comfort mattress 2,00 x 1,60
Wardrobe	hanging/drawers/shelves
Bathroom	separate I
Toilet	shared
Toilet system	electric
Wash basin	in the bathroom
Shower	separate
Guest cabin 1	double bed
Bed length (m)	2,00 x 1,20
Wardrobe	hanging/drawers/shelves
Bathroom	separate II
Toilet	separate
Toilet system	electric
Wash basin	in the bathroom
Guest cabin 2	single bed
Bed length (m)	2,00 x 0,80
Wardrobe	hanging/drawers/shelves
Guest cabin 3	single bed
Bed length (m)	2,00 x 0,80
Wardrobe	hanging/drawers/shelves
Washing machine	AEG Öko Lavamat 86728
Extra info	There is an abundance of extra storage space; cupboards, shelves, under floor storage areas.



# CUSTOM EXPLORER TRAWLER 1800

## MACHINERY

No of engines	1
Make	MAN
Type	D2866E
HP	242
kW	178.11
Fuel	diesel
Year installed	2000
Maximum speed (kn)	9,5
Cruising speed (kn)	8
Consumption (l/hr)	20
Range (nm)	3500
Engine hours	3700
Engine cooling system	closed keelcooling
Drive	shaft
Engine controls	yes
Gearbox	hydraulic Twin disc MG5091, reduction 2.95:1
Bowthruster	hydraulic 29 hp
Exhaust	dry
Propeller type	fixed 4 bladed, 900 mm propeller
Shaft lubrication	grease Automatic
Electric bilge pump	main 24v pump with valve selector for bilges etc.
Electrical installation	24v/220v/380v
Generator	silent separator Lister Petter 380v/30kVA (in soundproofing box)
Running hours generator	3400
Generator 2	wet exhaust Vetus GLX6 220v/6kVA (in soundproofing box, 2020)
Start battery	2 x
Service battery	4 x (2020)
Navigation Battery	2 x
Generator battery	with own charger 2 x
Battery monitor	yes



# CUSTOM EXPLORER TRAWLER 1800

Battery charger	Mastervolt Mass 24v/100a
Inverter	Mastervolt SINE 24v/220v/3000watt
Shorepower	with cable
Stabilizers	fin Matn's Stabilizers (2006)

## NAVIGATION

Compass	in brass binacle
Electric compass	highly accurate Furuno satellite compass
Depth sounder	Raymarine ST60 + Raymarine plotter/sonar (2020)
Log	Furuno
VHF	Furuno FM-8500
Autopilot	Robertson AP45 + remote
Rudder angle indicator	Robertson RI9
Radar	Furuno dayscreen radar (open array)
GPS	Furuno GPS Navigator GP-31
Plotter	Koden GPS Track
Plotter/GPS	Raymarine Dragonfly-7 (2020)
Navtex	Furuno NX-300 navtex receiver
AIS transceiver	Koden class A - AIS transceiver
Transmitter	Furuno SSB tranceiver FS1550
Navigation lights	yes
Searchlight	yes
Loudhailer	Televox (internal phone system)

## EQUIPMENT

Cockpit cushions	1 x
Boarding ladder	yes
Anchor	2 x 70kg
Anchor chain	2 x approx. 100 mtr (16mm)
Windlass	electrical Rek & Horseman (380v via generator)
Capstan	electrical



# CUSTOM EXPLORER TRAWLER 1800

Deck wash	yes
Dinghy	rigid inflatable Carib 270
Outboard	Yamaha 9,9 hp (2 stroke)
Deck crane	Hiab (480kg) hydraulic + electric boom lift
Sea railing	steel
Grab rail (superstructure)	steel
Railing side opening gates	2 x
Life raft	container
Life raft (pers)	6
Last life raft survey	(expired)
Lifebuoy	2 x
Wiper	5 x Exalto
Horn	yes
Radar reflector	Firdell
Fenders	yes
Mooring lines	yes
TV	yes
Radio-cd player	yes
Clock - barometer	yes





# CUSTOM EXPLORER TRAWLER 1800

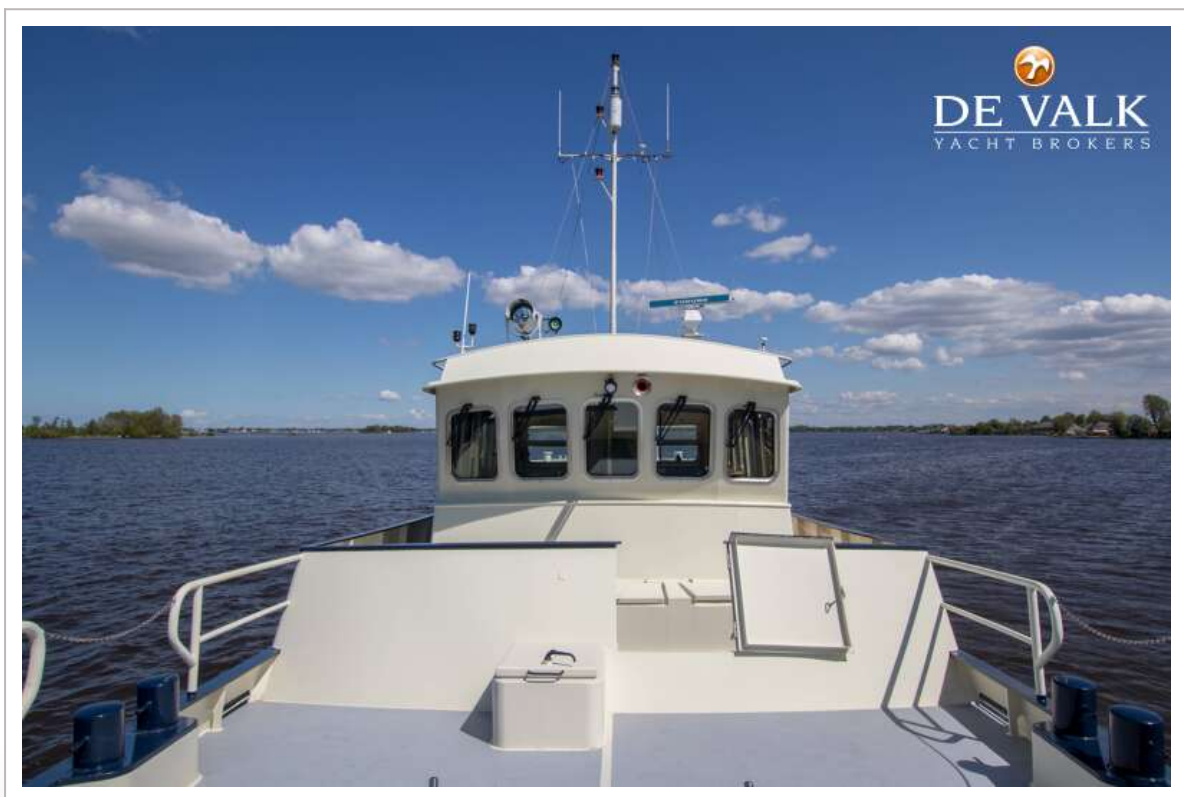


# CUSTOM EXPLORER TRAWLER 1800





# CUSTOM EXPLORER TRAWLER 1800

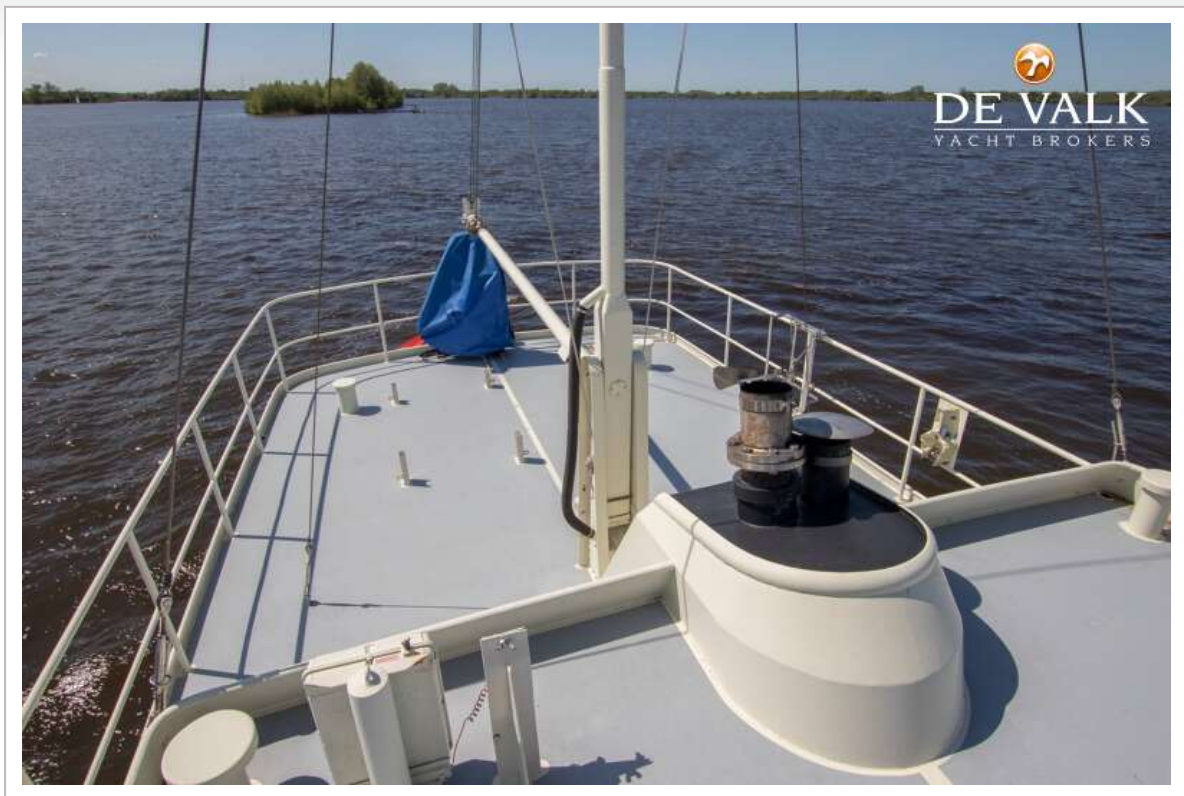


# CUSTOM EXPLORER TRAWLER 1800

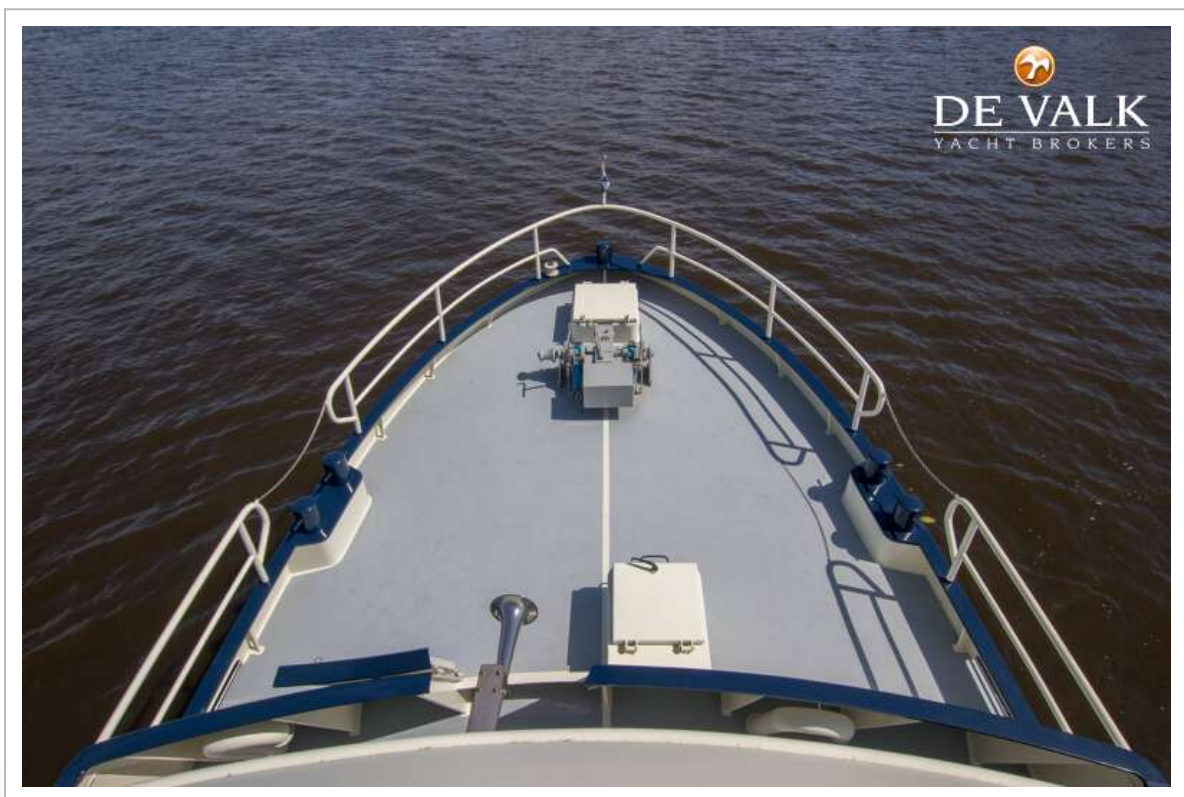
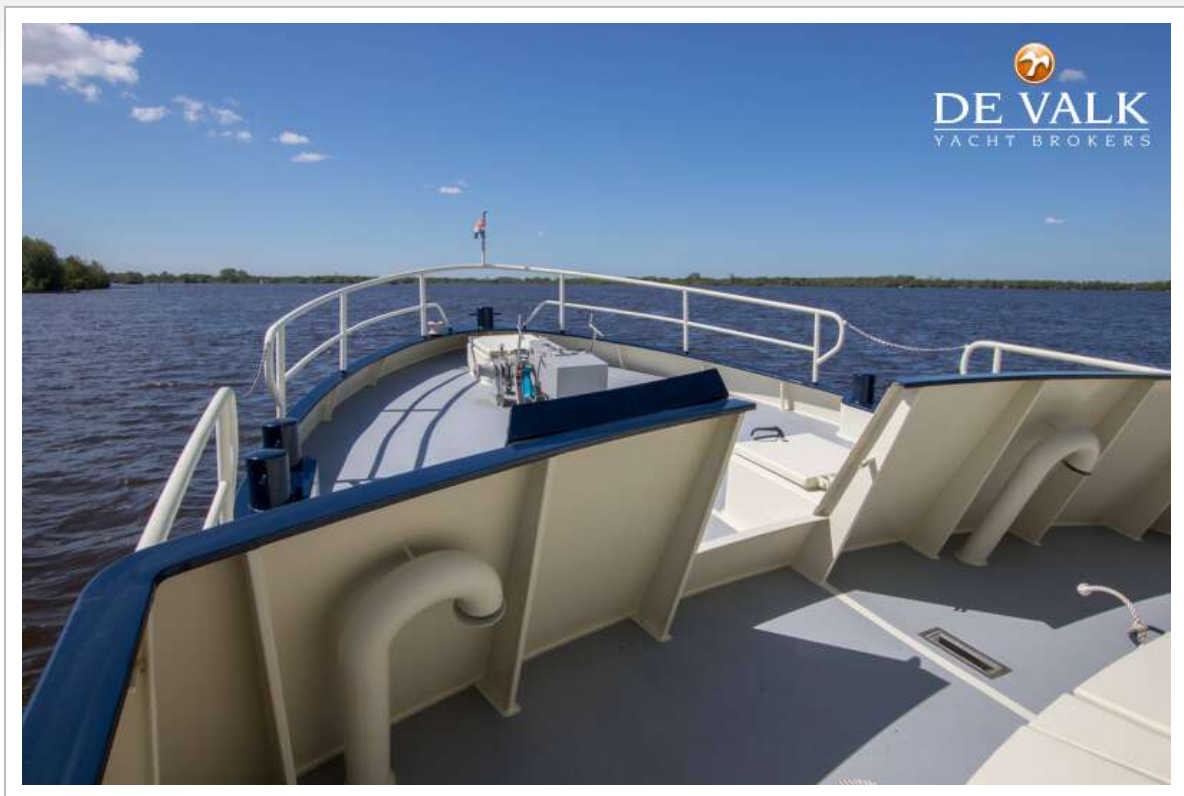




# CUSTOM EXPLORER TRAWLER 1800



# CUSTOM EXPLORER TRAWLER 1800

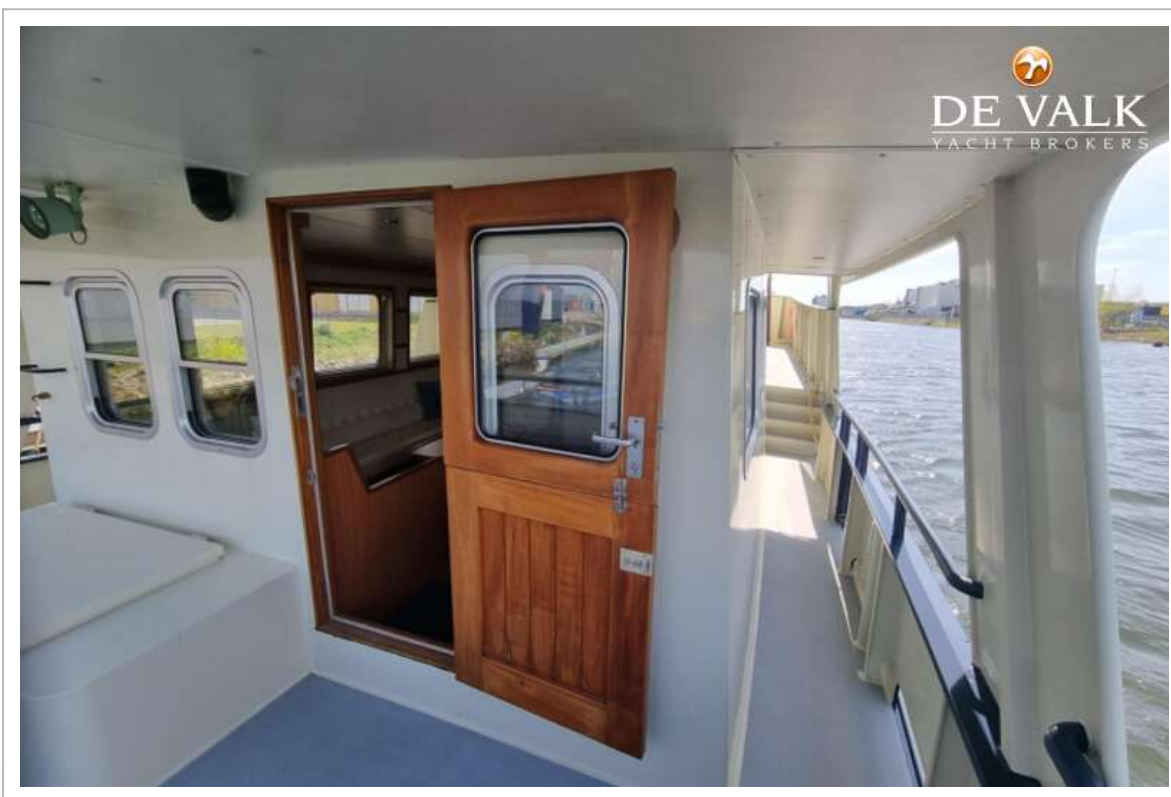




# CUSTOM EXPLORER TRAWLER 1800



## CUSTOM EXPLORER TRAWLER 1800

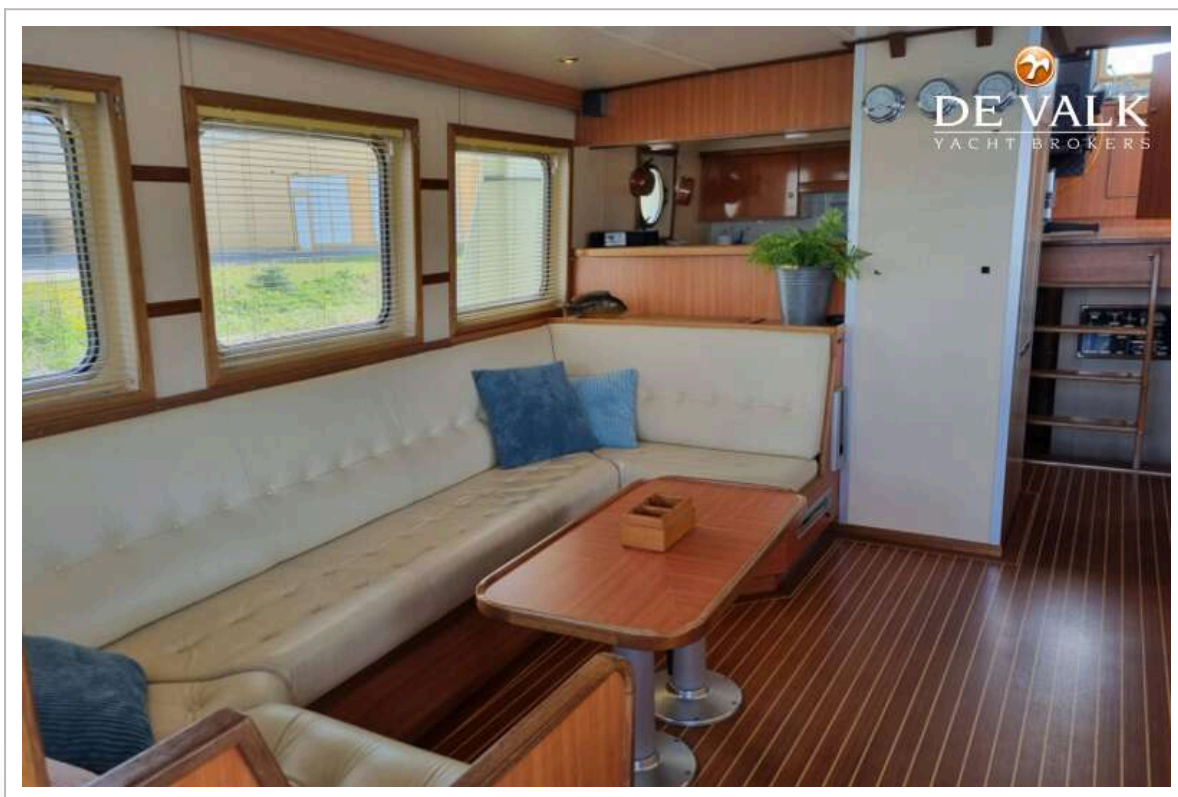
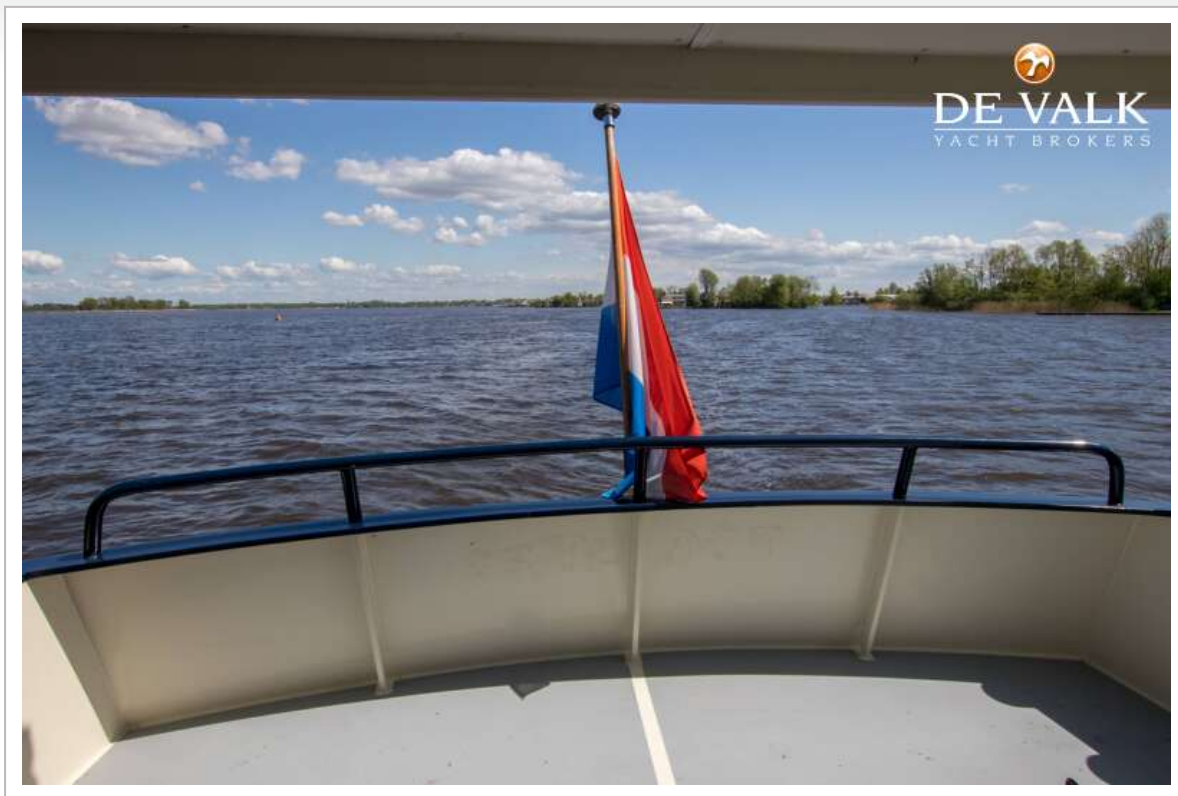




# CUSTOM EXPLORER TRAWLER 1800

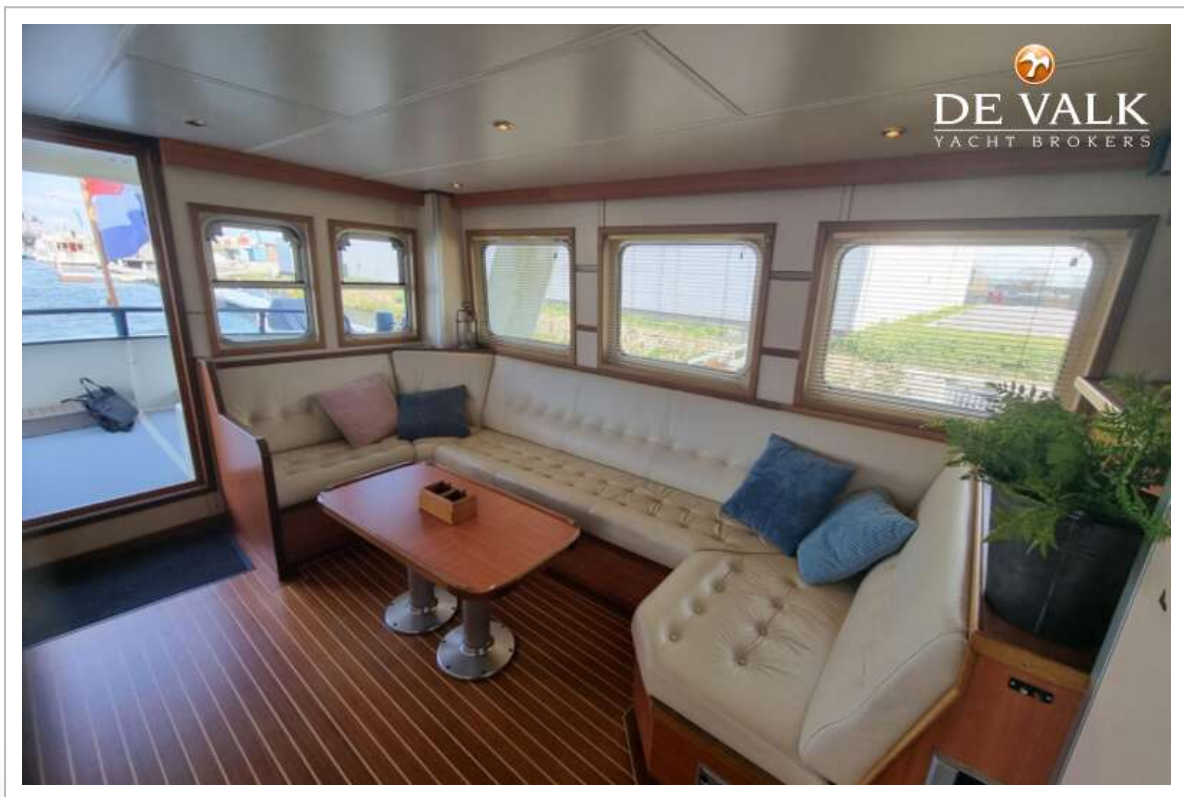


# CUSTOM EXPLORER TRAWLER 1800

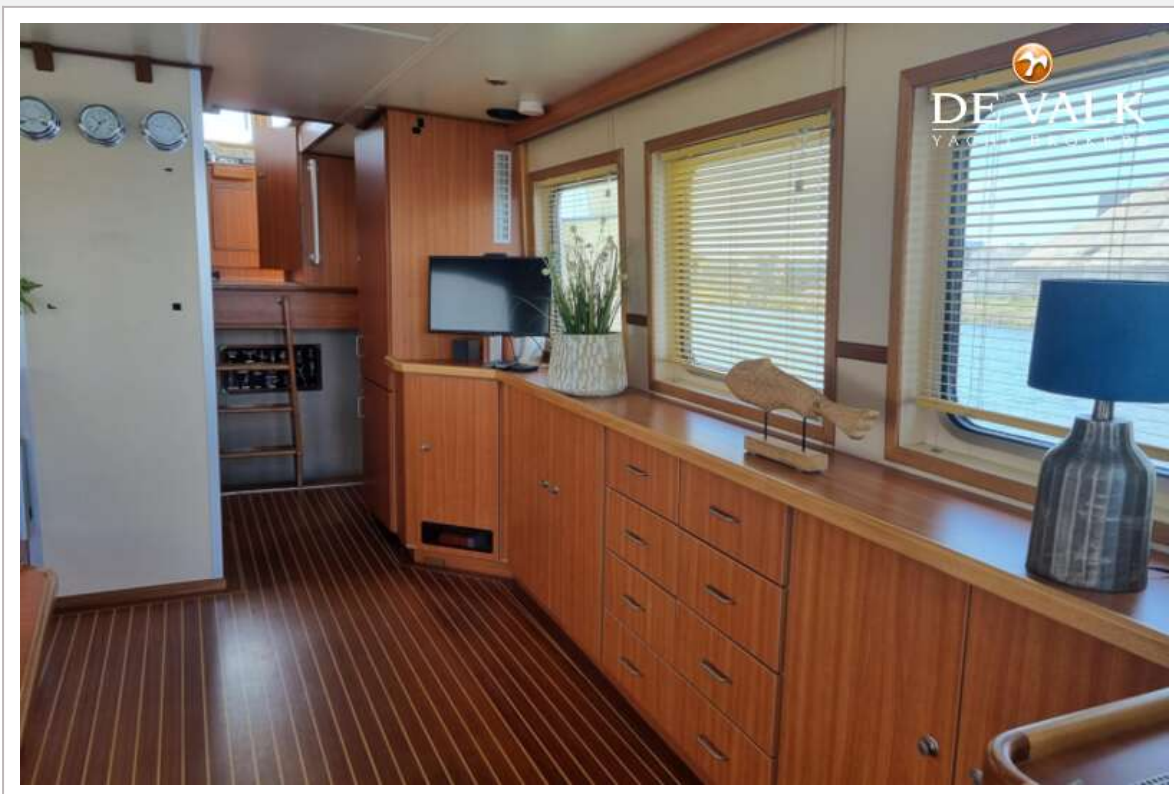




# CUSTOM EXPLORER TRAWLER 1800

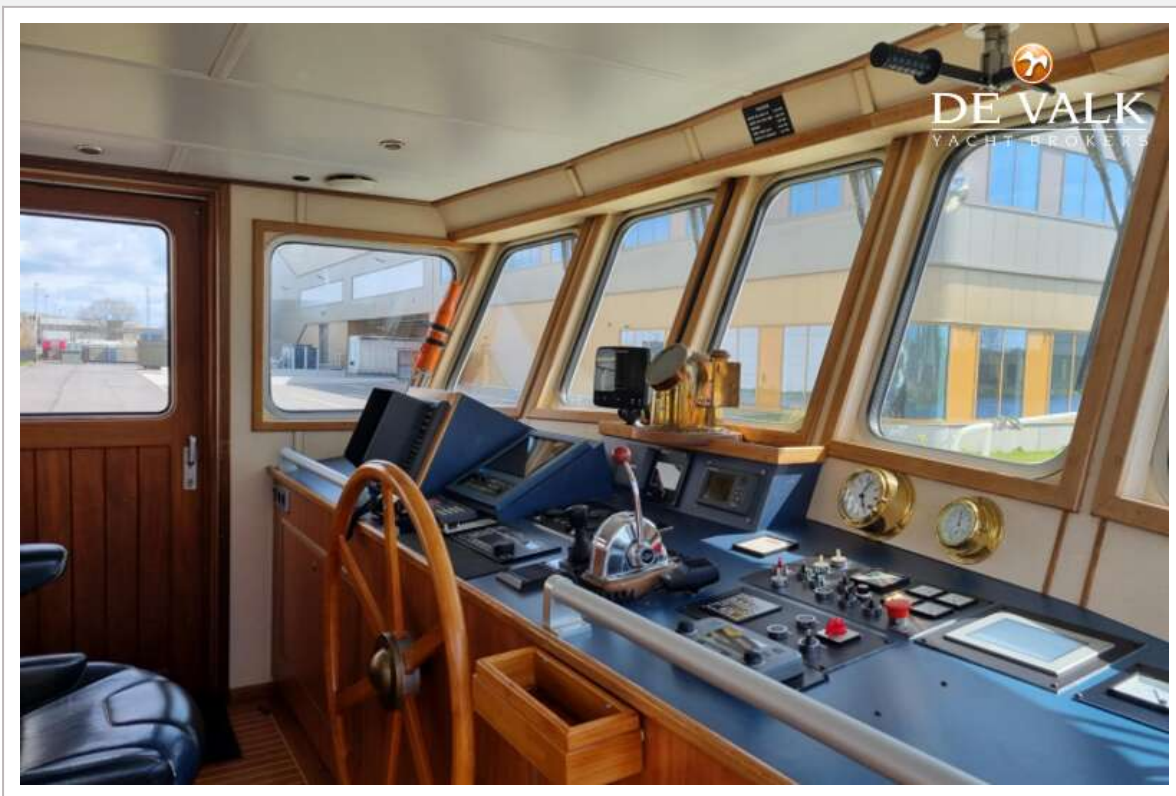


## CUSTOM EXPLORER TRAWLER 1800

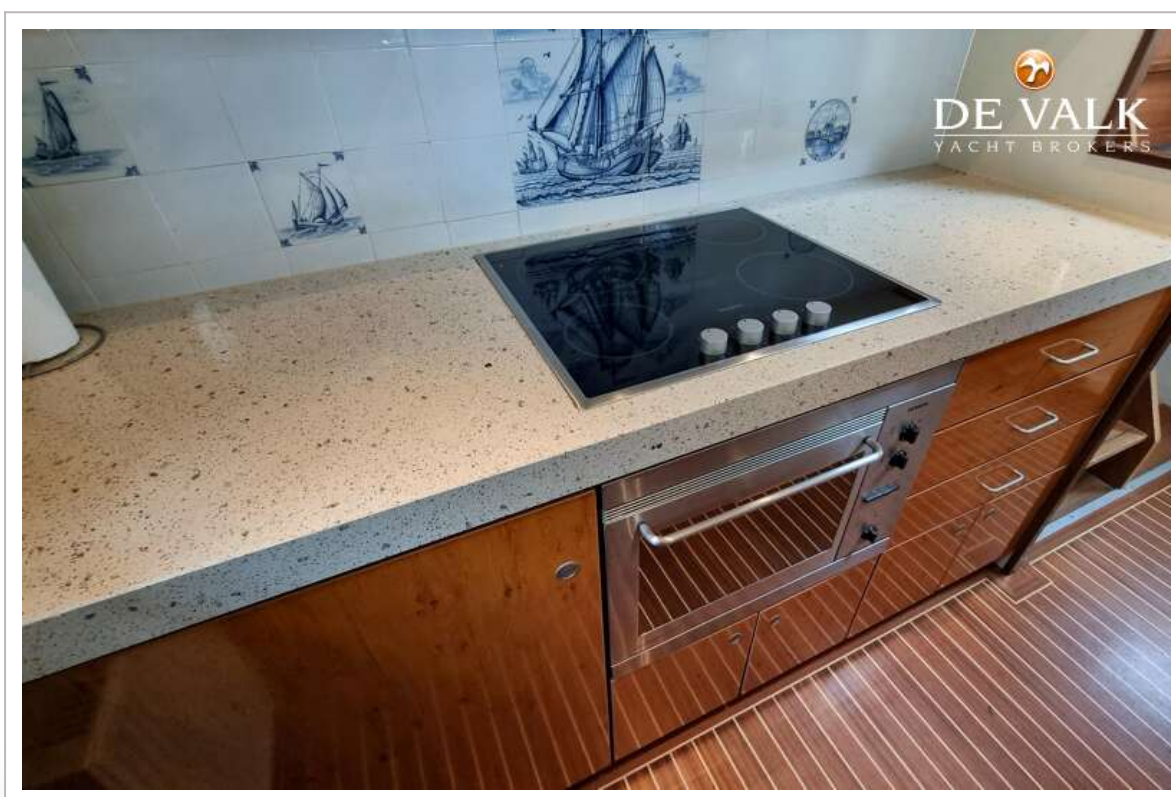




# CUSTOM EXPLORER TRAWLER 1800



# CUSTOM EXPLORER TRAWLER 1800

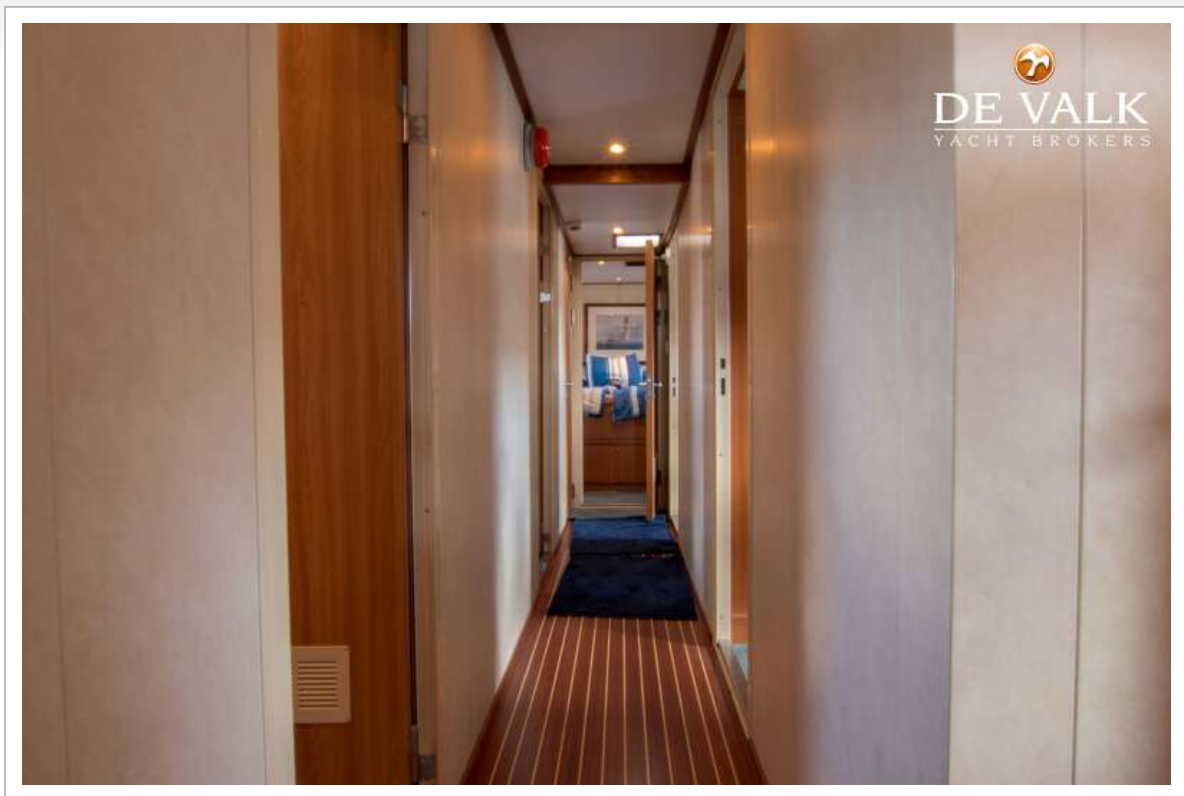




# CUSTOM EXPLORER TRAWLER 1800

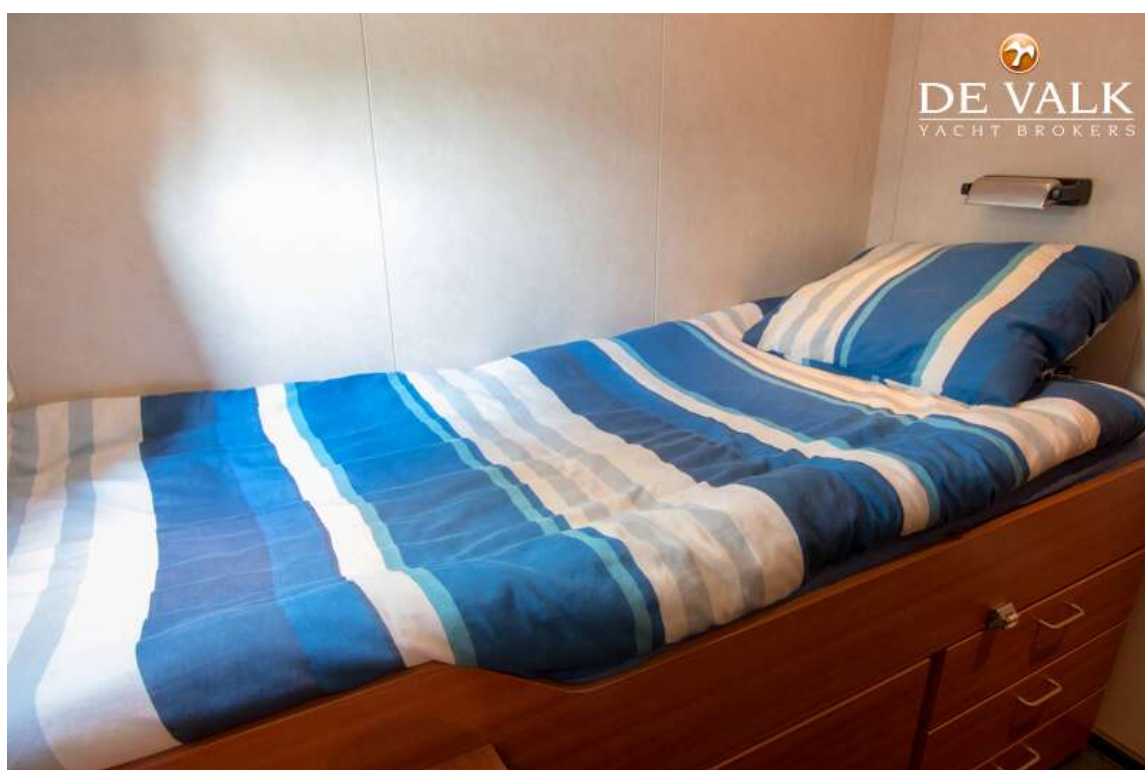


# CUSTOM EXPLORER TRAWLER 1800

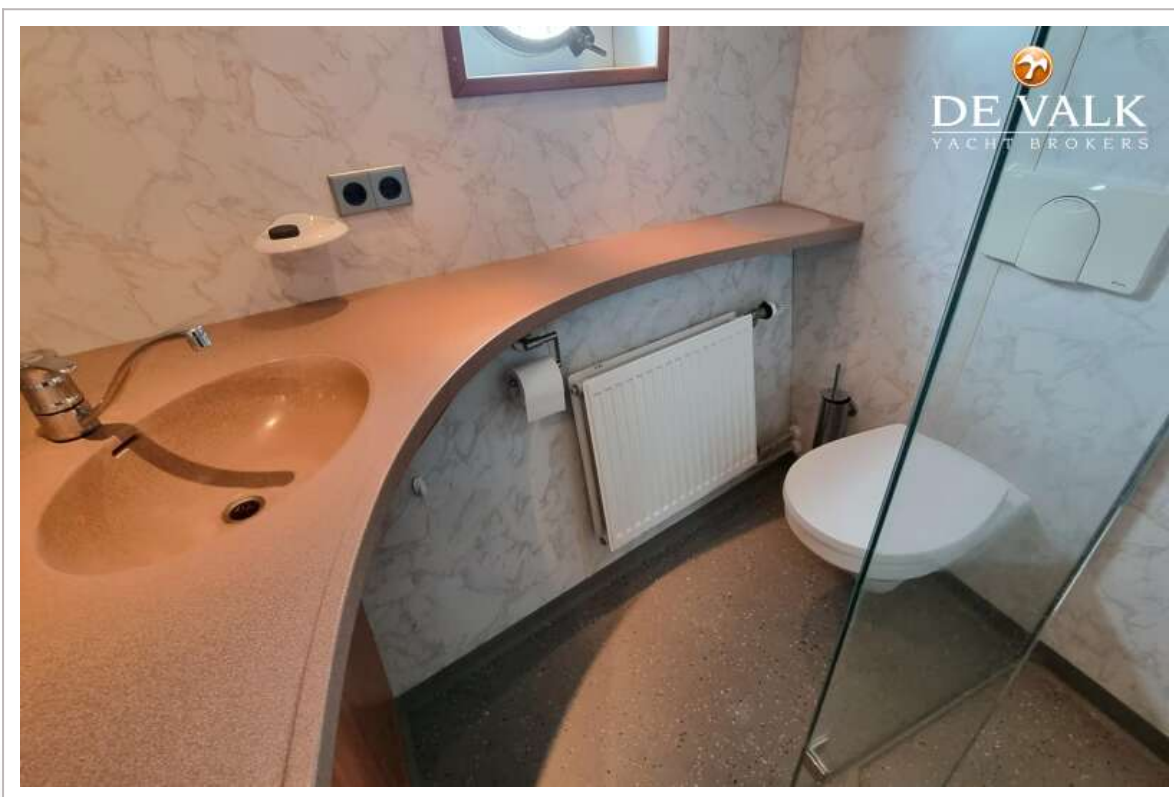




## CUSTOM EXPLORER TRAWLER 1800

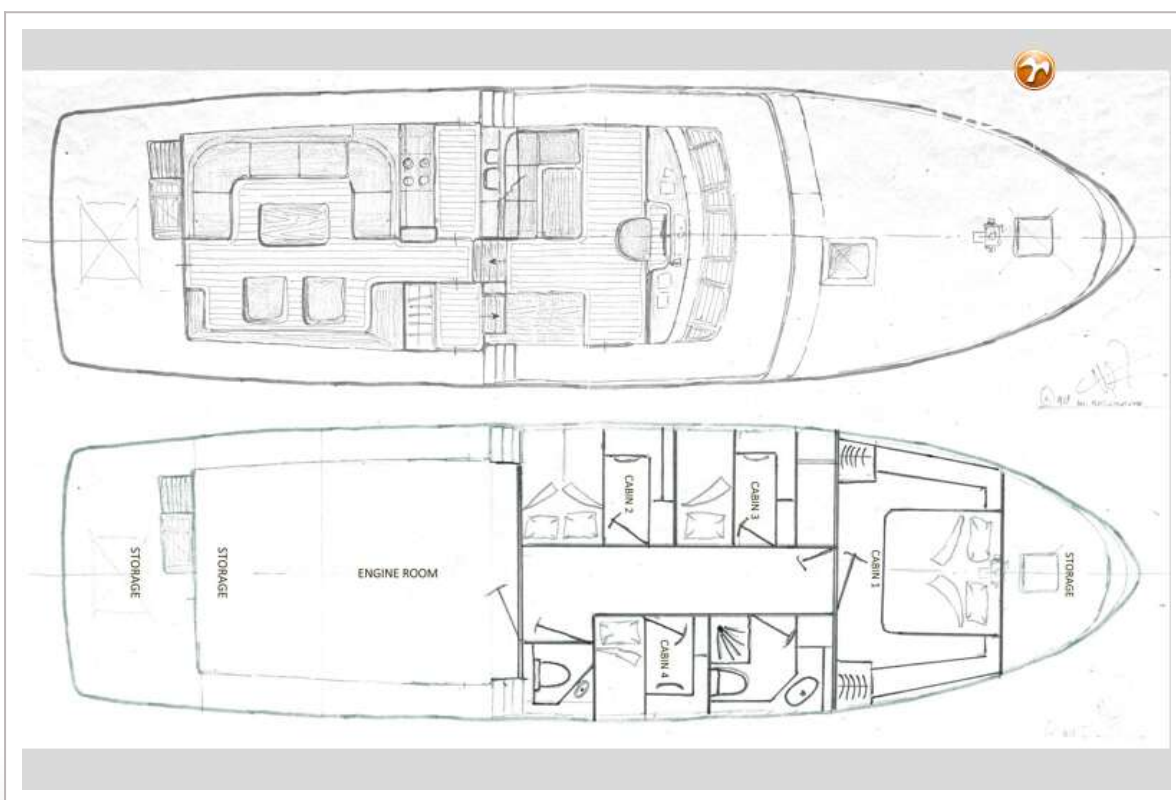
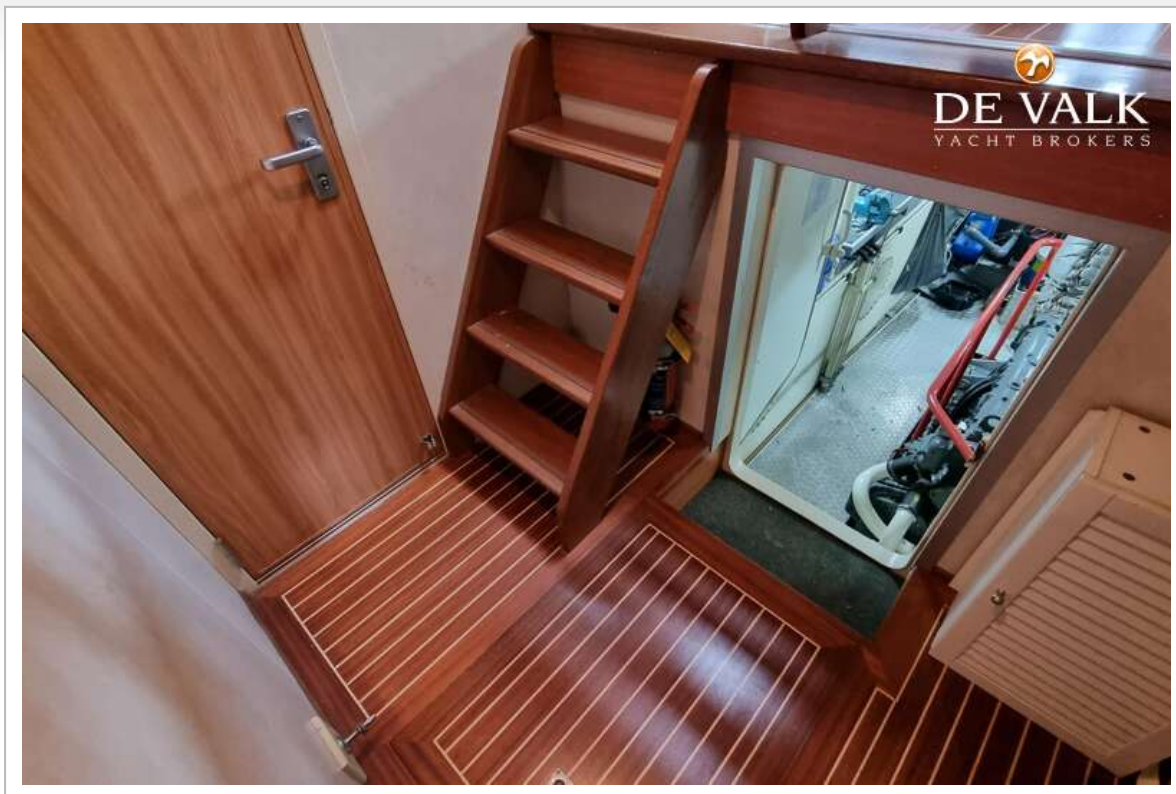


## CUSTOM EXPLORER TRAWLER 1800





# CUSTOM EXPLORER TRAWLER 1800

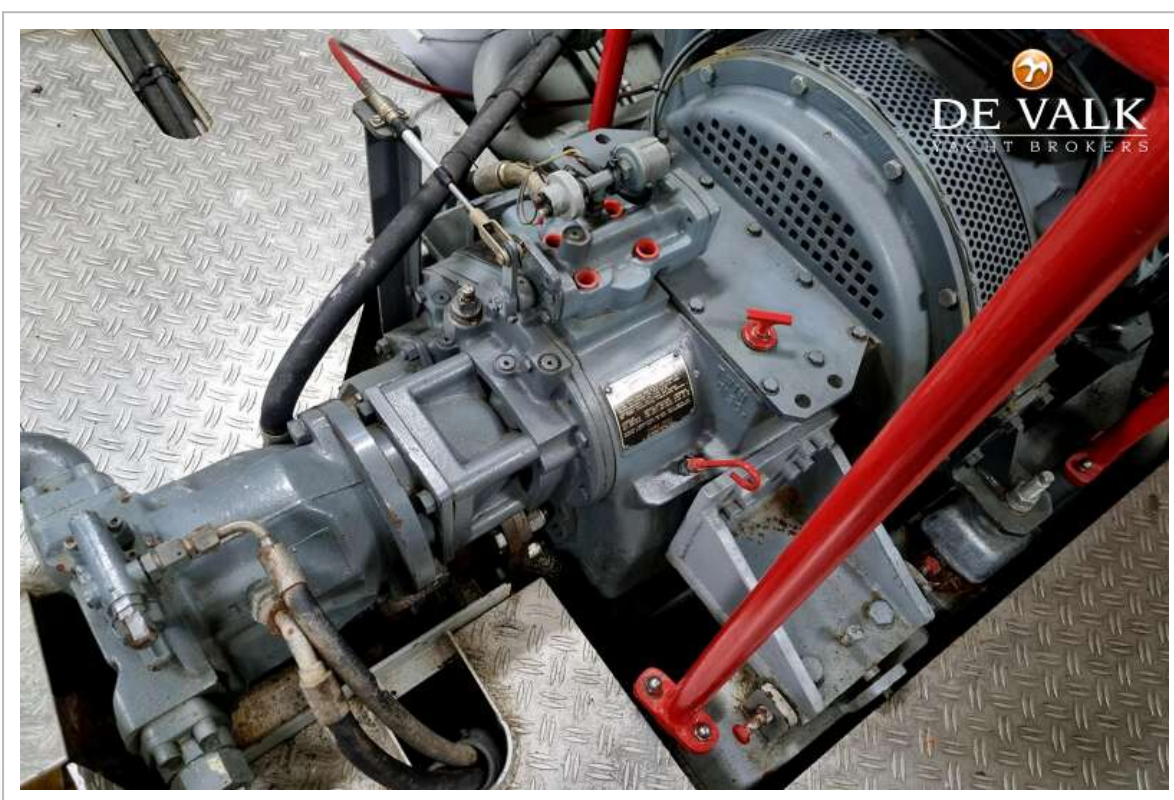
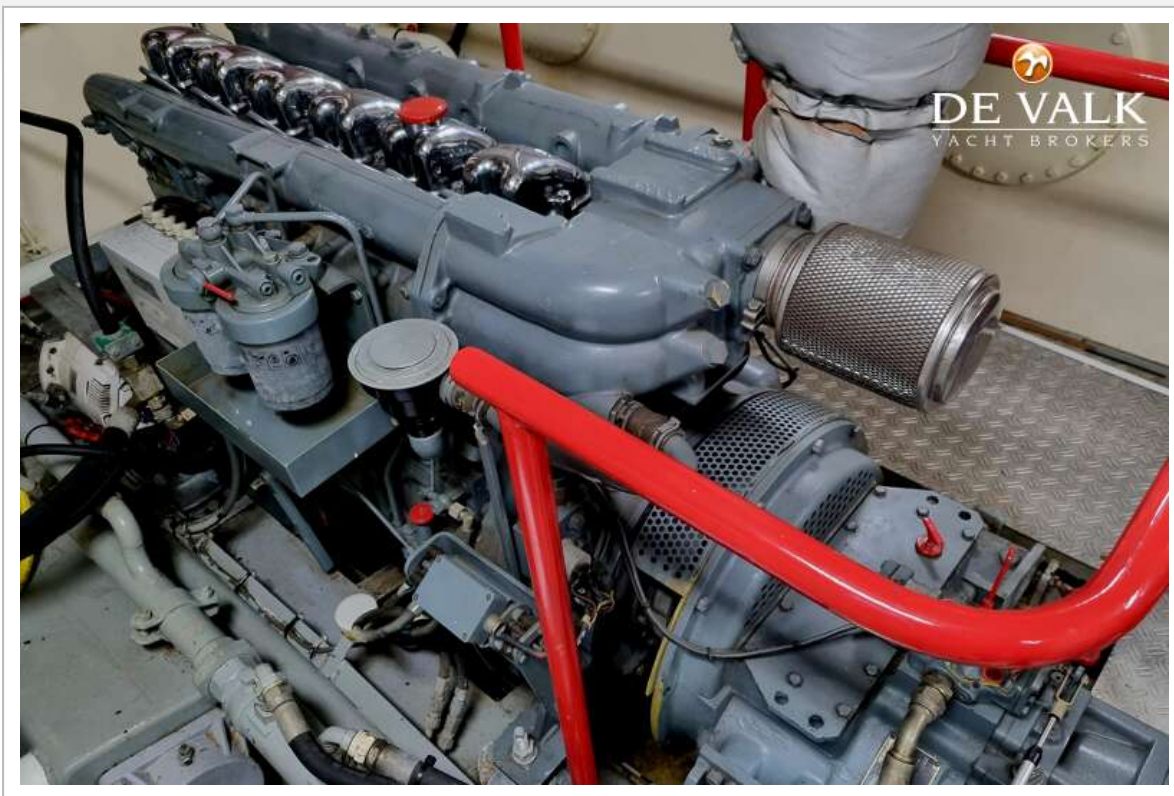


# CUSTOM EXPLORER TRAWLER 1800





# CUSTOM EXPLORER TRAWLER 1800



## CUSTOM EXPLORER TRAWLER 1800

