



DE VALK  
YACHT BROKERS



WYBOATS VLET 10.50 OK



DE VALK  
YACHT BROKERS

# WYBOATS VLET 10.50 OK

## BROKER'S COMMENTS

A nice example of well kept Wyboat 1050 build by Smelne with 2 separate cabins that sleeps 4 people. The owner did lots of renewals in 2021 wich makes the boat ready to go. She can be inspected in our salesmarina in Sneek.

*Pieter Bosma*

## SPECIFICATIONS

<b>Dimensions</b>	10.73 x 3.90 x 1.00 (m)	<b>Builder</b>	Smelne Yachtbouw
<b>Built</b>	2006	<b>Cabins</b>	2
<b>Material</b>	Steel	<b>Berths</b>	4
<b>Engine(s)</b>	1 x Volvo Penta D3 diesel	<b>Hp/Kw</b>	110.00 (hp), 80.96 (kw)
<b>Asking price</b>	sold (VAT )	<b>Lying</b>	elsewhere / Not at sales office

## CONTACT

<b>Sales office</b>	De Valk Sneek	<b>Telephone</b>	+31 515 42 80 30
<b>Address</b>	Zwolsmanweg 7 8606 KC Sneek The Netherlands	<b>E-mail</b>	sneek@devalk.nl

## DISCLAIMER

These particulars are given in good faith as supplied but cannot be guaranteed.



# WYBOATS VLET 10.50 OK

## GENERAL

<b>Model</b>	WYBOATS VLET 10.50 OK
<b>Type</b>	motor yacht
<b>LOA (m)</b>	10,73
<b>Beam (m)</b>	3,90
<b>Draft (m)</b>	1,00
<b>Headroom (m)</b>	1,94
<b>Year built</b>	2006
<b>Builder</b>	Smelne Yachtbouw
<b>Country</b>	The Netherlands
<b>CE norm</b>	B
<b>Hull material</b>	steel
<b>Hull colour</b>	blue
<b>Hull shape</b>	multi hard chine
<b>Keel type</b>	long keel
<b>Superstructure material</b>	steel
<b>Rubbing strake</b>	fender rope
<b>Deck material</b>	steel
<b>Deck finish</b>	non-skid paint
<b>Superstructure deck finish</b>	paint
<b>Cockpit deck finish</b>	teak
<b>Dorades</b>	yes
<b>Window frame</b>	aluminium
<b>Window material</b>	tempered glass
<b>Deckhatch</b>	3x
<b>Portholes</b>	aluminium
<b>Insulation</b>	rockwool
<b>Mast can be lowered</b>	manual
<b>Fuel tank (litre)</b>	steel 500 ltr
<b>Level indicator (fuel tank)</b>	VDO
<b>Freshwater tank (litre)</b>	stainless steel 2x 155 Ltr



Level indicator (freshwater)	VDO
Blackwater tank (litre)	polyethylene 130 Ltr
Level indicator (blackwater)	VDO
Blackwater tank extraction	deck extraction + pump
Wheel steering	hydraulic
Inside helm position	yes
More info on paintwork	hull painted 2021

## ACCOMMODATION

Cabins	2
Berths	4
Interior	teak
Floor	vinyl
Open cockpit	yes
Deck saloon	yes
Headroom saloon (m)	1.96 m
Heating	diesel ducted hot air Eberspacher Airtronic
Opening door to cockpit	Teak 4x
Galley	yes
Countertop	plastic
Sink	stainless steel
Cooker	calor gas 2 burner
Fridge	Isotherm 85 Ltr
Wine cooler	Isotherm 50 Ltr
Hot water system	220V + engine Boiler
Water pressure system	electrical
Owners cabin	French bed Matras 2021
Bed length (m)	2.00 m.
Wardrobe	shelves
Bathroom	shared
Toilet	shared



<b>Toilet system</b>	electric Tecma 2021
<b>Wash basin</b>	in the bathroom
<b>Shower</b>	separate
<b>Guest cabin 1</b>	bunk bed
<b>Bed length (m)</b>	2.00 mtr
<b>Wardrobe</b>	hanging and shelves
<b>Bathroom</b>	shared
<b>Extra info</b>	upholstery renewed 2021

## MACHINERY

<b>No of engines</b>	1
<b>Make</b>	Volvo Penta
<b>Type</b>	D3
<b>HP</b>	110
<b>kW</b>	80.96
<b>Fuel</b>	diesel
<b>Year installed</b>	2006
<b>Engine hours</b>	995
<b>Engine cooling system</b>	freshwater heat exchanger
<b>Drive</b>	shaft
<b>Shaft seal</b>	Volvo Seal 2021
<b>Engine controls</b>	bowden cable
<b>Gearbox</b>	hydraulic Volvo HS25AB 1.93:1
<b>Bowthruster</b>	electric With remote controle
<b>Sternthruster</b>	electric
<b>Exhaust</b>	watercooled
<b>Thrust bearing</b>	yes
<b>Propeller type</b>	fixed
<b>Propeller blades</b>	4
<b>Propeller shaft material</b>	stainless steel
<b>Shaft lubrication</b>	water



Electric bilge pump	yes
Electrical installation	yes
Batteries	yes
Start battery	105 Ah 2021
Service battery	2x 180 Ah 2021
Battery charger/inverter	Victron Phoenix Multi 12-2500-120
Solar panel	190 W 2021
Diode battery combiners	yes
Shorepower	with cable

## NAVIGATION

Electric compass	Passport
Depth sounder	Raymarine ST40
VHF	Mtech MT500
Rudder angle indicator	VDO
Plotter/GPS	Garmin GPSmap 512
Navigation lights	yes

## EQUIPMENT

Cockpit cover	2021
Cockpit cushions	2021
Cockpit table	yes
Bathing platform	yes
Boarding ladder	stainless steel
Deck shower	yes
Anchor	Pool
Anchor chain	yes
Windlass	manual
Sea railing	yes
Grab rail (superstructure)	yes
Wiper	yes



# WYBOATS VLET 10.50 OK

<b>Horn</b>	yes
<b>Fenders</b>	yes
<b>Mooring lines</b>	yes
<b>TV</b>	yes
<b>Radio</b>	Sony DSX A510BD
<b>Extinguisher in engine room</b>	Ajax
<b>Extra info</b>	remote controled Gas system

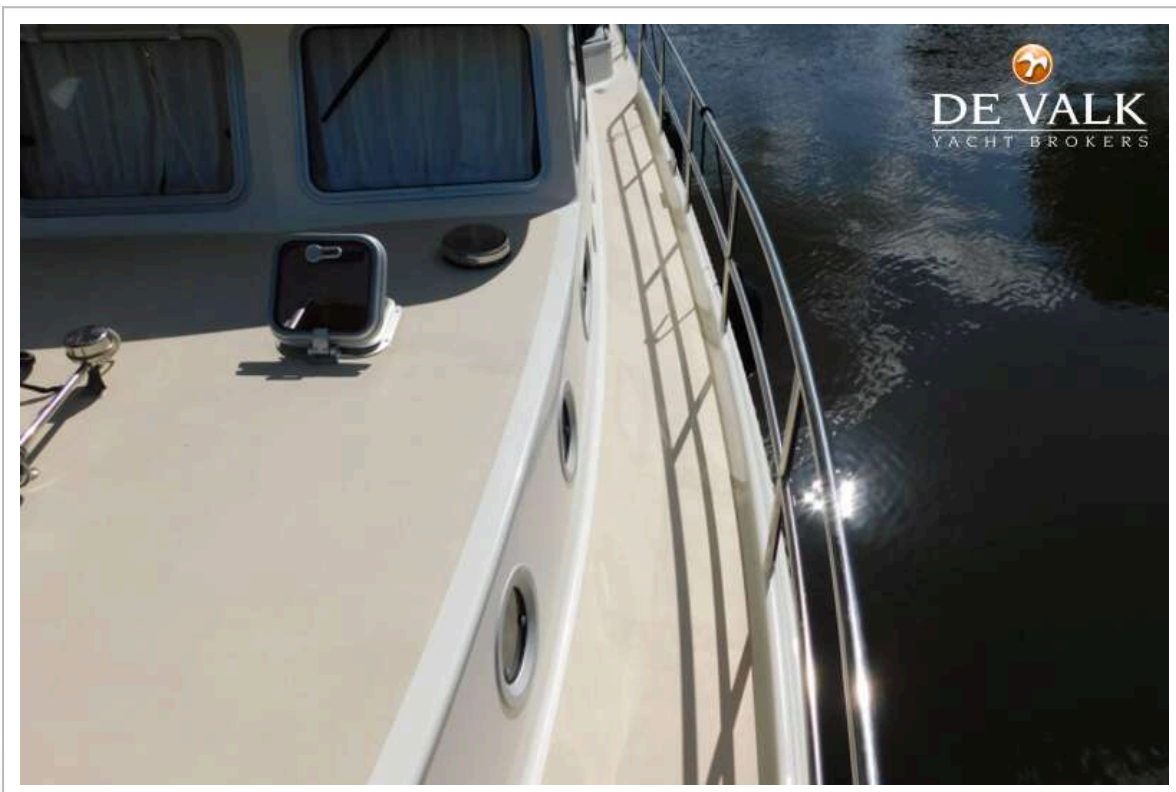








# WYBOATS VLET 10.50 OK

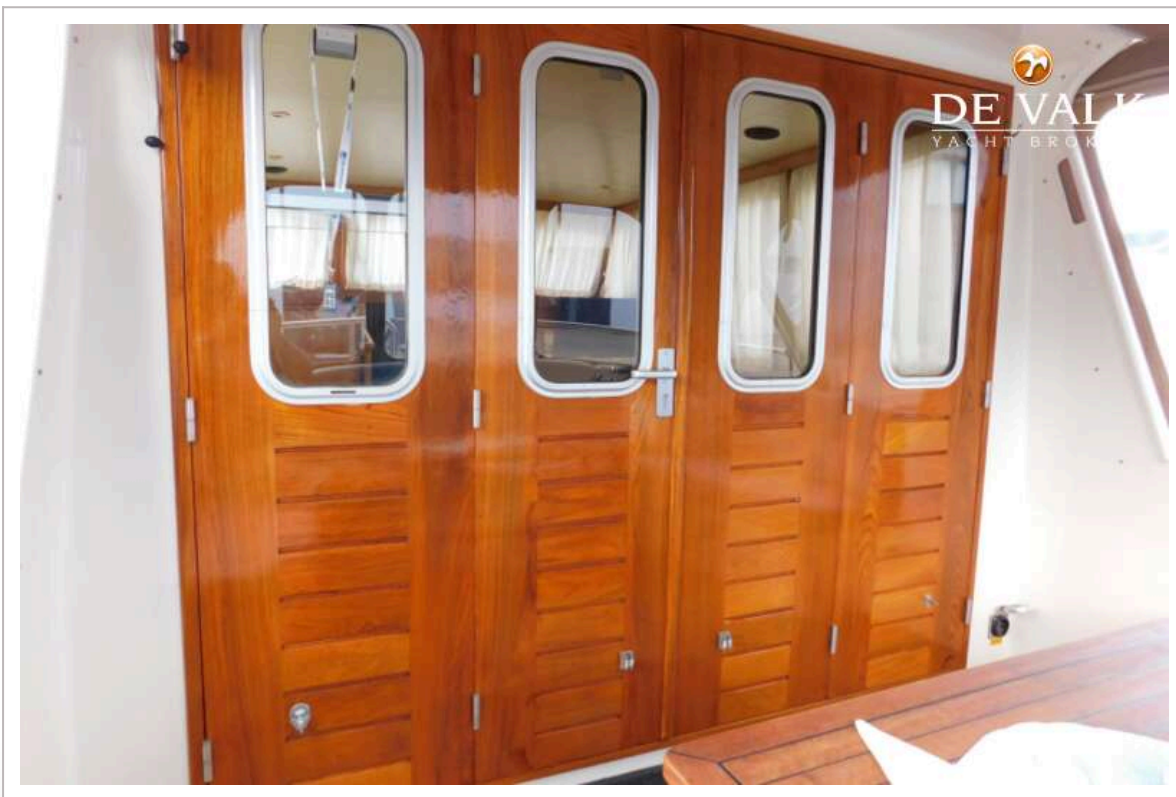


# WYBOATS VLET 10.50 OK





# WYBOATS VLET 10.50 OK



# WYBOATS VLET 10.50 OK





# WYBOATS VLET 10.50 OK



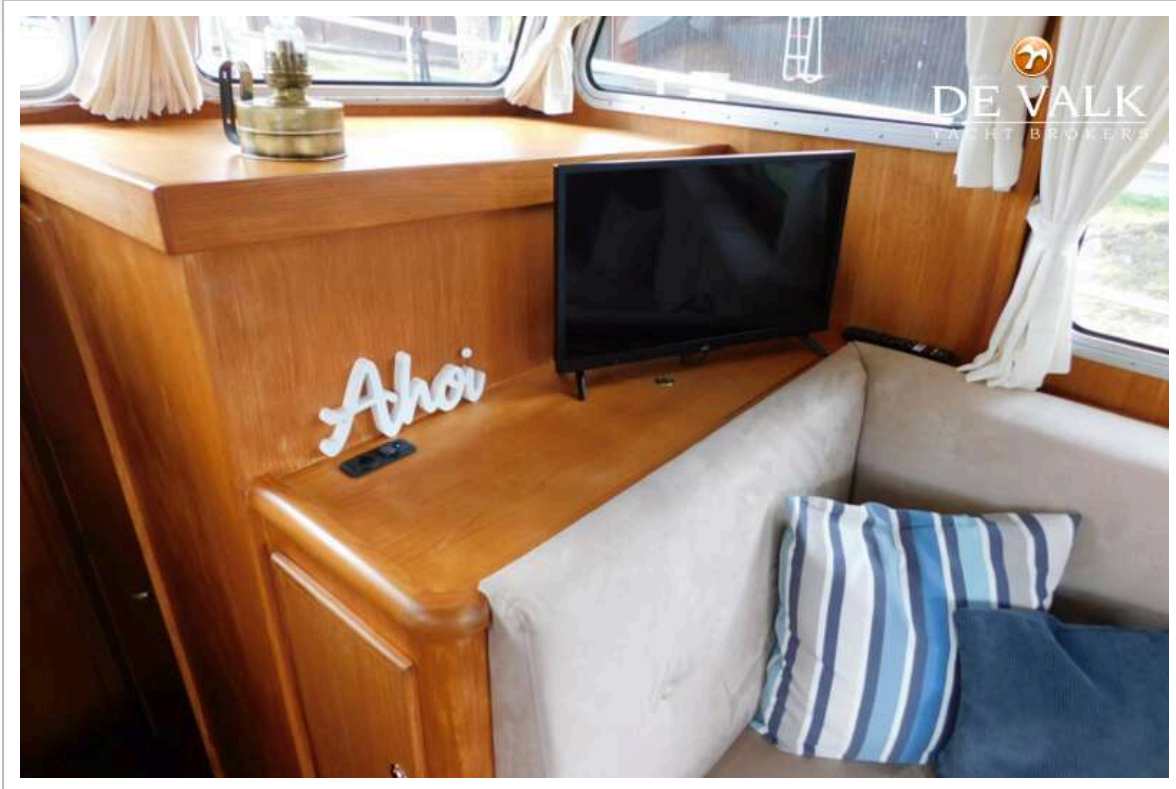


# WYBOATS VLET 10.50 OK



# WYBOATS VLET 10.50 OK

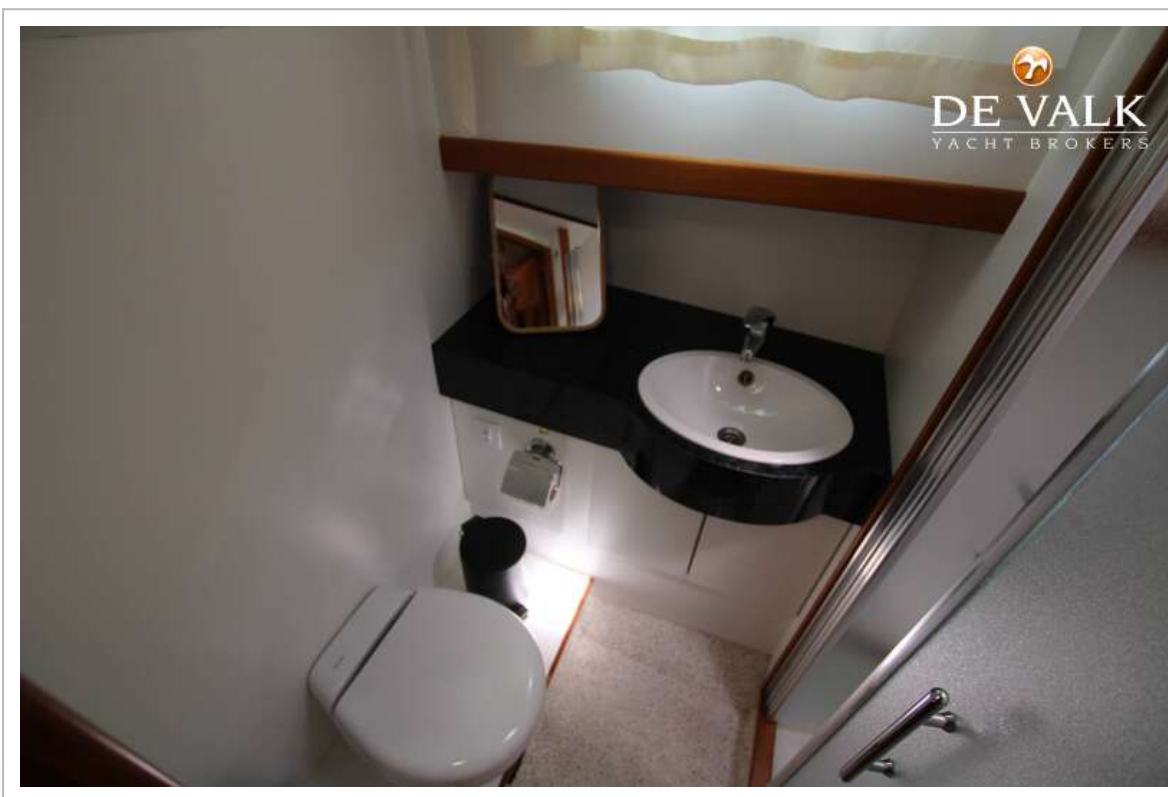
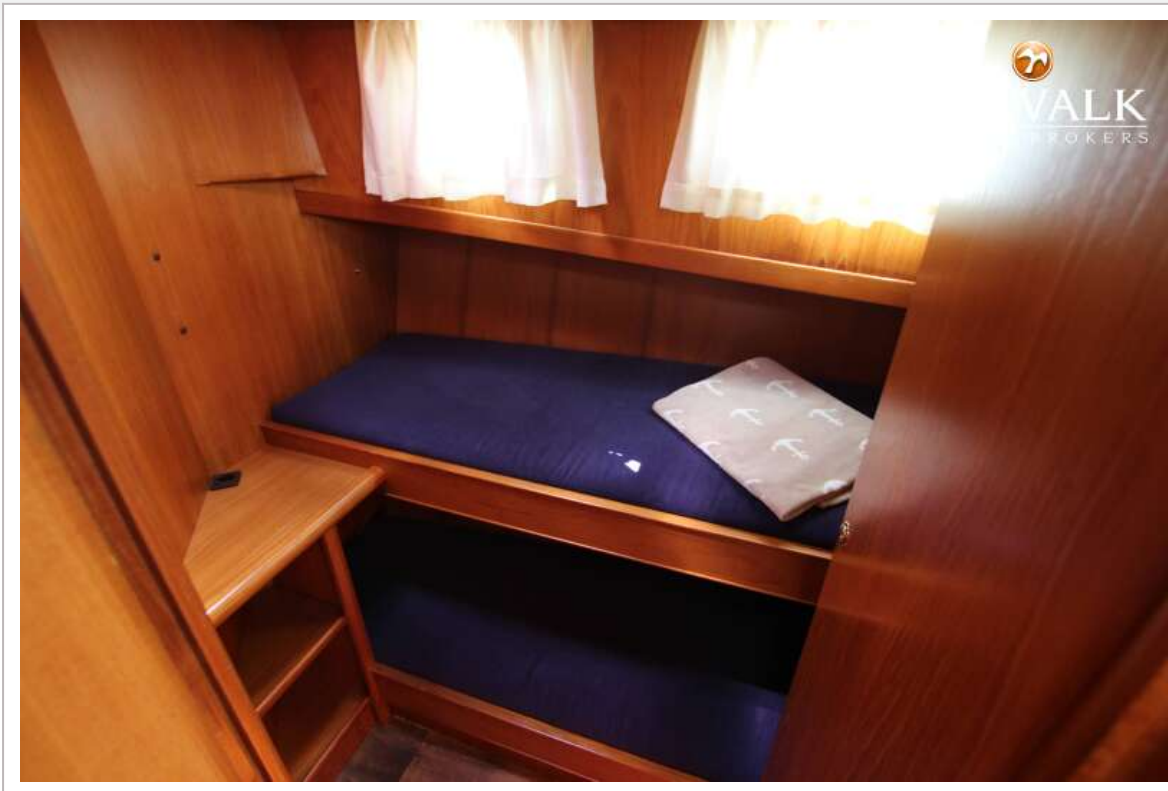


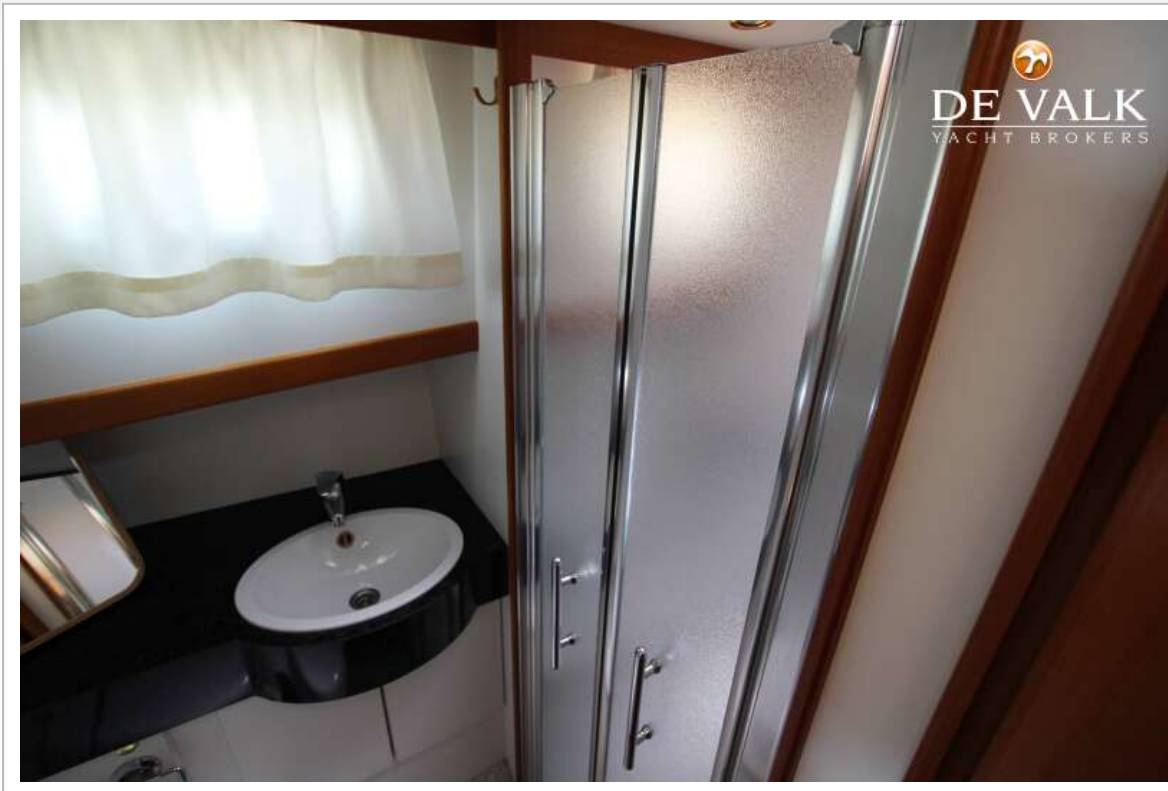


# WYBOATS VLET 10.50 OK









# WYBOATS VLET 10.50 OK

