



DE VALK  
YACHT BROKERS



## BAVARIA 40 CRUISER



DE VALK  
YACHT BROKERS

# BAVARIA 40 CRUISER

## BROKER'S COMMENTS

This beautiful well maintained Bavaria 40 Cruiser offers you a lot of comfort, accommodation and of course the necessary sailing performance. She is fully equipped with two steering wheels, modern navigation and has 3 cabins. Below deck you will find a contemporary interior with lots of light, this whole makes the yacht suitable for both a short and long stay on board. This Bavaria 40 Cruiser is ready for departure with the new owner!

*Johan Nooitgedagt*

## SPECIFICATIONS

<b>Dimensions</b>	12.35 x 3.99 x 1.87 (m)	<b>Builder</b>	BAVARIA YACHTS
<b>Built</b>	2010	<b>Cabins</b>	3
<b>Material</b>	GRP	<b>Berths</b>	7
<b>Engine(s)</b>	1 x Volvo penta D2 - 40 diesel	<b>Hp/Kw</b>	40.00 (hp), 29.44 (kw)
<b>Asking price</b>	sold (VAT )	<b>Lying</b>	contact Hindeloopen

## CONTACT

<b>Sales office</b>	De Valk Hindeloopen B.V.	<b>Telephone</b>	+31 514 52 40 00
<b>Address</b>	Oosterstrand 1 8713 JS Hindeloopen NL	<b>E-mail</b>	hindeloopen@devalk.nl

## DISCLAIMER

These particulars are given in good faith as supplied but cannot be guaranteed.



# BAVARIA 40 CRUISER

## GENERAL

Model	BAVARIA 40 CRUISER
Type	sailing yacht
LOA (m)	12,35
LWL (m)	10,77
Beam (m)	3,99
Draft (m)	1,87
Headroom (m)	18,00
Year built	2010
Builder	BAVARIA YACHTS
Country	Germany
Displacement (t)	9
Ballast (tonnes)	cast iron
CE norm	A
Hull material	GRP
Hull colour	off-white
Hull shape	round-bilged
Keel type	yes
Superstructure material	GRP
Rubbing strake	aluminum
Deck material	GRP
Deck finish	non-skid moulded in
Superstructure deck finish	non-skid moulded in
Cockpit deck finish	teak
Antifouling (year)	2021
Window frame	aluminium
Deckhatch	yes
Portholes	aluminium
Fuel tank (litre)	GRP 210L
Level indicator (fuel tank)	yes
Freshwater tank (litre)	310L



# BAVARIA 40 CRUISER

Level indicator (freshwater)	yes
Blackwater tank (litre)	GRP 2x 100L
Level indicator (blackwater)	yes
Blackwater tank extraction	deck extraction + uw line
Wheel steering	chain steering 2x
Outside helm position	chain steering
Emergency tiller	yes

## ACCOMMODATION

Cabins	3
Berths	7
Crew cabin	2
Interior	teak
Floor	woodprint
Open cockpit	yes
Saloon	yes
Headroom saloon (m)	2.00m
Heating	diesel ducted hot air Webasto
Chart table	yes
Galley	yes
Countertop	plastic
Sink	stainless steel
Cooker	calor gas
Oven	yes
Microwave	yes
Fridge	yes
Hot water system	220V + engine
Water pressure system	electrical
Owners cabin	double bed
Bed length (m)	2m
Wardrobe	hanging/drawers/shelves



# BAVARIA 40 CRUISER

Bathroom	en suite
Toilet	en suite Jabsco
Toilet system	manual
Wash basin	in the bathroom
Shower	en suite
Guest cabin 1	double bed
Bed length (m)	2m
Wardrobe	hanging and shelves
Bathroom	shared
Toilet	shared Jabsco
Toilet system	manual
Wash basin	in the bathroom
Guest cabin 2	double bed
Bed length (m)	2m
Wardrobe	hanging and shelves
Bathroom	shared
Toilet	shared
Toilet system	manual
Wash basin	in the bathroom
Shower	yes

## MACHINERY

No of engines	1
Make	Volvo penta
Type	D2 - 40
HP	40
kW	29,44
Fuel	diesel
Maximum speed (kn)	7
Cruising speed (kn)	6
Consumption (l/hr)	3,5



# BAVARIA 40 CRUISER

Engine hours	1612
Engine cooling system	seawater
Drive	sail-drive
Engine controls	mechanical
Bowthruster	electric
Gearbox	mechanical
Propeller type	folding + reserve vaste uitvoering
Electric bilge pump	yes
Batteries	2
Start battery	1
Bowthruster battery	yes
Battery charger	yes
Shorepower	with cable

## NAVIGATION

Compass	2x Plastimo
Electric compass	yes
Depth sounder/log	Raymarine ST60 Tridata
Windset	RaymarineST60 Wind
VHF	Raymarine
VHF handheld	yes
Autopilot	Raymarine ST6002
Rudder angle indicator	yes
Plotter/GPS	Raymarine C90
AIS receiver	yes
AIS transponder	yes
Navigation lights	yes

## EQUIPMENT

Fixed windscreen	yes
Sprayhood with grab rail	yes



# BAVARIA 40 CRUISER

Cockpit cover	yes
Winter cover	yes
Cockpit cushions	yes
Cockpit table	yes
Bathing platform	yes
Boarding ladder	stainless steel
Deck shower	yes
Anchor	CQR Plough 22K
Anchor chain	yes
Windlass	electrical Quick
Sea railing	yes
Pulpit	yes
Lifejackets	yes
Safety harness	yes
Lifebuoy	yes
Safety lines on deck	yes
Fenders	yes
TV	SHARP
Radio-cd player	JVC
Cockpit speakers	yes
Speakers in salon	yes
Clock - barometer	3x

## RIGGING

Rigging	sloop
Standing rigging	wire
Brand mast	Seldén
Material mast	aluminium
Spreaders	2x
Mainsail	2010
Stoway mast	yes



# BAVARIA 40 CRUISER

Genoa	2016
Genoa furler	Furlex 300S Selden
Genoa cover	yes
Backstay adjuster	mechanical
Boomvang	mechanical Selden Rodkicker
Primary sheet winch	2x Lemar 40 2x Lewmar 48
Genoa sheetwinches	2x Lewmar 40





# BAVARIA 40 CRUISER



# BAVARIA 40 CRUISER





# BAVARIA 40 CRUISER



# BAVARIA 40 CRUISER





# BAVARIA 40 CRUISER



# BAVARIA 40 CRUISER





# BAVARIA 40 CRUISER



# BAVARIA 40 CRUISER





# BAVARIA 40 CRUISER



# BAVARIA 40 CRUISER





# BAVARIA 40 CRUISER



# BAVARIA 40 CRUISER

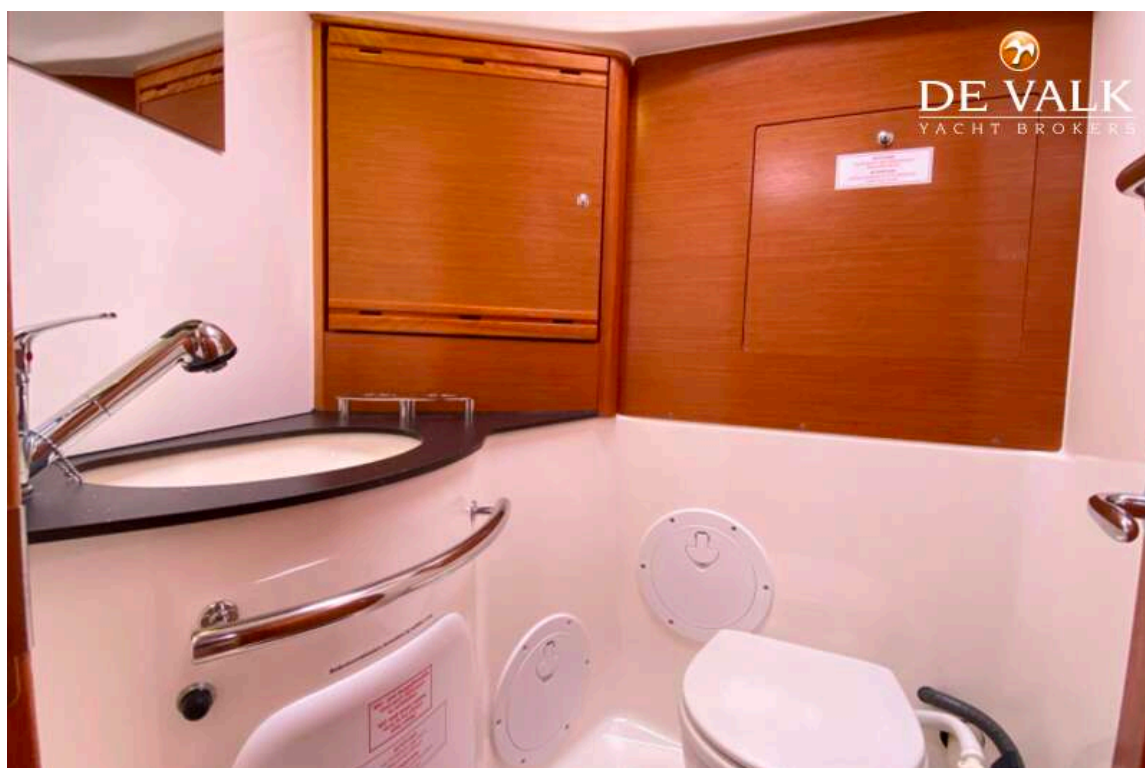




# BAVARIA 40 CRUISER

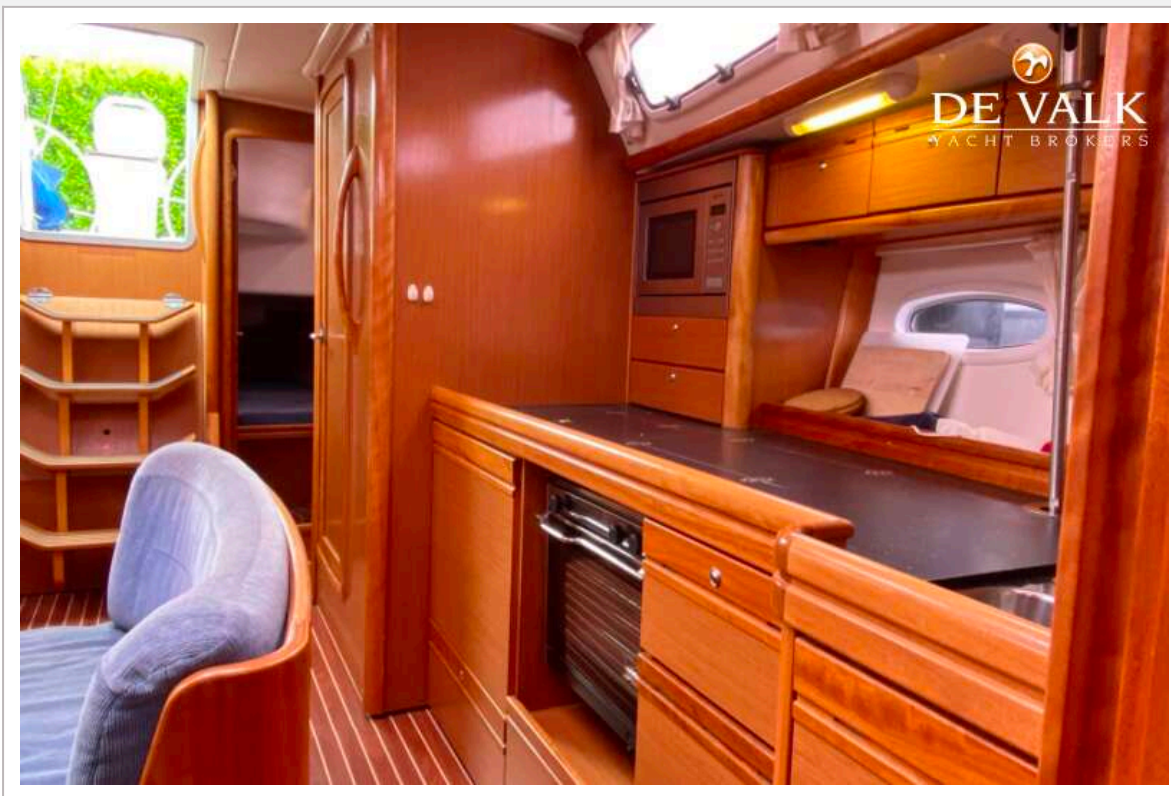


# BAVARIA 40 CRUISER

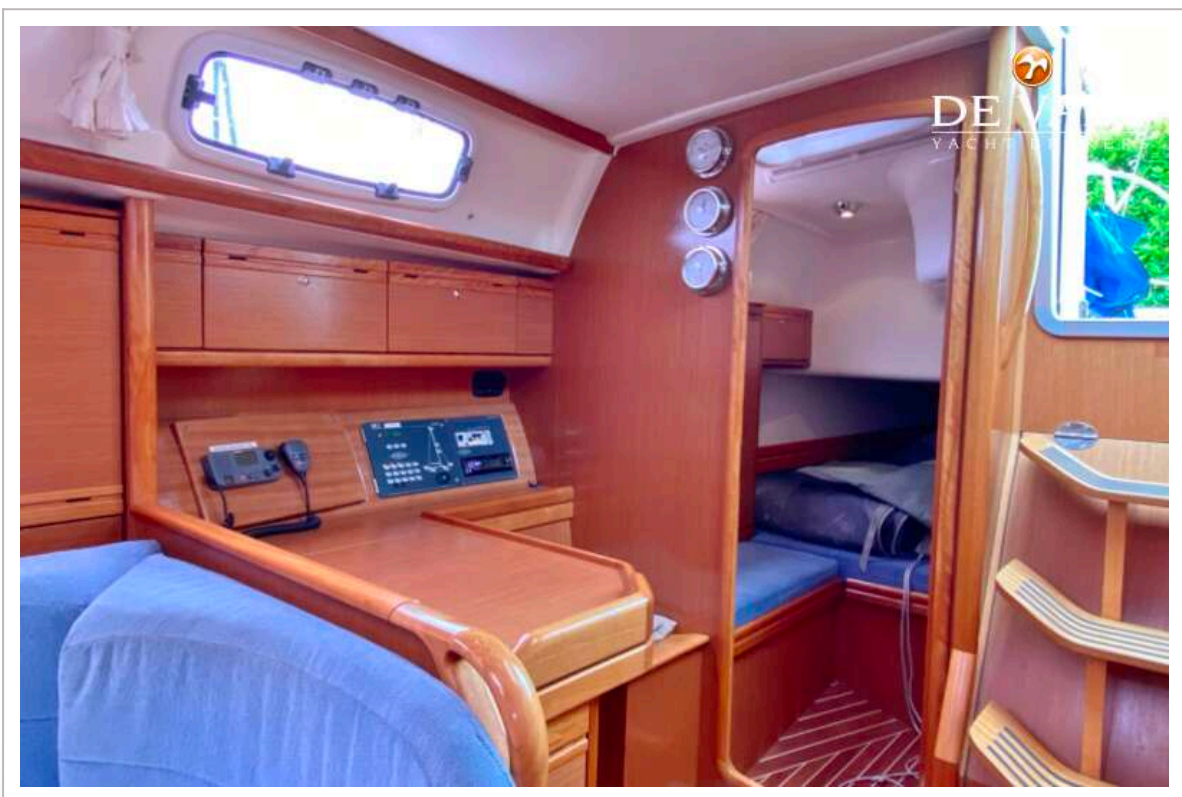
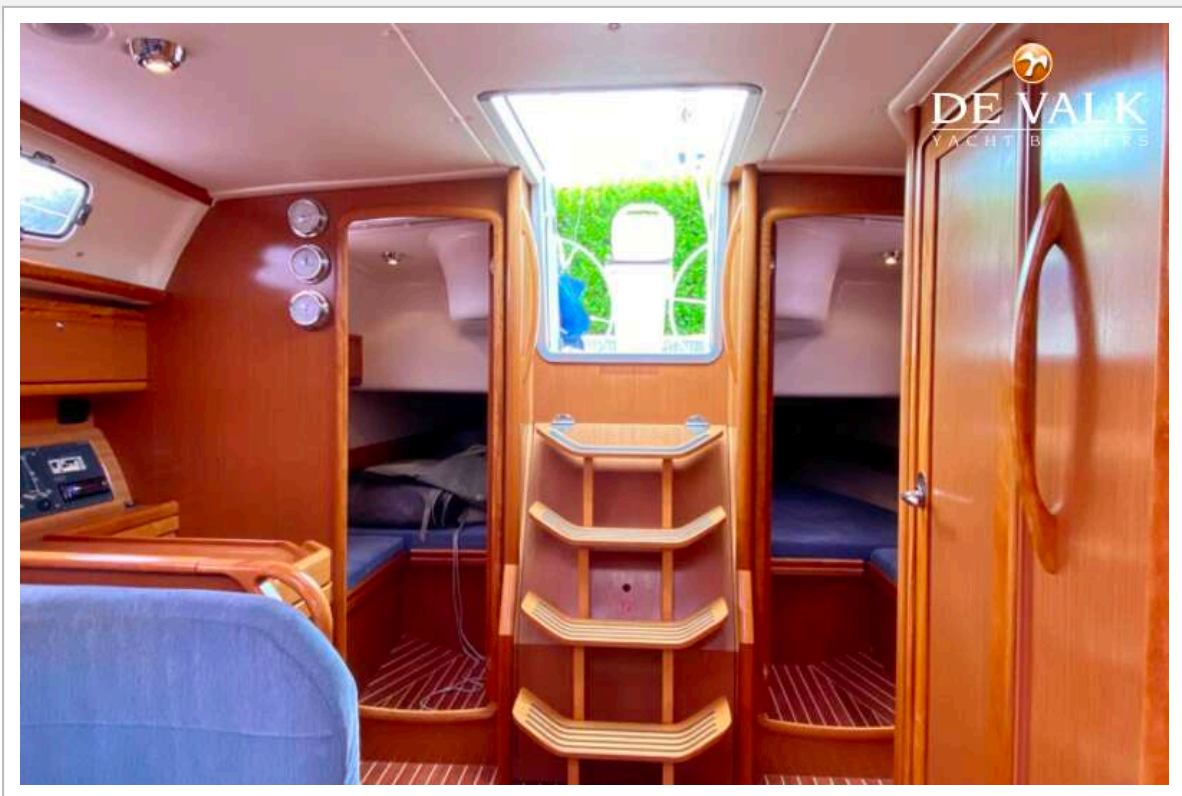




# BAVARIA 40 CRUISER



# BAVARIA 40 CRUISER

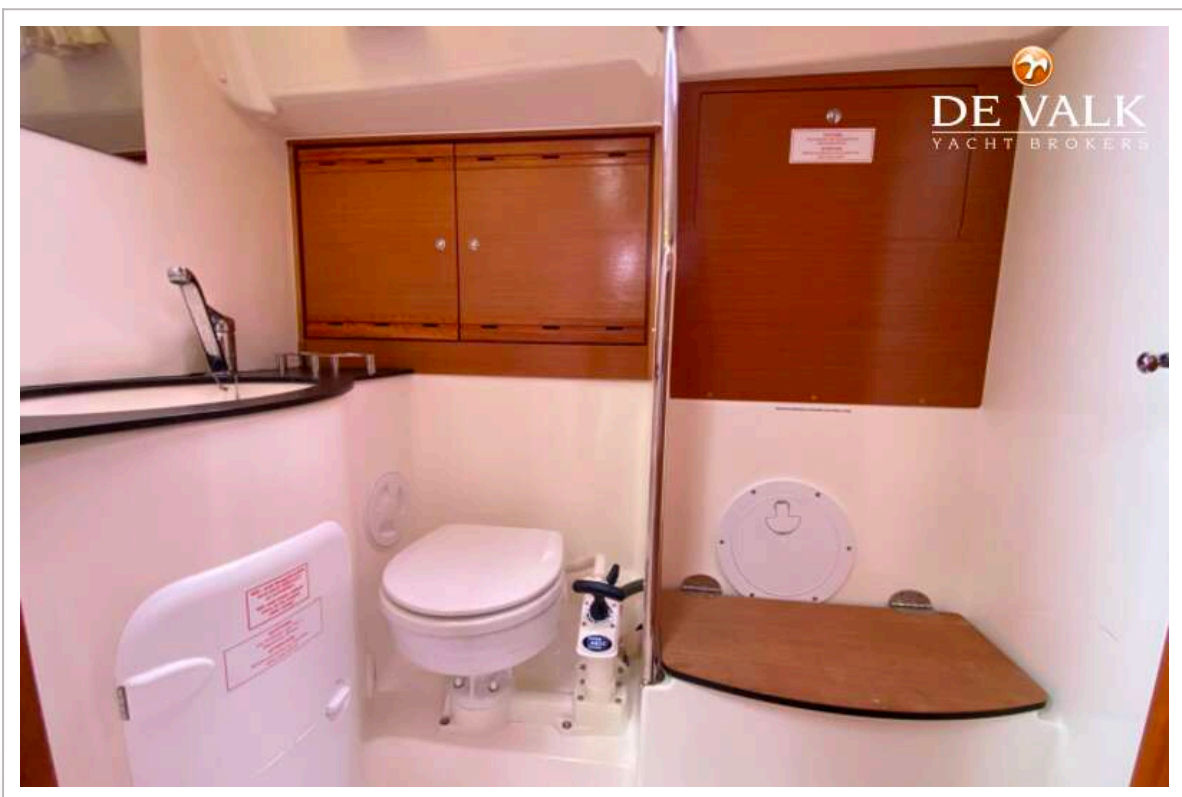




# BAVARIA 40 CRUISER



# BAVARIA 40 CRUISER



# BAVARIA 40 CRUISER

