



## HANSE 430

## BROKER'S COMMENTS

This beautiful Hanse 430 is in perfect condition and comes very well equipped. Spacious and safe cockpit and rigged for short handed sailing with electric winches and self tacking jib, retractable bow thruster and electric windlass. The performance matches the modern design features and a joy at the helm. The popular layout with centerline double berth forward with own bathroom and twin double aft with shared facilities . Ideal for (performance) cruising with family and friends. No charter.

*Henk Sijbranda*

## SPECIFICATIONS

<b>Dimensions</b>	13.15 x 4.18 x 2.25 (m)	<b>Builder</b>	Hanse Yachts AG
<b>Built</b>	2010	<b>Cabins</b>	3
<b>Material</b>	GRP	<b>Berths</b>	6
<b>Engine(s)</b>	1 x Yanmar 4JH5E diesel	<b>Hp/Kw</b>	55.00 (hp), 40.48 (kw)
<b>Asking price</b>	sold (VAT )	<b>Lying</b>	at sales office

## CONTACT

<b>Sales office</b>	De Valk Hindeloopen B.V.	<b>Telephone</b>	+31 514 52 40 00
<b>Address</b>	Oosterstrand 1 8713 JS Hindeloopen NL	<b>E-mail</b>	hindeloopen@devalk.nl

## DISCLAIMER

These particulars are given in good faith as supplied but cannot be guaranteed.



## GENERAL

Model	HANSE 430
Type	sailing yacht
LOA (m)	13,15
Beam (m)	4,18
Draft (m)	2,25
Headroom (m)	1,95
Year built	2010
Builder	Hanse Yachts AG
Country	Germany
Designer	Judel & Vrolijk
Displacement (t)	10,6
Ballast (tonnes)	3,2
CE norm	A
Hull material	GRP
Hull colour	grey
Hull shape	round-bilged
Keel type	fin keel with bulb
Superstructure material	GRP
Rubbing strake	stainless steel
Deck material	GRP
Cockpit deck finish	teak
Antifouling (year)	2022
Window frame	aluminium
Window material	polycarbonate Tempered glass and
Deckhatch	3 opening flush hatches - Lewmar
Fuel tank (litre)	stainless steel 230 ltr.
Level indicator (fuel tank)	yes
Freshwater tank (litre)	polyethylene 325 ltr.
Blackwater tank (litre)	polyethylene 2x
Blackwater tank extraction	deck extraction + uw line



Wheel steering	2x Jefa
Emergency tiller	yes

## ACCOMMODATION

Cabins	3
Berths	6
Interior	mahogany
Open cockpit	yes
Saloon	Yes
Headroom saloon (m)	1,95
Heating	diesel ducted hot air   2x Eberspächer
Navigation center	yes
Chart table	yes
Aft Cabin	Two cabins
Galley	yes
Countertop	corian
Sink	stainless steel   Double
Cooker	calor gas   2 burner
Oven	In cooker
Fridge	Extra large 12 V fridge of approx. 130 l, top and front loader.   Isotherm + freezer compartment
Hot water system	220V + engine
Water pressure system	electrical
Owners cabin	double bed
Bed length (m)	2 mtr.
Wardrobe	hanging/drawers/shelves
Bathroom	en suite
Toilet	Jabsco
Toilet system	yes
Wash basin	yes
Shower	yes



Guest cabin 1	double bed   aft cabin
Bed length (m)	2 mtr.
Wardrobe	hanging and shelves
Guest cabin 2	double bed   aft cabin
Bed length (m)	2 mtr.
Wardrobe	hanging and shelves
Bathroom	shared
Toilet	Jabsco
Toilet system	electric
Wash basin	yes
Shower	yes

## MACHINERY

No of engines	1
Make	Yanmar
Type	4JH5E
HP	55
kW	40,48
Fuel	diesel
Year installed	2010
Maximum speed (kn)	8
Cruising speed (kn)	7
Engine cooling system	freshwater heat exchanger
Drive	sail-drive
Saildrive seal	yes
Engine controls	yes
Gearbox	mechanical
Bowthruster	electric   RCM Marine   retractable
Exhaust	watercooled
Propeller type	folding
Propeller blades	3



Manual bilge pump	yes
Electric bilge pump	yes
Bilge alarm	yes
Electrical installation	12 / 220 Volt
Start battery	1x 70 Ah
Service battery	2x 150Ah   Victron Energy
Bowthruster battery	yes
Battery monitor	Victron Energy
Battery charger/inverter	Sterling Power Pro Charge 12v / 50A Victron Energy MultiPlus 12V   1600Va   70Ah
Shorepower	with cable

## NAVIGATION

Compass	Plastimo Contest 130
Multi control display	Raymarine ST60+ TRIDATA
Windset	Raymarine ST60+ WIND & 2x CH WIND
VHF	Raymarine RAY240E
Autopilot	Raymarine ST6002 + SmartController
Radar	Raymarine
Radar/GPS/plotter	Raymarine C120 W
AIS receiver	yes
Navigation lights	yes

## EQUIPMENT

Sprayhood with grab rail	yes
Cockpit cover	yes
Winter cover	yes
Cockpit table	yes
Boarding ladder	stainless steel
Deck shower	yes
Anchor	Delta



Anchor chain	Stainless steel
Windlass	electrical   Lewmar
Outboard support	yes
Sea railing	wire
Grab rail (superstructure)	stainless steel
Pushpit	yes
Pulpit	yes
Fenders	yes
Mooring lines	yes
Radio-cd player	Clarion
Cockpit speakers	yes
Speakers in salon	yes
Clock - barometer	yes
Fire extinguisher	yes

## RIGGING

Rigging	fractional
Standing rigging	wire
Brand mast	Seldén
Material mast	aluminium
Spreaders	2 pair
Mainsail	North sails
Mainsail cover	With main-drop bag
Battcars	yes
Fully battened mainsail	yes
Jib	North sails
Genoa furler	Under deck furling system
Self tacking jib installation	yes
Reefing System	quick-one-line-reefing   3x
Backstay adjuster	hydraulic
Boomvang	gasspring



**Primary sheet winch**

4x Lewmar 46 | one electric

**Halyard winches**

2x Lewmar 46 | one electric

**Winchcovers**

Yes





# HANSE 430



# HANSE 430





# HANSE 430

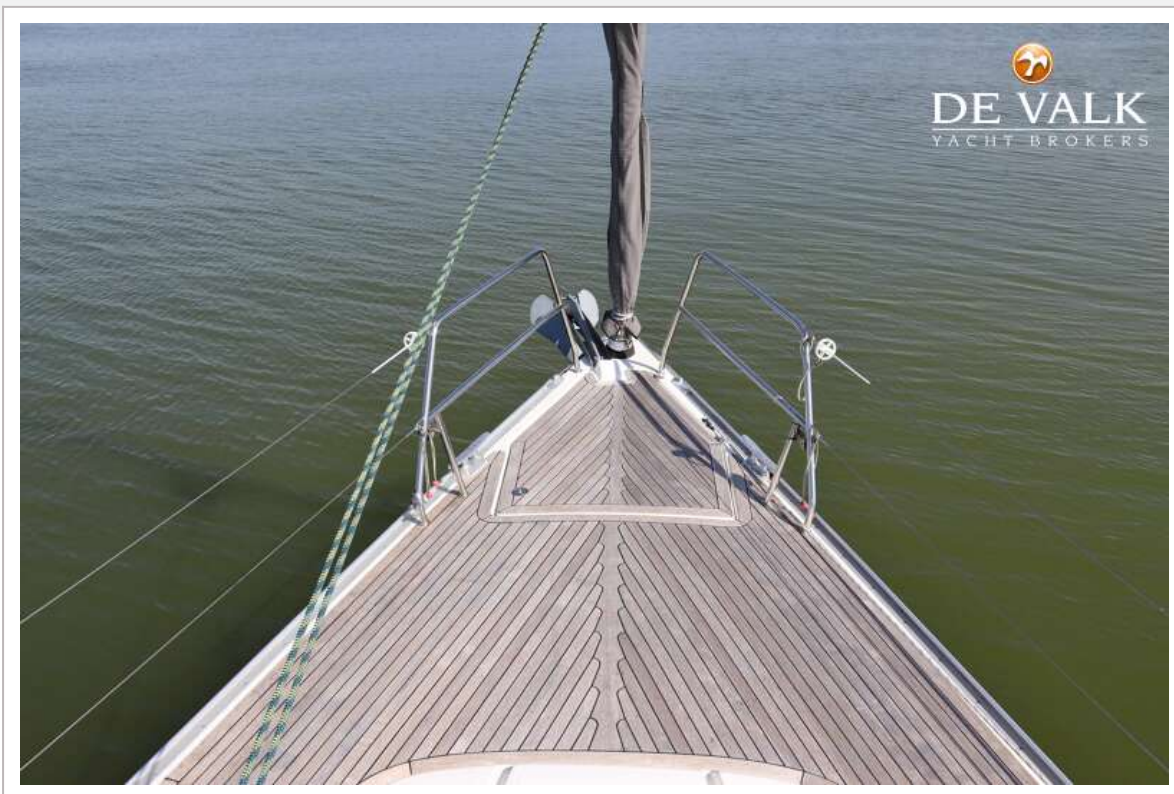


# HANSE 430





# HANSE 430



# HANSE 430





# HANSE 430

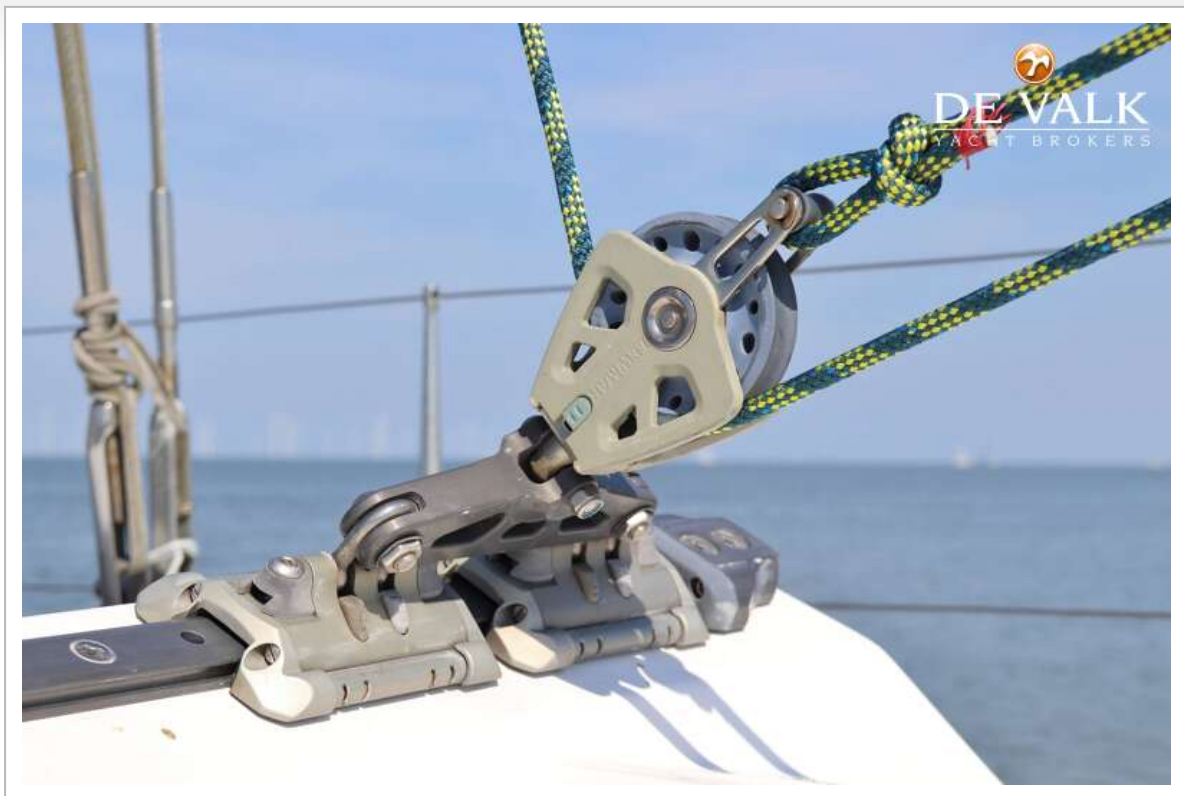


# HANSE 430





# HANSE 430



# HANSE 430



# HANSE 430





# HANSE 430

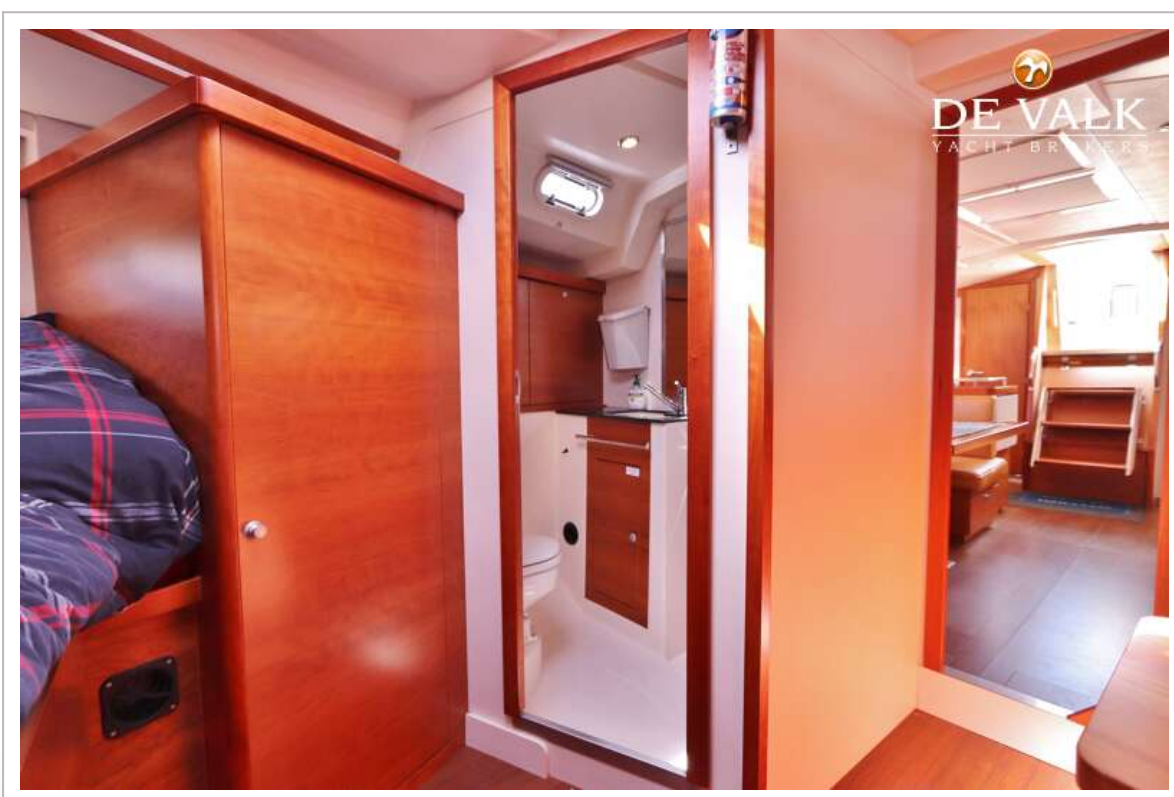
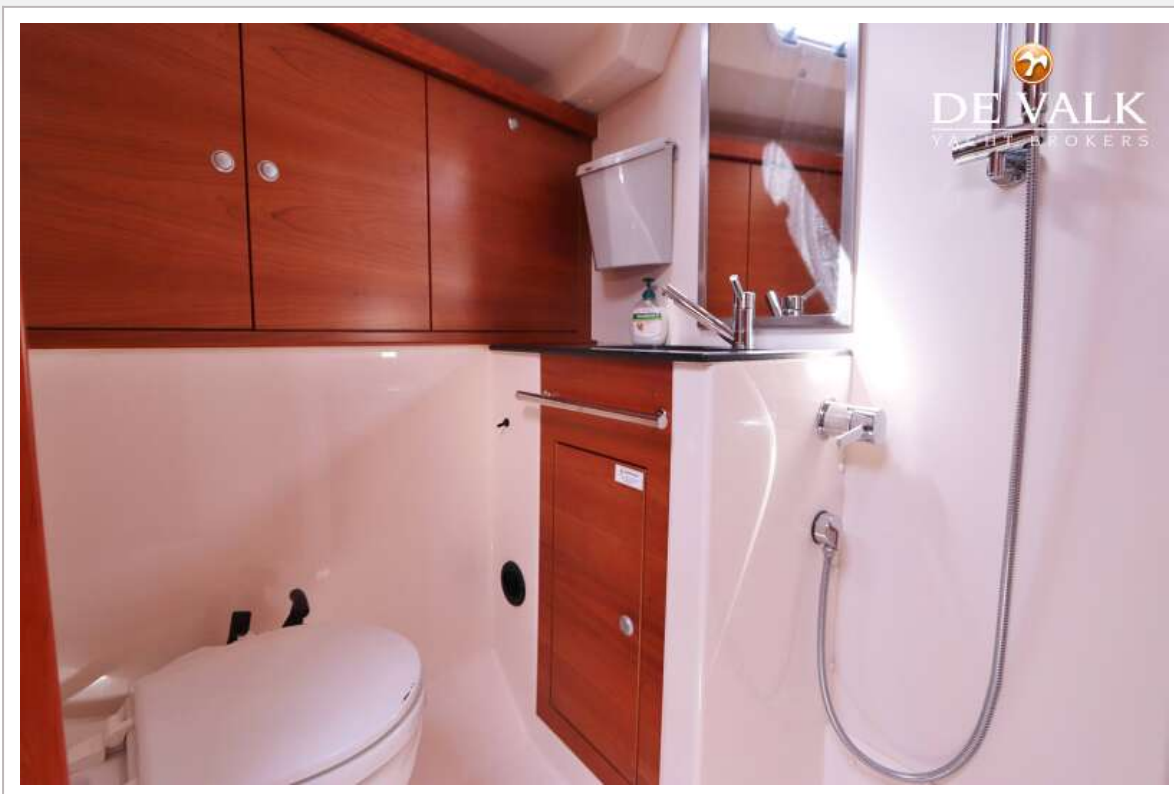


# HANSE 430

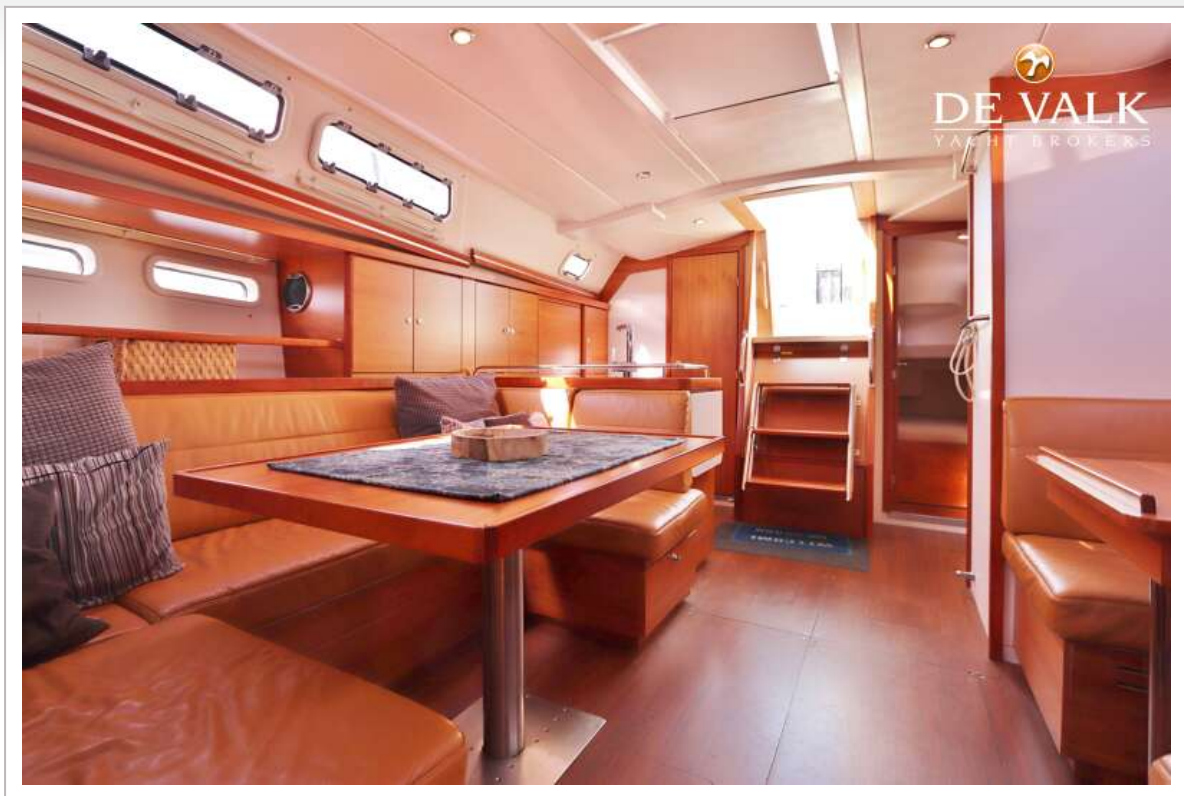




# HANSE 430

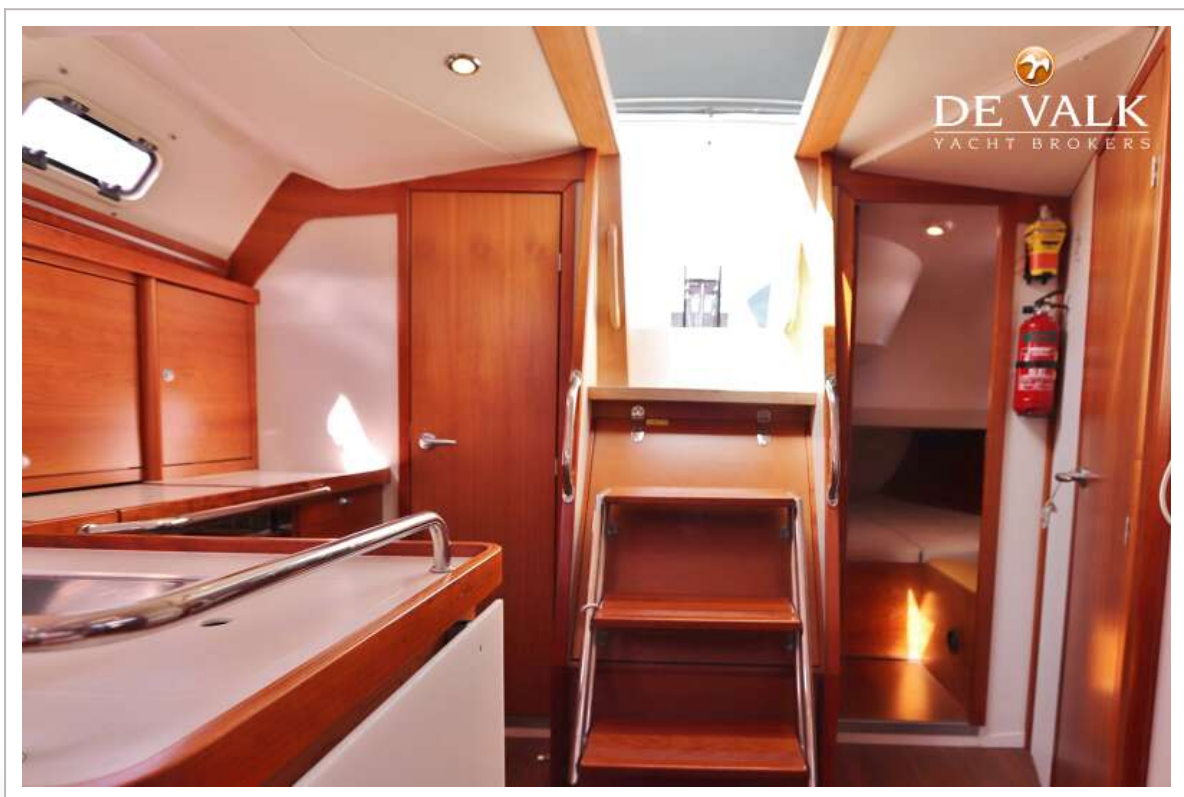


# HANSE 430



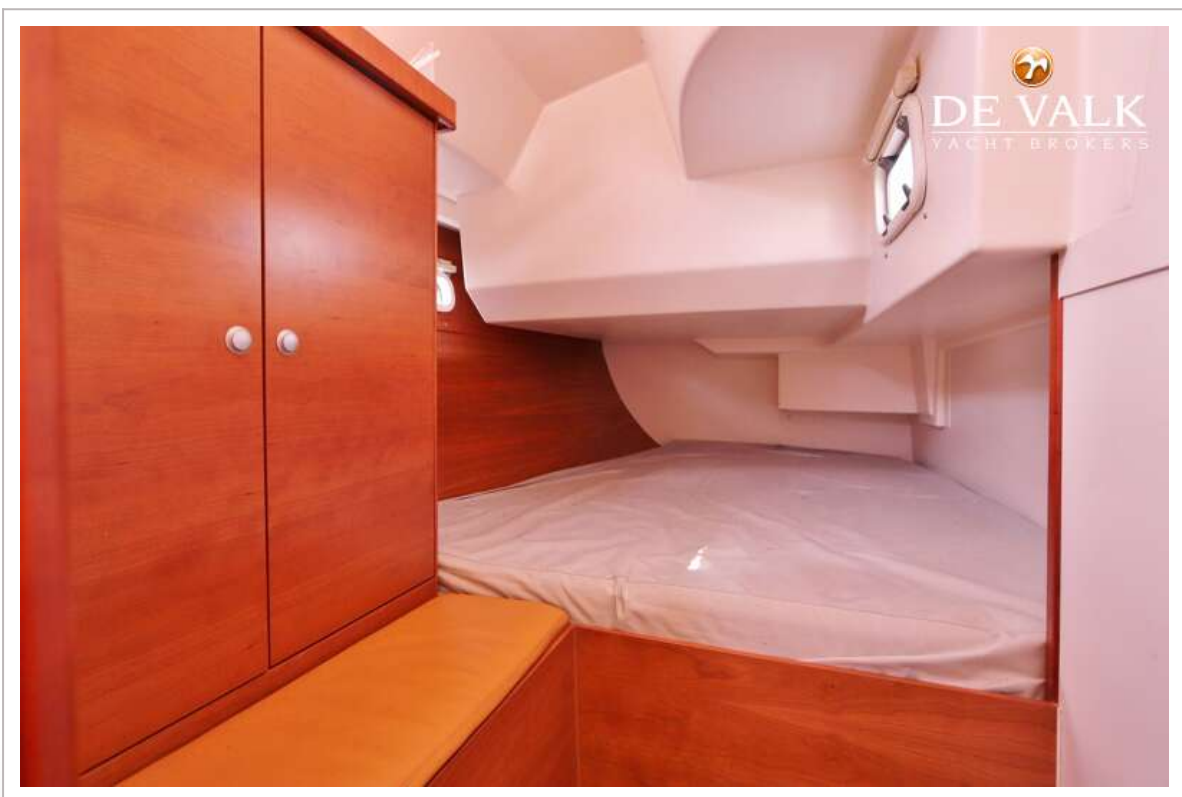
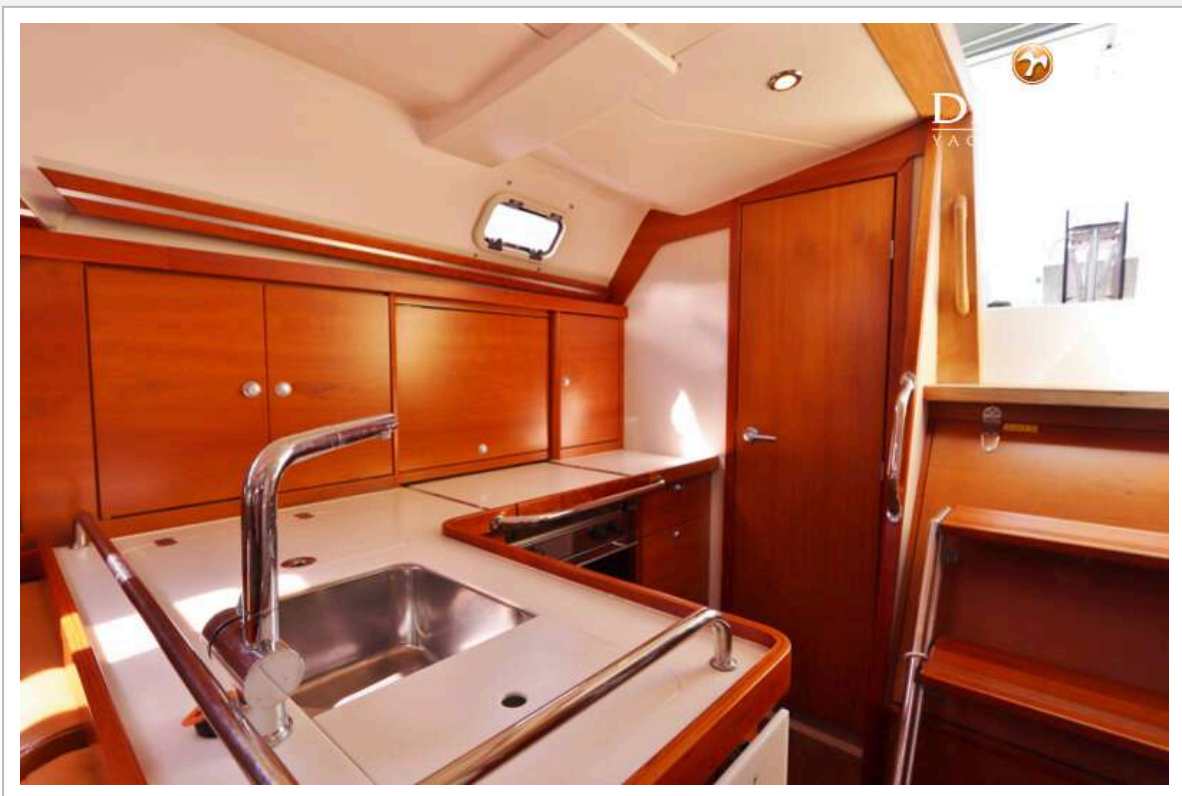


# HANSE 430





# HANSE 430



# HANSE 430

