



ANTARIS NINEFIFTY



ANTARIS NINEFIFTY

BROKER'S COMMENTS

Jachtwerf Antaris has been known for years for its solid construction and beautiful finish. The Antaris Ninefifty (950) is the sister of the Retro 10 but offers more space and comfort and more light and ventilation through the larger windows and a beautiful owner's cabin aft. So you can really enjoy boat trips with the whole family. With a bridge clearance of 2.40 meters and a strong diesel you can discover all waters in Europe. She is from the first owner, well maintained, with nice extras such as bow and stern thruster, heating, electric windlass, etc.

Marc Weijenberg

SPECIFICATIONS

Dimensions	10.50 x 3.30 x 0.75 (m)	Builder	Antaris Shipyard
Built	2006	Cabins	2
Material	GRP	Berths	6
Engine(s)	1 x Vetus DTA44 451A diesel	Hp/Kw	140.00 (hp), 103.04 (kw)
Asking price	sold (VAT)	Lying	elsewhere / Not at sales office

CONTACT

Sales office	De Valk Thuishaven	Telephone	+31 35 5829042
Address	Peperstraat 7 1411 PX Naarden NL	E-mail	thuishaven@devalk.nl

DISCLAIMER

These particulars are given in good faith as supplied but cannot be guaranteed.



GENERAL

Model	ANTARIS NINEFIFTY
Type	motor yacht
LOA (m)	10,50
Beam (m)	3,30
Draft (m)	0,75
Air draft (m)	2,40
Headroom (m)	1,90
Year built	2006
Builder	Antaris Shipyard
Country	The Netherlands
Designer	Antaris Shipyard
Displacement (t)	7,5
CE norm	C
Hull material	GRP
Hull colour	Ferreti creme
Hull shape	hard chine
Superstructure material	GRP
Rubbing strake	fender rope
Deck material	GRP
Deck finish	non-skid moulded in
Cockpit deck finish	teak
Antifouling (year)	2022
Window frame	aluminium
Window material	tempered glass
Deckhatch	1 x
Portholes	aluminium
Mast can be lowered	manual
Fuel tank (litre)	polyethylene 2 x 200 ltrs
Freshwater tank (litre)	polyethylene 1 x 200 ltrs
Blackwater tank (litre)	polyethylene 1 x 150 ltrs



Blackwater tank extraction	deck extraction + pump
Wheel steering	hydraulic
Emergency tiller	yes
Extra info	aircraft 2,40 mtr to 2,70 mtr (2,40 is mast and sprayhood down)

ACCOMMODATION

Cabins	2
Berths	6
Interior	teak
Floor	teak and holly
Open cockpit	yes
Saloon	with dinette and round settee up front
Headroom saloon (m)	1,90
Heating	diesel ducted hot air Webasto Air Top 2000
Aft Cabin	yes
Dinette to convert into berth	with fill-in cushion 2,10 x 1,30 mtr
Sliding door to cockpit	yes
Galley	yes
Countertop	wood
Sink	stainless steel 1 x
Cooker	diesel 2 x Wallas Diesel
Microwave	Sharp (220v)
Fridge	with freezer compartment 12v
Hot water system	220V + engine 40 ltrs
Water pressure system	electrical
Coffee maker	yes
Crockery	yes
Owners cabin	double bed
Bed length (m)	2,10 x 1,50 mtr
Wardrobe	hanging/drawers/shelves
Bathroom	shared 1



Toilet	shared
Toilet system	electric
Wash basin	in the bathroom
Shower	shared
Guest cabin 1	v-bed
Bed length (m)	or bigger with fill-in piece, this open cabin can be closed of 2,00 x 0,70 mtr
Wardrobe	shelves

MACHINERY

No of engines	1
Make	Vetus
Type	DTA44 451A
HP	140
kW	103.04
Fuel	diesel
Year installed	2006
Maximum speed (kn)	10
Cruising speed (kn)	6
Consumption (l/hr)	4
Engine hours	800
Engine cooling system	freshwater heat exchanger
Drive	shaft
Engine controls	bowden cable
Gearbox	mechanical
Bowthruster	electric Vetus 60kgf
Sternthruster	electric Vetus 4hp
Exhaust	watercooled
Thrust bearing	Python
Propeller type	fixed
Propeller blades	4



Propeller shaft material	stainless steel
Shaft lubrication	water
Electric bilge pump	1 x
Electrical installation	12/220v
Start battery	1 x (2021)
Service battery	3 x (2021)
Bowthruster battery	1 x (2021)
Sternthruster battery	1 x (2021)
Battery monitor	yes
Battery charger/inverter	Mastervolt Combi 12v/2000watt/100amp
Shorepower	with cable
Trimtabs	Lenco (electric)

NAVIGATION

Compass	hand compass
Depth sounder/log	Raymarine ST30
VHF	Navman VHF7100
Rudder angle indicator	yes
Plotter/GPS	Raymarine RC435
Electronic chart(s)	1 x
Navigation lights	yes

EQUIPMENT

Fixed windscreen	yes
Sprayhood	(2019)
Cockpit cover	with removable panels (2019)
Cockpit cushions	plus sunbathing cushions aft
Cockpit table	small type
Bathing platform	with Flexiteak
Boarding ladder	yes
Deck shower	hot & cold water



Anchor	CQR Plough Stainless/rvs/nirosta
Anchor chain	yes
Windlass	electrical Quick
Sea railing	stainless steel
Grab rail (superstructure)	stainless steel
Railing side opening gates	2 x
Pushpit	yes
Pulpit	yes
Lifejackets	4 x
Lifebuoy	1 x
Wiper	2 x
Horn	yes
Fenders	with 4 x stainless steel fender-holders
Mooring lines	yes
TV	yes
Radio-cd player	yes
Cockpit speakers	yes
Speakers in salon	yes
Fire extinguisher	2 x
Latest extinguisher survey	(2022)
Extra info	removable co-pilot seat



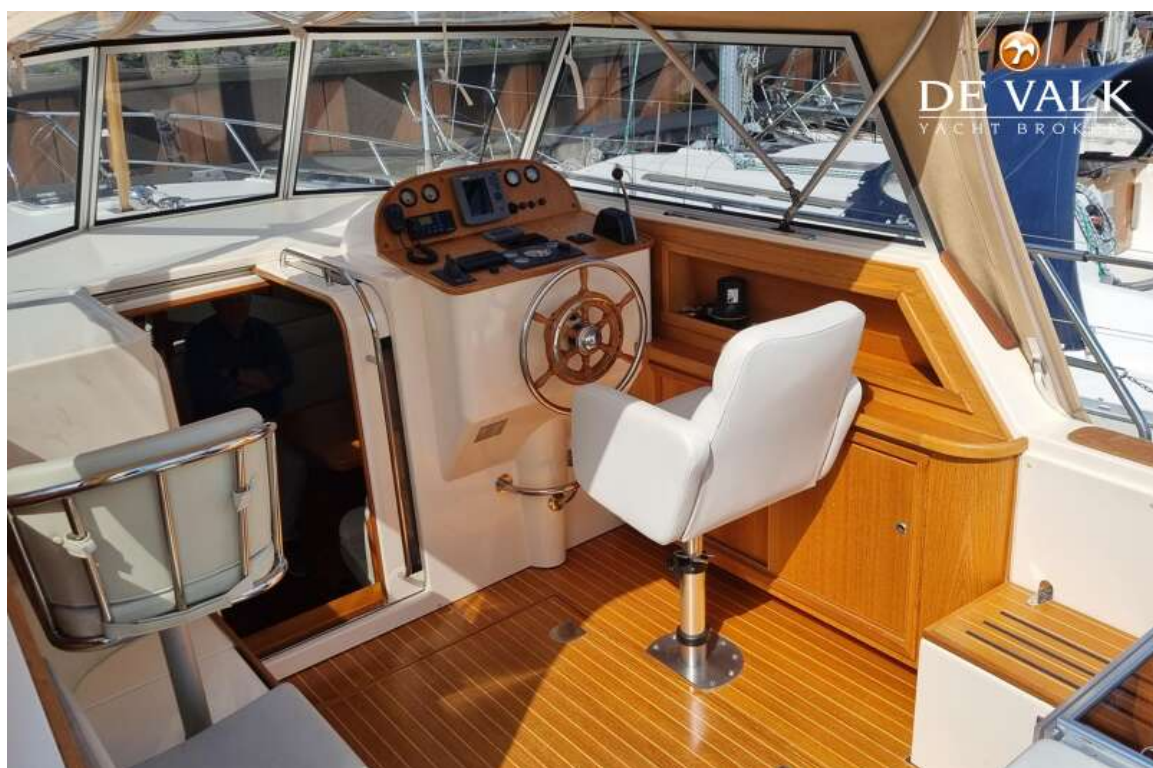
ANTARIS NINEFIFTY



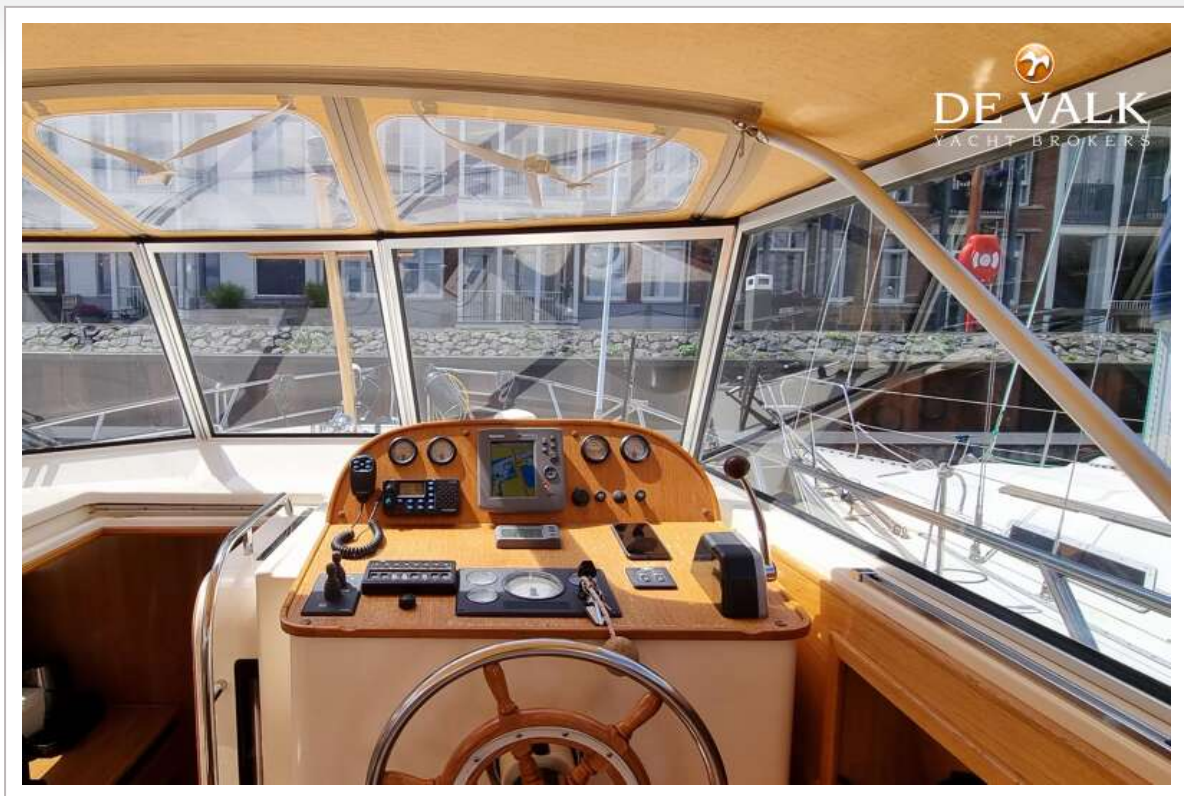
ANTARIS NINEFIFTY



ANTARIS NINEFIFTY



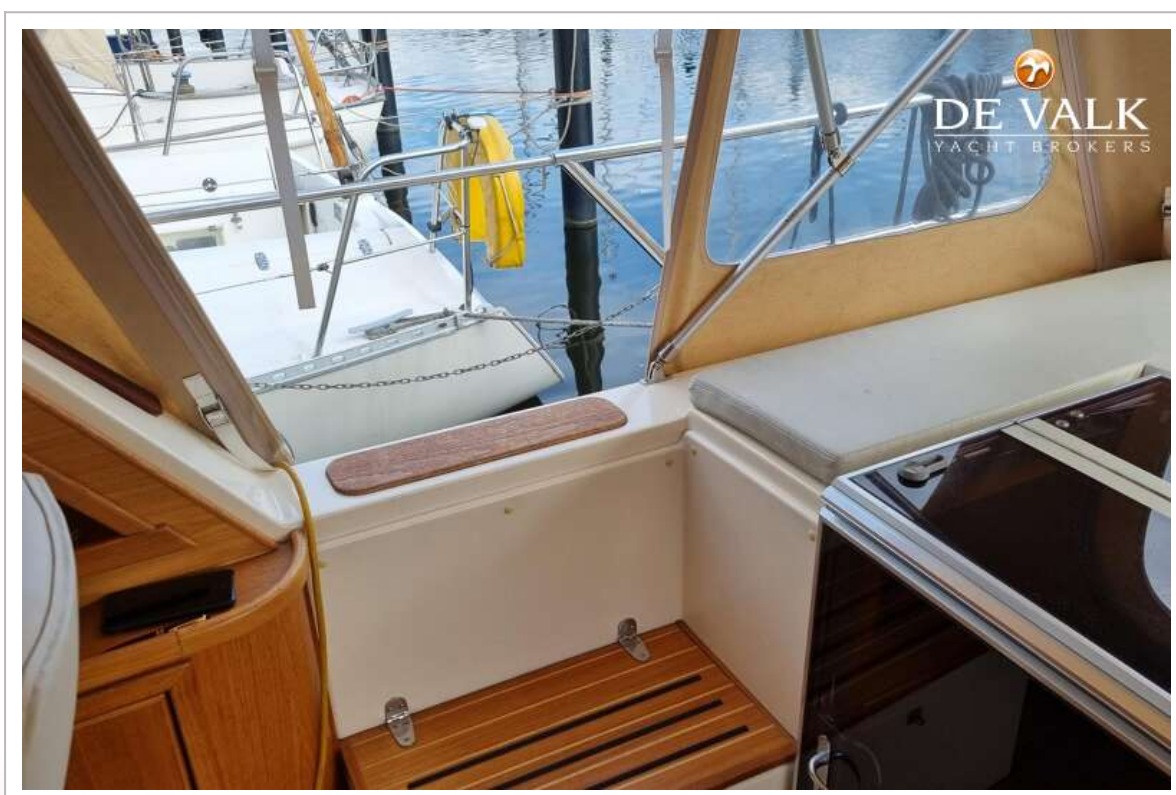
ANTARIS NINEFIFTY



ANTARIS NINEFIFTY



ANTARIS NINEFIFTY



ANTARIS NINEFIFTY



ANTARIS NINEFIFTY



ANTARIS NINEFIFTY



ANTARIS NINEFIFTY



ANTARIS NINEFIFTY



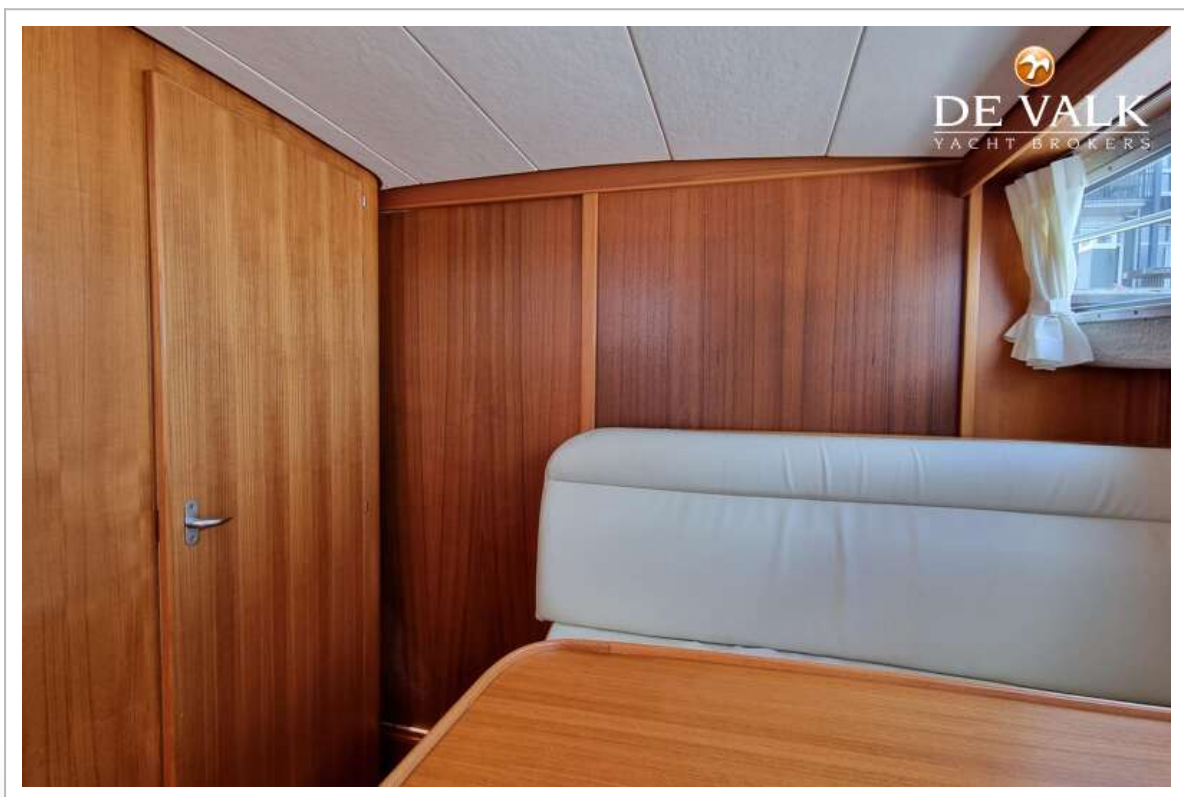
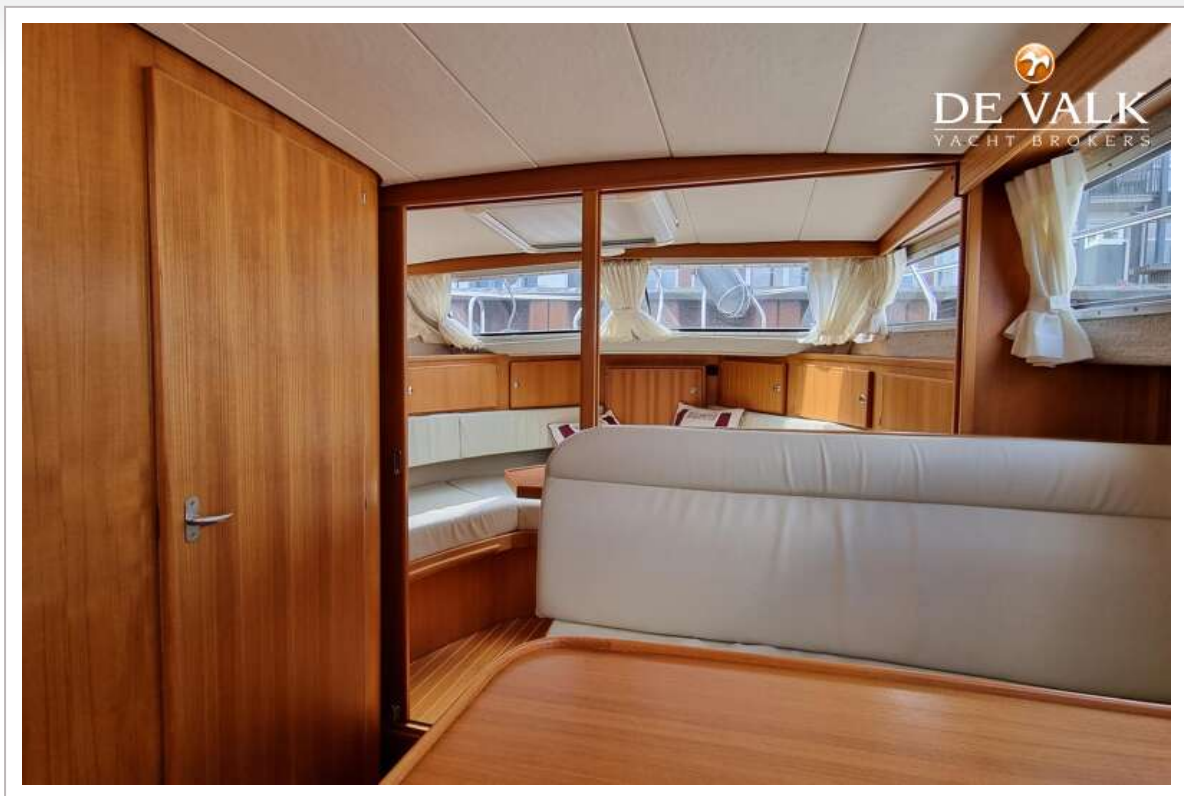
ANTARIS NINEFIFTY



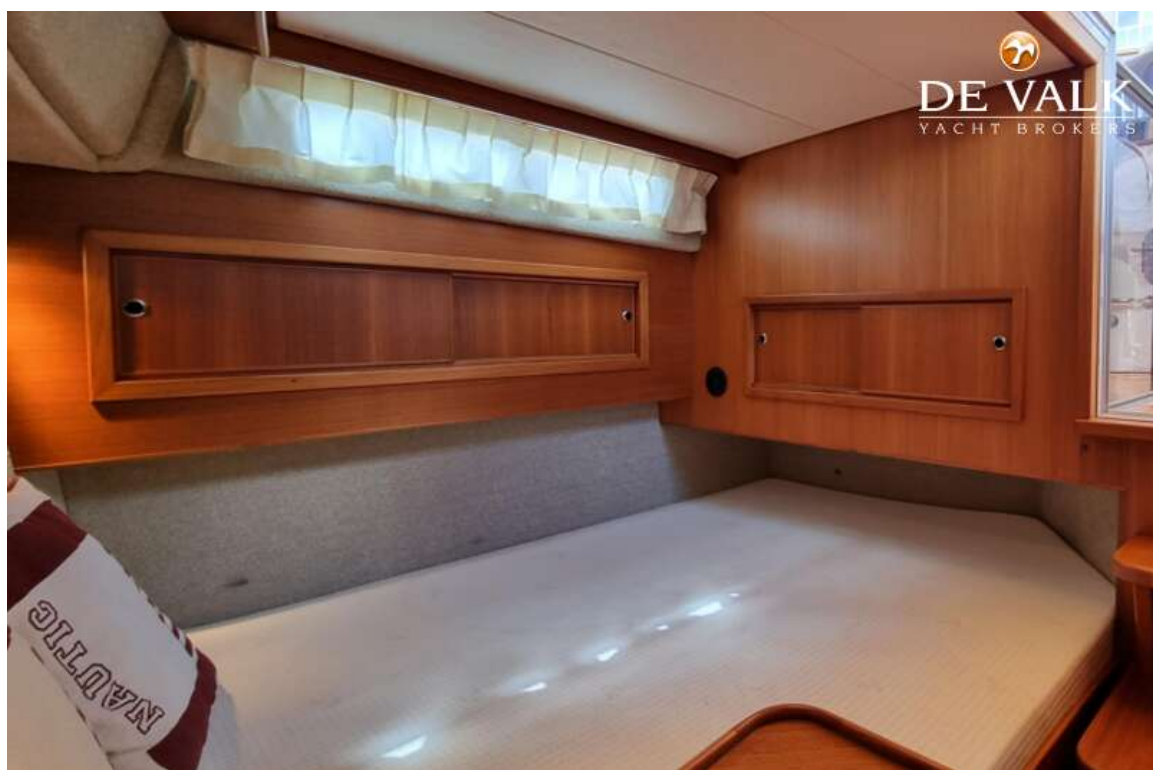
ANTARIS NINEFIFTY



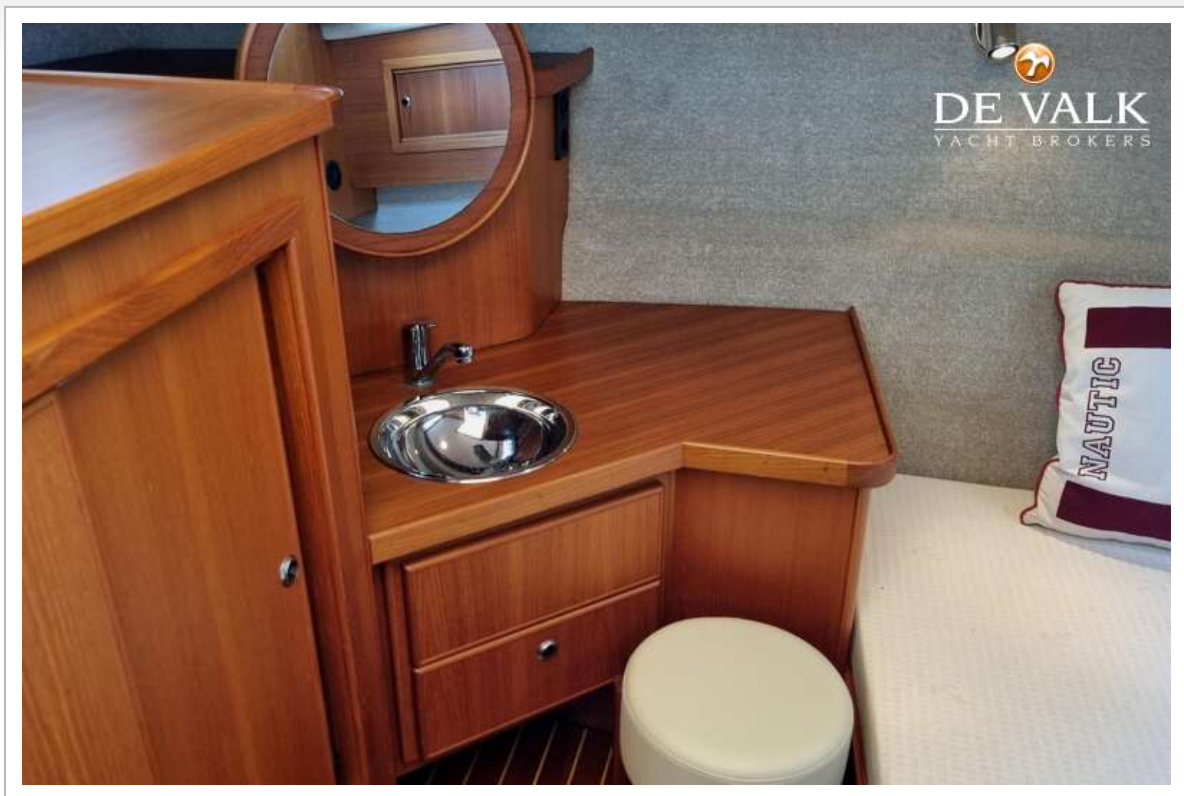
ANTARIS NINEFIFTY



ANTARIS NINEFIFTY



ANTARIS NINEFIFTY



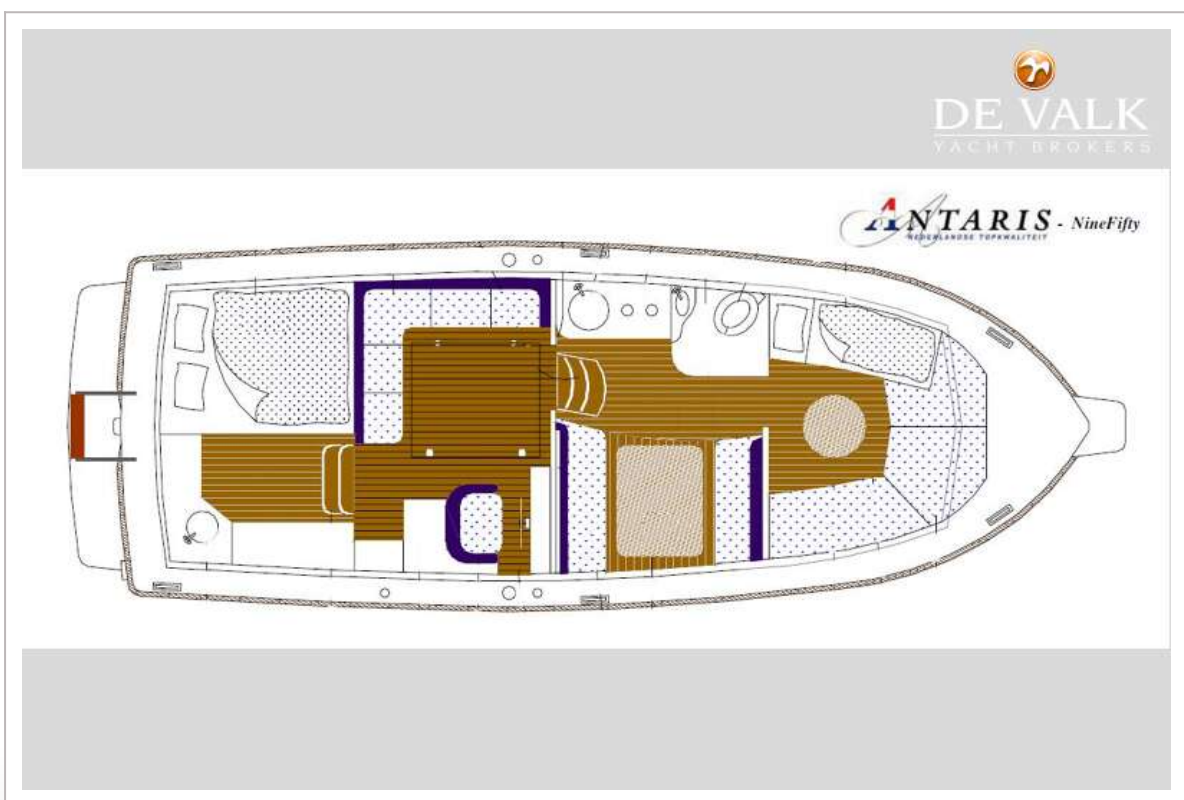
ANTARIS NINEFIFTY



ANTARIS NINEFIFTY



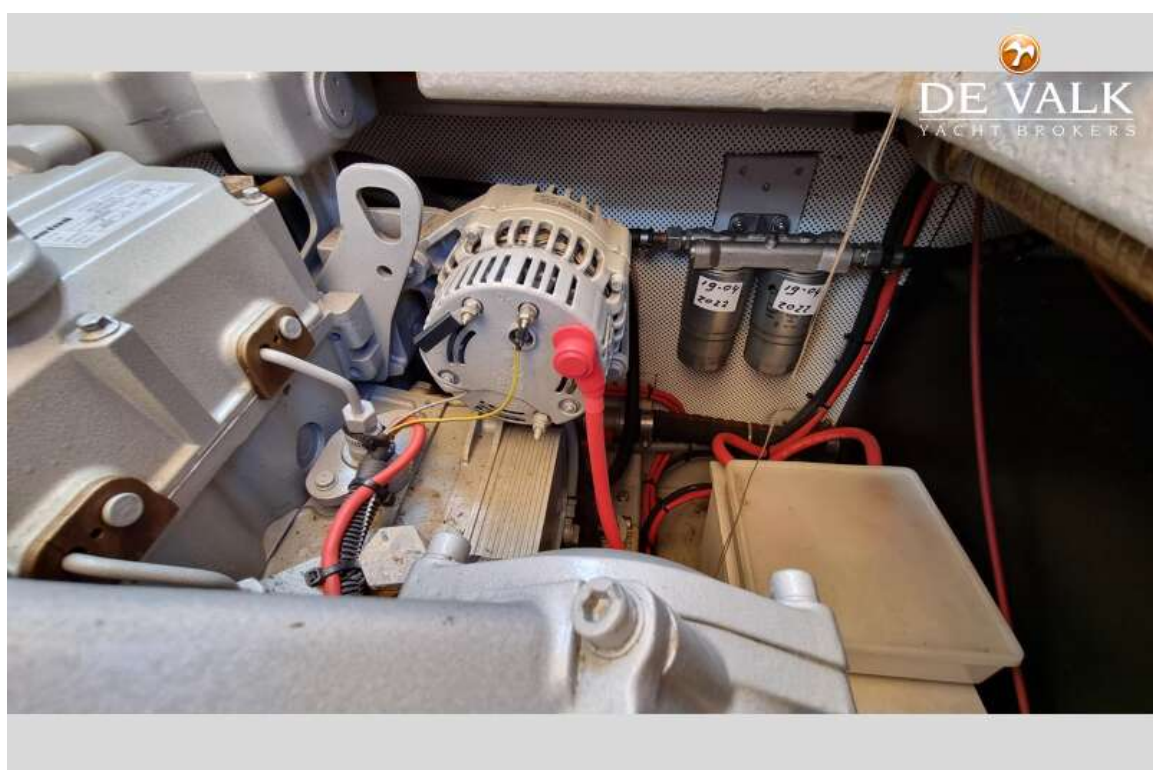
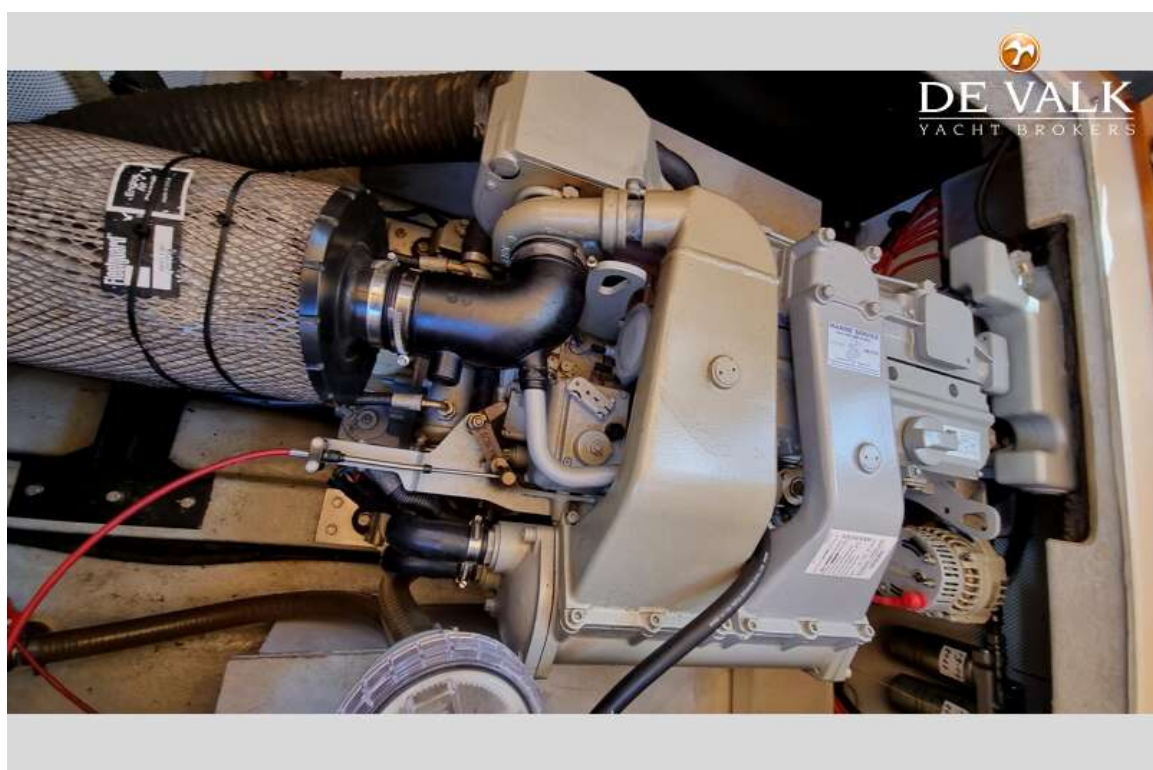
ANTARIS NINEFIFTY



ANTARIS NINEFIFTY



ANTARIS NINEFIFTY



ANTARIS NINEFIFTY

