



DE VALK  
YACHT BROKERS



## PRINCESS V42



DE VALK  
YACHT BROKERS

# PRINCESS V42

## BROKER'S COMMENTS

The Princess V42 is an exceptionally sought-after model with a proven track record and is an extremely versatile motor-cruiser, ideal for day trips as well as being suited for longer cruises. The cockpit offers two large seating areas, a wet bar and stowage for a tender or jetski on the swimming platform. In the saloon an U-shaped sofa/dinette, converting to double berth, cocktail bar and beautifully crafted galley. "Savari" is powered by 2 X Volvo Penta 285HP Diesel engines and a bow thruster for easy docking. Visiting in Amsterdam by appointment.

*Reinier van der Wolf*

## SPECIFICATIONS

<b>Dimensions</b>	12.71 x 3.67 x 0.95 (m)	<b>Builder</b>	Princess Yachts International plc.
<b>Built</b>	2003	<b>Cabins</b>	2
<b>Material</b>	GRP	<b>Berths</b>	6
<b>Engine(s)</b>	2 x Volvo Penta Kad 300 diesel	<b>Hp/Kw</b>	2 x 280.00 (hp), 206.08 (kw)
<b>Asking price</b>	€ 169.500 (VAT Paid)	<b>Lying</b>	at sales office

## CONTACT

<b>Sales office</b>	De Valk Monnickendam	<b>Telephone</b>	+31 299 65 63 50
<b>Address</b>	Hoogedijk 6 1145 PM Katwoude The Netherlands	<b>E-mail</b>	monnickendam@devalk.nl

## DISCLAIMER

These particulars are given in good faith as supplied but cannot be guaranteed.



## GENERAL

<b>Model</b>	PRINCESS V42
<b>Type</b>	motor yacht
<b>LOA (m)</b>	12,71
<b>Beam (m)</b>	3,67
<b>Draft (m)</b>	0,95
<b>Air draft (m)</b>	3,50
<b>Year built</b>	2003
<b>Builder</b>	Princess Yachts International plc.
<b>Country</b>	United Kingdom
<b>Designer</b>	Bernard Olesinski
<b>CE norm</b>	B
<b>Hull material</b>	GRP
<b>Hull colour</b>	white
<b>Hull shape</b>	deep-V
<b>Superstructure material</b>	GRP
<b>Deck material</b>	GRP
<b>Deck finish</b>	non-skid moulded in
<b>Superstructure deck finish</b>	non-skid moulded in
<b>Cockpit deck finish</b>	teak
<b>Antifouling (year)</b>	2021
<b>Deckhatch</b>	2 X
<b>Portholes</b>	8 X
<b>Fuel tank (litre)</b>	360 L
<b>Fuel tank 2 (litre)</b>	360 L
<b>Level indicator (fuel tank)</b>	yes
<b>Freshwater tank (litre)</b>	230 L
<b>Wheel steering</b>	hydraulic

## ACCOMMODATION

<b>Cabins</b>	2
---------------	---



# PRINCESS V42

<b>Berths</b>	6
<b>Floor</b>	carpet
<b>Headroom saloon (m)</b>	approx. 1,95 M.
<b>Heating</b>	diesel ducted hot air
<b>Aft Cabin</b>	yes
<b>Dinette</b>	yes
<b>Dinette to convert into berth</b>	yes
<b>Sliding door to cockpit</b>	yes
<b>Galley</b>	yes
<b>Countertop</b>	Duropal
<b>Sink</b>	stainless steel
<b>Cooker</b>	calor gas
<b>Microwave/oven combi</b>	Panasonic
<b>Fridge</b>	yes
<b>Hot water system</b>	yes
<b>Water pressure system</b>	electrical
<b>Owners cabin</b>	French bed
<b>Wardrobe</b>	hanging and drawers
<b>Bathroom</b>	en suite
<b>Toilet</b>	en suite
<b>Toilet system</b>	electric
<b>Wash basin</b>	in the bathroom
<b>Shower</b>	en suite
<b>Guest cabin 1</b>	twin single
<b>Wardrobe</b>	shelves
<b>Wet bar</b>	in cockpit + fridge

## MACHINERY

<b>No of engines</b>	2
<b>Make</b>	Volvo Penta
<b>Type</b>	Kad 300



# PRINCESS V42

<b>HP</b>	280
<b>kW</b>	206.08
<b>Fuel</b>	diesel
<b>Maximum speed (kn)</b>	35
<b>Engine hours</b>	Approx 830
<b>Engine cooling system</b>	freshwater heat exchanger
<b>Drive</b>	Z-drive
<b>Engine controls</b>	electrical
<b>Bowthruster</b>	yes
<b>Manual bilge pump</b>	yes
<b>Electric bilge pump</b>	yes
<b>Start battery</b>	Varta
<b>Service battery</b>	Varta
<b>Battery charger</b>	Mastervolt 12/50-3
<b>Inverter</b>	2000 W.
<b>Shorepower</b>	yes
<b>Trimtabs</b>	yes

## NAVIGATION

<b>Compass</b>	Danforth
<b>Depth sounder</b>	Raymarine ST60
<b>Log</b>	Raymarine ST60
<b>VHF</b>	Shipmate
<b>Autopilot</b>	Raymarine ST6001 + Remote autopilot
<b>Rudder angle indicator</b>	Raymarine ST60
<b>Plotter/GPS</b>	Raymarine e-127 hybrid touch
<b>Navigation lights</b>	LED
<b>Searchlight</b>	yes

## EQUIPMENT

<b>Fixed windscreen</b>	yes
-------------------------	-----



# PRINCESS V42

Sprayhood	yes
Cockpit cover	new in 2019
Sun awning	yes
Cockpit cushions	yes
Cockpit table	yes
Bathing platform	yes
Boarding ladder	yes
Transom door	yes
Deck shower	yes
Anchor	yes
Anchor chain	yes
Windlass	electrical
Sea railing	tube
Pulpit	yes
Wiper	yes
Horn	yes
Fenders	yes
Mooring lines	yes
TV	yes
TV receiver	yes
Radio-cd player	yes
Cockpit speakers	yes
Speakers in salon	yes
Clock - barometer	yes



# PRINCESS V42



# PRINCESS V42





# PRINCESS V42



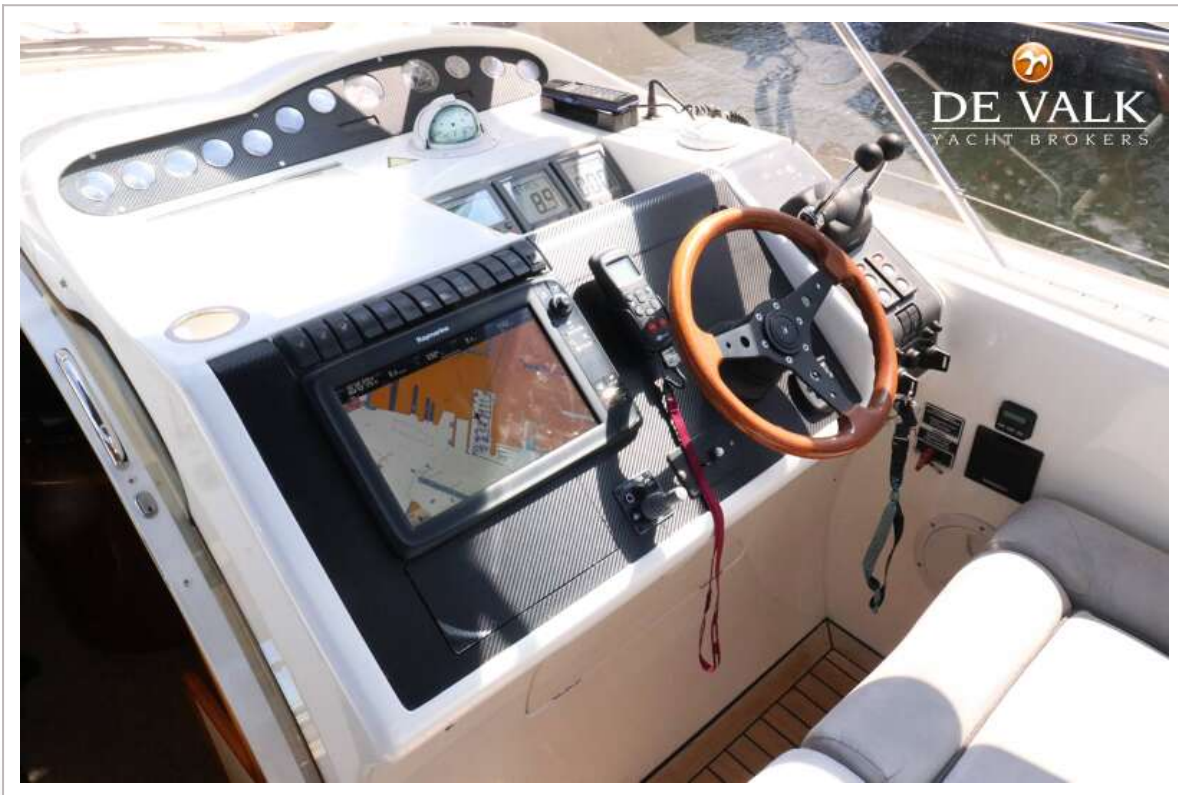
# PRINCESS V42



# PRINCESS V42



# PRINCESS V42



# PRINCESS V42



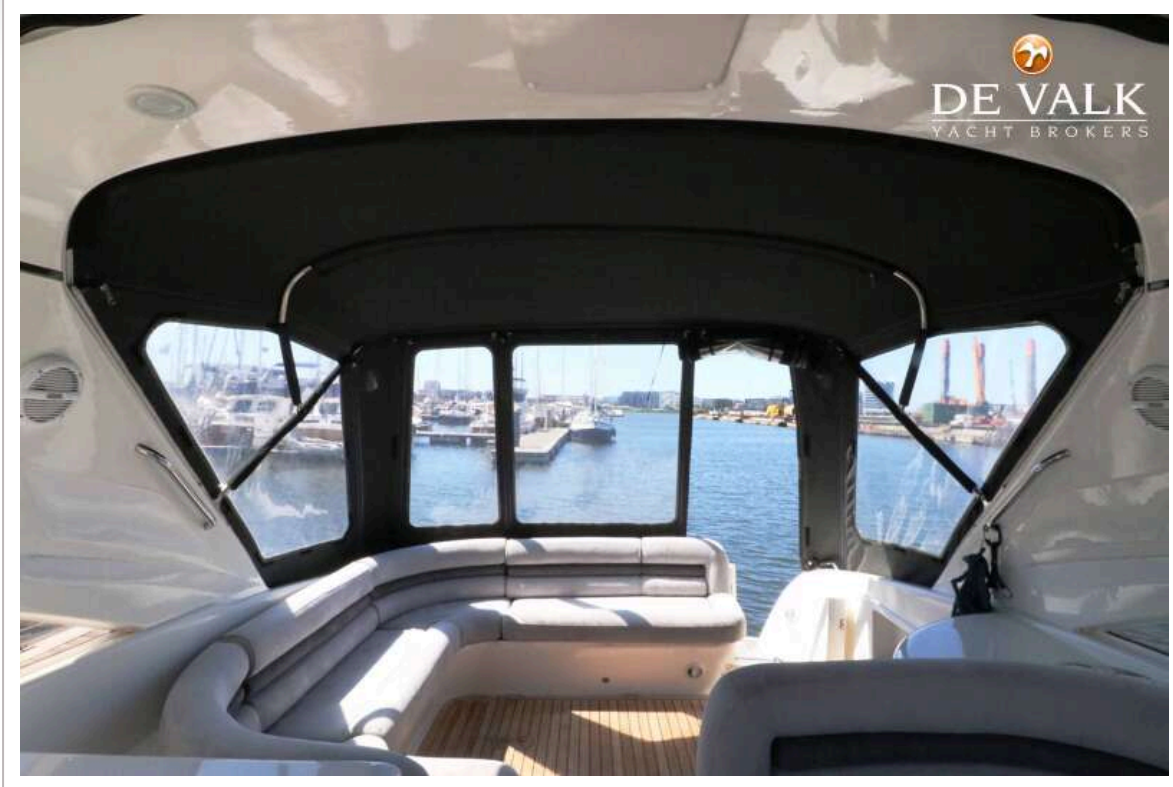
# PRINCESS V42



# PRINCESS V42



# PRINCESS V42





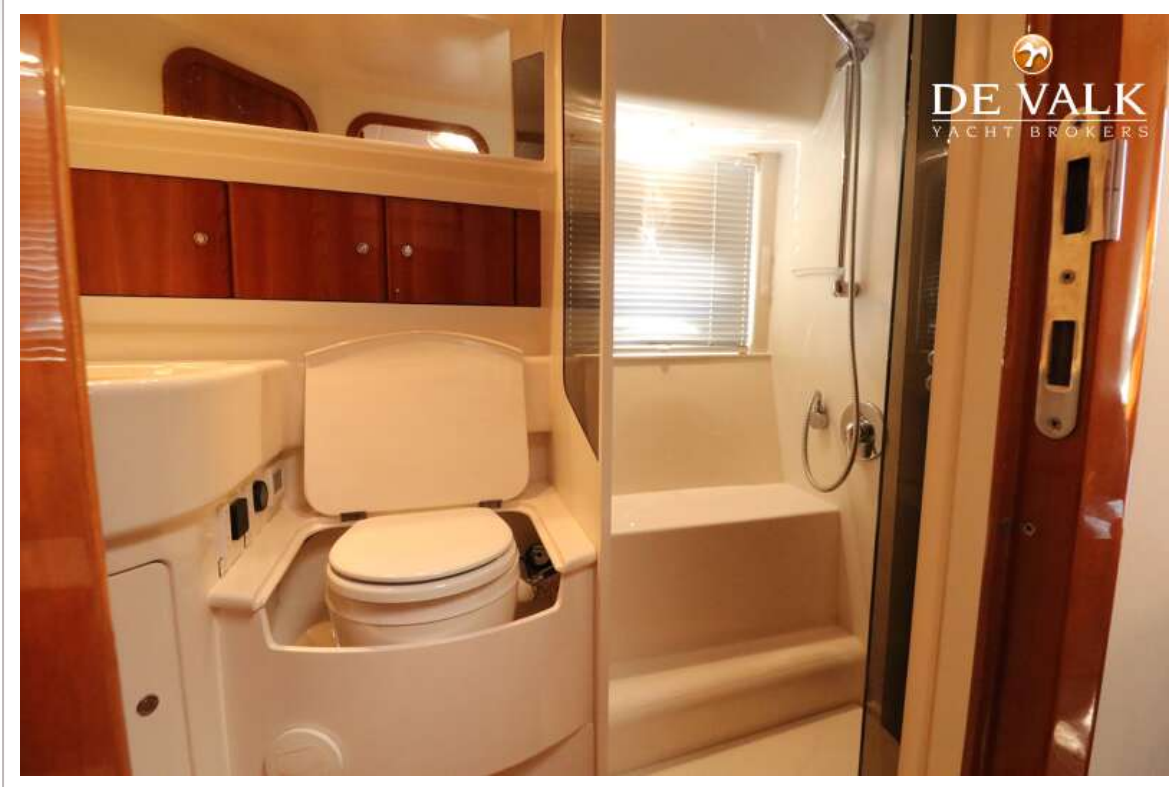
# PRINCESS V42



# PRINCESS V42



# PRINCESS V42



# PRINCESS V42



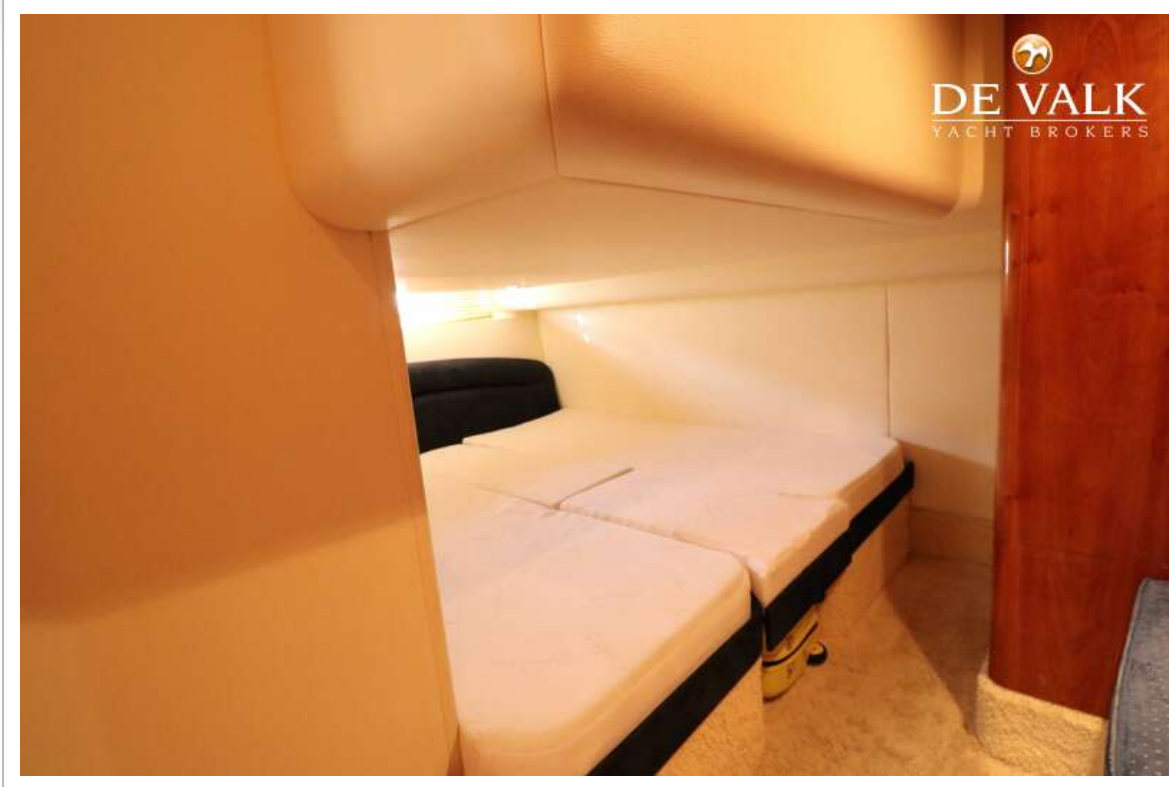
# PRINCESS V42



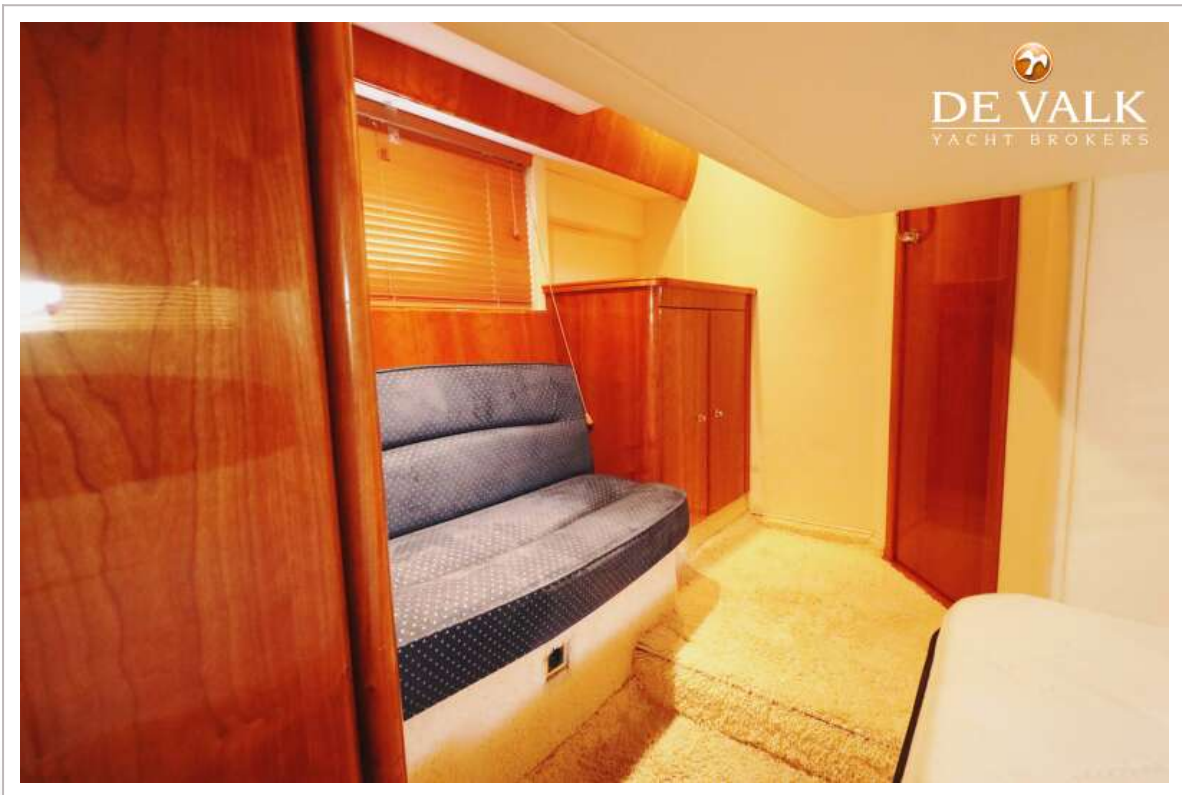
# PRINCESS V42



# PRINCESS V42



# PRINCESS V42

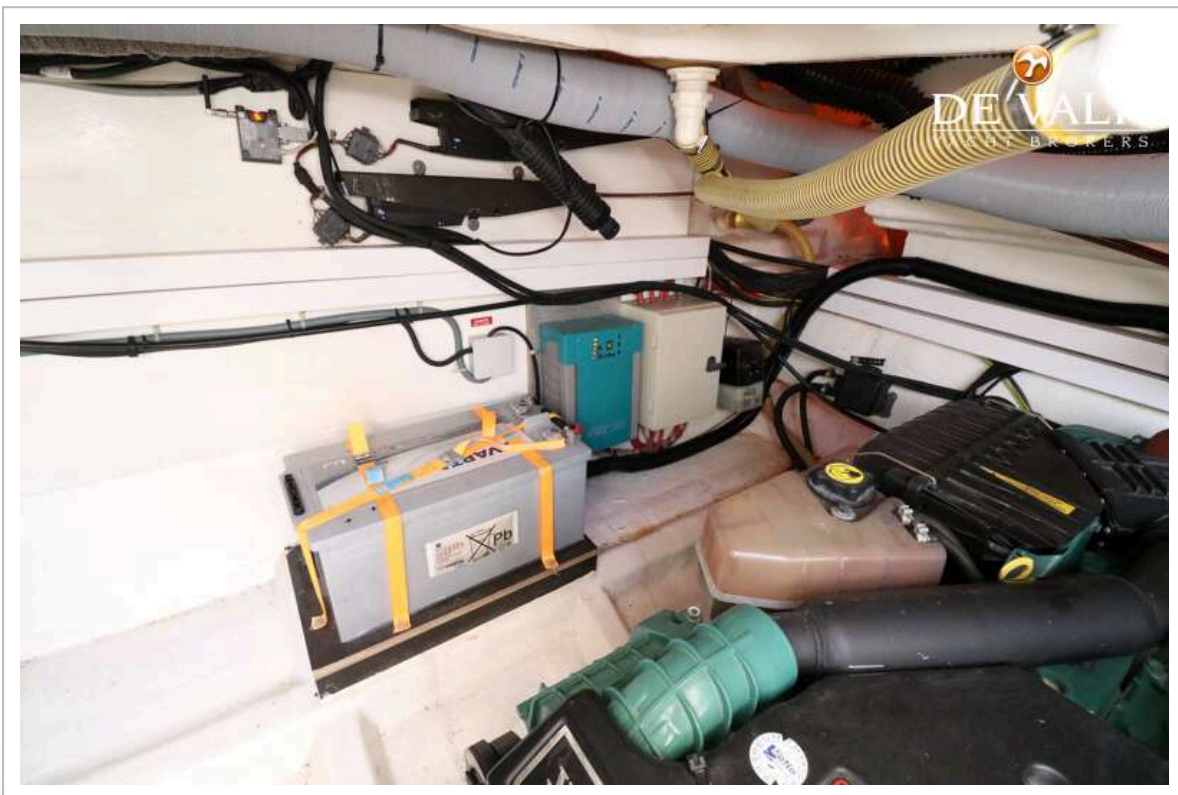




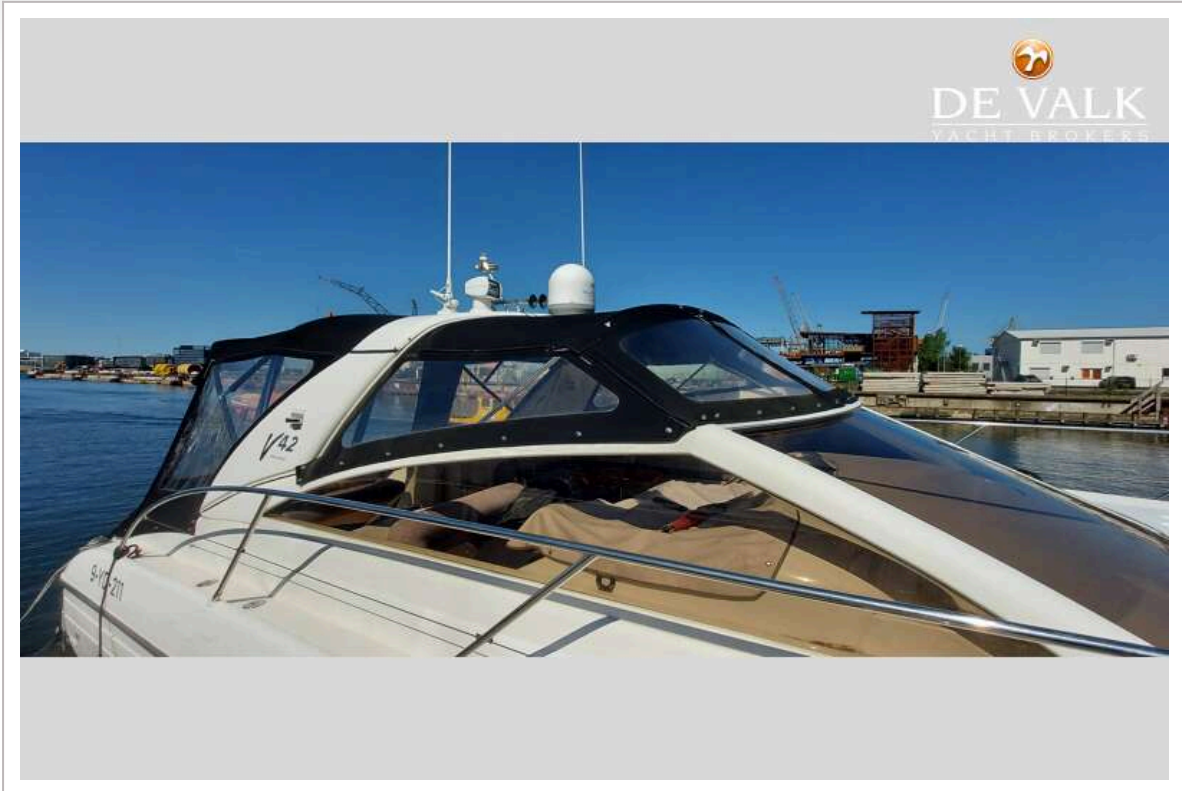
# PRINCESS V42



# PRINCESS V42



# PRINCESS V42



# PRINCESS V42

