



DE VALK
YACHT BROKERS



CUMULANT 40



DE VALK
YACHT BROKERS

BROKER'S COMMENTS

This beautiful sailing yacht, built by Cumulant Yachts in Harlingen and designed by Van de Stadt & Partners is blessed with excellent sailing capacities, lifting keel (1,20/2,20 m) and a warm classic interior. The yacht is kept in very good condition and is well equipped with the necessary navigation instruments. The hydraulic lifting keel and her two rudders makes her very suitable for beaching and go to places where no one has been before. This yacht can be seen in our sales marina 7 days a week.

Reinier van der Wolf

SPECIFICATIONS

Dimensions	12.20 x 3.85 x 1,20 / 2.20 (m)	Builder	HJB Cumulant Yachts, Harlingen
Built	1994	Cabins	2
Material	Steel	Berths	6
Engine(s)	1 x Yanmar 3JH2TE diesel	Hp/Kw	48.00 (hp), 35.33 (kw)
Asking price	sold (VAT)	Lying	at sales office

CONTACT

Sales office	De Valk Monnickendam B.V.	Telephone	+31 (0)299 65 63 50
Address	Hoogedijk 6 1145 PM Katwoude NL	E-mail	monnickendam@devalk.nl

DISCLAIMER

These particulars are given in good faith as supplied but cannot be guaranteed.



GENERAL

Model	CUMULANT 40
Type	sailing yacht
LOA (m)	12,20
LWL (m)	10,80
Beam (m)	3,85
Draft (m)	2,20
Draft min (m)	1,20
Air draft (m)	17,00
Headroom (m)	2,00
Year built	1994
Launched	1994
Builder	HJB Cumulant Yachts, Harlingen
Country	The Netherlands
Designer	E.G. Van der Stadt
Displacement (t)	13,5
Ballast (tonnes)	cast iron 4,5
Hull material	steel
Hull colour	blue
Hull thickness (mm)	5 - 6
Hull shape	round-bilged
Keel type	lifting keel Hydraulic
Superstructure material	steel
Superstructure (mm)	4
Rubbing strake	steel
Deck material	steel
Deck finish	teak 1994
Superstructure deck finish	teak
Cockpit deck finish	teak
Antifouling (year)	2022
Window frame	aluminium



Window material	tempered glass
Deckhatch	yes
Portholes	aluminium
Insulation	Up to the waterline
Radar arch	non collapsible
Fuel tank (litre)	270
Level indicator (fuel tank)	(2021)
Freshwater tank (litre)	polyethylene 400
Level indicator (freshwater)	(2021)
Blackwater tank (litre)	polyethylene 100
Level indicator (blackwater)	yes
Blackwater tank extraction	deck extraction + pump
Wheel steering	mechanical
More info on paintwork	yacht powder coated and painted in 2010 by Klaver Yacht Painting.

ACCOMMODATION

Cabins	2
Berths	6
Interior	teak
Floor	woodprint
Doghouse	with sprayhood
Saloon	yes
Headroom saloon (m)	> 2,00
Heating	diesel ducted hot air Ardic
Aft Cabin	yes
Dinette	yes
Convertible berth	yes
Galley	yes
Countertop	plastic
Sink	stainless steel



Cooker	calor gas 3 burner
Oven	yes
Fridge	yes
Freezer	yes
Hot water system	220V + engine
Water pressure system	yes
Owners cabin	double bed After/achter/hinten
Wardrobe	hanging and shelves
Bathroom	separate After/achter/hinten
Toilet	separate After/achter/hinten
Toilet system	yes
Wash basin	in the bathroom
Shower	separate
Guest cabin 1	v-bed Front/voor/Forne
Bed length (m)	1.95
Wardrobe	shelves
Bathroom	en suite
Wash basin	in the bathroom
Shower	en suite
Extra info	Cabin lamps LED

MACHINERY

No of engines	1
Make	Yanmar
Type	3JH2TE
HP	48
kW	35.33
Fuel	diesel
Year installed	1994
Maximum speed (kn)	7
Cruising speed (kn)	5



Consumption (l/hr)	2,5
Range (nm)	320
Engine cooling system	freshwater heat exchanger
Drive	shaft
Engine controls	yes
Gearbox	mechanical
Bowthruster	electric
Exhaust	watercooled
Propeller type	fixed
Propeller blades	yes
Propeller shaft material	stainless steel
Shaft lubrication	yes
Manual bilge pump	yes
Electric bilge pump	yes
Generator	Portable
Batteries	of which 4 AGM 105 Amp renewed (2021) 6
Start battery	1
Service battery	4
Windlass battery	(2021)
Battery monitor	yes
Battery charger	separate computer controlled charger for bow thruster (2021)
Battery charger/inverter	Victron
Diode battery combiners	yes
Shorepower	with cable 20 m.cable
Extra info	100 Amp alternator (2022)
Extra info	Engine hour meter (2021)

NAVIGATION

Compass	yes
Depth sounder/log	yes
Windset	yes



Repeater	yes
VHF	including outside speaker Shipmate RS 8300 DSC
Autopilot	+ spare digital computer en cables (2021) Garmin (2020)
Rudder angle indicator	Garmin (2020)
Radar	Raymarine
Plotter	yes
Radar/GPS/plotter	C70 Raymarine
AIS receiver	Ertrak (2021)
AIS transponder	Ertrak (2021)
Radio receiver	yes
EPIRB	2021
Navigation lights	yes

EQUIPMENT

Fixed windscreen	yes
Sprayhood with grab rail	yes
Sun awning	yes
Cockpit table	yes
Boarding ladder	stainless steel
Deck shower	yes
Anchor	Danforth
Anchor 2	Danforth
Anchor chain	+ 50 m. stern anchor 60m.
Windlass	electrical
Dinghy	inflatable (2020)
Outboard	2,5 hp
Outboard support	yes
Sea railing	wire
Grab rail (superstructure)	teak
Pushpit	yes
Pulpit	yes



Life raft	valise (or bag)
Life raft (pers)	6
Safety harness	yes
Lifebuoy	yes
Radar reflector	yes
Fenders	yes
Mooring lines	yes
TV	Sony Bravia LED
Radio-cd player	Sony
Surround Sound System	yes
Speakers in salon	yes
Clock - barometer	yes
Fire extinguisher	yes

RIGGING

Rigging	fractional
Standing rigging	wire 2015
Material mast	aluminium
Spreaders	yes
Mainsail cover	over main drop system
Battcars	yes
Fully battened mainsail	with main drop system UK De Vries (2015)
Genoa	yes
Genoa I	with UV stroke Solent (2015)
Genoa II	with UV stroke Solent (2015)
Genoa cover	yes
Cutter furler	yes
Reefing System	slabreefing From out cockpit
Backstay adjuster	mechanical
Boomvang	German sheet system
Primary sheet winch	2x Meissner 28ST



Genoa sheetwinches

2x Meissner 28ST

Extra info

Lines routed back to the cockpit (single-handed)



CUMULANT 40





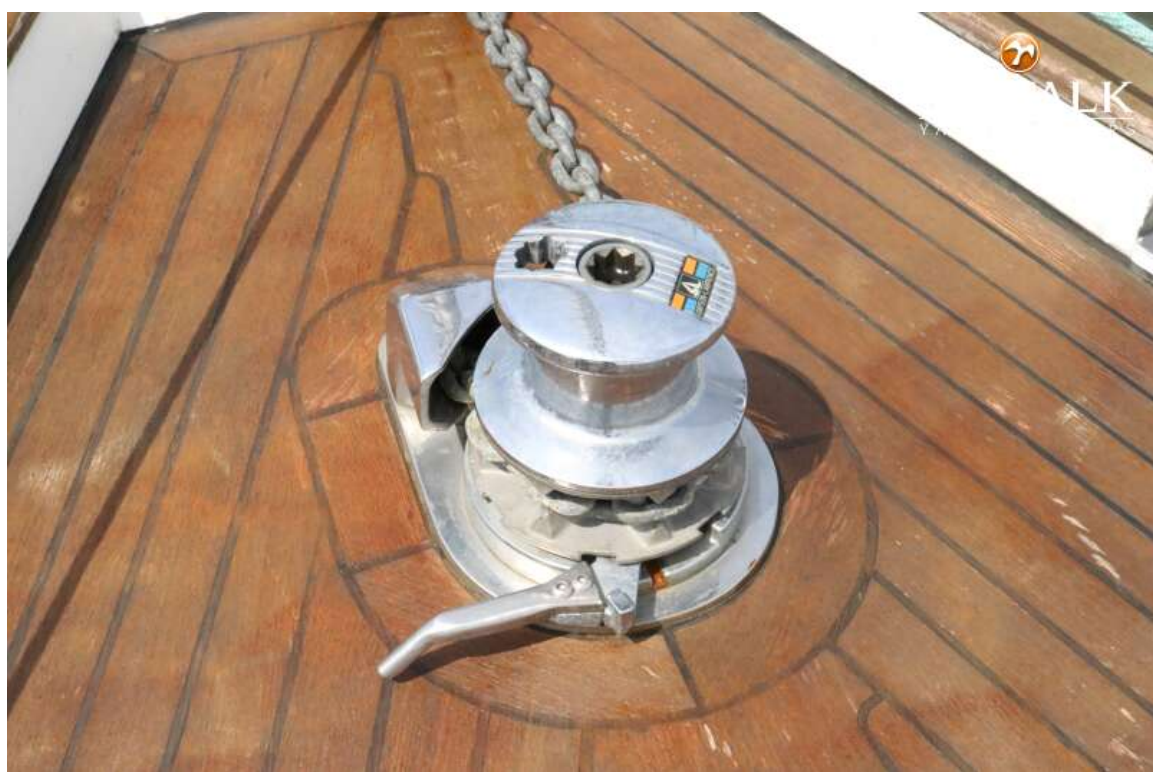
CUMULANT 40



CUMULANT 40



CUMULANT 40





CUMULANT 40



CUMULANT 40



CUMULANT 40



CUMULANT 40



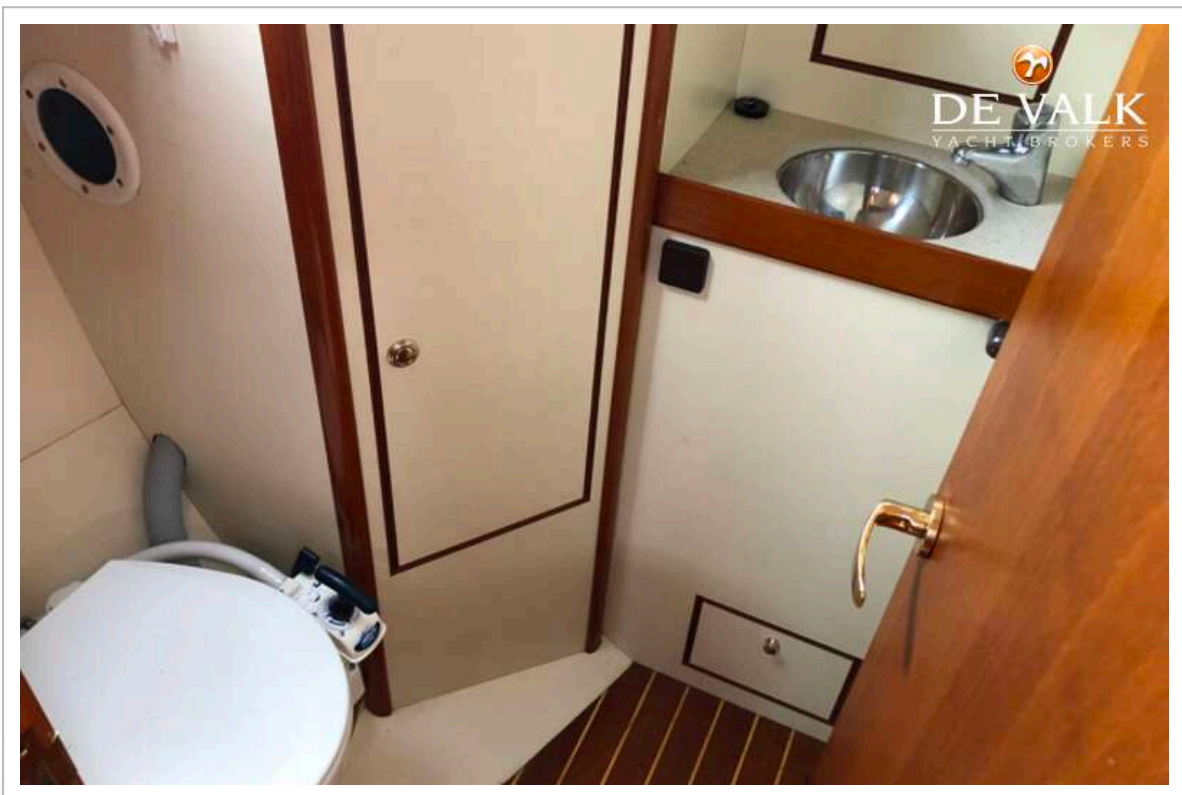
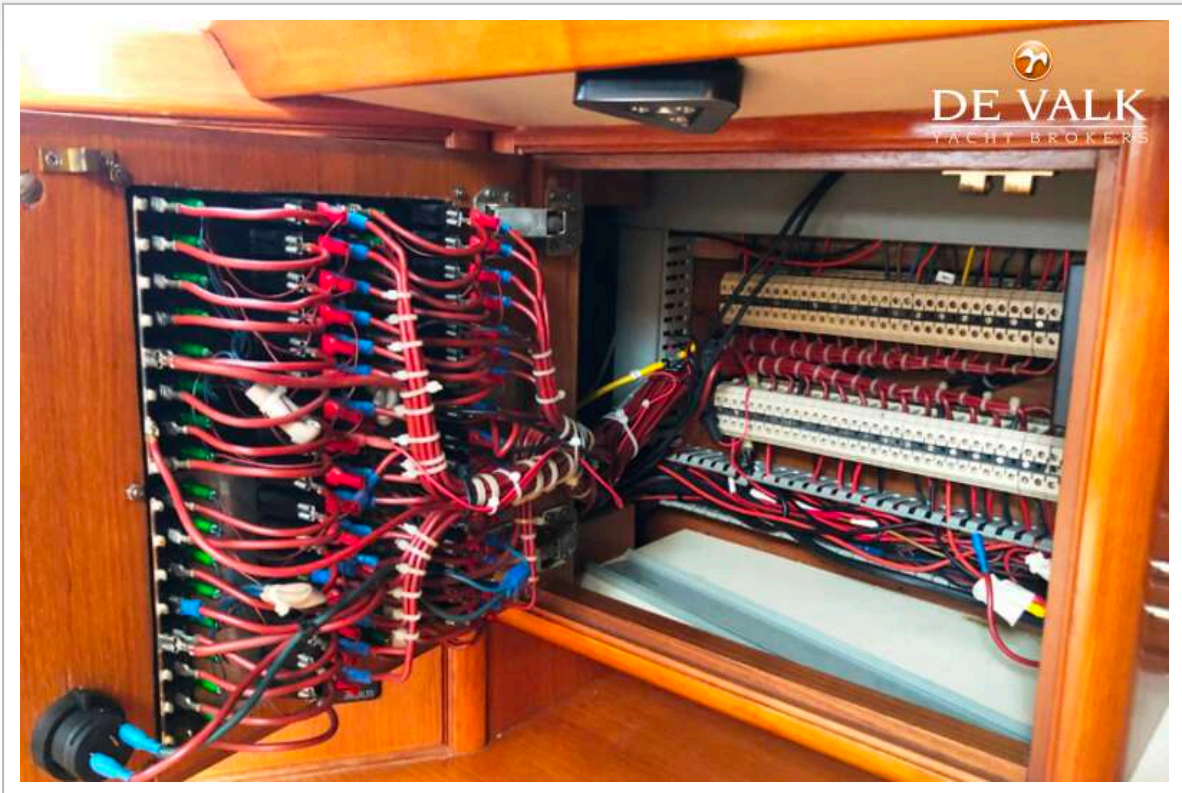
CUMULANT 40



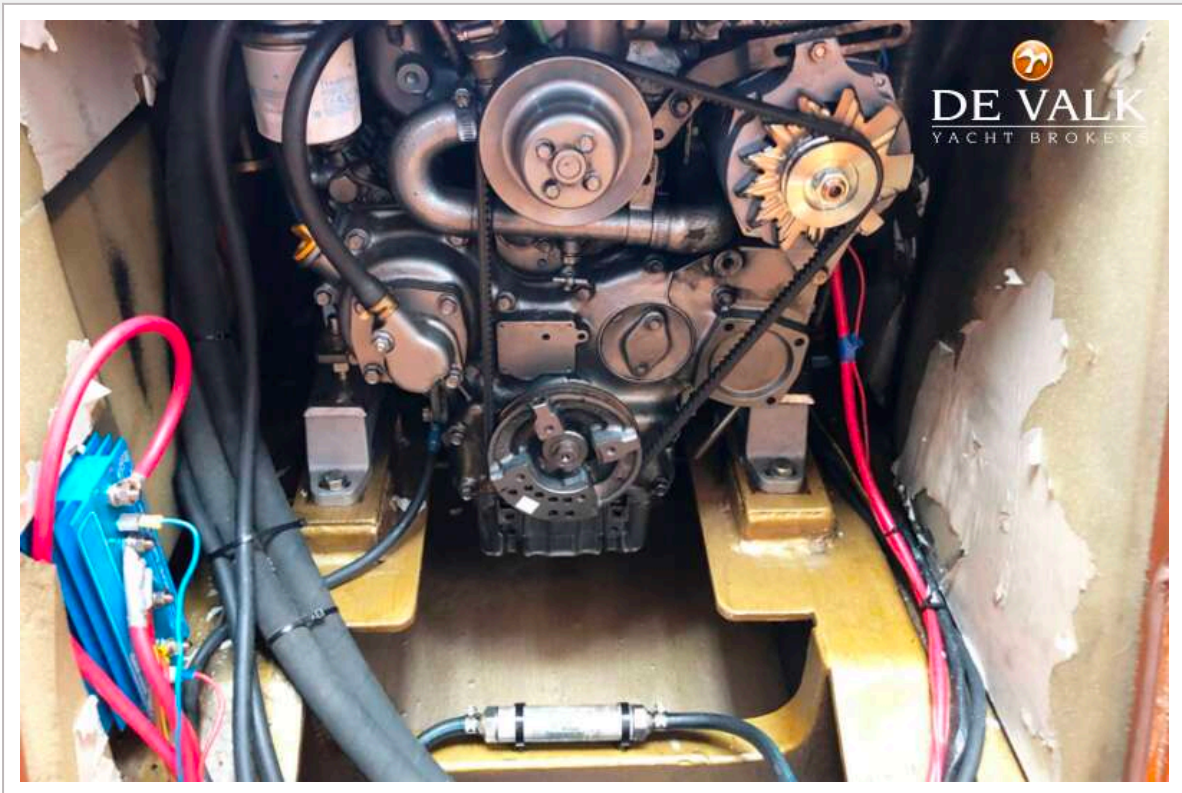
CUMULANT 40



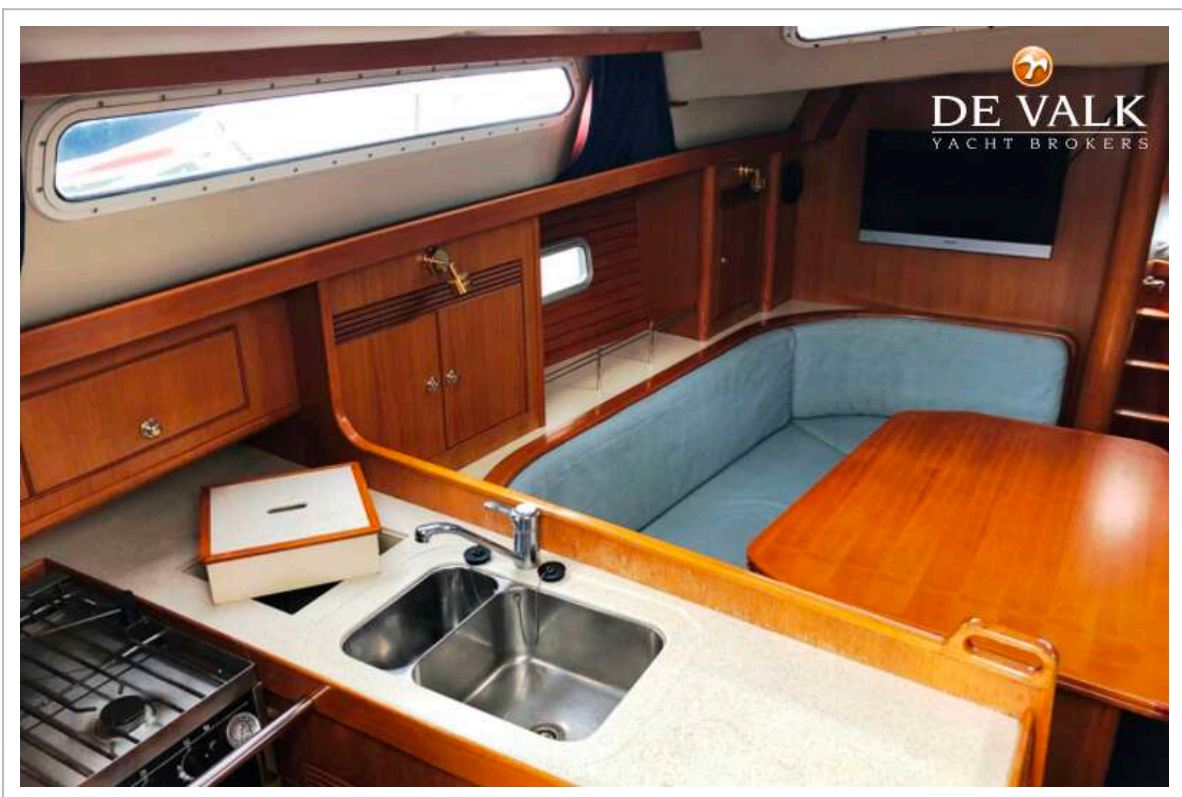
CUMULANT 40



CUMULANT 40



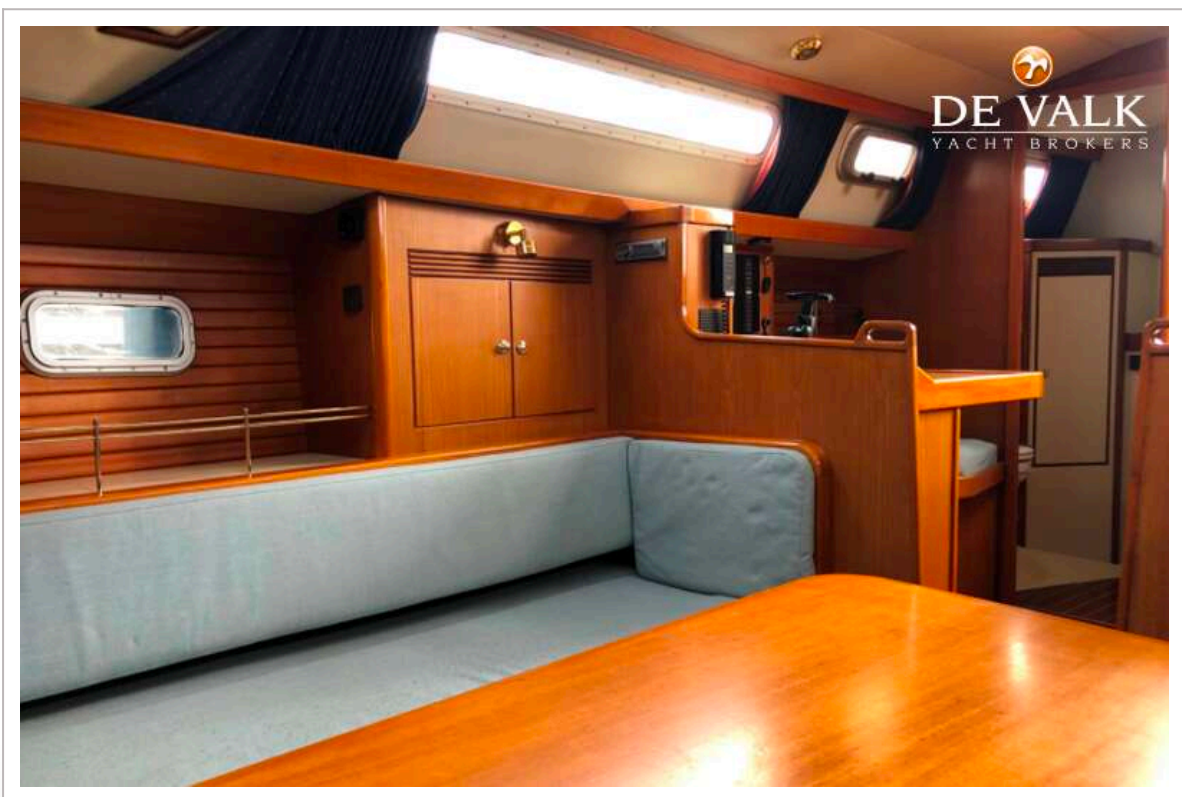
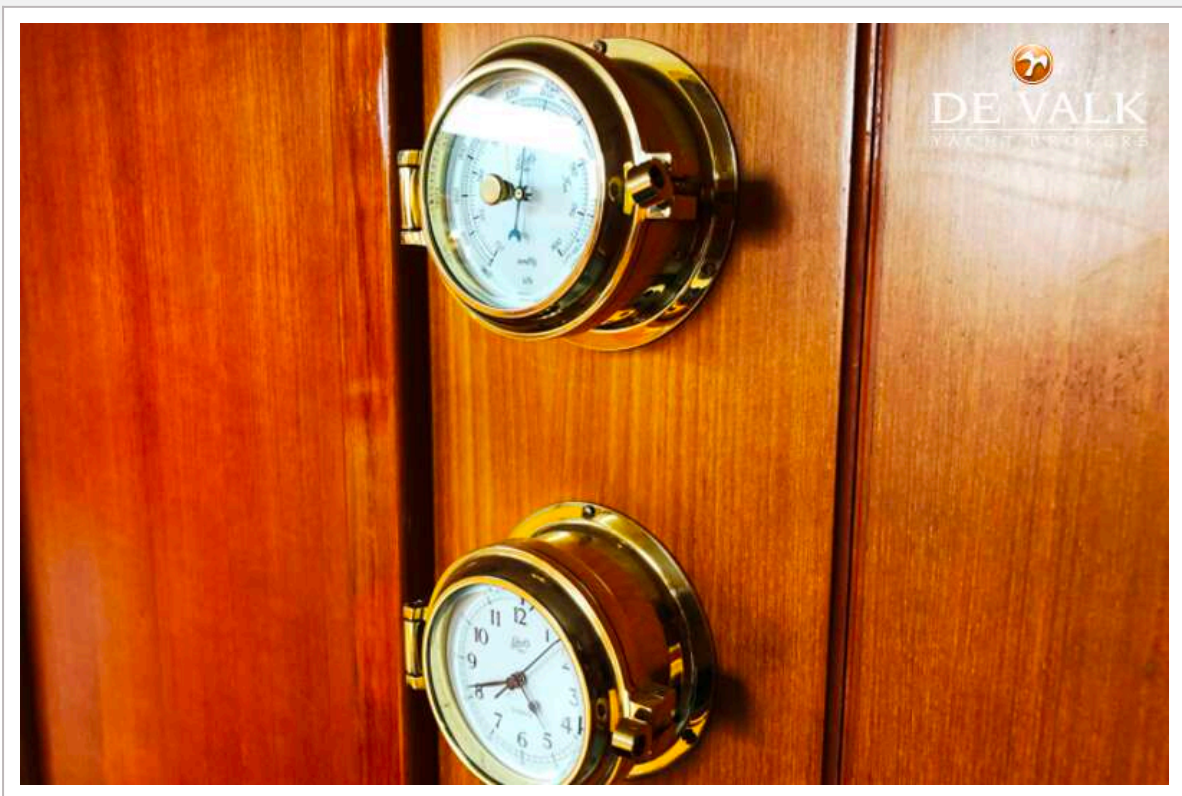
CUMULANT 40



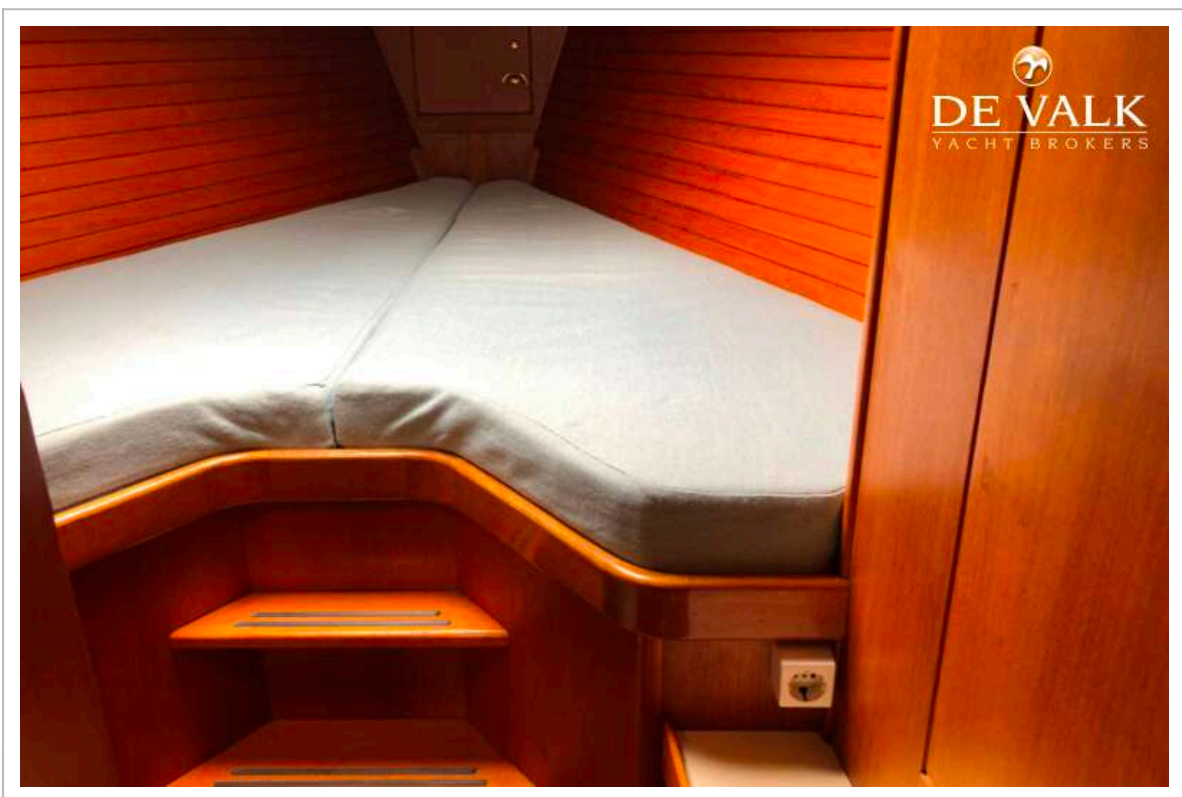
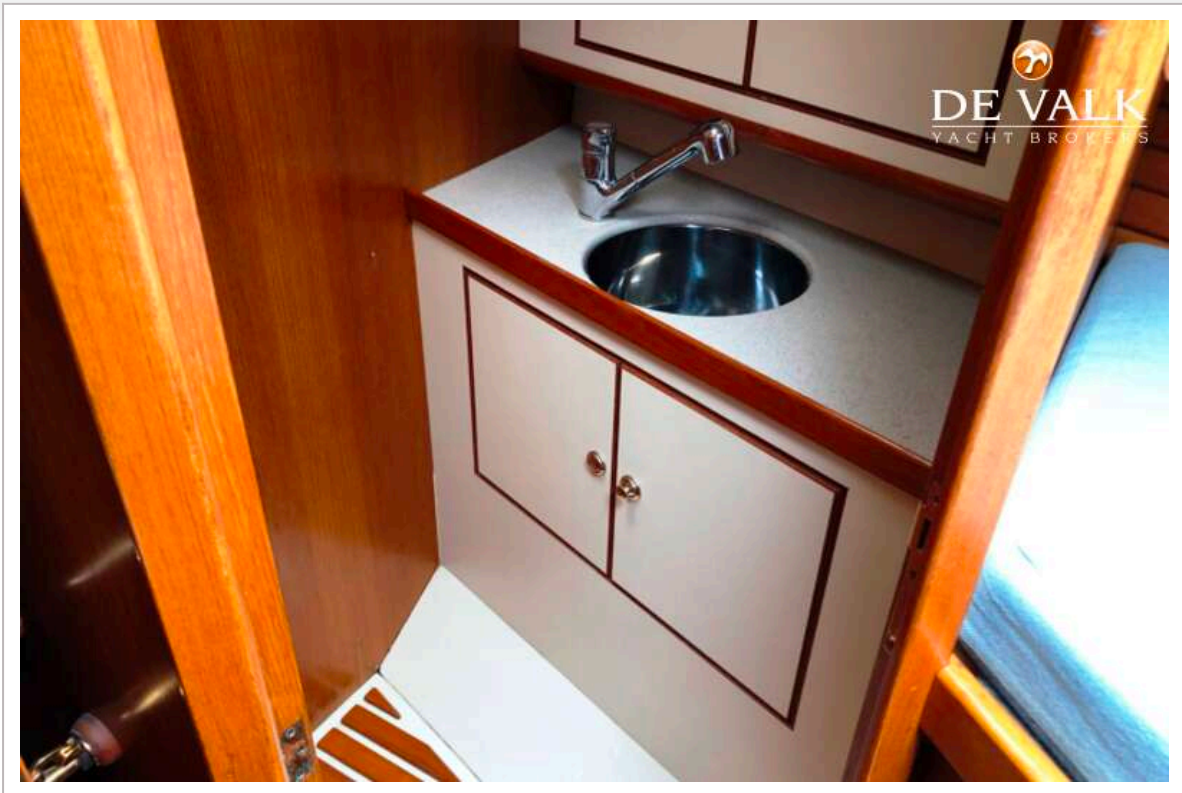
CUMULANT 40



CUMULANT 40



CUMULANT 40



CUMULANT 40

