



DE VALK
YACHT BROKERS



ALLURES 45 CENTERBOARD



DE VALK
YACHT BROKERS

ALLURES 45 CENTERBOARD

BROKER'S COMMENTS

The Allures 45 centerboard is a sailing yacht specially designed for safe long distance cruising in both Arctic latitudes and tropical waters. The Allures 45 Centerboard is built for comfortable shorthanded sailing due to her full batten main and electric winches. Her onboard equipment and layout with ample storage make her ideal to be your home for long periods at sea. Her centerboard shallow draft allows you to get to those exotic beaches and avoid those crowded marinas. This yacht just had its 5-year check up at the shipyard.

Henri van Eelen

SPECIFICATIONS

Dimensions	13.98 x 4.43 x 1,05 / 3.00 (m)	Builder	Allures
Built	2016	Cabins	2
Material	Aluminium	Berths	5
Engine(s)	1 x Volvo Penta D2-75 diesel	Hp/Kw	75.00 (hp), 55.20 (kw)
Asking price	sold (VAT)	Lying	at sales office

CONTACT

Sales office	De Valk Hindeloopen B.V.	Telephone	+31 514 52 40 00
Address	Oosterstrand 1 8713 JS Hindeloopen NL	E-mail	hindeloopen@devalk.nl

DISCLAIMER

These particulars are given in good faith as supplied but cannot be guaranteed.



ALLURES 45 CENTERBOARD

GENERAL

Model	ALLURES 45 CENTERBOARD
Type	sailing yacht
LOA (m)	13,98
LWL (m)	12,35
Beam (m)	4,43
Draft (m)	3,00
Draft min (m)	1,05
Year built	2016
Launched	July 2016
Builder	Allures
Country	France
Designer	Berret Racoupeau / Franck Darnet
Displacement (t)	12,6
CE norm	A
Hull material	aluminium
Hull colour	grey
Hull shape	round-bilged
Keel type	centreboard
Superstructure material	GRP
Deck material	aluminium
Deck finish	synthetic teak Euroteak
Cockpit deck finish	synthetic teak Euroteak
Antifouling (year)	2022
Dorades	2
Window frame	aluminium
Window material	perspex
Deckhatch	Salon 2, Front cabin 3
Portholes	aluminium 12
Insulation	foam Above waterline
Radar arch	yes



ALLURES 45 CENTERBOARD

Fuel tank (litre)	aluminium 550
Level indicator (fuel tank)	yes
Freshwater tank (litre)	polyethylene 440
Level indicator (freshwater)	yes
Blackwater tank (litre)	40
Blackwater tank extraction	deck extraction + uw line
Wheel steering	rack & pinion Direct drive on double pedestal
Emergency tiller	yes
Extra info	Outboard bracket in aft locker
Extra info	Led Lights throughout

ACCOMMODATION

Cabins	2
Berths	5
Interior	cherry
Layout	Two cabins with technical room
Floor	parquet
Open cockpit	yes
Saloon	yes
Headroom saloon (m)	2,05
Heating	diesel ducted hot air Webasto Air Top evo 5500 with 4 exhausts
Navigation center	yes
Chart table	yes
Aft Cabin	yes
Sliding door to cockpit	yes
Galley	yes
Countertop	Duropol Composite
Sink	stainless steel Double
Cooker	calor gas 3 burner
Oven	yes
Fridge	Stainless 144 L double drawer



ALLURES 45 CENTERBOARD

Water pressure system	electrical
Owners cabin	French bed
Bed length (m)	2,05 x 1,40
Wardrobe	hanging/drawers/shelves
Bathroom	separate
Toilet	separate
Toilet system	electric
Wash basin	in the bathroom
Shower	separate
Guest cabin 1	double bed
Bed length (m)	2,00 x 1,40
Wardrobe	hanging and shelves
Bathroom	shared
Toilet	shared
Toilet system	electric
Wash basin	in the bathroom
Shower	shared
Guest cabin 2	Workshop with pipe berth
Bed length (m)	2,00 x 0,70
Washing machine	Soba compact 220 V in workshop

MACHINERY

No of engines	1
Make	Volvo Penta
Type	D2-75
HP	75
kW	55.20
Fuel	diesel
Maximum speed (kn)	8,2
Cruising speed (kn)	6,5
Consumption (l/hr)	3



ALLURES 45 CENTERBOARD

Engine hours	1500
Engine cooling system	freshwater heat exchanger
Drive	sail-drive
Engine controls	bowden cable Dual
Bowthruster	electric Tunnel
Propeller type	feathering JPROP PROPELLER
Propeller blades	3-BLADES 19"
Manual bilge pump	yes
Electric bilge pump	yes
Bilge alarm	yes
Electrical installation	12 V DC and 220 V AC with additional sockets
Generator	wet exhaust Fisher Panda 4000 FC 220V/50 Hz in sound box 3,8 kW
Running hours generator	165 (1-8-2022)
Batteries	yes
Start battery	yes
Service battery	4 x 12V AGM total 432 AH 12 V
Generator battery	yes
Battery monitor	Touch screen with 300 A shunt
Battery charger/inverter	Victron Energie Quattro 3000W 120A 12V
Solar panel	280W-ON ARCH INCLUDING 30A MPPT CHARGE CONTROLLER
Shorepower	with cable
Insulation transformer	3600 W
Watermaker	yes
Extra info	RACCOR SWITCHABLE DOUBLE FUEL PRE-FILTER

NAVIGATION

Compass	One on each pedestal
Electric compass	Gyro RC42N
Multi control display	B & G 7" Zeus 2 display on each pedestal
Depth sounder	B & G DST800



ALLURES 45 CENTERBOARD

Log	B & G DST800
Windset	B & G
Repeater	B & G
VHF	V50
VHF handheld	H50
Autopilot	B & G AC 42 N with Jefra DU-TS8-12 drive
Rudder angle indicator	B & G
Radar/GPS/plotter	B & G with 12 " Zeus 2 display
PC connection	NMEA I/O
Wifi antenna	Wifi/4G Webboat & B & G Broadband radom aerial
Electronic chart(s)	yes
AIS transceiver	B & G class B NAIS-400L
EPIRB	yes
Navigation lights	yes

EQUIPMENT

Sprayhood with grab rail	yes
Cockpit cover	yes
Bimini	yes
Cockpit table	Drop leaf custom made
Bathing platform	yes
Boarding ladder	yes
Deck shower	yes
Anchor	Rocna 25 Kg
Anchor chain	80 M 10 mm galvanized
Anchor 2	Fortress FX 16 Aluminium auxiliary anchor with line/chain
Windlass	electrical Lewmar
Sea railing	yes
Grab rail (superstructure)	yes
Life raft	container Plastimo Cruiser 4 ORC redingsvlot
Life raft (pers)	4



ALLURES 45 CENTERBOARD

Last life raft survey	2016, and needs service
Danbuoy	Safety sling
Radar reflector	yes
Fenders	6 (with sock) and one ballfender and fenderstep, Kaybeam
Mooring lines	4 x long 2 x short
Spare parts	Some
Tools	Some
Radio-cd player	In salon
Cockpit speakers	Switchable with salon
Speakers in salon	80 W
Fire extinguisher	yes
Extra info	50 mtr. 20 mm polyamide towline
Extra info	2 neuring lijnen

RIGGING

Rigging	cutter
Standing rigging	wire
Material mast	aluminium
Spreaders	Deck stepped with wept aft spreaders
Mainsail cover	Lazy bag system
Battcars	yes
Fully battened mainsail	Hydranet with spare halyard 55 m2
Cutterstay	With running backstays
Genoa I	Hydranet 45 m2
Genoa furler	Manual
Cutter furler	Manual
Staysail	Hydranet
Staysail furler	Manual
Reefing System	slabreefing
Boomvang	tackle And break
Primary sheet winch	yes



ALLURES 45 CENTERBOARD

Secondary sheet winch

2 x EVO 45 ST manual

Genoa sheetwinches

2 x EVO 50 ST electric

Halyard winches

3 x all EVO 40 ST, ow 1 x electric and one at the mast



ALLURES 45 CENTERBOARD



ALLURES 45 CENTERBOARD



ALLURES 45 CENTERBOARD



ALLURES 45 CENTERBOARD



ALLURES 45 CENTERBOARD



ALLURES 45 CENTERBOARD



ALLURES 45 CENTERBOARD



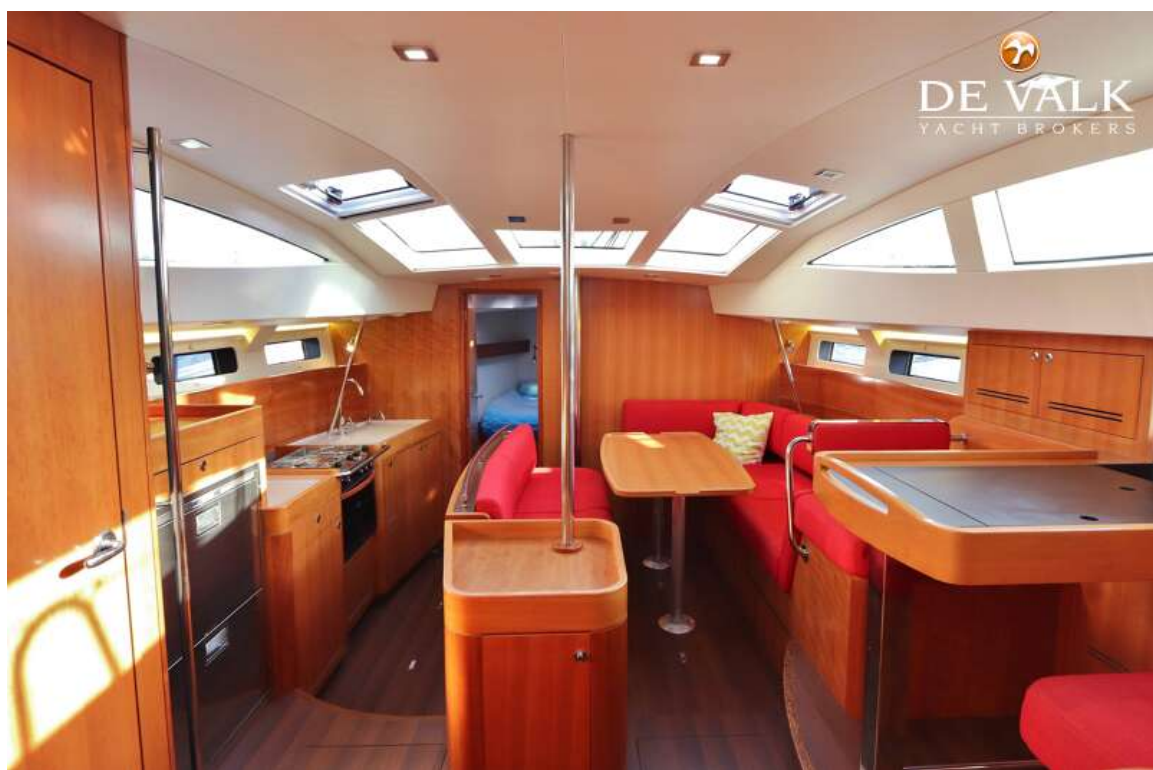
ALLURES 45 CENTERBOARD



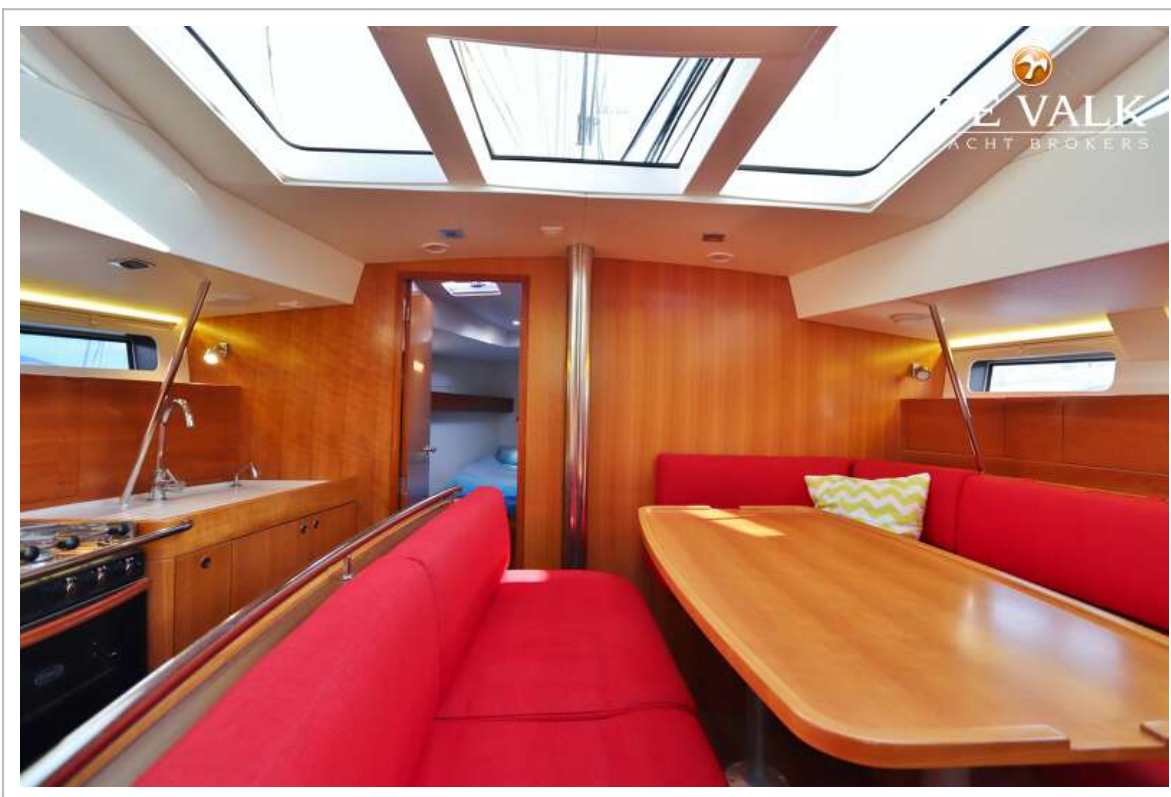
ALLURES 45 CENTERBOARD



ALLURES 45 CENTERBOARD



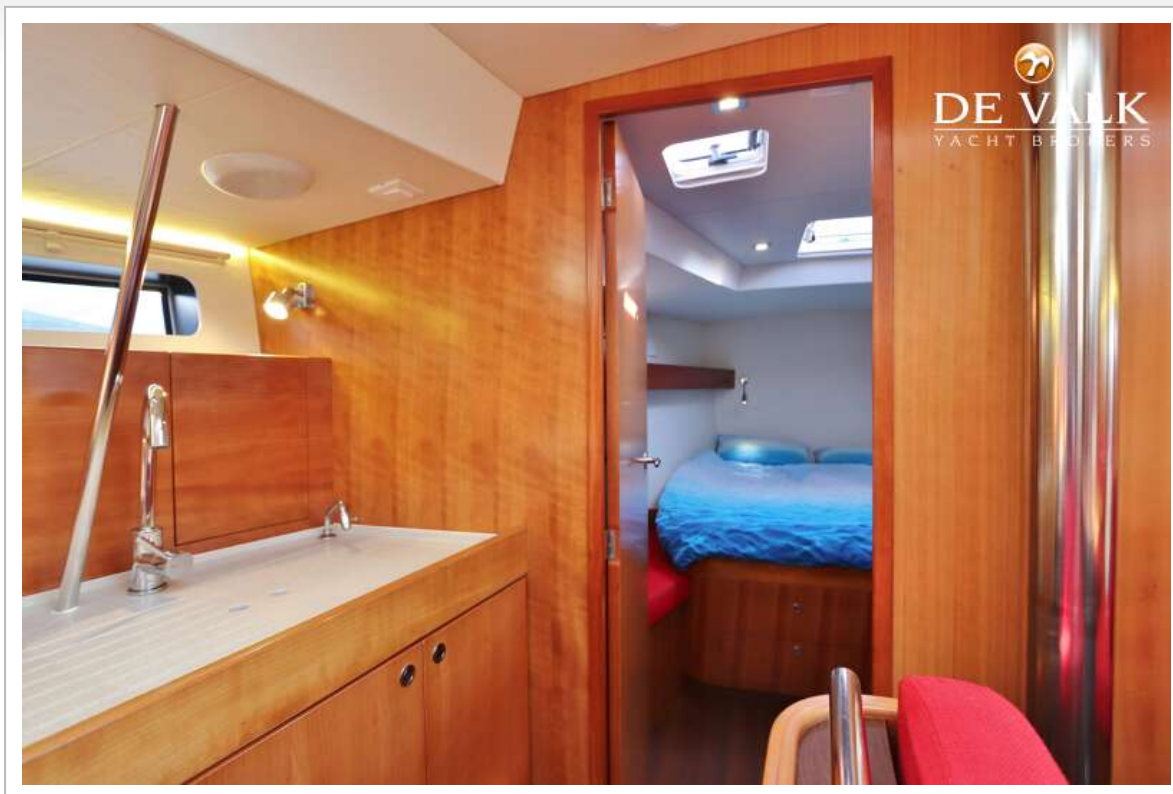
ALLURES 45 CENTERBOARD



ALLURES 45 CENTERBOARD



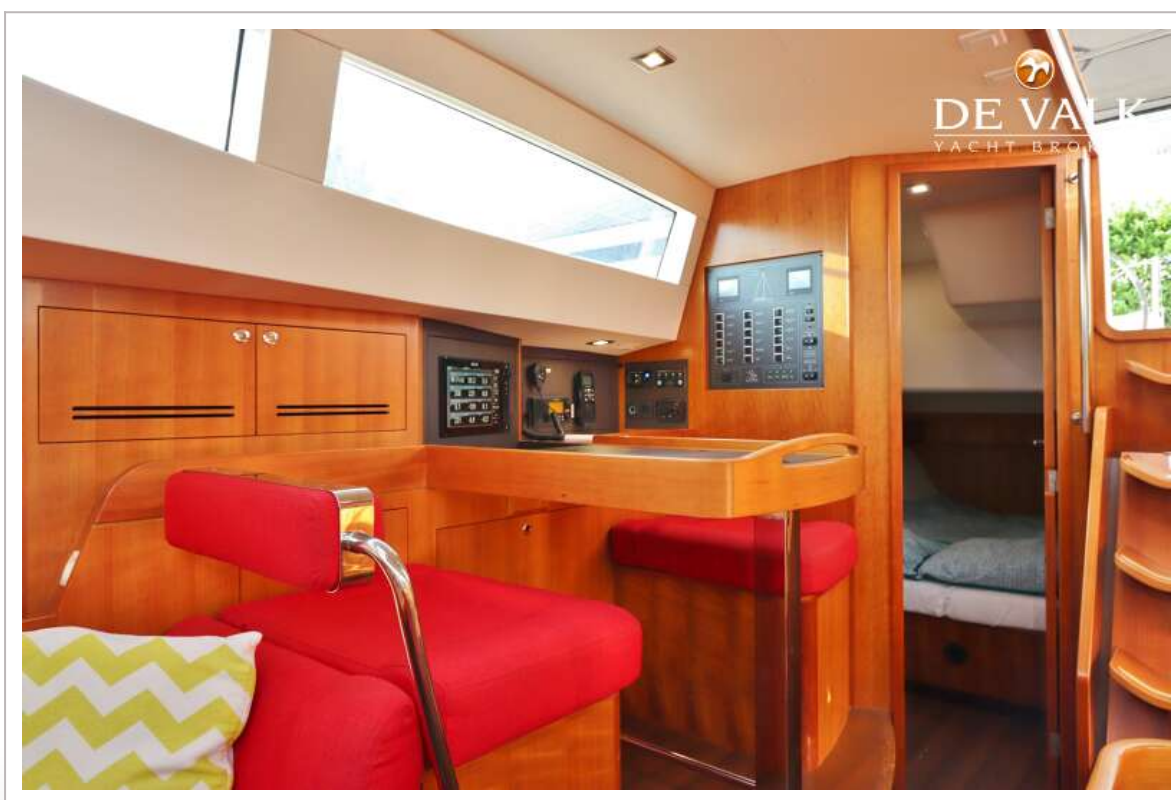
ALLURES 45 CENTERBOARD



ALLURES 45 CENTERBOARD



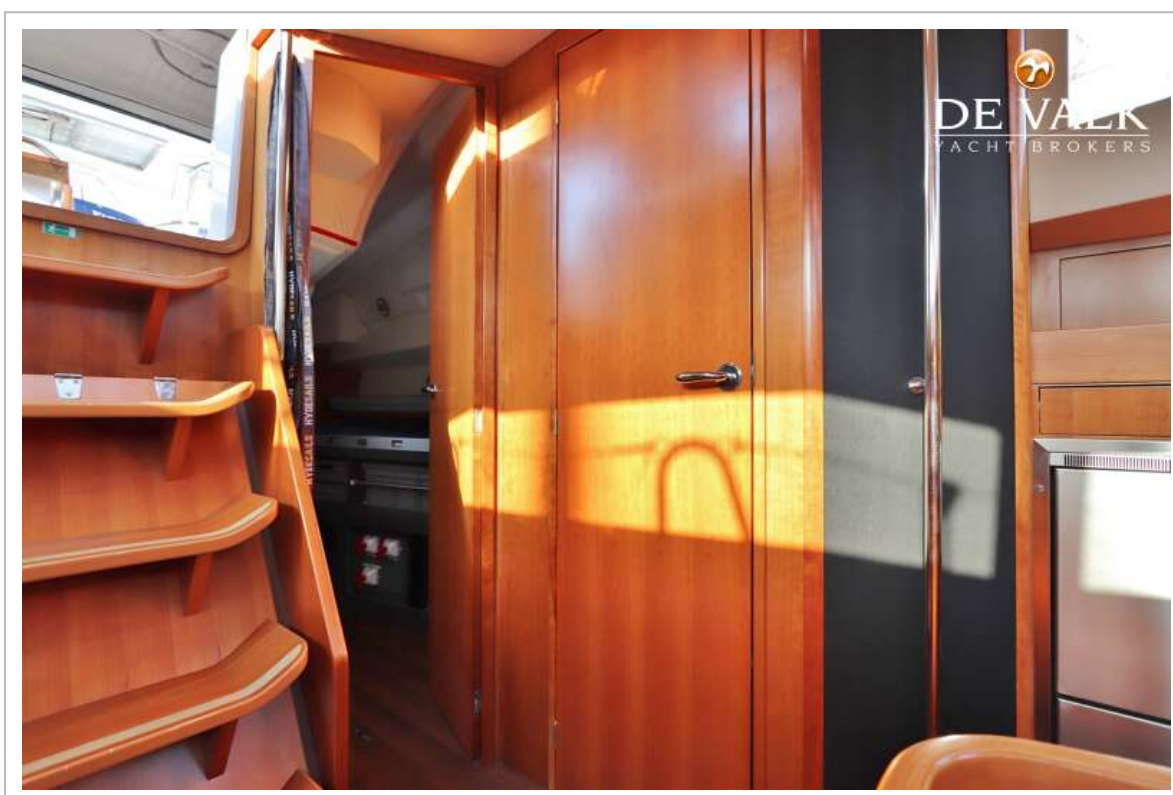
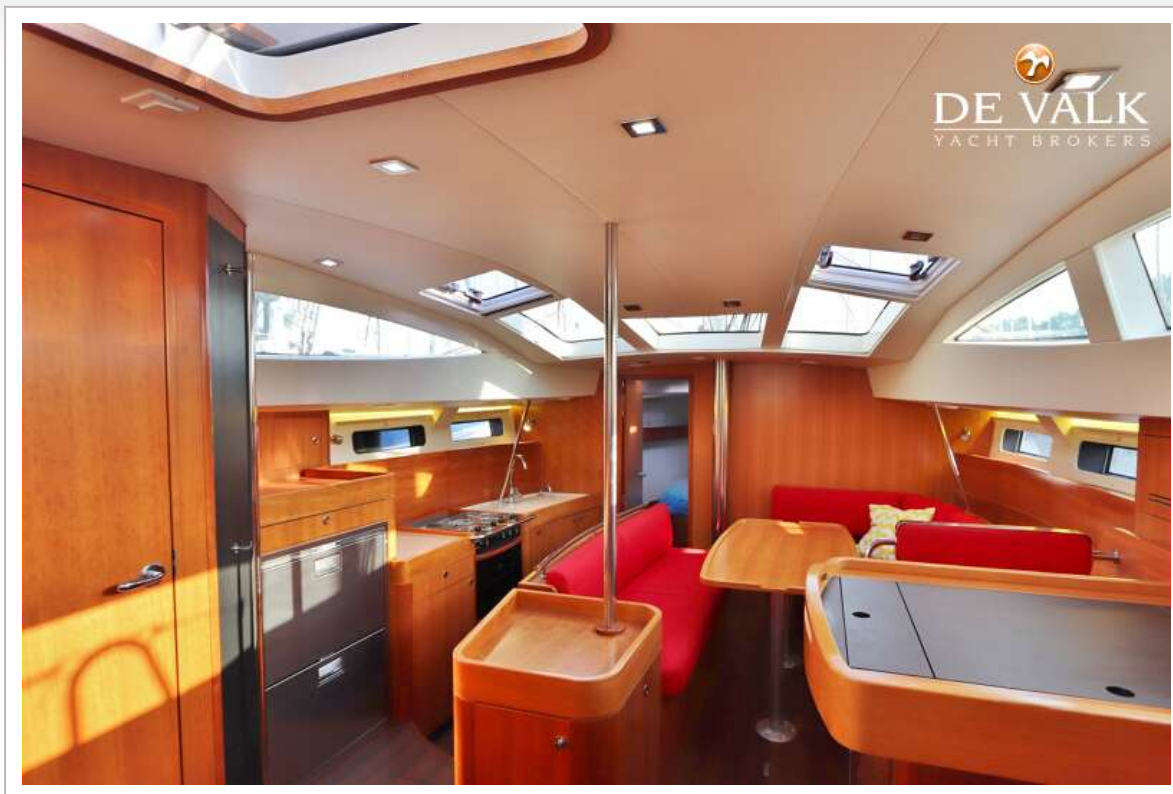
ALLURES 45 CENTERBOARD



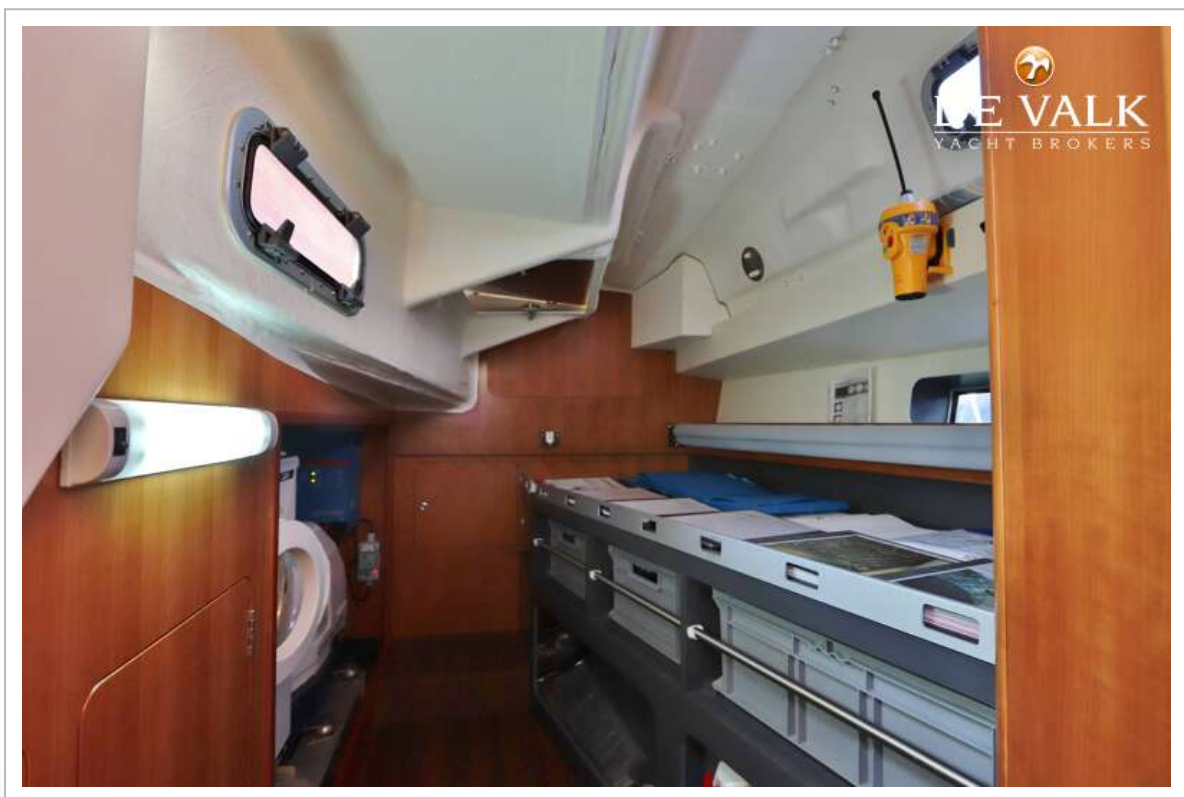
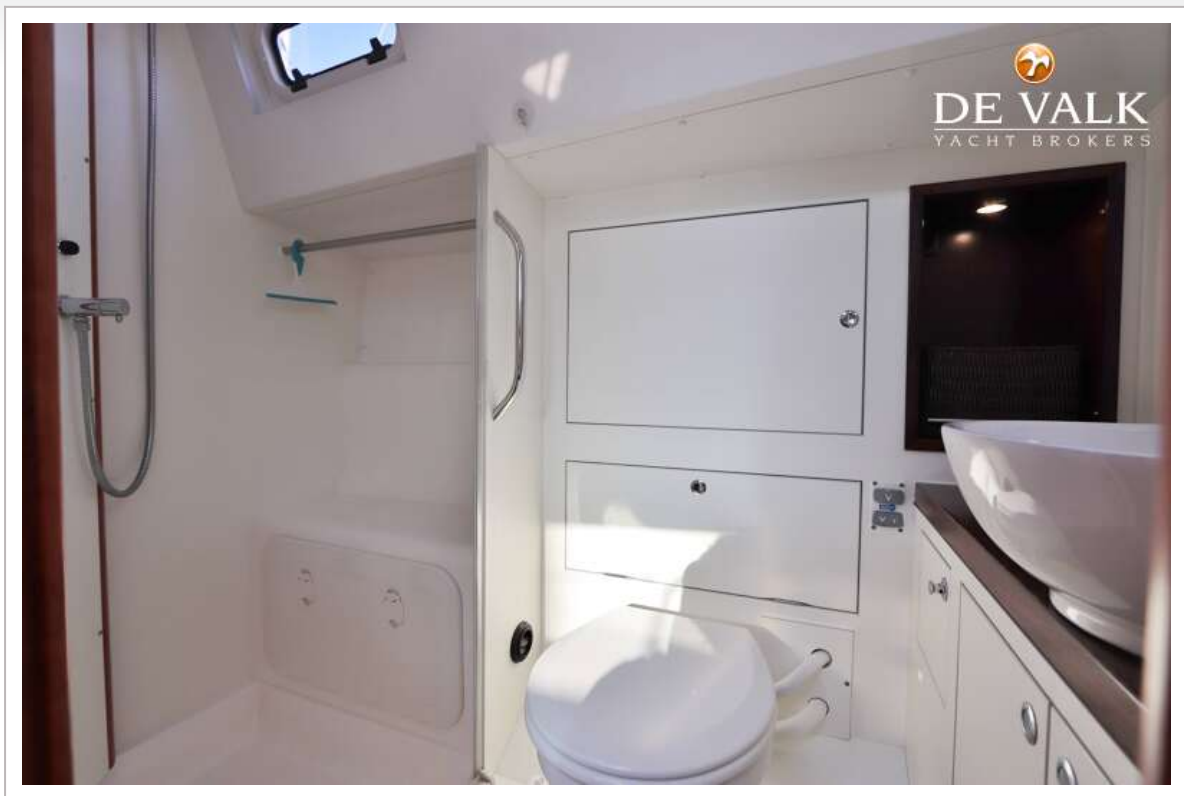
ALLURES 45 CENTERBOARD



ALLURES 45 CENTERBOARD



ALLURES 45 CENTERBOARD



ALLURES 45 CENTERBOARD

