



SUNSEEKER MANHATTAN 63



SUNSEEKER MANHATTAN 63

BROKER'S COMMENTS

This Sunseeker 63 manhattan is a one owner boat since new and designed with a modern and fresh interior for the high demanding owner appreciating luxury and comfort. The Sunseeker Manhattan 63 is a truly remarkable sought after Fly-bridge yacht with all the comfort from home while enjoying your free time enroute or at anchor. Her spacious saloon and master cabin provide ample space to socialize with friends or read a book in privacy. If you are looking for a 60ft plus fly-bridge yacht this Sunseeker Manhattan 63 must be on your shortlist.

Hans Visser

SPECIFICATIONS

Dimensions	21.07 x 5.13 x 1.58 (m)	Builder	Sunseeker International
Built	2011	Cabins	4
Material	GRP	Berths	8
Engine(s)	2 x MAN 1000 CRM D2868LE423 diesel	Hp/Kw	2 x 1,000.00 (hp), 736.00 (kw)
Asking price	£ 999.000 (VAT Not paid)	Lying	elsewhere / Not at sales office

CONTACT

Sales office	De Valk Sneek	Telephone	+31 (0)515 42 80 30
Address	Zwolsmanweg 7 8606 KC Sneek NL	E-mail	sneek@devalk.nl

DISCLAIMER

These particulars are given in good faith as supplied but cannot be guaranteed.



SUNSEEKER MANHATTAN 63

GENERAL

Model	SUNSEEKER MANHATTAN 63
Type	motor yacht
LOA (m)	21,07
Beam (m)	5,13
Draft (m)	1,58
Year built	2011
Builder	Sunseeker International
Country	United Kingdom
Designer	Sunseeker
Displacement (t)	35
CE norm	B
Hull material	GRP
Hull colour	blue
Hull shape	deep-V
Superstructure material	GRP
Rubbing strake	stainless steel
Deck material	GRP
Deck finish	teak
Superstructure deck finish	teak New on Flybridge 2022
Cockpit deck finish	teak New 2022
Antifouling (year)	2022
Window frame	aluminium
Window material	glass
Deckhatch	1
Portholes	aluminium 6
Flybridge	yes
Flybridge cover	yes
Flybridge suncover	yes
Radar arch	yes
Fuel tank (litre)	3500



Level indicator (fuel tank)	yes
Freshwater tank (litre)	aluminium 816
Level indicator (freshwater)	yes
Blackwater tank (litre)	136
Level indicator (blackwater)	yes
Blackwater tank extraction	deck extraction + uw line
Wheel steering	hydraulic
Flybridge helm position	hydraulic
Emergency tiller	yes

ACCOMMODATION

Cabins	4
Berths	8
Crew cabin	1
Crew berths	1
Interior	cherry Complete New Indoor and Outdoor Upholstery
Layout	Owner with crew
Floor	parquet Burmese Teak new 2022 in living, dining & stairs
Open cockpit	yes
Aft deck	yes
Pilot house/deck saloon	yes
Headroom saloon (m)	2,00
Sliding roof	yes
Air-conditioning	reverse cycle airco Tropical air conditioning spec in each cabin plus crew area
Dining room	Removable Dining Table
Opening door to aft deck	yes
Galley	yes
Countertop	yes
Sink	stainless steel
Cooker	ceramic 4 zone



SUNSEEKER MANHATTAN 63

Extractor	yes
Microwave/oven combi	yes
Fridge	yes
Freezer	yes
Wine cooler	Vitrofrigo DW180 in stairwell cabinet
Hot water system	220V + engine Boiler
Water pressure system	With city connection
Crockery	For 6
Owners cabin	French bed
Bed length (m)	2,05 x 1,50
Wardrobe	walk-in closet
Bathroom	en suite
Toilet	en suite
Toilet system	electric
Wash basin	in the bathroom
Shower	en suite Hansgrohe Pharo Comfort Plus shower tower upgrade with body jets
Extra info	B&O Television and Surround System plus Mini bar fridge
Guest cabin 1	French bed VIP
Bed length (m)	2,00 x 1,40
Wardrobe	hanging/drawers/shelves
Bathroom	en suite
Toilet	en suite
Toilet system	electric
Wash basin	in the bathroom
Shower	en suite
Extra info	Fusion Radio Tuner linked to 19" Samsung Cabin TV + Surround
Guest cabin 2	twin single
Bed length (m)	2,00 x 0,70
Wardrobe	hanging and shelves
Bathroom	en suite
Toilet	en suite



SUNSEEKER MANHATTAN 63

Toilet system	electric
Wash basin	in the bathroom
Shower	en suite
Extra info	The bathroom is shared with the Pullman cabin
Guest cabin 3	bunk bed
Bed length (m)	2,00 x 0,65
Wardrobe	hanging
Bathroom	shared
Toilet	shared
Wash basin	in the bathroom
Shower	shared
Extra info	Fusion Radio Tuner linked to 19" Samsung Cabin TV + Speaker
Washing machine/dryer combi	Miele in crew area
Wet bar	Kenyon Marine Electric BBQ Grill with lava coals and fridge
Extra info	Electrically Operated side opening window
Extra info	Special Headboard with 3D effect Suede paneling throughout

MACHINERY

No of engines	2
Make	MAN 1000 CRM
Type	D2868LE423
HP	1000
kW	736
Fuel	diesel
Maximum speed (kn)	30
Cruising speed (kn)	20
Range (nm)	300
Engine hours	935
Engine cooling system	freshwater heat exchanger
Drive	shaft
Shaft seal	yes



Engine controls	electrical
Gearbox	hydraulic V drives
Bowthruster	yes
Propeller type	fixed NAB bronze
Propeller blades	4
Propeller shaft material	stainless steel
Shaft lubrication	water
Manual bilge pump	yes
Electric bilge pump	3 x
Bilge alarm	Fire & Bilge flood Monitoring Alarm – 6 zones
Electrical installation	12 & 24 V DC and 220 V 50 HZ AC Dimmer Switches on interior ligh
Generator	silent separator Onan 19 KW Kohler Marine, model 25EFOZD
Running hours generator	2000
Batteries	yes
Start battery	6 x for both engines 24 V
Service battery	6 x for 24 V
Generator battery	2 x 12 V
Battery monitor	yes
Battery charger	For 12 and 24 V
Inverter	yes
Diode battery combiners	yes
Shorepower	with cable
Stabilizers	Seakeeper M7000A Gyro Stabiliser
Trimtabs	yes
Extra info	Diesel FuelMag Conditioning System FM500 & FM1500

NAVIGATION

Compass	yes
Compass on flybridge	yes
Electric compass	Raymarine



Multi control display	Raymarine
Depth sounder	Raymarine
Log	Raymarine
Repeater	Raymarine
VHF	Dual station
VHF handheld	yes
Autopilot	Raymarine ST8002+ dual station
Rudder angle indicator	yes
Radar	Raymarine E120W Radar / Chartplotter
GPS	Raymarine
Radar/GPS/plotter	Raymarine
Electronic chart(s)	yes
AIS transceiver	Retrofitted
Transmitter	KVH TracPhone FB500 Satellite Phone
Navigation lights	IMCO
Searchlight	Sanshin Twin-beam remote controlled Search Light HR-1012 dual st

EQUIPMENT

Fixed windscreen	yes
Dodger	yes
Bimini	Navy Blue canvas with Stainless steel frame work
Window cover	yes
Cockpit cushions	yes
Cockpit table	Teak folding cockpit table on removable telescopic leg
Cockpit chairs	Four Summit SD 346 Director Chairs
Bathing platform	Hydraulic with new teak (2022)
Boarding ladder	stainless steel Teak steps
Transom door	yes
Gangway	yes
Deck shower	yes



SUNSEEKER MANHATTAN 63

Anchor	Delta
Anchor chain	60 M galvanised
Anchor 2	Extra 30 meters 10mm Anchor Chain
Windlass	electrical Upgraded Lewmar V5GD-24V
Capstan	electrical 24 V
Windlass aft	electrical 2 x Lewmar C3 electric mooring winches
Deck wash	Fresh water Deck Wash with outlets fwd and aft including wah kit
Dinghy	AVON Adventure 4.00 & Two Sunseeker Boat Mats
Sea railing	yes
Grab rail (superstructure)	yes
Railing side opening gates	yes
Pushpit	yes
Pulpit	yes
Life raft	container 8 man Viking life raft
Life raft (pers)	8 man in Stainless frame
Wiper	Pantograph 3 x
Fenders	2 additional Sunseeker Fenders 24x70 cm with Ties
Mooring lines	yes
Spare parts	yes
Tools	yes
Alarm system	Burglar Alarm – Remote controlled microwave alarm system
TV	Bang & Olufsen Multimedia System with TV Lift in salon
TracVision ball	KVH TracVision M7 Satellite TV Receiver
Radio	2.4meter Whip Aerial for FM Radio to match VHF Aerial on arch
Radio-cd player	Fusion Radio Tuner linked to Cabin TV + Speakers
DVD player	yes
iPod connection	HDMI Sockets with PlayStation 3 on each TV
Surround Sound System	Bang & Olufsen in Salon
Cockpit speakers	Fusion incl. on fly bridge
Speakers in salon	Fusion
Speakers in cabin	Fusion
Clock - barometer	yes



SUNSEEKER MANHATTAN 63

Fire extinguisher	yes
Auto extinguisher system	yes
Extra info	Extensive set underwater lights Aqualuma

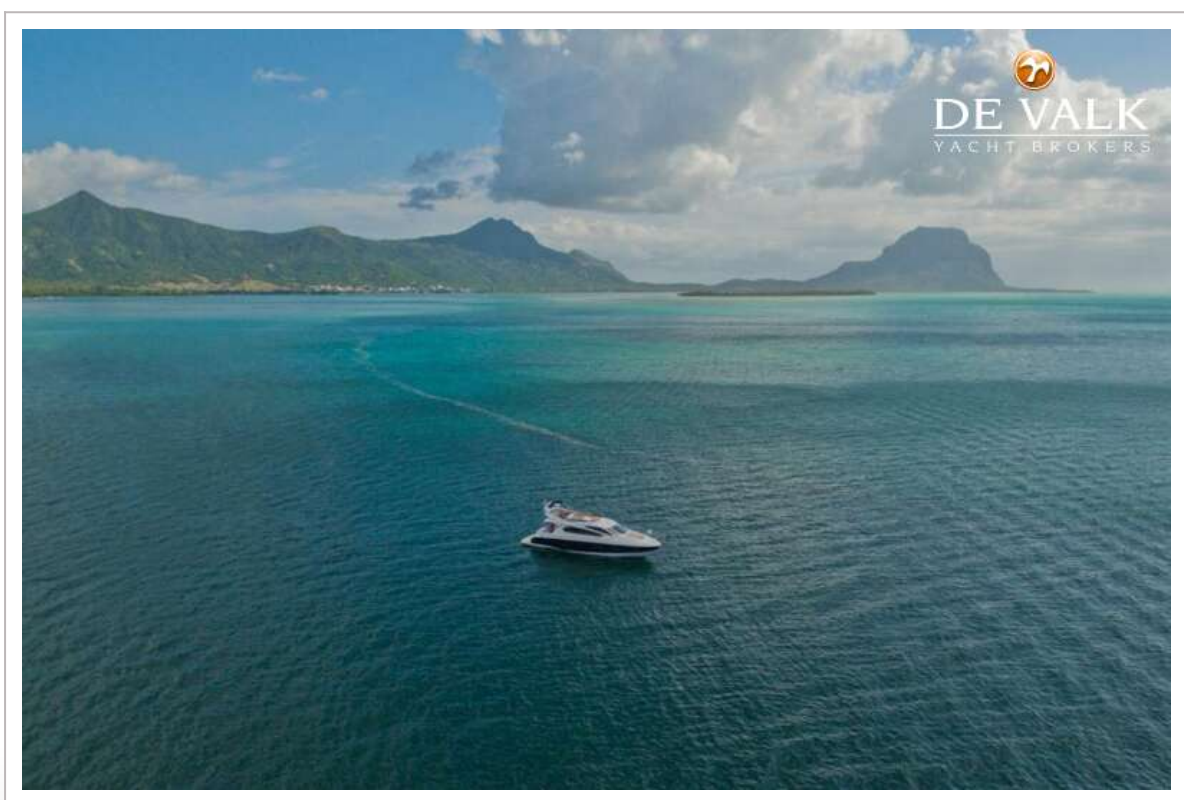


SUNSEEKER MANHATTAN 63



SUNSEEKER MANHATTAN 63

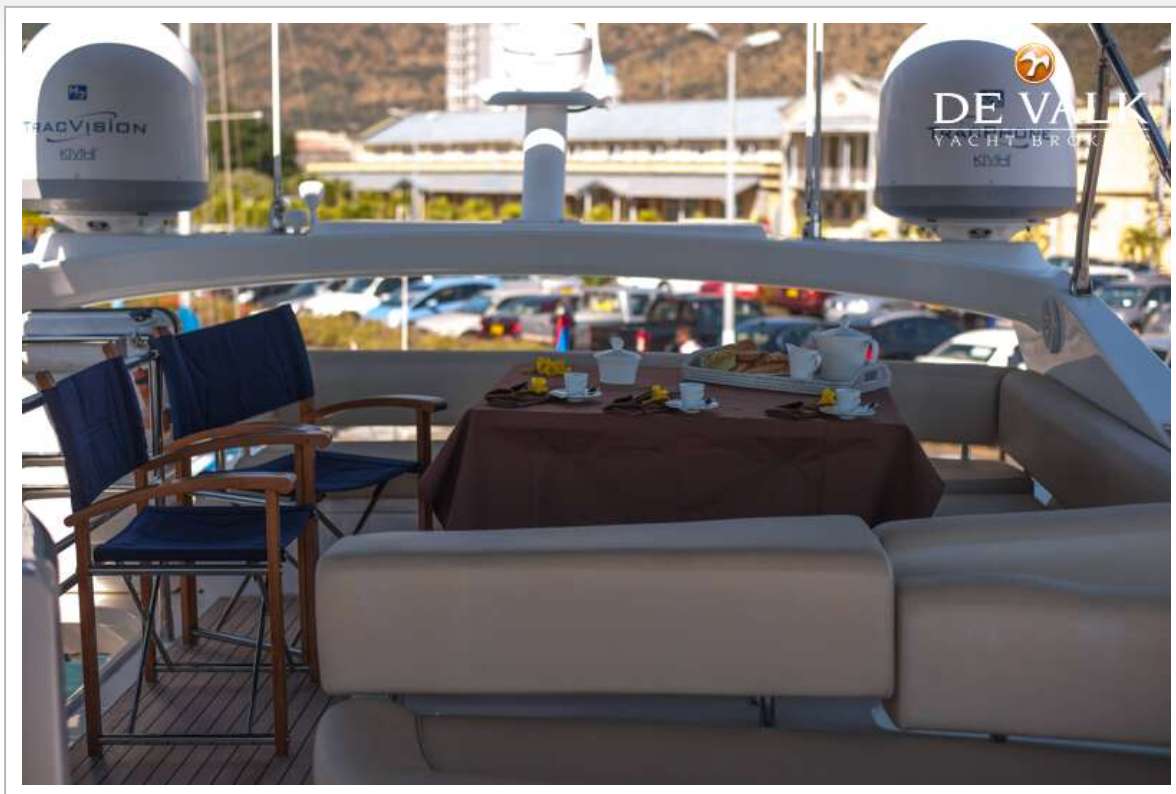




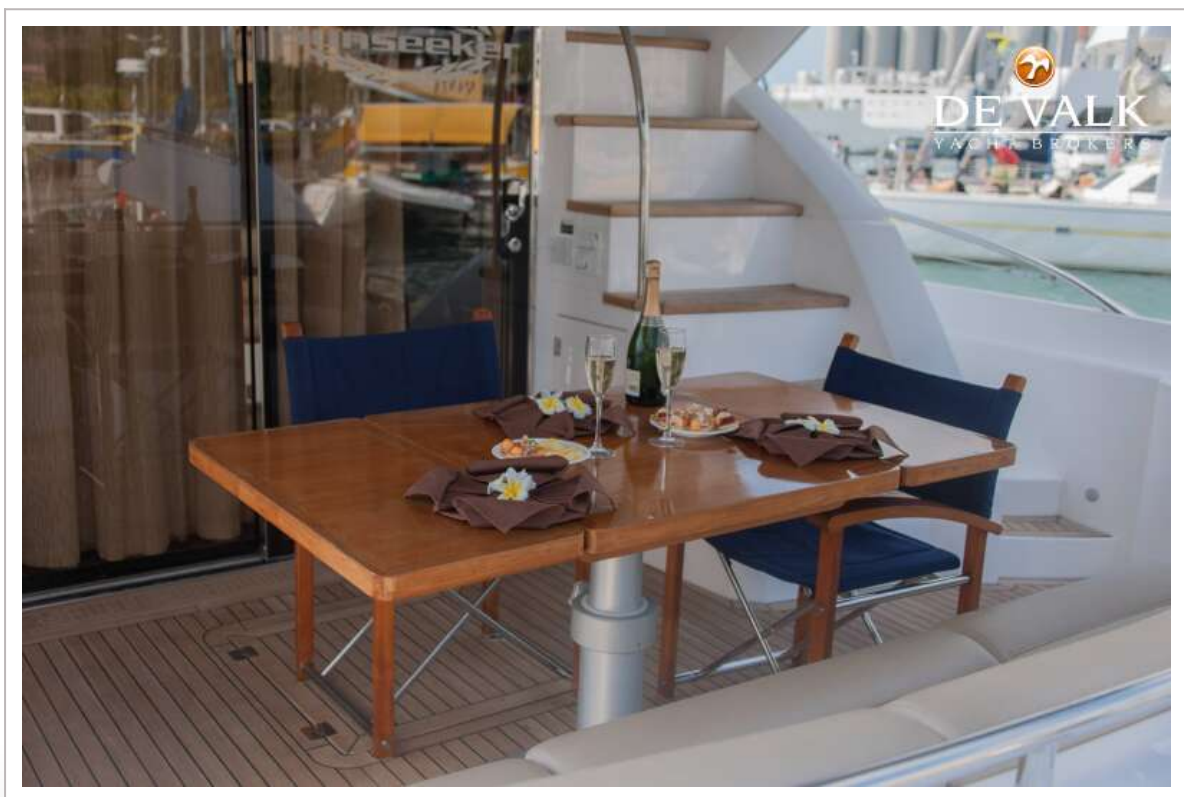
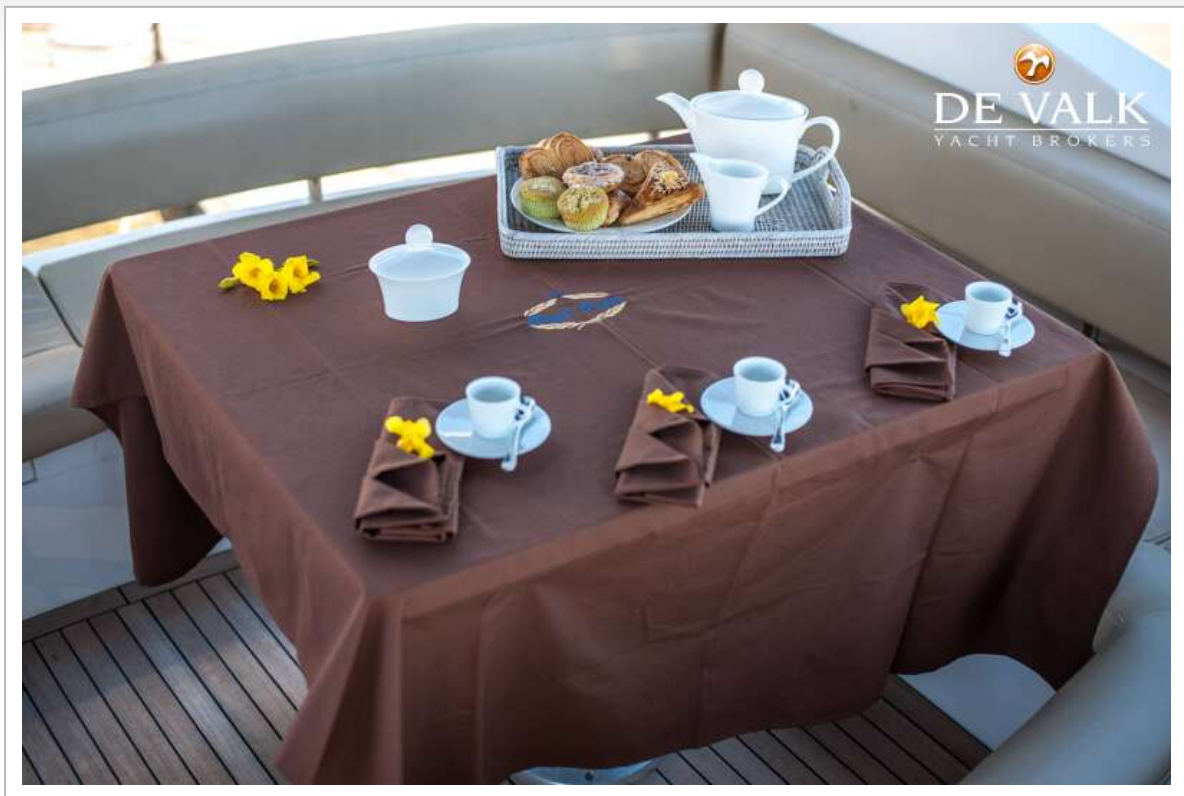
SUNSEEKER MANHATTAN 63



SUNSEEKER MANHATTAN 63



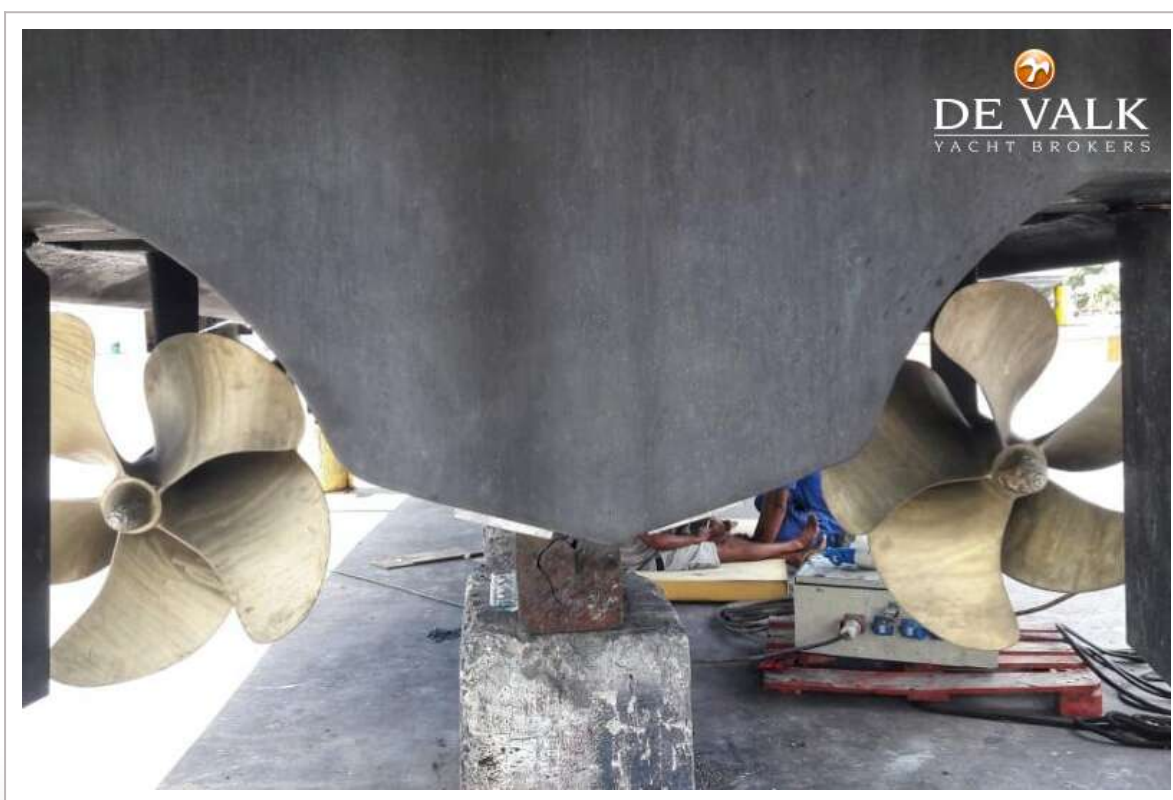
SUNSEEKER MANHATTAN 63



SUNSEEKER MANHATTAN 63

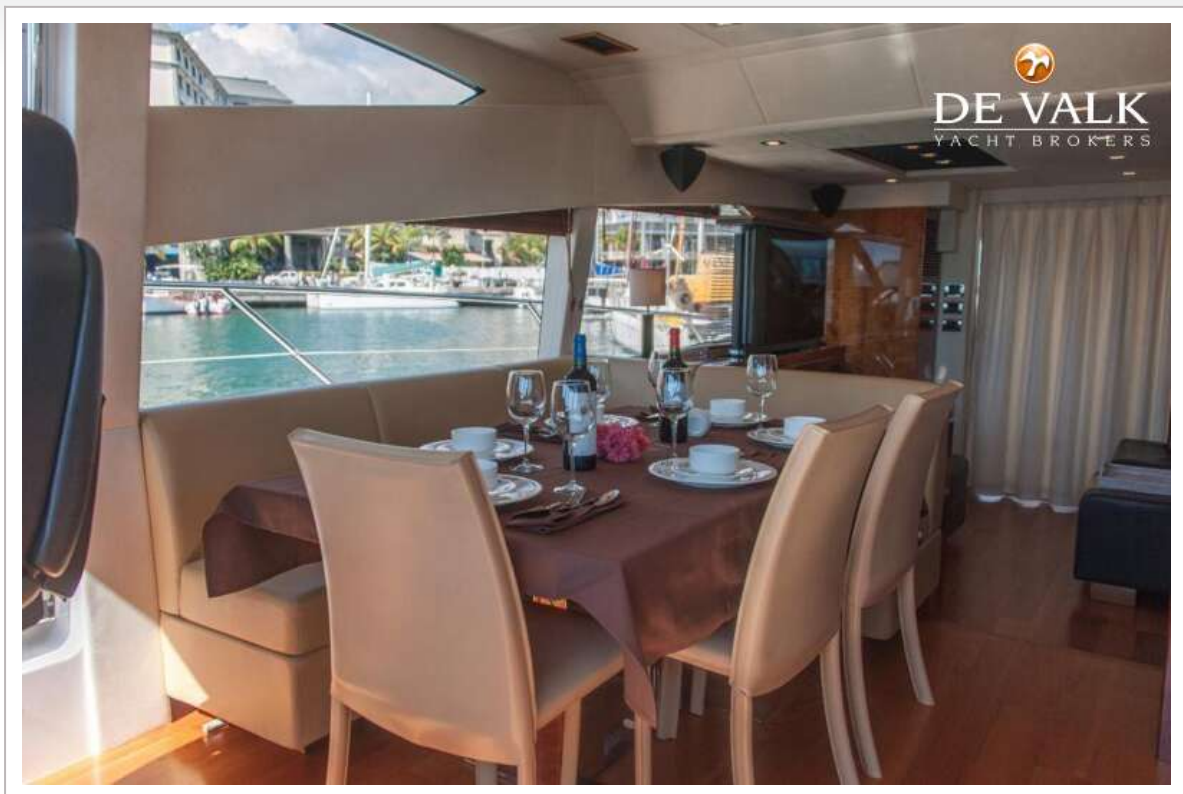


SUNSEEKER MANHATTAN 63



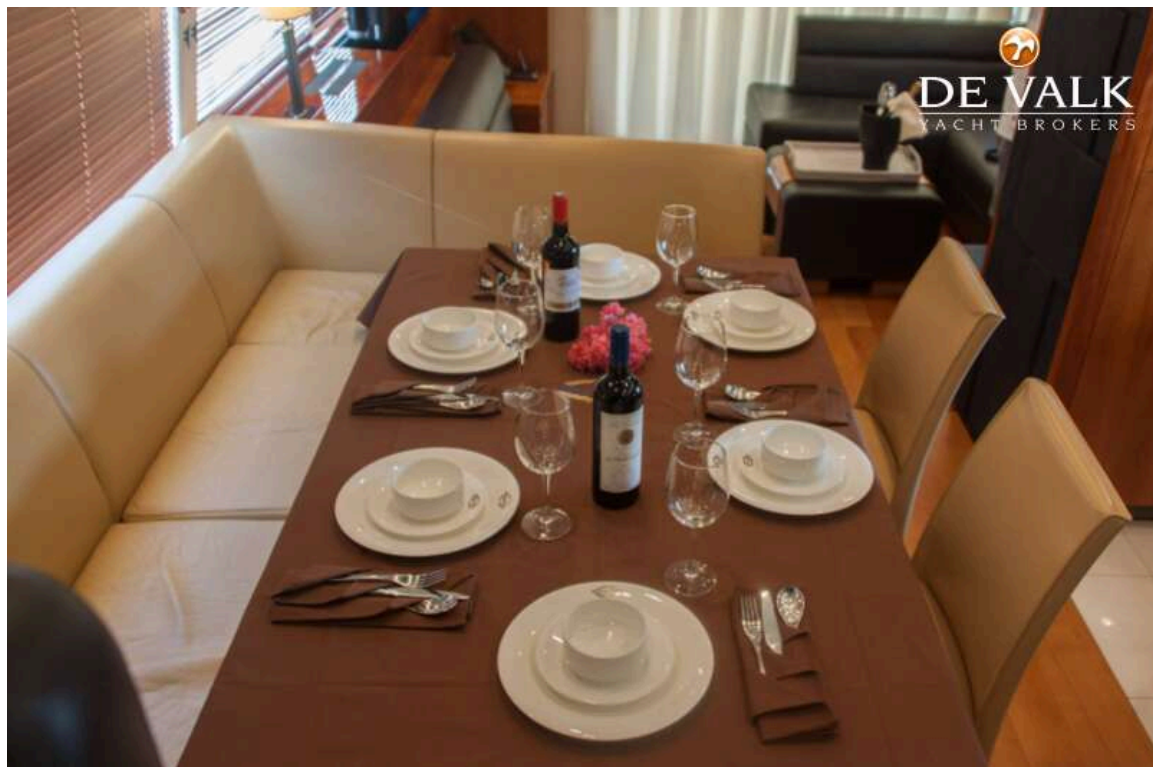


SUNSEEKER MANHATTAN 63

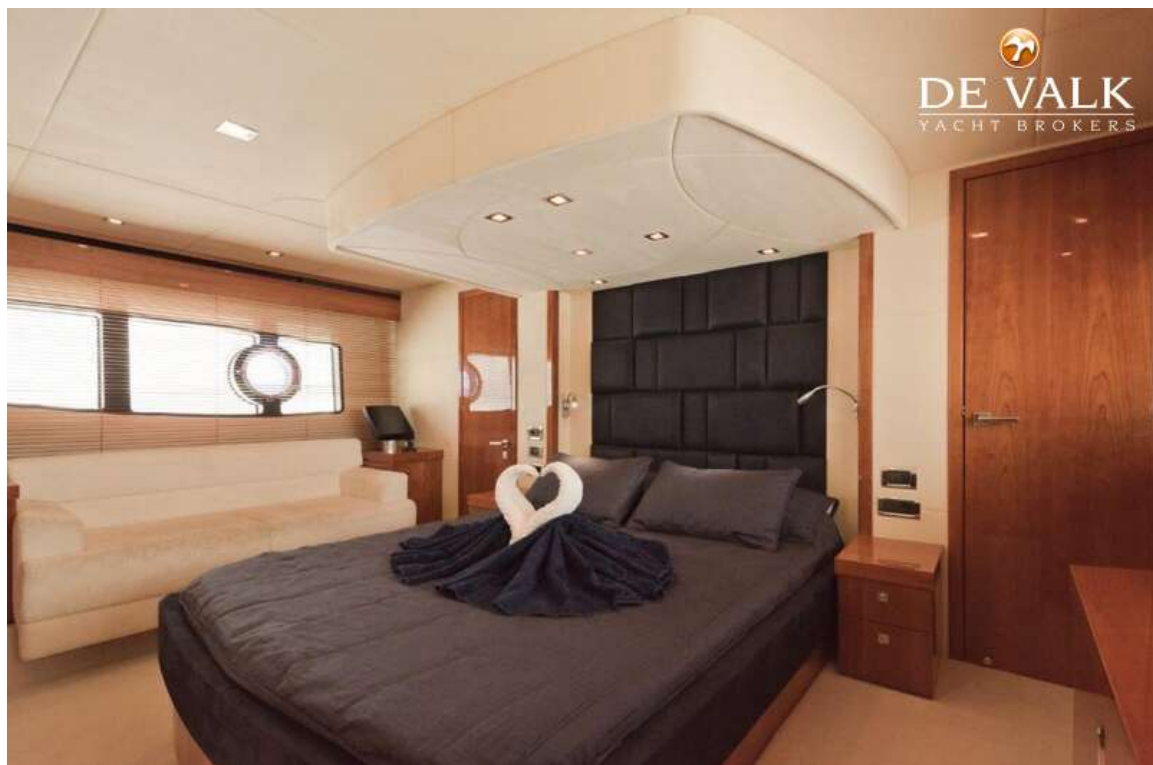
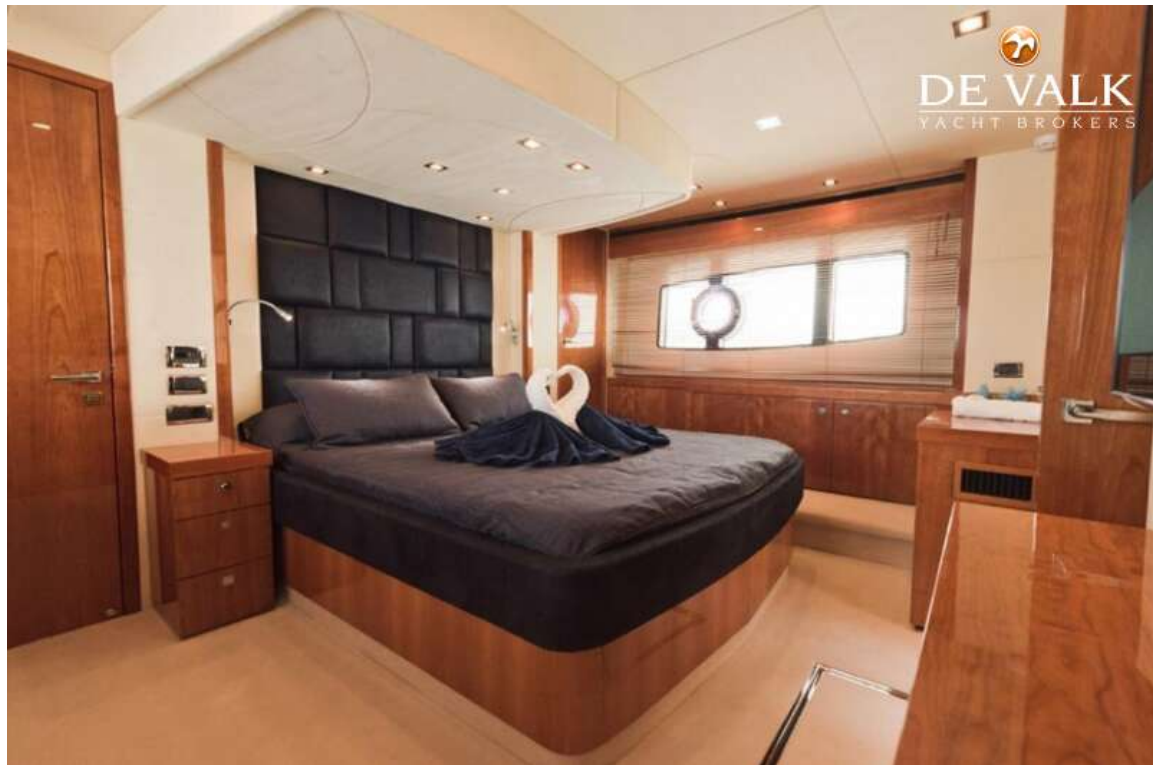




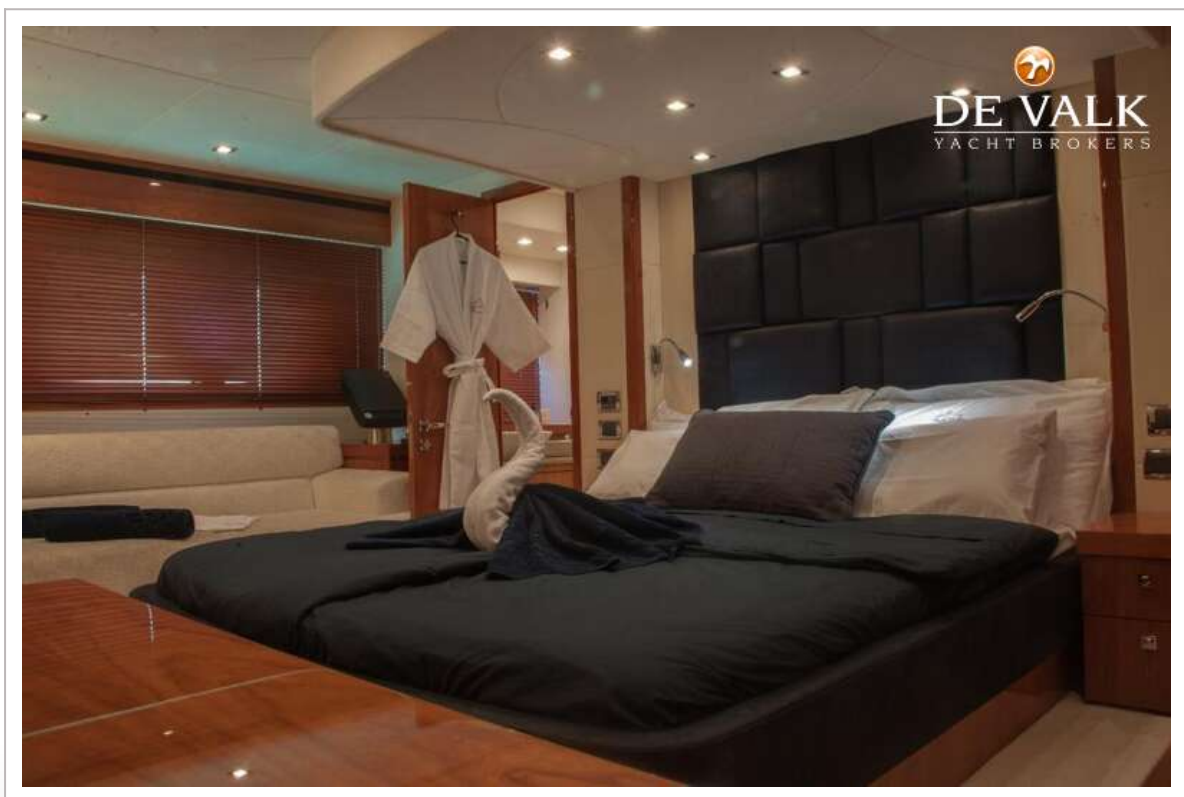
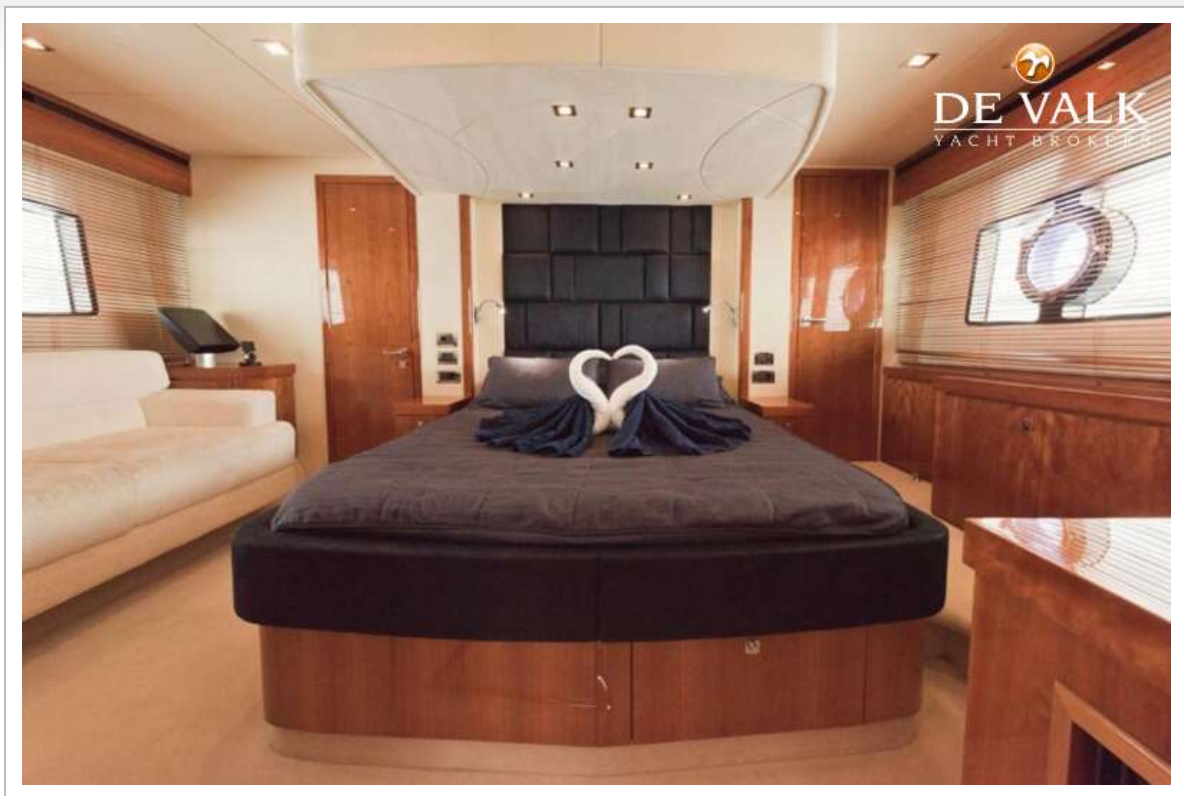
SUNSEEKER MANHATTAN 63



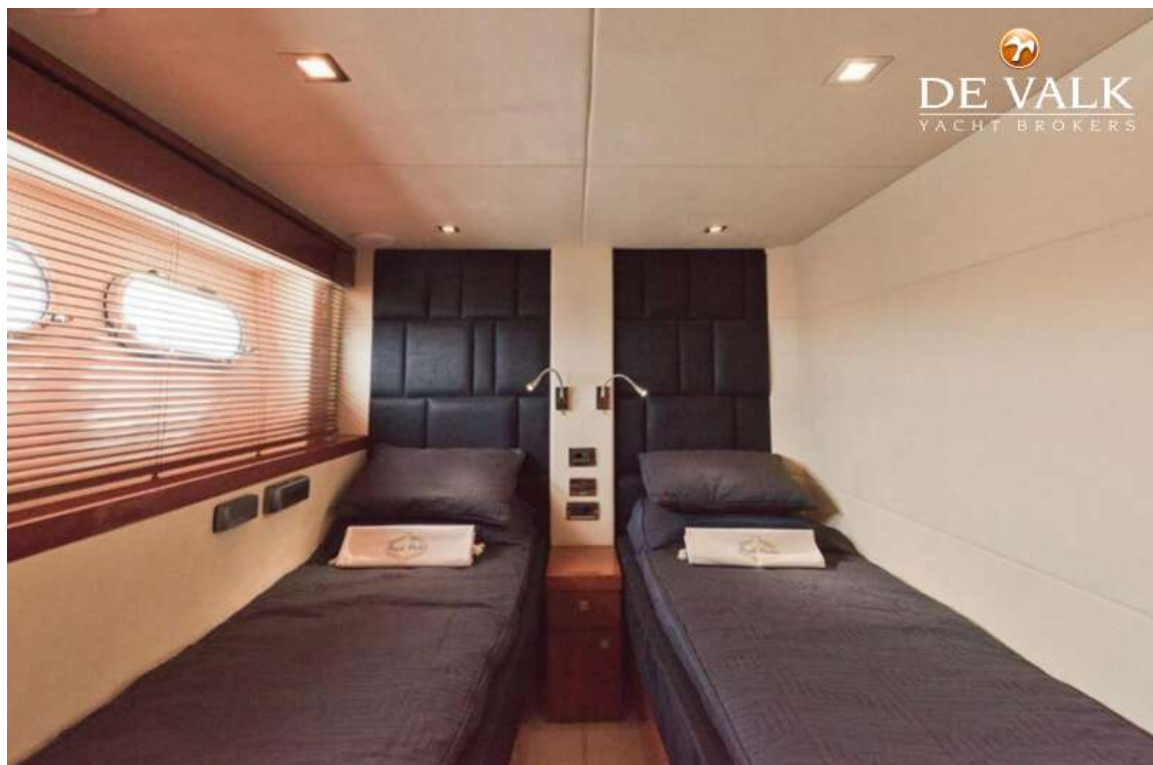
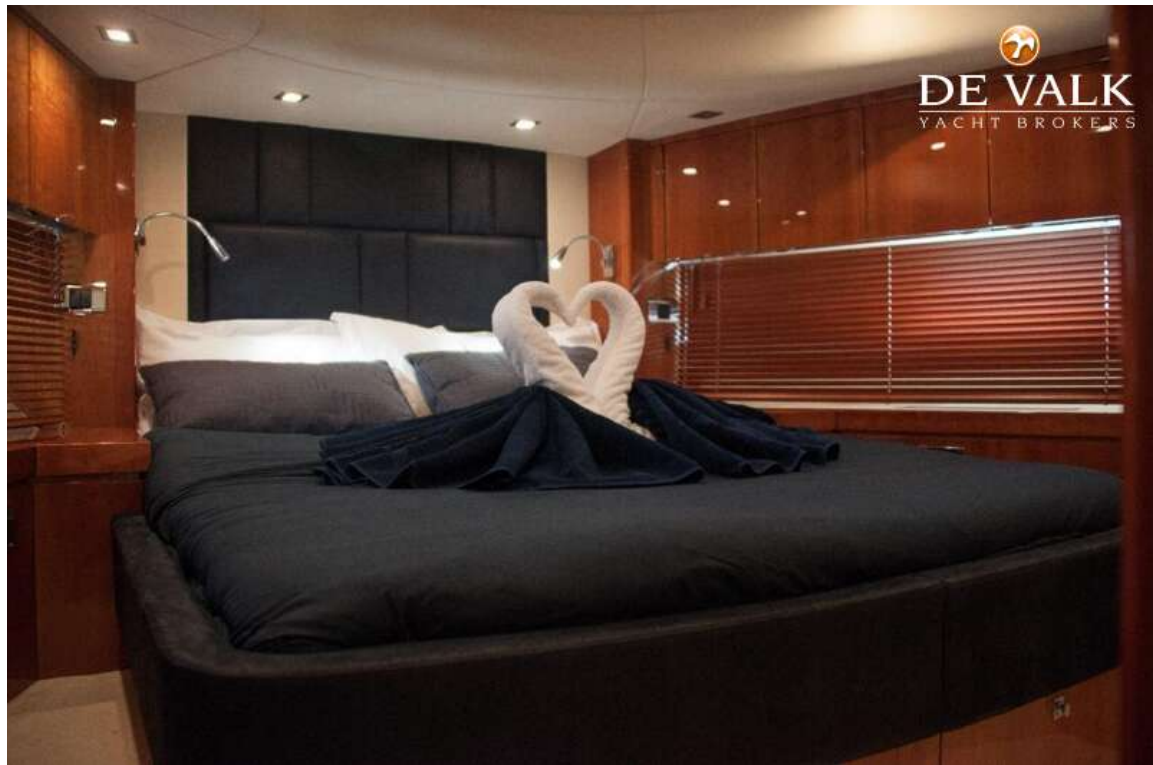
SUNSEEKER MANHATTAN 63



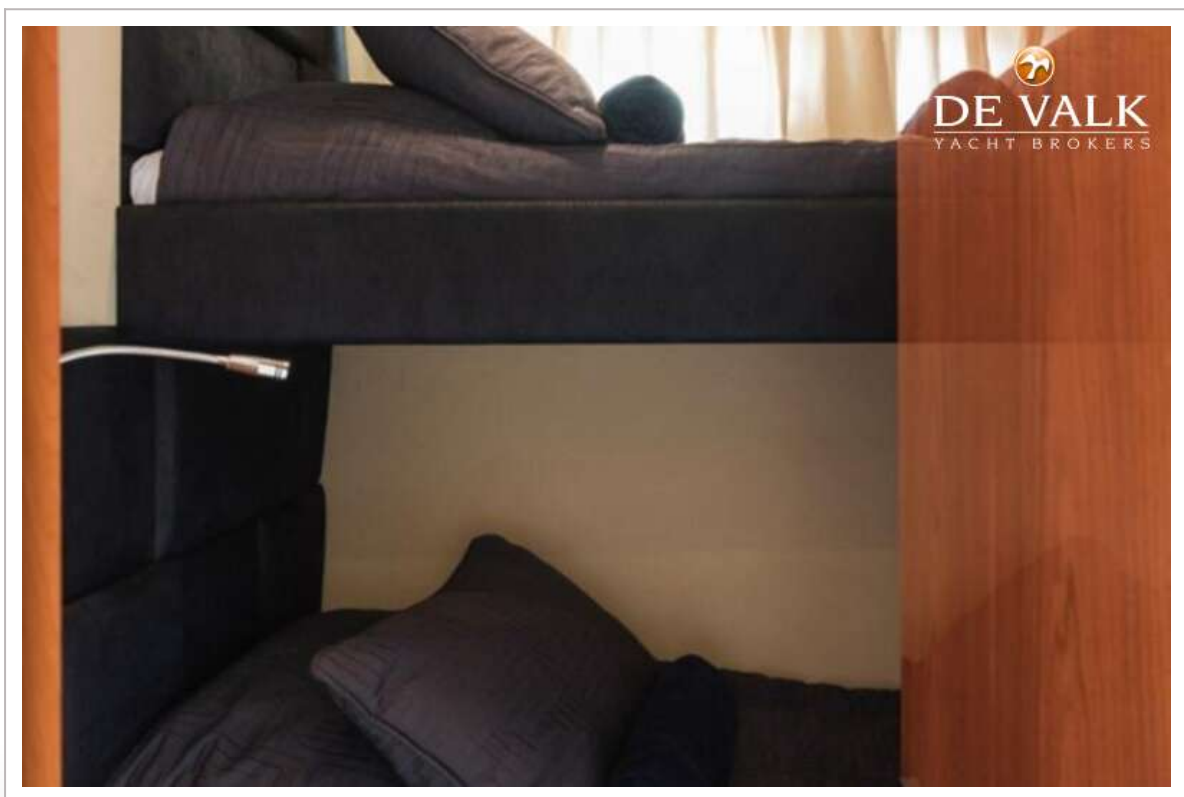
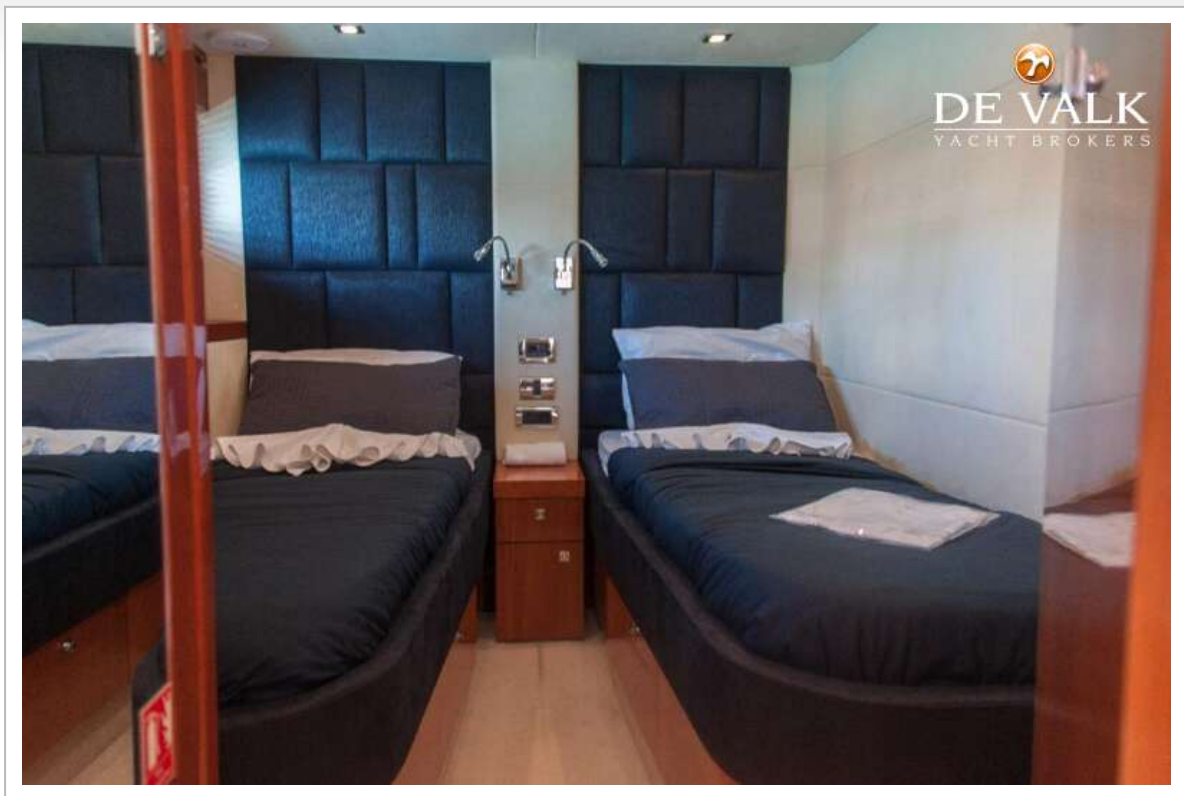
SUNSEEKER MANHATTAN 63



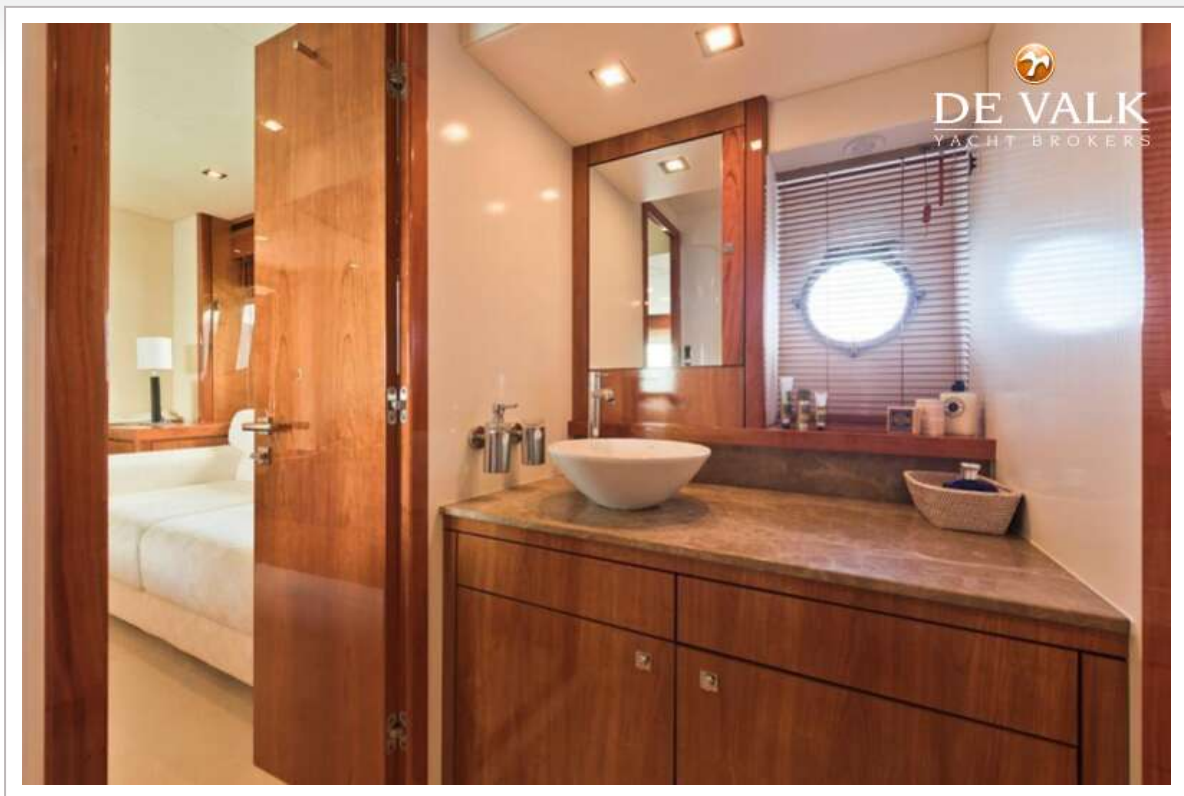
SUNSEEKER MANHATTAN 63

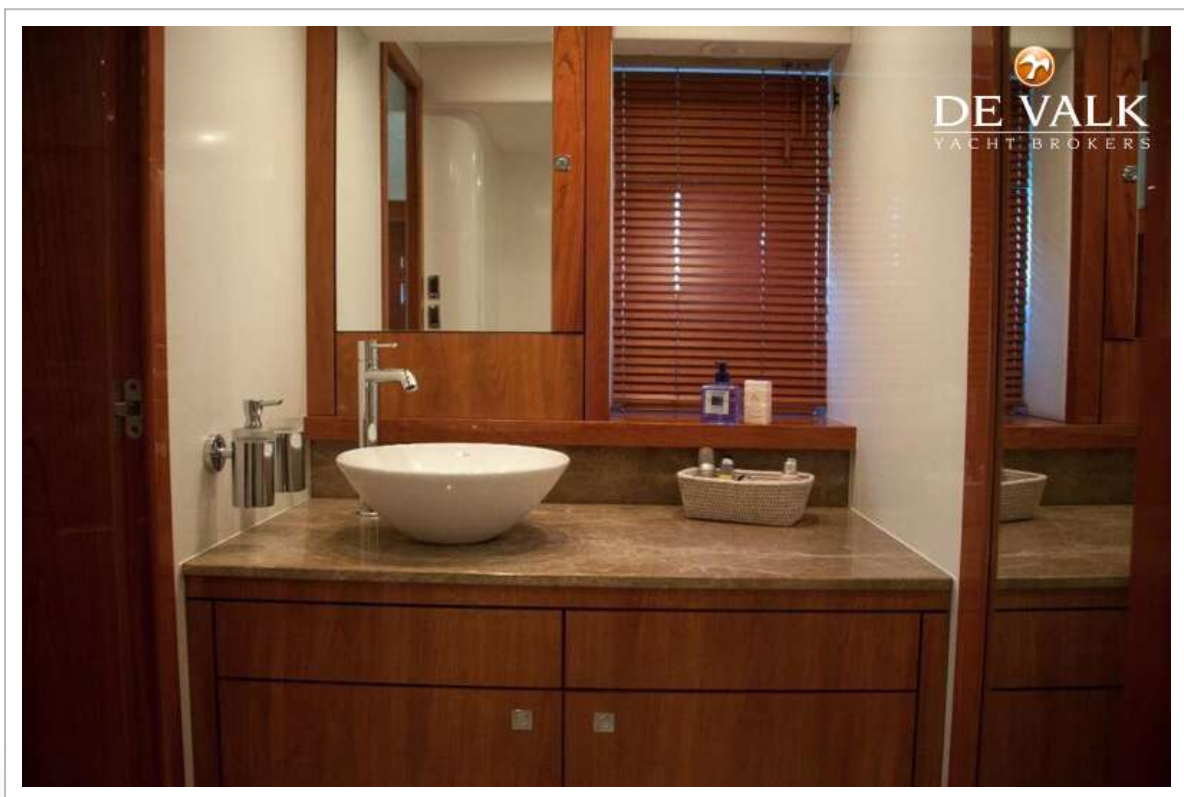
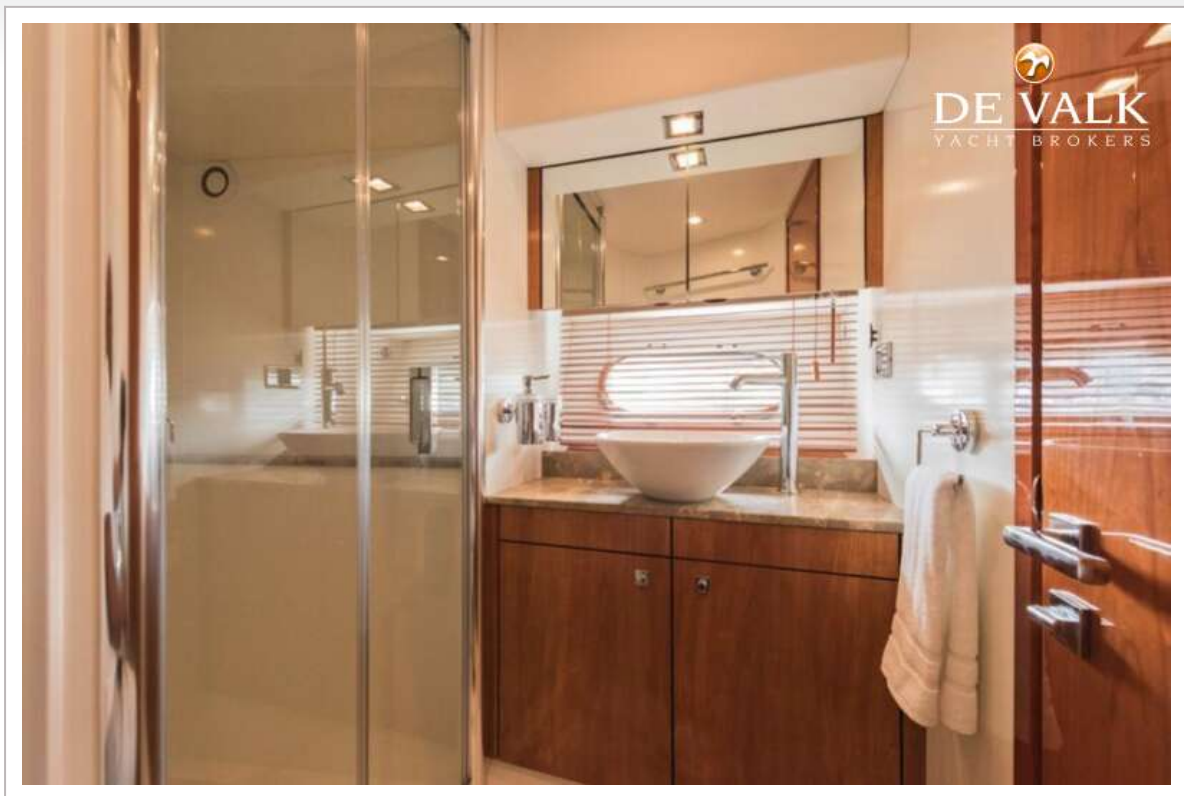


SUNSEEKER MANHATTAN 63



SUNSEEKER MANHATTAN 63





SUNSEEKER MANHATTAN 63

