



DE VALK  
YACHT BROKERS



## SUPER VAN CRAFT 1560



DE VALK  
YACHT BROKERS

# SUPER VAN CRAFT 1560

## BROKER'S COMMENTS

Super van Craft 1560 is a cantilever motor yacht with steel hull, superstructure and wooden wheelhouse and was built at the famous Klaassen yacht yard in Voorschoten. This Super van Craft has two cabins, each with its own separate shower and toilet area. Furthermore, she is equipped with two Volvo Penta diesel engines, well-maintained and ready to sail with the new owner! This Super van Craft can be viewed 7 days a week at our location in Sneek!

*Pieter Bosma*

## SPECIFICATIONS

<b>Dimensions</b>	15.60 x 4.45 x 1.30 (m)	<b>Builder</b>	Jachtwerf Klaassen - Voorschoten
<b>Built</b>	1987	<b>Cabins</b>	2
<b>Material</b>	Steel	<b>Berths</b>	4
<b>Engine(s)</b>	2 x Volvo Penta MD70C diesel	<b>Hp/Kw</b>	2 x 160.00 (hp), 117.76 (kw)
<b>Asking price</b>	sold (VAT )	<b>Lying</b>	at sales office

## CONTACT

<b>Sales office</b>	De Valk Sneek	<b>Telephone</b>	+31 515 42 80 30
<b>Address</b>	Zwolsmanweg 7 8606 KC Sneek The Netherlands	<b>E-mail</b>	sneek@devalk.nl

## DISCLAIMER

These particulars are given in good faith as supplied but cannot be guaranteed.



# SUPER VAN CRAFT 1560

## GENERAL

<b>Model</b>	SUPER VAN CRAFT 1560
<b>Type</b>	motor yacht
<b>LOA (m)</b>	15,60
<b>Beam (m)</b>	4,45
<b>Draft (m)</b>	1,30
<b>Air draft (m)</b>	3,60
<b>Headroom (m)</b>	1,95
<b>Year built</b>	1987
<b>Builder</b>	Jachtwerf Klaassen - Voorschoten
<b>Country</b>	The Netherlands
<b>Displacement (t)</b>	30
<b>Hull material</b>	steel
<b>Hull colour</b>	white
<b>Hull shape</b>	round-bilged
<b>Keel type</b>	long keel
<b>Superstructure material</b>	wood 2019 2- componenten geschilderd
<b>Rubbing strake</b>	stainless steel
<b>Deck finish</b>	teak
<b>Superstructure deck finish</b>	teak
<b>Cockpit deck finish</b>	teak
<b>Antifouling (year)</b>	2020 (2016 OWS gestraald en opnieuw ogebouwd)
<b>Window frame</b>	aluminium
<b>Window material</b>	tempered glass
<b>Deckhatch</b>	yes
<b>Portholes</b>	stainless steel
<b>Mast can be lowered</b>	manual
<b>Fuel tank (litre)</b>	stainless steel 2500L
<b>Freshwater tank (litre)</b>	steel 1200L (2019 schoongemaakt en behandeld)
<b>Blackwater tank (litre)</b>	yes
<b>Wheel steering</b>	yes



# SUPER VAN CRAFT 1560

## ACCOMMODATION

Cabins	2
Berths	4
Crew berths	4 +2
Interior	teak
Floor	carpet
Deck saloon	yes
Pilot house/deck saloon	yes
Saloon	yes
Headroom saloon (m)	1.95m
Sliding roof	manual
Heating	central hot water 2020 Kabola
Chart table	yes
Aft Cabin	yes
Dinette	yes
Opening door to cockpit	yes
Galley	yes
Countertop	Duropol Zwart marmer look
Sink	stainless steel
Cooker	calor gas 4 pits Indesit
Extractor	yes
Microwave	Etna
Fridge	2x
Hot water system	2022 boiler 55L
Water pressure system	electrical
Owners cabin	double bed
Wardrobe	hanging/drawers/shelves
Bathroom	separate
Toilet	separate
Toilet system	electric
Wash basin	in the bathroom



# SUPER VAN CRAFT 1560

<b>Shower</b>	separate
<b>Guest cabin 1</b>	v-bed
<b>Wardrobe</b>	hanging/drawers/shelves 4x klein
<b>Toilet</b>	separate Voor in schip
<b>Toilet system</b>	manual Voor in schip
<b>Wash basin</b>	at the toilet Voor in schip

## MACHINERY

<b>No of engines</b>	2
<b>Make</b>	Volvo Penta
<b>Type</b>	MD70C
<b>HP</b>	160
<b>kW</b>	117.76
<b>Fuel</b>	diesel
<b>Maximum speed (kn)</b>	19 km/h
<b>Cruising speed (kn)</b>	14km/h
<b>Consumption (l/hr)</b>	10
<b>Engine hours</b>	4600
<b>Engine cooling system</b>	freshwater heat exchanger
<b>Drive</b>	shaft
<b>Engine controls</b>	mechanical
<b>Gearbox</b>	yes
<b>Bowthruster</b>	electric 2019 service 25PK
<b>Exhaust</b>	watercooled
<b>Propeller type</b>	yes
<b>Propeller shaft material</b>	stainless steel
<b>Generator</b>	Whisper Power 3.5 kW
<b>Batteries</b>	2020 6x AGM 185 Ah 2x 110 Ah
<b>Battery monitor</b>	Mastervolt
<b>Battery charger</b>	Victron Multiplus 70A
<b>Solar panel</b>	2x 110W



# SUPER VAN CRAFT 1560

Shorepower	with cable
Extra info	24 / 220 Volt

## NAVIGATION

Electric compass	Plotter
Depth sounder	VDO Logic
Depth sounder/log	VDO Logic
VHF	Debeg VHF 6348
Plotter/GPS	Raymarine C90

## EQUIPMENT

Fixed windscreen	yes
Cockpit table	yes
Cockpit chairs	yes
Bathing platform	yes
Boarding ladder	yes
Bow ladder	yes
Deck shower	yes
Anchor	Danforth
Anchor chain	yes
Windlass	electrical
Deck wash	yes
Sea railing	wire Hout
Railing side opening gates	yes
Wiper	yes
Horn	yes
Fenders	yes
Mooring lines	yes
TV	SALORA
Radio-cd player	JVC



# SUPER VAN CRAFT 1560

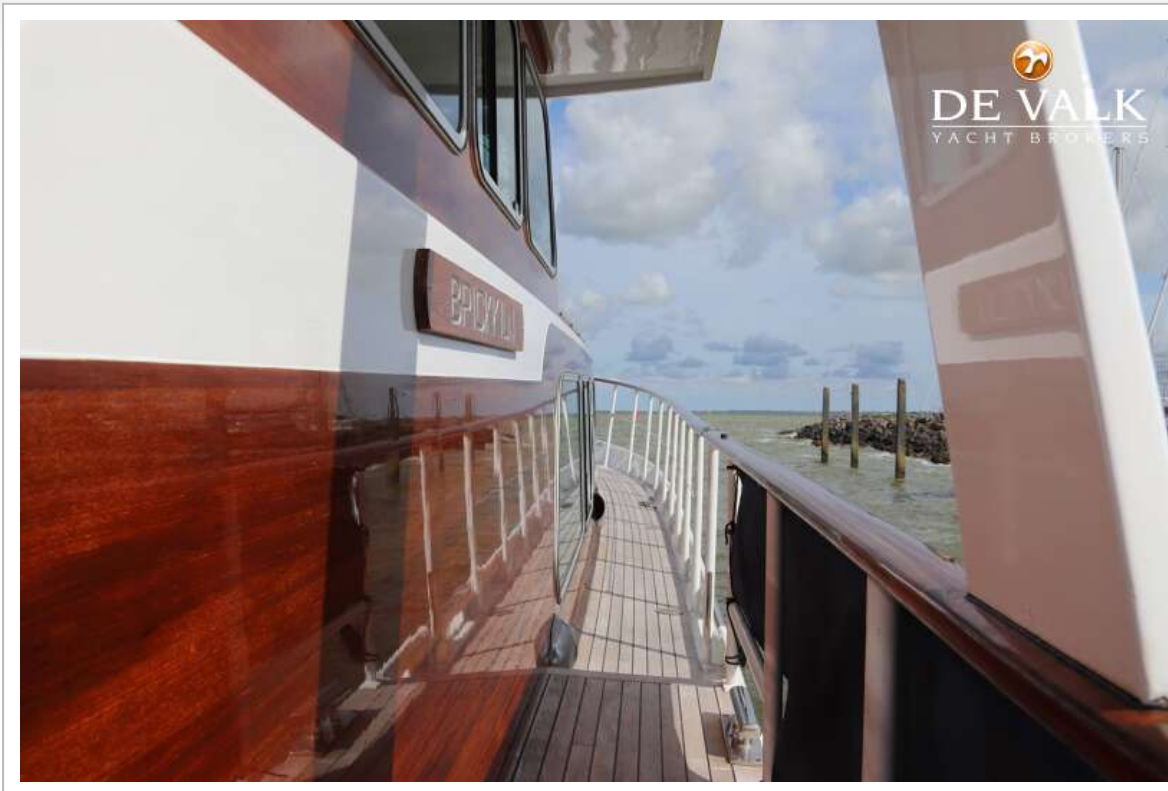


# SUPER VAN CRAFT 1560





# SUPER VAN CRAFT 1560



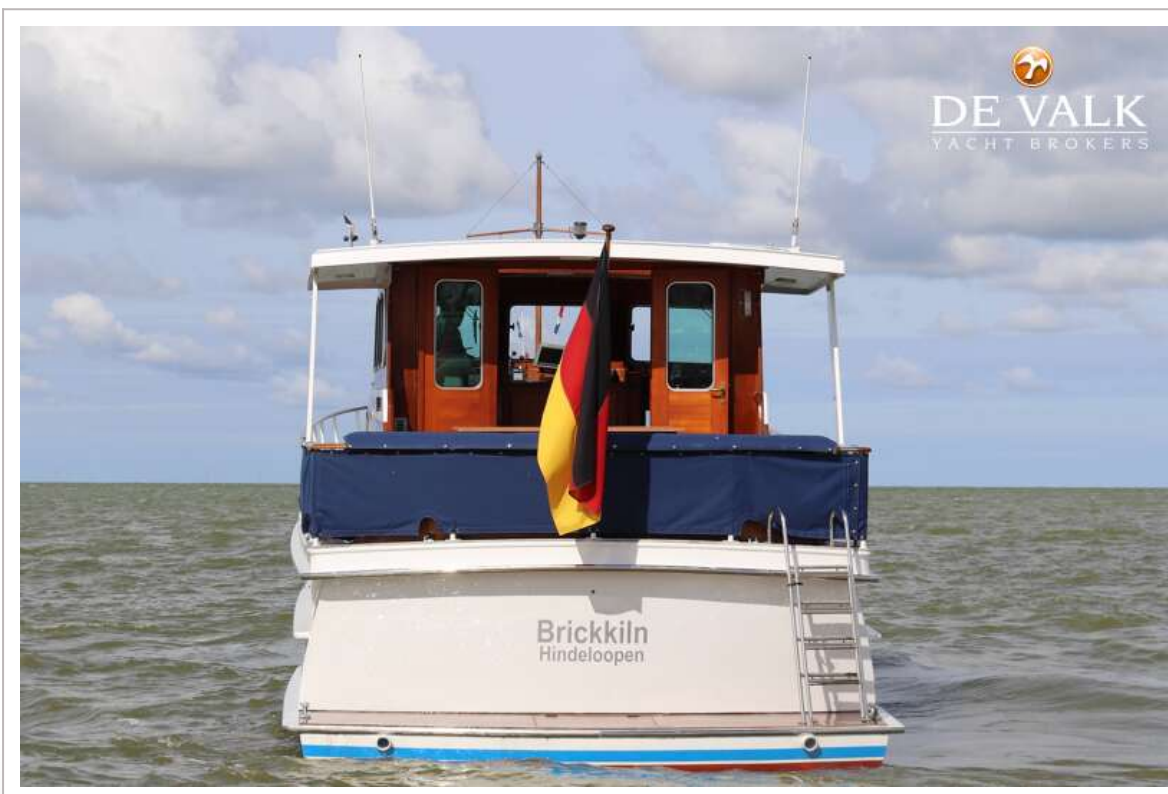
# SUPER VAN CRAFT 1560



# SUPER VAN CRAFT 1560



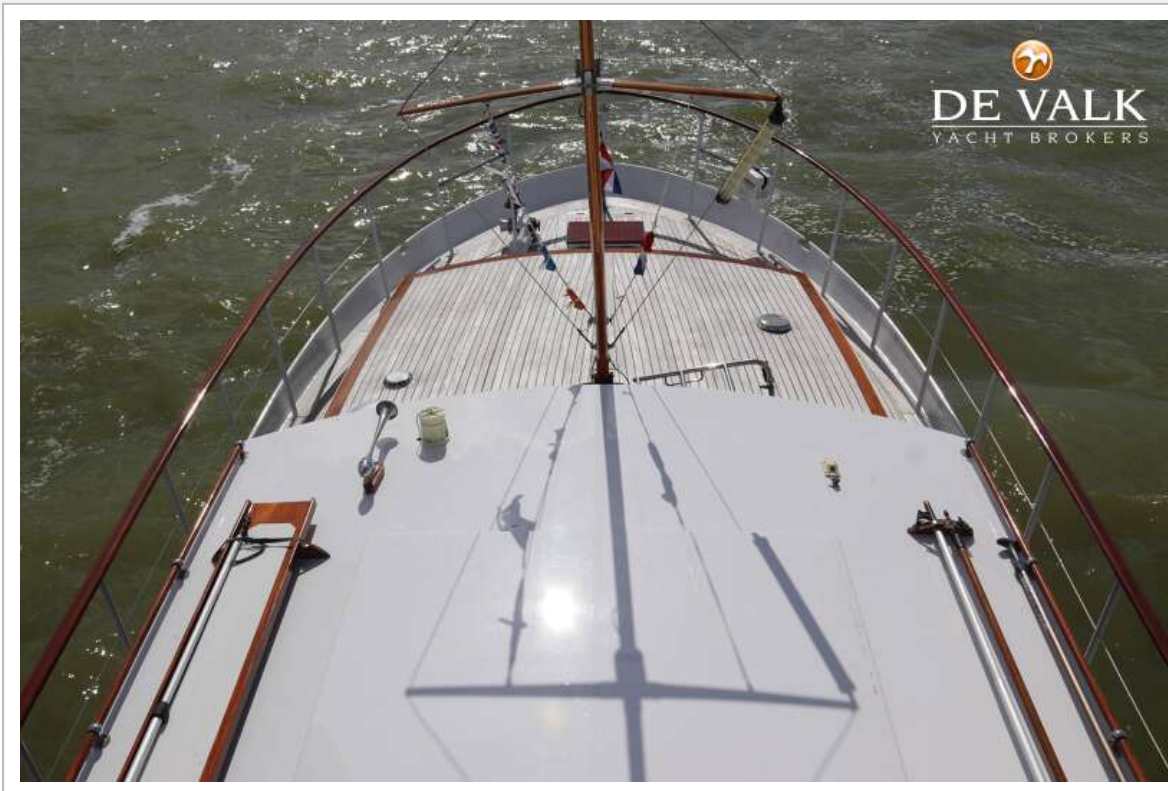
# SUPER VAN CRAFT 1560



# SUPER VAN CRAFT 1560



# SUPER VAN CRAFT 1560



# SUPER VAN CRAFT 1560

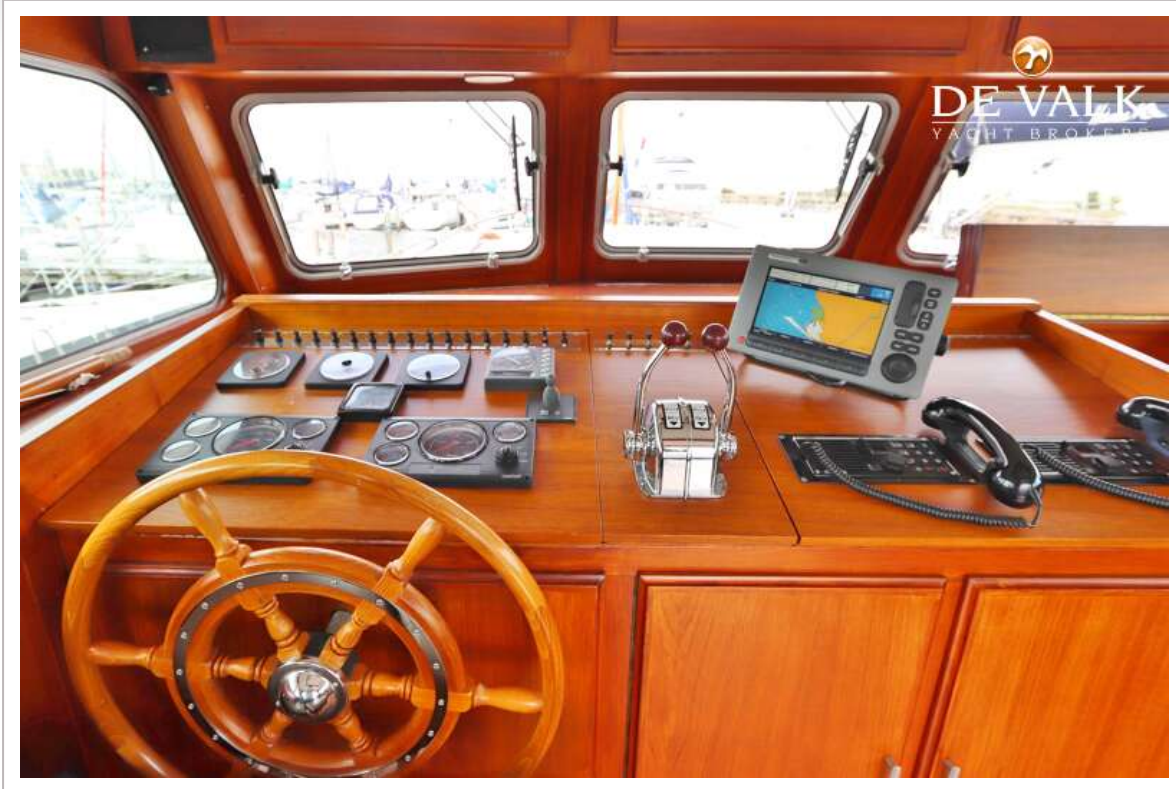


# SUPER VAN CRAFT 1560

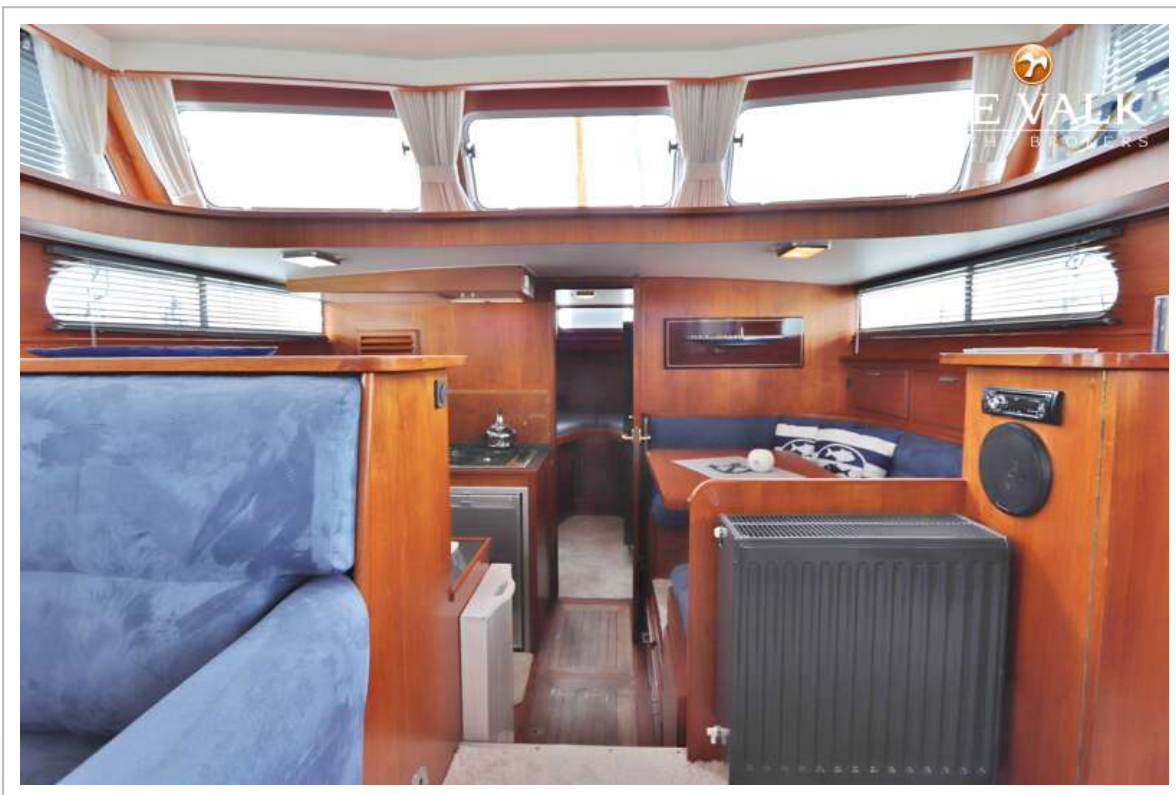
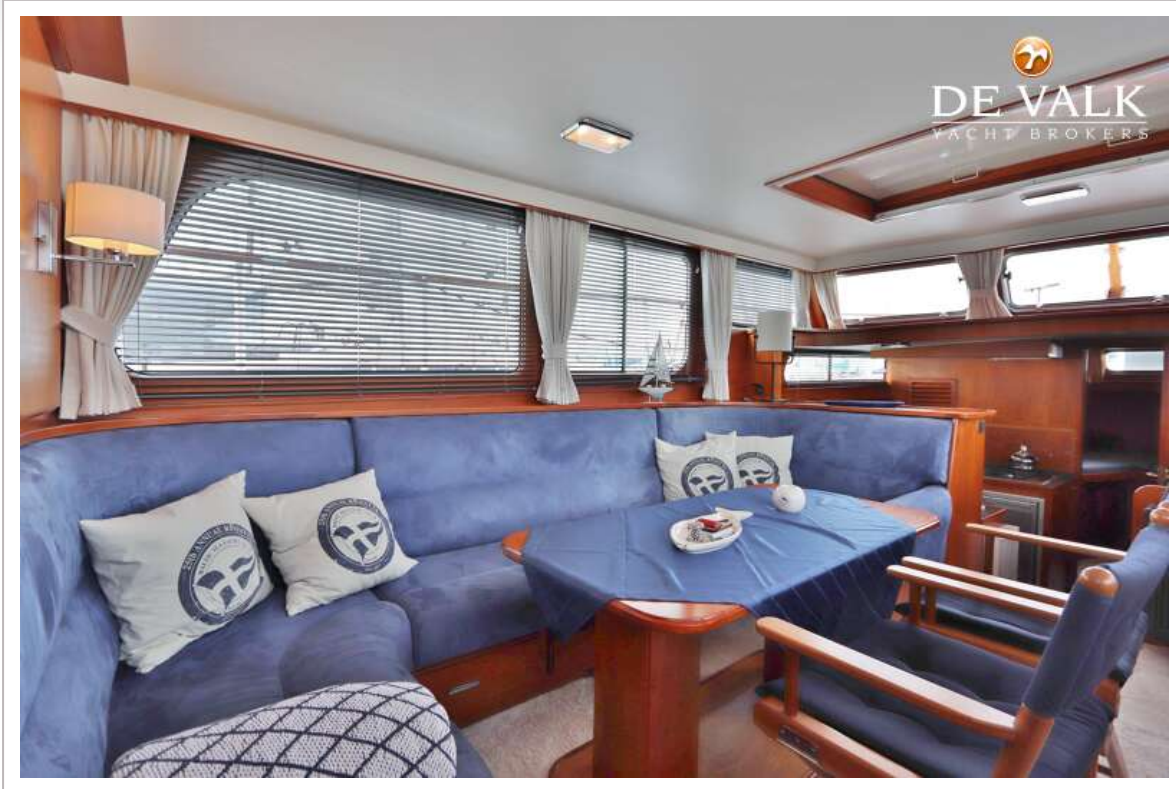




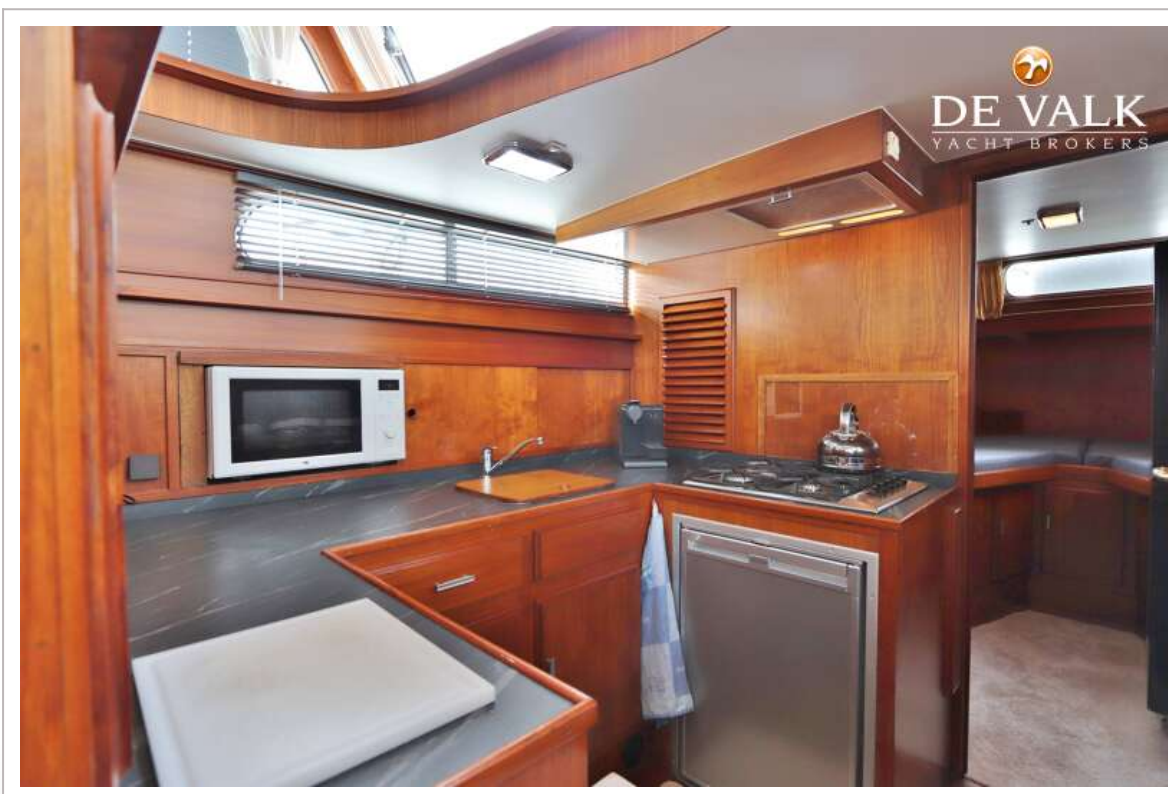
# SUPER VAN CRAFT 1560



# SUPER VAN CRAFT 1560



# SUPER VAN CRAFT 1560



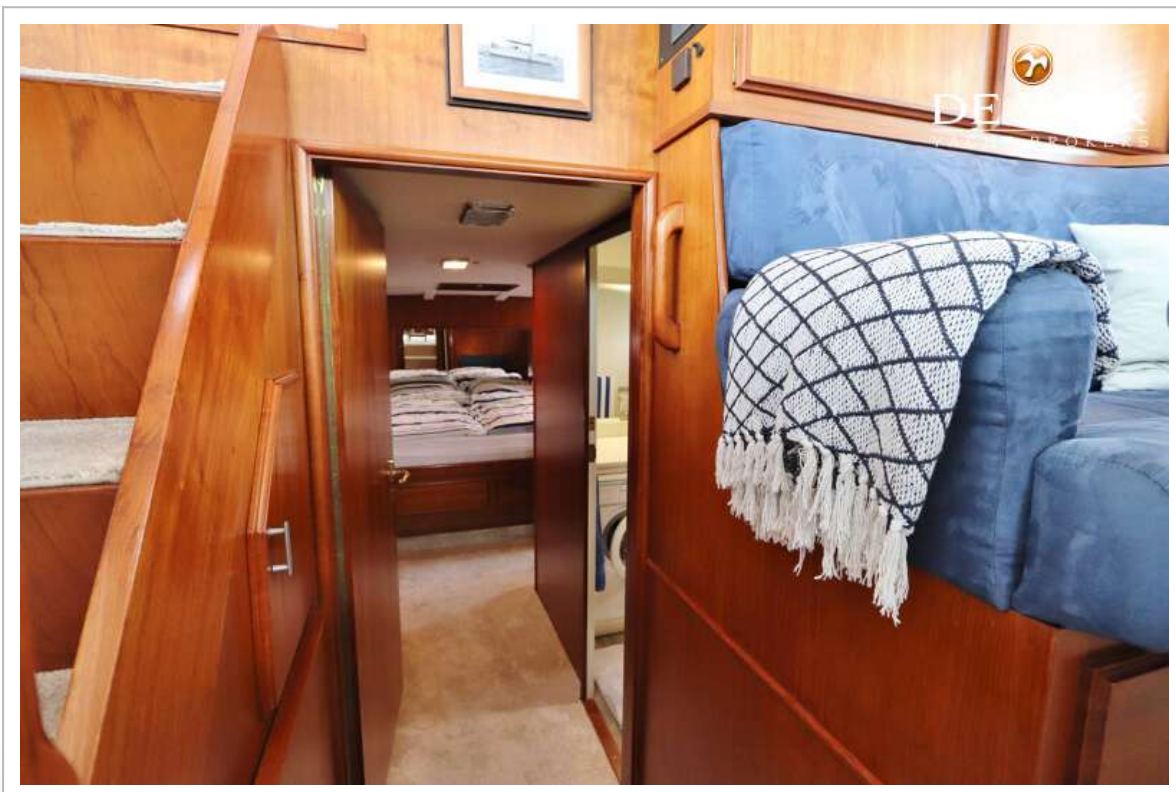
# SUPER VAN CRAFT 1560



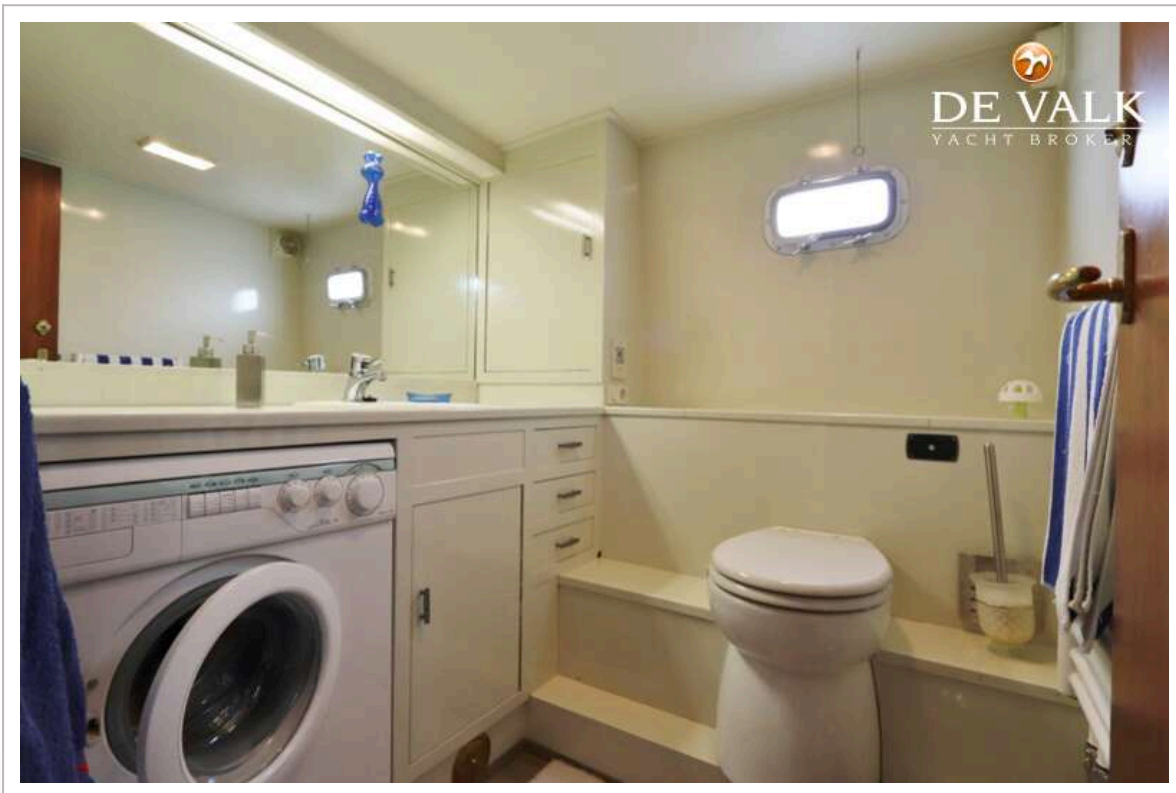
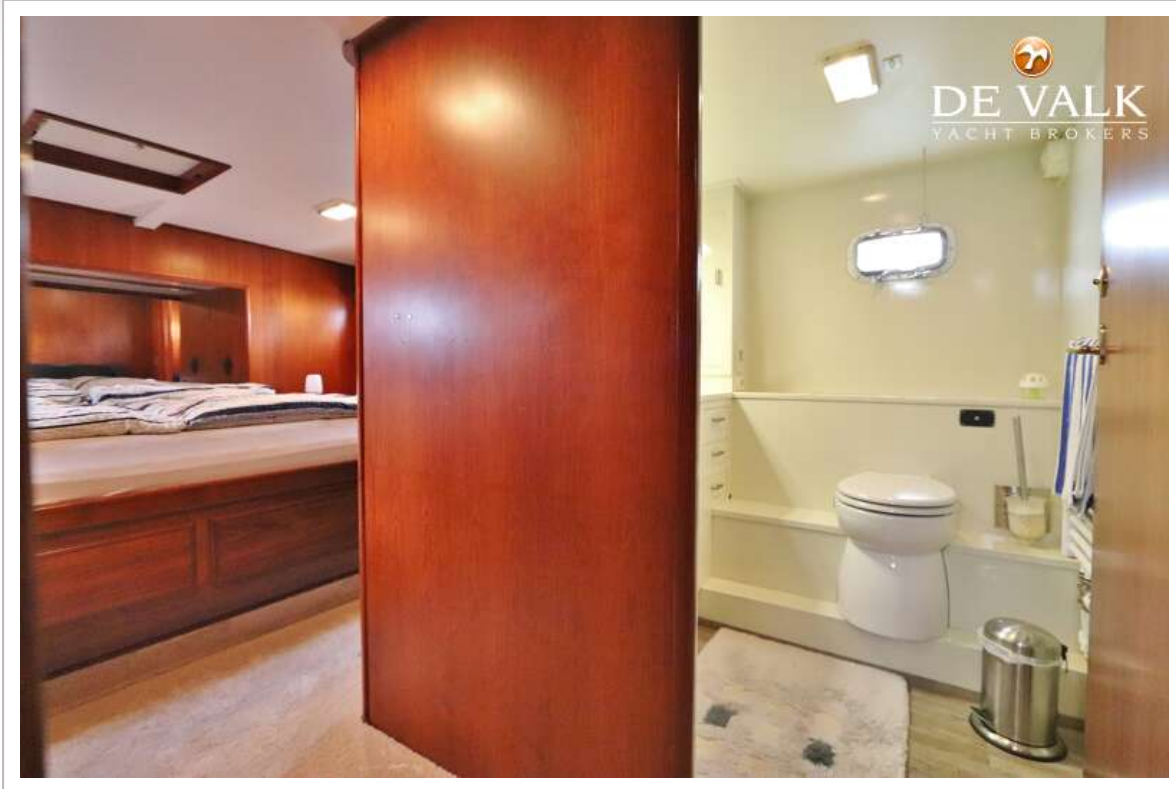
# SUPER VAN CRAFT 1560



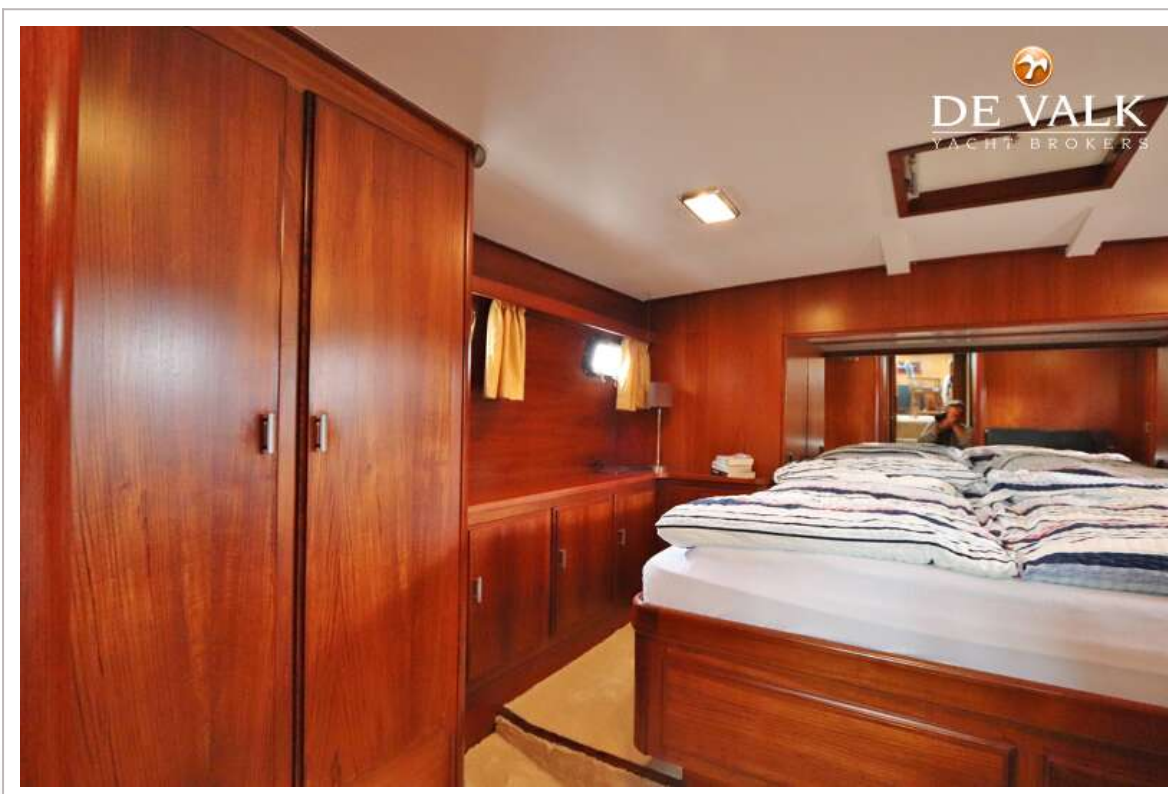
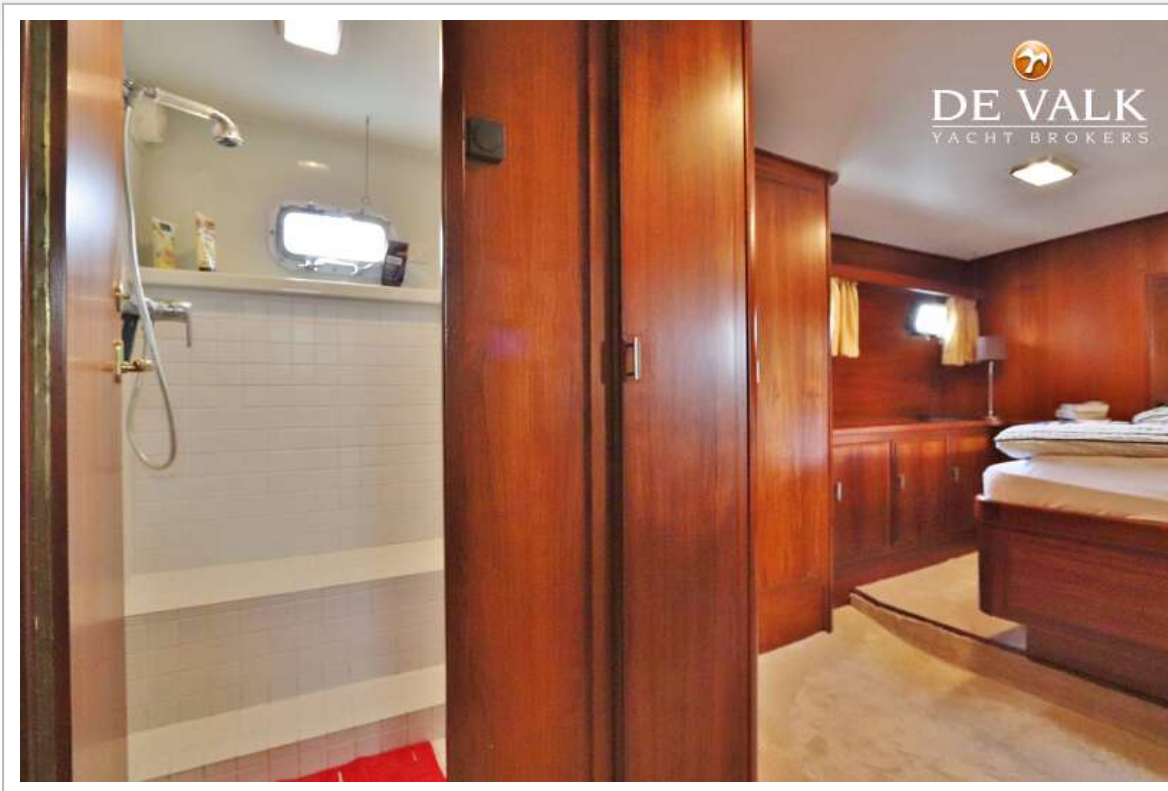
# SUPER VAN CRAFT 1560



# SUPER VAN CRAFT 1560



# SUPER VAN CRAFT 1560





# SUPER VAN CRAFT 1560

