



DE VALK  
YACHT BROKERS



INTER 9000 NOR-LINE



DE VALK  
YACHT BROKERS

# INTER 9000 NOR-LINE

## BROKER'S COMMENTS

The Inter 9000 Nor-Line is the perfect example of good quality. Her clever layout ensures that there is plenty of space and comfort on board. This ship is equipped with a Simrad plotter system and electric bow thruster. The Inter 9000 Nor-Line is now available for viewing at our office in Loosdrecht.

*Mark Hesselmans*

## SPECIFICATIONS

<b>Dimensions</b>	9.00 x 2.90 x 0.70 (m)	<b>Builder</b>	Inter Trading AS
<b>Built</b>	2005	<b>Cabins</b>	2
<b>Material</b>	GRP	<b>Berths</b>	5
<b>Engine(s)</b>	1 x Yanmar 4JH113-ITL diesel	<b>Hp/Kw</b>	101.00 (hp), 74.34 (kw)
<b>Asking price</b>	sold (VAT )	<b>Lying</b>	at sales office

## CONTACT

<b>Sales office</b>	De Valk Loosdrecht B.V.	<b>Telephone</b>	+31 (0)35 582 90 30
<b>Address</b>	't Breukeleveense Meentje 6 1231LM Loosdrecht / Wijdmeren NL	<b>E-mail</b>	loosdrecht@devalk.nl

## DISCLAIMER

These particulars are given in good faith as supplied but cannot be guaranteed.



## GENERAL

Model	INTER 9000 NOR-LINE
Type	motor yacht
LOA (m)	9,00
Beam (m)	2,90
Draft (m)	0,70
Headroom (m)	1,90
Year built	2005
Builder	Inter Trading AS
Country	Norway
CE norm	C
Hull material	GRP
Hull colour	white
Superstructure material	GRP
Rubbing strake	rubber
Deck material	GRP
Superstructure deck finish	non-skid moulded in
Antifouling (year)	2021
Window frame	aluminium
Window material	glass
Portholes	yes
Radar arch	collapsible
Fuel tank (litre)	200
Level indicator (fuel tank)	Wema
Freshwater tank (litre)	100
Level indicator (freshwater)	Wema
Blackwater tank (litre)	100
Blackwater tank extraction	deck extraction
Outside helm position	yes
Extra info	Survey done in 2021



## ACCOMMODATION

Cabins	2
Berths	5
Interior	teak
Floor	carpet & teak
Open cockpit	yes
Saloon	yes
Headroom saloon (m)	1,90+/-
Heating	Webasto online on engine
Chart table	yes
Aft Cabin	Convertible into extra berth
Dinette to convert into berth	yes
Opening door to cockpit	yes
Galley	yes
Sink	stainless steel
Cooker	Wallis Safe Flame 95D 2 burners
Microwave	Whirlpool
Fridge	Isotherm
Hot water system	yes
Water pressure system	electrical
Owners cabin	double bed
Wardrobe	shelves
Bathroom	shared
Toilet	shared
Toilet system	manual Jabsco
Wash basin	in the bathroom
Shower	shared
Guest cabin 1	Dinette
Wardrobe	drawers and shelves
Guest cabin 2	single bed



## MACHINERY

No of engines	1
Make	Yanmar
Type	4JH113-ITL
HP	101
kW	74.34
Fuel	diesel
Maximum speed (kn)	11
Cruising speed (kn)	7
Engine hours	1635
Engine cooling system	freshwater heat exchanger
Drive	shaft
Engine controls	bowden cable
Gearbox	hydraulic
Bowthruster	electric
Exhaust	watercooled
Propeller type	fixed
Electric bilge pump	yes
Batteries	yes
Start battery	Winner Marine 100Ah (2022)
Service battery	Whisper Power AGM 12V-145Ah (2022)
Battery monitor	Whisper Power
Battery charger/inverter	Whisper power suprême combi 12V/230V/2000W/80A (installed 2022)
Shorepower	with cable

## NAVIGATION

Compass	Plastimo
Depth sounder/log	Simrad Cruise 9 inch display (installed 2022)
Rudder angle indicator	VDO
Plotter	Simrad Cruise 9 inch display (installed 2022)



Navigation lights	yes
-------------------	-----

## EQUIPMENT

Fixed windscreen	yes
Cockpit cover	2019
Cockpit cushions	yes
Cockpit table	yes
Bathing platform	yes
Boarding ladder	stainless steel
Anchor	yes
Anchor chain	yes
Windlass	electrical Quick
Sea railing	stainless steel
Grab rail (superstructure)	stainless steel
Wiper	3x
Horn	yes
Fenders	yes
Mooring lines	yes
Radio-cd player	JVC KD-G402
Speakers in cabin	yes





# INTER 9000 NOR-LINE



# INTER 9000 NOR-LINE





# INTER 9000 NOR-LINE



# INTER 9000 NOR-LINE





# INTER 9000 NOR-LINE







# INTER 9000 NOR-LINE







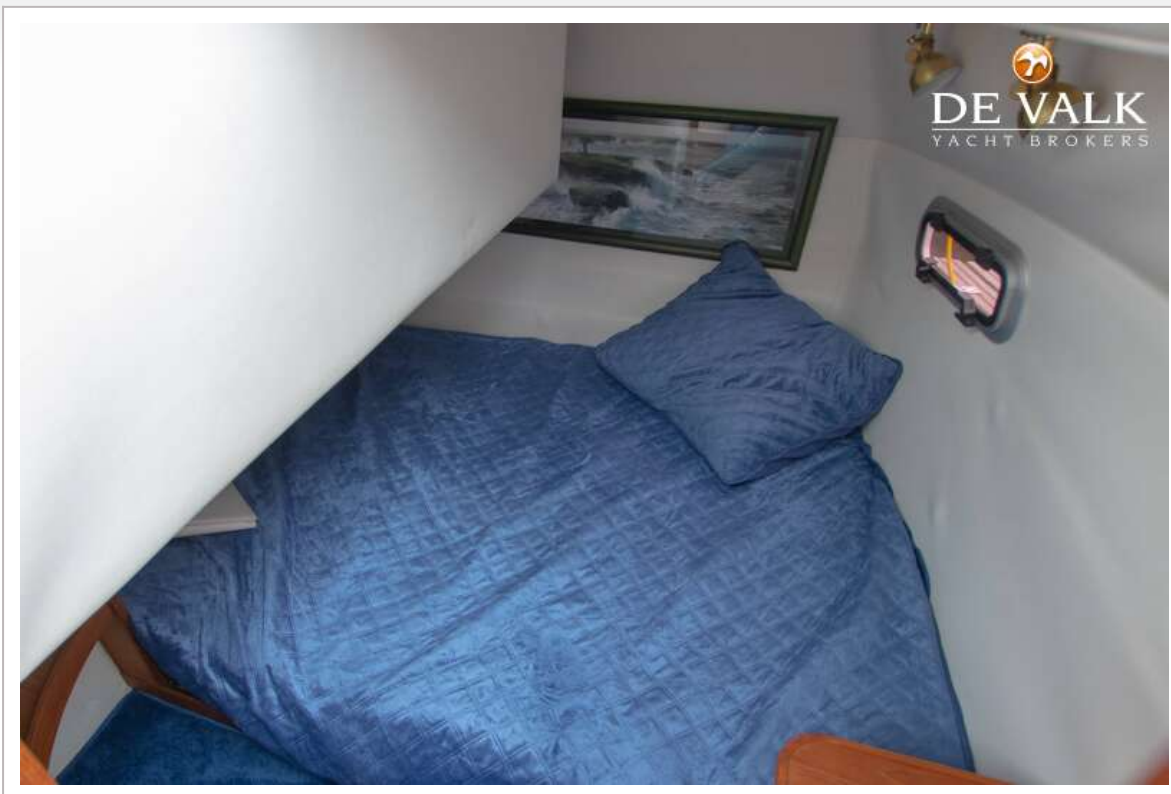




# INTER 9000 NOR-LINE



## INTER 9000 NOR-LINE



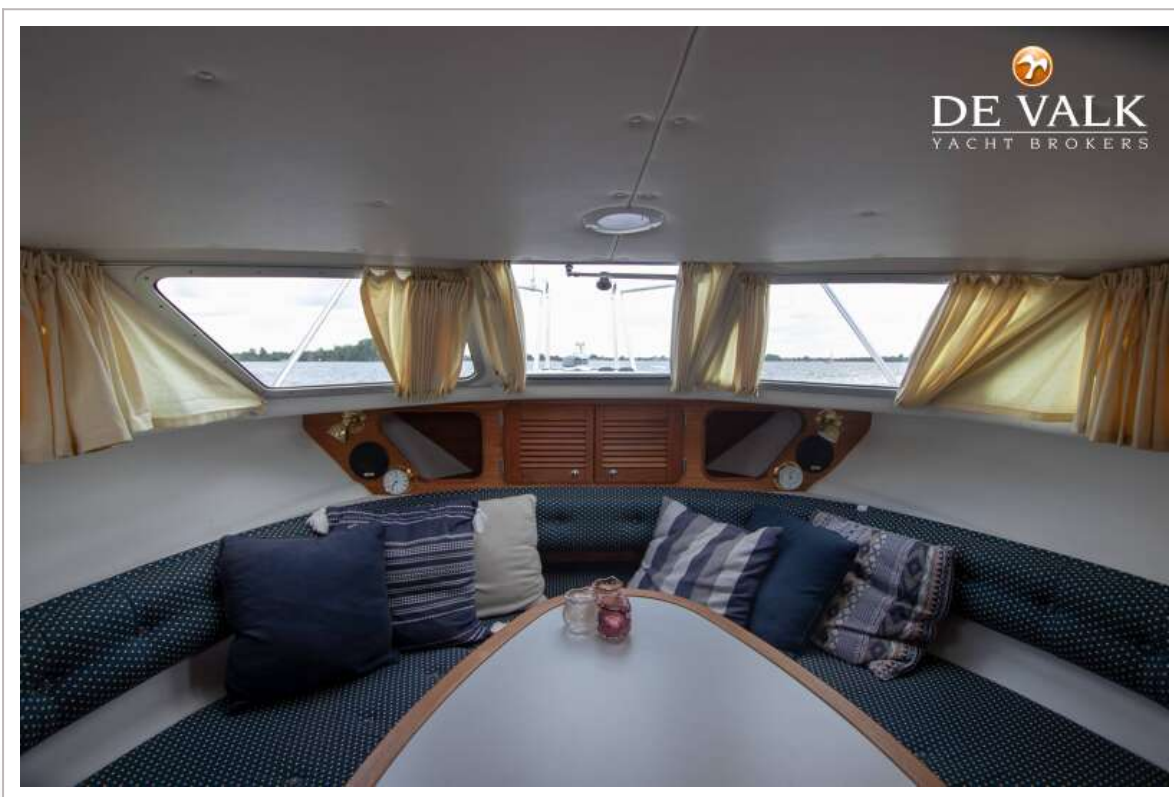


# INTER 9000 NOR-LINE





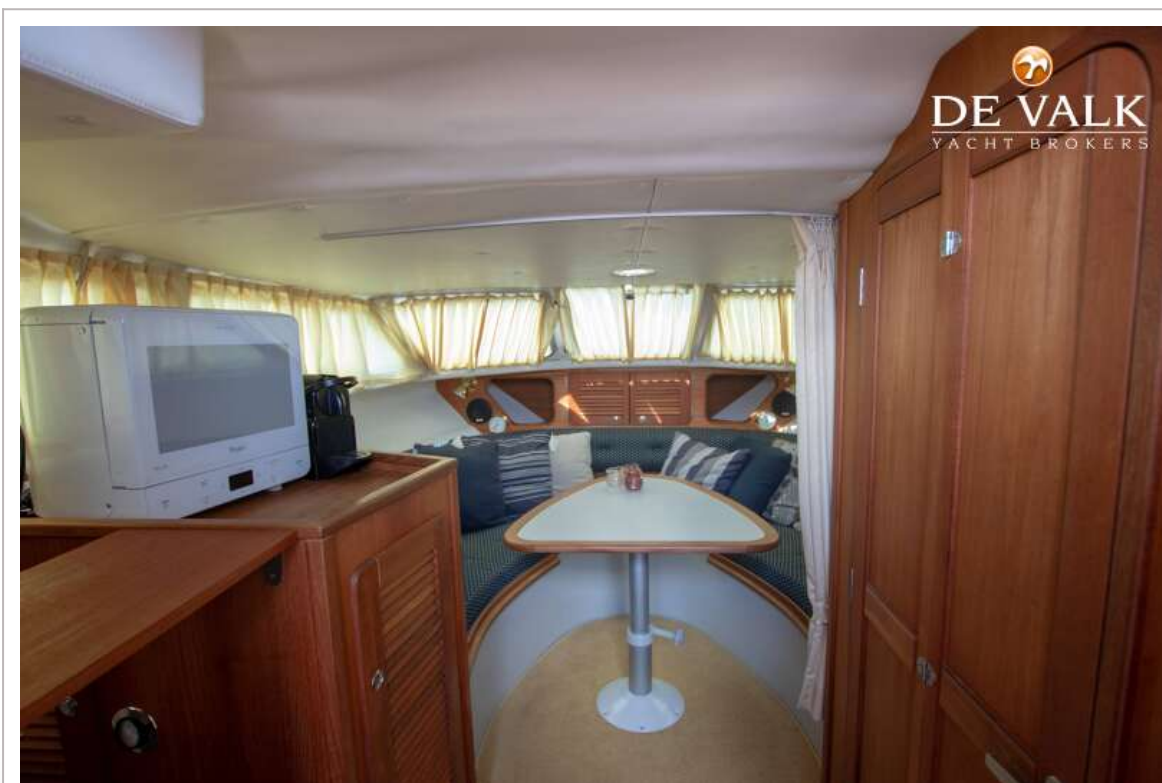
# INTER 9000 NOR-LINE



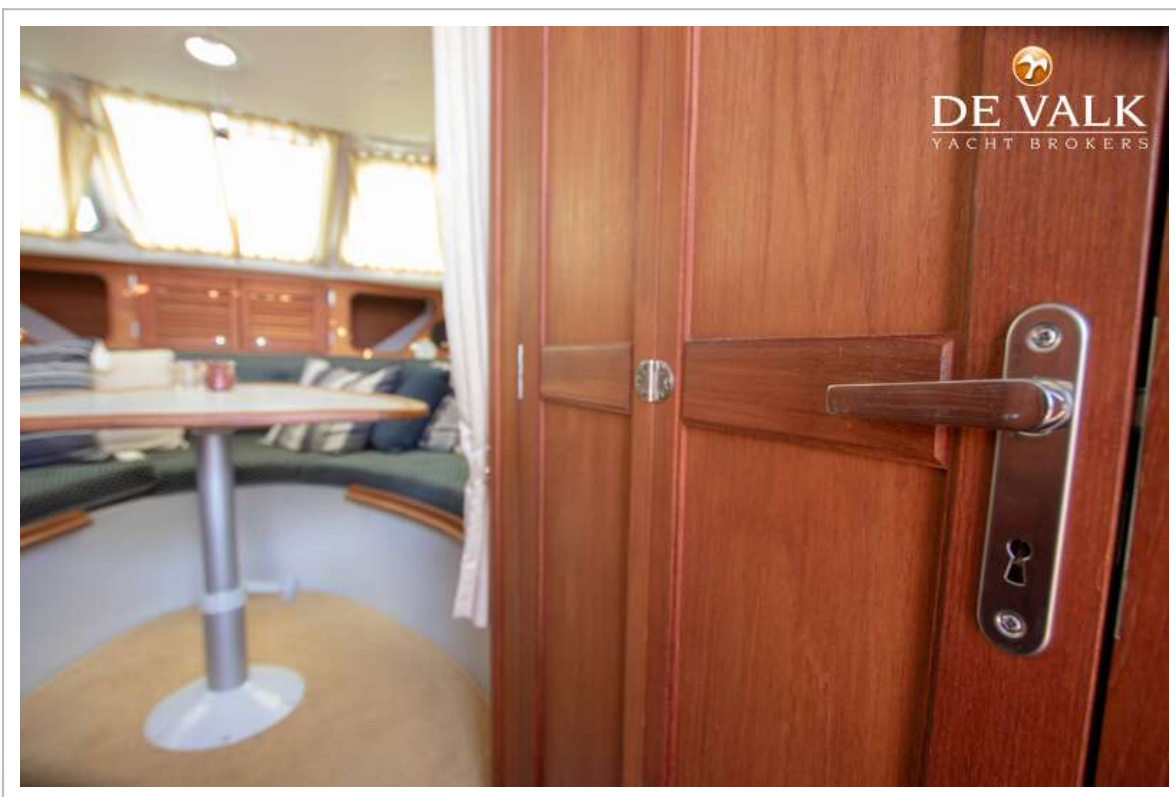
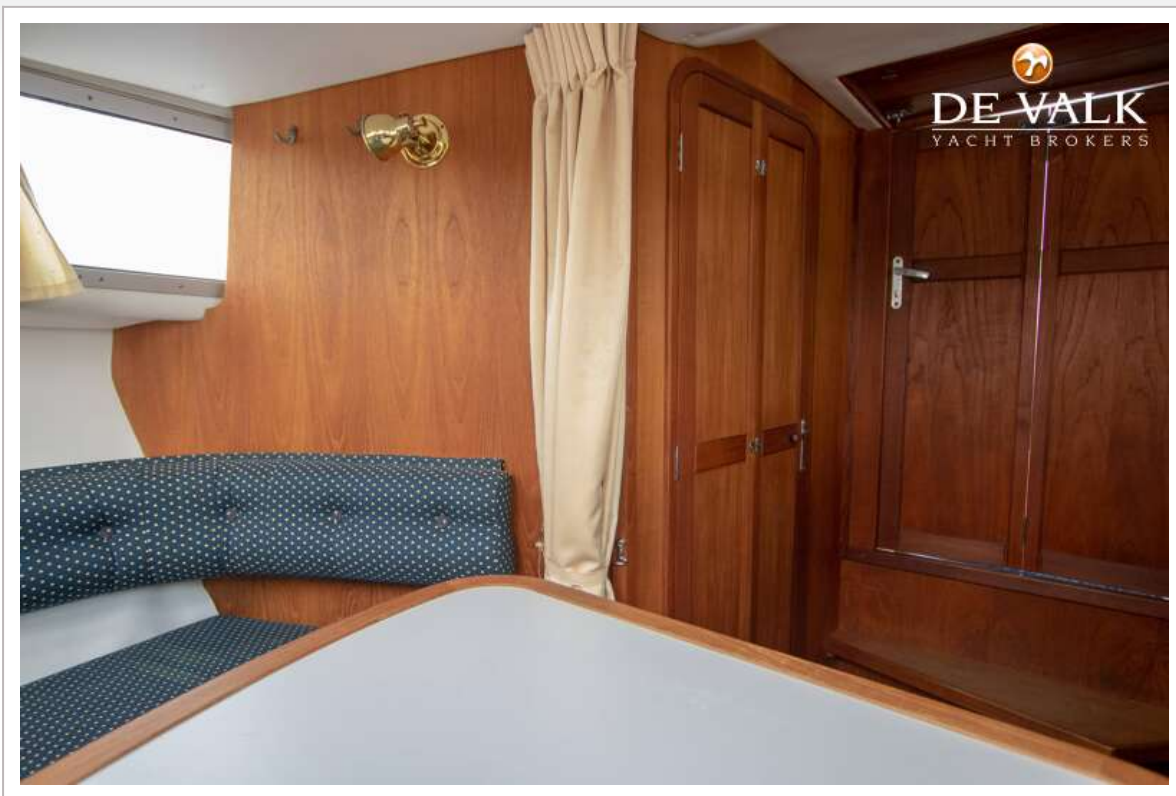




## INTER 9000 NOR-LINE



# INTER 9000 NOR-LINE







## INTER 9000 NOR-LINE

