



ALDEN 44,6 KETCH



ALDEN 44,6 KETCH

BROKER'S COMMENTS

Designed by the American John Alden under the code name RENA CLASS 0744N & constructed in Cape Town in 1984 using Iroko wood for the Hull & Deck and Teak for the interior. Plans were brought from Alden co through Peabody Museum Massachusetts U.S by British captain N. Halliwell. He believed the yacht was ideal for transatlantic passages. He did 60.000 nm in 5 years from South Africa to USA, UK and back to Africa.

Sofia Ilia-Salvanou

SPECIFICATIONS

Dimensions	13.59 x 4.00 x 2.05 (m)	Builder	Nigel Haliwell
Built	1984	Cabins	2
Material	Wood	Berths	7
Engine(s)	1 x PERKINS 4236 diesel	Hp/Kw	75.00 (hp), 55.20 (kw)
Asking price	€ 158.000 (VAT Not paid)	Lying	elsewhere / Not at sales office

CONTACT

Sales office	De Valk Corfu	Telephone	(+30) 266 111 8095
Address	New Port of Corfu, near Gouvia Marina 490 83 Corfu GR	E-mail	corfu@devalk.nl

DISCLAIMER

These particulars are given in good faith as supplied but cannot be guaranteed.



ALDEN 44,6 KETCH

GENERAL

Model	ALDEN 44,6 KETCH
Type	sailing yacht
LOA (m)	13,59
Beam (m)	4,00
Draft (m)	2,05
Year built	1984
Builder	Nigel Haliwell
Country	South Africa
Designer	John Alden
Displacement (t)	18,14
Ballast (tonnes)	8
Gross tonnage	20,05
Net tonnage	17,78
Hull material	wood
Hull colour	off-white Cream
Hull shape	full bilged
Keel type	long keel
Superstructure material	wood 2022 sanded & painted
Rubbing strake	wood
Deck material	wood IROCO 2,8mm recaulked 2020
Deck finish	teak IROCO & TEAK at cockpit
Superstructure deck finish	teak
Cockpit deck finish	teak
Antifouling (year)	2022 Every year sanded & painted (International 6400 interspeed)
Deckhatch	yes
Fuel tank (litre)	stainless steel X2, Total 400 Lt
Freshwater tank (litre)	stainless steel X2, 500 Lt, VETUS pump
Blackwater tank (litre)	polyethylene X1, 100 Lt, JABSCO pump
Greywater tank (litre)	Jabsco membrane of the pump
Wheel steering	mechanical Turning screw



ALDEN 44,6 KETCH

Outside helm position	yes
More info on hull	2022 sanded & painted
More info on paintwork	Varnished areas take 2 layers of 2 compon, epifanes spring Autum
Extra info	Restoration 2012
Extra info	The yacht still takes part in yacht races & Regattas
Extra info	2022: cleaning of cooling & injectors, new diesel & water pumps

ACCOMMODATION

Cabins	2
Berths	7
Crew cabin	1
Crew berths	1
Interior	mahogany 2017
Floor	wood New 2018
Saloon	With new leather seats 2017
Navigation center	yes
Chart table	New leather seat 2017
Dinette	yes
Opening door to cockpit	yes
Galley	yes
Countertop	New 2018
Sink	New 2018
Cooker	New 2018, eNo gas stove
Fridge	Connected with solar panels
Crockery	yes
Owners cabin	double bed + single bed (new double bed 2017)
Wardrobe	yes
Bathroom	separate
Toilet	separate
Toilet system	electric VETUS (in new wooden bathroom 2021)



ALDEN 44,6 KETCH

Wash basin	in the bathroom
Shower	separate
Guest cabin 1	double bed (new double bed 2017)
Bathroom	separate
Toilet	separate
Wash basin	in the bathroom
Shower	separate
Guest cabin 2	bunk bed X2 above salon sofas (new single bunk beds 2017)
Toilet	separate
Wash basin	in the bathroom
Shower	separate
Crew cabin(s)	(new bed 2017)
Extra info	2022: shaft removed and serviced, seal replacement & Inspected
Extra info	2022: Inspected by Phoenix register of shipping surveyor

MACHINERY

No of engines	1
Make	PERKINS
Type	4236
HP	75
kW	55.20
Fuel	diesel
Year of overhaul	May 2022
Engine hours	1689
Drive	shaft
Shaft seal	yes
Propeller shaft material	stainless steel
Batteries	yes
Start battery	225 ah 2017
Service battery	225 ah 2017
Navigation Battery	60ah for VHF 2022



ALDEN 44,6 KETCH

Windlass battery	225 ah 2017
Solar panel	2019, 160W on Mizzen Mast enough for fridge & basic needs
Shorepower	yes

NAVIGATION

Compass	yes
Depth sounder	NEXUS
VHF	yes
Autopilot	RAYMARINE very reliable
GPS	RAYMARINE A50d
EPIRB	yes
Camera	Automatic wifi camera (controlled by mob devices wifi) on Mizzen

EQUIPMENT

Sun awning	X2
Anchor	CQR Plough 27,2 Kg
Anchor chain	80m, 12mm LOFRANS , rolling mechanism stores chain under deck
Anchor 2	CQR Plough 20,4 Kg
Windlass	LOFRANS FALCON 1500w, 2012, fully serviced 2022
Dinghy	New 2022, 2m
Outboard	Yamaha
Lifejackets	yes
Fenders	yes
Spare parts	yes
Fire extinguisher	yes

RIGGING

Rigging	April 2021 inspected
Standing rigging	Stainless steel wires with Norsman joins on brass tensioners



ALDEN 44,6 KETCH

Brand mast	Bellamy Australian, sanded & painted 2022
Material mast	aluminium
Mainsail	By Bruce Banks
Mizzen	yes
Jib	yes
Yankee	yes
Extra info	May 2022 new brake system for shaft to stop when sailing



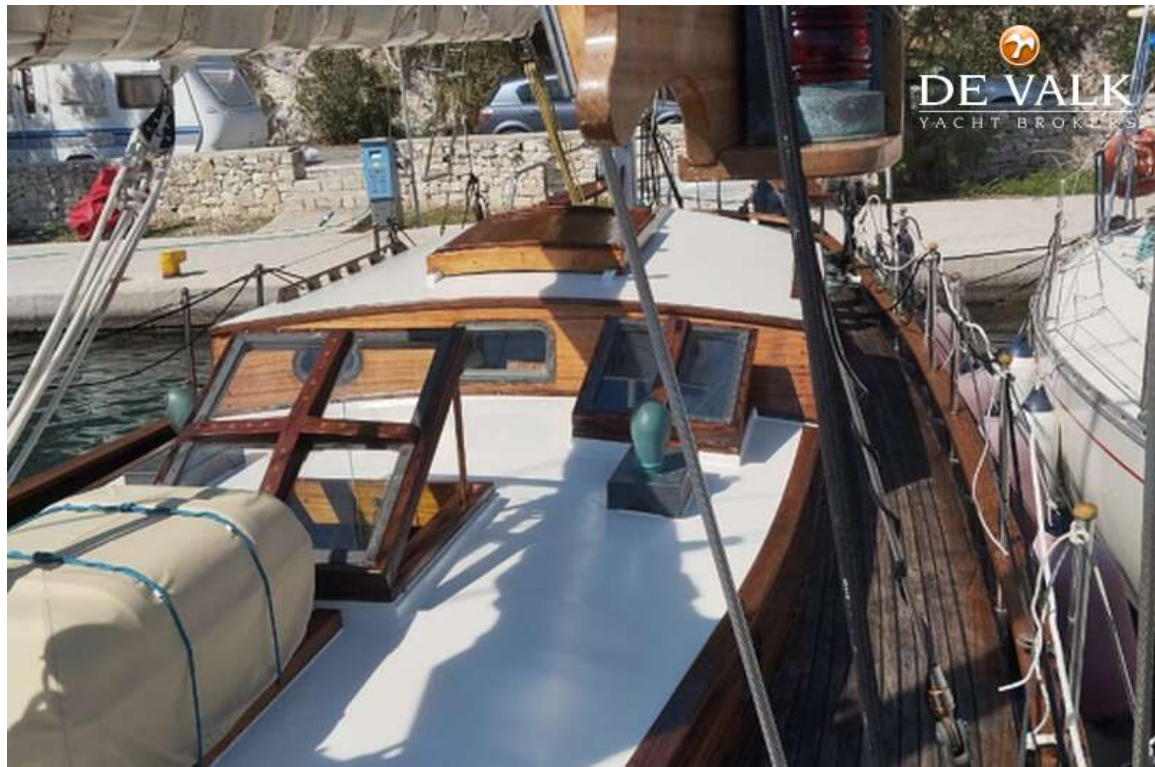
ALDEN 44,6 KETCH



ALDEN 44,6 KETCH



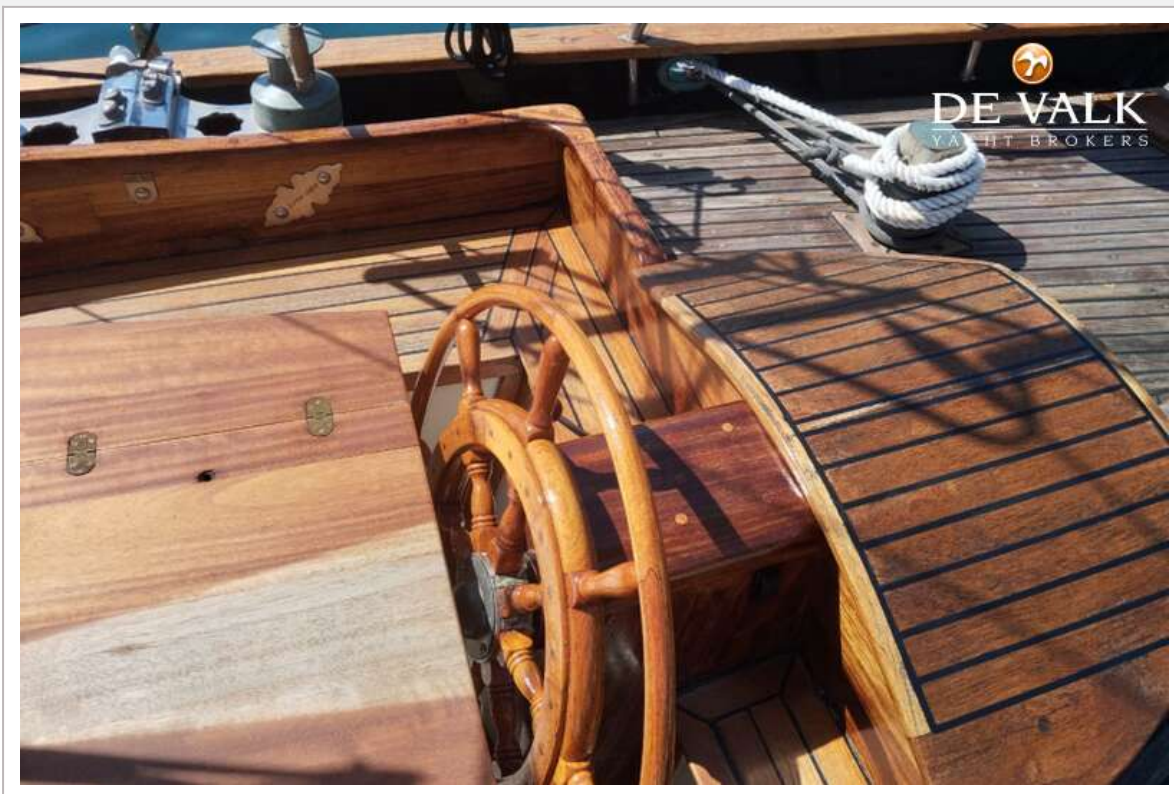
ALDEN 44,6 KETCH



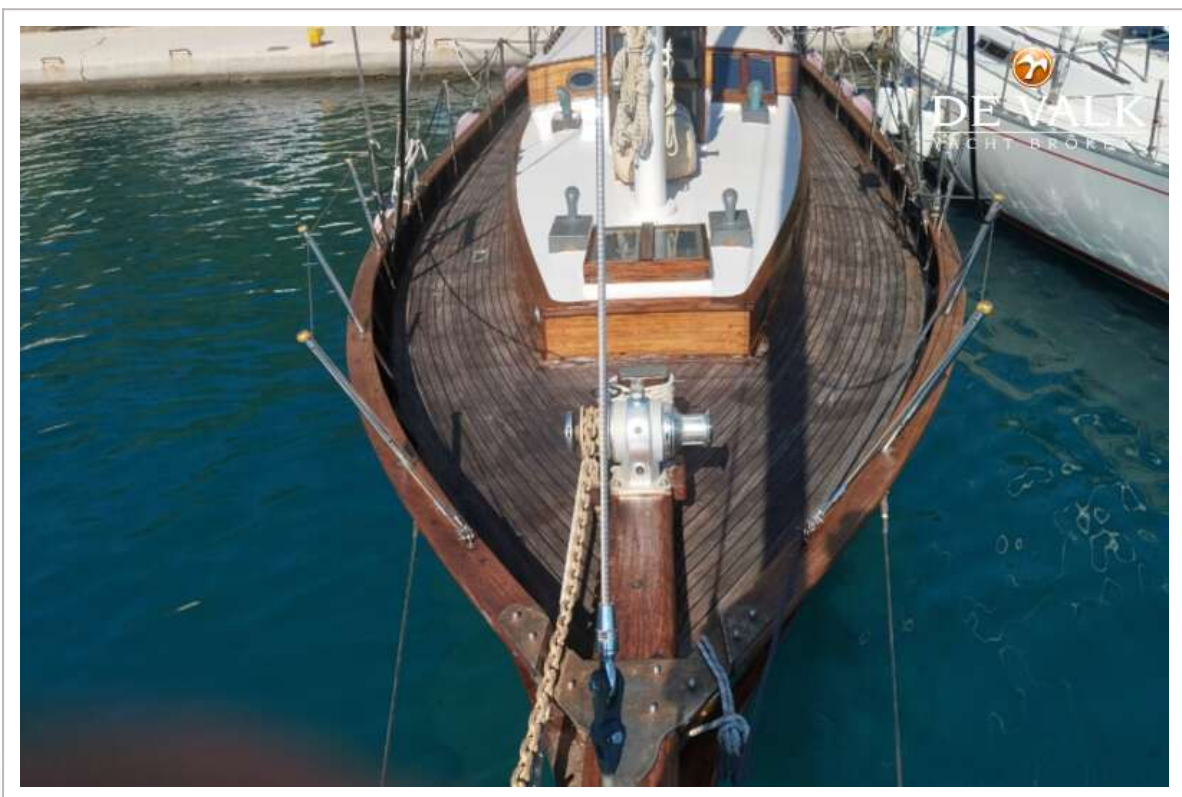
ALDEN 44,6 KETCH



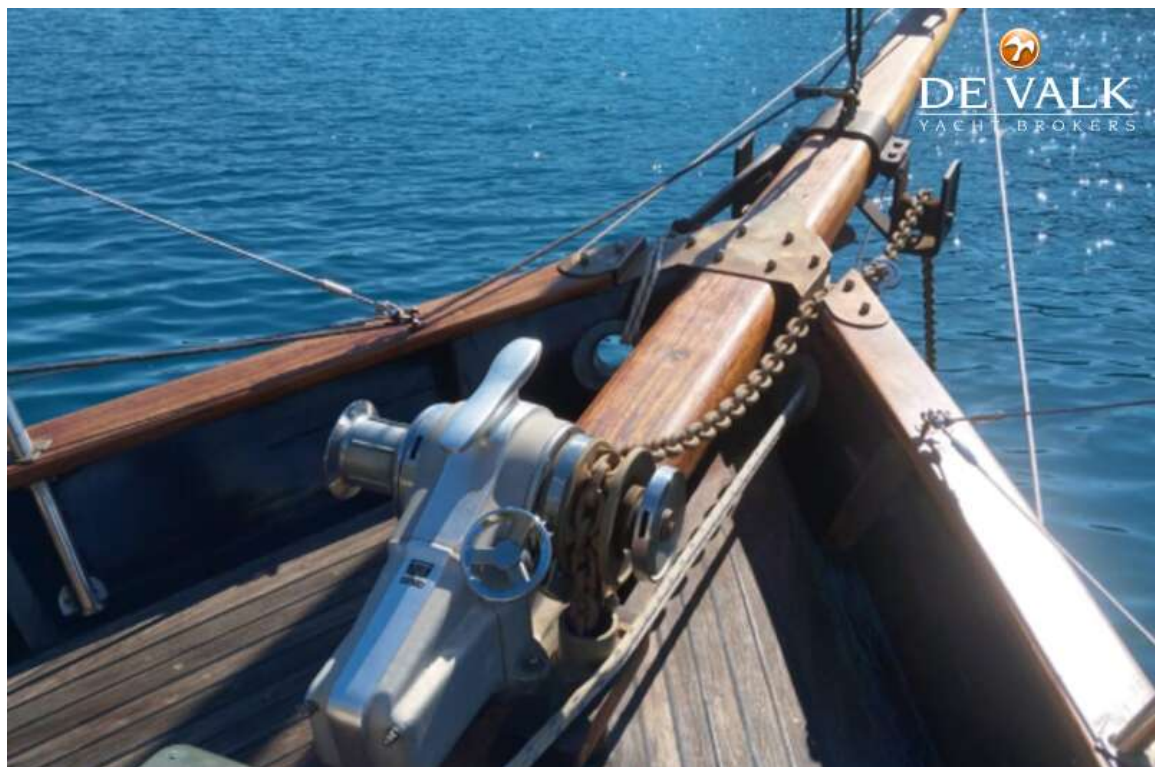
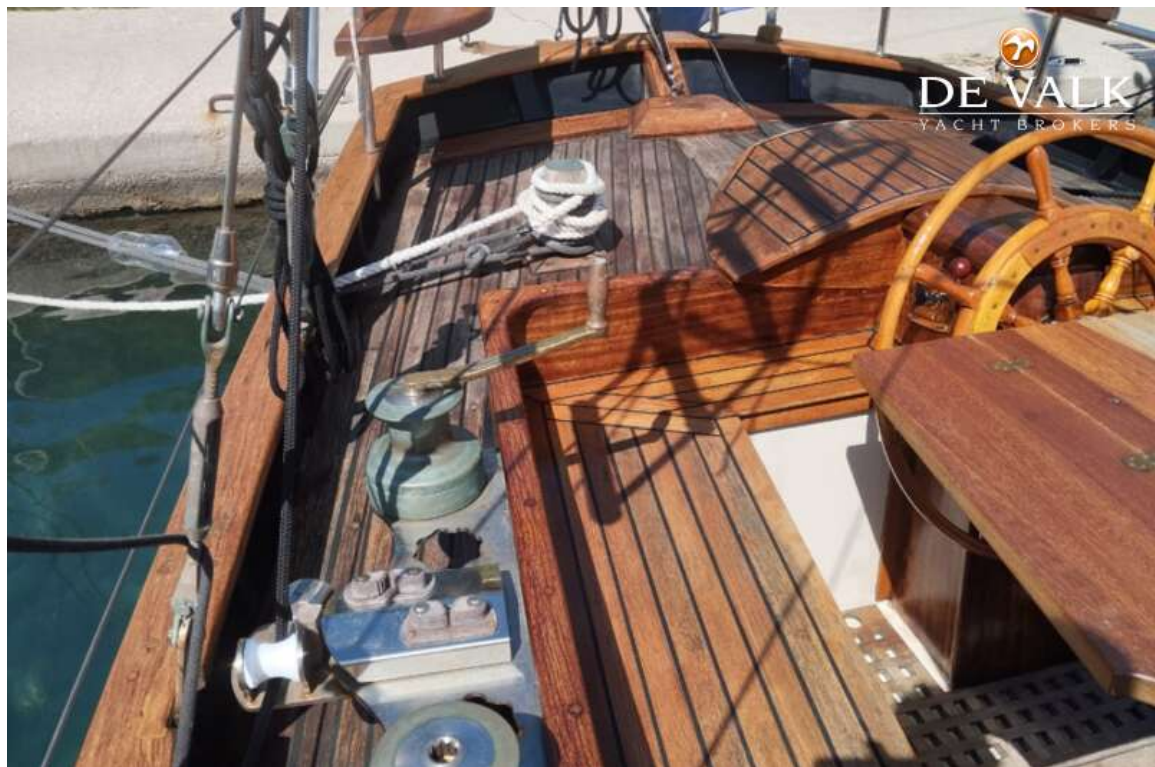
ALDEN 44,6 KETCH



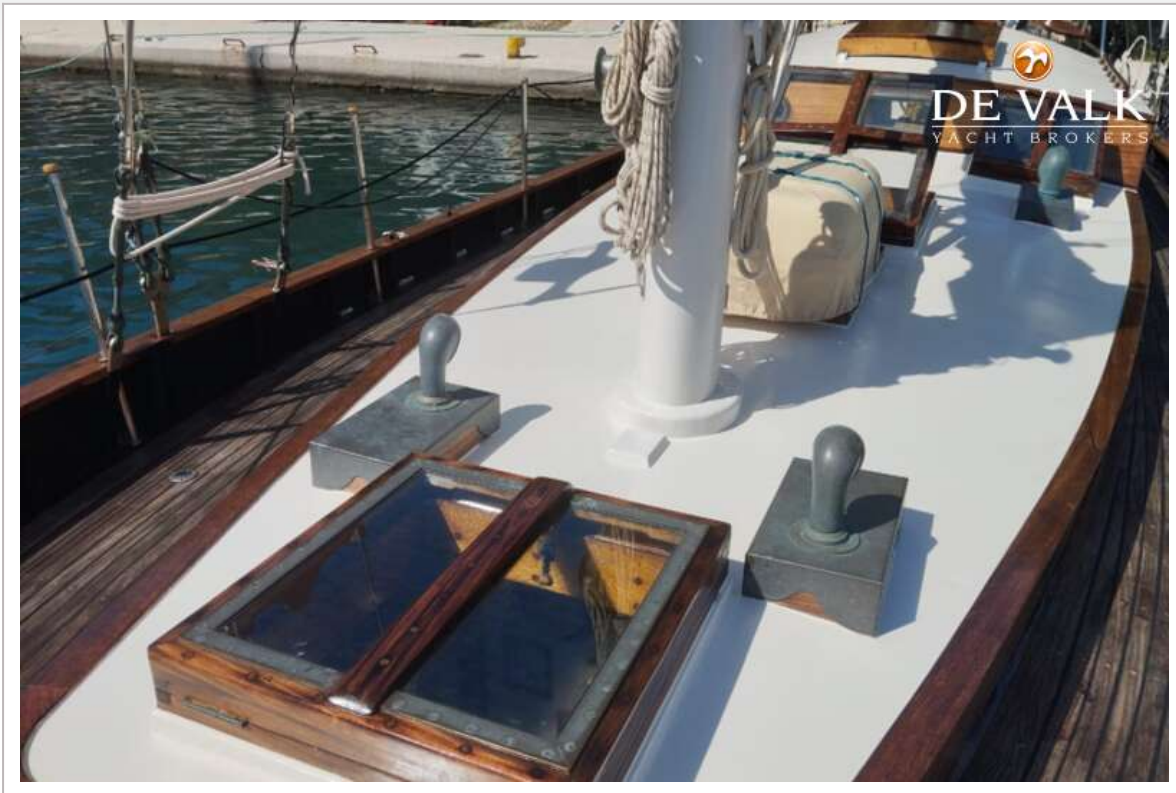
ALDEN 44,6 KETCH



ALDEN 44,6 KETCH



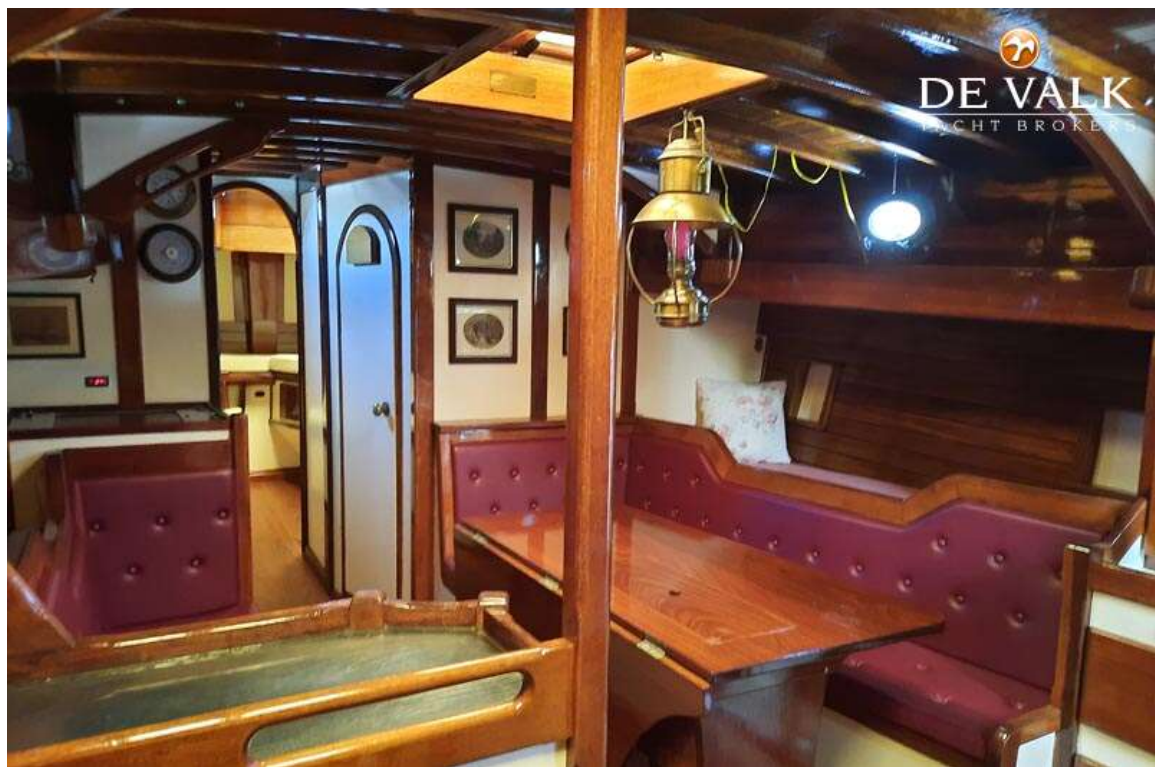
ALDEN 44,6 KETCH



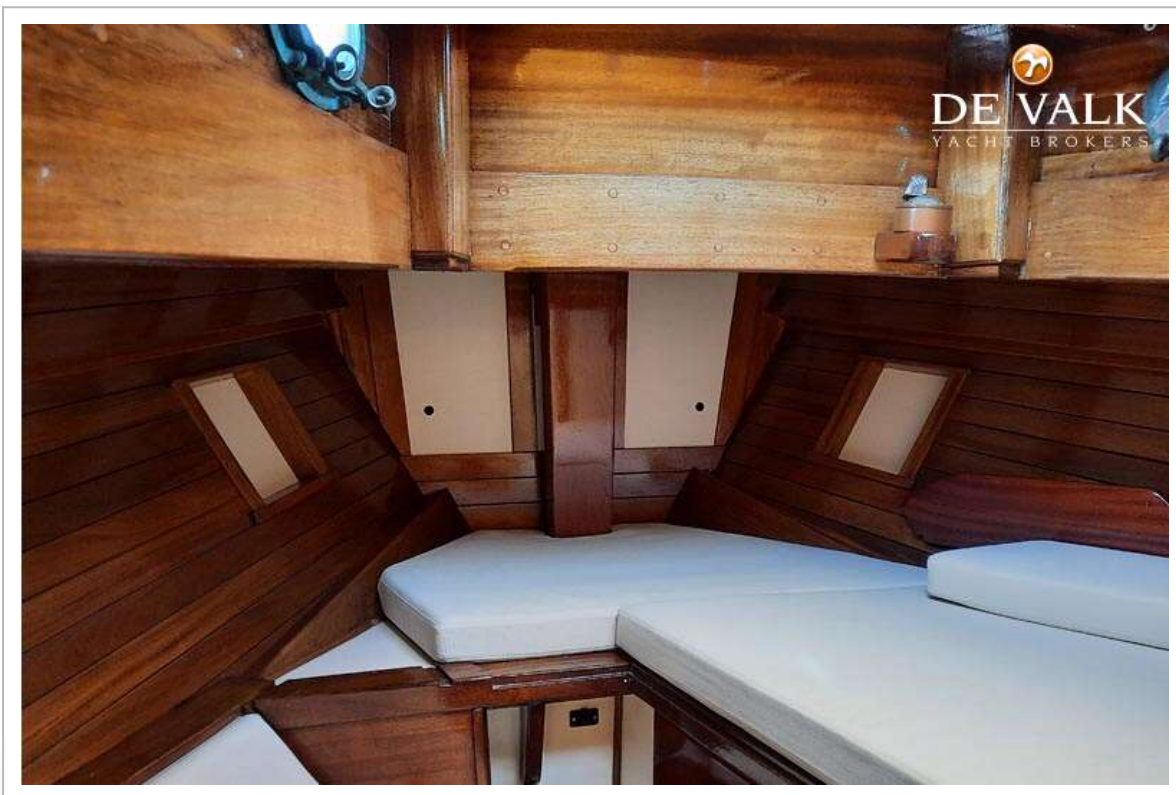
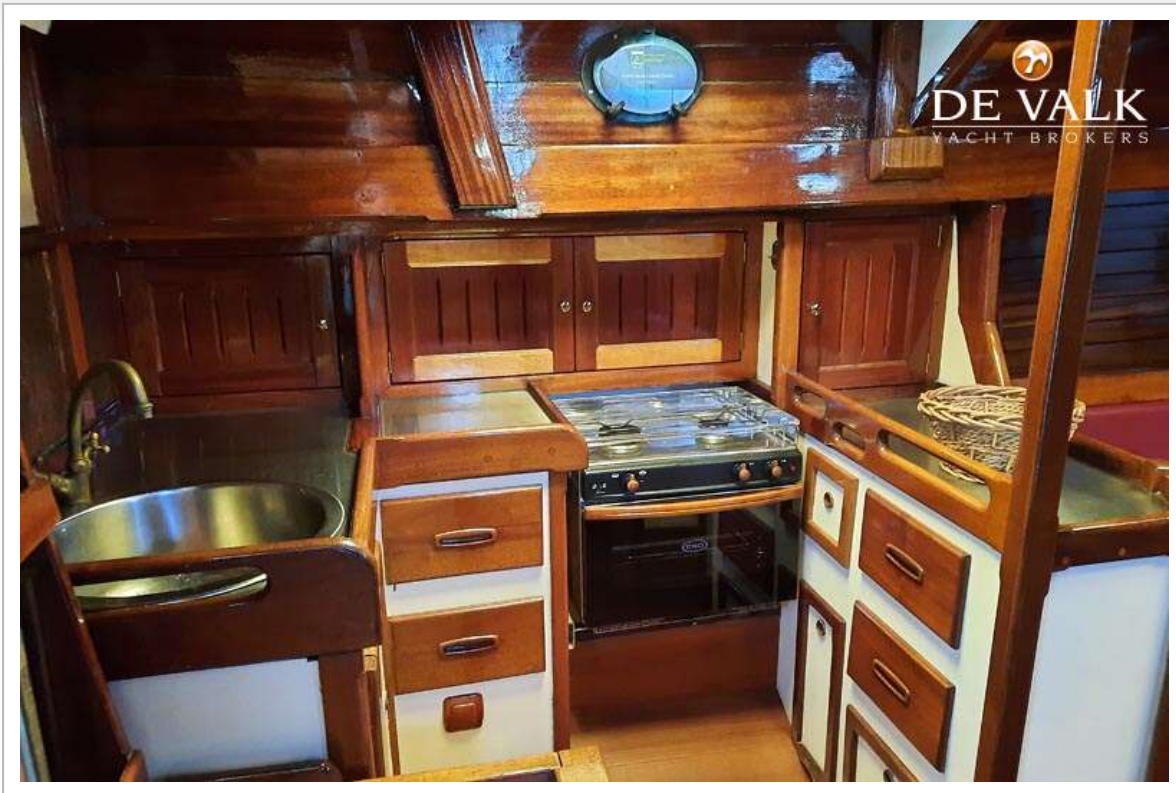
ALDEN 44,6 KETCH



ALDEN 44,6 KETCH



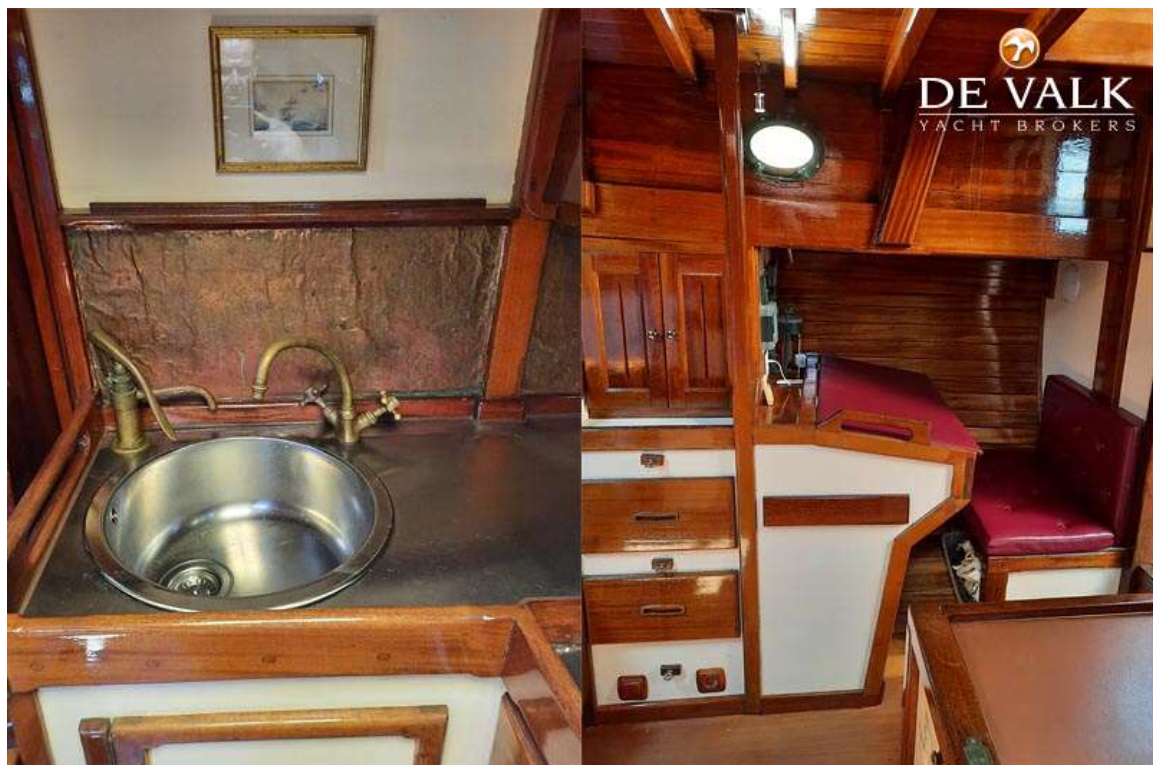
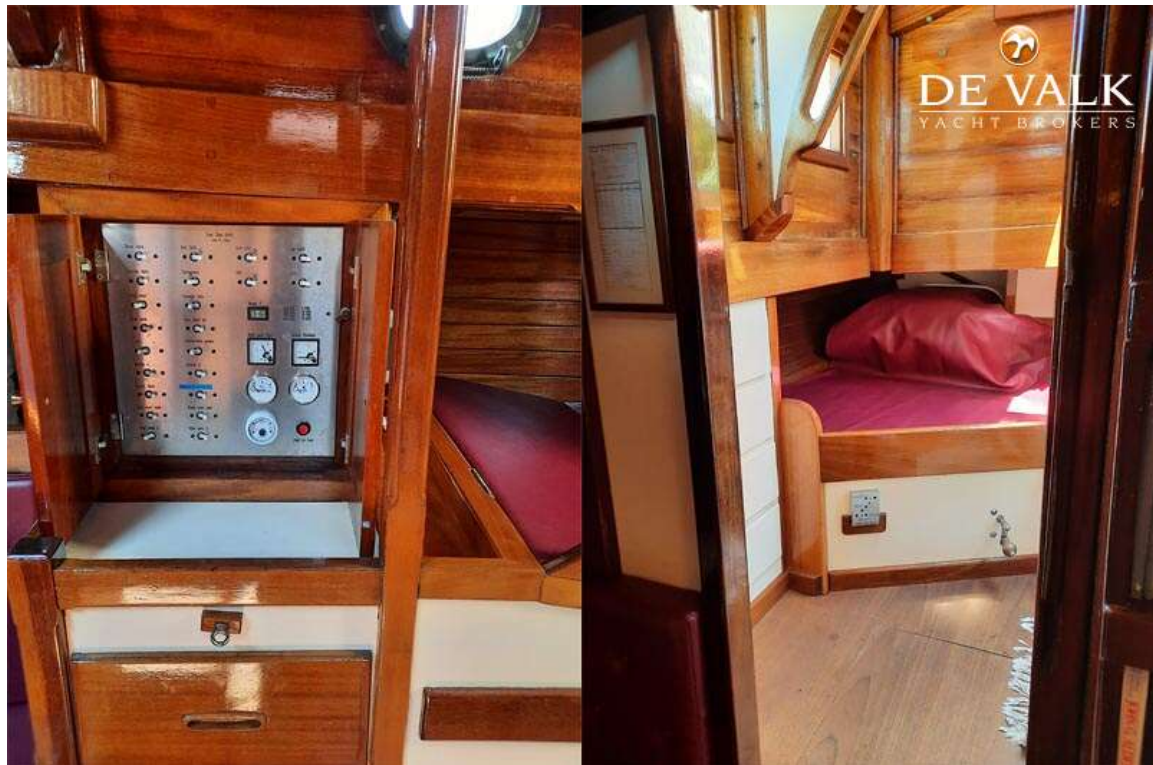
ALDEN 44,6 KETCH



ALDEN 44,6 KETCH



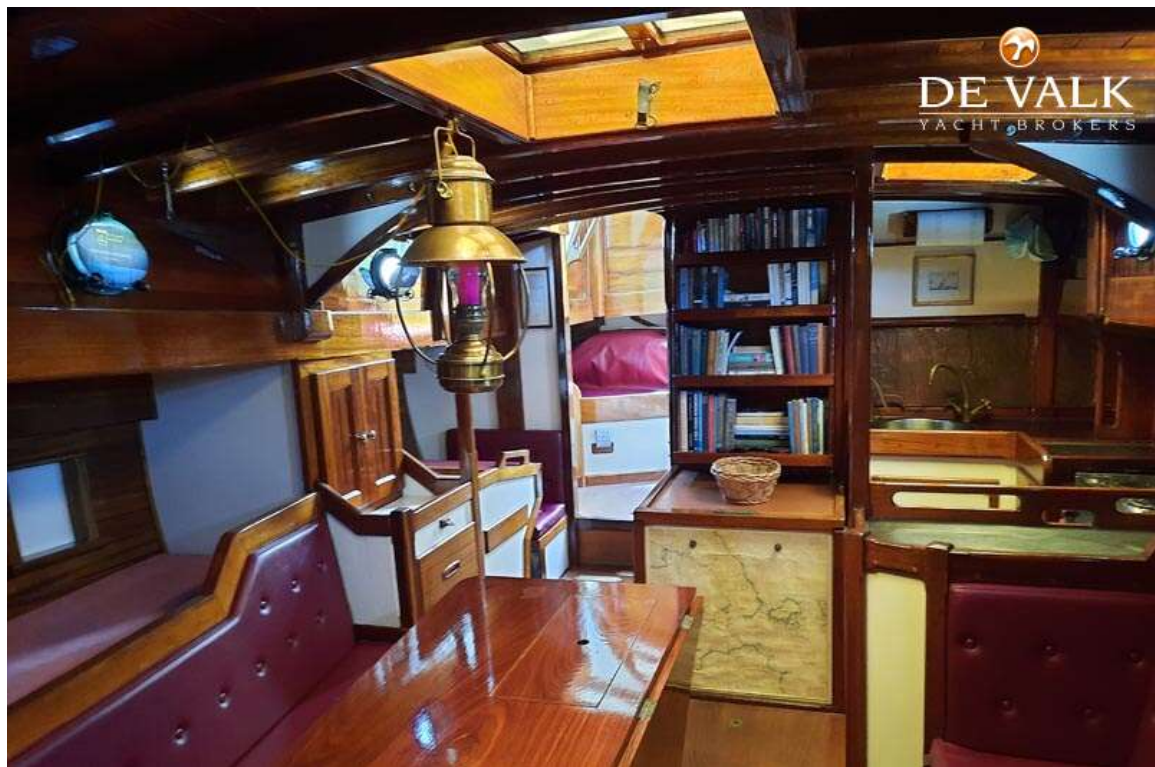
ALDEN 44,6 KETCH



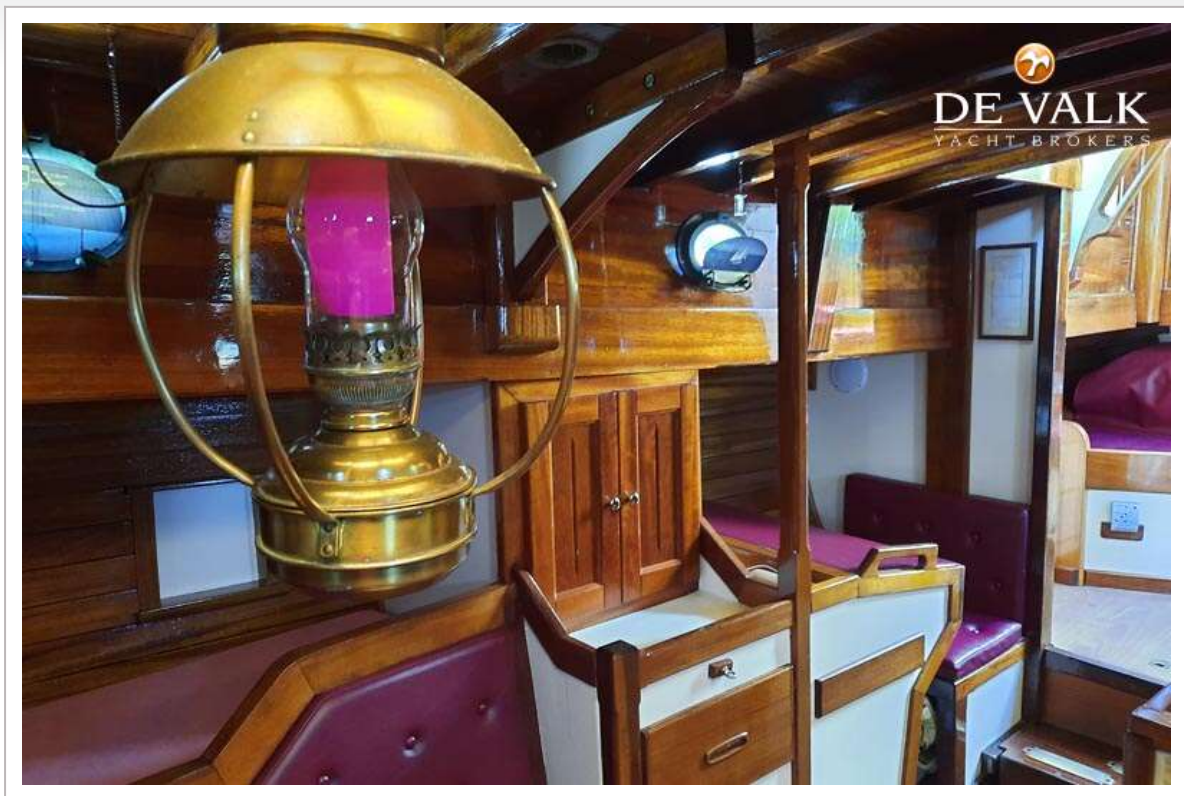
ALDEN 44,6 KETCH



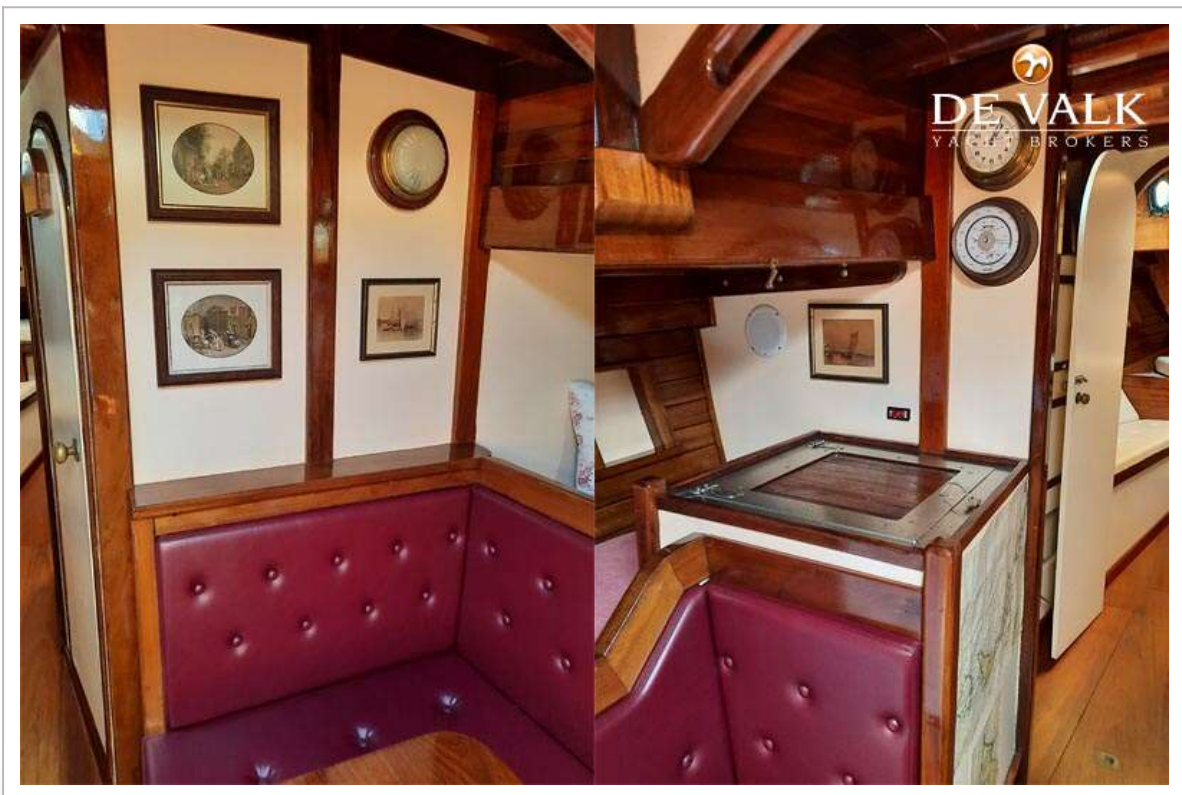
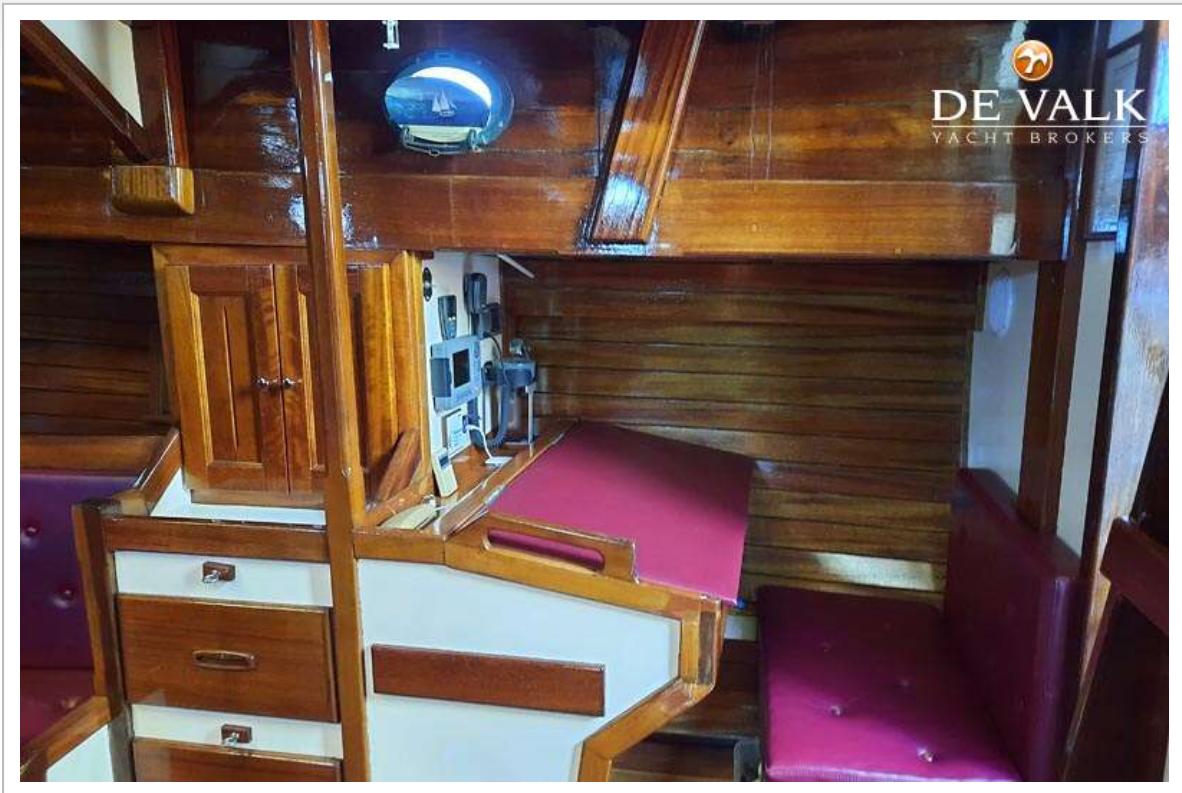
ALDEN 44,6 KETCH



ALDEN 44,6 KETCH



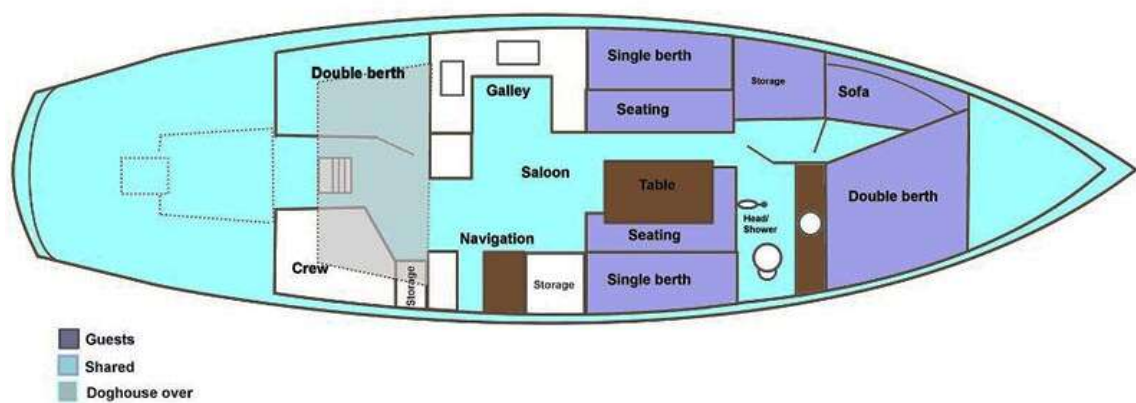
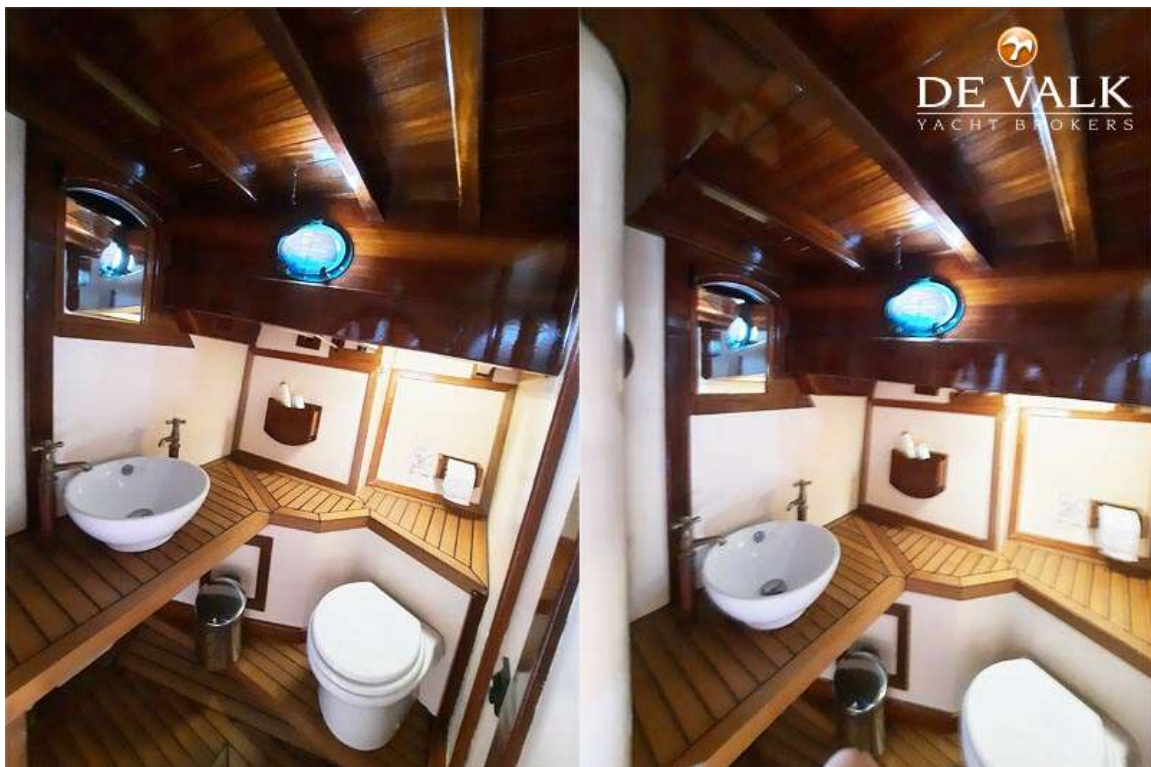
ALDEN 44,6 KETCH



ALDEN 44,6 KETCH



ALDEN 44,6 KETCH



ALDEN 44,6 KETCH

