



OOSTVAARDER 1100 OK



DE VALK
YACHT BROKERS

BROKER'S COMMENTS

Charming typical Dutch open cockpit trawler style motor yacht. This canoe stern design will attract a lot interest from the couples that decide to quit sailing and want to explore the European inland and coastal waterways. She has a nice deep cockpit with ample storage below the cockpit floor and lazarettes and it is an easy step onto the wide walkway towards the bow area. The pilothouse/decksalon has lots windows (4 of them can be opened) so you have a nice 360 degree view. Ample 2+2 accommodations and nicely fitted classic teak interior. Launched 2017, low hours and well maintained.

Marc Weijenberg

SPECIFICATIONS

Dimensions	11.25 x 3.95 x 1.05 (m)	Builder	Jachtwerf Oost & Smelne Yachtcenter
Built	2016	Cabins	1
Material	Steel	Berths	4
Engine(s)	1 x Yanmar 4JH4-MHTE diesel	Hp/Kw	75.00 (hp), 55.20 (kw)
Asking price	sold (VAT)	Lying	elsewhere / Not at sales office

CONTACT

Sales office	De Valk Thuishaven	Telephone	+31 35 5829042
Address	Peperstraat 7 1411 PX Naarden NL	E-mail	thuishaven@devalk.nl

DISCLAIMER

These particulars are given in good faith as supplied but cannot be guaranteed.



GENERAL

Model	OOSTVAARDER 1100 OK
Type	motor yacht
LOA (m)	11,25
Beam (m)	3,95
Draft (m)	1,05
Air draft min (m)	2,80
Headroom (m)	2,00
Year built	2016
Launched	2017
Builder	Jachtwerf Oost & Smelne Yachtcenter
Country	The Netherlands
Designer	Jan Visser Yachtdesign
Displacement (t)	12,5
CE norm	B
Hull material	steel
Hull colour	brown
Hull thickness (mm)	hull 10-5 mm, deck and superstructure 4mm
Hull shape	hard chine
Superstructure material	steel
Rubbing strake	stainless steel
Deck material	steel
Deck finish	non-skid paint
Cockpit deck finish	synthetic teak Flexi-teak
Window frame	aluminium Gebo
Window material	tempered glass Gebo stalite, tinted
Deckhatch	1 x (+ Oceanair blind-cassette)
Portholes	aluminium 6 x (can be opened)
Insulation	Resifoam + Cork
Mast can be lowered	electric
Fuel tank (litre)	steel 2 x 255



Level indicator (fuel tank)	yes
Freshwater tank (litre)	stainless steel 1 x 380
Level indicator (freshwater)	yes
Blackwater tank (litre)	1 x 200
Blackwater tank extraction	deck extraction + pump
Wheel steering	hydraulic
Emergency tiller	yes
More info on paintwork	Alexseal 2comp system + epoxy primer

ACCOMMODATION

Cabins	1
Berths	4
Interior	teak
Floor	carpet
Open cockpit	yes
Pilot house/deck saloon	with L-shape settee
Saloon	In the salon is a "fold-up/down navigator seat" prepared.
Headroom saloon (m)	2,00
Heating	diesel ducted hot air Eberspaecher D5L
Dinette	headroom 2 mtr
Dinette to convert into berth	2,00 x 1,20 mtr
Opening door to cockpit	solid teak
Galley	yes
Countertop	plastic
Sink	stainless steel 1 x
Cooker	calor gas 4-burner
Fridge	Vitrifrigo (12v)
Hot water system	220V + engine Isothemp 40 ltr
Water pressure system	electrical
Owners cabin	v-bed
Bed length (m)	2,00 x 0,85 mtr with fill-in piece and 2 mtr headroom



Wardrobe	hanging and shelves
Bathroom	shared
Toilet	shared
Toilet system	electric Vetus Planus
Wash basin	in the bathroom
Shower	shared
Extra info	Light and open, well ventilated interior with lots of opening windows, portholes and deckhatch.
Extra info	Truma remote calor gas shut-off valve. LED interior lighting

MACHINERY

No of engines	1
Make	Yanmar
Type	4JH4-MHTE
HP	75
kW	55,20
Fuel	diesel
Year installed	2016
Maximum speed (kn)	8
Cruising speed (kn)	6
Consumption (l/hr)	4
Engine hours	245
Engine cooling system	freshwater heat exchanger
Drive	shaft
Shaft seal	yes
Engine controls	bowden cable
Gearbox	ZF
Bowthruster	electric Vetus 5,7kW
Exhaust	watercooled
Thrust bearing	Aquadrive
Propeller type	fixed



Propeller blades	4
Propeller shaft material	stainless steel
Shaft lubrication	water
Electric bilge pump	2 x
Electrical installation	12v/220v
Start battery	1 x (2021)
Service battery	2 x 230ah (2021)
Bowthruster battery	2 x Optima (2019)
Battery monitor	Victron BMV-702
Battery charger/inverter	12v/1600watt/70amp Victron Multiplus Compact
Solar panel	2 x 185watt + Islander optimizer
Diode battery combiners	yes
Shorepower	with cable

NAVIGATION

Electric compass	Garmin
Depth sounder	Garmin
VHF	Garmin 315i (2019)
VHF handheld	Icom
Autopilot	+ remote controller Garmin GHC20
Rudder angle indicator	via autopilot
Plotter/GPS	Garmin GPSMap 721XS
Electronic chart(s)	1 x
AIS transponder	Garmin AIS800
Navigation lights	yes

EQUIPMENT

Cockpit cushions	yes
Bathing platform	yes
Boarding ladder	yes
Anchor	CQR Plough Stainless steel / RVS / Nirosta



Anchor chain	Stainless steel / RVS / Nirosta 30 mtr
Windlass	electrical Vetus Tiger 12v/1000watt
Capstan	Vetus
Sea railing	wire
Grab rail (superstructure)	stainless steel
Railing side opening gates	2 x
Pushpit	with Davit-base welded in
Pulpit	yes
Wiper	4 x
Horn	electric
Fenders	yes
Mooring lines	yes
Radio-cd player	yes
Speakers in salon	yes
Fire extinguisher	2 x
Extinguisher in engine room	1 x
Extra info	2 x gasbottle







OOSTVAARDER 1100 OK

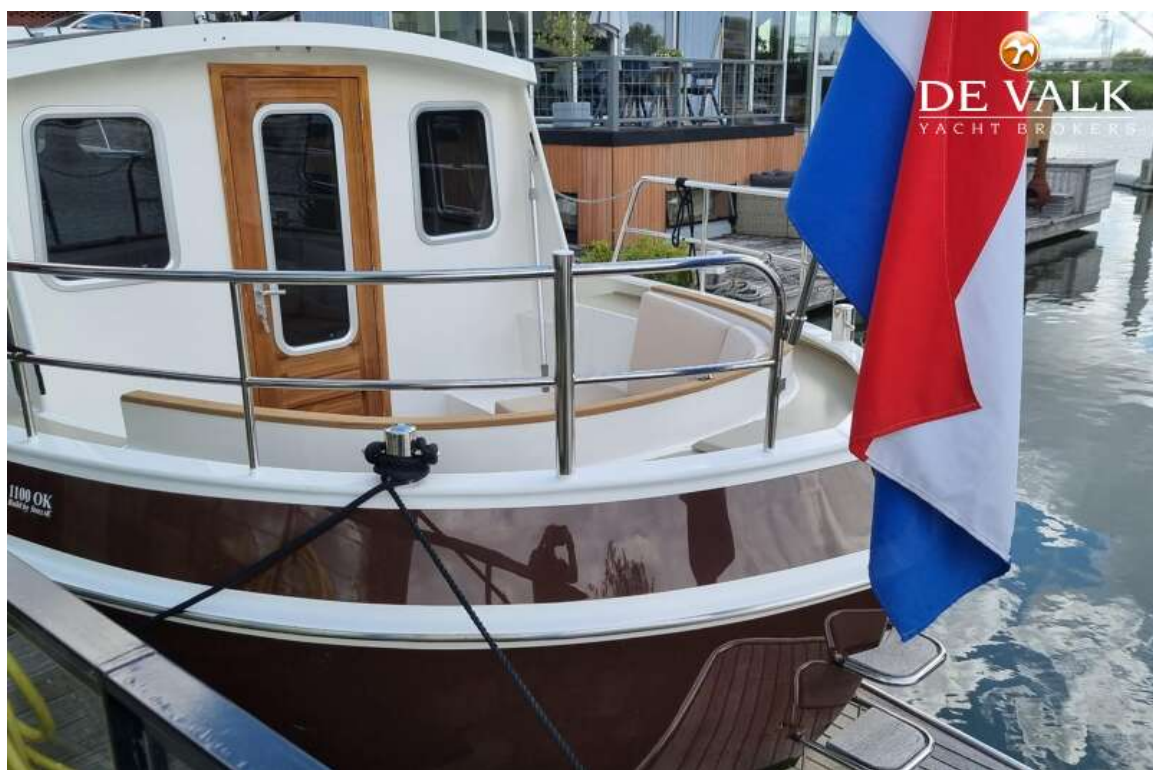


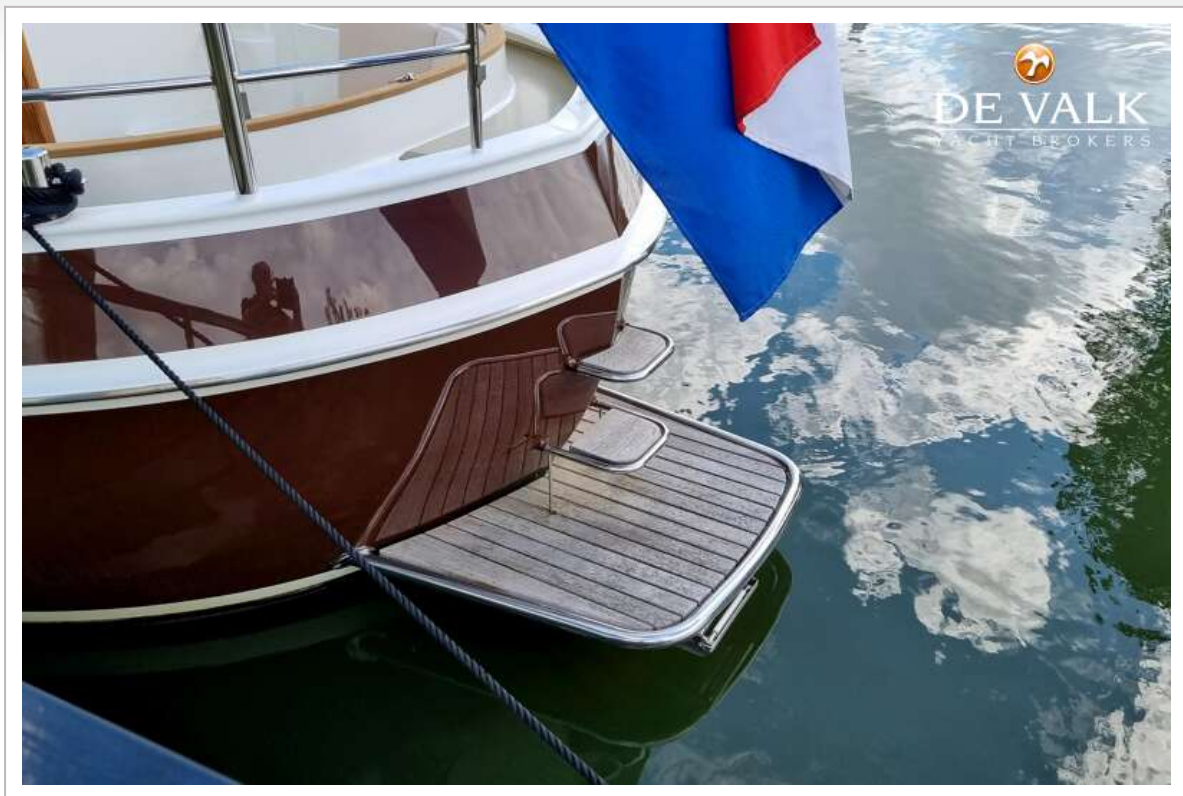


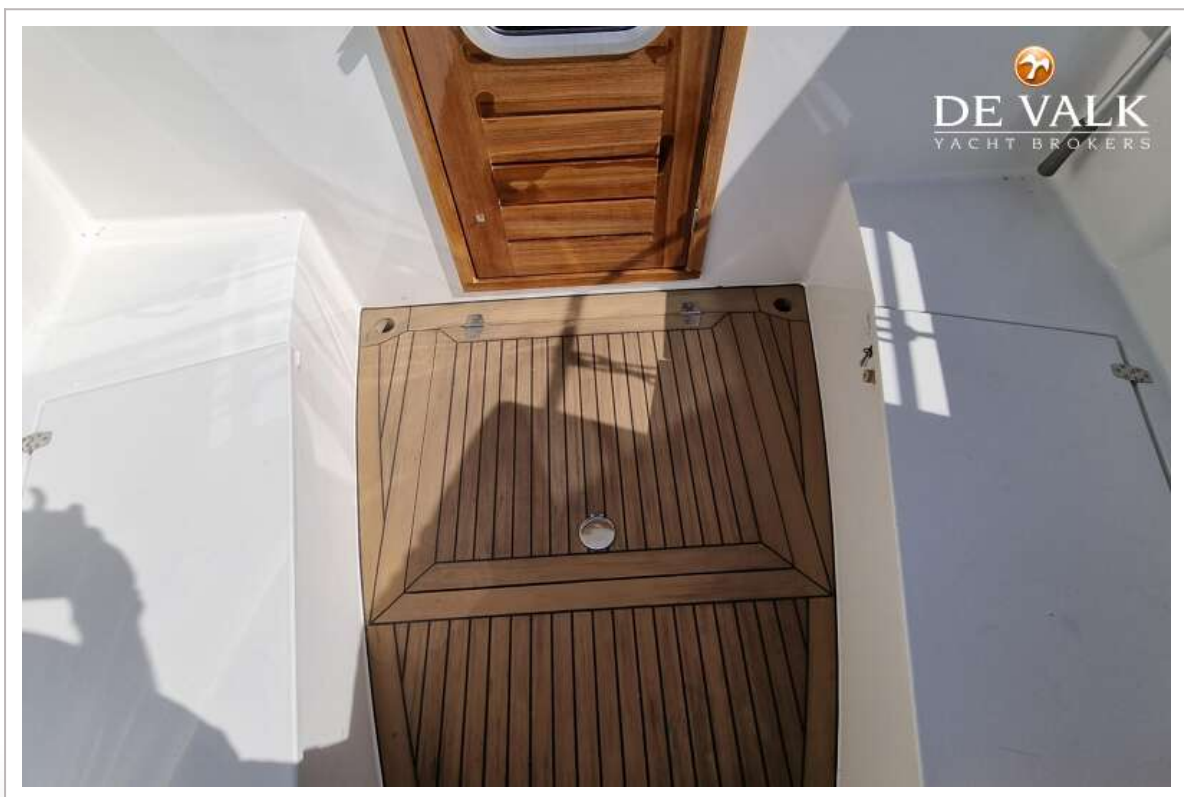
OOSTVAARDER 1100 OK

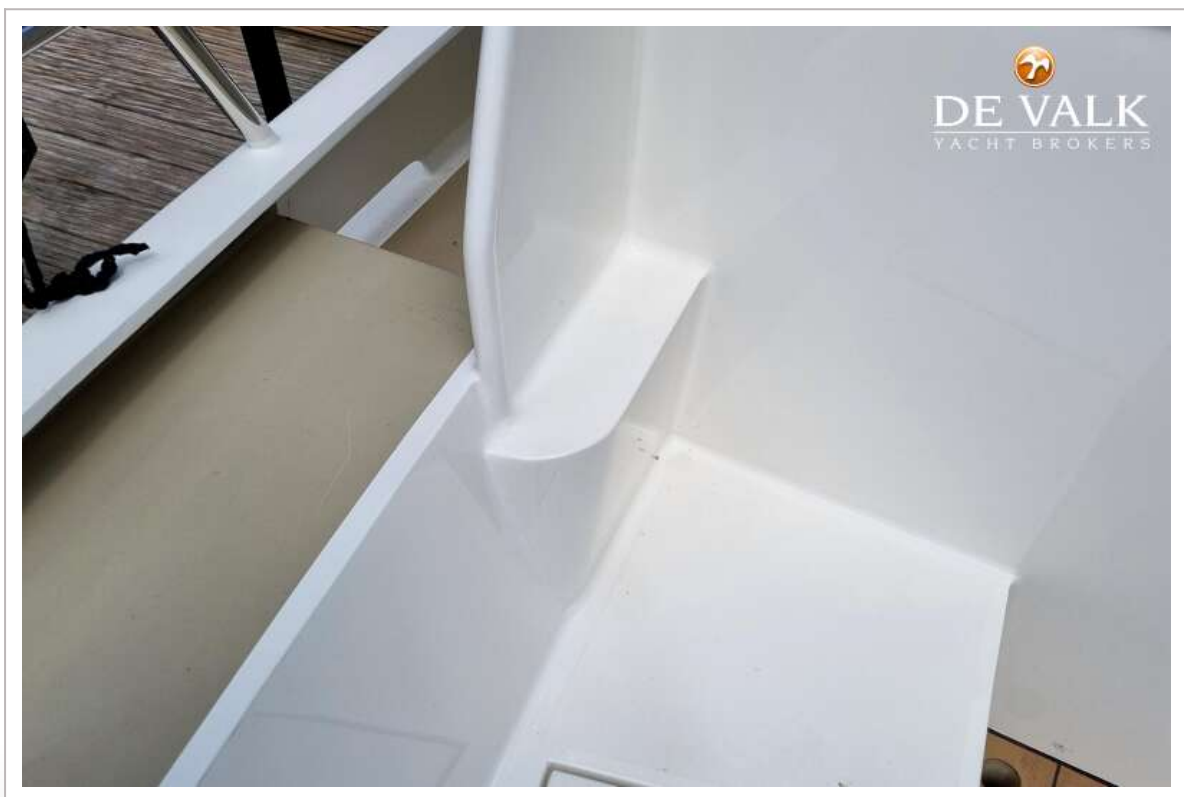


OOSTVAARDER 1100 OK







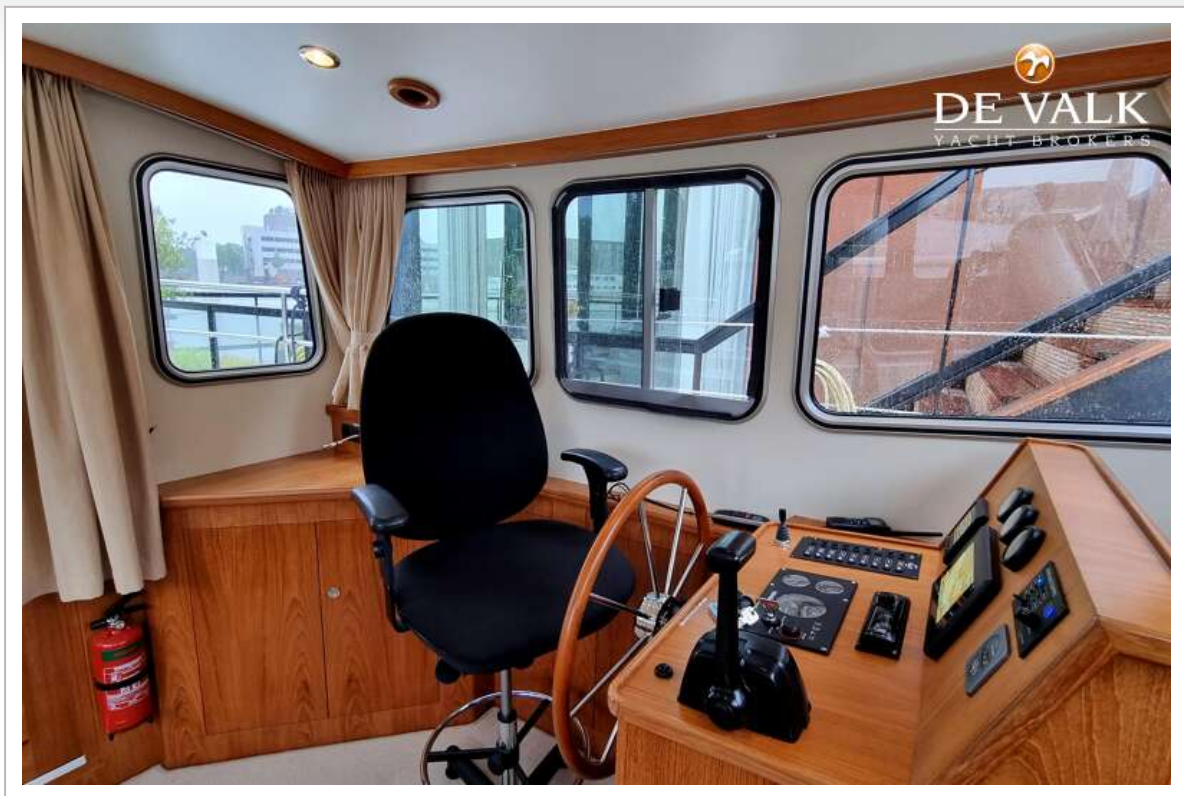


OOSTVAARDER 1100 OK

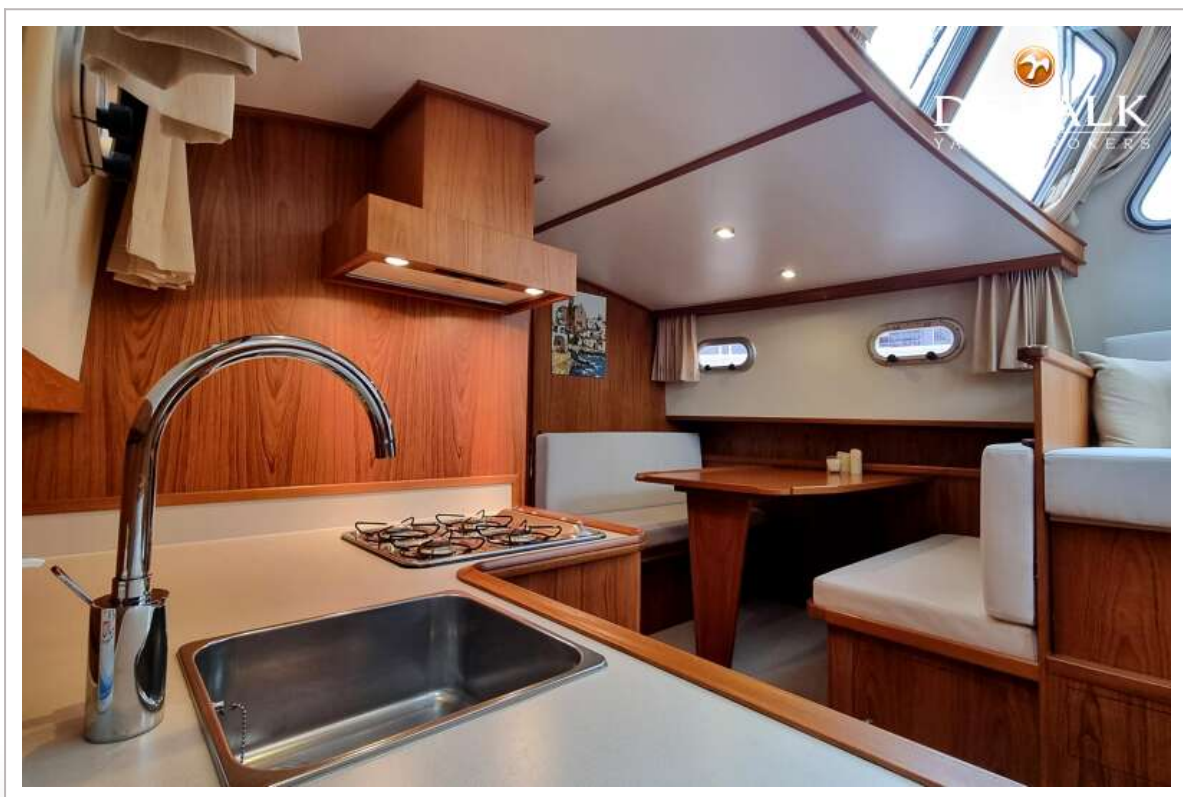


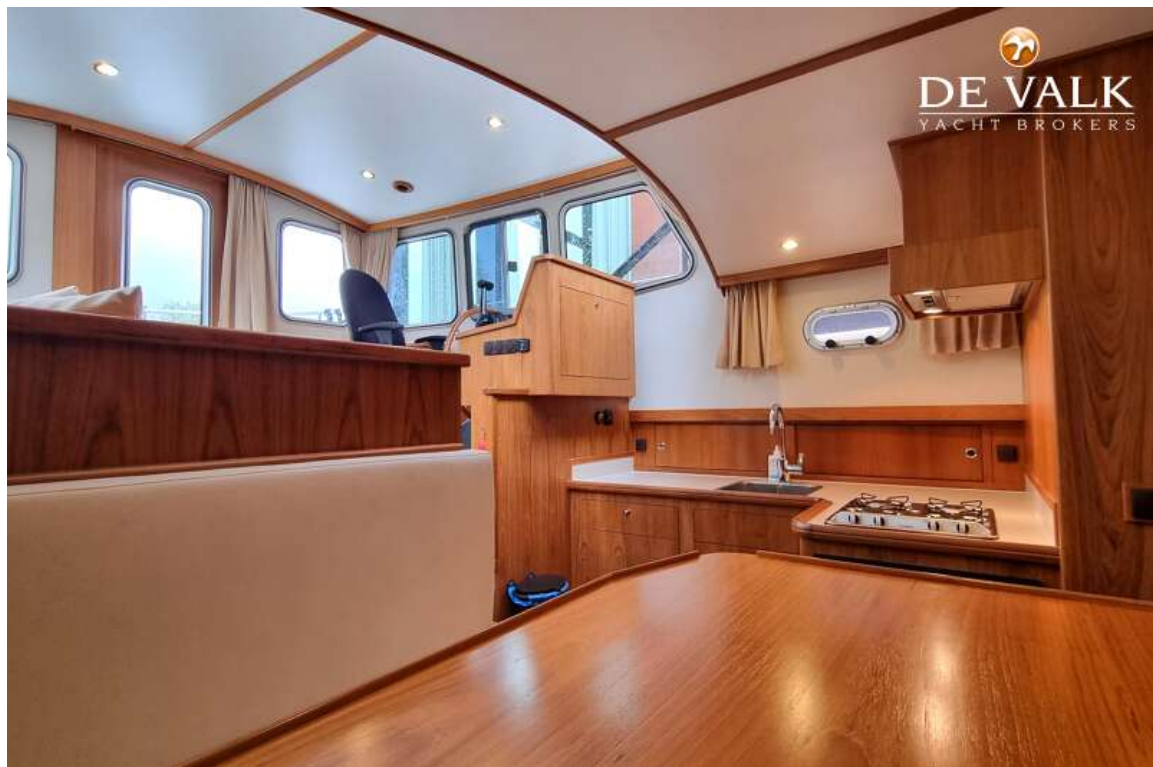
OOSTVAARDER 1100 OK





OOSTVAARDER 1100 OK





OOSTVAARDER 1100 OK

