



DE VALK  
YACHT BROKERS



## GALEON 390 FLY



DE VALK  
YACHT BROKERS

# GALEON 390 FLY

## BROKER'S COMMENTS

Well maintained and fully equipped Galeon 390 Flybridge from 2007, Good accommodation with many conveniences, both below and above deck. There is a steering position on top of the flybridge and downstairs in the main cabin. Enough space to relax, eat and cook. With a Webasto heating and a separate shower and toilet, a spacious owner's cabin and 3 extra berths divided over two cabins, this is an ideal motor yacht for longer trips. The 2 Volvo Penta D4 200 EVC engines provide more than enough power for pleasant and fast cruising. Have you become enthusiastic? We will be pleased to help you!

*Clemens van der Veld*

## SPECIFICATIONS

<b>Dimensions</b>	11.76 x 3.72 x 0.81 (m)	<b>Builder</b>	Galeon Sp.z.o.o. Sp.K., Strazyn
<b>Built</b>	2007	<b>Cabins</b>	3
<b>Material</b>	GRP	<b>Berths</b>	5
<b>Engine(s)</b>	2 x Volvo Penta D4 -200 EVC diesel	<b>Hp/Kw</b>	2 x 199.00 (hp), 146.46 (kw)
<b>Asking price</b>	sold (VAT )	<b>Lying</b>	elsewhere / Not at sales office

## CONTACT

<b>Sales office</b>	De Valk Monnickendam B.V.	<b>Telephone</b>	+31 (0)299 65 63 50
<b>Address</b>	Hoogedijk 6 1145 PM Katwoude NL	<b>E-mail</b>	monnickendam@devalk.nl

## DISCLAIMER

These particulars are given in good faith as supplied but cannot be guaranteed.



# GALEON 390 FLY

## GENERAL

<b>Model</b>	GALEON 390 FLY
<b>Type</b>	motor yacht
<b>LOA (m)</b>	11,76
<b>Beam (m)</b>	3,72
<b>Draft (m)</b>	0,81
<b>Air draft (m)</b>	4,50
<b>Year built</b>	2007
<b>Builder</b>	Galeon Sp.z.o.o. Sp.K., Strazyn
<b>Country</b>	Poland
<b>Designer</b>	Tony Castro / Roberto Curtò
<b>Displacement (t)</b>	9,5
<b>CE norm</b>	B
<b>Hull material</b>	GRP
<b>Hull colour</b>	white
<b>Hull shape</b>	deep-V
<b>Superstructure material</b>	GRP
<b>Rubbing strake</b>	stainless steel
<b>Deck material</b>	GRP
<b>Deck finish</b>	teak
<b>Superstructure deck finish</b>	non-skid moulded in
<b>Cockpit deck finish</b>	teak Including flybridge
<b>Antifouling (year)</b>	2021 / 5 Layers of VCtar / 2 layers of VC 17
<b>Window material</b>	polycarbonate
<b>Deckhatch</b>	1x
<b>Portholes</b>	stainless steel 6 x in hull
<b>Flybridge</b>	yes
<b>Flybridge cockpit cover</b>	yes
<b>Fuel tank (litre)</b>	990
<b>Freshwater tank (litre)</b>	550
<b>Blackwater tank (litre)</b>	150



Greywater tank (litre)	250
Wheel steering	yes
Inside helm position	yes
Flybridge helm position	yes

## ACCOMMODATION

Cabins	3
Berths	5
Interior	mahogany
Floor	carpet
Saloon	yes
Heating	Webasto Air Top 3500
Dinette	yes
Sliding door to aft deck	yes
Galley	yes
Countertop	corian
Sink	yes
Cooker	methylated spirit Obigo, 2 burner
Fridge	with freezer compartment Isotherm
Hot water system	220V + engine
Water pressure system	electrical
Owners cabin	double bed
Wardrobe	drawers and shelves
Bathroom	shared
Toilet	separate
Toilet system	electric
Wash basin	at the toilet
Shower	shared
Extra info	Deluxe mattress
Guest cabin 1	double bed
Guest cabin 2	single bed



# GALEON 390 FLY

## Extra info

Leather upholstery salon

## MACHINERY

No of engines	2
Make	Volvo Penta
Type	D4 -200 EVC
HP	199
kW	146.46
Fuel	diesel
Year installed	2007
Maximum speed (kn)	24
Cruising speed (kn)	9
Engine hours	450
Drive	Z-drive
Bowthruster	electric Side-Power SP75ti
Batteries	4
Battery charger	Victron Centaur 12V 60AMP
Shorepower	yes

## NAVIGATION

Compass	yes
Multi control display	yes
Autopilot	Flybridge and Salon
Rudder angle indicator	yes
Plotter/GPS	Axiom 12 Real Vision (2021)
Navigation lights	yes

## EQUIPMENT

Fixed windscreen	yes
Cockpit cushions	yes



# GALEON 390 FLY

Cockpit table	yes
Cockpit chairs	1 driver seat
Bathing platform	yes
Boarding ladder	yes
Transom door	yes
Deck shower	yes
Anchor	yes
Anchor chain	30 meters
Windlass	Quick
Deck wash	yes
Sea railing	yes
Grab rail (superstructure)	yes
Pulpit	yes
Lifejackets	yes
Wiper	yes
Horn	yes
Fenders	yes
Mooring lines	yes
TV	yes
Radio-cd player	Alpine IVE-W535BT
Cockpit speakers	Flybridge
Speakers in salon	yes
Extinguisher in engine room	yes
Extra info	Sea Fire 131-200 Automatic engine shutdown system





# GALEON 390 FLY





# GALEON 390 FLY

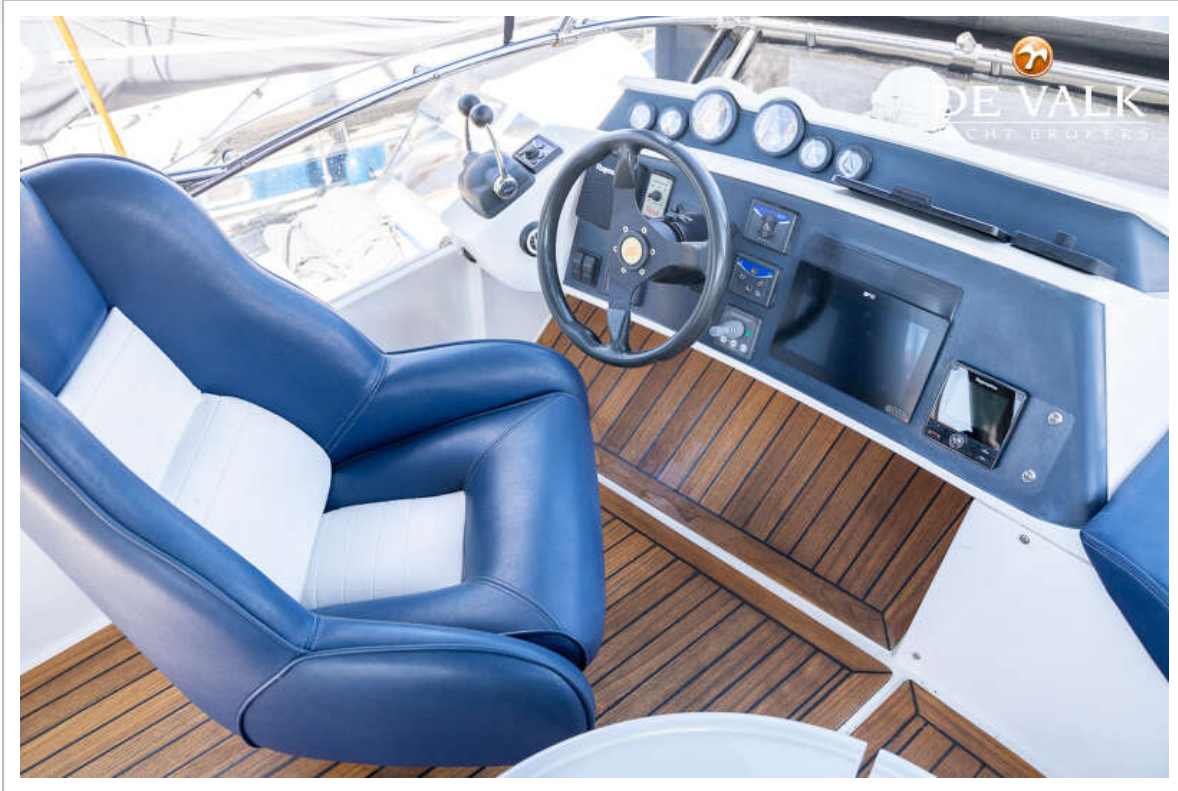




# GALEON 390 FLY

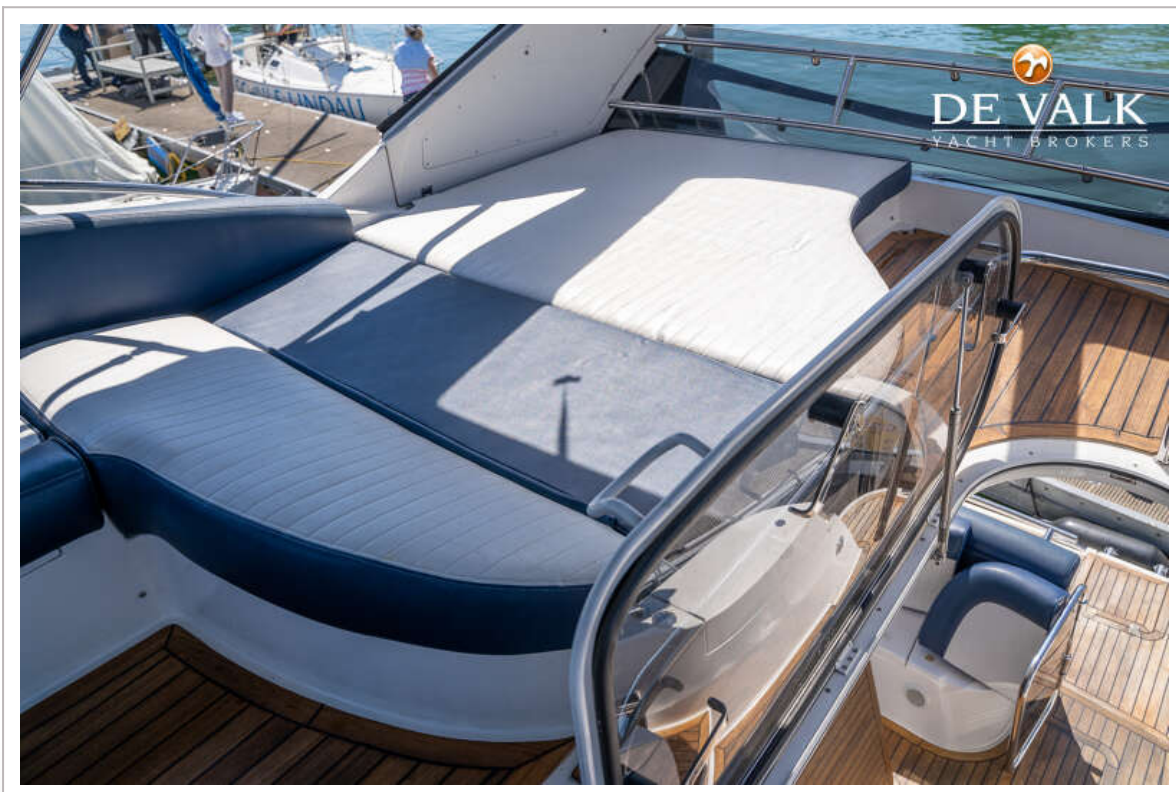


# GALEON 390 FLY





# GALEON 390 FLY

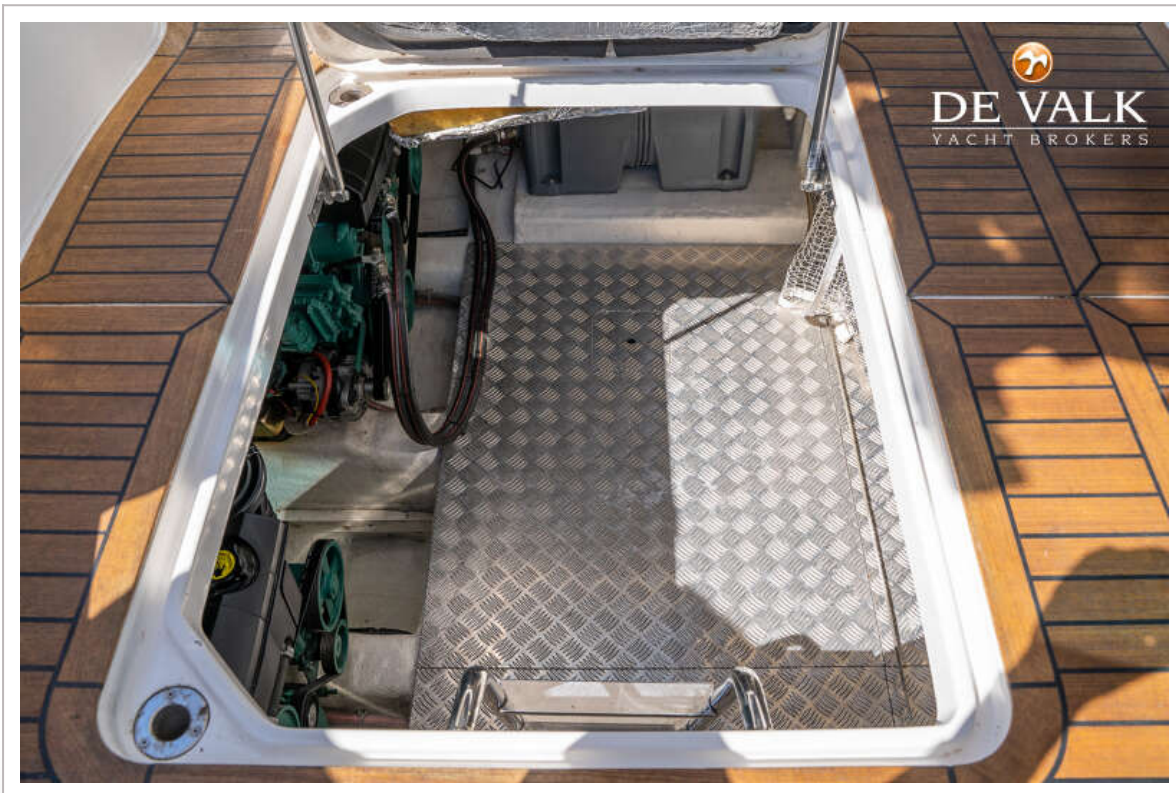


# GALEON 390 FLY





# GALEON 390 FLY

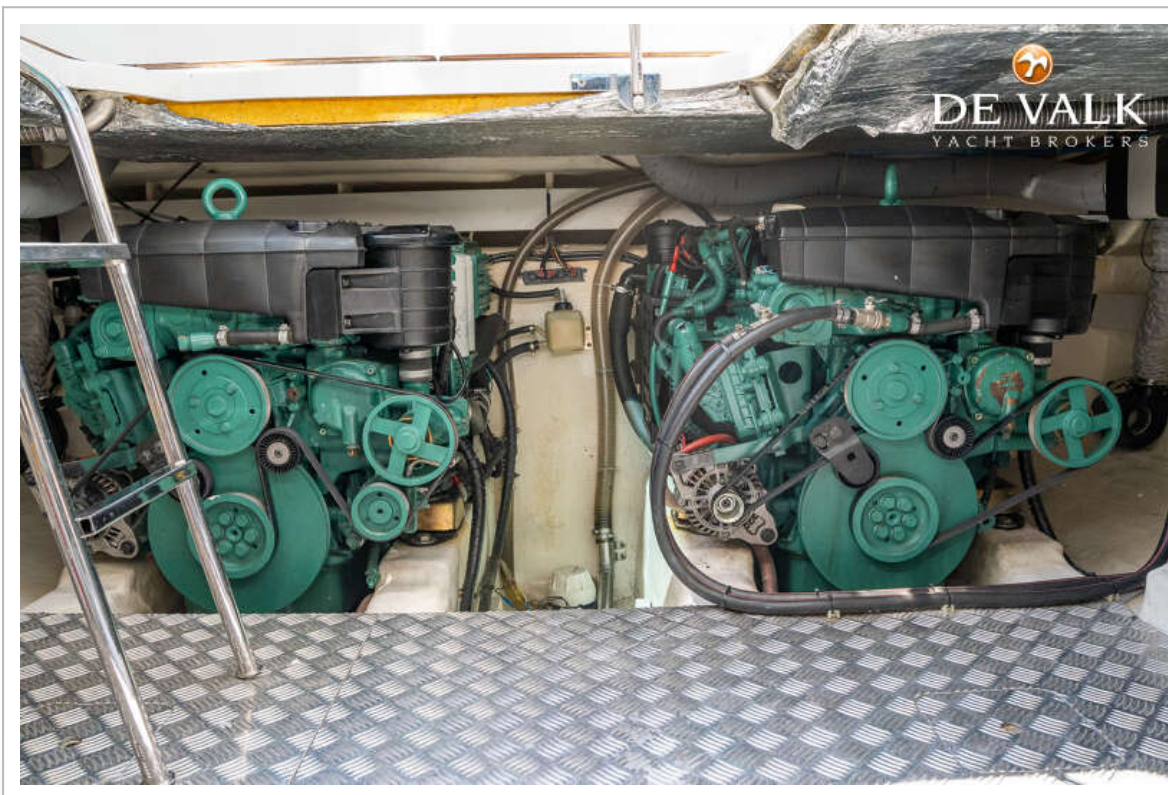
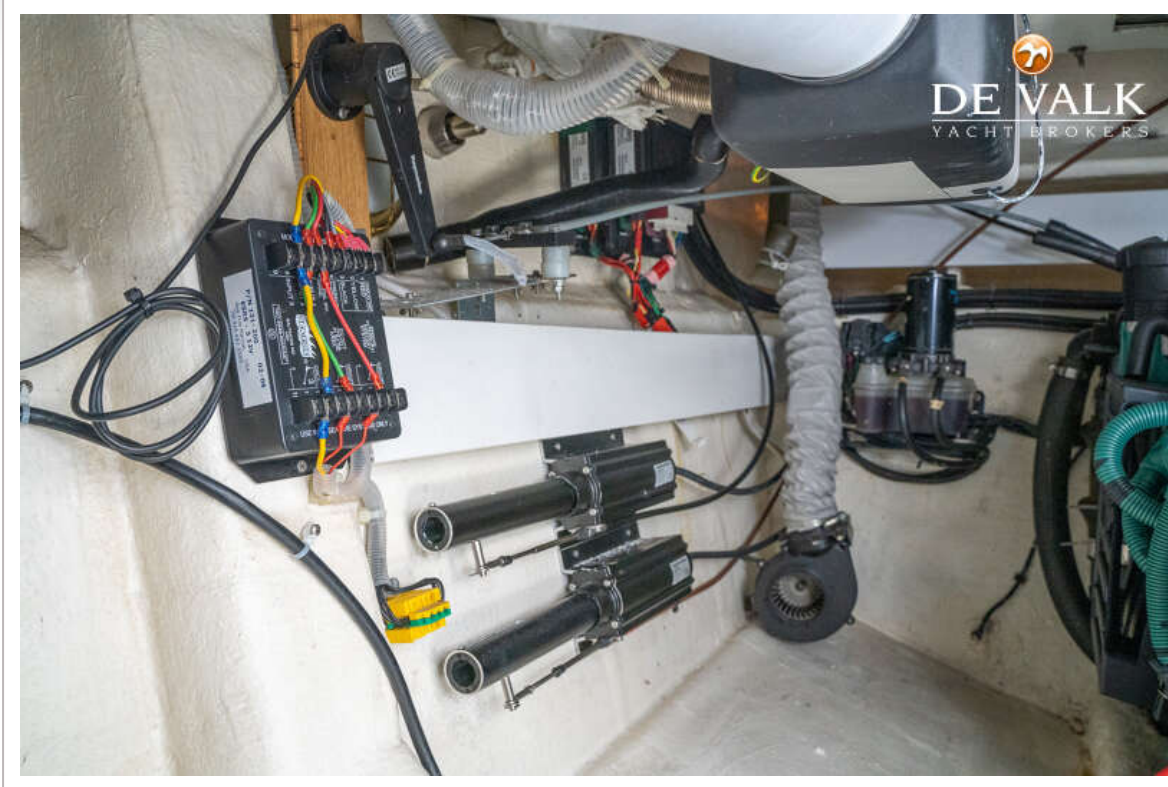


# GALEON 390 FLY

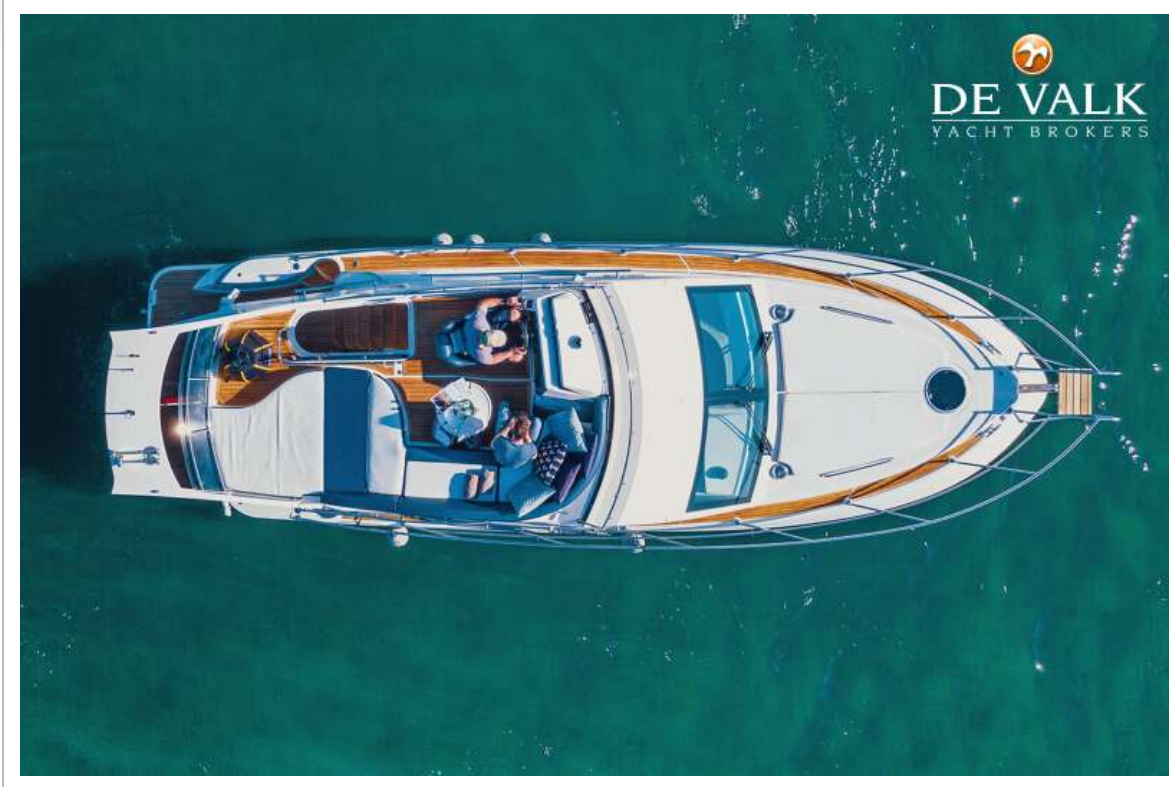




# GALEON 390 FLY

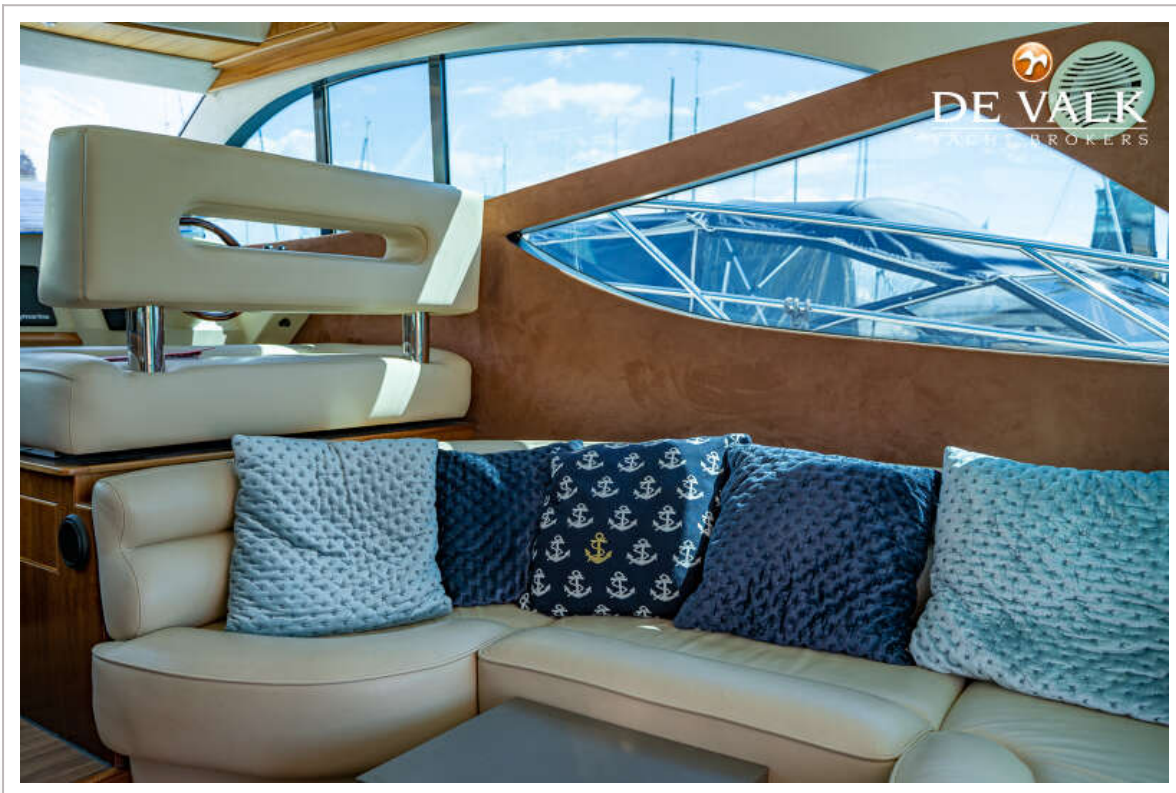
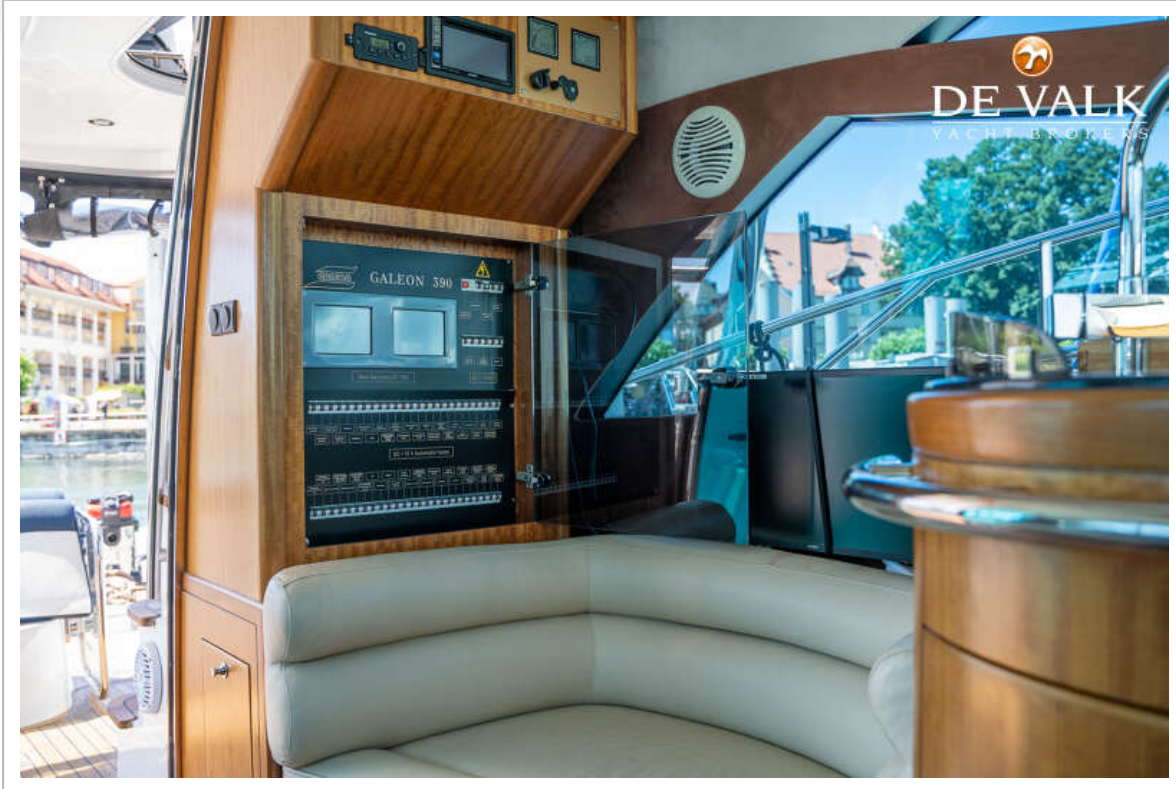


# GALEON 390 FLY





# GALEON 390 FLY

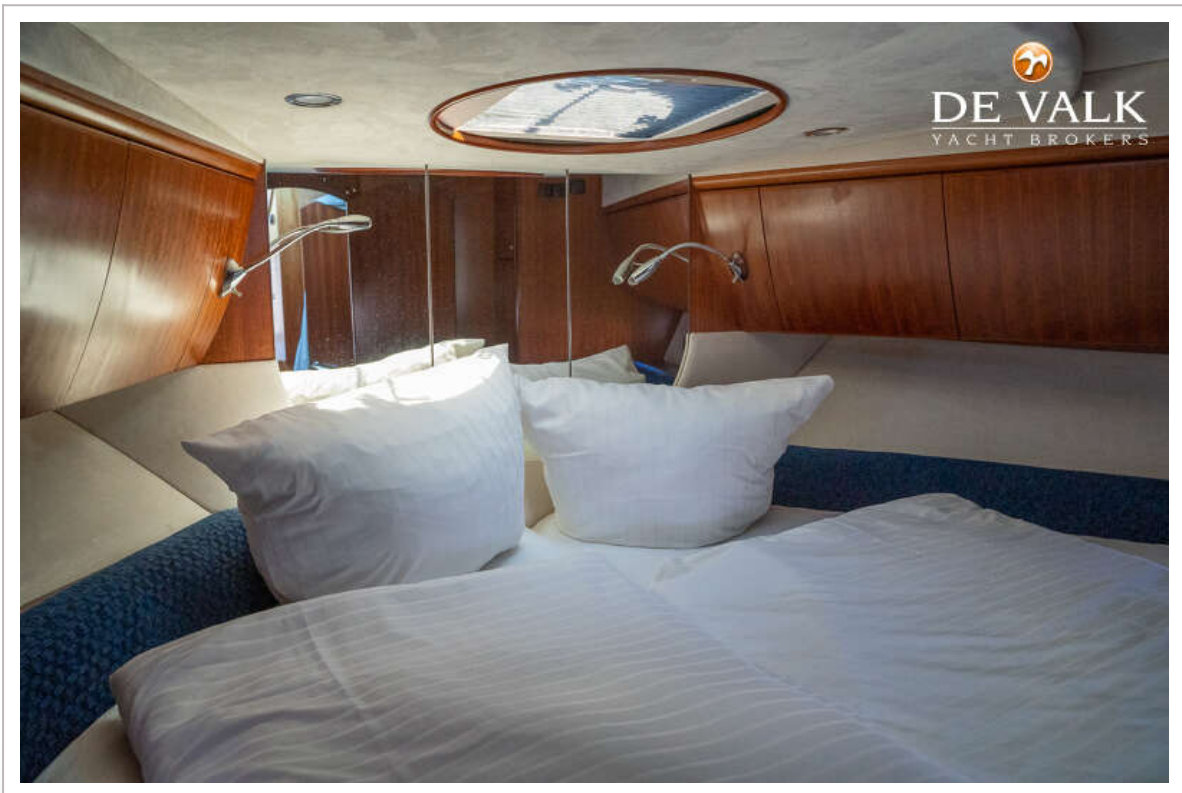
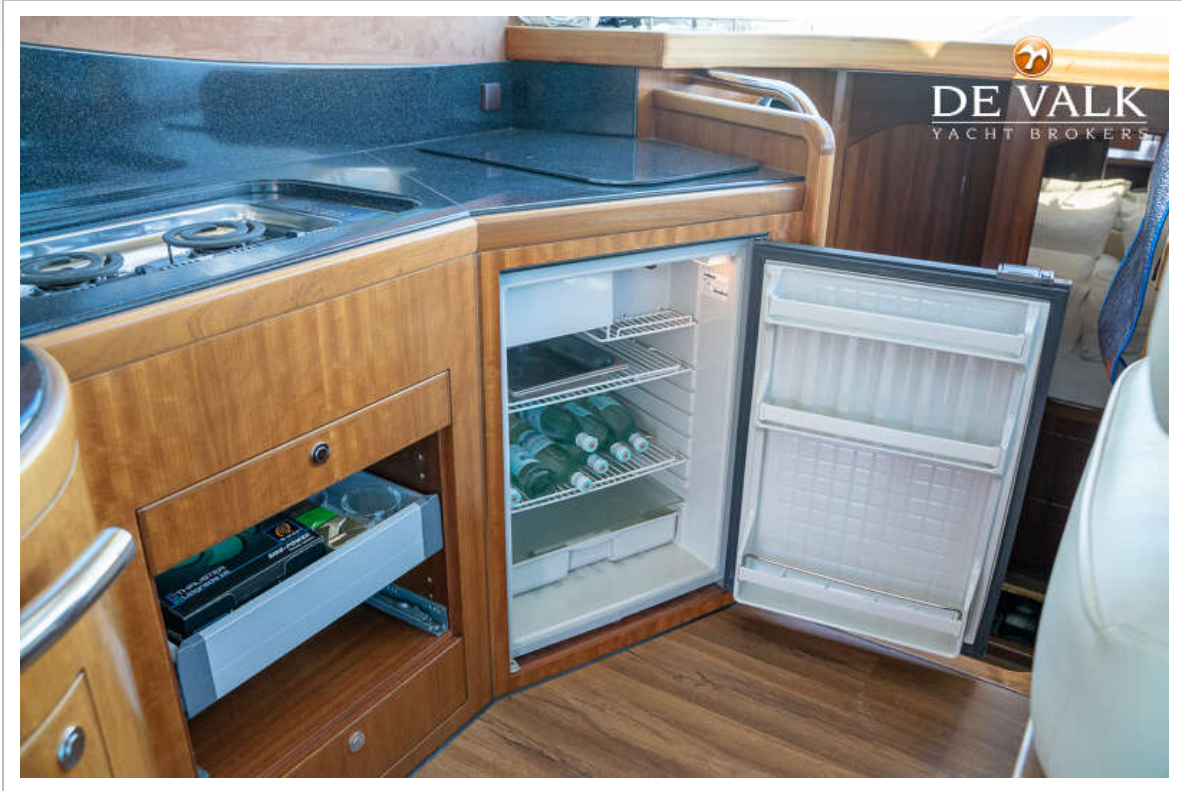


# GALEON 390 FLY

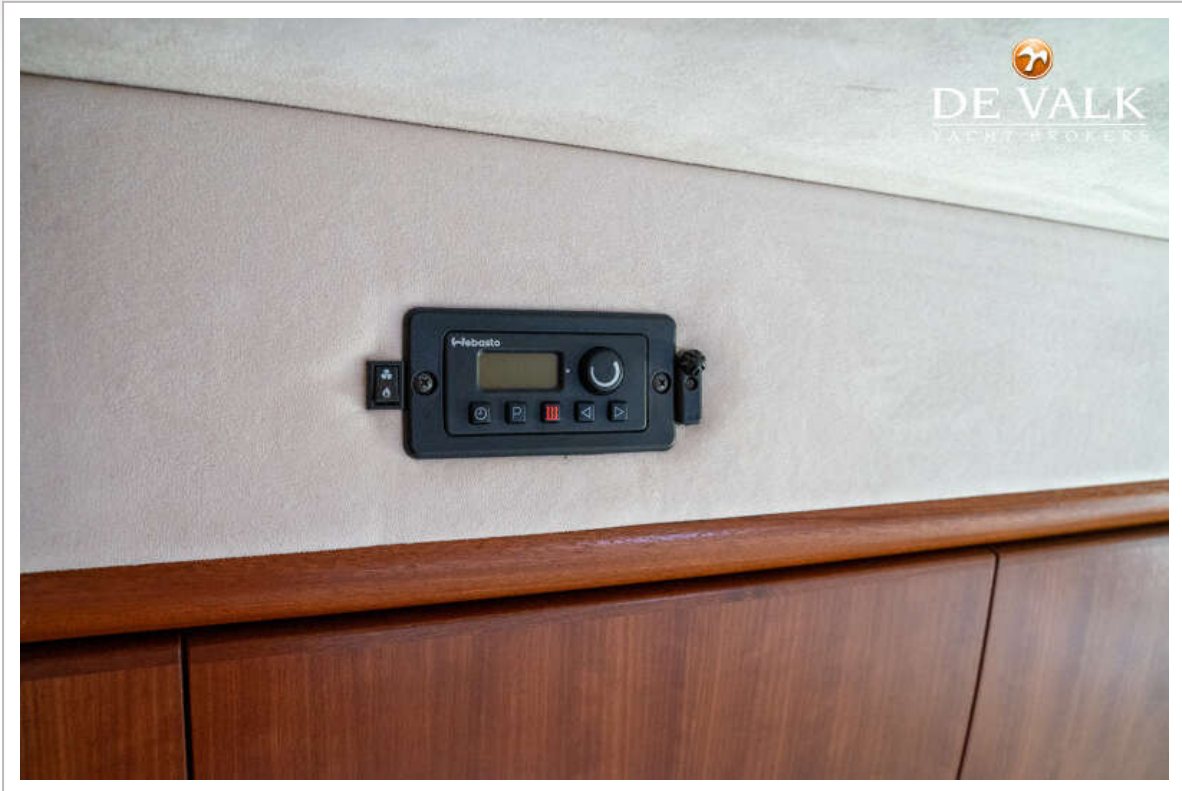




# GALEON 390 FLY

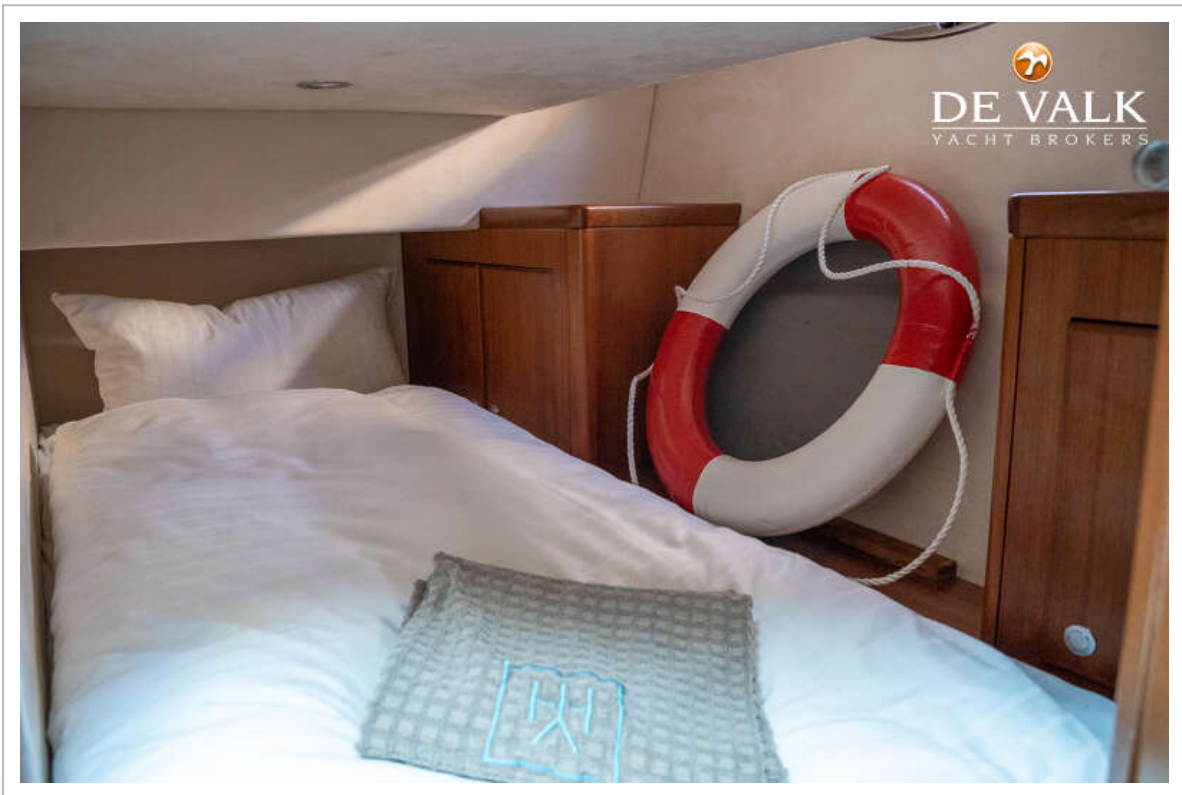


# GALEON 390 FLY

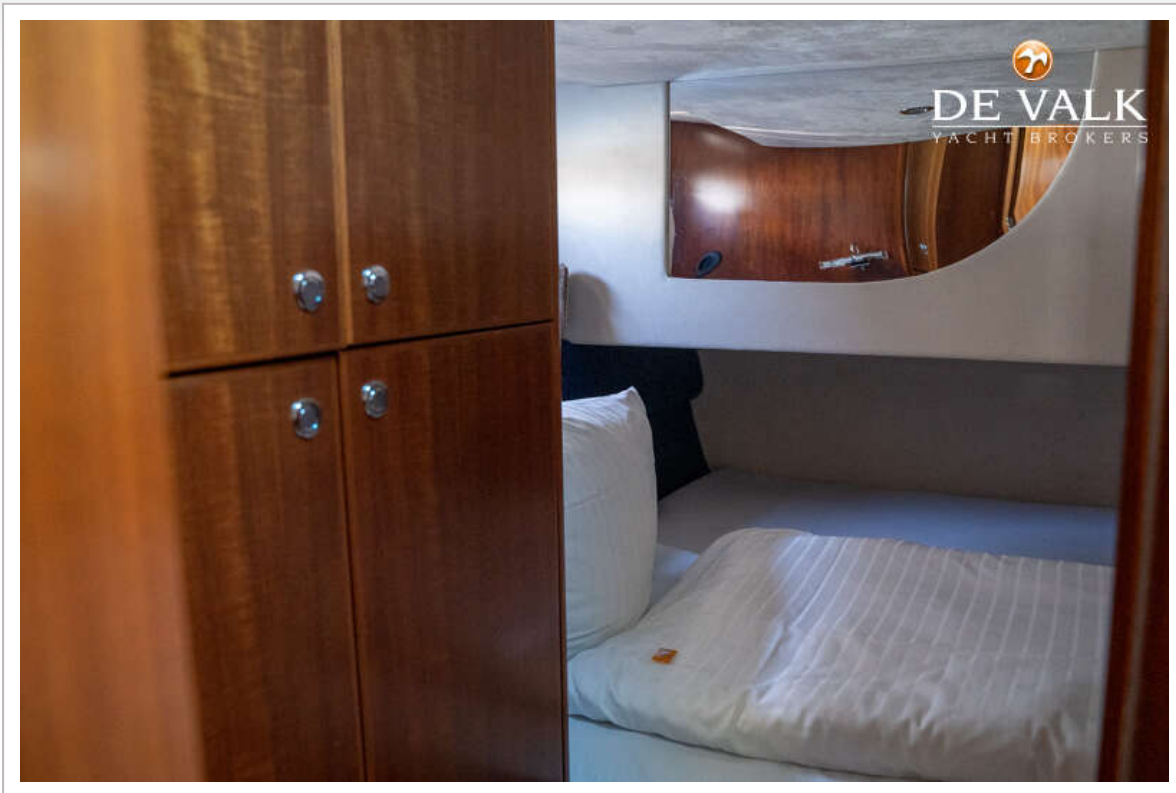




# GALEON 390 FLY



# GALEON 390 FLY





# GALEON 390 FLY



# GALEON 390 FLY





# GALEON 390 FLY



DE VALK  
YACHT BROKERS

## FLYBRIDGE



DE VALK  
YACHT BROKERS

## MAIN DECK



# GALEON 390 FLY

