



DE VALK
YACHT BROKERS

MULDER 1300 CABRIO



DE VALK
YACHT BROKERS

MULDER 1300 CABRIO

BROKER'S COMMENTS

Mulder 1300 Cabriolet built in 2013. A rare motor yacht in fantastic condition, both interieur, exterieur and technically we can safely say "as good as new". Rare is this Mulder 1300 "Cabrio" especially considering that the Mulder yard has built 1 of them. If you are looking for an exclusive motor yacht, you "must" have seen this Mulder. You are welcome seven days a week at de Valk in Sneek . See you soon!

Henk de Vries

SPECIFICATIONS

Dimensions	13.60 x 4.40 x 1.10 (m)	Builder	Jachtwerf D. Mulder BV
Built	2013	Cabins	2
Material	Aluminium	Berths	6
Engine(s)	2 x Volvo Penta D3 diesel	Hp/Kw	2 x 135.00 (hp), 99.36 (kw)
Asking price	sold (VAT)	Lying	contact Sneek

CONTACT

Sales office	De Valk Sneek	Telephone	+31 (0)515 42 80 30
Address	Zwolsmanweg 7 8606 KC Sneek NL	E-mail	sneek@devalk.nl

DISCLAIMER

These particulars are given in good faith as supplied but cannot be guaranteed.



MULDER 1300 CABRIO

GENERAL

Model	MULDER 1300 CABRIO
Type	motor yacht
LOA (m)	13,60
Beam (m)	4,40
Draft (m)	1,10
Air draft (m)	3,70
Air draft min (m)	3,10
Headroom (m)	1,95
Year built	2013
Builder	Jachtwerf D. Mulder BV
Country	The Netherlands
Designer	D.Mulder
Displacement (t)	11
CE norm	C
Hull material	aluminium
Hull colour	white
Hull shape	round-bilged Semi planing
Superstructure material	aluminium
Rubbing strake	stainless steel
Deck material	yes
Deck finish	teak
Superstructure deck finish	teak
Antifouling (year)	2023
Dorades	yes
Window frame	stainless steel
Window material	double glazing
Deckhatch	yes
Portholes	yes
Insulation	rockwool
Mast can be lowered	manual



MULDER 1300 CABRIO

Fuel tank (litre)	aluminium 1200
Level indicator (fuel tank)	Offshore digital
Freshwater tank (litre)	600
Level indicator (freshwater)	Offshore digital
Blackwater tank (litre)	350
Level indicator (blackwater)	Offshore digital
Blackwater tank extraction	deck extraction + pump
Wheel steering	hydraulic With remote control
Inside helm position	yes

ACCOMMODATION

Cabins	2
Berths	6
Interior	teak White wash
Floor	teak
Open cockpit	yes
Aft deck	yes
Saloon	yes
Headroom saloon (m)	2,0
Heating	diesel ducted hot air Webasto
Air-conditioning	reverse cycle airco All cabins
Sliding door to aft deck	Stainless steel
Galley	yes
Countertop	corian
Sink	stainless steel
Extractor	yes
Microwave/oven combi	yes
Fridge	2 x
Freezer	yes
Hot water system	220V + engine Boiler 60 ltr.
Water pressure system	electrical



MULDER 1300 CABRIO

Dishwasher	Siemens
Owners cabin	French bed
Bed length (m)	2,10
Wardrobe	drawers and shelves
Bathroom	shared Floor heating
Toilet	shared
Toilet system	electric
Wash basin	in the bathroom
Shower	shared
Guest cabin 1	twin single
Bed length (m)	2,0
Wardrobe	drawers and shelves
Bathroom	shared

MACHINERY

No of engines	2
Make	Volvo Penta
Type	D3
HP	135
kW	99.36
Fuel	diesel
Year installed	2013
Maximum speed (kn)	12
Cruising speed (kn)	9
Consumption (l/hr)	4
Engine hours	670
Engine cooling system	freshwater heat exchanger
Drive	shaft
Shaft seal	Volvo Seal
Engine controls	electrical
Gearbox	hydraulic



MULDER 1300 CABRIO

Bowthruster	electric Side Power with remote control
Sternthruster	electric Side Power with remote control
Exhaust	watercooled
Propeller type	fixed
Propeller blades	4
Propeller shaft material	stainless steel
Shaft lubrication	water
Manual bilge pump	yes
Electric bilge pump	3 x
Electrical installation	12V / 230V
Generator	Onan 7 kwa
Batteries	8 x
Start battery	2 x
Service battery	4 x
Bowthruster battery	1 x with battery charger
Sternthruster battery	1 x with battery charger
Battery monitor	Victron
Battery charger	Victron
Inverter	Victron
Shorepower	with cable
Insulation transformer	Victron

NAVIGATION

Electric compass	Raymarine
Depth sounder/log	Raymarine tri data
VHF	Raymarine
Autopilot	Raymarine with remote control
Rudder angle indicator	Raymarine
Plotter/GPS	Raymarine
Wifi antenna	yes
AIS transceiver	Raymarine



Camera	Rear view and engineroom
Navigation lights	yes

EQUIPMENT

Fixed windscreen	yes
Sprayhood	yes
Dodger	yes
Bimini	yes
Cockpit cushions	yes
Cockpit table	Electric adjustable
Bathing platform	yes
Boarding ladder	yes
Anchor	Stainless steel
Anchor chain	yes
Windlass	electrical With remote control
Deck wash	yes
Davits	stainless steel
Davits controls	Electric/hydraulic, with remote control
Sea railing	stainless steel
Grab rail (superstructure)	stainless steel
Railing side opening gates	yes
Wiper	3 x
Horn	air pressure
Fenders	yes
Mooring lines	yes
TV	2x Flatscreen Philips
TV receiver	WiFi
Radio-cd player	2 x
Speakers in salon	yes
Speakers in cabin	yes
Clock - barometer	yes



Fire extinguisher	yes
Extinguisher in engine room	yes



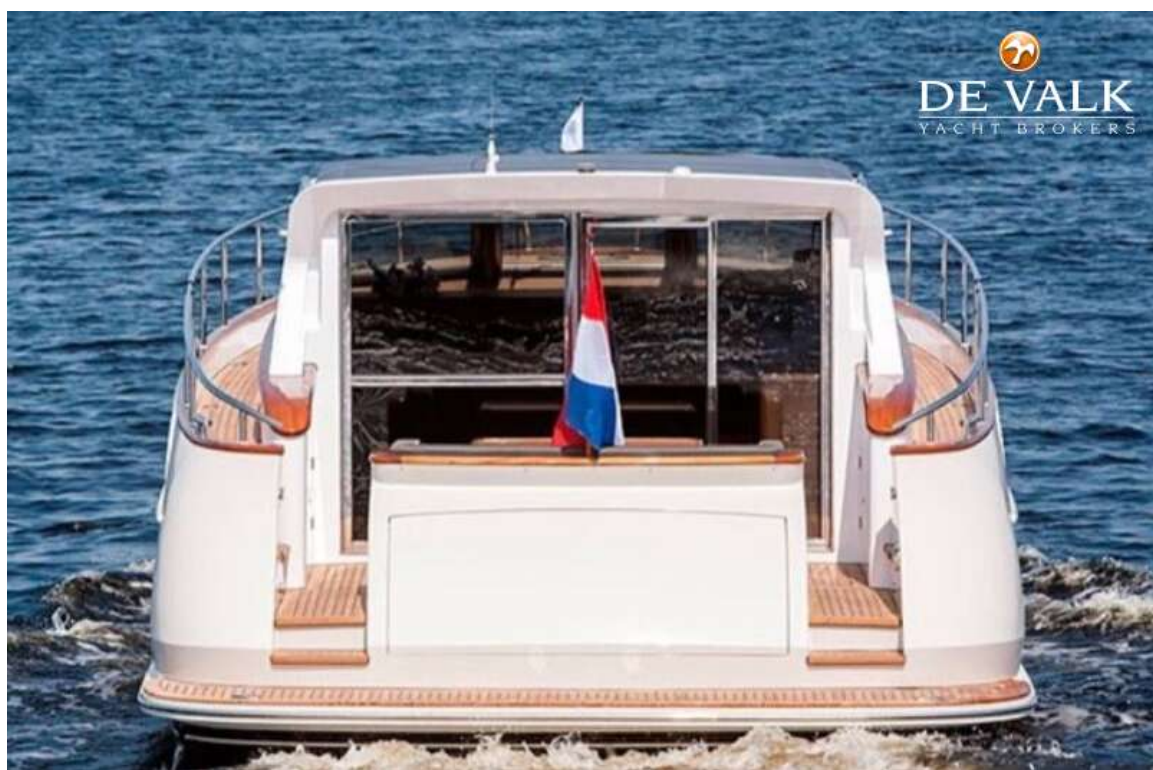
MULDER 1300 CABRIO



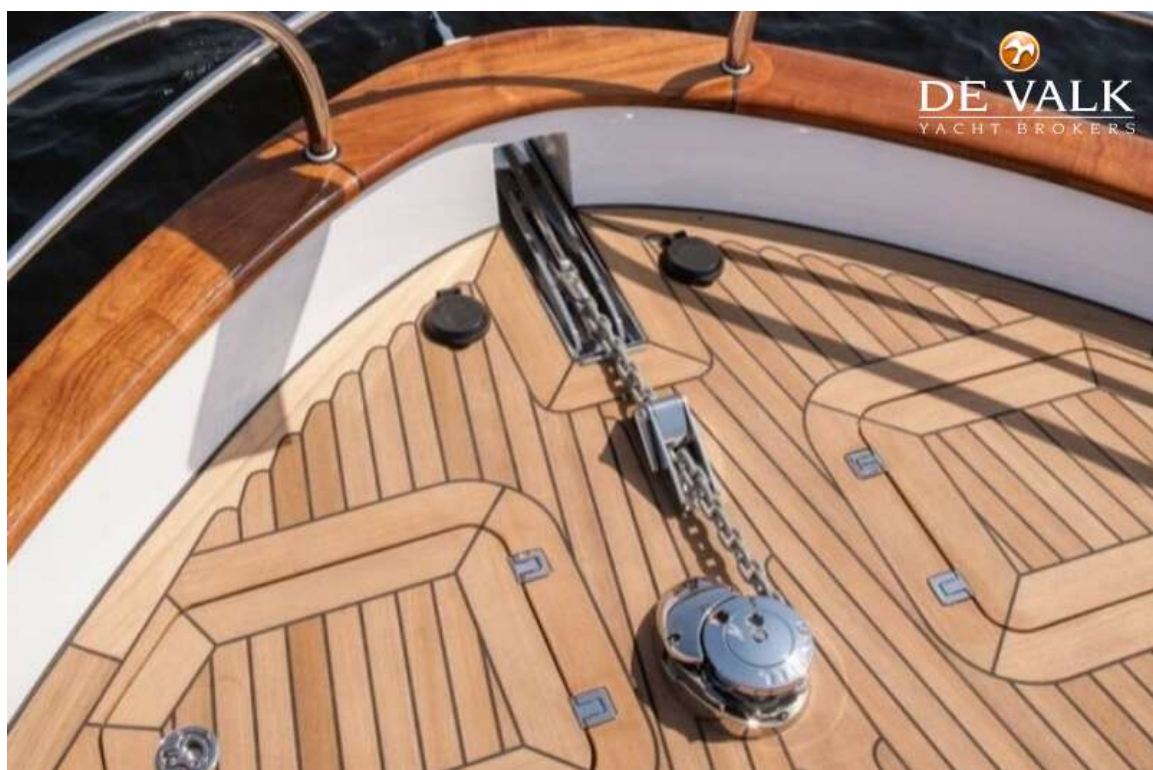
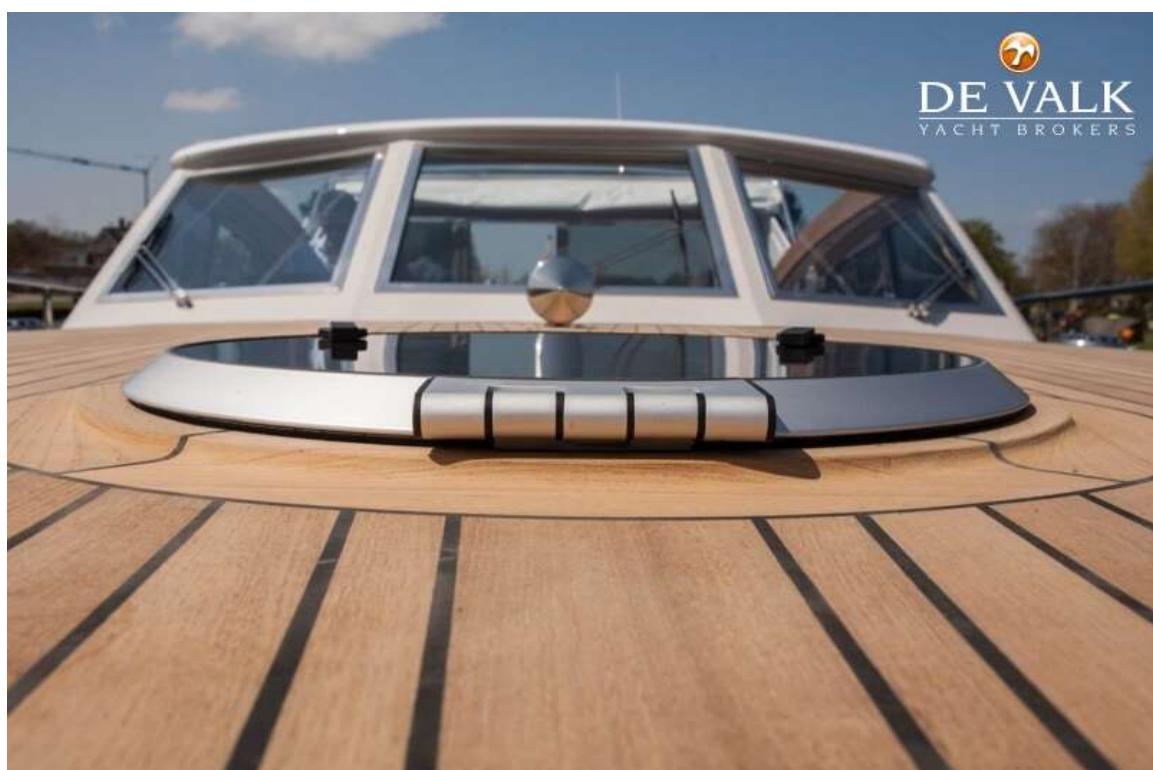
MULDER 1300 CABRIO



MULDER 1300 CABRIO



MULDER 1300 CABRIO



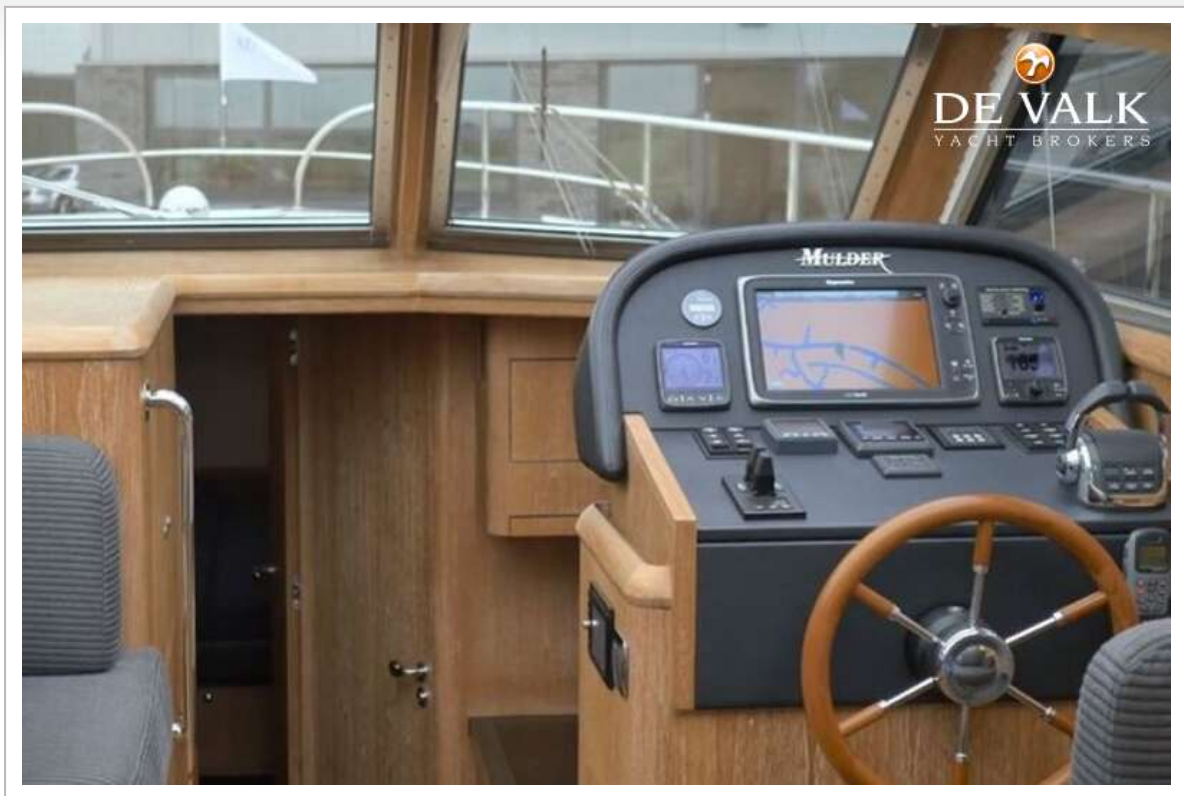
MULDER 1300 CABRIO



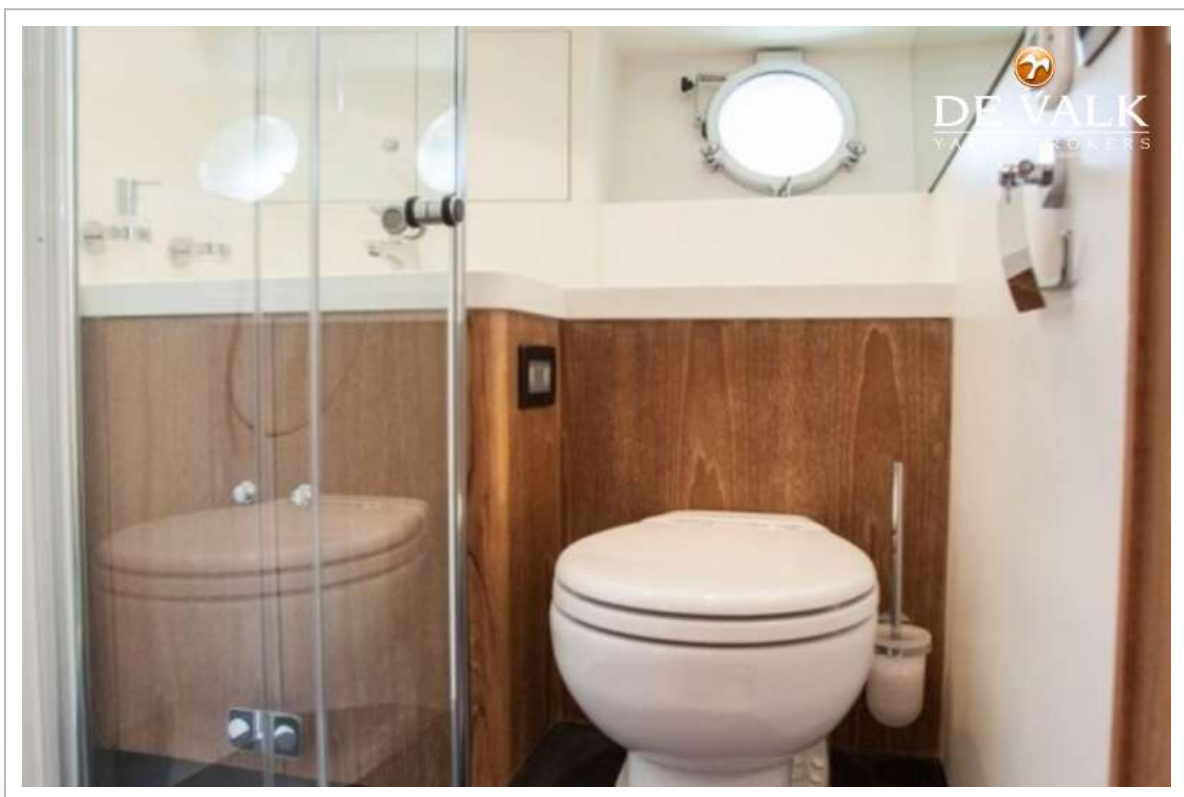
MULDER 1300 CABRIO



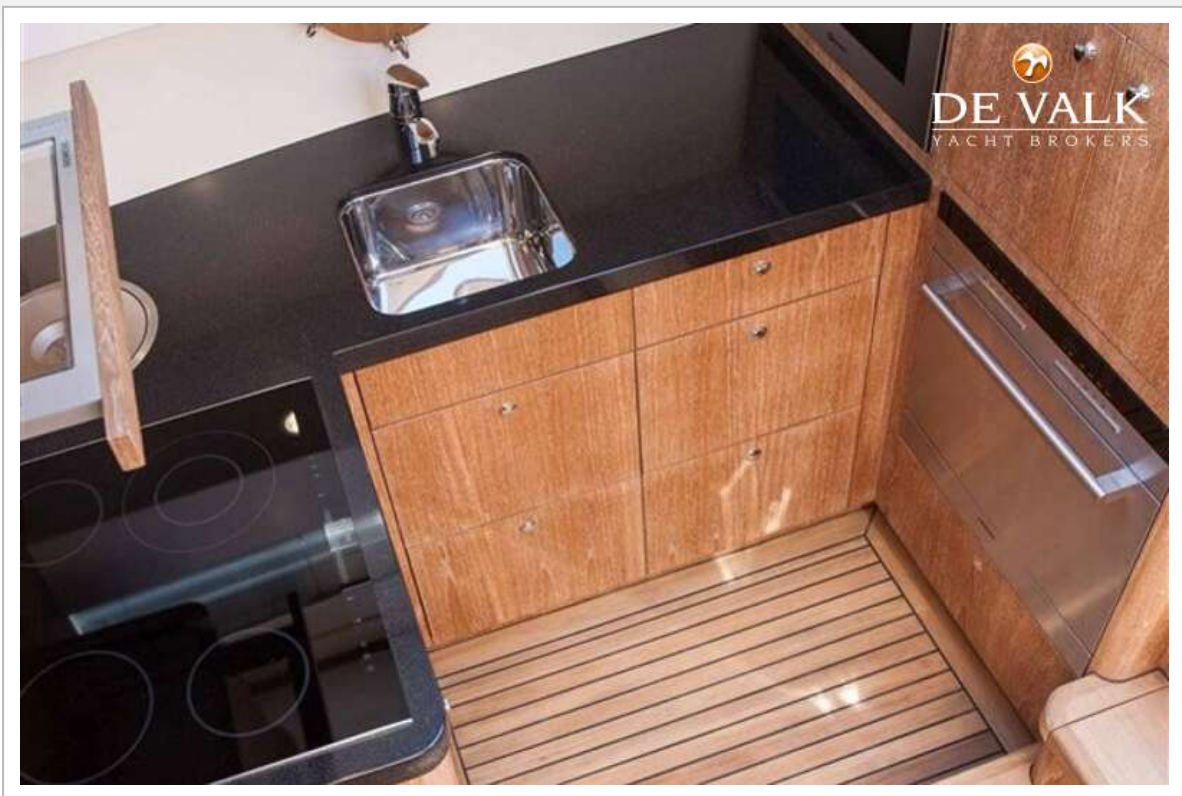
MULDER 1300 CABRIO



MULDER 1300 CABRIO



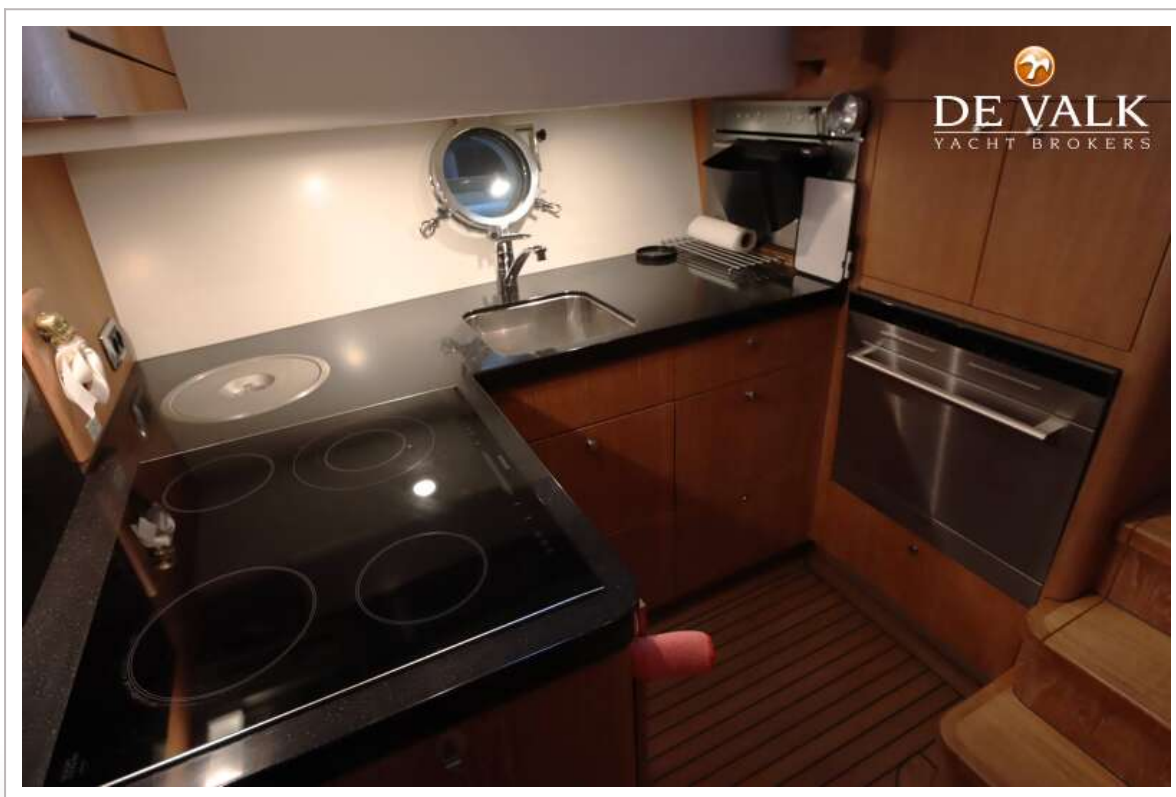
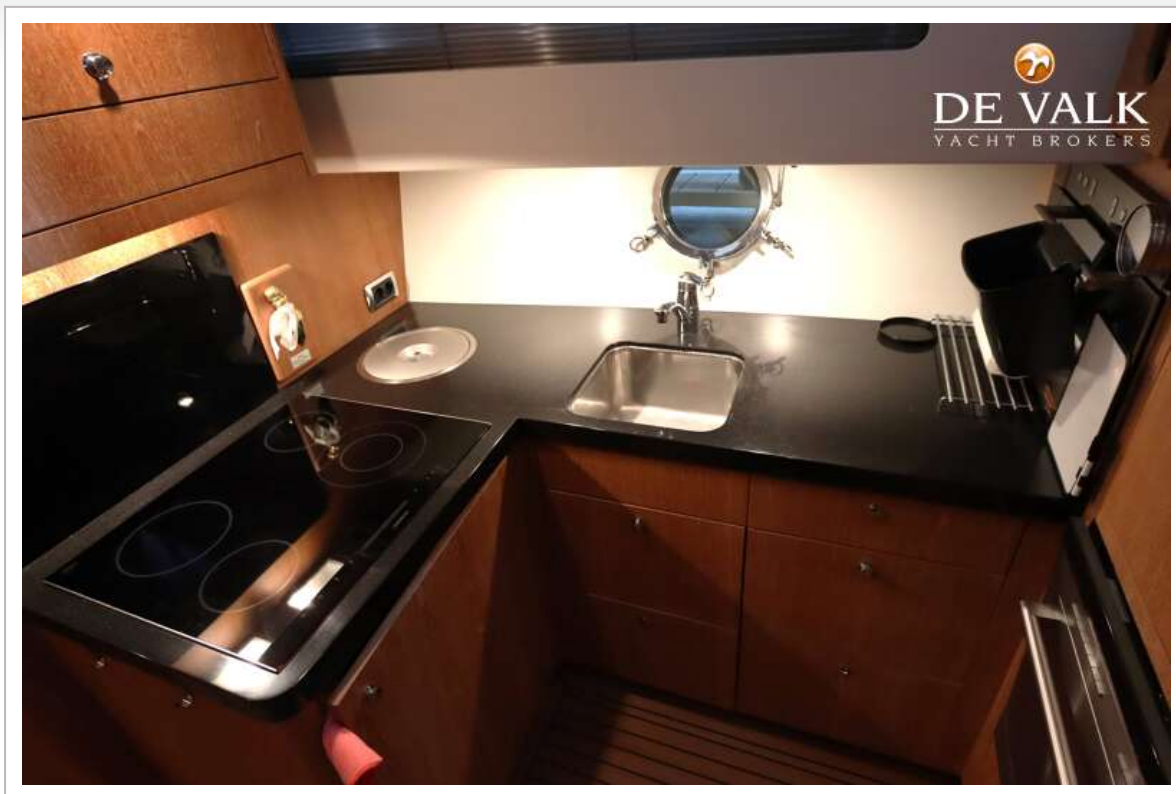
MULDER 1300 CABRIO



MULDER 1300 CABRIO



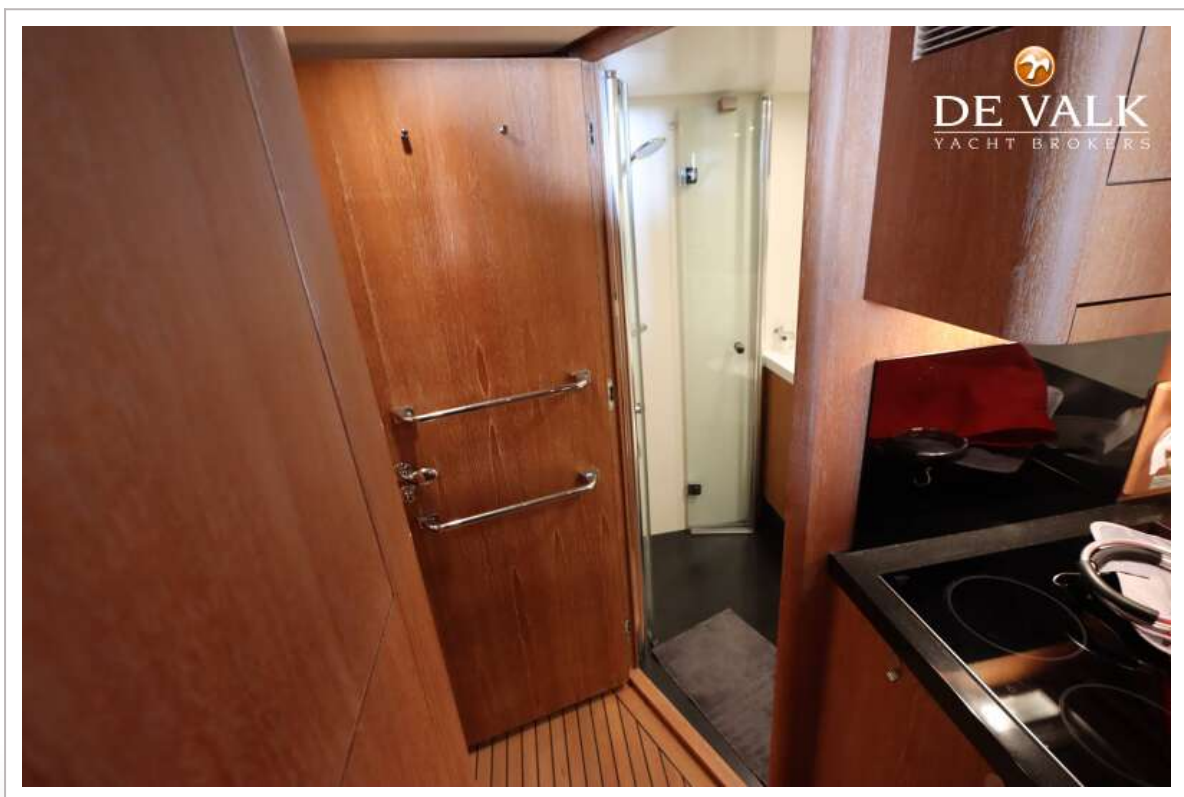
MULDER 1300 CABRIO



MULDER 1300 CABRIO



MULDER 1300 CABRIO



MULDER 1300 CABRIO

