



SCIARRELLI SCHOONER

BROKER'S COMMENTS

A unique pre-owned yacht, sister ship to the renowned Judeca II. This is Project 72 by the famous yacht designer Carlo Sciarrelli. Featuring 4 cabins and 9 berths, with many upgrades and replacements done in 2022. The yacht is in excellent condition!

Arjen Hoeksma

SPECIFICATIONS

Dimensions	16.70 x 4.30 x 1,50 / 2.20 (m)	Builder	Cantieri San Marco Venezia
Built	1984	Cabins	4
Material	Steel	Berths	9
Engine(s)	1 x Iveco 8041M diesel	Hp/Kw	86.00 (hp), 63.30 (kw)
Asking price	€ 119.000 (VAT Paid)	Lying	Italy

CONTACT

Sales office	De Valk Dalmatia	Telephone	+385 914 567 834
Address	Ul. Velimira Skorpika 22000 Sibenik HR	E-mail	dalmatia@devalk.nl

DISCLAIMER

These particulars are given in good faith as supplied but cannot be guaranteed.



GENERAL

Model	SCIARRELLI SCHOONER
Type	sailing yacht
LOA (m)	16,70
LWL (m)	13,00
Beam (m)	4,30
Draft (m)	2,20
Draft min (m)	1,50
Air draft (m)	17,00
Headroom (m)	2,10
Year built	1984
Builder	Cantieri San Marco Venezia
Country	Italy
Designer	Carlo Sciarrelli
Displacement (t)	23,9
Hull material	steel
Hull colour	white 2023 painted
Hull thickness (mm)	4-5
Hull shape	round-bilged
Keel type	lifting keel
Superstructure material	steel
Rubbing strake	steel
Deck material	steel
Deck finish	paint 2023. anti-slip light grey
Cockpit deck finish	paint 2023
Antifouling (year)	2024
Window material	polycarbonate
Portholes	stainless steel
Insulation	foam plates
Fuel tank (litre)	steel
Freshwater tank (litre)	steel



Blackwater tank (litre)	yes
Level indicator (blackwater)	yes
Greywater tank (litre)	polyethylene New 2022 with pump
Outside helm position	mechanical
Emergency tiller	yes
More info on hull	2022 sandblasted and epoxy primer under water section
More info on paintwork	Hull painted 2024, deck painted 2022, grey 2024

ACCOMMODATION

Cabins	4
Berths	9
Interior	Mahogany and teak
Floor	teak and holly
Open cockpit	yes
Chart table	yes
Dinette	9 sits
Galley	2 stoves
Countertop	wood
Sink	stainless steel
Cooker	calor gas
Oven	Gas
Fridge	Top loading
Hot water system	220V + engine Boiler Quick 2023
Water pressure system	electrical
Owners cabin	bunk bed
Wardrobe	hanging/drawers/shelves
Bathroom	en suite
Toilet	shared 2022
Toilet system	manual
Guest cabin 1	bunk bed
Wardrobe	hanging/drawers/shelves



Guest cabin 2	bunk bed
Wardrobe	hanging/drawers/shelves
Guest cabin 3	v-bed
Wardrobe	hanging/drawers/shelves
Extra info	Fridge motor and exchanger new 2022

MACHINERY

No of engines	1
Make	Iveco
Type	8041M
HP	86
kW	63.30
Fuel	diesel
Year installed	1984
Maximum speed (kn)	7,6
Cruising speed (kn)	6
Consumption (l/hr)	5
Range (nm)	900
Engine cooling system	freshwater heat exchanger Full service and replaced gaskets head, sea water,injector check
Drive	shaft
Engine controls	mechanical
Gearbox	mechanical
Bowthruster	2022, Twin propellor 100kgf
Exhaust	watercooled Replaced 2022 new raiser and muffler
Propeller type	feathering
Propeller blades	3
Propeller shaft material	stainless steel Replaced 2022
Shaft lubrication	grease
Electric bilge pump	2 automatic, 2021, 2024
Bilge alarm	yes



Batteries	7x AGM total
Start battery	1x AGM 100 Ah 2022
Service battery	4x 100Ah 2022
Bowthruster battery	2x AGM 105Ah, 2022
Battery charger	Victron 70 Ah, 2022
Inverter	Quick
Shorepower	with cable

NAVIGATION

Log	Raymarine
Windset	Raymarine
VHF	ICOM, 2022
Radar	B&G Halo, 2022
GPS	Vulcan 12, 2022
Plotter	Vulcan 12, 2022
Plotter/GPS	2022
Radar/GPS	2022
Extra info	Engine refurbished 2022

EQUIPMENT

Boarding ladder	stainless steel
Deck shower	yes
Anchor	CQR Plough 26kg
Anchor chain	60 meters 12mm
Windlass	electrical
Sea railing	stainless steel
Life raft	container
Life raft (pers)	10
Last life raft survey	2022
Lifejackets	10
Fire extinguisher	4x 2022



Extra info

Sea intakes checked and replaced

RIGGING

Rigging	schooner
Material mast	aluminium 2x
Spreaders	Aluminium
Mainsail	yes
Mainsail cover	yes
Furling boom	Profurl
Fisherman staysail	yes
Mizzen	Furling new 2024
Jib	yes
Genoa	Furling
Cutter furler	yes
Spinnaker	yes
Reefing System	main in-boom furling Profun
Boomvang	gasspring 2024
Primary sheet winch	4x ST40 Lewmar, 2x ST48 Lofrans, 2x ST55
Secondary sheet winch	4x Lofrans ST16, 1x ST24, 1x ST40
Spinnaker winch	yes
Spi-pole	aluminium



SCIARRELLI SCHOONER





BROKERAGE | CHARTER | BERTHS | FINANCE | INSURANCE | YACHT MANAGEMENT



**This yacht will be auctioned,
for further details please visit www.devalk.nl**

**Dit schip zal worden geveild,
voor meer informatie gaat u naar www.devalk.nl**

**Dieses Schiff wird versteigert,
für weitere informationen besuchen Sie www.devalk.nl**

WWW.DEVALK.NL



DE VALK
YACHT BROKERS



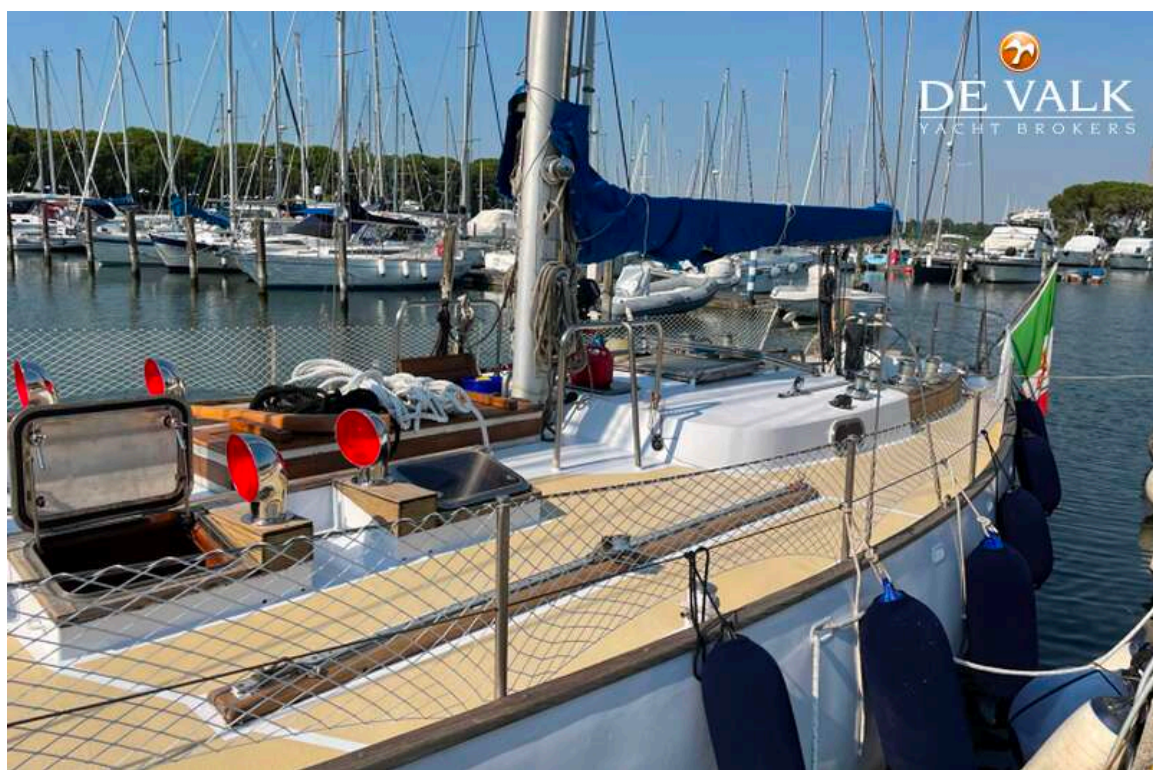
SCIARRELLI SCHOONER



SCIARRELLI SCHOONER



SCIARRELLI SCHOONER



SCIARRELLI SCHOONER



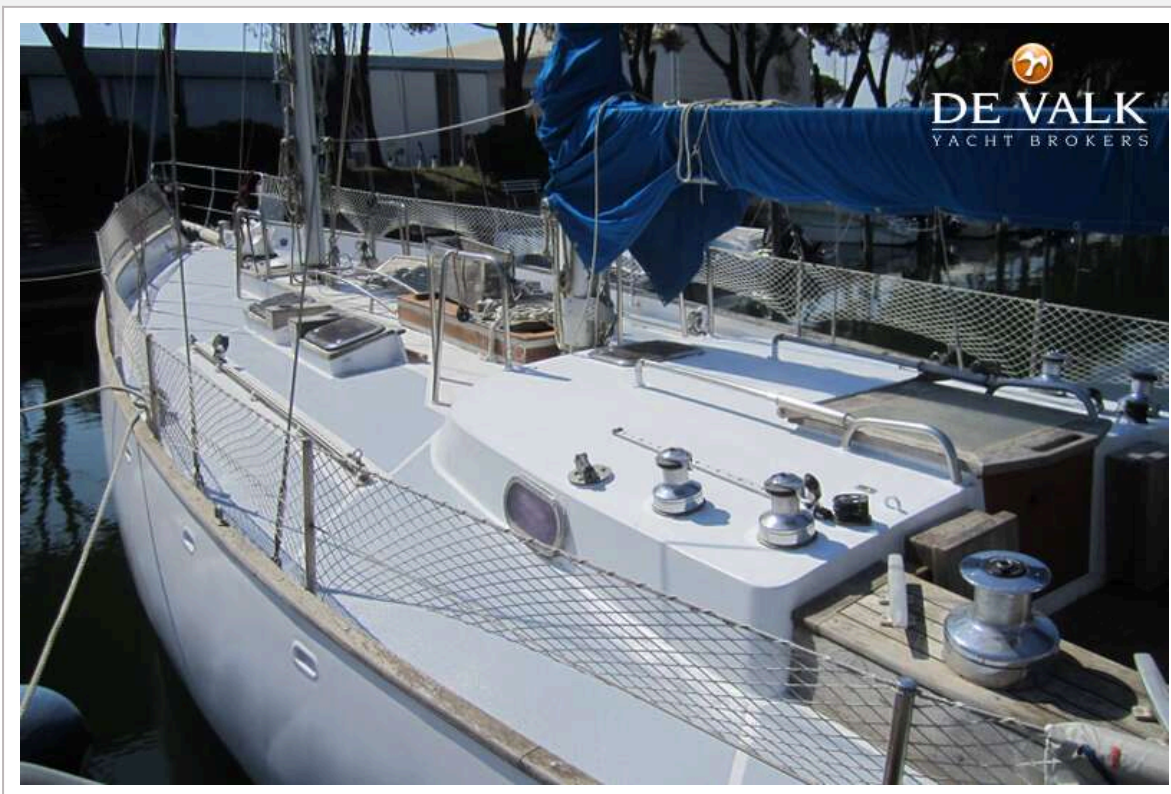
SCIARRELLI SCHOONER



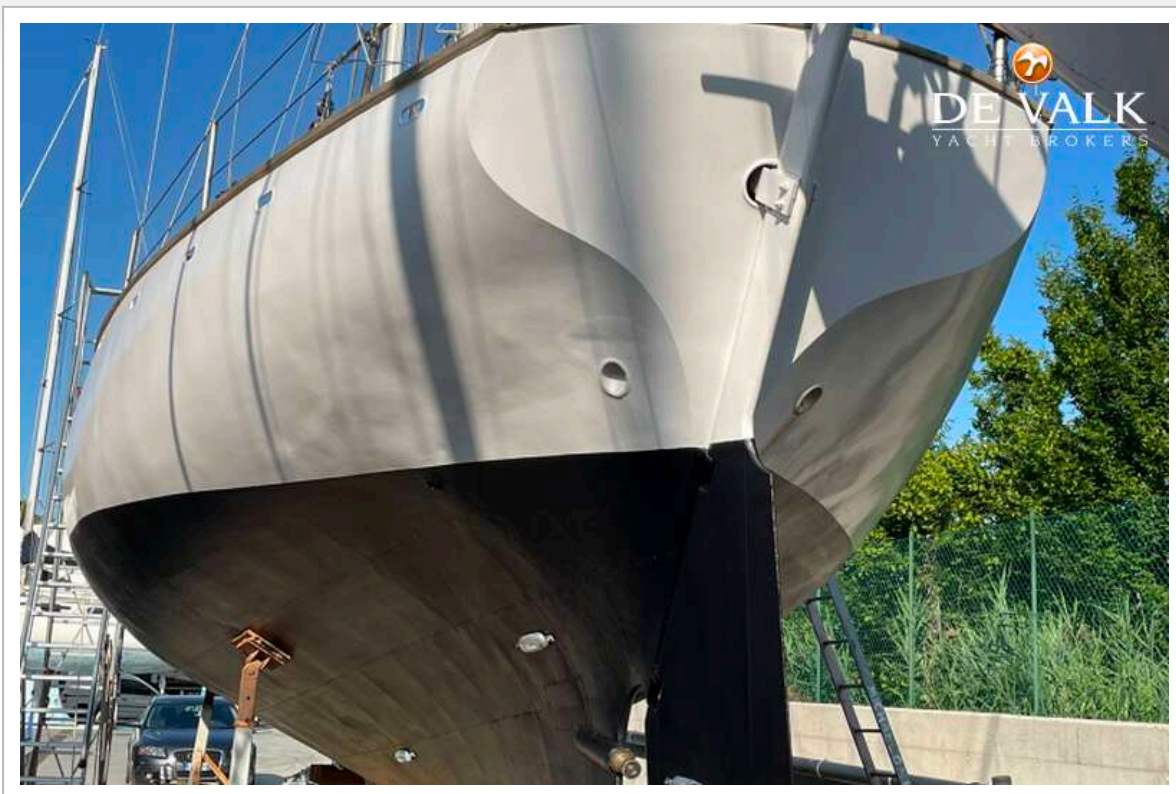
SCIARRELLI SCHOONER



SCIARRELLI SCHOONER



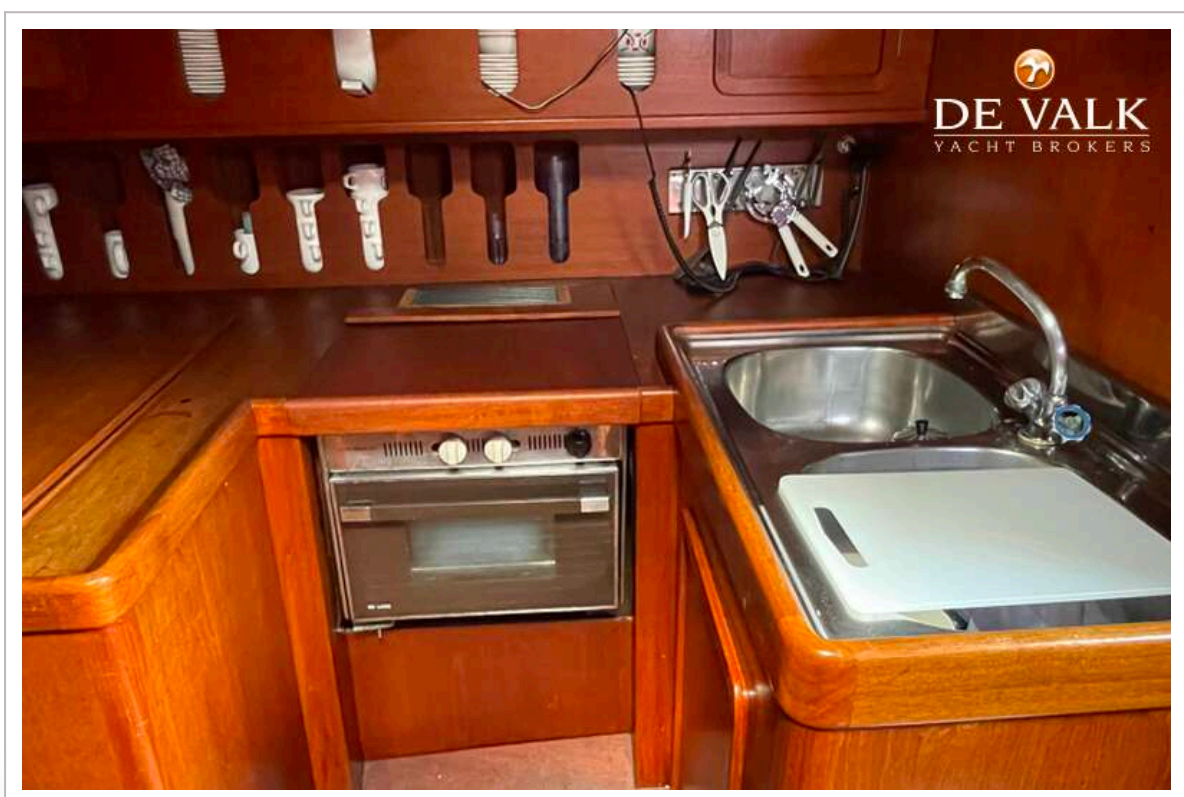
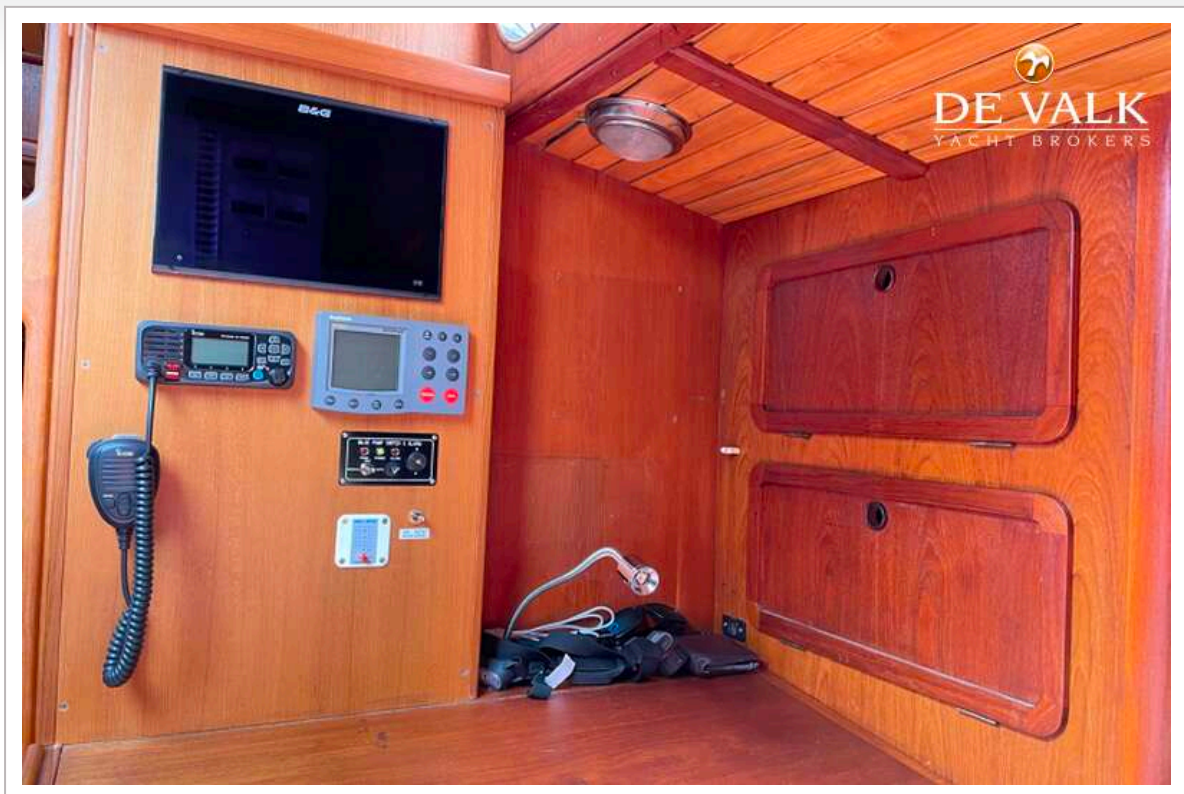
SCIARRELLI SCHOONER



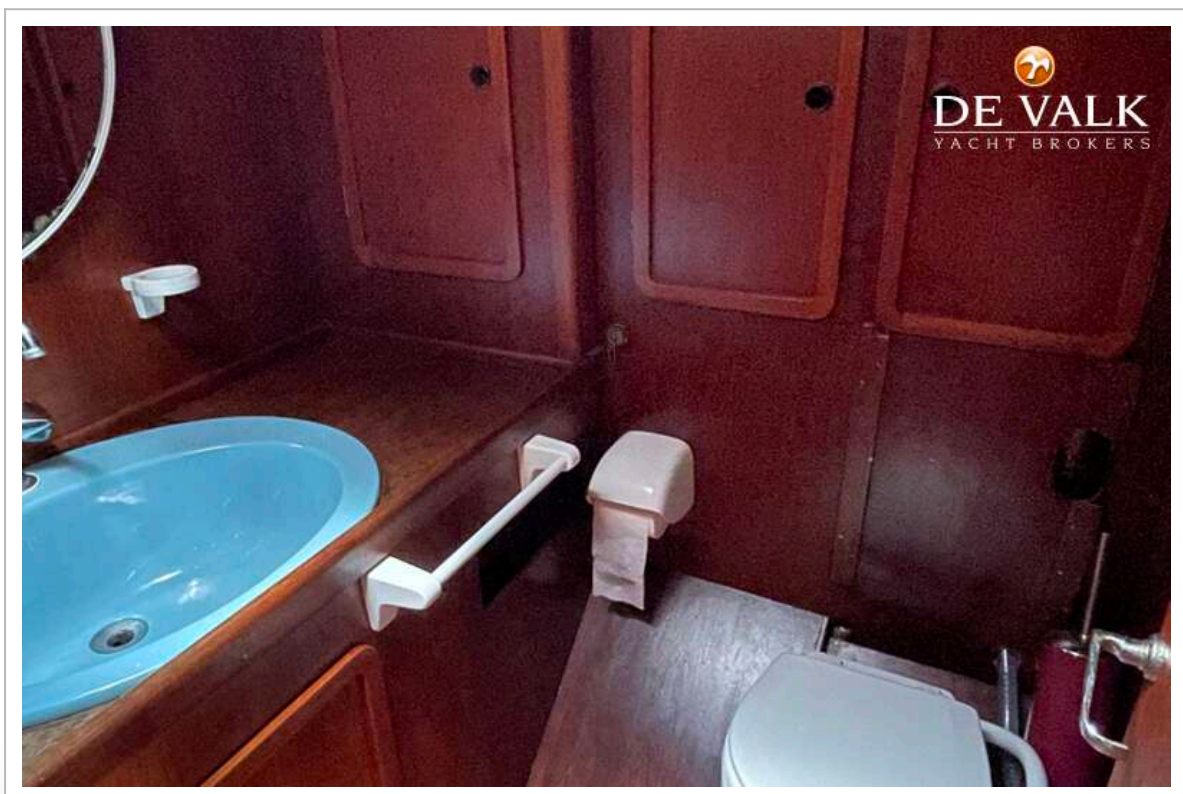
SCIARRELLI SCHOONER



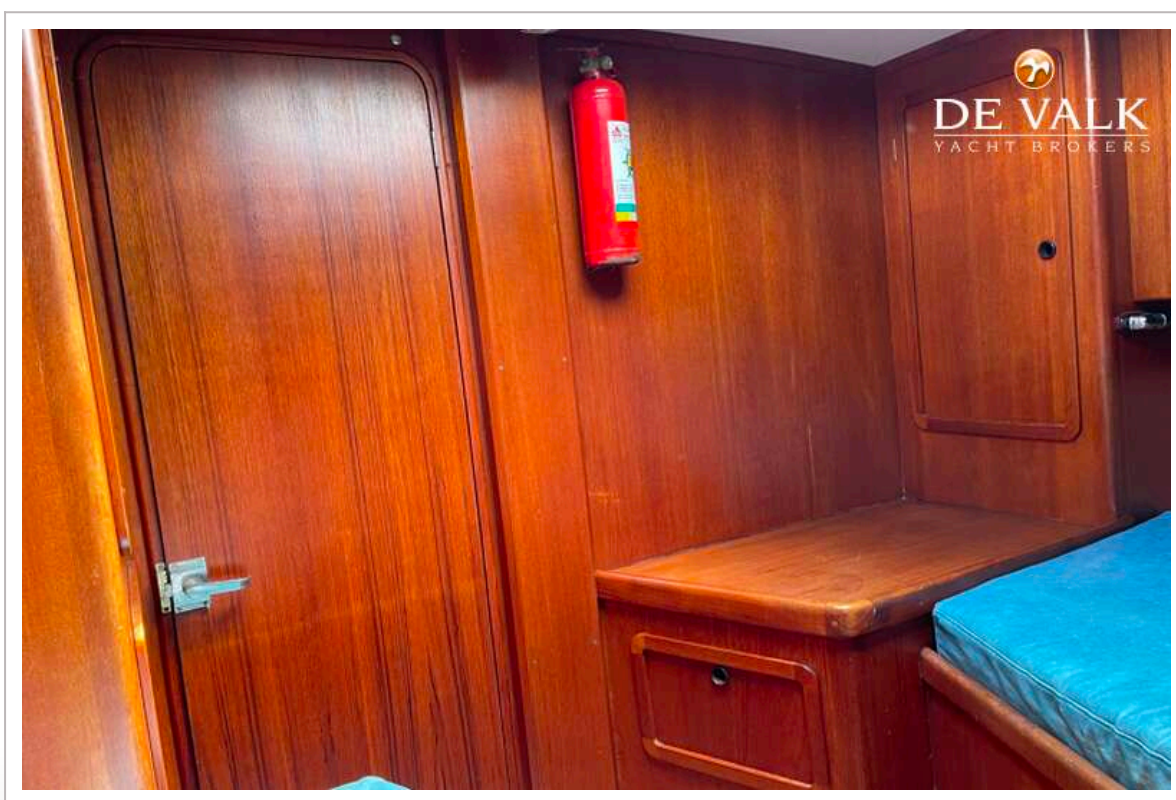
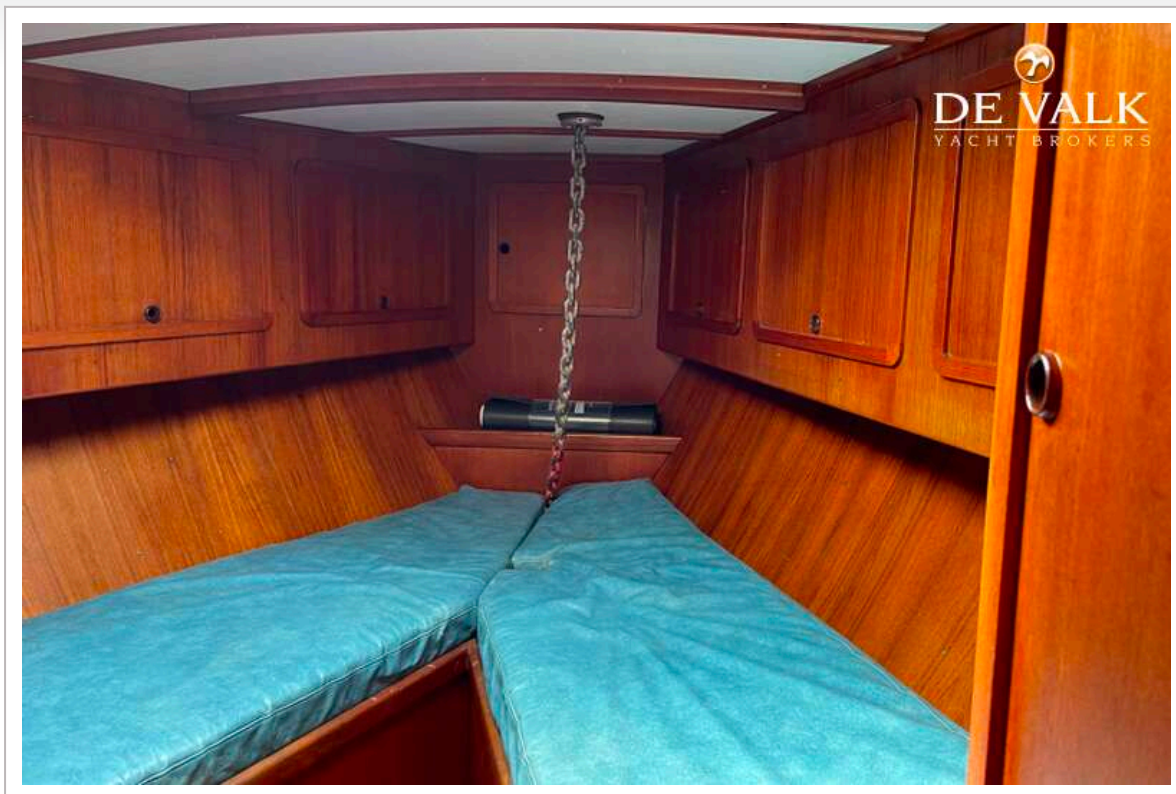
SCIARRELLI SCHOONER



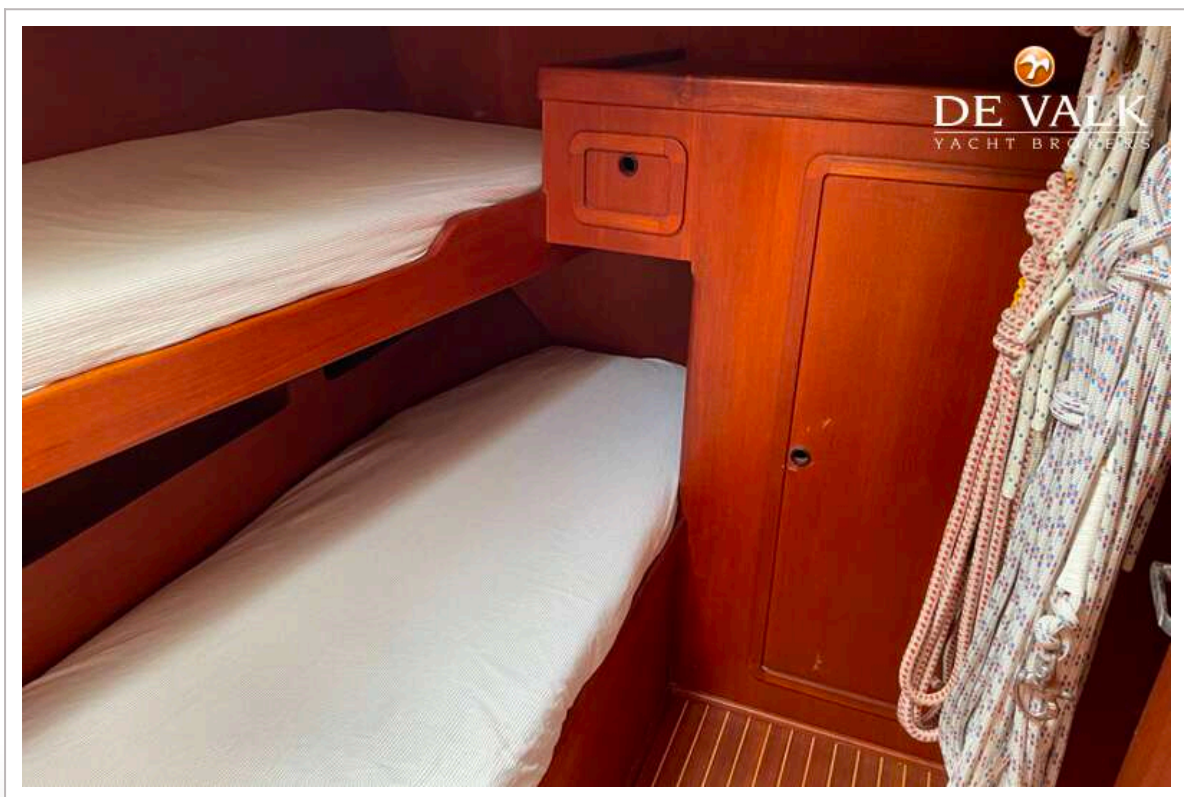
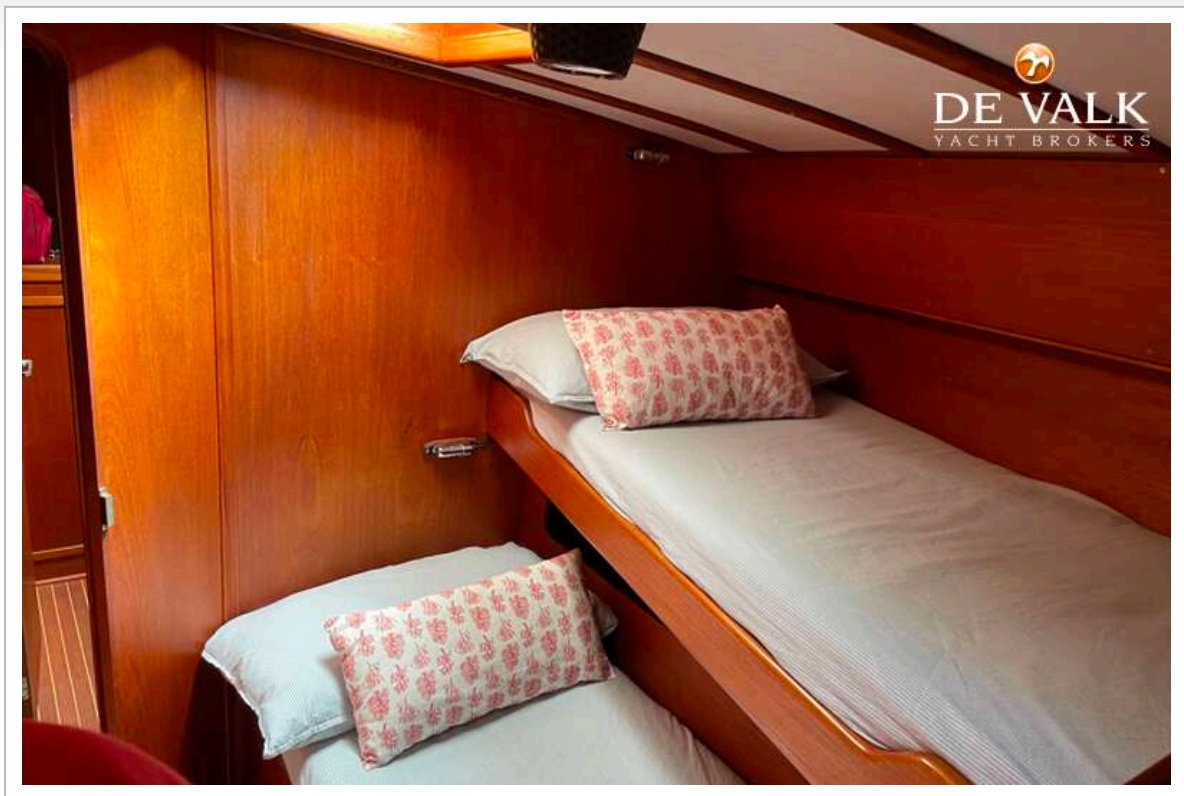
SCIARRELLI SCHOONER



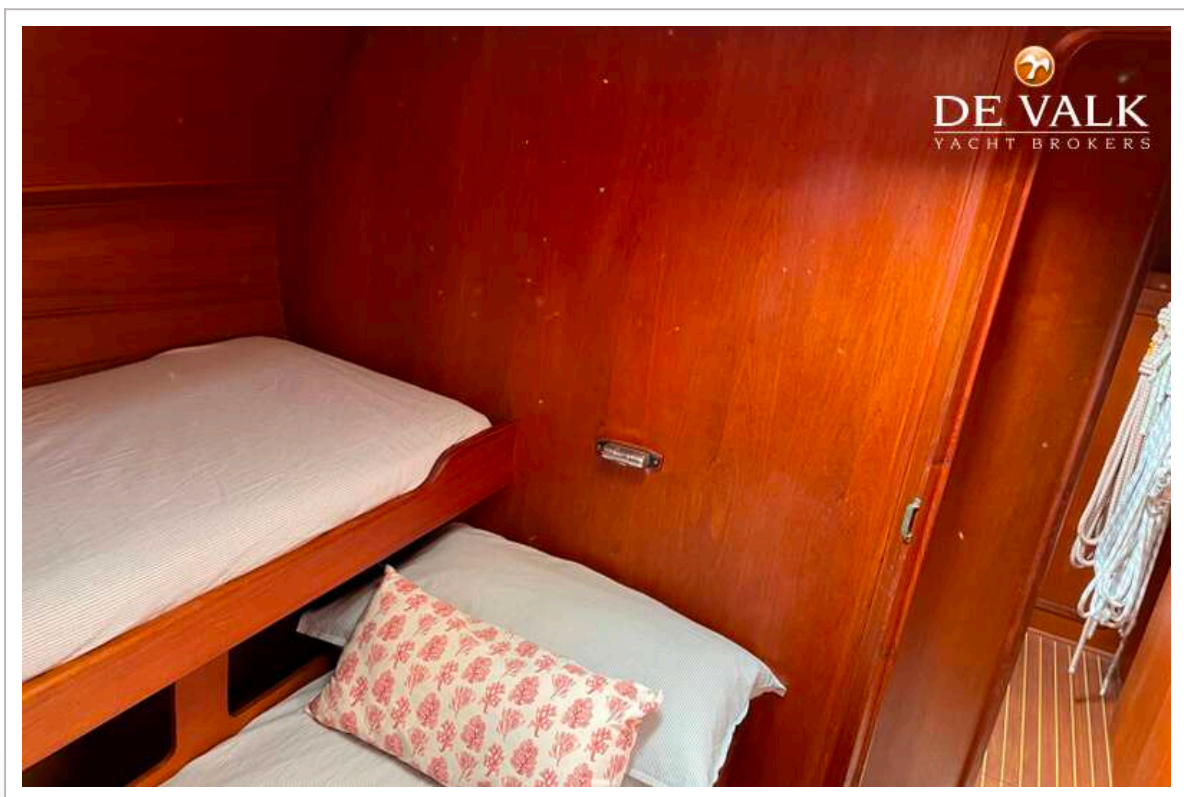
SCIARRELLI SCHOONER



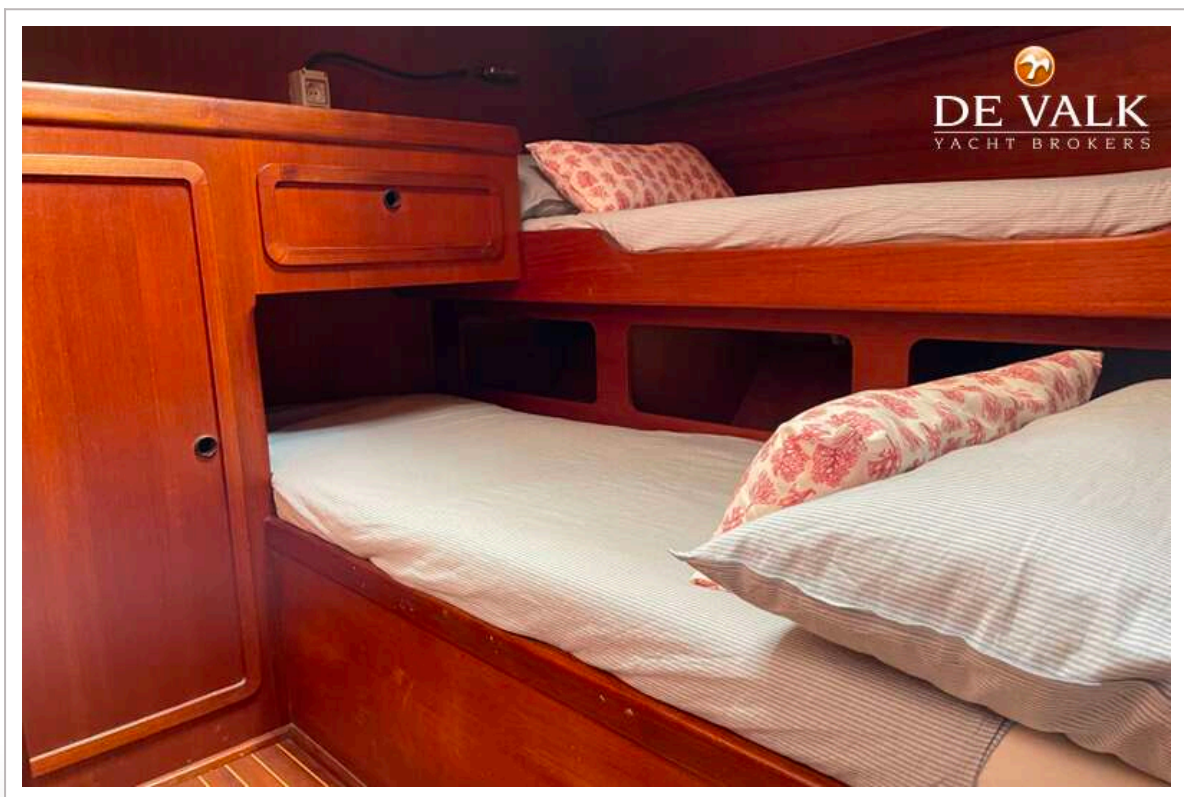
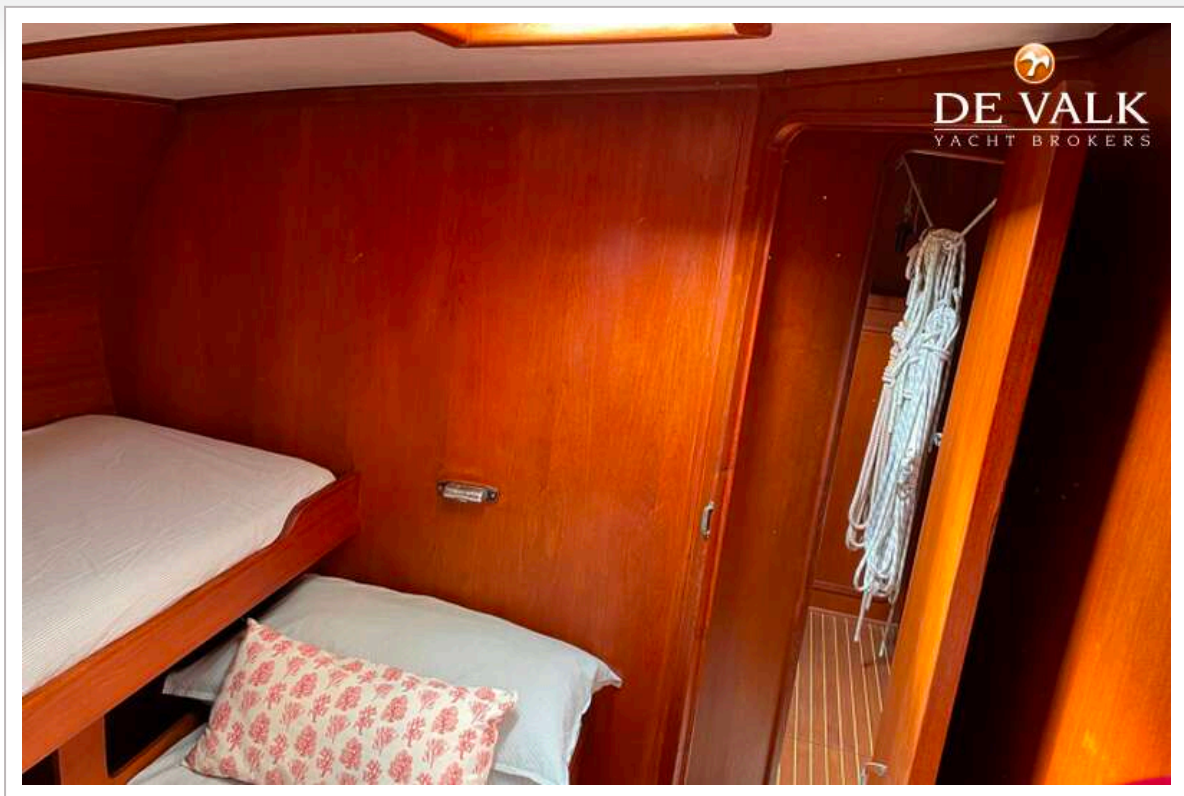
SCIARRELLI SCHOONER



SCIARRELLI SCHOONER



SCIARRELLI SCHOONER



SCIARRELLI SCHOONER

