



DE VALK



## BRONSVEEN KOTTER 1440



**DE VALK**  
YACHT BROKERS

## BROKER'S COMMENTS

Are you looking for a sturdy, solid cutter with a lot of space? Then this Bronsveen Kotter 1440 is definitely worth a visit. With a very reliable John Deere diesel engine (from 2013), a low vertical clearance and a comfortable interior, you can make long journeys in your 'sailing holiday home'. Make an appointment with De Valk Zeeland to view this Bronsveen Kotter 1440 on location.

*Joris van de Rijt*

## SPECIFICATIONS

<b>Dimensions</b>	14.40 x 4.25 x 1.30 (m)	<b>Builder</b>	Bronsveen
<b>Built</b>	1995	<b>Cabins</b>	2
<b>Material</b>	Steel	<b>Berths</b>	5
<b>Engine(s)</b>	1 x John Deere 6068 DFM 150 diesel	<b>Hp/Kw</b>	150.00 (hp), 110.40 (kw)
<b>Asking price</b>	sold (VAT )	<b>Lying</b>	elsewhere / Not at sales office

## CONTACT

<b>Sales office</b>	De Valk Sint Annaland	<b>Telephone</b>	+31 166 601 000
<b>Address</b>	Koelhuisweg 4 4697 RM Sint Annaland The Netherlands	<b>E-mail</b>	sintannaland@devalk.nl

## DISCLAIMER

These particulars are given in good faith as supplied but cannot be guaranteed.



# BRONSVEEN KOTTER 1440

## GENERAL

<b>Model</b>	BRONSVEEN KOTTER 1440
<b>Type</b>	motor yacht
<b>LOA (m)</b>	14,40
<b>Beam (m)</b>	4,25
<b>Draft (m)</b>	1,30
<b>Air draft (m)</b>	2,75
<b>Air draft min (m)</b>	3,48
<b>Headroom (m)</b>	1,97
<b>Year built</b>	1995
<b>Builder</b>	Bronsveen
<b>Country</b>	The Netherlands
<b>Displacement (t)</b>	32
<b>CE norm</b>	NA
<b>Hull material</b>	steel
<b>Hull colour</b>	red
<b>Hull thickness (mm)</b>	Uwbody 6 mm, hull 5 mm
<b>Hull shape</b>	round-bilged
<b>Superstructure material</b>	steel
<b>Superstructure (mm)</b>	4
<b>Deck plate thickness (mm)</b>	4
<b>Rubbing strake</b>	steel
<b>Deck material</b>	steel
<b>Deck finish</b>	non-skid paint
<b>Superstructure deck finish</b>	paint
<b>Cockpit deck finish</b>	non-skid paint
<b>Antifouling (year)</b>	2020 (tar)
<b>Window frame</b>	aluminium
<b>Window material</b>	double glazing 2018 & 2022
<b>Deckhatch</b>	yes
<b>Portholes</b>	yes



# BRONSVEEN KOTTER 1440

Insulation	yes
Mast can be lowered	manual
Fuel tank (litre)	steel 2000, integrated
Level indicator (fuel tank)	Sight gauge
Fuel daytank (litre)	steel 150
Level indicator (daytank)	Sight gauge
Freshwater tank (litre)	steel 1450, integrated
Blackwater tank (litre)	steel 100, integrated
Blackwater tank extraction	deck extraction + pump
Outside helm position	hydraulic
More info on hull	yes
Extra info	Superstructure and deck painted in 2020
Extra info	Hull painted in 2018

## ACCOMMODATION

Cabins	2
Berths	5
Interior	yes
Floor	carpet
Aft deck	yes
Saloon	yes
Headroom saloon (m)	1,97
Aft Cabin	yes
Dinette	yes
Dinette to convert into berth	1,80 x 1,30 m
Opening door to aft deck	yes
Galley	yes
Countertop	plastic
Sink	stainless steel
Cooker	electric Induction, 4-burner (only 3 burners working) (2021)
Microwave/oven combi	Sharp



# BRONSVEEN KOTTER 1440

Fridge	Liebherr
Freezer	Liebherr
Hot water system	220V + engine
Water pressure system	electrical
Kettle	yes
Coffee maker	yes
Owners cabin	double bed Aft, headroom 1,91 m
Bed length (m)	1,90 x 1,60
Wardrobe	hanging and shelves
Toilet	en suite
Toilet system	manual Jabsco
Wash basin	at the toilet
Guest cabin 1	v-bed Forward
Bed length (m)	2,00 x 1,90
Wardrobe	shelves
Shower	en suite Headroom 1,88 m
Washing machine/dryer combi	Fagor

## MACHINERY

No of engines	1
Make	John Deere
Type	6068 DFM 150
HP	150
kW	110.40
Fuel	diesel
Year installed	2013
Maximum speed (kn)	8,5
Cruising speed (kn)	6,5
Consumption (l/hr)	4
Engine hours	1688
Engine cooling system	closed keelcooling



# BRONSVEEN KOTTER 1440

Drive	shaft
Engine controls	bowden cable
Gearbox	hydraulic PRM
Bowthruster	electric
Exhaust	dry
Thrust bearing	yes
Propeller type	fixed
Propeller blades	3
Propeller shaft material	stainless steel
Shaft lubrication	oilbath
Manual bilge pump	yes
Electric bilge pump	yes
Electrical installation	24 V / 230 V
Generator	silent separator Vetus 7 kVA
Running hours generator	Unknown
Batteries	yes
Start battery	2 x
Service battery	8 x
Generator battery	1 x
Battery charger	yes
Inverter	Mastervolt 5000 W
Shorepower	with cable

## NAVIGATION

Electric compass	In autopilot
Depth sounder	In plotter
Log	In plotter
VHF	Sailor RT 2048 2x
Autopilot	Simrad AP24 (not functioning 100%)
Radar	Simrad (function not guaranteed)
Plotter/GPS	Simrad CX44



Navigation lights yes

## EQUIPMENT

Fixed windscreen	Foldable
Cockpit cover	yes
Cockpit chairs	yes
Boarding ladder	stainless steel
Anchor	Pool
Anchor chain	50 m, galvanized
Windlass	manual
Deck wash	External water
Sea railing	stainless steel
Grab rail (superstructure)	steel
Railing side opening gates	yes
Pushpit	yes
Pulpit	yes
Lifejackets	yes
Lifebuoy	yes
Wiper	yes
Horn	electric
Radar reflector	yes
Fenders	yes
Mooring lines	yes
TV	yes
Radio-cd player	2 x
Cockpit speakers	yes
Speakers in salon	yes
Clock - barometer	yes
Fire extinguisher	1 x
Latest extinguisher survey	Unknown
Extra info	Ball hitch on transom for bike rack







# BRONSVEEN KOTTER 1440



# BRONSVEEN KOTTER 1440



# BRONSVEEN KOTTER 1440



# BRONSVEEN KOTTER 1440



# BRONSVEEN KOTTER 1440



# BRONSVEEN KOTTER 1440



# BRONSVEEN KOTTER 1440

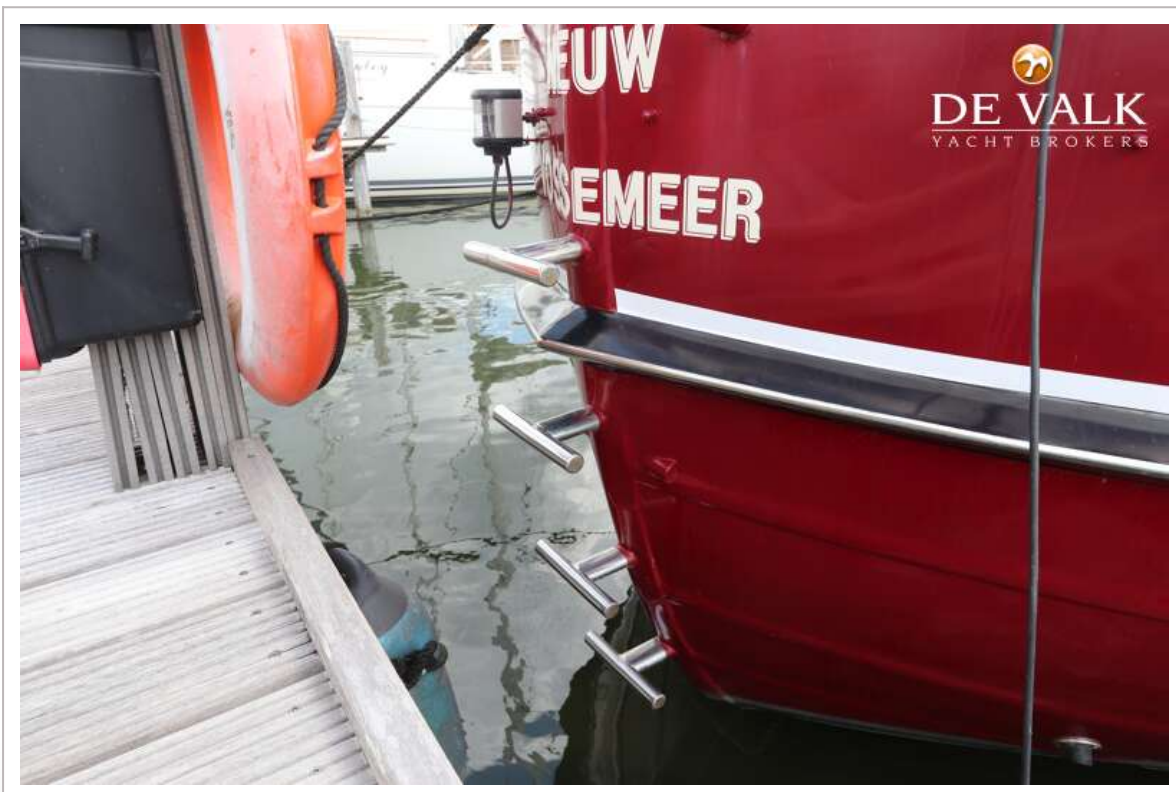
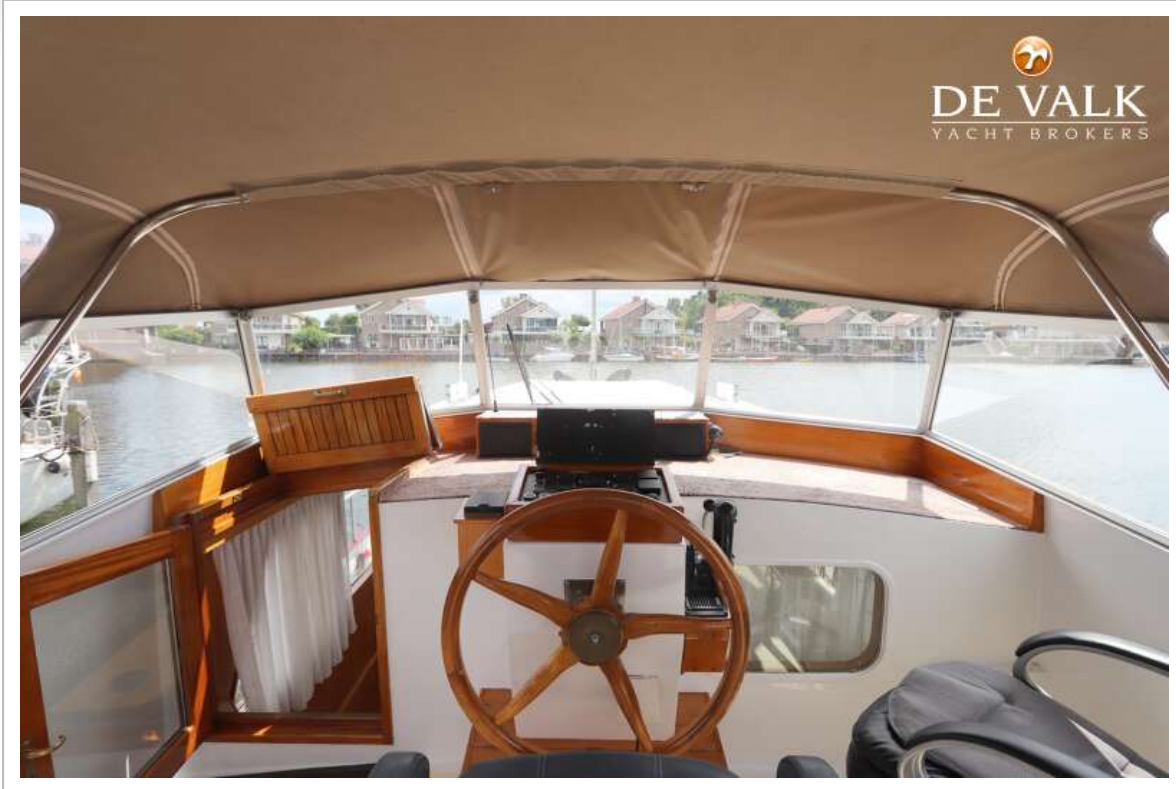


# BRONSVEEN KOTTER 1440





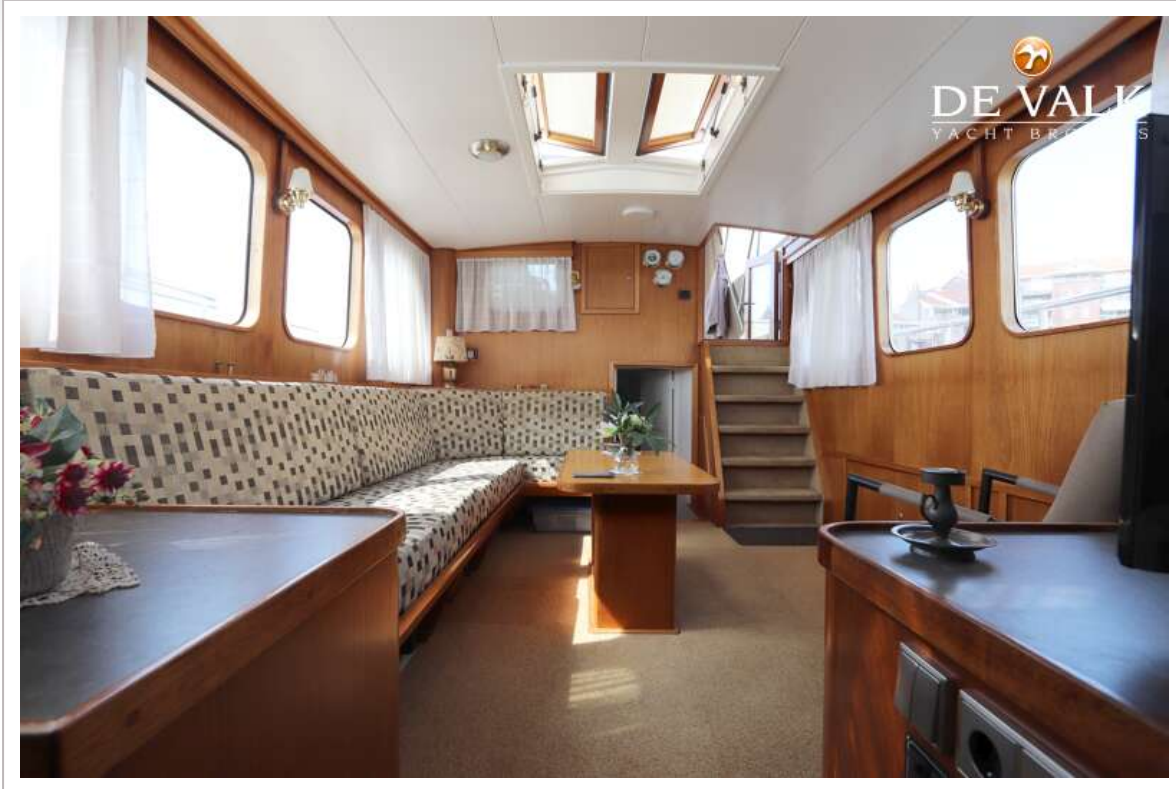
# BRONSVEEN KOTTER 1440



# BRONSVEEN KOTTER 1440



# BRONSVEEN KOTTER 1440



# BRONSVEEN KOTTER 1440



# BRONSVEEN KOTTER 1440



# BRONSVEEN KOTTER 1440



# BRONSVEEN KOTTER 1440

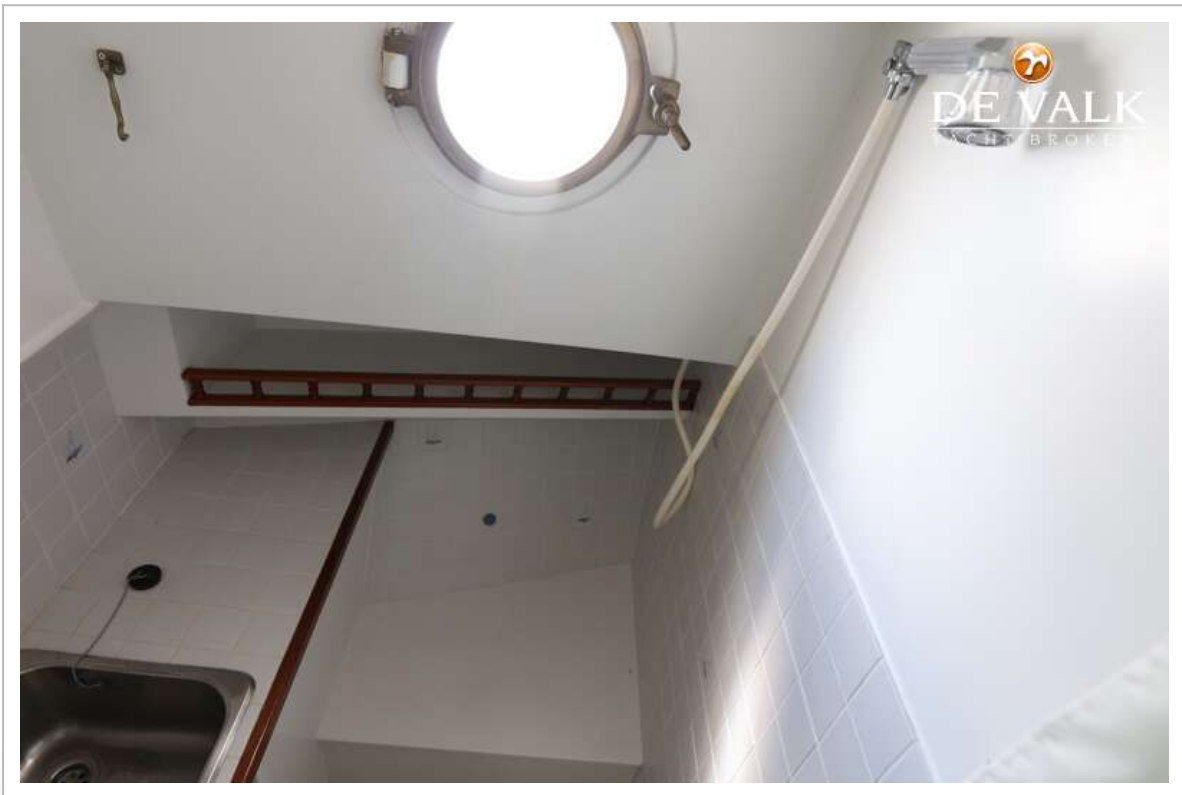


# BRONSVEEN KOTTER 1440

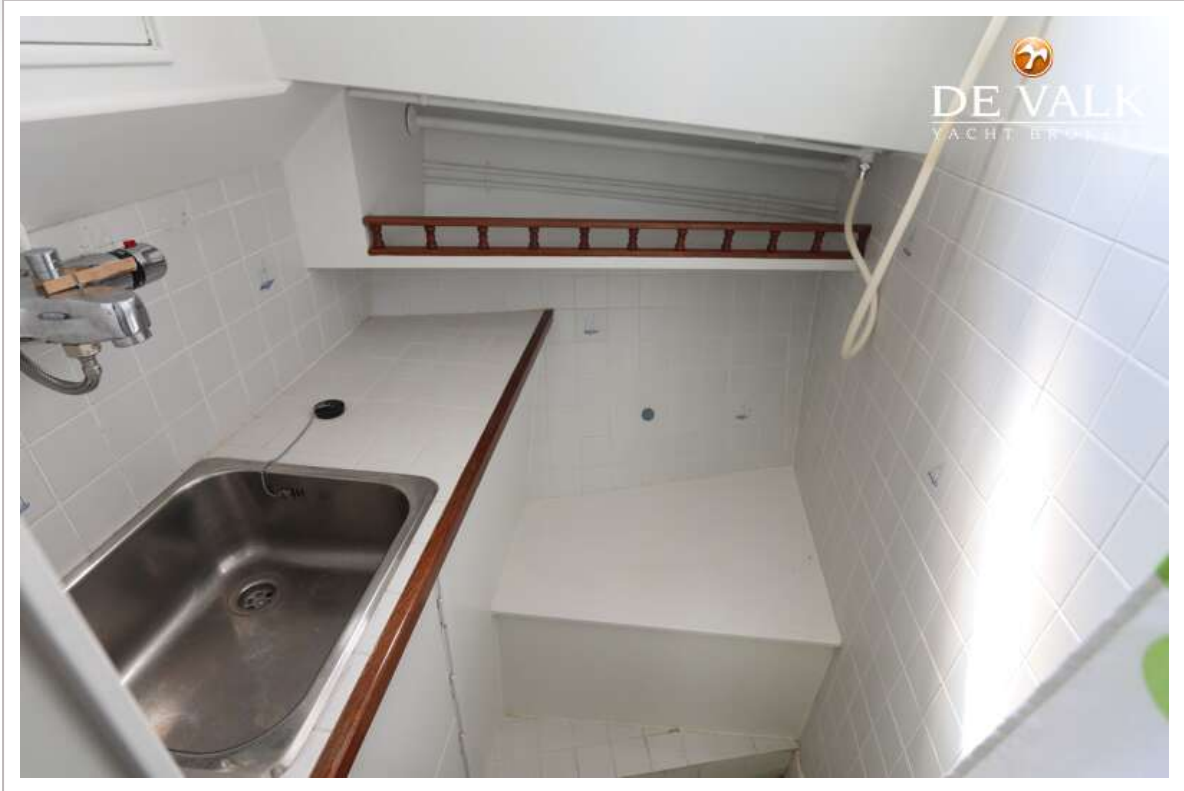




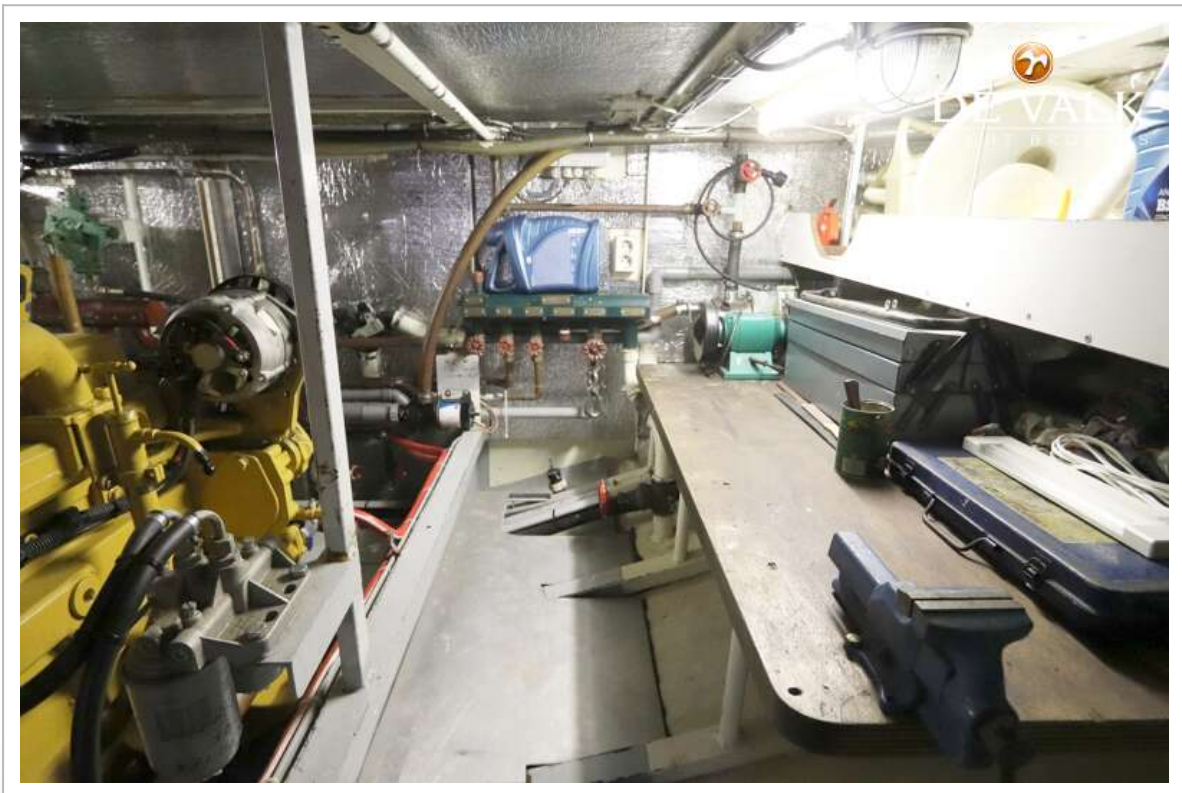
# BRONSVEEN KOTTER 1440



# BRONSVEEN KOTTER 1440



# BRONSVEEN KOTTER 1440



# BRONSVEEN KOTTER 1440

