



OPEN 50



DE VALK
YACHT BROKERS

BROKER'S COMMENTS

The spectacular open 50 hull, designed by Finot-Conq in 1998 for the solo round the world, has been one of the most successful mono hulls since. The famous ocean racer N. Malony nominated the Open 50 as the worlds coolest yacht in 2022. The hull and deck of Adrenaline were built in the US and shipped to Germany where G. Nissen designed the comfortable interior for a very fast racer/regatta cruiser. She can still do an average of 14kts and top over 20 kts with her fast hull. Fitted with NMAE 2000 full data system and B&G H3000 navigation equipment and a lifting keel for downwind speed.

Reinoud Bicker Caarten

SPECIFICATIONS

Dimensions	15.24 x 4.80 x 1,60 / 4.20 (m)	Builder	Leusdener Werft GmbH
Built	2007	Cabins	1
Material	GRP	Berths	3
Engine(s)	1 x Volvo Penta diesel	Hp/Kw	55.00 (hp), 40.48 (kw)
Asking price	sold (VAT)	Lying	at sales office

CONTACT

Sales office	De Valk Portugal	Telephone	+351 308 812321
Address	Edifício Administrativo - Ponta da Areia 8500 - 345 Portimão PT	E-mail	portugal@devalk.nl

DISCLAIMER

These particulars are given in good faith as supplied but cannot be guaranteed.



GENERAL

Model	OPEN 50
Type	sailing yacht
LOA (m)	15,24
LWL (m)	14,60
Beam (m)	4,80
Draft (m)	4,20
Draft min (m)	1,60
Air draft (m)	24,00
Headroom (m)	1,90
Year built	2007
Launched	2009
Builder	Leusdener Werft GmbH
Country	Germany
Designer	Georg Nissen
Displacement (t)	12,5
Ballast (tonnes)	cast iron Bulb 2,8, plus waterballast BB/SB 3
Gross tonnage	14.5
CE norm	A
Hull material	GRP
Keel type	lifting keel Hydraulic
Superstructure material	GRP
Deck material	GRP
Deck finish	TBS non-skid profile mats
Superstructure deck finish	TBS non-skid profile mats
Cockpit deck finish	non-skid paint
Antifouling (year)	2022
Window frame	aluminium
Window material	polycarbonate
Deckhatch	4
Portholes	aluminium 2



Insulation	foam plates
Fuel tank (litre)	aluminium 90L
Fuel tank 2 (litre)	aluminium 90L
Level indicator (fuel tank)	yes
Freshwater tank (litre)	epoxy 300
Blackwater tank (litre)	polyethylene 47L
Wheel steering	hydraulic Jafa double
Outside helm position	chain steering
More info on hull	Completely scraped, new primer, new epoxy 2 layers and 2x new racing anti-fouling, self polishing.
More info on paintwork	Wrapped
Extra info	Waterpump for ballast tanks renewed 2023

ACCOMMODATION

Cabins	1
Berths	3
Interior	cherry
Floor	teak and holly
Open cockpit	yes
Doghouse	yes
Headroom saloon (m)	1,92
Heating	electric 220V
Aft Cabin	2 bunkbeds
Dinette	L shaped settee
Galley	yes
Countertop	wood
Sink	stainless steel Double
Cooker	calor gas 2 burner
Oven	yes
Microwave/oven combi	yes
Fridge	60L



Freezer	In fridge
Hot water system	220V
Water pressure system	electrical
Manual and/or foot pump	yes
Kettle	yes
Crockery	yes
Owners cabin	yes
Bed length (m)	2,10m x2,30m
Wardrobe	hanging/drawers/shelves
Bathroom	separate
Toilet	shared
Toilet system	manual
Wash basin	in the bathroom
Shower	shared
Guest cabin 1	v-bed On SB side aft in Saloon
Bed length (m)	2m x 1,4m
Bathroom	shared

MACHINERY

No of engines	1
Make	Volvo Penta
HP	55
kW	40.48
Fuel	diesel
Year installed	2007
Maximum speed (kn)	8
Cruising speed (kn)	6
Consumption (l/hr)	3
Range (nm)	360
Engine hours	230
Engine cooling system	seawater



Drive	sail-drive
Saildrive seal	Completely serviced 9/2022
Shaft seal	Renewed 2021
Engine controls	bowden cable
Gearbox	mechanical
Engine controls	bowden cable
Propeller type	folding
Propeller blades	3
Propeller shaft material	stainless steel
Shaft lubrication	oilbath
Manual bilge pump	yes
Electric bilge pump	yes
Bilge alarm	yes
Electrical installation	12V 220v
Generator	dry exhaust Portable
Start battery	80Ah
Service battery	2x new 2021
Windlass battery	New 2022 with dedicated mastervolt charger
Battery monitor	DC6000 Victron
Battery charger/inverter	Victron
Wind generator	Watt&sea generator
Shorepower	with cable

NAVIGATION

Compass	Contest 2x at steering pos.
Electric compass	In autopilot
Multi control display	B&G V12 12 inch touch
Depth sounder/log	yes
Forw. looking depth sounder	B&G H3000
Windset	B&G H3000
VHF	B&G V60



VHF handheld	B&G
Autopilot	B&G
Radar	NAIS 500
GPS	B&G
Radar/GPS/plotter	B&G 500 12inch
Weather receiver	Iridium GO
Wifi antenna	GLOMEX Webboat system
Electronic chart(s)	Avionics, complete mediterranean
AIS transceiver	yes
EPIRB	yes
Navigation lights	LED
Extra info	Navigation equipment B&G H3000 series
Extra info	Complete B&G NMEA 2000 data system

EQUIPMENT

Sprayhood	new 2022 With windows
Sun awning	yes
Cockpit cushions	yes
Cockpit table	yes
Bathing platform	yes
Boarding ladder	yes
Anchor	CQR Plough
Anchor chain	90m 10mm Galvanized steel
Anchor 2	Delta Aft
Anchor chain	Rope
Windlass	electrical New 2022 1400W
Capstan	yes
Sea railing	wire
Railing side opening gates	yes
Pushpit	yes
Pulpit	yes



Life raft	container
Lifejackets	yes
Safety harness	yes
Danbuoy	yes
Safety lines on deck	yes
Fenders	yes
Mooring lines	yes
Spare parts	yes
Tools	yes
Radio-cd player	yes
Speakers in salon	yes
Clock - barometer	yes
Fire extinguisher	1x in saloon

RIGGING

Rigging	sloop
Standing rigging	Rod
Brand mast	Nordica
Material mast	Mast and boom made of Carbon
Spreaders	3x2
Keel stepped mast	yes
Mainsail	95m2
Mainsail cover	yes
Battcars	Ronstan
Fully battened mainsail	5 battens
Genoa	Quantum 49m2
Genoa I	Quantum 36m2
Code Zero	Quantum 118m2
Stormjib	yes
Reefing System	quick-one-line-reefing
Backstay adjuster	tackle



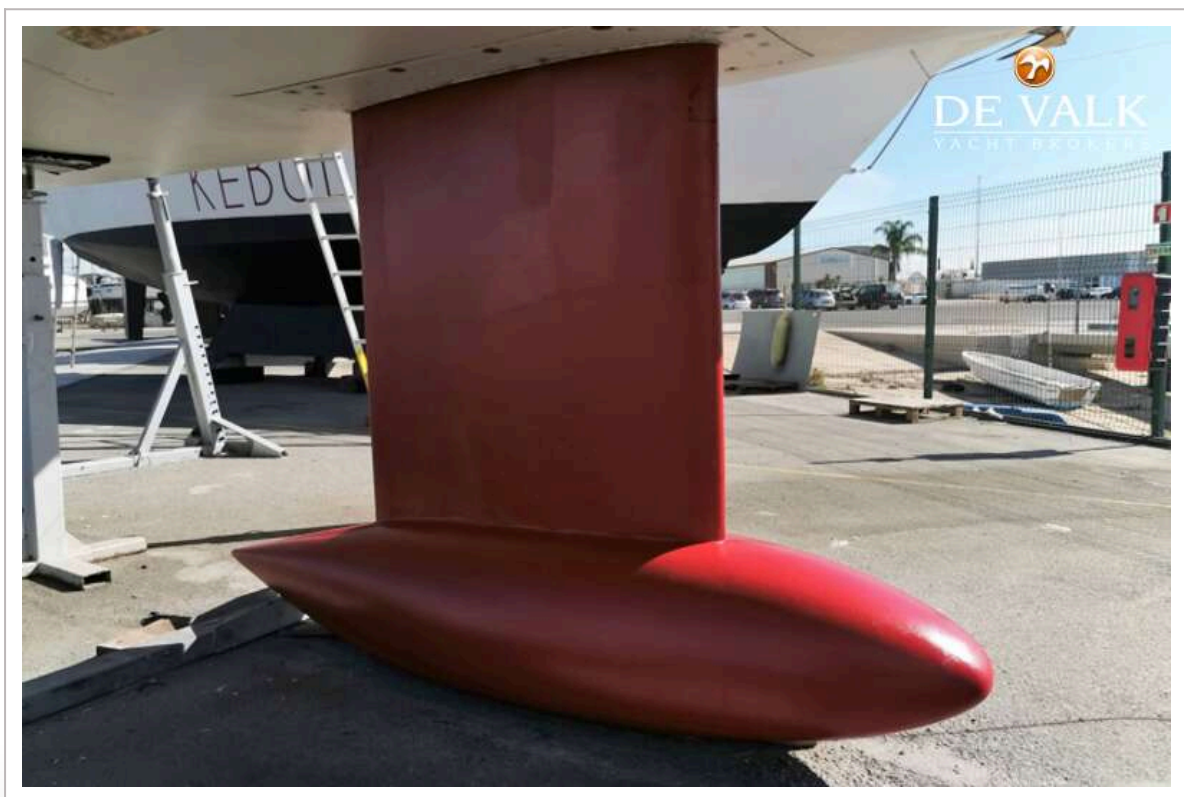
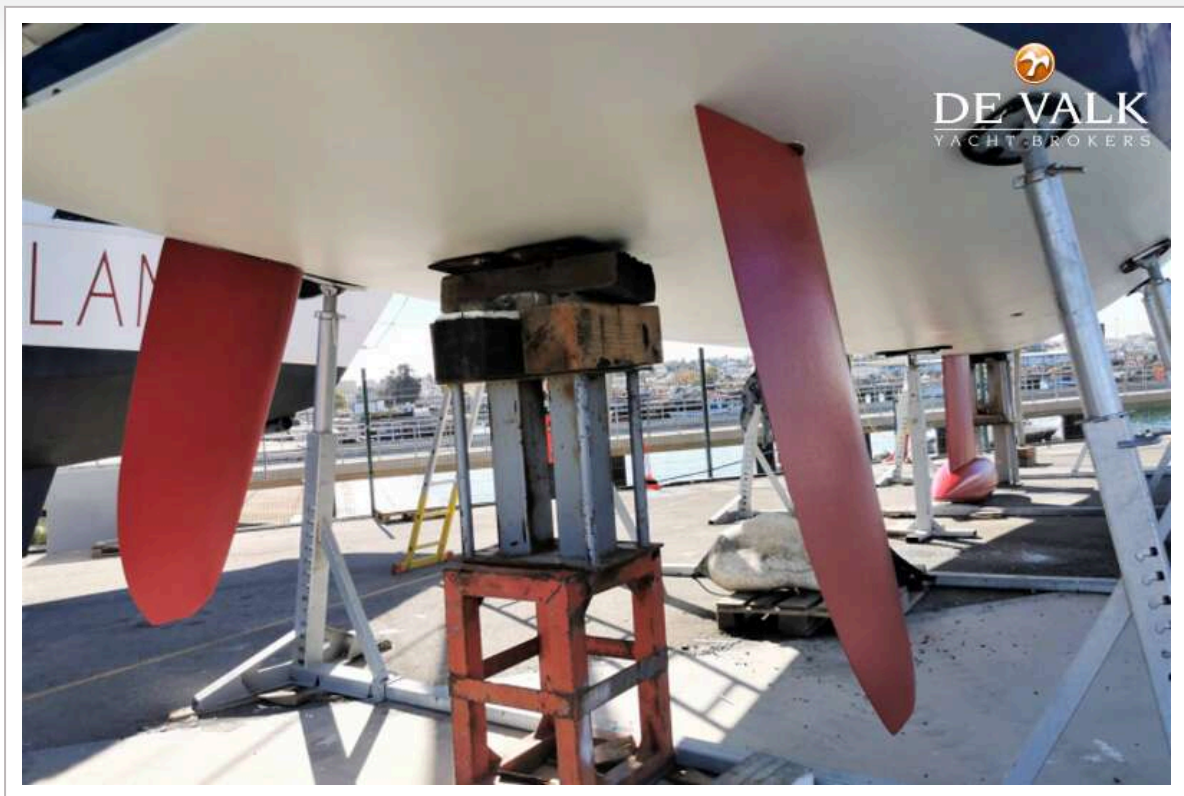
Boomvang	tackle
Primary sheet winch	2x Anderson 52ST
Secondary sheet winch	2x Anderson 52 ST
Halyard winches	1x Anderson 52ST electric
Multifunctional winches	1x Anderson 40ST on traveller



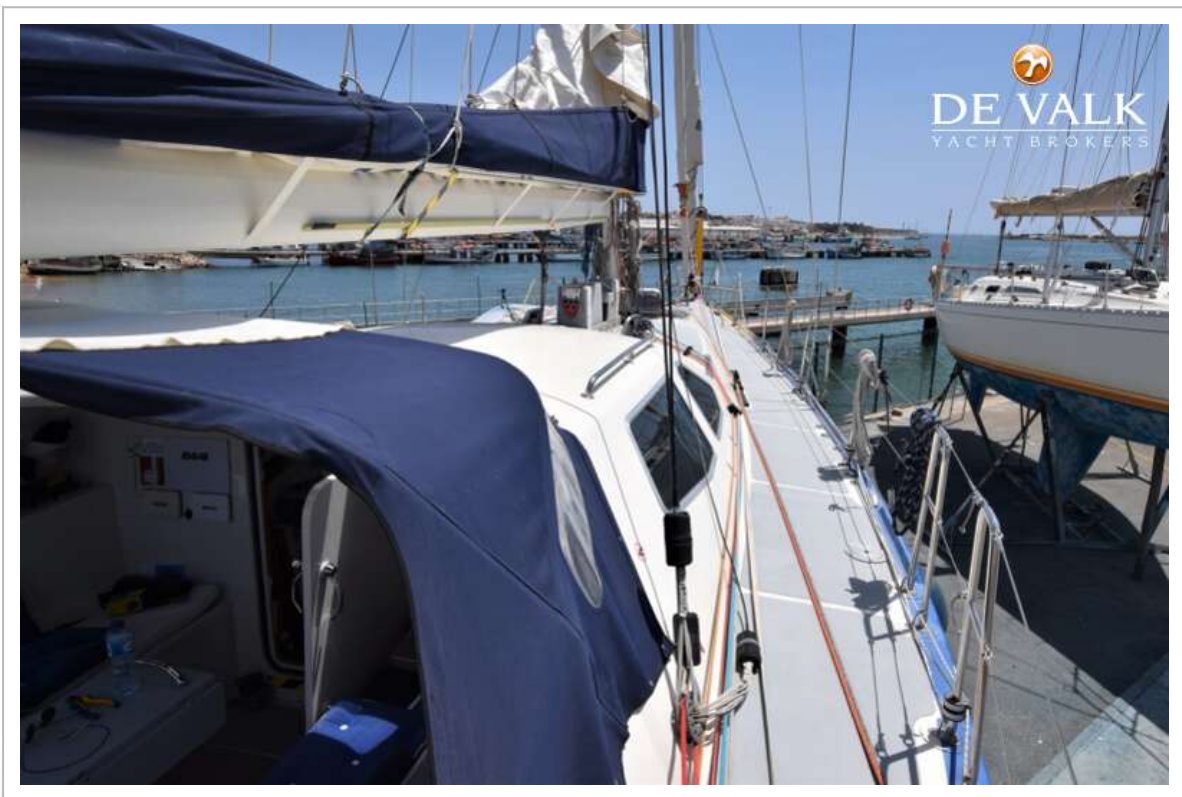


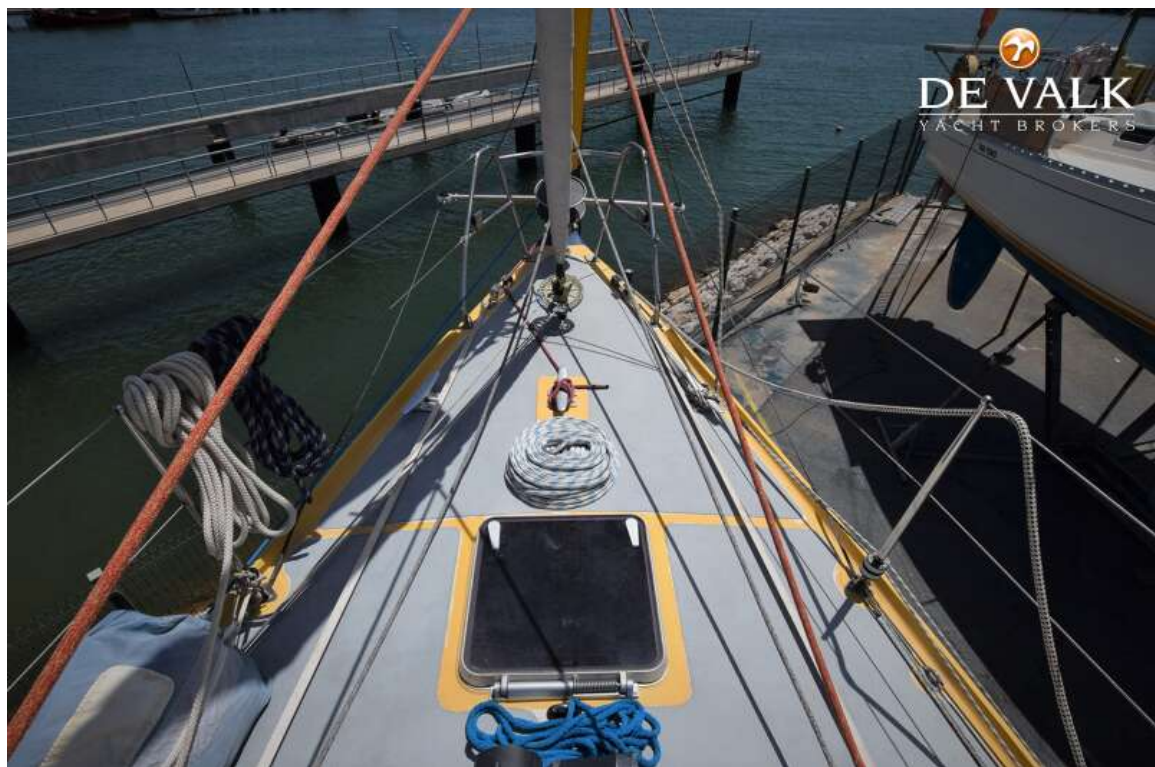


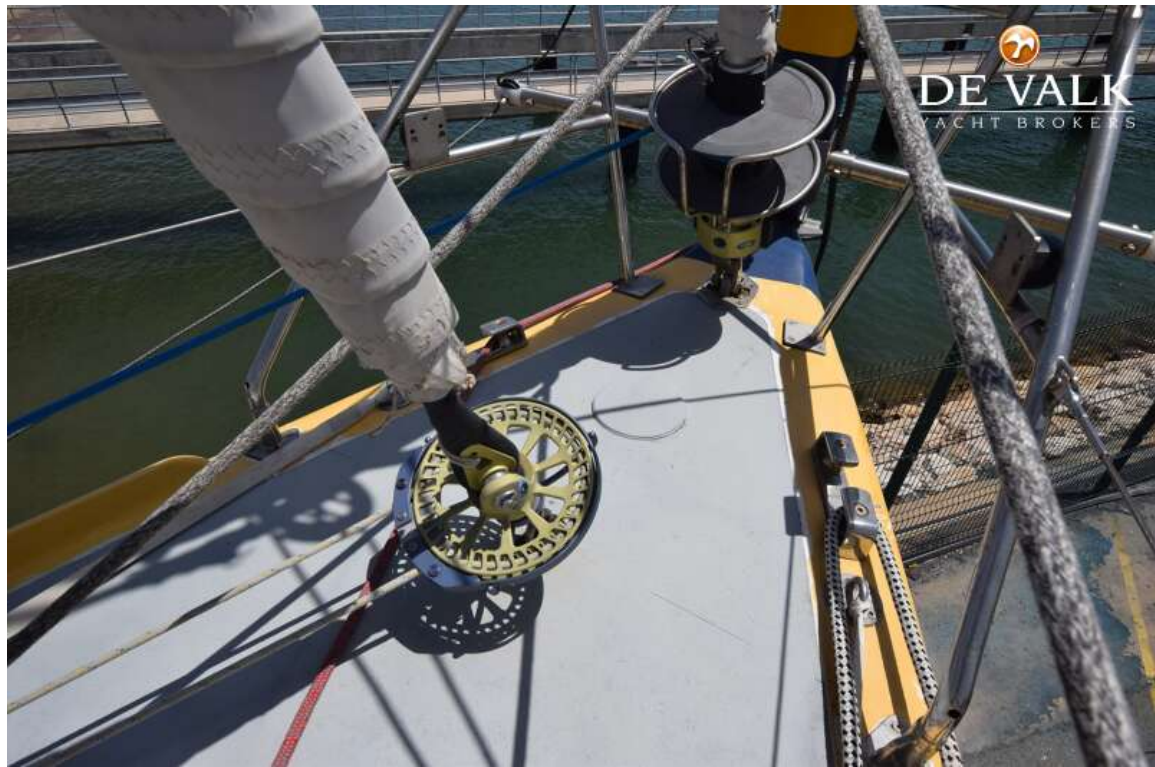


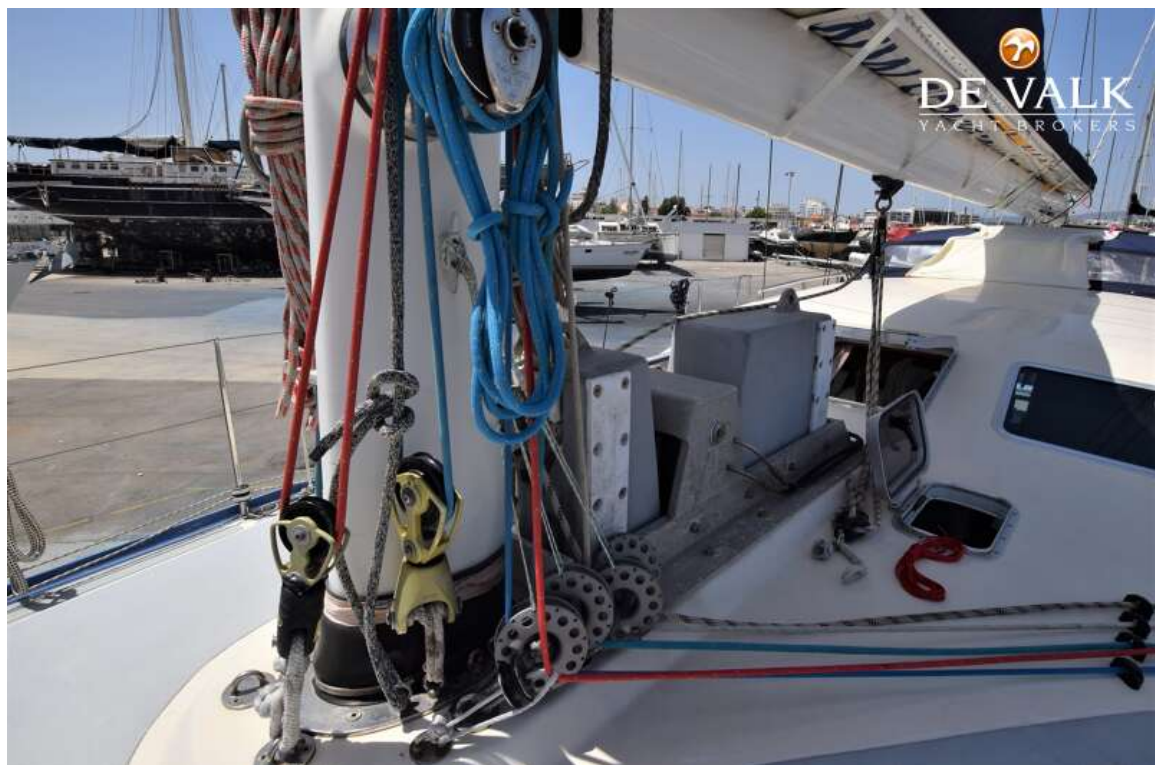








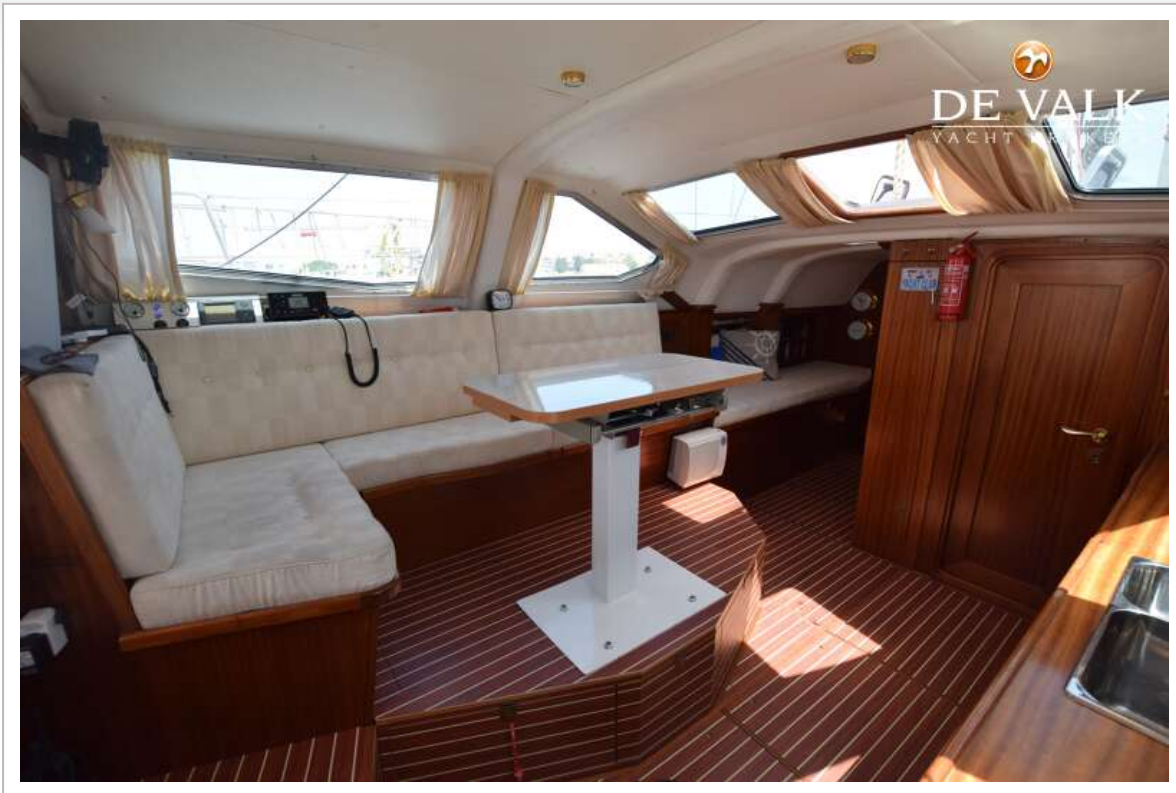




OPEN 50



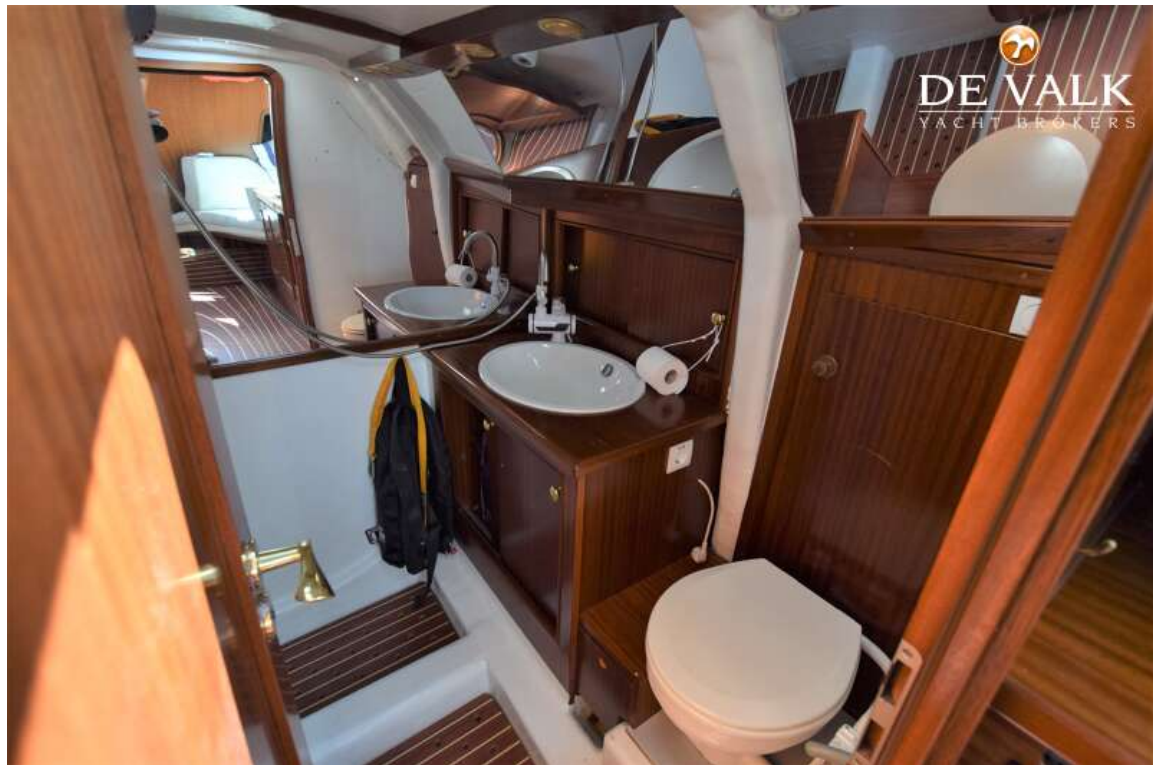
OPEN 50

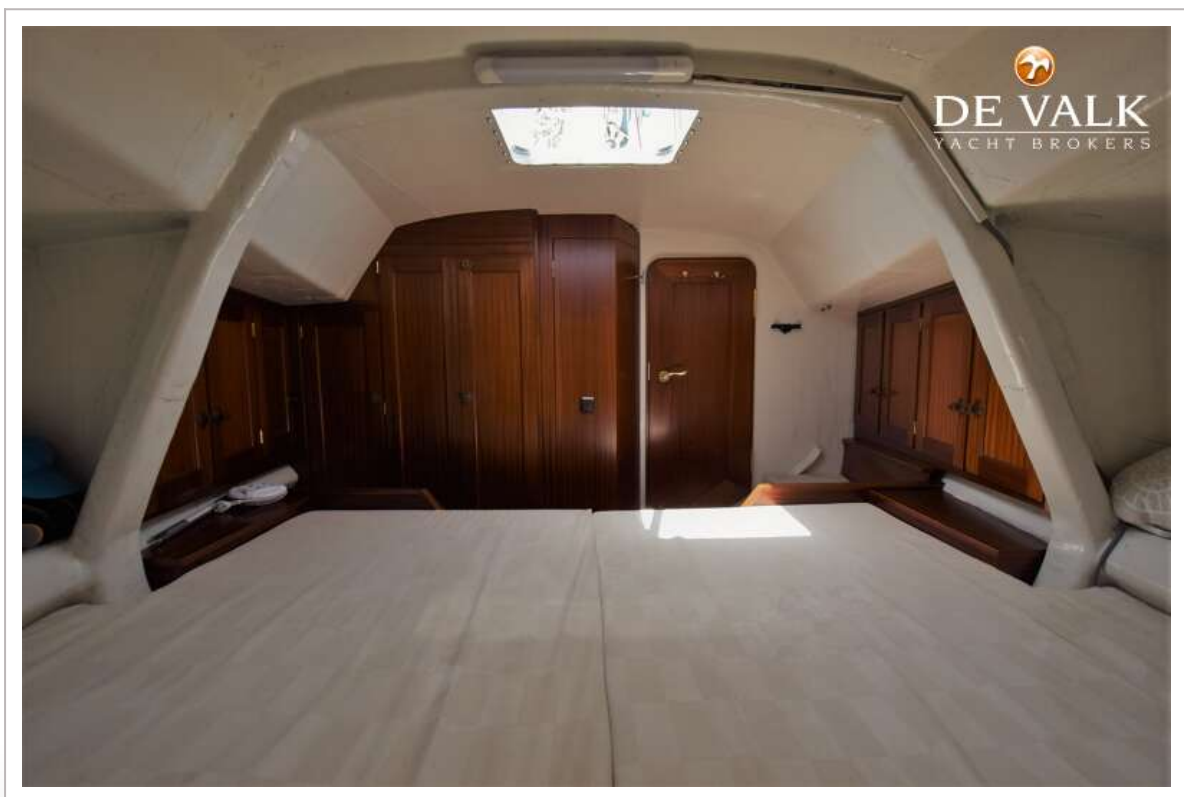


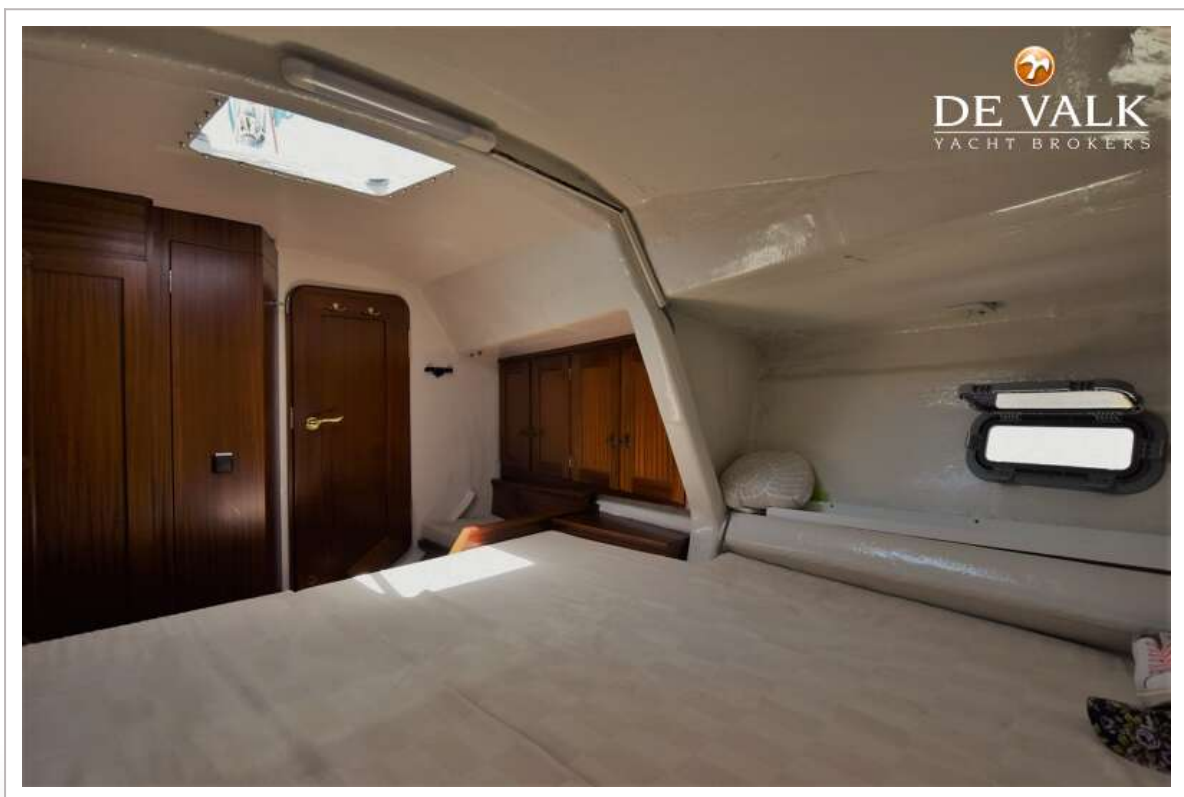
OPEN 50



OPEN 50







OPEN 50

