



BAVARIA 35 HOLIDAY SPORT

BAVARIA 35 HOLIDAY SPORT

BROKER'S COMMENTS

The Bavaria 35 Holiday is an excellent choice for sailors seeking a blend of performance and comfort. With its spacious interior and well-thought-out layout, this yacht is perfect for family cruising or entertaining friends. The three-cabin version offers ample sleeping accommodations, while the generously sized saloon provides a cozy yet airy space for relaxation. On deck, the Bavaria 35 Holiday is easy to handle, featuring a well-proportioned sail plan and thoughtful deck design, making it manageable for solo or short-handed sailing.

Hans Visser

SPECIFICATIONS

Dimensions	10.95 x 3.70 x 1.45 (m)	Builder	Bavaria Yachts GMBH
Built	1997	Cabins	3
Material	GRP	Berths	7
Engine(s)	1 x Volvo D1-30F diesel	Hp/Kw	29.00 (hp), 21.34 (kw)
Asking price	sold (VAT)	Lying	at sales office

CONTACT

Sales office	De Valk Hindeloopen B.V.	Telephone	+31 514 52 40 00
Address	Oosterstrand 1 8713 JS Hindeloopen NL	E-mail	hindeloopen@devalk.nl

DISCLAIMER

These particulars are given in good faith as supplied but cannot be guaranteed.



GENERAL

Model	BAVARIA 35 HOLIDAY SPORT
Type	sailing yacht
LOA (m)	10,95
Beam (m)	3,70
Draft (m)	1,45
Headroom (m)	1,90
Year built	1997
Launched	1997
Builder	Bavaria Yachts GMBH
Country	Germany
Designer	J & J design
Displacement (t)	5,3
Ballast (tonnes)	1,45
Hull material	GRP
Hull colour	white
Hull shape	round-bilged
Keel type	bulb keel
Superstructure material	GRP
Deck material	GRP
Deck finish	teak Glued
Superstructure deck finish	non-skid moulded in
Cockpit deck finish	teak
Antifouling (year)	2024 all the old removed then primer and 2 coats AF
Window material	perspex
Deckhatch	2x
Portholes	yes
Fuel tank (litre)	stainless steel 150 ltr.
Level indicator (fuel tank)	yes
Freshwater tank (litre)	200 ltr.
Level indicator (freshwater)	yes



Wheel steering	cable steering
Emergency tiller	yes

ACCOMMODATION

Cabins	3
Berths	7
Interior	mahogany
Layout	Classic
Floor	parquet
Saloon	yes
Headroom saloon (m)	1,90
Heating	diesel ducted hot air Webasto
Navigation center	yes
Chart table	yes
Aft Cabin	2 x
Sliding door to cockpit	yes
Galley	Alongside to port
Countertop	plastic
Sink	stainless steel 2x
Cooker	calor gas 2 burner half cardanic
Oven	Calor gas in cooker
Fridge	Dometic serie 80 cu85 12/24V new 2020
Hot water system	220V + engine
Water pressure system	electrical Jabsco
Owners cabin	v-bed
Bed length (m)	1,90 mtr.
Wardrobe	hanging and shelves
Bathroom	separate
Toilet	shared
Toilet system	manual Jabsco new pump 2024
Wash basin	in the bathroom



Shower	shared
Extra info	New 17 CM mattresses July 2023
Guest cabin 1	double bed
Bed length (m)	2,00 mtr.
Wardrobe	hanging and shelves
Bathroom	shared
Toilet	shared
Shower	shared
Guest cabin 2	double bed
Bed length (m)	2,00 mtr.
Wardrobe	hanging and shelves
Bathroom	shared
Toilet	shared
Shower	shared

MACHINERY

No of engines	1
Make	Volvo
Type	D1-30F
HP	29
kW	21.34
Fuel	diesel
Year installed	2017
Maximum speed (kn)	6,5
Cruising speed (kn)	5,4
Consumption (l/hr)	2,5
Engine cooling system	freshwater heat exchanger
Drive	sail-drive
Saildrive seal	New seal 2022
Engine controls	mechanical
Bowthruster	water jet



Propeller type	folding
Propeller blades	2
Manual bilge pump	yes
Electrical installation	12 V DC and 220 V AC
Start battery	1x 12 V 55 Ah
Service battery	1x 12 V 140 AH august 2022
Bowthruster battery	2x 12 V 170 AH
Battery charger	Blue smart IP12/30 8-2022
Battery charger/inverter	Victron 08-2022
Shorepower	with cable

NAVIGATION

Compass	yes
Depth sounder/log	Data from: Autohelm tridata LCD-screen
Windset	Data from: Autohelm Wind LCD-screen
Repeater	Autohelm Navdata defect
VHF	Simrad RS81
GPS	yes
Plotter	Simrad CR34 + Raytheon rc320 Defect
Navigation lights	yes

EQUIPMENT

Sprayhood	Zeilmakerij Kuiper
Cockpit cover	2019
Bimini	2023
Cockpit table	yes
Bathing platform	yes
Boarding ladder	stainless steel
Deck shower	yes
Anchor	Bruce
Sea railing	yes



Pushpit	yes
Pulpit	yes
Radar reflector	yes
Fenders	yes
Mooring lines	yes
TV	2024
Radio-cd player	JVC KD-561DBT -1DIN Mechless DAB+
Clock - barometer	yes
Fire extinguisher	yes

RIGGING

Rigging	sloop
Standing rigging	wire
Brand mast	Seldén
Material mast	aluminium
Spreaders	2 sets swept aft
Mainsail	yes
Mainsail cover	yes
Jib	yes
Genoa	New 2020
Genoa furler	Furlex
Genoa cover	New 2020
Reefing System	slabreefing 2 reefs led to cockpit
Backstay adjuster	mechanical
Boomvang	mechanical
Primary sheet winch	2x Harken 40 2 speed self tailing
Halyard winches	2x Harken 38 2 speed self tailing
Reefing winch	yes
Spi-pole	yes



BAVARIA 35 HOLIDAY SPORT



BAVARIA 35 HOLIDAY SPORT



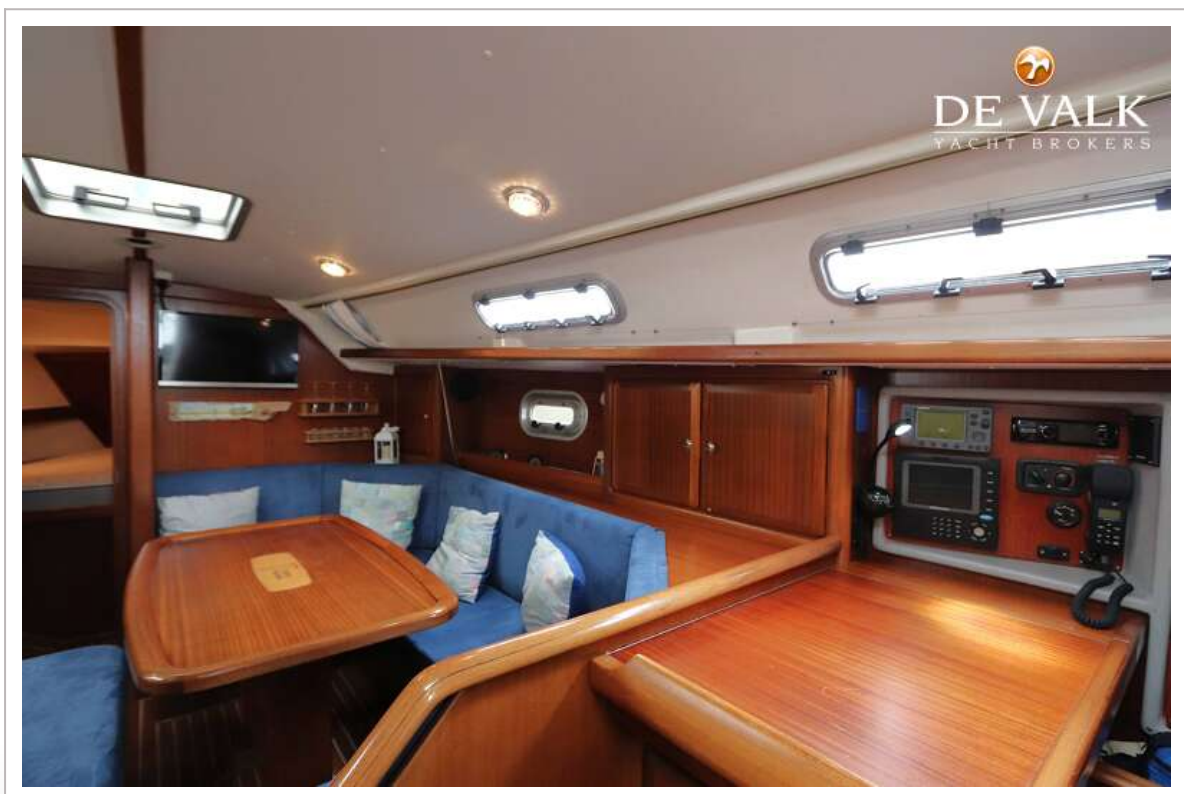
BAVARIA 35 HOLIDAY SPORT



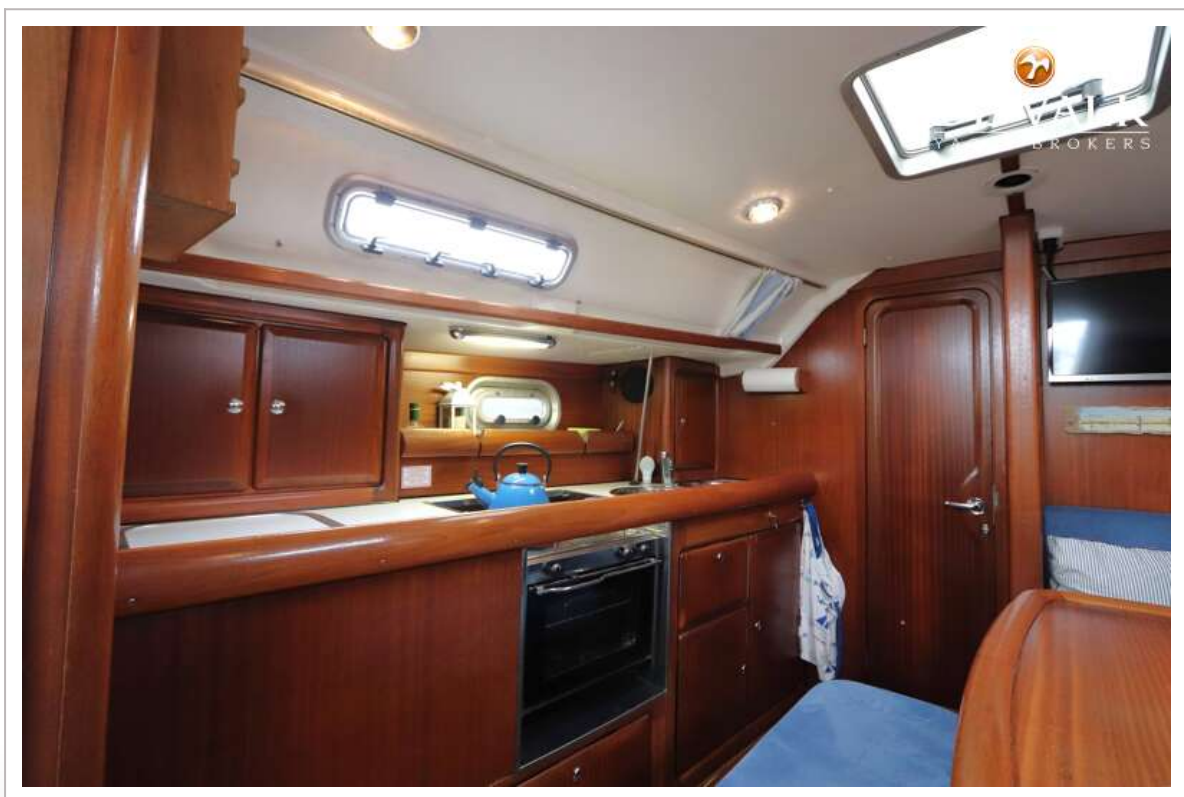
BAVARIA 35 HOLIDAY SPORT



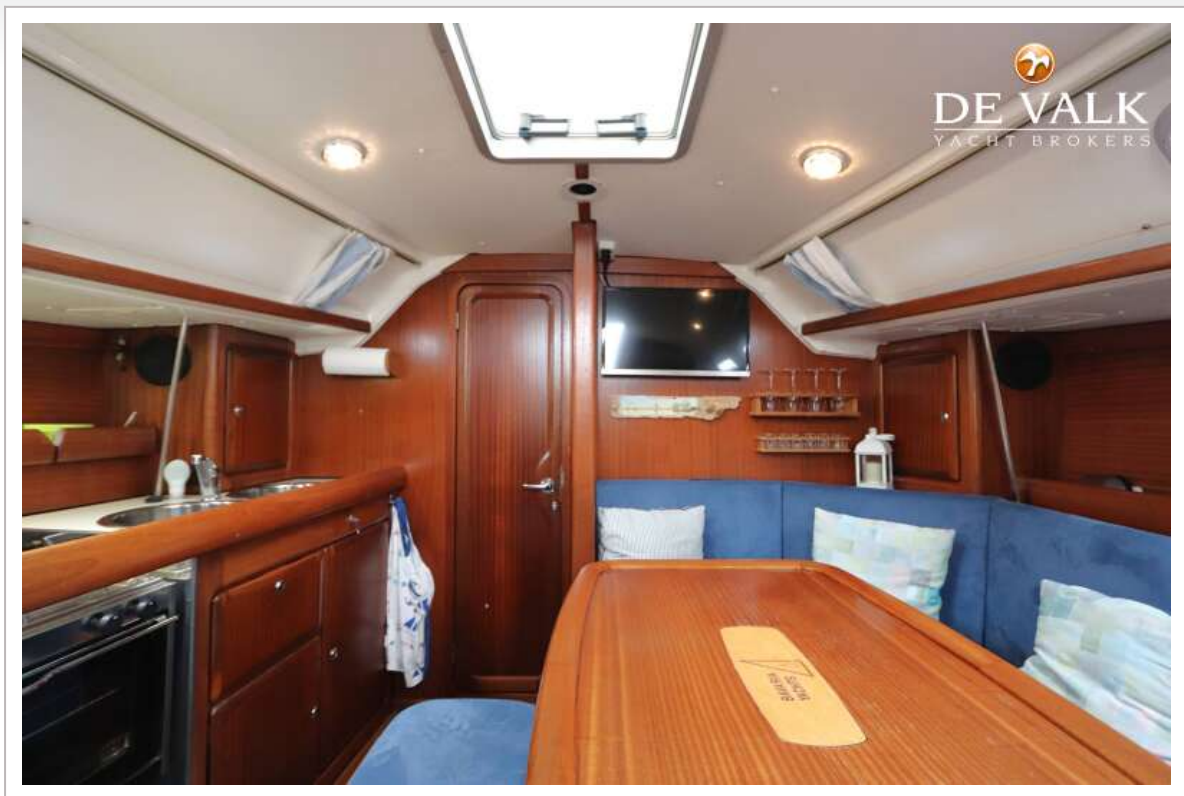
BAVARIA 35 HOLIDAY SPORT



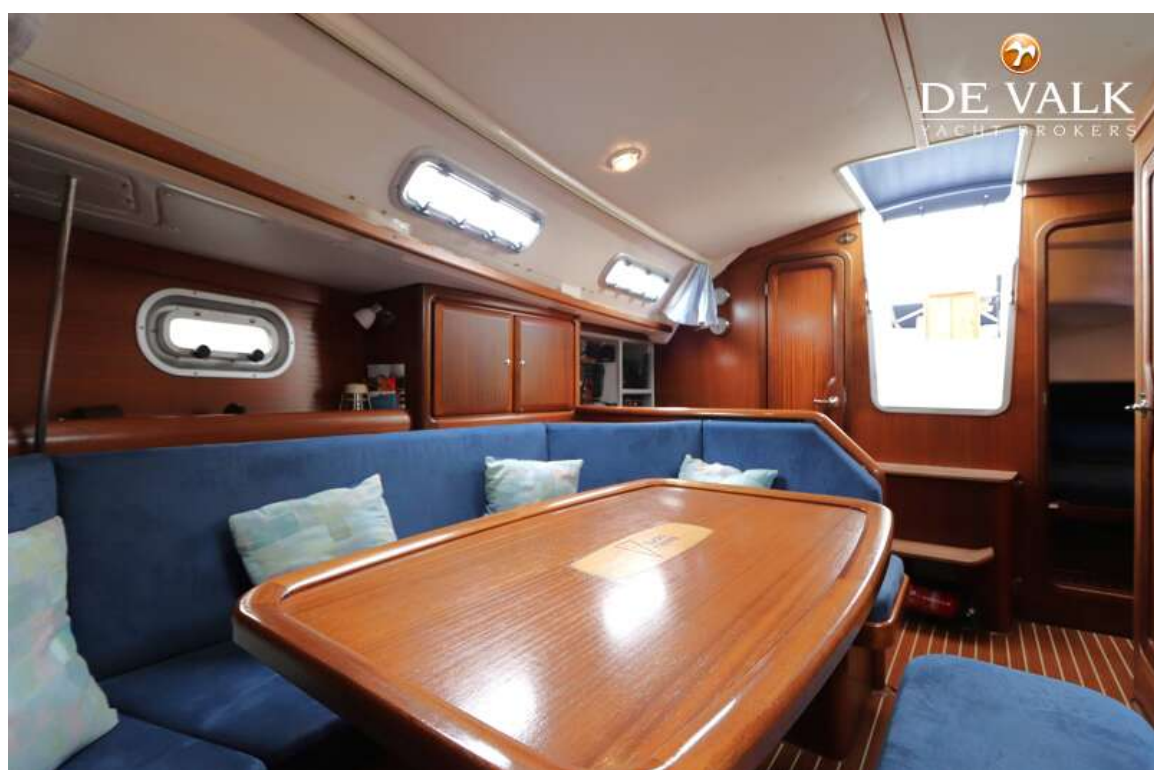
BAVARIA 35 HOLIDAY SPORT



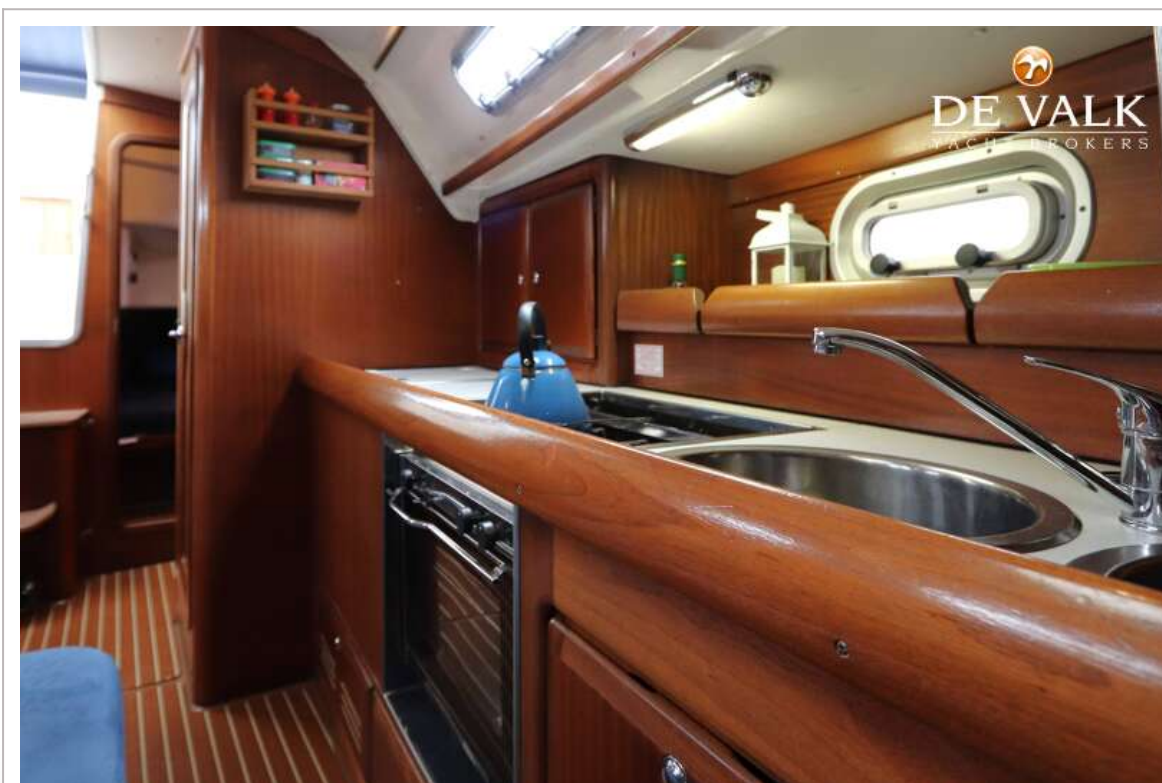
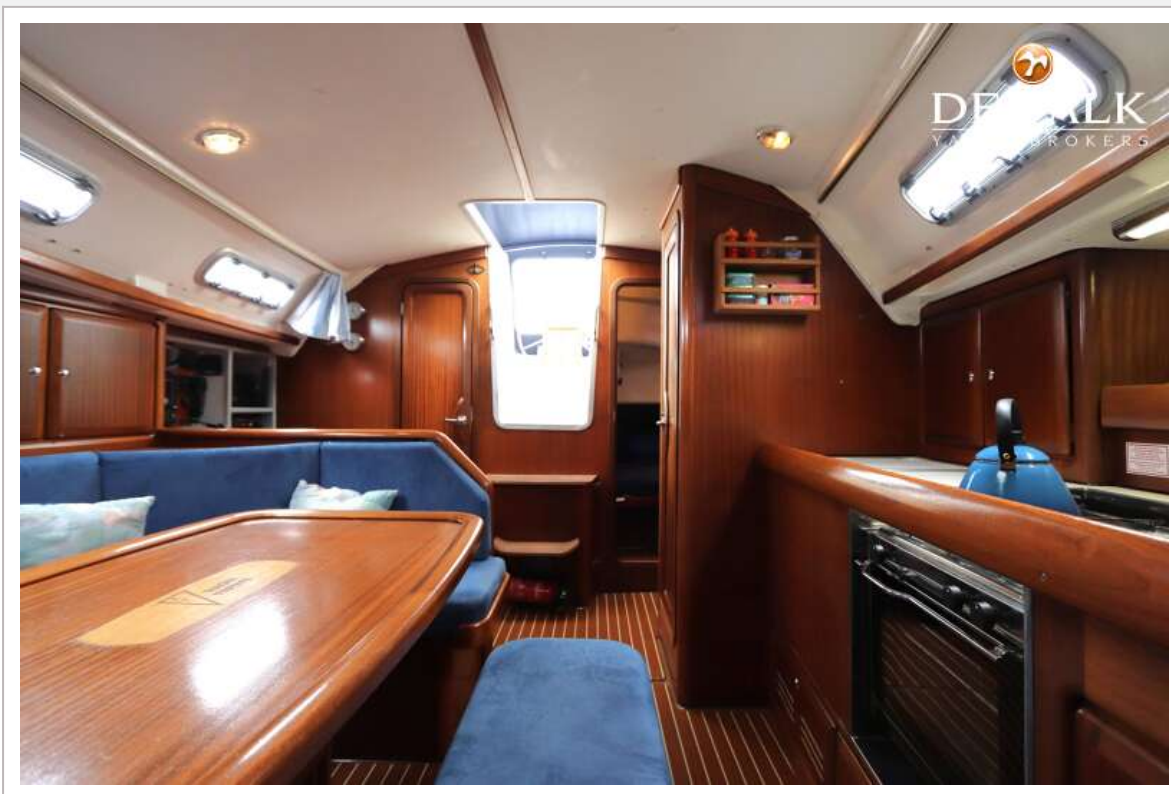
BAVARIA 35 HOLIDAY SPORT



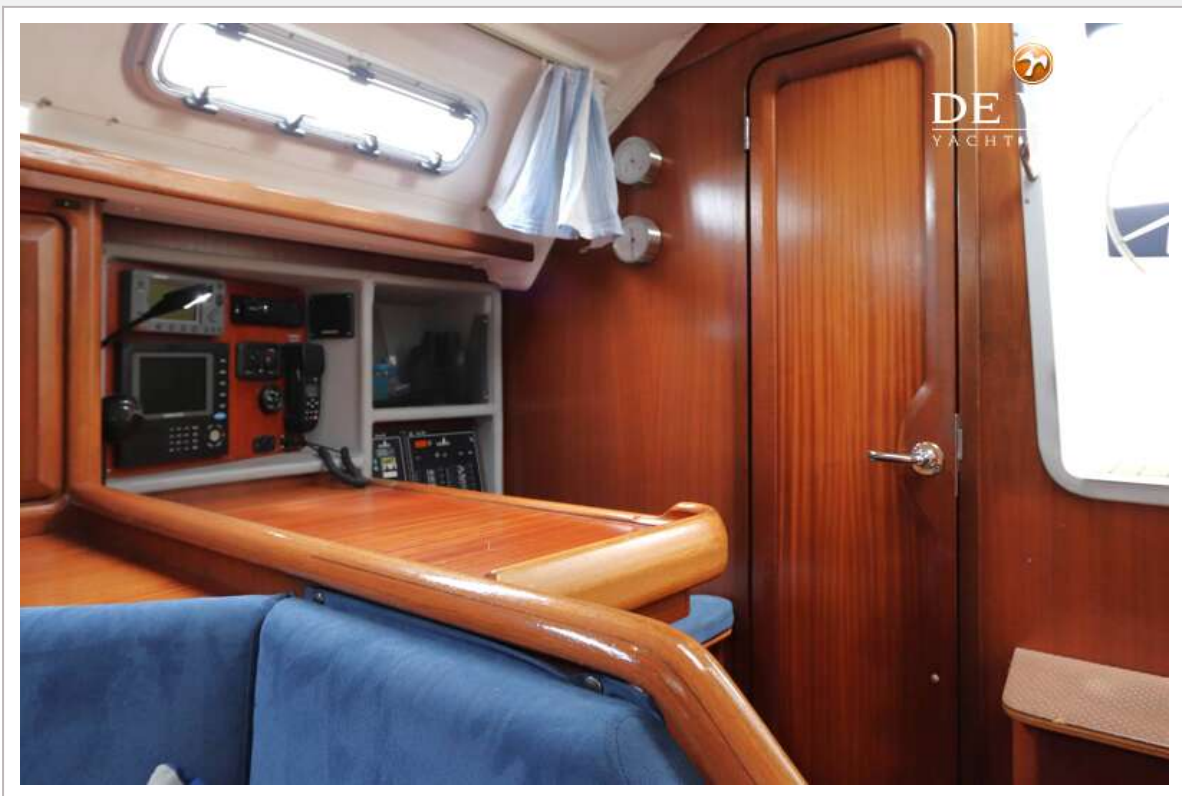
BAVARIA 35 HOLIDAY SPORT



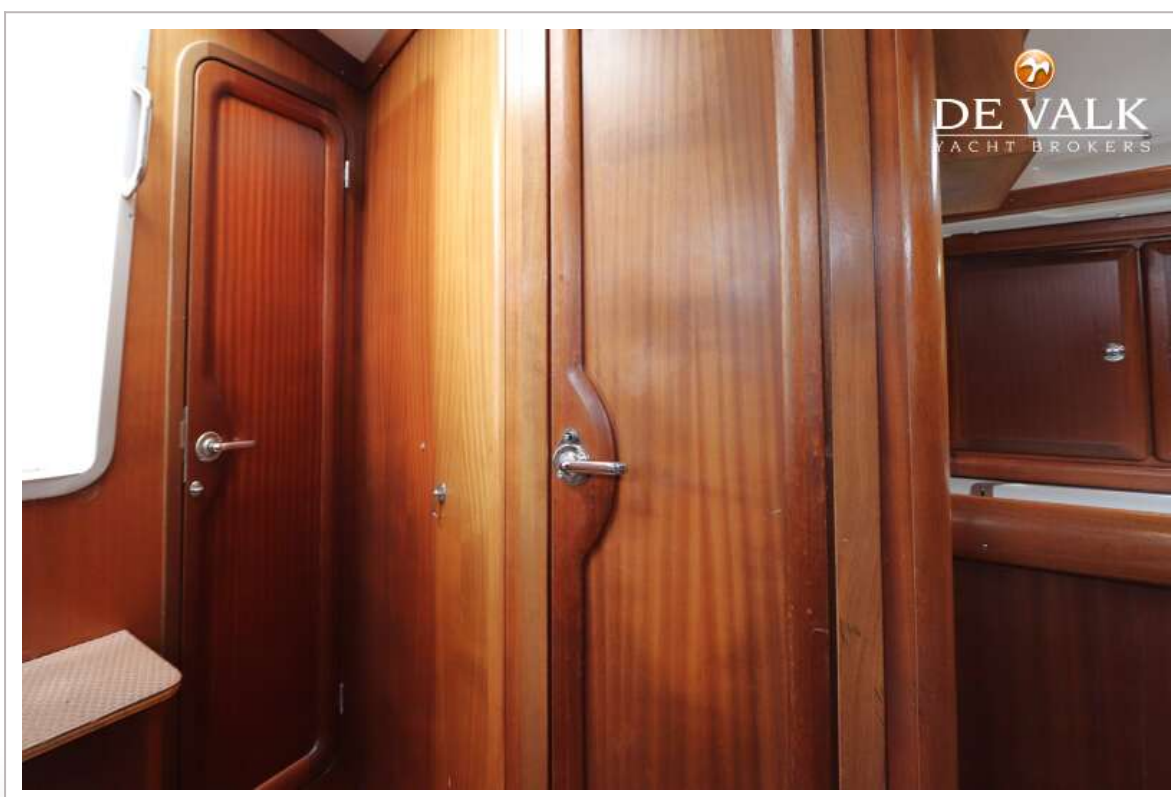
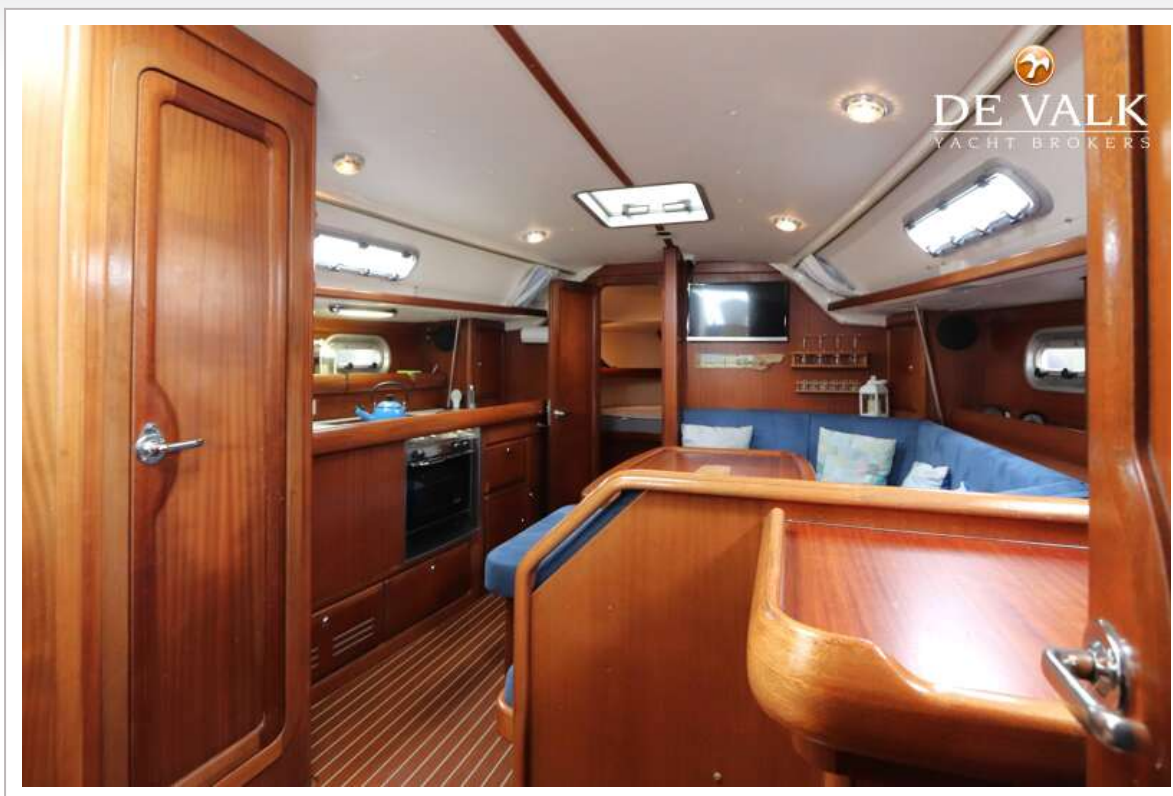
BAVARIA 35 HOLIDAY SPORT



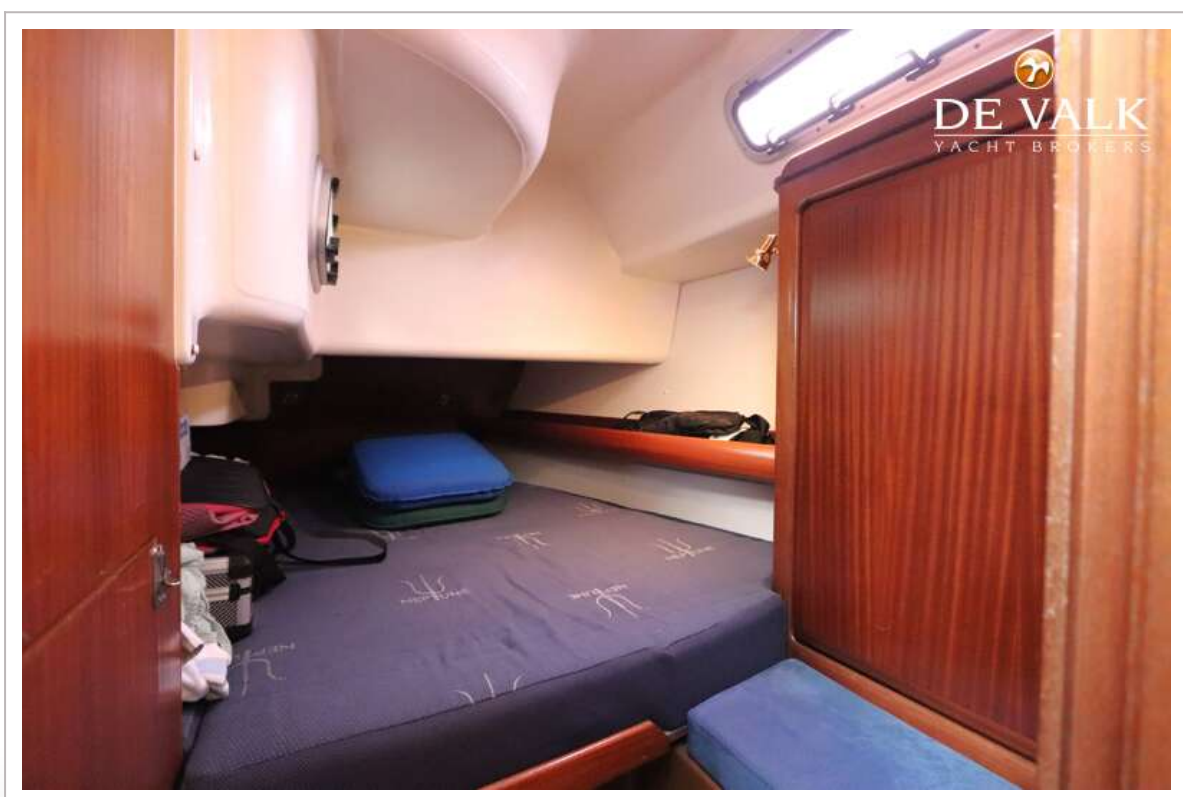
BAVARIA 35 HOLIDAY SPORT



BAVARIA 35 HOLIDAY SPORT



BAVARIA 35 HOLIDAY SPORT



BAVARIA 35 HOLIDAY SPORT

