



DE VALK  
YACHT BROKERS



FEADSHIP VAN LENT



DE VALK  
YACHT BROKERS

## BROKER'S COMMENTS

The Feadship van Lent will be auctioned online at Bright Auctions. Bids can only be placed online at Bright Auctions. All information about the auction is available on the website <https://bit.ly/4ko8FKp> A classic motor yacht with character and a timeless appearance. The current owner is the third owner of the yacht and has kept her as original as possible especially the interior. An hull report is available, providing additional insight into the condition of the vessel.

*Mark Hesselmans*

## SPECIFICATIONS

<b>Dimensions</b>	15.57 x 4.30 x 1.40 (m)	<b>Builder</b>	Feadship Van Lent
<b>Built</b>	1965	<b>Cabins</b>	2
<b>Material</b>	Steel	<b>Berths</b>	4
<b>Engine(s)</b>	2 x Mercedes OM352 diesel	<b>Hp/Kw</b>	2 x 125.00 (hp), 92.00 (kw)
<b>Asking price</b>	€ 199.500 (VAT Paid)	<b>Lying</b>	contact Loosdrecht

## CONTACT

<b>Sales office</b>	De Valk Loosdrecht B.V.	<b>Telephone</b>	+31 (0)35 582 90 30
<b>Address</b>	't Breukeleveense Meentje 6 1231LM Loosdrecht / Wijdemeren NL	<b>E-mail</b>	loosdrecht@devalk.nl

## DISCLAIMER

These particulars are given in good faith as supplied but cannot be guaranteed.



## GENERAL

<b>Model</b>	FEADSHIP VAN LENT
<b>Type</b>	motor yacht
<b>LOA (m)</b>	15,57
<b>Beam (m)</b>	4,30
<b>Draft (m)</b>	1,40
<b>Year built</b>	1965
<b>Builder</b>	Feadship Van Lent
<b>Country</b>	The Netherlands
<b>Displacement (t)</b>	22
<b>Hull material</b>	steel
<b>Hull colour</b>	white
<b>Hull shape</b>	deep-V
<b>Deck material</b>	steel
<b>Deck finish</b>	teak 2009/2010 1/2 inch teak (12.5 mm) on 1/2 inch marine ply
<b>Cockpit deck finish</b>	teak
<b>Window frame</b>	Chromium plated brass
<b>Window material</b>	glass
<b>Deckhatch</b>	yes
<b>Portholes</b>	stainless steel 14
<b>Mast can be lowered</b>	manual
<b>Fuel tank (litre)</b>	steel 1750
<b>Fuel tank 2 (litre)</b>	steel 350
<b>Freshwater tank (litre)</b>	steel 1000
<b>Level indicator (freshwater)</b>	yes
<b>Blackwater tank (litre)</b>	GRP 2X
<b>Greywater tank (litre)</b>	1 steel and 1 stainless steel
<b>More info on hull</b>	Around the rudders and on a few places the hull need to have extra attention and steel.
<b>Extra info</b>	Re varnish off the teak hand rails and deck margins.



## ACCOMMODATION

<b>Cabins</b>	2
<b>Berths</b>	4
<b>Interior</b>	teak
<b>Floor</b>	teak With carpet
<b>Aft deck</b>	yes
<b>Sliding roof</b>	manual
<b>Chart table</b>	Collapsible
<b>Aft Cabin</b>	yes
<b>Dinette to convert into berth</b>	+ saloon bench can be converted in to a double
<b>Opening door to cockpit</b>	yes
<b>Galley</b>	yes
<b>Countertop</b>	Original Primrose Formica
<b>Sink</b>	stainless steel
<b>Cooker</b>	electric
<b>Microwave/oven combi</b>	yes
<b>Fridge</b>	yes
<b>Water pressure system</b>	electrical
<b>Owners cabin</b>	double bed
<b>Wardrobe</b>	hanging
<b>Bathroom</b>	en suite
<b>Toilet</b>	en suite
<b>Toilet system</b>	electric
<b>Wash basin</b>	in the bathroom
<b>Shower</b>	en suite
<b>Guest cabin 1</b>	v-bed
<b>Bathroom</b>	en suite
<b>Toilet</b>	en suite
<b>Toilet system</b>	electric
<b>Wash basin</b>	in the bathroom
<b>Shower</b>	en suite



Extra info	yes
<b>MACHINERY</b>	
No of engines	2
Make	Mercedes
Type	OM352
HP	125
kW	92
Fuel	diesel
Engine hours	3000
Engine cooling system	freshwater heat exchanger
Drive	shaft
Engine controls	bowden cable
Gearbox	hydraulic
Bowthruster	electric
Propeller type	fixed
Shaft lubrication	grease
Electric bilge pump	1 Main electric bilge pump drawing from 7 different bilge points + 2 auto bilge pumps in engineroom
Generator	wet exhaust Whisper 8K
Start battery	180A 12V 2X
Service battery	200A 12V 4X
Generator battery	yes
Bowthruster battery	yes
Battery charger/inverter	Mastervolt Mass Combi 24 V/2Kw -60 hz
Extra info	Fuel system, fitted with Racor twin switchable primary fuel filt

## NAVIGATION

Compass	2X
Depth sounder	Echo sounder St 50 Tridata (not working)
Log	Raymarine Log St 60 Tridata



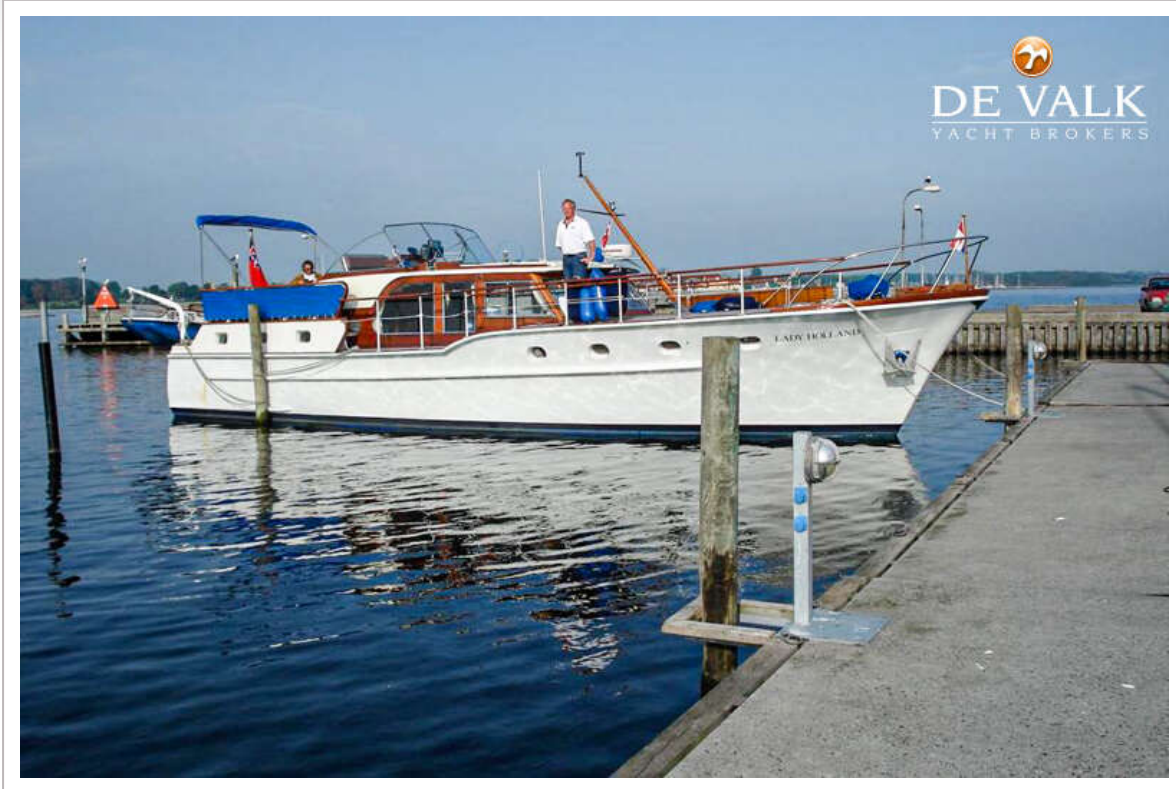
<b>Windset</b>	Wind instruments St 40
<b>VHF</b>	Icom Marine IC M 59
<b>Autopilot</b>	Original Pinta as fitted from new by Van Lent requires attention
<b>Radar/plotter</b>	yes
<b>Navigation lights</b>	yes

## EQUIPMENT

<b>Bimini</b>	yes
<b>Cockpit table</b>	Needs maintenance
<b>Boarding ladder</b>	wood 2, 1x stainless steel and 1x original timber ladder
<b>Anchor</b>	Danforth
<b>Anchor chain</b>	12mm chain 80m
<b>Windlass</b>	electrical Francis E900
<b>Dinghy</b>	rigid hull 11 ft & 25 HP
<b>Davits</b>	steel
<b>Sea railing</b>	stainless steel
<b>Railing side opening gates</b>	Both sides
<b>Clearview window</b>	Defect
<b>Horn</b>	yes
<b>Fenders</b>	yes
<b>Mooring lines</b>	yes
<b>Radio</b>	SSB



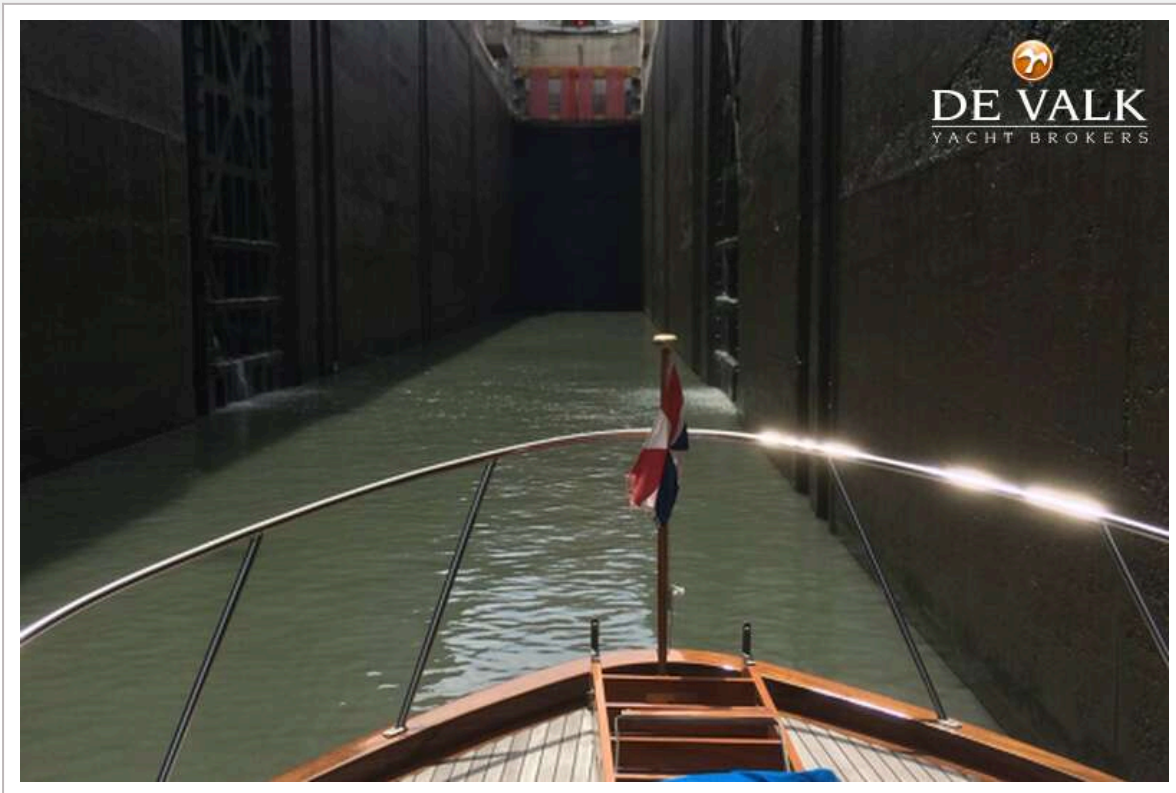








# FEADSHIP VAN LENT

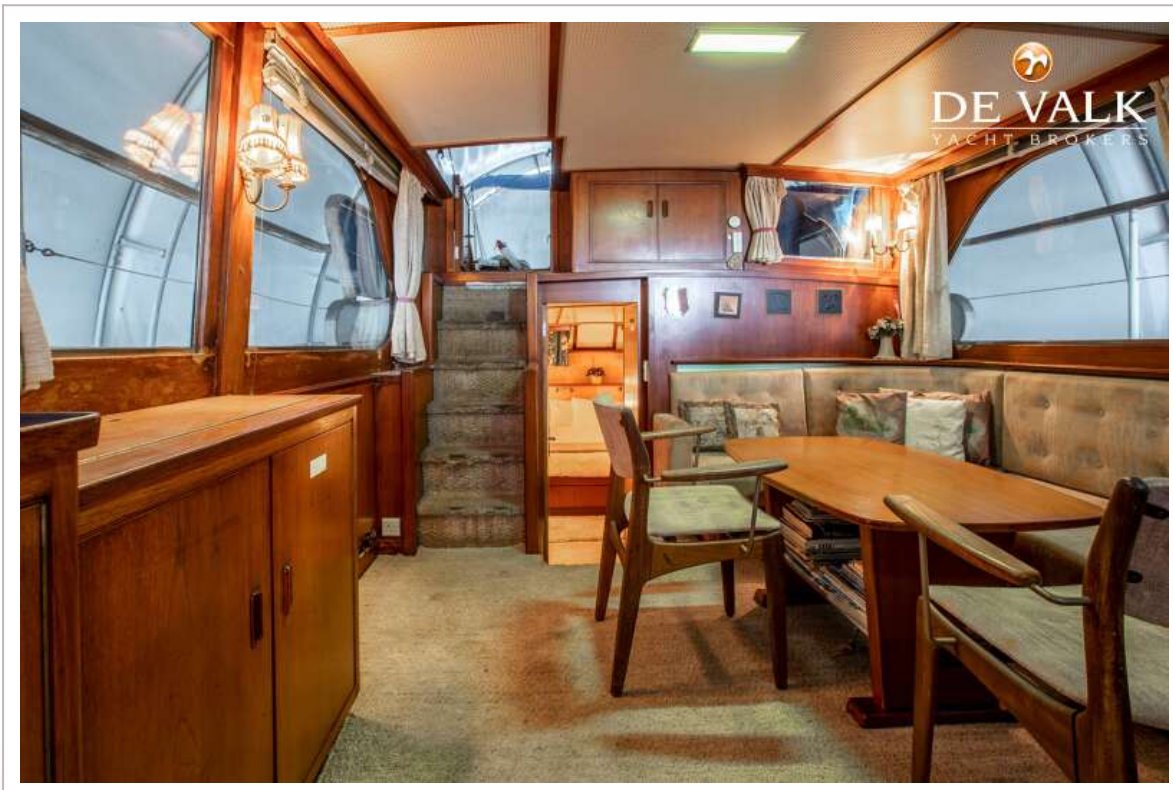
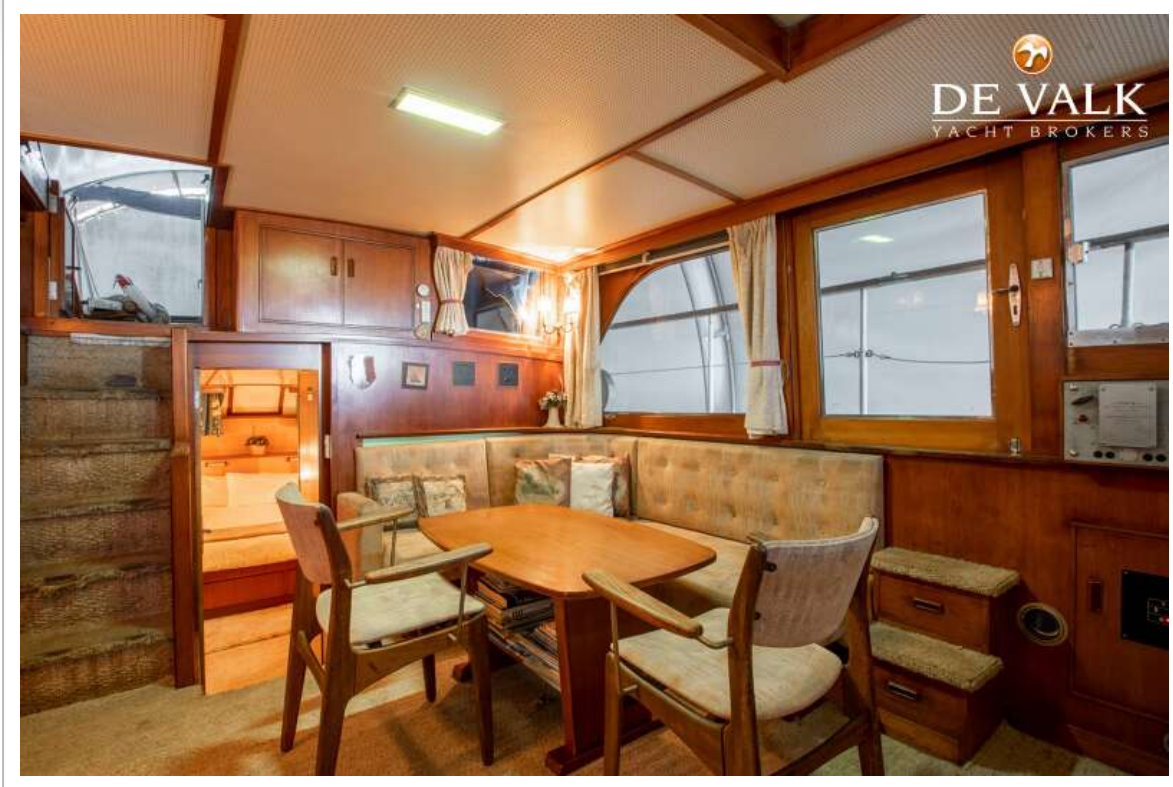








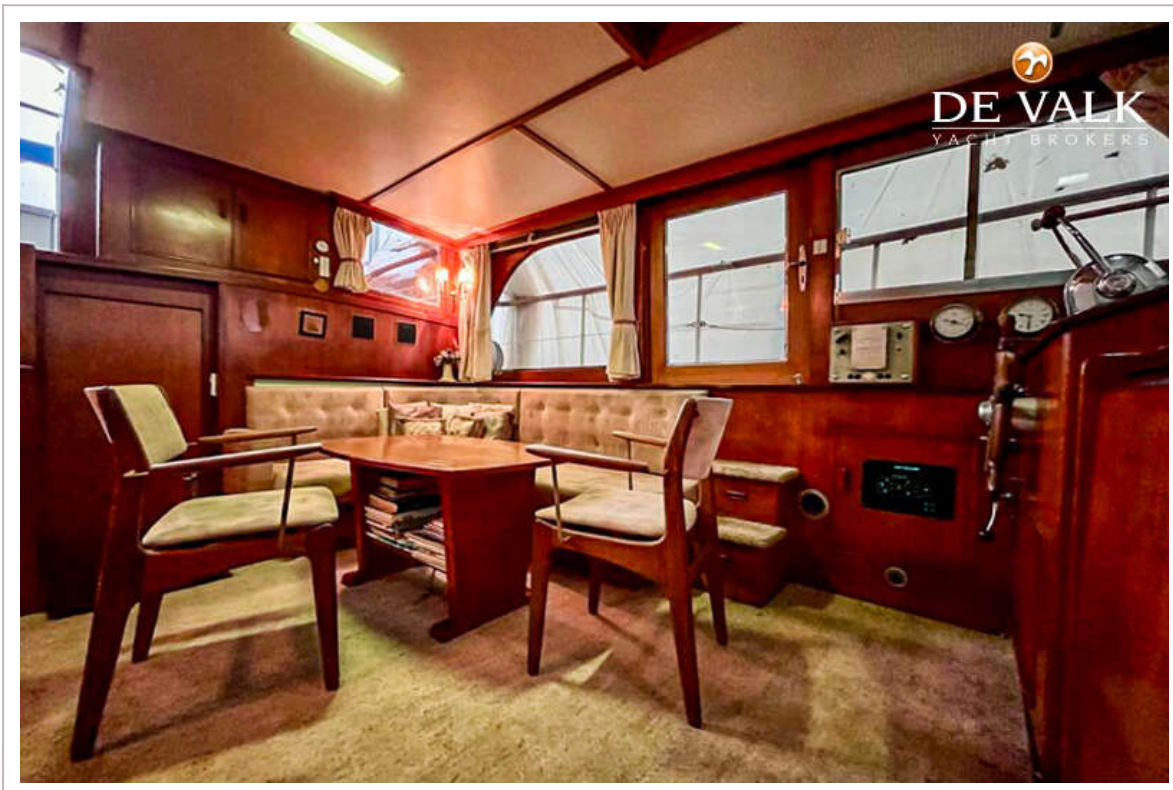
# FEADSHIP VAN LENT

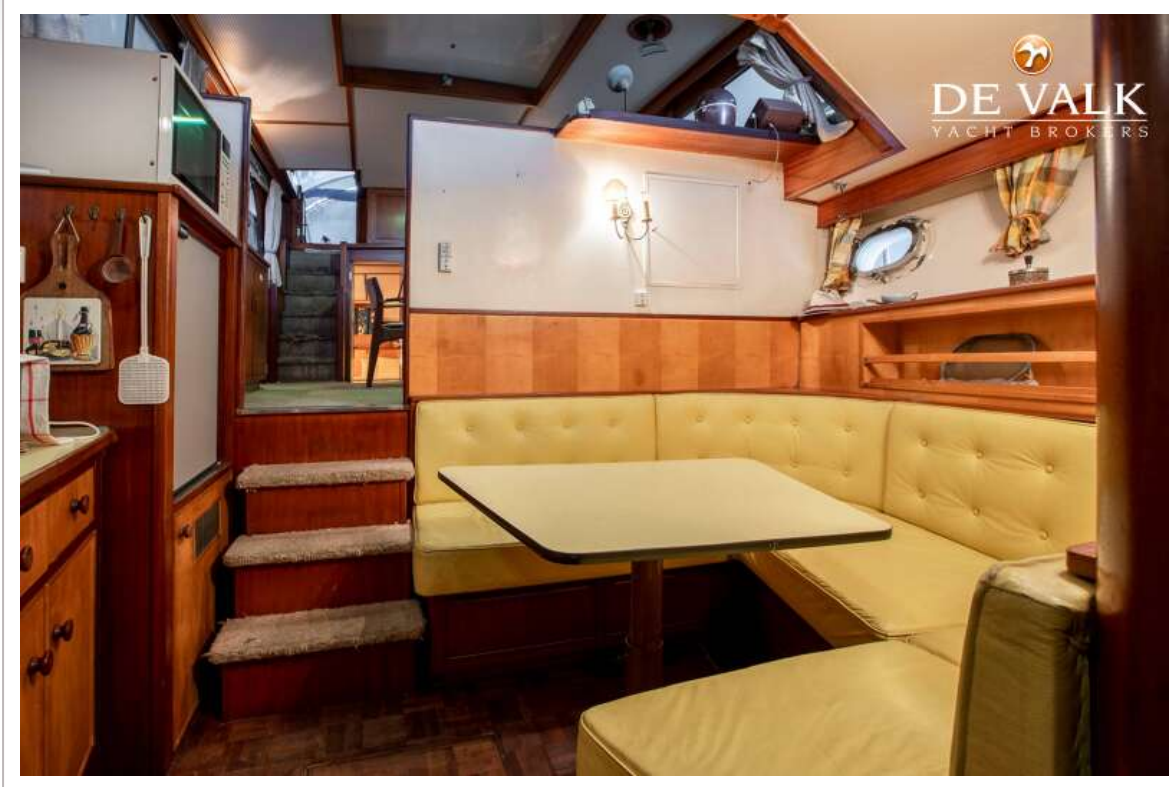


# FEADSHIP VAN LENT



# FEADSHIP VAN LENT

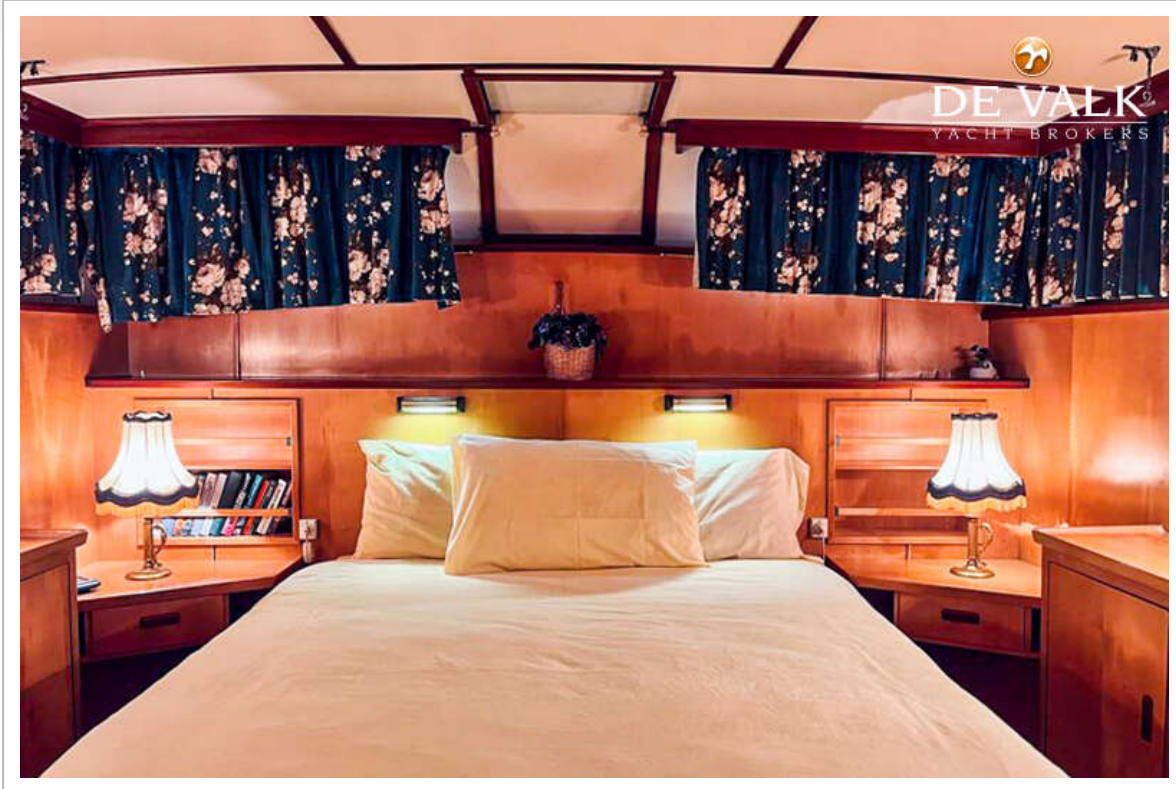


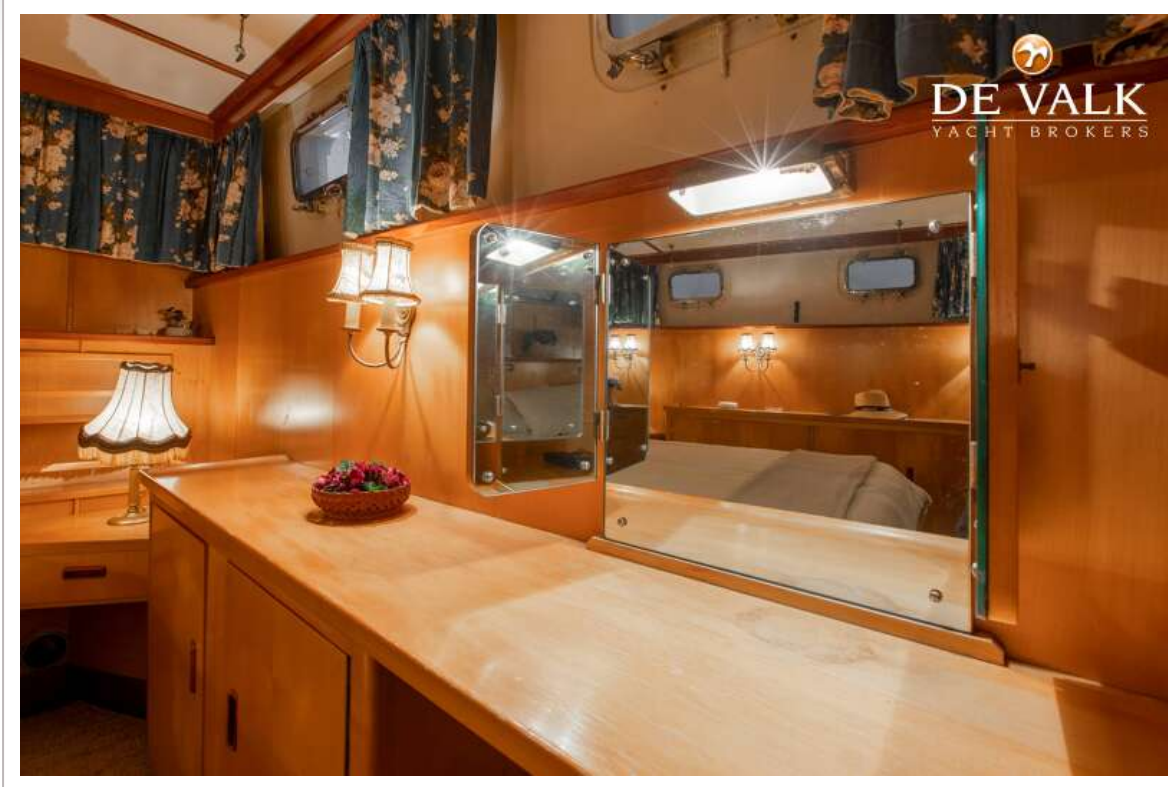


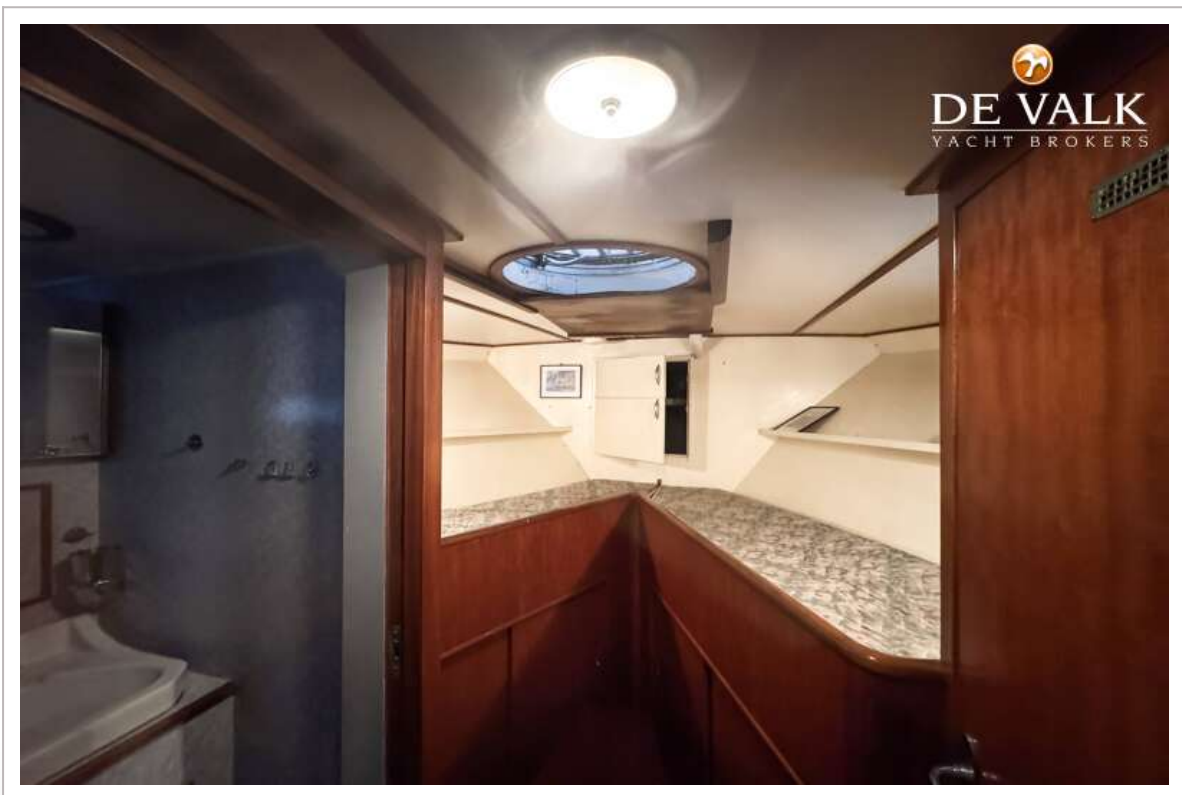
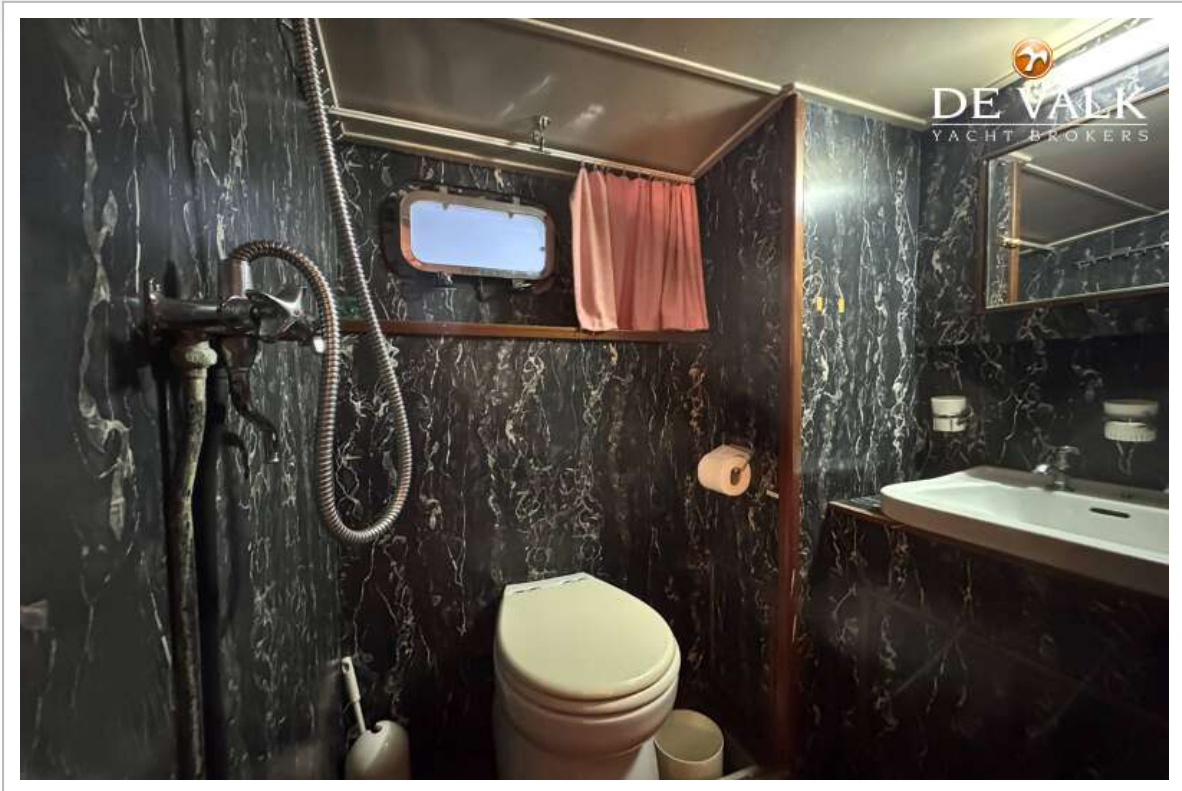
# FEADSHIP VAN LENT

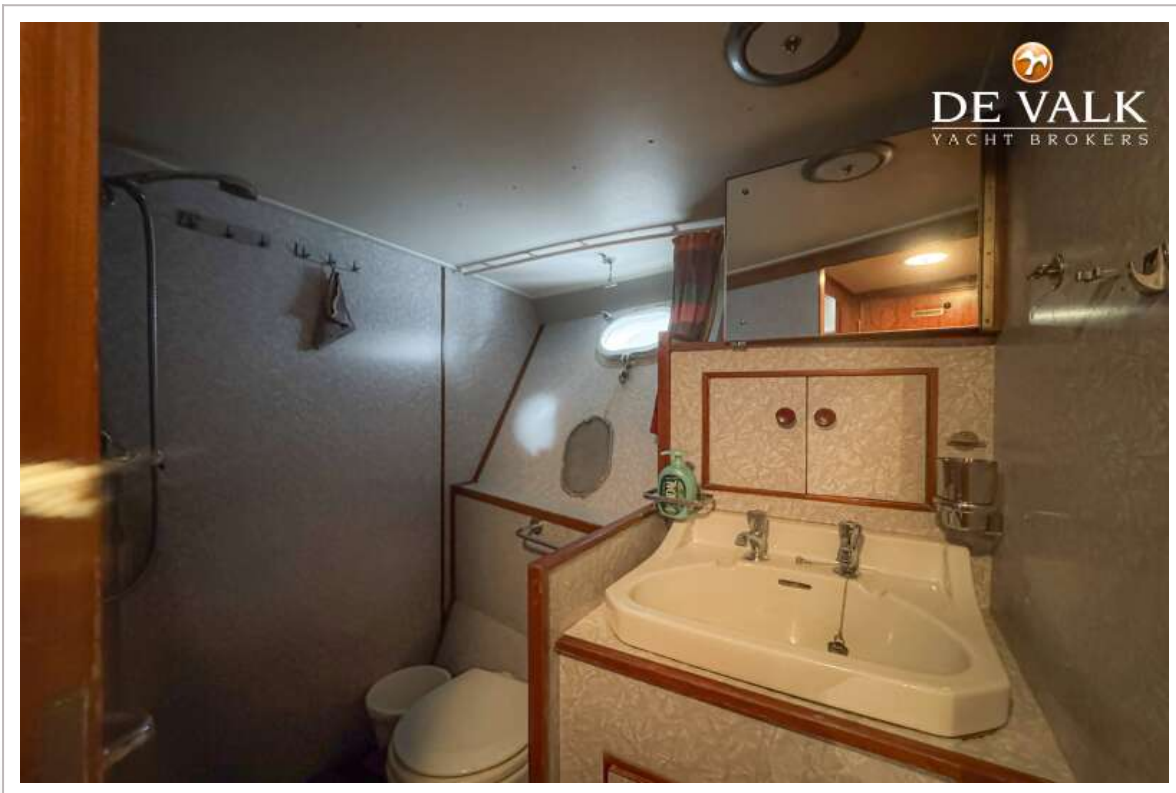


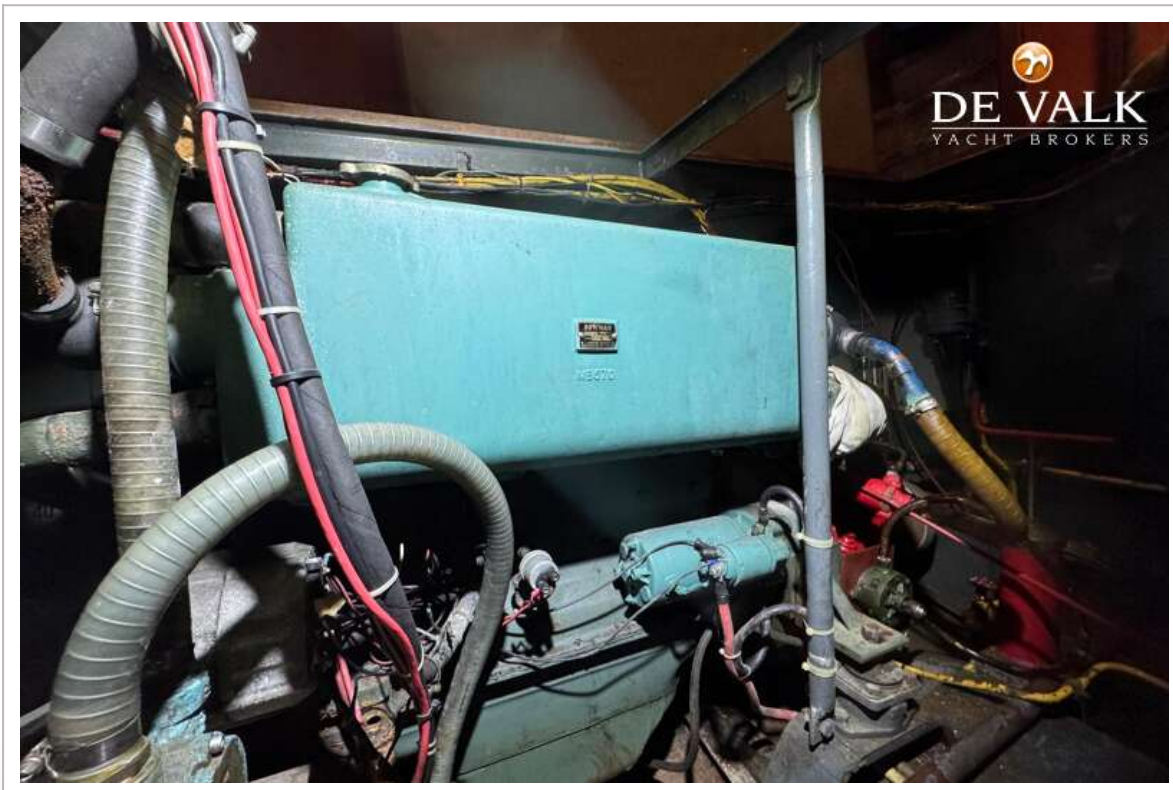
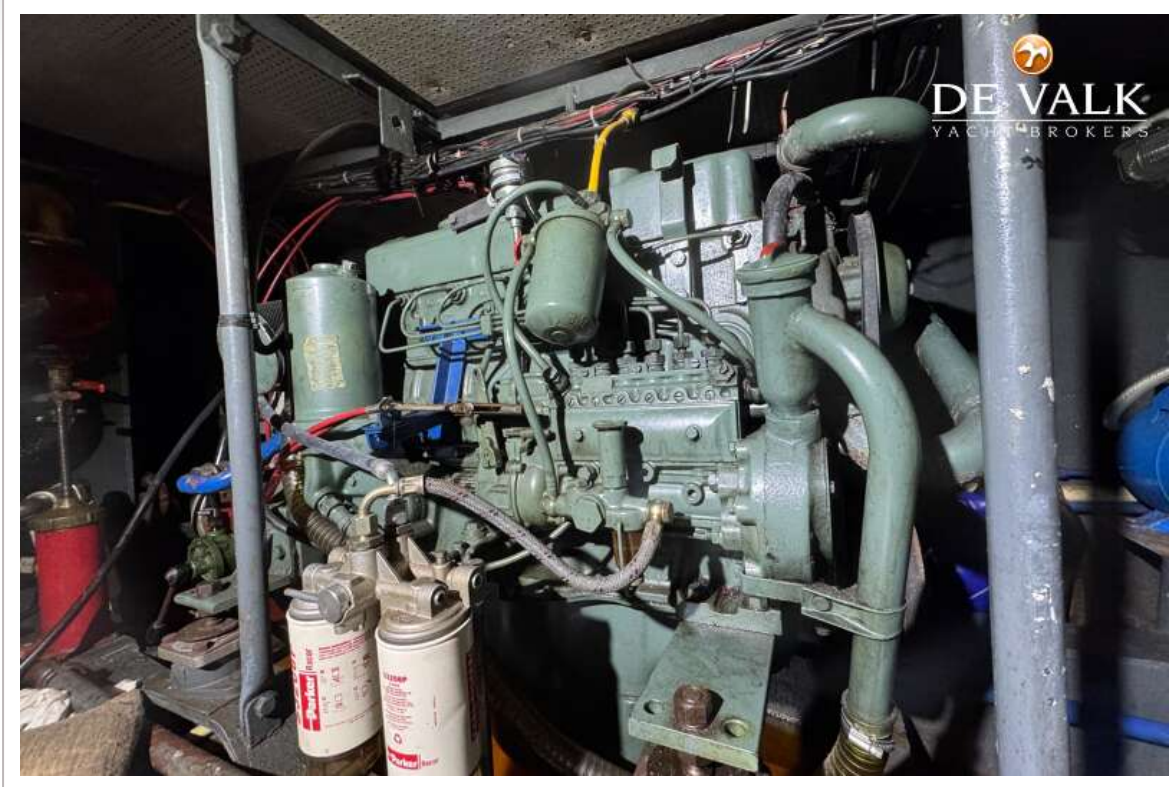
# FEADSHIP VAN LENT

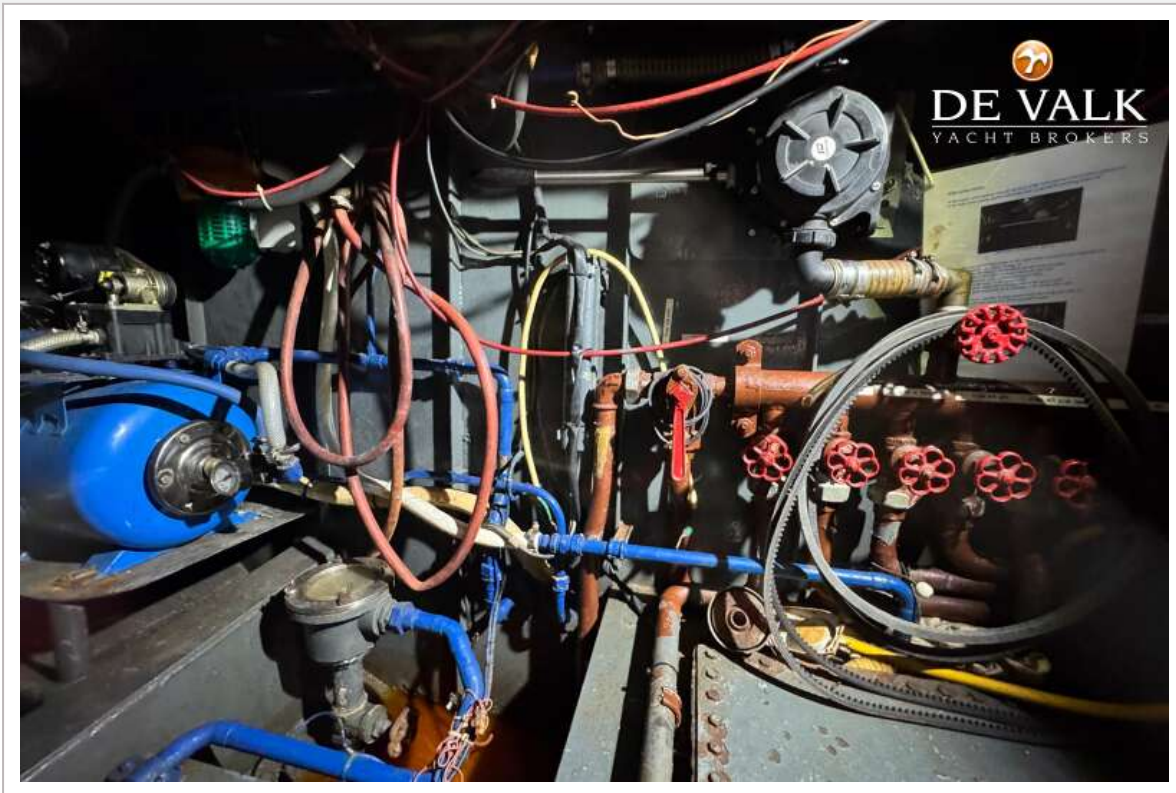


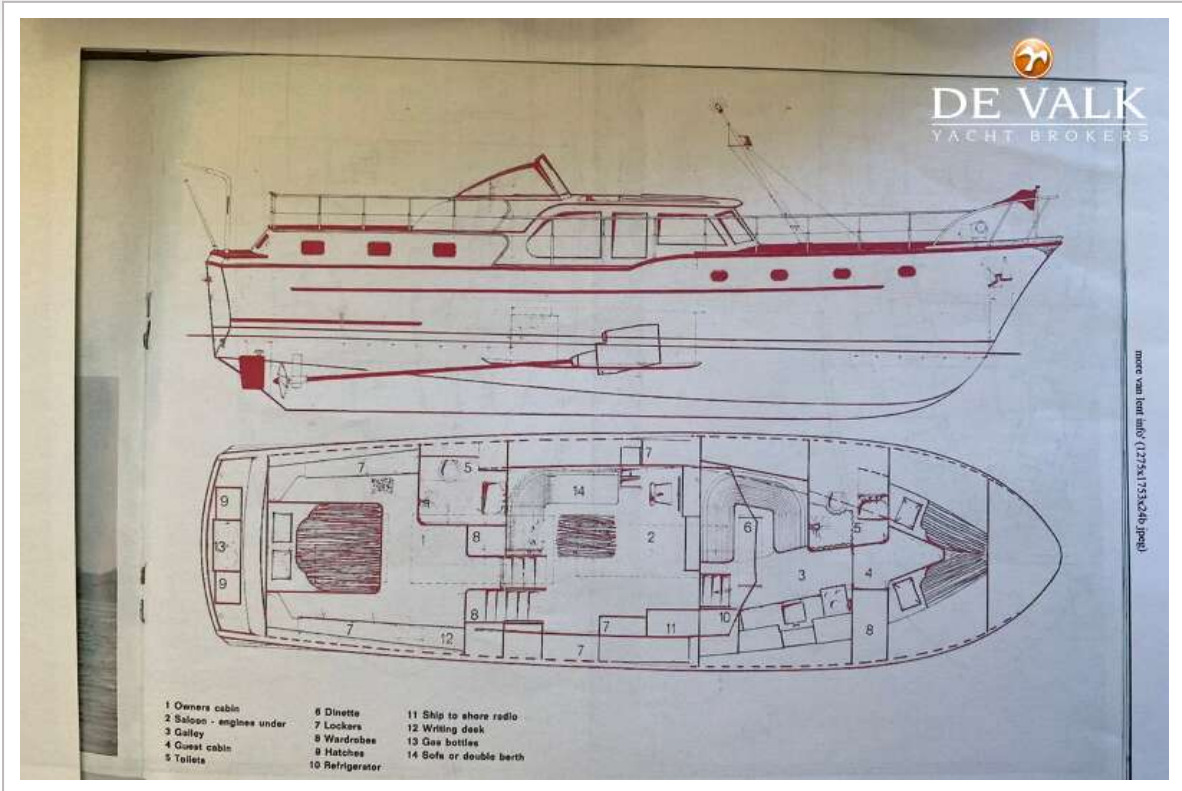












c. van lent & zonen 008 (1275x1753x24b.jpg)

## 51 ft. Raised deck type twin screw diesel Motor Yacht

Length O.A. 51' 1" - 15,57 m  
 Length W.L. 48' 4" - 14,52 m  
 Beam 14' 1" - 4,30 m  
 Draft 4' 1" - 1,26 m

Displacement approx. 20 tons

**Construction**  
 Hull and decks all-welded, Lloyds tested Siemens-Martin steel  
 Superstructure and deck covering of selected Burma teak; Interior of teak and best quality veneered marine ply. Colour schemes to owners choice

**Main engines**  
 Handled pair of DAF diesel engines type DS 575 M each developing 140 HP at 2300 RPM.  
 Hydraulic reverse/reduction gears. Other engines to owners choice

**Fuel capacity**  
 468 gallons (2100 liters)

**Water capacity**  
 225 gallons (1000 liters)

**Standard equipment**  
 Ship to shore radio, direction finder, automatic pilot, electric anchor winch, echo sounder, central heating, diesel generator and many other special features

