



TJALK MOTORSHIP 15 M

TJALK MOTORSHIP 15 M

BROKER'S COMMENTS

This spacious motortjalk features a bright salon with a cabin in the bow and stern, both of which are equipped with a private bathroom for optimal comfort and privacy on board. In 1997 the Tjalk was converted into a motor vessel and given its current shape. This spring the hull was painted both above and below water and the bow thruster was renewed. You are cordially invited to view this Tjalk in our sales marina.

Bas Lohmann

SPECIFICATIONS

Dimensions	14.69 x 3.38 x 0.70 (m)	Builder	
Built	1903	Cabins	2
Material	Steel	Berths	6
Engine(s)	1 x Mercedes 5 cilinder diesel	Hp/Kw	60.00 (hp), 44.16 (kw)
Asking price	sold (VAT)	Lying	contact Loosdrecht

CONTACT

Sales office	De Valk Loosdrecht B.V.	Telephone	+31 (0)35 582 90 30
Address	't Breukeleveense Meentje 6 1231LM Loosdrecht / Wijdmeren NL	E-mail	loosdrecht@devalk.nl

DISCLAIMER

These particulars are given in good faith as supplied but cannot be guaranteed.



TJALK MOTORSHIP 15 M

GENERAL

Model	TJALK MOTORSHIP 15 M
Type	motor yacht
LOA (m)	14,69
Beam (m)	3,38
Draft (m)	0,70
Air draft min (m)	2,50
Year built	1903
Hull material	steel
Hull colour	red
Hull shape	flat bottom
Superstructure material	steel
Rubbing strake	steel
Deck material	steel
Deck finish	non-skid paint
Superstructure deck finish	paint
Cockpit deck finish	synthetic teak
Antifouling (year)	2023
Window frame	aluminium
Window material	glass
Flybridge	yes
Flybridge suncover	Telescopic frame
Fuel tank (litre)	stainless steel 500
Level indicator (fuel tank)	yes
Freshwater tank (litre)	stainless steel 400
Level indicator (freshwater)	yes
Blackwater tank (litre)	polyethylene
Level indicator (blackwater)	yes
Wheel steering	hydraulic
Inside helm position	yes
Outside helm position	hydraulic



More info on paintwork

Hull done in 2023

Extra info

The hull and superstructure are rebuilt in 1997

Extra info

yes

ACCOMMODATION

Cabins

2

Berths

6

Interior

mahogany

Layout

yes

Floor

carpet

Aft deck

yes

Pilot house/deck saloon

yes

Heating

calorgas ducted hot air

Sliding door to cockpit

Port side & starboard

Opening door to cockpit

yes

Opening door to aft deck

yes

Galley

yes

Countertop

plastic

Sink

stainless steel

Cooker

calor gas

Fridge

2x Dometic 12V + calor Gas

Freezer

In fridge

Hot water system

geyser on Calor Gas

Water pressure system

electrical

Owners cabin

double bed + 2 bunk beds

Wardrobe

drawers and shelves

Bathroom

separate

Toilet

separate

Toilet system

manual

Wash basin

in the bathroom

Shower

separate



Guest cabin 1	double bed
Wardrobe	hanging and drawers
Bathroom	en suite
Toilet	en suite
Toilet system	manual
Wash basin	in the cabin
Shower	en suite

MACHINERY

No of engines	1
Make	Mercedes
Type	5 cilinder
HP	60
kW	44.16
Fuel	diesel
Year of overhaul	1997
Engine cooling system	freshwater heat exchanger
Drive	shaft
Shaft seal	yes
Engine controls	bowden cable
Gearbox	hydraulic
Bowthruster	electric 2023
Gearbox	hydraulic
Exhaust	watercooled
Propeller type	fixed
Propeller blades	4
Propeller shaft material	stainless steel
Shaft lubrication	grease
Electric bilge pump	yes
Electrical installation	12/24V & 230V
Generator	dry exhaust Genemore 5KW



Running hours generator	100
Batteries	yes
Start battery	Sportline AGM 12V/95Ah
Service battery	yes
Battery charger	Batium 12v/18-Ah
Inverter	Portable 150Watt
Shorepower	with cable

NAVIGATION

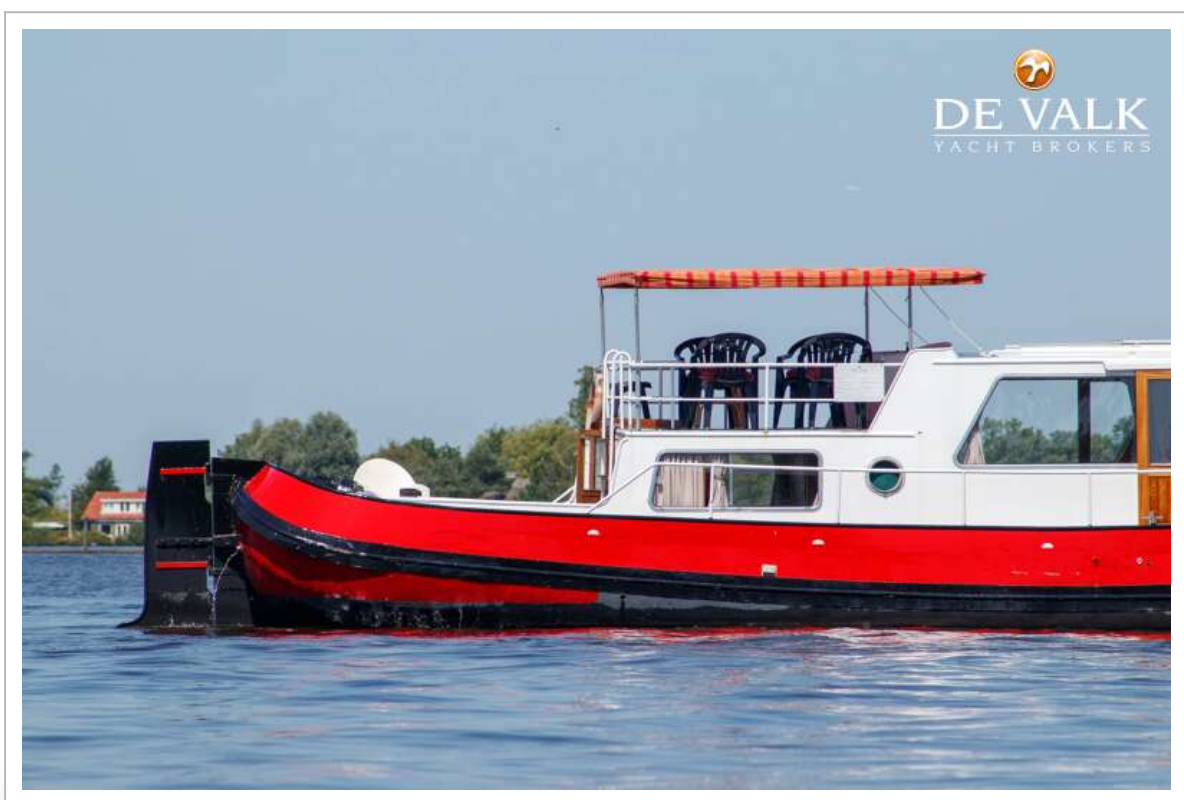
Compass	yes
Navigation lights	yes

EQUIPMENT

Sun awning	yes
Cockpit cushions	yes
Cockpit table	yes
Cockpit chairs	yes
Anchor	yes
Sea railing	steel
Grab rail (superstructure)	steel
Railing side opening gates	yes
Wiper	Vetus electric
Horn	electric
Fenders	yes
Mooring lines	yes
Radio	yes
Speakers in salon	yes



TJALK MOTORSHIP 15 M



TJALK MOTORSHIP 15 M



TJALK MOTORSHIP 15 M



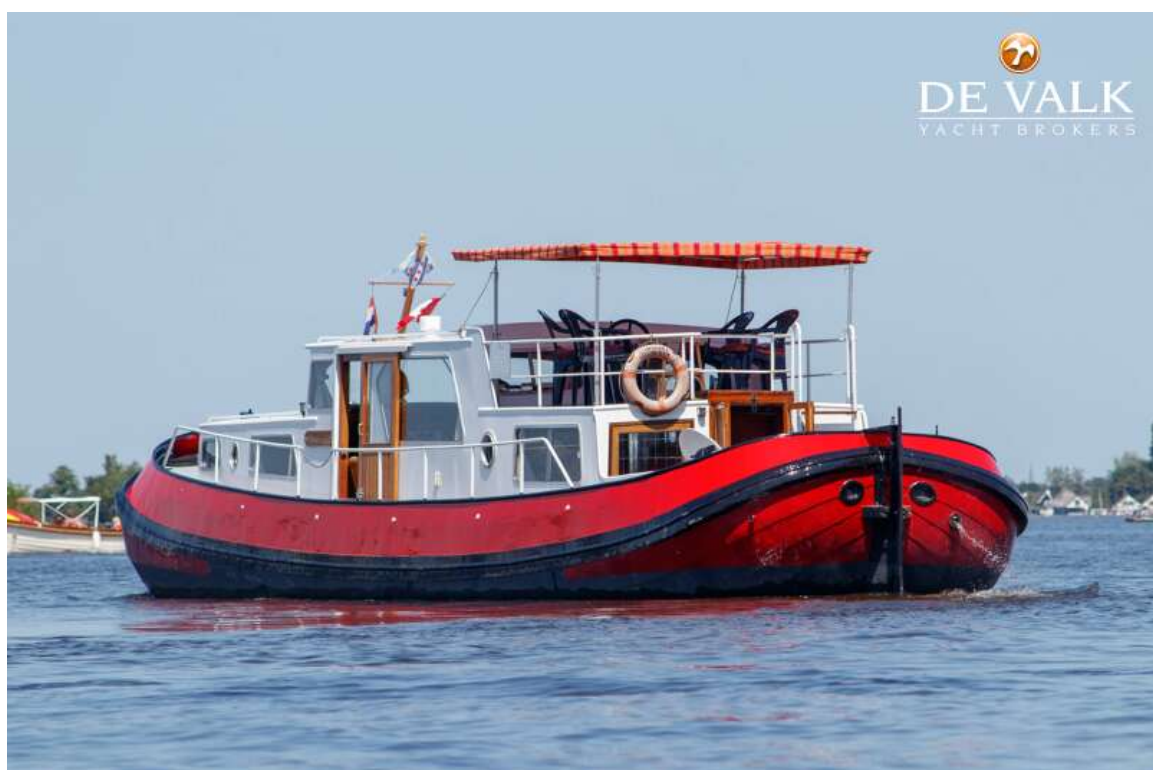
TJALK MOTORSHIP 15 M



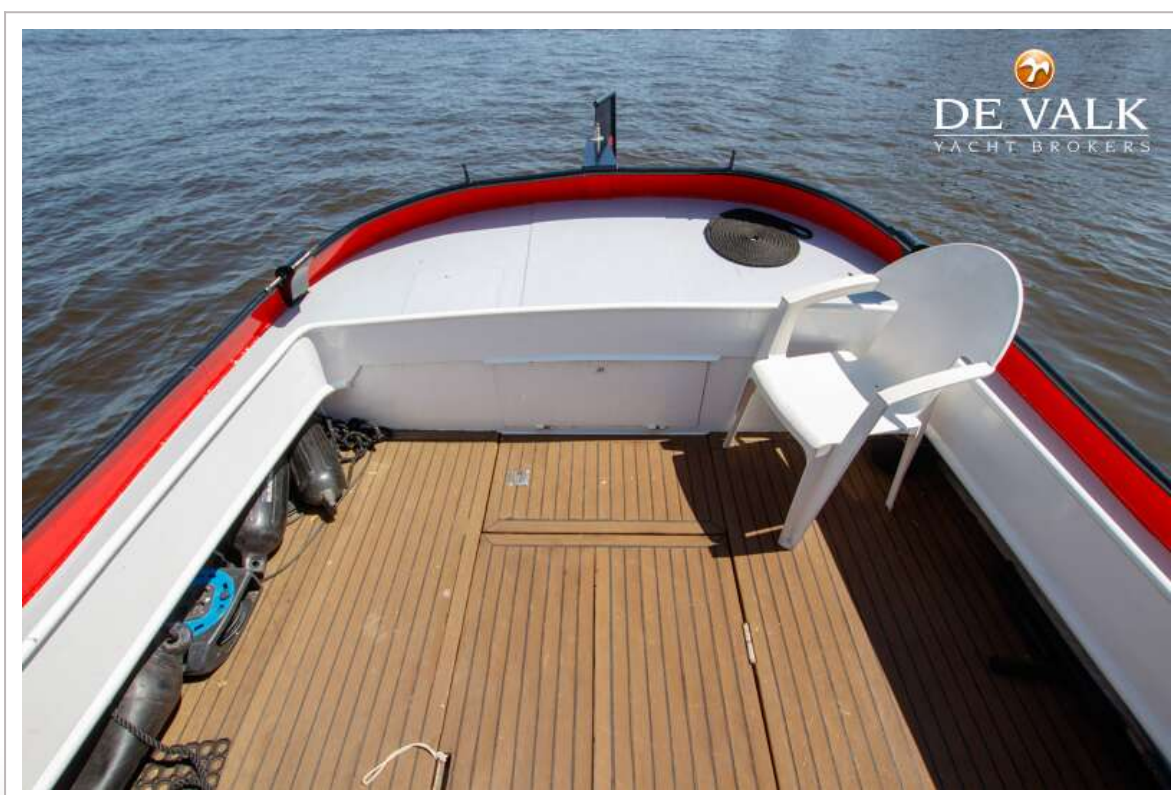
TJALK MOTORSHIP 15 M



TJALK MOTORSHIP 15 M



TJALK MOTORSHIP 15 M



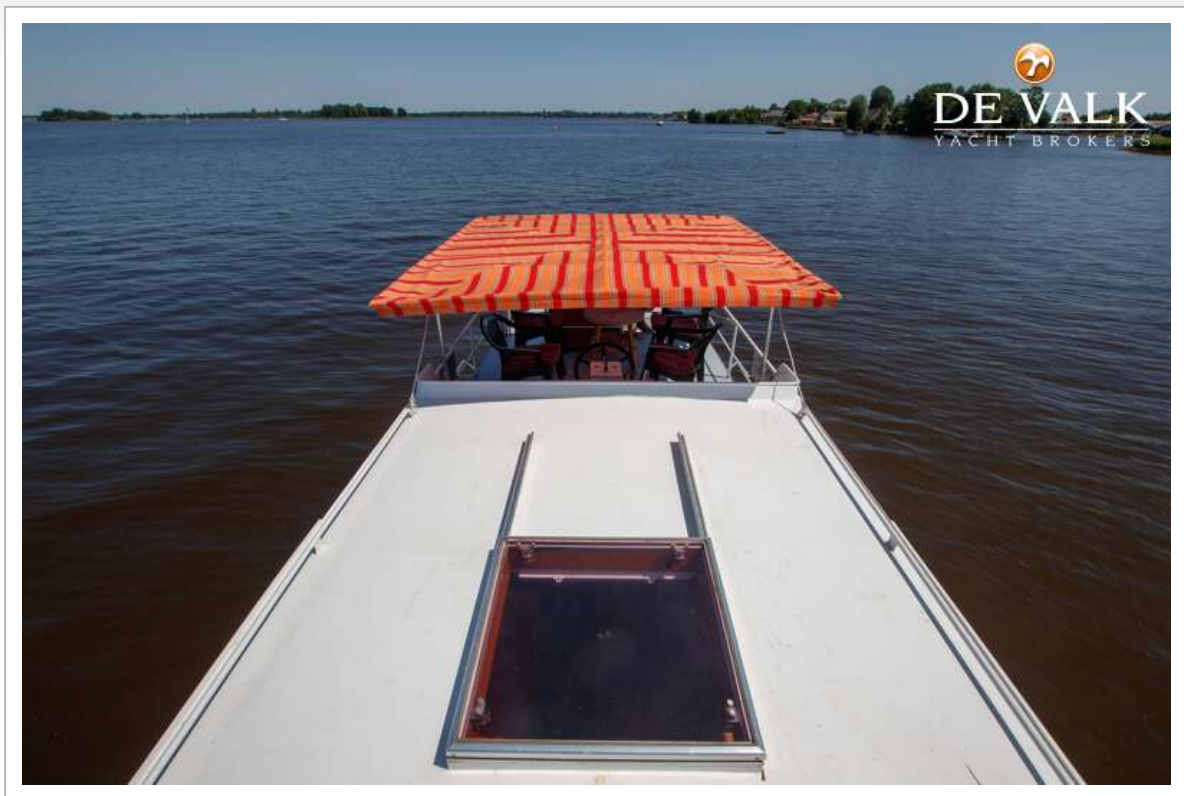
TJALK MOTORSHIP 15 M



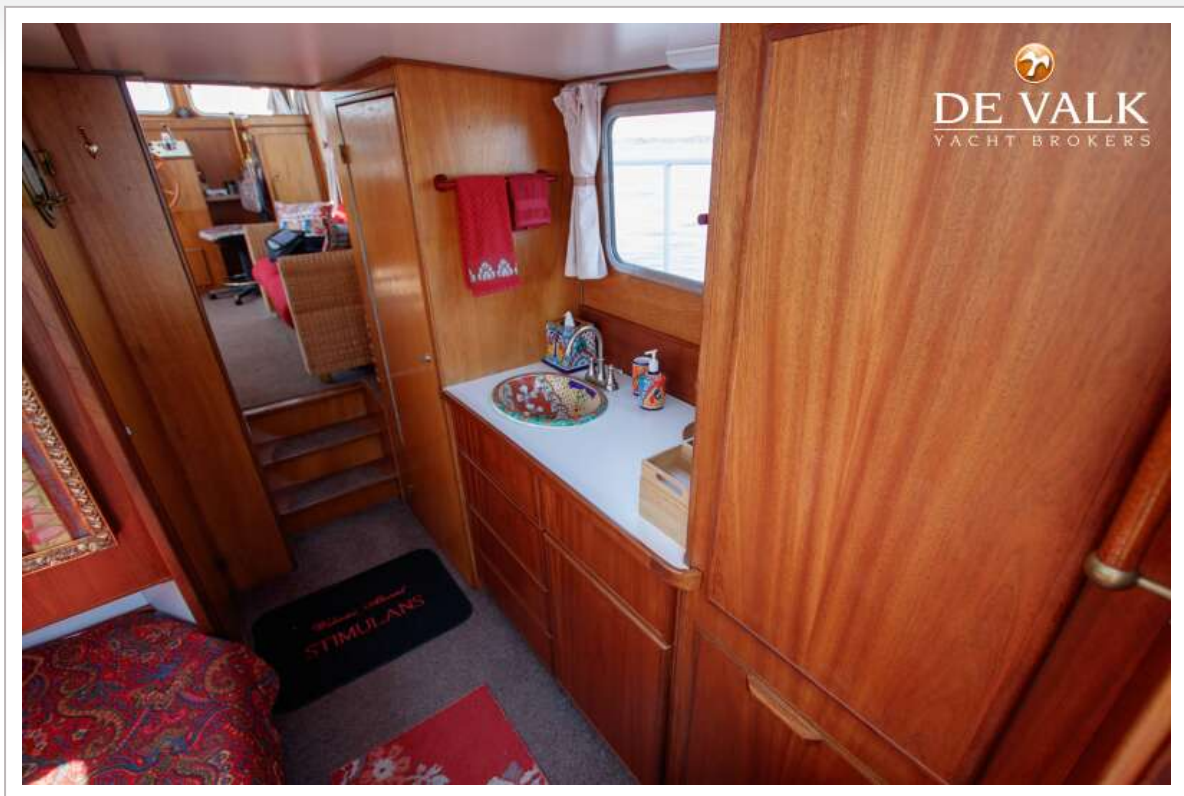
TJALK MOTORSHIP 15 M



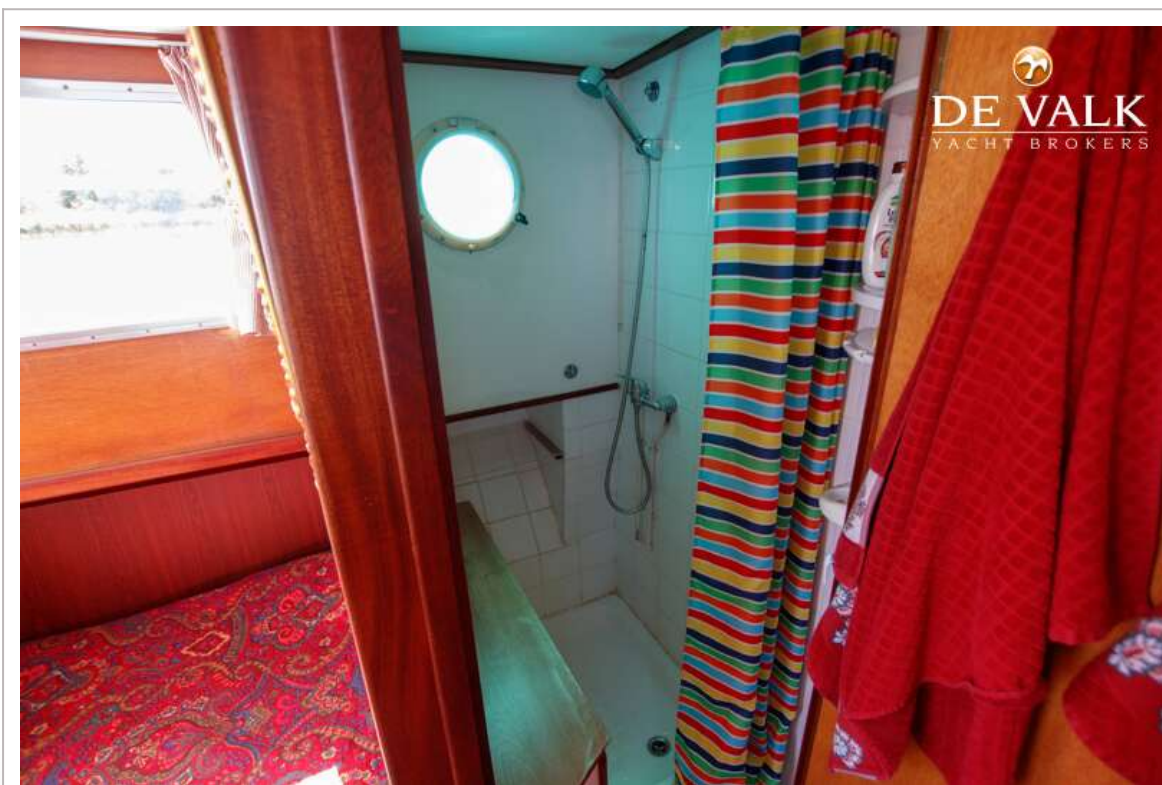
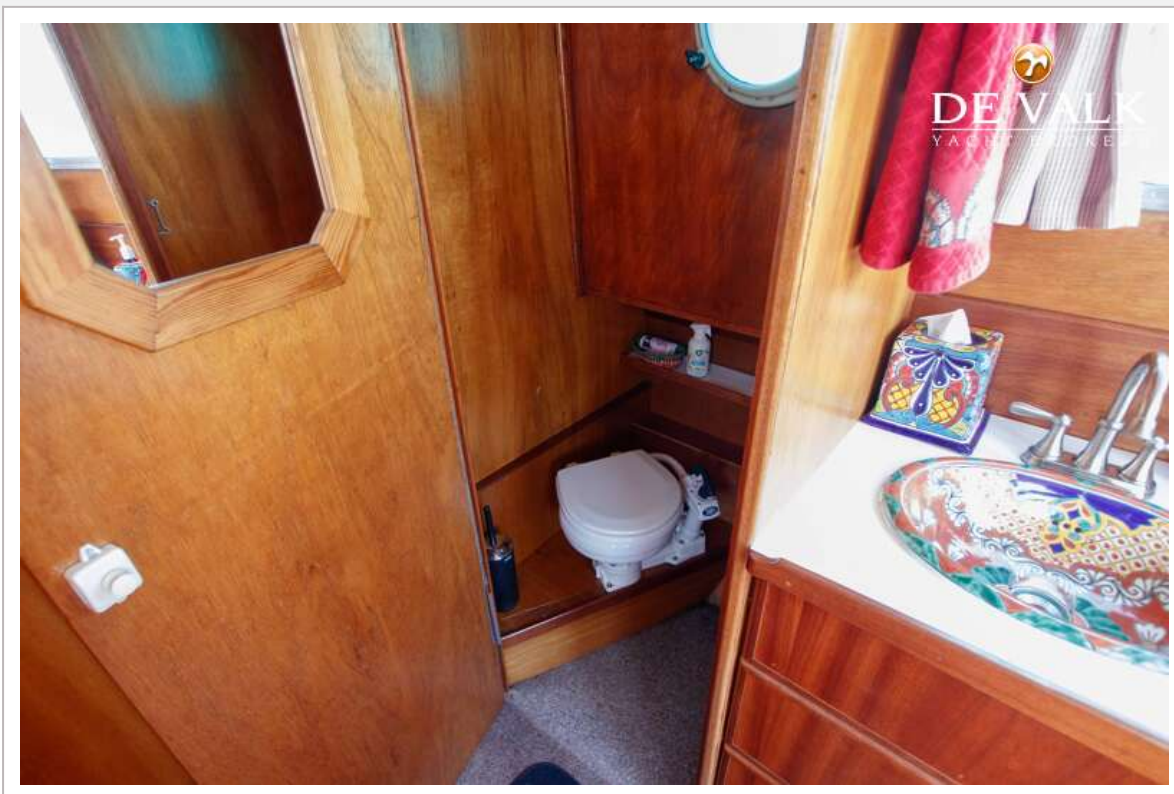
TJALK MOTORSHIP 15 M



TJALK MOTORSHIP 15 M



TJALK MOTORSHIP 15 M



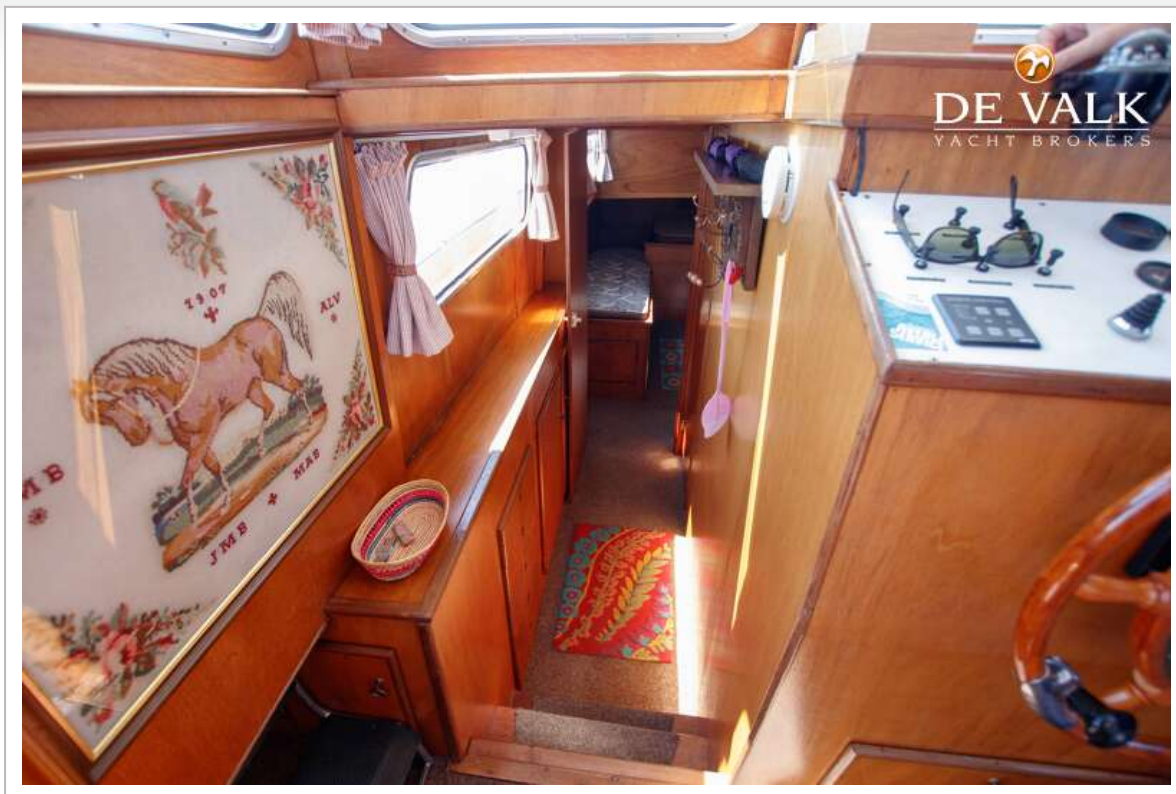
TJALK MOTORSHIP 15 M



TJALK MOTORSHIP 15 M



TJALK MOTORSHIP 15 M



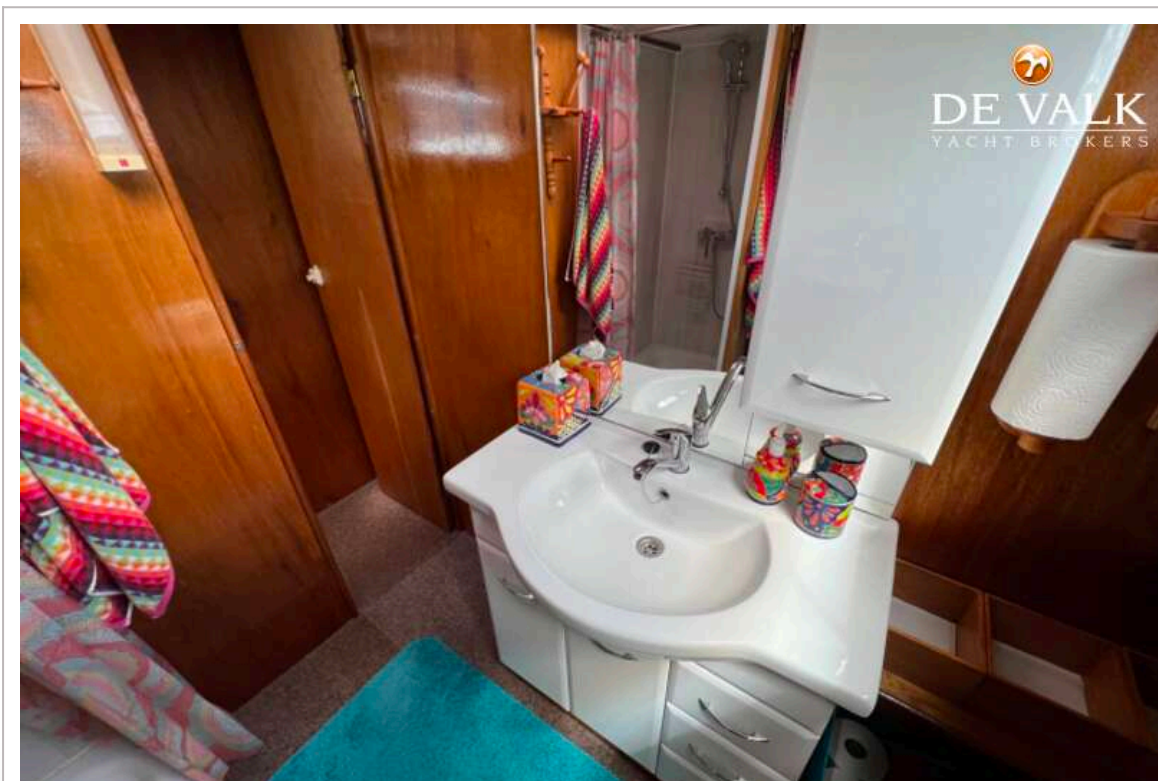
TJALK MOTORSHIP 15 M



TJALK MOTORSHIP 15 M



TJALK MOTORSHIP 15 M



TJALK MOTORSHIP 15 M



TJALK MOTORSHIP 15 M

