



SEALINE T60

BROKER'S COMMENTS

Priced to sell! AMOR C was built with advanced manufacturing structures by Sealine in the UK, bridging the charm of British maritime heritage. This T60 has a surprisingly spacious layout with a large, two-level salon with an open galley, 3 large cabins and 3 bathrooms. Further, this version is the only one with a crew cabin. The accommodation and many installations have recently been upgraded / refitted, and the machinery is well maintained. A comfortable, elegant and safe yacht.

Tue Simon Fasting

SPECIFICATIONS

Dimensions	17.70 x 4.84 x 1.57 (m)	Builder	Sealine
Built	2005	Cabins	3
Material	GRP	Berths	7
Engine(s)	2 x Caterpillar 3406E diesel	Hp/Kw	2 x 811.00 (hp), 596.90 (kw)
Asking price	€ 479.500 (VAT Paid)	Lying	contact sales office

CONTACT

Sales office	De Valk Barcelona	Telephone	+34 932 202 825
Address	Barcelona region 08392 Barcelona ES	E-mail	barcelona@devalk.nl

DISCLAIMER

These particulars are given in good faith as supplied but cannot be guaranteed.



GENERAL

Model	SEALINE T60
Type	motor yacht
LOA (m)	17,70
Beam (m)	4,84
Draft (m)	1,57
Year built	2005
Launched	2006
Builder	Sealine
Country	United Kingdom
Displacement (t)	38,79
Hull material	GRP
Hull colour	off-white
Hull shape	Fast Displacement Hull
Superstructure material	GRP
Deck material	GRP
Deck finish	Flexi teak 2019
Antifouling (year)	+ anodes - 2024
Window frame	stainless steel
Window material	New sikaflex on bridge windows 2020
Portholes	stainless steel
Flybridge	yes
Flybridge cover	NEW
Flybridge suncover	NEW
Radar arch	yes
Fuel tank (litre)	3140
Freshwater tank (litre)	500
Level indicator (freshwater)	yes
Blackwater tank (litre)	yes
Level indicator (blackwater)	yes
Blackwater tank extraction	pump



Greywater tank (litre)	New, with direct discharge
Wheel steering	electric
Inside helm position	yes
Flybridge helm position	yes
More info on hull	Reinforced rudder shaft fittings on hull in 2020.
Extra info	Fuel tanks washed 2021
Extra info	Rope cutters on shaft

ACCOMMODATION

Cabins	3
Berths	7
Crew cabin	1 - as new
Crew berths	1
Floor	carpet New 2022, with Duralay under carpet
Aft deck	yes
Air-conditioning	reverse cycle airco 3 new BTU 36000 compressors. 5 new air handlers (2020)
Navigation center	yes
Sliding door to aft deck	yes
Galley	NEW floor
Sink	stainless steel
Cooker	electric Energy efficient
Extractor	New built-in fan system
Microwave/oven combi	yes
Fridge	2x new Liebherr plus fridge on fly
Freezer	Liebherr, with ice cube system
Wine cooler	On fly
Hot water system	yes
Water pressure system	electrical
Crockery	yes
Owners cabin	With fridge for drinks + safe



SEALINE T60

Wardrobe	walk-in closet
Bathroom	en suite
Toilet system	electric
Shower	en suite
Guest cabin 1	double bed
Wardrobe	hanging/drawers/shelves
Bathroom	en suite
Toilet system	electric
Shower	en suite
Guest cabin 2	Twin single + one foldable
Wardrobe	hanging/drawers/shelves
Bathroom	In hallway - shared as day head as well
Toilet system	electric
Shower	yes
Crew cabin(s)	1 with separate 8000 BTU A/C system
Toilet (crew)	1
Toilet system	electric
Shower (crew)	1
Washing machine/dryer combi	NEW LG high speed silent
Flybridge	yes
Wet bar	yes
Extra info	Electric grill on fly

MACHINERY

No of engines	2
Make	Caterpillar
Type	3406E
HP	811
kW	596.90
Fuel	diesel
Year installed	2005



Maximum speed (kn)	30
Engine hours	1090
Engine cooling system	freshwater heat exchanger
Drive	V-drive
Engine controls	electrical
Bowthruster	New 2021, with joystick control
Sternthruster	Joystick control
Exhaust	watercooled
Propeller type	Propellers rebalanced 2022
Electric bilge pump	6
Bilge alarm	yes
Generator	Paguro - NEW 2022, 9000 KW
Batteries	8x domestic batteries, new, 2022
Start battery	4x new for the engines and 1 new for the generator 2024
Generator battery	New 2024
Bowthruster battery	2x new
Sternthruster battery	2x new
Battery monitor	yes
Battery charger/inverter	2x 3000 kW with remote control
Shorepower	yes
Trimtabs	With digital display controls

NAVIGATION

Compass	Raymarine
Depth sounder	Raymarine
Depth sounder/log	Raymarine
Windset	Clipper
Repeater	Raymarine repeaters on fly
VHF	Raymarine
VHF handheld	yes
Autopilot	Raymarine



Radar/GPS/plotter	Raymarine
Wifi antenna	Yes
AIS receiver	8400 Class B
EPIRB	Yes
Navigation lights	yes
Searchlight	yes
Extra info	Remote control for the vessel Hydronautica

EQUIPMENT

Bimini	New
Window cover	Fly cockpit
Cockpit cushions	New
Bathing platform	Yes
Gangway	1 hydraulic and one portable
Deck shower	Yes
Anchor	Delta
Windlass	electrical
Windlass aft	electrical
Dinghy	rigid inflatable New
Grab rail (superstructure)	stainless steel Newly installed on the main deck, very solid and well designed.
Life raft	yes
Lifejackets	Yes
Horn	yes
Binocular	yes
Fenders	New
Tools	Yes
TV	Smart TV
TV receiver	yes
Radio-cd player	yes
Speakers in salon	New



Speakers in cabin	New
Clock - barometer	yes
Extinguisher in engine room	yes
Auto extinguisher system	Engine room
Extra info	Solid grap rails installed in the saloon ceiling



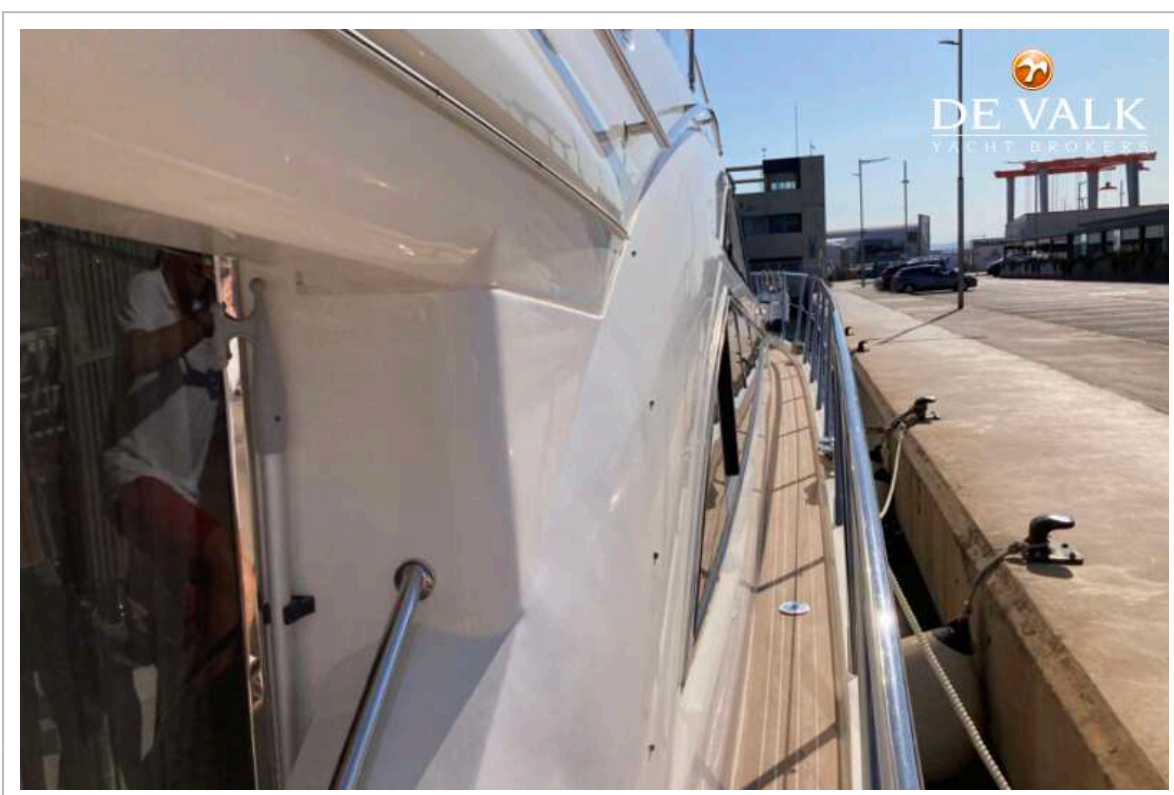
SEALINE T60



SEALINE T60



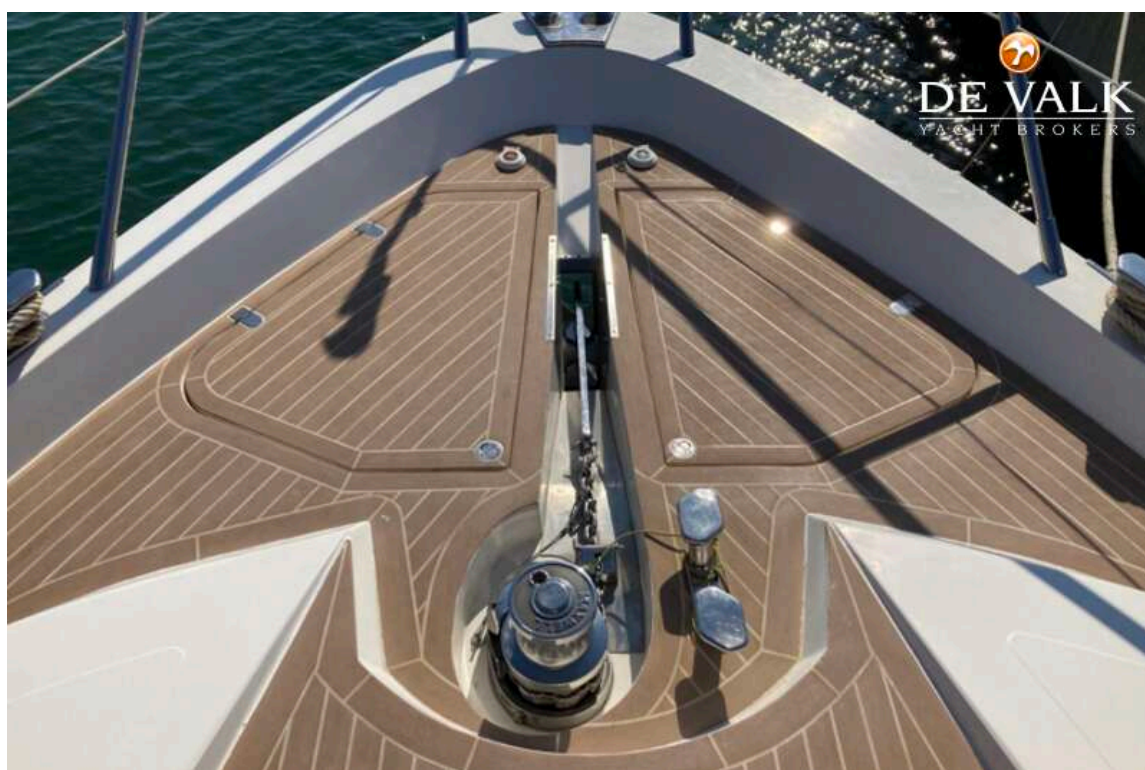
SEALINE T60



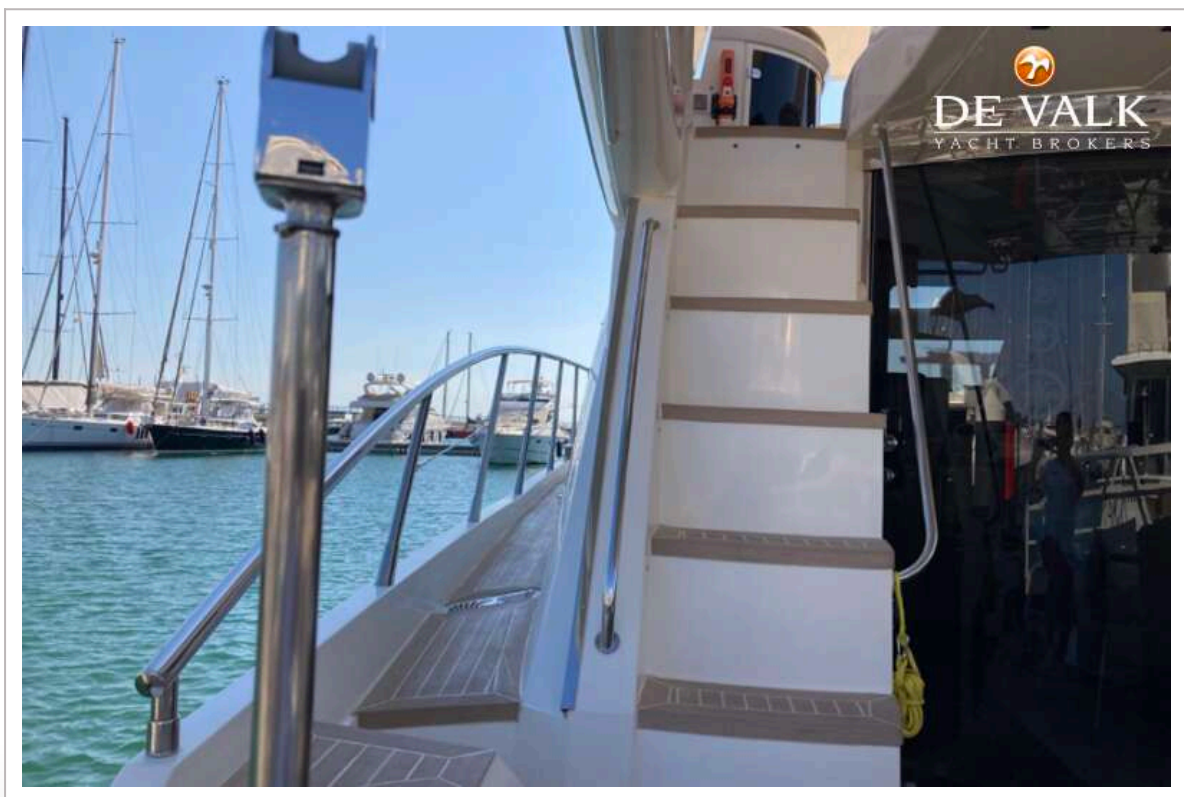
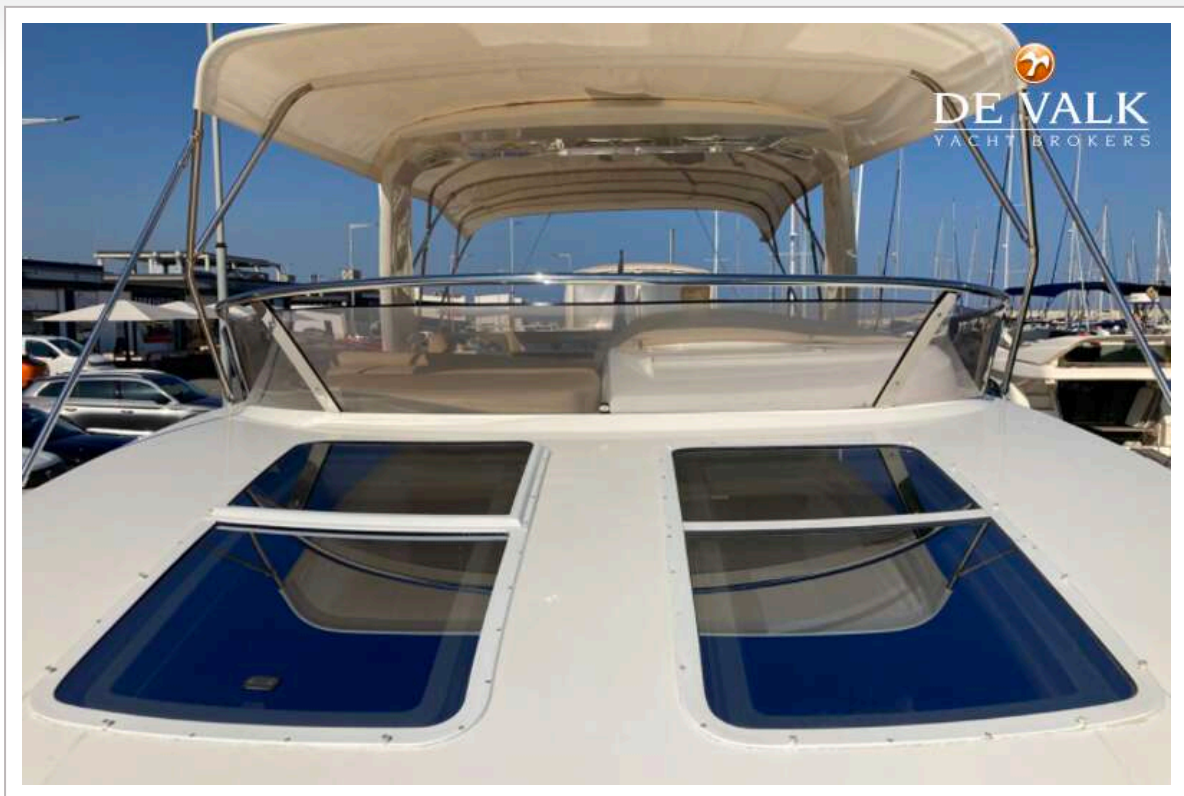
SEALINE T60



SEALINE T60



SEALINE T60



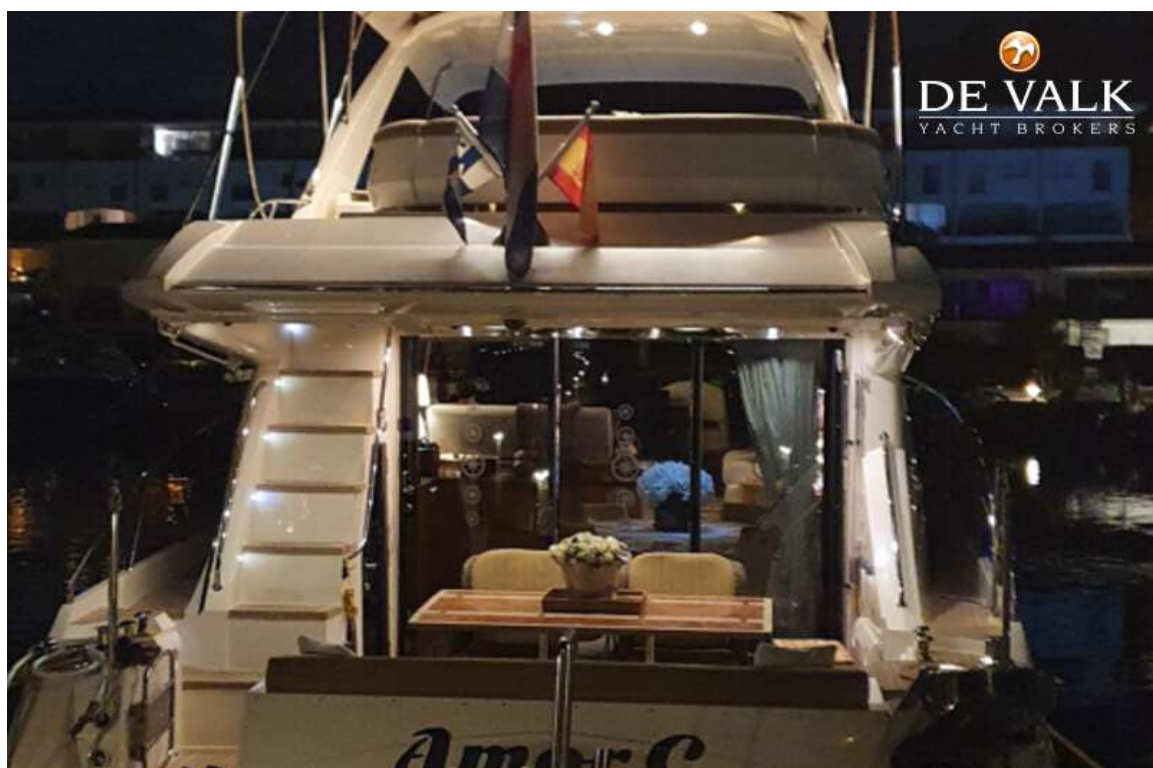
SEALINE T60



SEALINE T60



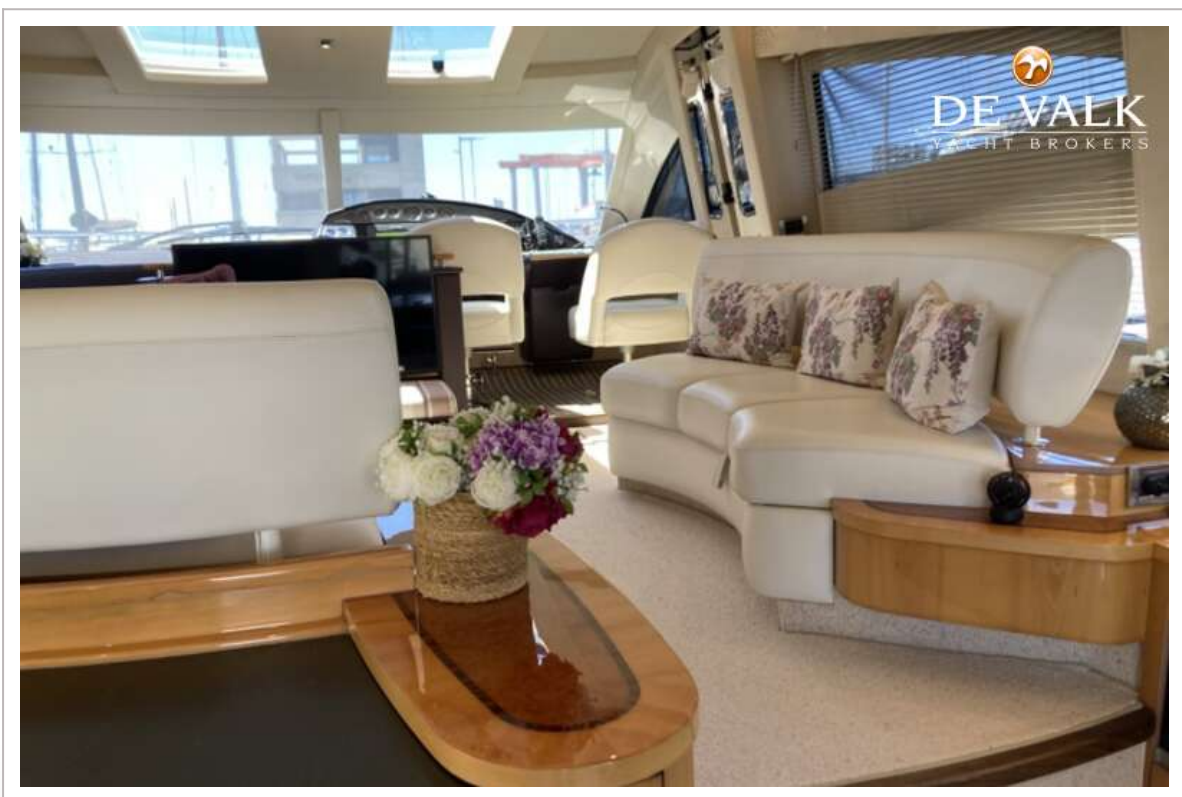
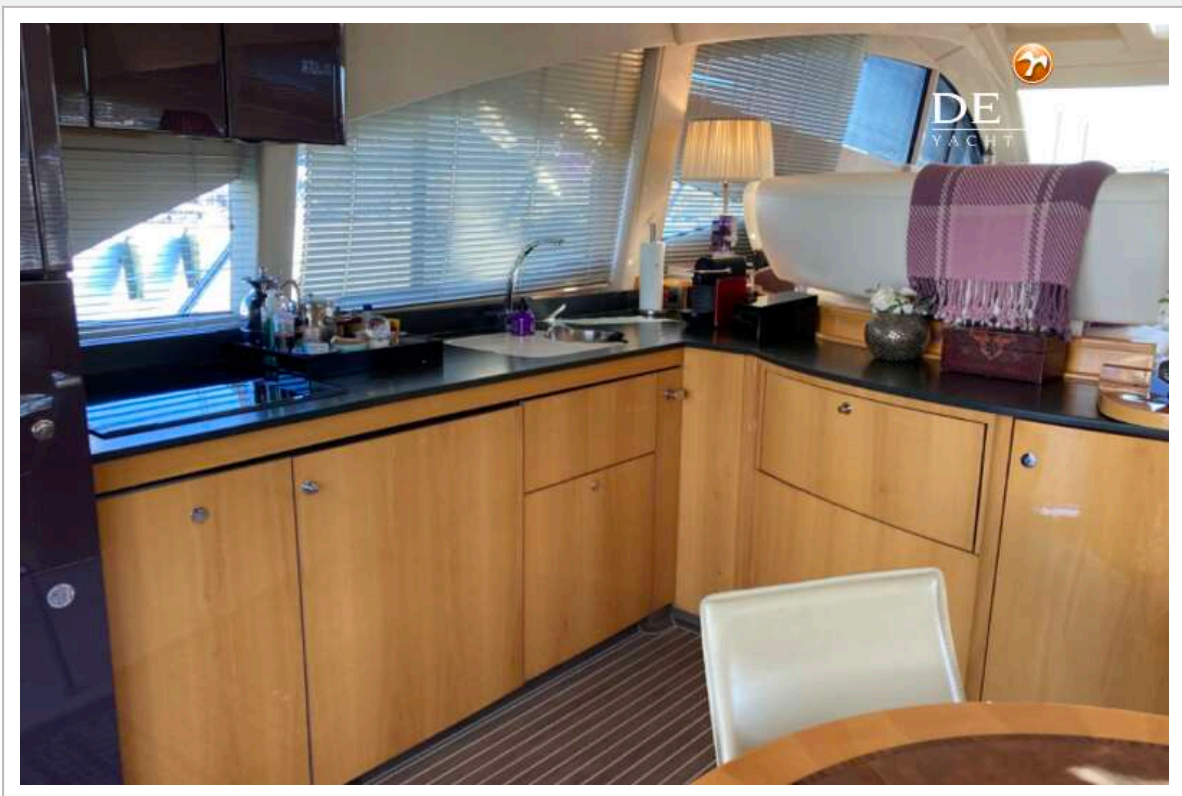
SEALINE T60



SEALINE T60



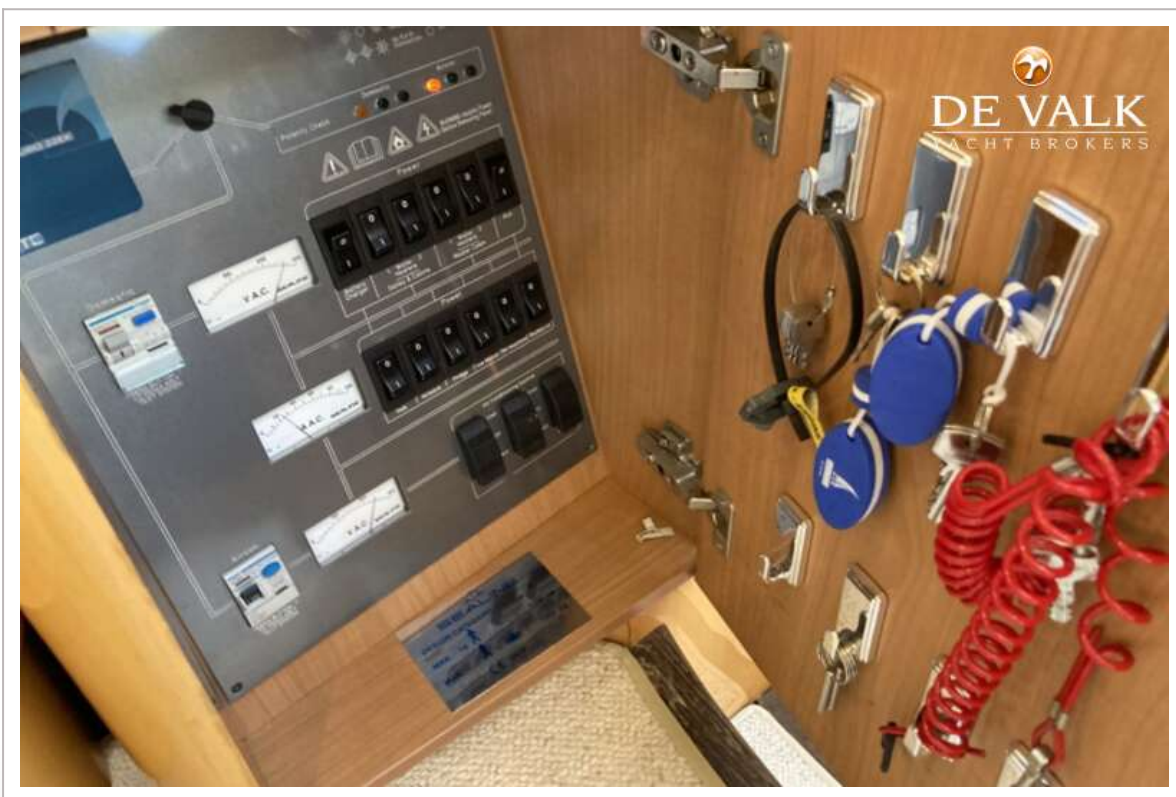
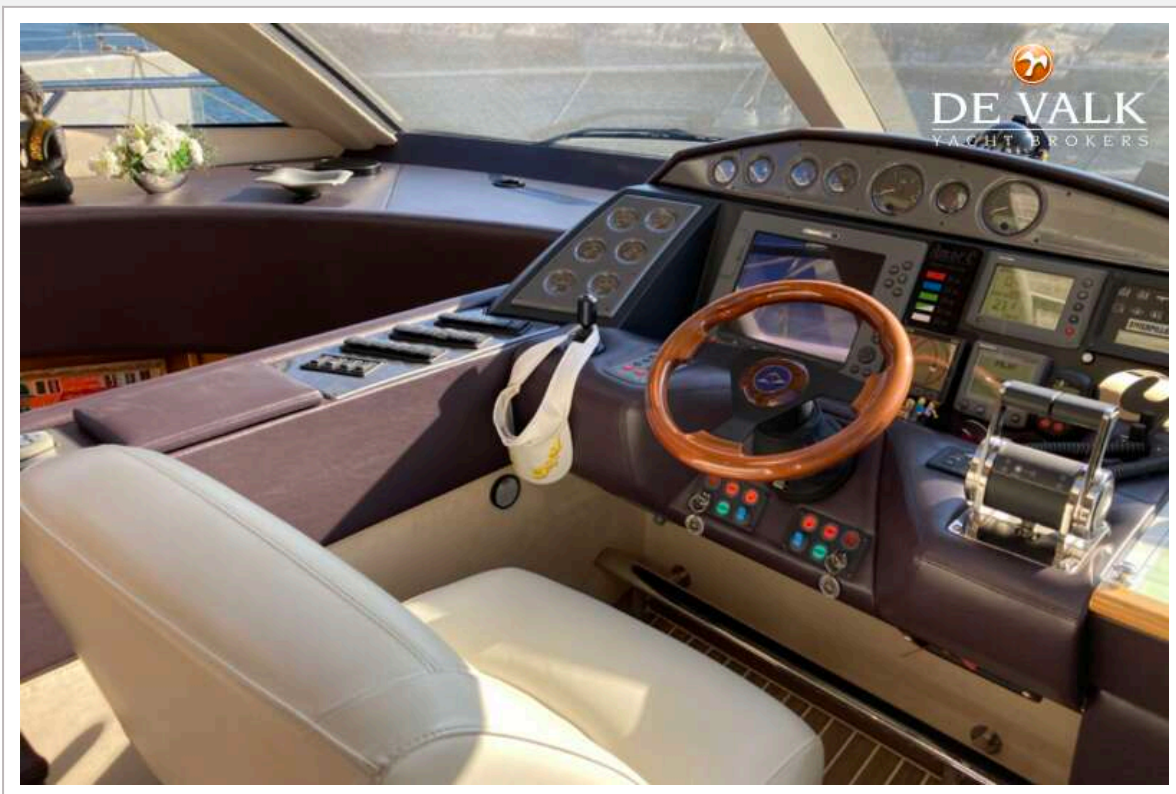
SEALINE T60

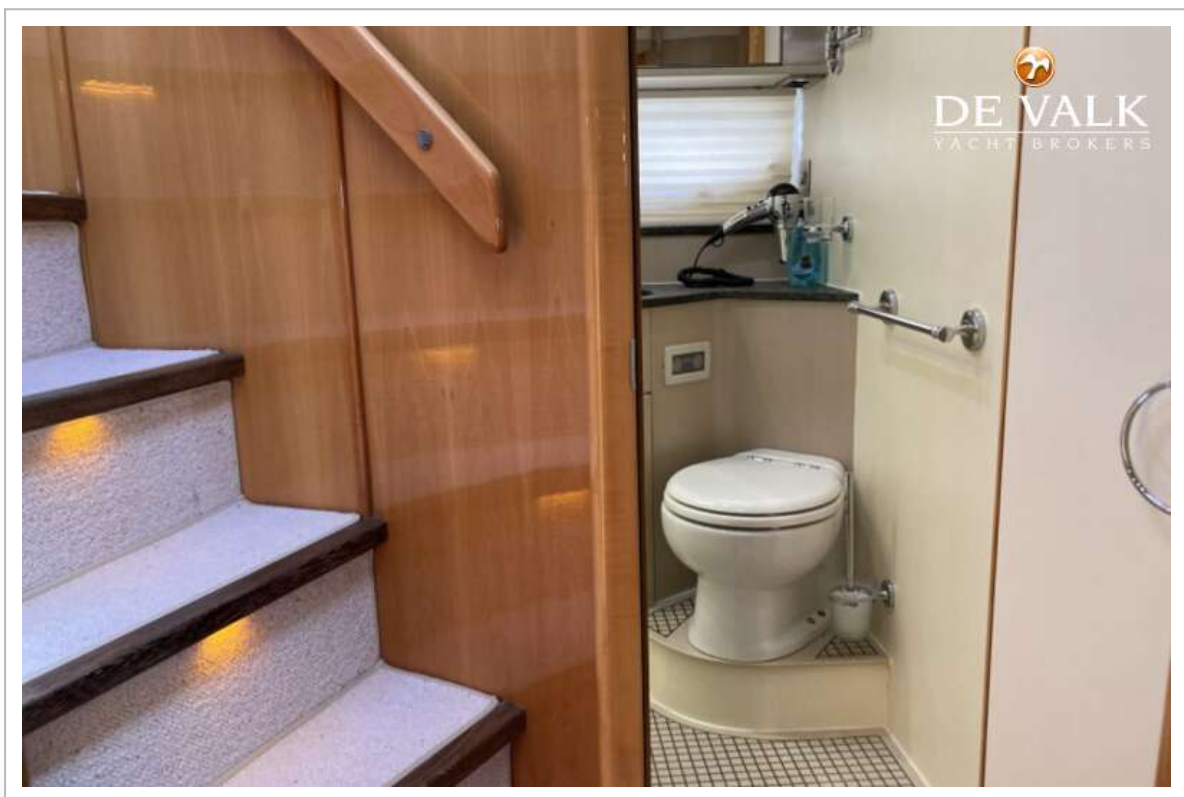
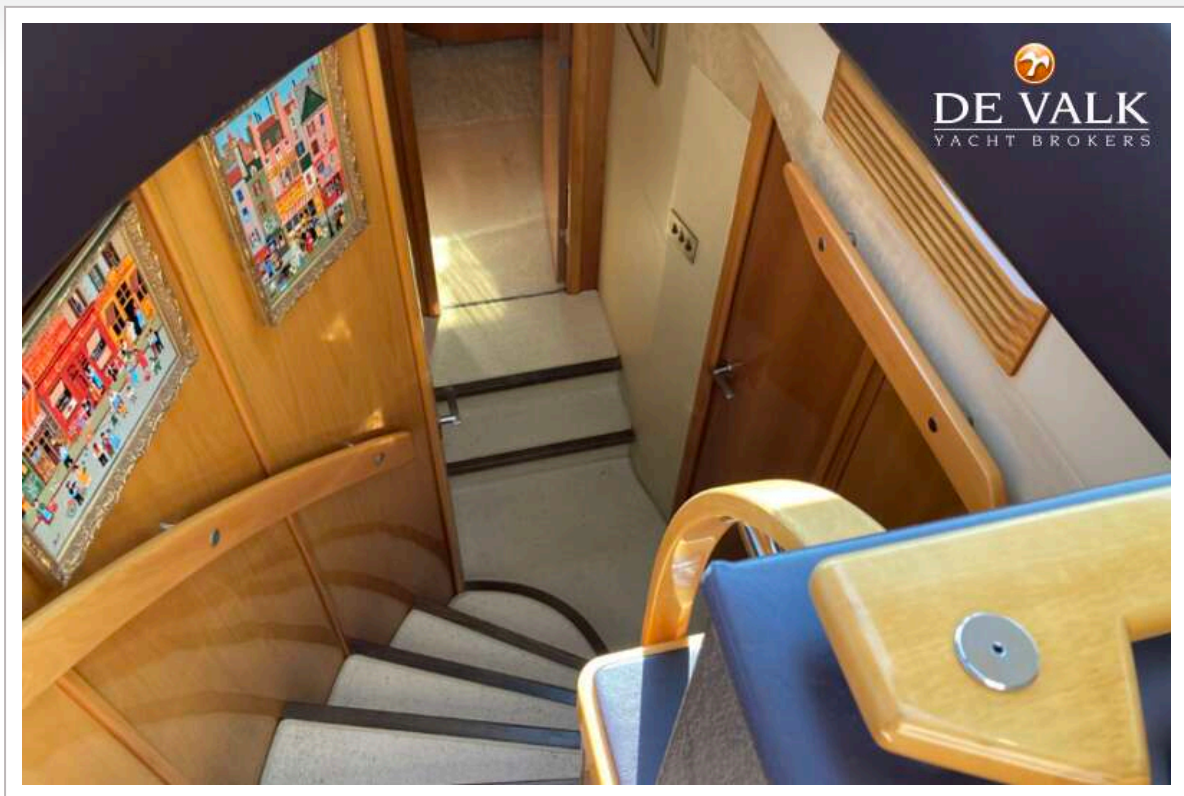


SEALINE T60

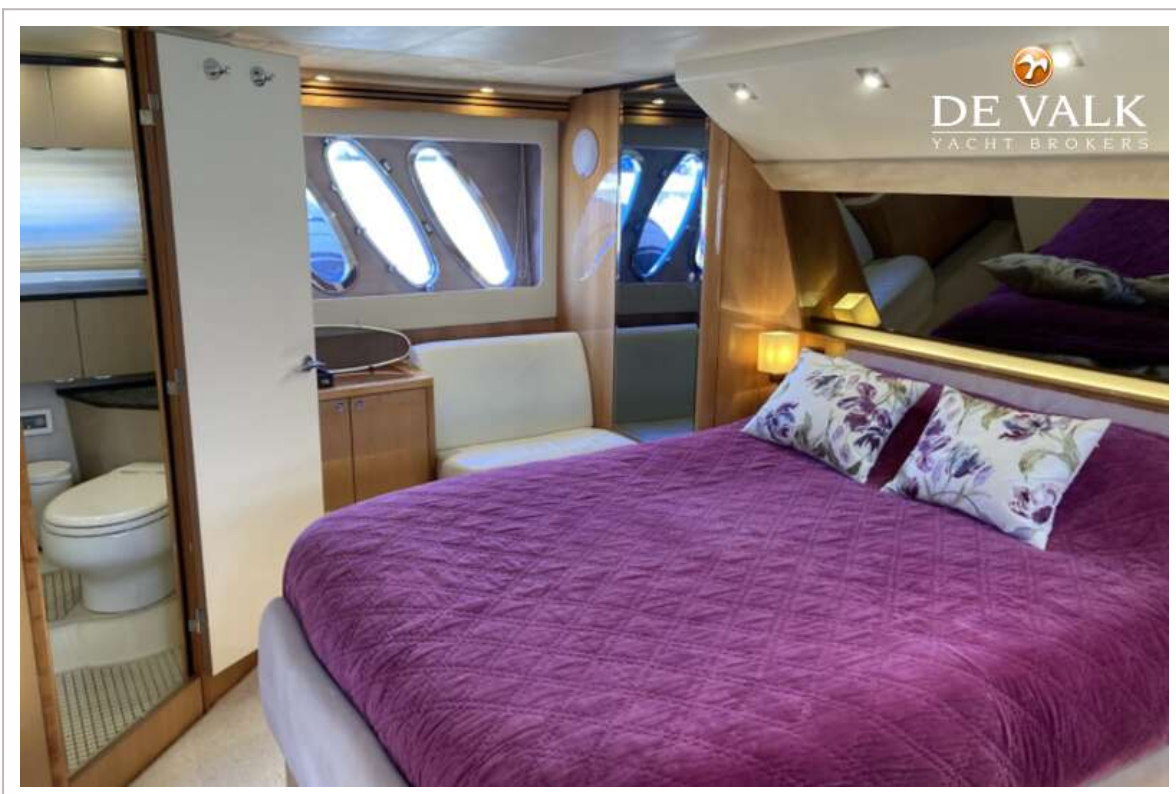
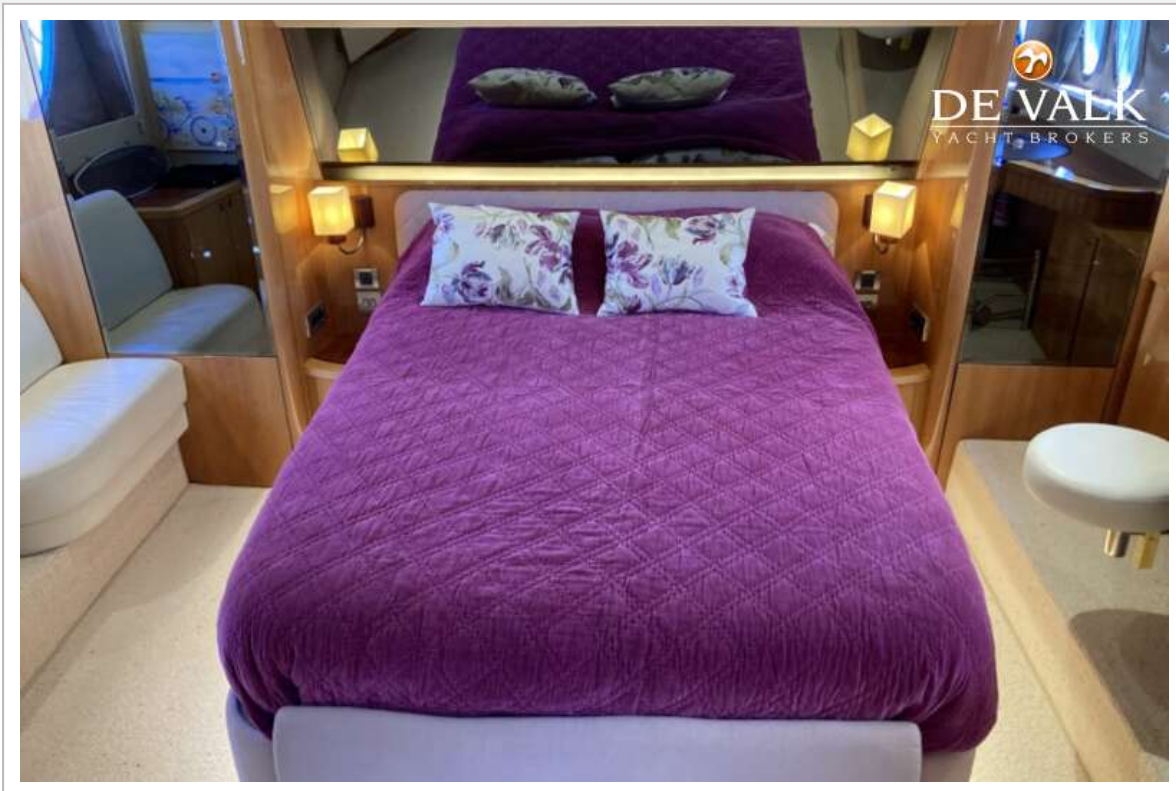


SEALINE T60

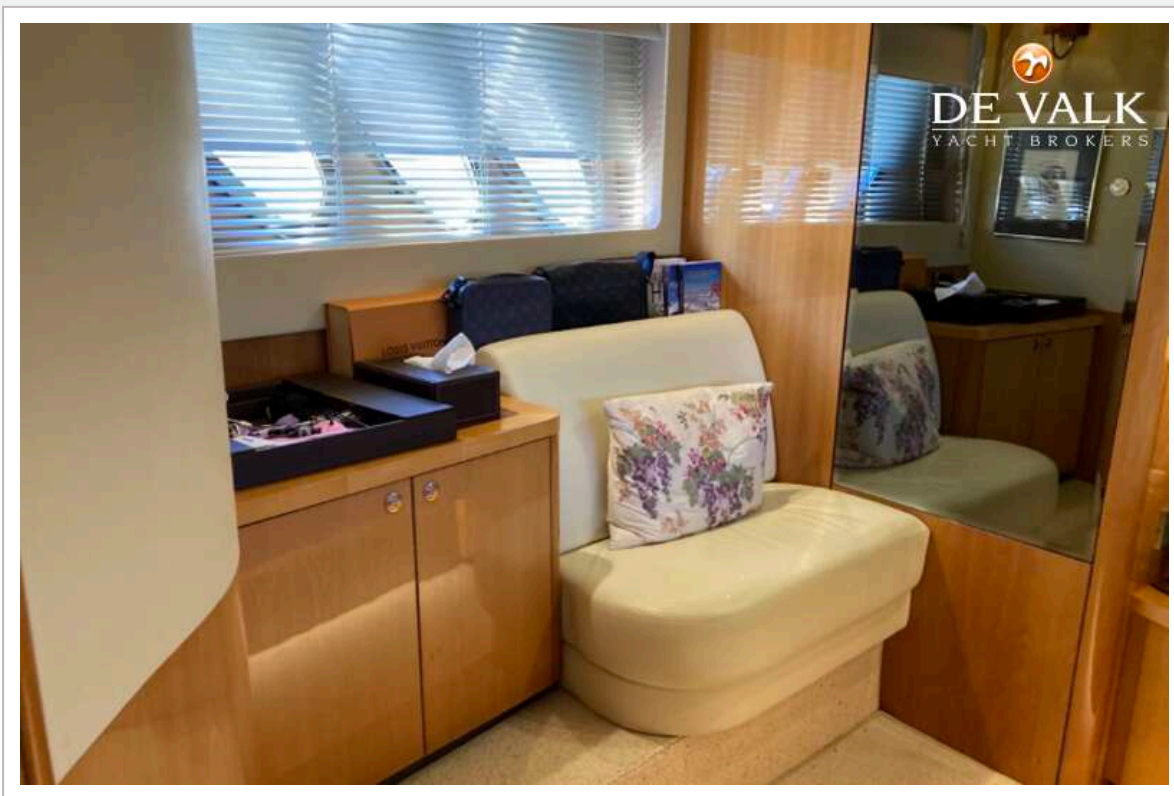




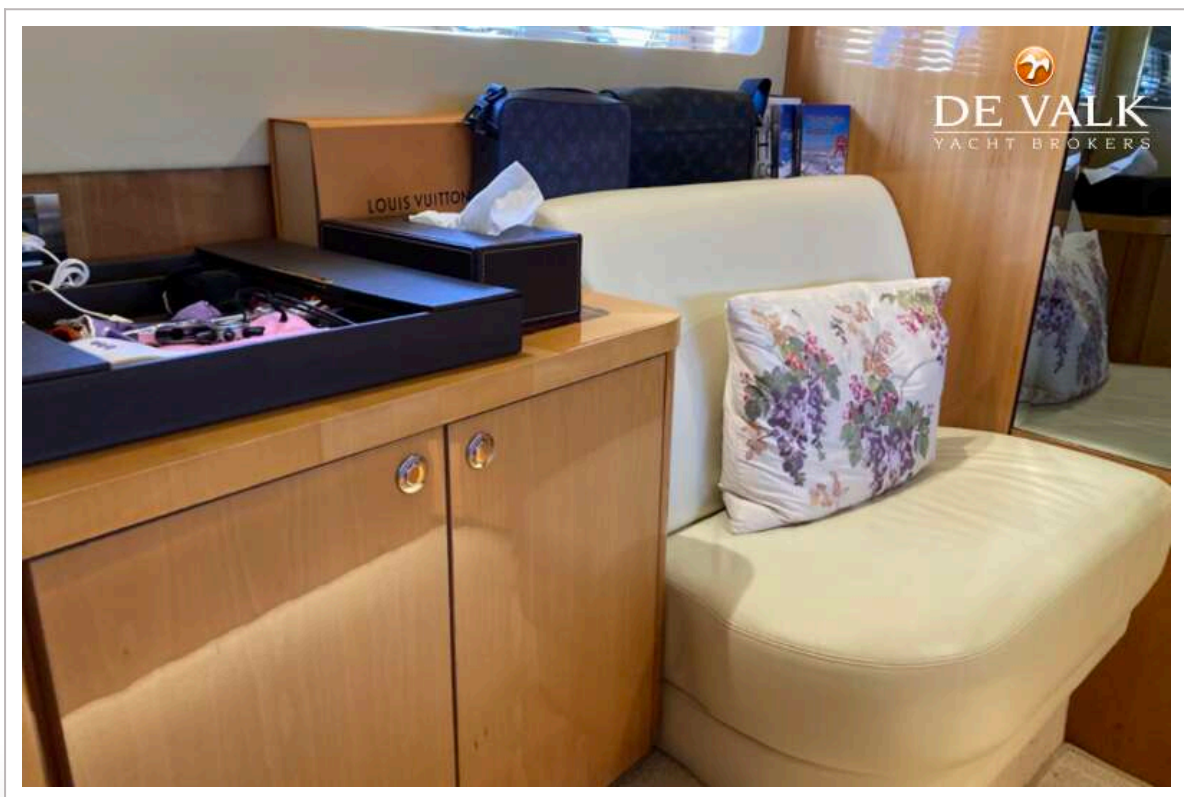
SEALINE T60



SEALINE T60



SEALINE T60



SEALINE T60



SEALINE T60

