



HINCKLEY 49 KETCH

HINCKLEY 49 KETCH

BROKER'S COMMENTS

This Hinckley 49, is a beautiful, but above all safe and comfortable cruising yacht. She has good cruising sailing qualities. And thanks to her centerboard-keel and exceptional wide sail-area. Interior is made of teak, large galley, cozy saloon and two separate bedrooms with own toilet. At the moment she is located in Denmark and can be inspected/viewed after appointment. unique opportunity,. must see.

Hans Visser

SPECIFICATIONS

Dimensions	14.94 x 4.09 x 1,70 / 2.50 (m)	Builder	Henry R. Hinckley & Co.
Built	1974	Cabins	2
Material	GRP	Berths	5
Engine(s)	1 x Ford Lehman SP135 diesel	Hp/Kw	135.00 (hp), 99.36 (kw)
Asking price	sold (VAT)	Lying	elsewhere / Not at sales office

CONTACT

Sales office	De Valk Hindeloopen B.V.	Telephone	+31 514 52 40 00
Address	Oosterstrand 1 8713 JS Hindeloopen NL	E-mail	hindeloopen@devalk.nl

DISCLAIMER

These particulars are given in good faith as supplied but cannot be guaranteed.



HINCKLEY 49 KETCH

GENERAL

Model	HINCKLEY 49 KETCH
Type	sailing yacht
LOA (m)	14,94
LWL (m)	12,32
Beam (m)	4,09
Draft (m)	2,50
Draft min (m)	1,70
Air draft (m)	17,40
Headroom (m)	2,04
Year built	1974
Builder	Henry R. Hinckley & Co.
Country	U.S.A.
Designer	Henry Hinckley
Displacement (t)	18,2
Ballast (tonnes)	lead 5,5
Hull material	GRP
Hull colour	blue
Hull shape	round-bilged
Keel type	centreboard
Superstructure material	GRP
Rubbing strake	wood & Brass
Deck material	GRP
Deck finish	non-skid paint
Superstructure deck finish	non-skid moulded in
Cockpit deck finish	non-skid moulded in
Antifouling (year)	2022
Dorades	4
Window frame	aluminium
Window material	glass
Portholes	Two bronze



HINCKLEY 49 KETCH

Fuel tank (litre)	GRP 1200 ltr.
Level indicator (fuel tank)	yes
Freshwater tank (litre)	GRP 4 tanks total 2000 ltr.
Blackwater tank (litre)	GRP
Blackwater tank extraction	deck extraction + pump 200 ltr.
Greywater tank (litre)	GRP 2 tanks total 200 ltr.
Wheel steering	cable steering
Emergency tiller	Yes

ACCOMMODATION

Cabins	2
Berths	5
Interior	mahogany
Floor	teak and holly solid
Saloon	yes
Headroom saloon (m)	2,04 mtr.
Heating	stove diesel Newport Dickinson
Air-conditioning	reverse cycle airco Does not work
Navigation center	yes
Chart table	yes
Aft Cabin	Owners cabin
Dinette	yes
Dinette to convert into berth	yes
Galley	yes
Countertop	Formica
Sink	stainless steel double
Cooker	calor gas Shipmate
Oven	In cooker
Fridge	yes
Freezer	yes
Hot water system	110V + engine



HINCKLEY 49 KETCH

Water pressure system	electrical
Manual and/or foot pump	Backup
Crockery	yes
Owners cabin	double bed + single bed aft cabin
Bed length (m)	1,98 mtr.
Wardrobe	hanging and drawers
Bathroom	en suite
Toilet	Yes
Toilet system	manual
Wash basin	Yes
Shower	Yes
Guest cabin 1	v-bed
Bed length (m)	2,00 mtr.
Wardrobe	hanging and drawers
Bathroom	shared
Toilet	Yes
Toilet system	manual
Wash basin	yes

MACHINERY

No of engines	1
Make	Ford Lehman
Type	SP135
HP	135
kW	99.36
Fuel	diesel
Year installed	1999
Year of overhaul	2013
Maximum speed (kn)	8
Cruising speed (kn)	6,25
Range (nm)	1000



HINCKLEY 49 KETCH

Engine hours	2900
Engine cooling system	freshwater heat exchanger
Drive	shaft
Engine controls	bowden cable
Gearbox	hydraulic
Bowthruster	electric Side Power
Exhaust	watercooled
Propeller type	feathering MaxProp
Propeller shaft material	stainless steel
Shaft lubrication	water
Manual bilge pump	yes
Electric bilge pump	yes
Bilge alarm	yes
Generator	wet exhaust Kohler
Running hours generator	Approx. 1200
Start battery	Yes
Service battery	Yes
Generator battery	Yes
Bowthruster battery	Yes
Battery monitor	Yes
Battery charger	Yes
Solar panel	2
Watermaker	Pickled not used

NAVIGATION

Compass	Yes
Depth sounder	Yes
VHF	Yes
Autopilot	Nexus
Wind vane steering install.	Hydrovane
Radar	Yes



HINCKLEY 49 KETCH

GPS	Yes
AIS receiver	Yes
Navigation lights	yes

EQUIPMENT

Sprayhood	yes
Bimini	yes
Cockpit cushions	yes
Cockpit table	yes
Boarding ladder	stainless steel
Anchor	Spade
Anchor chain	Approx. 60 mtr.
Anchor 2	Danforth And a Delta
Other ground tackle	30 mtr. rope
Windlass	electrical Ideal
Capstan	yes
Deck wash	yes
Davits	stainless steel
Davits controls	manual
Sea railing	wire stainless steel
Grab rail (superstructure)	teak
Lifejackets	yes
Safety harness	yes
Safety lines on deck	yes
Fenders	yes
Mooring lines	yes
Spare parts	yes
Tools	yes
Fire extinguisher	yes
Latest extinguisher survey	2021
Extinguisher in engine room	yes



HINCKLEY 49 KETCH

RIGGING

Rigging	ketch
Standing rigging	wire
Material mast	aluminium
Spreaders	One pair both masts
Keel stepped mast	yes
Mainsail	yes
Mainsail cover	yes
Fully battened mainsail	yes
Mizzen	yes
Mizzen sailcover	yes
Genoa I	yes
Genoa II	yes
Genoa furler	Schaefer 3000
A-symmetric spi	yes
Staysail	yes
Removable innerforestay	yes
Reefing System	slabreefing
Primary sheet winch	Electric
Secondary sheet winch	Yes
Halyard winches	Yes
Spinnaker winch	Yes
Multifunctional winches	Yes
Spi-pole	aluminium
Isolated backstay	Yes



HINCKLEY 49 KETCH



HINCKLEY 49 KETCH



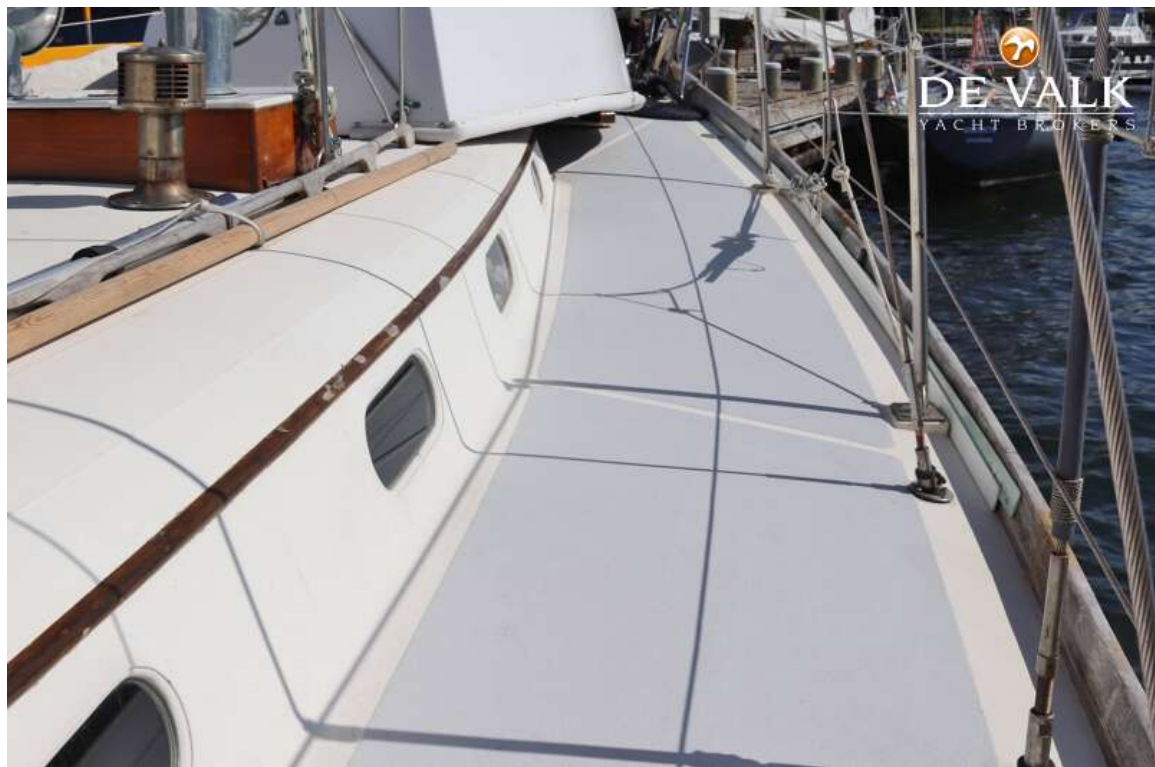
HINCKLEY 49 KETCH



HINCKLEY 49 KETCH



HINCKLEY 49 KETCH



HINCKLEY 49 KETCH



HINCKLEY 49 KETCH



HINCKLEY 49 KETCH



HINCKLEY 49 KETCH



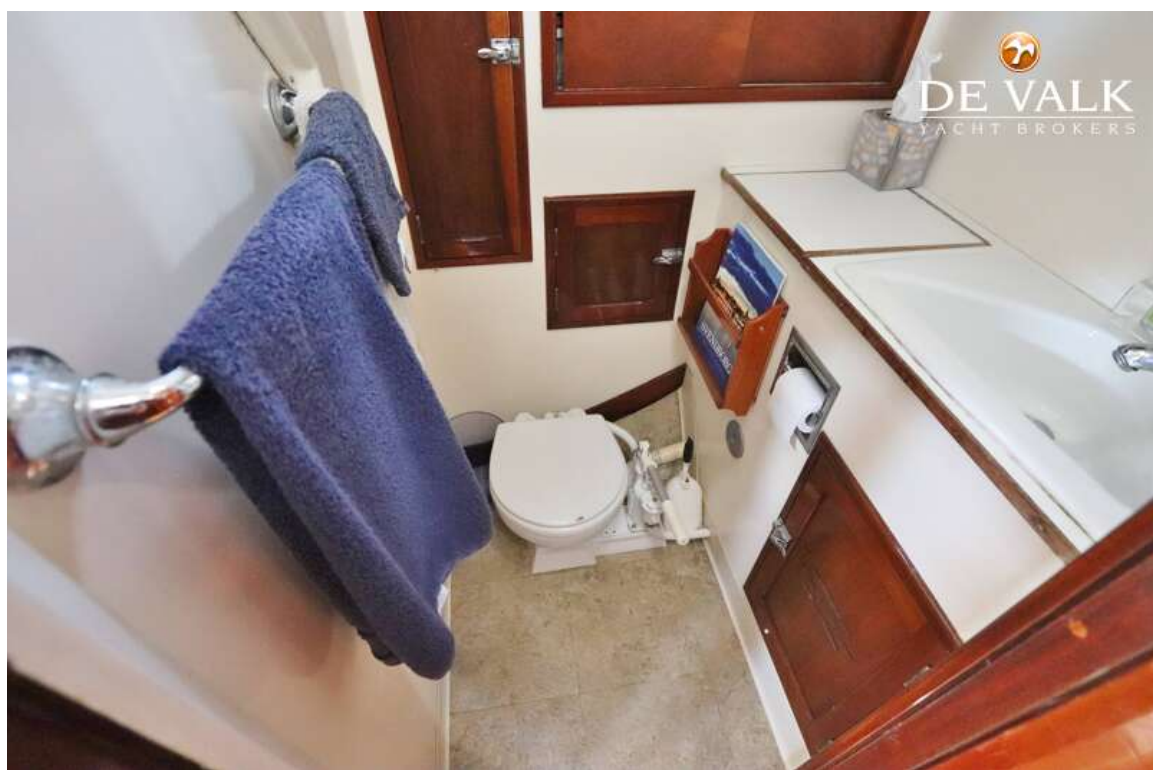
HINCKLEY 49 KETCH



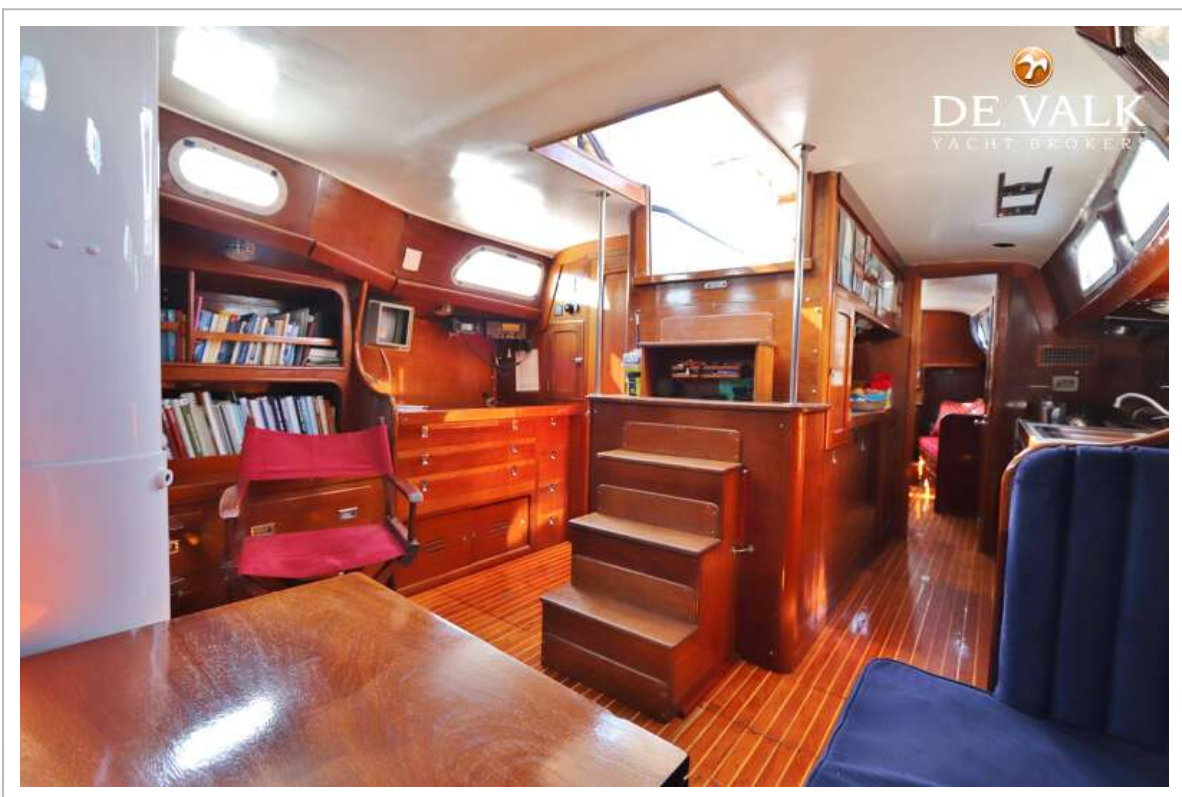
HINCKLEY 49 KETCH



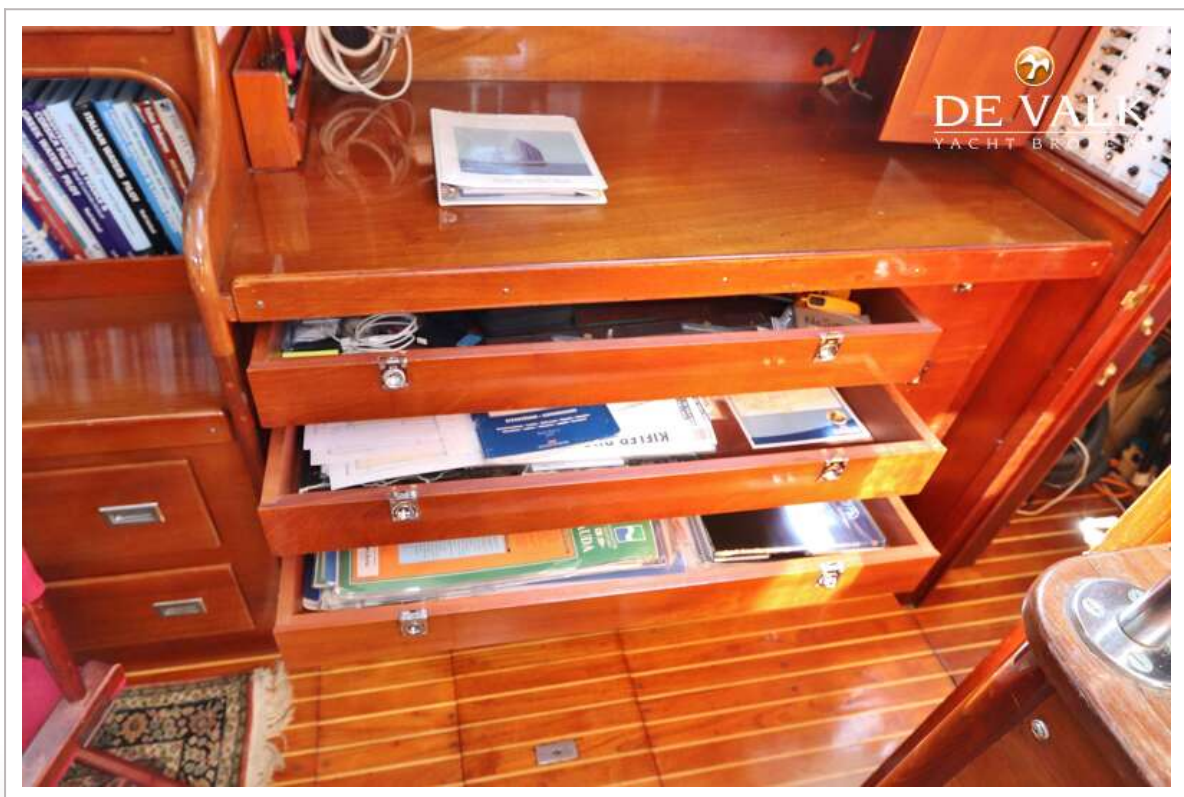
HINCKLEY 49 KETCH



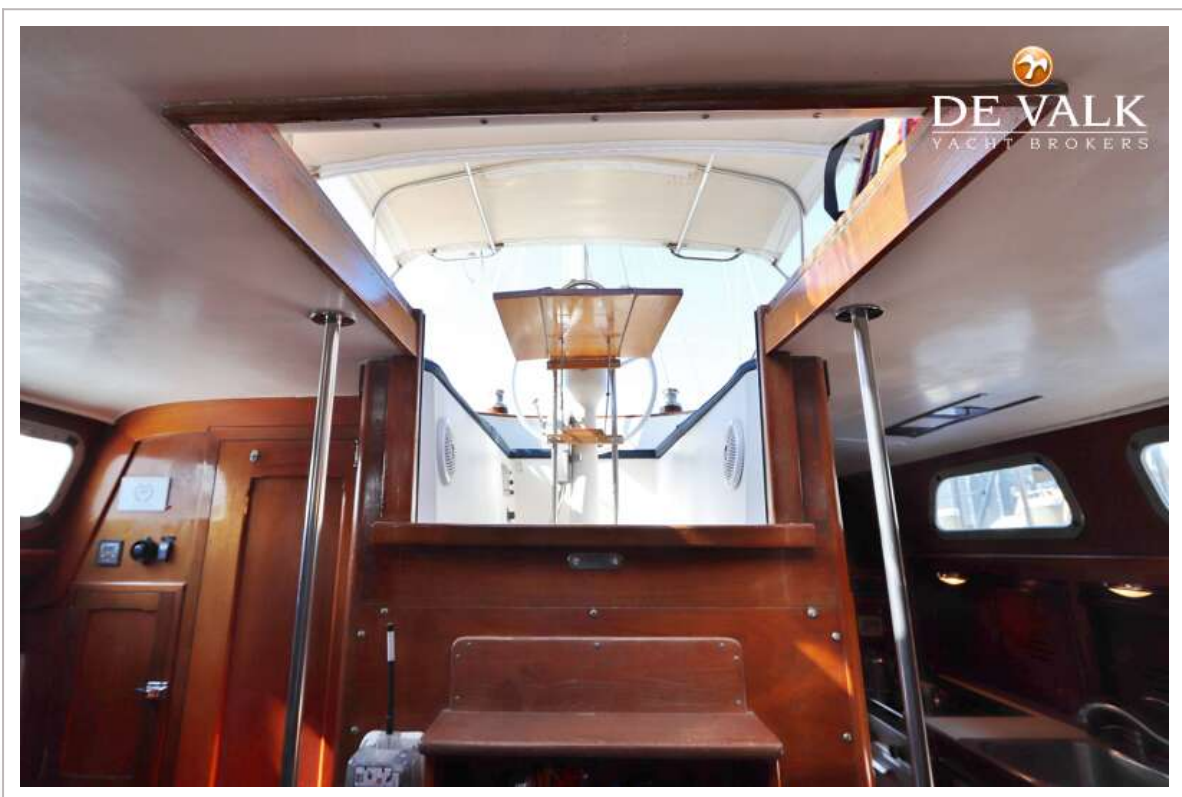
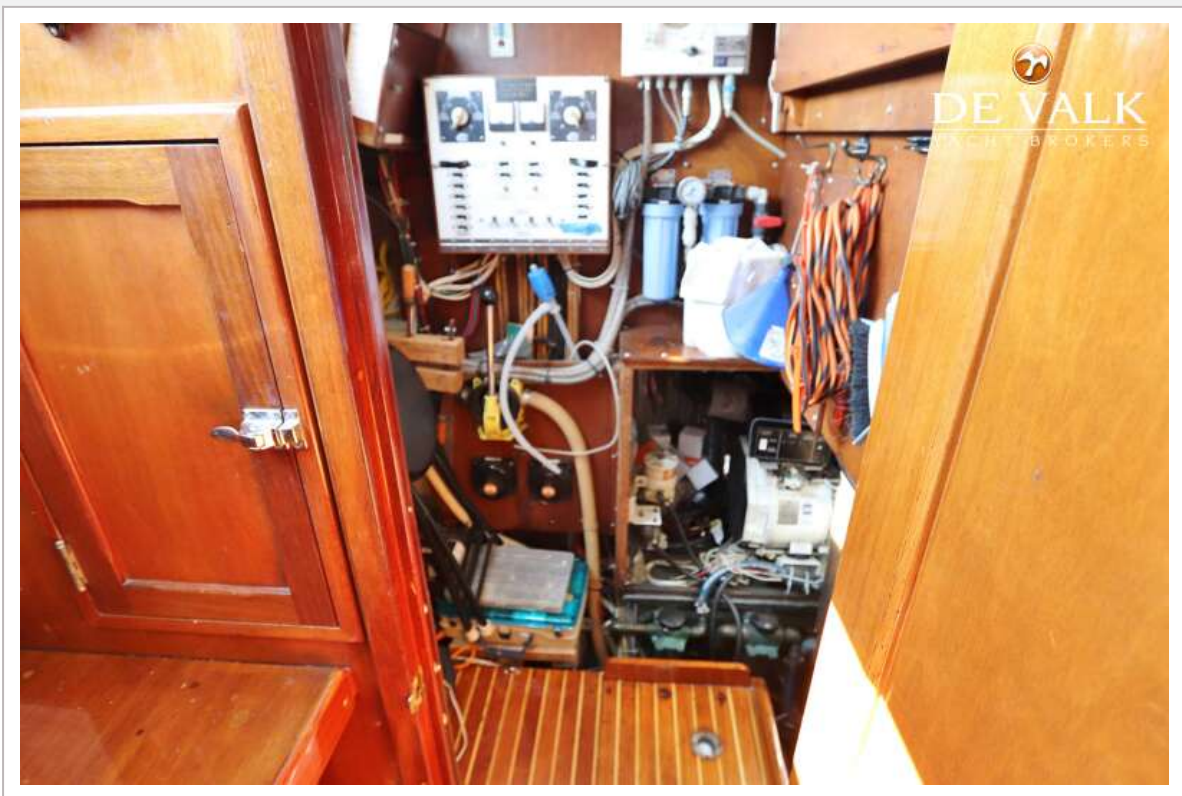
HINCKLEY 49 KETCH



HINCKLEY 49 KETCH



HINCKLEY 49 KETCH



HINCKLEY 49 KETCH



HINCKLEY 49 KETCH



HINCKLEY 49 KETCH

