



## SUPER VAN CRAFT 1140

# SUPER VAN CRAFT 1140

## BROKER'S COMMENTS

Super van Craft "Stern" has always been well maintained and stored inside a boathouse when not used. A brand new Nanni engine has been mounted in 2022 together with a paintjob of her engine room. With her electric bow and stern thruster she is easy to handle. Ready to go and easy to visit in our covered salesmarina in Sneek.

*Pieter Bosma*

## SPECIFICATIONS

<b>Dimensions</b>	11.40 x 3.30 x 1.20 (m)	<b>Builder</b>	Klaassen Voorschoten
<b>Built</b>	1974	<b>Cabins</b>	2
<b>Material</b>	Steel	<b>Berths</b>	5
<b>Engine(s)</b>	1 x Nanni N4.100 diesel	<b>Hp/Kw</b>	100.00 (hp), 73.60 (kw)
<b>Asking price</b>	sold (VAT )	<b>Lying</b>	at sales office

## CONTACT

<b>Sales office</b>	De Valk Sneek	<b>Telephone</b>	+31 (0)515 42 80 30
<b>Address</b>	Zwolsmanweg 7 8606 KC Sneek NL	<b>E-mail</b>	sneek@devalk.nl

## DISCLAIMER

These particulars are given in good faith as supplied but cannot be guaranteed.



## GENERAL

Model	SUPER VAN CRAFT 1140
Type	motor yacht
LOA (m)	11,40
Beam (m)	3,30
Draft (m)	1,20
Air draft (m)	2,80
Headroom (m)	1,85
Year built	1974
Builder	Klaassen Voorschoten
Country	The Netherlands
Designer	Dhr. Klaassen
Displacement (t)	14
Hull material	steel
Hull colour	white
Hull shape	round-bilged
Keel type	long keel
Bilge keels	yes
Superstructure material	mahogany
Rubbing strake	steel
Deck material	steel
Deck finish	teak
Superstructure deck finish	paint
Window frame	copper chromed
Window material	glass
Deckhatch	yes
Portholes	yes
Insulation	rockwool
Mast can be lowered	manual
Fuel tank (litre)	steel 1000
Freshwater tank (litre)	steel 500



Wheel steering	chain steering
Inside helm position	yes
Outside helm position	yes

## ACCOMMODATION

Cabins	2
Berths	5
Interior	mahogany
Floor	carpet
Aft deck	yes
Saloon	yes
Headroom saloon (m)	1,85
Sliding roof	yes
Heating	diesel ducted hot air Webasto
Aft Cabin	yes
Opening door to aft deck	yes
Galley	yes
Countertop	plastic
Sink	stainless steel
Cooker	calor gas 4 burner
Fridge	Isotherm
Hot water system	220V + engine Boiler
Water pressure system	electrical
Owners cabin	Double + single
Bed length (m)	2.00
Wardrobe	hanging and shelves
Bathroom	en suite
Toilet	en suite
Toilet system	manual
Wash basin	yes
Shower	yes



# SUPER VAN CRAFT 1140

Guest cabin 1	3 single
Bed length (m)	1.95
Wardrobe	hanging and shelves

## MACHINERY

No of engines	1
Make	Nanni
Type	N4.100
HP	100
kW	73.60
Fuel	diesel
Year installed	2020
Engine hours	193,1
Engine cooling system	freshwater heat exchanger
Drive	shaft
Shaft seal	yes
Engine controls	bowden cable
Gearbox	yes
Bowthruster	electric
Sternthruster	electric
Exhaust	watercooled
Thrust bearing	yes
Propeller type	fixed

## NAVIGATION

Compass	Sestrel
Depth sounder/log	Raymarine Tridata
VHF	Ray50VHF (2015)

## EQUIPMENT



# SUPER VAN CRAFT 1140

Sprayhood	2015
Cockpit cushions	yes
Cockpit table	yes
Bathing platform	yes
Boarding ladder	steel
Deck shower	Warm/cold
Anchor	Pool
Anchor chain	yes
Windlass	manual
Davits	yes
Davits controls	manual
Sea railing	teak
Grab rail (superstructure)	teak
Railing side opening gates	yes
Wiper	yes
Horn	yes
Fenders	yes
Mooring lines	yes
TV	yes
Fire extinguisher	yes



# SUPER VAN CRAFT 1140





# SUPER VAN CRAFT 1140





# SUPER VAN CRAFT 1140



# SUPER VAN CRAFT 1140





# SUPER VAN CRAFT 1140

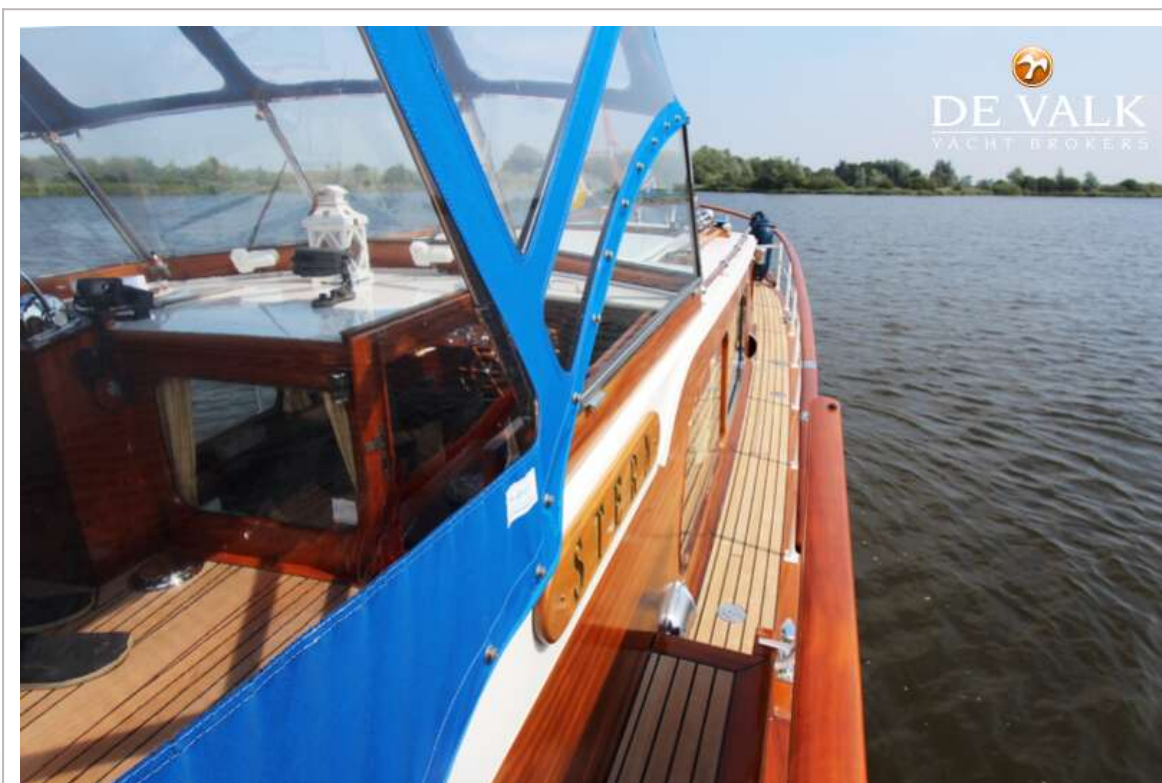


# SUPER VAN CRAFT 1140





# SUPER VAN CRAFT 1140



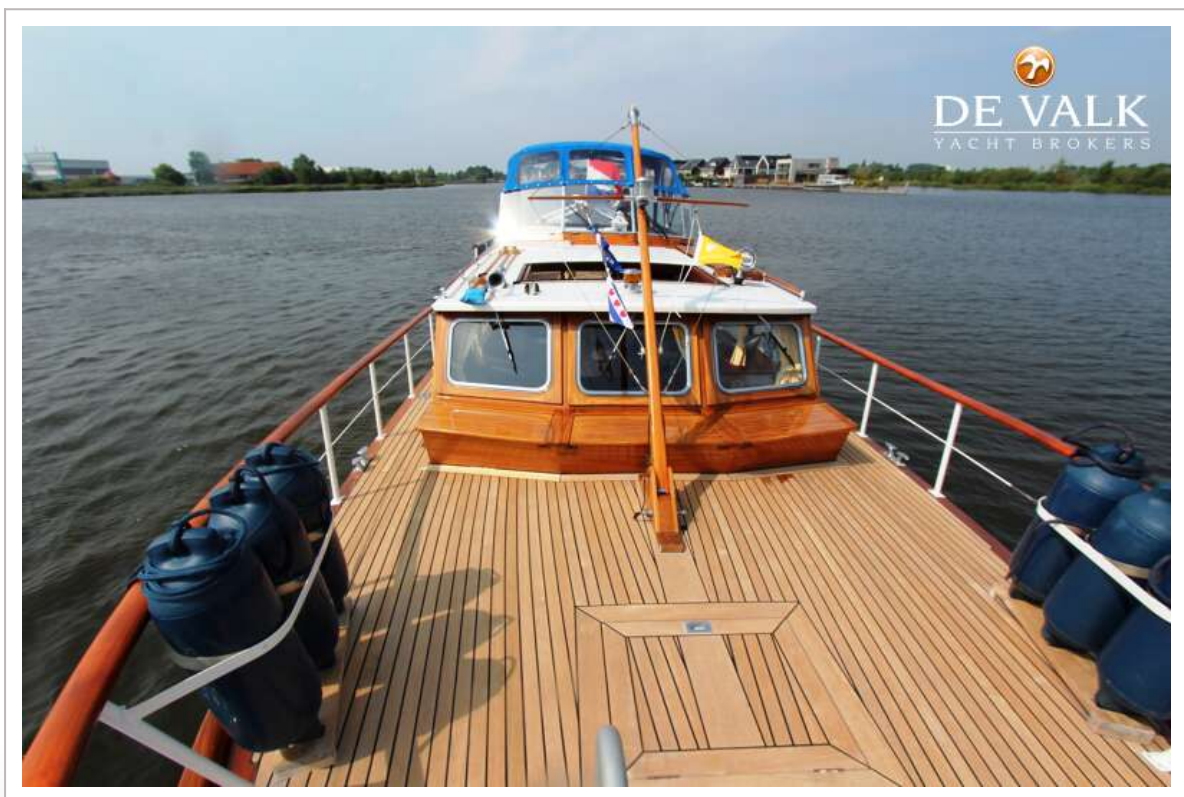
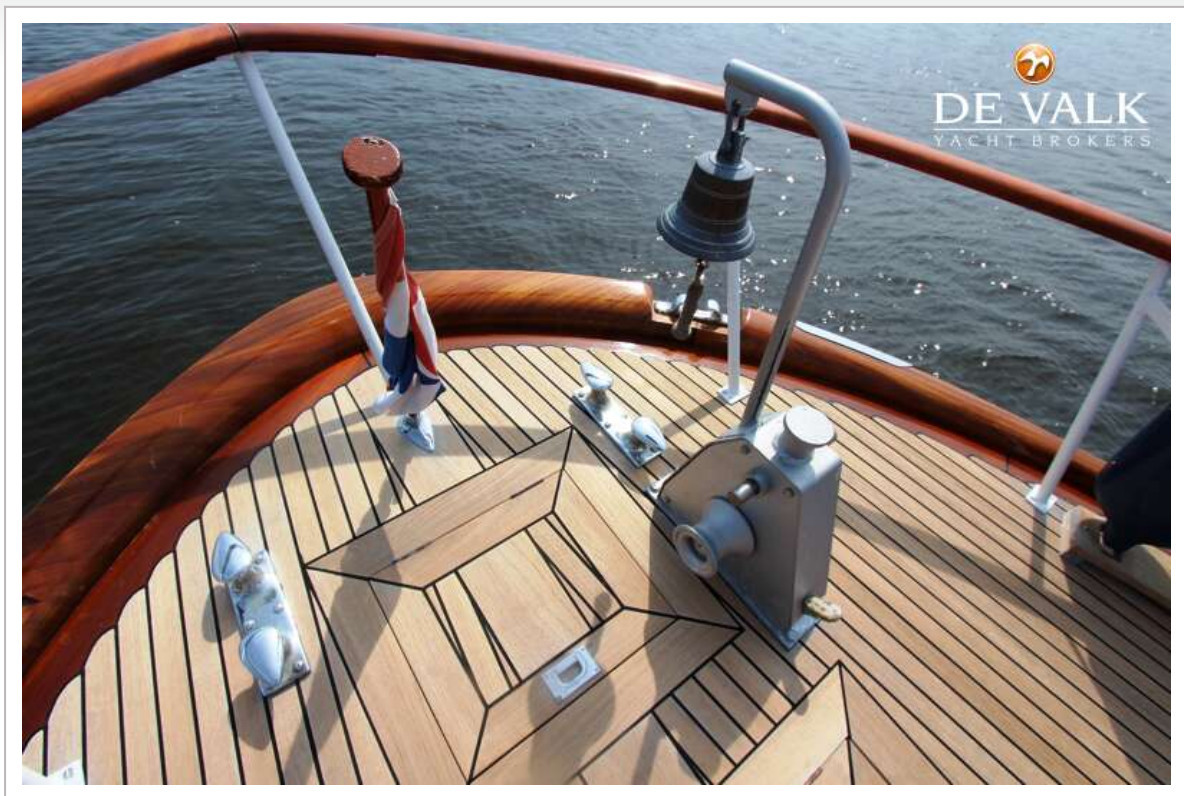


# SUPER VAN CRAFT 1140





# SUPER VAN CRAFT 1140

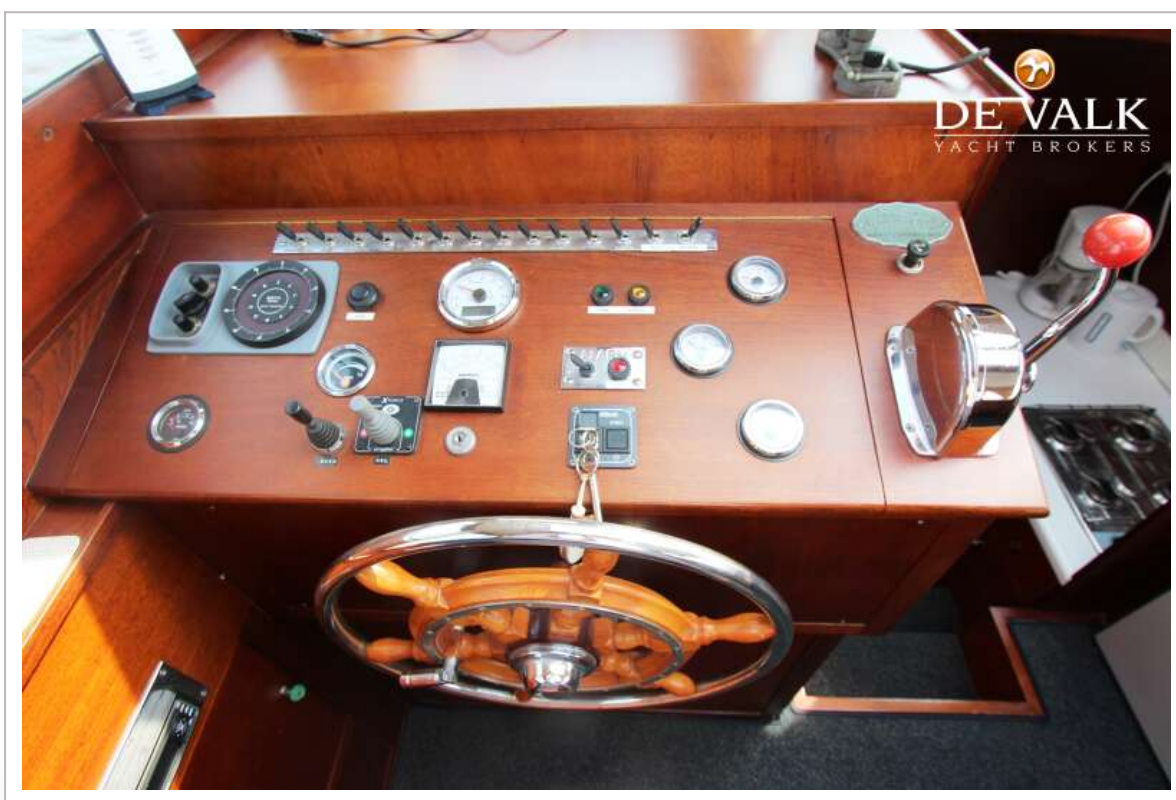
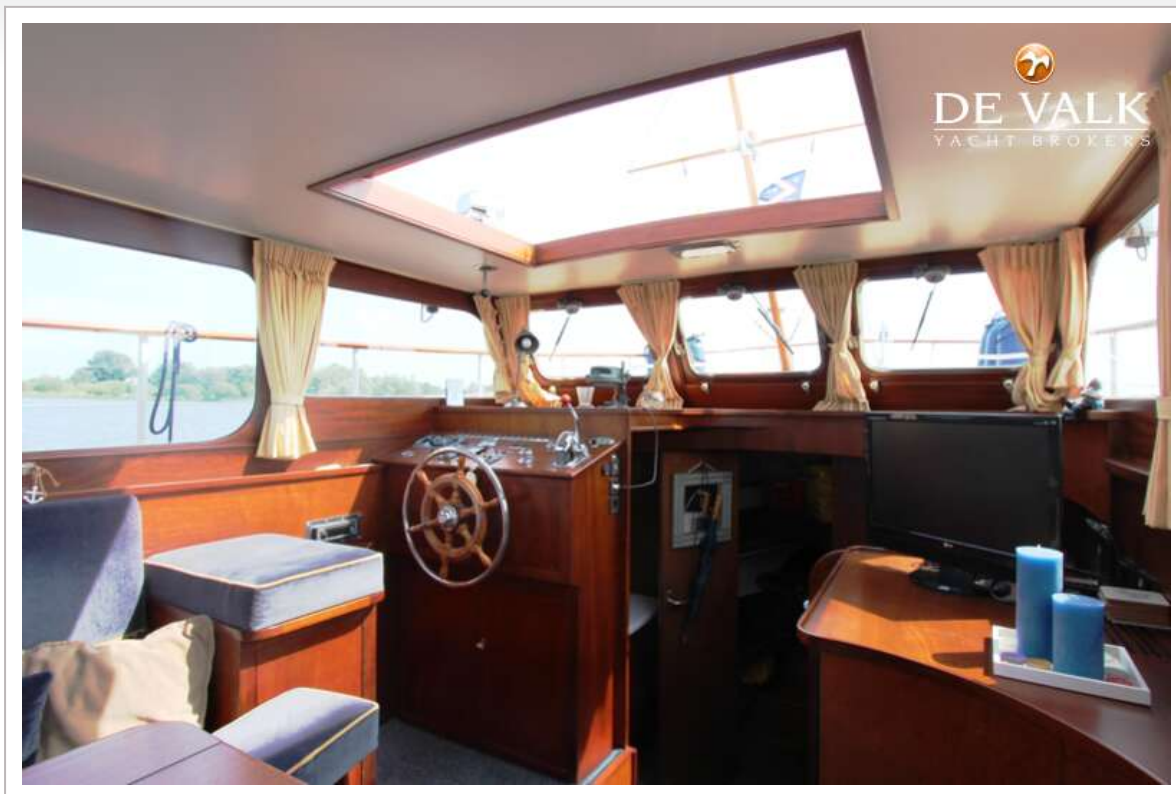


# SUPER VAN CRAFT 1140

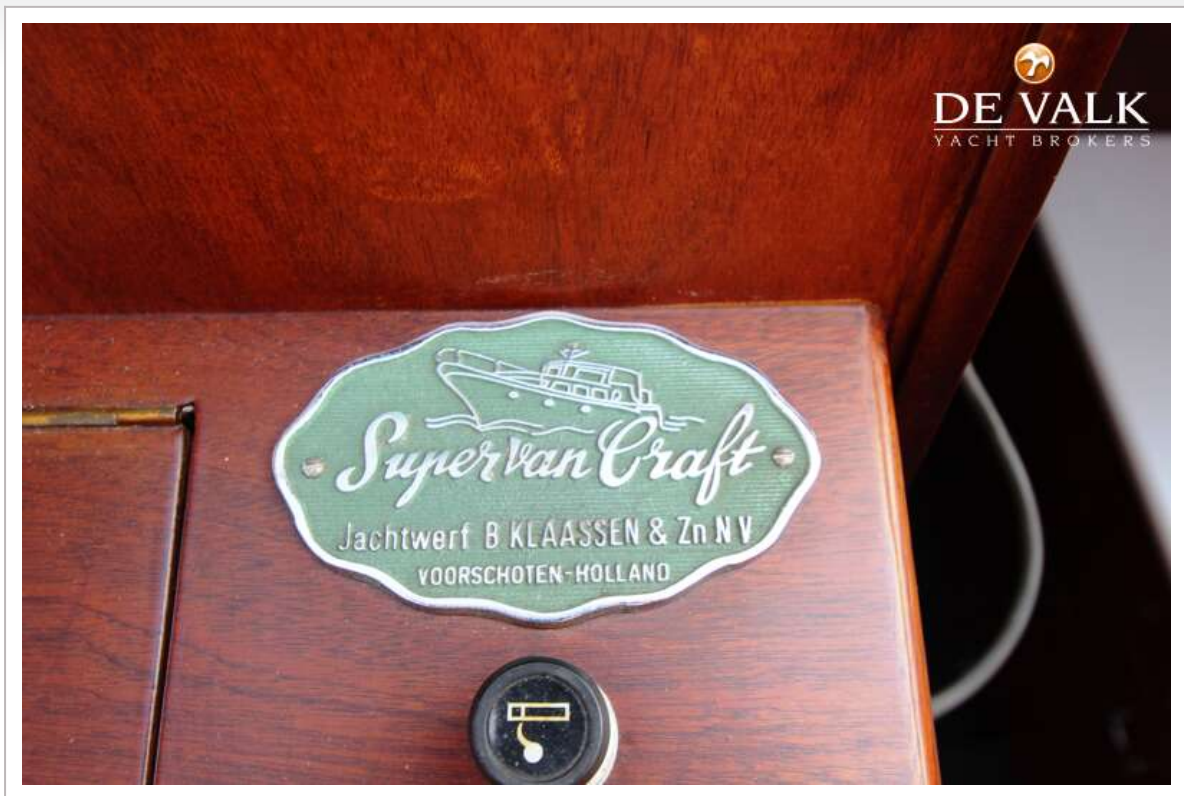




# SUPER VAN CRAFT 1140



# SUPER VAN CRAFT 1140

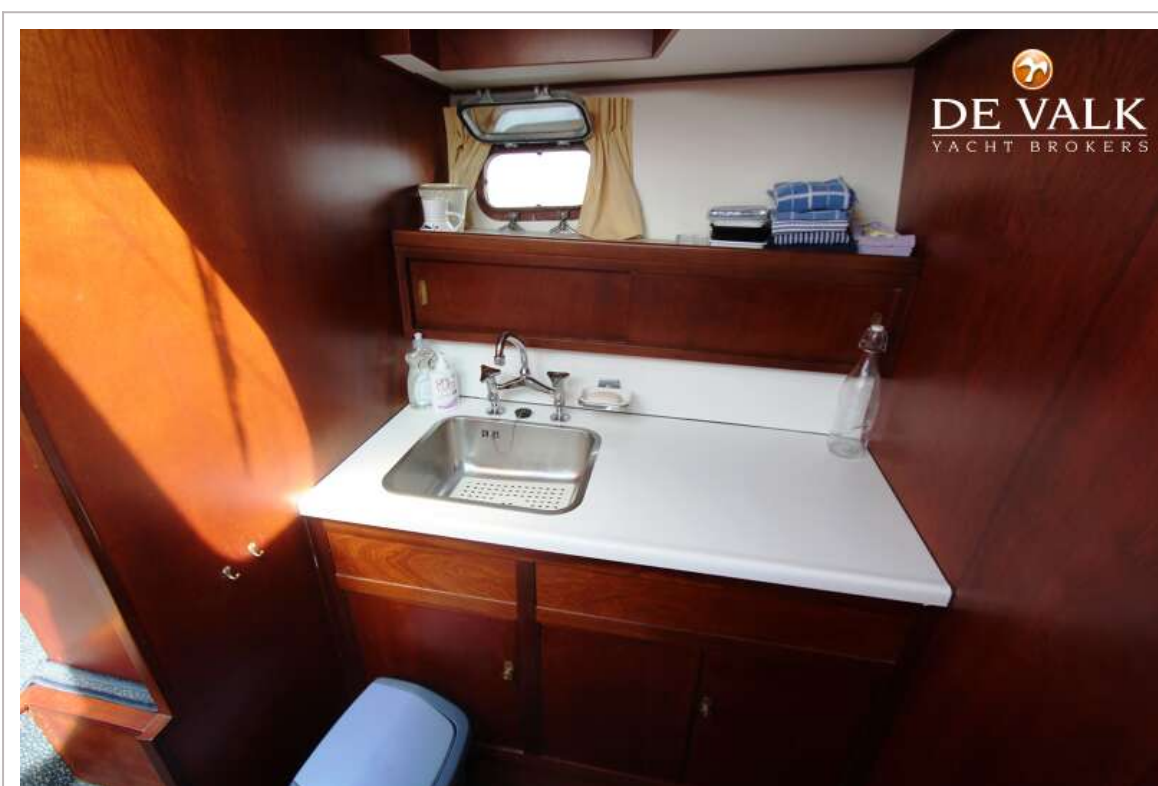




# SUPER VAN CRAFT 1140

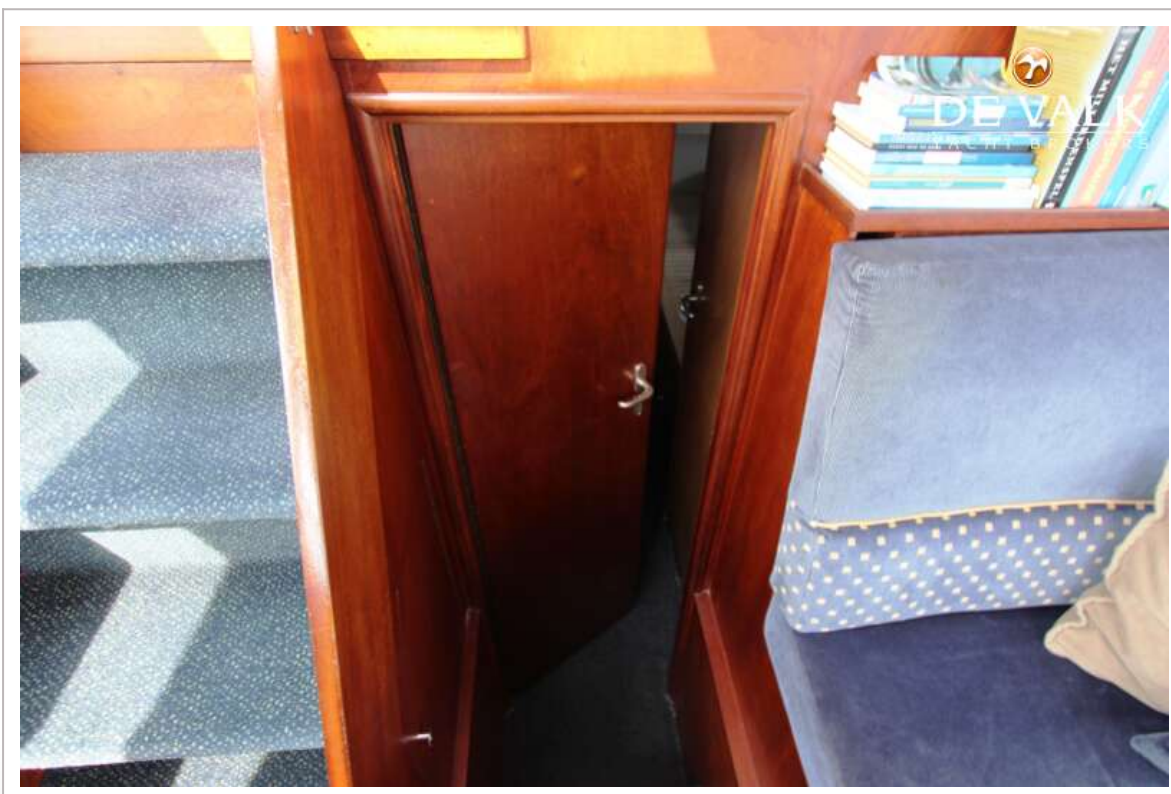


# SUPER VAN CRAFT 1140

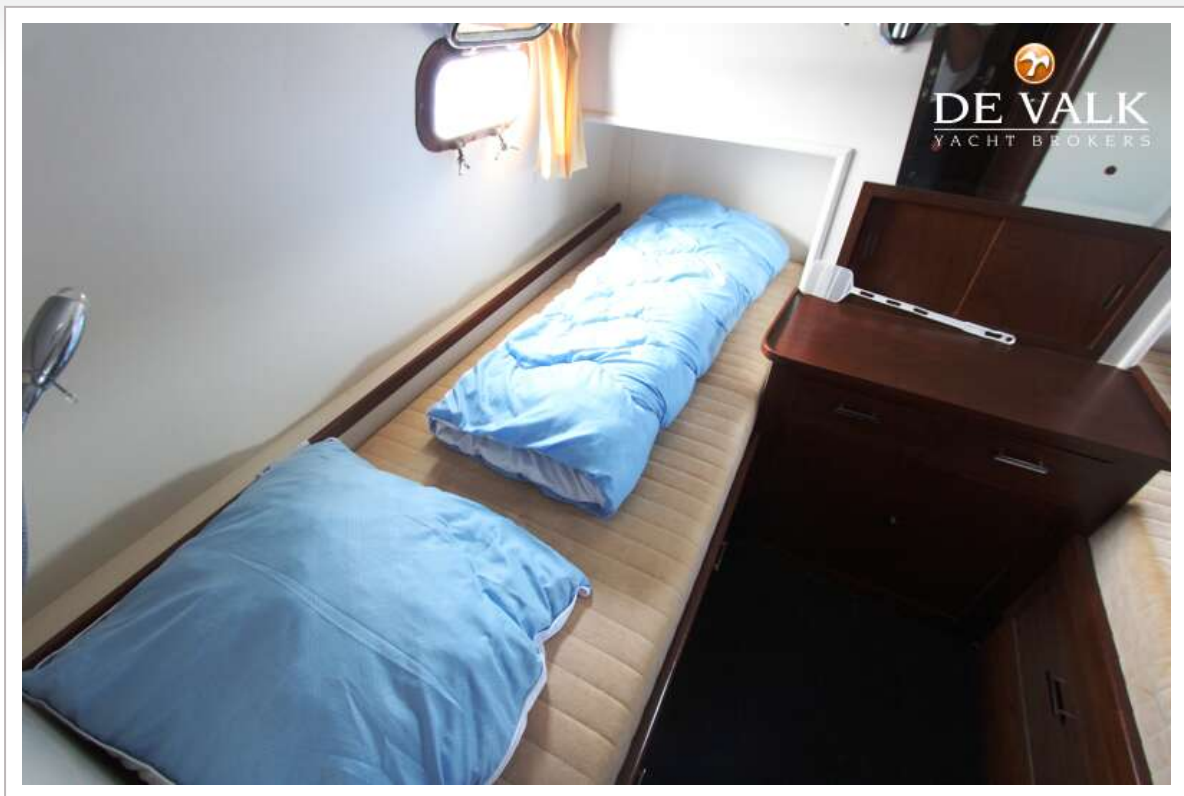




# SUPER VAN CRAFT 1140



# SUPER VAN CRAFT 1140



# SUPER VAN CRAFT 1140





