



DE VALK  
YACHT BROKERS



## BAVARIA 42 OCEAN



DE VALK  
YACHT BROKERS

# BAVARIA 42 OCEAN

## BROKER'S COMMENTS

The Bavaria 42 ocean is a modern family cruisingyacht with good accommodations below decks. The centrecockpit design provides for an excellent ownerscabin aft with good headroom throughout and ample stowage space. This Bavaria 42 Ocean is kept in a good condition by her first and second owner and with modern sails and lots of other renewings she is ready for a new adventure!

*Jan-Ward van Dantzig*

## SPECIFICATIONS

<b>Dimensions</b>	12.98 x 3.98 x 1.95 (m)	<b>Builder</b>	Bavaria Yachtbau GmbH
<b>Built</b>	2001	<b>Cabins</b>	2
<b>Material</b>	GRP	<b>Berths</b>	6
<b>Engine(s)</b>	1 x Volvo Penta MD 22P diesel	<b>Hp/Kw</b>	59.00 (hp), 43.42 (kw)
<b>Asking price</b>	sold (VAT )	<b>Lying</b>	at sales office

## CONTACT

<b>Sales office</b>	De Valk Sint Annaland B.V.	<b>Telephone</b>	+31 (0)166 601 000
<b>Address</b>	Koelhuisweg 4 4697 RM Sint Annaland NL	<b>E-mail</b>	sintannaland@devalk.nl

## DISCLAIMER

These particulars are given in good faith as supplied but cannot be guaranteed.



# BAVARIA 42 OCEAN

## GENERAL

Model	BAVARIA 42 OCEAN
Type	sailing yacht
LOA (m)	12,98
LWL (m)	11,15
Beam (m)	3,98
Draft (m)	1,95
Air draft (m)	18,50
Headroom (m)	1,90
Year built	2001
Builder	Bavaria Yachtbau GmbH
Country	Germany
Designer	J & J Design
Displacement (t)	9,7
Ballast (tonnes)	lead 3,6
CE norm	A
Hull material	GRP
Hull colour	white
Hull shape	round-bilged
Keel type	fin keel Cast Iron
Superstructure material	GRP
Rubbing strake	stainless steel On teak (New black caulking in 2021)
Deck material	GRP
Deck finish	non-skid moulded in
Superstructure deck finish	non-skid moulded in
Cockpit deck finish	teak
Antifouling (year)	2022
Dorades	1 x plastic
Window frame	aluminium
Window material	perspex
Deckhatch	4 x Gebo (1 x mosquito screen in aft cabin, 1 x in saloon)



<b>Portholes</b>	aluminium Rutgeron (1 x with mosquito screen in galley)
<b>Insulation</b>	foam
<b>Fuel tank (litre)</b>	polyethylene 225
<b>Level indicator (fuel tank)</b>	yes
<b>Freshwater tank (litre)</b>	polyethylene 1 x 230 + 1 x 150
<b>Level indicator (freshwater)</b>	yes
<b>Blackwater tank (litre)</b>	polyethylene 60
<b>Level indicator (blackwater)</b>	Tankwatch 4
<b>Blackwater tank extraction</b>	deck extraction + pump (electric pump)
<b>Wheel steering</b>	mechanical Lewmar pedestal with a stainless steel wheel, leather covered
<b>Emergency tiller</b>	yes
<b>Extra info</b>	Stainless steel clamps, also amidships
<b>Extra info</b>	The hoses in the aft bathroom will be replaced next week
<b>Extra info</b>	The rubber sealing will be replaced from 2 portholes (next week)

## ACCOMMODATION

<b>Cabins</b>	2
<b>Berths</b>	6
<b>Interior</b>	mahogany With Kerpen Blue upholstery
<b>Floor</b>	woodprint Plastic "teak and holly"
<b>Headroom saloon (m)</b>	1,92
<b>Heating</b>	diesel ducted hot air Webasto Airtop 5000 with a timer thermostat
<b>Navigation center</b>	yes
<b>Chart table</b>	On starboard side
<b>Aft Cabin</b>	yes
<b>Dinette</b>	yes
<b>Galley</b>	On port side (Headroom: 1,82 - 1,88 m)
<b>Countertop</b>	plastic White
<b>Sink</b>	stainless steel 2 x
<b>Cooker</b>	calor gas Eno 2 burner (New in 2021)



# BAVARIA 42 OCEAN

Oven	Eno (New in 2021)
Fridge	Top loader with a compressor
Hot water system	220V + engine 40 liter Isotherm boiler
Water pressure system	electrical ParMax 4 pump with a TriStar carbon filter and Salmonella filter
Crockery	Several plastic plates, glasses and cups
Owners cabin	French bed (in the aft cabin)
Bed length (m)	2,10 x 1,60 (Headroom: 1,85 m)
Wardrobe	hanging and shelves
Bathroom	en suite
Toilet	en suite (Headroom: 1,82 m)
Toilet system	manual Jabsco
Wash basin	in the bathroom
Shower	en suite (Headroom: 1,90 m)
Guest cabin 1	v-bed (in the front cabin)
Bed length (m)	2,05 x 1,70 (Headroom: 1,93 m)
Wardrobe	hanging and shelves
Bathroom	en suite (Headroom: 1,90 m)
Toilet	en suite
Toilet system	electric Sealand Dometic VacuFlush (Vacuum)
Wash basin	in the bathroom
Extra info	Slatts under the mattresses in the front and the aft cabin.
Extra info	90% of the interior lights is in LED.

## MACHINERY

No of engines	1
Make	Volvo Penta
Type	MD 22P
HP	59
kW	43.42
Fuel	diesel



# BAVARIA 42 OCEAN

Year installed	2001
Maximum speed (kn)	7
Cruising speed (kn)	6
Consumption (l/hr)	3,5
Engine hours	935
Engine cooling system	freshwater heat exchanger
Drive	sail-drive
Saildrive seal	(New in 2016)
Engine controls	bowden cable
Gearbox	mechanical
Bowthruster	electric SidePower SP 95 Ti
Propeller type	feathering Volvo Penta
Propeller blades	3
Manual bilge pump	yes
Electric bilge pump	yes
Electrical installation	12V / 220V
Start battery	1 x Volvo 80 AH
Service battery	2 x Semi Traction 230 AH (New in 2018)
Bowthruster battery	2 x Calcium - maintenance free 74 AH (New in 2022)
Battery monitor	Mastervolt Power System Control Panel
Battery charger	Mastervolt Ivo Smart 12 / 40-3
Inverter	Victron Phoenix
Shorepower	with cable
Insulation transformer	Mastervolt
Extra info	Last engine service in spring 2022

## NAVIGATION

Compass	Plastimo Olympic 135 (New in 2022)
Depth sounder	Raymarine i70 (New in 2022)
Log	Raymarine i70 (New in 2022)
Windset	Raymarine i70 (New in 2022)



VHF	Raymarine Ray 55E with cockpit connection and handset
Autopilot	Raymarine ST 6000
Rudder angle indicator	Via the autopilot
GPS	Furuno GP-32
AIS receiver	(if connection changed, it can be used as a tranceiver)
Navigation lights	yes
Extra info	Back-Bone for Raymarine instruments (New in 2022)

## EQUIPMENT

Fixed windscreen	(centre window can be opened)
Sprayhood with grab rail	De Vries (2016) sprayhood with SS grab rail (leather covered)
Cockpit cover	De Vries (2016) and old cover (can be used during winter)
Sun awning	(2020)
Cockpit table	Teak (removable and turnable)
Bathing platform	Covered with teak
Boarding ladder	stainless steel
Anchor	Bruce
Anchor chain	50 Meter
Windlass	electrical Lofrance Tigres
Outboard support	yes
Sea railing	wire Double
Grab rail (superstructure)	stainless steel
Railing side opening gates	On both sides
Pushpit	Stainless steel
Pulpit	Stainless steel
Life raft	yes
Life raft (pers)	valise (or bag) 4 persons - Seago Cruiser (New in 2018)
Last life raft survey	Needs to be surveyed for the first time
Lifebuoy	yes
Radar reflector	yes
Fenders	yes



Mooring lines	yes
Spare parts	For the engine (impellor, belt, filter)
Radio-cd player	Blaupunkt
Speakers in salon	yes
Fire extinguisher	7 x
Latest extinguisher survey	11-2018
Extra info	2 x Plastic seat on the pushpit.
Extra info	Stainless steel cleats (also amidships).
Extra info	The front waste water tank sea cock needs to be replaced.

## RIGGING

Rigging	fractional 7/8
Standing rigging	wire
Brand mast	Seldén
Material mast	aluminium
Spreaders	2 x double set
Mainsail cover	Off White (New in 2019)
Fully battened mainsail	De Vries DXC laminate-M/DCX-H Quality Tri Radial (New in 2017)
Genoa	De Vries DXC laminate Tri Radial (New in 2020)
Genoa furler	Furlex 300S
Reefing System	quick-one-line-reefing
Backstay adjuster	mechanical Selden Hasselfors
Boomvang	gasspring Selden Rodkicker
Genoa sheetwinches	2 x Harken 48 ST (electric)
Halyard winches	2 x Lewmar 40 ST (New in 2022)
Extra info	4x Harken winch handle (2x New in 2022), 2x Lewmar winch handle.
Extra info	2 x Folding plastic mast-step.





# BAVARIA 42 OCEAN





# BAVARIA 42 OCEAN





# BAVARIA 42 OCEAN



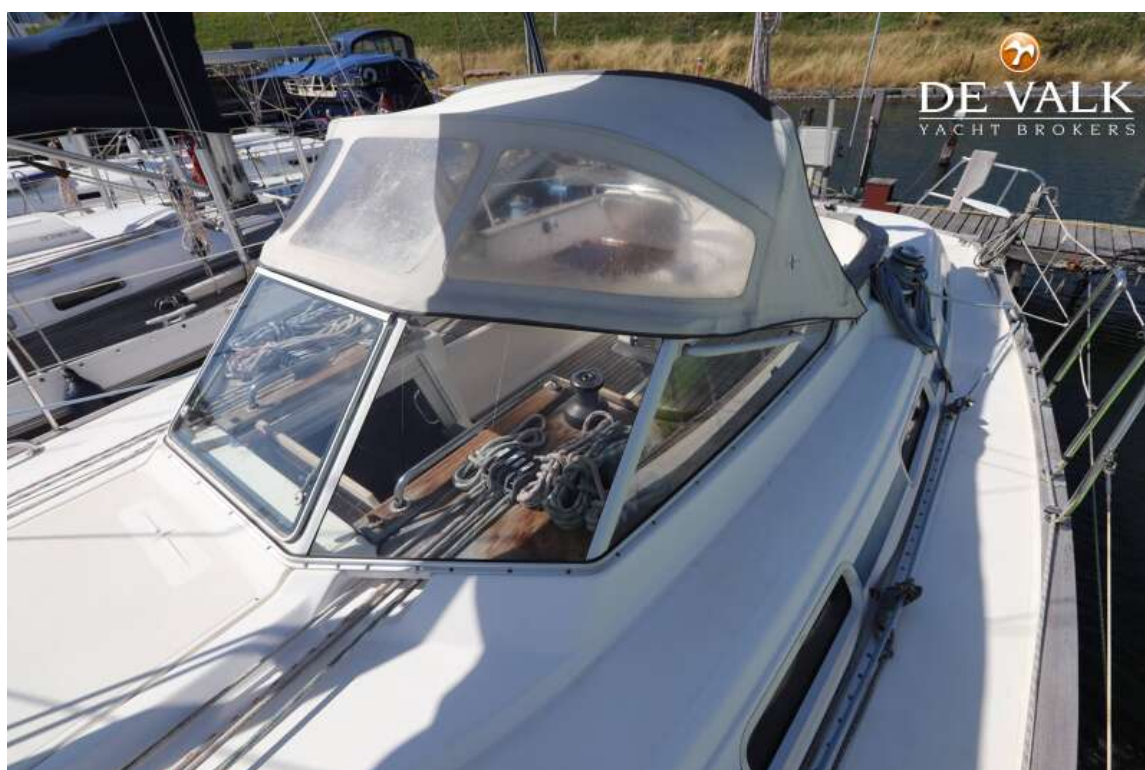


# BAVARIA 42 OCEAN





# BAVARIA 42 OCEAN

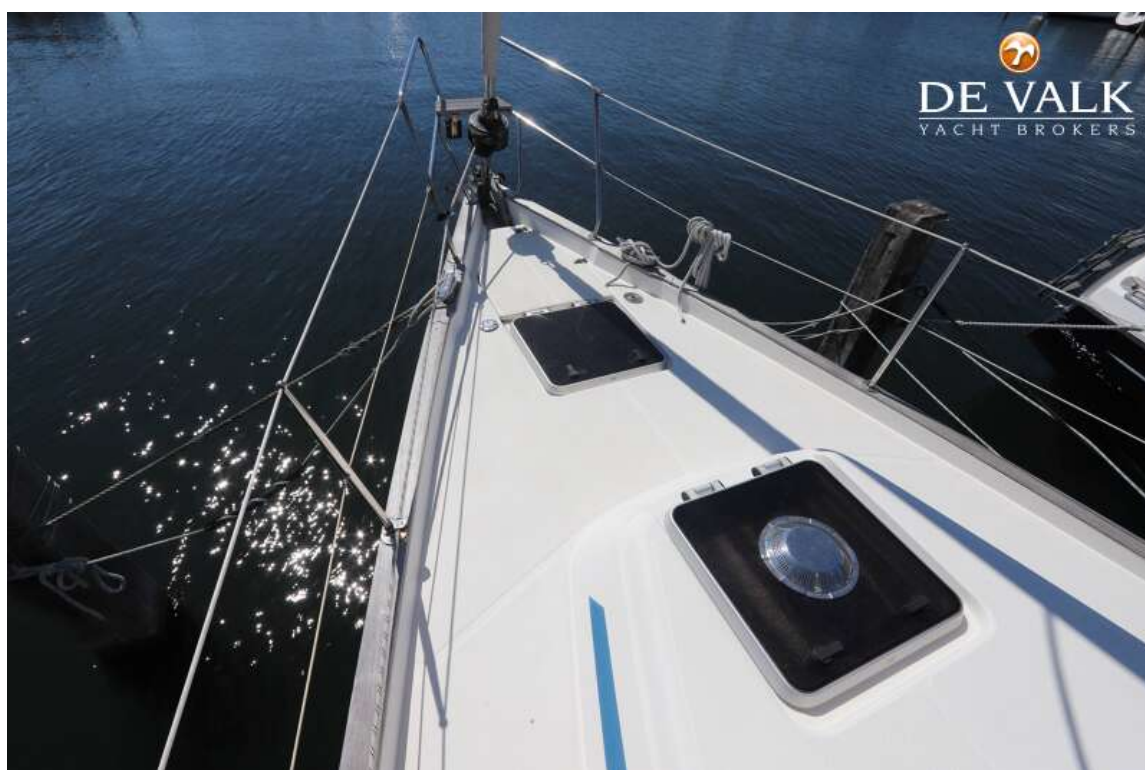


# BAVARIA 42 OCEAN





# BAVARIA 42 OCEAN



# BAVARIA 42 OCEAN

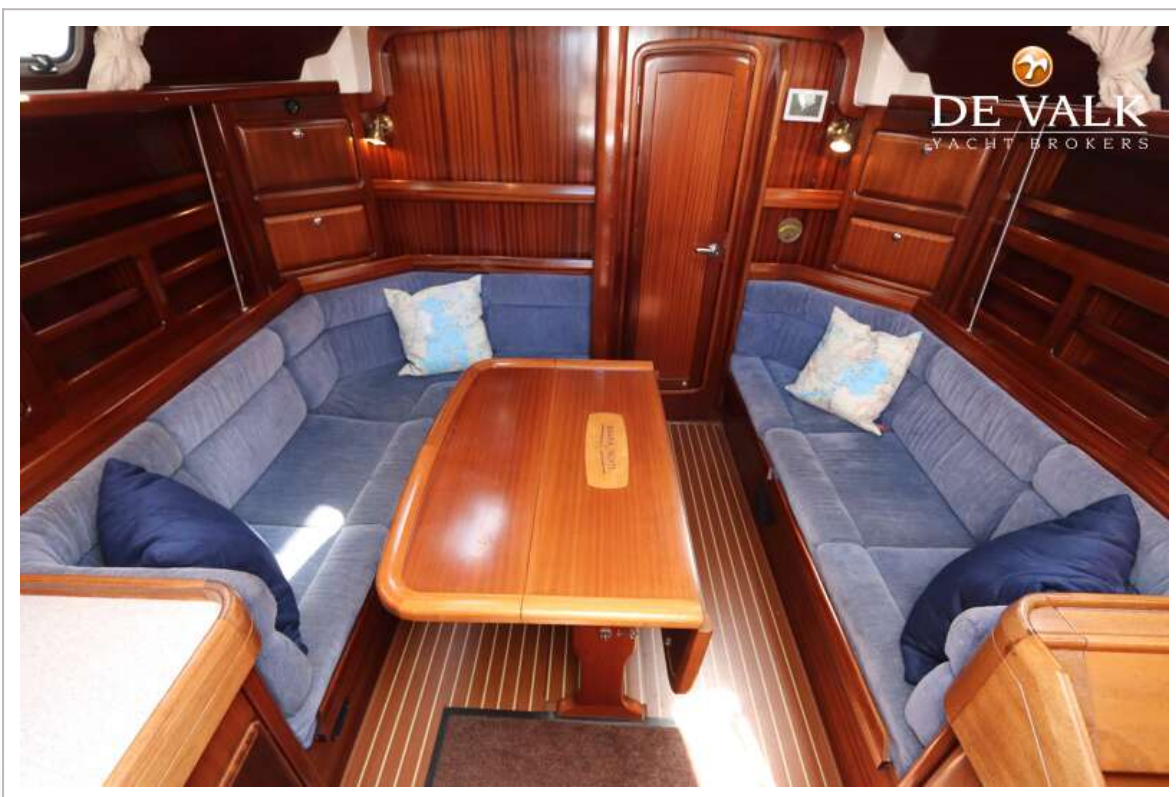




# BAVARIA 42 OCEAN



# BAVARIA 42 OCEAN

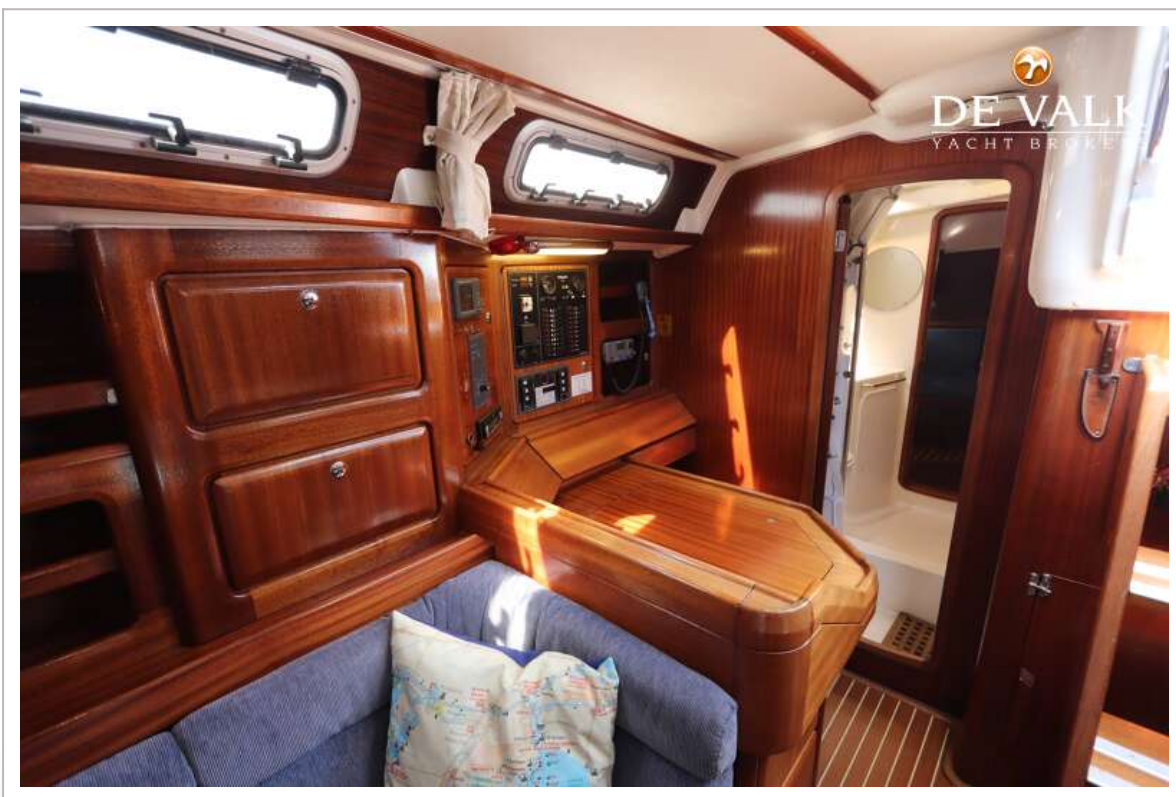
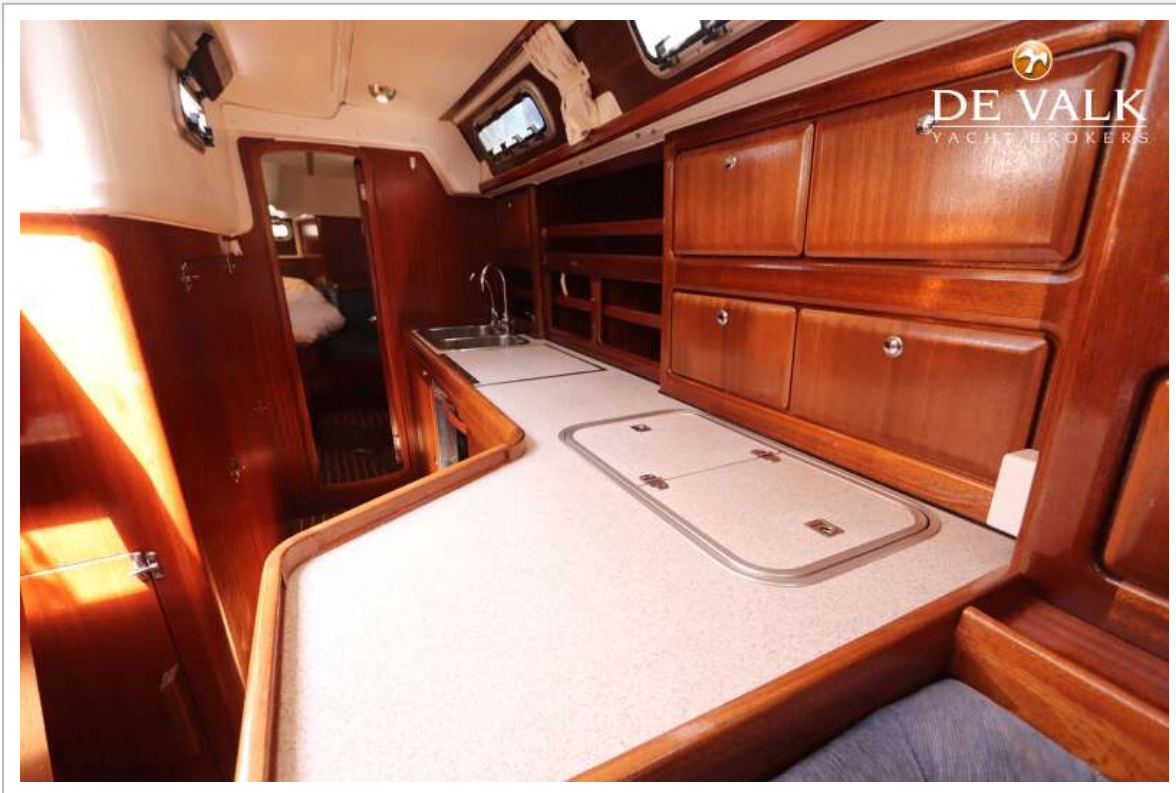




# BAVARIA 42 OCEAN

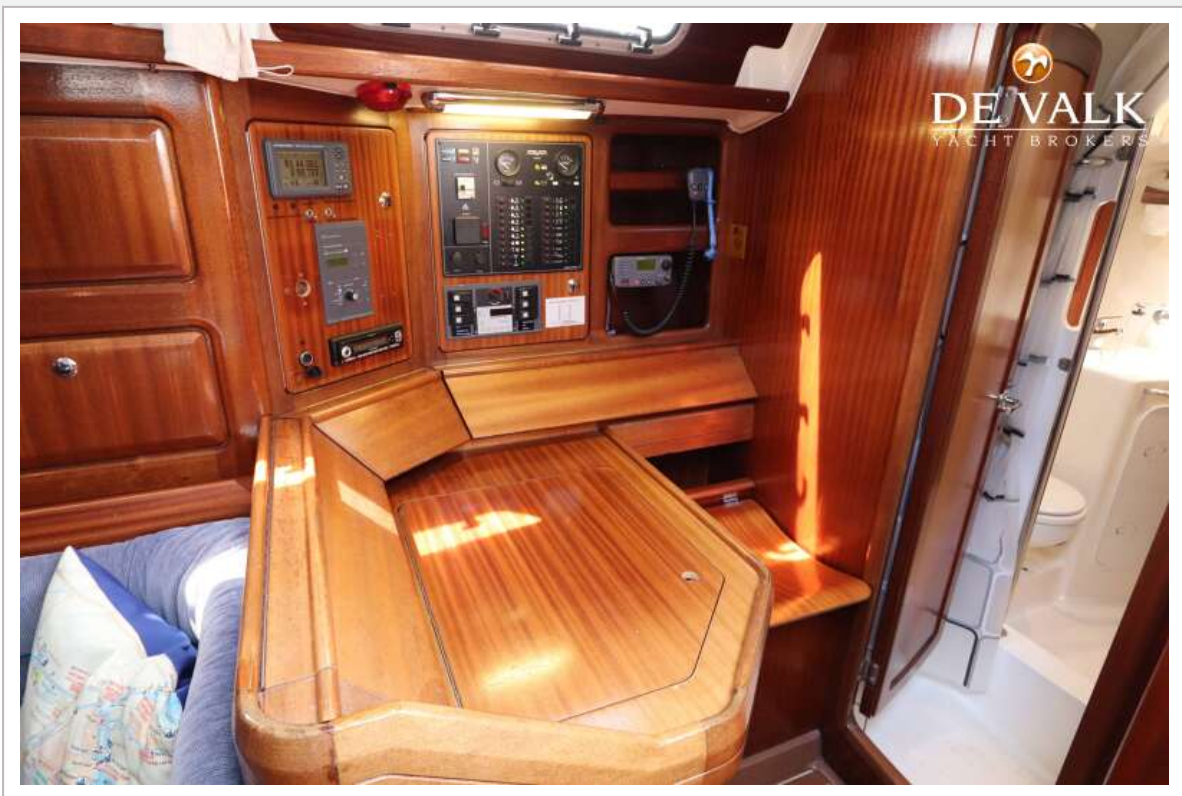


# BAVARIA 42 OCEAN





# BAVARIA 42 OCEAN



# BAVARIA 42 OCEAN





# BAVARIA 42 OCEAN

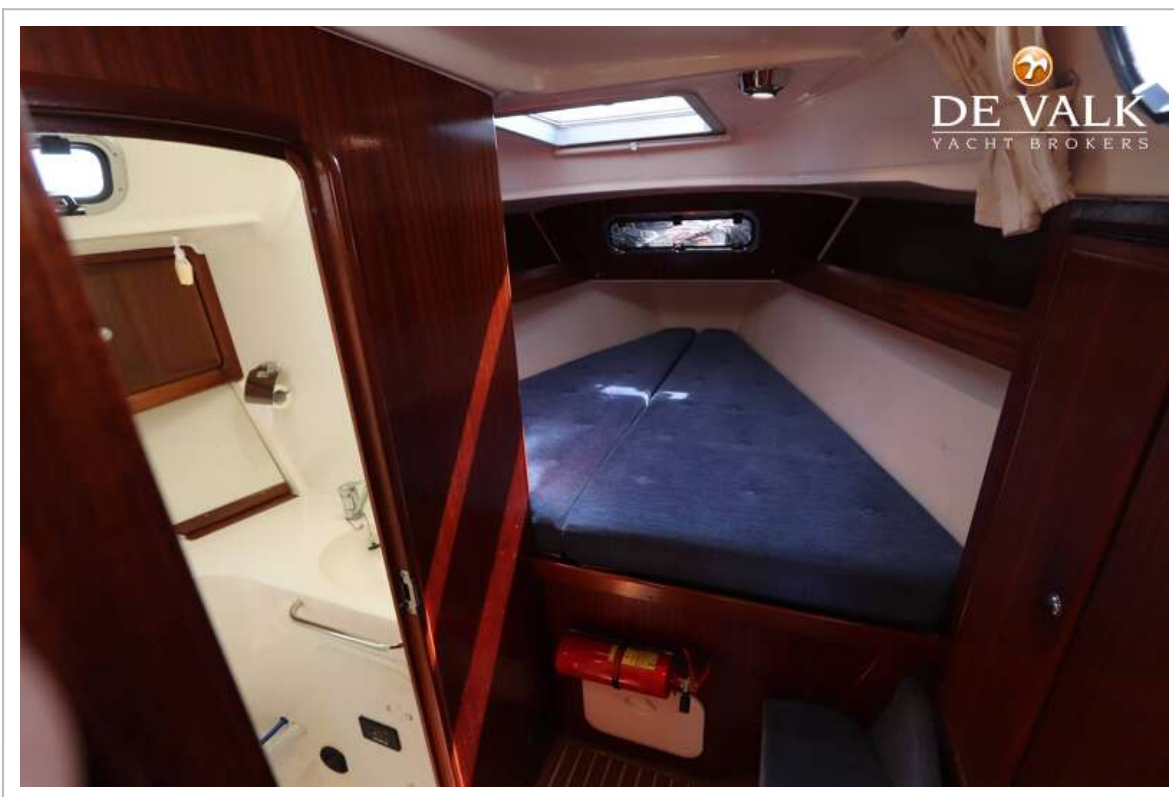


# BAVARIA 42 OCEAN





# BAVARIA 42 OCEAN

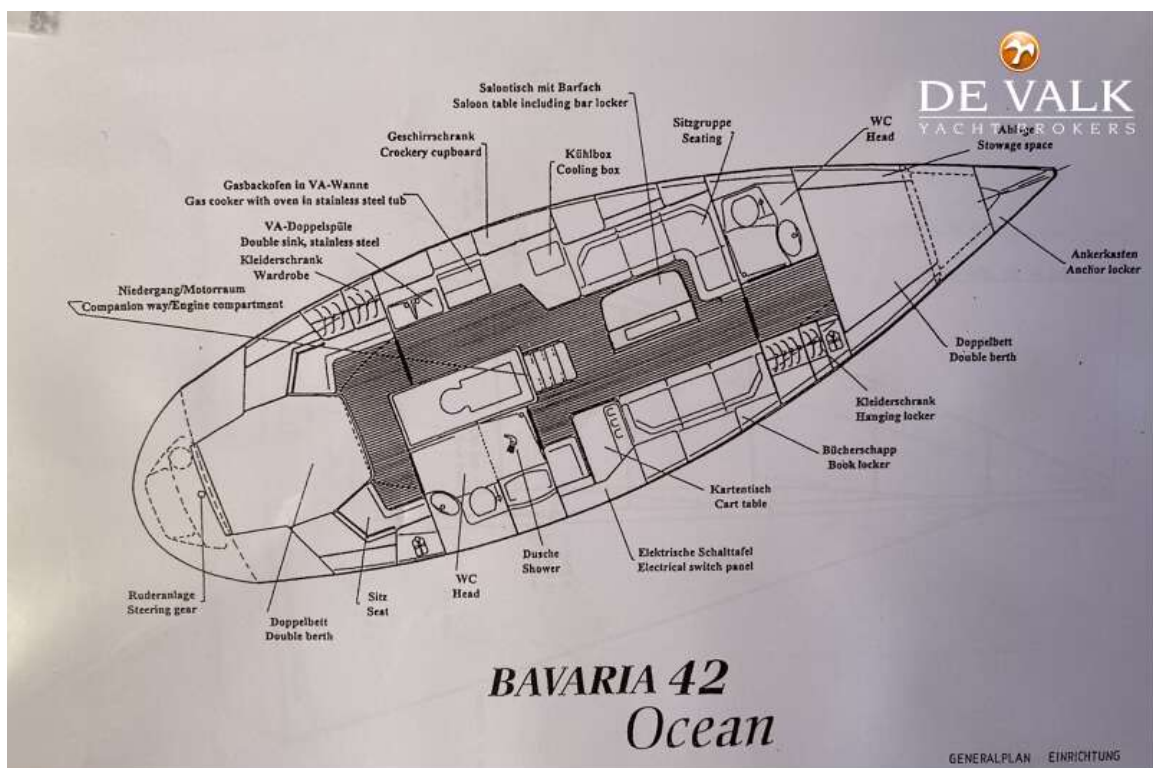


# BAVARIA 42 OCEAN

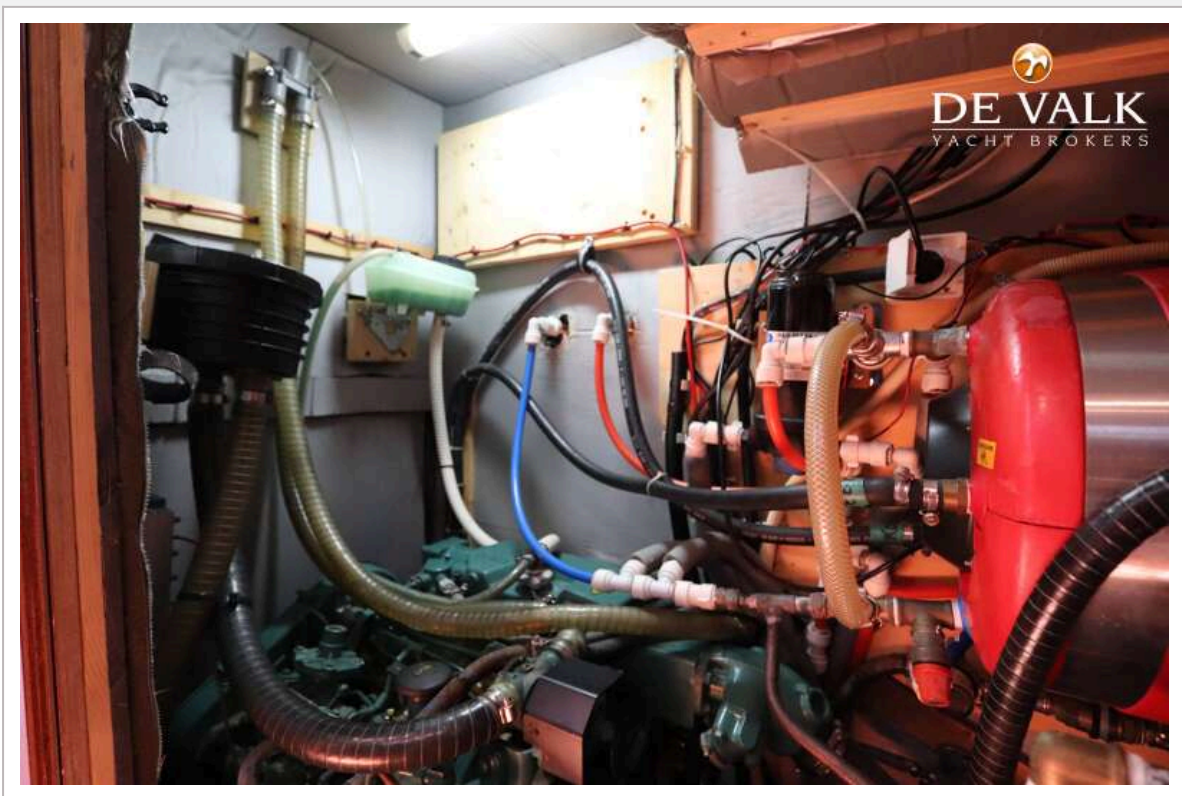




# BAVARIA 42 OCEAN

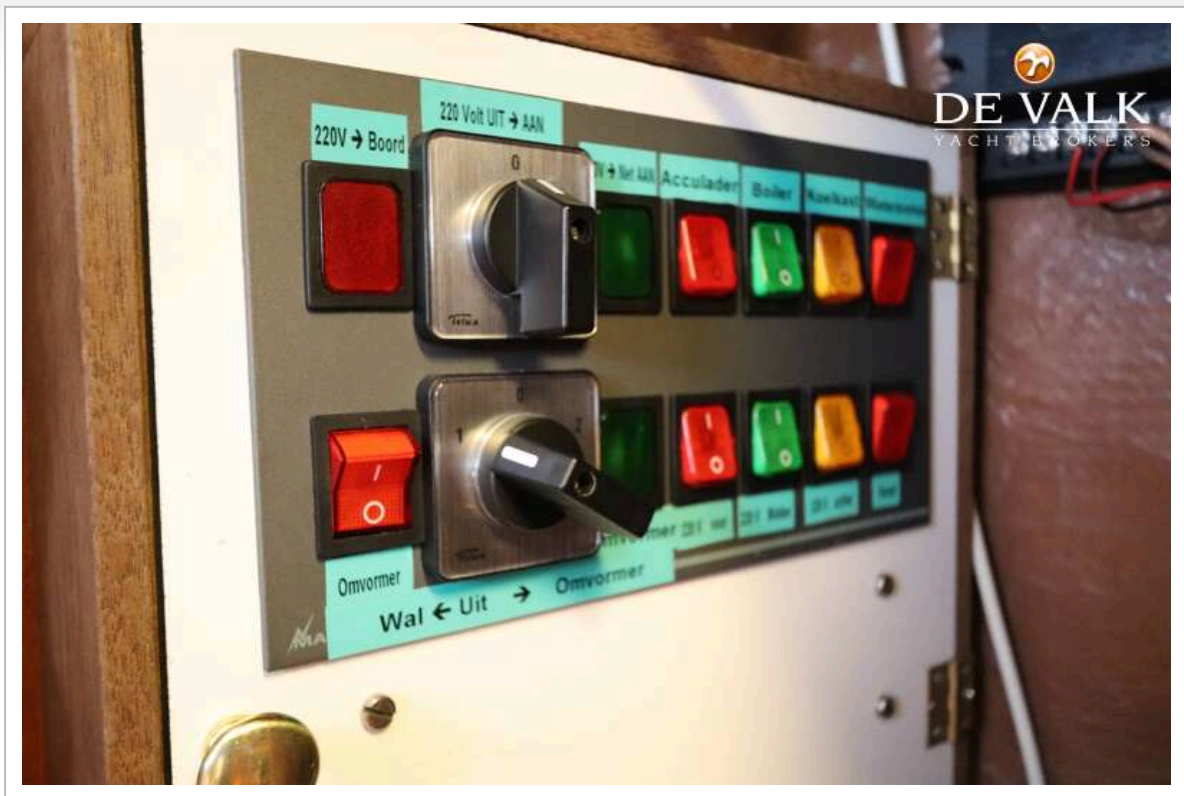


# BAVARIA 42 OCEAN





# BAVARIA 42 OCEAN



# BAVARIA 42 OCEAN

