



CLIPPER KETCH

BROKER'S COMMENTS

A beautifully lined, traditional flat bottomed Ketch that was built in 1910 as cargo ship for inland and shallow coastal waters. In 1970 she was converted into a charter ship with 7 cabins for 16 passengers. Midships there is a very cosy saloon with galley/bar, comfortably seating 30 people. A deckhouse functions as captains cabin with seperate small toilet and shower space. Perfect for group daytrips along the Tagus river. She just passed her annual inspection as passenger boat but the mast are due for replacement. That is why the asking price has been lowered to € 100k "as is and where is".

Reinoud Bicker Caarten

SPECIFICATIONS

Dimensions	29.00 x 5.20 x 1.10 (m)	Builder	Paans, Roodevaart
Built	1910	Cabins	8
Material	Steel	Berths	18
Engine(s)	1 x DAF DD 575 diesel	Hp/Kw	120.00 (hp), 88.32 (kw)
Asking price	sold (VAT)	Lying	at sales office

CONTACT

Sales office	De Valk Portugal	Telephone	+351 308 812321
Address	Edifício Administrativo - Ponta da Areia 8500 - 345 Portimão PT	E-mail	portugal@devalk.nl

DISCLAIMER

These particulars are given in good faith as supplied but cannot be guaranteed.



CLIPPER KETCH

GENERAL

Model	CLIPPER KETCH
Type	sailing yacht
LOA (m)	29,00
LWL (m)	24,55
Beam (m)	5,20
Draft (m)	1,10
Air draft (m)	22,00
Headroom (m)	2,20
Year built	1910
Builder	Paans, Roodevaart
Country	The Netherlands
Displacement (t)	32
CE norm	B
Hull material	steel
Hull colour	white
Hull thickness (mm)	4 - 8mm
Hull shape	flat bottom
Keel type	Leeboards
Superstructure material	steel
Rubbing strake	steel
Deck material	steel
Deck finish	non-skid paint
Superstructure deck finish	non-skid paint
Cockpit deck finish	non-skid paint
Antifouling (year)	July 2022
Window frame	steel
Window material	tempered glass
Deckhatch	fixed windows in saloon ceiling
Insulation	Entire hull
Fuel tank (litre)	steel 400L



CLIPPER KETCH

Fuel tank 2 (litre)	steel 400L
Level indicator (fuel tank)	yes
Freshwater tank (litre)	steel 2x 2000L
Level indicator (freshwater)	yes
Blackwater tank extraction	Fecomat grinder pump
Wheel steering	hydraulic
Outside helm position	yes
Emergency tiller	yes
More info on hull	Scraped clean and re-painted above waterline 2022

ACCOMMODATION

Cabins	8
Berths	18
Interior	Elmwood
Layout	captains cabin in deckhouse aft, passenger saloon with galley and 2 cabins midships, forward 4 x 2 pax cabins and 1 4 pax cabin, crew cabin in bow.
Floor	wood
Pilot house/deck saloon	Captains cabin aft
Saloon	Large
Heating	central heating Pallas 19kW with Riello burner
Navigation center	In captains cabin
Chart table	yes
Aft Cabin	yes
Dining room	In Saloon
Galley	In Saloon
Countertop	wood
Sink	stainless steel
Cooker	calor gas 4 burner stove
Oven	yes
Fridge	Large standing 2 door model, part fridge 1part freezer
Freezer	yes



CLIPPER KETCH

Hot water system	On central heating boiler
Water pressure system	yes
Manual and/or foot pump	yes
Hot water tap	Quooker
Crockery	yes
Owners cabin	double bed
Bed length (m)	2m
Wardrobe	drawers and shelves
Toilet	separate In small space
Toilet system	manual
Wash basin	in the bathroom
Guest cabin 1	bunk bed 6 guest cabins with 2 bunk beds
Bed length (m)	2m
Bathroom	separate 2 bathrooms (men/women)
Toilet	separate In bathrooms
Toilet system	Fecomat grinder pump
Wash basin	In all guest cabins and both bathrooms
Shower	separate In both bathrooms
Crew cabin(s)	In bow with 1 bunkbed in use as storage space

MACHINERY

No of engines	1
Make	DAF
Type	DD 575
HP	120
kW	88.32
Fuel	diesel
Year installed	1970
Year of overhaul	2010
Maximum speed (kn)	7
Cruising speed (kn)	6



Engine cooling system	freshwater heat exchanger
Drive	shaft
Engine controls	bowden cable
Gearbox	hydraulic PRM 750D with Python drive
Propeller type	fixed
Propeller blades	4 bronze
Propeller shaft material	stainless steel
Shaft lubrication	water
Electrical installation	24V/220V
Generator	Ruggerini 2cylinder 6kVA, installed 2003
Batteries	6x Kaise KBGS122500 12V 250Amp Gel Solar
Battery charger/inverter	Victron combi 24V/50Ah
Shorepower	with cable

NAVIGATION

Compass	yes
VHF	2x i com
GPS	MLR gps
AIS receiver	yes
Navigation lights	yes

EQUIPMENT

Gangway	yes
Anchor	yes
Anchor chain	yes
Anchor 2	yes
Anchor chain	yes
Windlass	manual 2x chain wheel
Life raft	container 1x 30 pax and 1x 8 pax
Last life raft survey	2022
Lifejackets	40



Horn	yes
Fenders	10+
Mooring lines	Many
Spare parts	yes
Tools	yes
Speakers in salon	2 big Portable speakers for use inside and outside
Fire extinguisher	6
Latest extinguisher survey	2022
Extinguisher in engine room	2

RIGGING

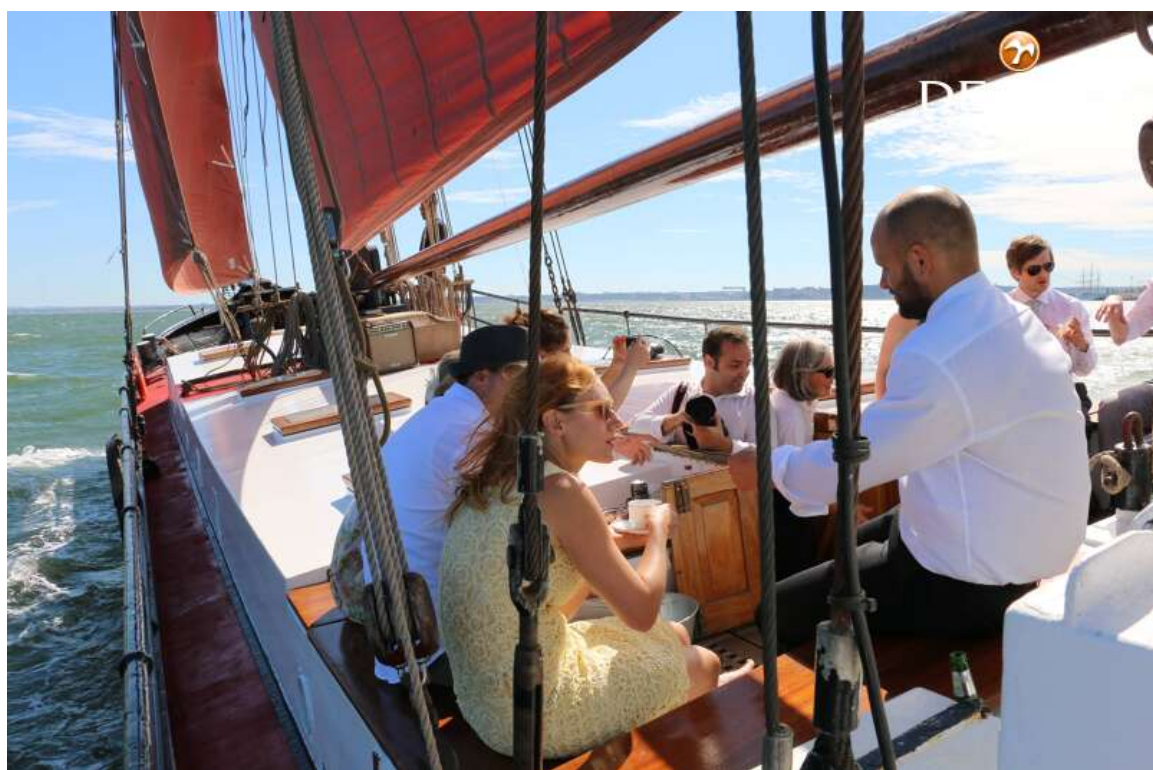
Rigging	ketch
Standing rigging	wire
Material mast	wood Needs service
Mainsail	100m2 de Vries
Mainsail cover	All sails with custom made hoods
Mizzen	50m2 de Vries
Mizzen sailcover	Yes
Jib	50m2 de Vries
Jib I	Outer Jib 45m2 de Vries
Reefing System	slabreefing
Boomvang	tackle
Multifunctional winches	2 large manual winches for Leeboards



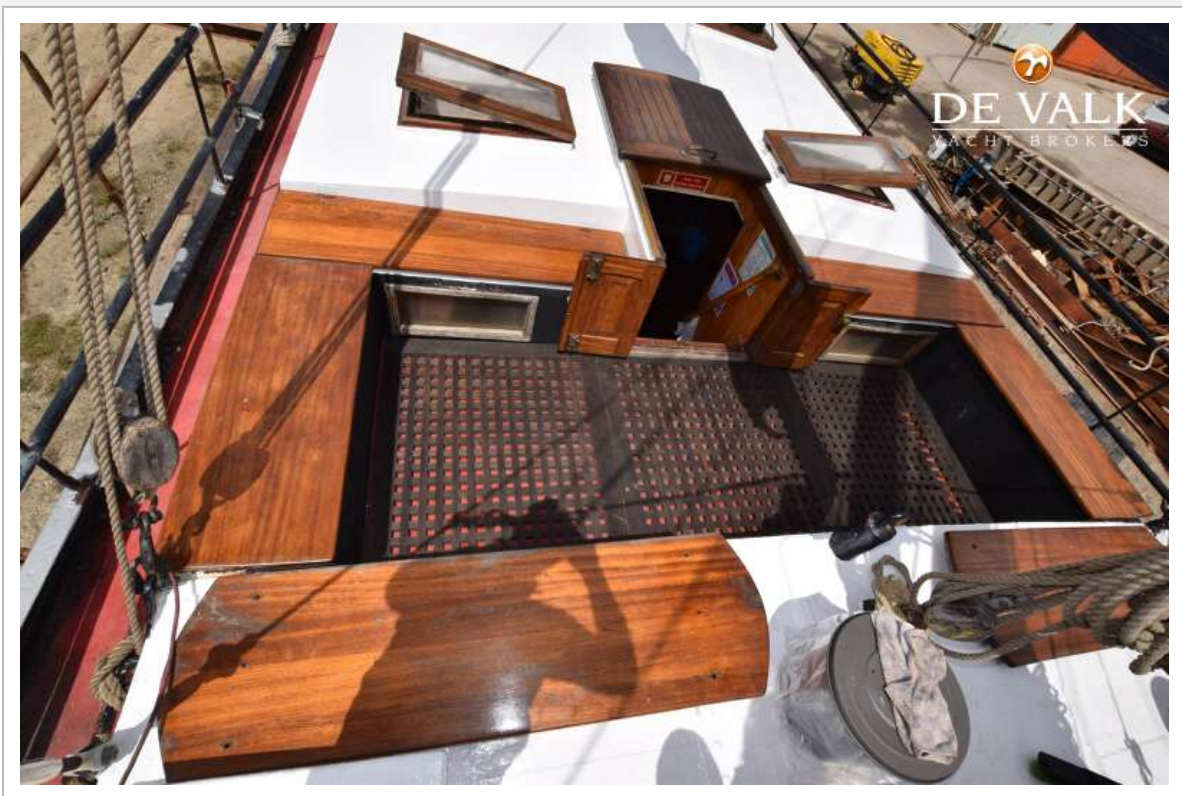
CLIPPER KETCH



CLIPPER KETCH



CLIPPER KETCH



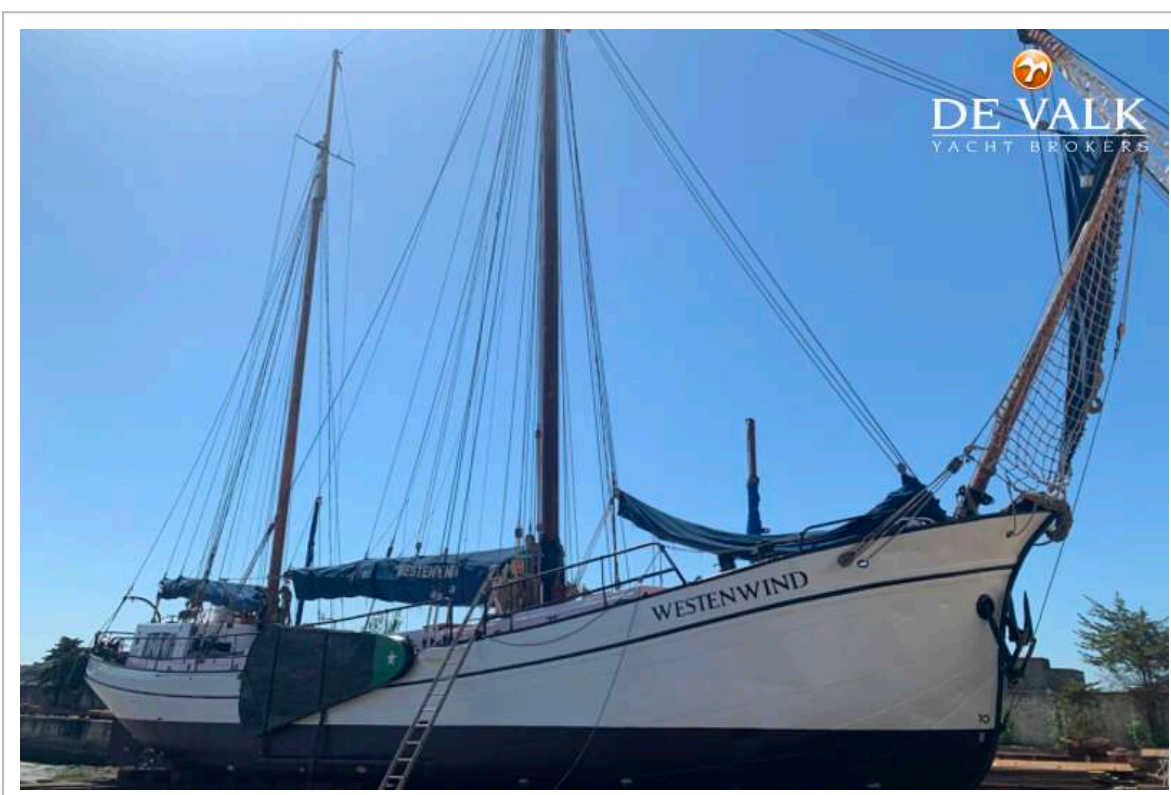
CLIPPER KETCH



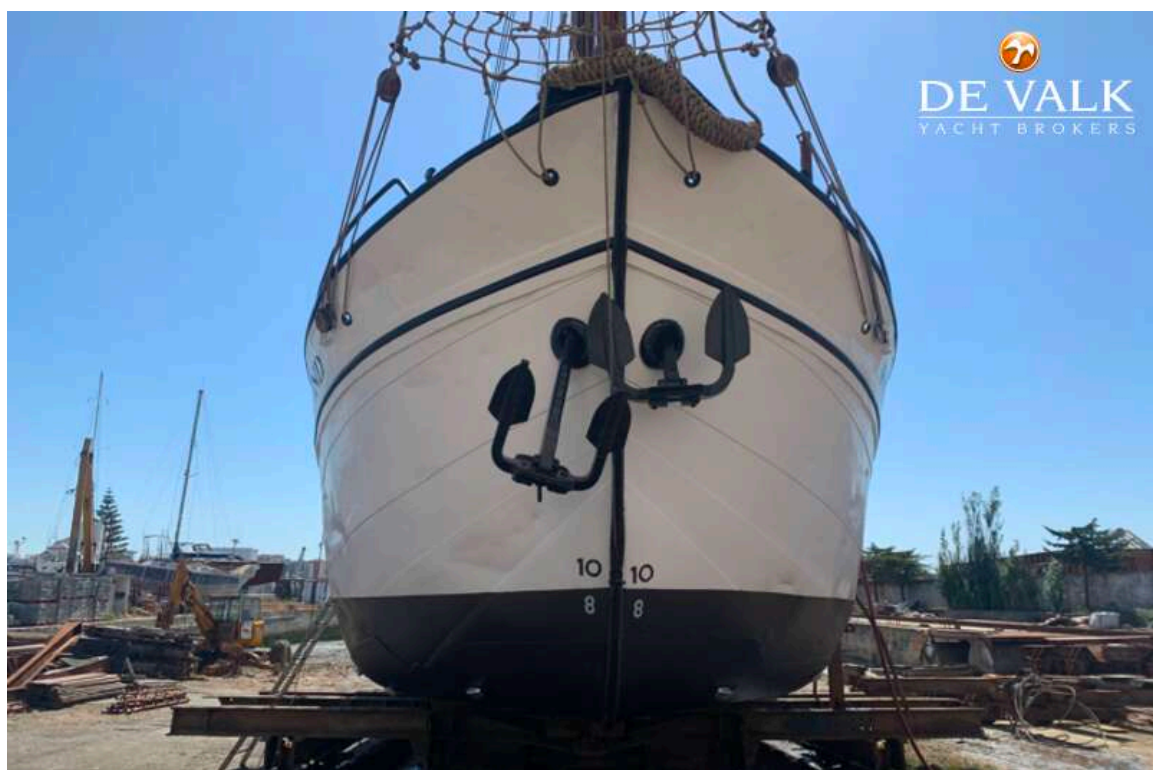
CLIPPER KETCH



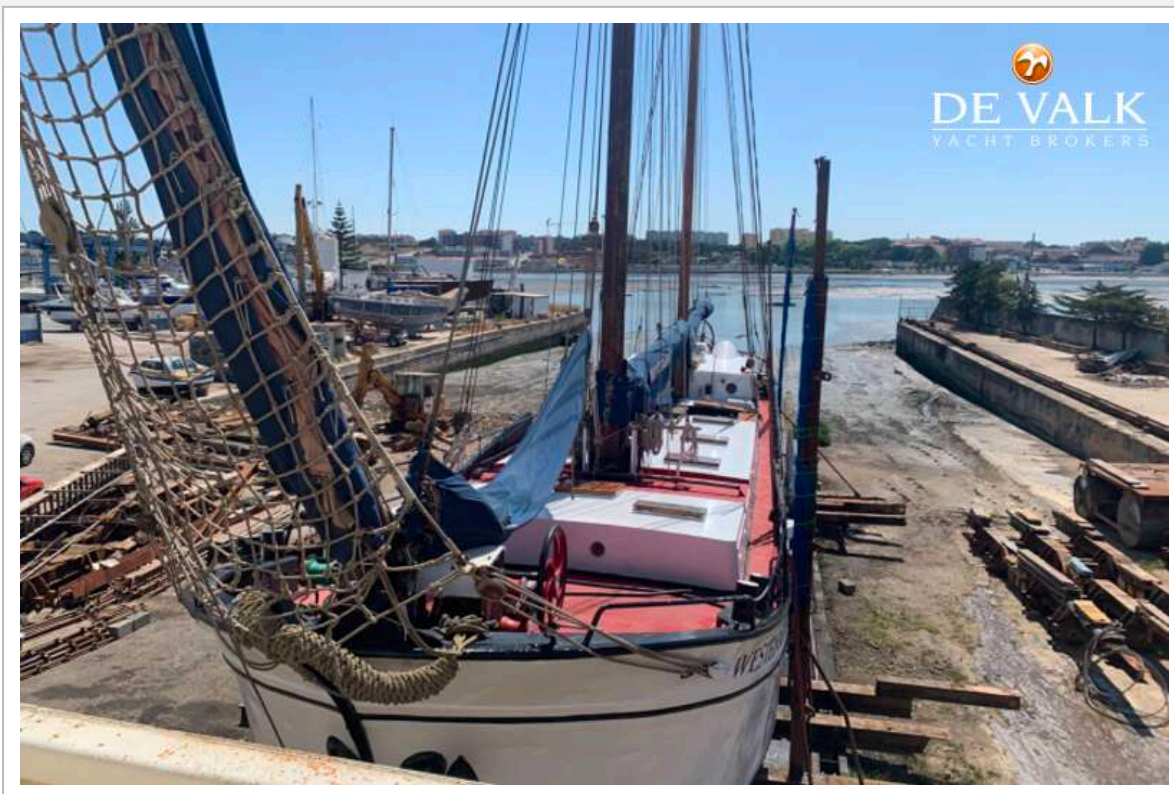
CLIPPER KETCH



CLIPPER KETCH



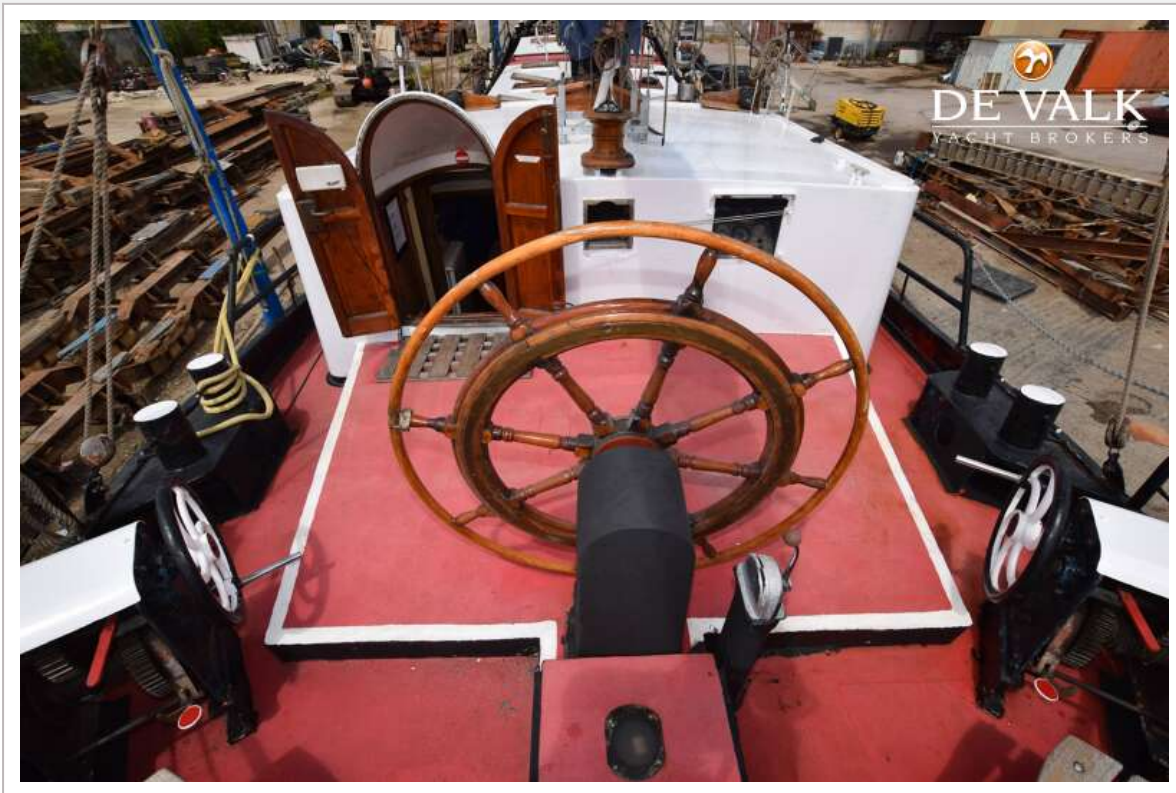
CLIPPER KETCH



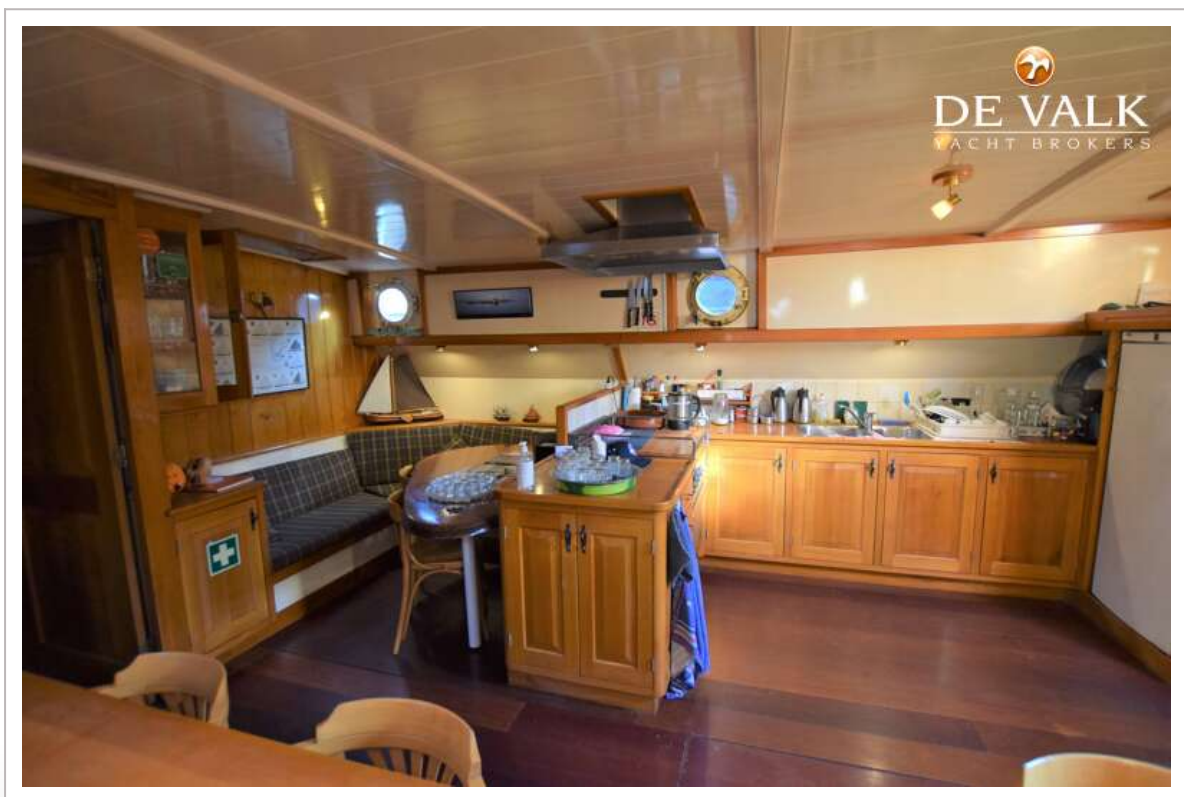
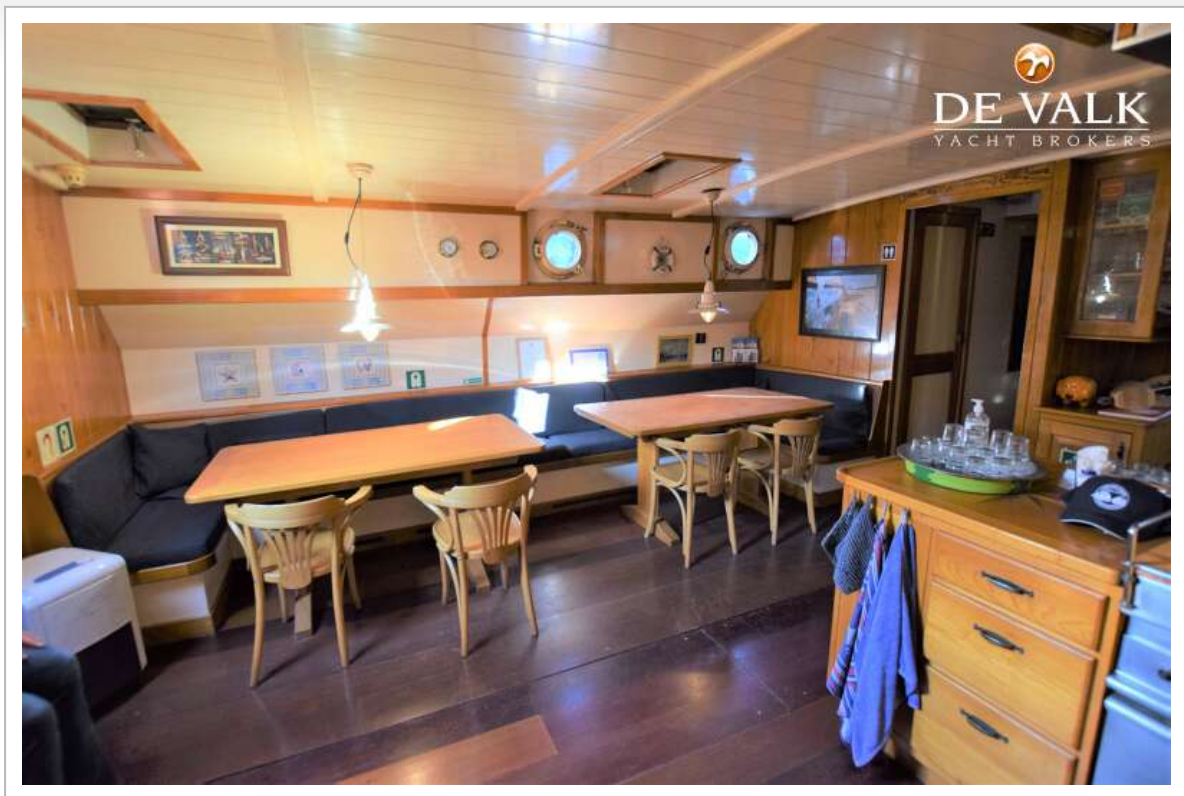
CLIPPER KETCH



CLIPPER KETCH



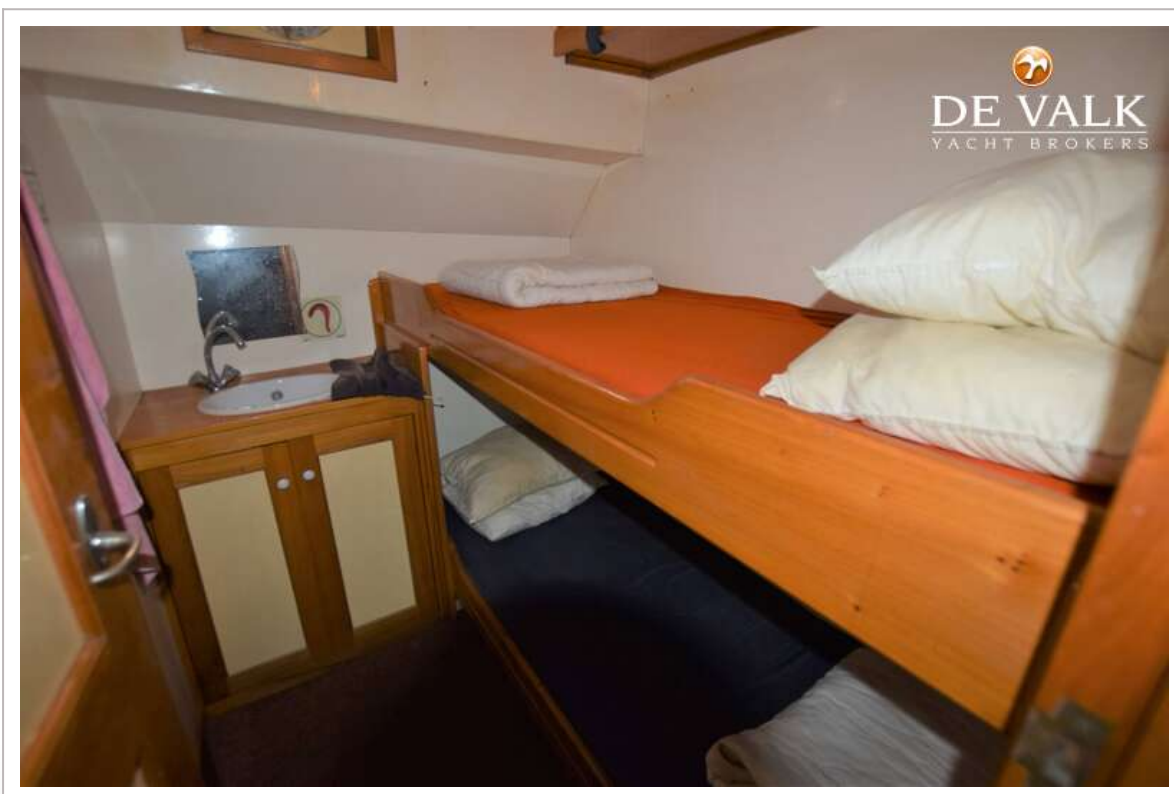
CLIPPER KETCH



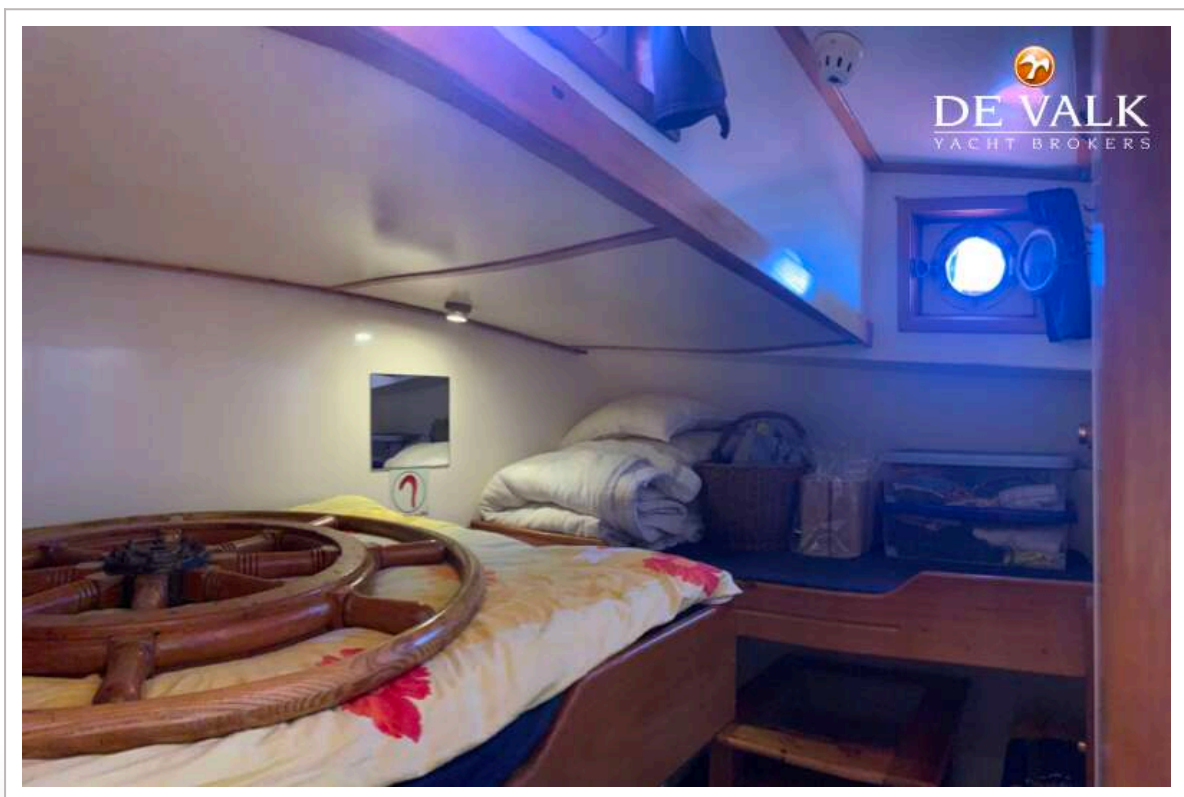
CLIPPER KETCH



CLIPPER KETCH



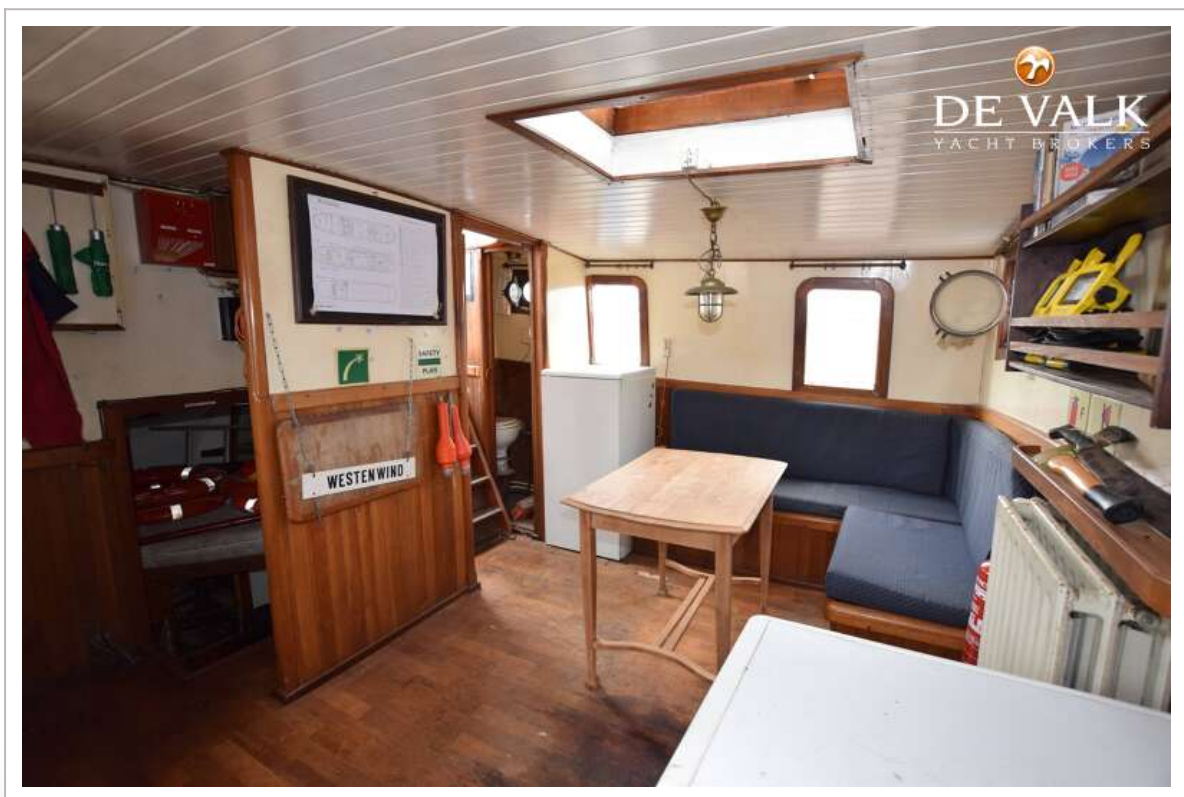
CLIPPER KETCH



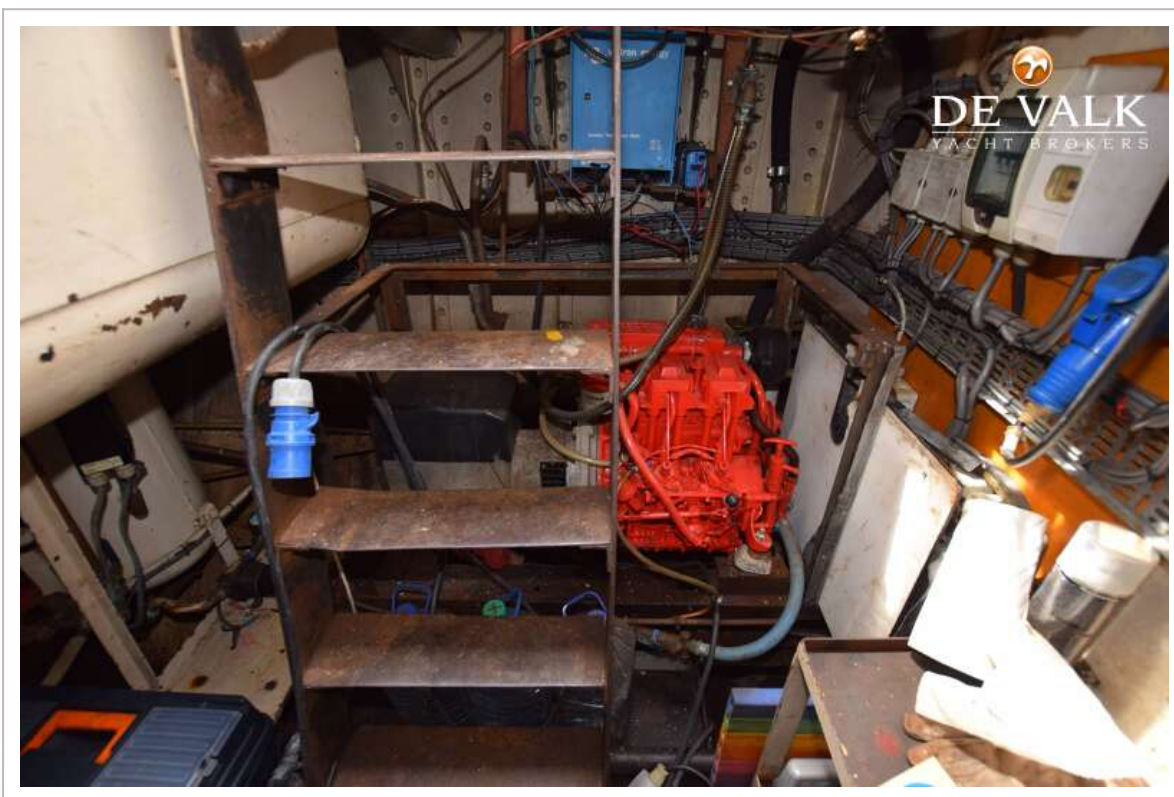
CLIPPER KETCH



CLIPPER KETCH



CLIPPER KETCH



CLIPPER KETCH



CLIPPER KETCH

