



## NORDIA 49 CRUISER

# NORDIA 49 CRUISER

## BROKER'S COMMENTS

Ocean going aluminium hull cruiser in top condition from the Royal Van Dam Dutch Shipyard. Yacht easy to handle with hydraulic bow thruster & hydraulic furlings and winches. Comfortable center cockpit with hard top dodger. Fully airconditioned and heat. Huge Master cabin with ensuite bathroom & separate stall shower. Underwater hull blasted & treated with epoxy primer & antifouling in 2022. Above waterline hull painted in 2020.

*Sofia Iliia-Salvanou*

## SPECIFICATIONS

<b>Dimensions</b>	14.90 x 4.60 x 1.80 (m)	<b>Builder</b>	Van Dam Nordia Jachten B.V.
<b>Built</b>	1990	<b>Cabins</b>	3
<b>Material</b>	Aluminium	<b>Berths</b>	6
<b>Engine(s)</b>	1 x PERKINS 4.236 diesel	<b>Hp/Kw</b>	90.00 (hp), 66.24 (kw)
<b>Asking price</b>	sold (VAT )	<b>Lying</b>	elsewhere / Not at sales office

## CONTACT

<b>Sales office</b>	De Valk Corfu	<b>Telephone</b>	(+30) 6948681503
<b>Address</b>	New Port of Corfu, near Gouvia Marina 490 83 Corfu GR	<b>E-mail</b>	corfu@devalk.nl

## DISCLAIMER

These particulars are given in good faith as supplied but cannot be guaranteed.



# NORDIA 49 CRUISER

## GENERAL

<b>Model</b>	NORDIA 49 CRUISER
<b>Type</b>	sailing yacht
<b>LOA (m)</b>	14,90
<b>Beam (m)</b>	4,60
<b>Draft (m)</b>	1,80
<b>Year built</b>	1990
<b>Builder</b>	Van Dam Nordia Jachten B.V.
<b>Country</b>	The Netherlands
<b>Designer</b>	Robert Van Dam
<b>Hull material</b>	aluminium
<b>Hull colour</b>	white
<b>Keel type</b>	fin keel Scheel
<b>Superstructure material</b>	aluminium
<b>Rubbing strake</b>	aluminum
<b>Deck material</b>	aluminium
<b>Deck finish</b>	teak Replaced: 2010 first quality Burma Repaired 2020,recaulking 2022
<b>Cockpit deck finish</b>	teak
<b>Antifouling (year)</b>	2022
<b>Dorades</b>	yes
<b>Window frame</b>	aluminium
<b>Window material</b>	tempered glass
<b>Deckhatch</b>	GEBO hatches
<b>Portholes</b>	yes
<b>Insulation</b>	yes
<b>Fuel tank (litre)</b>	750 Lt built into the keel plus 70 Lt Day tank
<b>Level indicator (fuel tank)</b>	Not working properly. in need of repair work.
<b>Freshwater tank (litre)</b>	aluminium 1100 Built in into the keel
<b>Level indicator (freshwater)</b>	Not working properly. in need of repair work.
<b>Blackwater tank (litre)</b>	350
<b>Blackwater tank extraction</b>	3 way valve



# NORDIA 49 CRUISER

Greywater tank (litre)	120 built into the keel.
Wheel steering	yes
Outside helm position	yes
Emergency tiller	yes
More info on hull	2022 Blasted below waterline Alum foundOK Epoxy primer,antifoul.
More info on paintwork	2020 painted above waterline including Mast
Extra info	Black water stainless steel tank under the Dinette.

## ACCOMMODATION

Cabins	3
Berths	6
Layout	yes
Floor	parquet
Doghouse	yes
Saloon	Leather cushions dark grey
Heating	EBERSPAECHER hot air diesel
Air-conditioning	Double unit
Navigation center	yes
Chart table	yes
Aft Cabin	yes
Dinette	yes
Opening door to cockpit	yes
Galley	yes
Countertop	marble
Sink	stainless steel
Cooker	yes
Oven	yes
Extractor	yes
Gas alarm	Ventilated Gas locker, shut off valve
Fridge	yes



# NORDIA 49 CRUISER

Freezer	yes
Hot water system	Boiler 60Lt to engine & 230V electric
Water pressure system	yes
Hot water tap	yes
Coffee maker	Only filter coffee pot
Crockery	yes
Owners cabin	double bed
Wardrobe	hanging and shelves
Bathroom	en suite
Toilet	en suite
Toilet system	manual
Wash basin	in the bathroom
Shower	en suite
Guest cabin 1	bunk bed X2
Wardrobe	yes
Bathroom	separate
Toilet	separate
Toilet system	manual
Wash basin	in the bathroom
Shower	separate
Guest cabin 2	bunk bed X2. Port Cabin, lower berth can be transformed to Double bed.
Wardrobe	yes
Bathroom	separate
Toilet	separate
Wash basin	in the bathroom
Shower	separate

## MACHINERY

No of engines	1
Make	PERKINS



# NORDIA 49 CRUISER

Type	4.236
HP	90
kW	66.24
Fuel	diesel
Year of overhaul	2010
Engine hours	5800
Drive	shaft
Shaft seal	Serviced in May 2022
Bowthruster	hydraulic
Gearbox	2010 revised
Propeller type	fixed
Propeller blades	3
Propeller shaft material	steel
Electric bilge pump	yes
Electrical installation	yes
Generator	ONAN 6,5Kw 2019 revised
Batteries	yes
Start battery	X 3 100Ah Year: 2019
Service battery	X 4 230Ah Year: 2021
Battery monitor	yes
Battery charger	yes
Solar panel	yes
Shorepower	with cable
Extra info	Small converter 350W and 24V/12V/230V

## NAVIGATION

Compass	Sestrel pedestal
Depth sounder	Raymarine ST60
Depth sounder/log	Raymarine ST60
Windset	Raymarine ST60+close haul
Repeater	Raymarine



# NORDIA 49 CRUISER

VHF	Sailor RT 2048 train & tram Inmarsat C
Autopilot	Raymarine ST7001 connected to Robertson electric drive unit
Radar	Raymarine RL70c
GPS	FURUNO GP32
Plotter/GPS	Raymarine RL70L
Navtex	FURUNO NX300
EPIRB	yes
Navigation lights	yes

## EQUIPMENT

Sprayhood	yes
Cockpit cover	yes
Dodger	Fixed al/nium, tempered glass to forward window Perspex to side
Bimini	yes
Window cover	yes
Cockpit cushions	yes
Cockpit table	yes
Bathing platform	Built in into the transom
Boarding ladder	yes
Gangway	Mechanical
Anchor	Delta 40Kg
Anchor chain	70m 10mm
Windlass	NEW 2022-LOFRANS Tigres 1500W
Dinghy	yes
Outboard	yes
Davits	X 2with LEWMAR 16ST winches integrated in pushpit together with
Sea railing	yes
Pushpit	yes
Life raft	Year of costruction: 2017
Life raft (pers)	6



# NORDIA 49 CRUISER

Last life raft survey	2022
Lifejackets	Auto inflation X 4
Lifebuoy	yes
Wiper	yes
Radar reflector	yes
Fenders	yes
Mooring lines	yes
Tools	yes
Radio-cd player	SONY
Clock - barometer	yes
Fire extinguisher	X 3, Fire blanket
Extinguisher in engine room	yes

## RIGGING

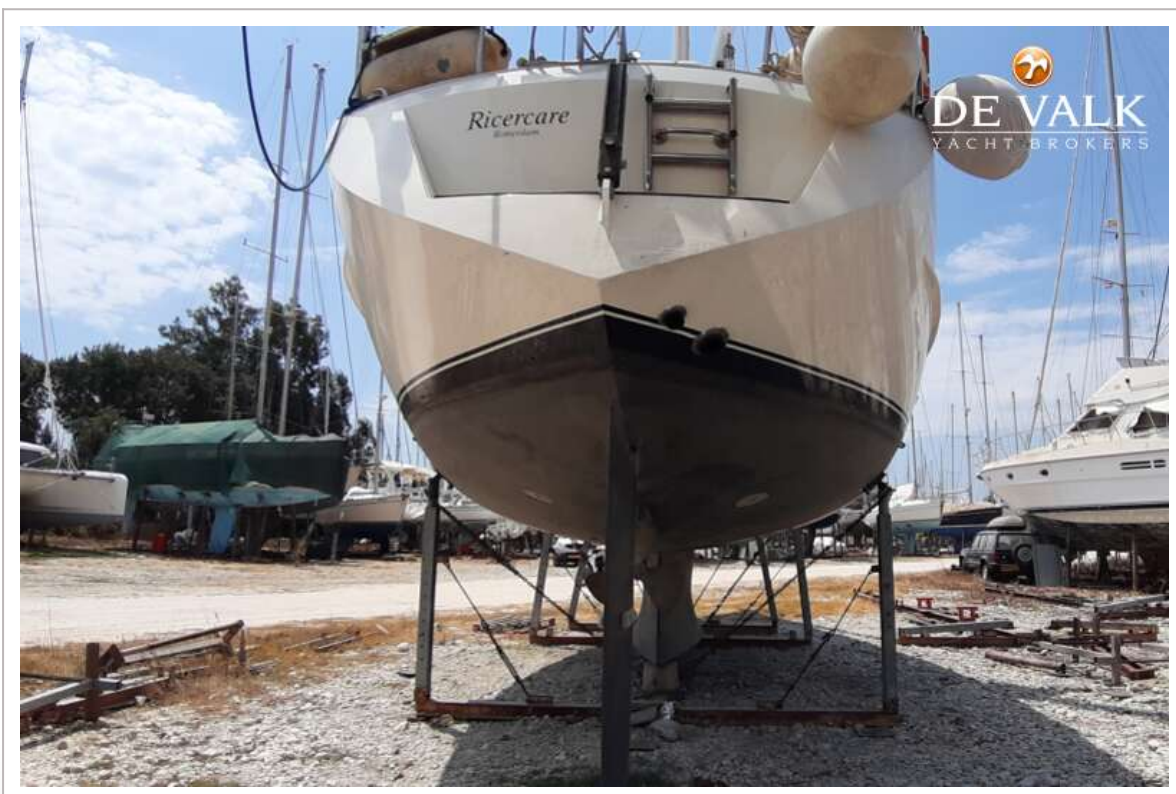
Rigging	Renewal running Rigging in 2003 & Hydraulic furling by HULL SPAR
Standing rigging	2010 renewal standing Rigging. Report available.
Material mast	aluminium Deck stepped.
Spreaders	yes
Mainsail	Furling into the mast. 2016 47m2 RECKMANN hydraulic
Genoa	Roller. 2016. 90m2 RECKMANN hydraulic
Genoa II	1990 Seldom used
Stormjib	1990 Seldom used
Primary sheet winch	yes
Genoa sheetwinches	Hydraulic
Halyard winches	yes
Extra info	Windlass LOFRANS TIGRES1200



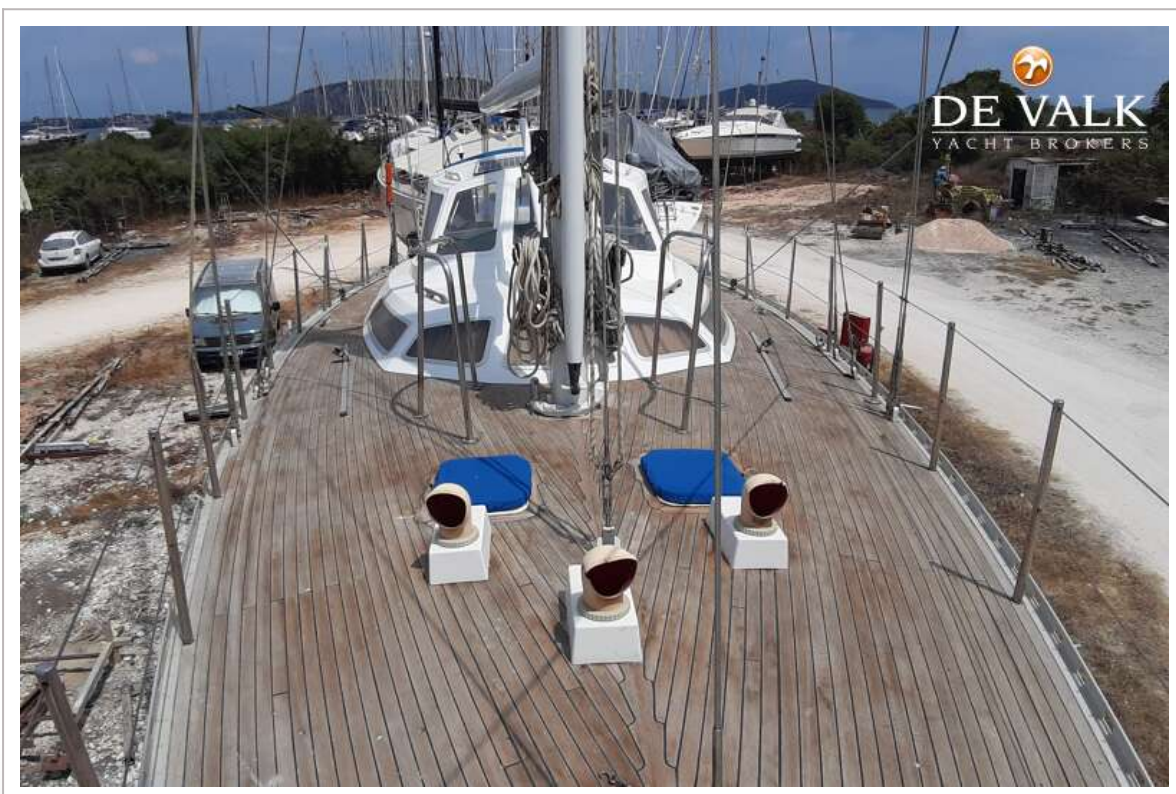
# NORDIA 49 CRUISER



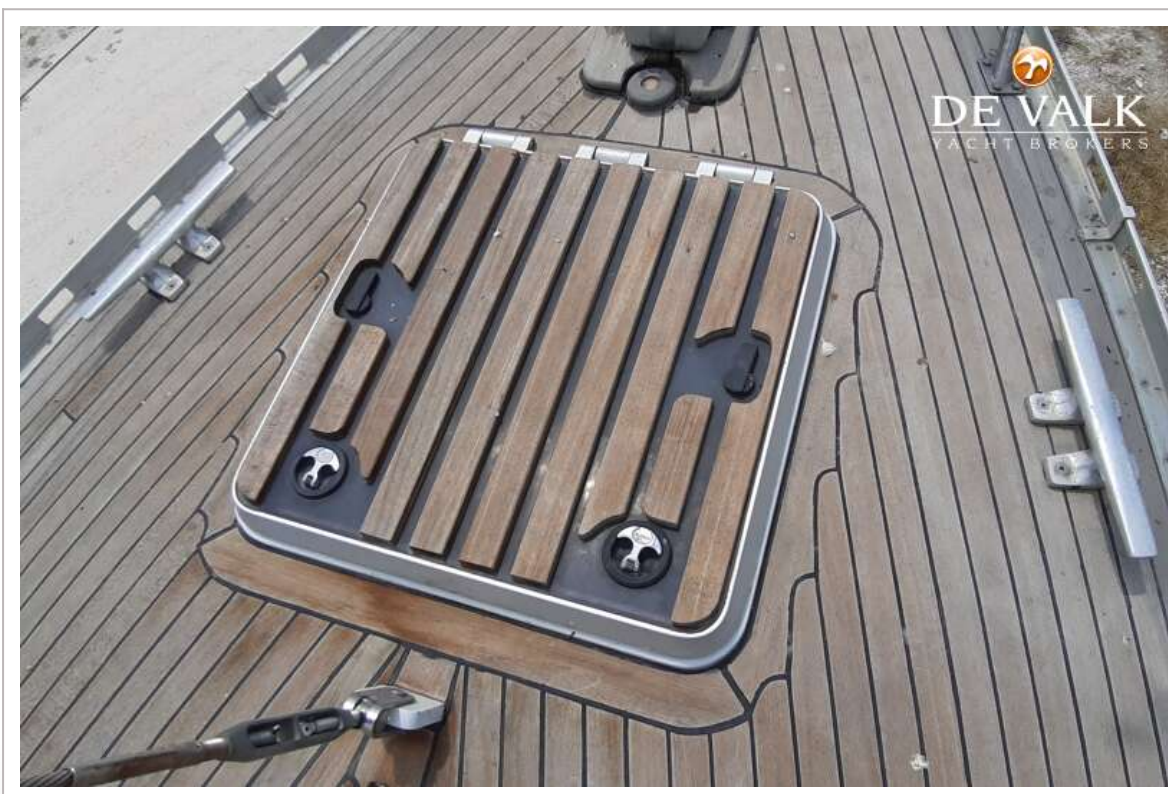
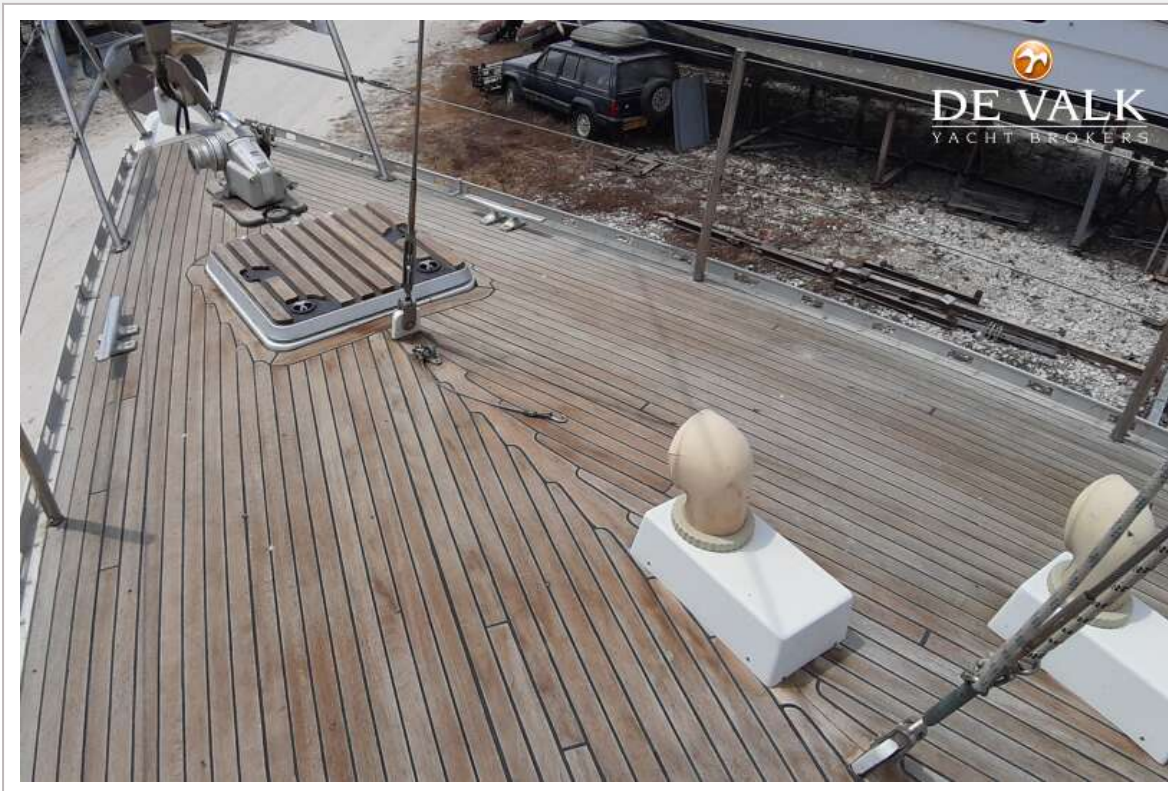
# NORDIA 49 CRUISER



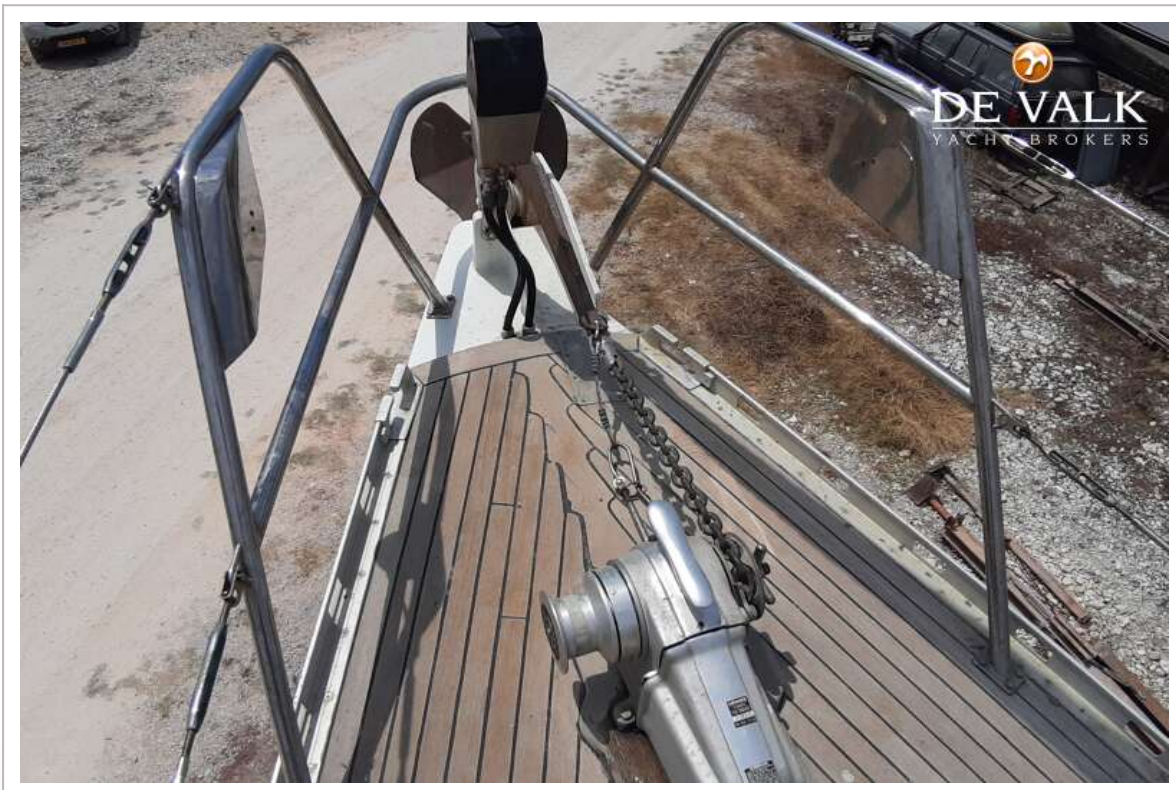
# NORDIA 49 CRUISER



# NORDIA 49 CRUISER



# NORDIA 49 CRUISER



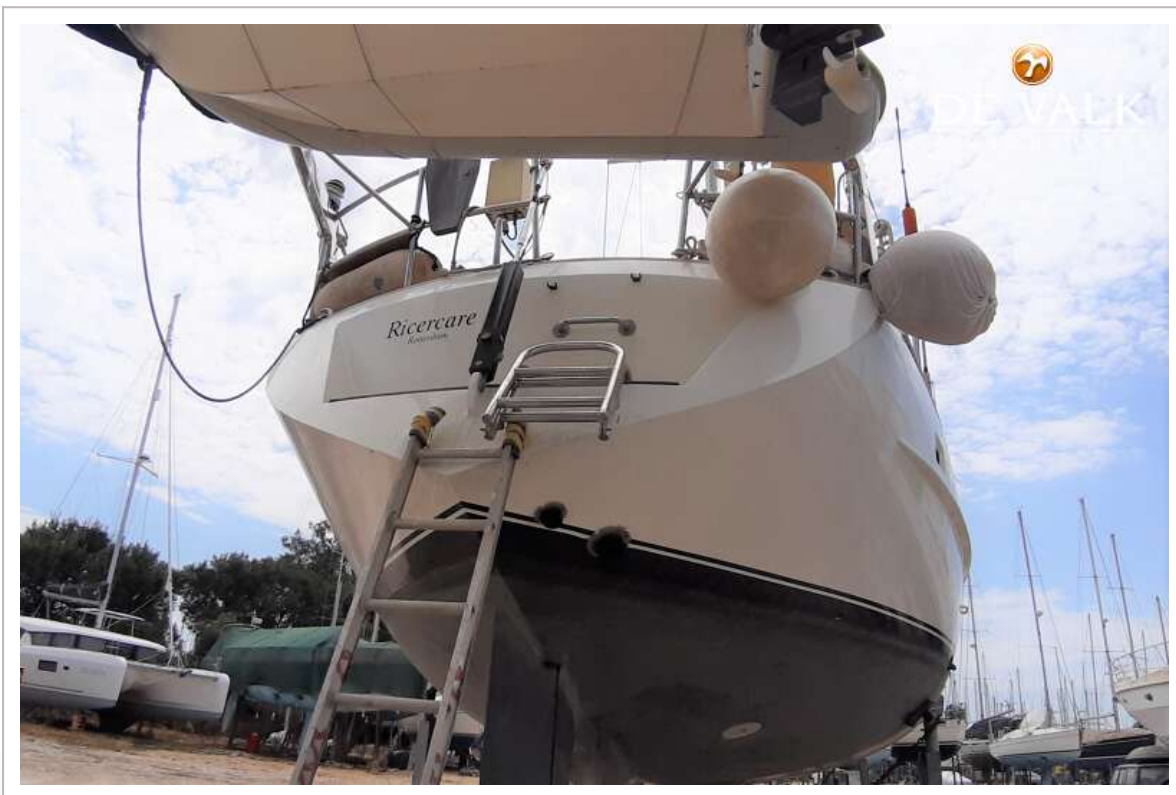
# NORDIA 49 CRUISER



# NORDIA 49 CRUISER



# NORDIA 49 CRUISER



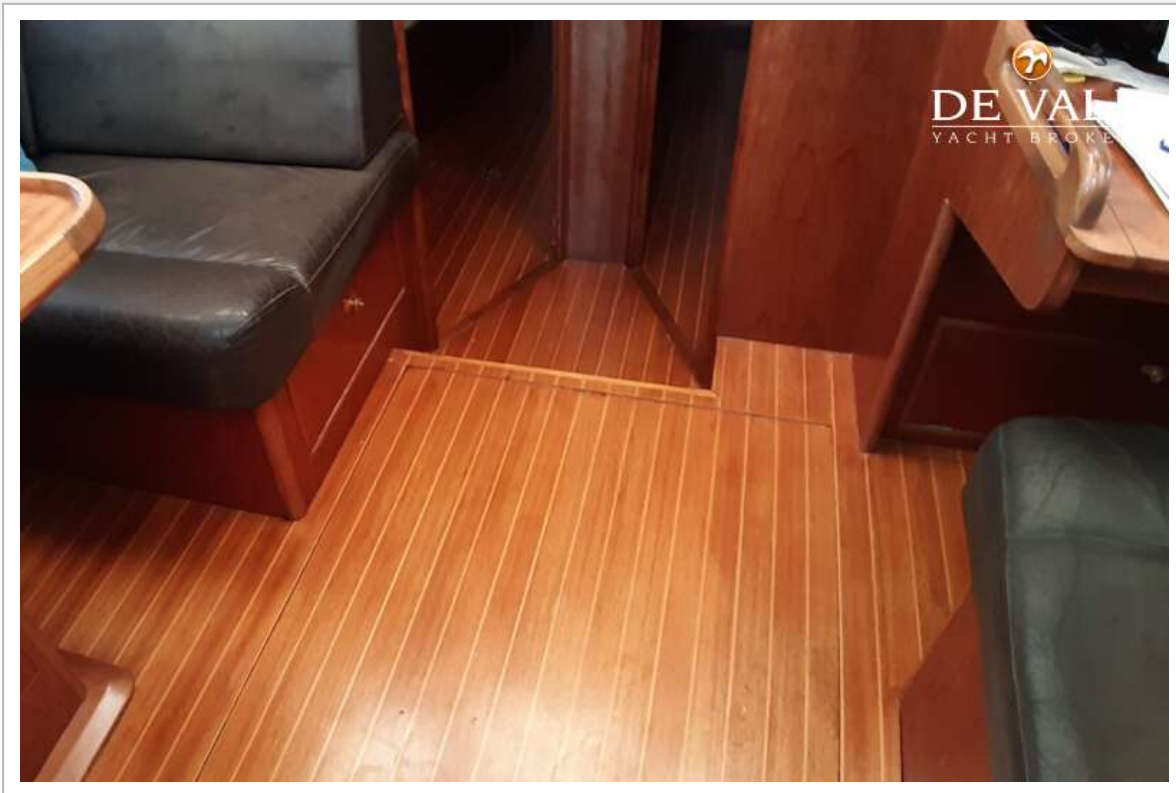
# NORDIA 49 CRUISER



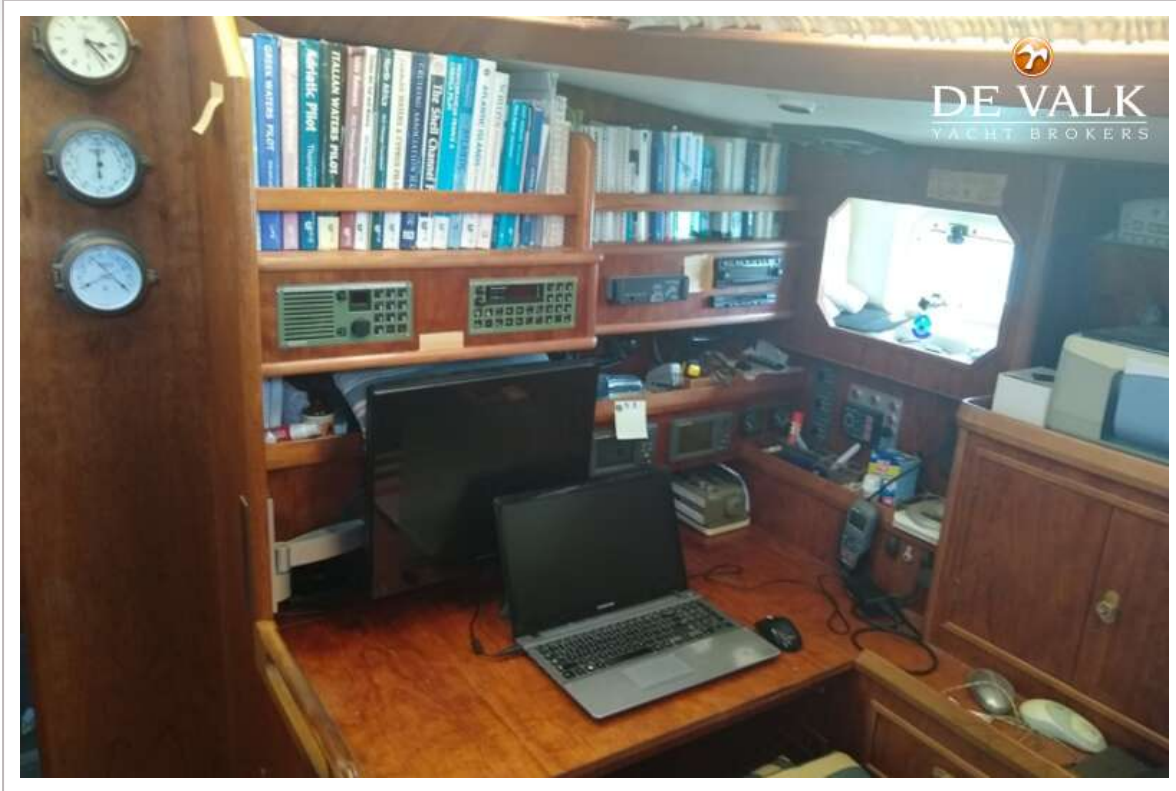
# NORDIA 49 CRUISER



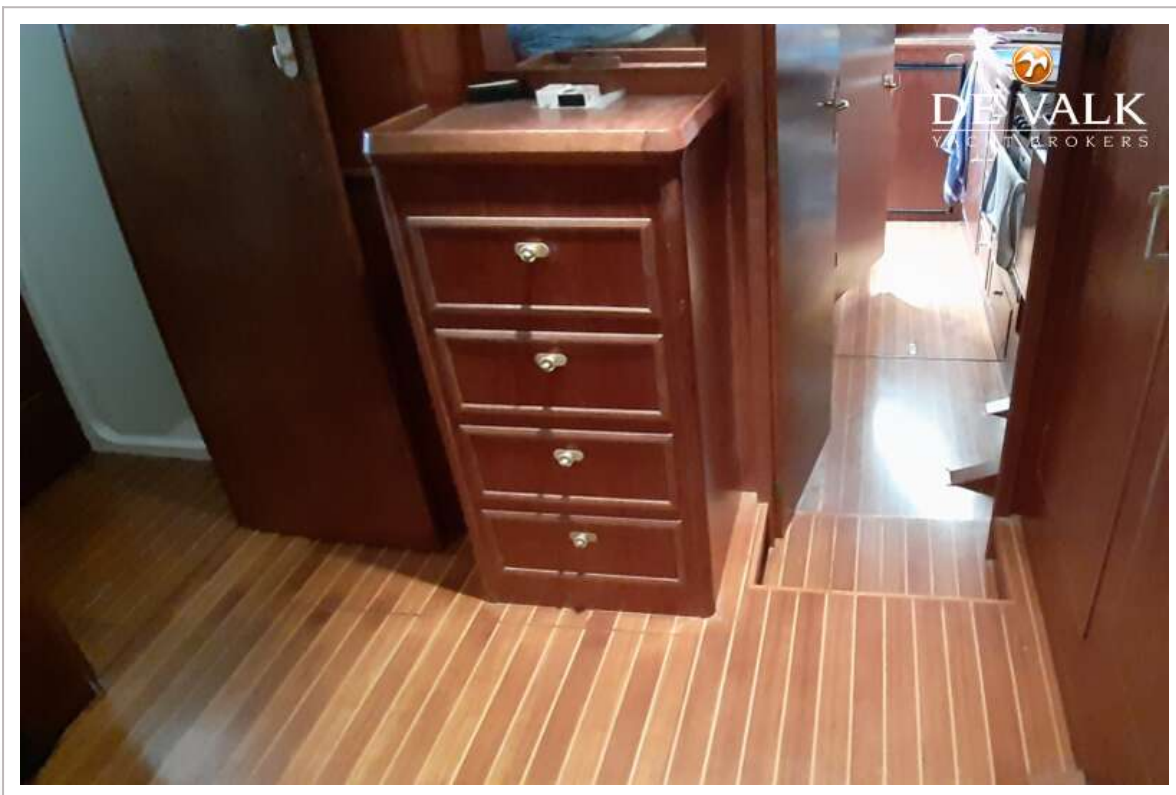
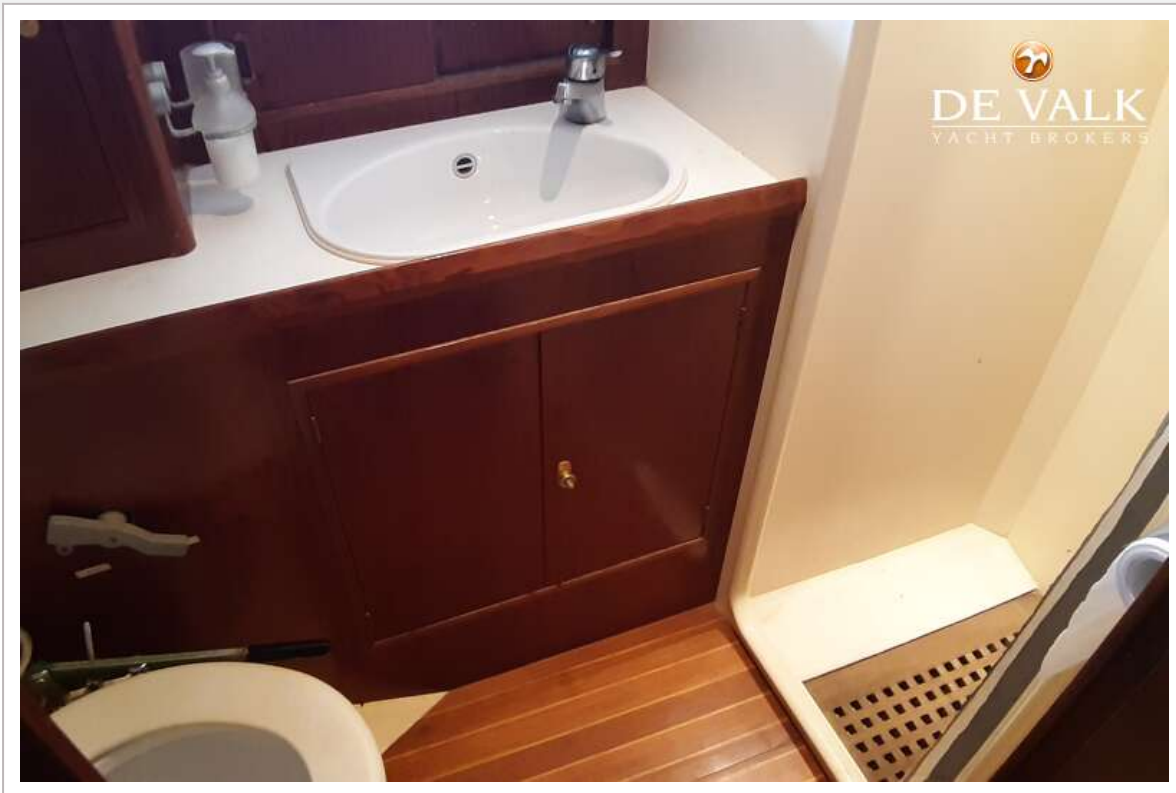
# NORDIA 49 CRUISER



# NORDIA 49 CRUISER



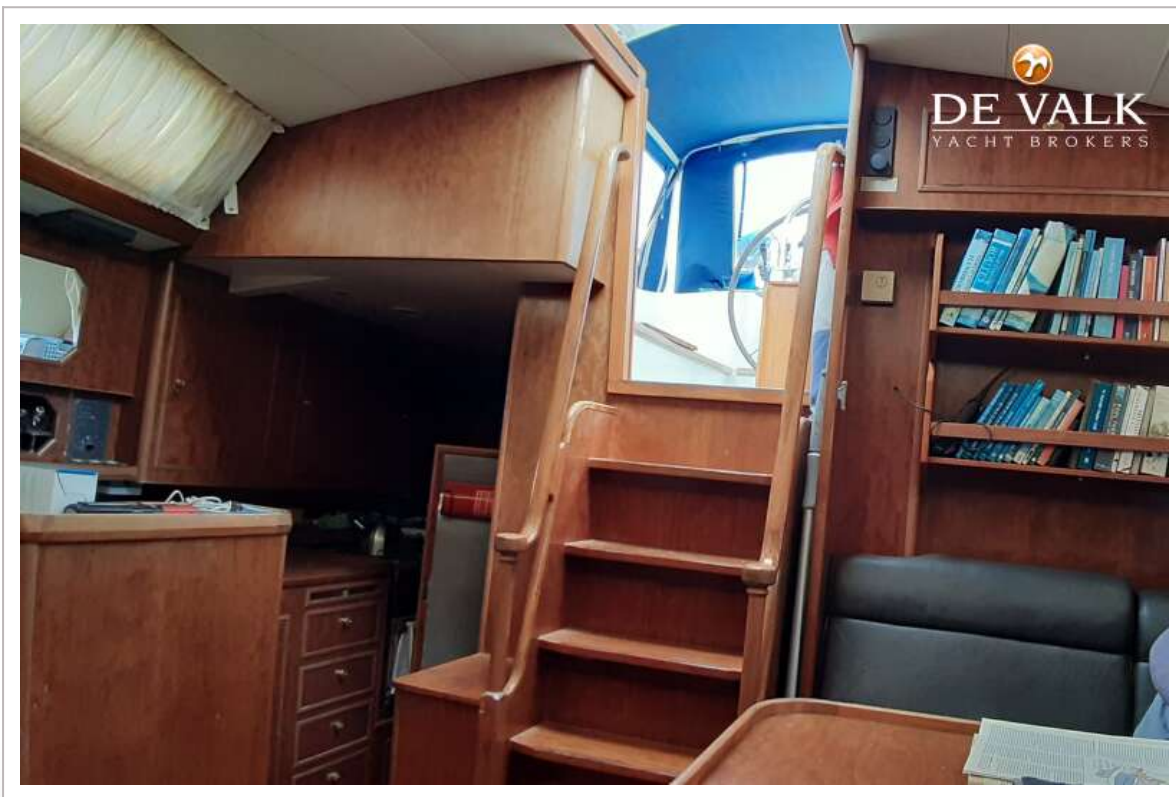
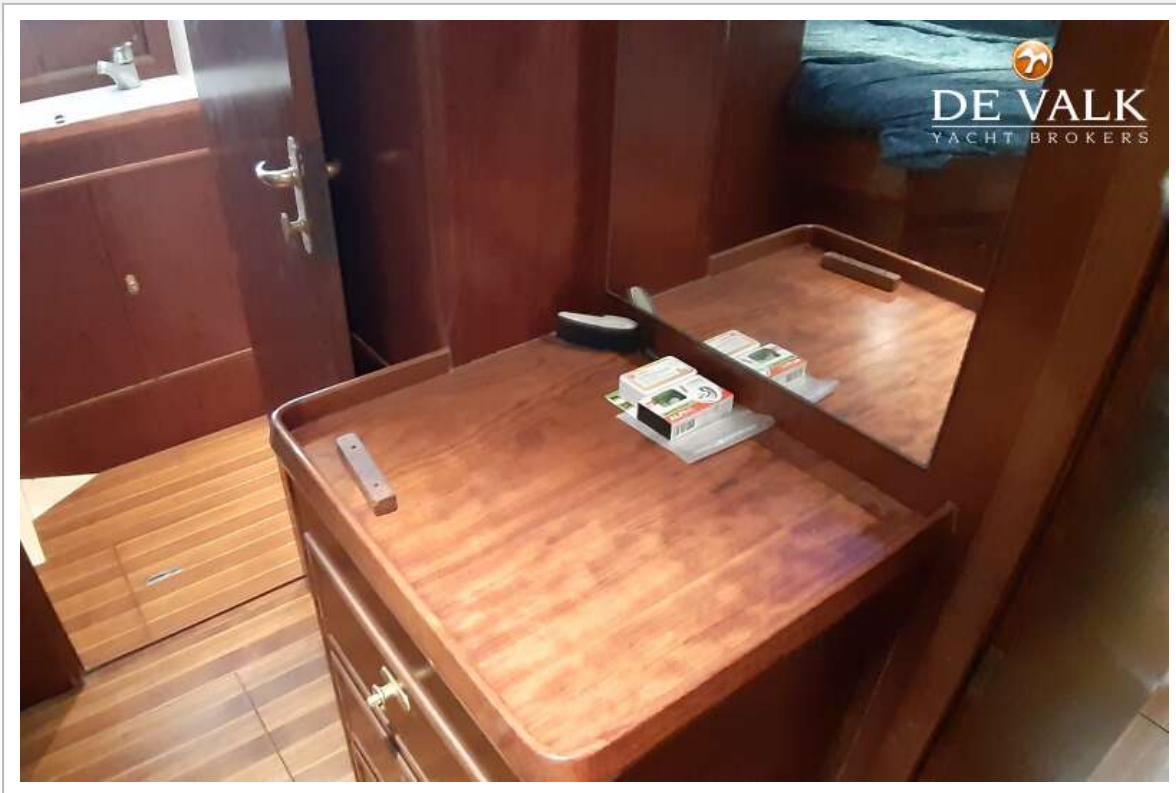
# NORDIA 49 CRUISER



# NORDIA 49 CRUISER



# NORDIA 49 CRUISER



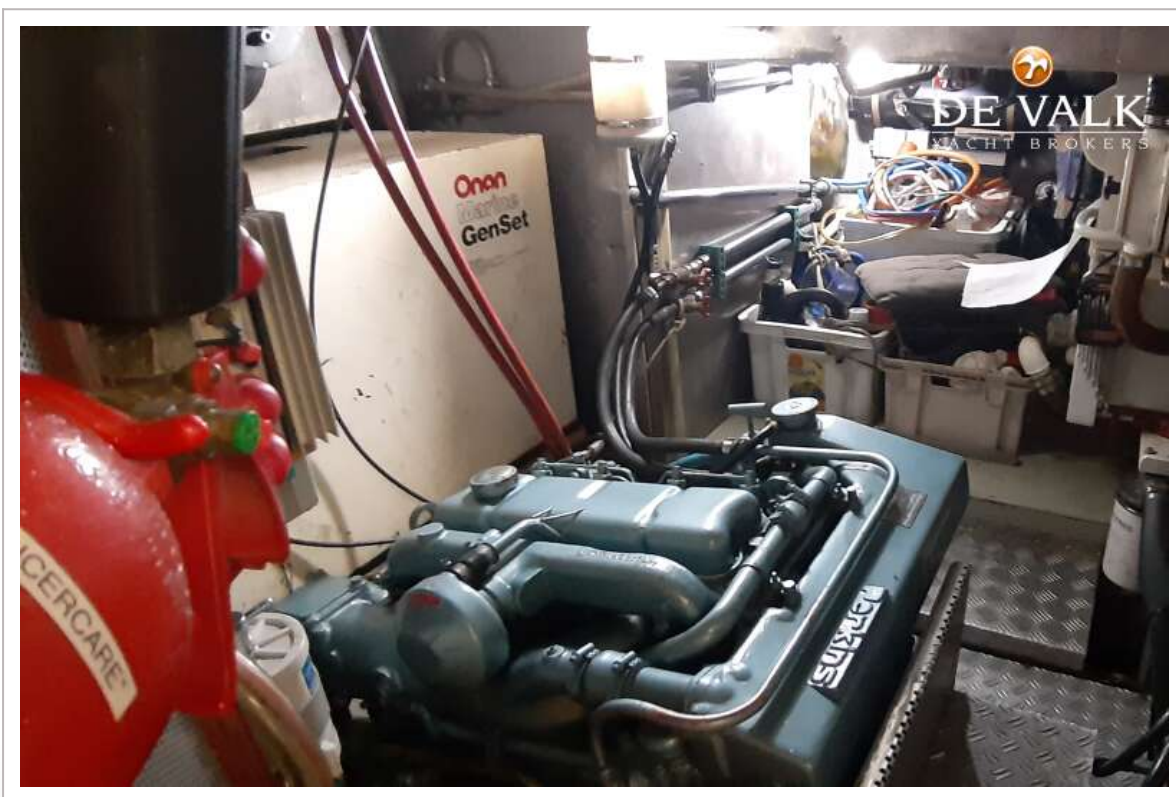
# NORDIA 49 CRUISER



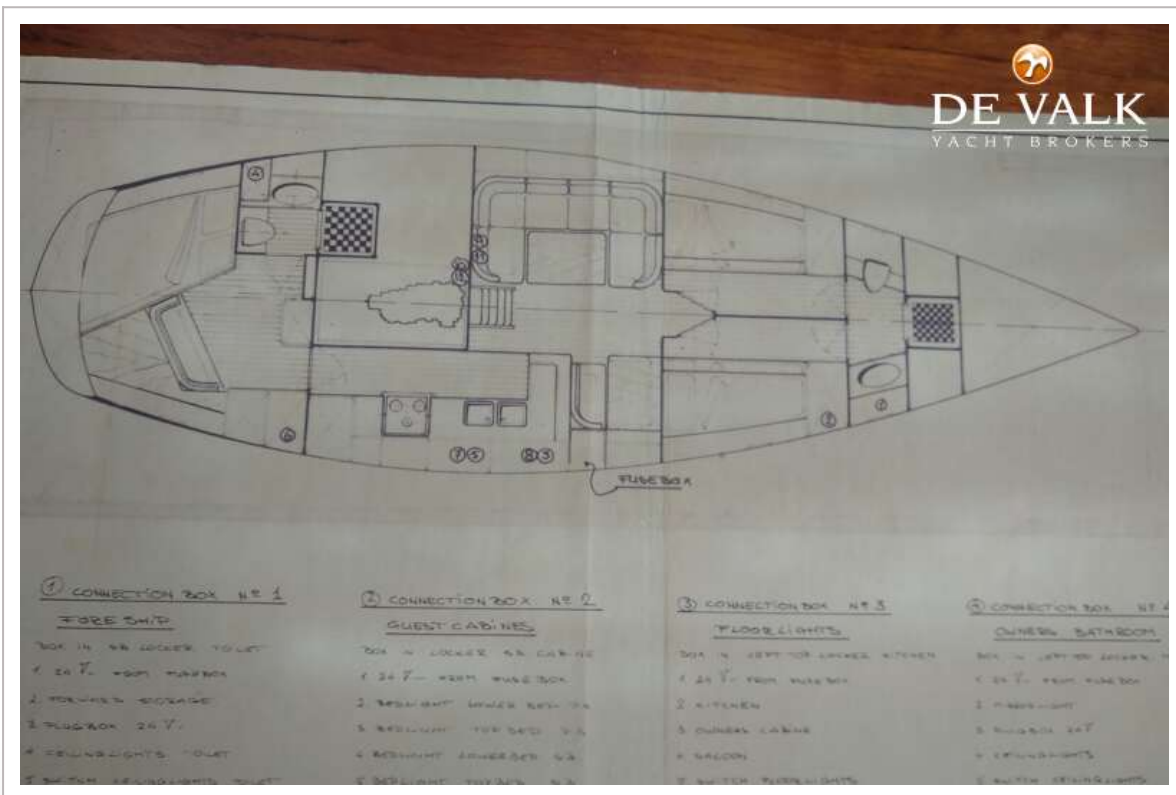
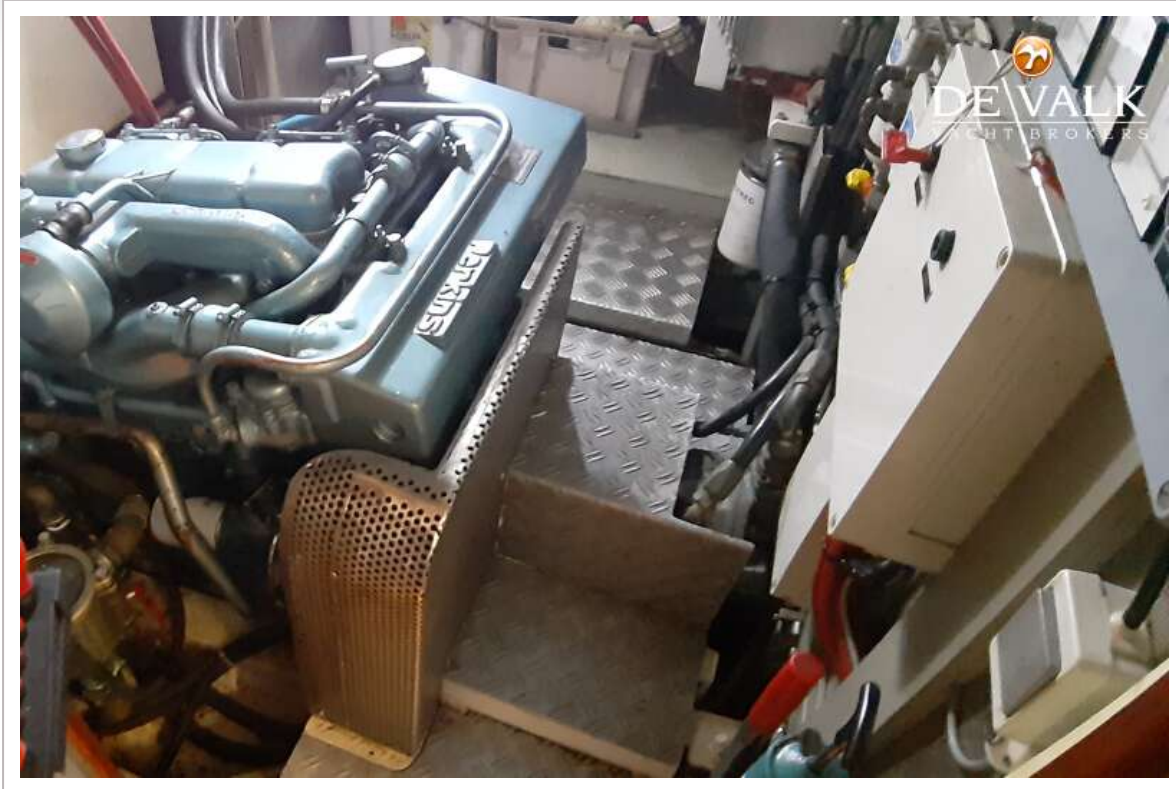
# NORDIA 49 CRUISER



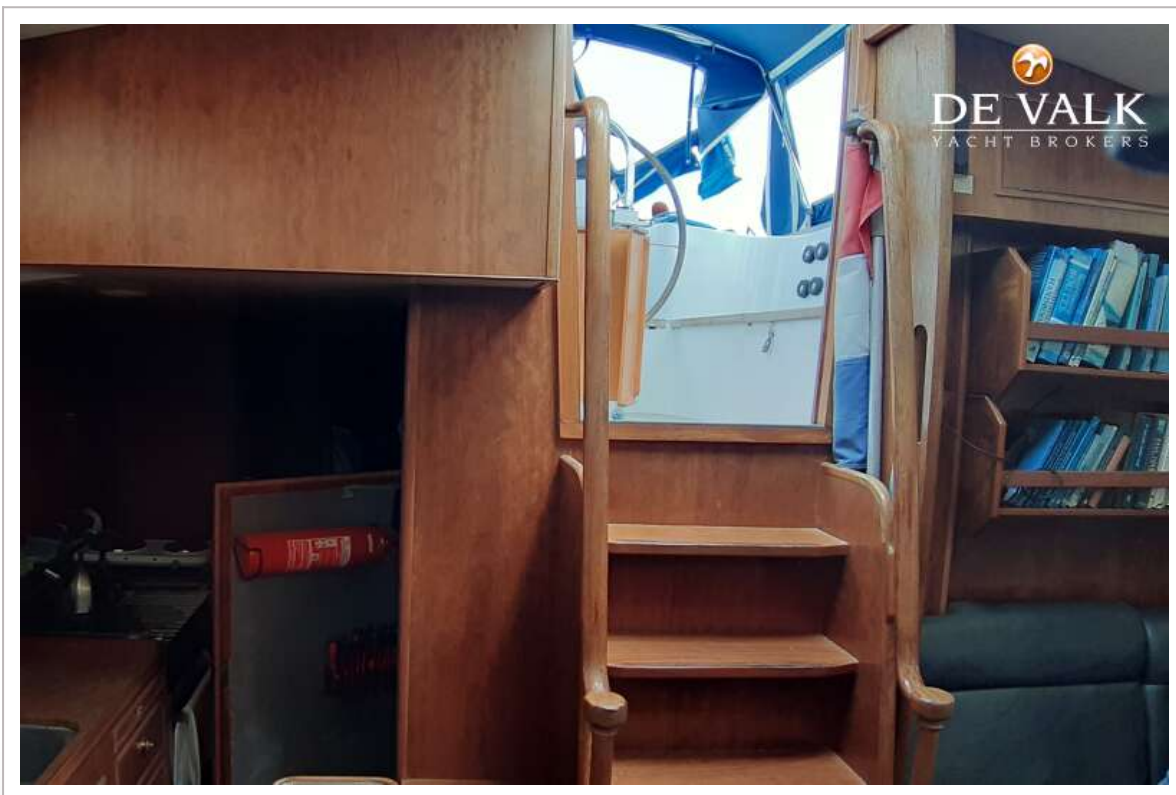
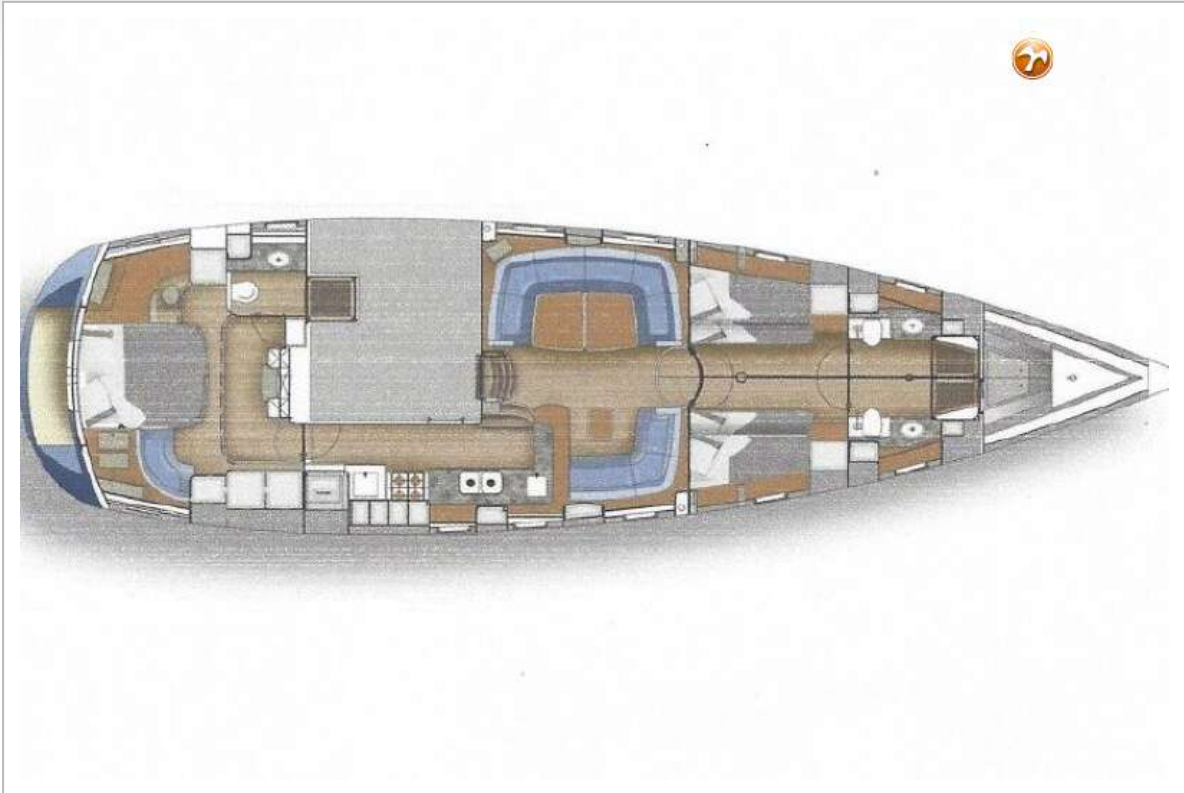
# NORDIA 49 CRUISER



# NORDIA 49 CRUISER



# NORDIA 49 CRUISER



# NORDIA 49 CRUISER



