



COLVIC SUNCRUISER 35

COLVIC SUNCRUISER 35

BROKER'S COMMENTS

The Colvic Suncruiser 35 was built in 1989 by Colvic UK and the interior finished by Kempers NL. She has a large fly bridge and spacious cockpit. The interior is light and spacious with a very large saloon, open plan helm station. She offers a very spacious galley with plenty of under counter storage. Below you'll find one double cabin with separate bathroom and a front cabin with island bed with en-suite bathroom. This yacht comes with an air-condition/ heating to make your stay on board even more than comfortable which makes this a great family cruiser! She can be seen in our sales marina

Reinier van der Wolf

SPECIFICATIONS

Dimensions	11.20 x 3.95 x 1.10 (m)	Builder	Colvic UK / Alva Yachts / Kempers NL
Built	1989	Cabins	2
Material	GRP	Berths	5
Engine(s)	2 x Volvo Penta TAMD41 diesel	Hp/Kw	2 x 200.00 (hp), 147.20 (kw)
Asking price	sold (VAT)	Lying	at sales office

CONTACT

Sales office	De Valk Monnickendam B.V.	Telephone	+31 (0)299 65 63 50
Address	Hoogedijk 6 1145 PM Katwoude NL	E-mail	monnickendam@devalk.nl

DISCLAIMER

These particulars are given in good faith as supplied but cannot be guaranteed.



COLVIC SUNCRUISER 35

GENERAL

Model	COLVIC SUNCRUISER 35
Type	motor yacht
LOA (m)	11,20
Beam (m)	3,95
Draft (m)	1,10
Air draft (m)	4,70
Headroom (m)	1,90
Year built	1989
Builder	Colvic UK / Alva Yachts / Kempers NL
Country	United Kingdom
Designer	John A. Bennett Marine Ltd.
Displacement (t)	8,5
Hull material	GRP
Hull colour	white
Hull shape	deep-V
Superstructure material	GRP
Rubbing strake	aluminum Rubber +
Deck material	GRP
Deck finish	non-skid paint
Superstructure deck finish	non-skid paint
Cockpit deck finish	synthetic teak
Antifouling (year)	2021
Window frame	aluminium
Window material	tempered glass Front windows
Deckhatch	yes
Portholes	aluminium
Insulation	glasswool
Flybridge	yes
Flybridge cover	old cover still available 2022 (Schokker Volendam)
Flybridge suncover	Schokker Volendam



Radar arch	non collapsible
Fuel tank (litre)	stainless steel +/- 300
Fuel tank 2 (litre)	stainless steel +/- 300
Level indicator (fuel tank)	yes
Freshwater tank (litre)	stainless steel 400
Level indicator (freshwater)	yes
Wheel steering	hydraulic
Inside helm position	yes
Flybridge helm position	hydraulic

ACCOMMODATION

Cabins	2
Berths	5
Interior	ash
Floor	vinyl Teak look
Open cockpit	yes
Saloon	yes
Headroom saloon (m)	+/- 1.90
Heating	diesel ducted hot air Webasto Evo air Top
Air-conditioning	reverse cycle airco
Sliding door to cockpit	yes
Galley	yes
Countertop	plastic
Sink	stainless steel
Cooker	calor gas Three burner
Oven	yes
Microwave/oven combi	yes
Fridge	Isotherm 60 l.
Hot water system	220V + engine Isotherm 50 l.
Water pressure system	electrical
Owners cabin	French bed Front



Bed length (m)	1.90 x 1.40
Wardrobe	hanging/drawers/shelves
Bathroom	en suite
Toilet	en suite
Toilet system	electric
Wash basin	in the bathroom
Guest cabin 1	double bed + single bed Port side
Bed length (m)	1.90
Wardrobe	drawers and shelves
Bathroom	separate
Toilet	separate
Toilet system	manual
Wash basin	yes
Shower	separate

MACHINERY

No of engines	2
Make	Volvo Penta
Type	TAMD41
HP	200
kW	147.20
Fuel	diesel
Year installed	1989
Maximum speed (kn)	24
Cruising speed (kn)	14
Consumption (l/hr)	8
Engine hours	2800
Engine cooling system	freshwater heat exchanger
Drive	shaft
Engine controls	bowden cable
Gearbox	mechanical



Bowthruster	electric Side Power 55 Kgf with remote
Exhaust	watercooled
Propeller type	fixed
Propeller blades	yes
Propeller shaft material	stainless steel
Shaft lubrication	water
Electric bilge pump	3x
Start battery	1x 95 Ah (2017)
Service battery	2x 220 Ah (2020)
Bowthruster battery	1x 100 Ah (2020)
Battery monitor	yes
Inverter	3 kw
Shorepower	with cable

NAVIGATION

Compass	Plastimo
Depth sounder	Seafarer
VHF	with ATIS 2x
Autopilot	no function
Rudder angle indicator	yes
Radar/GPS/plotter	Garmin GPSMAP 4012 (inside) GPSMAP 4008 (flybridge)
AIS receiver	linked to chartplotter
Camera	through Chartplotter
Searchlight	no function

EQUIPMENT

Cockpit cover	old cobver available 2022
Bimini	yes
Bathing platform	yes
Boarding ladder	stainless steel
Transom door	yes



COLVIC SUNCRUISER 35

Anchor	yes
Anchor chain	40 m.
Windlass	electrical With remote control or bottoms on deck
Davits	yes
Davits controls	manual
Sea railing	stainless steel
Grab rail (superstructure)	stainless steel
Lifejackets	2x
Wiper	2x
Horn	yes
Fenders	6x
Spare parts	engine parts
TV	yes
Clock - barometer	yes
Fire extinguisher	yes
Extinguisher in engine room	yes



COLVIC SUNCRUISER 35



COLVIC SUNCRUISER 35



COLVIC SUNCRUISER 35



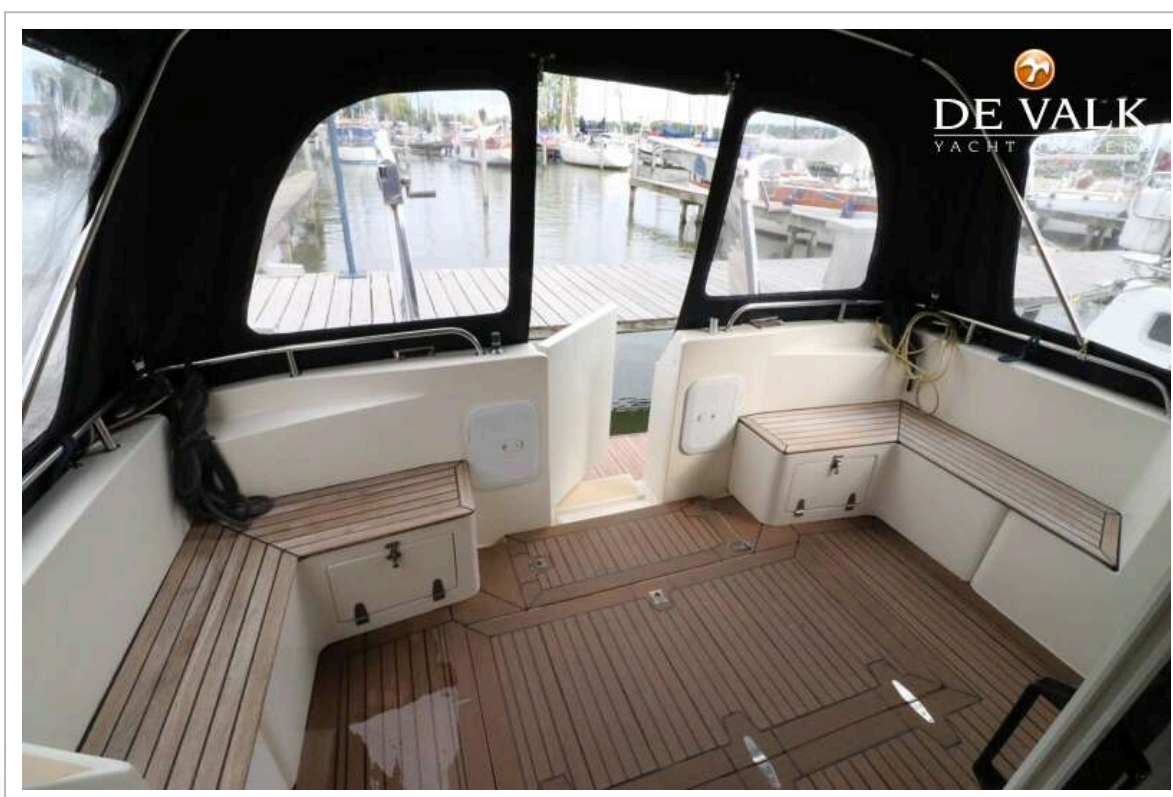
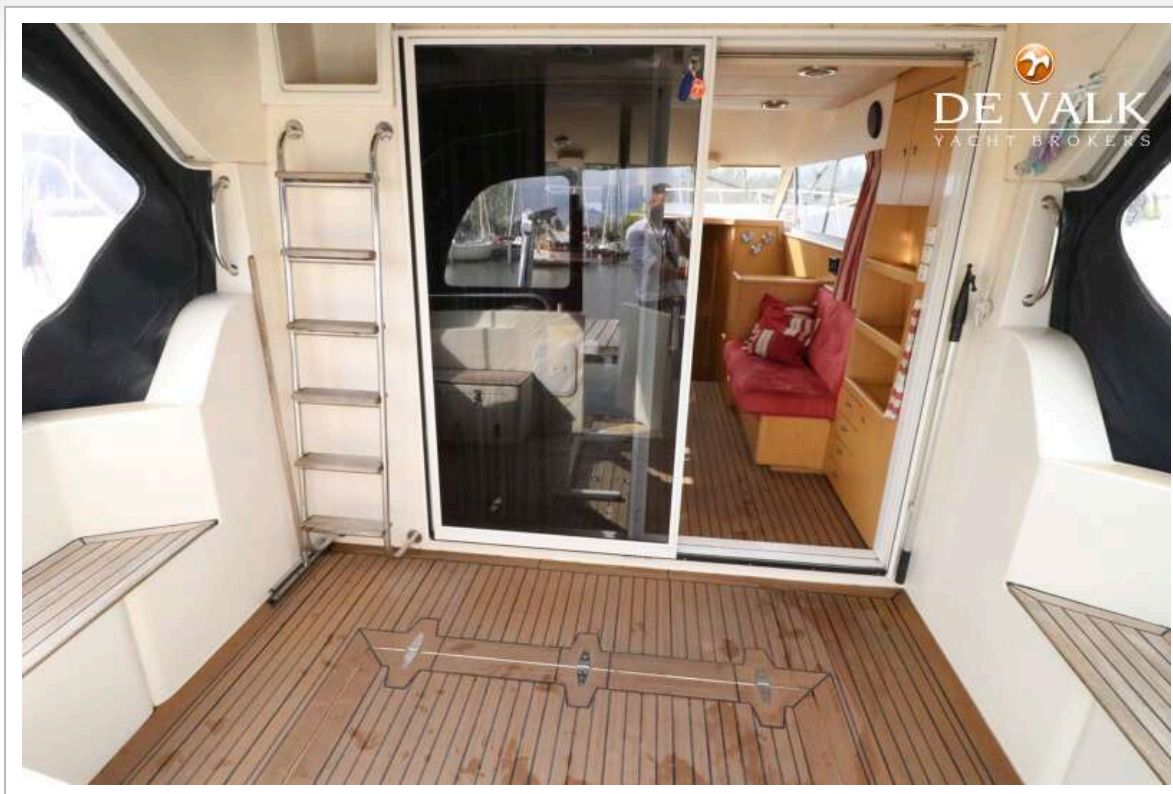
COLVIC SUNCRUISER 35



COLVIC SUNCRUISER 35



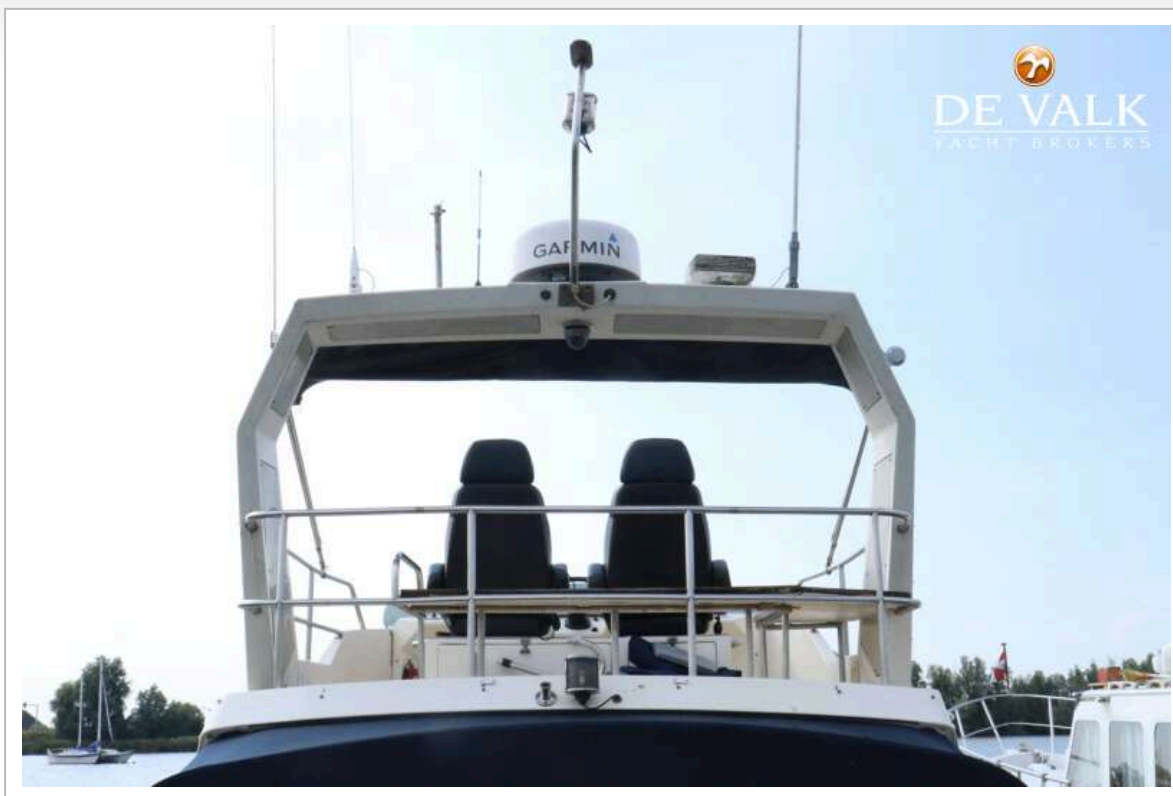
COLVIC SUNCRUISER 35



COLVIC SUNCRUISER 35



COLVIC SUNCRUISER 35



COLVIC SUNCRUISER 35



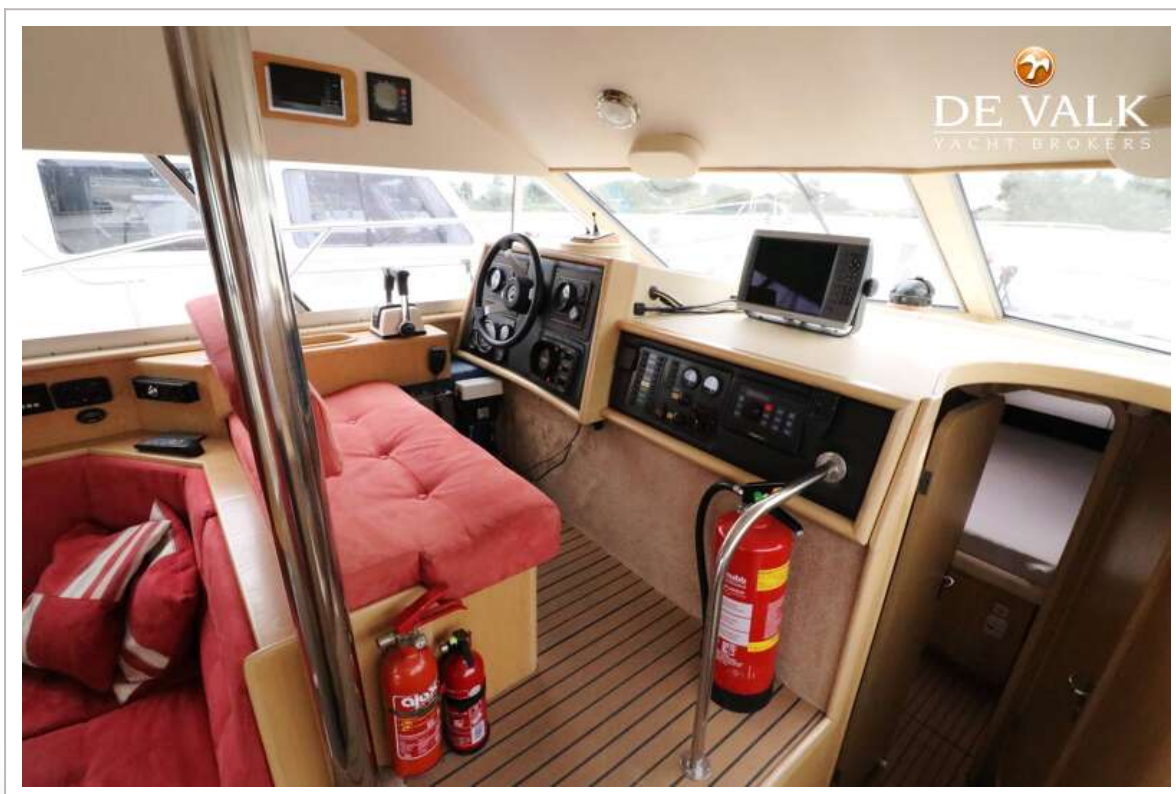
COLVIC SUNCRUISER 35



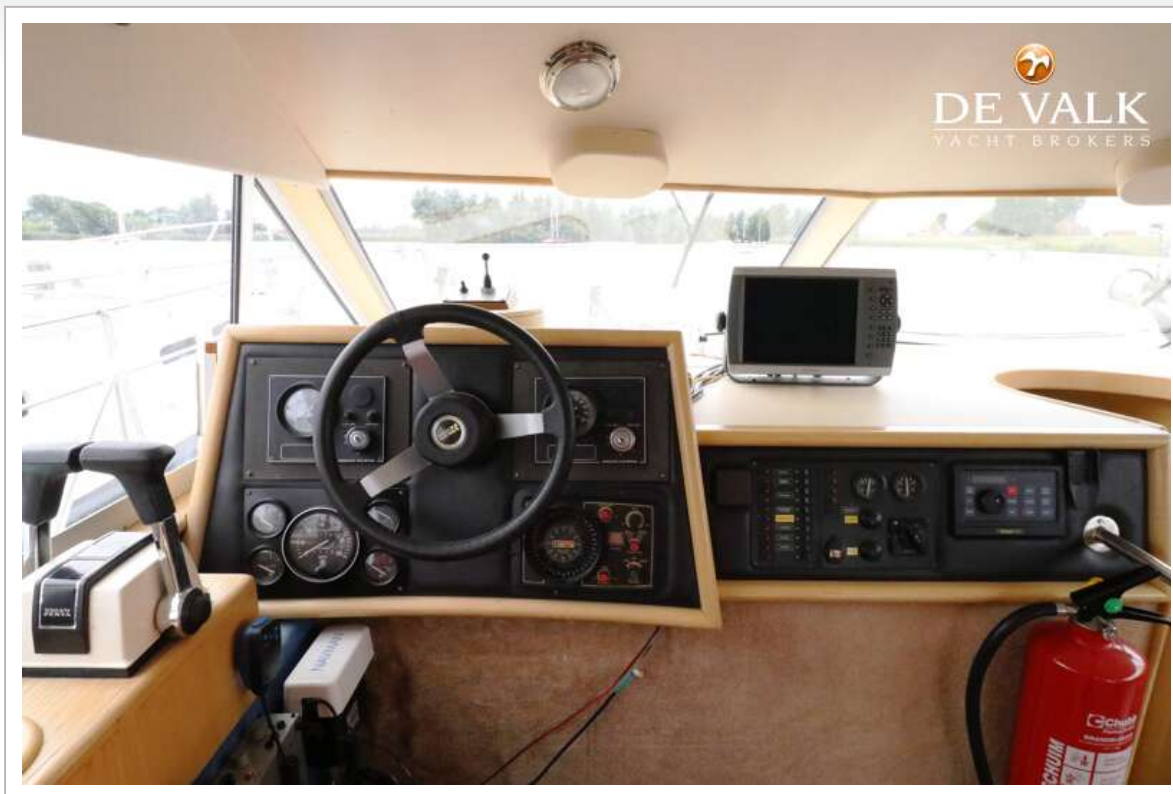
COLVIC SUNCRUISER 35



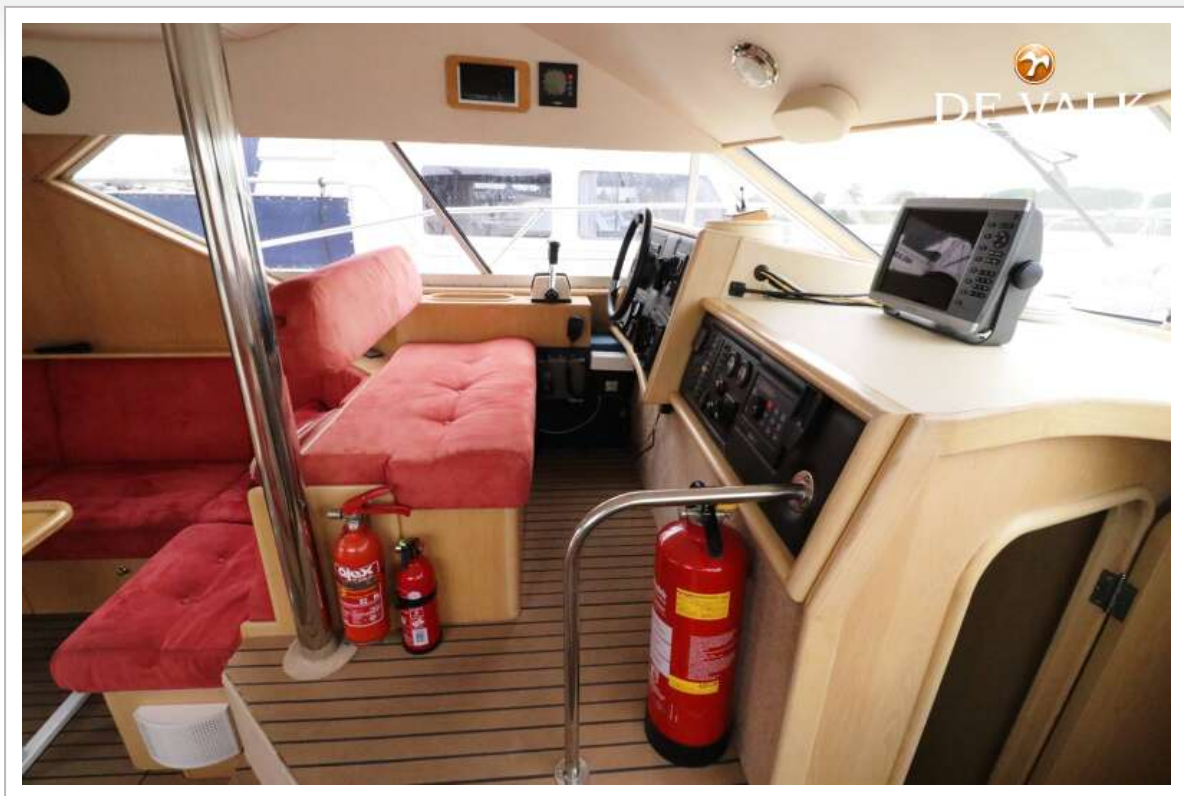
COLVIC SUNCRUISER 35



COLVIC SUNCRUISER 35



COLVIC SUNCRUISER 35



COLVIC SUNCRUISER 35



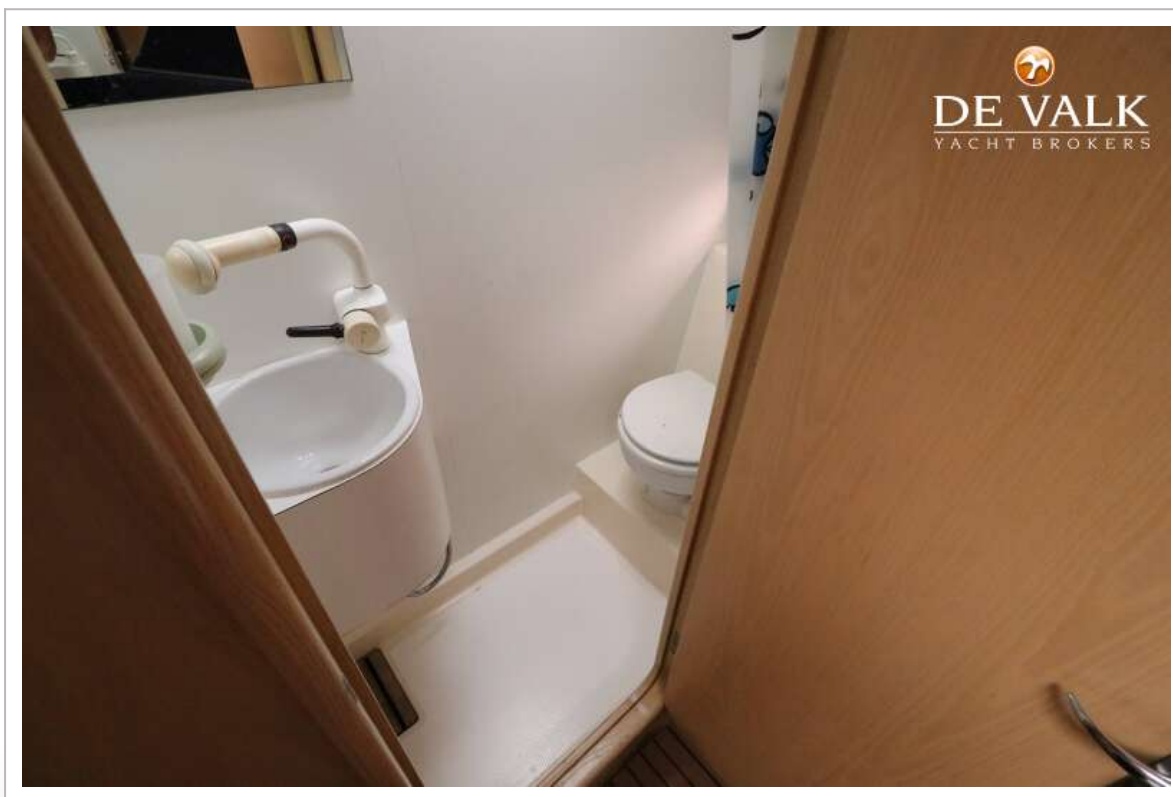
COLVIC SUNCRUISER 35



COLVIC SUNCRUISER 35



COLVIC SUNCRUISER 35



COLVIC SUNCRUISER 35

