



DE VALK  
YACHT BROKERS



PUFFIN 42



DE VALK  
YACHT BROKERS

## BROKER'S COMMENTS

"Papagaaiduiker" is for sale again. After a time of refit and improvements this unique yacht is back for sale. Only few of these have ever been built, so this is maybe your opportunity. A large number of smaller and larger upgrades and refit-jobs have been done recently, so she comes in a ready-to-use status. If you consider such a beauty to become yours, do not hesitate to contact us.

*Jürgen Jacobs*

## SPECIFICATIONS

<b>Dimensions</b>	12.73 x 4.20 x 2,35 / 1.05 (m)	<b>Builder</b>	Scheepsbouw Kroes
<b>Built</b>	1996	<b>Cabins</b>	1
<b>Material</b>	Steel	<b>Berths</b>	5
<b>Engine(s)</b>	1 x Volvo Penta D2-75F diesel	<b>Hp/Kw</b>	75.00 (hp), 55.20 (kw)
<b>Asking price</b>	sold (VAT )	<b>Lying</b>	contact sales office

## CONTACT

<b>Sales office</b>	De Valk Hamburg	<b>Telephone</b>	+49 40 46 000 999
<b>Address</b>	Domstraße 11 20095 Hamburg DE	<b>E-mail</b>	hamburg@devalk.nl

## DISCLAIMER

These particulars are given in good faith as supplied but cannot be guaranteed.



## GENERAL

Model	PUFFIN 42
Type	sailing yacht
LOA (m)	12,73
LWL (m)	11,20
Beam (m)	4,20
Draft (m)	1,05
Draft min (m)	2,35
Air draft (m)	21,50
Headroom (m)	2,00
Year built	1996
Builder	Scheepsbouw Kroes
Country	The Netherlands
Designer	Olivier van Meer
Displacement (t)	19
Ballast (tonnes)	lead 4,2
Hull material	steel
Hull colour	blue
Hull thickness (mm)	15 / 10 / 5
Hull shape	round-bilged
Keel type	centreboard
Superstructure material	steel
Superstructure (mm)	4
Deck plate thickness (mm)	4
Rubbing strake	steel
Deck material	steel
Deck finish	non-skid paint Coelan Farb Chips
Superstructure deck finish	non-skid paint
Cockpit deck finish	teak New teak in cockpit 2022
Antifouling (year)	2015
Dorades	3



Window frame	brass
Window material	tempered glass
Deckhatch	5x and 2x dormer
Portholes	brass
Insulation	foam plates
Radar arch	non collapsible
Fuel tank (litre)	steel 2 x 275l (approx)
Level indicator (fuel tank)	New in 2022
Freshwater tank (litre)	steel 2 separate tanks - a total of 900 liters
Level indicator (freshwater)	yes
Greywater tank (litre)	With automatic pump, new in 2022
Wheel steering	hydraulic
Outside helm position	yes

## ACCOMMODATION

Cabins	1
Berths	5
Interior	mahogany
Floor	parquet
Open cockpit	yes
Deck saloon	yes
Saloon	yes
Headroom saloon (m)	>2
Heating	diesel ducted hot air Webasto 5L diesel heater
Chart table	yes
Dinette	yes
Galley	yes
Countertop	stainless steel
Sink	stainless steel
Cooker	calor gas Broadwater Marine stove - 4 burner
Oven	In cooker



Fridge	New fridge 2022 with freezing unit
Hot water system	220V + engine
Water pressure system	electrical New water pressure pump 2022
Owners cabin	double bed
Bed length (m)	>2
Wardrobe	yes
Toilet	separate
Toilet system	yes
Wash basin	at the toilet
Shower	separate
Guest cabin 1	double bed
Bed length (m)	>2
Guest cabin 2	single bed
Bed length (m)	>2
Extra info	New mattresses and upholstery in 2019

## MACHINERY

No of engines	1
Make	Volvo Penta
Type	D2-75F
HP	75
kW	55.20
Fuel	diesel
Year installed	2018
Maximum speed (kn)	7
Cruising speed (kn)	6,5
Engine hours	200
Engine cooling system	freshwater heat exchanger
Drive	shaft
Engine controls	yes
Gearbox	mechanical



<b>Bowthruster</b>	electric Vetus incl new Battery (2021)
<b>Exhaust</b>	watercooled
<b>Thrust bearing</b>	yes
<b>Propeller type</b>	fixed
<b>Propeller blades</b>	3
<b>Propeller shaft material</b>	stainless steel
<b>Shaft lubrication</b>	water
<b>Manual bilge pump</b>	yes
<b>Electric bilge pump</b>	yes
<b>Electrical installation</b>	12 volt
<b>Batteries</b>	yes
<b>Start battery</b>	New in 2022
<b>Service battery</b>	2x 175Ah - semi-traction
<b>Bowthruster battery</b>	1x 180Ah (new 2021)
<b>Battery monitor</b>	New in 2022: Victron Precision Battery Monitor with 500A Shunt
<b>Battery charger</b>	New in 2022: Victron Multiplus C12/1600/70-16
<b>Inverter</b>	Victron transformer 3600W, 115/230V
<b>Diode battery combiners</b>	yes
<b>Shorepower</b>	with cable
<b>Extra info</b>	New in 2022: Battery cables
<b>Extra info</b>	Diesel tanks revisited and cleaned
<b>Extra info</b>	New in 2022: Victron Digital Multi Control 200/200A GX

## NAVIGATION

<b>Compass</b>	Cassens & Plath
<b>Electric compass</b>	Autohelm ST30 COMPASS
<b>Depth sounder</b>	Raymarine i70 Tridata System
<b>Log</b>	Raymarine i70 Tridata System
<b>Windset</b>	Raymarine i70 Tridata System
<b>VHF</b>	Garmin VHF 115
<b>Radar</b>	New in 2022: Garmin Radar



Radar/GPS/plotter	New in 2022: Garmin Chartplotter 922SX
Electronic chart(s)	yes
AIS transceiver	New in 2022: Em-Track B921 AIS Class B transceiver
Personal MOB transmitter	yes
Navigation lights	yes
Extra info	VHF masthead antenna Shakespeare heavy duty
Extra info	Garmin GNX Wired Sail Pack 43 w/ 2 displays, transducers

## EQUIPMENT

Fixed windscreen	yes
Bimini	New in 2022
Winter cover	does not cover the whole ship
Cockpit table	one large and one small
Boarding ladder	stainless steel
Anchor	Rocna New Rocna 40kg anchor in 2022
Anchor chain	yes
Anchor 2	Delta
Windlass	manual
Capstan	yes
Sea railing	yes
Grab rail (superstructure)	stainless steel
Pushpit	yes
Pulpit	yes
Life raft	But outdated
Lifebuoy	yes
Danbuoy	yes
Safety lines on deck	yes
Radar reflector	yes
Fenders	yes
Mooring lines	yes
Spare parts	yes



Radio-cd player	JVC
iPod connection	Op radio
Speakers in salon	yes
Clock - barometer	yes
Fire extinguisher	yes

## RIGGING

Rigging	yes
Standing rigging	wire
Brand mast	Sparcraft
Material mast	aluminium
Spreaders	2 pair
Mainsail	De Vries, new in 2018
Mainsail cover	New in 2022
Cutterstay	yes
Jib	27m <sup>2</sup> - 2011
Genoa	46m <sup>2</sup> - 2012
Genoa furler	yes
Cutter furler	yes
Spinnaker	120m <sup>2</sup>
Reefing System	slabreefing
Boomvang	gasspring
Primary sheet winch	1x Lewmar 40
Secondary sheet winch	2x Lewmar 44
Genoa sheetwinches	2x Lewmar 48
Halyard winches	2x Lewmar 40 on mast
Reefing winch	1x Lewmar 16 on mast
Spi-pole	aluminium





# PUFFIN 42



# PUFFIN 42



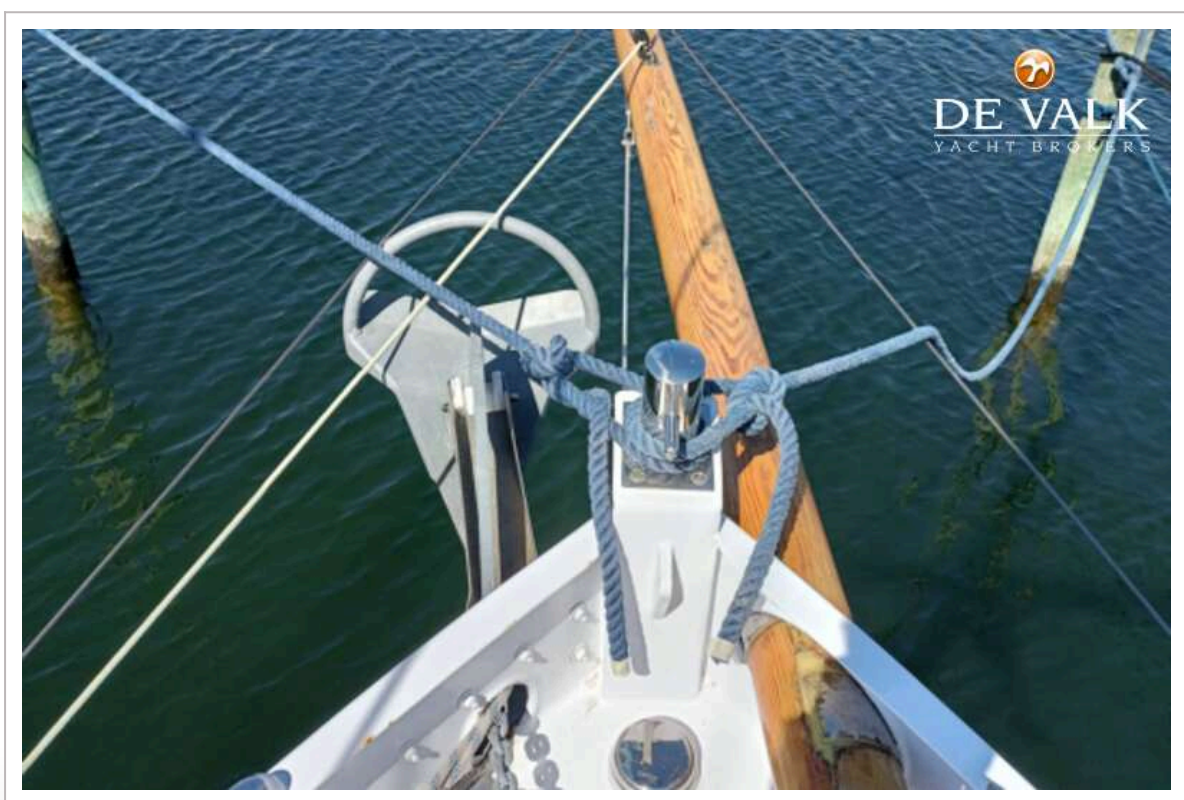
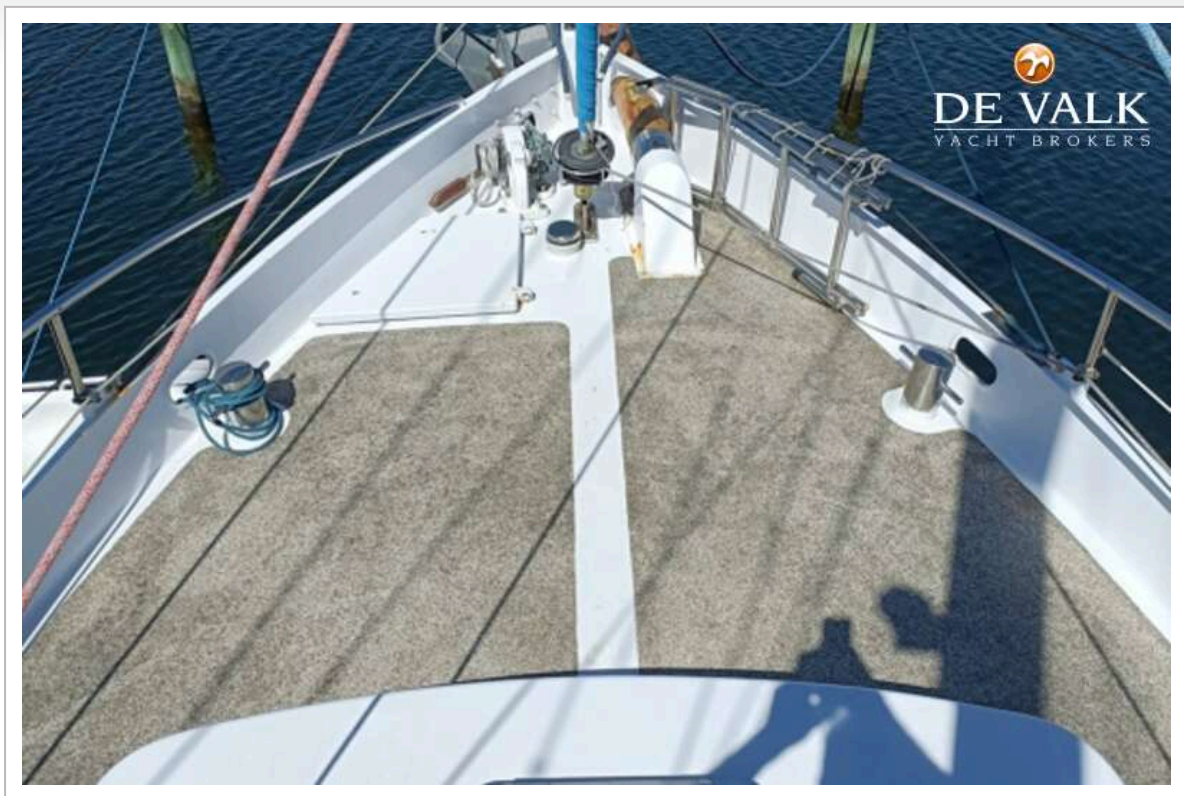


# PUFFIN 42



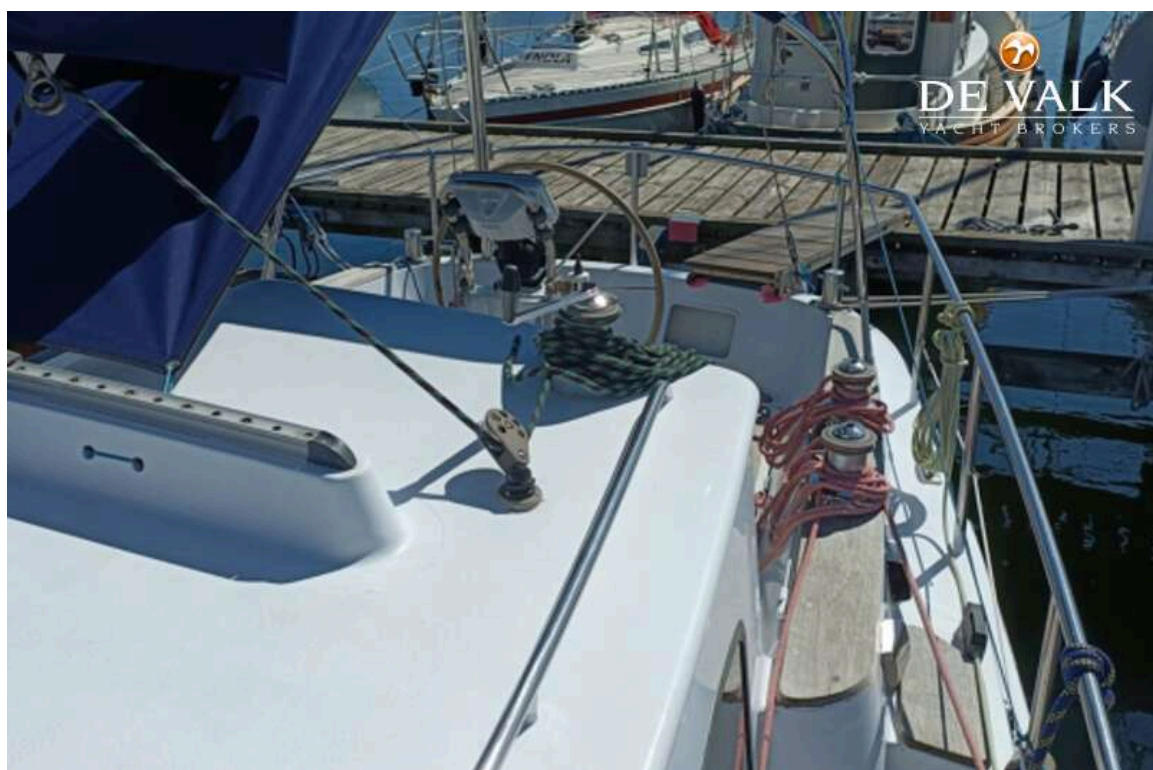


# PUFFIN 42



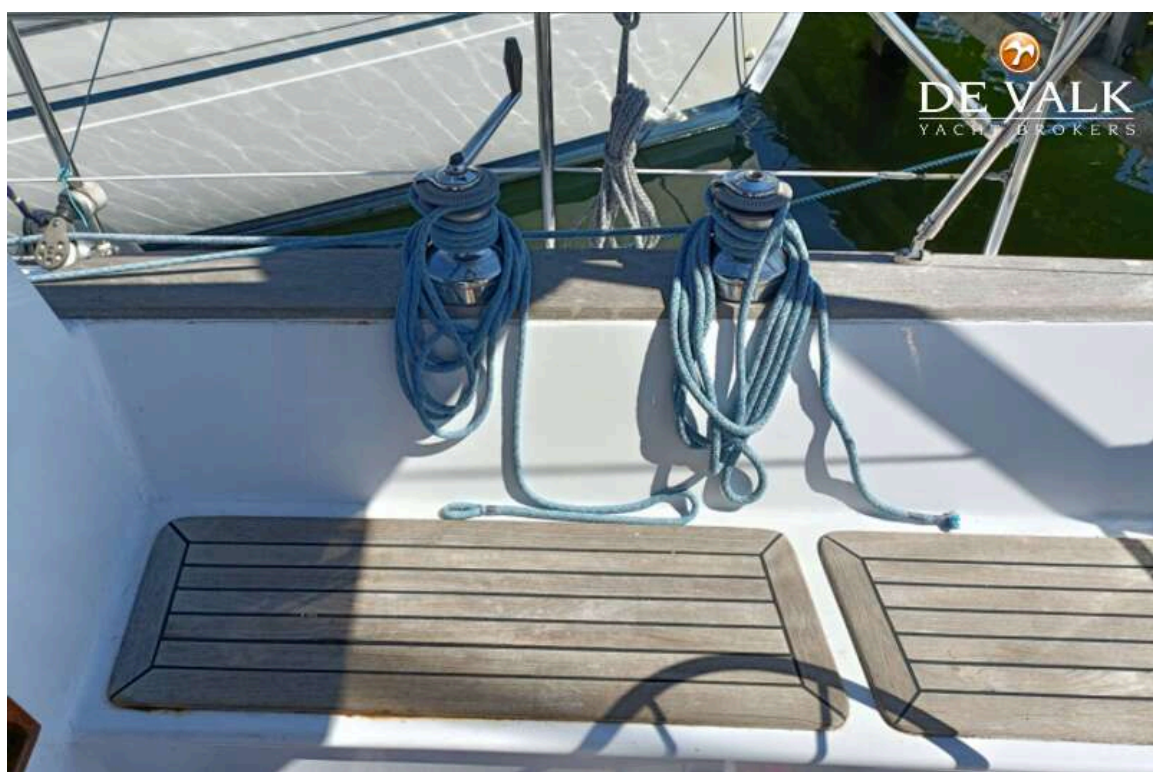


## PUFFIN 42

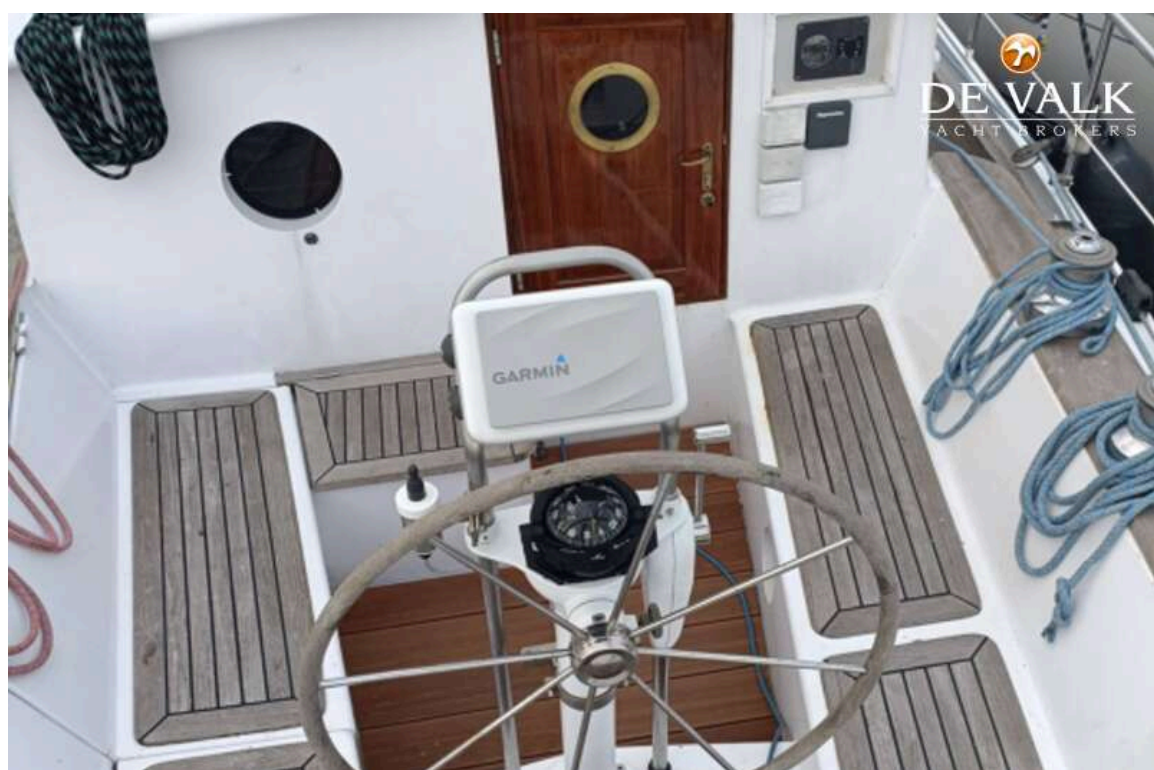
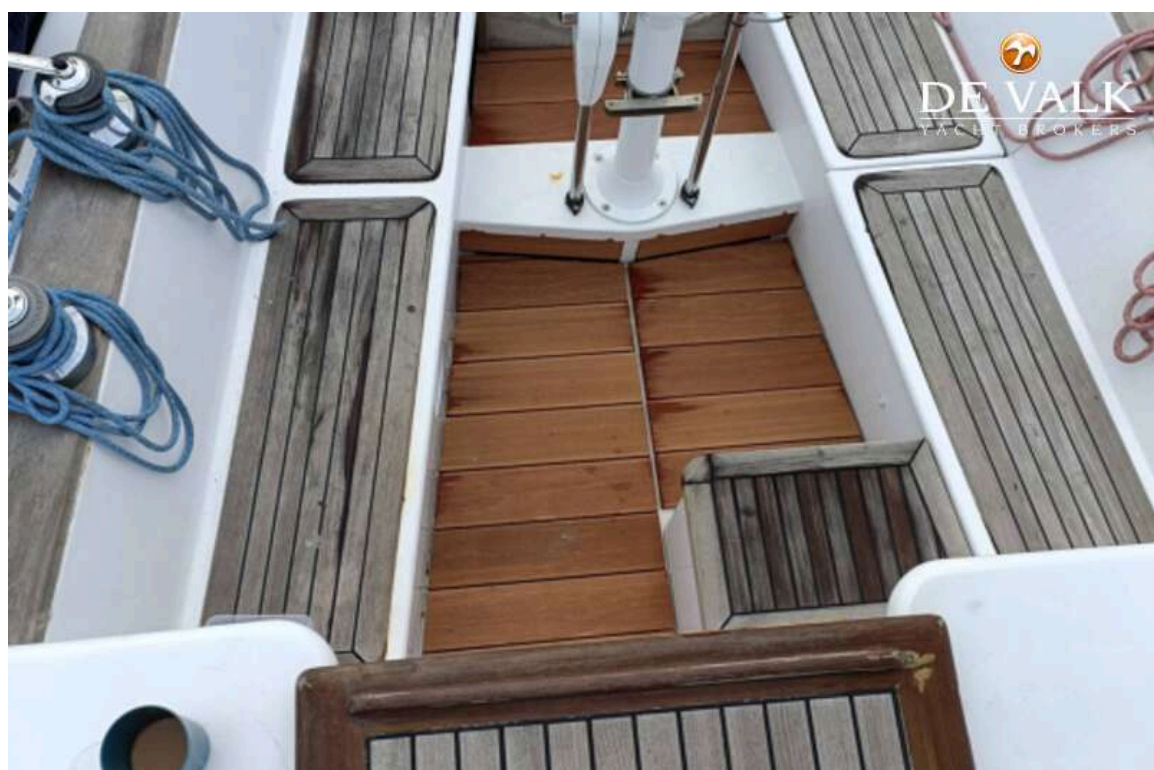




## PUFFIN 42



## PUFFIN 42





## PUFFIN 42





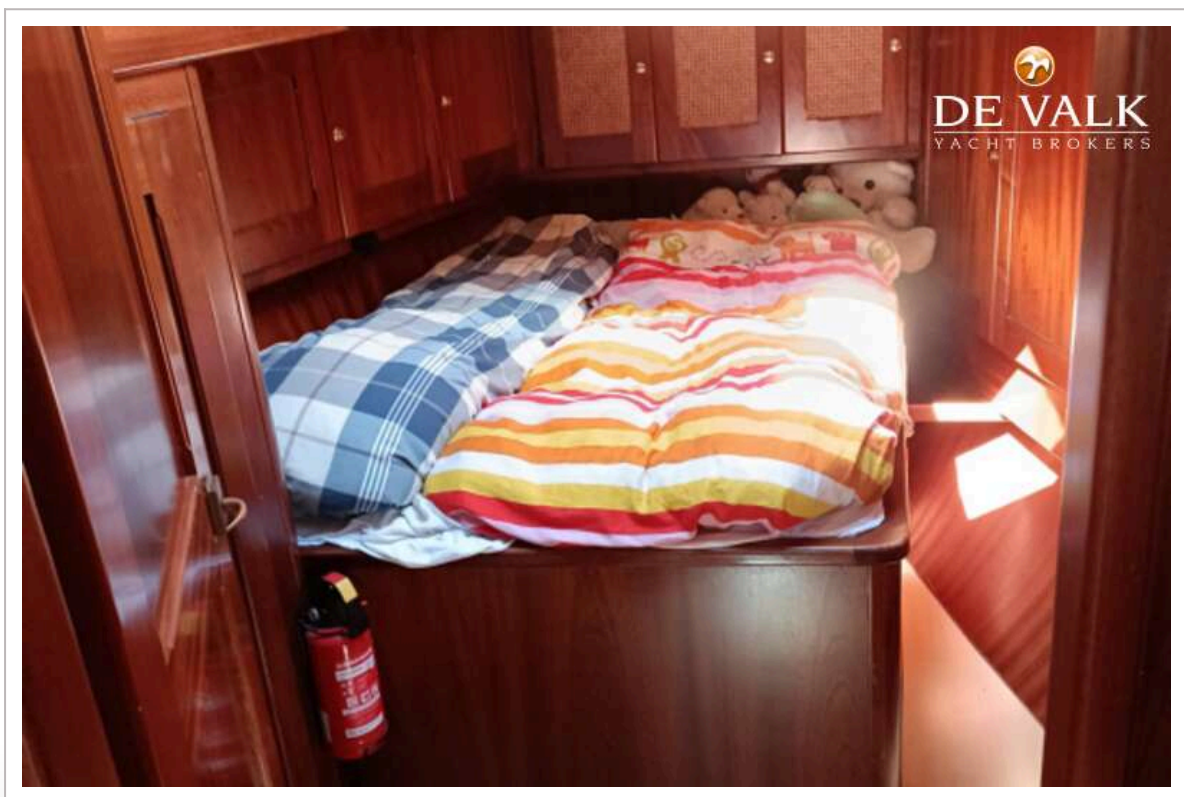
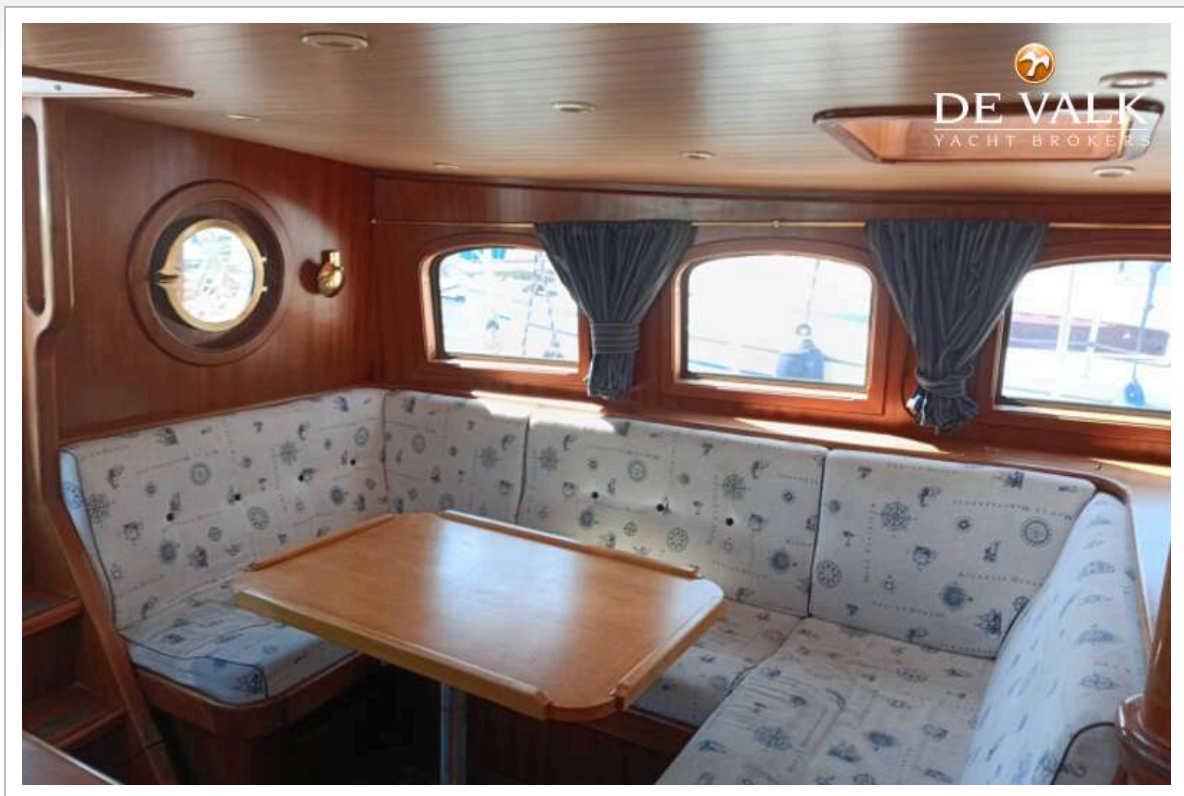


## PUFFIN 42

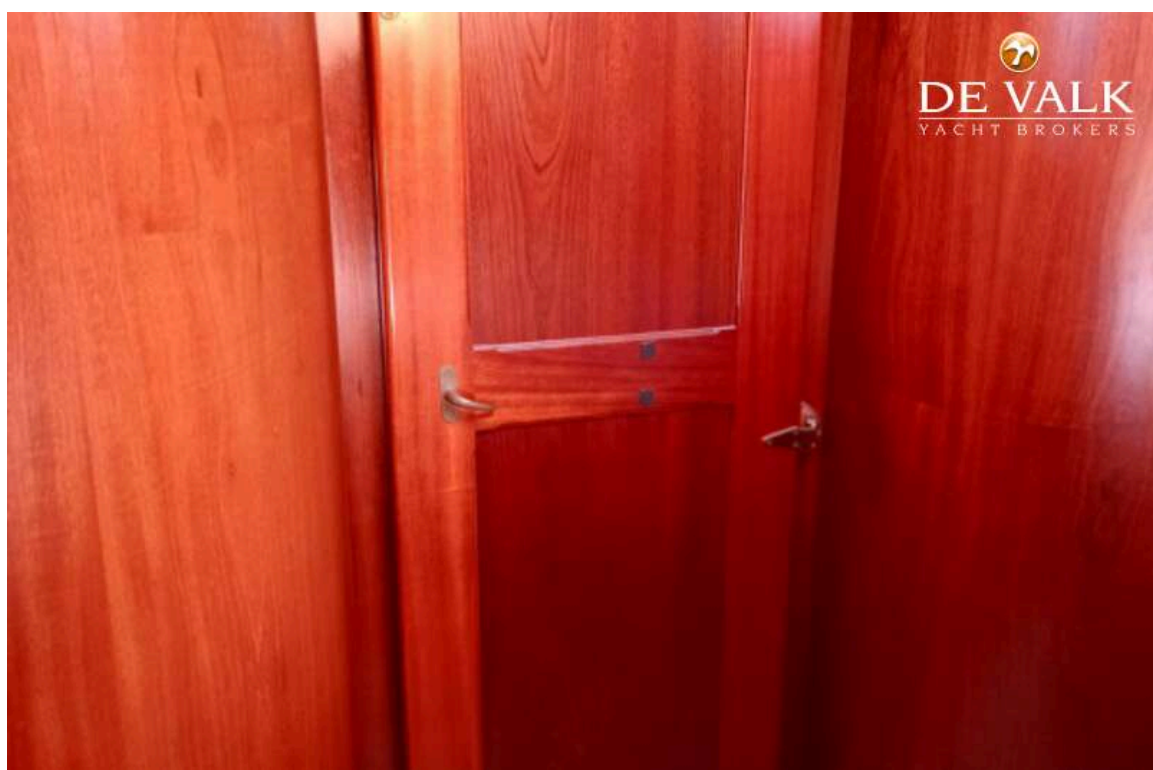




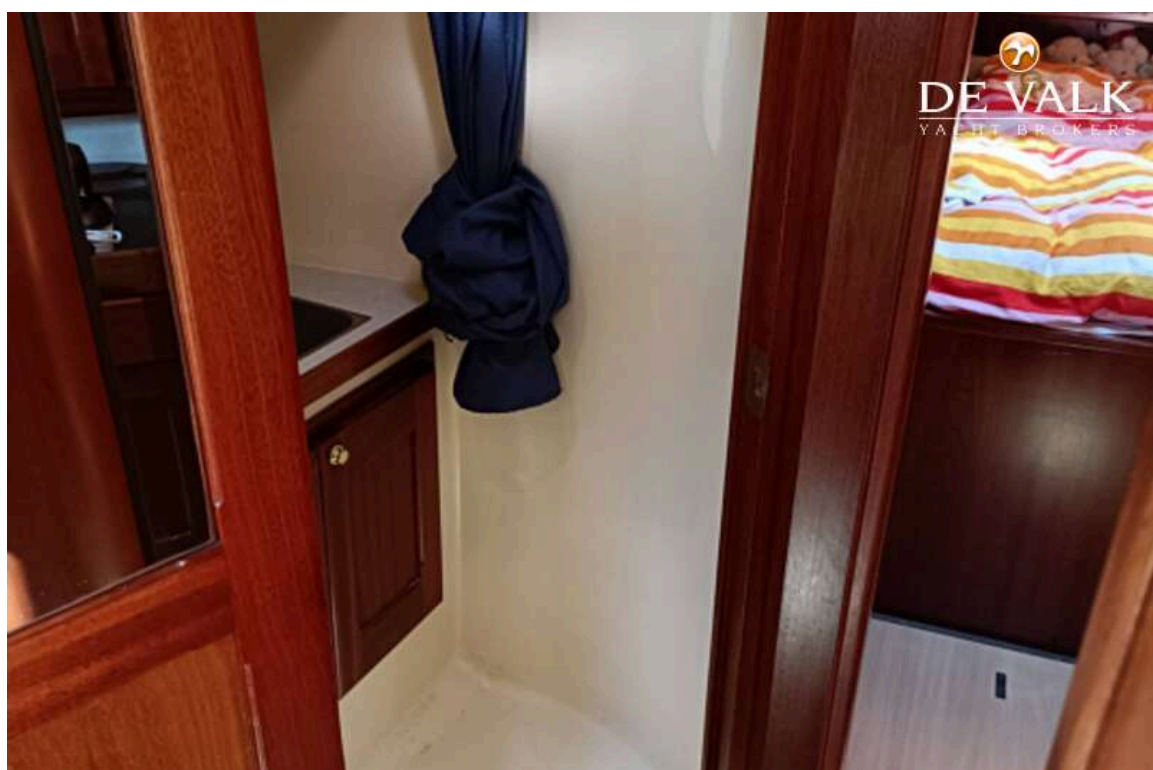
## PUFFIN 42



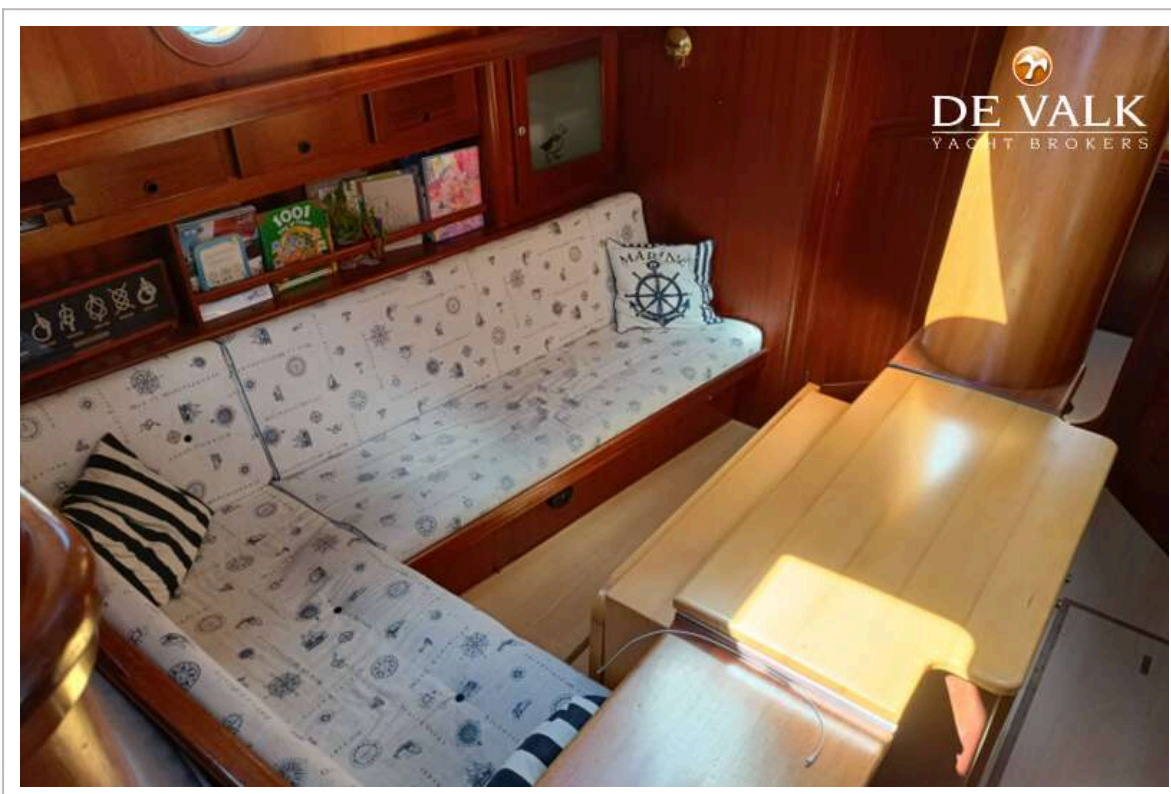
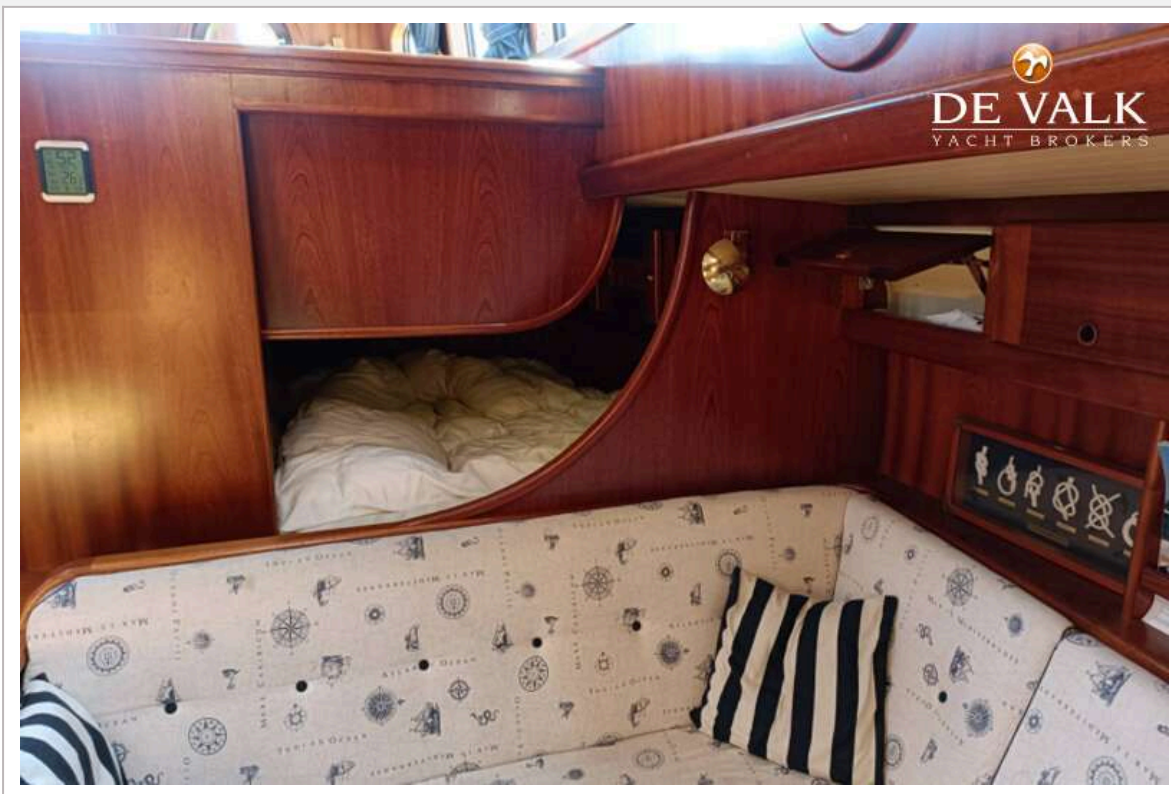
## PUFFIN 42





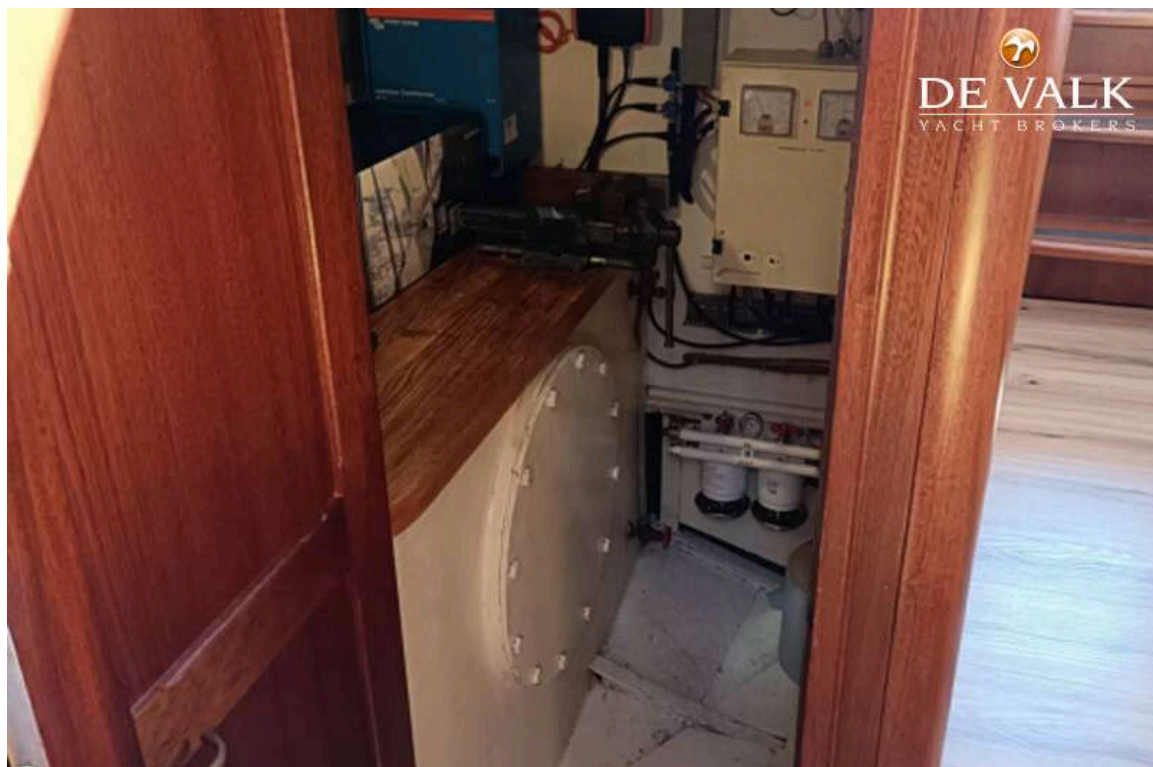


## PUFFIN 42





## PUFFIN 42



## PUFFIN 42

