



DE VALK  
YACHT BROKERS



## NAUTOR SWAN 57 S&S KETCH



DE VALK  
YACHT BROKERS

# NAUTOR SWAN 57 S&S KETCH

## BROKER'S COMMENTS

Classic Swan Sparkman & Stephens Ketch from the legendary Nautor yard in Finland. This Nautor Swan 57 S&S Ketch "TINDORA" was purchased by her current and second owner in 2000. Both owners continually maintained this yacht with a lot of love, care and never cut back on maintenance costs. The teak deck and the engine have been renovated in 2021/2022. The yacht is equipped with newly fitted batteries, a bow truster, a generator, 5 x electric winche, freezer, dingy, outboard engine, life raft, etc. The masts have been refitted and painted in 2011. The hull and topsides have been painted in 2016.

*Jan-Ward van Dantzig*

## SPECIFICATIONS

<b>Dimensions</b>	17.50 x 4.80 x 2.80 (m)	<b>Builder</b>	Nautor Swan
<b>Built</b>	1978	<b>Cabins</b>	4
<b>Material</b>	GRP	<b>Berths</b>	10
<b>Engine(s)</b>	1 x Perkins 4.236 M diesel	<b>Hp/Kw</b>	72.00 (hp), 52.99 (kw)
<b>Asking price</b>	sold (VAT )	<b>Lying</b>	at sales office

## CONTACT

<b>Sales office</b>	De Valk Sint Annaland B.V.	<b>Telephone</b>	+31 (0)166 601 000
<b>Address</b>	Koelhuisweg 4 4697 RM Sint Annaland NL	<b>E-mail</b>	sintannaland@devalk.nl

## DISCLAIMER

These particulars are given in good faith as supplied but cannot be guaranteed.



# NAUTOR SWAN 57 S&S KETCH

## GENERAL

<b>Model</b>	NAUTOR SWAN 57 S&S KETCH
<b>Type</b>	sailing yacht
<b>LOA (m)</b>	17,50
<b>LWL (m)</b>	13,96
<b>Beam (m)</b>	4,80
<b>Draft (m)</b>	2,80
<b>Air draft (m)</b>	22,50
<b>Headroom (m)</b>	2,05
<b>Year built</b>	1978
<b>Builder</b>	Nautor Swan
<b>Country</b>	Finland
<b>Designer</b>	Sparkman & Stephens
<b>Displacement (t)</b>	21,7
<b>Ballast (tonnes)</b>	lead 9,5
<b>Gross tonnage</b>	30
<b>Net tonnage</b>	9
<b>CE norm</b>	NA
<b>Hull material</b>	GRP
<b>Hull colour</b>	white , with baby blue striping (all painted in 2016)
<b>Hull shape</b>	deep-V
<b>Keel type</b>	fin keel Remounted after hull was reinforced (approx.40 mm thick) in 2016
<b>Superstructure material</b>	GRP
<b>Deck material</b>	GRP
<b>Deck finish</b>	teak (1992 - 18 mm) still at least 10 mm thick (recaulked april 2022)
<b>Superstructure deck finish</b>	teak (1992 - 18 mm) still at least 12 mm thick (recaulked april 2022)
<b>Cockpit deck finish</b>	teak (1992 - 18 mm) still at least 10 mm thick (recaulked april 2022)
<b>Antifouling (year)</b>	2022



# NAUTOR SWAN 57 S&S KETCH

<b>Dorades</b>	7 x Stainless steel
<b>Window frame</b>	aluminium
<b>Window material</b>	polycarbonate In superstructure replaced in 2016
<b>Deckhatch</b>	Goiot (with new polycarbonate windows - 2022)
<b>Insulation</b>	Balsa
<b>Fuel tank (litre)</b>	stainless steel 900 litre (3 x 300 litre) - cleaned & remounted in 2016
<b>Level indicator (fuel tank)</b>	Gauge stick
<b>Fuel daytank (litre)</b>	stainless steel 1 x 300 litre - cleaned & remounted in 2016
<b>Freshwater tank (litre)</b>	stainless steel 800 litre (in 4 tanks) - 1 tank cleaned & remounted in 2016
<b>Wheel steering</b>	rack & pinion And chain
<b>Emergency tiller</b>	yes
<b>More info on hull</b>	Osmosis treadment in 2000
<b>Extra info</b>	Rudder sealing and rudder bearing renewed in 2015
<b>Extra info</b>	2 x Prism in front deck (for extra light in bow)
<b>Extra info</b>	Extra double Separ fuel filter on the engine

## ACCOMMODATION

<b>Cabins</b>	4
<b>Berths</b>	10
<b>Interior</b>	teak With white leather upholstery
<b>Floor</b>	teak and holly
<b>Saloon</b>	Port side saloon sofa (1,80 m) equipped with a Lee Cloth
<b>Headroom saloon (m)</b>	2,05 m
<b>Heating</b>	diesel ducted hot air Eberspacher
<b>Chart table</b>	On starboard side (headroom: 1,97 m)
<b>Dinette</b>	yes
<b>Galley</b>	On port side on (headroom: 1,97 m)
<b>Countertop</b>	corian White (renewed in 2002)
<b>Sink</b>	stainless steel 2 x
<b>Cooker</b>	calor gas 4 burner Force 10 (renewed in 2016)



# NAUTOR SWAN 57 S&S KETCH

Oven	Force 10 (renewed in 2016)
Gas alarm	yes
Fridge	220V (2016) watercooled + 24V (2012) compressor (fridge+freezer)
Freezer	220V (2016) watercooled + 24V (2012) compressor (freezer+fridge)
Hot water system	220V + engine Approx. 60 litre
Water pressure system	electrical
Manual and/or foot pump	Salt water pump
Owners cabin	double bed + single bed In aft cabin (headroom: 1,87 m)
Bed length (m)	1 x 2,00 x 1,10 m & 1 x 2,00 x 0,80 m with slatted base
Wardrobe	hanging/drawers/shelves
Bathroom	en suite I (headroom: 1,72 m)
Toilet	en suite
Toilet system	manual Jabsco (new toilet seat 2022)
Wash basin	in the bathroom Stainless steel
Shower	en suite
Guest cabin 1	double bed In the bow (headroom: 1,90 m)
Bed length (m)	2,00 x 1,80 m
Wardrobe	hanging and shelves
Bathroom	shared II (headroom: 1,90 m)
Toilet	shared
Toilet system	manual Jabsco
Wash basin	in the bathroom Stainless steel
Shower	shared
Guest cabin 2	bunk bed On port side in the bow (headroom: 2,03 m)
Bed length (m)	1 x 2,00 x 0,60 m & 1 x 2,00 x 0,70 m (with lee cloths)
Wardrobe	hanging and shelves
Guest cabin 3	bunk bed On starboard side in the bow (headroom: 2,03 m)
Bed length (m)	1 x 2,00 x 0,70 m & 1 x 2,00 x 0,70 m (with lee cloths)
Wardrobe	hanging and shelves
Washing machine	Candy (3,5 KG) Aqua 100F, Class AA Aquamatic (2015)



# NAUTOR SWAN 57 S&S KETCH

Extra info	LED lighting and several 24 Volt ventilators in the interior
Extra info	Neptune mattresses in all cabins. LED interior lights

## MACHINERY

No of engines	1
Make	Perkins
Type	4.236 M
HP	72
kW	52.99
Fuel	diesel
Year installed	1978
Year of overhaul	2022: fuel pump & injectors overhauled. New exhaust pipe
Maximum speed (kn)	8
Cruising speed (kn)	7
Consumption (l/hr)	6,5
Engine hours	5700
Engine cooling system	freshwater heat exchanger Completely renewed in 2016 with new coolant (2022)
Drive	shaft
Engine controls	bowden cable
Gearbox	mechanical Water cooled (complete renewed in 2022) with Dynamic part (2015)
Bowthruster	electric Maxpower 18 Hp (renewed in 2016) with 2 x propeller
Propeller type	folding Maxprop
Propeller blades	3
Propeller shaft material	stainless steel Propeller shaft renewed in 2015 & shaft bearings renewed in 2021
Shaft lubrication	water Propeller shaft seal renewed in 2021
Manual bilge pump	2 x
Electric bilge pump	2 x
Electrical installation	24 Volt & 220 Volt
Generator	wet exhaust Yanmar (complete electric part renewed in 2016)



# NAUTOR SWAN 57 S&S KETCH

Running hours generator	1500
Start battery	2 x (renewed in 2021)
Service battery	6 x 115 Ah AGM (renewed in May 2022)
Generator battery	1 x (renewed in 2021)
Bowthruster battery	2 x Optima Red Top (renewed in 2020)
Battery monitor	Mastervolt Mass Inverter Charger Control (2016)
Battery charger	Mastervolt (2016). Old battery charger as spare available
Inverter	Mastervolt (2016)
Diode battery combiners	yes
Shorepower	with cable
Extra info	Engine mounts, injectors & fuel pump renewed in 2011
Extra info	Water pump on engine (new in 2022), start engine (new in 2016)
Extra info	To be sure of the engine, no expense was spared on maintenance !

## NAVIGATION

Compass	Plastimo Olympic 135 (on the pedestal)
Depth sounder	B & G
Log	B & G
Windset	B & G
Repeater	B & G Hydra 330 (at the chart table)
VHF	Sailor RT144AB
Autopilot	Simrad Robertson AP20 (with second display at chart table)
Rudder angle indicator	Via autopilot
Plotter/GPS	Simrad CP42 (with many not fully up-to-date electronic charts)
Radar/GPS/plotter	Garmin GPS MAP 4010 Radar Transmitter (2022)
Navtex	Furuno Navtex NX-300
PC connection	yes
Electronic chart(s)	There aren't electronic charts present for Garmin GPS MAP 4010
AIS transceiver	(2016) - show on Garmin GPS MAP 4010
Navigation lights	LED lights in mast (2011). Glass stern navigationlight is broken



Extra info

Spreader lights in main mast & mizzen mast.

Extra info

New panel at chart table & all wires renewed (2015/2016)

## EQUIPMENT

Sprayhood with grab rail

Grey (2013)

Cockpit cover

Grey, can be zipped onto the sprayhood (2013)

Sun awning

yes

Winter cover

For over the complete yacht (in 3 parts)

Cockpit cushions

5 x dark blue cushion & 4 x dark blue Comfort Seat

Cockpit table

Must be provided with new teak veneer

Boarding ladder

stainless steel Removable

Deck shower

yes

Anchor

Delta

Anchor chain

50 meter

Anchor 2

yes

Anchor chain

Chain and rope

Windlass

Maxwell Nilsson (up-down foot switches on bow)

Capstan

yes

Dinghy

Joker (with removable floor)

Outboard

1 x 8 HP (serviced in 2022)

Outboard support

1 x on push pit

Sea railing

stainless steel Double wired

Railing side opening gates

On both sides - stainless steel

Pushpit

Stainless steel

Pulpit

Stainless steel

Life raft (pers)

valise (or bag) 6 persons Plastimo Pacific

Last life raft survey

Surveyed until April 2023

Lifejackets

Orange

Safety lines on deck

Stainless steel wire

Radar reflector

yes

Fenders

yes





# NAUTOR SWAN 57 S&S KETCH

Mooring lines	yes
Spare parts	yes
Radio-cd player	Pioneer WMA with MP3 connection
Sub-woofer	yes
Speakers in salon	Boston Caliber
Clock - barometer	Schatz
Fire extinguisher	5 x (need to be surveyed / replaced)
Extra info	2 x folding stainless steel maststep on the mizzen mast
Extra info	Extra winches : 2 x Maxwell 20ST (mainsheet traveler)
Extra info	3x Maxwell 20ST (mizzen sheet, mizzen + mizzen staysail halyard)

## RIGGING

Rigging	ketch
Standing rigging	Dyform And Rod Rigging fore stay (all renewed in 2011)
Brand mast	Nautor
Material mast	aluminium coated White painted by Hall in 2011
Spreaders	Main mast : 2 x 2 & mizzen : 1 x 2
Mainsail	SPARE : Lion Sails : Dacron fully battened (2004 - adequate)
Mainsail cover	Grey (2013)
Fully battened mainsail	Quantum : Kevlar (2013 - moderate to adequate)
Main staysail	North Sails : Dacron
Mizzen	Quantum : Kevlar (2013-good) & Lion Sails : Dacron (2004-good)
Mizzen sailcover	Grey (2013)
Mizzen staysail	North Sails : Dacron (good)
Jib	Quantum : Kevlar with hangs (2013 - adequate)
Jib I	SPARE : Lion Sails : Dacron Jib (2004 - adequate)
Genoa	Quantum Kevlar with a grey UV protection strip (2013 - adequate)
Genoa I	SPARE : Lion Sails : Dacron Genoa (2004 - adequate)
Genoa furler	Reckmann
Spinnaker	Doyle Sails : spinnaker with a snuffer (2013 - good)



# NAUTOR SWAN 57 S&S KETCH

<b>Yankee</b>	North Sails : Dacron (good)
<b>Trysail</b>	Not available, but there is a rail on the mast
<b>Reefing System</b>	slabreefing Mainsail: 3x reef & mizzen: 1 reef (both 2 rope reefing system)
<b>Backstay adjuster</b>	hydraulic 2 x
<b>Boomvang</b>	hydraulic Navtec
<b>Primary sheet winch</b>	1 x Lewmar 48 ST (electric - main sheet)
<b>Secondary sheet winch</b>	2 x Lewmar 44 ST (manual - Jib sheet / back stays)
<b>Genoa sheetwinches</b>	2 x Barient 36 ST (electric)
<b>Halyard winches</b>	1 x Lewmar 48 ST (electric) and 2 x Lewmar 44 ST (manual)
<b>Reefing winch</b>	1x Lewmar 48 ST (electric genoa) and 1 x Lewmar 48 ST (manual)
<b>Multifunctional winches</b>	1 x Lewmar 43 ST and 1 x Lewmar 48 ST (both manual)
<b>Spi-pole</b>	carbon Hall (white painted) renewed in 2011
<b>Isolated backstay</b>	(renewed in 2011)
<b>Extra info</b>	Rigging refit by Hall in 2011 (painted, electric wires, discs)
<b>Extra info</b>	Aluminium Selden stay tentioner protection tubes (2011)



# NAUTOR SWAN 57 S&S KETCH





# NAUTOR SWAN 57 S&S KETCH



# NAUTOR SWAN 57 S&S KETCH





# NAUTOR SWAN 57 S&S KETCH





# NAUTOR SWAN 57 S&S KETCH





# NAUTOR SWAN 57 S&S KETCH





# NAUTOR SWAN 57 S&S KETCH





# NAUTOR SWAN 57 S&S KETCH





# NAUTOR SWAN 57 S&S KETCH



# NAUTOR SWAN 57 S&S KETCH





# NAUTOR SWAN 57 S&S KETCH

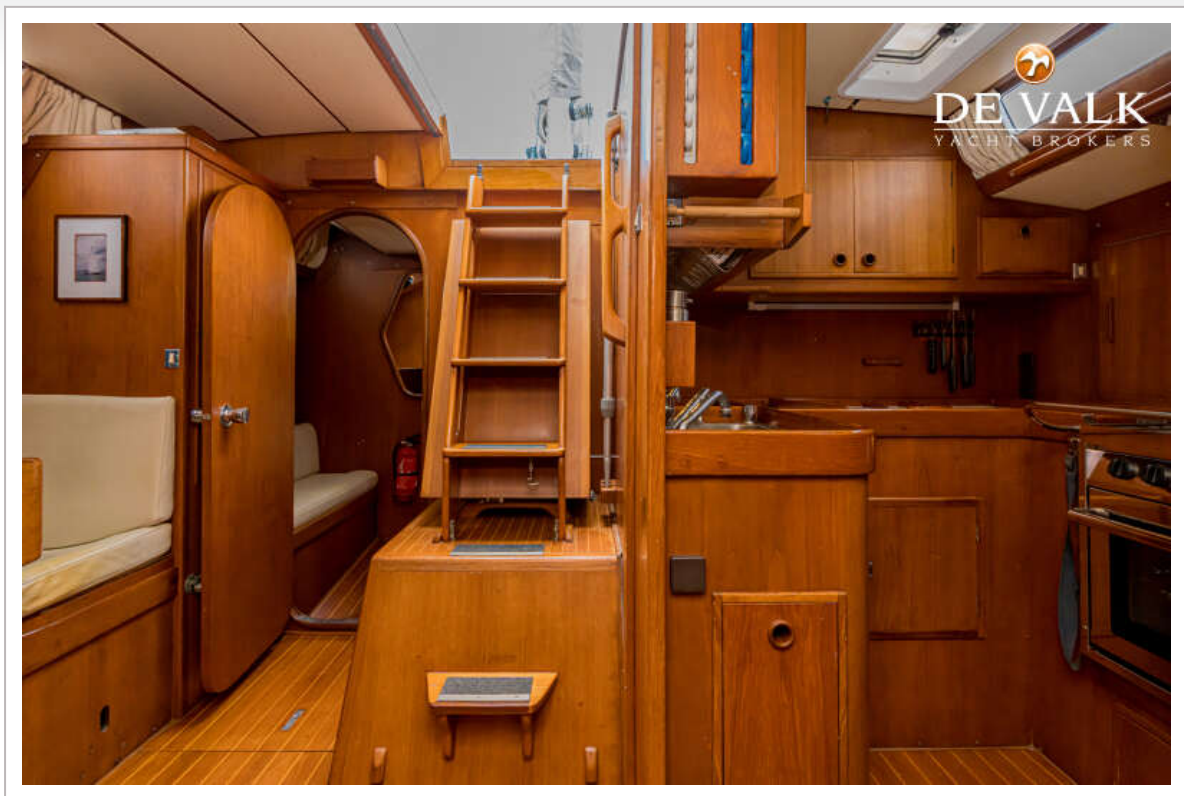


# NAUTOR SWAN 57 S&S KETCH

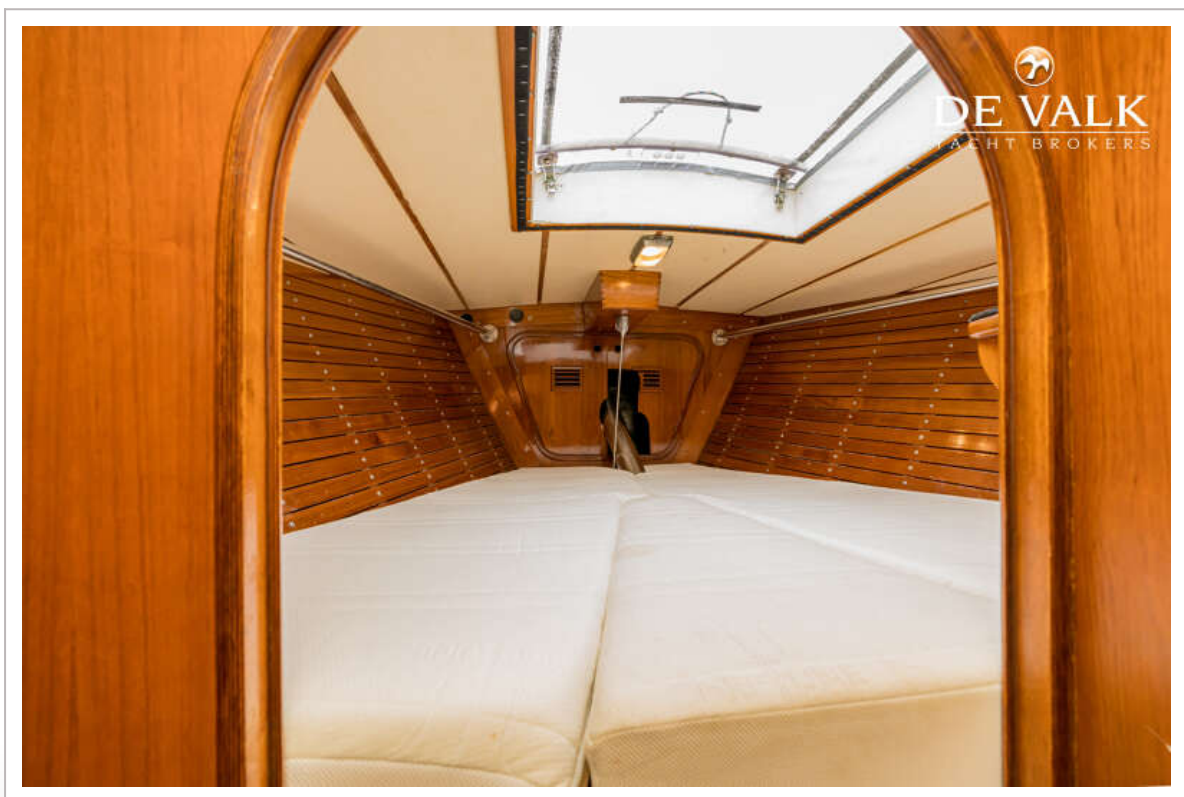




# NAUTOR SWAN 57 S&S KETCH

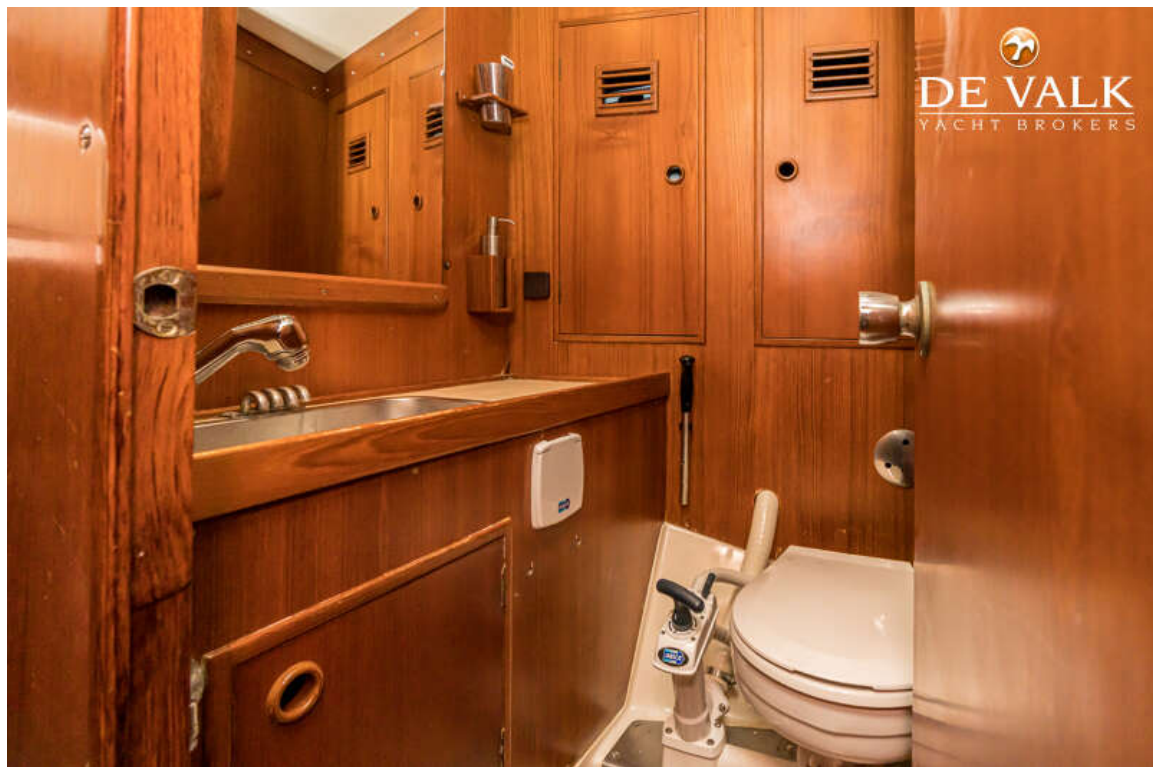


# NAUTOR SWAN 57 S&S KETCH





# NAUTOR SWAN 57 S&S KETCH

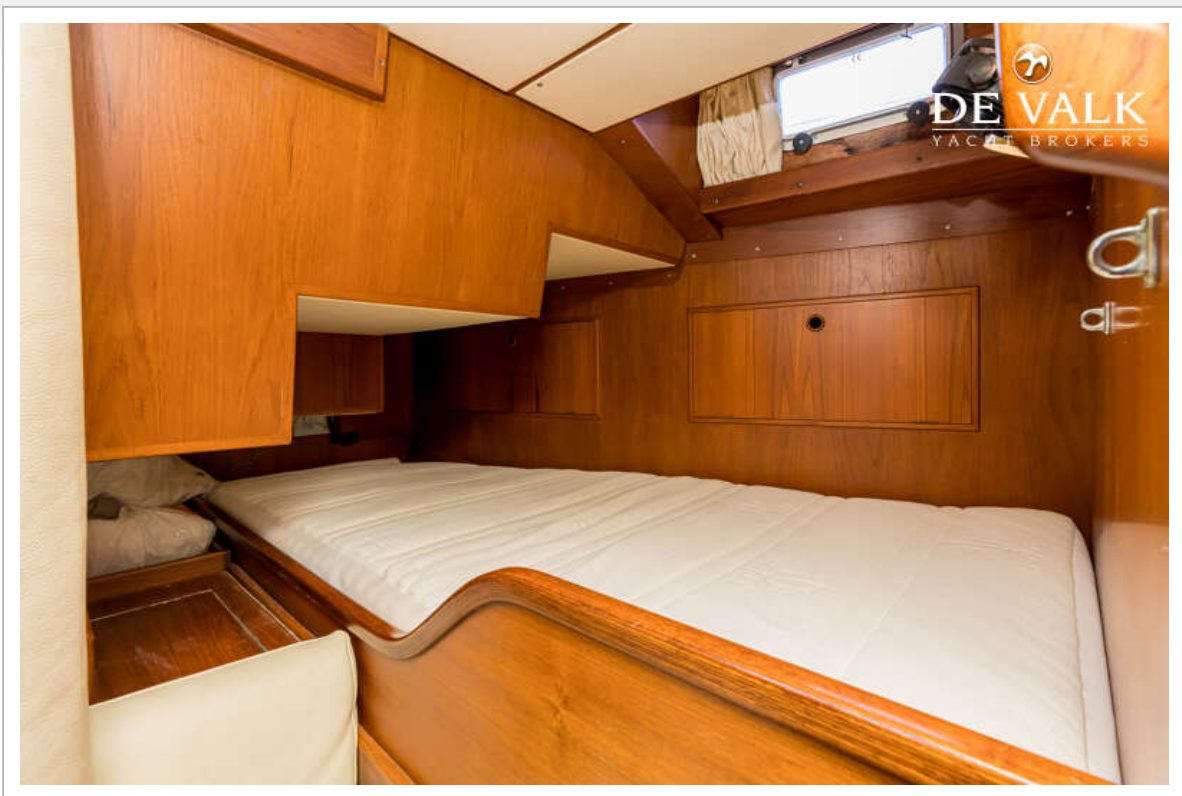


# NAUTOR SWAN 57 S&S KETCH

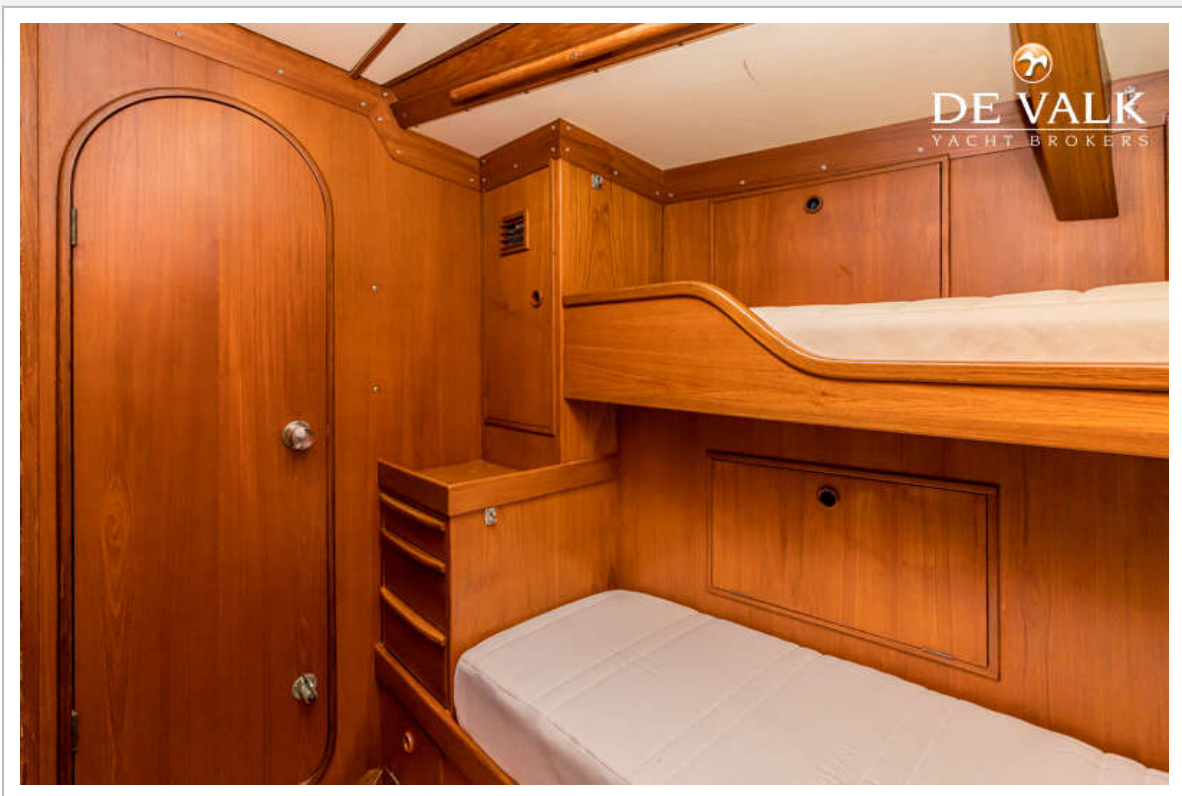




# NAUTOR SWAN 57 S&S KETCH



# NAUTOR SWAN 57 S&S KETCH





# NAUTOR SWAN 57 S&S KETCH



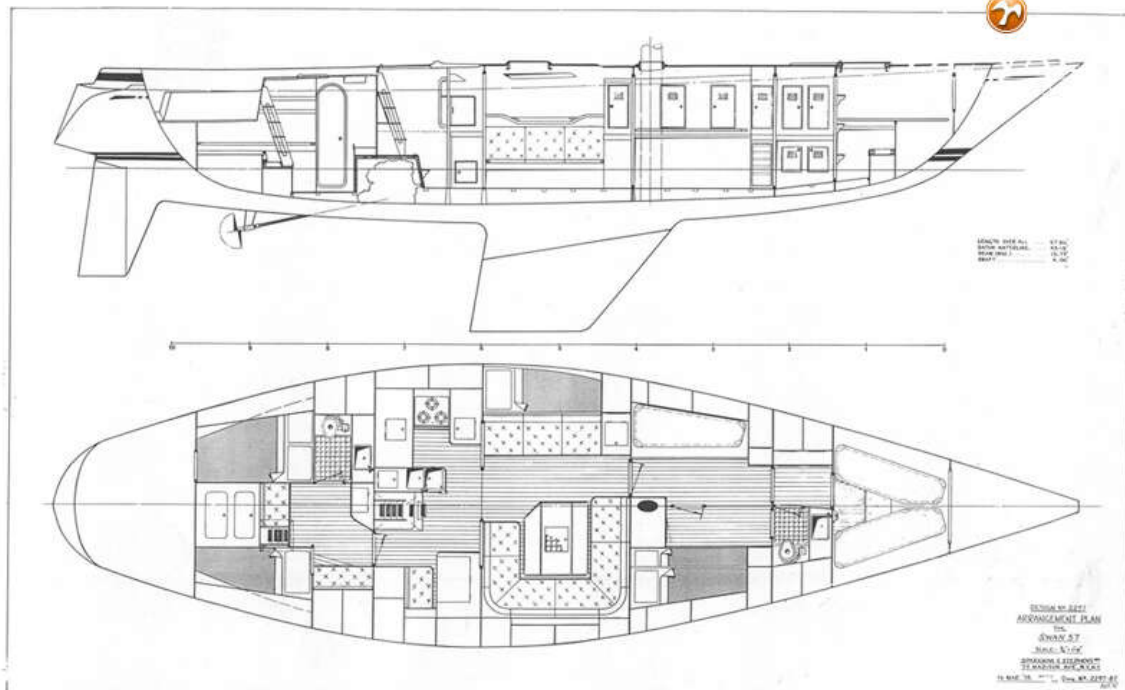
TINDORA : UPGRADES ALGEMEEN	TINDORA : GENERAL UPGRADES	TINDORA : ALLGEMEINE UPGRADES
<b>2000</b> Osmosebehandeling, gelcoat en 4 mm polyester weggeslepen. 12 maanden uitgedroogd op de wal. Polyester opnieuw opgebouwd met	Osmosis treatment, gelcoat and 4 mm polyester removed. Dehydrated on shore for 12 months. Polyester rebuilt with epoxy	Osmosebehandeling, Gelcoat en 4 mm Polyester verwijderd. 12 maanden an Land dehydrat. Epoxy met Epoxy id om aan te bouwen
<b>2001</b> Boegschroef (MaxPower) geïnstalleerd	Bow thruster (MaxPower) installed	Bugstrahler (MaxPower) geïnstalleerd
Teak dek gerubbed	Teak deck recaulked	Teakdeck neu gummiert
Persplex luiken vervangen	Persplex in deck hatches replaced	Persplex der Decksluken erneuert
<b>2002</b> Kiel eraf voor controle van de kielbouten	Keel disassembled for checking the keel bolts	Kiel demontiert zur Überprüfung der Kielbolzen
Romp en opbouw schilderwerk (blauw - De IJssel)	Hull and superstructure painted (blue - De IJssel)	Rumpf- und Aufbauackierung (Blau - De IJssel)
Verstaging vernieuwd (rod rigging)	Standing rigging renewed (rod rigging)	Stehendes Gut erneuert (Rod-Rigging)
<b>2004</b> Nieuwe set zeilen van Lion Sails	New sails from Lion Sails	Segelset Lion Sails
Simrad Kaartplotter geïnstalleerd	Simrad Chartplotter installed	Simrad Kartplotter installiert
<b>2011</b> Mast refit door Hall Spars. Rod verstaging vervangen voor draad (voorstag wel Rod). Vernieuwd: elektrische bedrading, verlichtingarmaturen LED, schijven, verstaging en spanners, lopend want en radarreflector. Masten gestraald, gegrond en gespoten met	Mast refit by Hall Spars. Rod Rigging replaced by wire (only forestay in Rod). Renewed: electrical wiring, LED lighting fixtures, discs, stays and tensioners, running rigging and radar reflector. Masts blasted, primed and sprayed with Awlgrip	Mastüberholung durch Hall Spars. Gestängestreben gegen Draht (Vorstag oder Gestänge) austauschen. Erneuert: elektrische Verkabelung, LED-Beleuchtungskörper, Scheiben, Stagen und Spanner, laufendes Gut und Radarreflektor. Masten gestrahlt,
Garmin Radar vernieuwd	Garmin Radar renewed	Garmin Radar erneuert
<b>2013</b> Nieuwe set zeilen van Quantum Sails	New sails from Quantum Sails	Segelset Quantum Sails
Spinnaker Doyle	Spinnaker Doyle	Spinnaker Doyle
Sprayhood en huilen vernieuwd	Sprayhood and covers renewed	Neue Sprayhood und Penseningen
<b>2014</b> Neptune matrassen (achterkajuit met lattenbodem) en lederen kussens in de salon	Neptune mattresses (aft cabin with slatted base) and leather cushions in salon	Neptune Matratzen (Achterkabine mit Lattenrost) und Lederkissen im Salon
Dubbel bed in de voorpunt gemaakt	Double bed in the front cabin made	Doppelbett im vorderen Kabine gemacht
Looskooi (bakboord in de salon) vervangen door kasten	Seabirth (portside in saloon) replaced by cabinets	Schlafplatz im Salon am Bakbord Seite ersetzt worden mit Schrank
Candy wasmachine	Candy washing machine	Candy Waschmaschine
<b>2015</b> Roerlagers en roerwielafdichting vernieuwd	Rudder bearings and rudder shaft sealing renewed	Ruderlagerung und Abdichtung des Ruderwelles erneuert
<b>2016</b> Elektrisch systeem refit. Vernieuwd: schakelpaneel, bedrading, inverter, acculader en elektrisch systeem van Yanmar generator, dekkschakelaars ankerlier	Refit electrical system. Renewed: switch panel, wiring, inverter, battery charger and electrical system of Yanmar generator, deck switches anchor winch	Überholung der elektrischen Anlage. Erneuert: Schalttafel, Verkabelung, Wechselrichter, Batterieladegerät und elektrisches System des Yanmar-Generators, Deckschalter Ankerwinde
Kielsectie romp vernieuwd, dikte 40 mm (Van der Rest Nautic, Kats)	Keel section hull renewed, thickness 40 mm (VD Rest Nautic, Kats)	Kielabschnitt Rumpf erneuert, Dicke 40 mm (VD Rest Nautic, Kats)
Hull en opbouw schilderwerk (De IJssel, wit en baby blue)	Hull and superstructure painted (white and baby blue - De IJssel)	Rumpf- und Aufbauackierung (weiss und Baby Blau - De IJssel)
Tanks gereinigd	Tanks cleaned	Tanks gereinigt
Boegschroef (Maxpower) vernieuwd	Bow thruster (Maxpower) renewed	Bugstrahler (Maxpower) erneuert
AIS geïnstalleerd	AIS installed	AIS installiert
Force 10 kooktoestel met oven vernieuwd	Force 10 stove with oven renewed	Force 10 Herd mit Backofen erneuert
Boiler vernieuwd	Hot water boiler renewed	Kessel erneuert
Bliegepompen en waterpomp vernieuwd	Bliegepompen en waterpomp vernieuwd	Bliegepompen und Wasserpumpe erneuert
Pastime kompas	Pastime compass	Pastime Kompass
<b>2020</b> Accu's boegschroef (2 x Optima Red Top)	Bow thruster batteries (2 x Optima Red Top)	Batterien für Bugstrahler (2 x Optima Red Top)
<b>2021</b> Accu's Perkins en Yanmar (3 x)	Batteries Perkins and Yanmar (3 x)	Batterien Perkins und Yanmar (3 x)
LED in originele armaturen	LED-lights in original fixtures	LED-Lampen in Originalfassungen
<b>2022</b> Teakdek gerubbed, schroeven eruit, afgevuuld met epoxy en pluggen. Het originele teakdek is vernieuwd in 1992 (dikte 18 mm) en heeft nu aan de voorzijde van het schip een dikte van 10 mm en op andere plaatsen 12 mm	Teak deck recaulked, screws removed, filled with epoxy and plugs. The original teak deck was renewed in 1992 (thickness 18 mm) and now has a thickness of 10 mm at the front of the ship and 12 mm on other places	Teakdeck neu gummiert, Schrauben entfernt, mit Epoxy und Stopfen gefüllt. Das ursprüngliche Teakdeck wurde im Jahr 1992 erneuert (Dicke 18 mm) und hat jetzt eine Dicke von 10 mm am Vordersende des Schiffes und 12 mm an anderen Stellen
AGM Accu's service (6 x 115 Ah)	AGM Batteries Domestic (6 x 115 Ah)	AGM Batterien Service (6 x 115 Ah)
Radar-zender (Garmin) vernieuwd	Radar transmitter (Garmin) renewed	Radar sender (Garmin) erneuert
Persplex luiken vervangen	Persplex in deck hatches replaced	Persplex der Decksluken erneuert



# NAUTOR SWAN 57 S&S KETCH



TINDORA : PERKINS 4236M		TINDORA : PERKINS 4236M		TINDORA : PERKINS 4236M	
2011	Vernieuwd: fuelpomp, motorsteunen	Renewed: fuel pump, engine support	Erneuert: Kraftstoffpumpe, Motorsstütze		
2016	Vernieuwd: startmotor, warmtewisselaar, dynamische koppeling, schroefas, extra fuelfilter	Renewed: starter motor, heat exchanger, dynamic gearbox, propeller shaft, extra fuel filter	Erneuert: Anlasser, Wärmetauscher, dynamische Kupplung, Propellorwelle, zusätzlicher Kraftstofffilter		
2021	Vernieuwd: lagers schroefas	Renewed: propeller shaft bearings	Erneuert: Propellorwellenlager		
2022	Vernieuwd: schakelbak, waterpomp, uitlaatstuk, filters, impellor, V-snaren, koelvloeistof	Renewed: gearbox, water pump, exhaust pipe, filters, impellor, V-belts, coolant	Erneuert: Getriebe, Wasserpumpe, Auspuffrohr, Filter, Impeller, Keilriemen, Kühlmittel		
	Service: injectors, kleppen stellen (gedaan), fuelpomp (wordt nog door werf uitgevoerd)	Service: injectors, adjusting valves (done), fuel pump (will be done by shipyard)	Service: Einspritzdüsen, Ventile einstellen (erledigt), Kraftstoffpumpe (wird durch Werft durchgeführt)		
TINDORA : ONDERHOUD TE VOORZIEN		TINDORA : MAINTENANCE TO BE PROVIDED		TINDORA : WARTUNG MUSS VORGESEHEN WERDEN	
2023	Antifouling, winterbeurt Perkins en Yanmar, vernieuwe keerkoppeling olie	Antifouling, winter service Perkins and Yanmar and renewing oil gearbox	Antifouling, Winterwartung Perkins + Yanmar und erneuern vom Getriebe Öl		
	Repareren of vernieuwen snelheidsmeter (werkt niet)	Repair or renew speedometer (not working)	Log reparieren oder erneuern (funktioniert nicht)		
2024	Verstaging check, preventief vervangen Rod voorstag	Standing Rig check, preventively replace Rod forestay	Stehendes Gut prüfen, Rod-Vorstag vorsorglich ersetzen		
	Vervangen kit dekdoorvoeren bij verstaging en schilderen mastvoet als masten eraf	Replacing deck transit kit at rigging and painting mast foot (when masts are off)	Ersetzen des Deck-Transit-Kits am Rigging und Lackieren des Mastfußes (wenn die Masten abgenommen sind)		
	Service motoren van lieren (koolbortstels en koperdraad)	Service winch engines (carbon brushes and copper wire)	Wartung am Windenmotoren (Kohlebürsten und Kupferdraht)		
	Reinigen en smeren lieren en ankerlier	Cleaning and lubricating winches and anchor winch	Winden und Ankerwinde reinigen und schmieren		
2024/26	Vernieuwen zeilen (niet bezaan). Met Quantum en Lions set kan nog een aantal seizoenen gevaren worden	Renew sails (not mizzen). With the Quantum and Lions set can be sailed a few more seasons	Segel erneuern (nicht Besan). Mit Quantum und Lions Set kann noch ein paar Saisons gesegelt werden		



# NAUTOR SWAN 57 S&S KETCH

